



Pioneer Energy Services

Dual Compensated Porosity Log

15-195-22,883-00-00

API No.	Company Cholla Production, LLC		
	Well Schamberger # 1-3		
	Field Diebolt East		
	County Trego	State Kansas	
	Location 1,470' FNL & 1,380' FWL		
	Sec: 3	Twp: 11S	Rge: 23W
	Permanent Datum Ground Level	Elevation 2292	Other Services
	Log Measured From Kelly Bushing	8 Ft. Above Perm. Datum	DIL
	Drilling Measured From Kelly Bushing		MEL
Date	9/4/2013	Elevation	2300
Run Number	One	D.F.	2292
Type Log	CNL / CDL	G.L.	
Depth Driller	3960		
Depth Logger	3958		
Bottom Logged Interval	3937		
Top Logged Interval	3000		
Type Fluid In Hole	Chemical		
Salinity, PPM CL	3200		
Density	9.3		
Level	Full		
Max. Rec. Temp. F	116		
Operating Rig Time	4 Hours		
Equipment -- Location	108 Hays		
Recorded By	J. Long		
Witnessed By	Bill Goff		

Borehole Record				Casing Record			
Run No.	Bit	From	To	Size	Wgt.	From	To
1	12.25	00	265	8.625	24#	00	265
2	7.875	265	3960				

<<< Fold Here >>>

All interpretations are opinions based on inferences from electrical or other measurements and we cannot and do not guarantee the accuracy or correctness of any interpretation, and we shall not, except in the case of gross or willful negligence on our part, be liable or responsible for any loss, costs, damages, or expenses incurred or sustained by anyone resulting from any interpretation made by any of our officers, agents or employees. These interpretations are also subject to our general terms and conditions set out in our current Price Schedule.

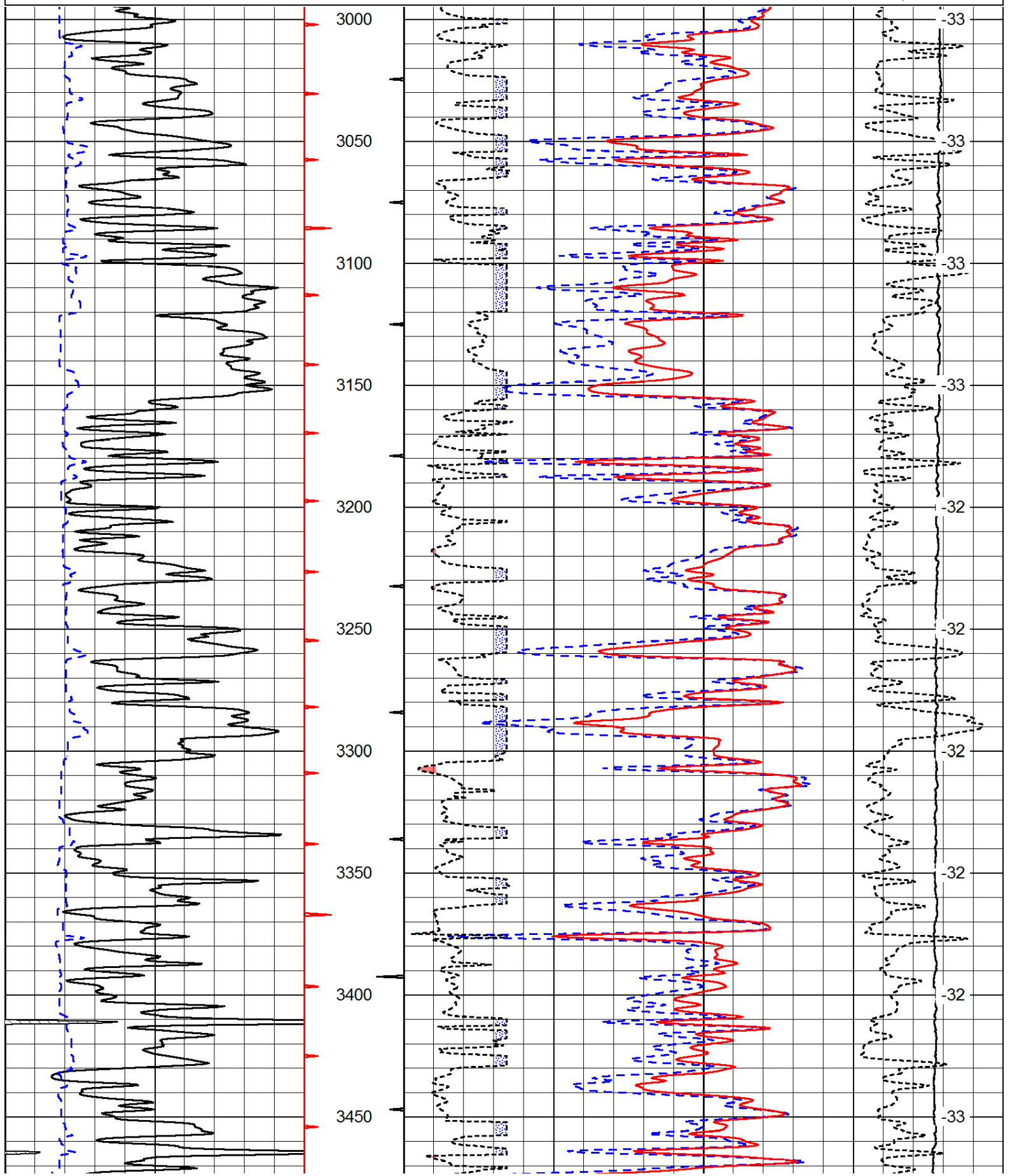
Comments

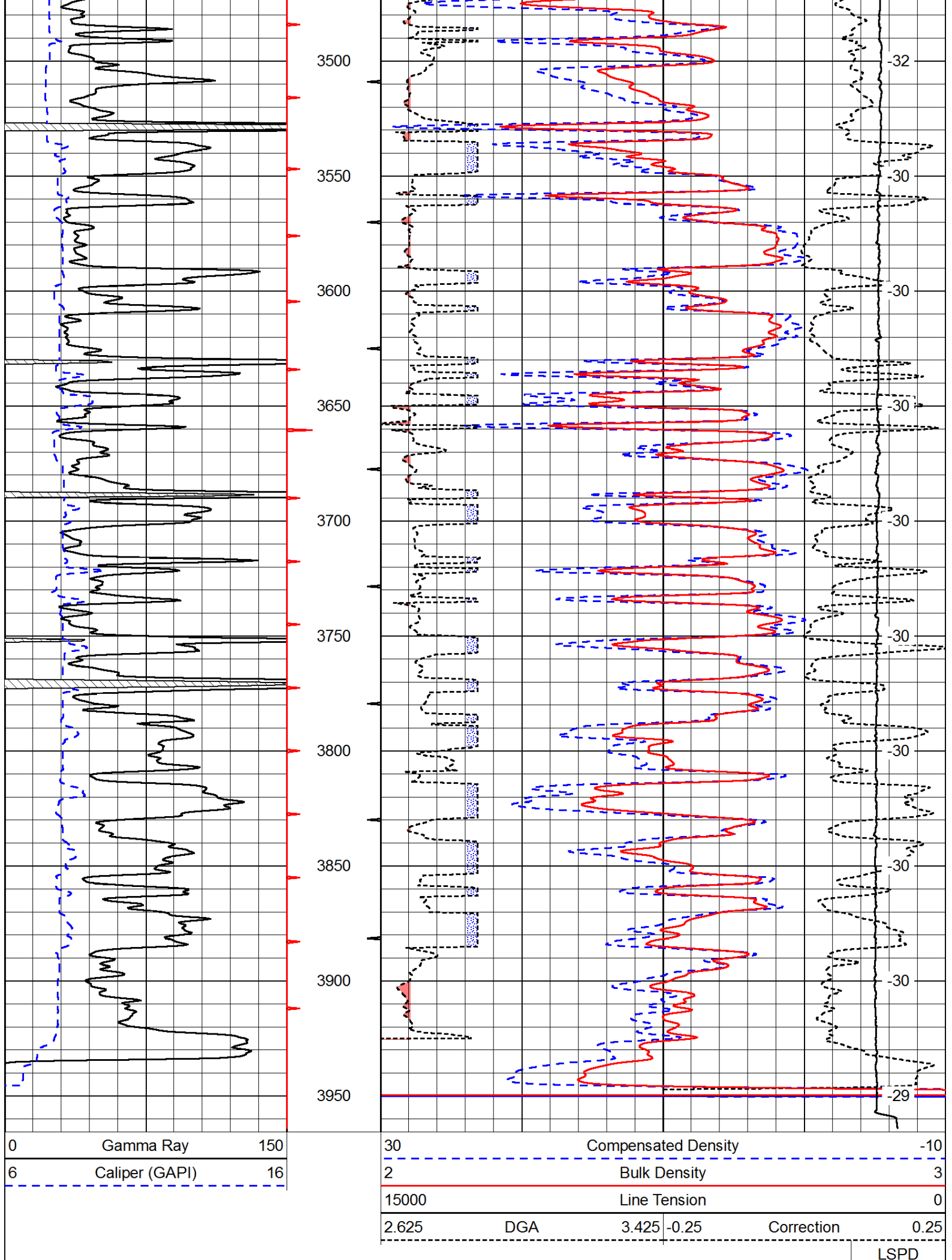
Thank you for using Pioneer Energy Services
www.pioneerenergy.com
 785 625 3858

Wakeeney, 7 3/4 North, 1/4 East, North Into

0	Gamma Ray	150
6	Caliper (GAPI)	16

30	Compensated Density		-10
2	Bulk Density		3
15000	Line Tension		0
2.625	DGA	3.425	-0.25
Correction			0.25
LSPD			





Database File: c:\warrior\data\cholla_schamberger # 1-3\cholla_schamberger_1-3hd.db
 Dataset Pathname: dil/chostck
 Presentation Format: cndlspec
 Dataset Creation: Wed Sep 04 09:52:38 2013
 Charted by: Depth in Feet scaled 1:240

0	Gamma Ray	150
6	Caliper (GAPI)	16

30	Compensated Neutron (Limestone)			-10	
30	Compensated Density (Limestone)			-10	
2.625	DGA	3.425	-0.25	Correction	0.25
15000	Line Tension			0	

LSPD

