



Pioneer Energy Services

Dual Induction Log

15-195-22,883-00-00

API No.

Company **Cholla Production, LLC**

Well **Schamberger # 1-3**

Field **Diebolt East**

County **Trego** State

Kansas

Location

1,470' FNL & 1,380' FWL

Other Services
CNL/CDL
MEL

Sec: 3 Twp: 11S Rge: 23W

Permanent Datum Ground Level Elevation 2292
Log Measured From Kelly Bushing 8 Ft. Above Perm. Datum
Drilling Measured From Kelly Bushing

Elevation

K.B. 2300
D.F. 2292
G.L. 2292

Date 9/4/2013

Run Number One

Depth Driller 3960

Depth Logger 3958

Bottom Logged Interval 3957

Top Log Interval 250

Casing Driller 8.625 @ 265

Casing Logger 262

Bit Size 7.875

Type Fluid in Hole Chemical

Salinity, ppm CL 3200

Density / Viscosity 9.3 53

pH / Fluid Loss 10.5 7.8

Source of Sample Flowline

Rm @ Meas. Temp .48 @ 82

Rmf @ Meas. Temp .36 @ 82

Rmc @ Meas. Temp .65 @ 82

Source of Rmf / Rmc Charts

Rm @ BHT .34 @ 116

Operating Rig Time 4 Hours

Max Rec. Temp. F 116

Equipment Number 108

Location Hays

Recorded By J. Long

Witnessed By Bill Goff

<<< Fold Here >>>

All interpretations are opinions based on inferences from electrical or other measurements and we cannot and do not guarantee the accuracy or correctness of any interpretation, and we shall not, except in the case of gross or willful negligence on our part, be liable or responsible for any loss, costs, damages, or expenses incurred or sustained by anyone resulting from any interpretation made by any of our officers, agents or employees. These interpretations are also subject to our general terms and conditions set out in our current Price Schedule.

Comments

Thank you for using Pioneer Energy Services
www.pioneerenergy.com
785 625 3858

Wakeeney, 7 3/4 North, 1/4 East, North Into

Database File: c:\warrior\data\cholla_schamberger # 1-3\cholla_schamberger_1-3hd.db
Dataset Pathname: dil/choctk
Presentation Format: dil2in
Dataset Creation: Wed Sep 04 09:52:38 2013
Charted by: Depth in Feet scaled 1:600

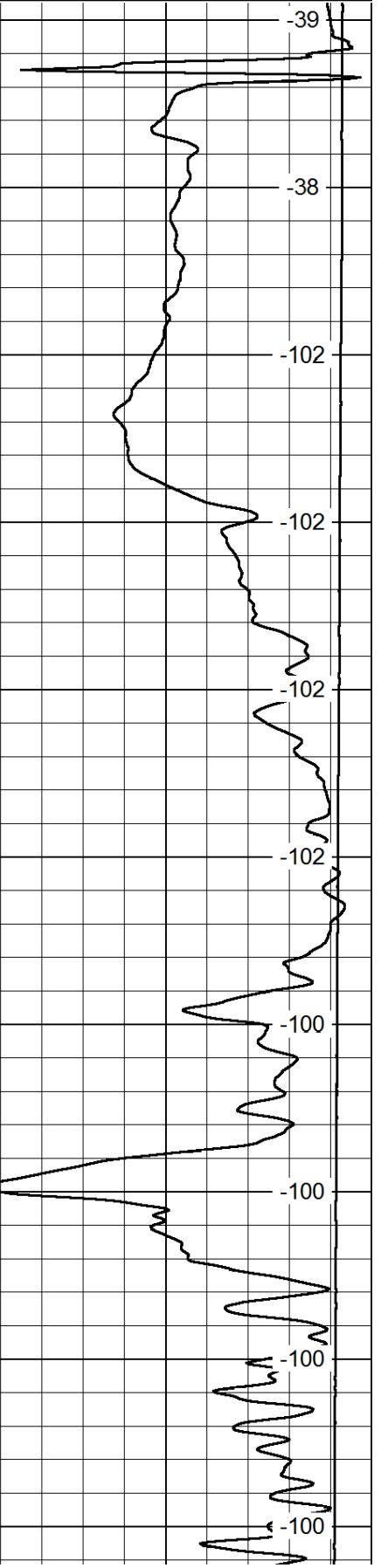
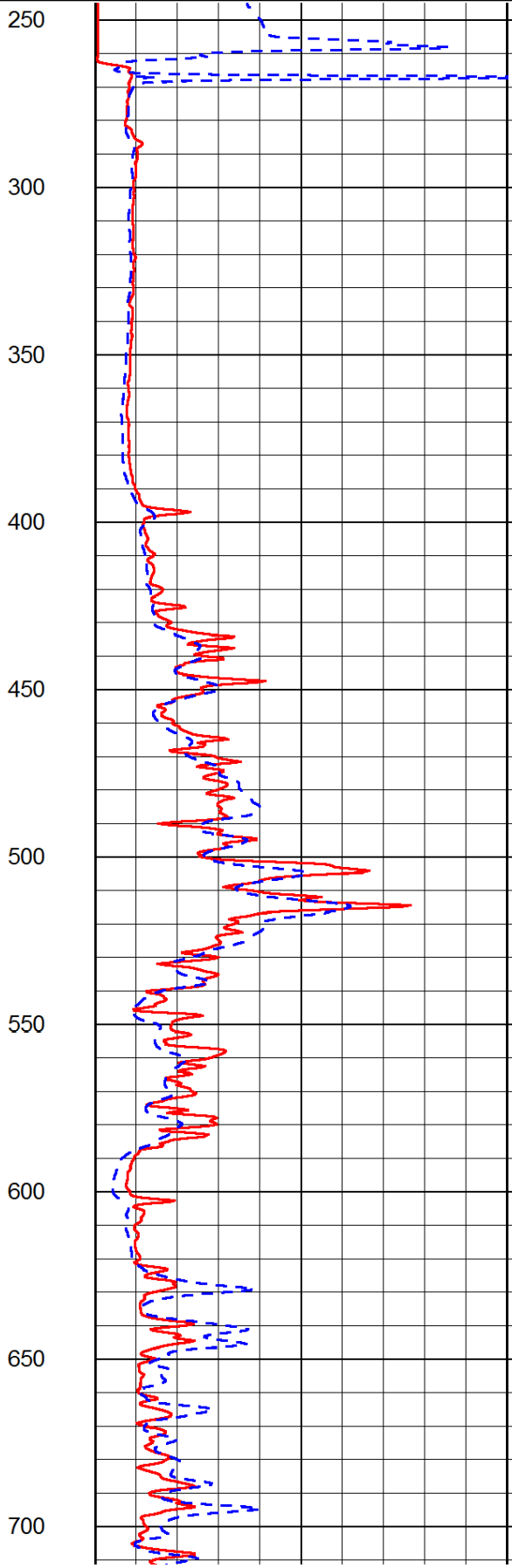
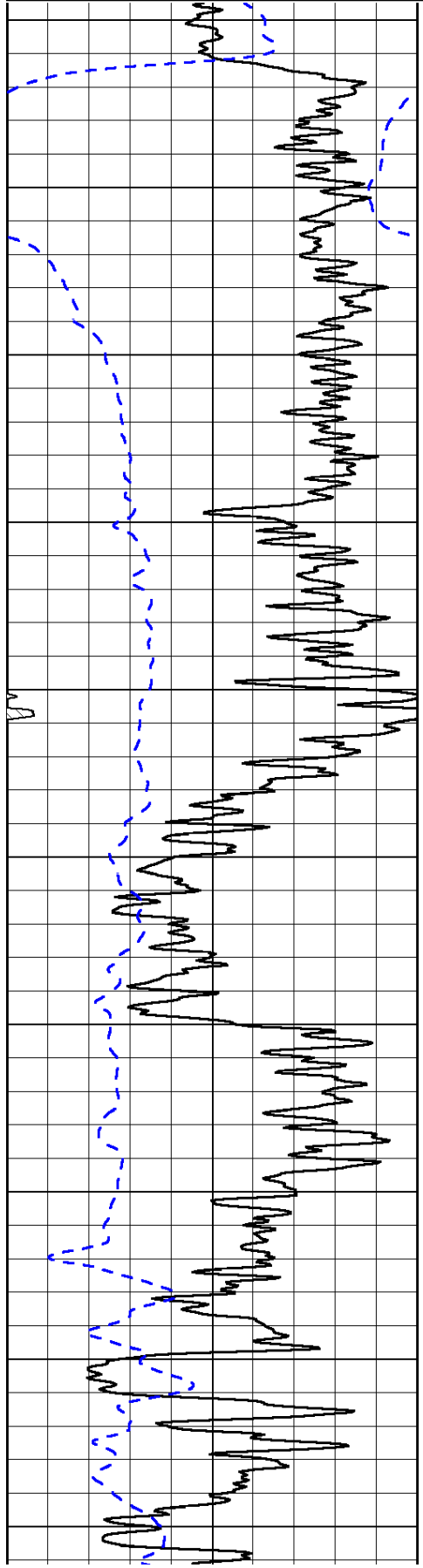
0	Gamma Ray	150
-200	SP (mV)	0

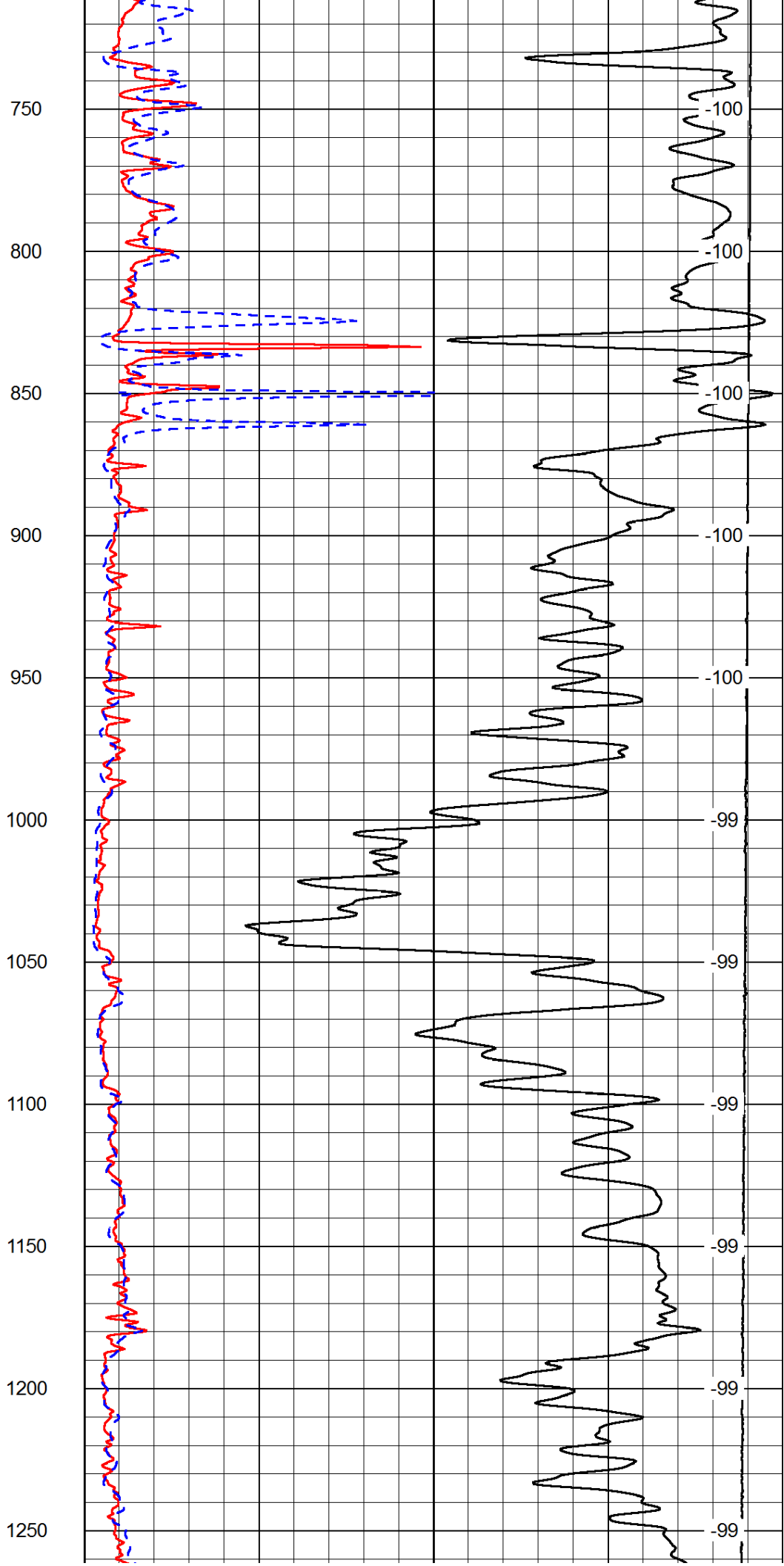
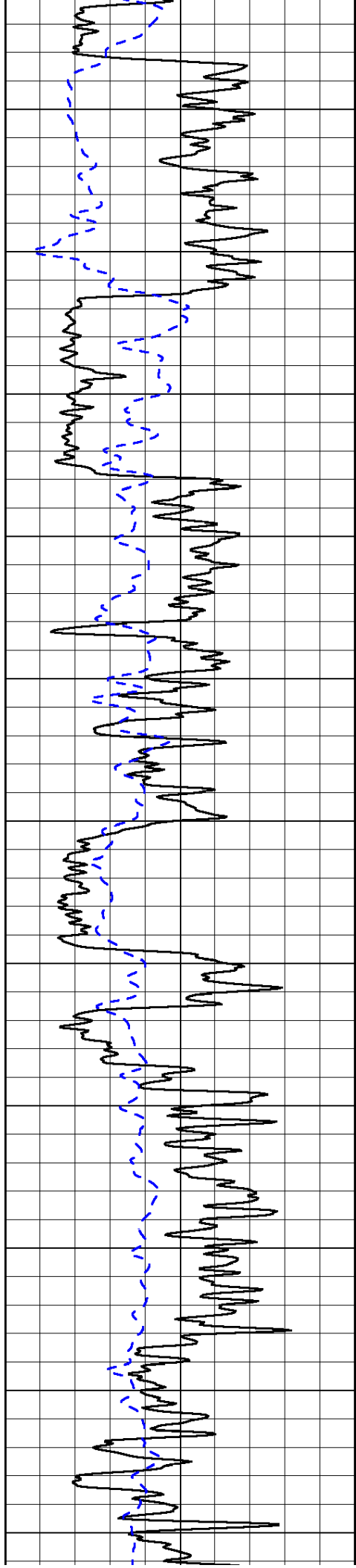
0	Shallow Resistivity	50
0	Deep Resistivity	50

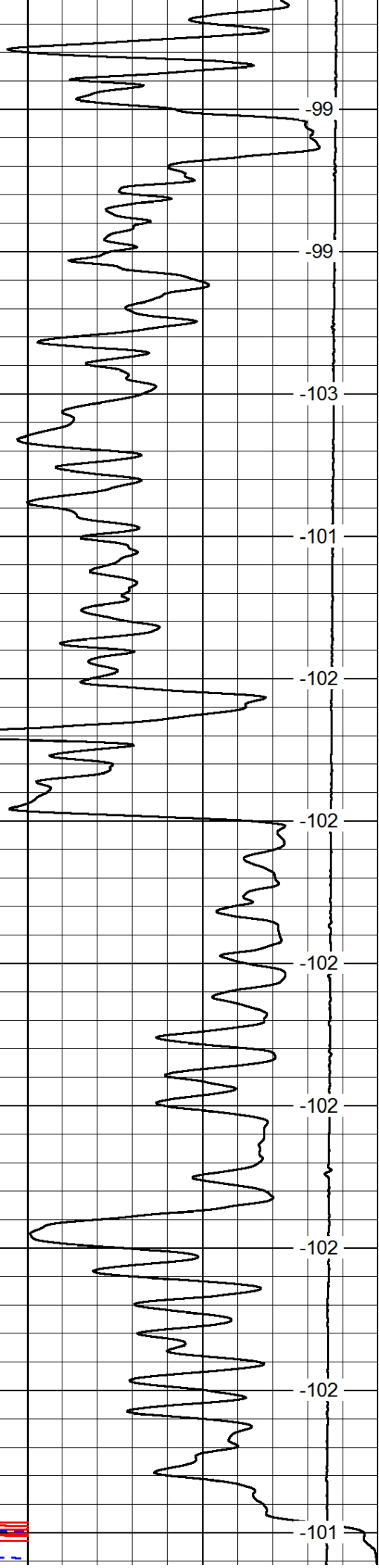
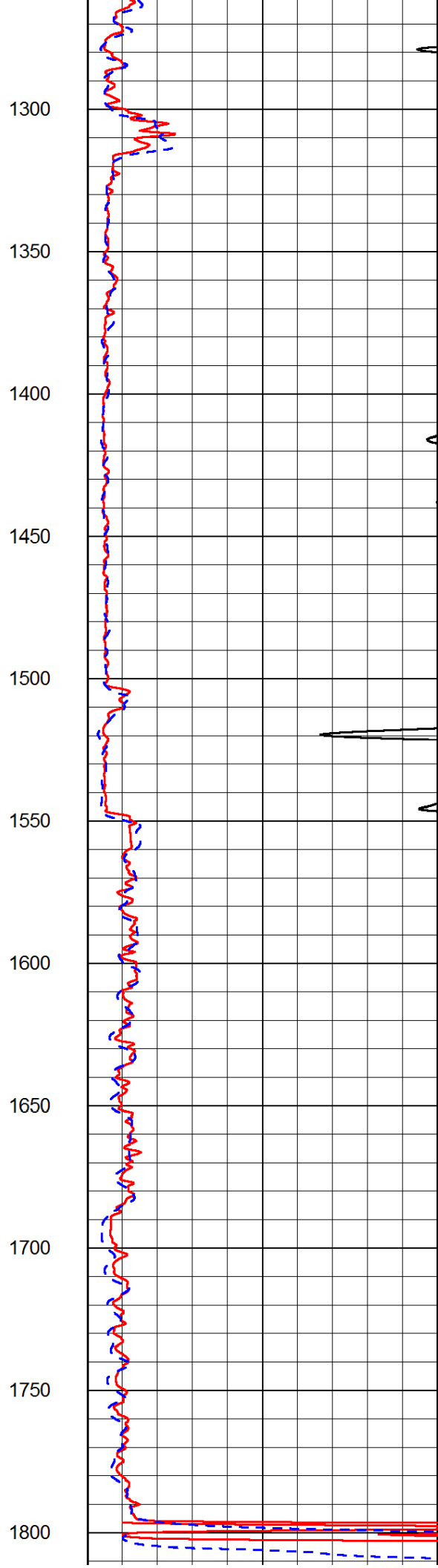
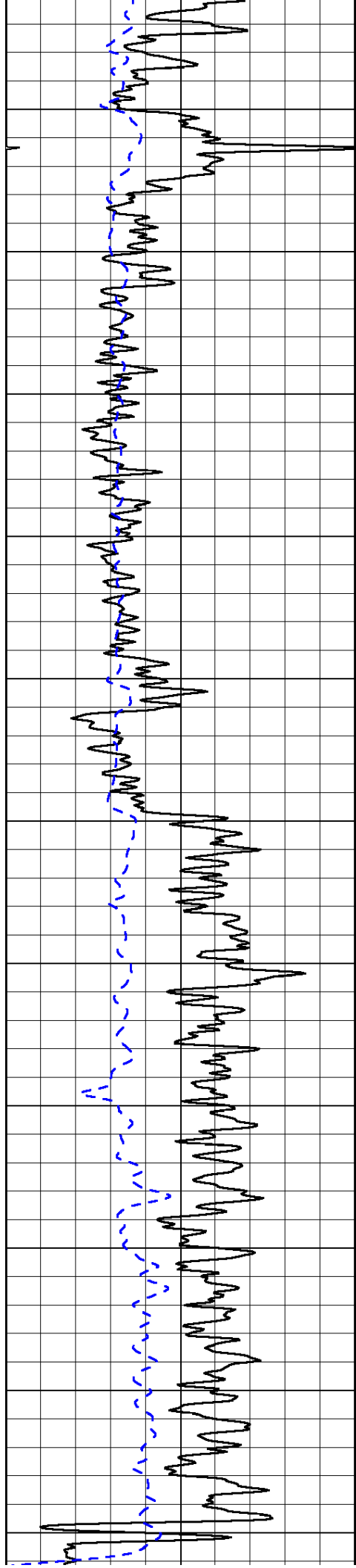
LSPD

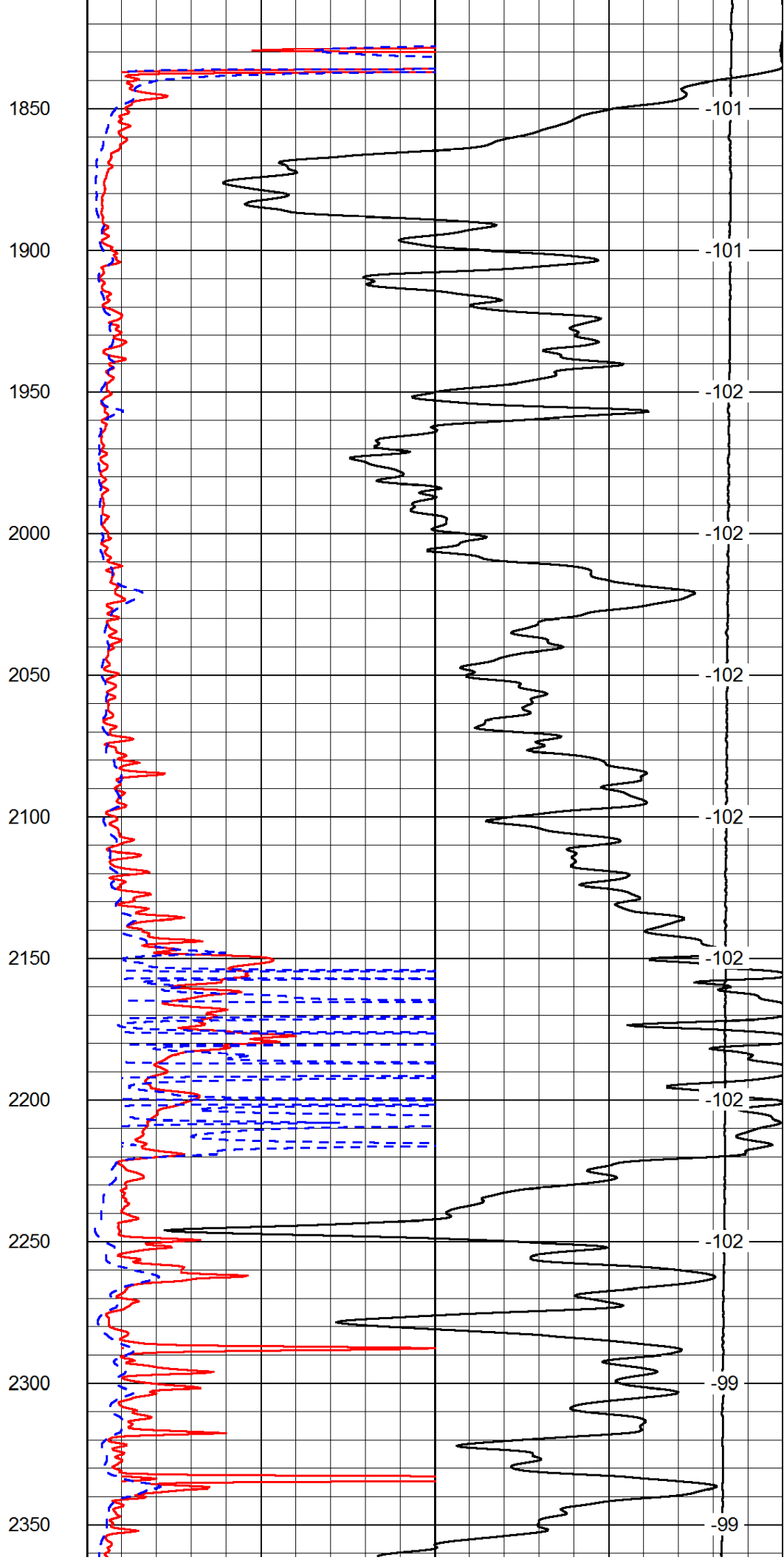
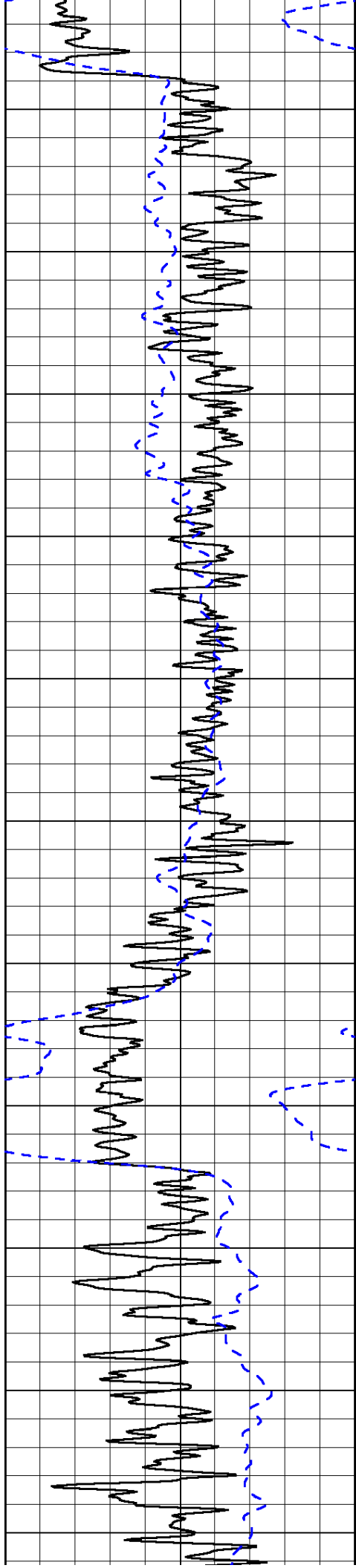
1000	Conductivity	0
15000	Line Tension	0

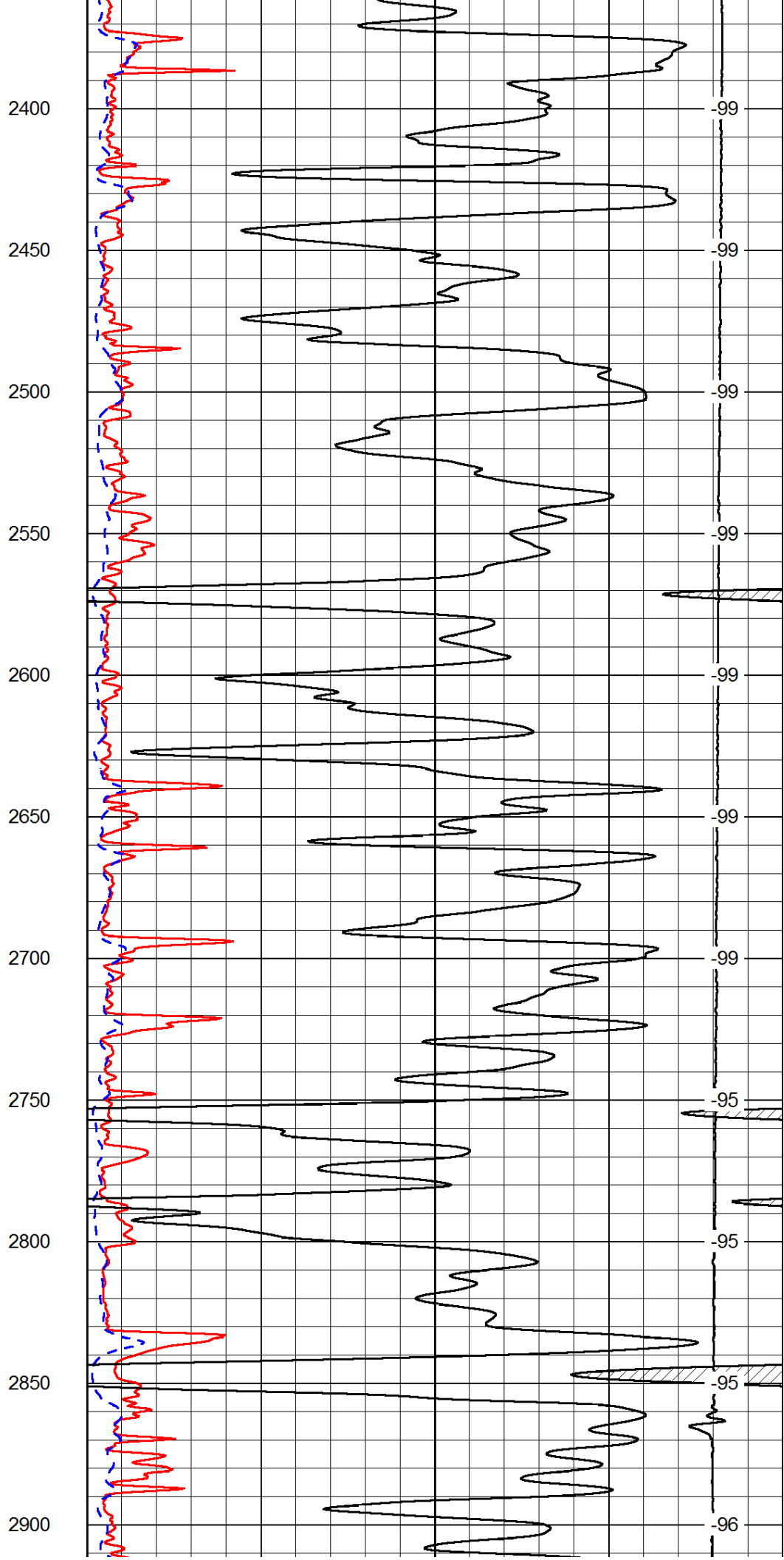
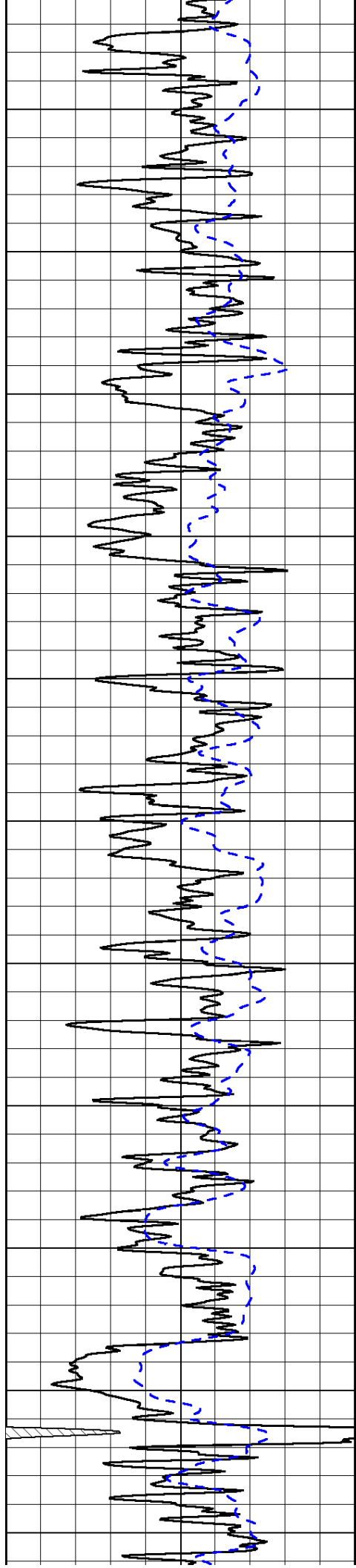
50	Shallow Resistivity	500
50	Deep Resistivity	500

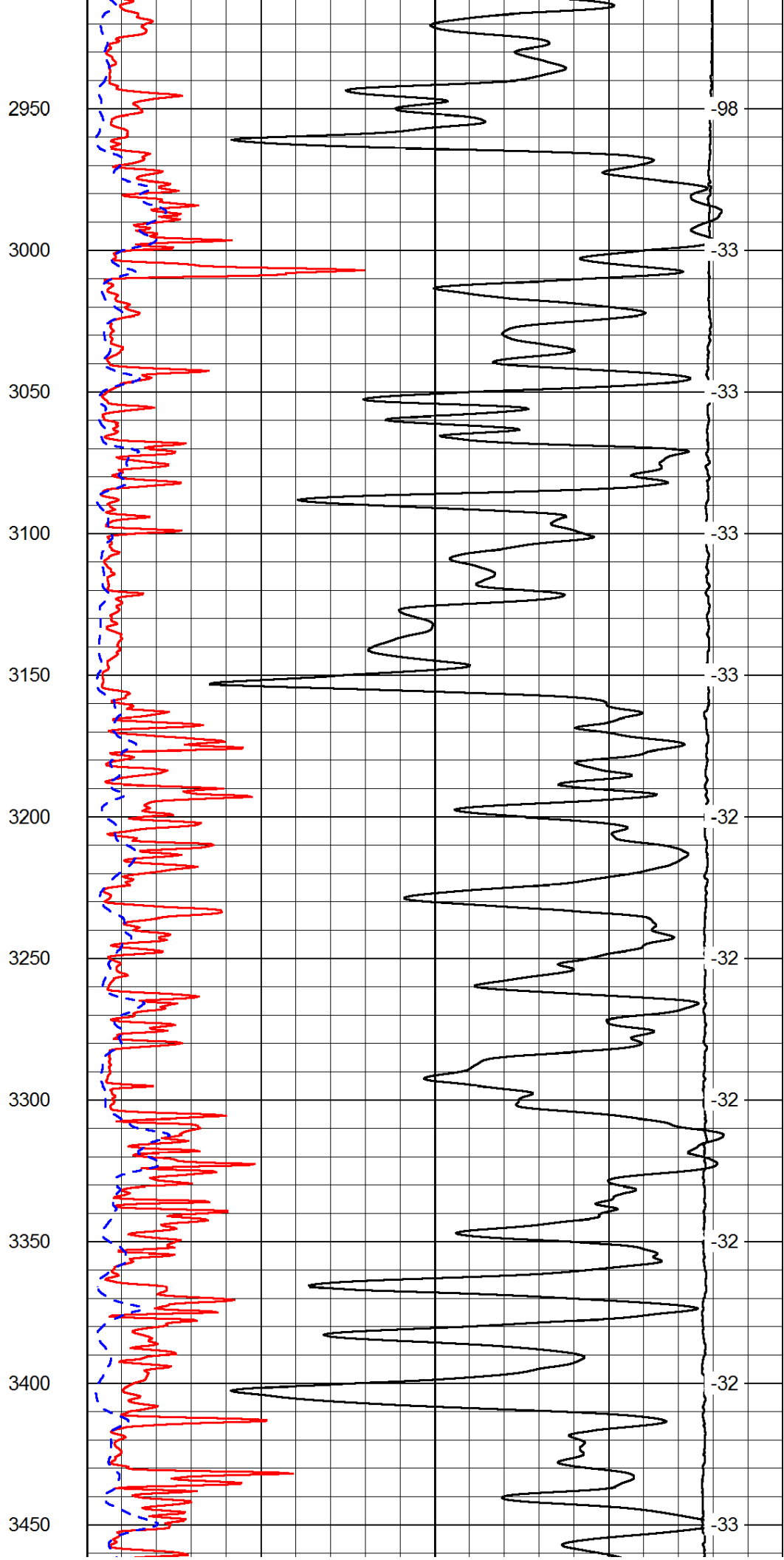
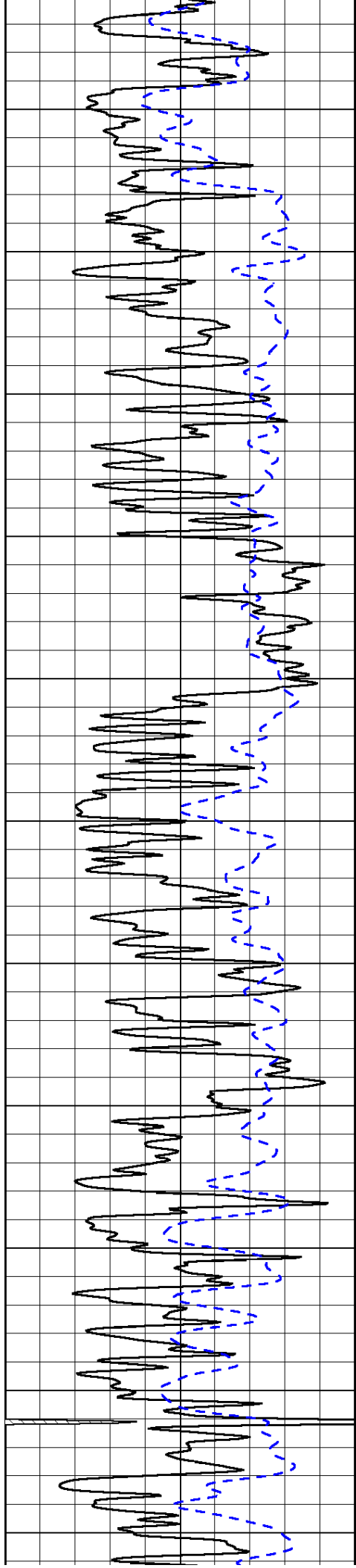


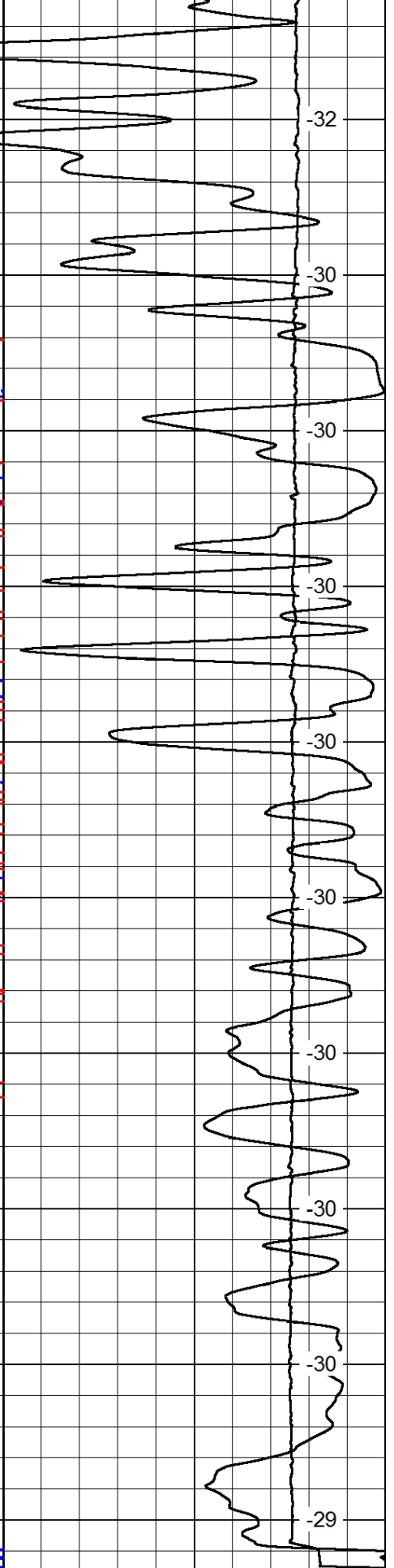
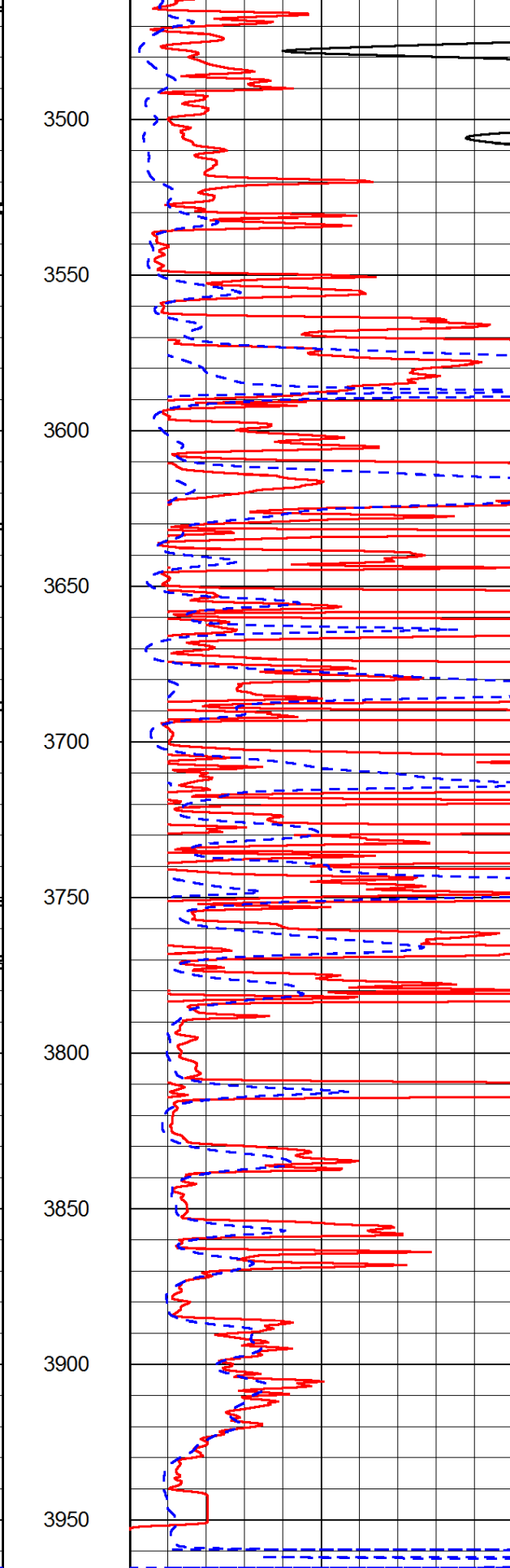
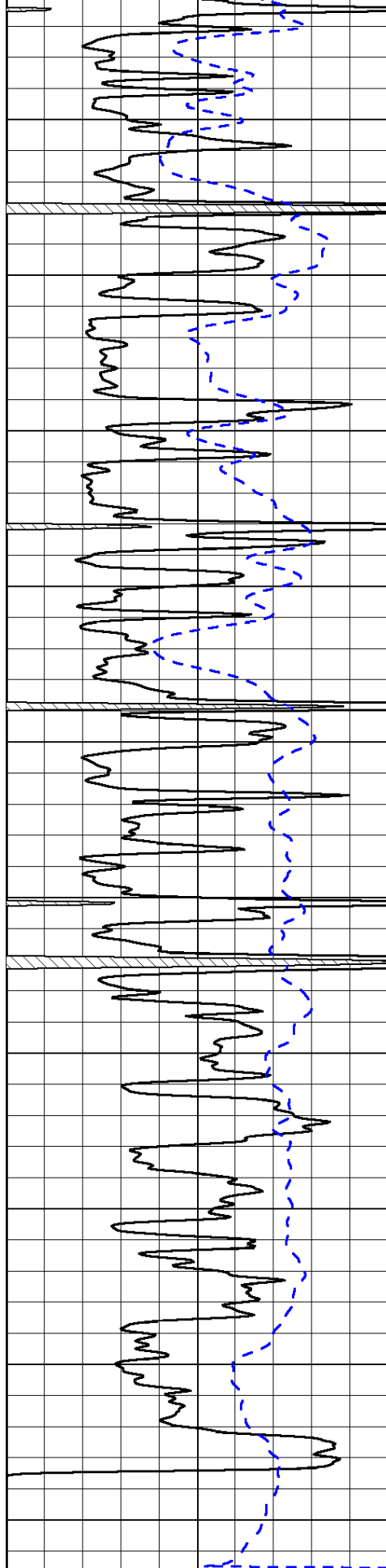












0 150

-200 0

0 50

0 50

1000 Conductivity

15000 Line Tension

0

0

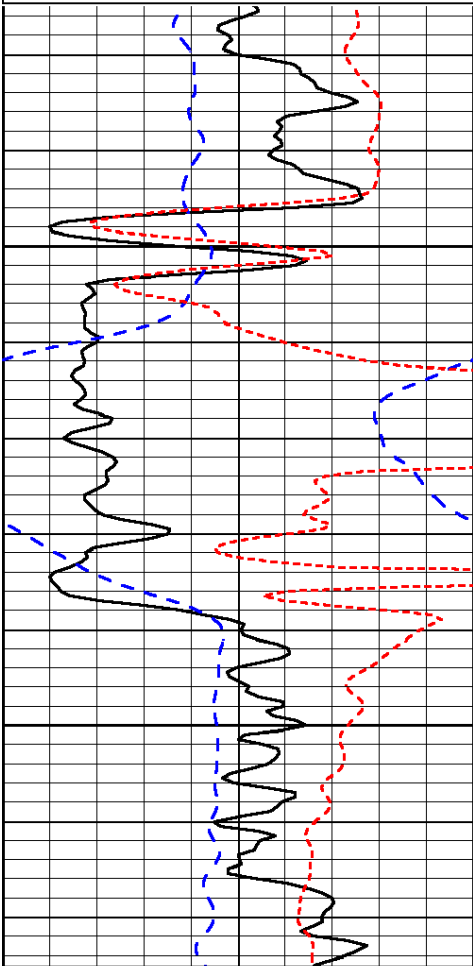
50	Shallow Resistivity	500
50	Deep Resistivity	500

Database File: c:\warrior\data\cholla_schamberger # 1-3\cholla_schamberger_1-3hd.db
 Dataset Pathname: dil/chostck
 Presentation Format: dil
 Dataset Creation: Wed Sep 04 09:52:38 2013
 Charted by: Depth in Feet scaled 1:240

0	Gamma Ray	150
-200	SP (mV)	0
-160	RxoRt	40

0.2	Deep Resistivity	2000
0.2	Medium Resistivity	2000
0.2	Shallow Resistivity	2000
15000	Line Tension	0

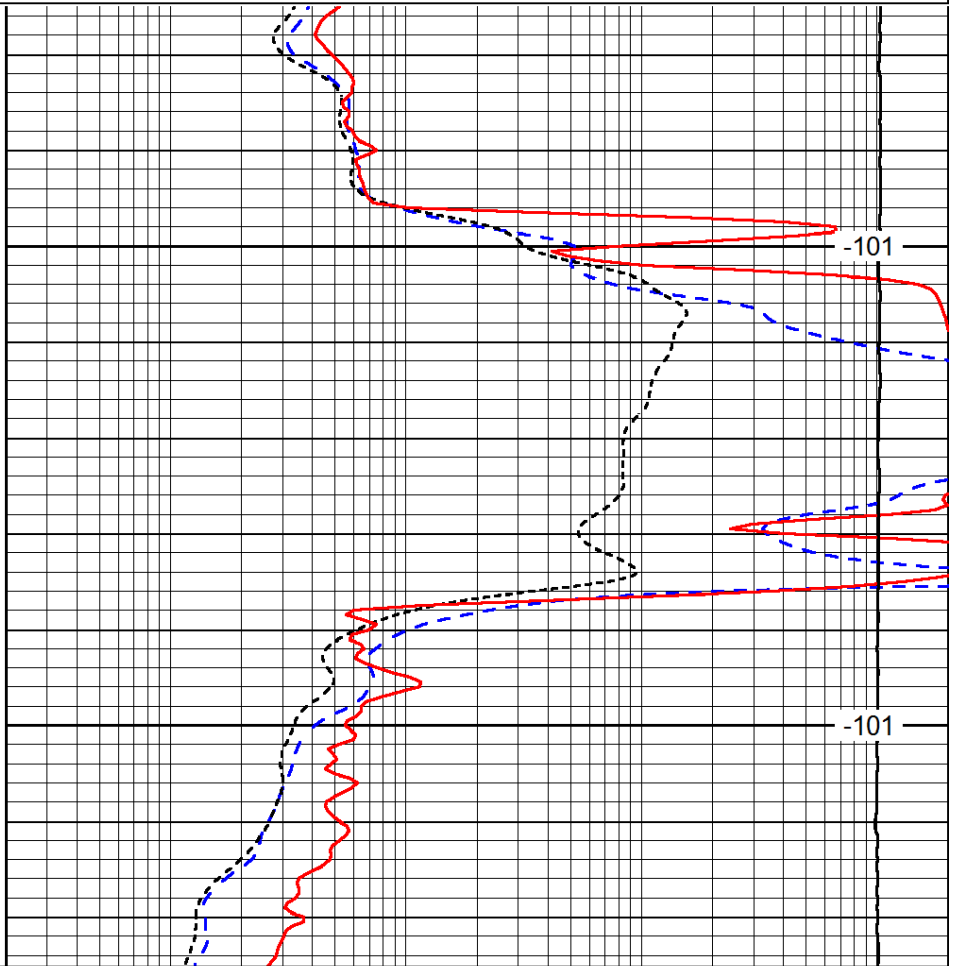
LSPD



1800

1850

0	Gamma Ray	150
-200	SP (mV)	0
-160	RxoRt	40



-101

-101

0.2	Deep Resistivity	2000
0.2	Medium Resistivity	2000
0.2	Shallow Resistivity	2000
15000	Line Tension	0

LSPD

Database File: c:\warrior\data\cholla_schamberger # 1-3\cholla_schamberger_1-3hd.db
 Dataset Pathname: dil/chostck
 Presentation Format: dil
 Dataset Creation: Wed Sep 04 09:52:38 2013
 Charted by: Depth in Feet scaled 1:240

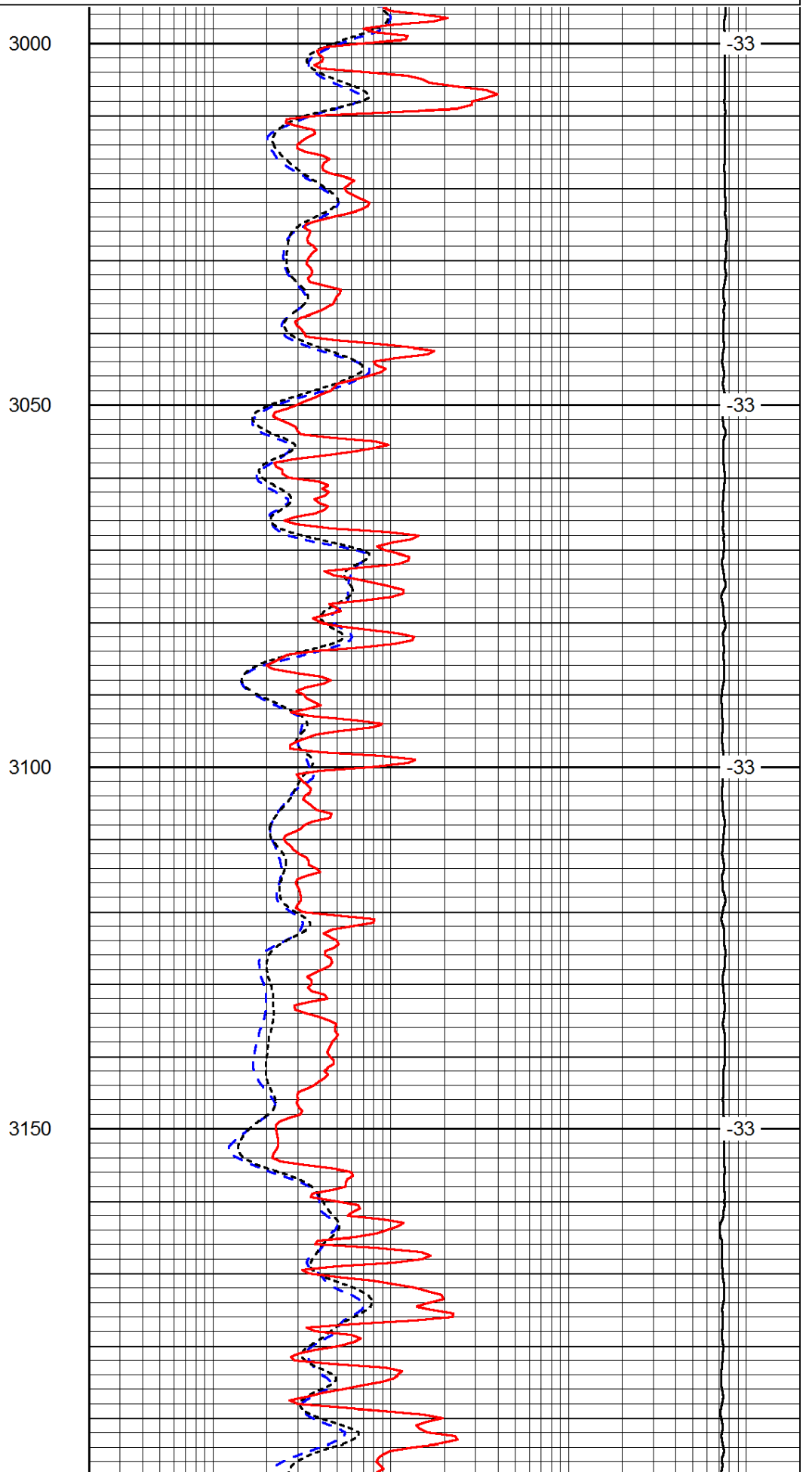
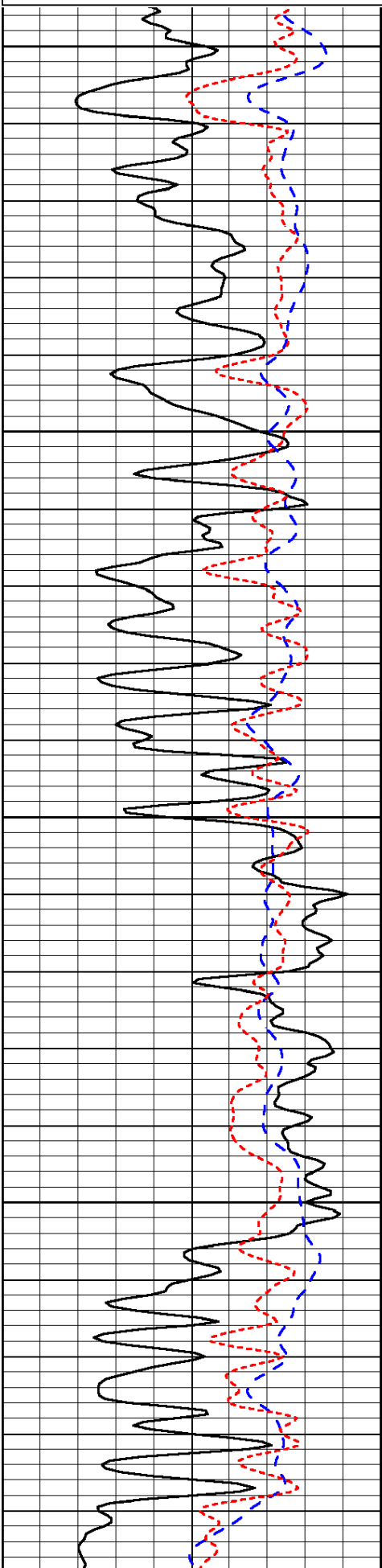
0	Gamma Ray	150
-200	SP (mV)	0

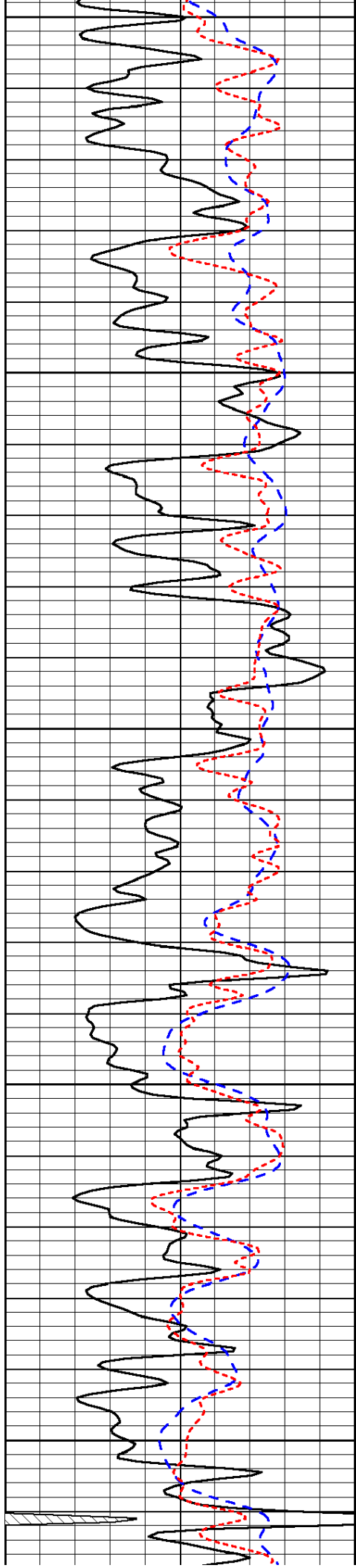
0.2	Deep Resistivity	2000
0.2	Medium Resistivity	2000

-160 RxoRt 40

0.2 Shallow Resistivity 2000
15000 Line Tension 0

LSPD





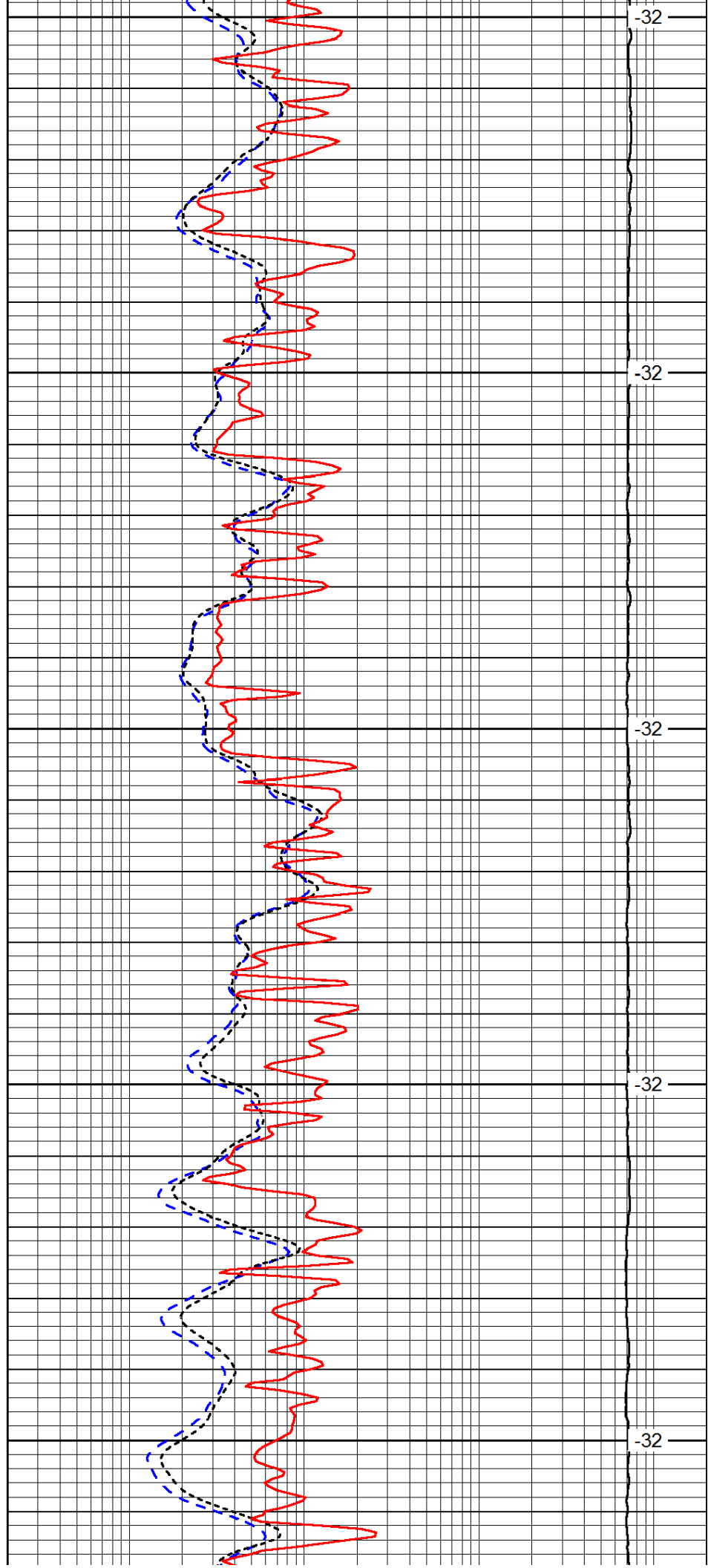
3200

3250

3300

3350

3400



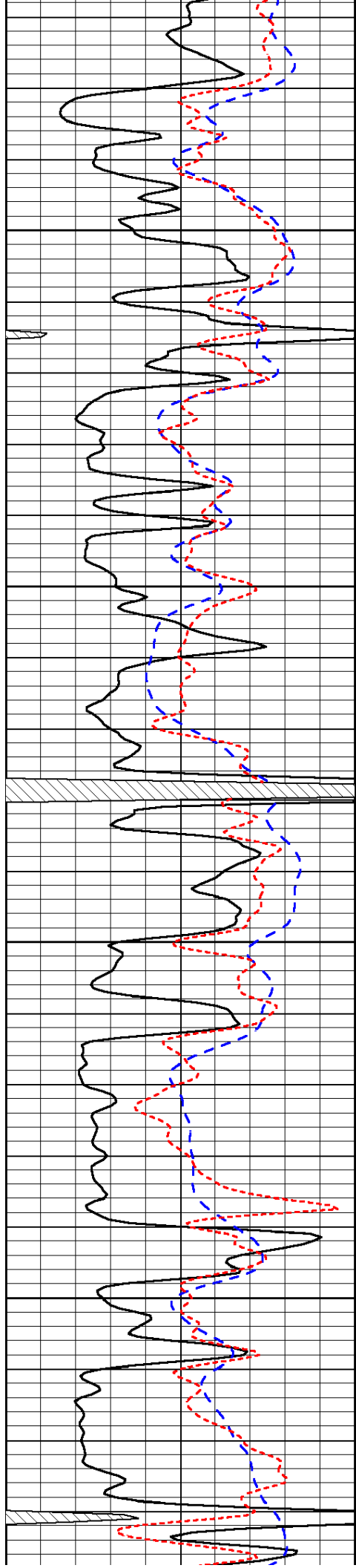
-32

-32

-32

-32

-32

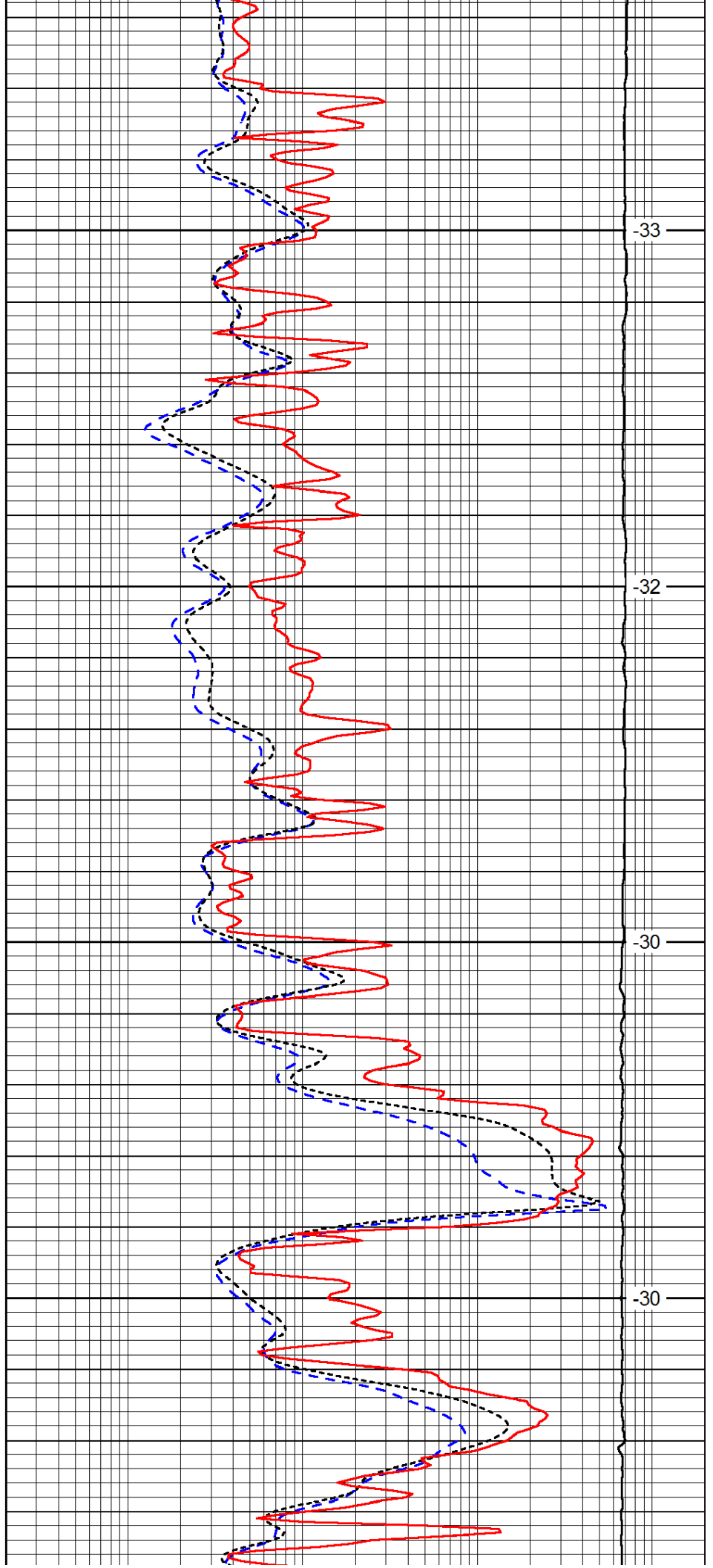


3450

3500

3550

3600

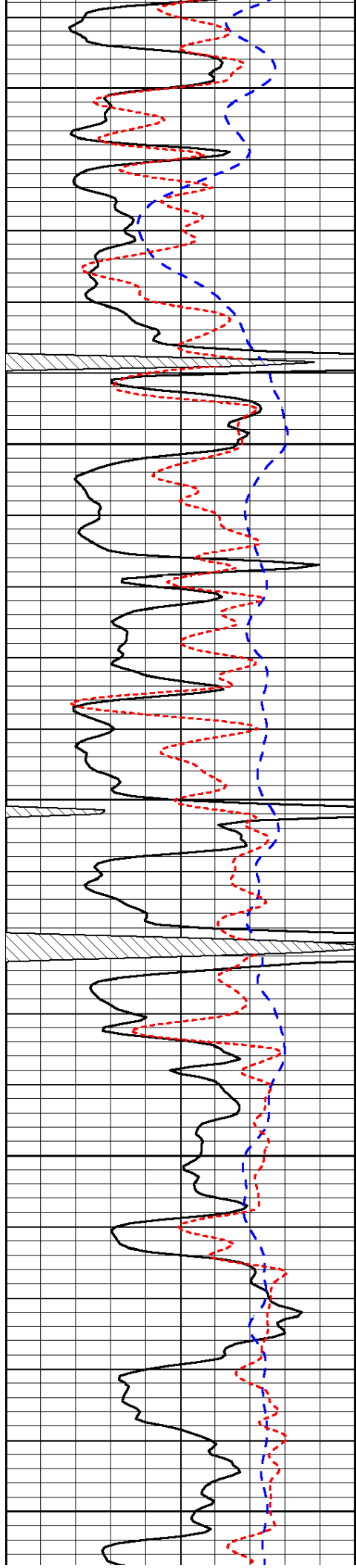


-33

-32

-30

-30



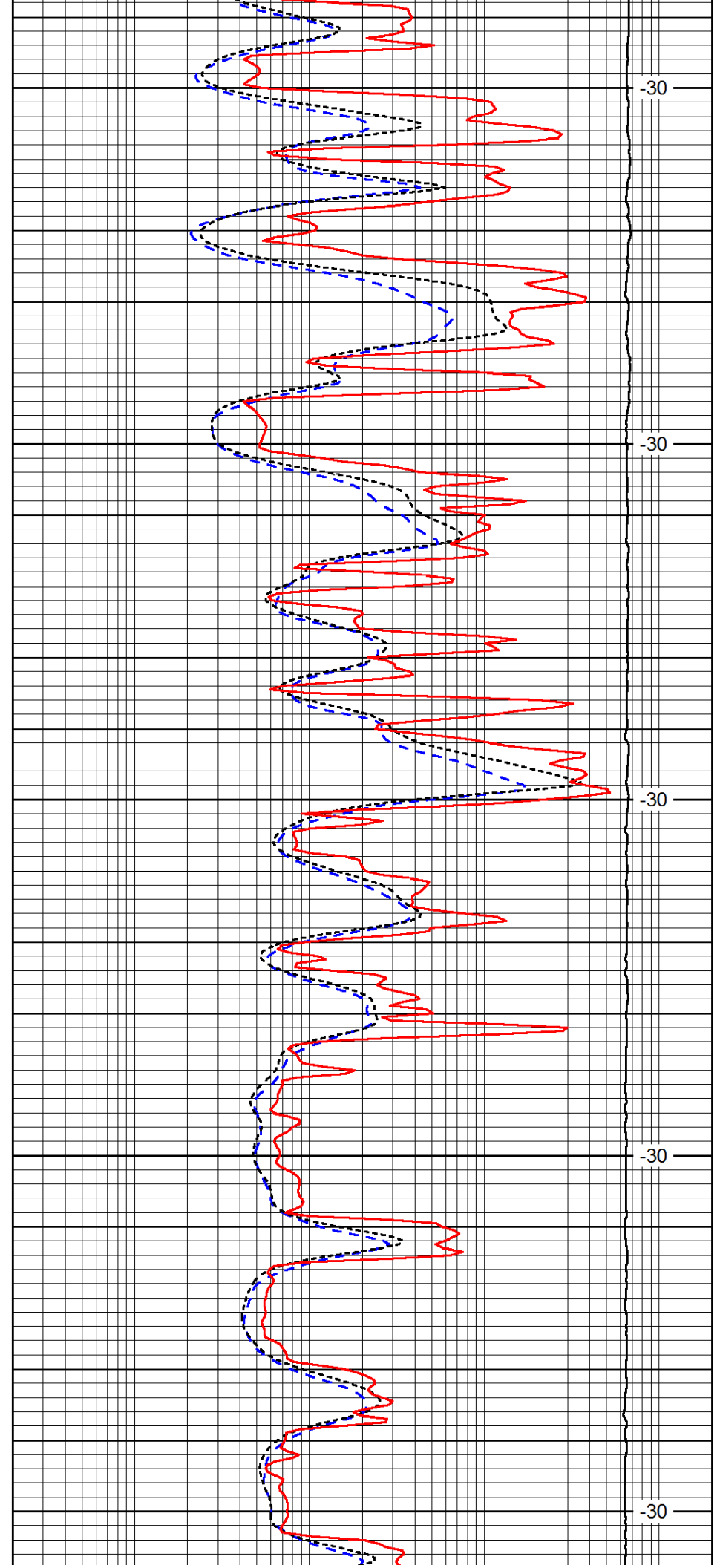
3650

3700

3750

3800

3850



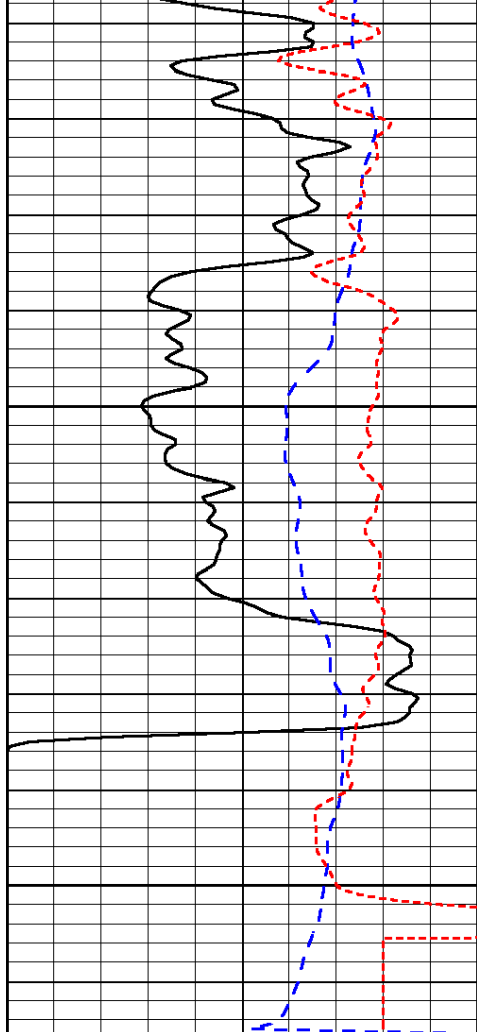
-30

-30

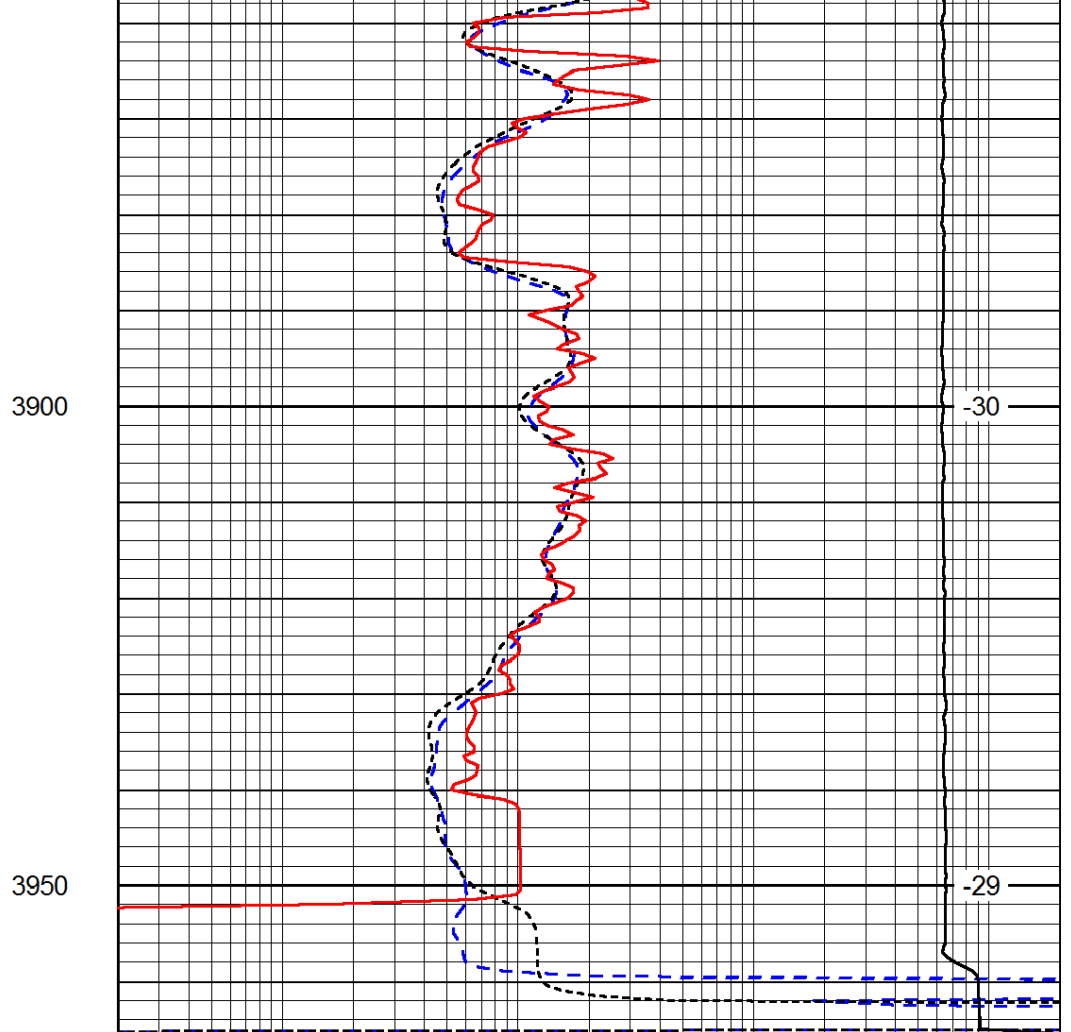
-30

-30

-30



0	Gamma Ray	150
-200	SP (mV)	0
-160	RxoRt	40



0.2	Deep Resistivity	2000
0.2	Medium Resistivity	2000
0.2	Shallow Resistivity	2000
15000	Line Tension	0

LSPD