



Pioneer Energy Services

Microresistivity Log

API No.	15-167-23929-00-00		
Company	Prospect Oil & Gas Corp.		
Well	Big Canyons Ranch # 1		
Field	Machin		
County	Russell	State	Kansas
Location	1090' FNL & 505' FWL		
Sec: 4	Twp: 13 S	Rge: 14 W	Other Services CNL/CDL DIL

Permanent Datum	Ground Level	Elevation	1779
Log Measured From	Kelly Bushing	7	Ft. Above Perm. Datum
Drilling Measured From	Kelly Bushing		
Date	12-30-2013		
Run Number	Two		
Depth Driller	3320		
Depth Logger	3319		
Bottom Logged Interval	3318		
Top Log Interval	2600		
Casing Driller	8.625 @ 231		
Casing Logger	220		
Bit Size	7.875		
Type Fluid in Hole	Chemical		
Salinity, ppm CL	2000		
Density / Viscosity	9.0	56	
pH / Fluid Loss	10.5	6.8	
Source of Sample	Flowline		
Rm @ Meas. Temp	0.54	@	38
Rmf @ Meas. Temp	0.40	@	38
Rmc @ Meas. Temp	0.72	@	38
Source of Rmf / Rmc	Charts		
Rm @ BHT	0.18	@	111
Operating Rig Time	3 1/2 Hours		
Max Rec. Temp. F	111		
Equipment Number	91		
Location	Hays		
Recorded By	Y. Ruiz		
Witnessed By	Brad Hutchison		

<<< Fold Here >>>

All interpretations are opinions based on inferences from electrical or other measurements and we cannot and do not guarantee the accuracy or correctness of any interpretation, and we shall not, except in the case of gross or willful negligence on our part, be liable or responsible for any loss, costs, damages, or expenses incurred or sustained by anyone resulting from any interpretation made by any of our officers, agents or employees. These interpretations are also subject to our general terms and conditions set out in our current Price Schedule.

Comments

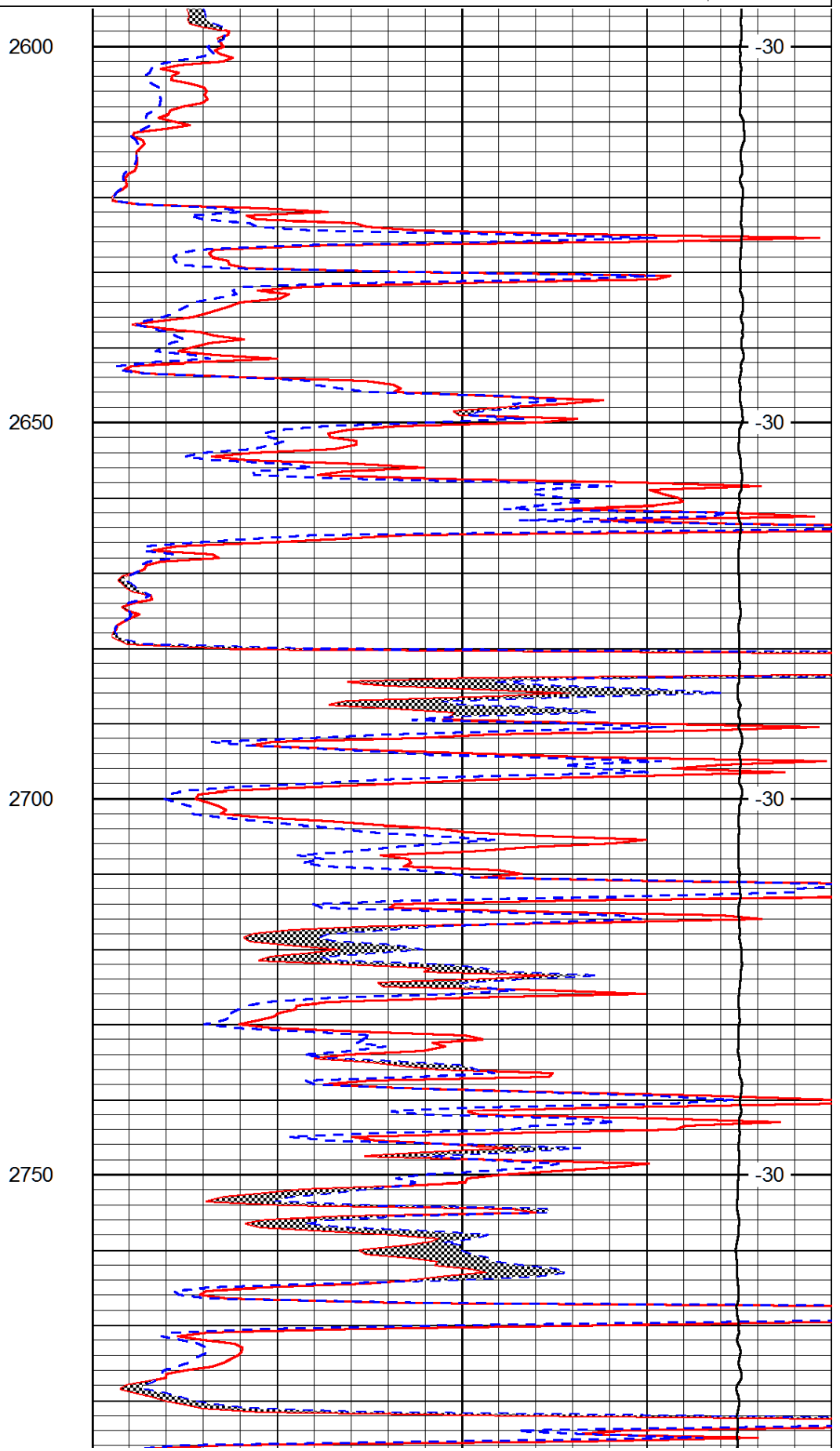
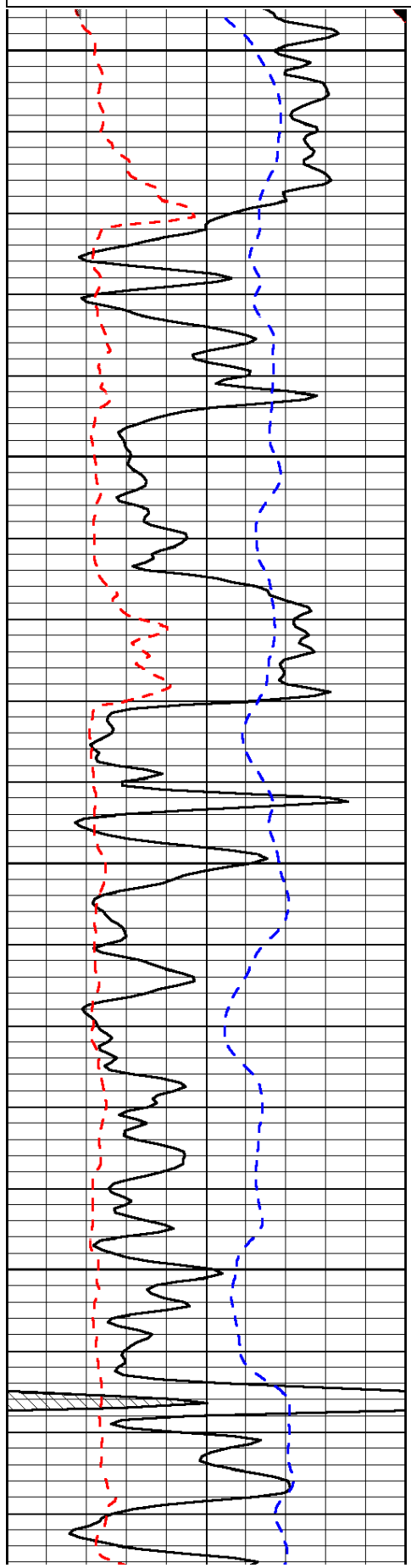
Thank you for using Log-Tech, Inc.
 (785) 625-3858
 Russell,
 North to Shoreline Rd, 1 1/2 West to 183 Rd,
 1 North, 1/2 west, 1 1/2 North,
 East into

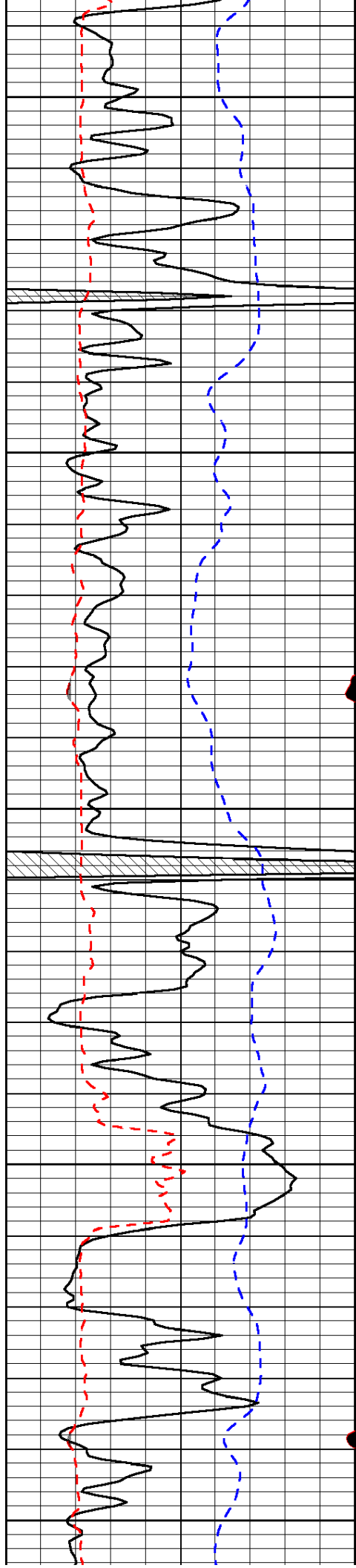
Database File:	prospect_123013hd.db
Dataset Pathname:	DIL/@00000e60
Presentation Format:	micro
Dataset Creation:	Mon Dec 30 13:25:32 2013
Charted by:	Depth in Feet scaled 1:240

0	Gamma Ray (GAPI)	150
6	MCAL (in)	16
2.875	Mud Cake (in)	7.875
-200	SP (mV)	0

0	Micro Inverse 1 X 1 (Ohm-m)	40
0	Micro Normal 2" (Ohm-m)	40
10000	Line Weight (lb)	0

LSPD
(ft/min)





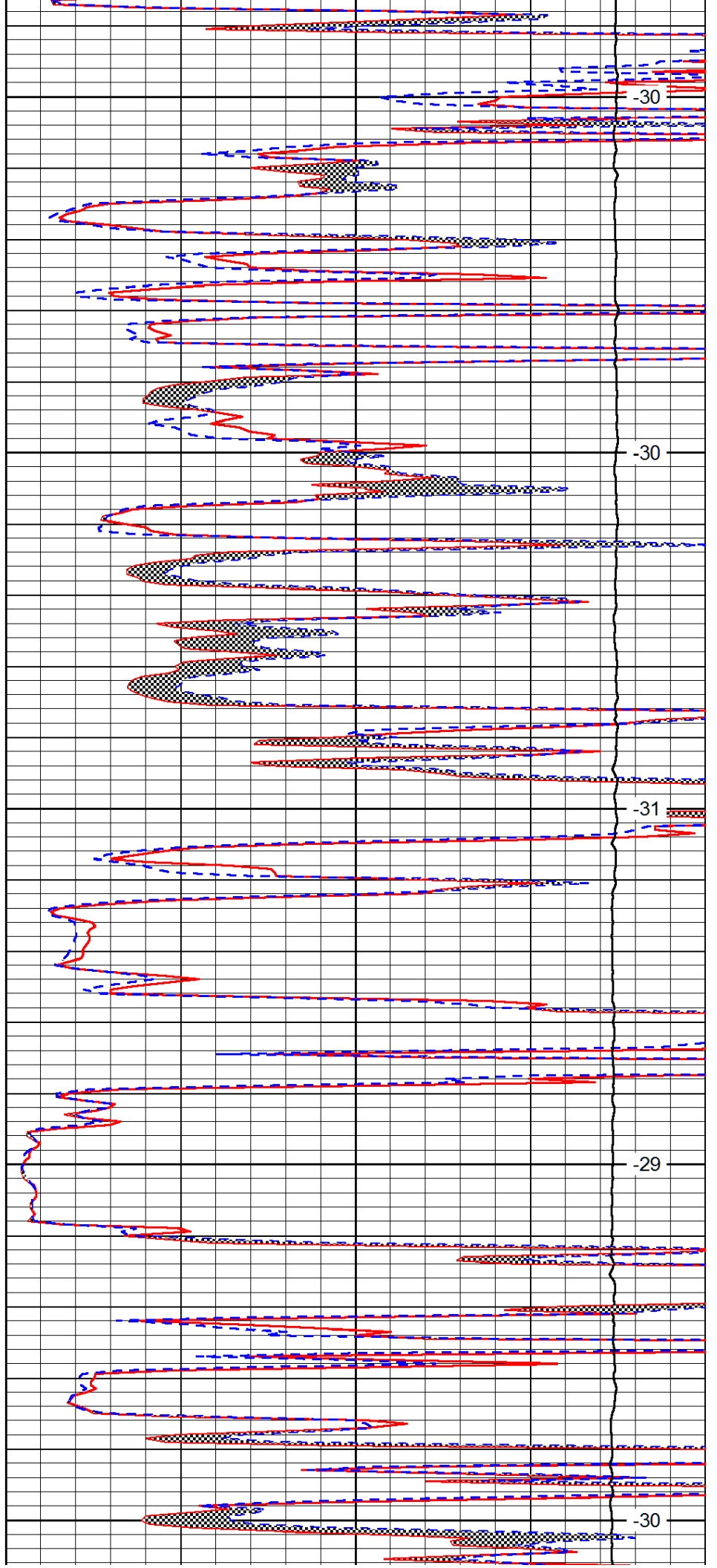
2800

2850

2900

2950

3000



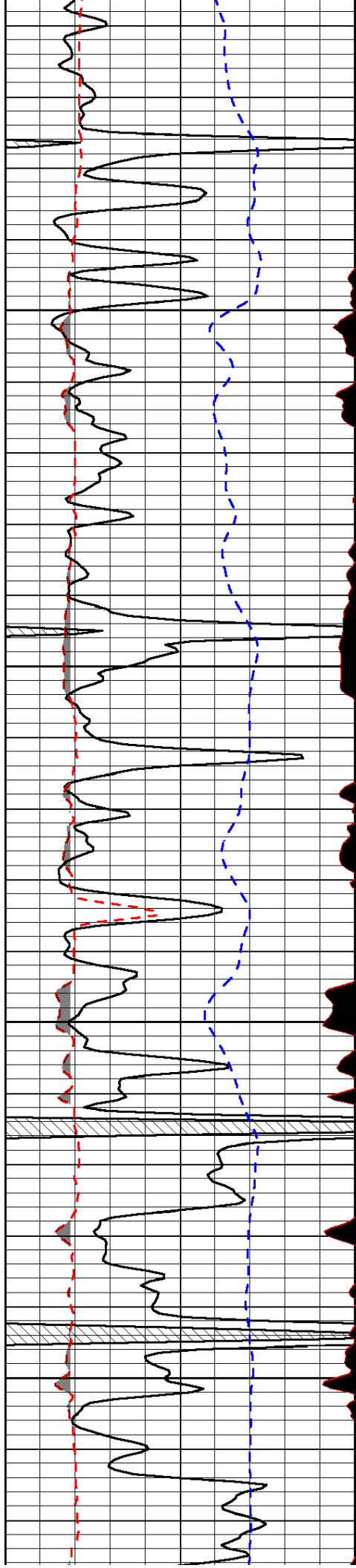
-30

-30

-31

-29

-30

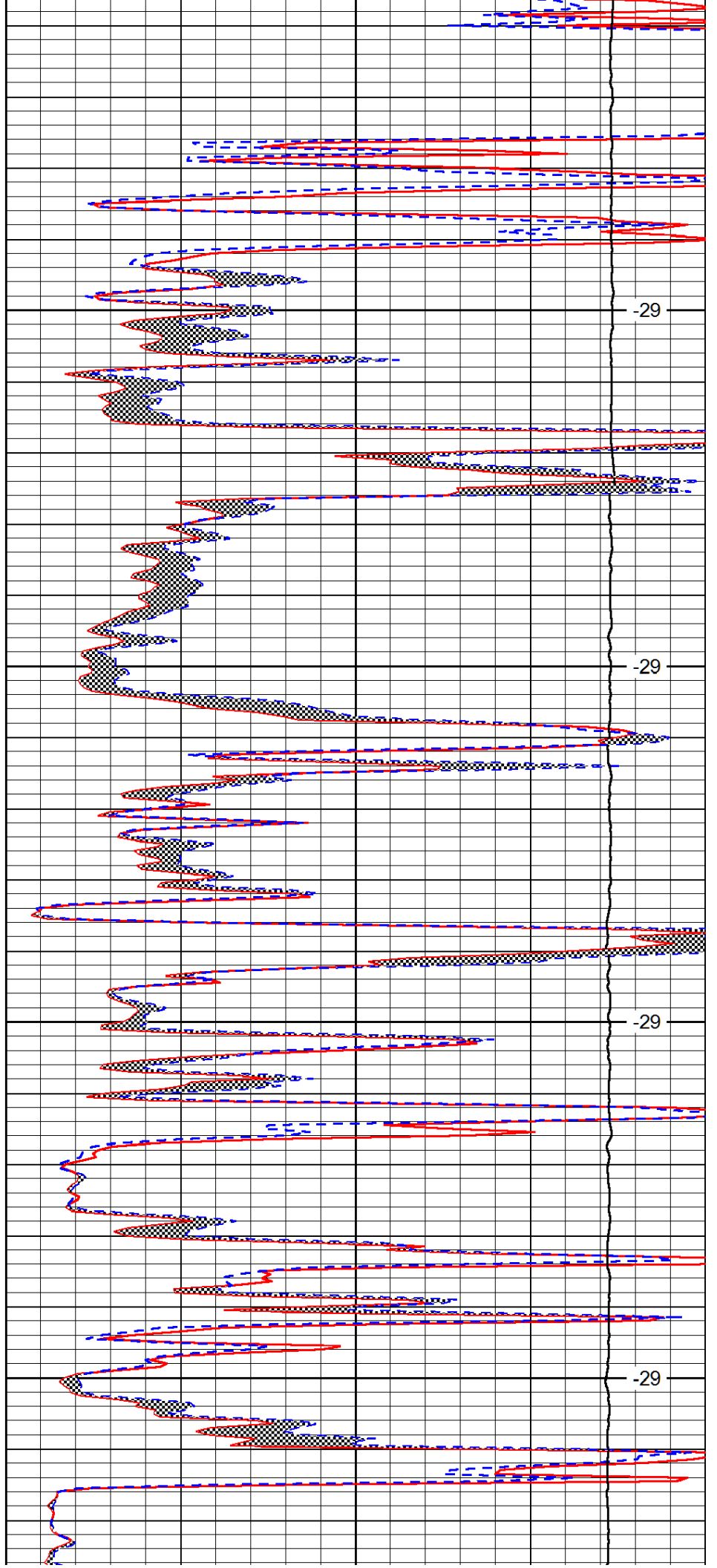


3050

3100

3150

3200

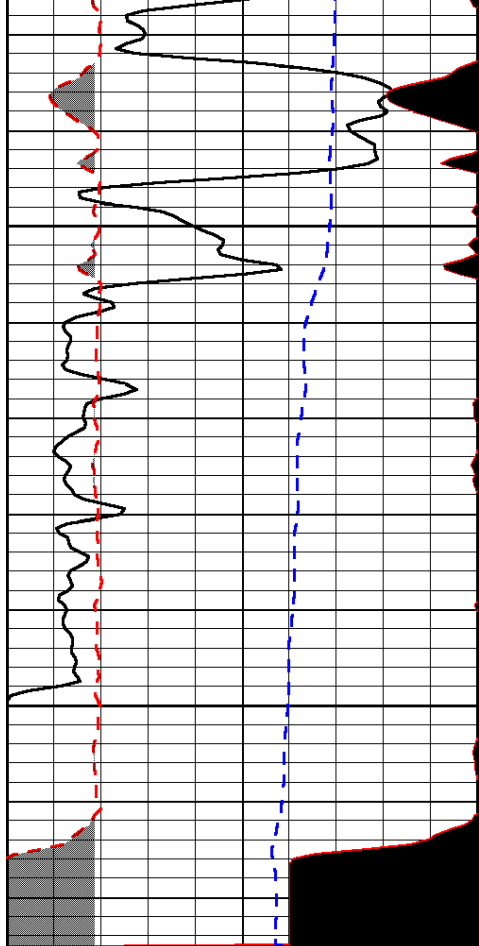


-29

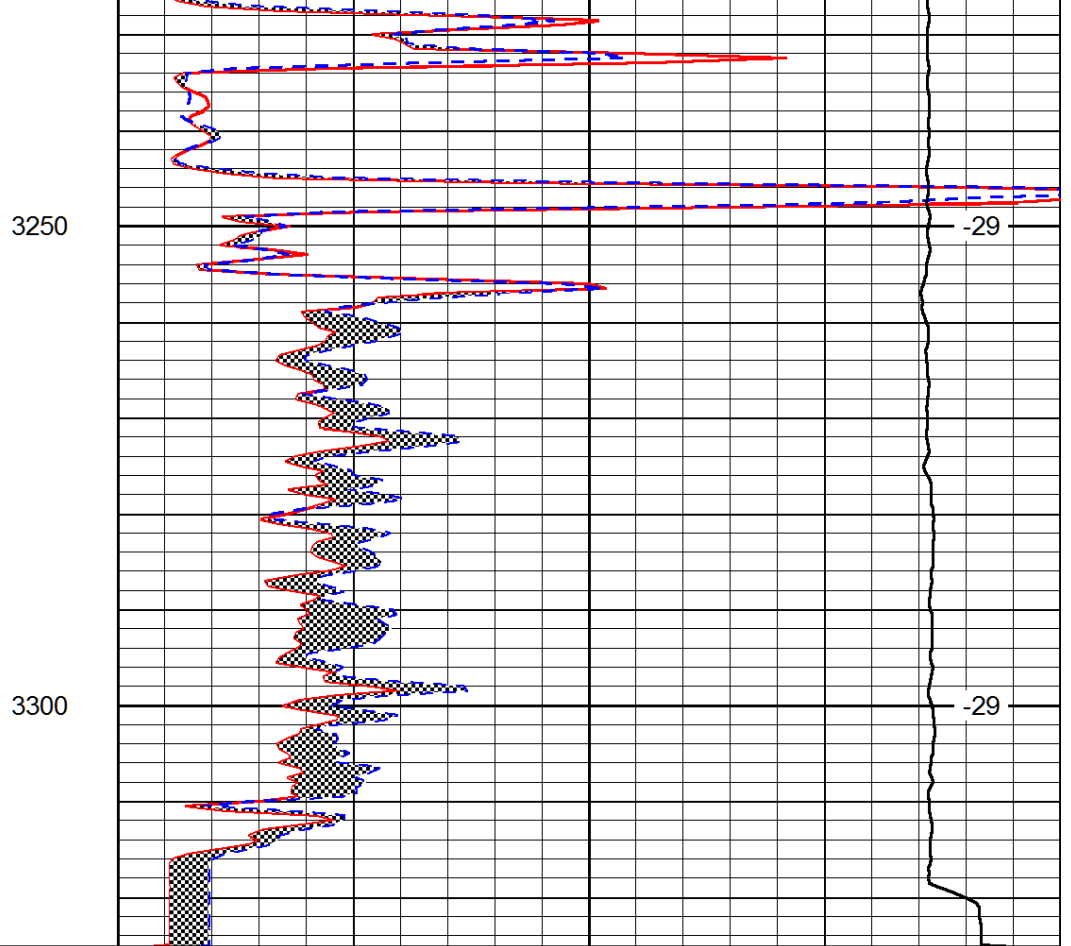
-29

-29

-29



0	Gamma Ray (GAPI)	150
6	MCAL (in)	16
2.875	Mud Cake (in)	7.875
-200	SP (mV)	0



0	Micro Inverse 1 X 1 (Ohm-m)	40
0	Micro Normal 2" (Ohm-m)	40
10000	Line Weight (lb)	0

LSPD (ft/min)
