



**MIDWEST SURVEYS**  
 LOGGING - PERFORATING - CONSULTING SERVICES  
 P. O. Box 68, Osawatomie, KS 68084  
 913 / 755 - 2128

**GAMMA RAY / NEUTRON / CCL**

File No. Company Piqua Petro, Inc.  
 Well Hammond "E" No. 66-14  
 Field Vernon  
 County Woodson State Kansas

Location 500' FNL & 2470' FEL  
 SW-NW-NW-NE  
 Sec. 8 Type 24S Rge. 16e  
 Permanent Datum GL Elevation NA  
 Log Measured From GL  
 Drilling Measured From GL

Date 03-25-2014  
 Run Number One  
 Depth Driller 1112.0  
 Depth Logger 1101.3  
 Bottom Logged Interval 200.0  
 Top Log Interval Full

Type Fluid Water  
 Density / Viscosity NA  
 Salinity - PPM Cl NA  
 Max. Recorded Temp NA  
 Estimated Cement Top 0.0  
 Equipment No. 107 Location Sawstome  
 Recorded By Steve Winklich  
 Witnessed By Adam Speicher

BOREHOLE RECORD		CASING RECORD	
RUN No.	BIT FROM TO	SIZE FROM TO	WGT. FROM TO
One	9.875" 0.0 42.0	7.00" 0.0 17.0"	0.0 0.0
Two	3.625" 42.0 112.0	2.875" 0.0 6.5"	0.0 1107.0

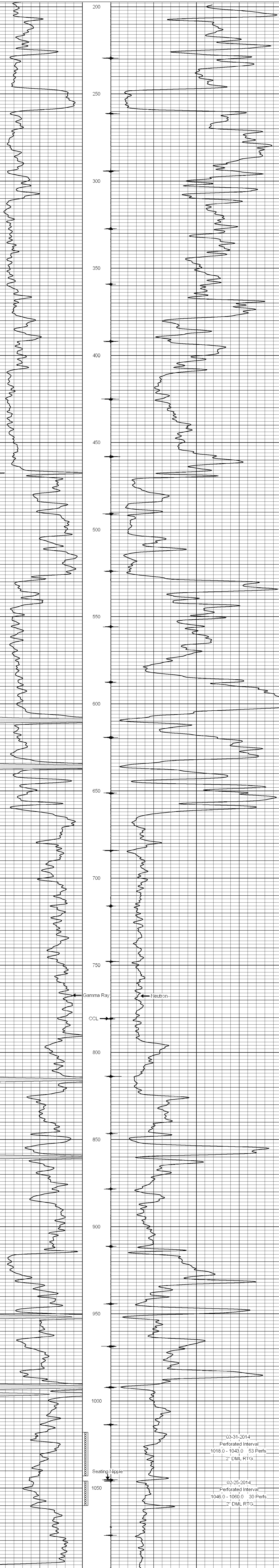
<<< Fold Here >>>

All interpretations are opinions based on inferences from electrical or other measurements and we cannot and do not guarantee the accuracy or correctness of any interpretation, and we shall not, except in the case of gross or willful negligence on our part, be liable or responsible for any loss, costs, damages, or expenses incurred or sustained by anyone resulting from any interpretation made by any of our officers, agents or employees. These interpretations are also subject to our general terms and conditions set out in our current Price Schedule.

Comments

Drilling Contractor :  
 John Leis Oil Services

Database File: hammond66-14e.db  
 Dataset Pathname: pass1  
 Presentation Format: gr-n-ccl  
 Dataset Creation: Tue Feb 25 10:20:16 2014 by Log SCH 111116  
 Charted by: Depth in Feet scaled 1:240



0 Gamma Ray (cps) 150  
 150 Gamma Ray (cps) 300  
 -1 CCL 1  
 10 Neutron (cps) 2100