

**Company** HAWKINS OIL  
**Well** ALLEN MEMORIAL HOSPITAL # 2 A  
**Field** ELDORADO  
**Country** U.S.A  
**State/Prv** KANSAS

**Company** HAWKINS OIL LLC.

**Well** ALLEN MEMORIAL HOSPITAL # 2 A

**Field** ELDORADO

**Country** U.S.A.

**State/Prv** KANSAS

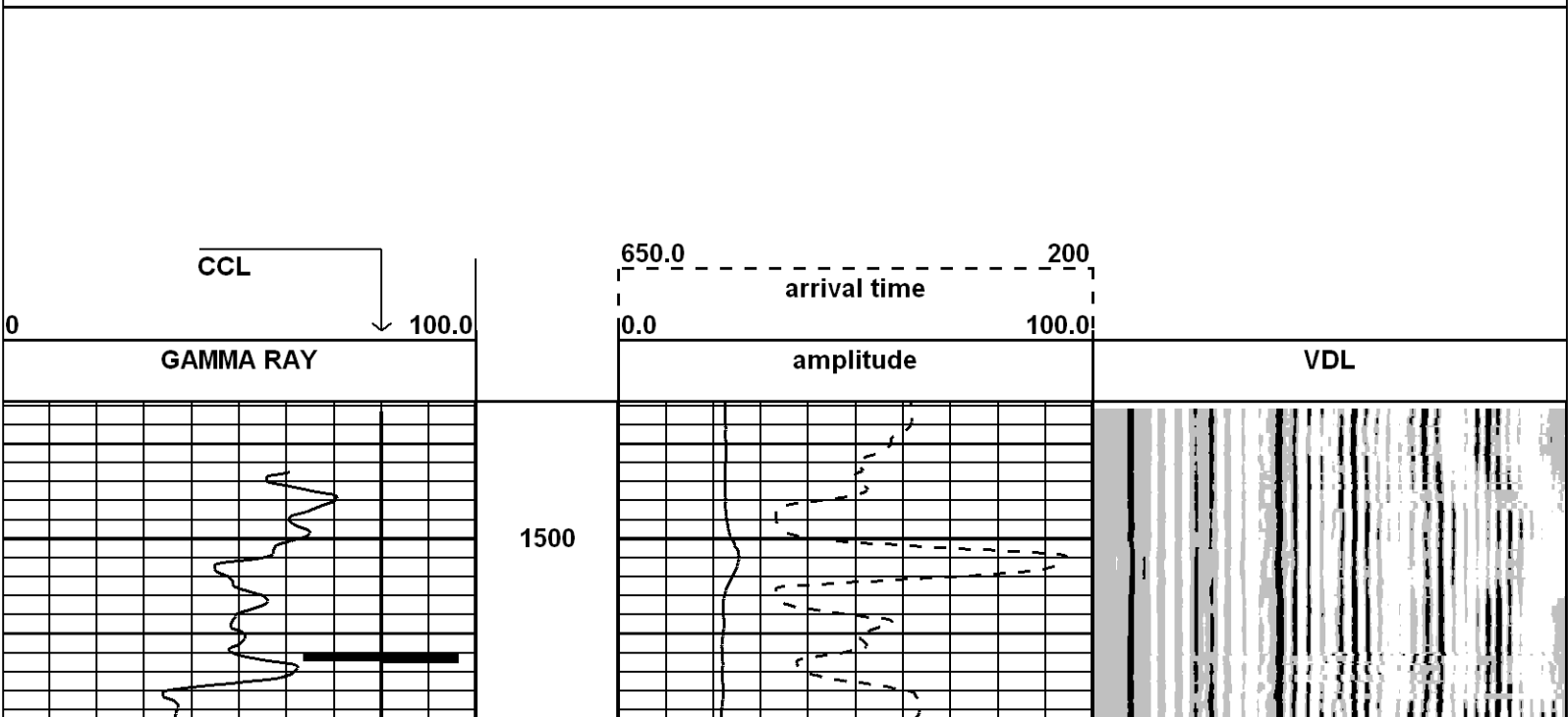
<b>Location</b> 2186 FSL - 330' FWL	<b>Other Services</b>
<b>SEC. 32 TWP. 25S RGE. 5 E</b> <b>BUTLER COUNTY</b>	
<b>Permanent Datum</b> GROUND LEVEL <b>Log Measured From</b> KELLY BUSHING 7' A.G.L. <b>Drilling Measured From</b> KELLY BUSHING	<b>Elevation</b> K.B. 1389 G.L. 1382

Date	07-26-13
Run Number	ONE
Depth Driller	2507
Depth Logger	2506
Bottom Logged Interval	2505
Top Log Interval	500
Open Hole Size	WATER
Type Fluid	
Density / Viscosity	
Max. Well Deviation	
Estimated Cement Top	SURFACE
Time Well Ready	
Time Logger on Bottom	
Equipment Number	103
Location	ELDORADO
Recorded By	SULLIVAN
Witnessed By	J. HAWKINS
Borehole Record	
Run Number	Bit From To Size Weight
Tubing Record	
Casing Record	SIZE WEIGHT FROM TO
Surface String	8 5/8 0 200
Prot. String	
Production String	5 1/2 15.5 0 2537
Liner	

START: 2496.50ft  
 STOP: 1476.00ft  
 RES: 0.25ft  
 SCALE: 5"/100'

### SONIC BOND

RUN: SONIC BOND  
 DIR: UP  
 DATE: 07/26/13  
 TIME: 17:21:53



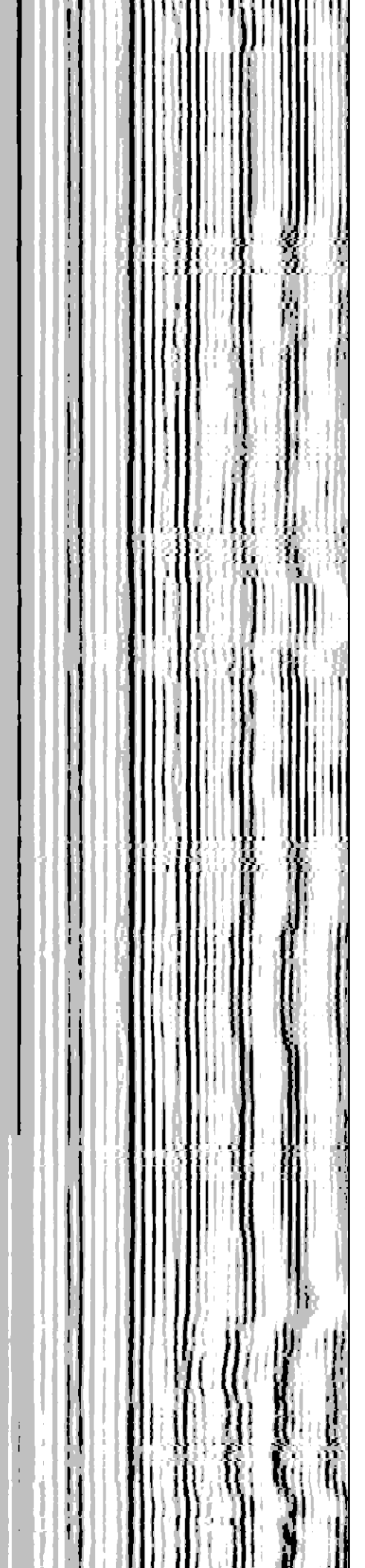
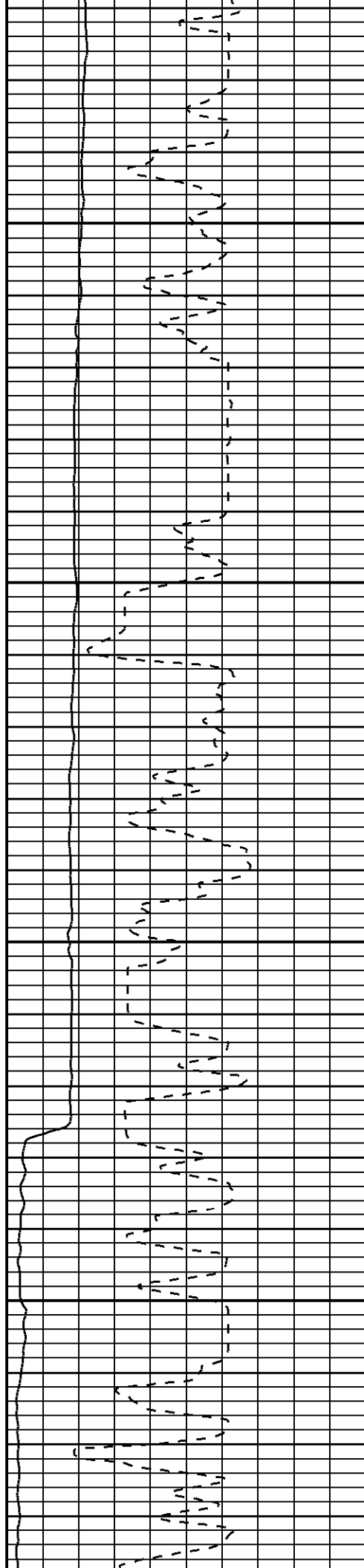


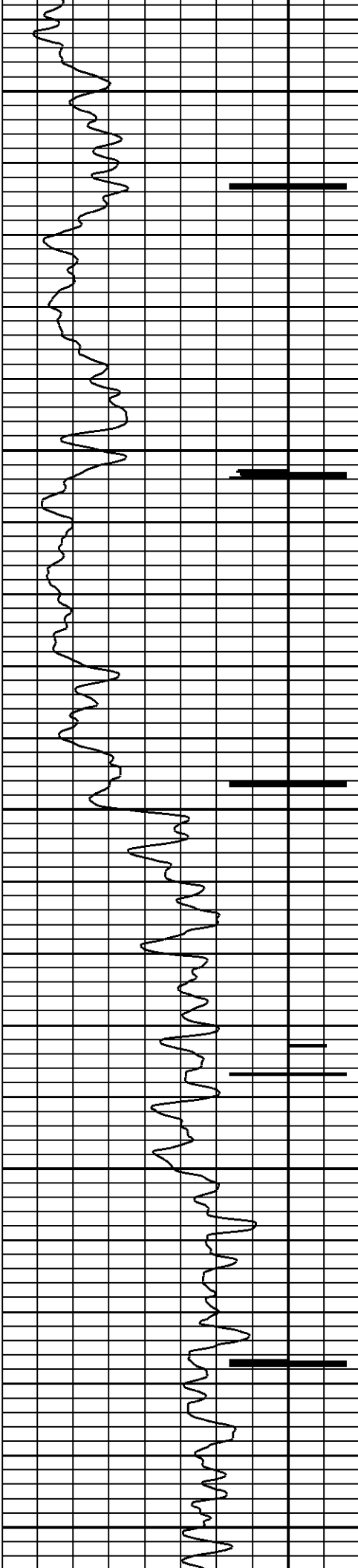
1550

1600

1650

1700





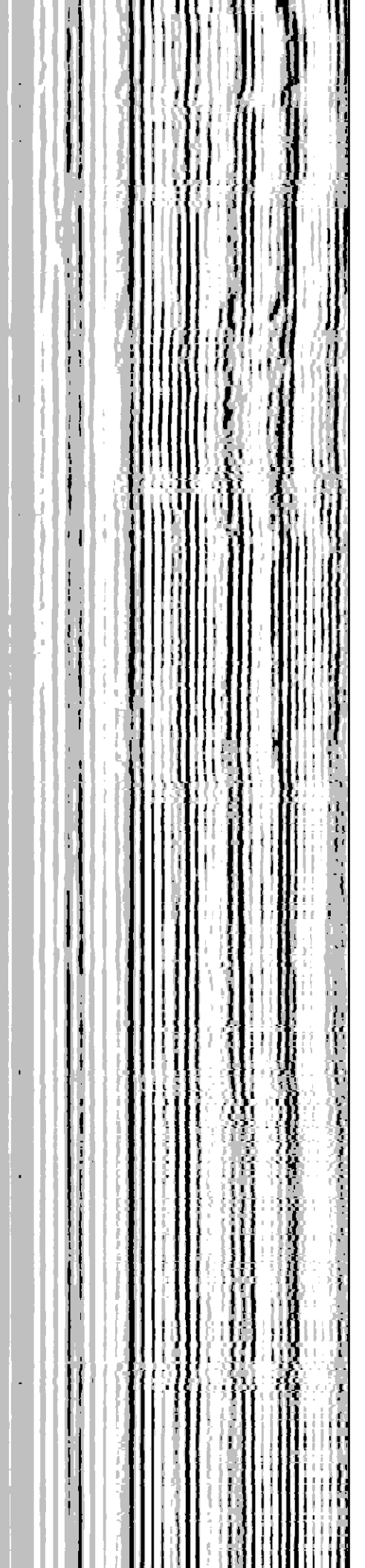
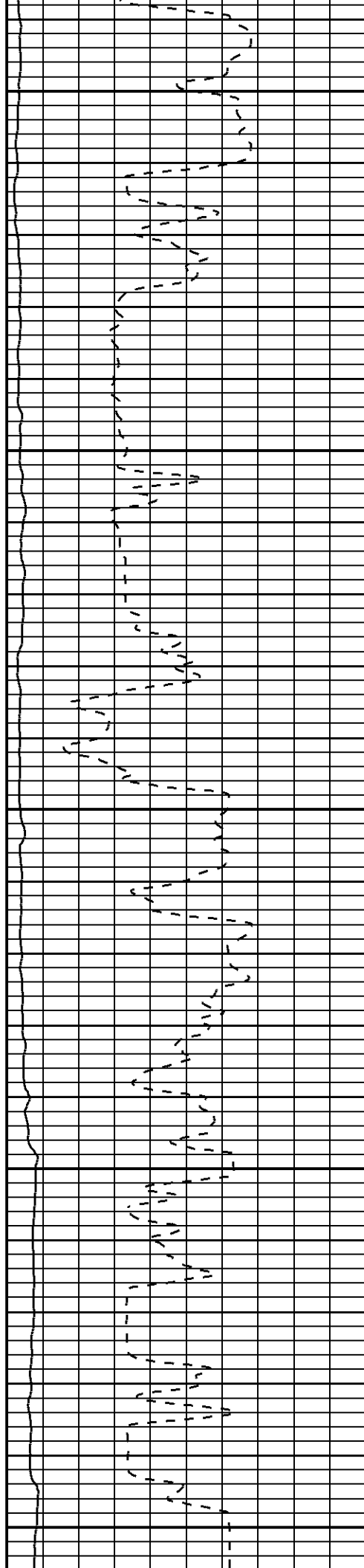
1750

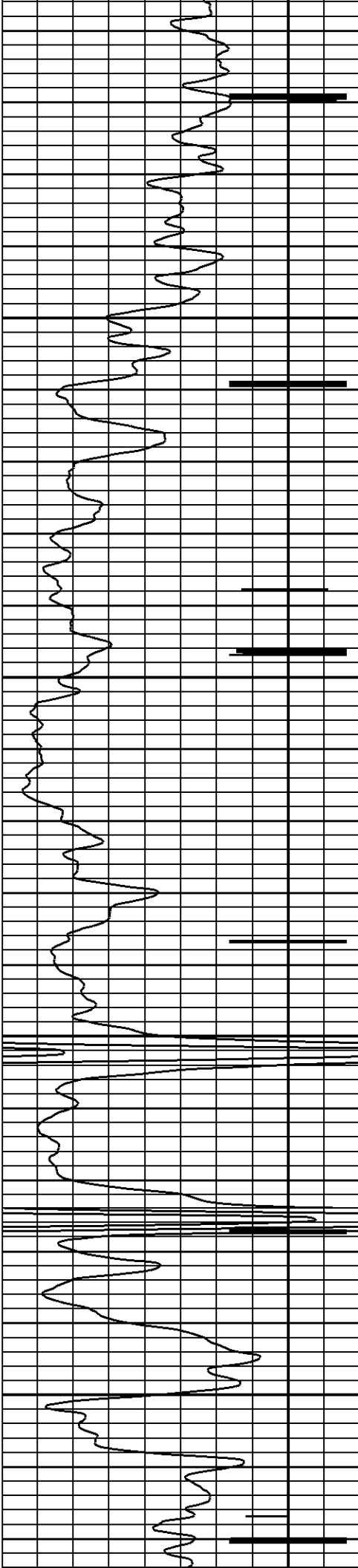
1800

1850

1900

1950



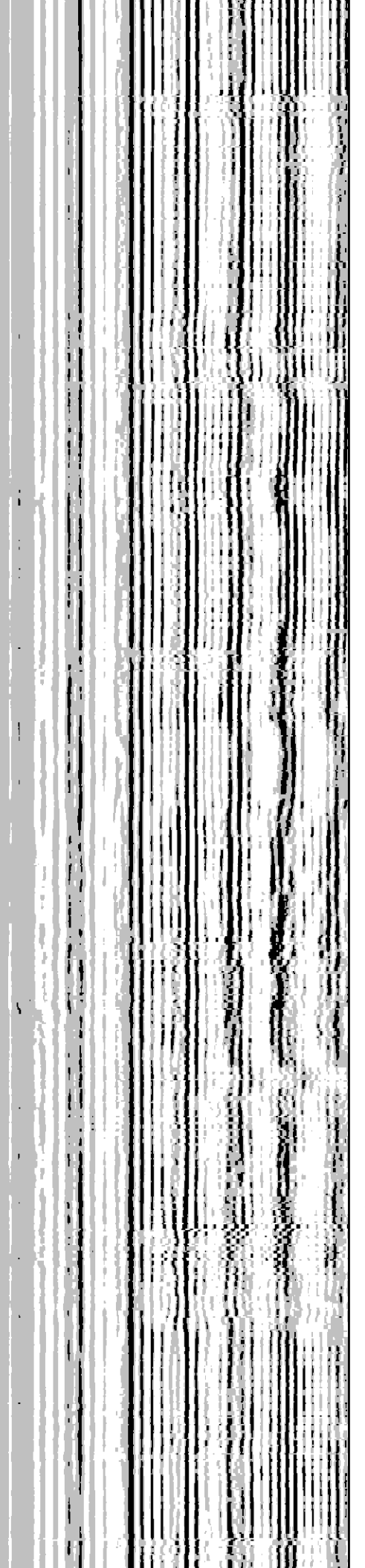
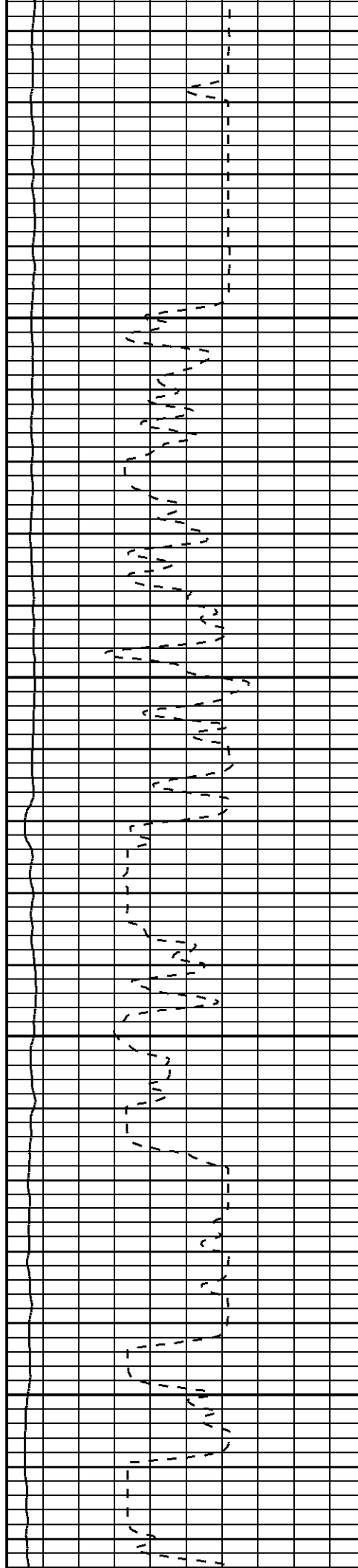


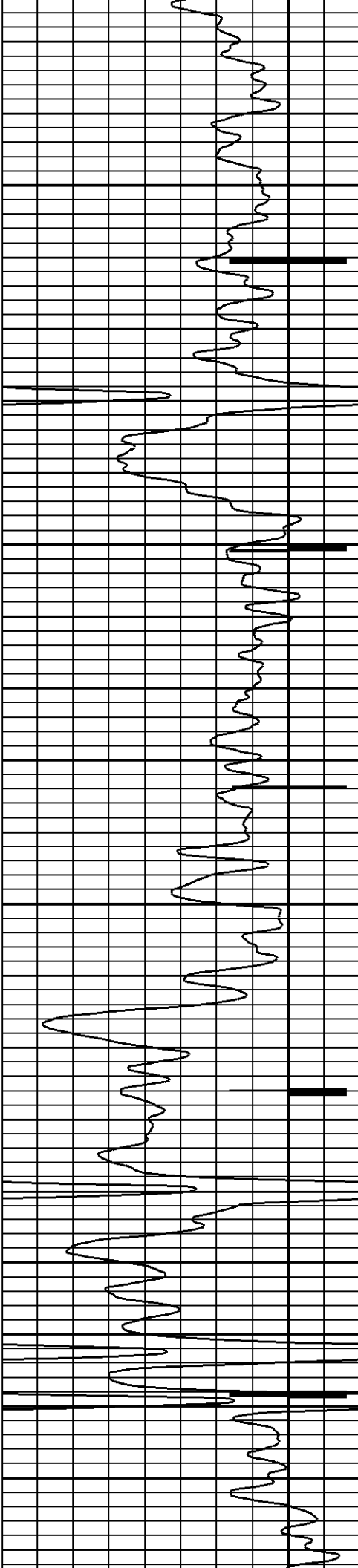
2000

2050

2100

2150



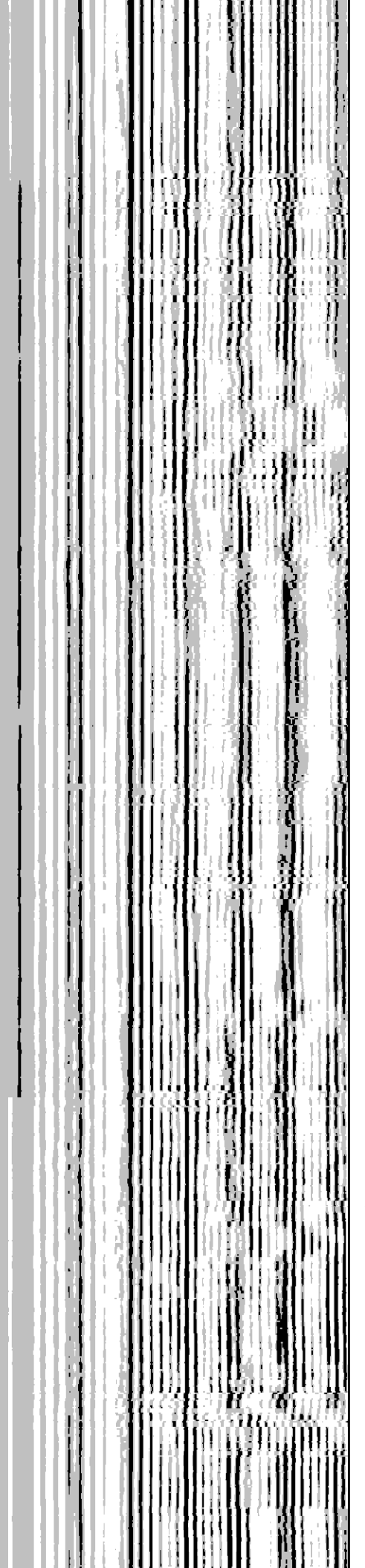
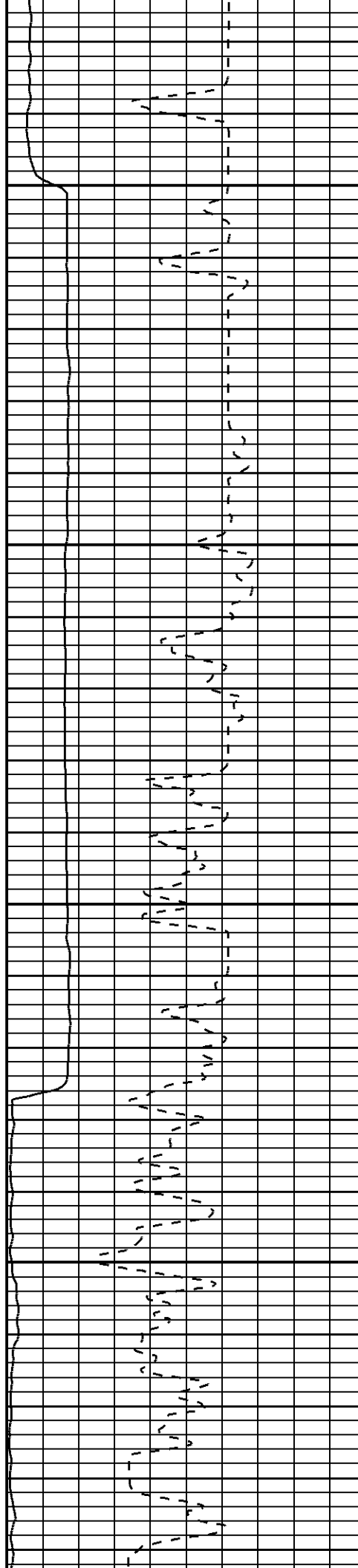


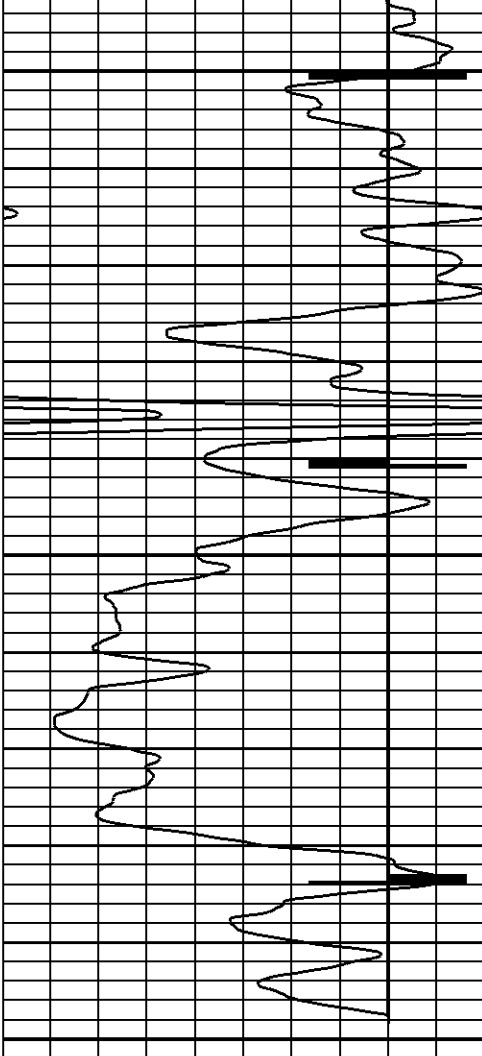
2200

2250

2300

2350

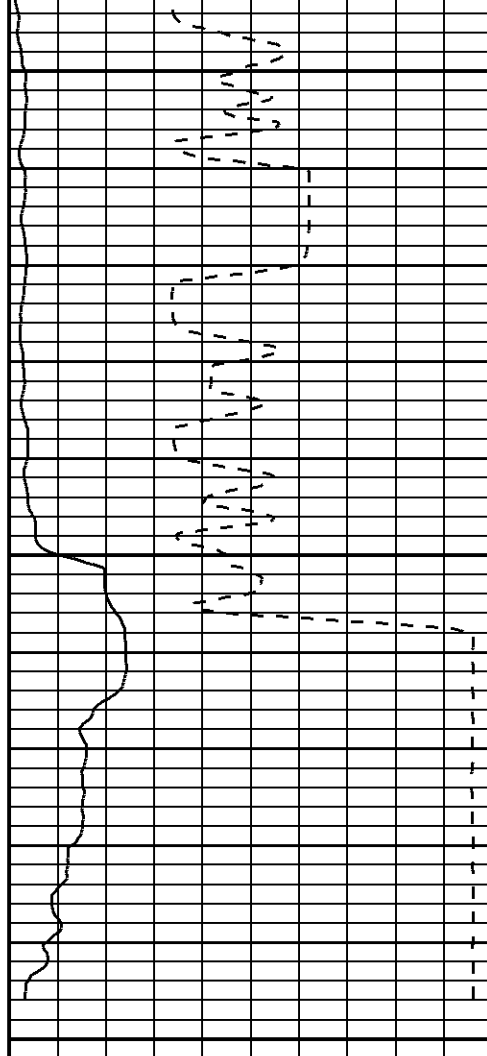




2400

2450

2500



0.0

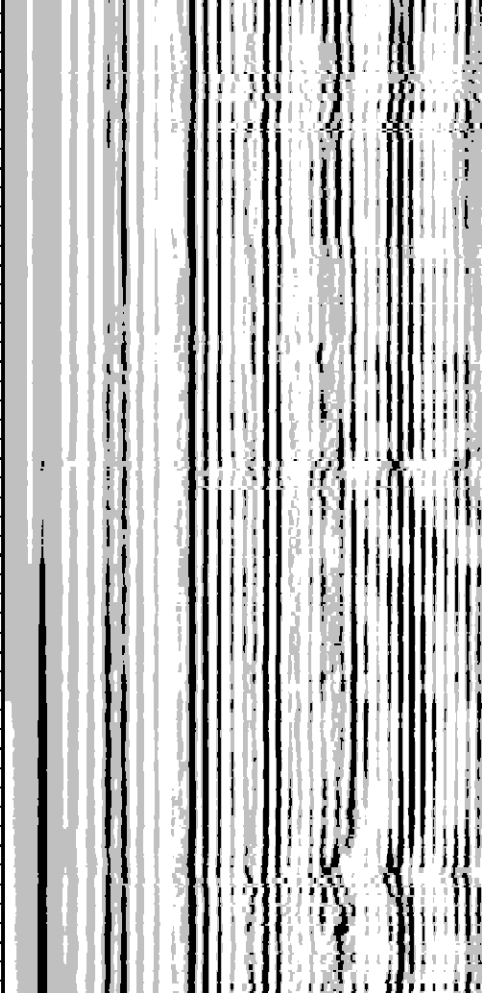
100.0

165.0

200.0

amplitude

arrival time



VDL

0 100.0

GAMMA RAY  
CCL

RUN: SONIC BOND

DIR: UP

DATE: 07/26/13

TIME: 17:21:53

SONIC BOND

START: 2496.50ft

STOP: 1476.00ft

RES: 0.25ft

SCALE: 5"/100'

RUN: Run #1

DIR: UP

DATE: 07/26/13

TIME: 15:03:29

Run #1

START: 2496.50ft

STOP: 448.50ft

RES: 0.25ft

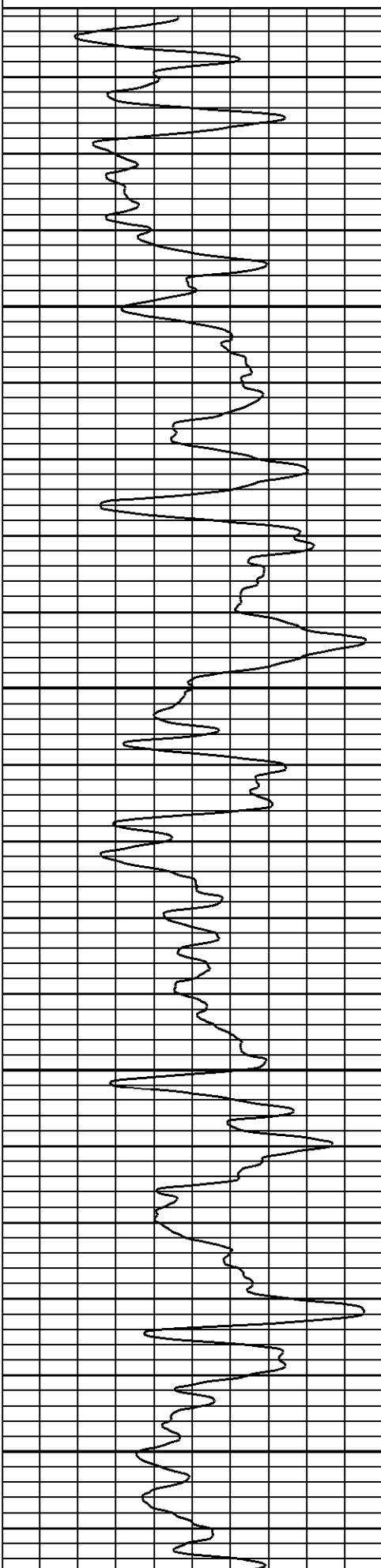
SCALE: 5"/100'

NEUTRON

0 100.0

GAMMA RAY

CCL

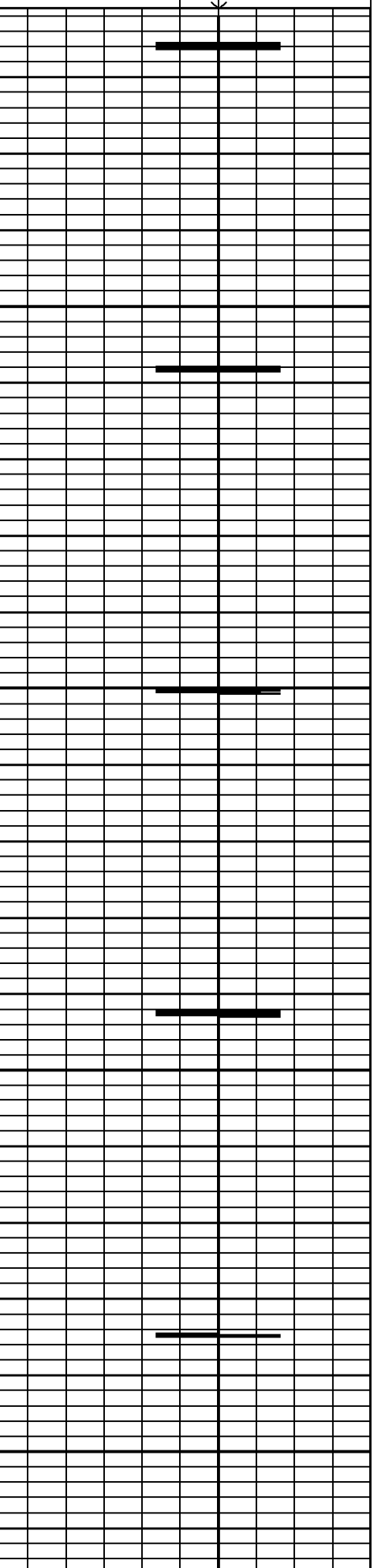
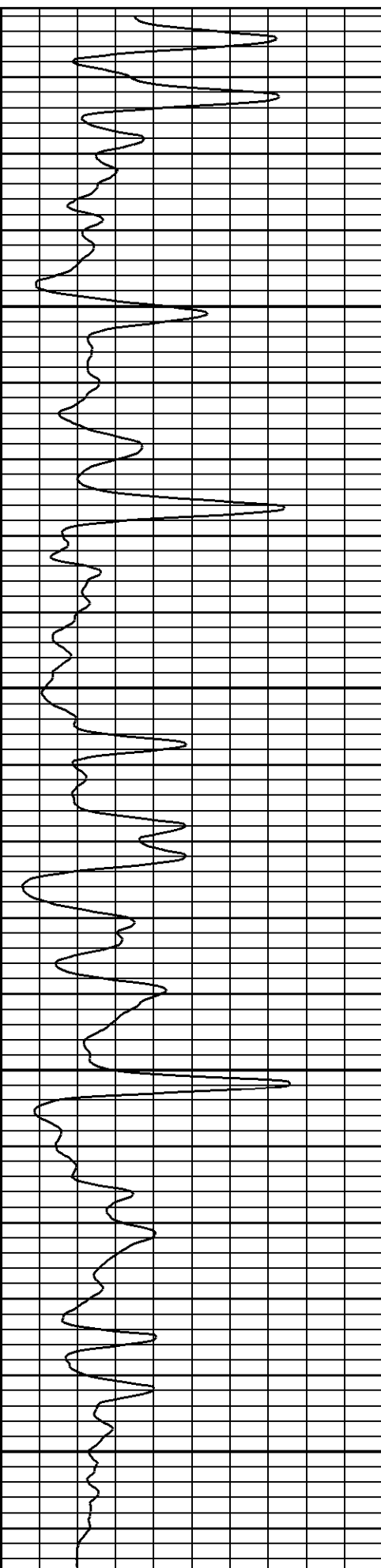


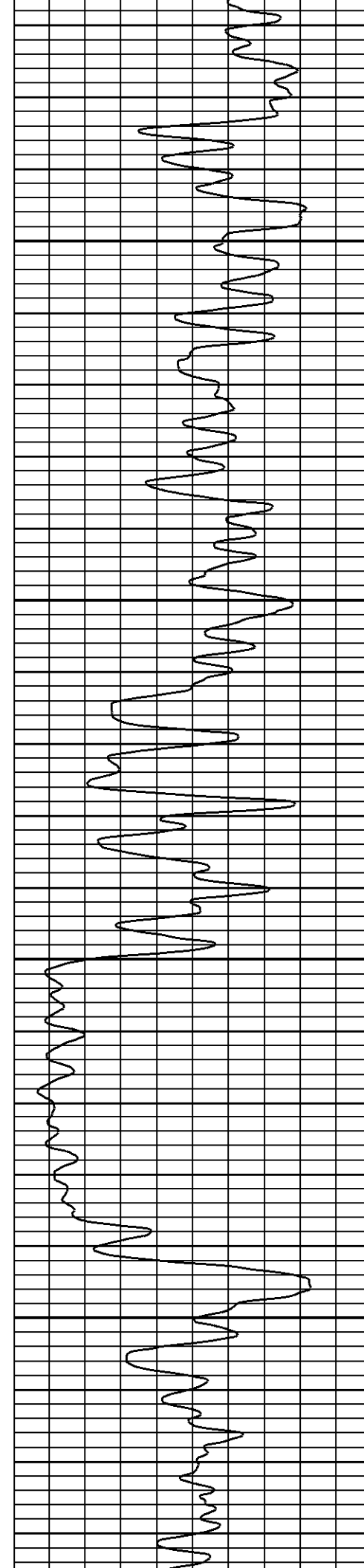
500

550

600

650



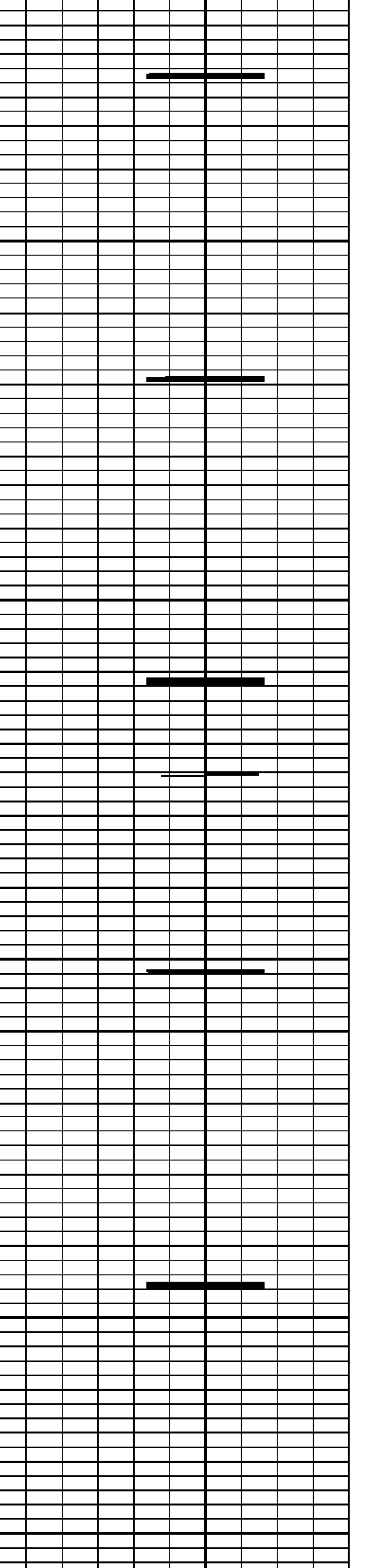
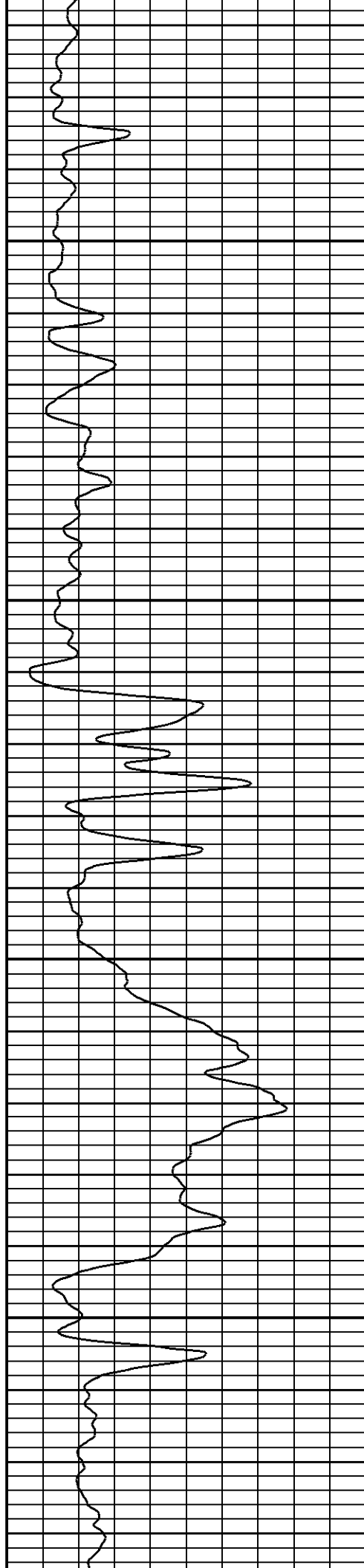


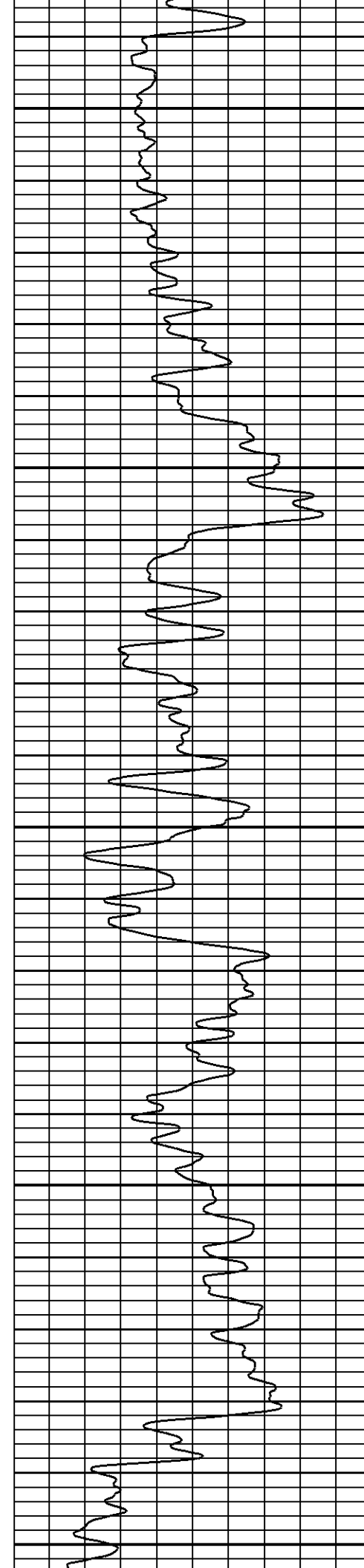
700

750

800

850





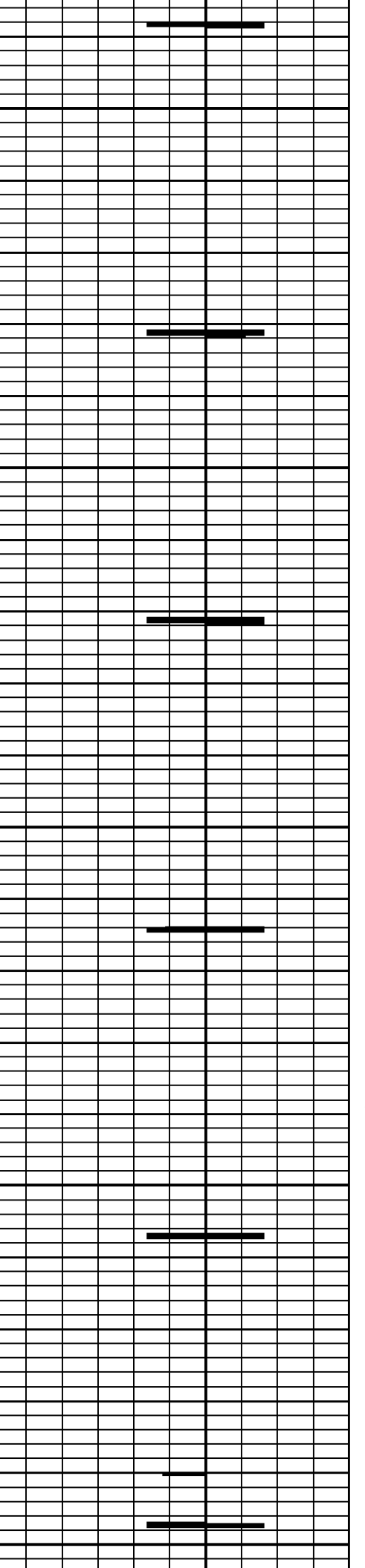
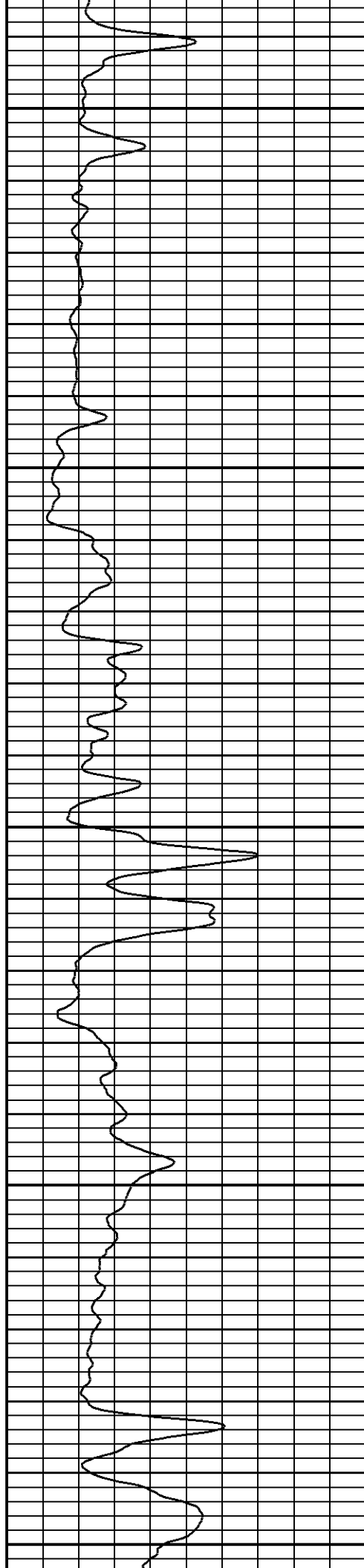
900

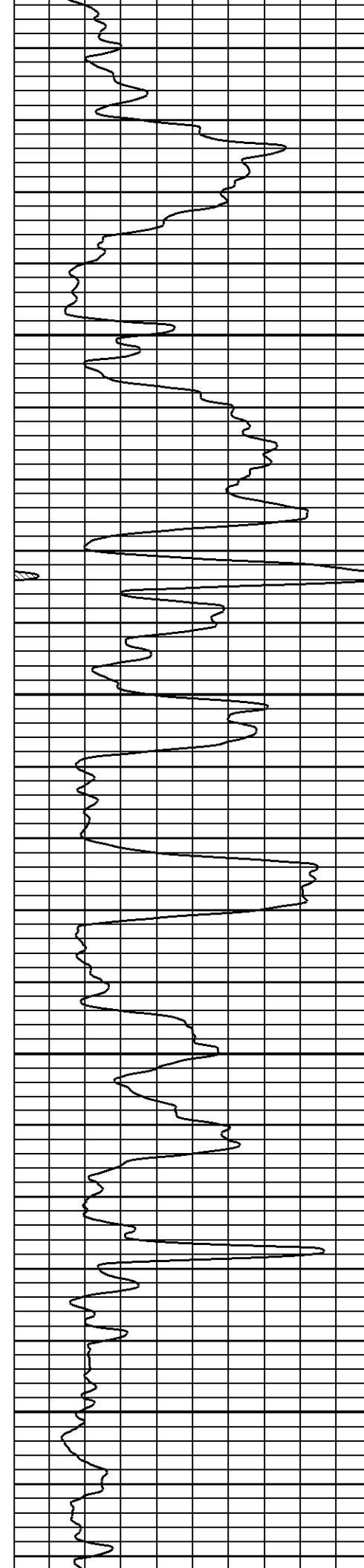
950

1000

1050

1100



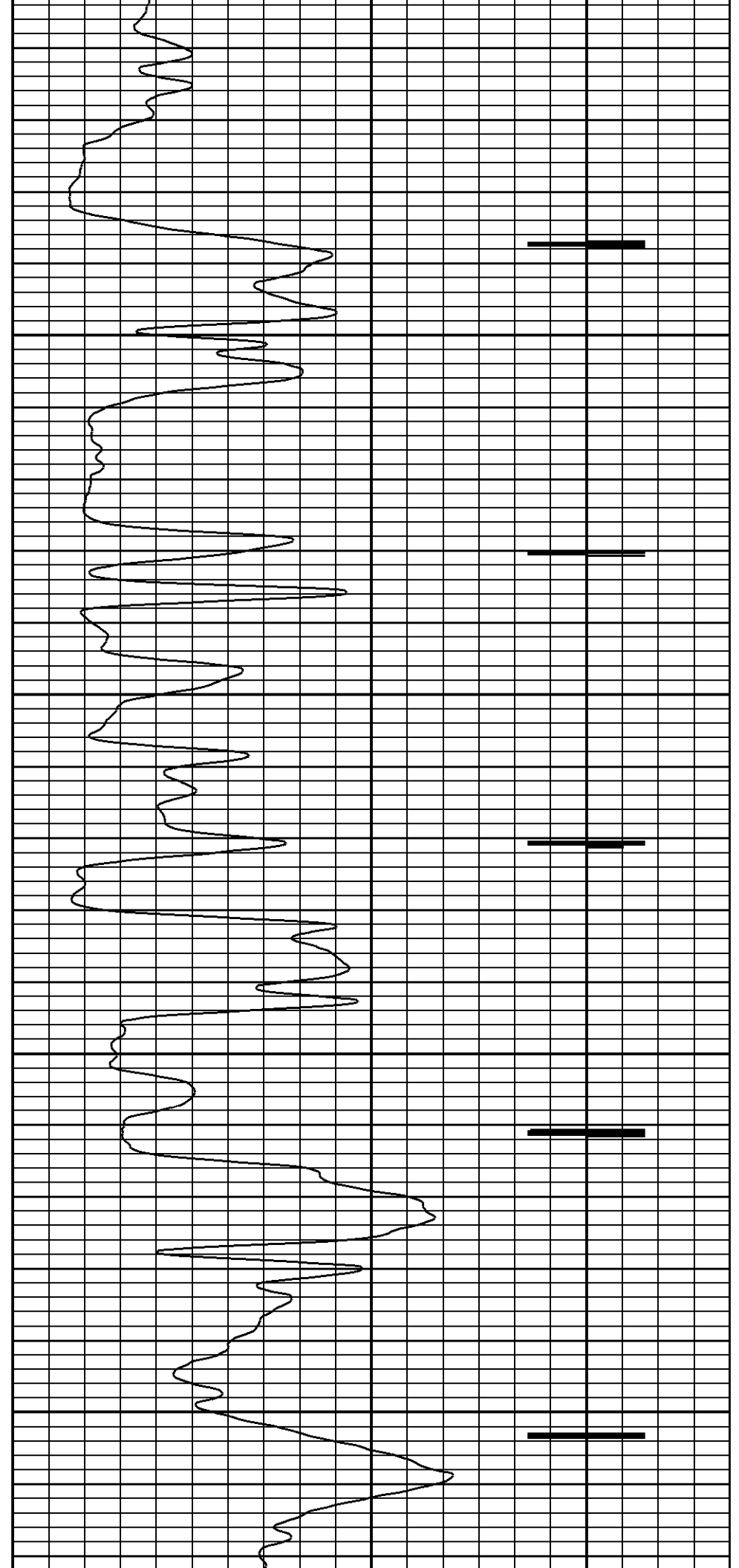


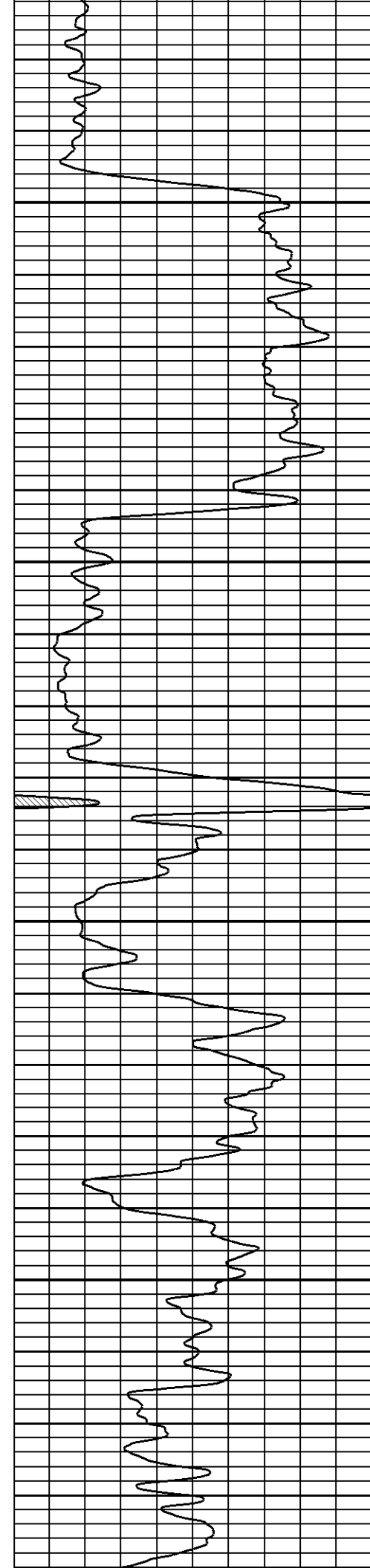
1150

1200

1250

1300



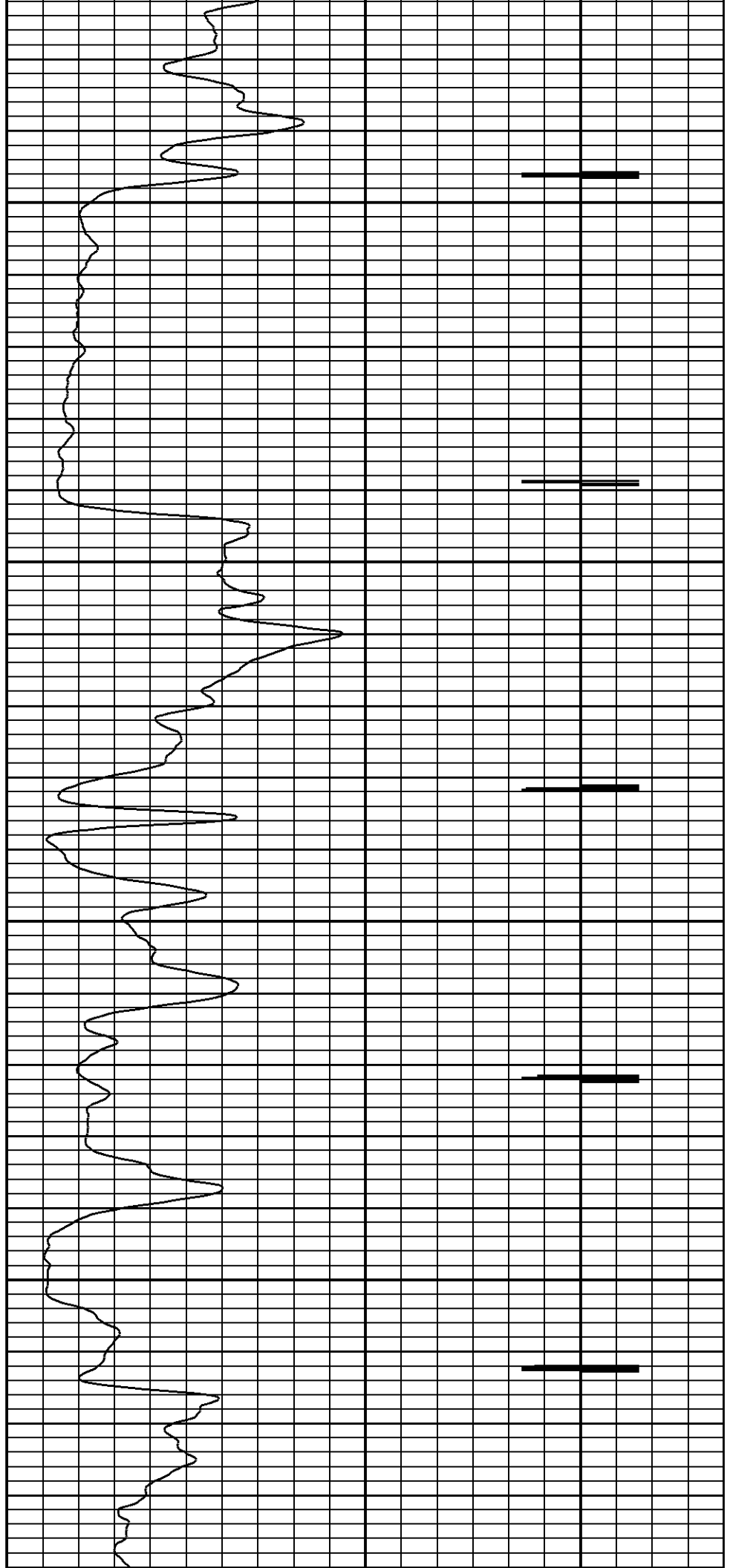


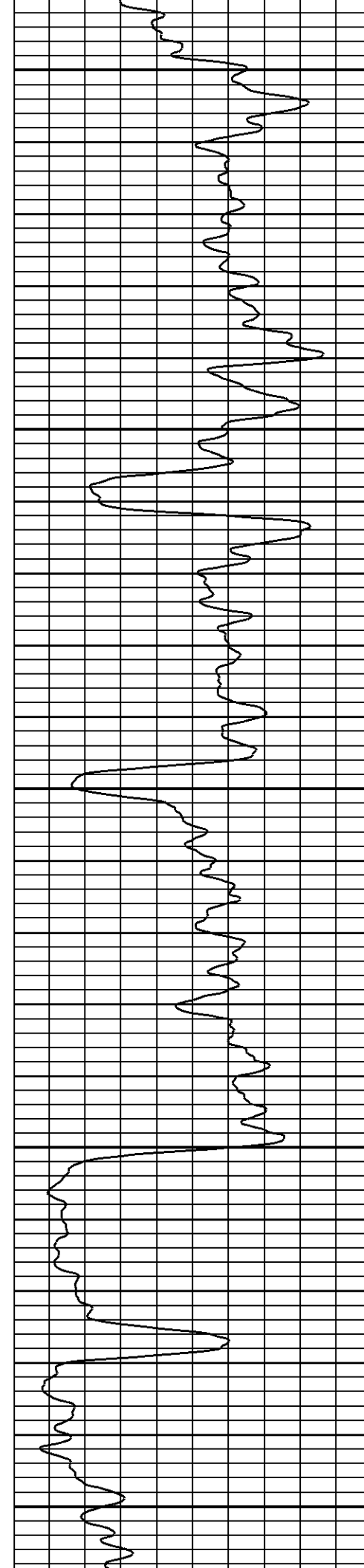
1350

1400

1450

1500





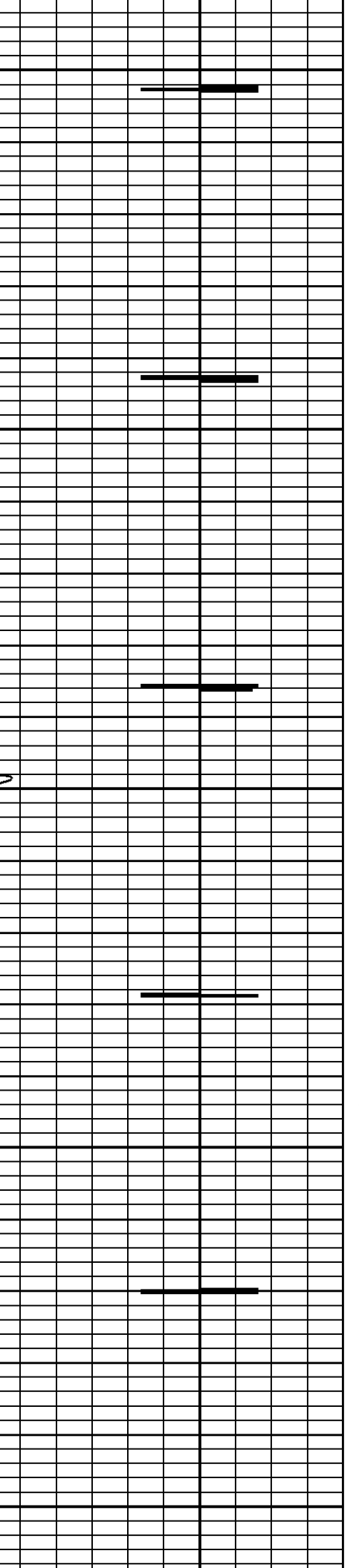
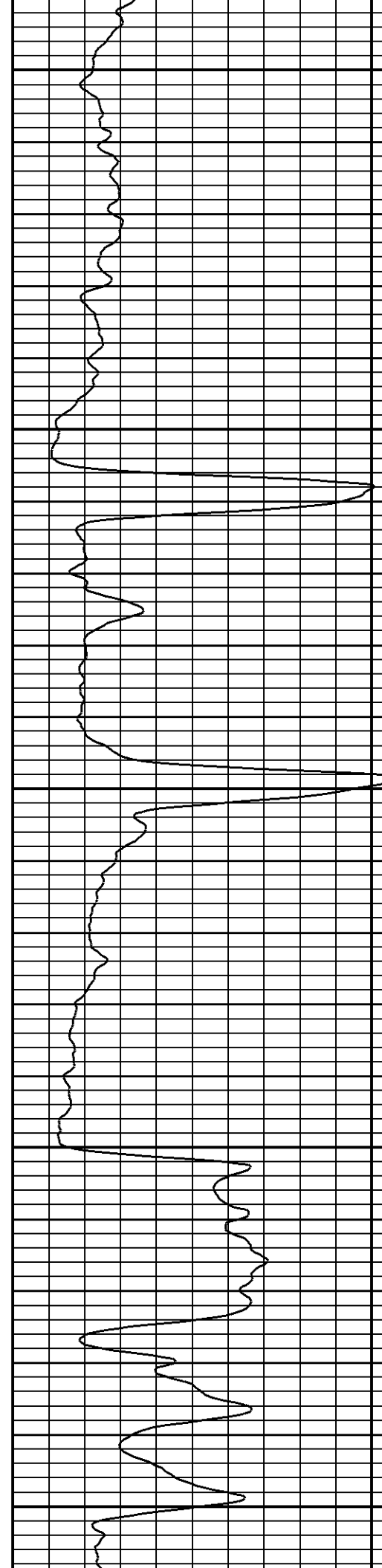
1550

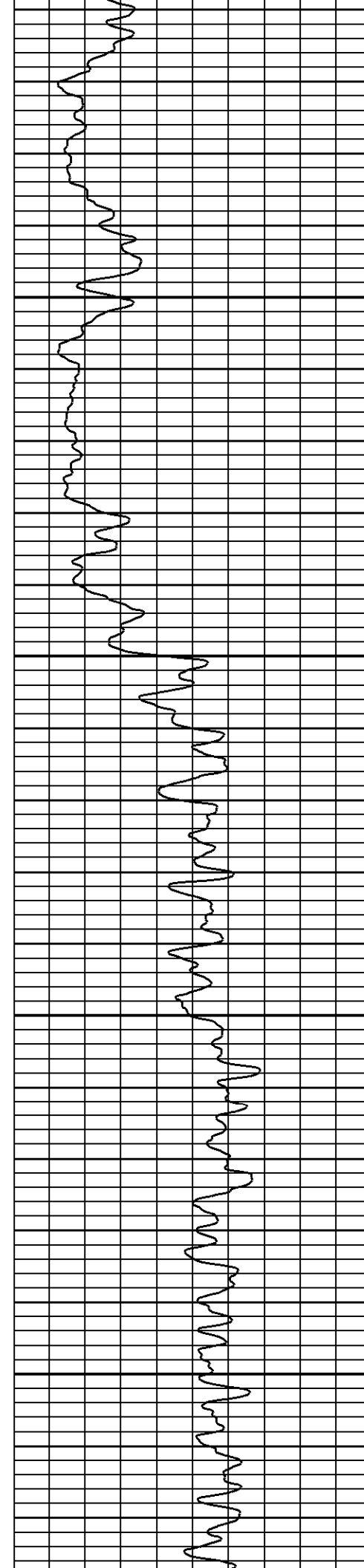
1600

1650

1700

1750



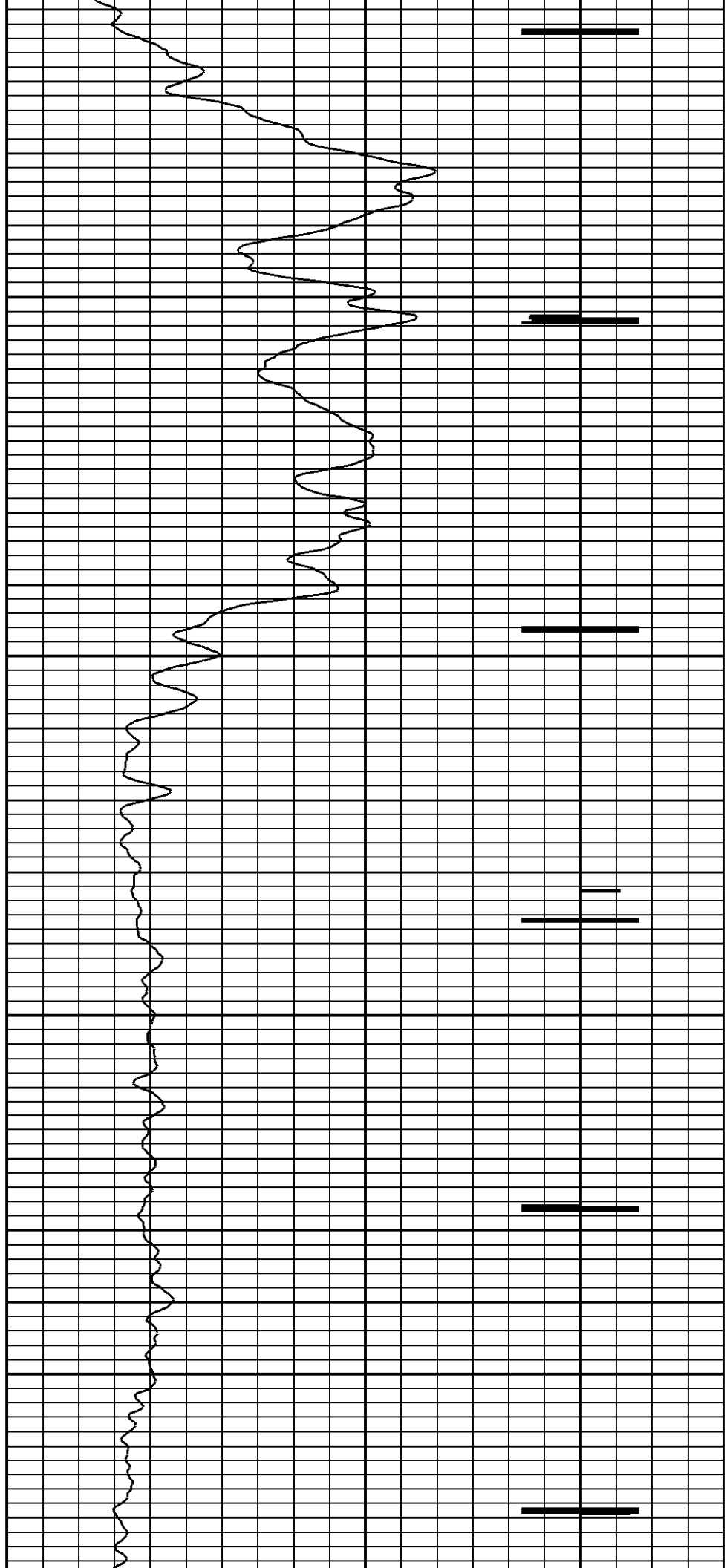


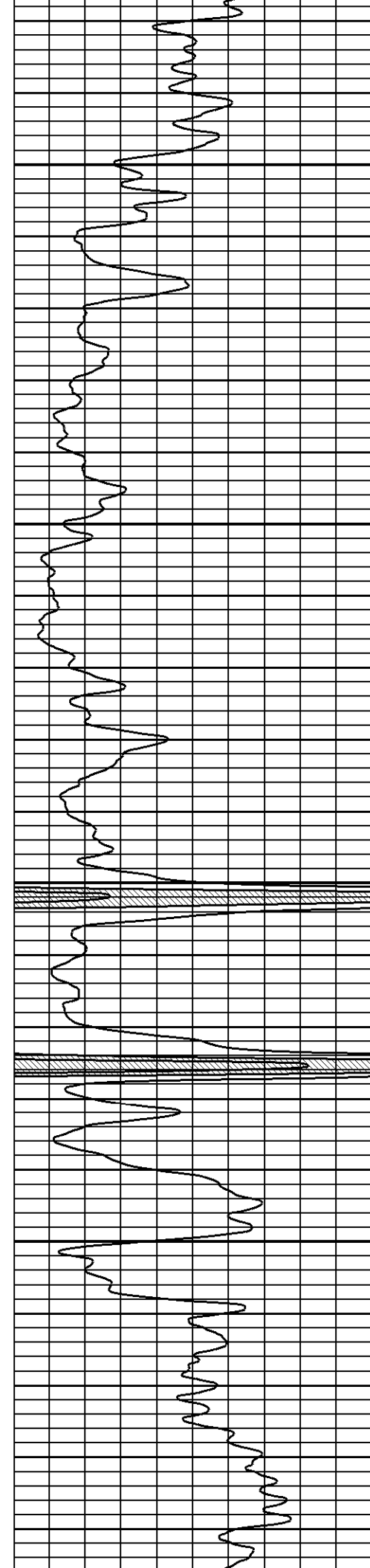
1800

1850

1900

1950



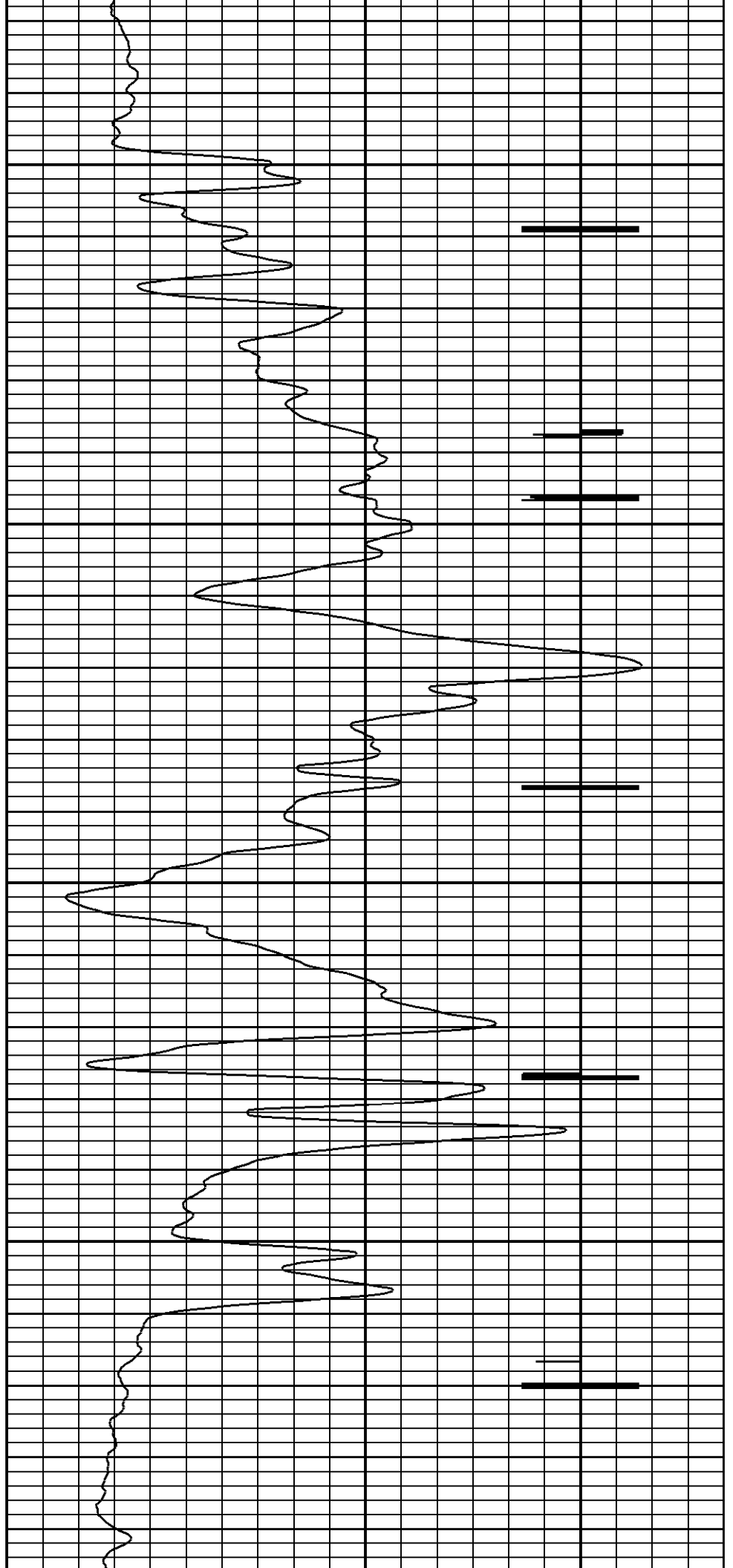


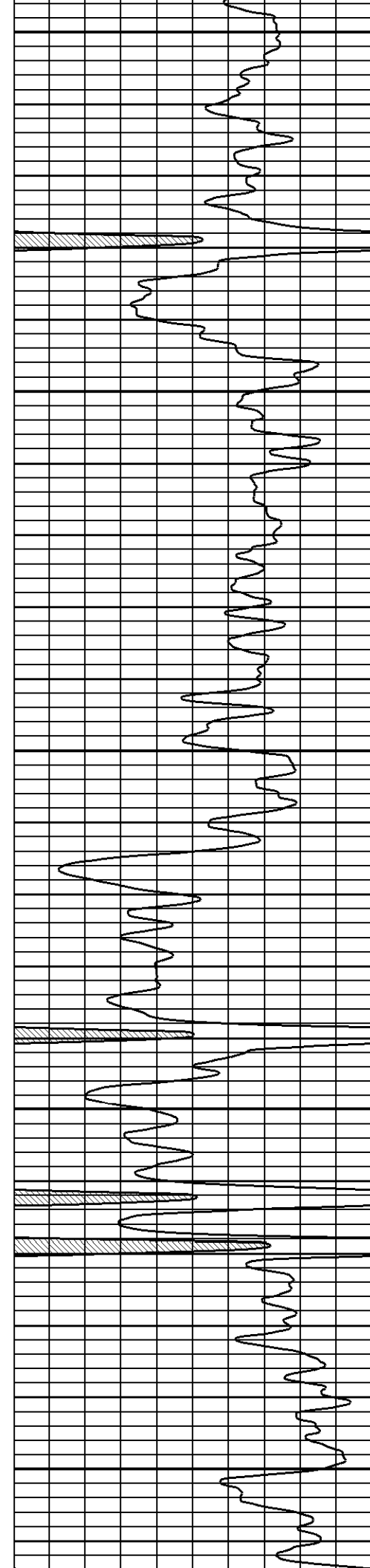
2000

2050

2100

2150





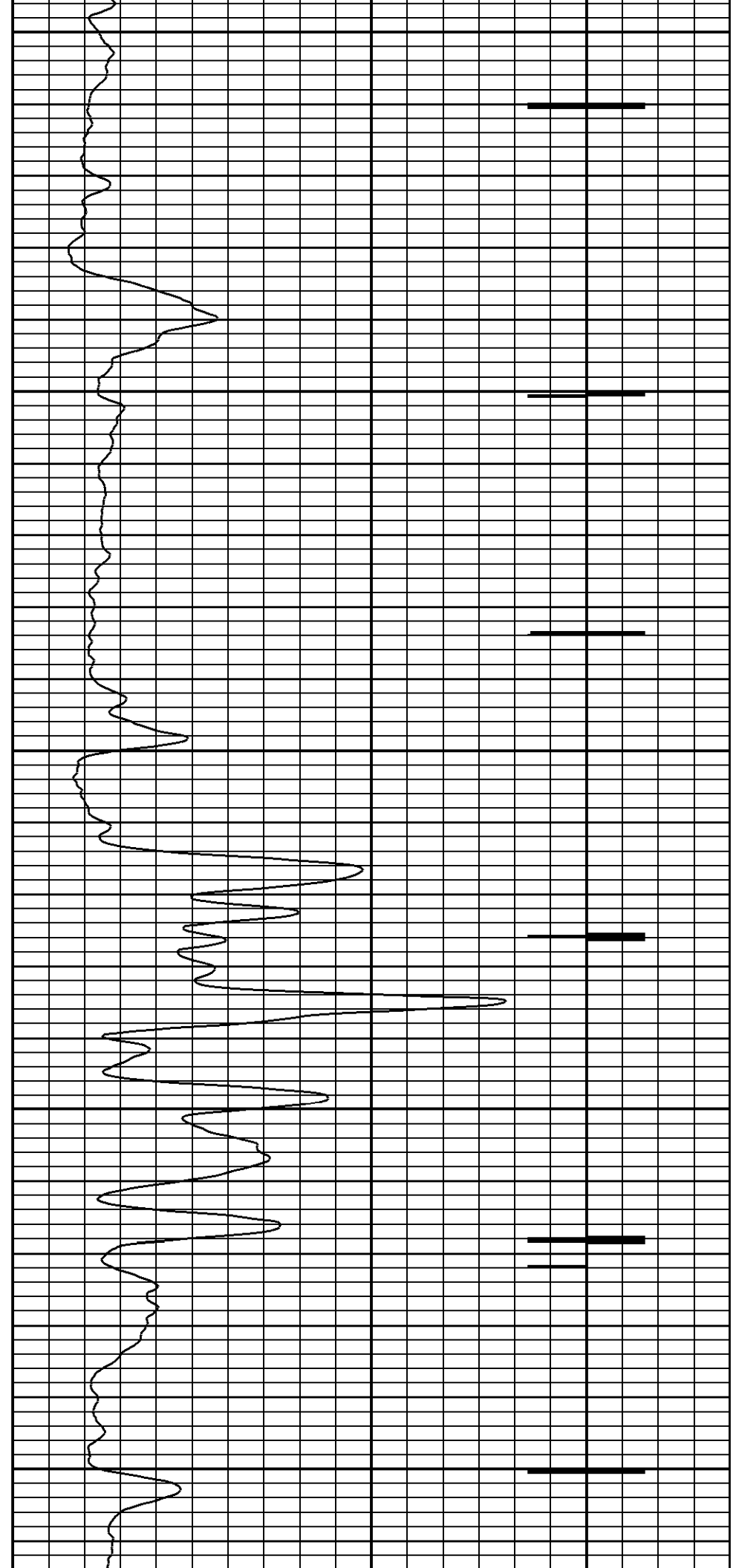
2200

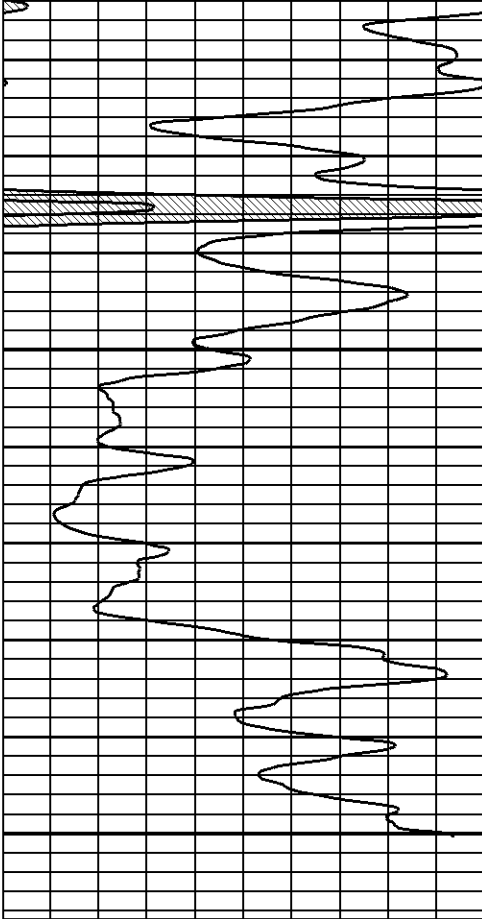
2250

2300

2350

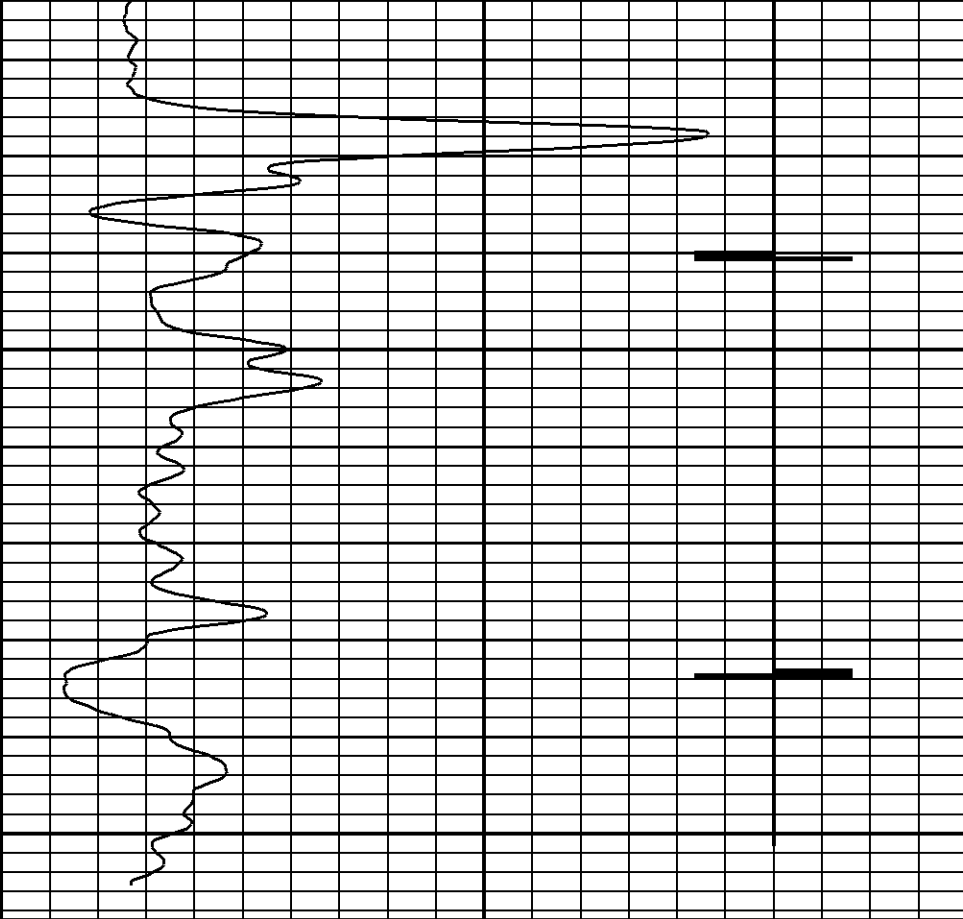
2400





2450

2500



0 100.0

GAMMA RAY

CCL

15 425

NEUTRON

RUN: Run #1  
 DIR: UP  
 DATE: 07/26/13  
 TIME: 15:03:29

Run #1

START: 2496.50ft  
 STOP: 448.50ft  
 RES: 0.25ft  
 SCALE: 5"/100'

**DYNA-LOG INC.**

Company HAWKINS OIL LLC.  
 Well ALLEN MEMORIAL HOSPITAL # 2 A  
 Field ELDORADO  
 Country U.S.A. State/Prv KANSAS