



MIDWEST SURVEYS
 LOGGING - PERFORATING - CONSULTING SERVICES
 P.O. Box 68, Osawatomie, KS 66064
 913 / 755 - 2128

GAMMA RAY / NEUTRON / CCL

File No. _____

Company **JTC Oil, Inc.**

Well **Wilson "A" No. P-17**

Field **Paola / Rantoul**

County **Miami** State **Kansas**

Location **1485' FNL & 1155' FEL**
NW-NW-SE-NE

Other Services
 Perforate

Sec. 4 Twp. 18s Rge. 22e
 Permanent Datum GL Elevation NA
 Log Measured From GL
 Drilling Measured From GL NA

Date 03-11-2014

Run Number One

Depth Driller 620.0

Depth Logger 622.5

Bottom Logged Interval 601.5

Top Log Interval 20.0

Fluid Level Full

Type Fluid Water

Density / Viscosity NA

Salinity - PPM Cl NA

Max Recorded Temp NA

Estimated Cement Top 0.0

Equipment No. 102 Location Osawatimie

Recorded By Gary Windisch

Witnessed By Tom Cain

WITNESSED BY _____

WITNESSED BY _____

WITNESSED BY _____

WITNESSED BY _____

WITNESSED BY _____

WITNESSED BY _____

WITNESSED BY _____

BORE-HOLE RECORD				CASING RECORD			
NO.	BIT	FROM	TO	SIZE	WGT.	FROM	TO
One	9.875"	0.0	20.0	7.00"	17.0#	0.0	20.0
Two	5.875"	20.0	620.0	2.875"	6.5#	0.0	608.0

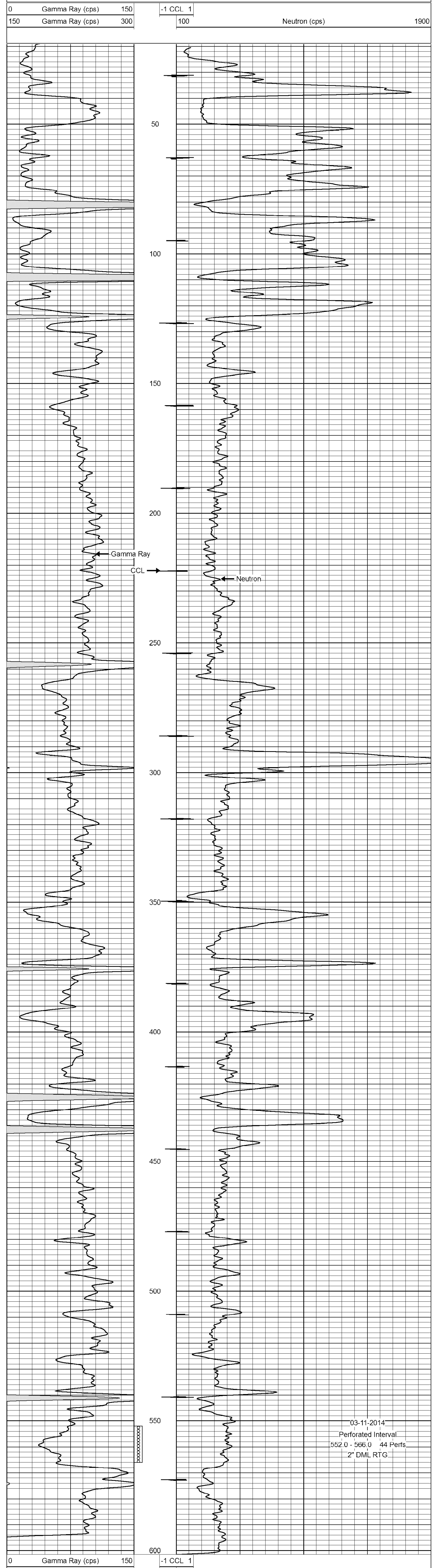
<<< Fold Here >>>

All interpretations are opinions based on inferences from electrical or other measurements and we cannot and do not guarantee the accuracy or correctness of any interpretation, and we shall not, except in the case of gross or willful negligence on our part, be liable or responsible for any loss, costs, damages, or expenses incurred or sustained by anyone resulting from any interpretation made by any of our officers, agents or employees. These interpretations are also subject to our general terms and conditions set out in our current Price Schedule.

Comments

Drilling Contractor :
 JTC Oil, Inc.

Database File: wilson17pa.db
 Dataset Pathname: pass1
 Presentation Format: gr-n-ccl
 Dataset Creation: Tue Mar 11 08:36:05 2014 by Log SCH 111116
 Charted by: Depth in Feet scaled 1:240



03-11-2014
 Perforated Interval
 552.0 - 566.0 44 Perfs.
 2" DML RTG