



Pioneer Energy Services

Sonic Cement  
Bond Log

15-009-25,948-00-00

Company John Roy Evans Oil Company, LLC  
Well Demel No. 3  
Field Kraft-Prusa  
County Barton State Kansas

Location

910' FNL & 1,815' FEL

Other Services  
Mast Trailer

Sec: 6 Twp: 17 S Rge: 11 W

Permanent Datum Ground Level Elevation 1876  
Log Measured From Kelly Bushing 7 Ft. Above Perm. Datum  
Drilling Measured From Kelly Bushing

Elevation  
K.B. 1883  
D.F. 1876  
G.L. 1876

Run Number	One	
Date Survey	03-11-2014	
Date Cementing	03-07-2014	
Type Cementing Operation	Primary	
Depth Driller	3400	
Depth Logger	3379	
Logged Interval	3378 to 1700	to
Casing Driller	5.5" @ T.D.	@
Float Collar -- D.V. Tool	////	////
Squeeze Depth	////	
Amount & Type Cement	////	
Amount & Type Admix	////	
Type Fluid In Hole	Water	
Fluid Level	Full	
Salinity PPM CL	////	
Weight lb/gal -- Vis.	////	////
Approx. Logged Cement Top	1929	
Calculated Cement Top	////	
Max. Hole Temperature	112	
Tool No.	RBT 5-5	
Spacing Recorded	3-5	
Equipment -- Location	4 Hays	
Recorded By	Stan Linenberger	
Witnessed By	Gary Kirmer	

<<< Fold Here >>>

All interpretations are opinions based on inferences from electrical or other measurements and we cannot and do not guarantee the accuracy or correctness of any interpretation, and we shall not, except in the case of gross or willful negligence on our part, be liable or responsible for any loss, costs, damages, or expenses incurred or sustained by anyone resulting from any interpretation made by any of our officers, agents or employees. These interpretations are also subject to our general terms and conditions set out in our current Price Schedule.

Comments

Thank you for using Pioneer Energy Services  
☐☐785.625.3858

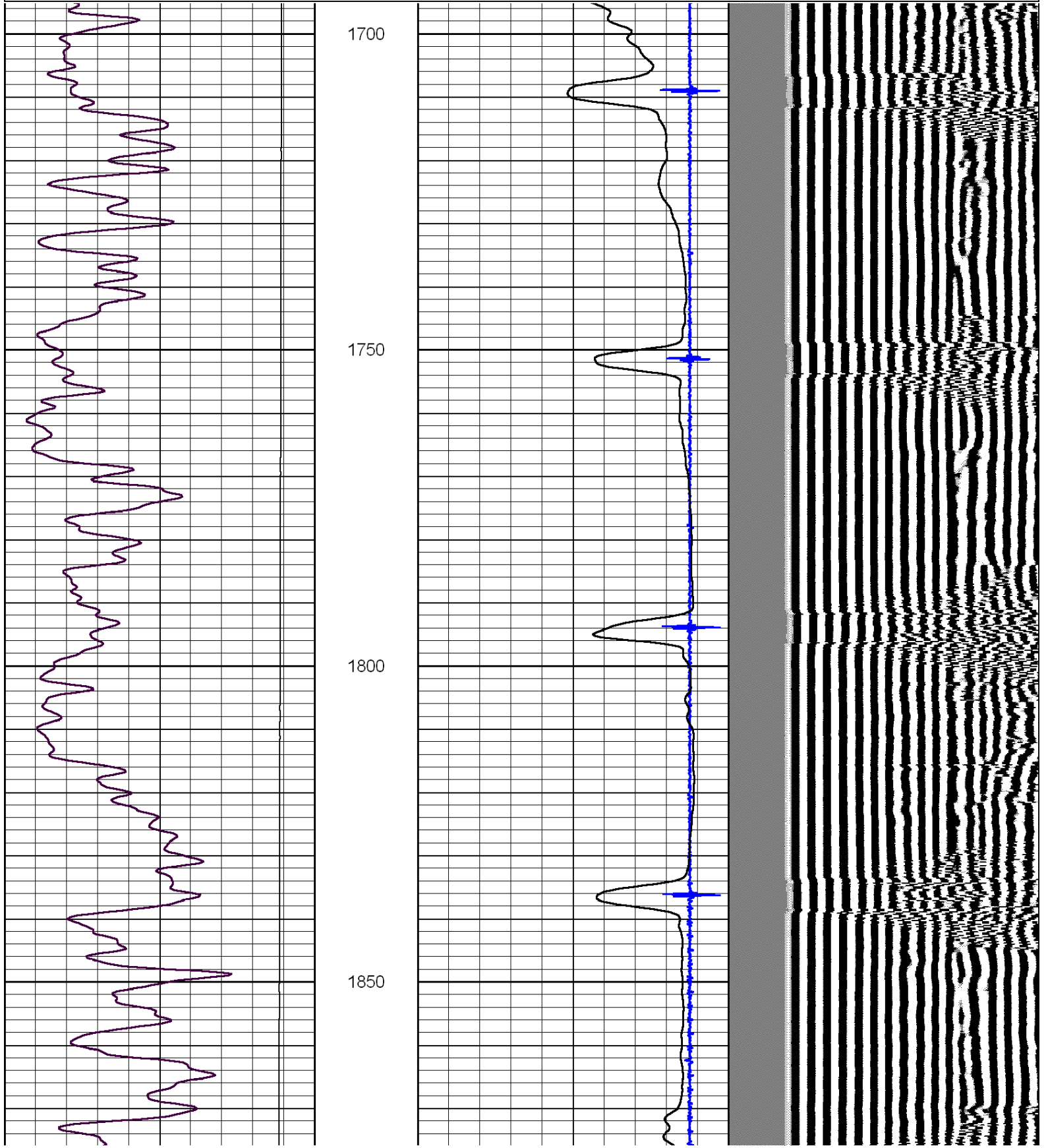
Clafin, 6 North to 170 Rd.,  
2 1/2 West, South & East Into.

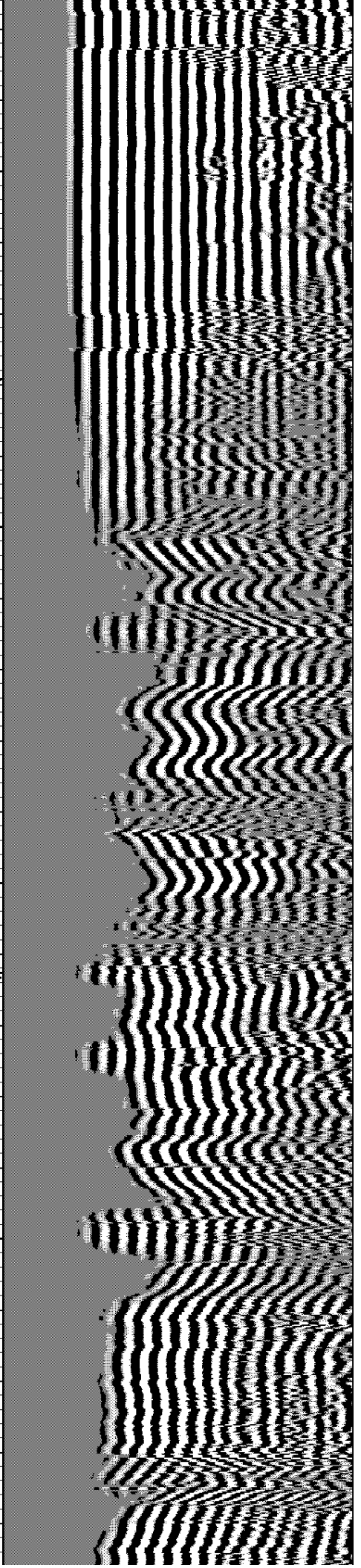
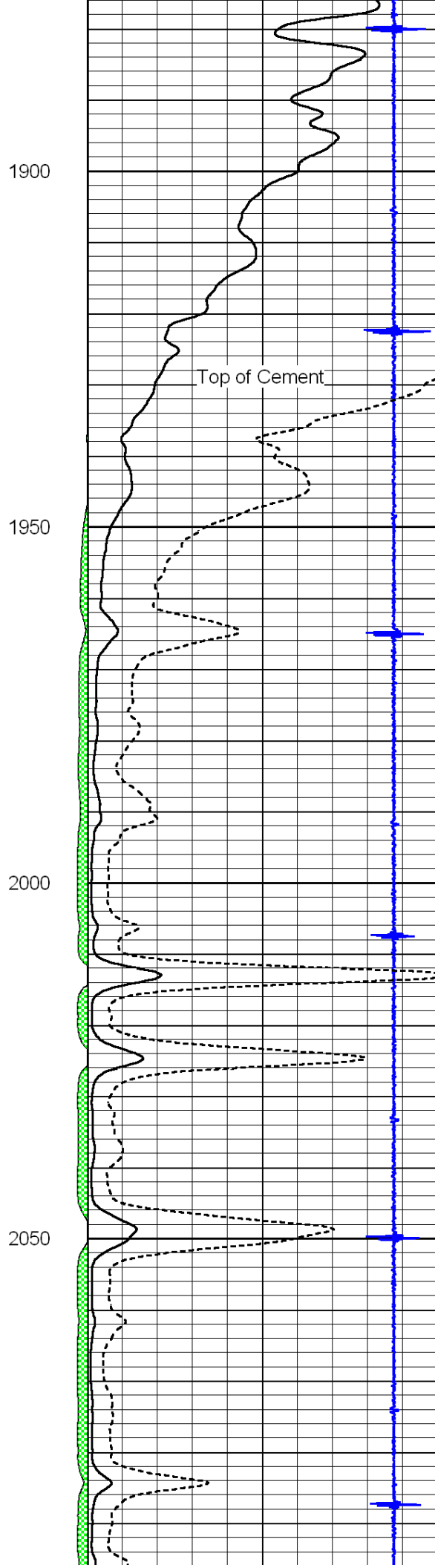
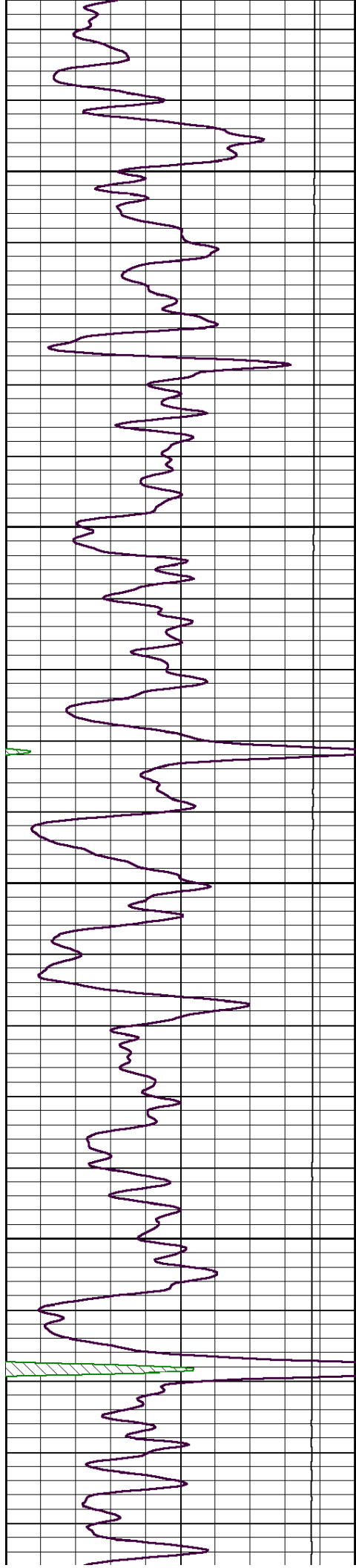


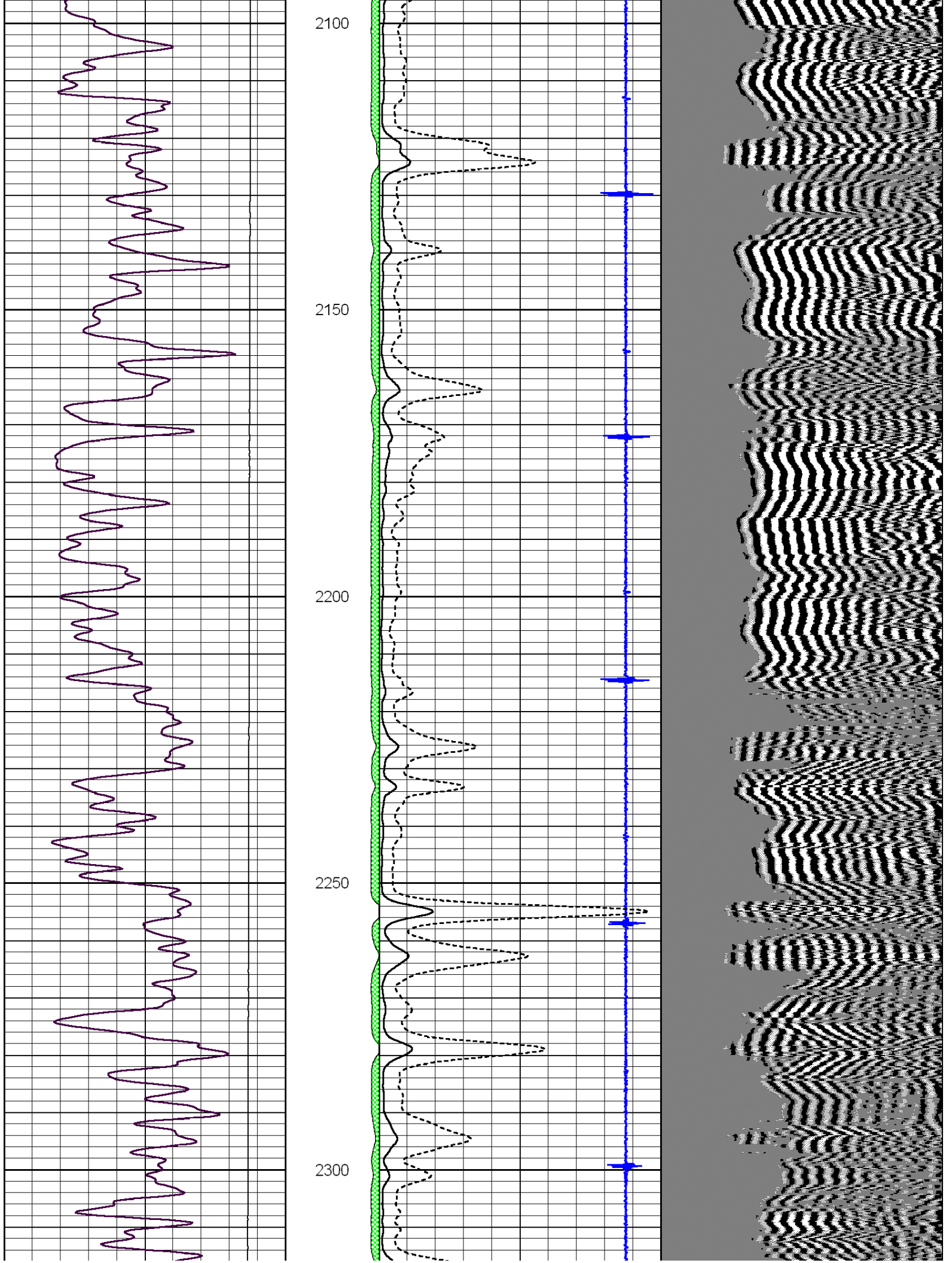
Main Pass

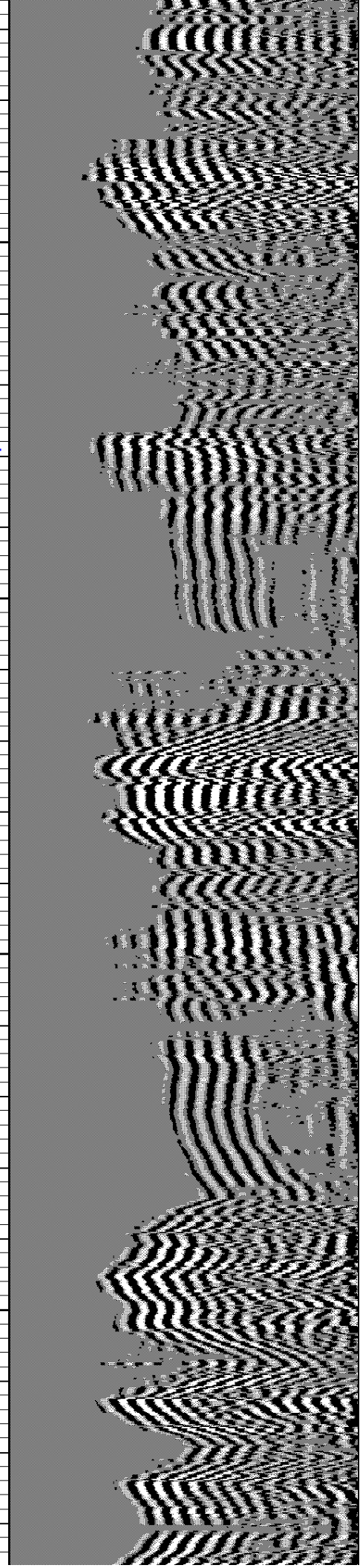
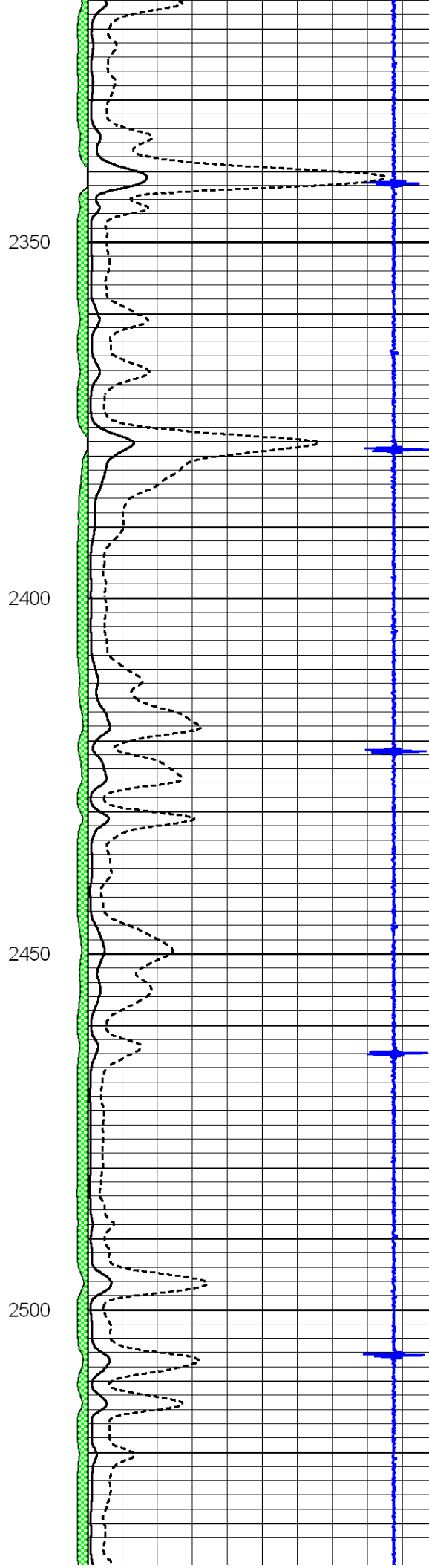
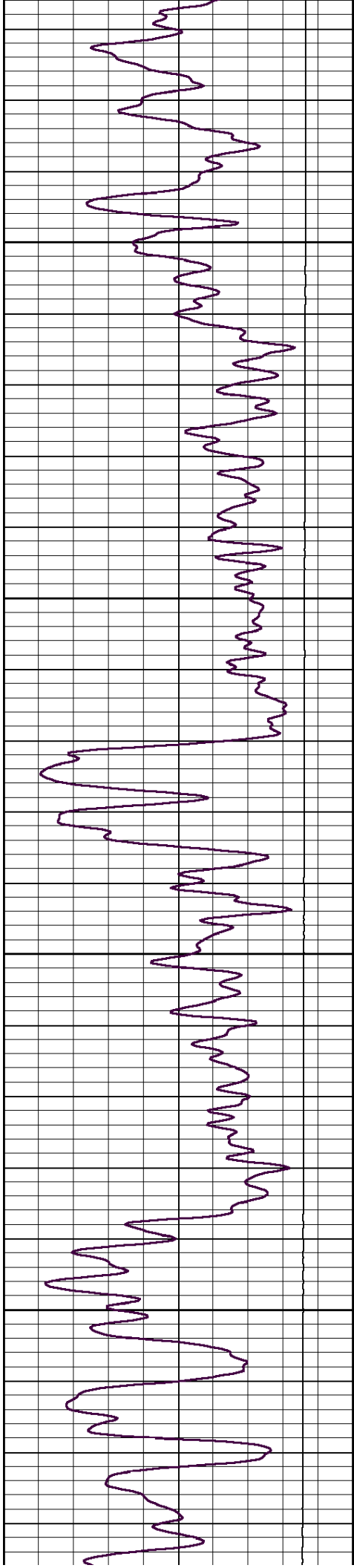
Database File: johnroyevans\_demel\_3\_grcbl.db  
Dataset Pathname: grcbl/pass3.1  
Presentation Format: cbldr  
Dataset Creation: Tue Mar 11 09:20:44 2014  
Charted by: Depth in Feet scaled 1:240

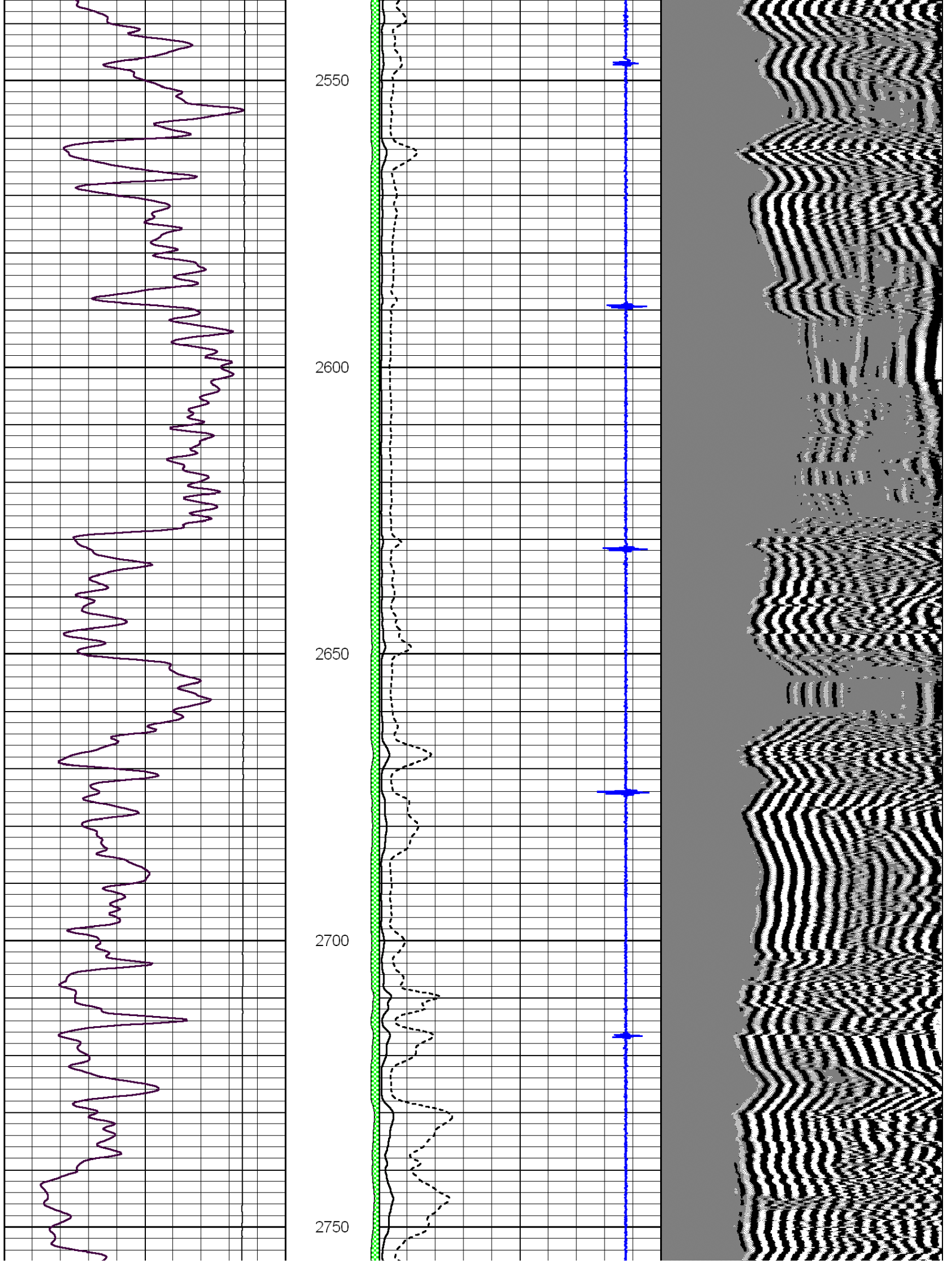
0	Gamma Ray	150	amp3ft	5	Casing Collars	-0.7	200	wvf5ft	1200
			(mV)	0	Amplified Amplitude (mV)	100			
			-100	10	Pipe Amplitude (mV)	20			

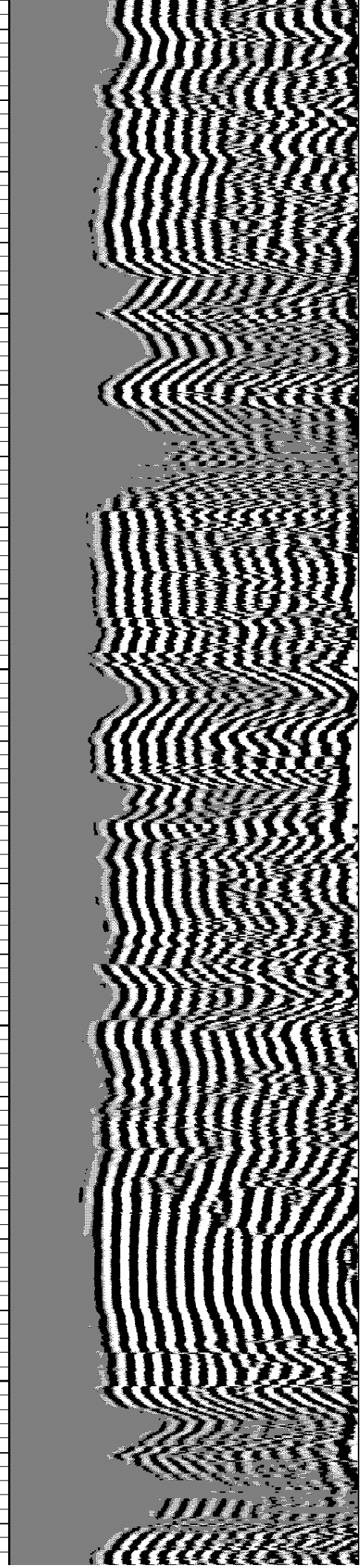
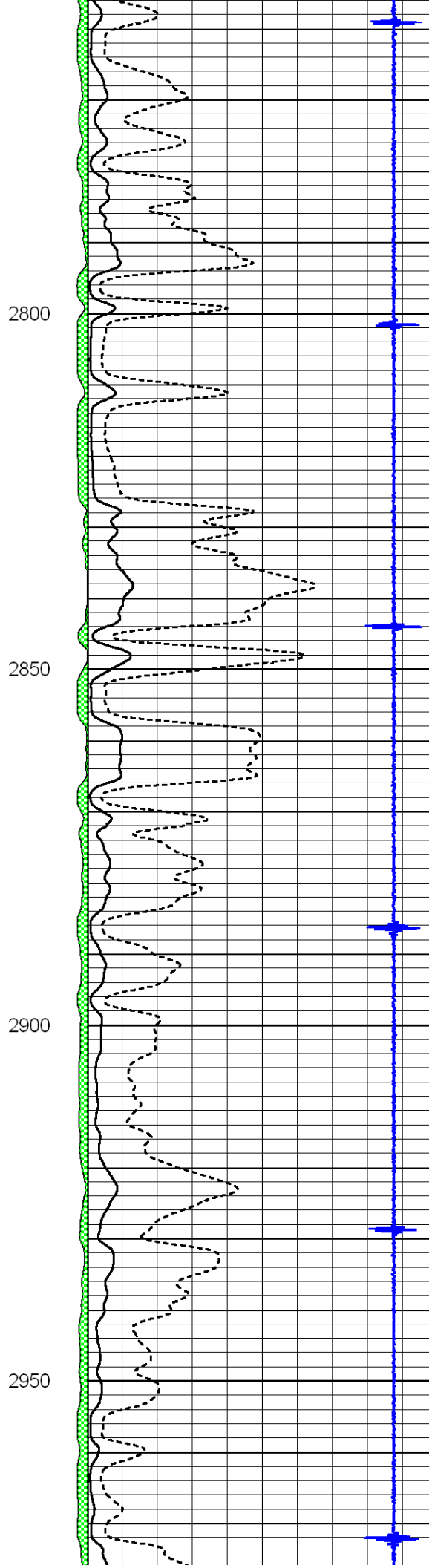
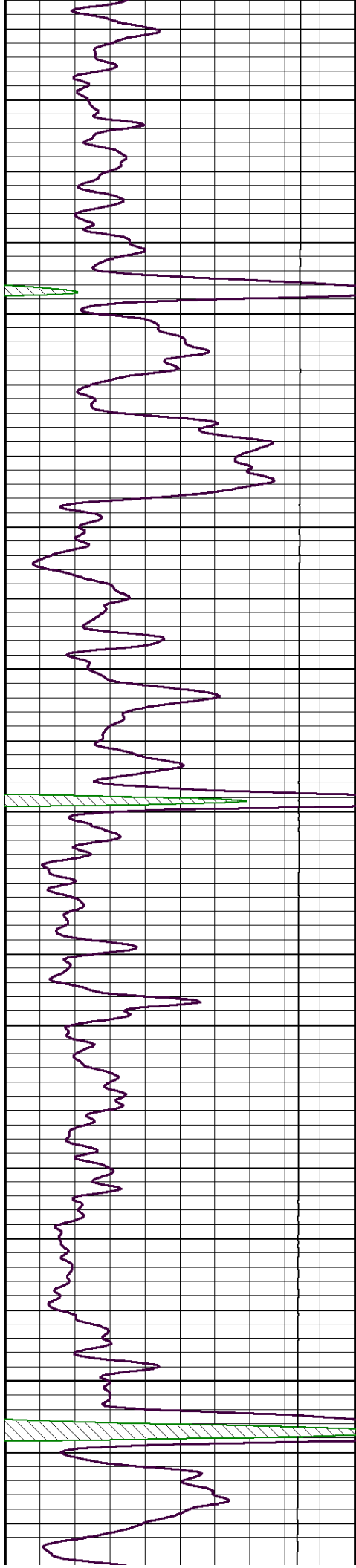


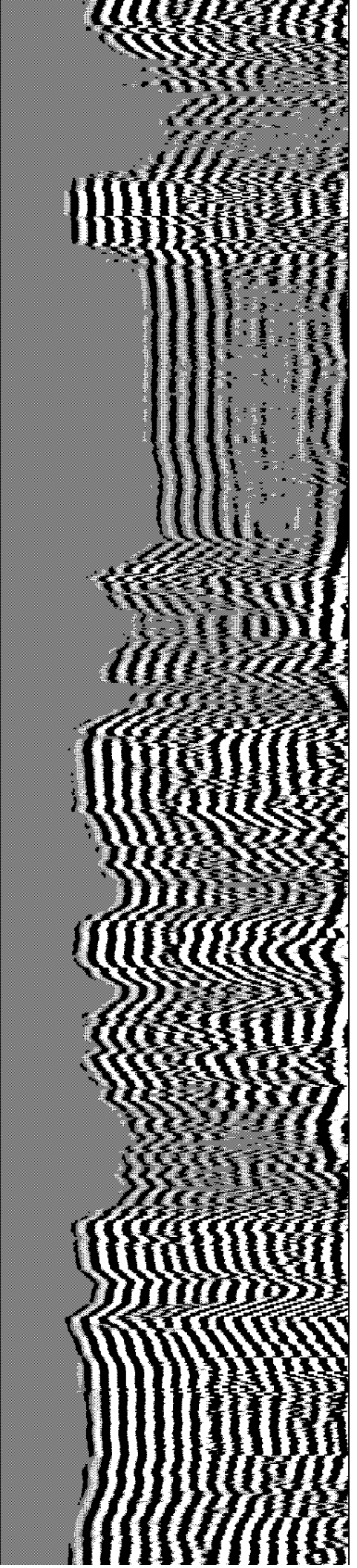
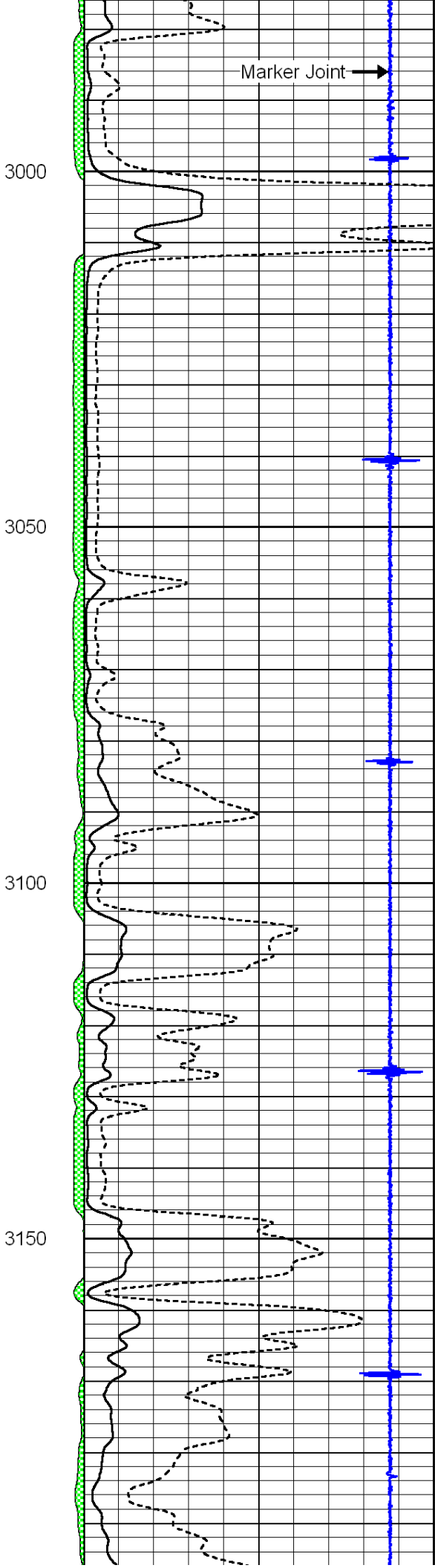
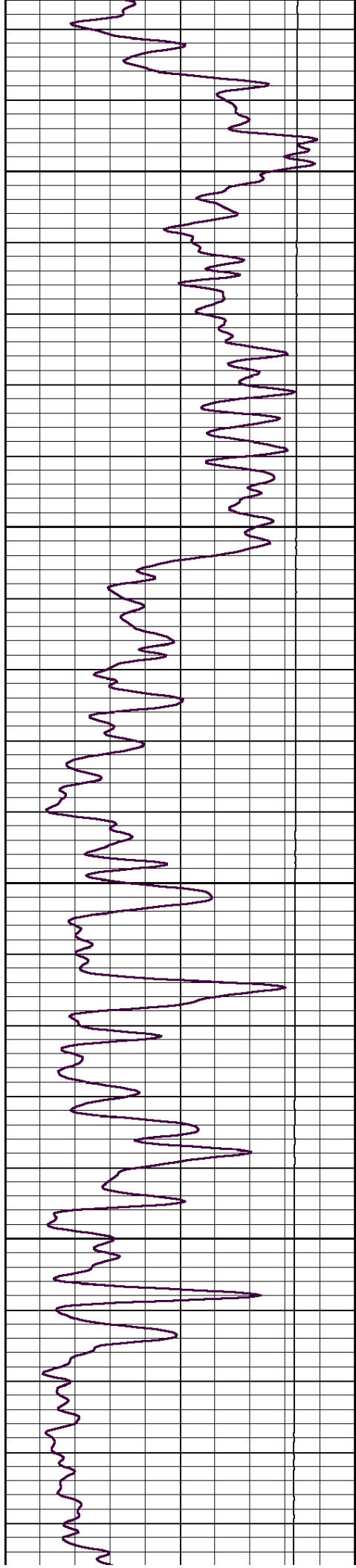


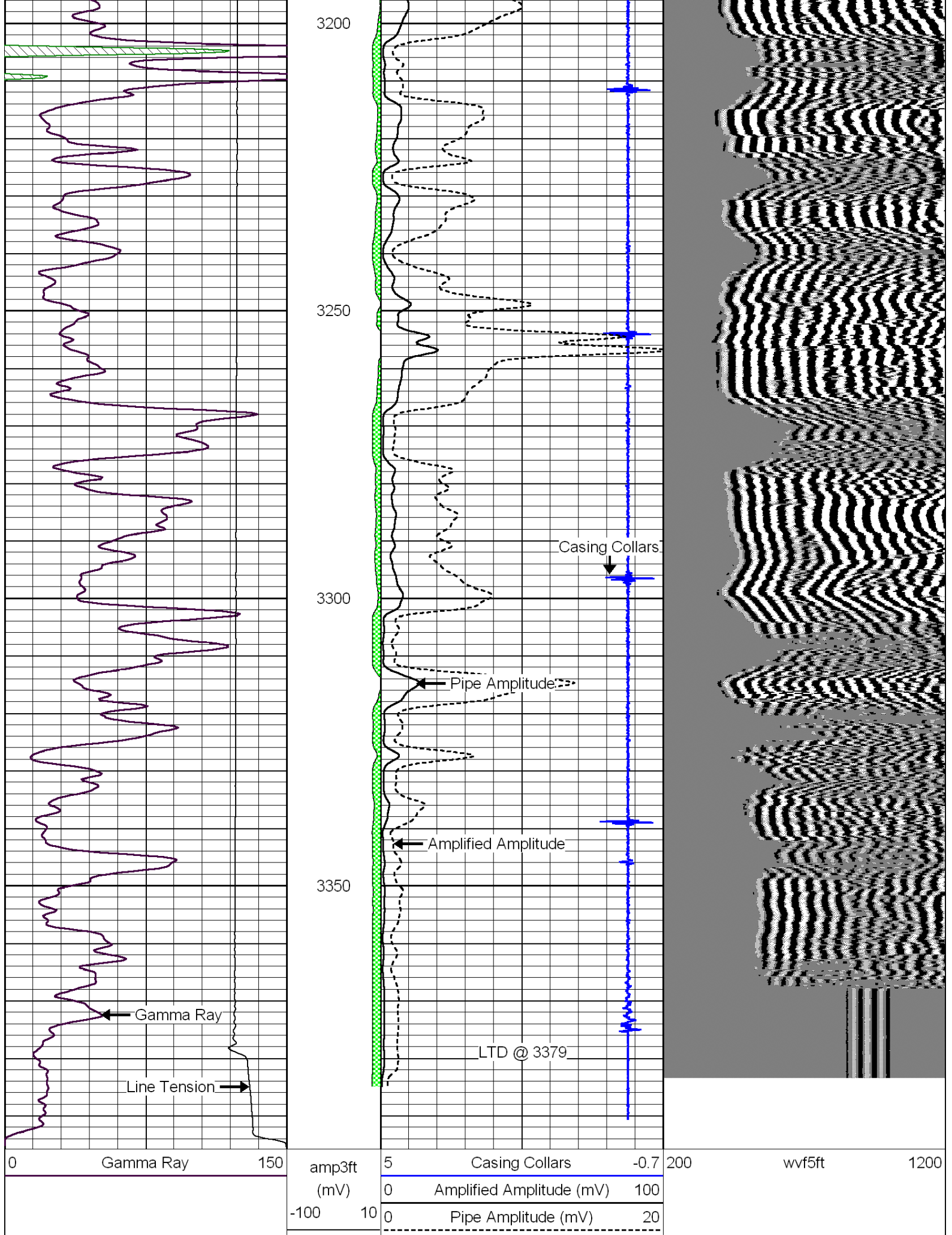












3200

3250

3300

3350

Casing Collars

Pipe Amplitude

Amplified Amplitude

LTD @ 3379

Gamma Ray

Line Tension

0 Gamma Ray 150

amp3ft	5	Casing Collars	-0.7
(mV)	0	Amplified Amplitude (mV)	100
-100	10	Pipe Amplitude (mV)	20

200 wvf5ft 1200

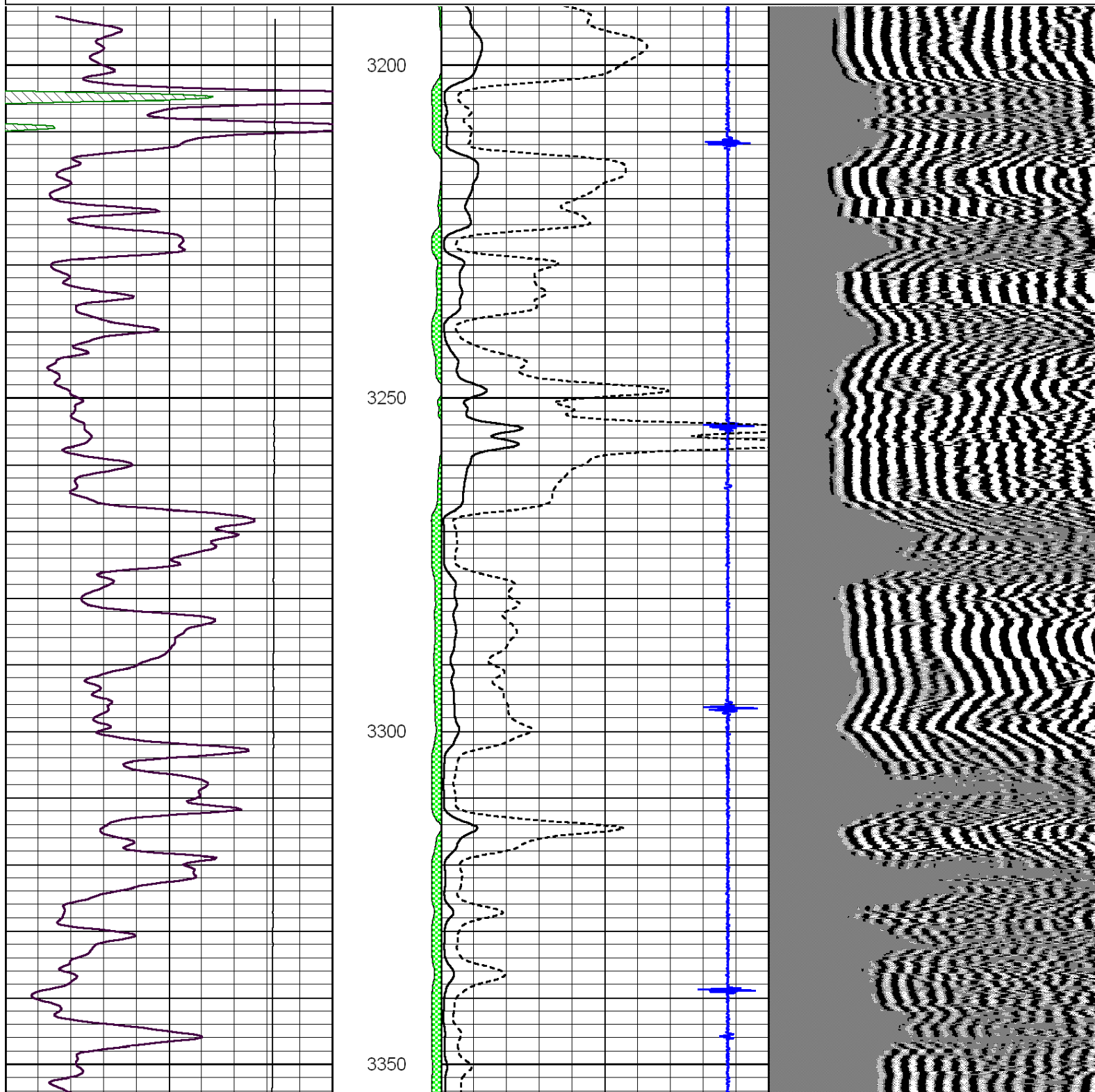


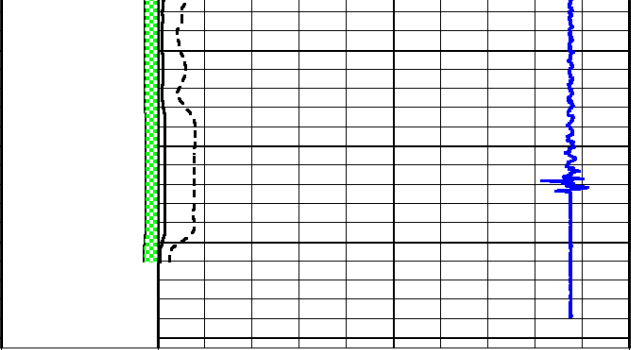
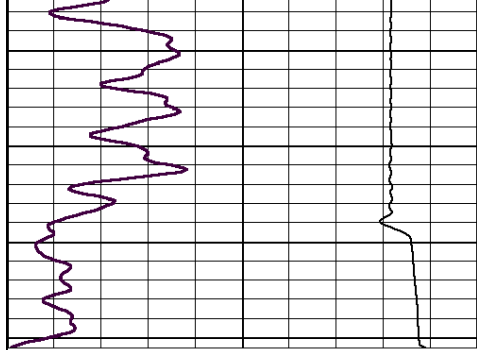
Pioneer Energy Services

# Repeat Section

Database File: johnroyevans\_demel\_3\_grcbl.db  
Dataset Pathname: grcbl/pass2  
Presentation Format: cbldr  
Dataset Creation: Tue Mar 11 08:35:20 2014 by Log Std Casedhole 09061  
Charted by: Depth in Feet scaled 1:240

0	Gamma Ray	150	amp3ft	5	Casing Collars	-0.7	200	wvf5ft	1200
			(mV)	0	Amplified Amplitude (mV)	100			
			-100	10	Pipe Amplitude (mV)	20			





0                      Gamma Ray                      150

amp3ft	5	Casing Collars	-0.7
(mV)	0	Amplified Amplitude (mV)	100
-100    10	0	Pipe Amplitude (mV)	20

200                      wvf5ft                      1200