



Pioneer Energy Services

Dual Induction Log

15-009-25,948-00-00

API No.

Company **John Roy Evans Oil Company LLC**

Well **Demel #3**

Field **Kraft-Prusa**

County **Barton** State **Kansas**

Location

NW SE NW NE
910' FNL & 1,815' FEL

Sec: 6 Twp: 17S Rge: 11W

Other Services
CNL/CDL
MEL

Elevation

Permanent Datum Ground Level Elevation 1876
Log Measured From Kelly Bushing 7 Ft. Above Perm. Datum
Drilling Measured From Kelly Bushing

K.B. 1883
D.F. 1876
G.L. 1876

Date	3/6/2014	
Run Number	One	
Depth Driller	3400	
Depth Logger	3400	
Bottom Logged Interval	3399	
Top Log Interval	750	
Casing Driller	8.625 @ 750	
Casing Logger	750	
Bit Size	7.875	
Type Fluid in Hole	Chemical	
Salinity, ppm CL	7500	
Density / Viscosity	9.3 56	
pH / Fluid Loss	10.5 9.2	
Source of Sample	Flowline	
Rm @ Meas. Temp	.50 @ 64	
Rmf @ Meas. Temp	.38 @ 64	
Rmc @ Meas. Temp	.68 @ 64	
Source of Rmf / Rmc	Charts	
Rm @ BHT	.29 @ 110	
Operating Rig Time	4 Hours	
Max Rec. Temp. F	110	
Equipment Number	108	
Location	Hays	
Recorded By	J. Long	
Witnessed By	Gary Kirmer	

<<< Fold Here >>>

All interpretations are opinions based on inferences from electrical or other measurements and we cannot and do not guarantee the accuracy or correctness of any interpretation, and we shall not, except in the case of gross or willful negligence on our part, be liable or responsible for any loss, costs, damages, or expenses incurred or sustained by anyone resulting from any interpretation made by any of our officers, agents or employees. These interpretations are also subject to our general terms and conditions set out in our current Price Schedule.

Comments

Thank you for using Pioneer Energy Services
www.pioneerenergy.com
 785 625 3858
 Claflin, 6 North to 170 Road, 2 1/2 West, South Into

Database File: c:\warrior\data\john roy evans_demel #3\johnroyevans_demel_3hd.db
 Dataset Pathname: dil/johnstck
 Presentation Format: dil2in
 Dataset Creation: Thu Mar 06 16:20:53 2014
 Charted by: Depth in Feet scaled 1:600

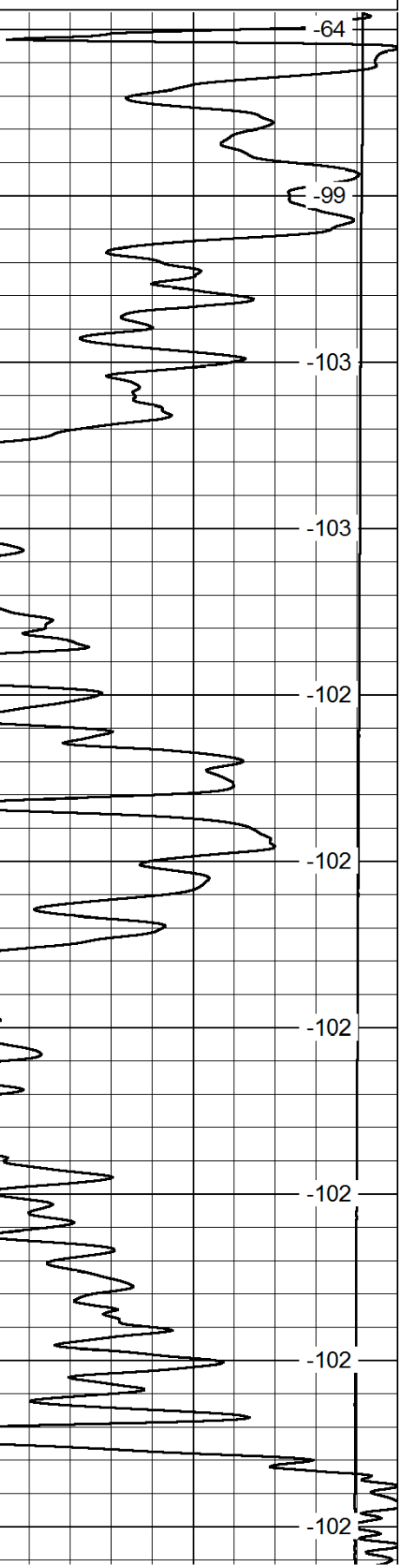
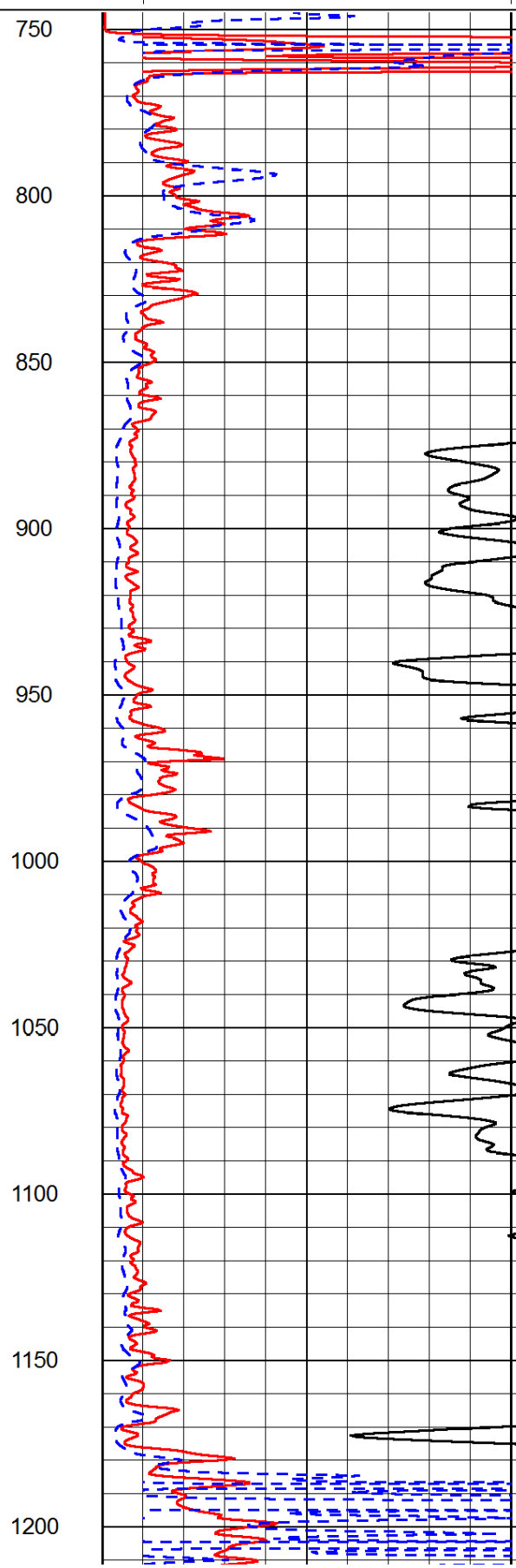
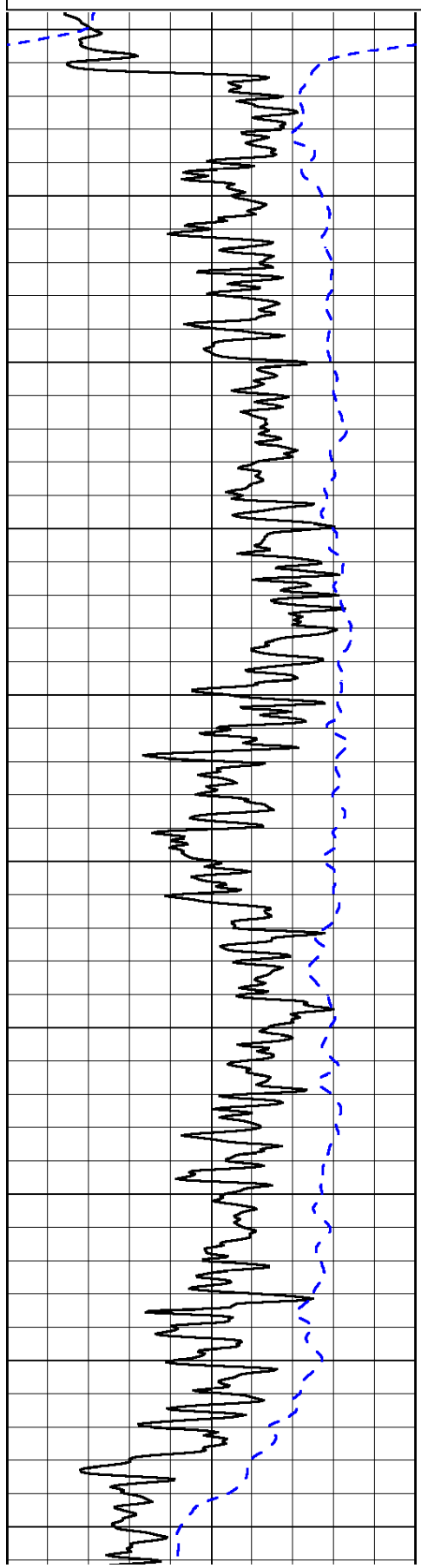
0	Gamma Ray	150
-200	SP (mV)	0

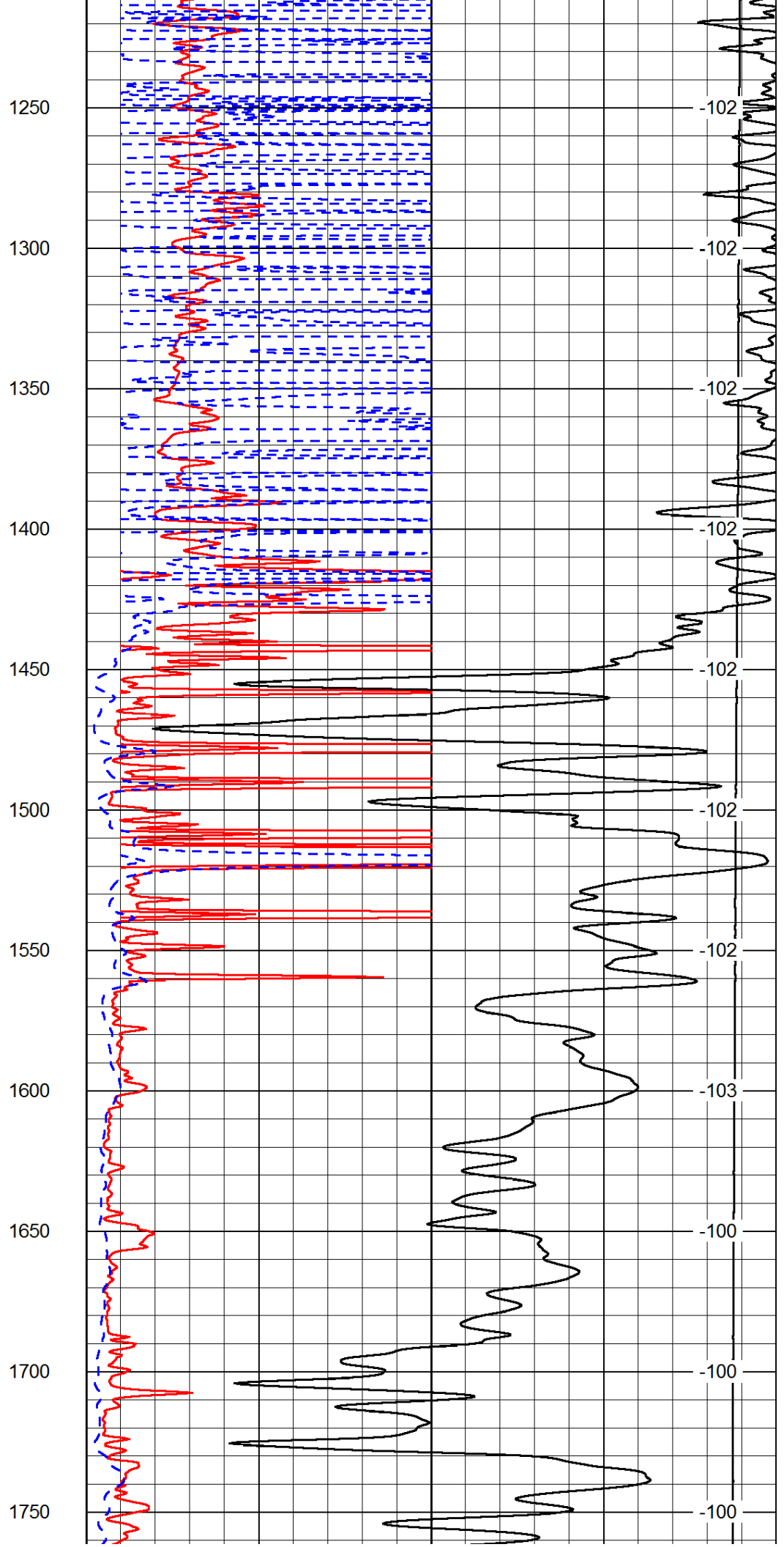
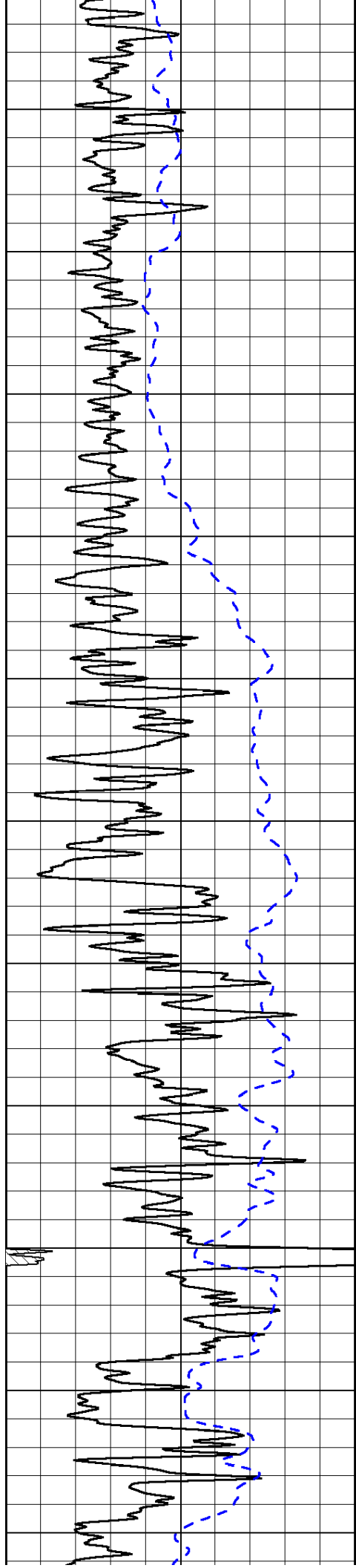
0	Shallow Resistivity	50
0	Deep Resistivity	50

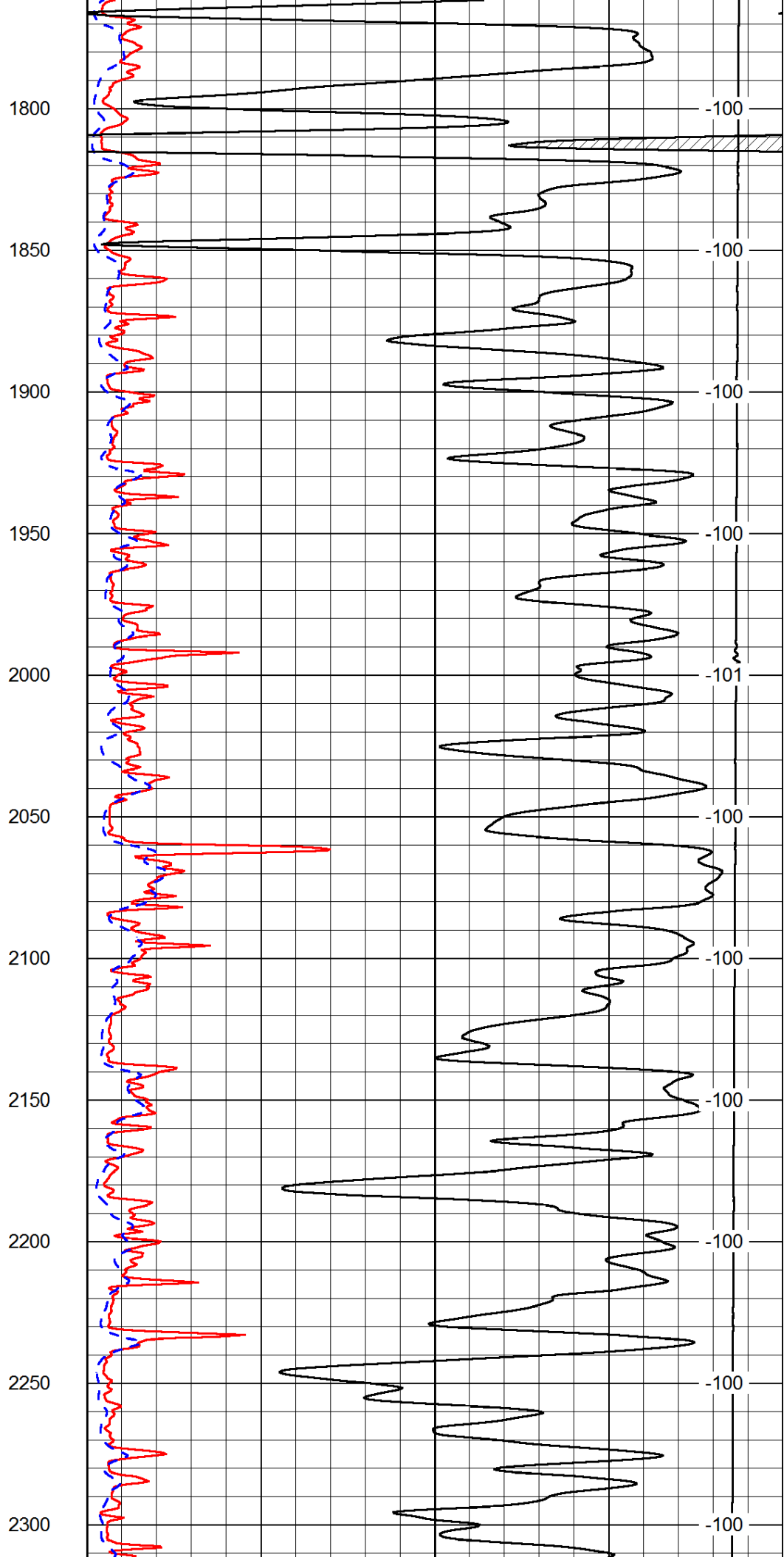
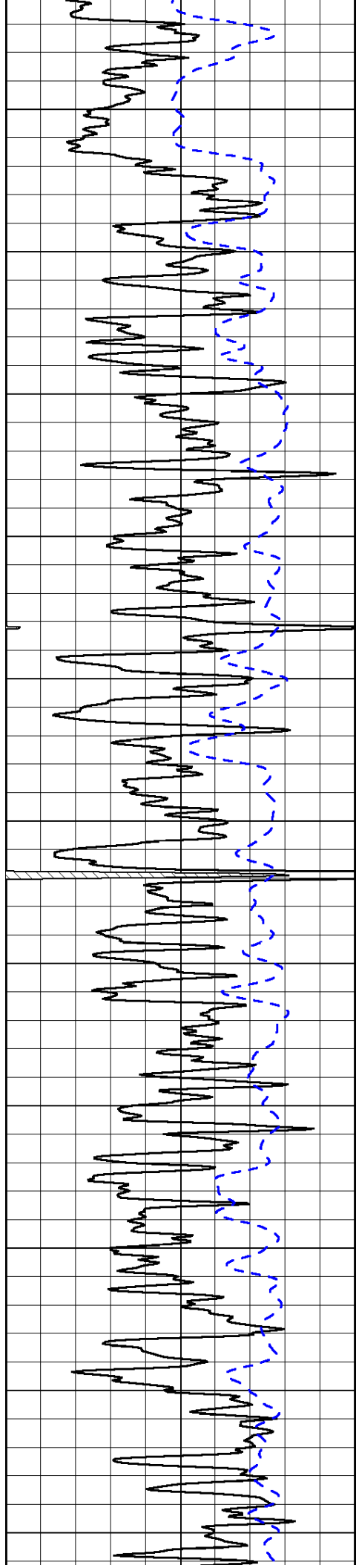
LSPD

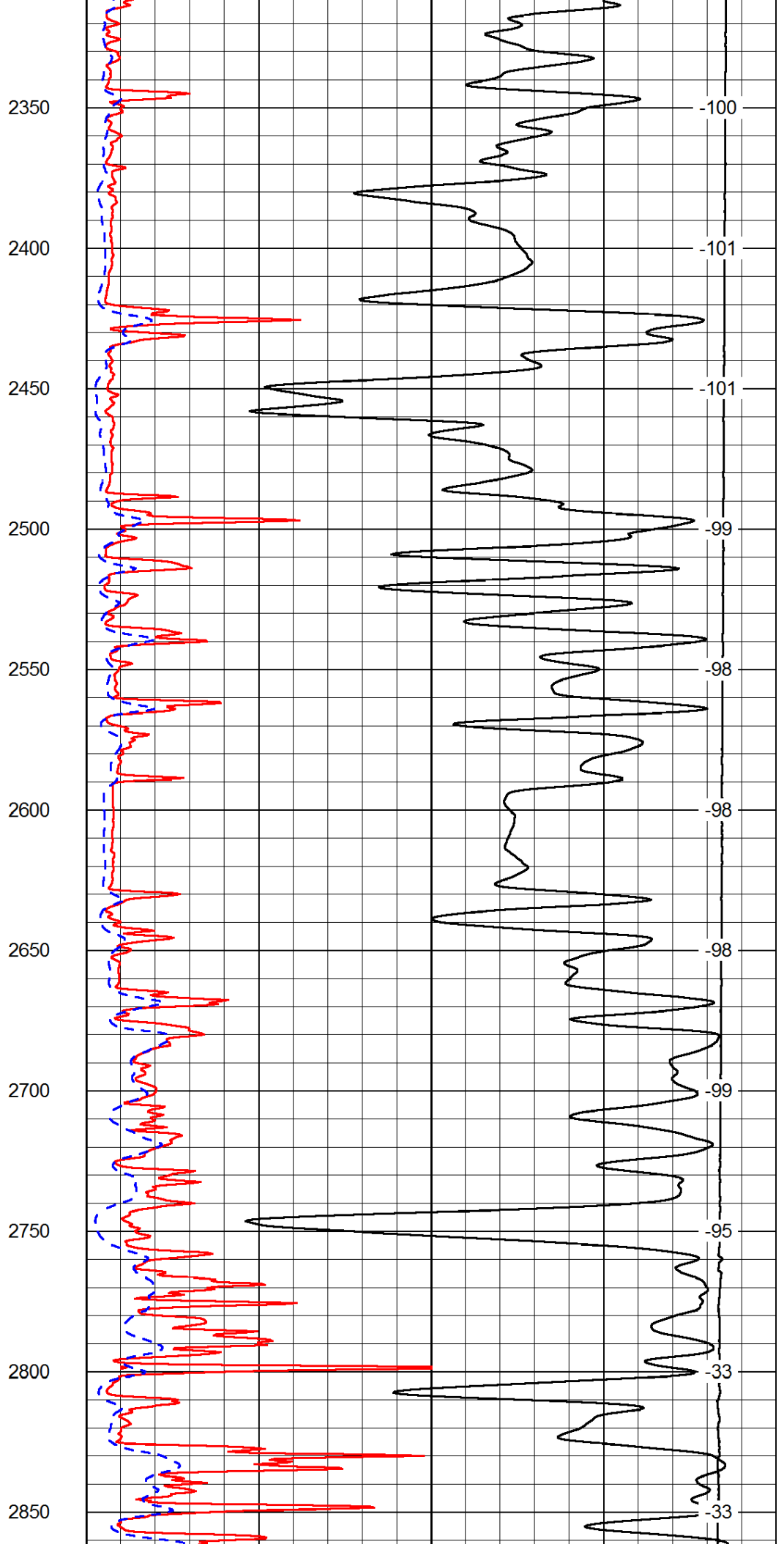
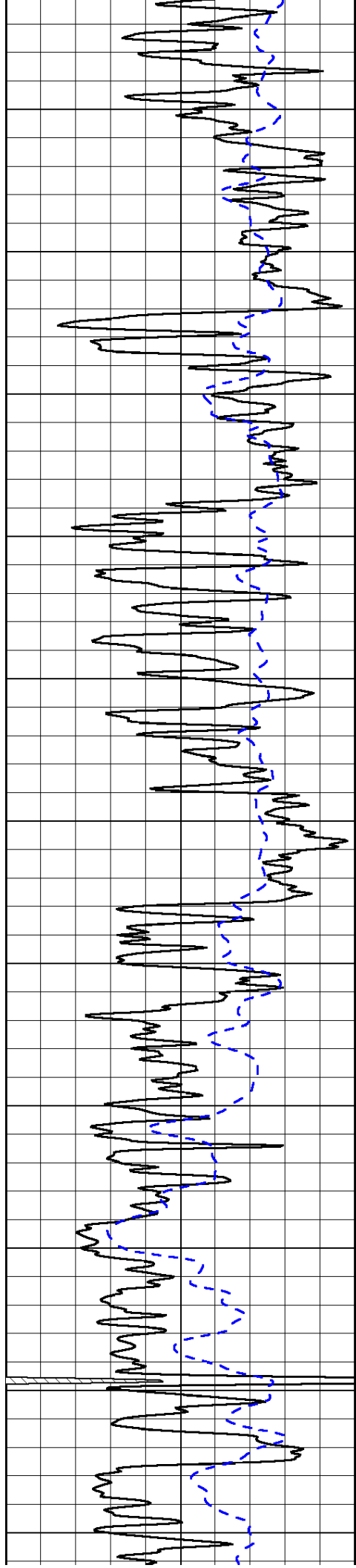
1000	Conductivity	0
15000	Line Tension	0

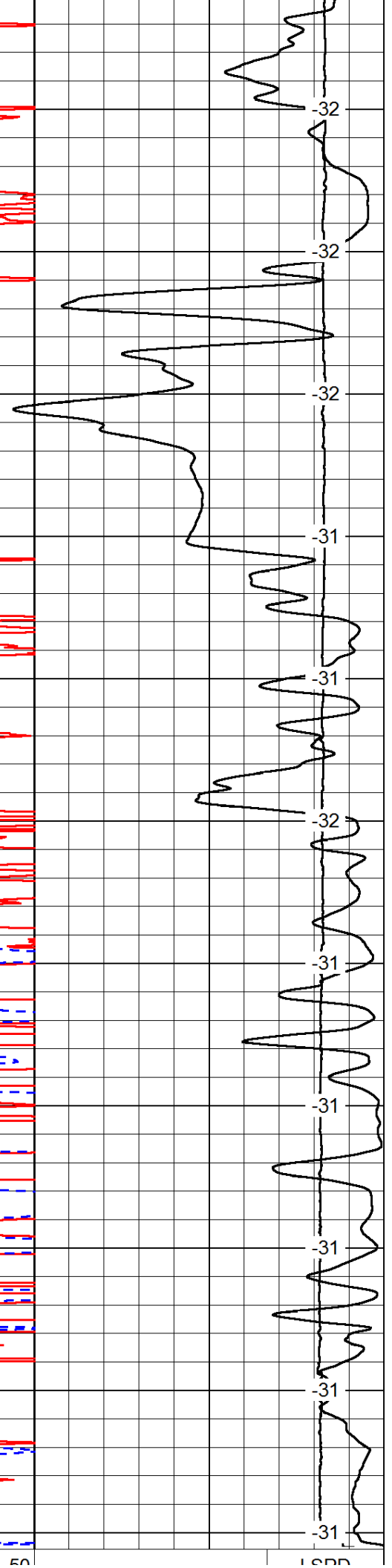
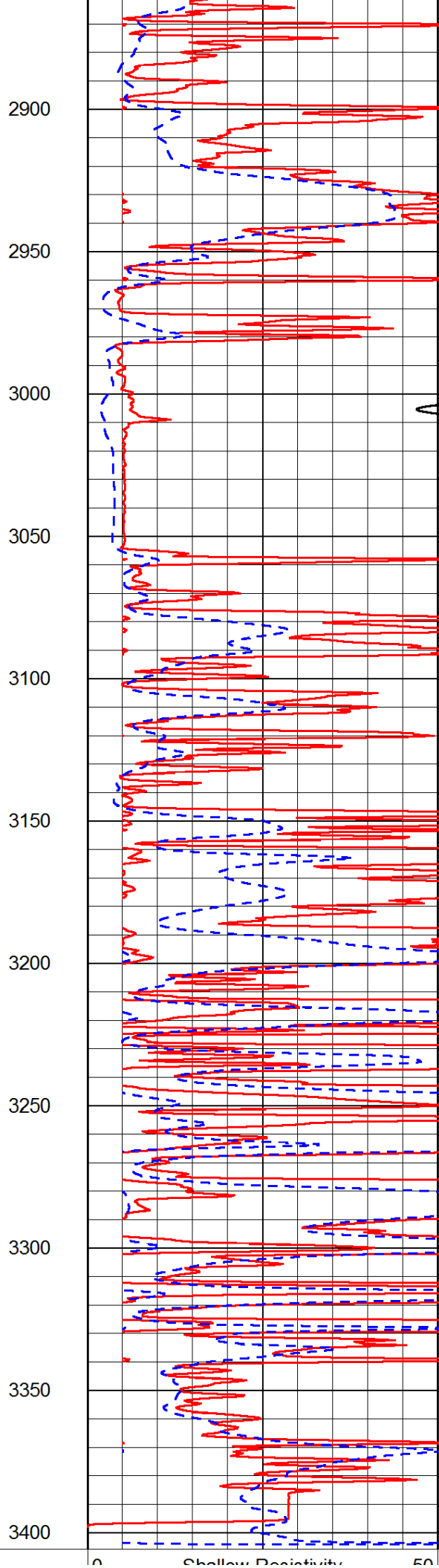
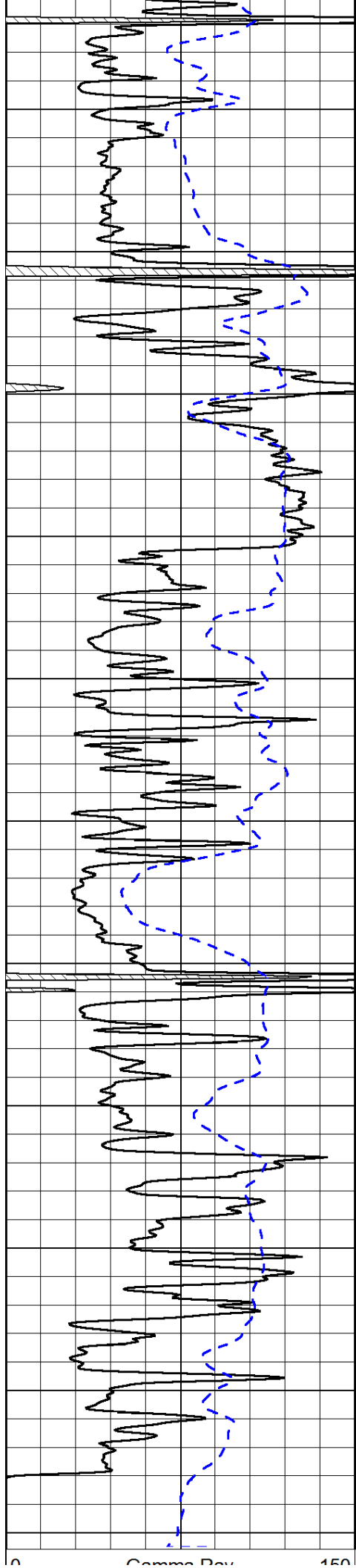
50	Shallow Resistivity	500
50	Deep Resistivity	500











0	Gamma Ray	150
-200	SP (mV)	0

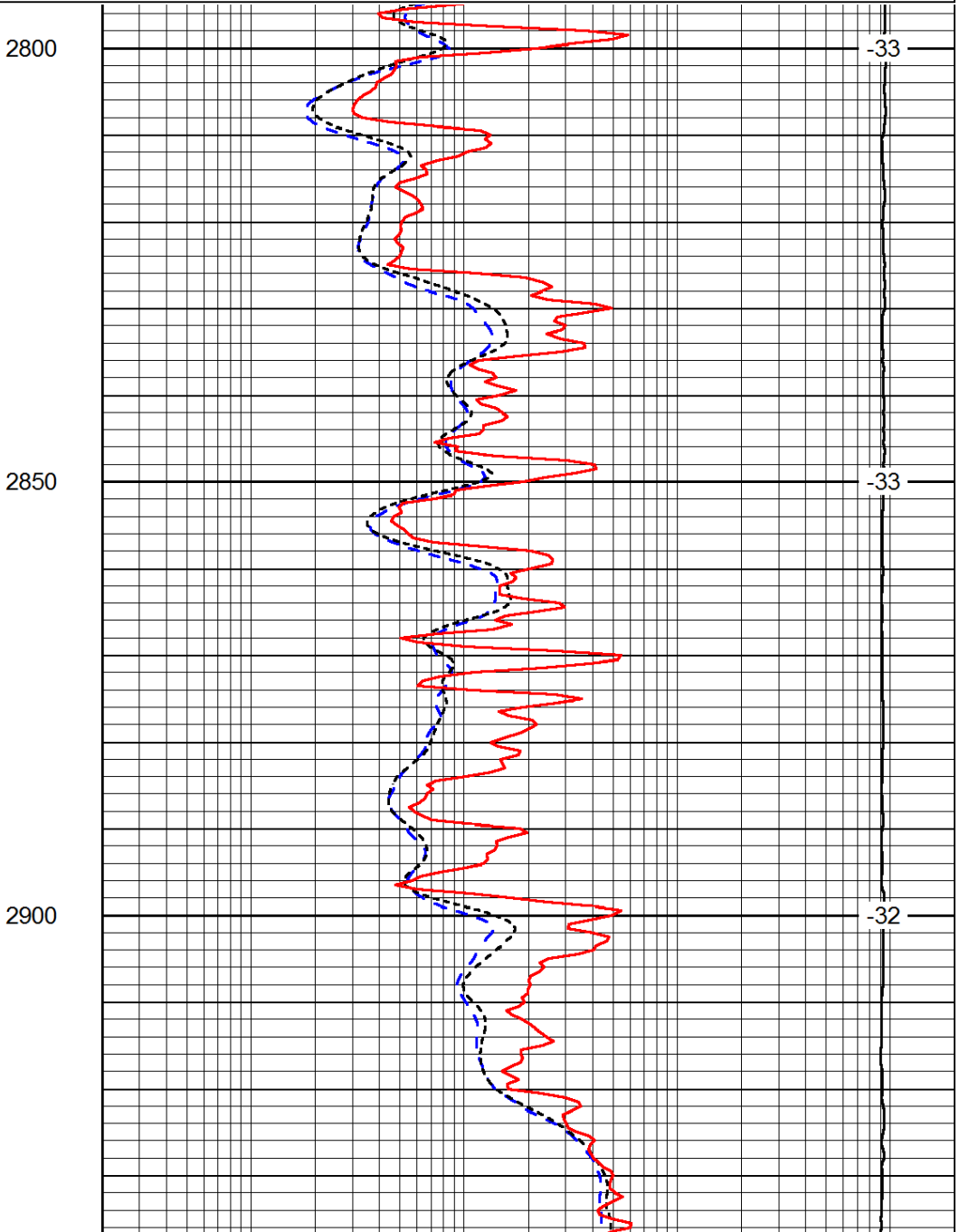
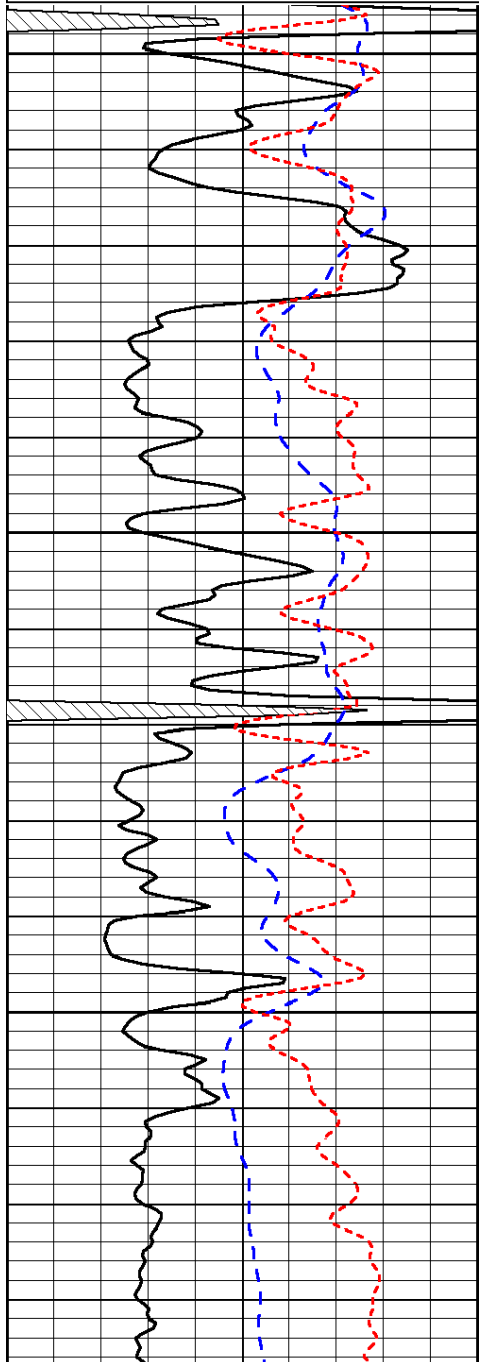
0	Shallow Resistivity	50
0	Deep Resistivity	50
1000	Conductivity	0
15000	Line Tension	0
50	Shallow Resistivity	500
50	Deep Resistivity	500

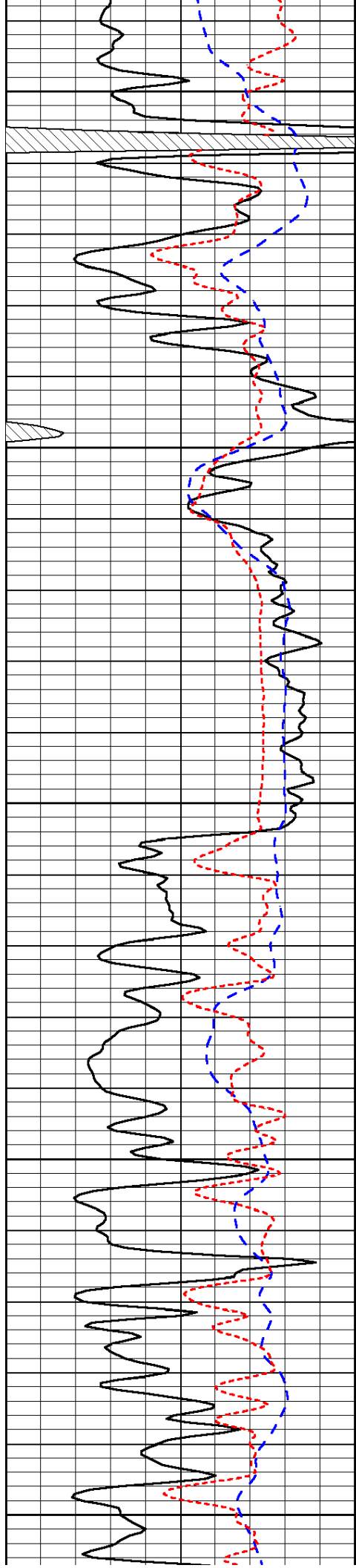
Database File: c:\warrior\data\john roy evans_demel #3\johnroyevans_demel_3hd.db
 Dataset Pathname: dil/johnstck
 Presentation Format: dil
 Dataset Creation: Thu Mar 06 16:20:53 2014
 Charted by: Depth in Feet scaled 1:240

0	Gamma Ray	150
-200	SP (mV)	0
-160	RxoRt	40

0.2	Deep Resistivity	2000
0.2	Medium Resistivity	2000
0.2	Shallow Resistivity	2000
15000	Line Tension	0

LSPD





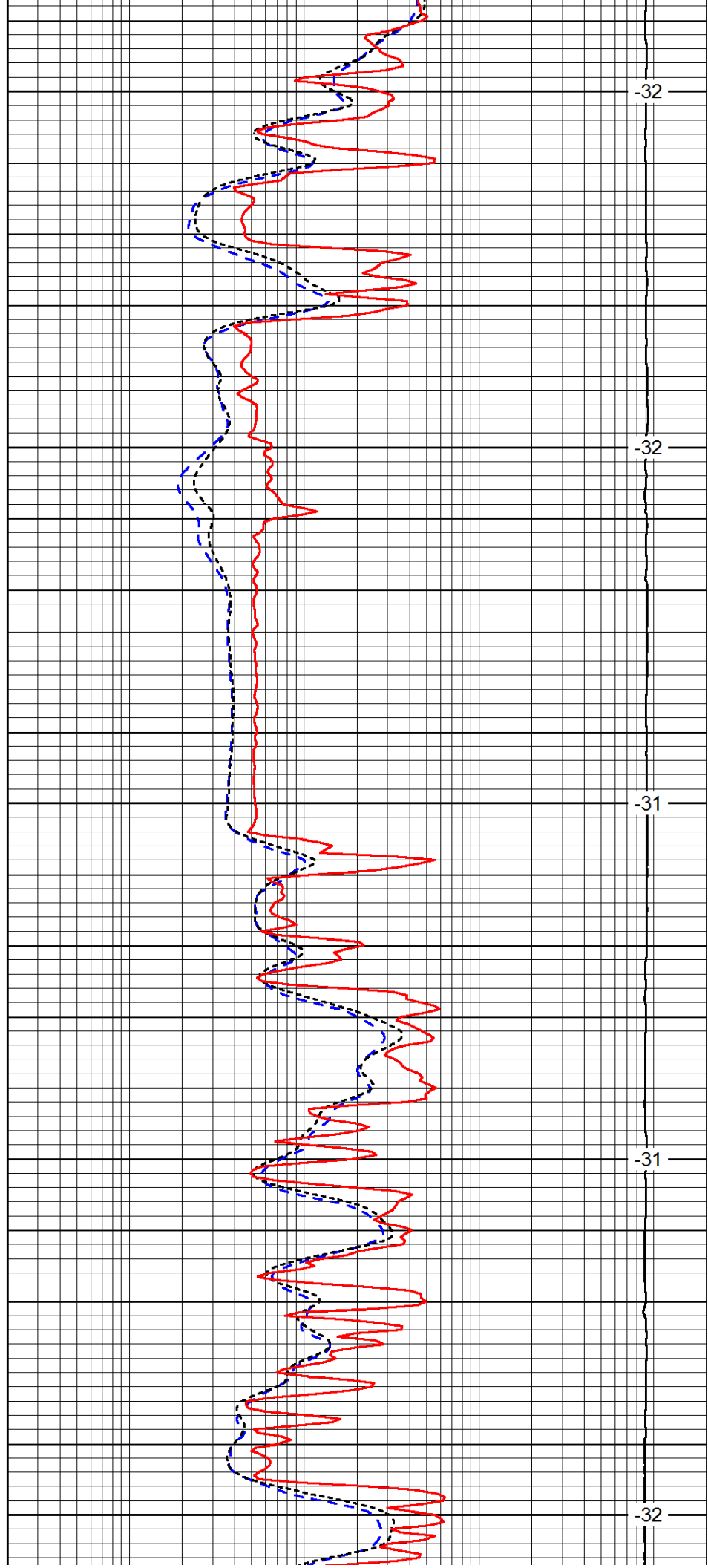
2950

3000

3050

3100

3150



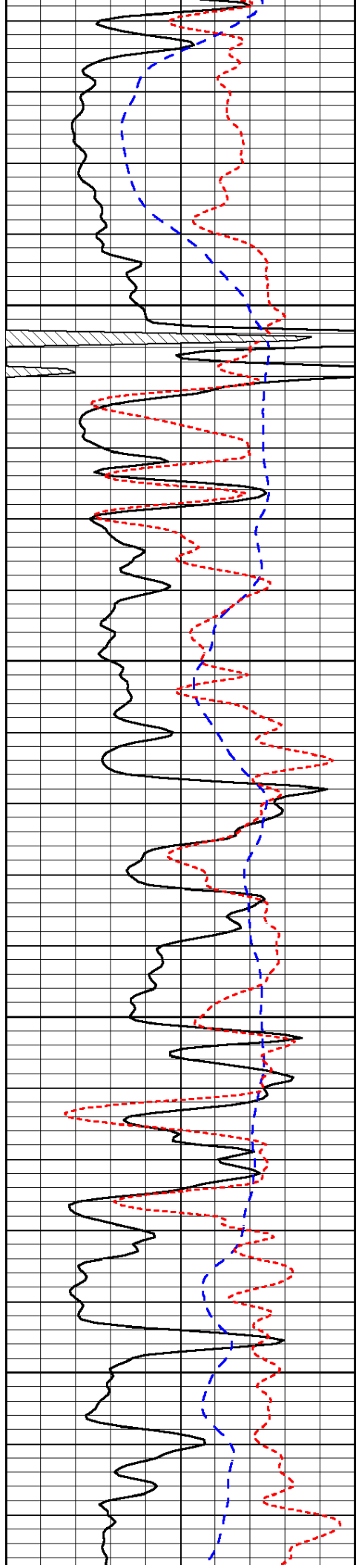
-32

-32

-31

-31

-32

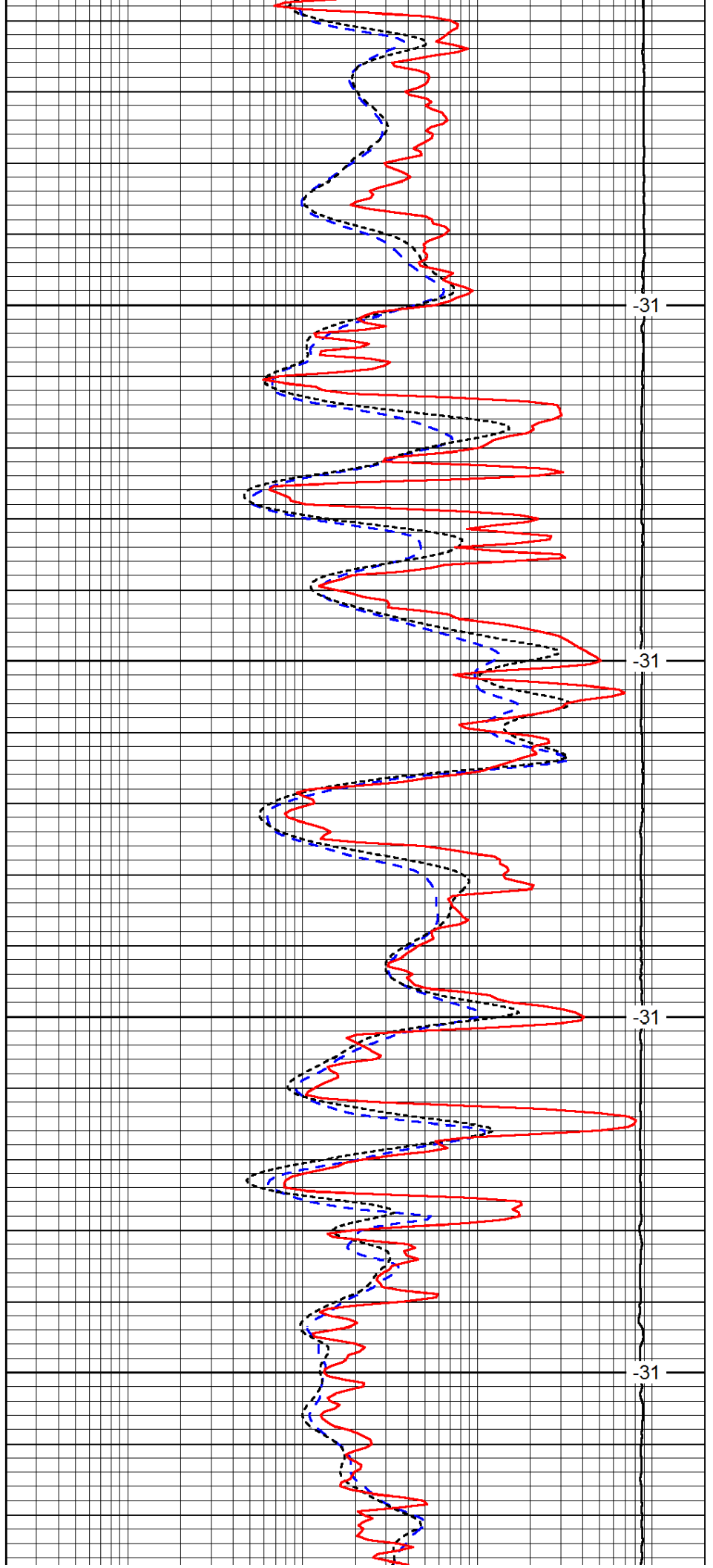


3200

3250

3300

3350

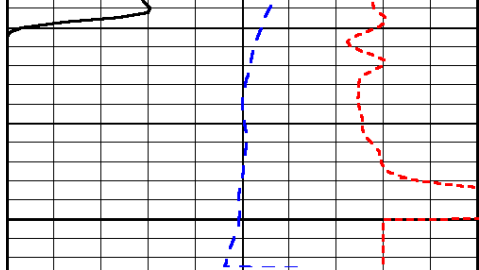


-31

-31

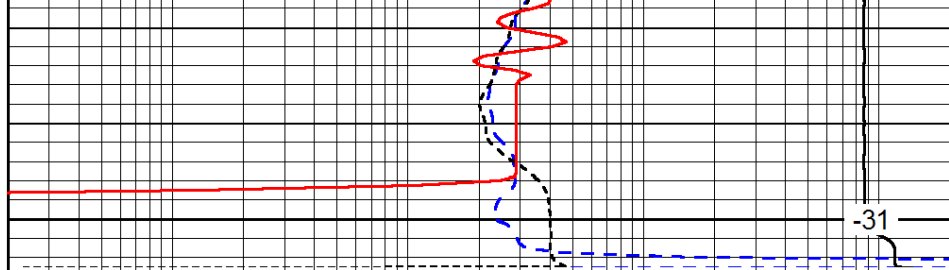
-31

-31



0	Gamma Ray	150
-200	SP (mV)	0
-160	RxoRt	40

3400



0.2	Deep Resistivity	2000
0.2	Medium Resistivity	2000
0.2	Shallow Resistivity	2000
15000	Line Tension	0

-31

LSPD