

**COMPLETION  
& PRODUCTION  
SERVICES CO.**

**RADIATION  
GUARD LOG**

Company RITCHIE EXPLORATION, INC.  
Well BIEKER - STEHNO #1  
Field WILDCAT  
County GRAHAM  
State KANSAS

Company RITCHIE EXPLORATION, INC.  
Well BIEKER - STEHNO #1  
Field WILDCAT  
County GRAHAM State KANSAS

Location: API # : 15-065-23949  
2410' FSL & 2010' FWL  
SEC 6 TWP 6S RGE 24W  
Permanent Datum GROUND LEVEL Elevation 2448  
Log Measured From KELLY BUSHING 5' A.G.L.  
Drilling Measured From KELLY BUSHING  
Other Services  
Elevation  
K.B. 2453  
D.F.  
G.L. 2448

Date	6-29-13
Run Number	ONE
Depth Driller	3830
Depth Logger	3830
Bottom Logged Interval	3829
Top Log Interval	00
Casing Driller	260
Casing Logger	260
Bit Size	7.875
Type Fluid in Hole	CHEMICAL MUD
Density / Viscosity	9.4 / 60
pH / Fluid Loss	10.5 / 7.2
Source of Sample	FLOWLINE
Rim @ Meas. Temp	1.30 @ 84F
Rmf @ Meas. Temp	0.98 @ 84F
Rmc @ Meas. Temp	1.56 @ 84F
Source of Rmf / Rmc	MEASURED
Rim @ BHT	.970 @ 113F
Time Circulation Stopped	2 HOURS
Time Logger on Bottom	12:45 A.M.
Maximum Recorded Temperature	113F
Equipment Number	860
Location	HAYS, KS.
Recorded By	RUPP
Witnessed By	MACK ARMSTRONG

<<< Fold Here >>>

All interpretations are opinions based on inferences from electrical or other measurements and we cannot and do not guarantee the accuracy or correctness of any interpretation, and we shall not, except in the case of gross or willful negligence on our part, be liable or responsible for any loss, costs, damages, or expenses incurred or sustained by anyone resulting from any interpretation made by any of our officers, agents or employees. These interpretations are also subject to our general terms and conditions set out in our current Price Schedule.

Comments

NABORS COMPLETION & PRODUCTION SERVICES  
785-628-6395  
THANK YOU FOR YOUR BUSINESS  
DIRECTIONS: HILL CITY, 10W TO RD. 170 AVE., 12 1/2N, 3/4 W INTO.

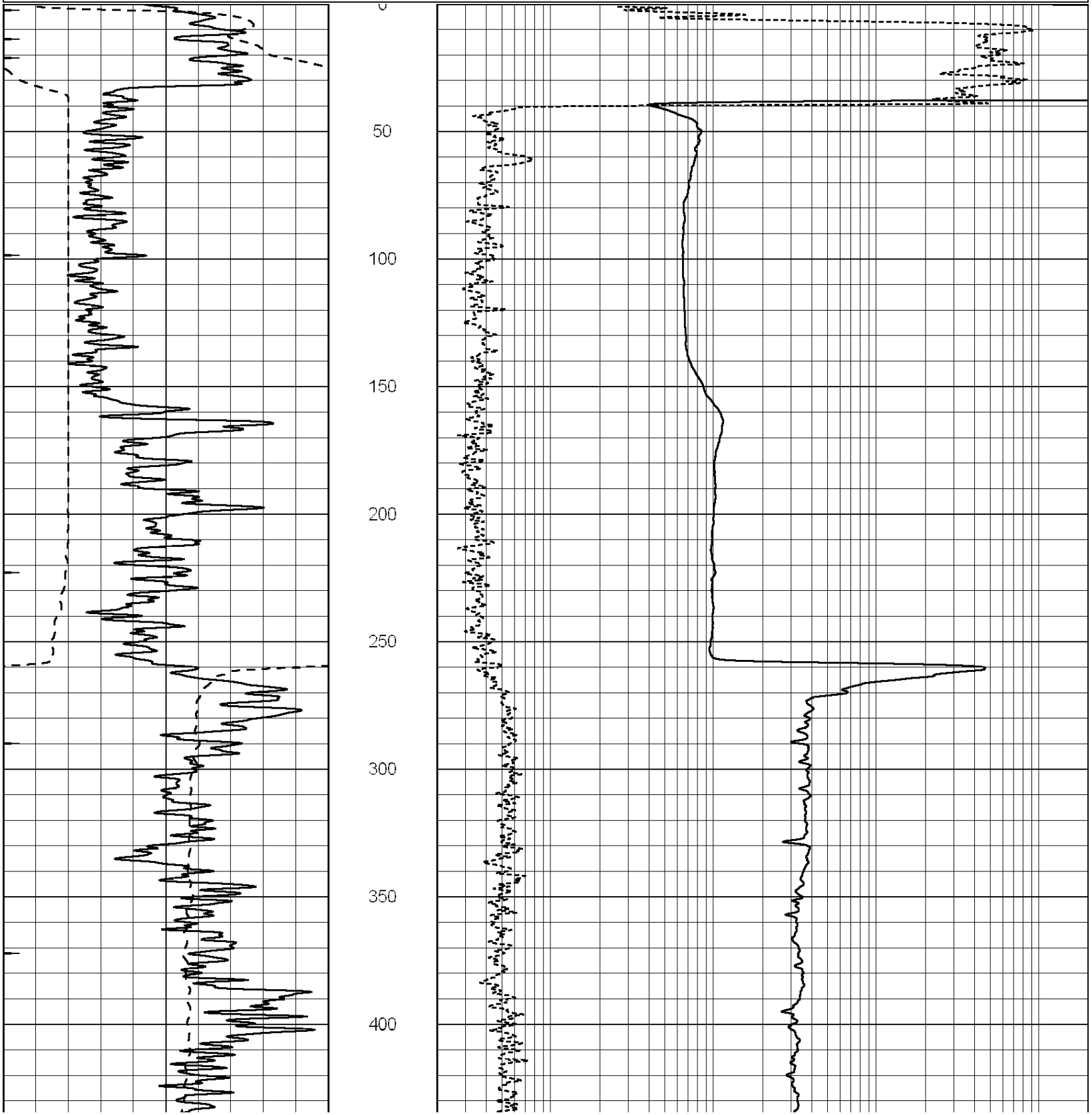


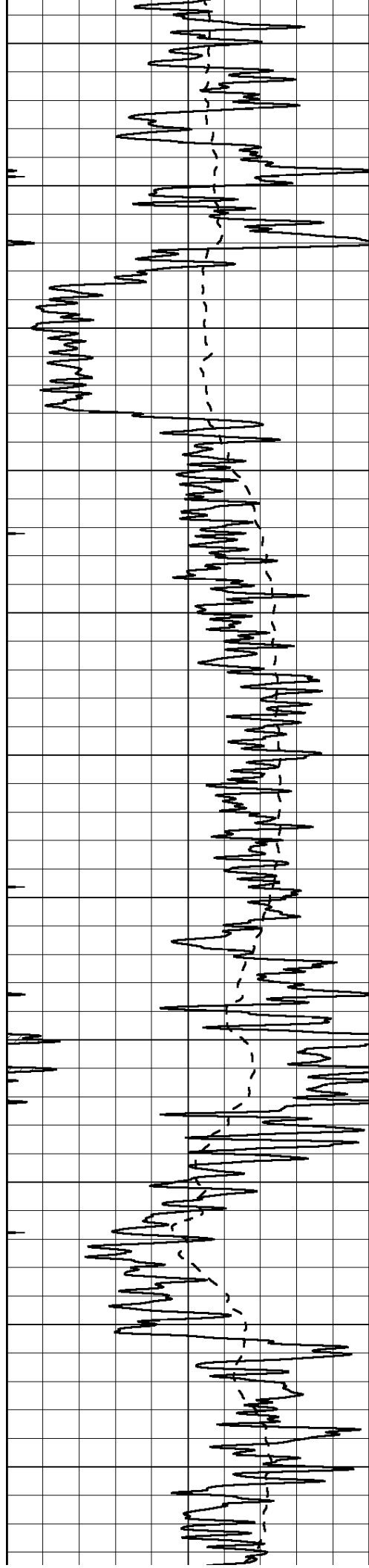
**COMPLETION  
& PRODUCTION**

**MAIN SECTION**

Database File: 011351rag.db  
 Dataset Pathname: pass4.2A  
 Presentation Format: rag2  
 Dataset Creation: Sat Jun 29 02:25:41 2013 by Calc Open-Cased 090629  
 Charted by: Depth in Feet scaled 1:600

0	GAMMA RAY (GAPI)	150	ABHV (ft3)	0.2	GUARD (Ohm-m)	2000
-100	SP (mV)	100		0	NEUTRON (NAPI)	1000
-----			TBHV (ft3)	-----		





450

500

550

600

650

700

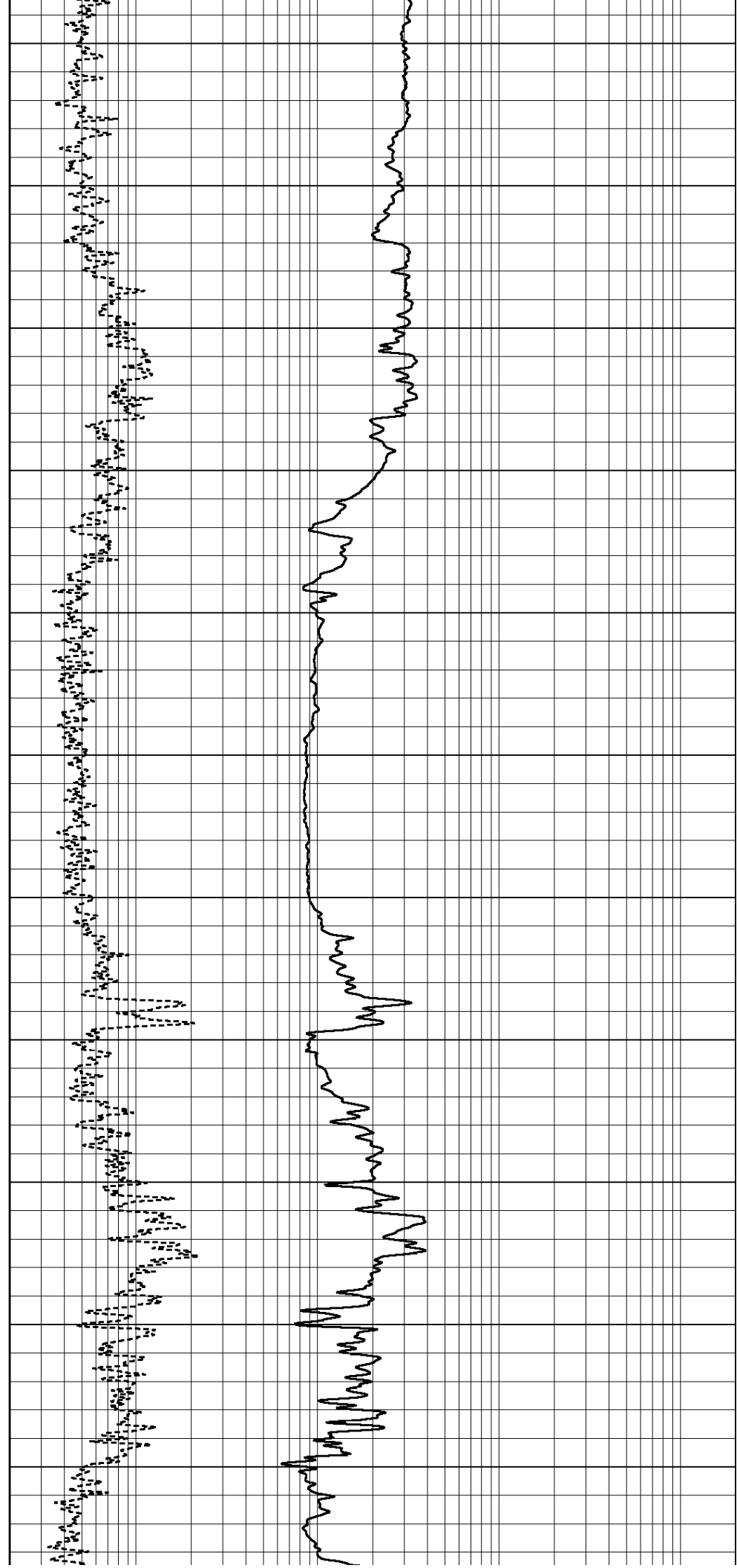
750

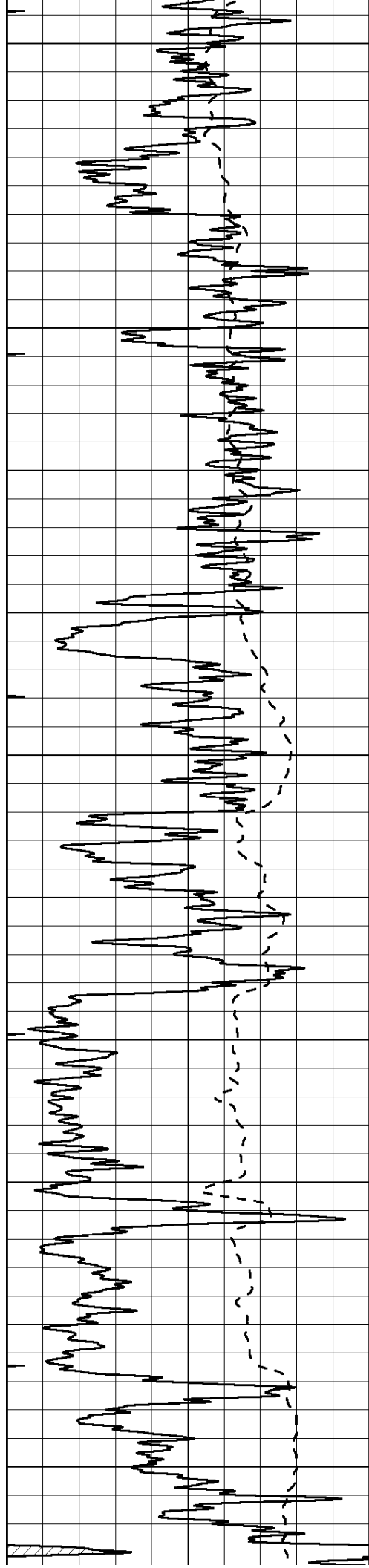
800

850

900

950





1000

1050

1100

1150

1200

1250

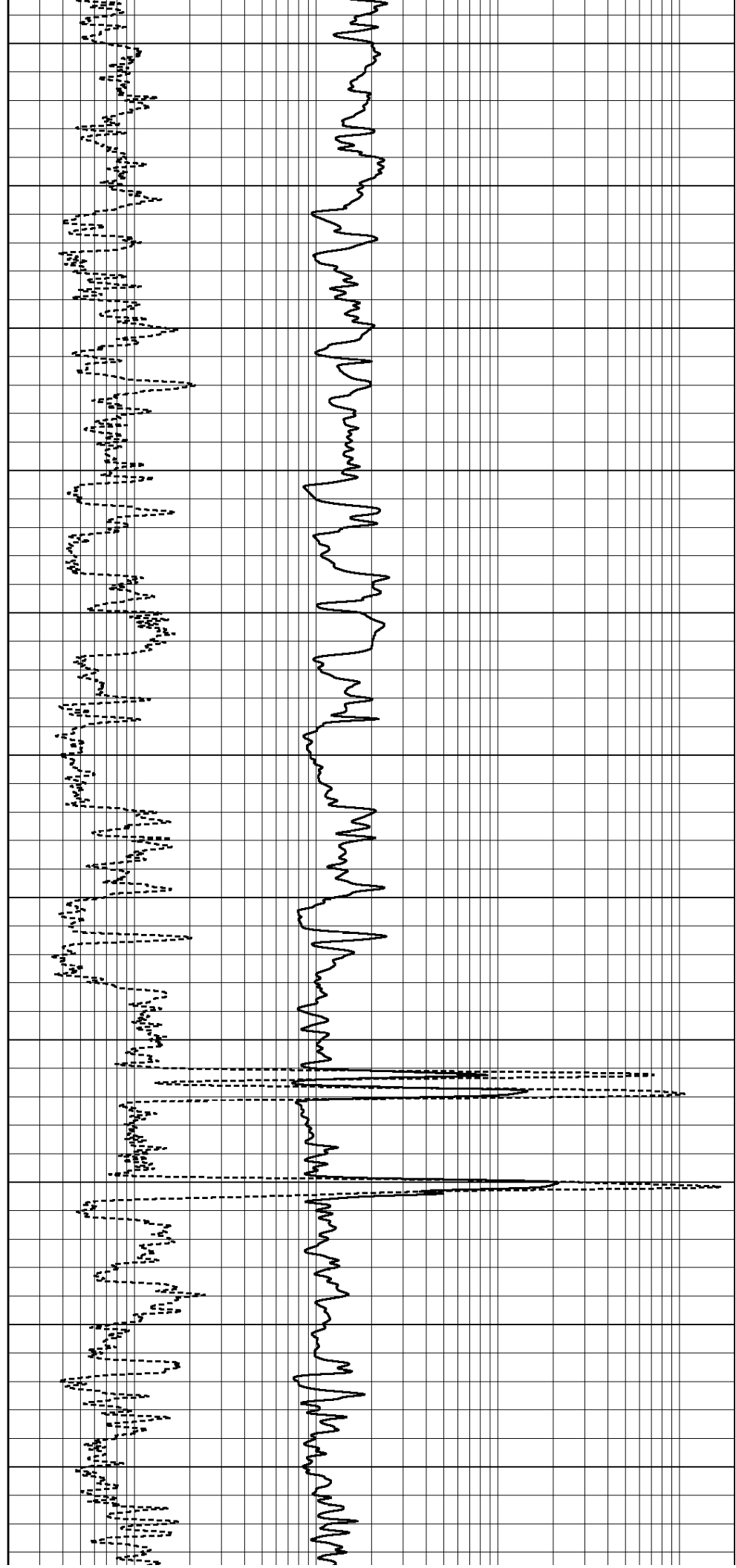
1300

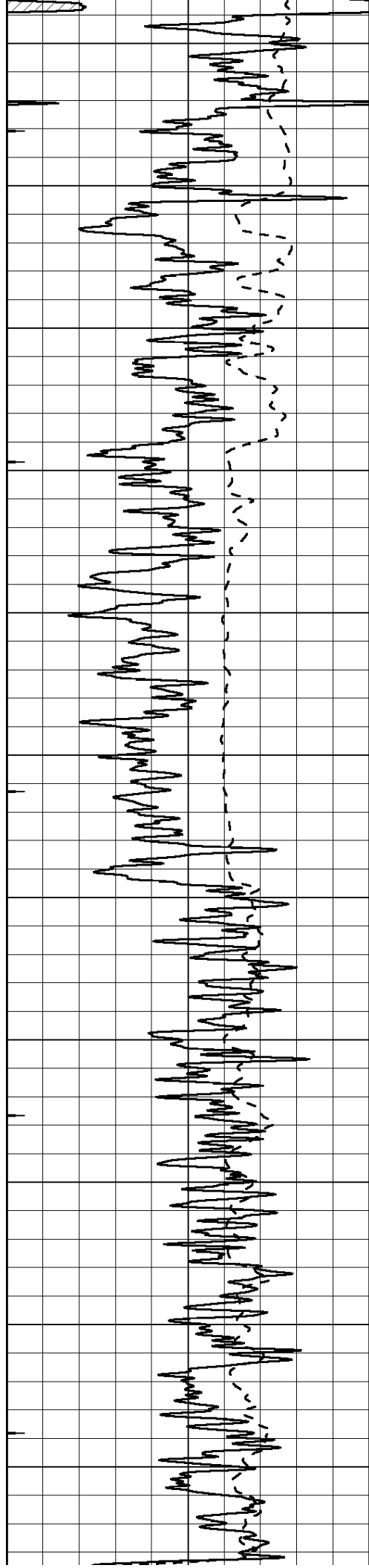
1350

1400

1450

1500





1550

1600

1650

1700

1750

1800

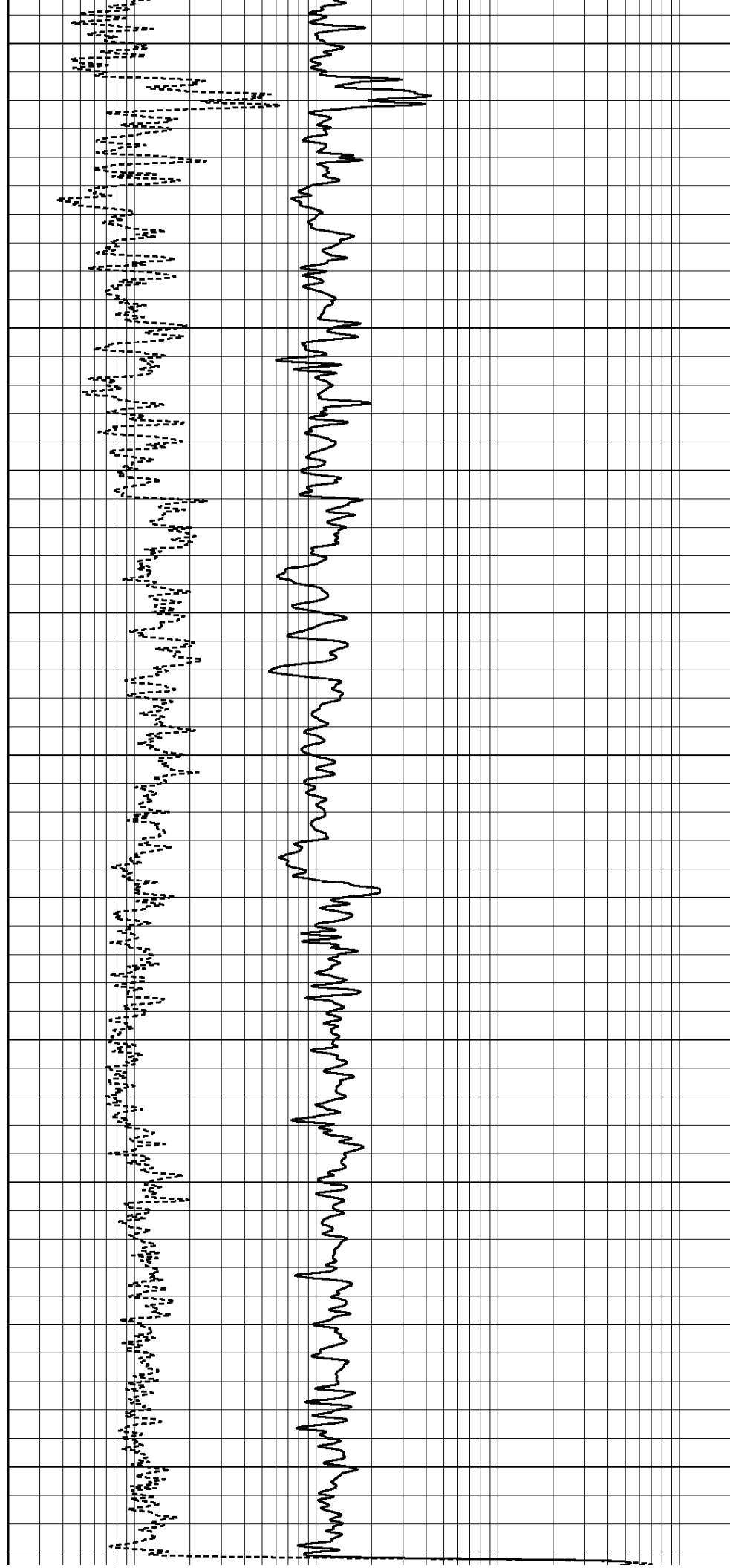
1850

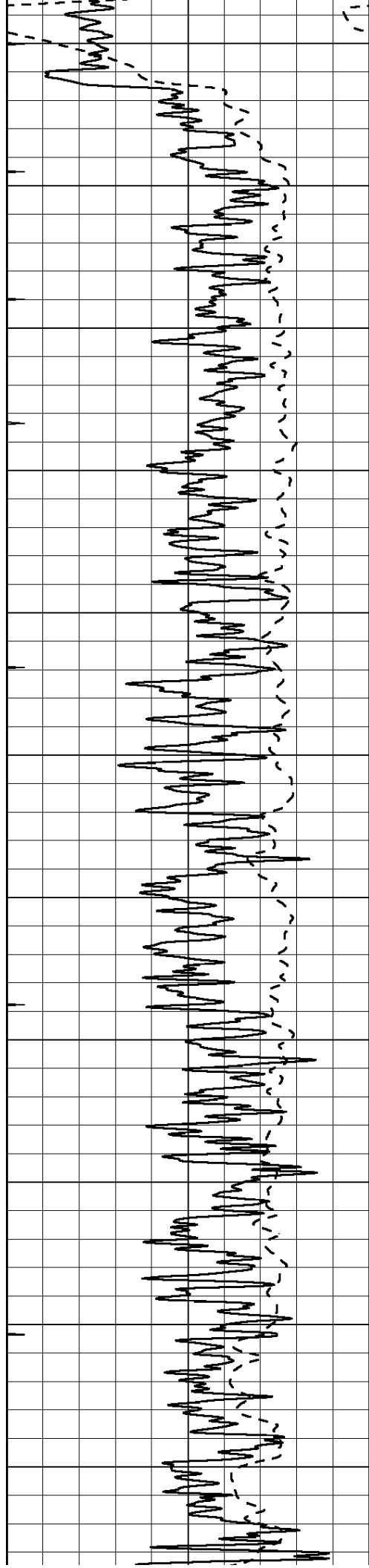
1900

1950

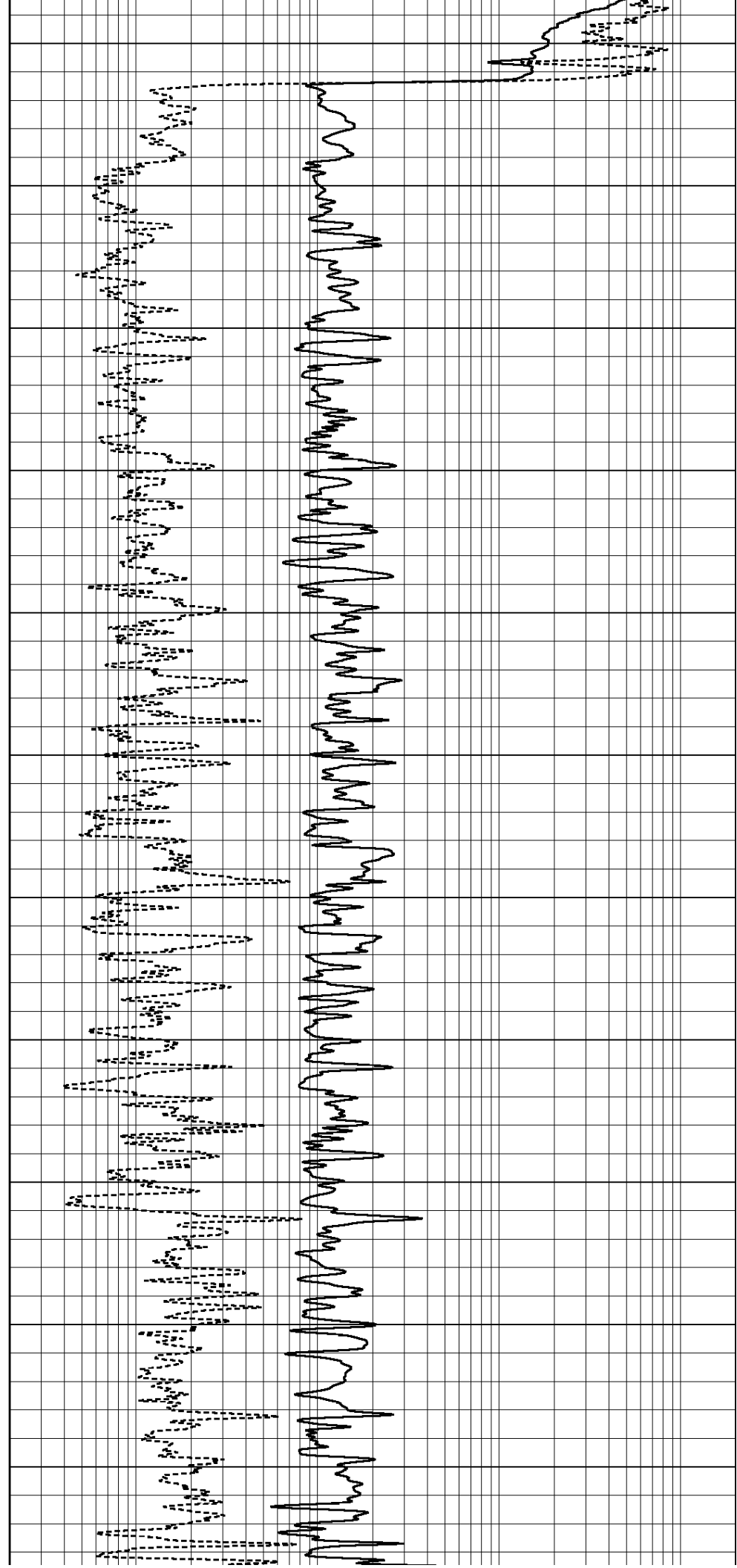
2000

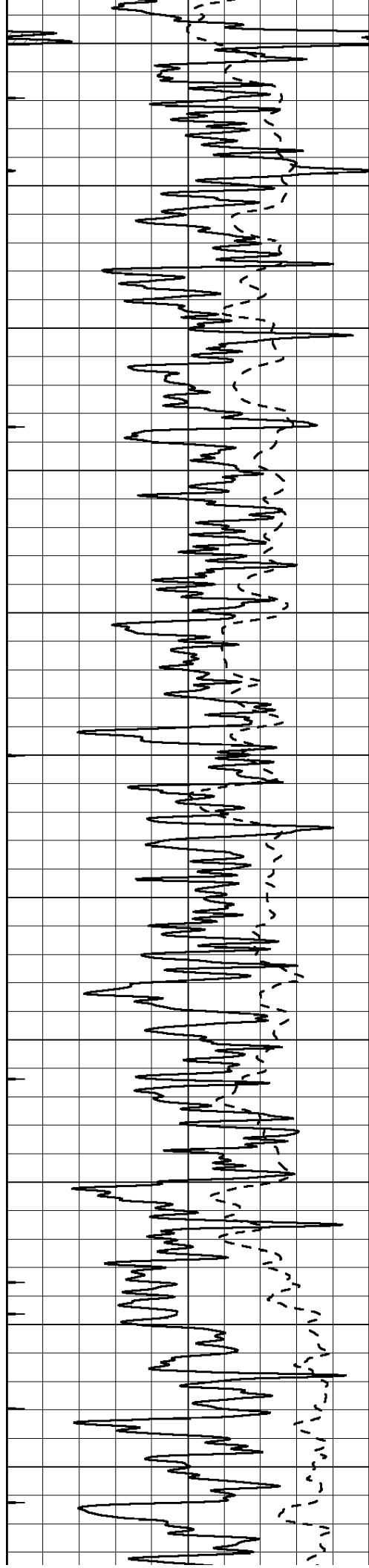
2050





2100  
2150  
2200  
2250  
2300  
2350  
2400  
2450  
2500  
2550  
2600





2650

2700

2750

2800

2850

2900

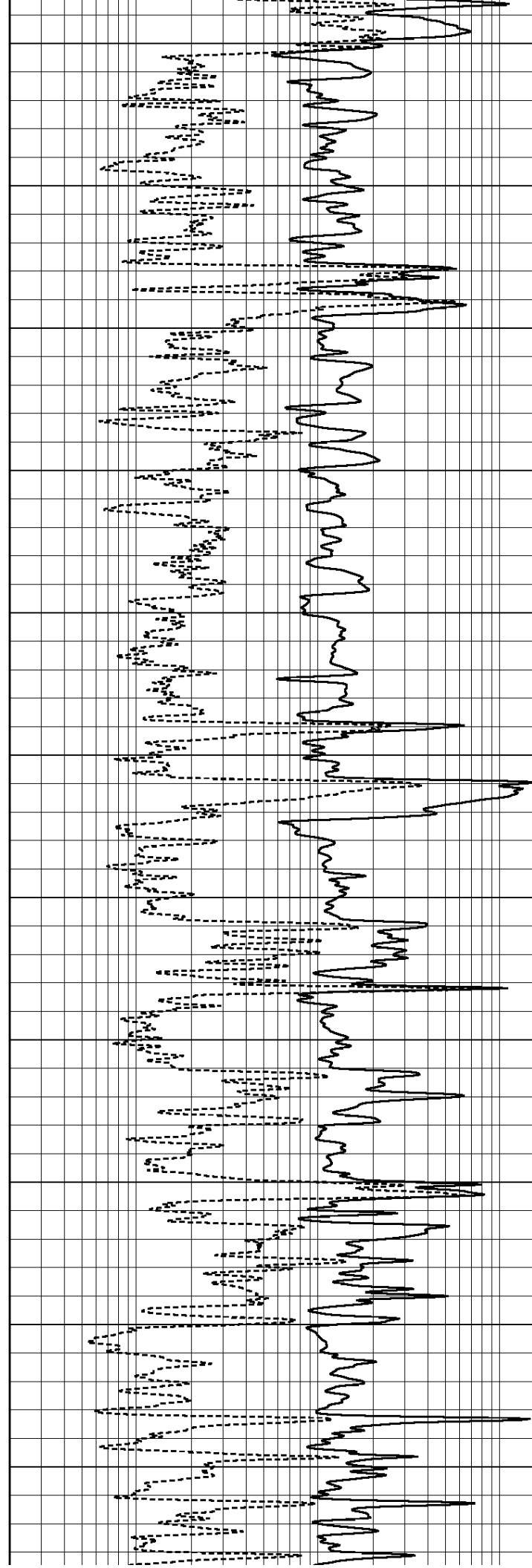
2950

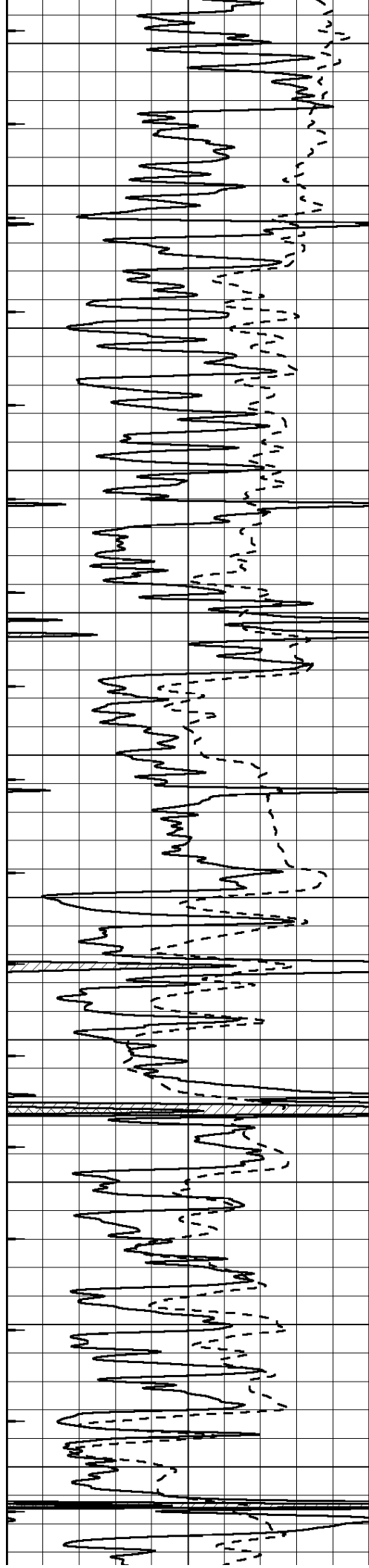
3000

3050

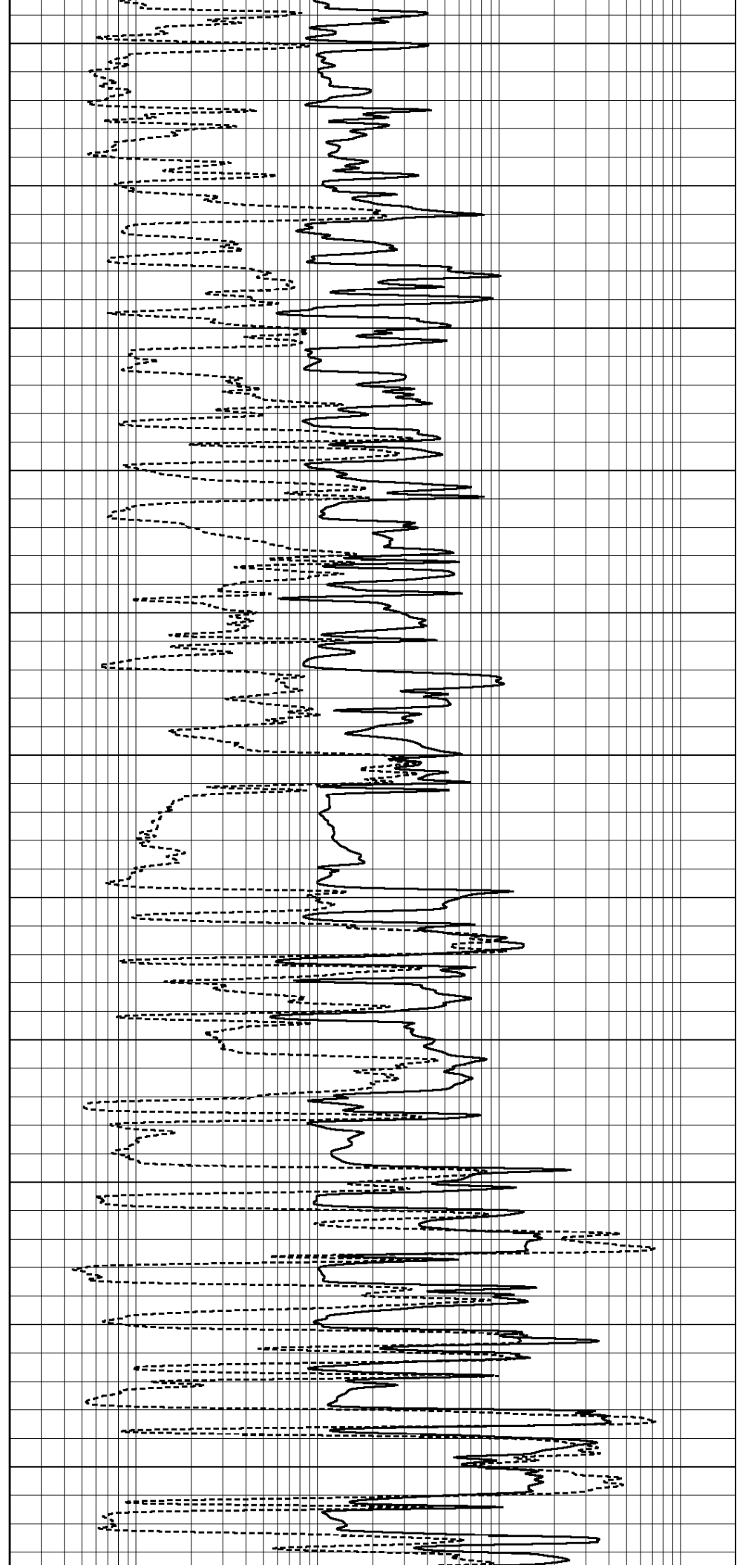
3100

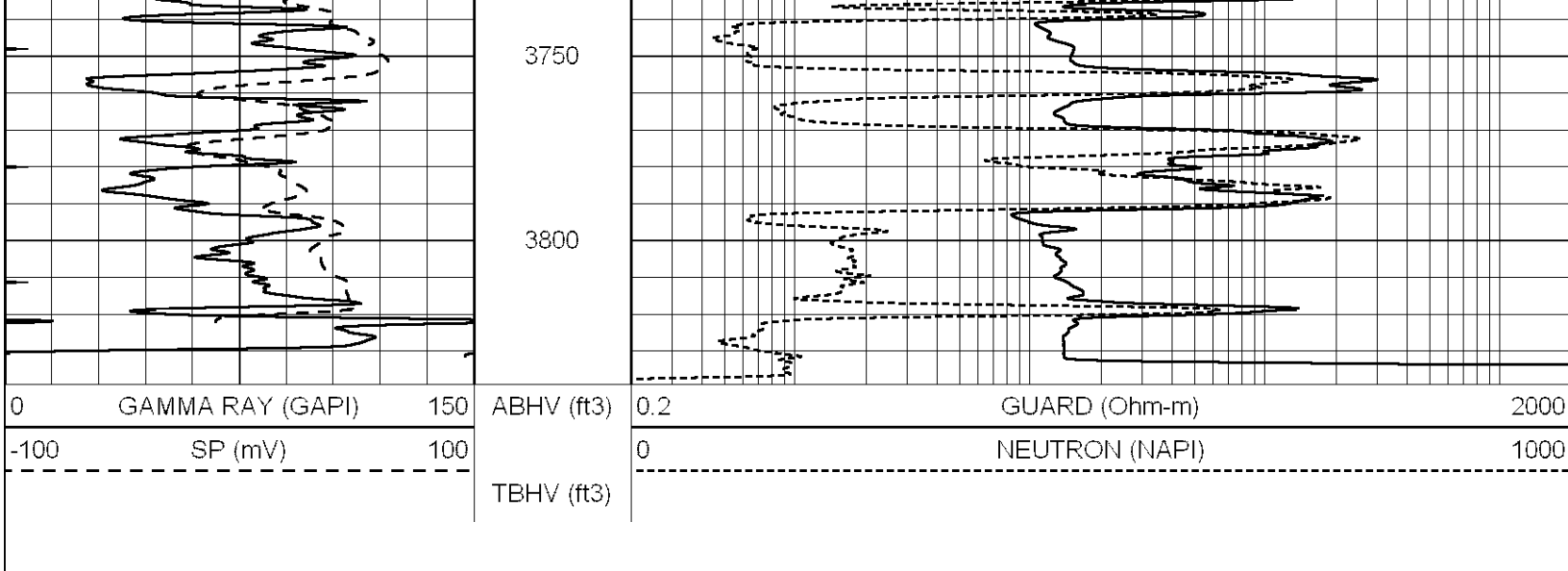
3150





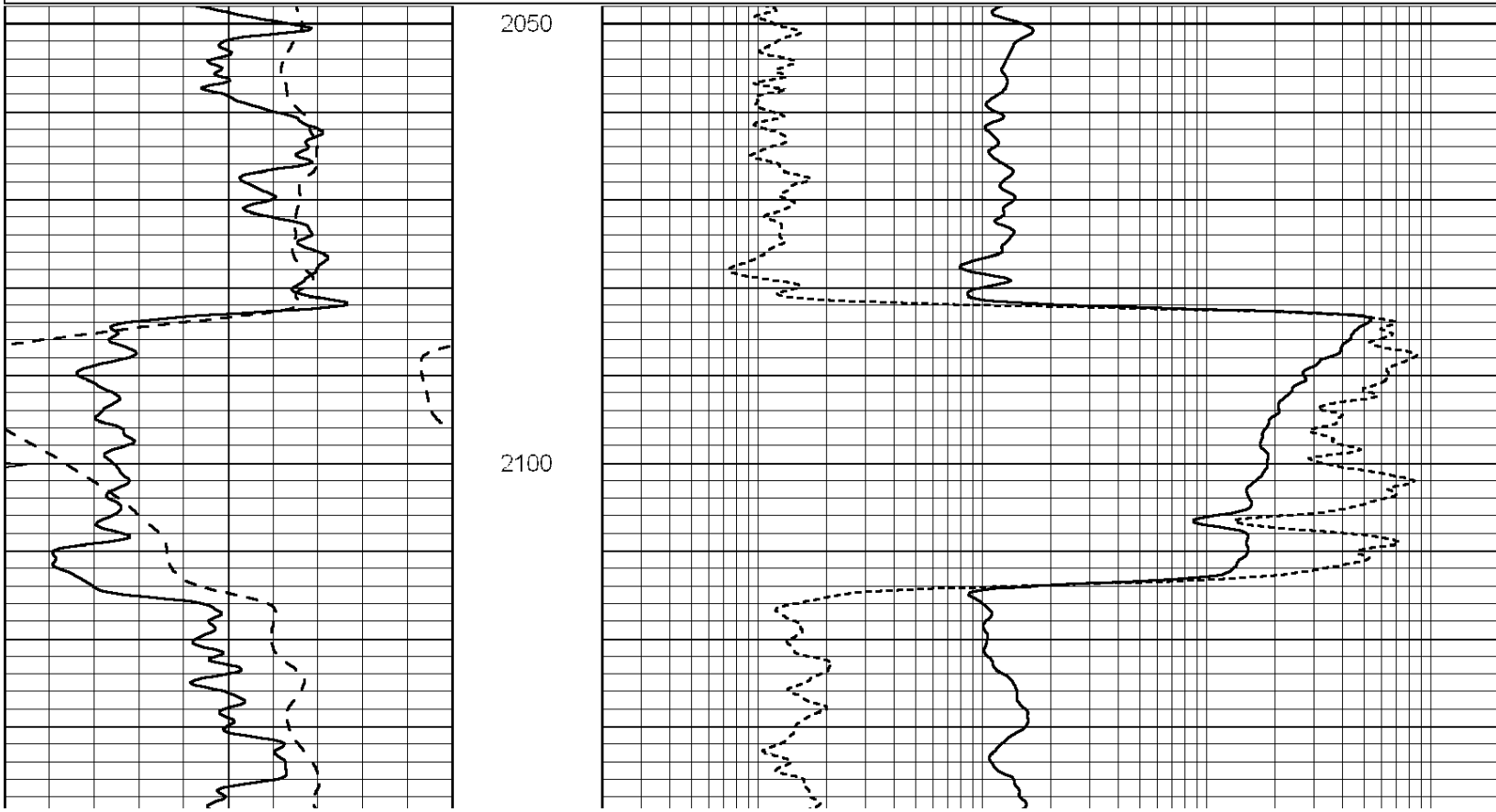
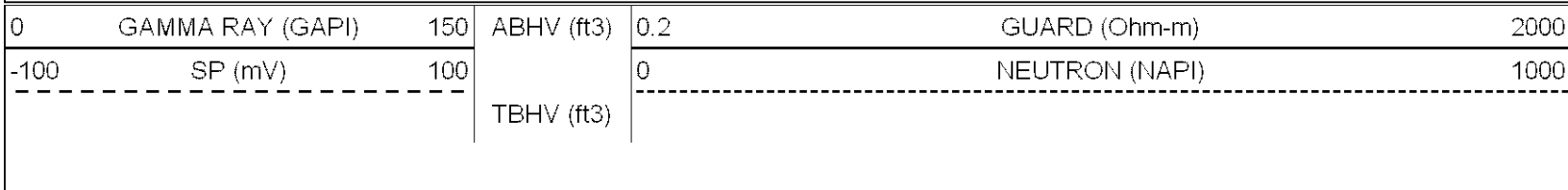
3200  
3250  
3300  
3350  
3400  
3450  
3500  
3550  
3600  
3650  
3700

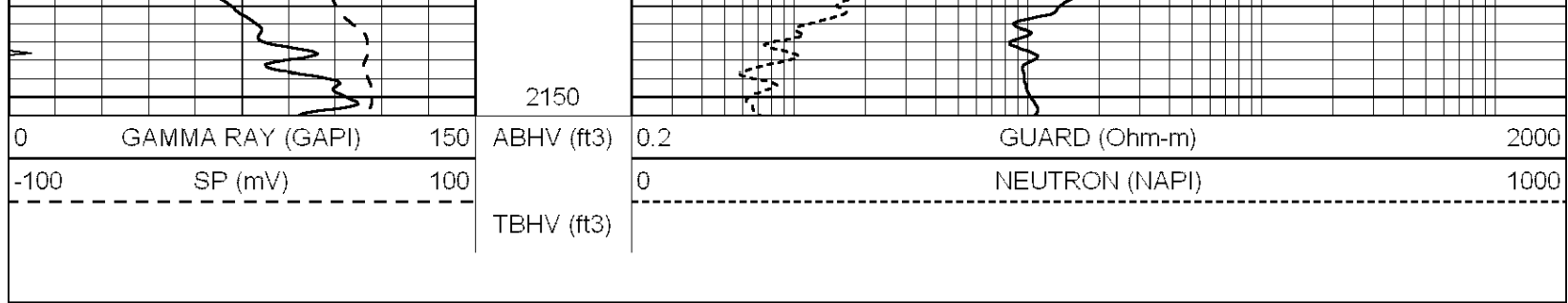




# MAIN SECTION

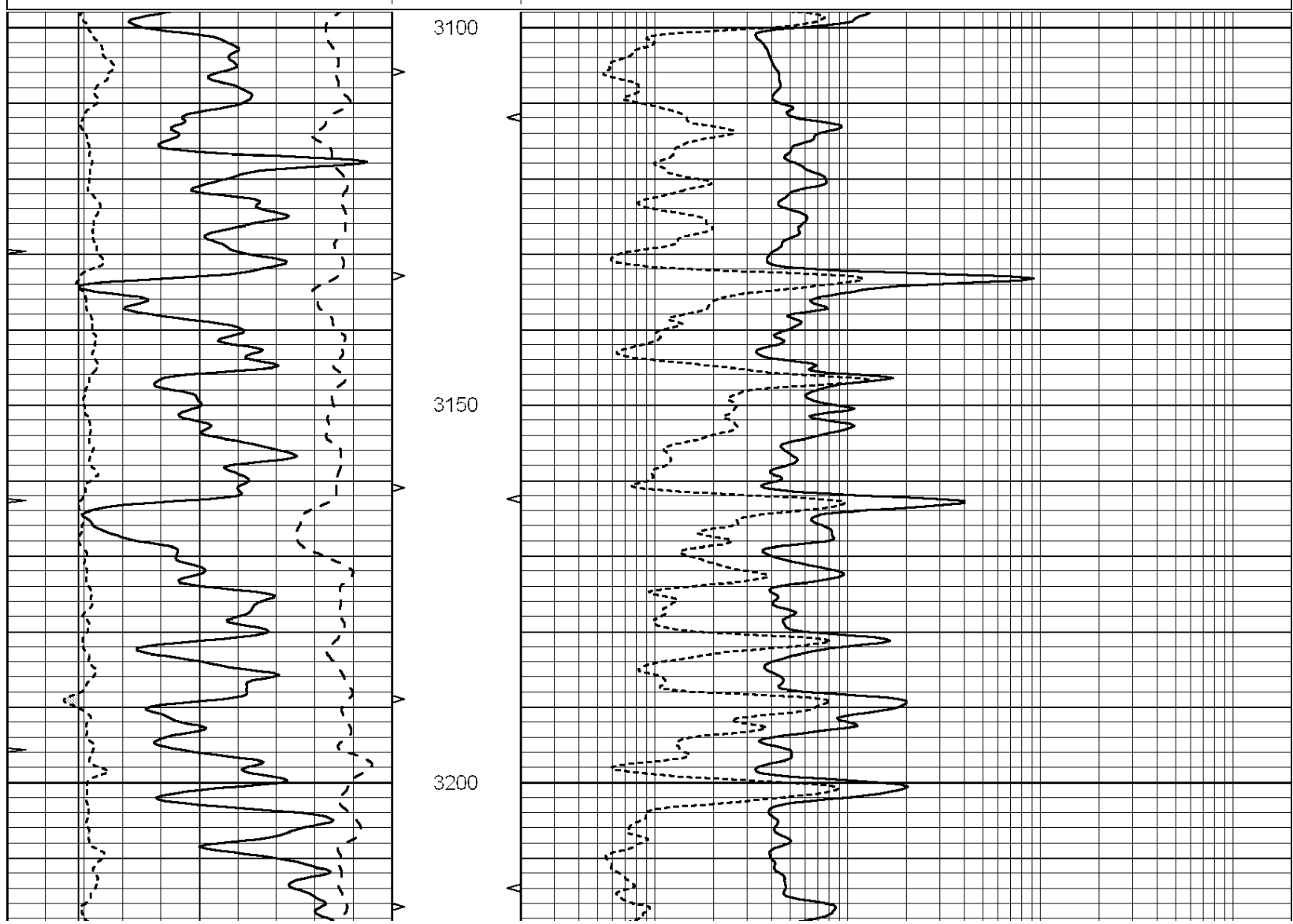
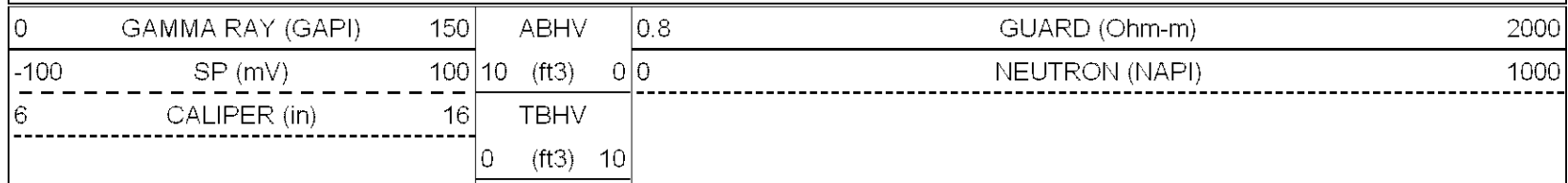
Database File: 011351rag.db  
 Dataset Pathname: pass4.2A  
 Presentation Format: rag2  
 Dataset Creation: Sat Jun 29 02:25:41 2013 by Calc Open-Cased 090629  
 Charted by: Depth in Feet scaled 1:240

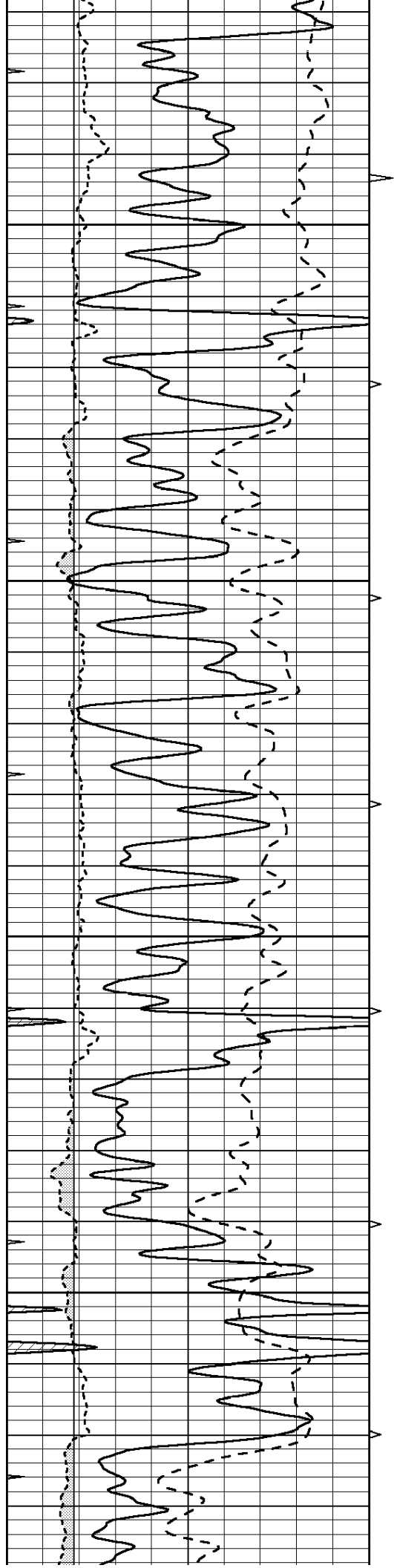




# MAIN SECTION

Database File: 011351rag.db  
 Dataset Pathname: pass4.2A  
 Presentation Format: \_rag  
 Dataset Creation: Sat Jun 29 02:25:41 2013 by Calc Open-Cased 090629  
 Charted by: Depth in Feet scaled 1:240



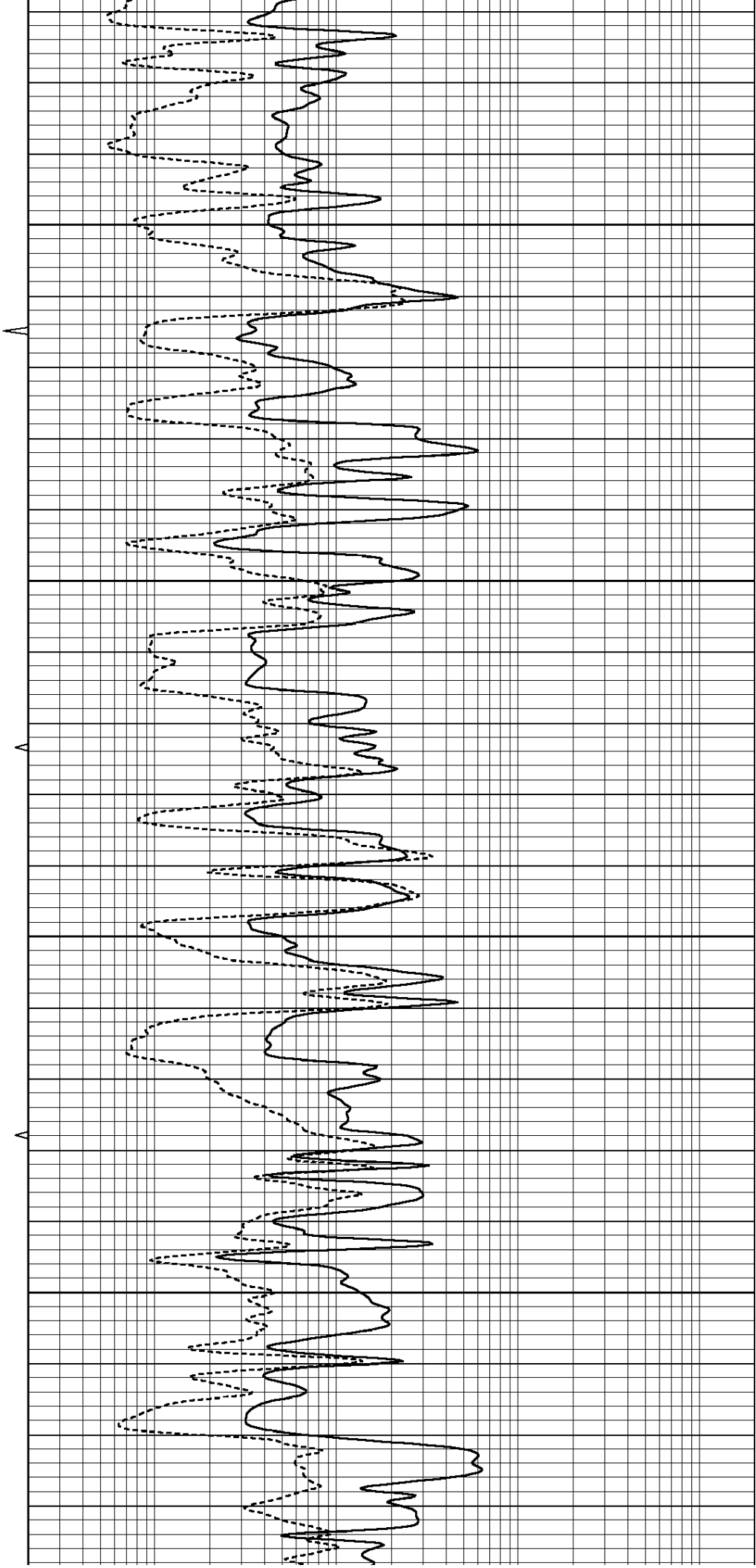


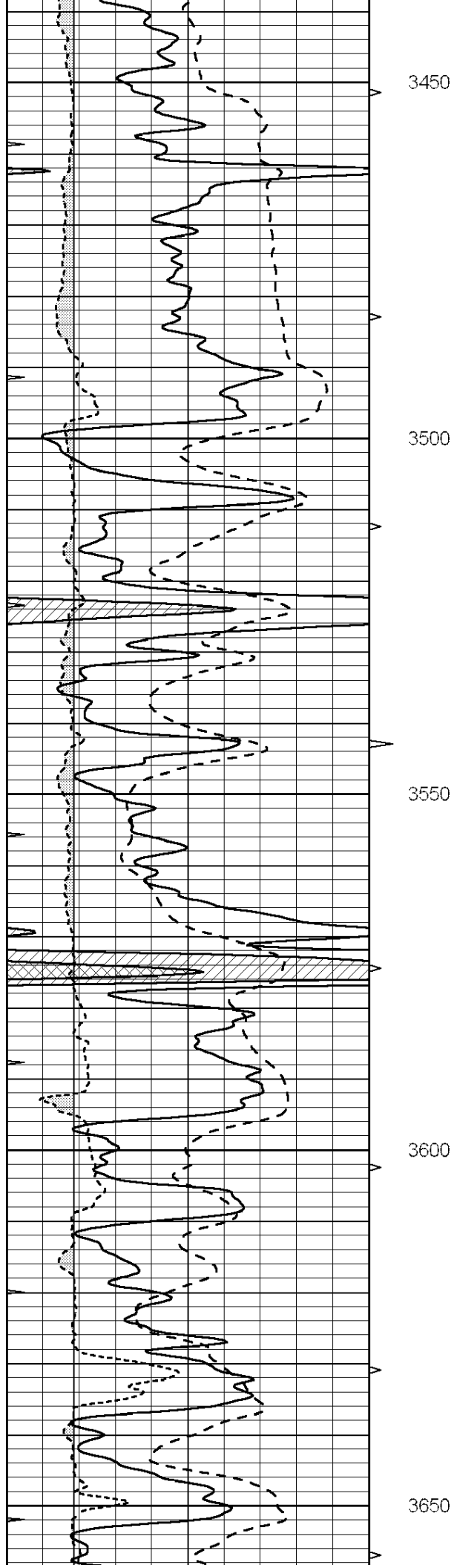
3250

3300

3350

3400





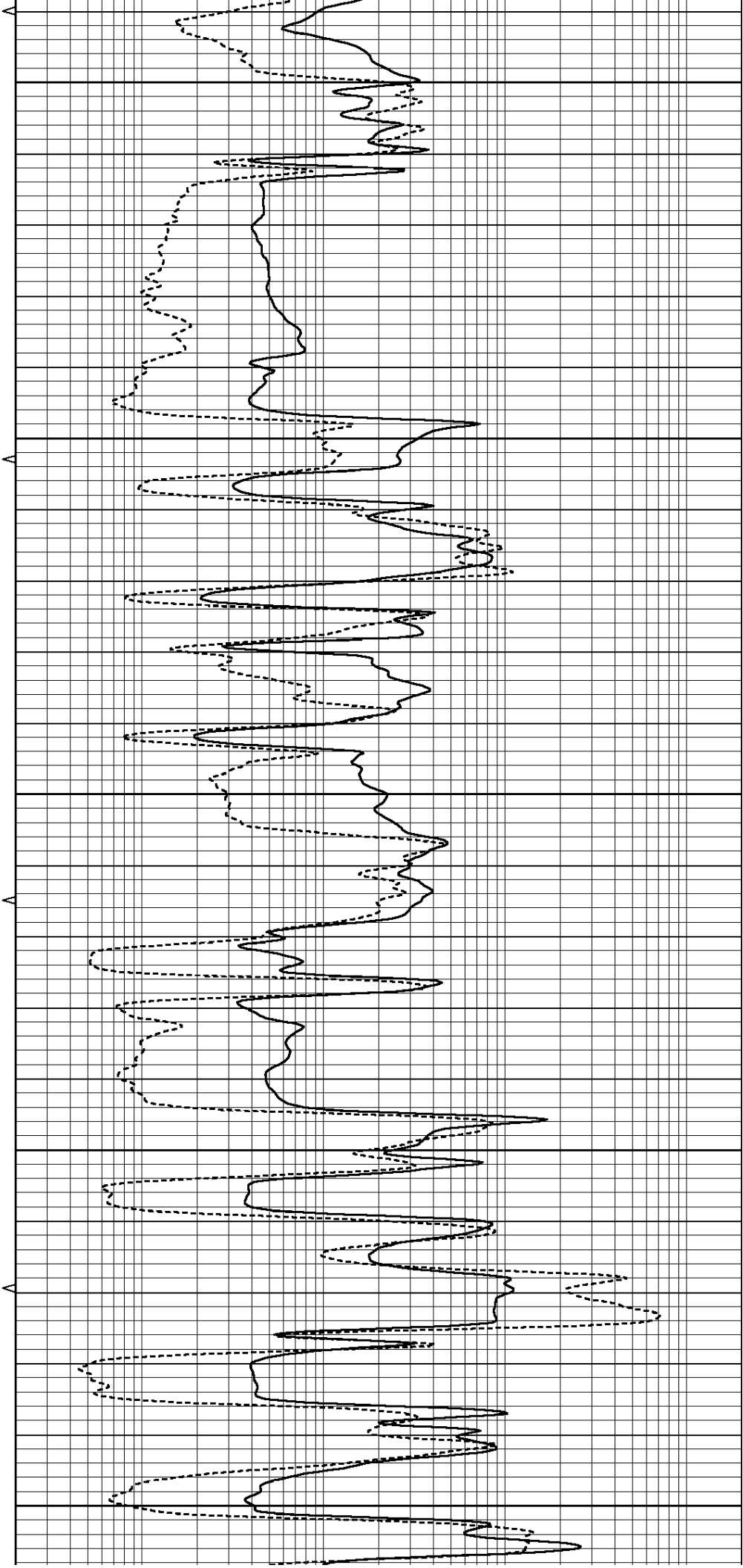
3450

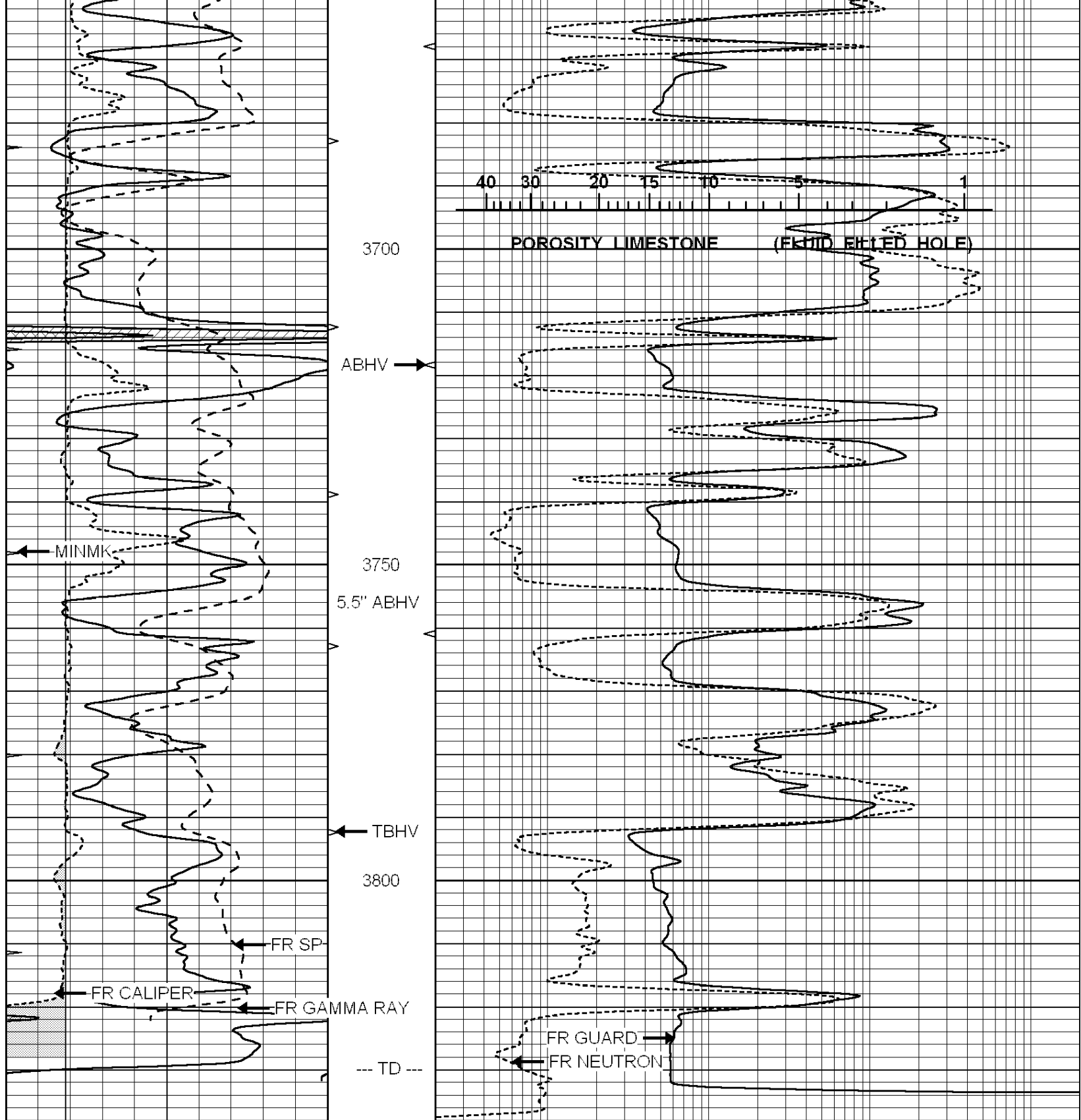
3500

3550

3600

3650



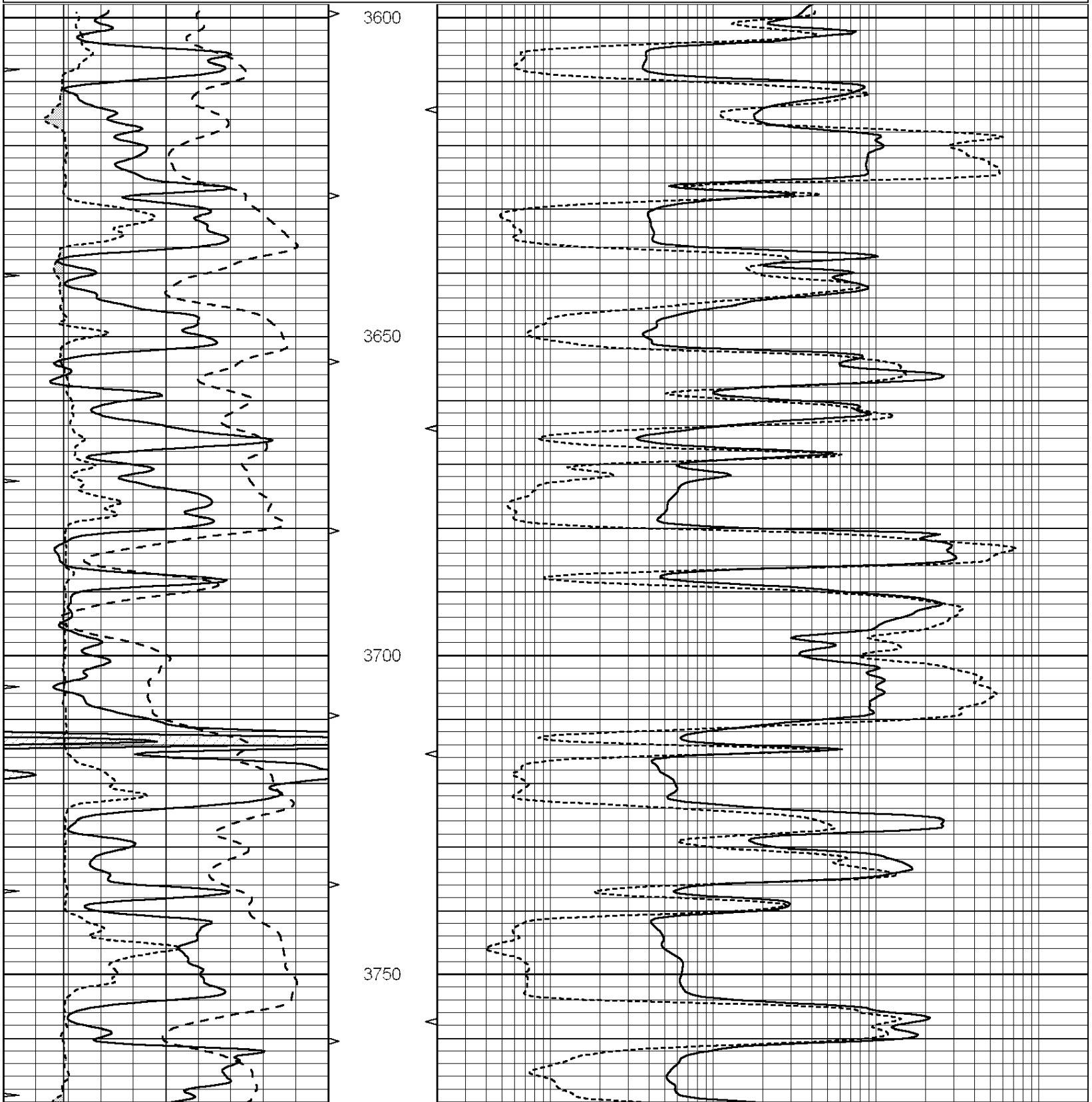


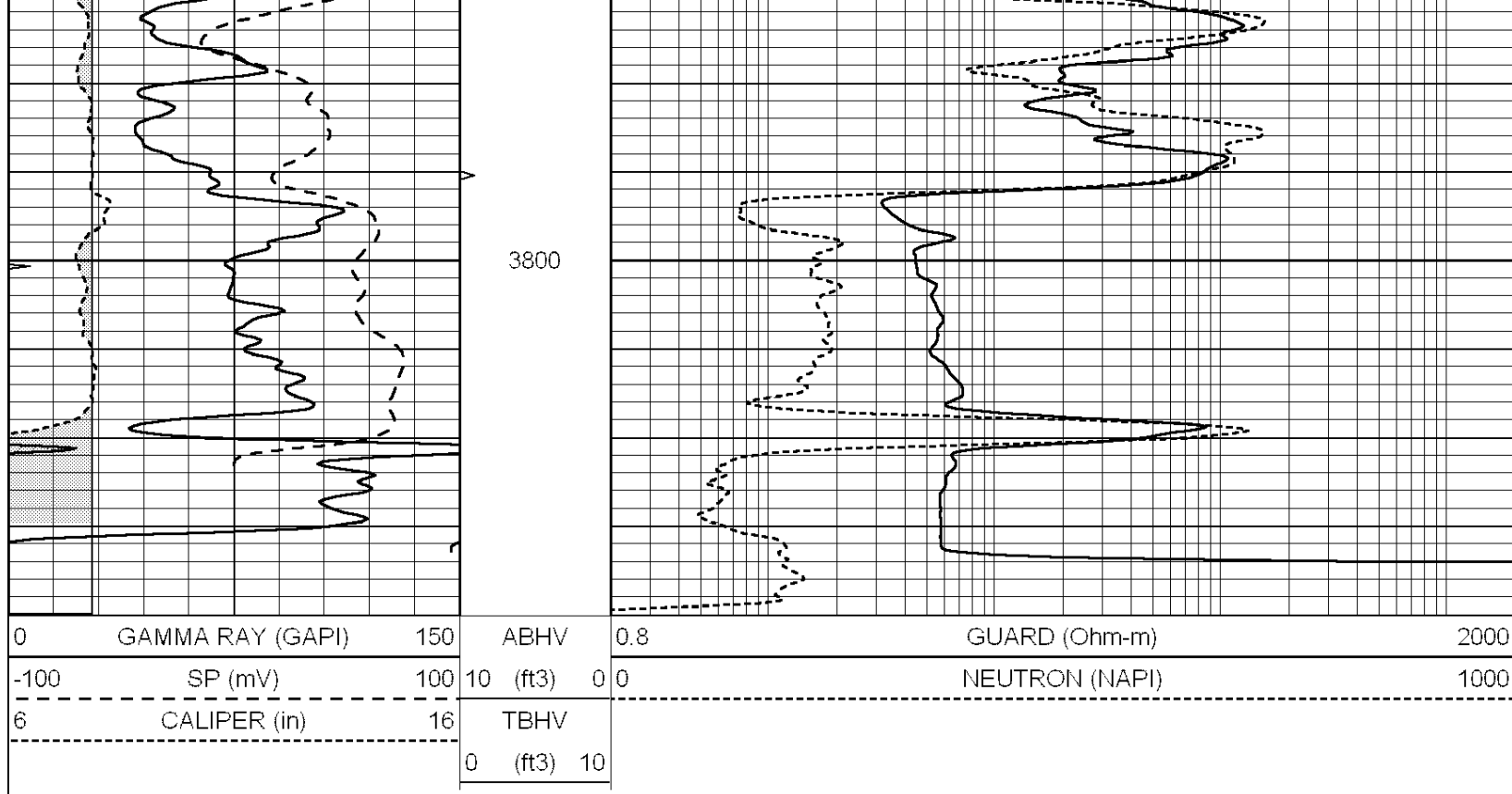
0	GAMMA RAY (GAPI)	150	ABHV	0.8	GUARD (Ohm-m)	2000
-100	SP (mV)	100	10 (ft3)	0 0	NEUTRON (NAPI)	1000
6	CALIPER (in)	16	TBHV			
			0 (ft3)	10		

**LOGGING & PRODUCTION SERVICES CO.**

Database File: 011351rag.db  
 Dataset Pathname: pass3.2A  
 Presentation Format: \_rag  
 Dataset Creation: Sat Jun 29 02:29:16 2013  
 Charted by: Depth in Feet scaled 1:240

0	GAMMA RAY (GAPI)	150	ABHV	0.8	GUARD (Ohm-m)	2000
-100	SP (mV)	100	10 (ft3)	0	NEUTRON (NAPI)	1000
6	CALIPER (in)	16	TBHV			
			0 (ft3)	10		





### Calibration Report

Database File: 011351rag.db  
 Dataset Pathname: pass4.2A  
 Dataset Creation: Sat Jun 29 02:25:41 2013 by Calc Open-Cased 090629

### Neutron Calibration Report

Serial Number: RAG1  
 Tool Model: RAG  
 Performed: Sat Jun 29 01:58:55 2013

Calibrator Values: 0 1 NAPI  
 Calibrator Readings: 0 1 cps

Sensitivity: 0.83 NAPI/cps

### Micro Spherically Focused Log Calibration Report

Serial-Model: RAG1-A  
 Performed: Sat Jun 29 01:58:40 2013

	Readings			References			Results	
	Low	High		Low	High		m	b
Conductivity	0.0110	0.9000	V	10.0000	1000.0000	mmho	500.0000	-1.5000
Caliper	0.2723	0.3535	V	7.6000	14.0000	in	78.8585	-13.8760

### Gamma Ray Calibration Report

Serial Number: RAG1  
 Tool Model: RAG  
 Performed: Sat Jun 29 01:58:18 2013

Calibrator Value: 1.0 GAPI

Background Reading: 0.9 cps  
 Calibrator Reading: 1.0 cps

Sensitivity:

0.9000

GAPI/cps