



**COMPLETION
& PRODUCTION
SERVICES CO.**

**SONIC
LOG**

Company LOTUS OPERATING CO., LLC.
Well RM STERLING #6
Field STRANATHAN
County BARBER
State KANSAS

Company LOTUS OPERATING COMPANY, LLC.
Well RM STERLING #6
Field STRANATHAN
County BARBER State KANSAS

Location: API # : 15-007-24010-0000

SEC 35 TWP 34S RGE 13W
Permanent Datum GROUND LEVEL Elevation 1455
Log Measured From KELLY BUSHING 13' A.G.L.
Drilling Measured From KELLY BUSHING
Other Services
CDL/CNL/PE
DIL/MEL
Elevation
K.B. 1468
D.F. 1466
G.L. 1455

Date	5/5/13		
Run Number	TWO		
Depth Driller	5600		
Depth Logger	5601		
Bottom Logged Interval	5587		
Top Log Interval	3600		
Casing Driller	10 3/4"@261'		
Casing Logger	261'		
Bit Size	7 7/8"		
Type Fluid in Hole	CHEMICAL MUD	CHLORIDES 3,000 PPM	
Density / Viscosity	9.5/60		
pH / Fluid Loss	11.0/9.0		
Source of Sample	FLOWLINE		
Rim @ Meas. Temp	0.75@89F		
Rmf @ Meas. Temp	0.56@89F		
Rmc @ Meas. Temp	0.90@89F		
Source of Rmf / Rmc	MEASUREMENT		
Rim @ BHT	0.51@130F		
Time Circulation Stopped	2 HOURS		
Time Logger on Bottom			
Maximum Recorded Temperature	130F		
Equipment Number	4854		
Location	HAYS, KANSAS		
Recorded By	JEFF GRONEMEG		
Witnessed By	TIM HELLMAN		

<<< Fold Here >>>

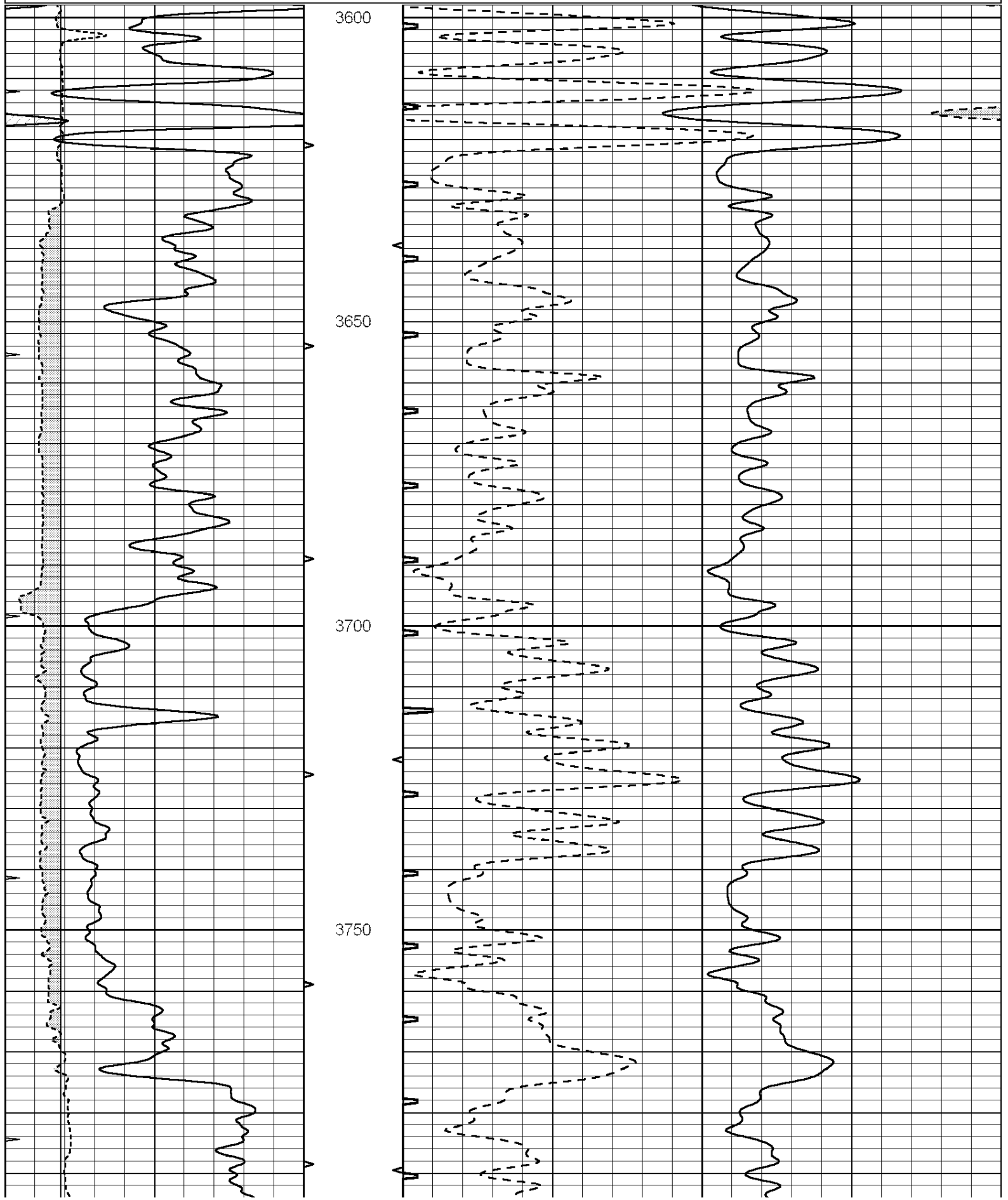
All interpretations are opinions based on inferences from electrical or other measurements and we cannot and do not guarantee the accuracy or correctness of any interpretation, and we shall not, except in the case of gross or willful negligence on our part, be liable or responsible for any loss, costs, damages, or expenses incurred or sustained by anyone resulting from any interpretation made by any of our officers, agents or employees. These interpretations are also subject to our general terms and conditions set out in our current Price Schedule.

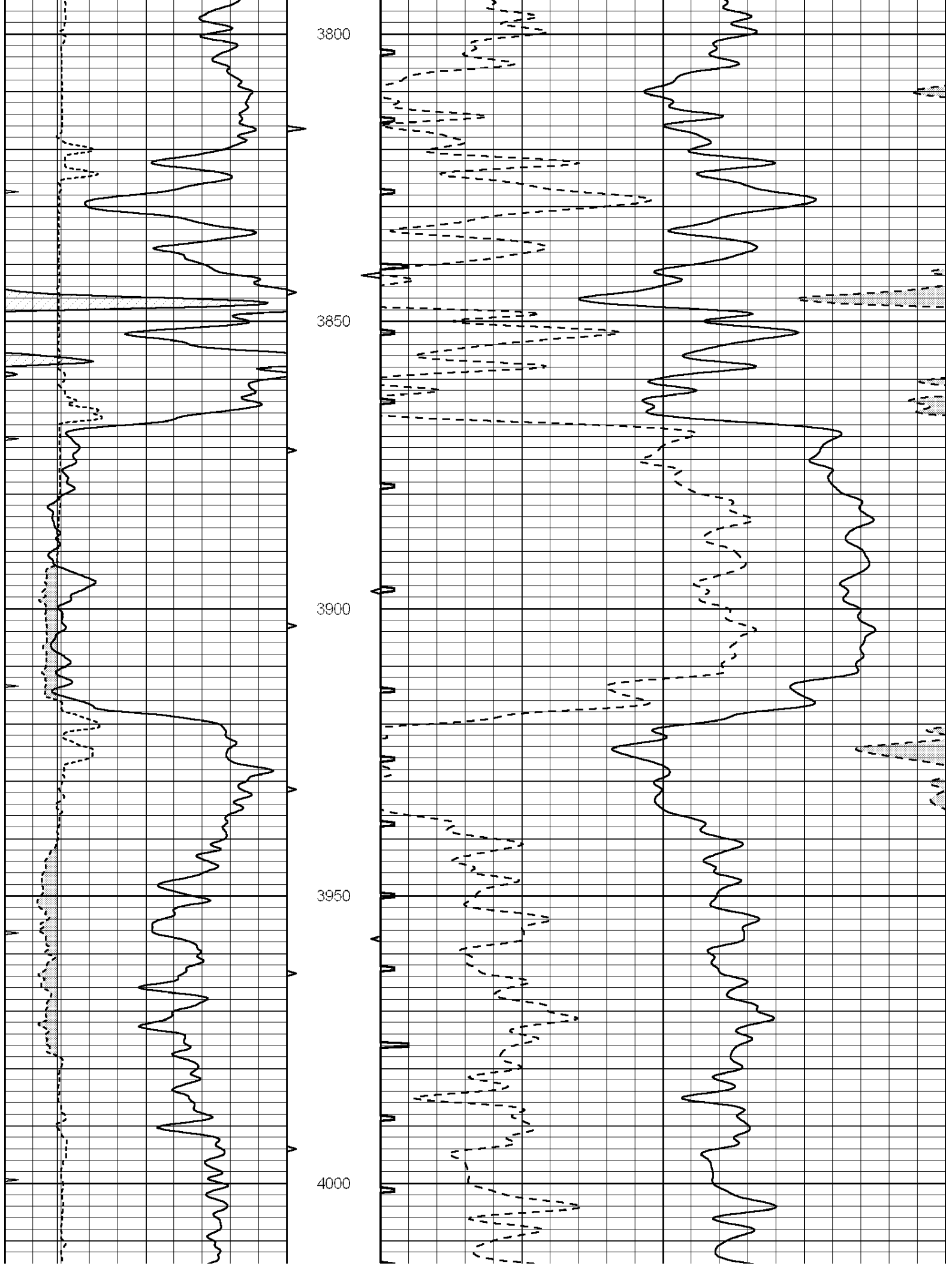
Comments

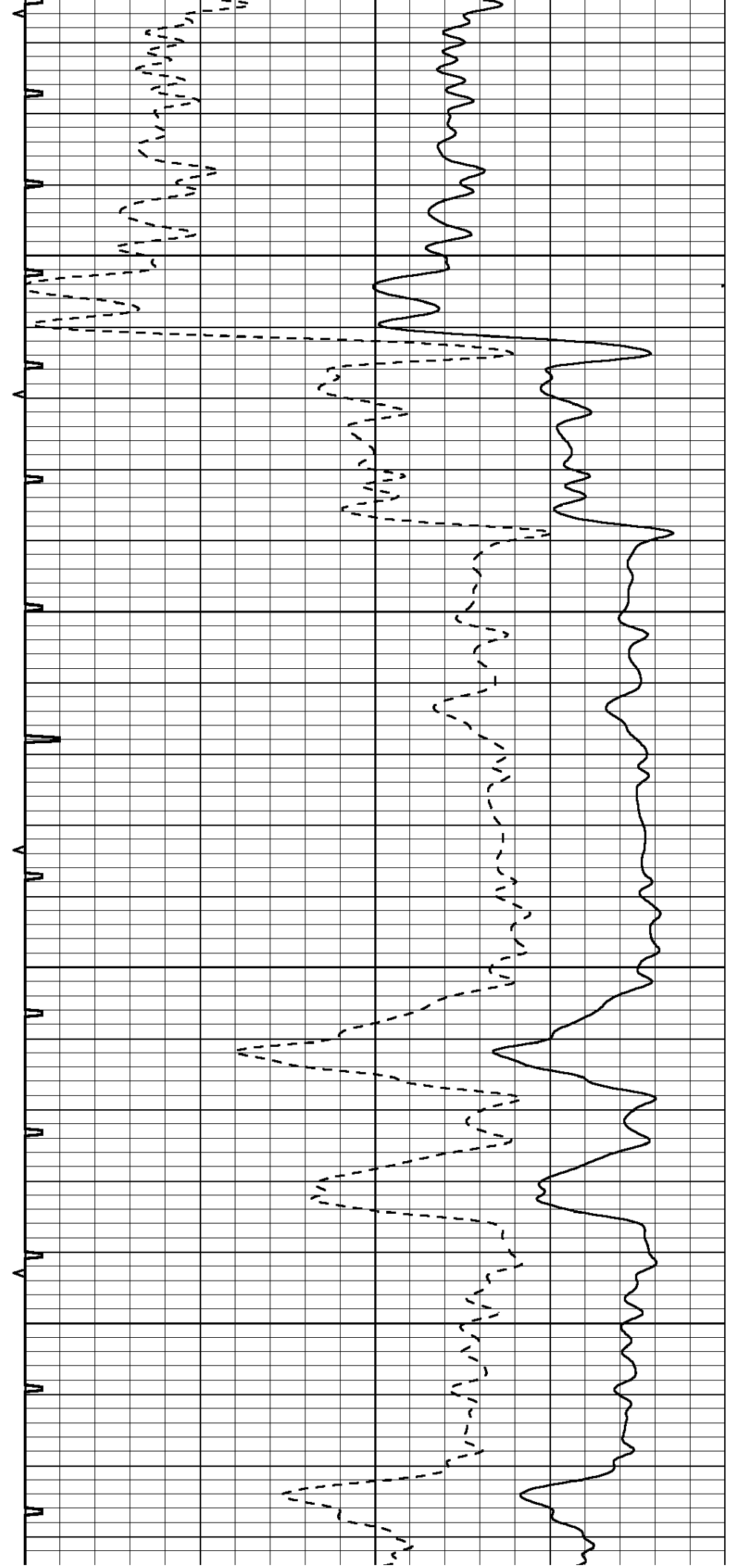
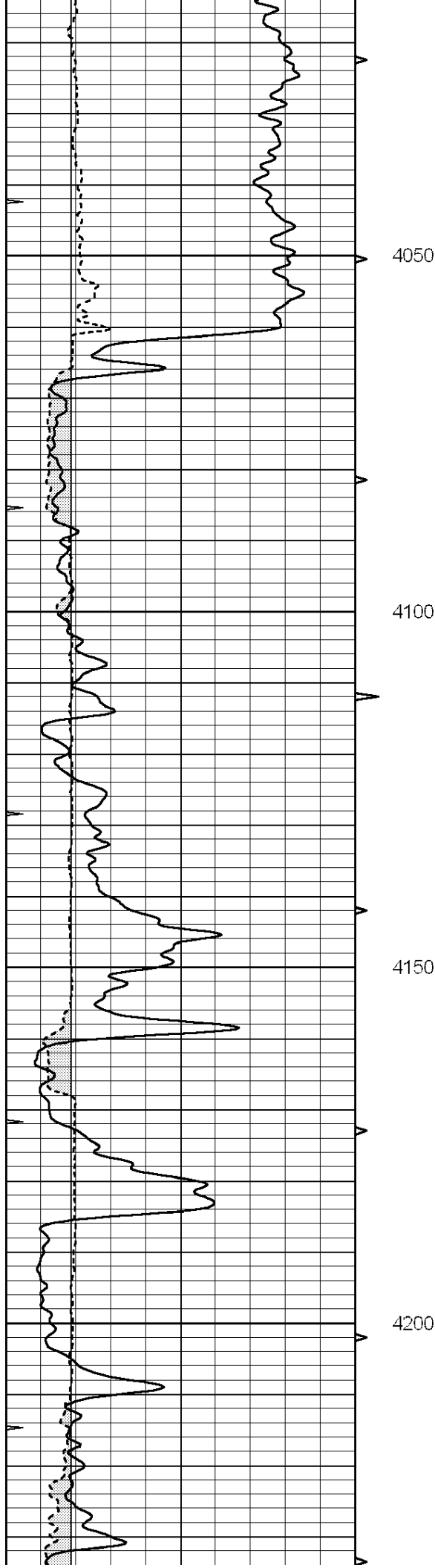
THANK YOU FOR USING "NABORS" HAYS, KANSAS (785) 628-6395
DIRECTIONS
HARDTNER, KS - 2 1/2 MILES WEST FROM STOP SIGN - 2 MILES NORTH
WEST INTO

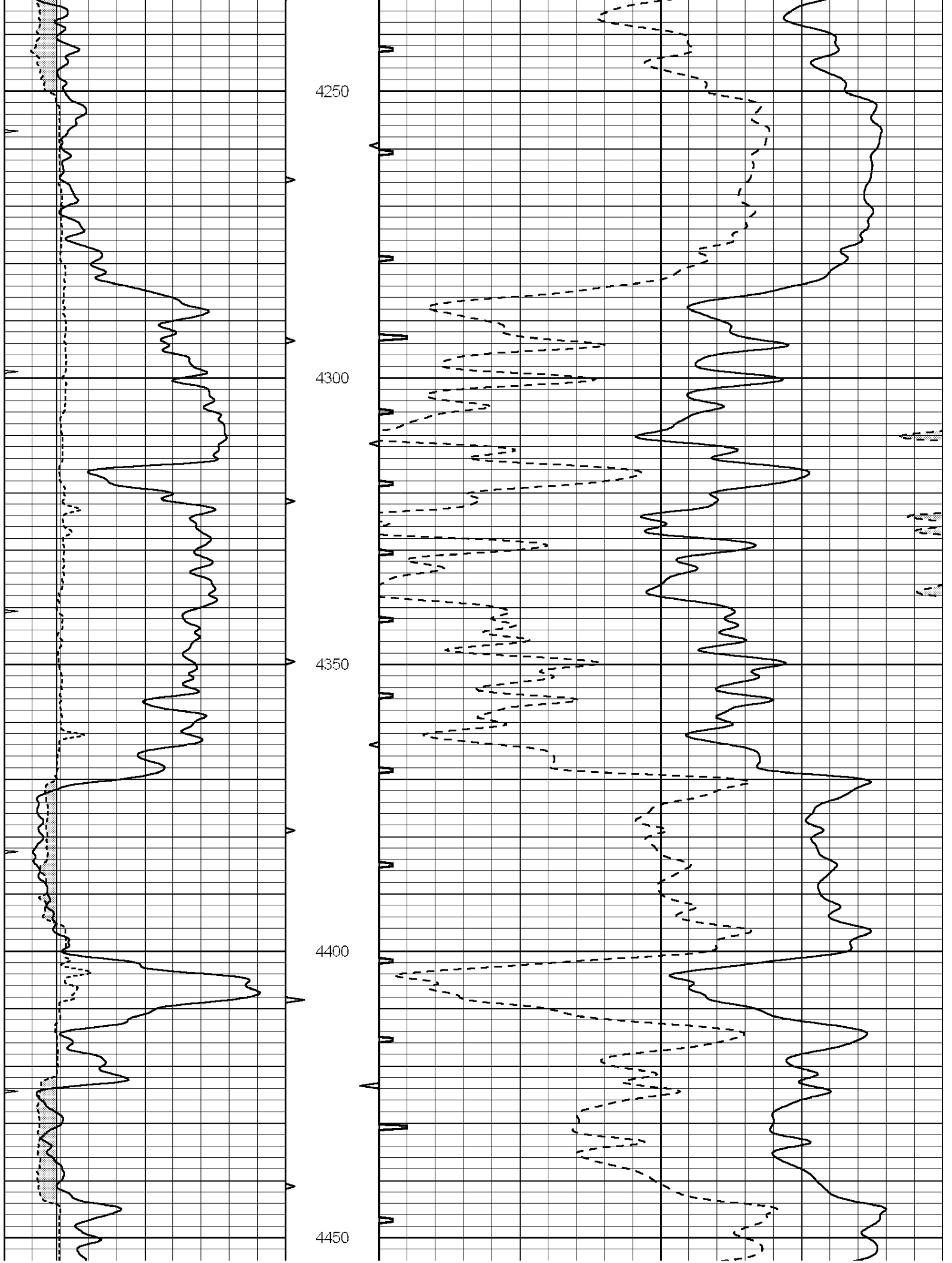
Database File: 010301pe.db
Dataset Pathname: pass7.1
Presentation Format: _slt
Dataset Creation: Sun May 05 21:46:12 2013
Charted by: Depth in Feet scaled 1:240

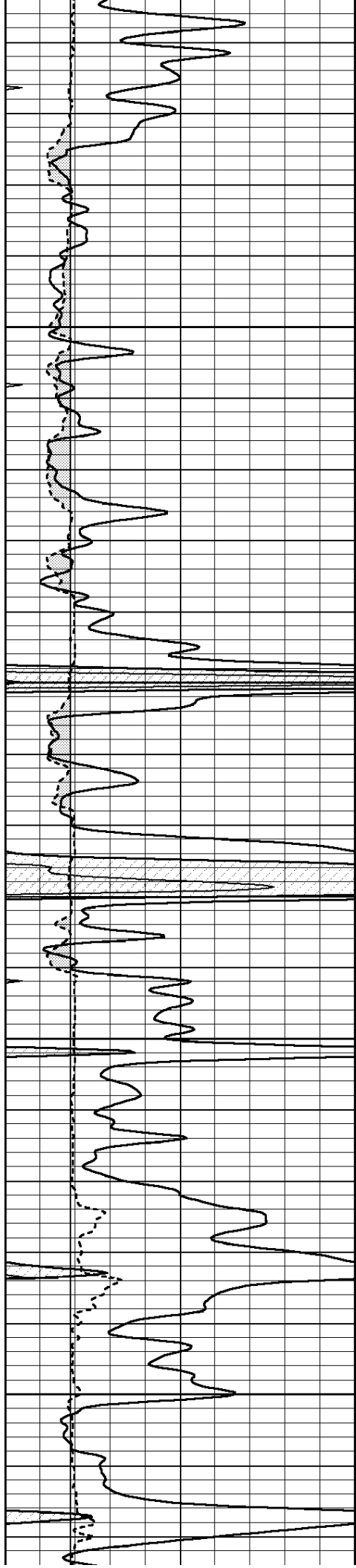
0	GAMMA RAY (GAPI)	150	ABHV	140	DELTA TIME (usec/ft)	40
6	CALIPER (in)	16	10 (ft3) 0	30	SONIC POROSITY (pu)	-10
0	MINMK	20	TBHV	0	ITT (msec)	20
			0 (ft3) 10			









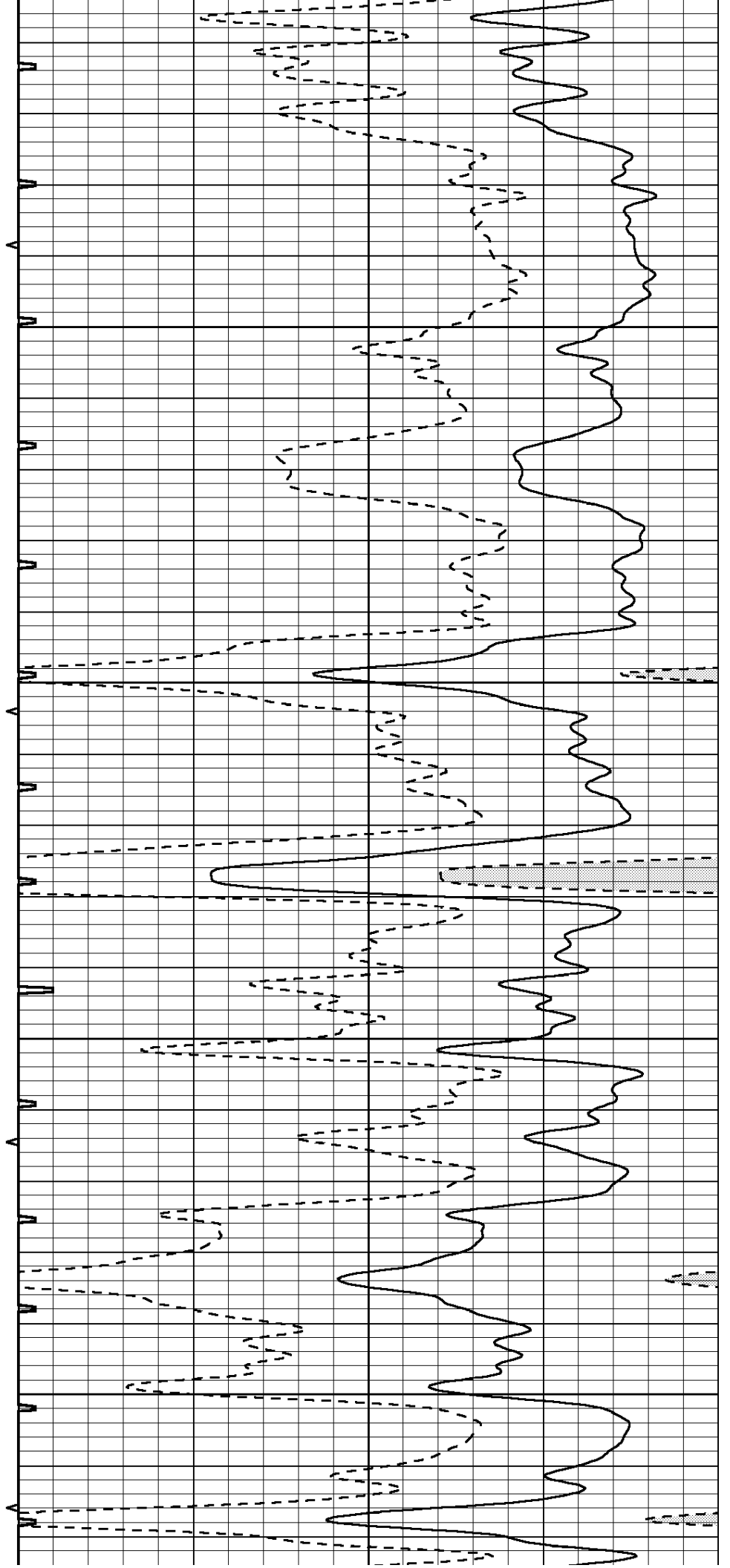


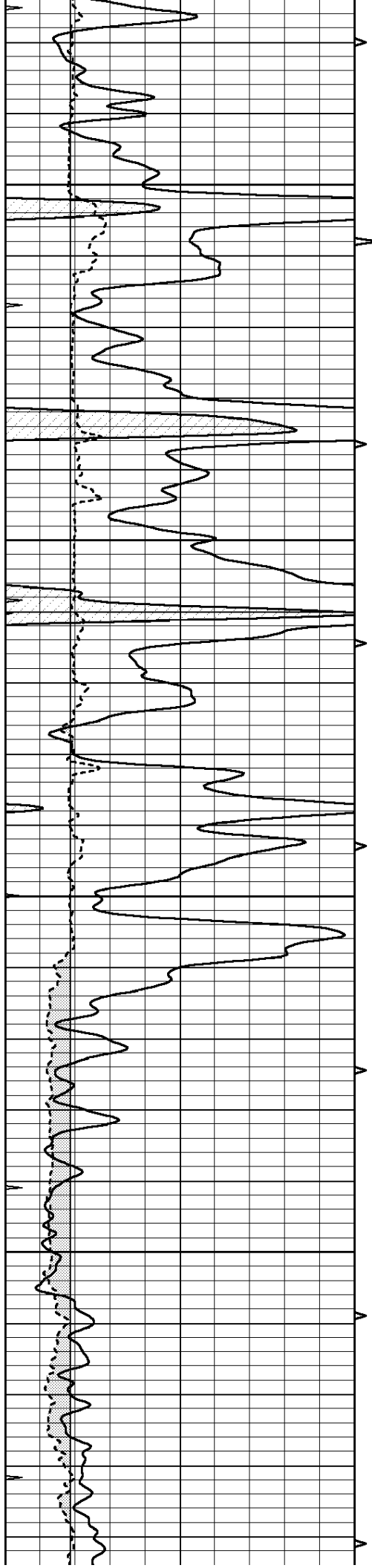
4500

4550

4600

4650



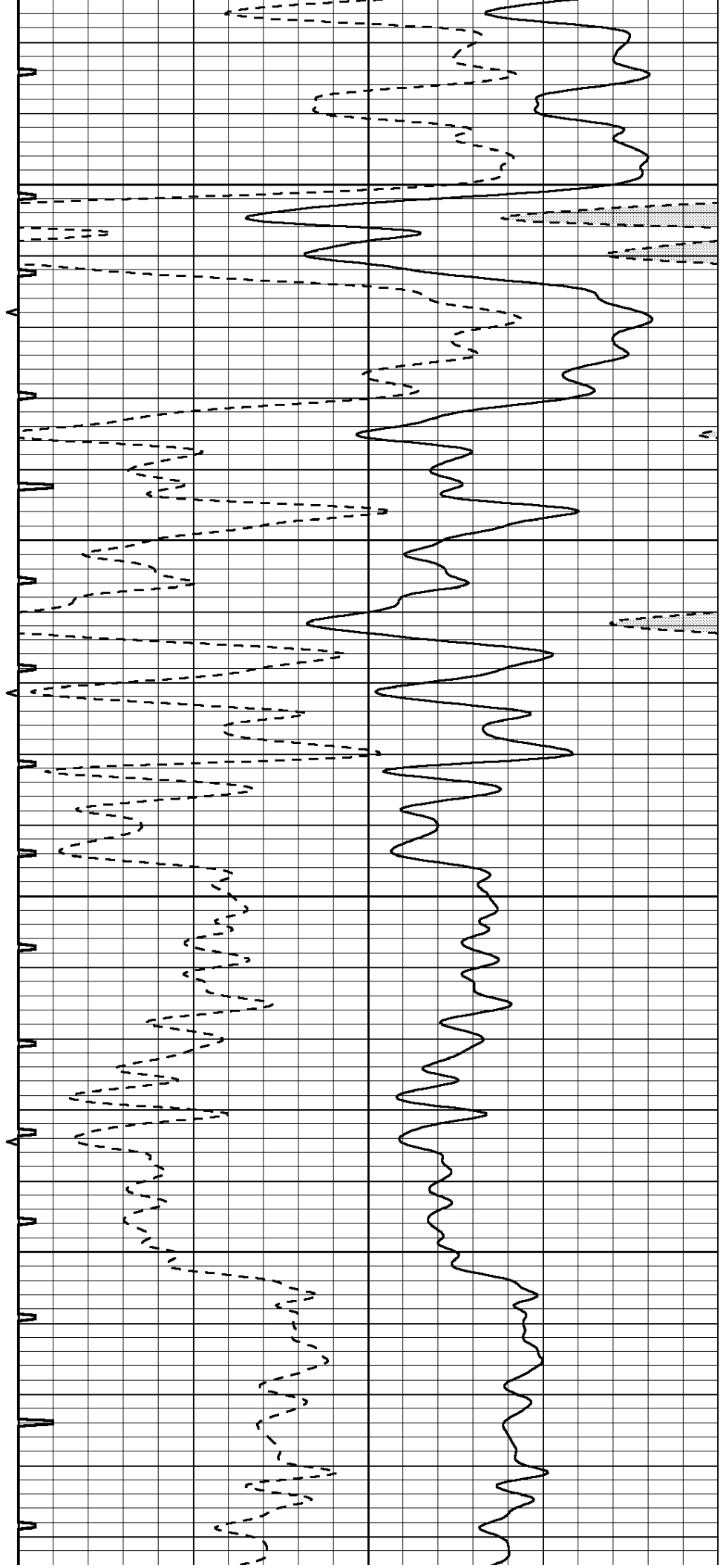


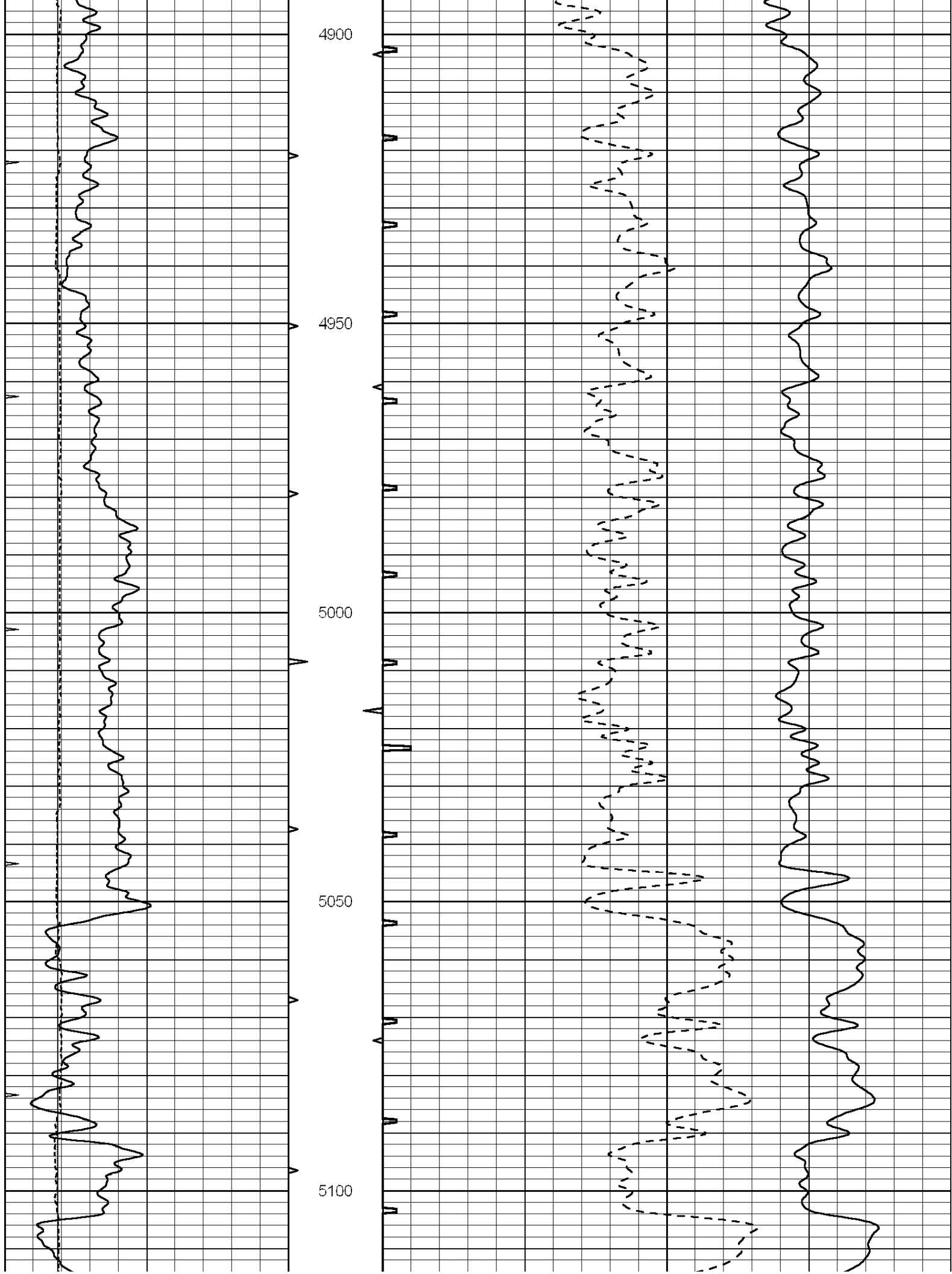
4700

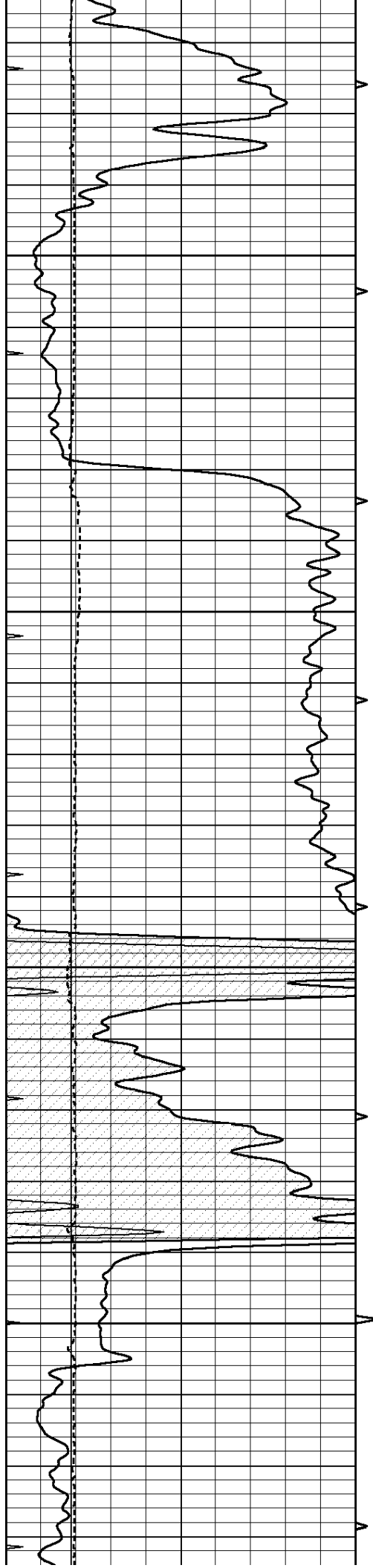
4750

4800

4850





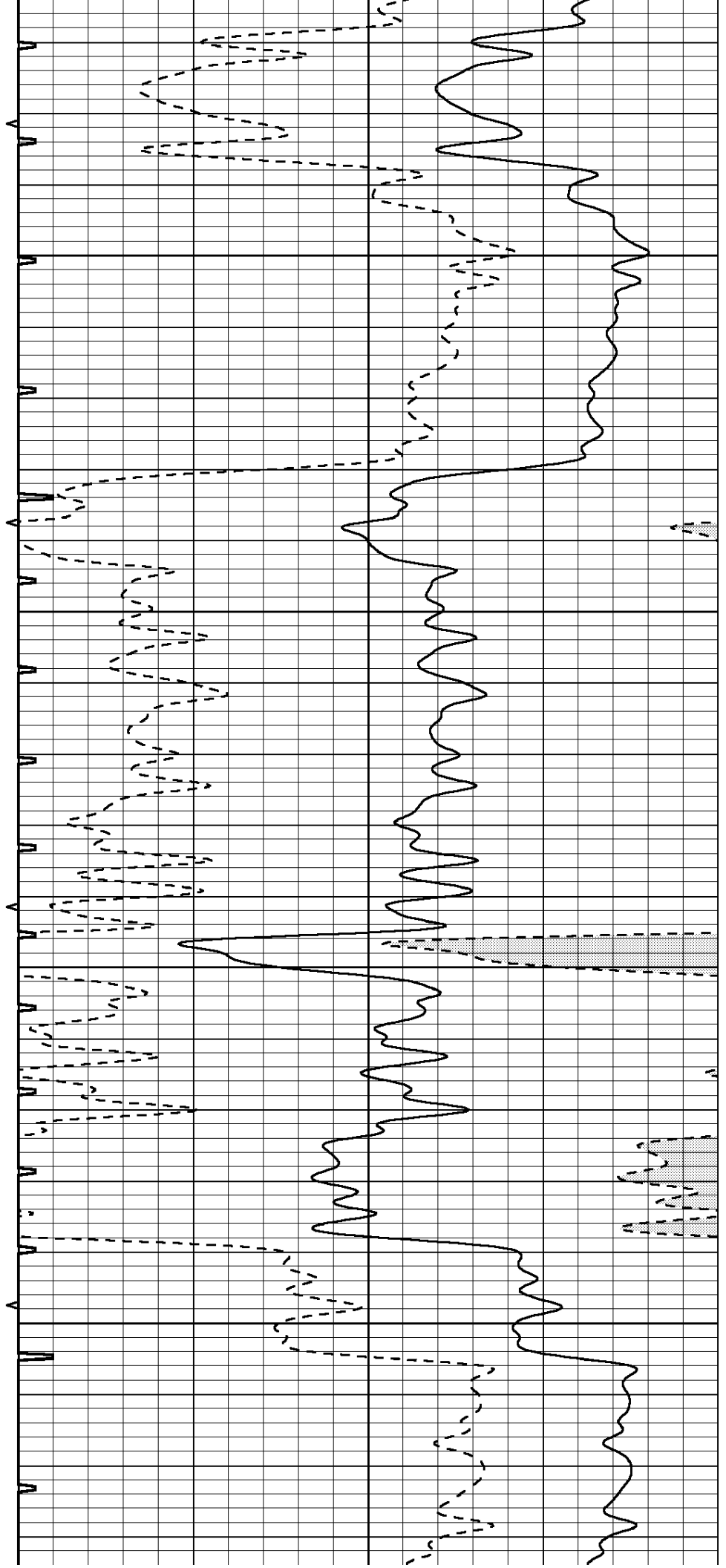


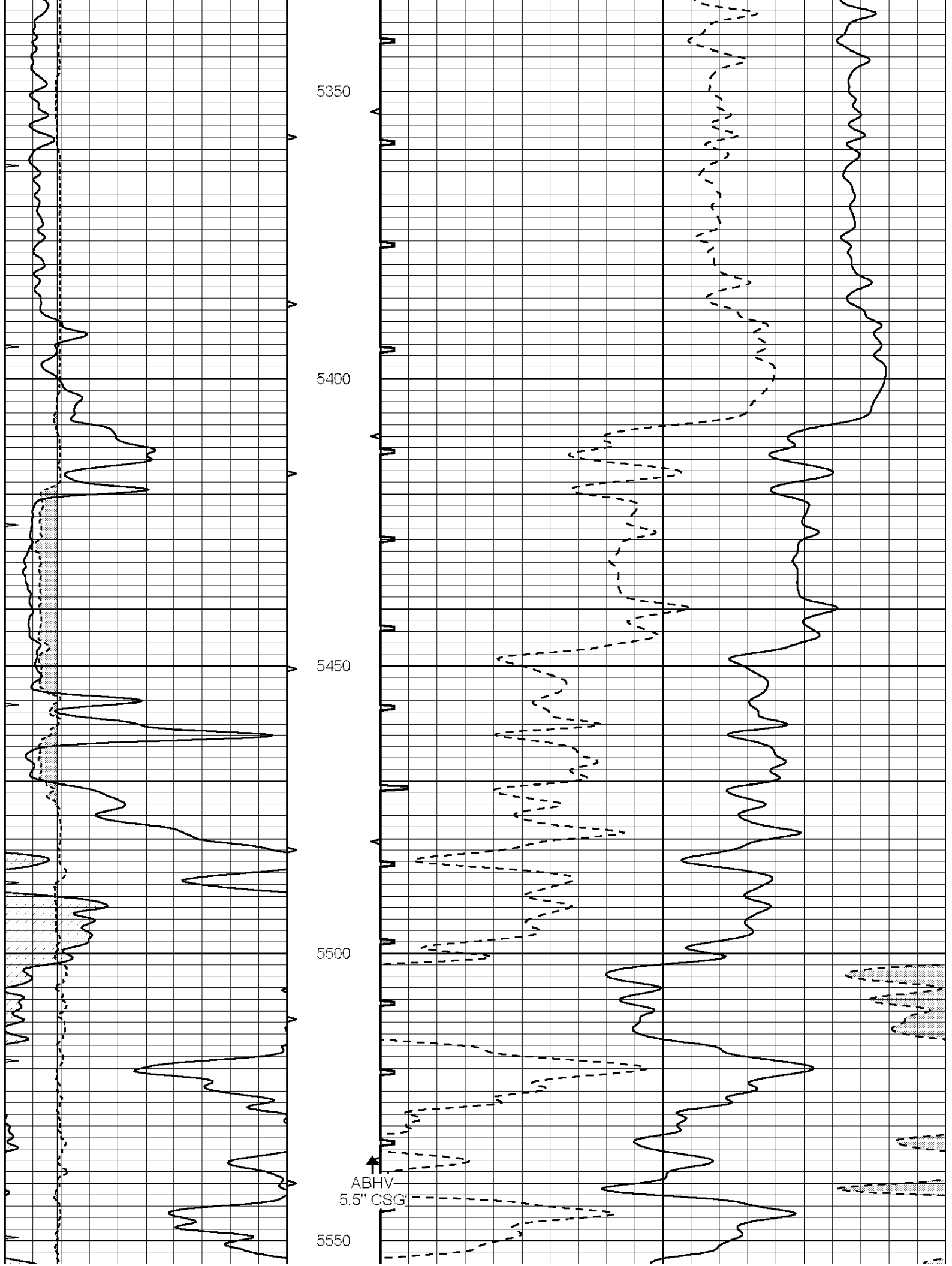
5150

5200

5250

5300





5350

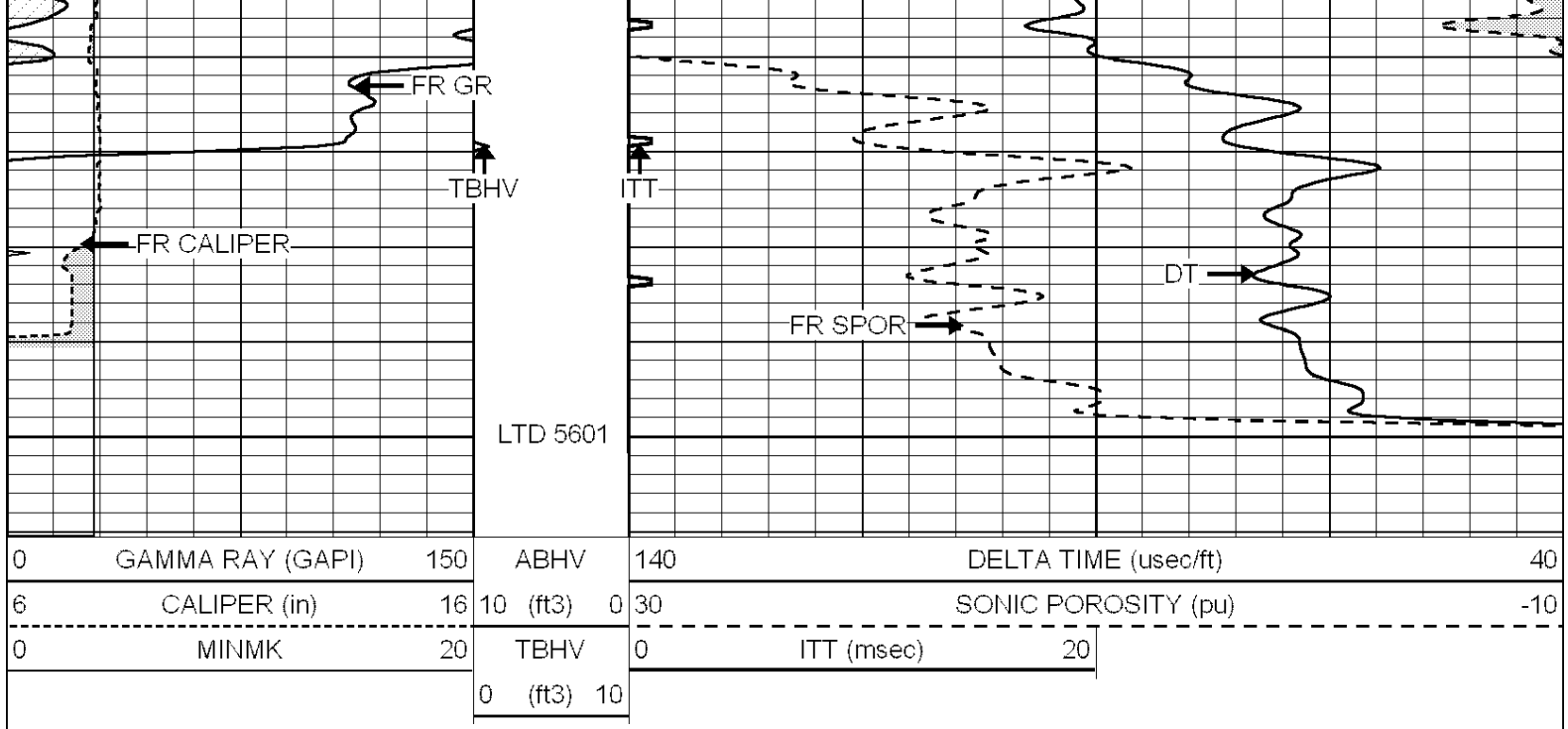
5400

5450

5500

5550

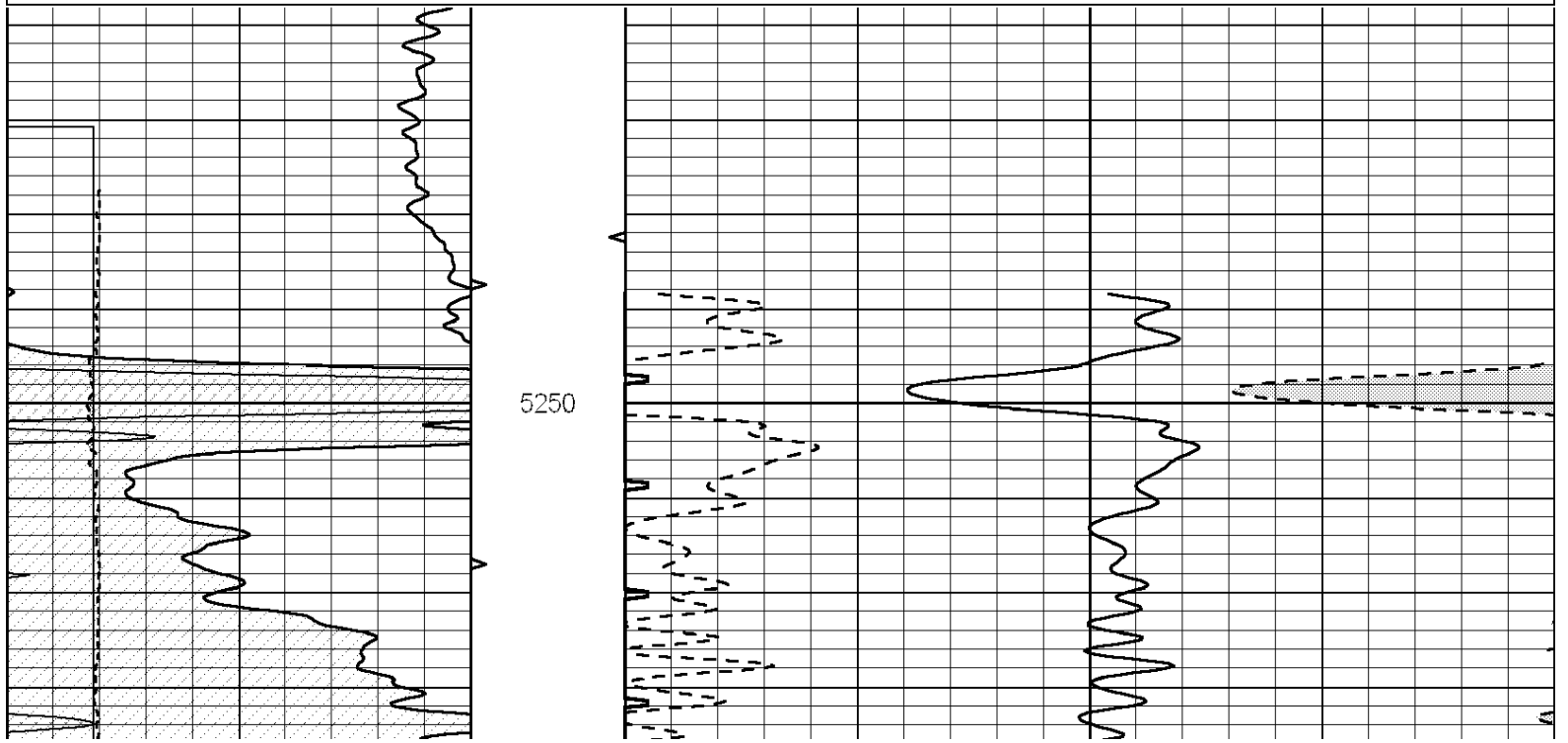
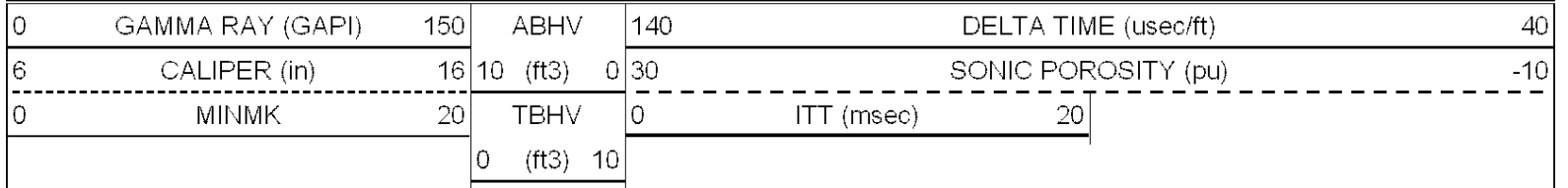
ABHV
5.5' CSG

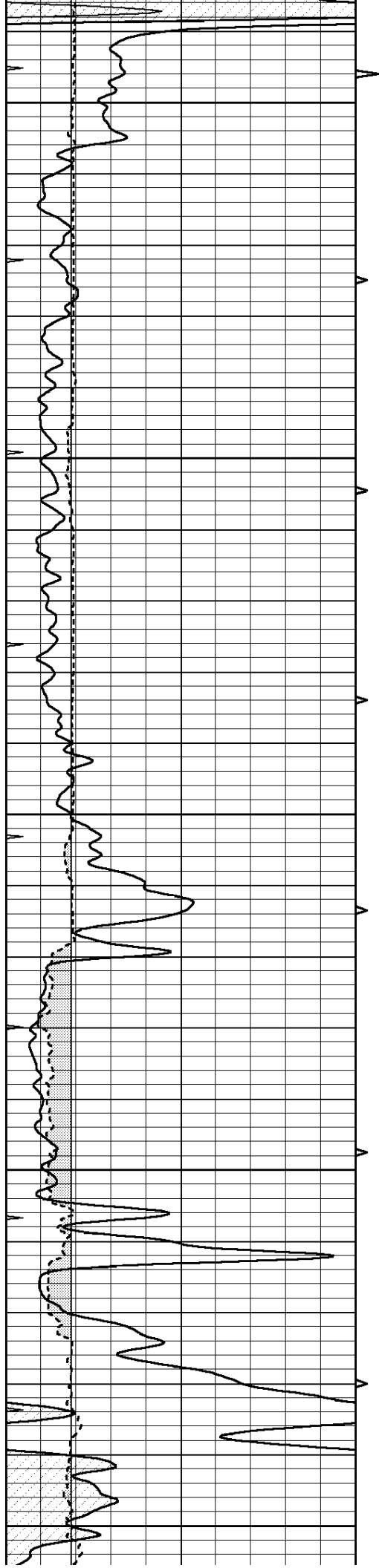


**COMPLETION
& PRODUCTION
SERVICES CO.**

REPEAT SECTION

Database File: 010301pe.db
 Dataset Pathname: pass6.1
 Presentation Format: _slt
 Dataset Creation: Sun May 05 21:51:00 2013
 Charted by: Depth in Feet scaled 1:240





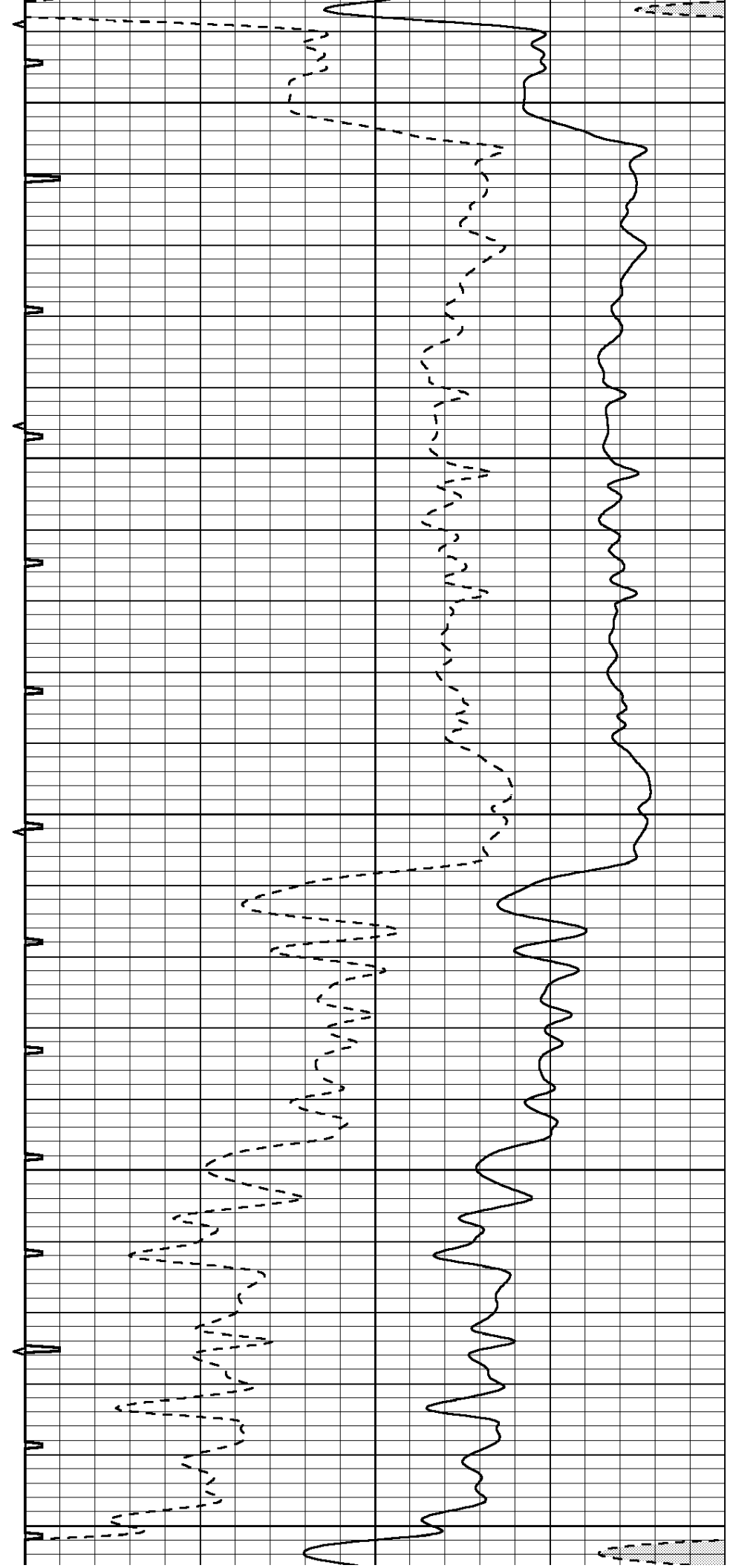
5300

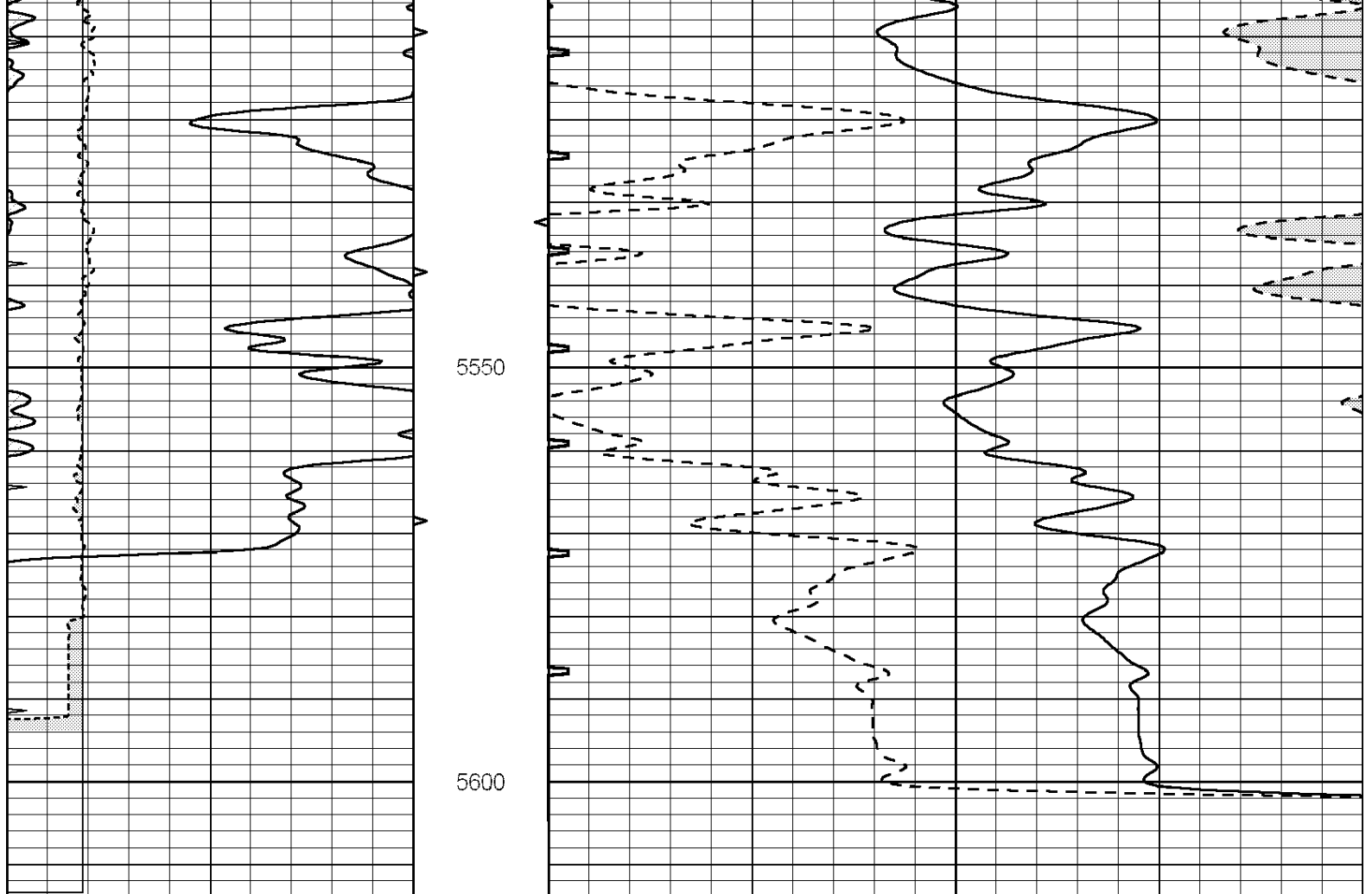
5350

5400

5450

5500





0	GAMMA RAY (GAPI)	150	ABHV	140	DELTA TIME (usec/ft)	40
6	CALIPER (in)	16	10 (ft3)	0 30	SONIC POROSITY (pu)	-10
0	MINMK	20	TBHV	0	ITT (msec)	20
			0 (ft3)	10		