



**COMPLETION  
& PRODUCTION  
SERVICES CO.**

**MICRO  
LOG**

Company	LOTUS OPERATING CO., LLC.	Company	LOTUS OPERATING COMPANY, LLC.
Well	RM STERLING #6	Well	RM STERLING #6
Field	STRANATHAN	Field	STRANATHAN
County	BARBER	County	BARBER
State	KANSAS	State	KANSAS
Location:	API # : 15-007-24010-0000	Other Services CDL/CNL/PE DIL/SON	
Permanent Datum	GROUND LEVEL	Elevation	1455
Log Measured From	KELLY BUSHING 13' A.G.L.	K.B.	1468
Drilling Measured From	KELLY BUSHING	D.F.	1466
		G.L.	1455

Date	5/5/13
Run Number	TWO
Depth Driller	5600
Depth Logger	5601
Bottom Logged Interval	5579
Top Log Interval	3600
Casing Driller	10 3/4"@261'
Casing Logger	261'
Bit Size	7 7/8"
Type Fluid in Hole	CHEMICAL MUD
Density / Viscosity	9.5/60
pH / Fluid Loss	11.0/9.0
Source of Sample	FLOWLINE
Rim @ Meas. Temp	0.75@89F
Rmf @ Meas. Temp	0.56@89F
Rmc @ Meas. Temp	0.90@89F
Source of Rmf / Rmc	MEASUREMENT
Rim @ BHT	0.51@130F
Time Circulation Stopped	2 HOURS
Time Logger on Bottom	
Maximum Recorded Temperature	130F
Equipment Number	4854
Location	HAYS, KANSAS
Recorded By	JEFF GRONEMEG
Witnessed By	TIM HELLMAN

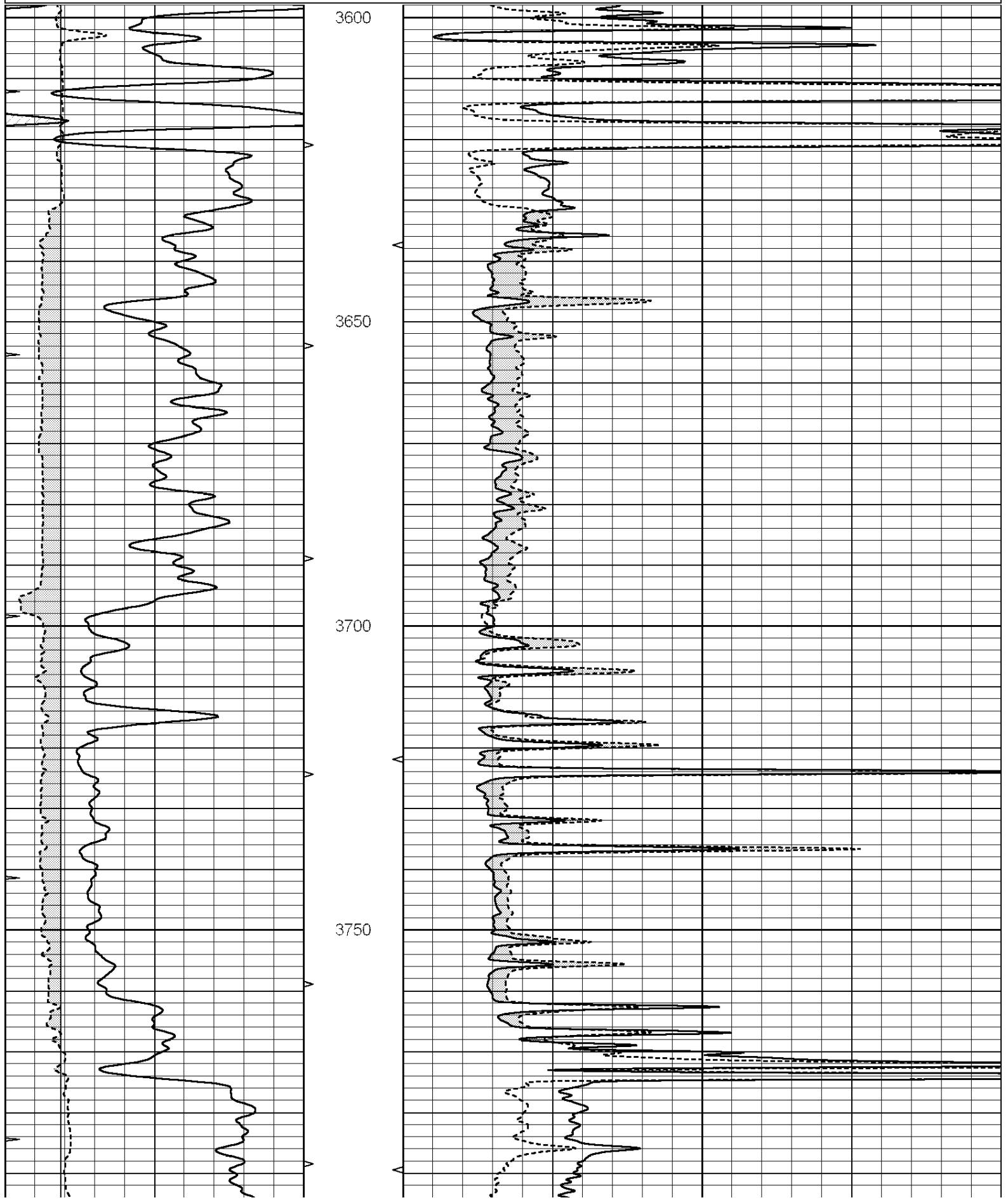
<<< Fold Here >>>

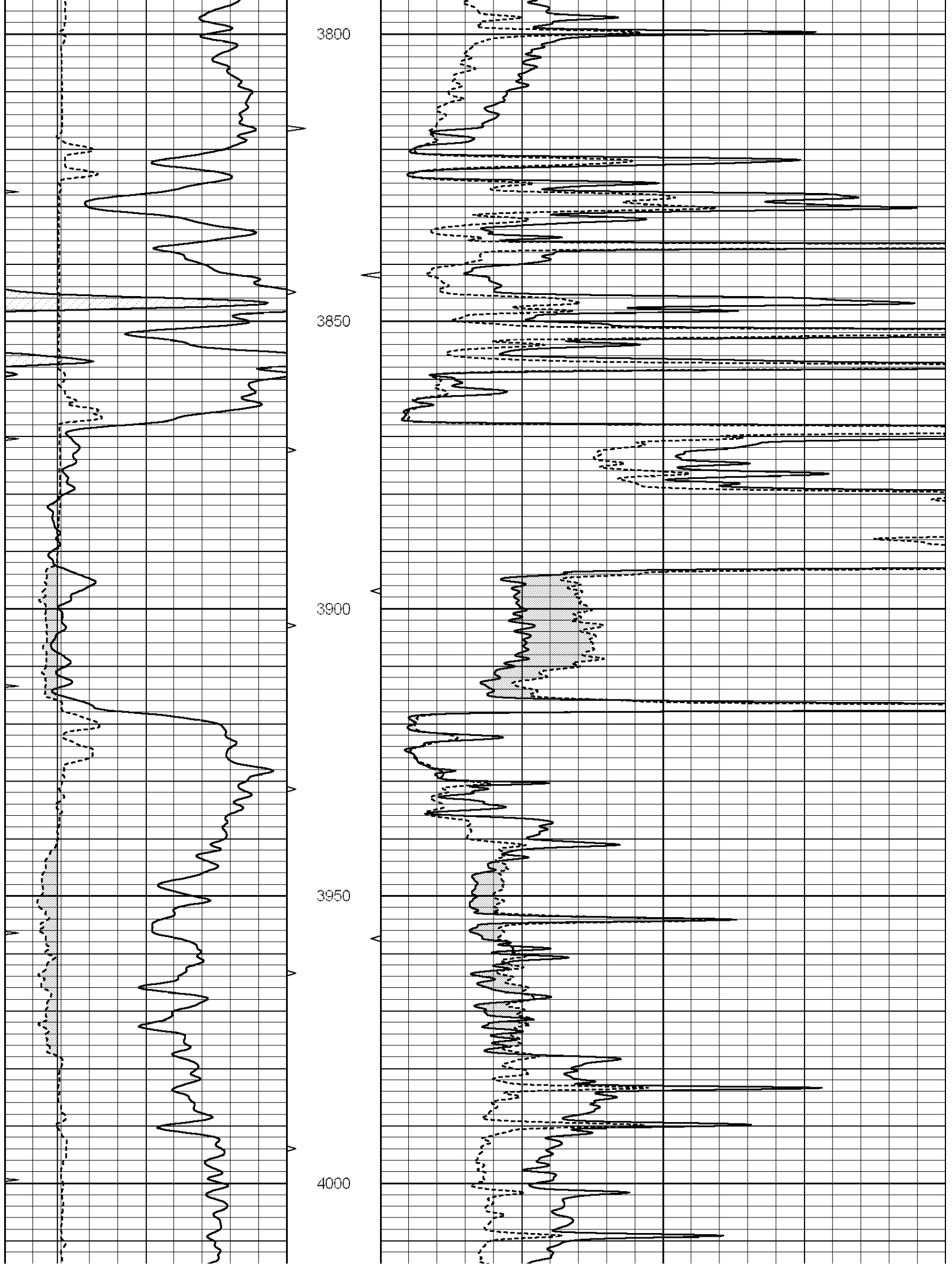
All interpretations are opinions based on inferences from electrical or other measurements and we cannot and do not guarantee the accuracy or correctness of any interpretation, and we shall not, except in the case of gross or willful negligence on our part, be liable or responsible for any loss, costs, damages, or expenses incurred or sustained by anyone resulting from any interpretation made by any of our officers, agents or employees. These interpretations are also subject to our general terms and conditions set out in our current Price Schedule.

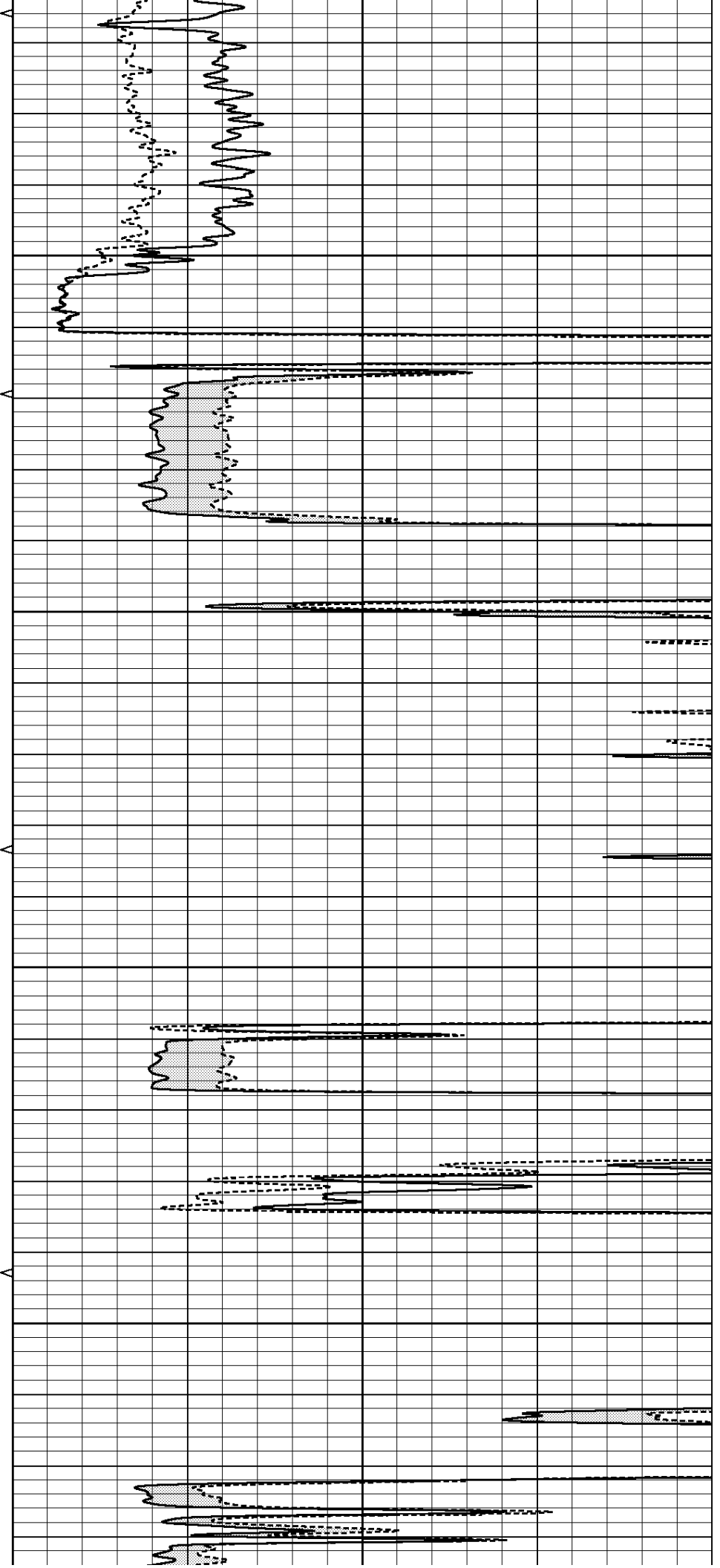
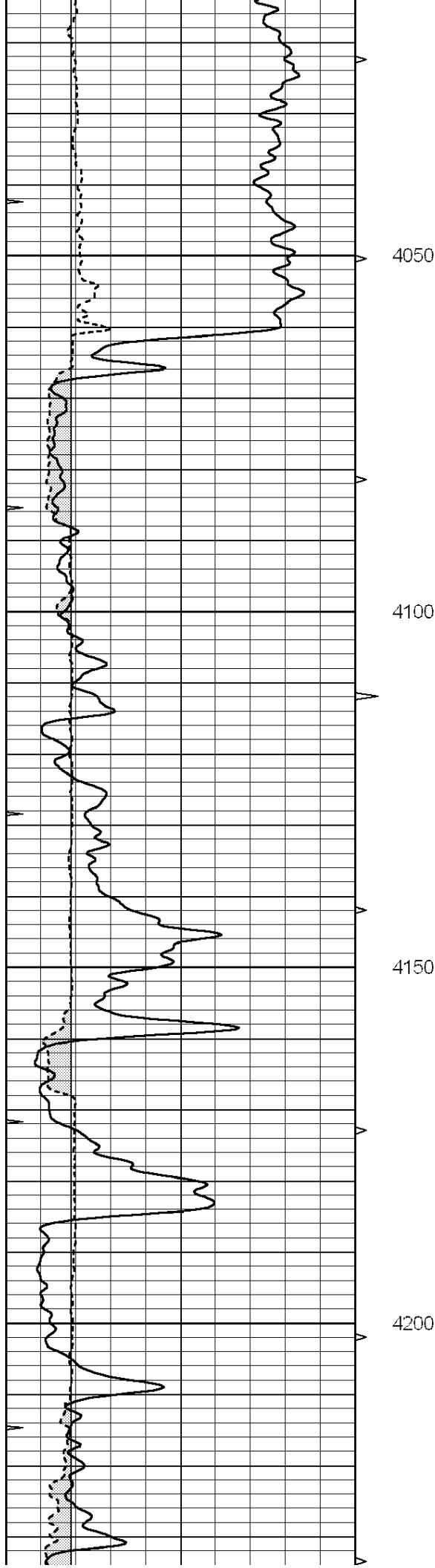
**Comments**

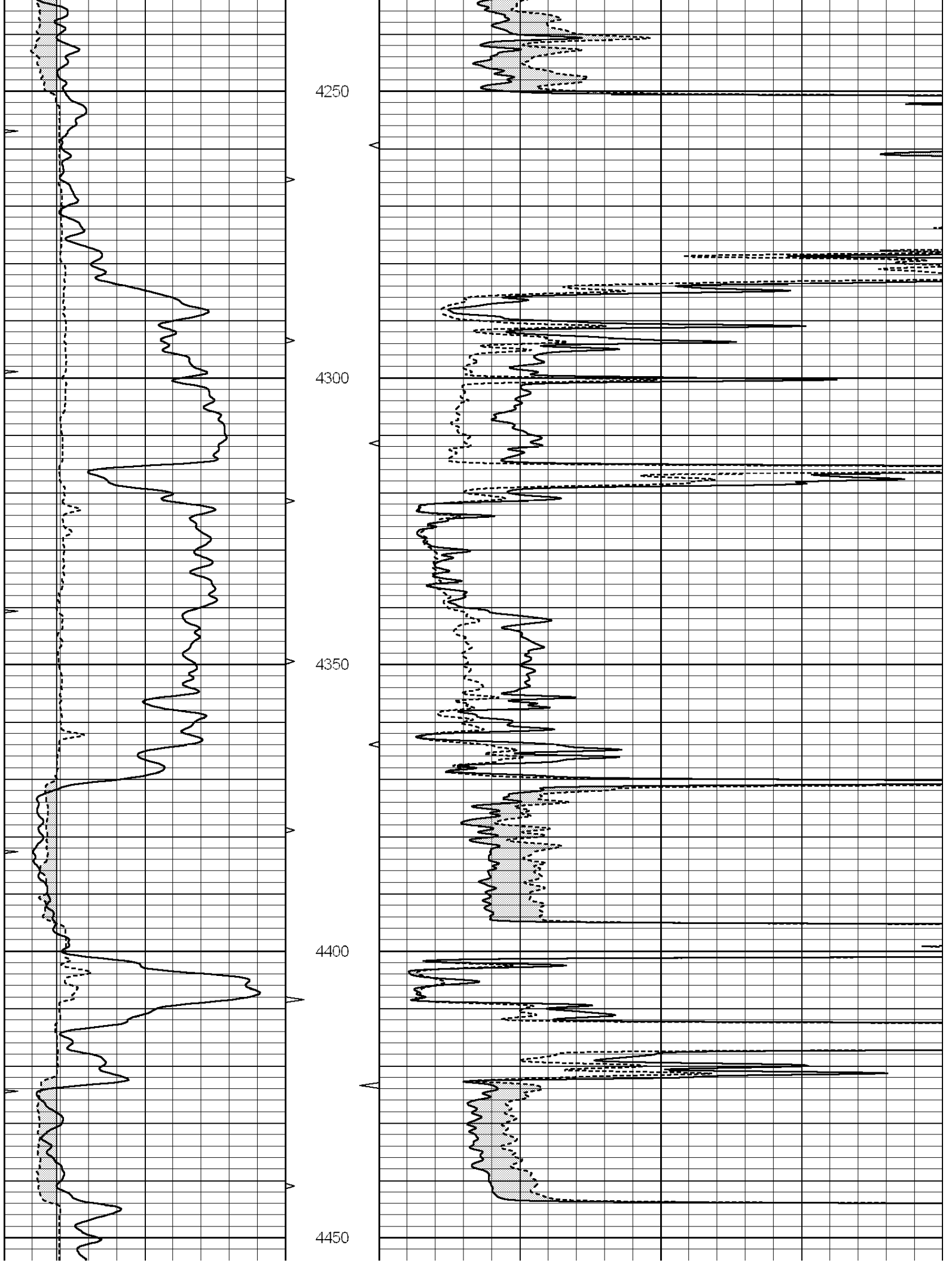
THANK YOU FOR USING "NABORS" HAYS, KANSAS (785) 628-6395  
DIRECTIONS  
HARDTNER, KS - 2 1/2 MILES WEST FROM STOP SIGN - 2 MILES NORTH  
WEST INTO

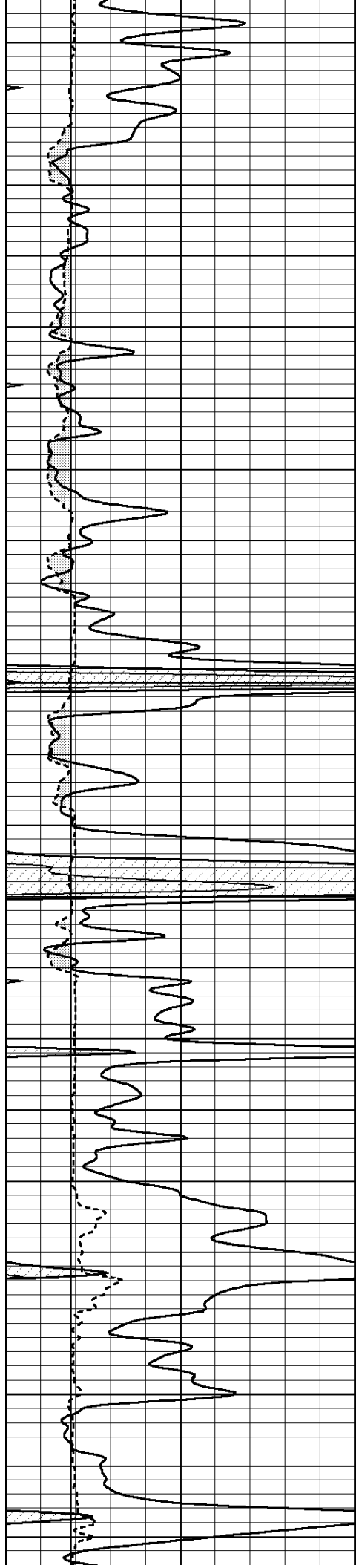
0	GAMMA RAY (GAPI)	150	ABHV	0	MEL1.5 (Ohm-m)	40
6	CALIPER (in)	16	10 (ft3)	0	MEL2.0 (Ohm-m)	40
0	MINMK	20	TBHV			
			0 (ft3)	10		









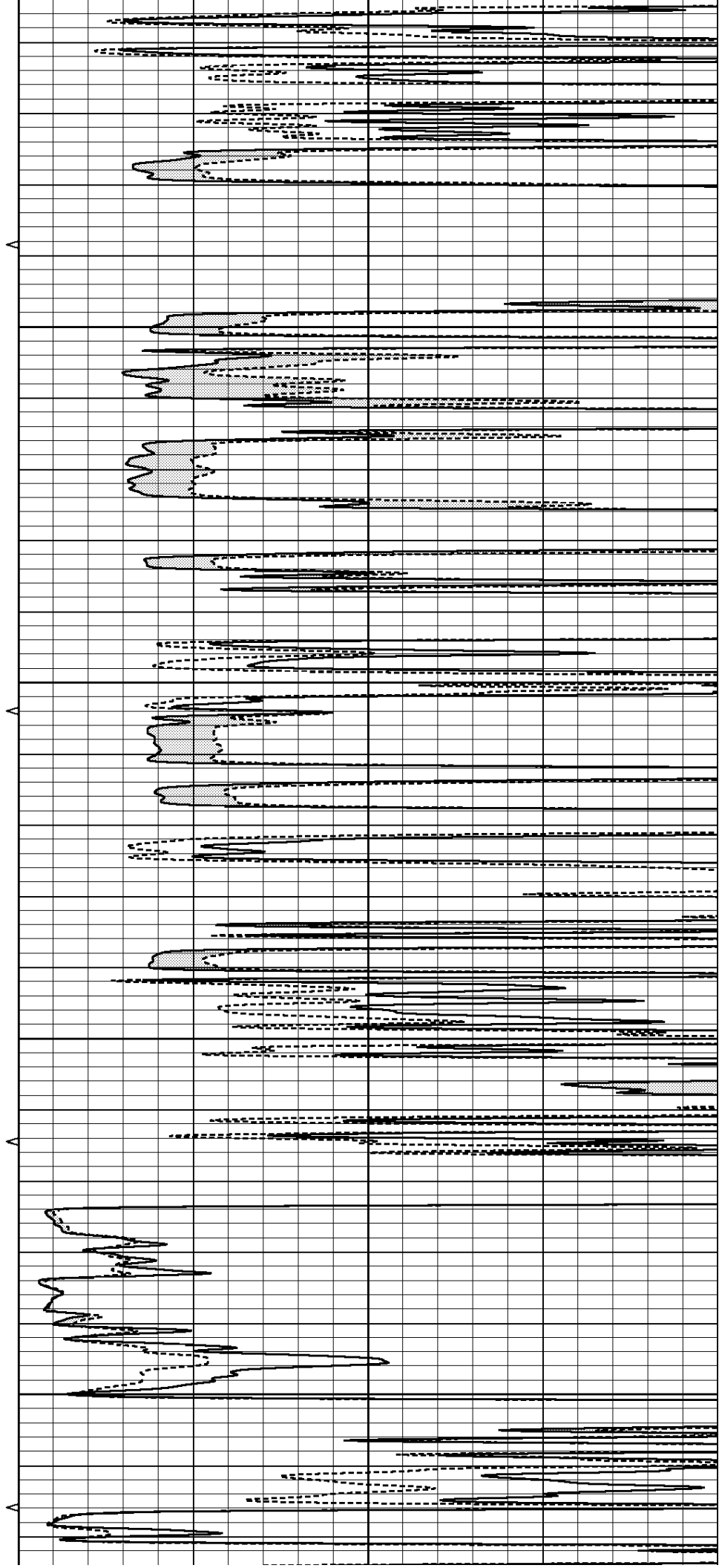


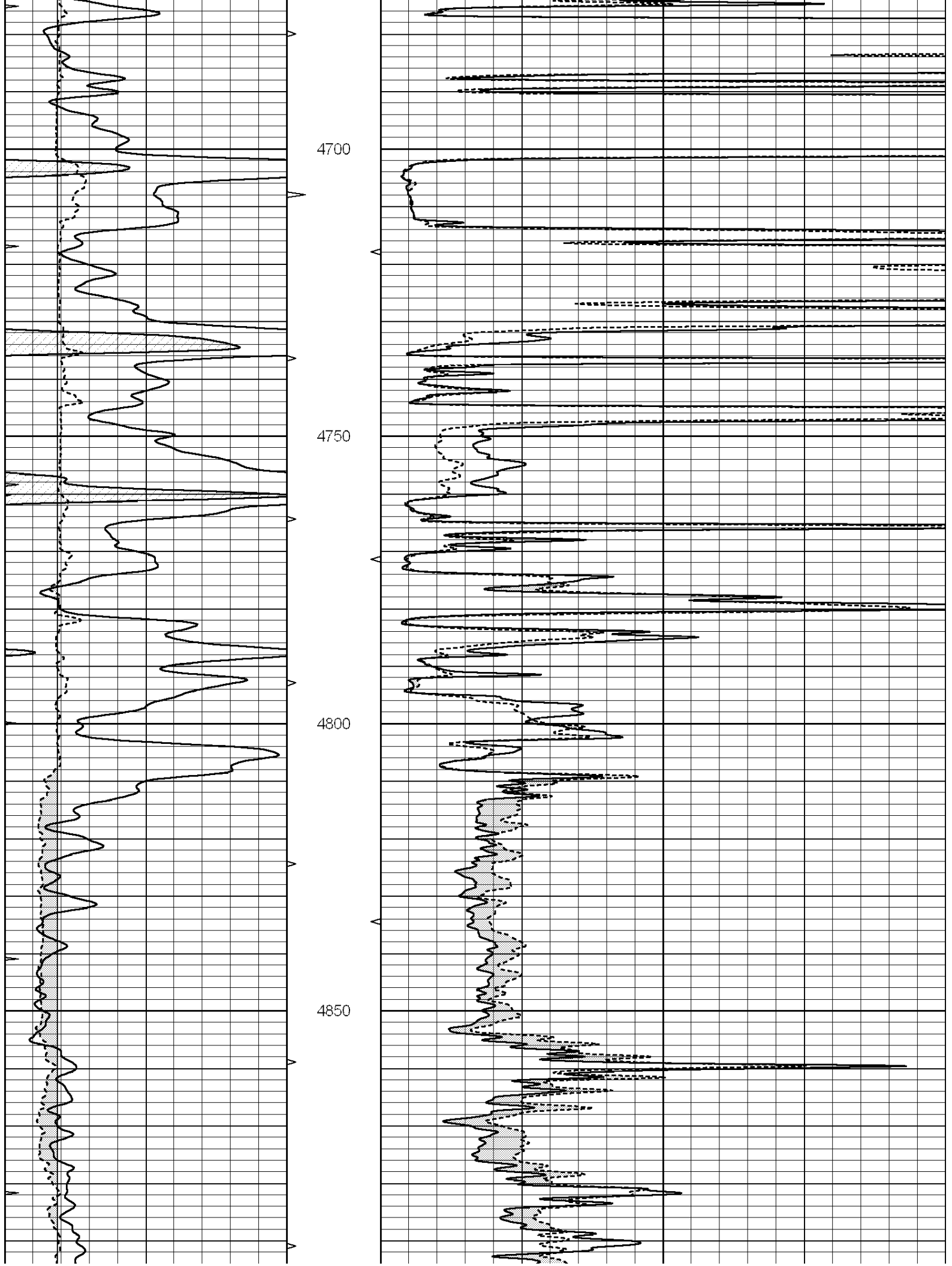
4500

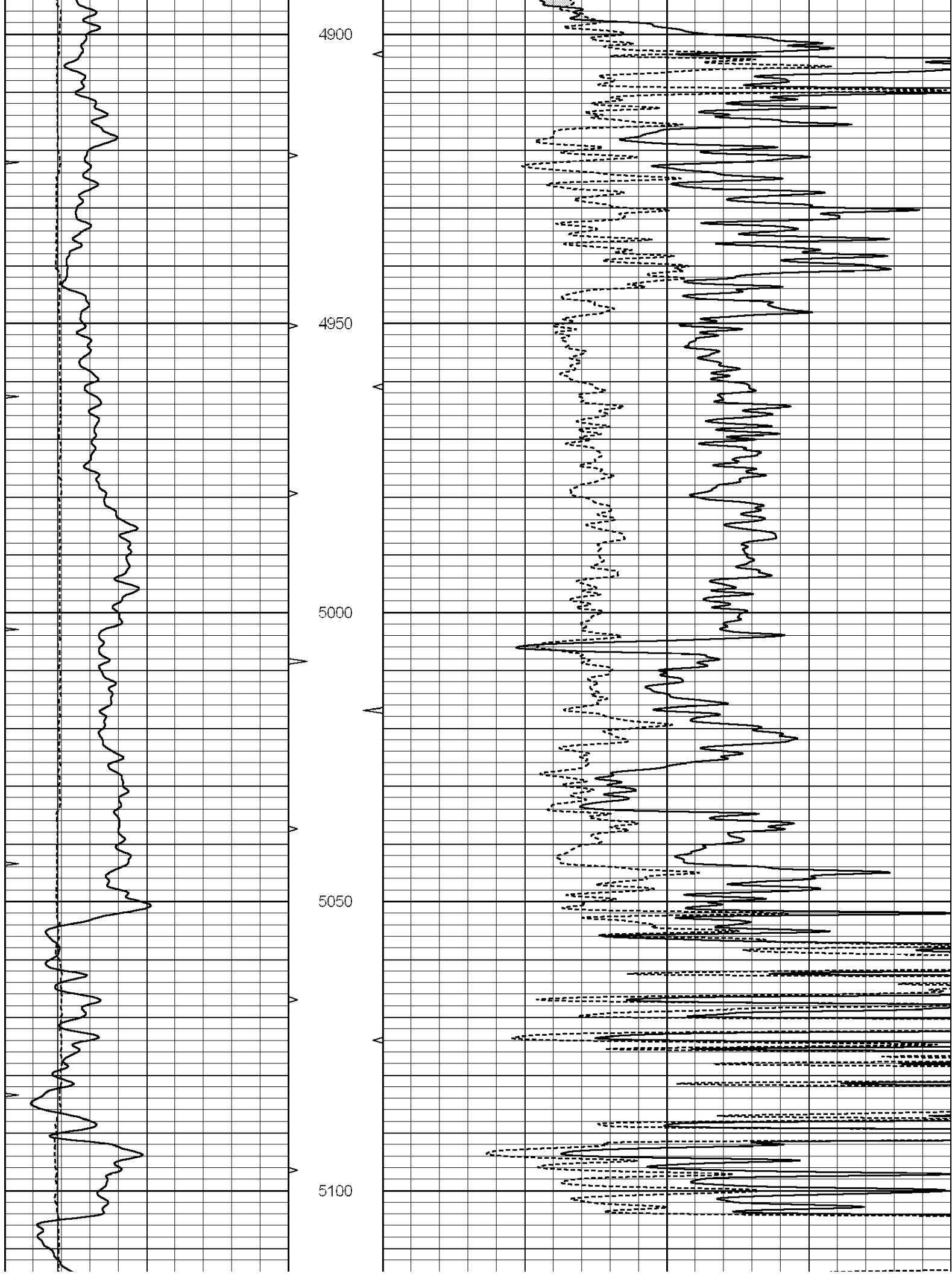
4550

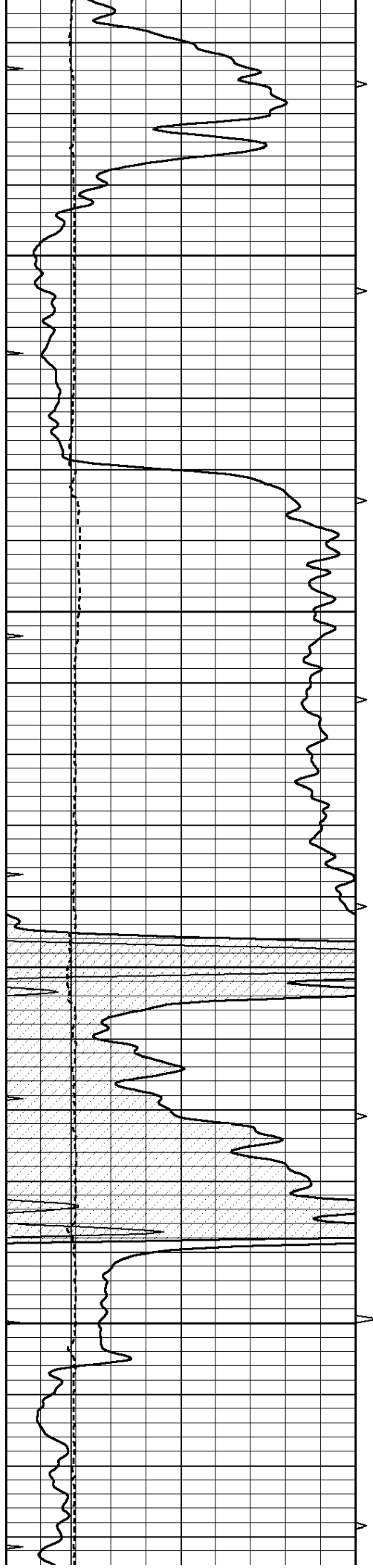
4600

4650







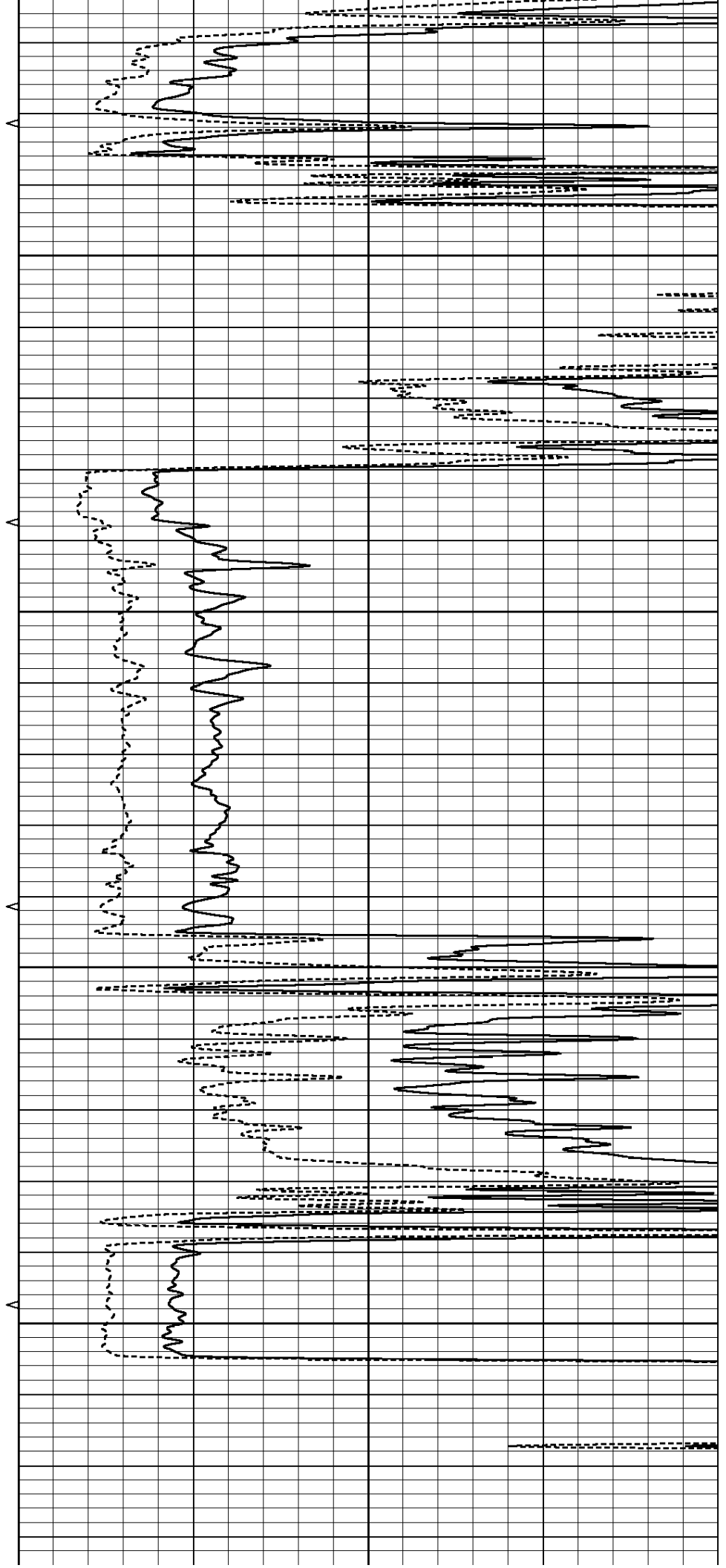


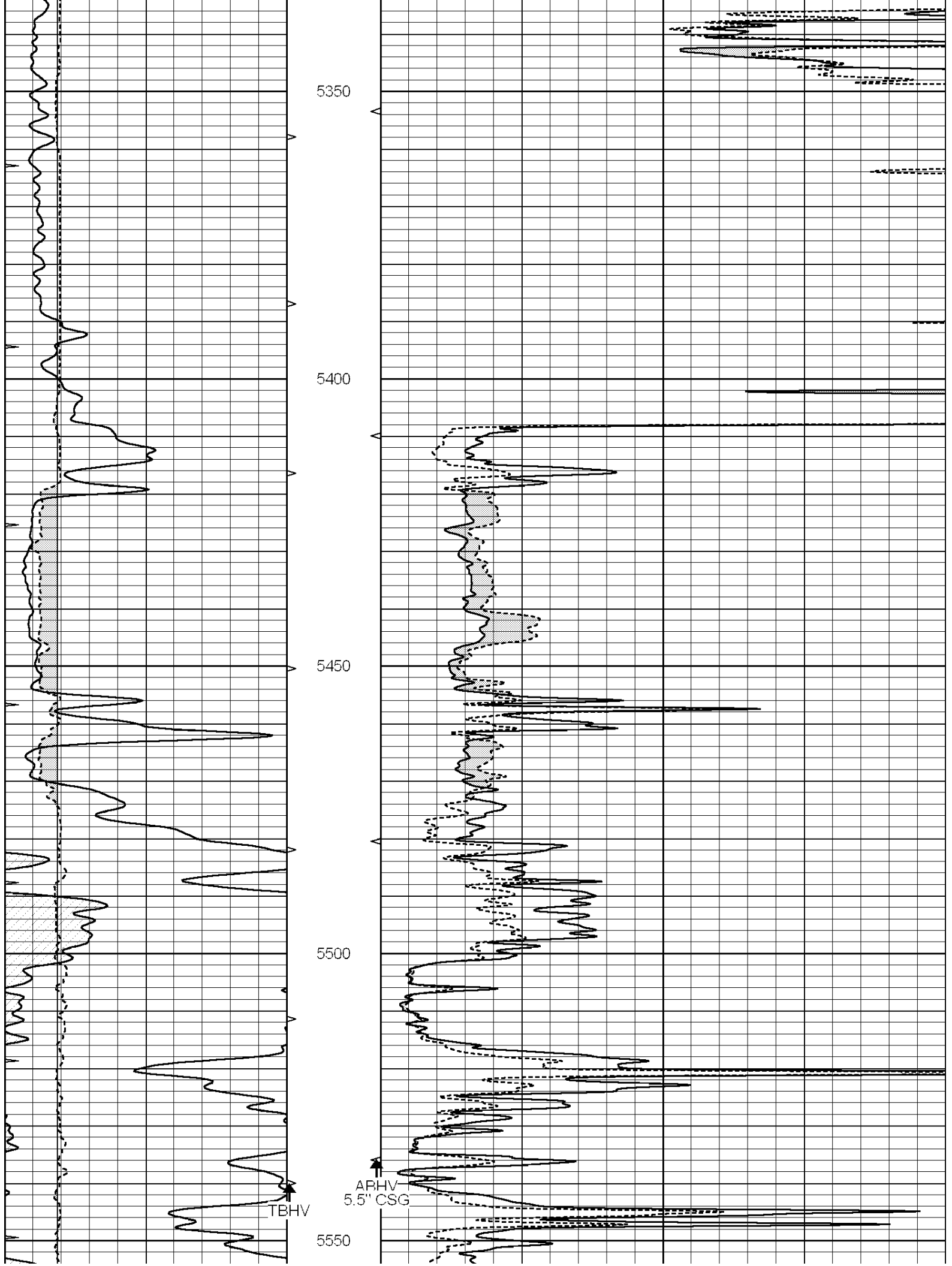
5150

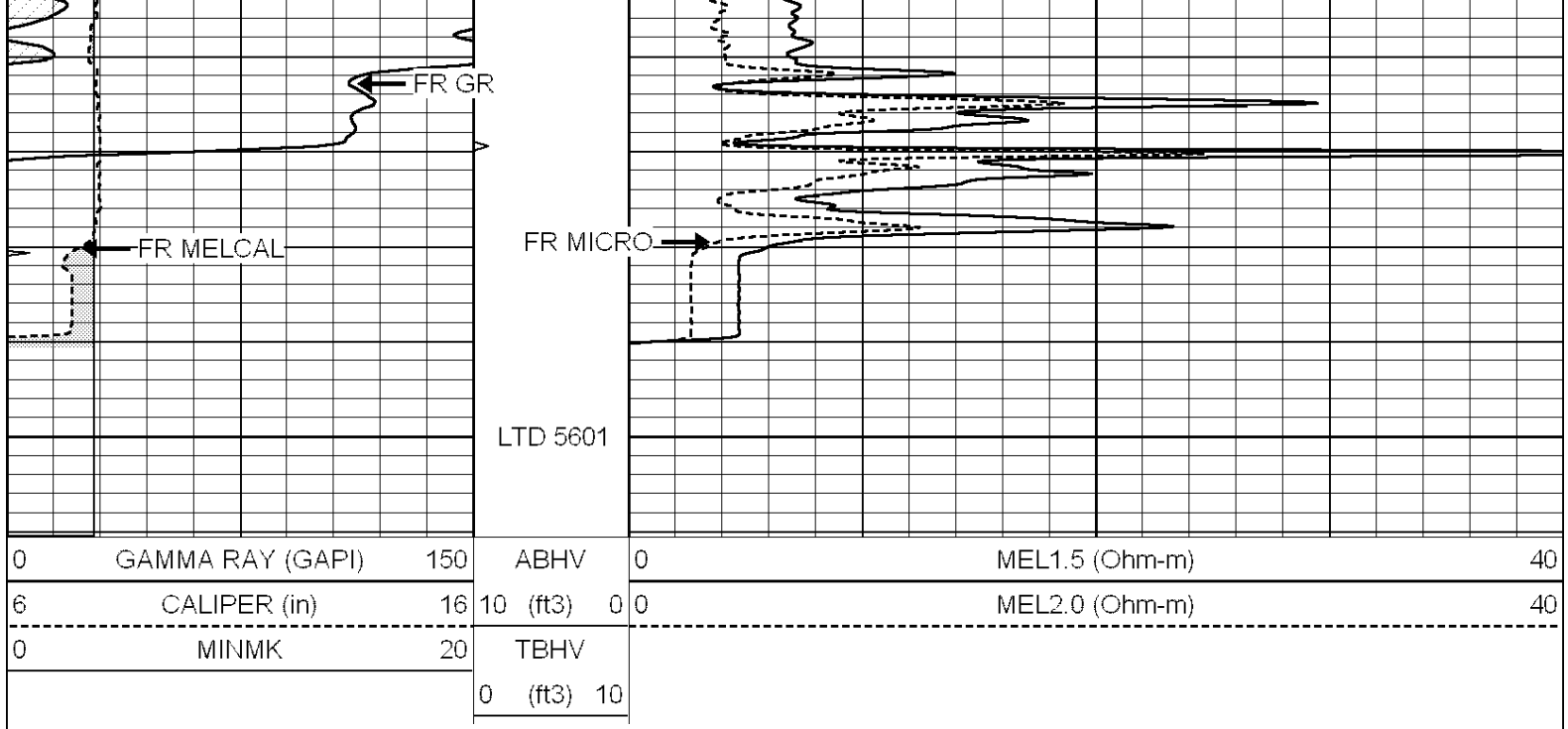
5200

5250

5300

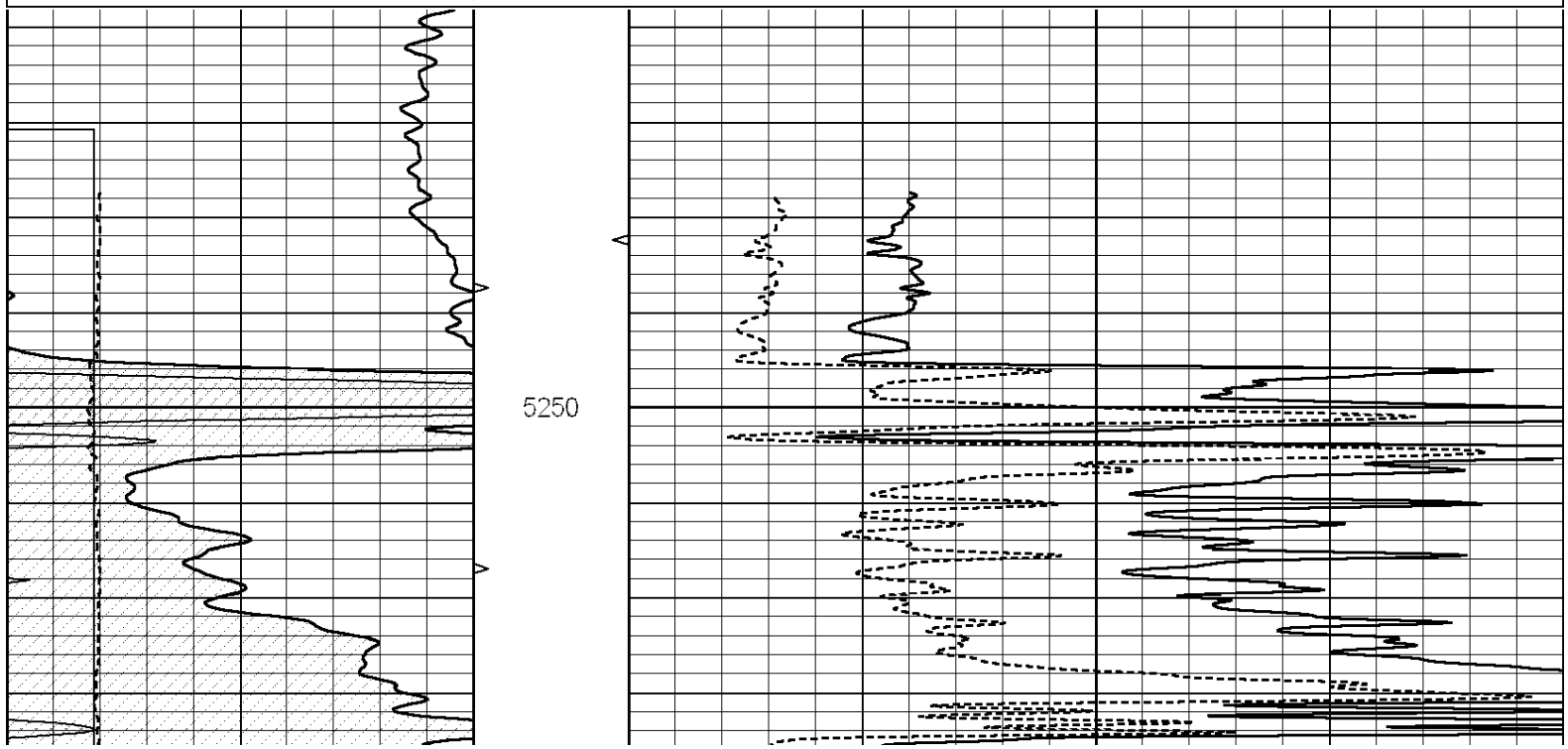
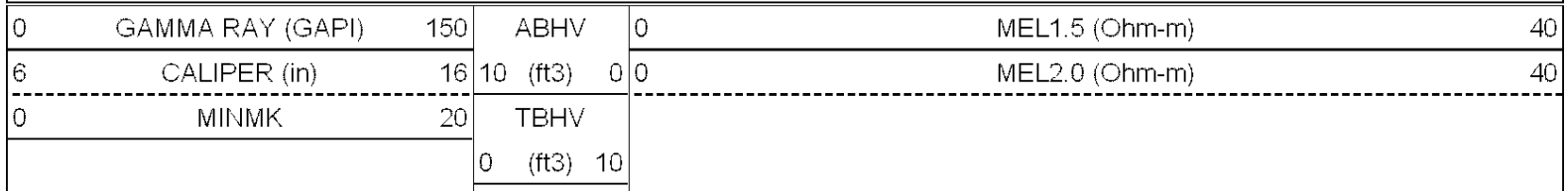


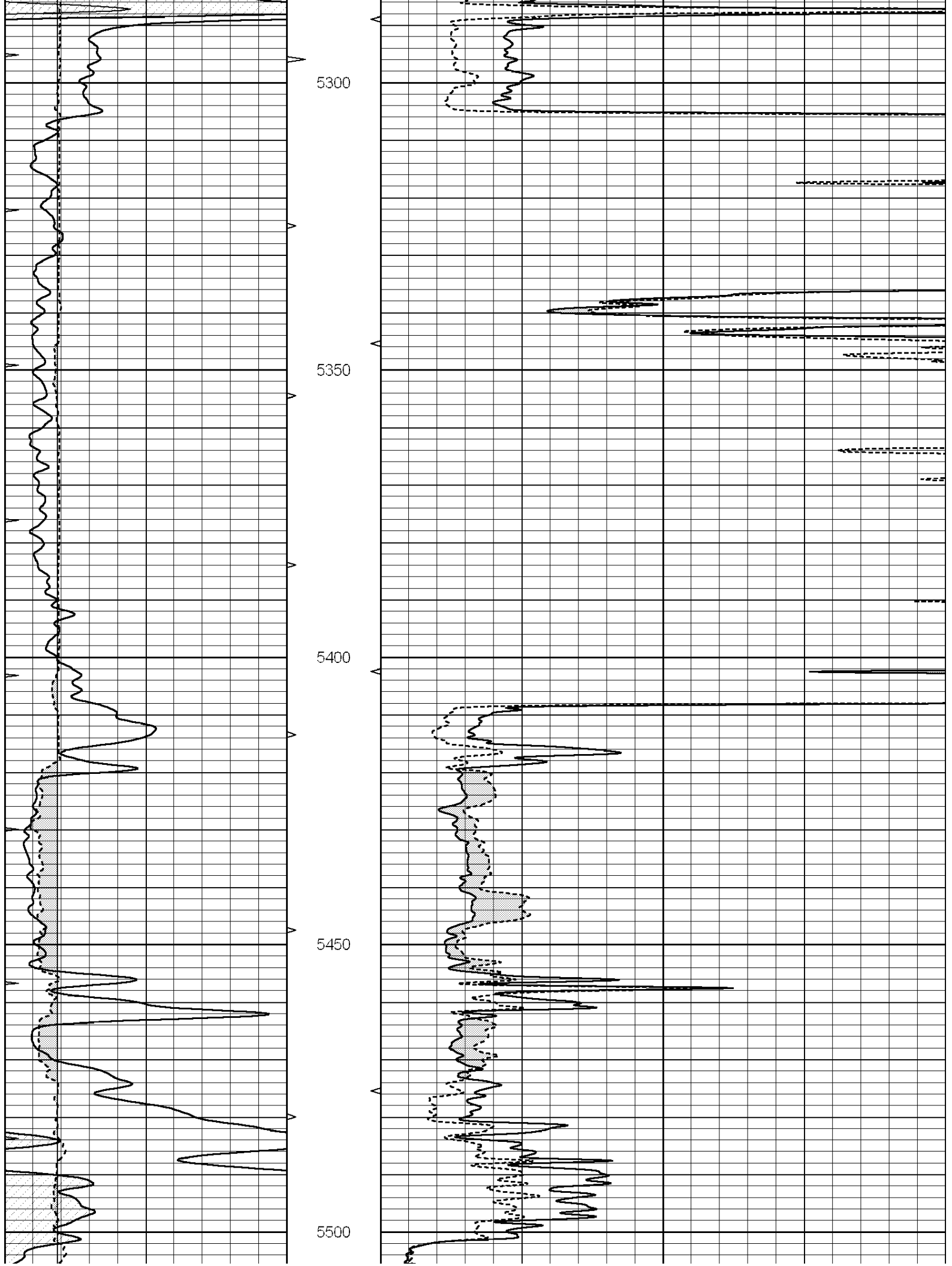


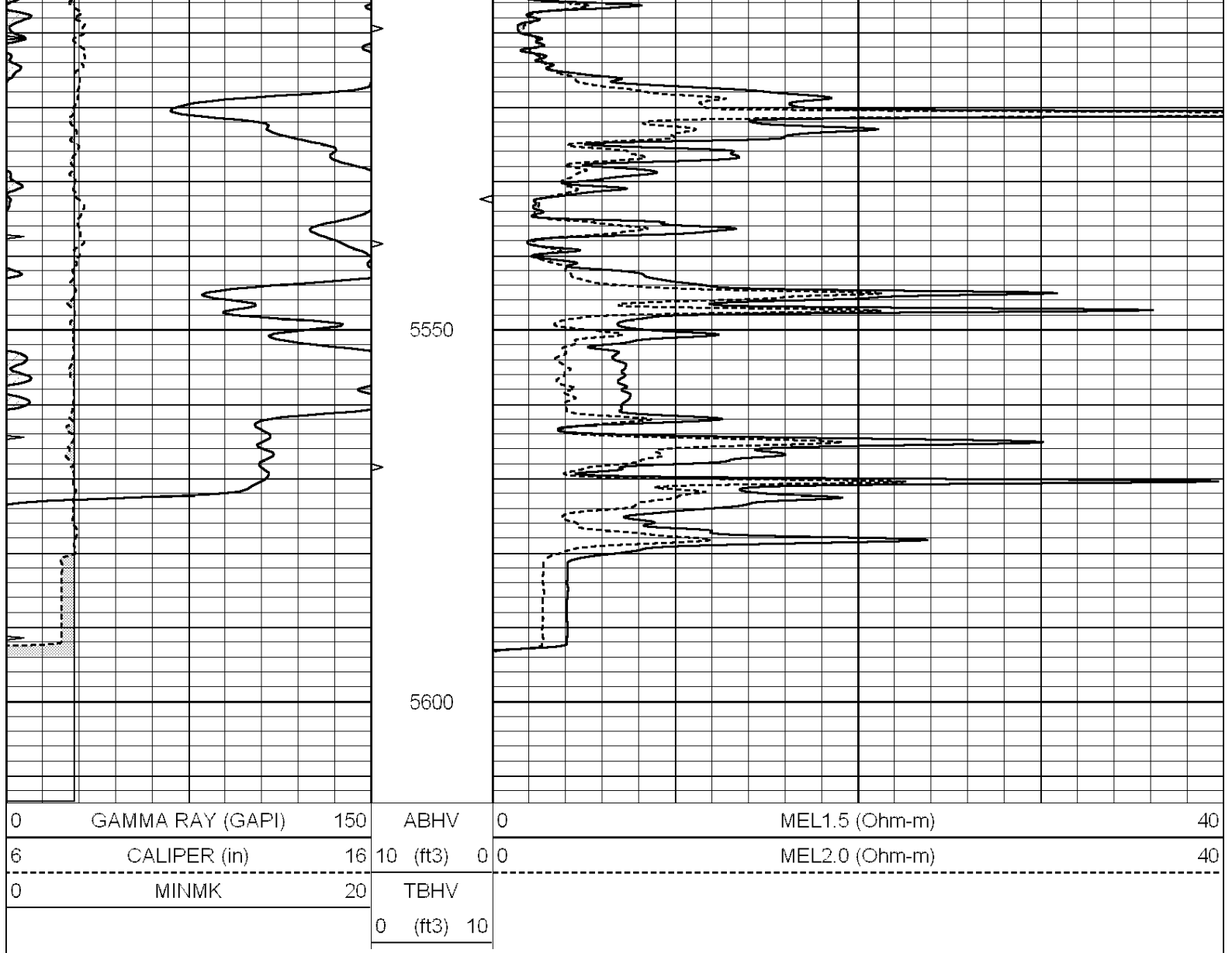


# REPEAT SECTION

Database File: 010301pe.db  
 Dataset Pathname: pass6.1  
 Presentation Format: \_micro  
 Dataset Creation: Sun May 05 21:51:00 2013  
 Charted by: Depth in Feet scaled 1:240







### Calibration Report

Database File: 010301pe.db  
 Dataset Pathname: pass7.1  
 Dataset Creation: Sun May 05 21:46:12 2013

### MICRO Calibration Report

Serial Number: MICRO5  
 Tool Model: PROBE  
 Performed: Wed Apr 24 10:31:41 2013

Caliper Calibration: Gain=3.605      Offset=-6.802  
 References      Low Cal      High Cal  
 Readings      8.000      15.000  
                  4.106      6.048

1.5" Calibration: Gain=40.000      Offset=-1.000  
 References      Low Cal      High Cal  
 Readings      0.000      20.000  
                  0.015      1.005

2" Calibration: Gain=45.000      Offset=-0.500  
 References      Low Cal      High Cal  
                  0.000      20.000

Readings

0.009

0.910

Gamma Ray Calibration Report

Serial Number:

GR3

Tool Model:

OPEN

Performed:

Thu May 02 16:57:38 2013

Calibrator Value:

200.0

GAPI

Background Reading:

3.0

cps

Calibrator Reading:

186.0

cps

Sensitivity:

1.0000

GAPI/cps