



MIDWEST SURVEYS
 LOGGING - PERFORATING - CONSULTING SERVICES
 P.O. Box 66, Osawatomie, KS 66064
 913 : 755 - 2128

GAMMA RAY / NEUTRON / CCL

File No.

Company King Oil, Inc

Well North Unit No. KW-3

Field Bush City Shoestring

County Anderson State Kansas

Location 4547' FSL & 1953' FEL

Location NW-SE-NW/NE

Sec. 4 Typ. 21s Rge. 21e

Permanent Datum GL Elevation NA

Log Measured From GL

Drilling Measured From GL

Other Services Perforate

Elevation K.B. NA D.F. NA G.L. NA

Date 10-24-2013

Run Number One

Depth Driller 759.5

Depth Logger 758.5

Bottom Logged Interval 20.0

Fluid Level Full

Type Fluid Water

Density / Viscosity NA

Salinity - PPM Cl NA

Max Recorded Temp NA

Estimated Cement Top 0.0

Equipment No. Location 107 Osawatimie

Recorded By Steve Mandich

Witnessed By Rick King

RUN	BIT	FROM	TO	SIZE	WGT.	FROM	TO
One	9.875"	0.0	21.0	7.00"	17.0#	0.0	21.0
Two	5.625"	21.0	738.0	2.875"	6.5#	0.0	764.0

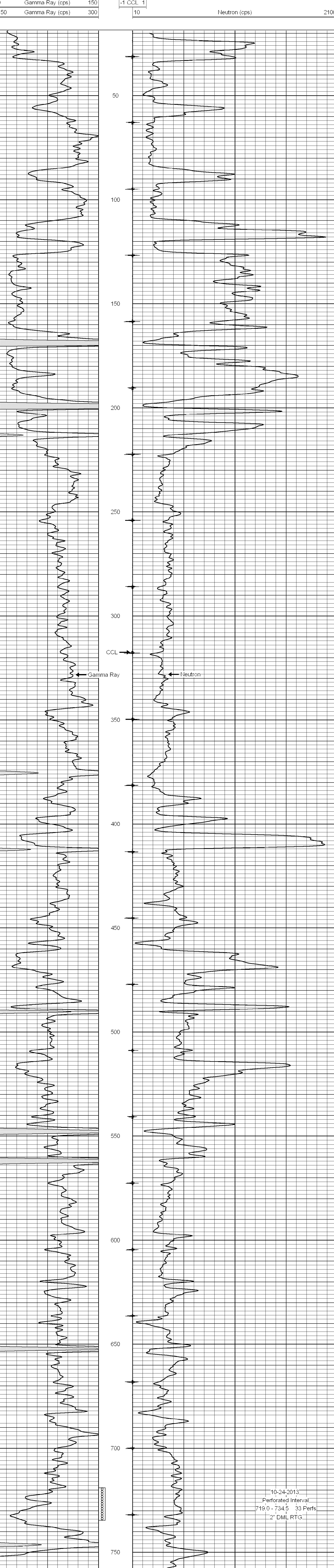
<<< Fold Here >>>

All interpretations are opinions based on inferences from electrical or other measurements and we cannot and do not guarantee the accuracy or correctness of any interpretation, and we shall not, except in the case of gross or willful negligence on our part, be liable or responsible for any loss, costs, damages, or expenses incurred or sustained by anyone resulting from any interpretation made by any of our officers, agents or employees. These interpretations are also subject to our general terms and conditions set out in our current Price Schedule.

Comments

Drilling Contractor :
 John Leis Oilfield Services

Database File: northunit3kw.db
 Dataset Pathname: pass1
 Presentation Format: gr-n-ccl
 Dataset Creation: Thu Oct 24 13:14:16 2013 by Log SCH 111116
 Charted by: Depth in Feet scaled 1:240



10-24-2013
 Perforated Interval
 719.0 - 734.5 33 Perfs
 2" DML RTG

