



# MICROLOG

Company	BRUCE OIL COMPANY, L.L.C.	AP #	15-035-19543-00-01	Other Services	CDUSWN, DIL
Well	KAW# 2 SWD	Location:	SEC 17 TWP 33S RGE 3E	Elevation	1115'
Field	RAINBOW BEND	Permament Datum	GL	Elevation	1123'
County	COMWLEY	Log Measured From	KB	D.L.	1122'
State	KANSAS	Drilling Measured From	KB	G.L.	1115'
Date		Run Number	ONE		
Depth Logger	3855'	Depth Diller	3855'		
Bottom Logged Interval	2700'				
Log Interval	8.56' @ 95'				
Casing Logger	8.56' @ 95'				
Case Size	DISPERSED				
Type of In Hole					
pH / Fluid Loss	10.4 / 9.9				
Source of Sample	FLOWLINE				
Rm @ Meas. Temp	2.00 @ 80				
Rm @ Meas. Temp	2.40 @ 80				
Rm @ Meas. Temp	1.60 @ 80				
Source of Rm / Rmc	CAL				
Rm @ BHT	1.41 @ 113				
Time Circulation Stopped	11:00 AM				
Time Logger on Bottom	4:00 PM				
Maximum Recorded Temperature	113				
Equipment Number	CWS				
Location	HOMINY, OK				
Witnessed By	MR. JOHNSON				

<<< Fold Here >>>

All interpretations are opinions based on inferences from electrical or other measurements and we cannot and do not guarantee the accuracy or correctness of any interpretation, and we shall not, except in the case of gross or willful negligence on our part, be liable or responsible for any loss, costs, damages, or expenses incurred or sustained by anyone resulting from any interpretation made by any of our officers, agents or employees. These interpretations are also subject to our general terms and conditions set out in our current Price Schedule.

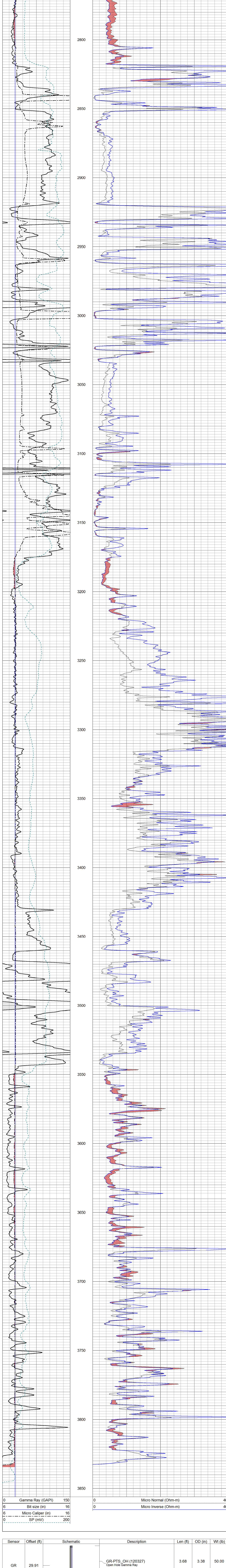
Comments

OW2-8457  
CREW : KIDD  
OLD TD 3222'. NEW HOLE DOWN TO 3855'

## 5" MICROLOG SECTION

Database File:	ow2-8457 bruce oil company.db
Dataset Pathname:	DILM/pass1.1
Representation Format:	microlog
Dataset Creation:	Fri Oct 04 17:15:38 2013 by Calc SOC 120430
Charted by:	Depth in Feet scaled 1:240

0	Gamma Ray (GAPI)	150	0	Micro Normal (Ohm-m)	40
6	Bit size (in)	16	0	Micro Inverse (Ohm-m)	40
6	Micro Caliper (in)	16			
0	SP (mV)	200			



Sensor	Offset (ft)	Schematic	Description	Len (ft)	OD (in)	Wt (lb)
GR	29.91		GR-PTS_OH (120327) Open Hole Gamma Ray	3.68	3.38	50.00
MN MCAL MI	23.03 23.03 22.95		MEL-GOI (TEL) Microlog Telemetry	7.21	3.50	100.00
CILD SP	10.92 10.92		DIL-GEAR (159) Dual Induction Electrical Log	21.36	4.00	345.00
CILM	7.00					
RLL3	1.67					

Dataset: ow2-8457 bruce oil company.db: field/well/DILM/pass1  
Total Length: 32.25 ft  
Total Weight: 495.00 lb  
O.D. 4.00 in