



MIDWEST SURVEYS
 LOGGING - PERFORATING - CONSULTING SERVICES
 P.O. Box 69, Osawatomie, KS 66064
 913.755.2128

GAMMA RAY / NEUTRON / CCL

File No. _____

Company **D.E. Exploration, Inc.**
 Well **Freeman No. R-22**
 Field **Neosho Falls - Leroy**
 County **Coffey** State **Kansas**

Location **4290 FSL & 3510' FEL**
E2-SW-NE-NW

Sec. **11** Twp. **23S** Rge. **10E**
 Permanent Datum **GL** Elevation **962'**
 Log Measured From **GL** K.B. NA
 Drilling Measured From **GL** D.F. NA
GL 982'

Date _____
 Run Number **One**
 Depth Driller **1064.0**
 Depth Logger **1022.3**
 Bottom Logged Interval **1021.3**
 Top Log Interval **200.0**
 Fluid Level **Full**

Type Fluid **Water**
 Density / Viscosity **NA**
 Salinity - PPM Cl **NA**
 Max Recorded Temp **NA**
 Estimated Cement Top **0.0**
 Equipment No. **107** Location **Osawatomie**
 Recorded By **Steve Mindich**
 Witnessed By **Doug Evans**

BOREHOLE RECORD				CASINGS RECORD			
RUN No.	BIT	FROM	TO	SIZE	WGT.	FROM	TO
One	12.25"	0.0	40.0	7.00"	19.0 #	0.0	40.0
Two	5.625"	40.0	1064.0	2.875"	6.5 #	0.0	1053.40
				Baffle	Set	At	1025.40

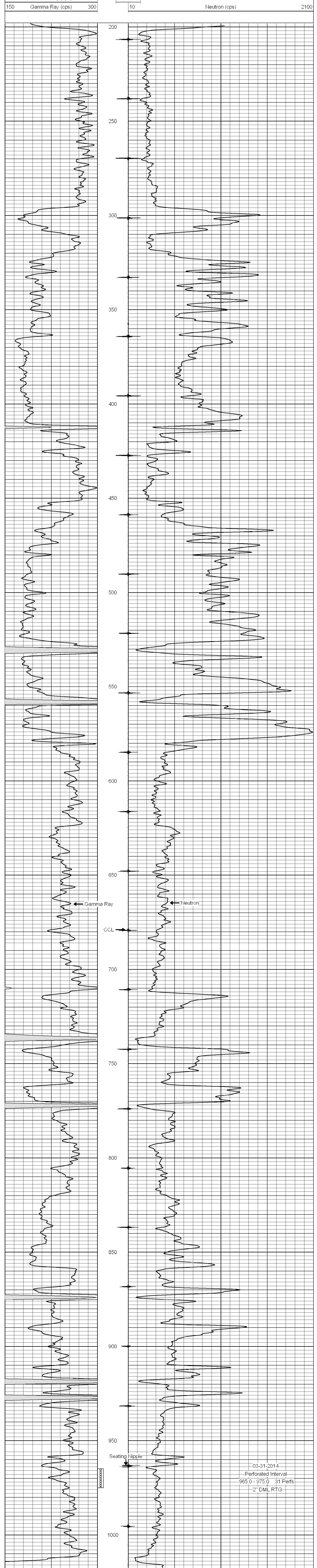
<< Fold Here >>

All interpretations are opinions based on inferences from electrical or other measurements and we cannot and do not guarantee the accuracy or correctness of any interpretation, and we shall not, except in the case of gross or willful negligence on our part, be liable or responsible for any loss, costs, damages, or expenses incurred or sustained by anyone resulting from any interpretation made by any of our officers, agents or employees. These interpretations are also subject to our general terms and conditions set out in our current Price Schedule.

Comments

Drilling Contractor :
Finney Drilling Company

Database File: freeman22r.db
 Dataset Pathname: pass1
 Presentation Format: gr-n-ccl
 Dataset Creation: Fri Mar 21 13:50:15 2014 by Log SCH 111116
 Charted by: Depth in Feet scaled 1:240



0 Gamma Ray (cps) 150 -1 CCL 1 10 Neutron (cps) 2100