



MIDWEST SURVEYS
 LOGGING - PERFORATING - CONSULTING SERVICES
 P.O. Box 69, Osawatomie, KS 66064
 913.755.2128

GAMMA RAY / NEUTRON / CCL

File No. _____

Company **D.E. Exploration, Inc.**

Well **Webb "A" No. R-14**

Field **Neosho Falls - Leroy**

County **Coffey** State **Kansas**

Location **4690 FSL & 2850' FEL**

SE-NE-NE-NW

Other Services **Perforate**

Sec. 11 Typ. 23s Rge. 10e

Permanent Datum **GL** Elevation **NA**

Log Measured From **GL** K.B. NA

Drilling Measured From **GL** D.F. NA

GL NA

Date **03-25-2014**

Run Number **One**

Depth Driller **10633.0**

Depth Logger **10233.0**

Bottom Logged Interval **10222.0**

Top Log Interval **200.0**

Fluid Level **Full**

Type Fluid **Water**

Density / Viscosity **NA**

Salinity - PPM Cl **NA**

Max Recorded Temp **NA**

Estimated Cement Top **0.0**

Equipment No. **107** Location **Osawatomie**

Recorded By **Steve Mandisch**

Witnessed By **Doug Evans**

BOREHOLE RECORD				CASING RECORD			
R/N	BIT	FROM	TO	SIZE	WGT.	FROM	TO
One	12.25"	0.0	40.0	7.00"	19.0 #	0.0	40.0
Two	5.625"	40.0	10633.0	2.875"	6.5 #	0.0	1053.10
						Ballie	At

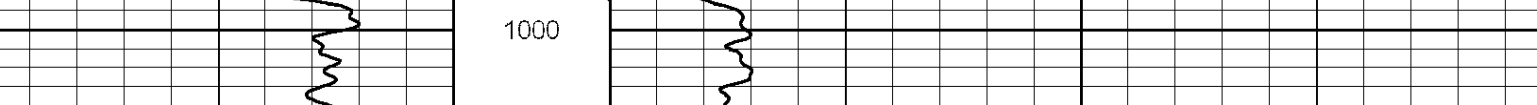
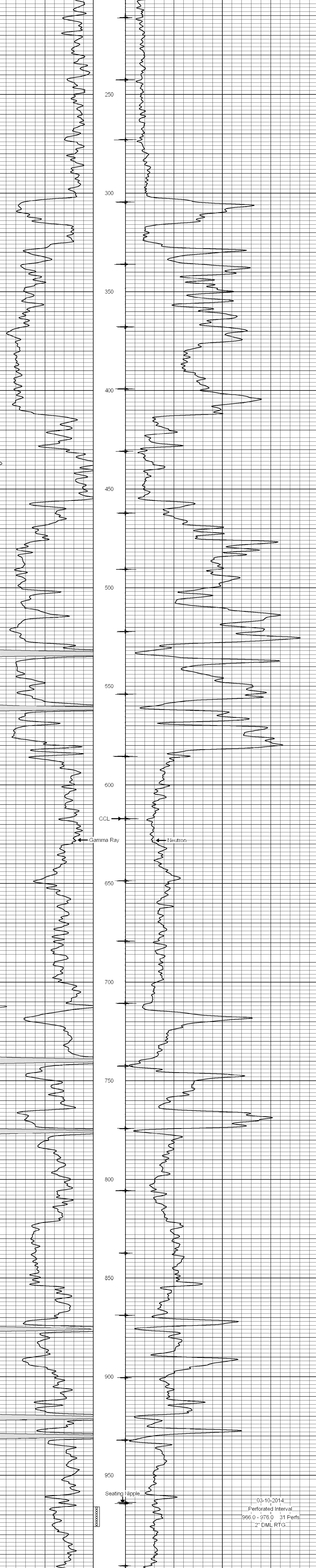
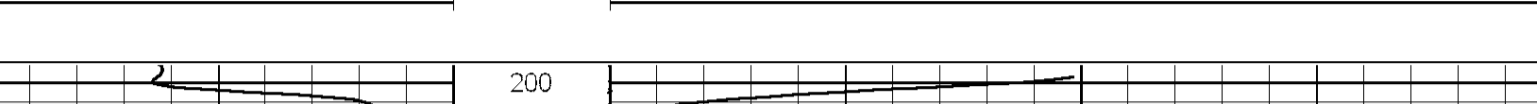
<< Fold Here >>

All interpretations are opinions based on inferences from electrical or other measurements and we cannot and do not guarantee the accuracy or correctness of any interpretation, and we shall not, except in the case of gross or willful negligence on our part, be liable or responsible for any loss, costs, damages, or expenses incurred or sustained by anyone resulting from any interpretation made by any of our officers, agents or employees. These interpretations are also subject to our general terms and conditions set out in our current Price Schedule.

Comments

Drilling Contractor :
Finney Drilling Company

Database File: webb14ra.db
 Dataset Pathname: pass1
 Presentation Format: gr-n-ccl
 Dataset Creation: Tue Feb 25 14:07:45 2014 by Log SCH 111116
 Charted by: Depth in Feet scaled 1:240



03-10-2014
 Perforated Interval
 966.0 - 976.0 31 Perfs
 2" DML RTG