



DUAL INDUCTION
LL3/GR LOG

Company GUS JONES CABLE TOOL SERVICE, LLC.
Well KILL # 6
Field
County ELK
State KANSAS

Company GUS JONES CABLE TOOL SERVICE, LLC.
Well KILL # 6
Field
County ELK State KANSAS

Location: API #: 15-049-22592-0000
NE NE NE NW
322' FNL & 2820' FEL
SEC 34 TWP 31S RGE 12E
Permanent Datum GL Elevation 950'
Log Measured From GL
Drilling Measured From GL
Other Services
CDL/SWN
Elevation
K.B. ---
D.F. ---
G.L. 950'

Date	10-31-2013
Run Number	ONE
Depth Driller	1718'
Depth Logger	1708'
Bottom Logged Interval	1706'
Top Log Interval	SURFACE
Casing Driller	8 5/8" @ 42'
Casing Logger	8 5/8" @ 42'
Bit Size	6 3/4"
Type Fluid in Hole	WATER
Density / Viscosity	
pH / Fluid Loss	
Source of Sample	
Rm @ Meas. Temp	
Rmf @ Meas. Temp	
Rmc @ Meas. Temp	
Source of Rmf / Rmc	
Rm @ BHT	
Time Circulation Stopped	
Time Logger on Bottom	
Maximum Recorded Temperature	
Equipment Number	OW2
Location	HOMINY OK
Recorded By	LOWERY
Witnessed By	MR. JONES

<<< Fold Here >>>

All interpretations are opinions based on inferences from electrical or other measurements and we cannot and do not guarantee the accuracy or correctness of any interpretation, and we shall not, except in the case of gross or willful negligence on our part, be liable or responsible for any loss, costs, damages, or expenses incurred or sustained by anyone resulting from any interpretation made by any of our officers, agents or employees. These interpretations are also subject to our general terms and conditions set out in our current Price Schedule.

Comments

OW2-8480
CREW : SHAMBLES



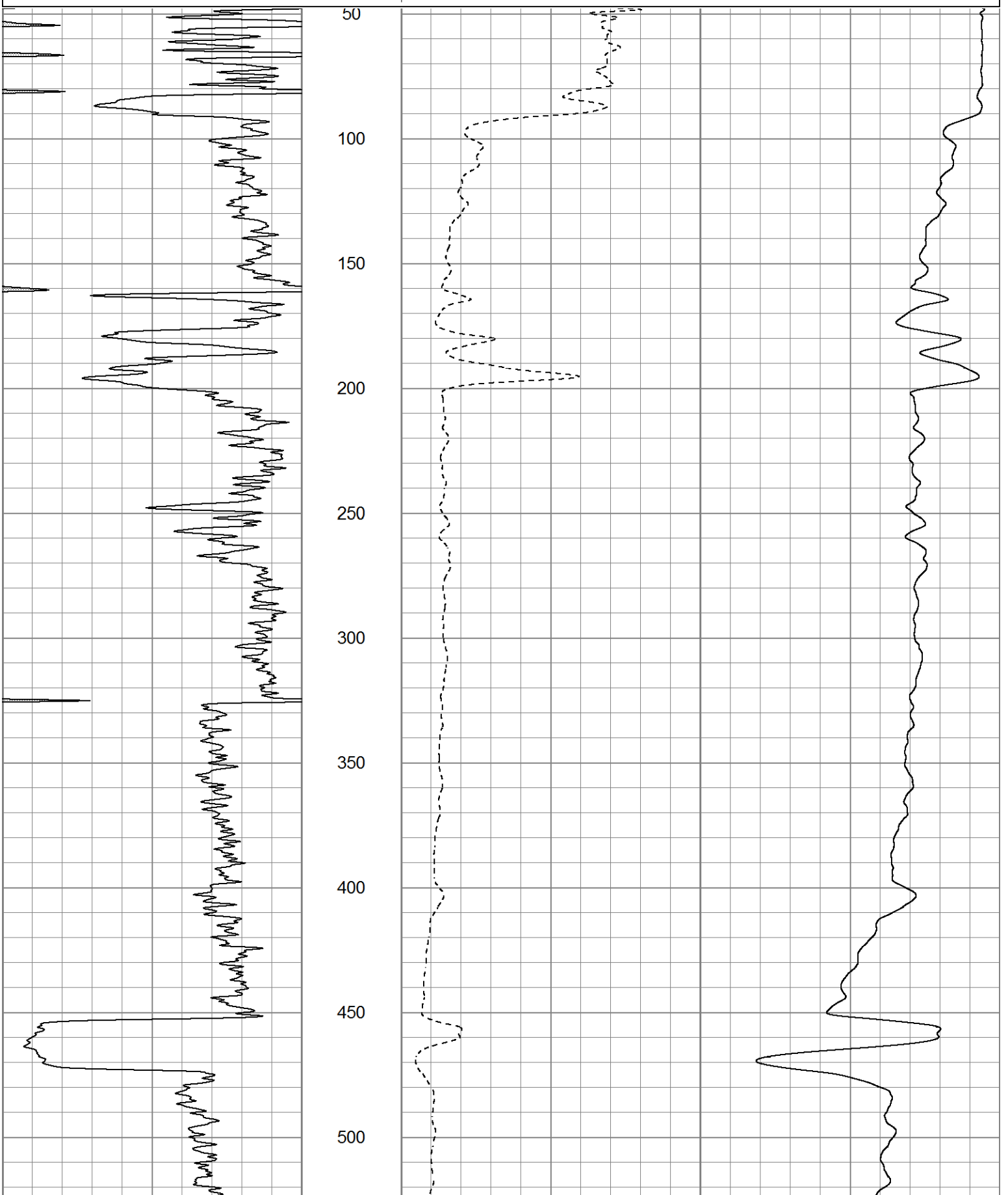
2" DIL SECTION

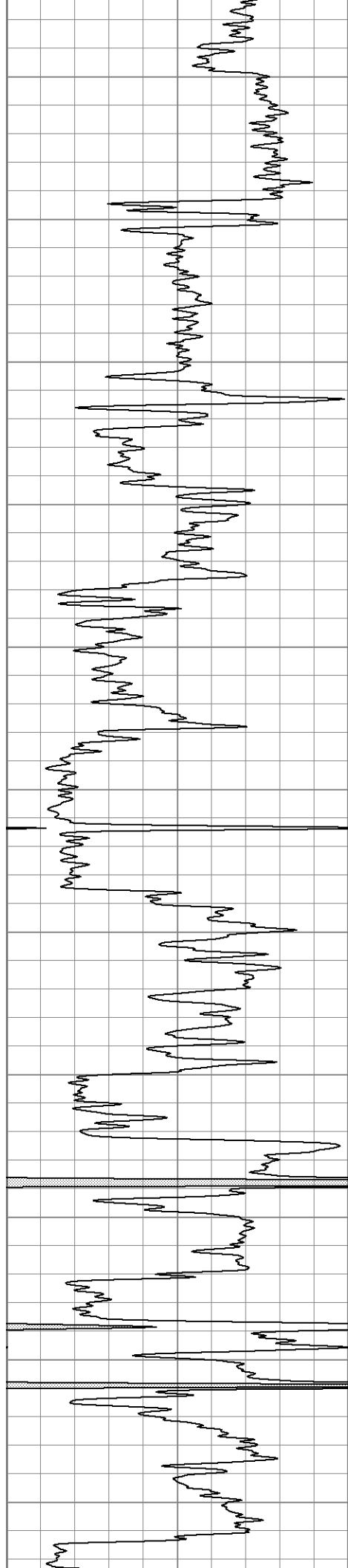
Database File ow2-8480 gus jones.db
Dataset Pathname DIL/pass1.2
Presentation Format dil2airn
Dataset Creation Thu Oct 31 12:39:18 2013
Charted by Depth in Feet scaled 1:600

0 GR (GAPI) 150

0 RILD (Ohm-m) 50

1000 CILD (mmho/m) 0





550

600

650

700

750

800

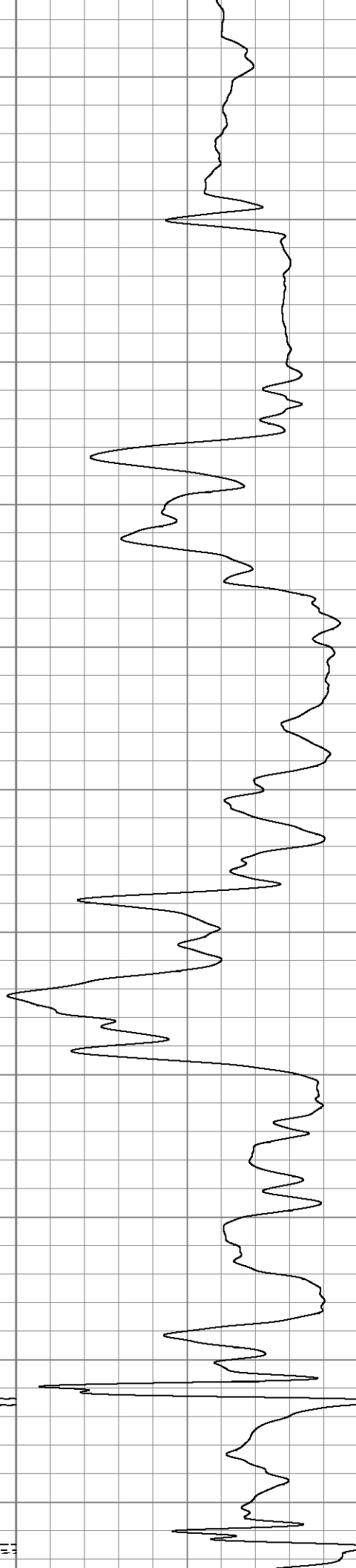
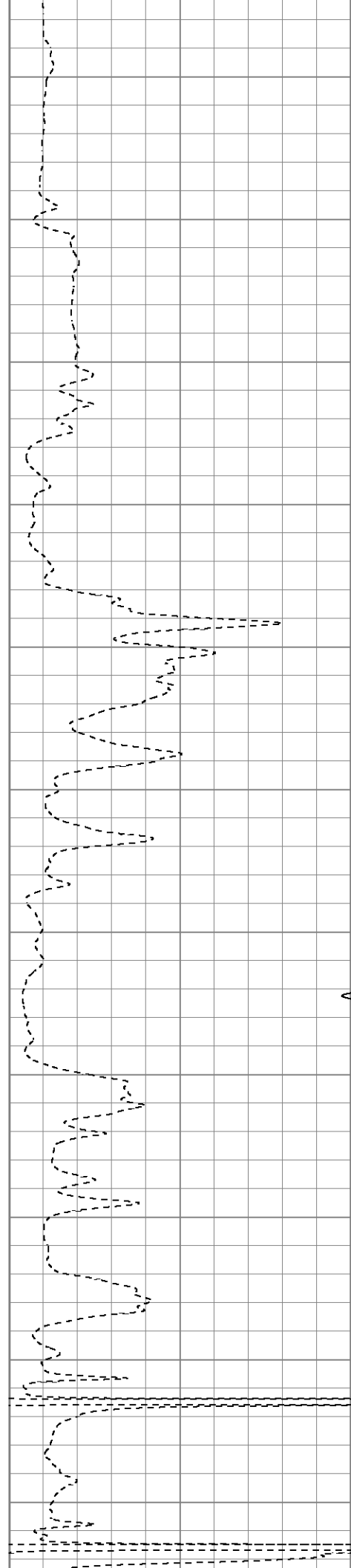
850

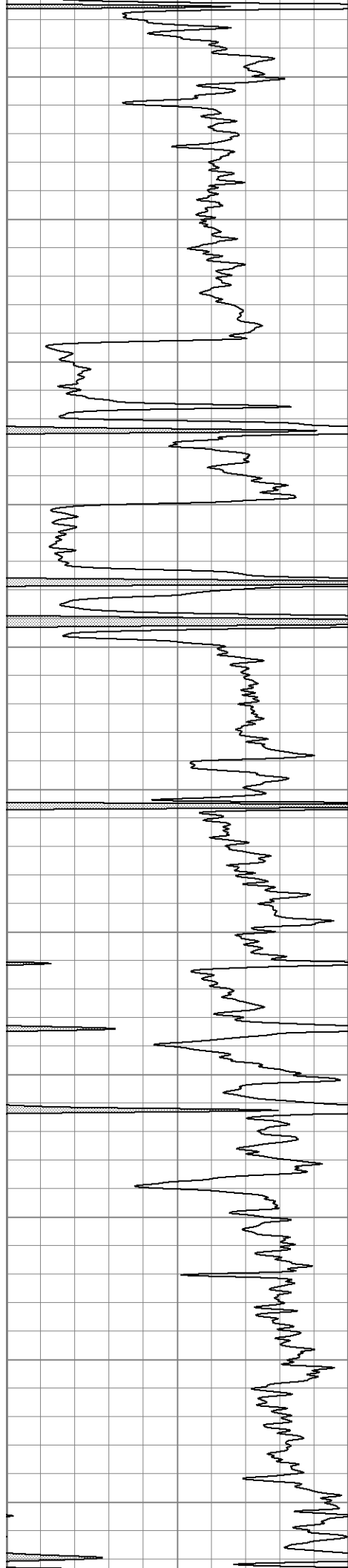
900

950

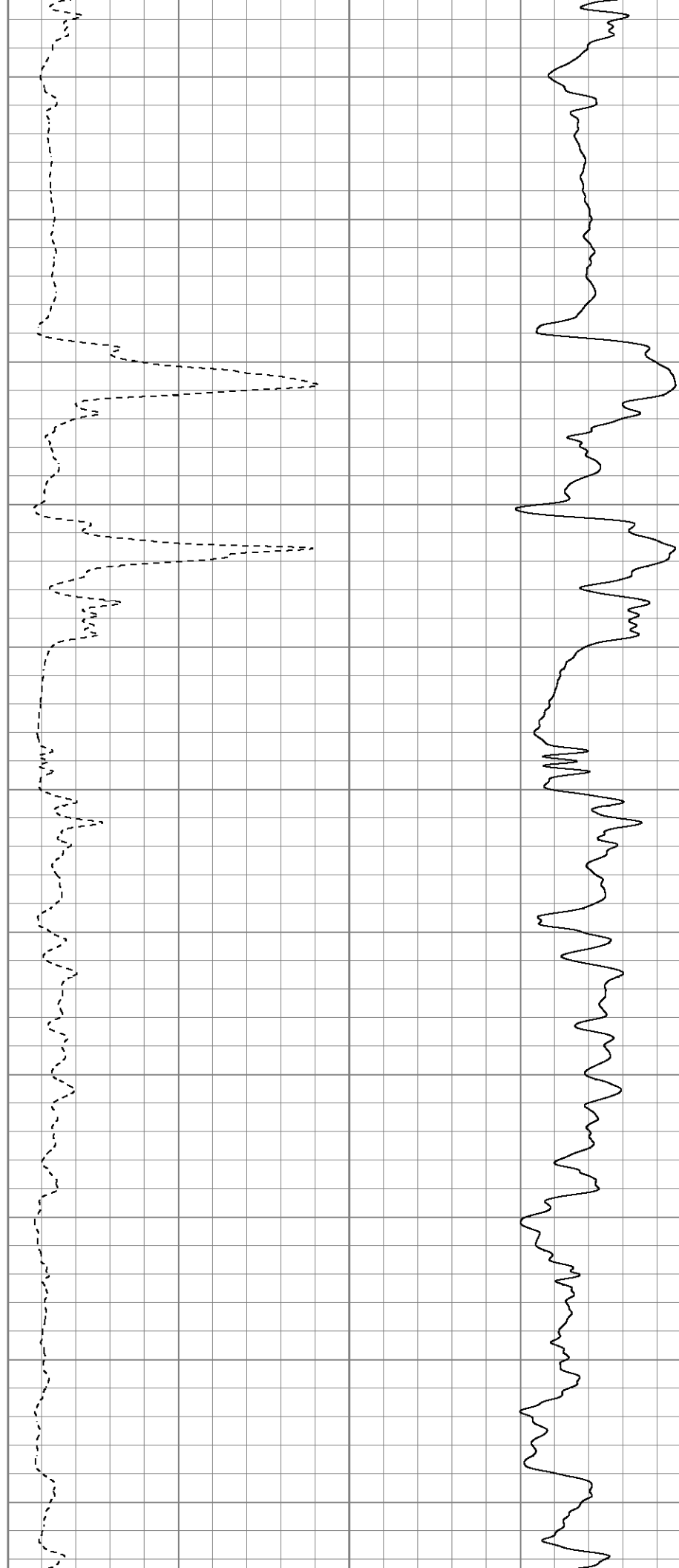
1000

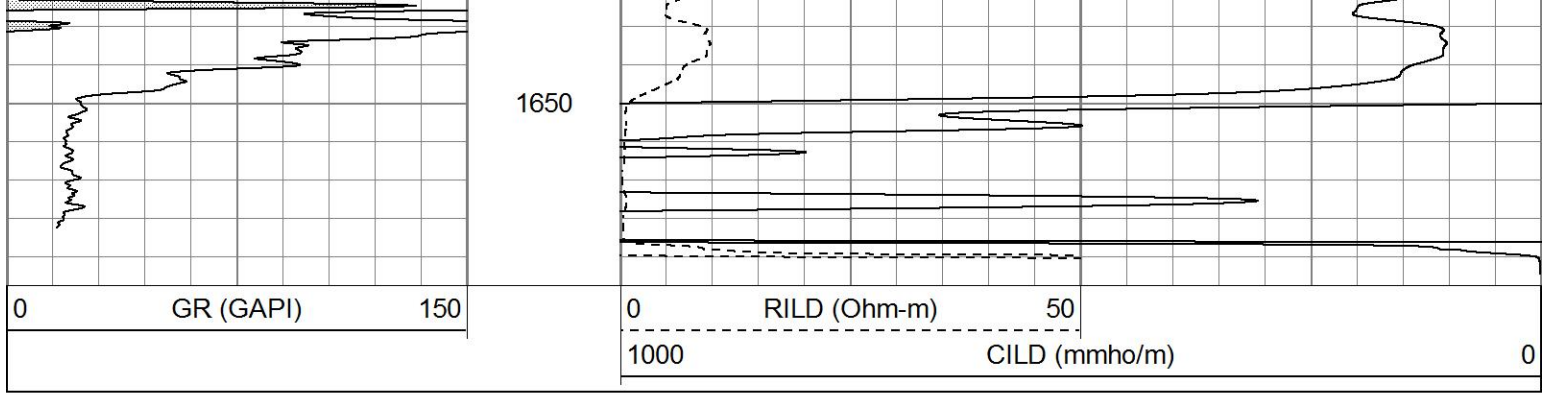
1050





1100
1150
1200
1250
1300
1350
1400
1450
1500
1550
1600

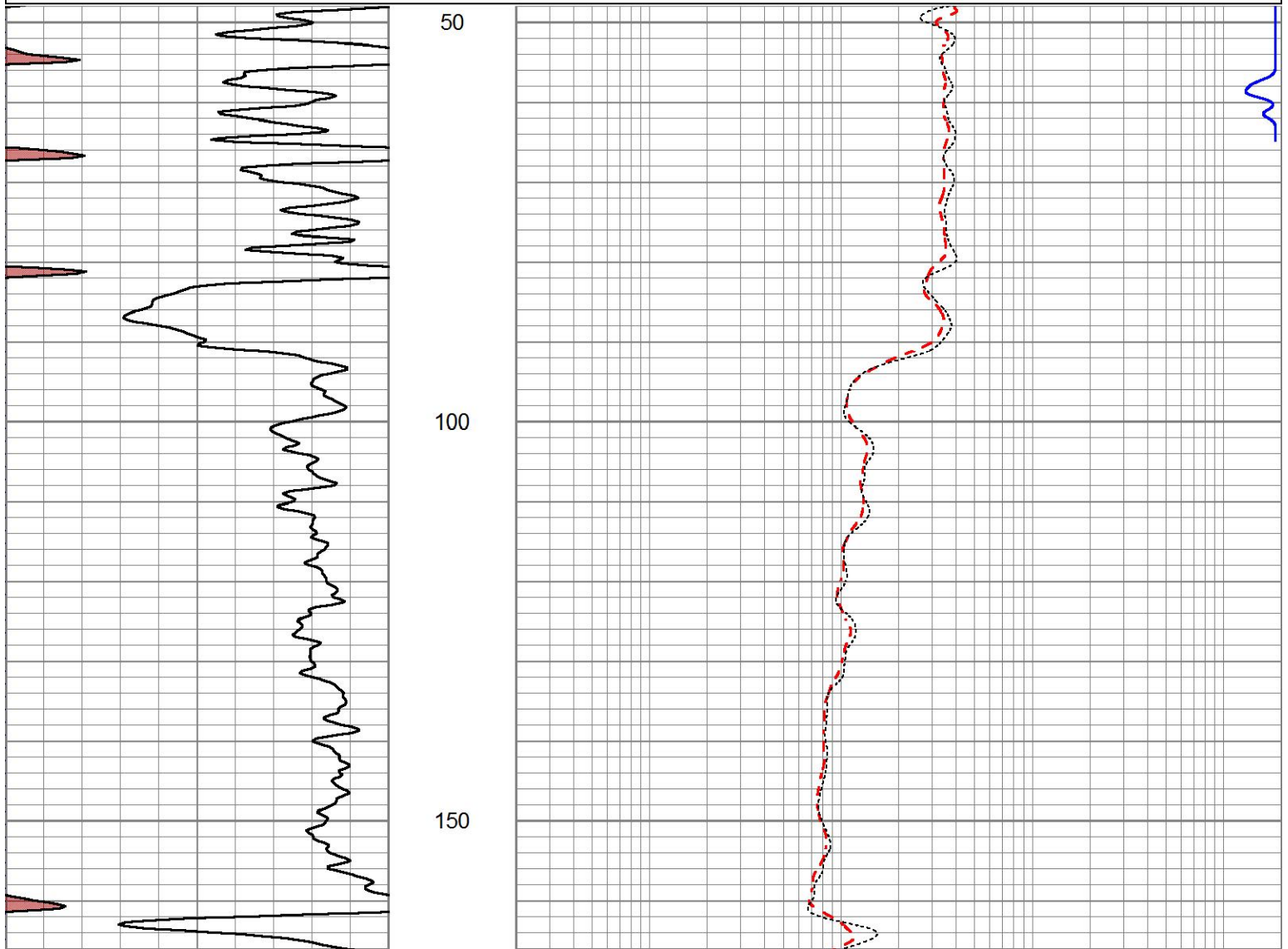


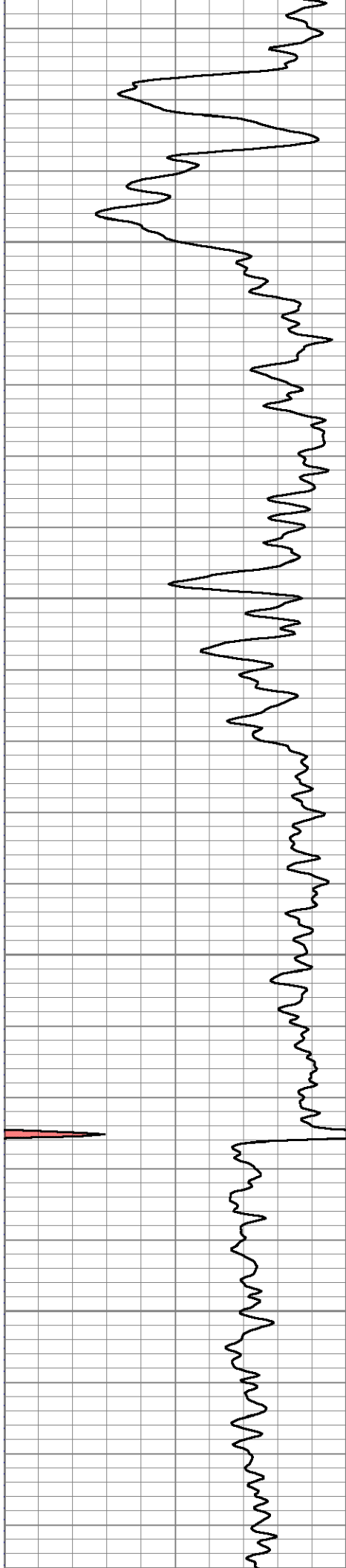


5" DIL SECTION

Database File ow2-8480 gus jones.db
 Dataset Pathname DIL/pass1.1
 Presentation Format dil5air
 Dataset Creation Thu Oct 31 12:39:12 2013
 Charted by Depth in Feet scaled 1:240

0	GR (GAPI)	150	0.2	RILD (Ohm-m)	2000
			0.2	RLL3 (Ohm-m)	2000
			0.2	RILM (Ohm-m)	2000



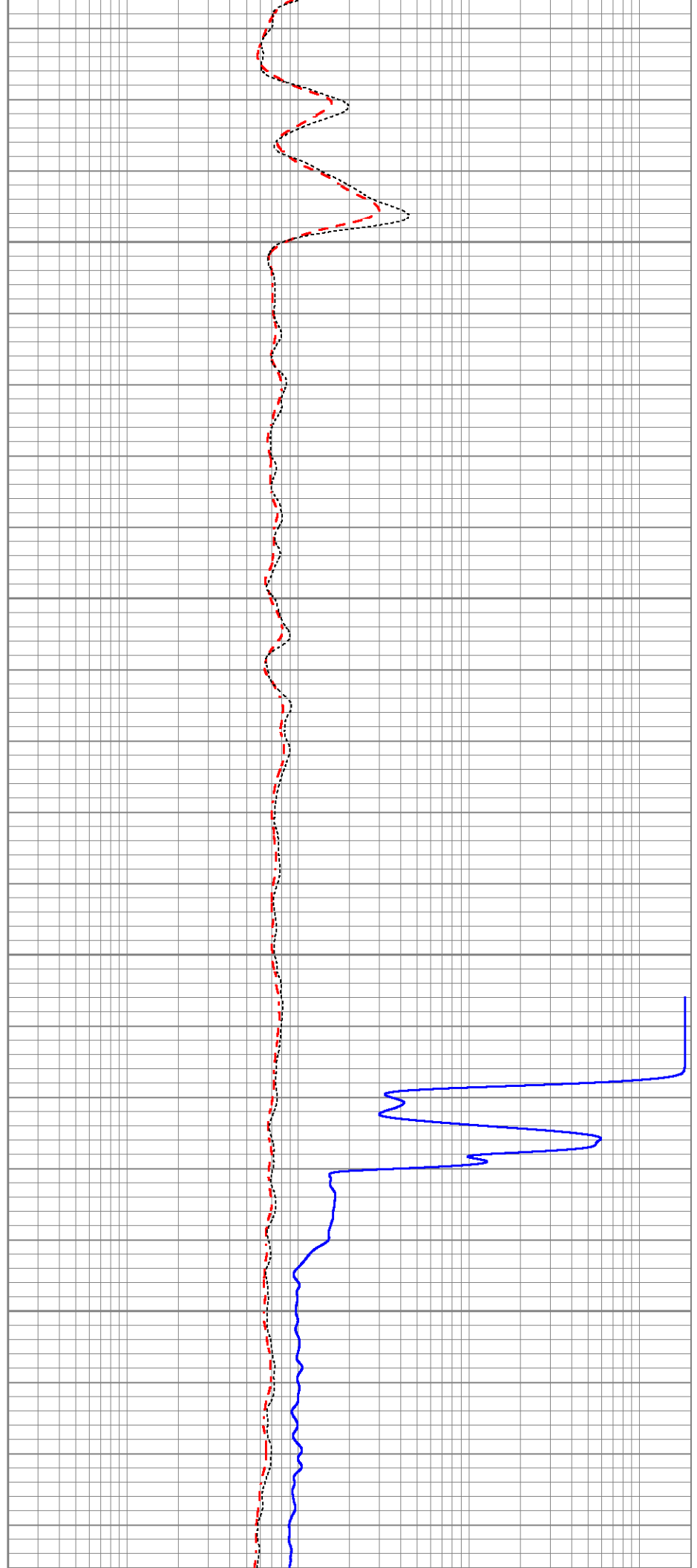


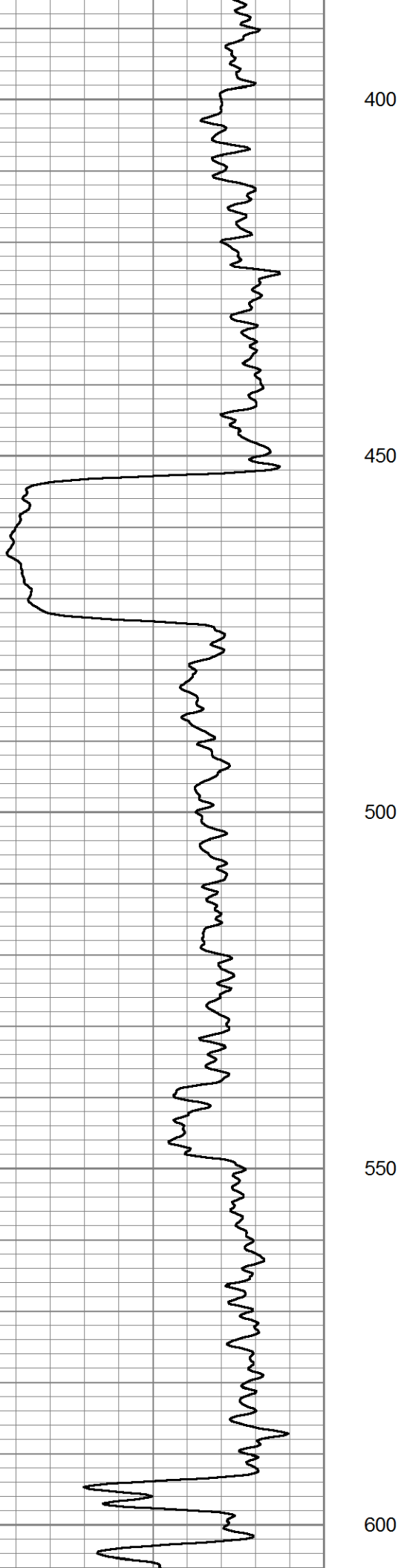
200

250

300

350





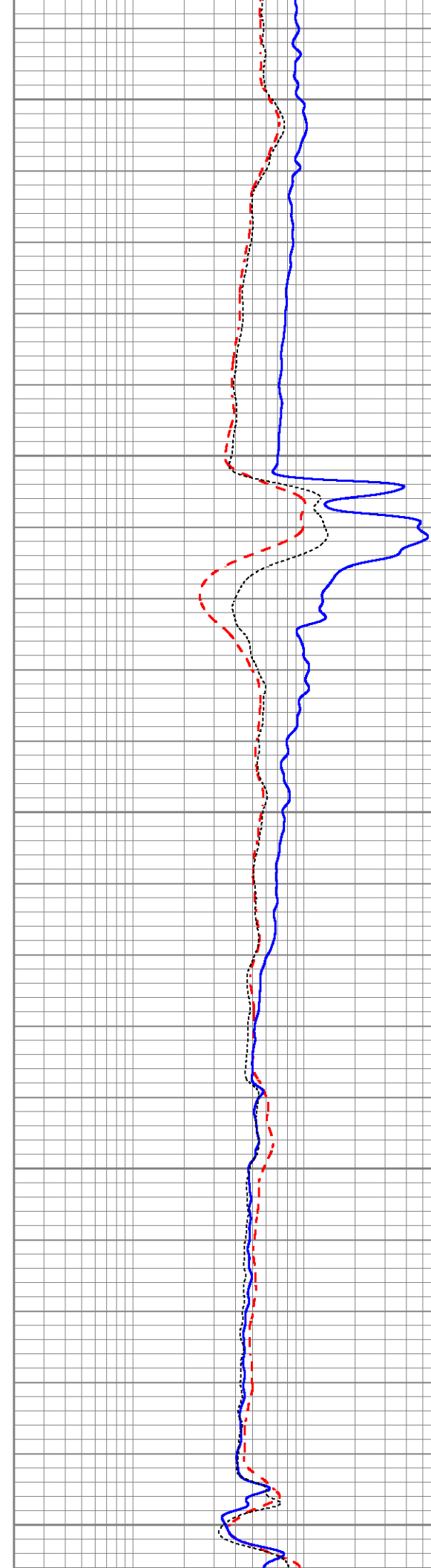
400

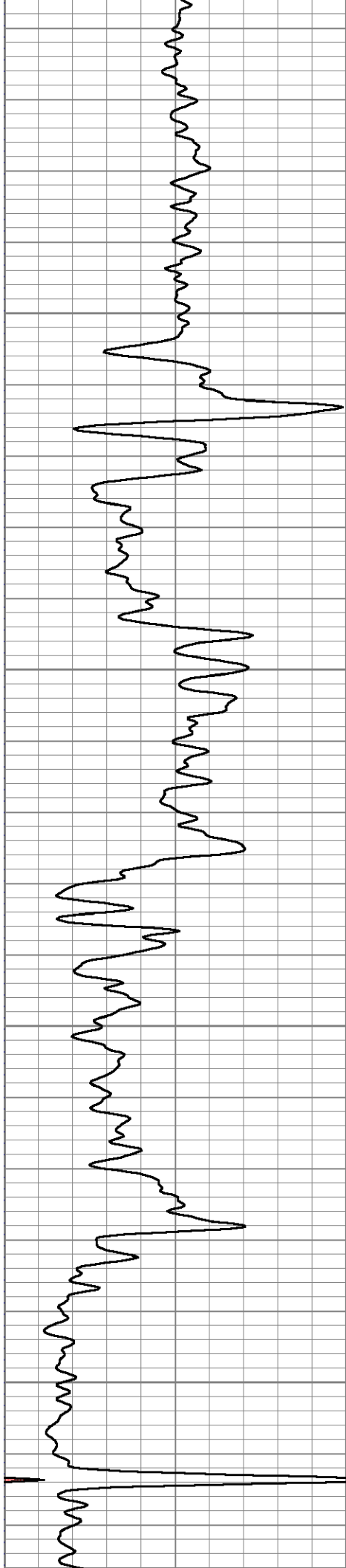
450

500

550

600



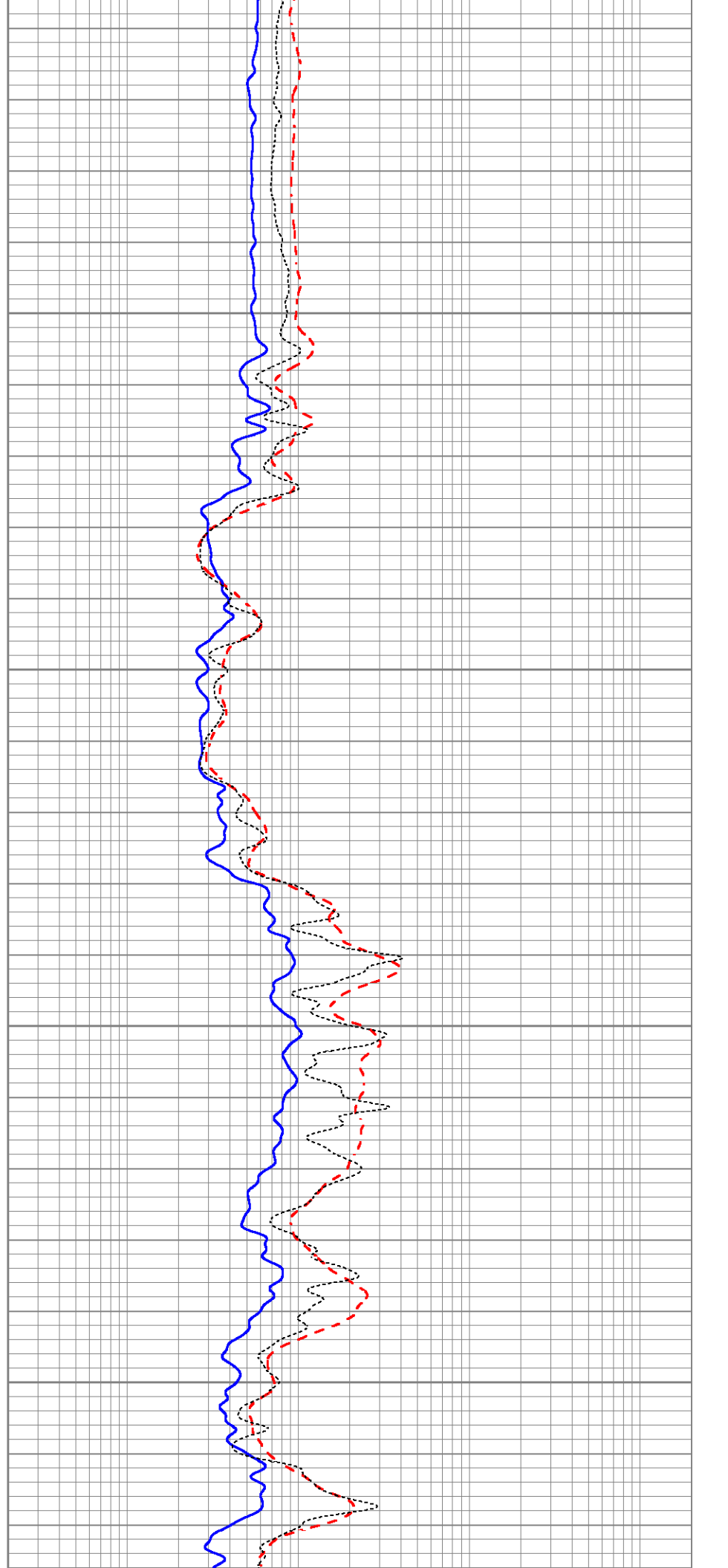


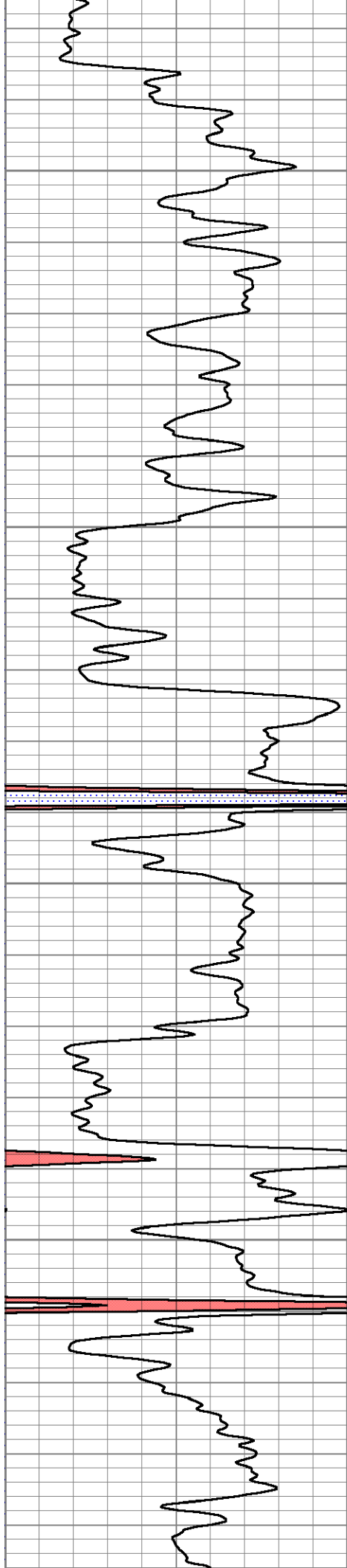
650

700

750

800



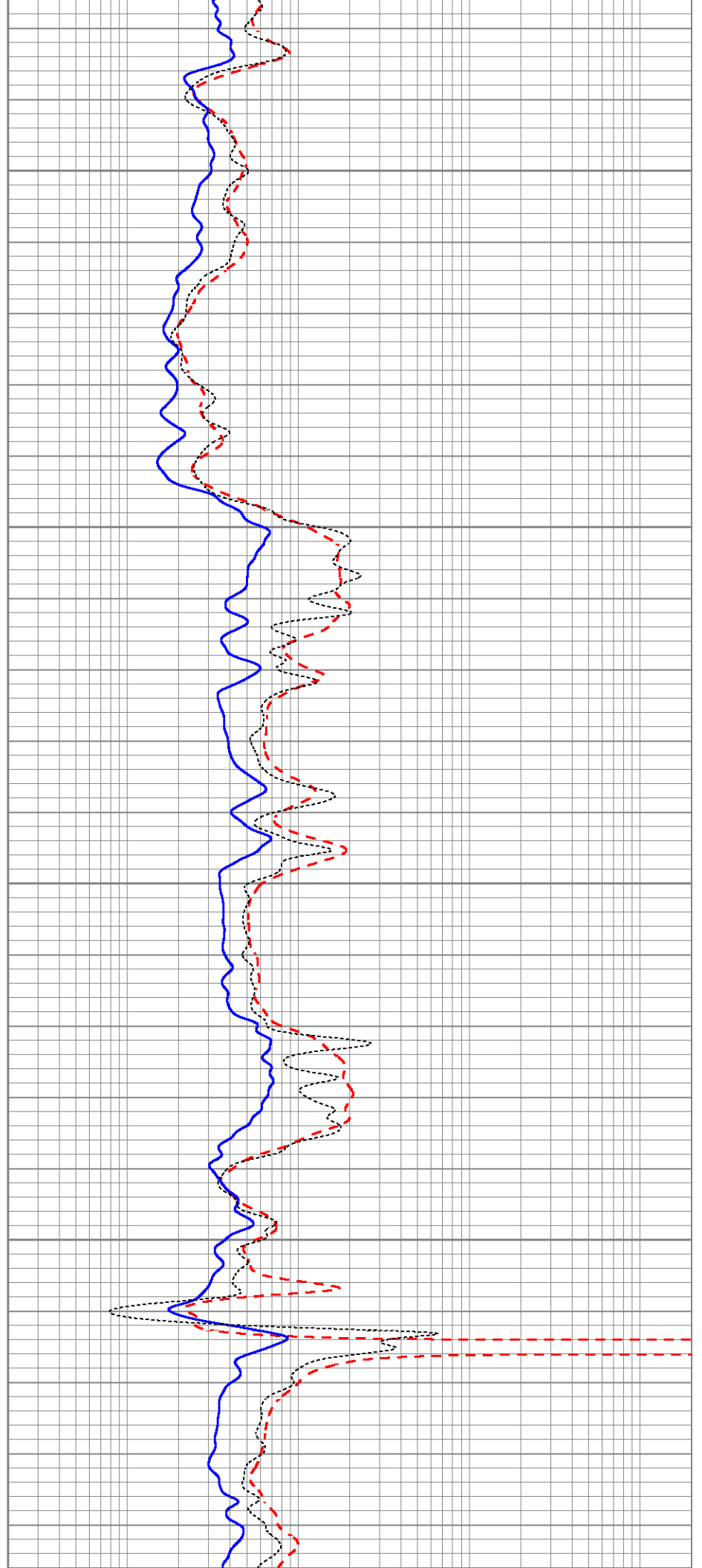


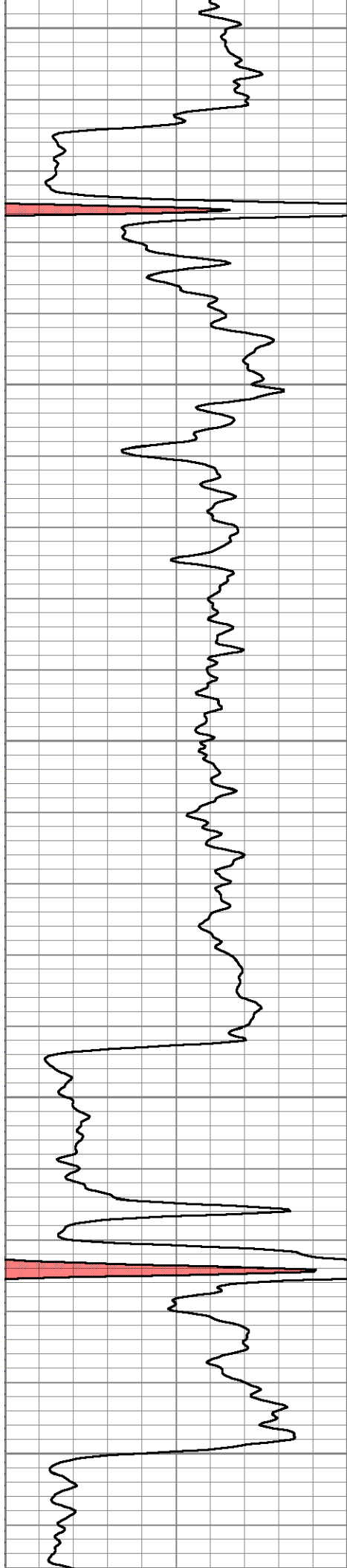
850

900

950

1000





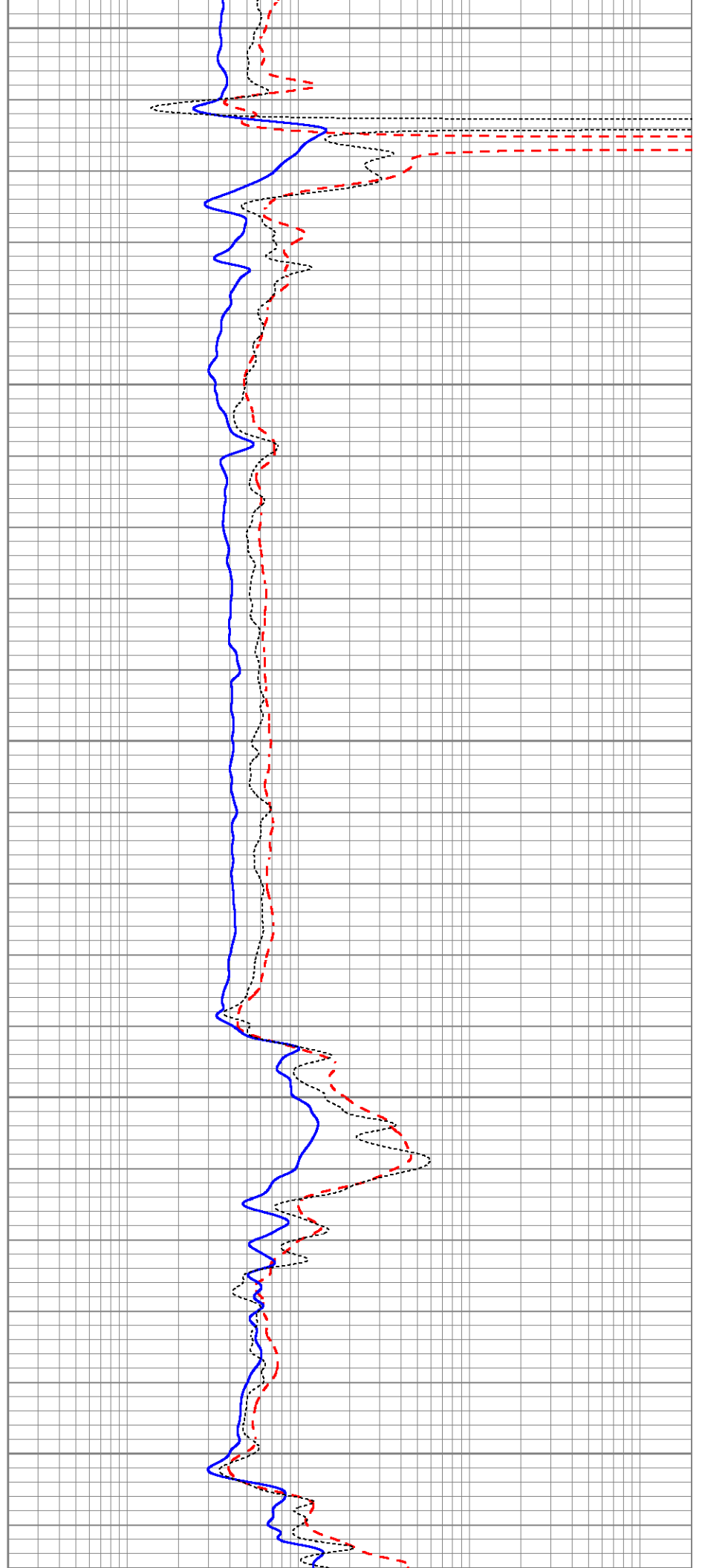
1050

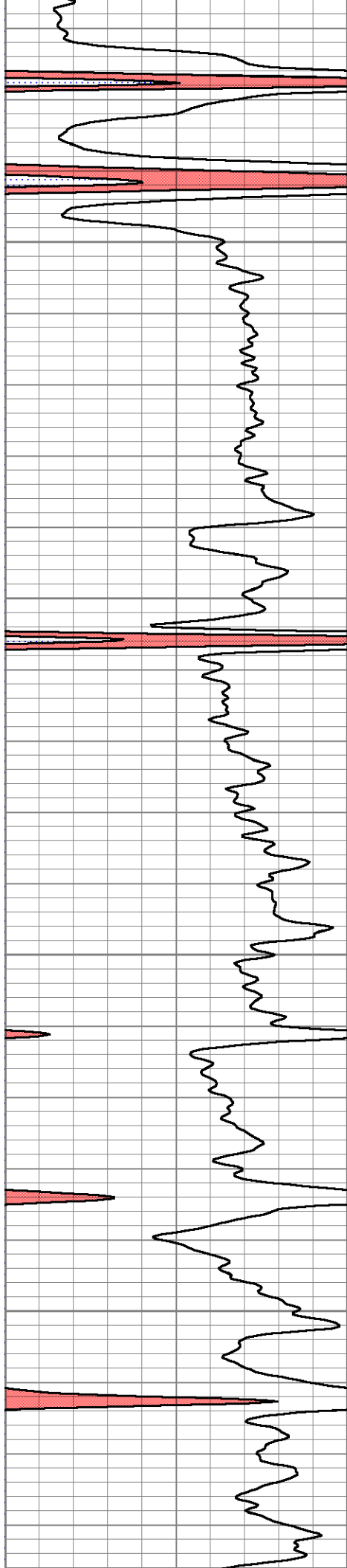
1100

1150

1200

1250



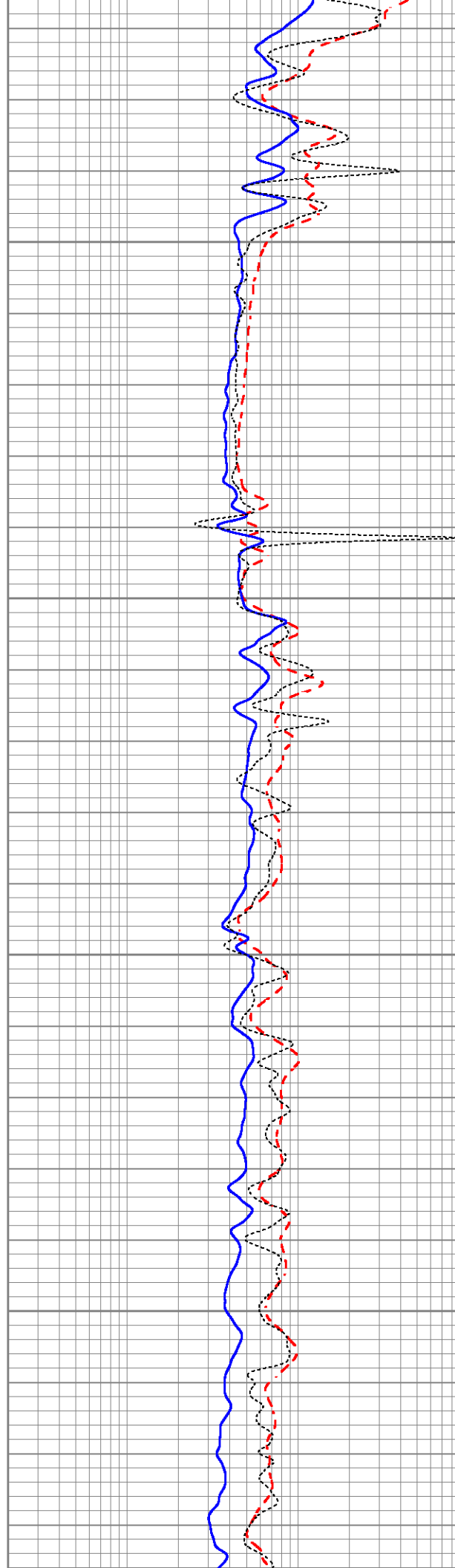


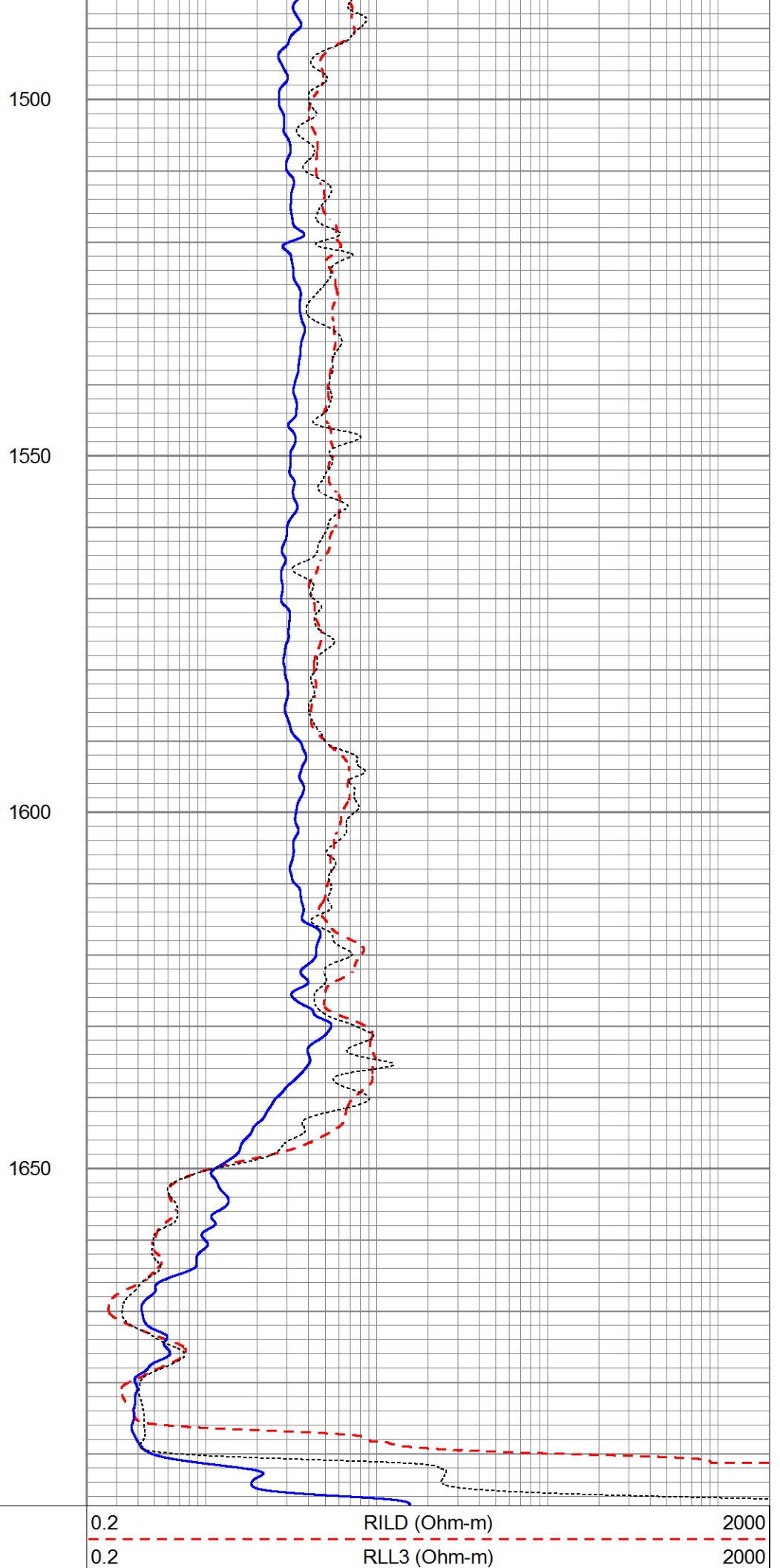
1300





1350

1400

1450





Sensor	Offset (ft)	Schematic	Description	Length (ft)	O.D. (in)	Weight (lb)
			Cable-CableHead Isulation Sub	1.42	3.00	20.00
SP CILD	10.92 10.92		DIL-GEAR (158) Dual Induction Electrical Log	21.36	4.00	345.00
CILM	7.00					
RLL3	1.67					

Dataset: ow2-8480 gus jones.db: field/well/DIL/pass1
Total length: 22.78 ft
Total weight: 365.00 lb
O.D.: 4.00 in