



MIDWEST SURVEYS
 LOGGING - PERFORATING - CONSULTING SERVICES
 P.O. Box 68, Osawatomie, KS 68064
 913 / 755 - 2128

GAMMA RAY / NEUTRON / CCL

File No. _____

Company **RJ Enterprises**

Well **Patton No. 5-A**

Field **Centerville**

County **Anderson** State **Kansas**

Location **4807 FSL & 2168 FEL**

Sec. **22** Twp. **21S** Rge. **21E**

Permanent Datum **GL** Elevation **NA** Other Services Perforate

Log Measured From **GL** K/B NA D/F NA

Drilling Measured From **GL** G/L NA

Date **12-17-2013**

Run Number **One**

Depth Driller **651.0**

Depth Logger **643.0**

Bottom Logged Interval **642.0**

Top Log Interval **20.0**

Fluid Level **Full**

Type Fluid **Water**

Density / Viscosity **NA**

Salinity - PPM Cl **NA**

Estimated Cement Top		Location	
Equipment No.	102	Osawatomie	
Recorded By	Gary Wifridsch		
Witnessed By	Jason Kent		

BORE-HOLE RECORD		CASING RECORD	
RUIN No.	BIT	FROM	TO
One	9.875"	0.0	20.0
Two	5.625"	20.0	645.1
	SIZE	WGT.	FROM
	7.00"	17.0 #	0.0
	2.875"	6.5 #	0.0

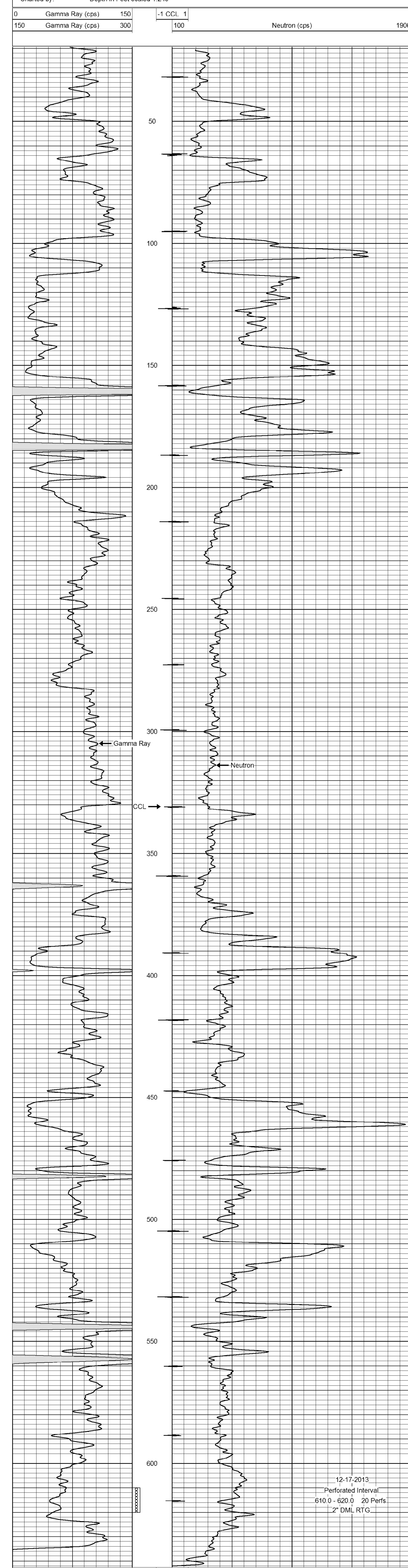
<<< Fold Here >>>

All interpretations are opinions based on inferences from electrical or other measurements and we cannot and do not guarantee the accuracy or correctness of any interpretation, and we shall not, except in the case of gross or willful negligence on our part, be liable or responsible for any loss, costs, damages, or expenses incurred or sustained by anyone resulting from any interpretation made by any of our officers, agents or employees. These interpretations are also subject to our general terms and conditions set out in our current Price Schedule.

Comments

Drilling Contractor :
RJ Enterprises

Database File: patton5a.db
 Dataset Pathname: pass1
 Presentation Format: gr-n-ccl
 Dataset Creation: Tue Dec 17 09:41:51 2013 by Log SCH 111116
 Charted by: Depth in Feet scaled 1:240



12-17-2013
 Perforated Interval
 610.0 - 620.0 20 Perfs.
 2" DML RTG

Gamma Ray (cps)		Neutron (cps)	
0	150	100	1900
150	300	-1 CCL 1	