



**COMPENSATED DENSITY  
SIDEWALL NEUTRON LOG**

Company GUS JONES CABLE TOOL SERVICE, LLC.  
Well KILL # 6  
Field  
County ELK  
State KANSAS

Company GUS JONES CABLE TOOL SERVICE, LLC.  
Well KILL # 6  
Field  
County ELK State KANSAS

Location: API #: 15-049-22592-0000  
NE NE NE NW  
322' FNL & 2820' FEL  
SEC 34 TWP 31S RGE 12E  
Permanent Datum GL Elevation 950'  
Log Measured From GL  
Drilling Measured From GL  
Other Services  
DIL  
Elevation  
K.B. ---  
D.F. ---  
G.L. 950'

Date	10-31-2013
Run Number	ONE
Depth Driller	1718'
Depth Logger	1708'
Bottom Logged Interval	1706'
Top Log Interval	SURFACE
Casing Driller	8 5/8" @ 42'
Casing Logger	8 5/8" @ 42'
Bit Size	6 3/4"
Type Fluid in Hole	WATER
Density / Viscosity	
pH / Fluid Loss	
Source of Sample	
Rm @ Meas. Temp	
Rmf @ Meas. Temp	
Rmc @ Meas. Temp	
Source of Rmf / Rmc	
Rm @ BHT	
Time Circulation Stopped	
Time Logger on Bottom	
Maximum Recorded Temperature	
Equipment Number	OW2
Location	HOMINY, OK
Recorded By	LOWERY
Witnessed By	MR. JONES

<<< Fold Here >>>

All interpretations are opinions based on inferences from electrical or other measurements and we cannot and do not guarantee the accuracy or correctness of any interpretation, and we shall not, except in the case of gross or willful negligence on our part, be liable or responsible for any loss, costs, damages, or expenses incurred or sustained by anyone resulting from any interpretation made by any of our officers, agents or employees. These interpretations are also subject to our general terms and conditions set out in our current Price Schedule.

Comments

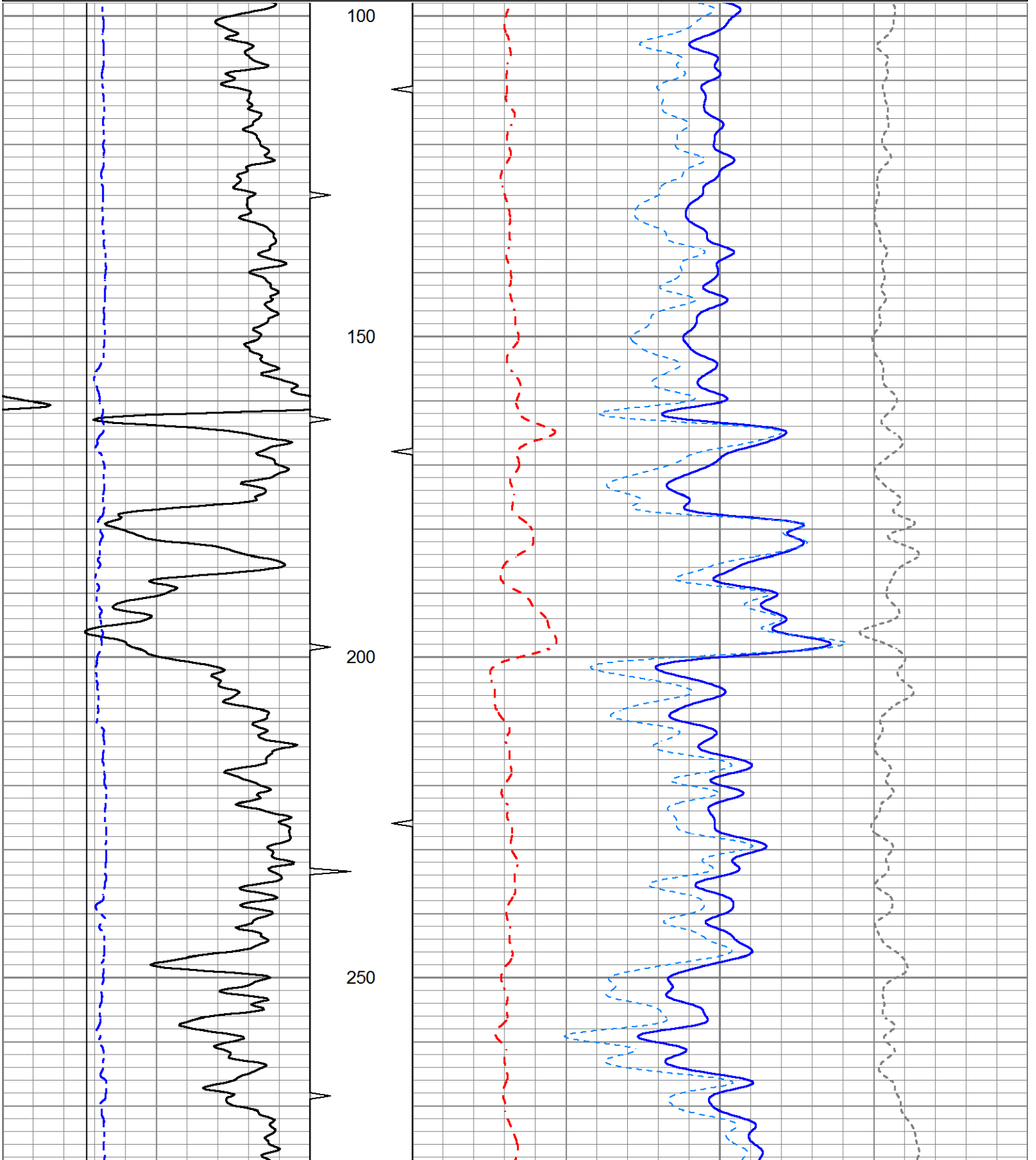
OW2-8480  
MATRIX LIMESTONE 2.71 G/CC  
ABHV COMPUTED WITH 4 1/2" CASING  
  
CREW : SHAMBLES

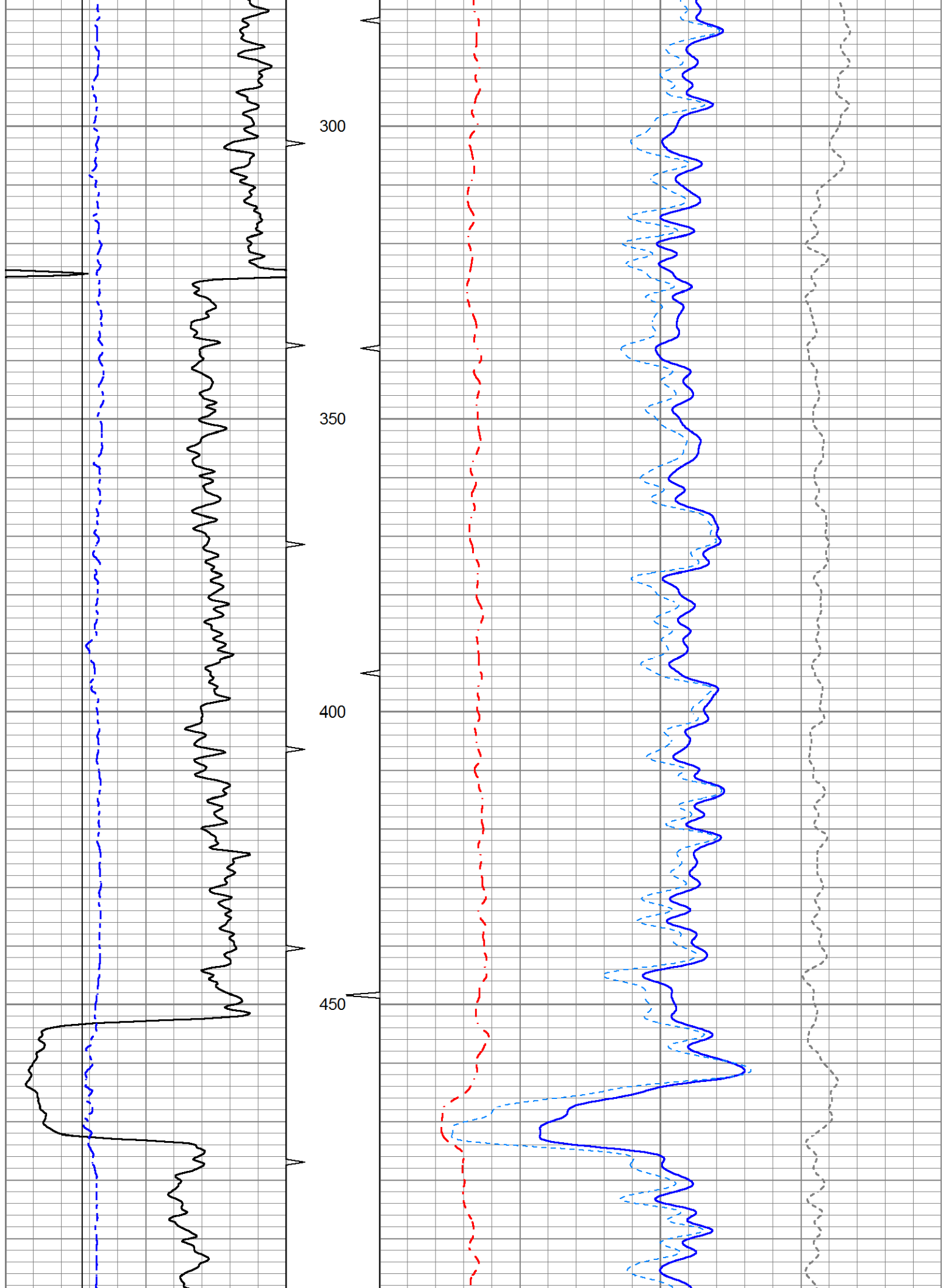


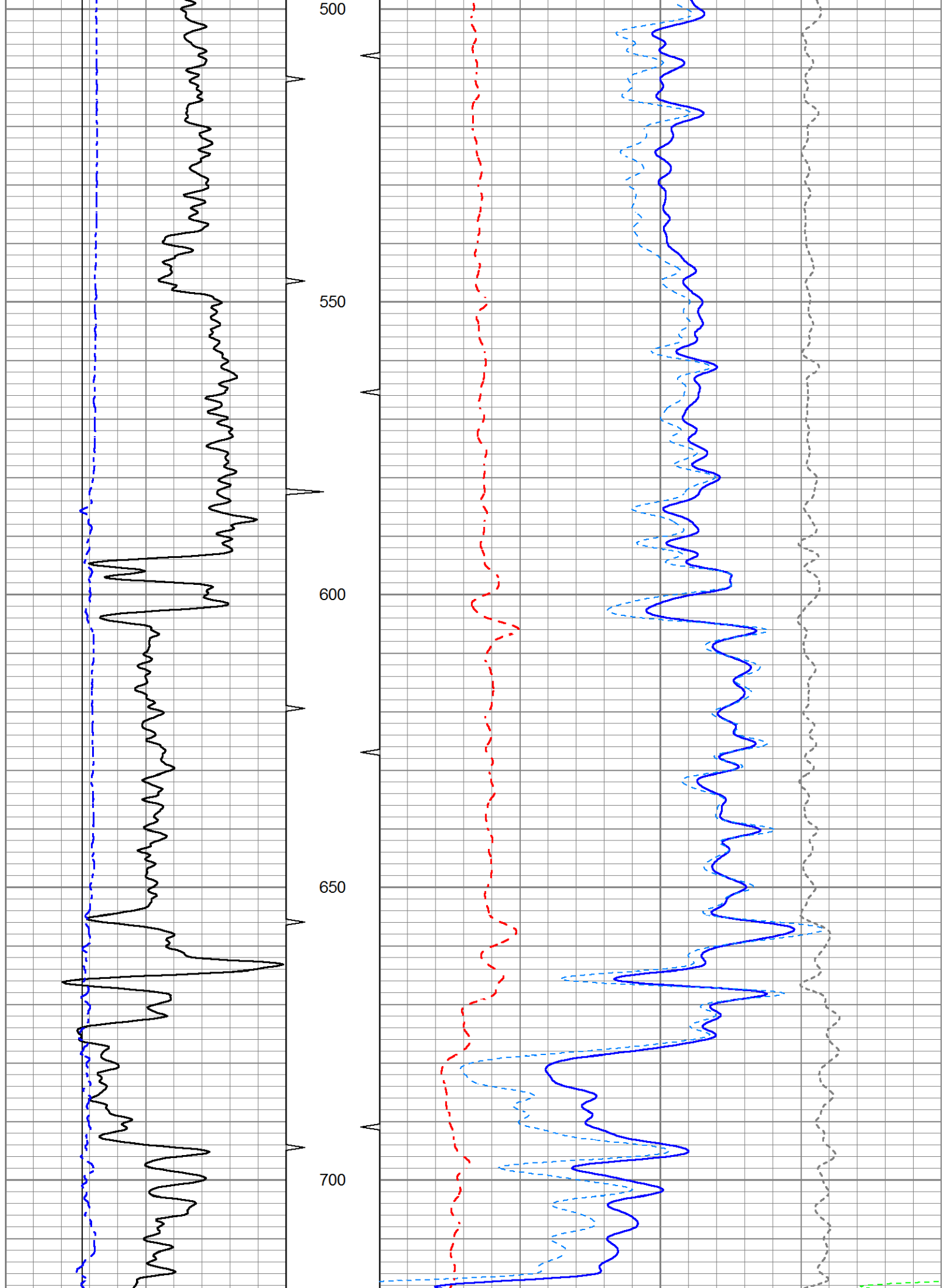
# 5" LITHO SECTION

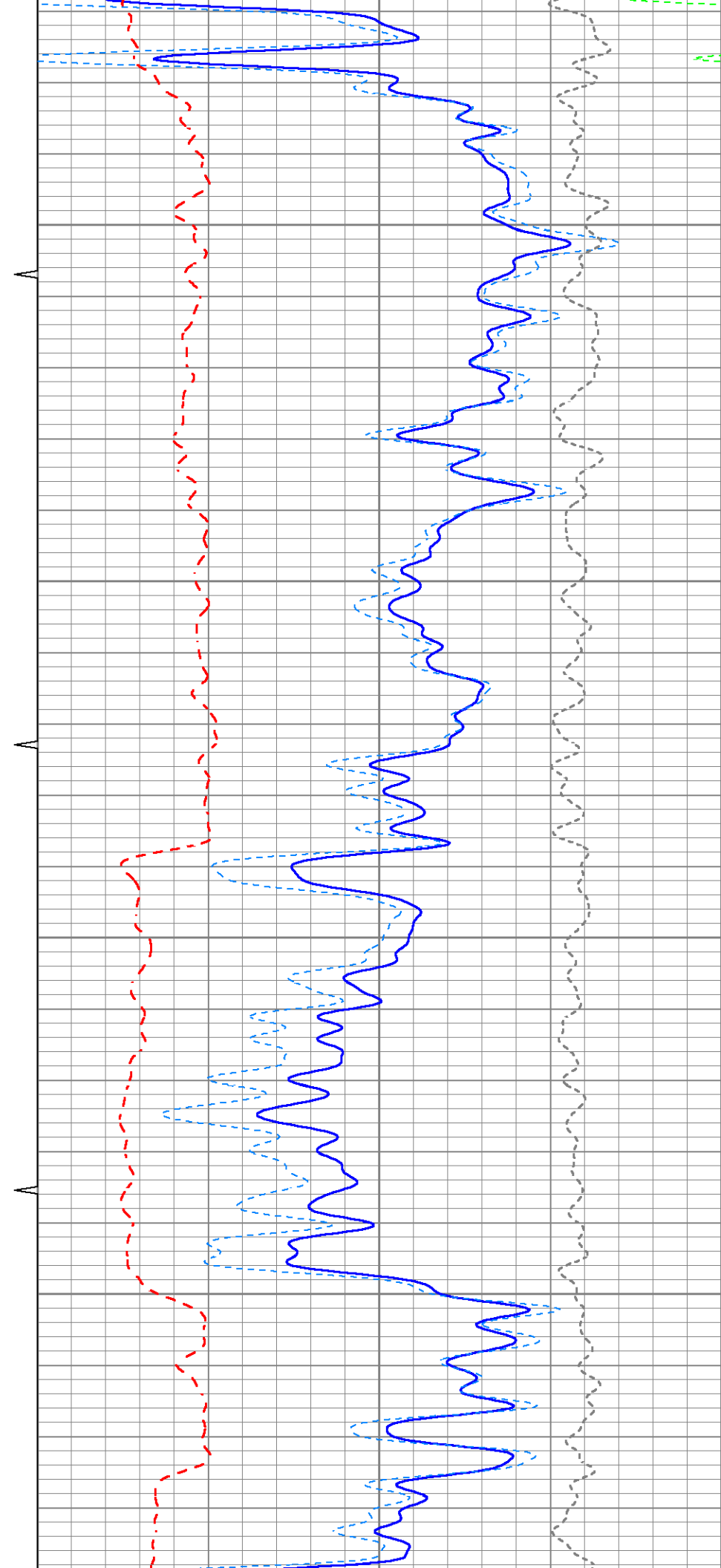
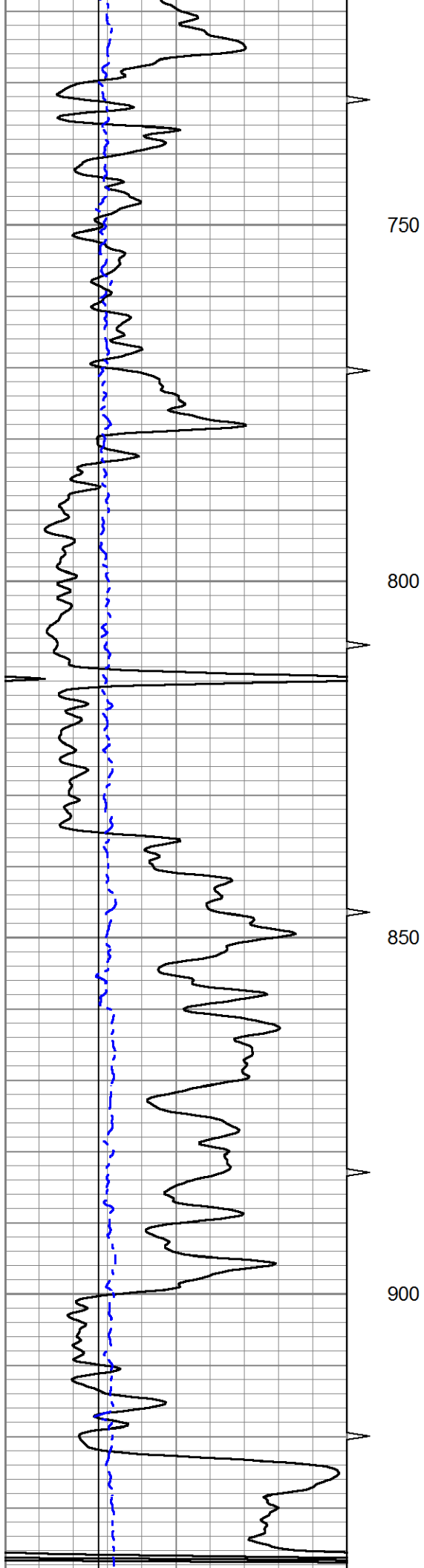
Database File ow2-8480 gus jones.db  
 Dataset Pathname LDT/pass1.2  
 Presentation Format lith  
 Dataset Creation Thu Oct 31 12:39:05 2013  
 Charted by Depth in Feet scaled 1:240

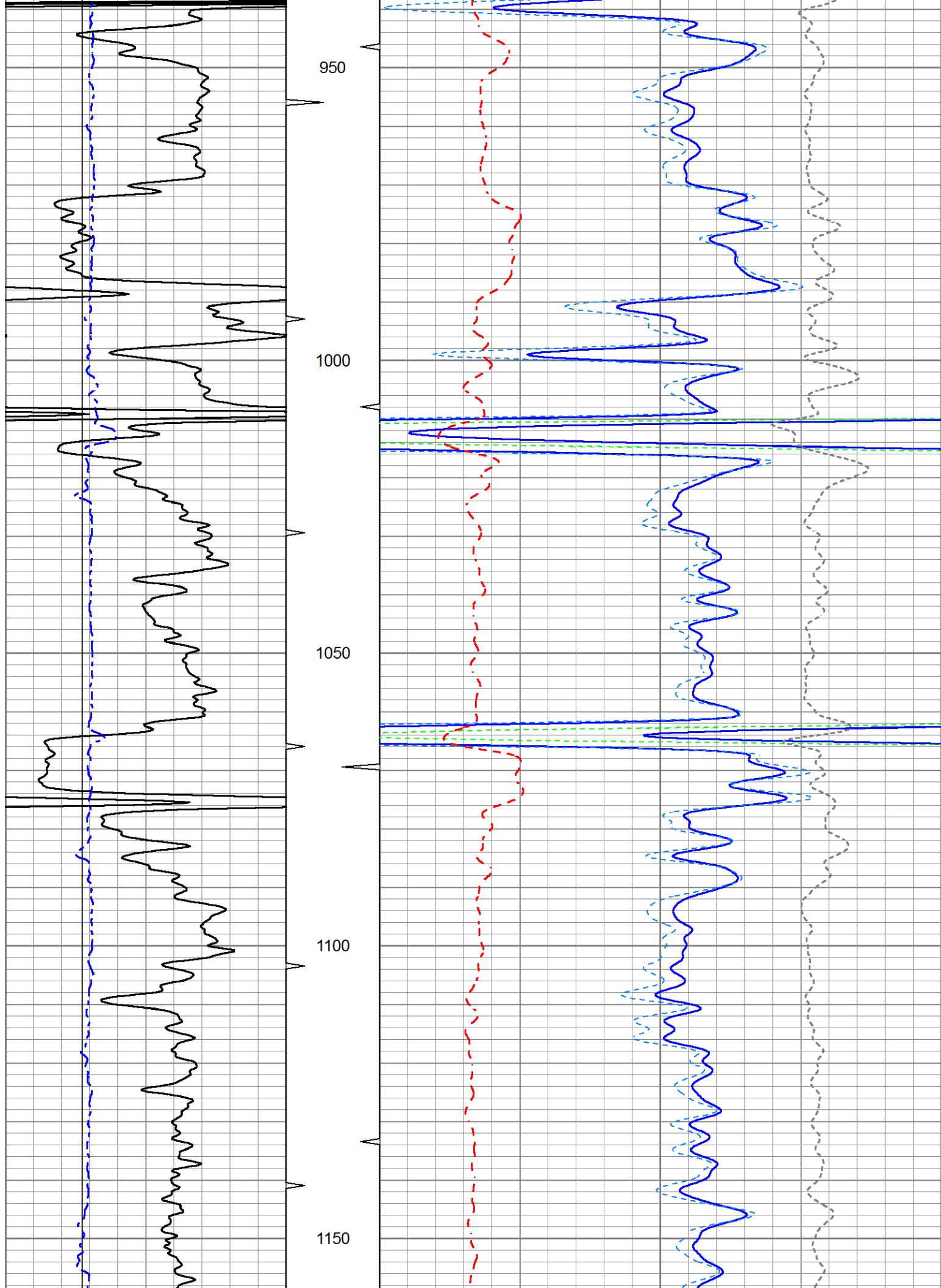
0	Gamma Ray (GAPI)	150	TBHV	2	Bulk Density (g/cc)	3
4	BOREID (in)	14	AVTX	30	Density Porosity (pu)	-10
4	Density Caliper (in)	14		0	Pe	10
					-0.5	Correction (g/cc)
						0.5

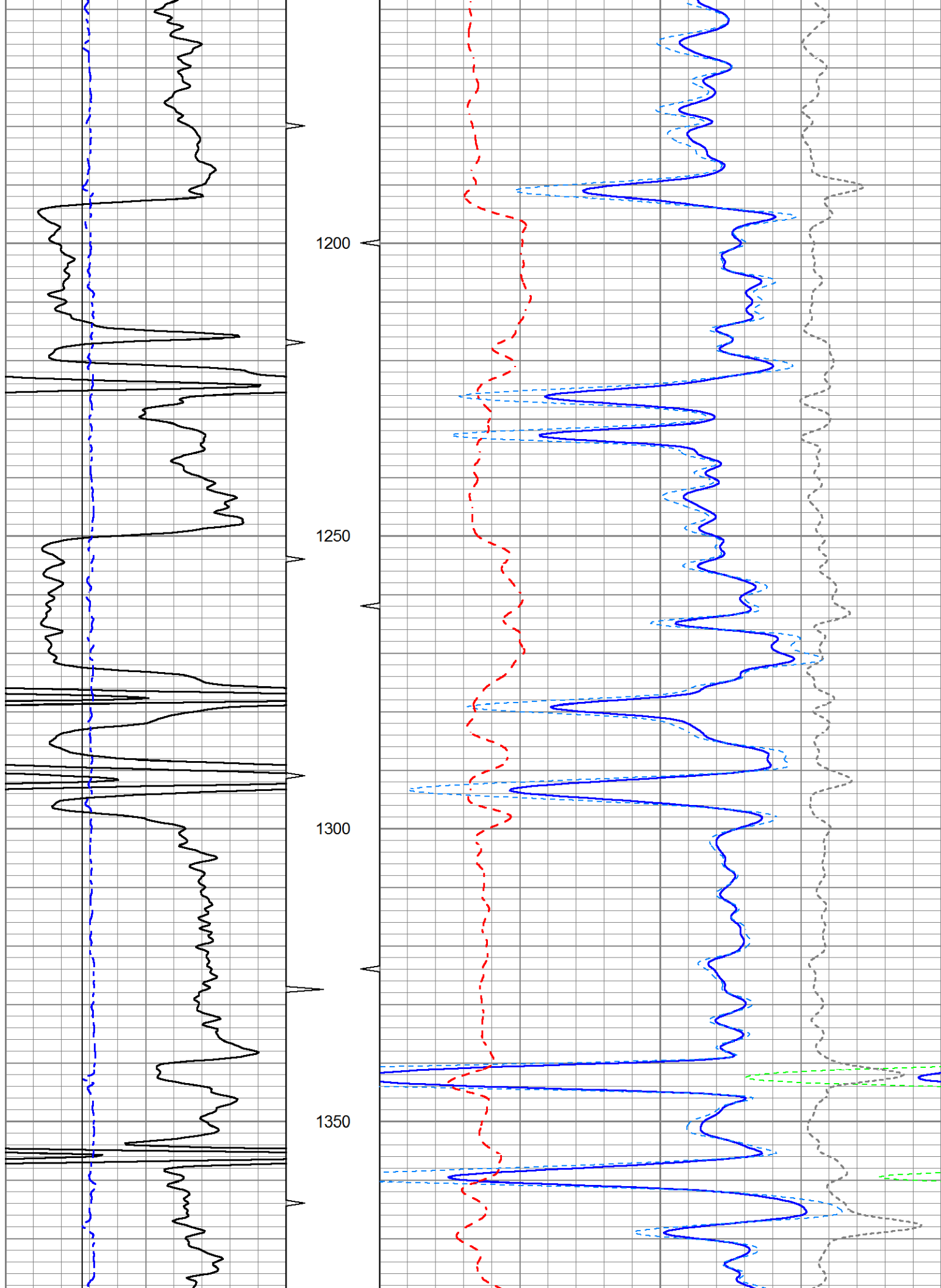


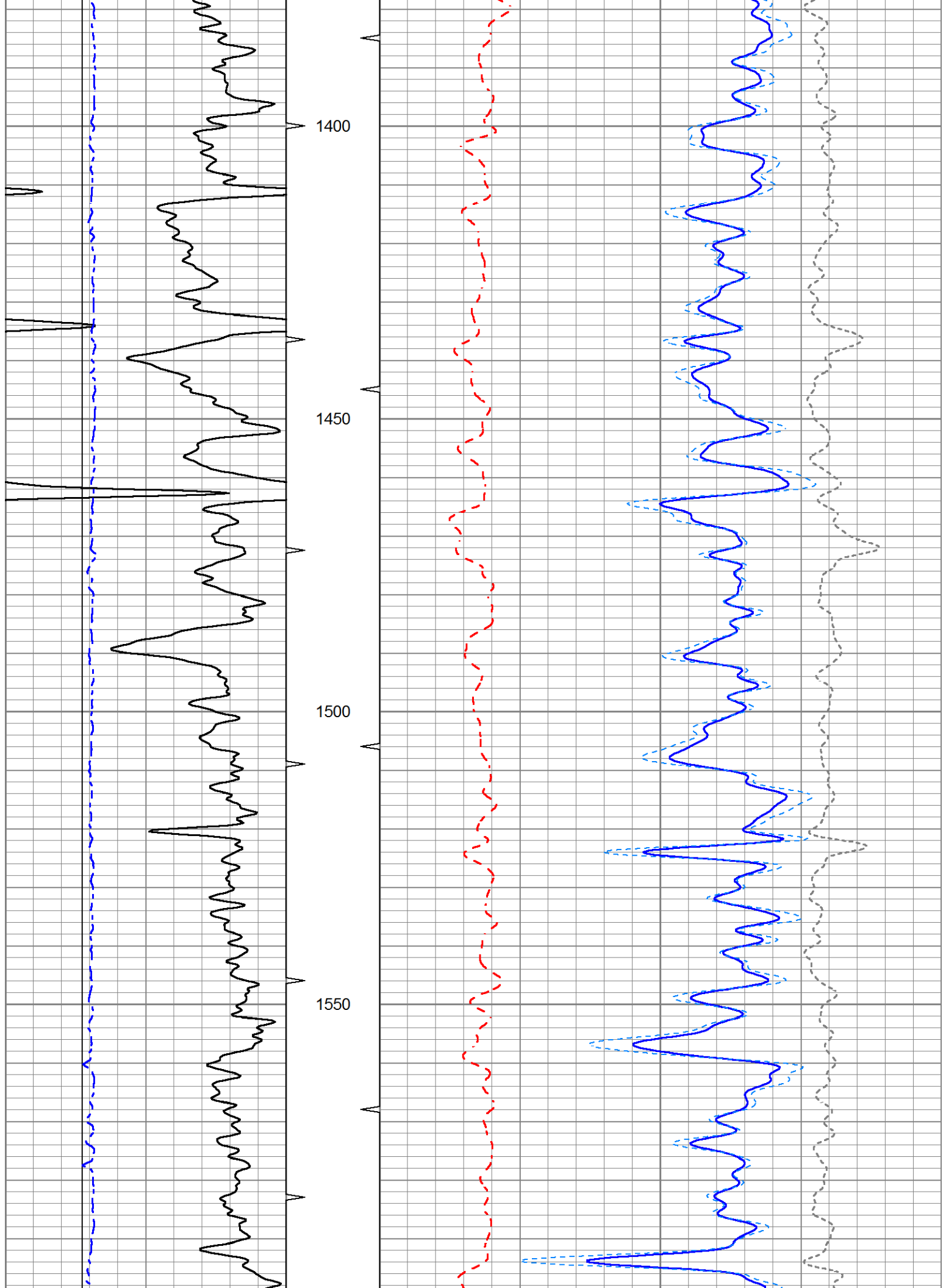


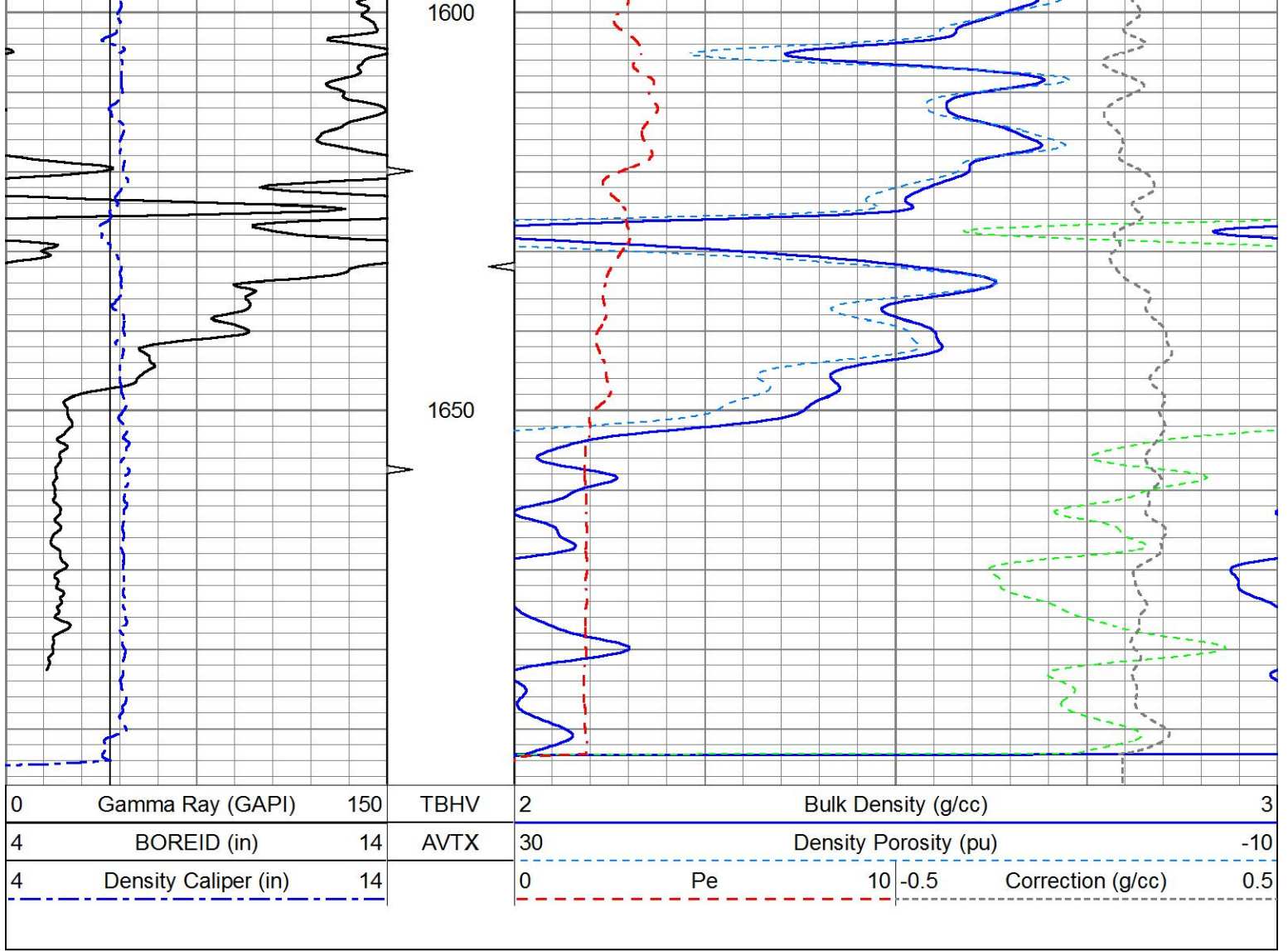








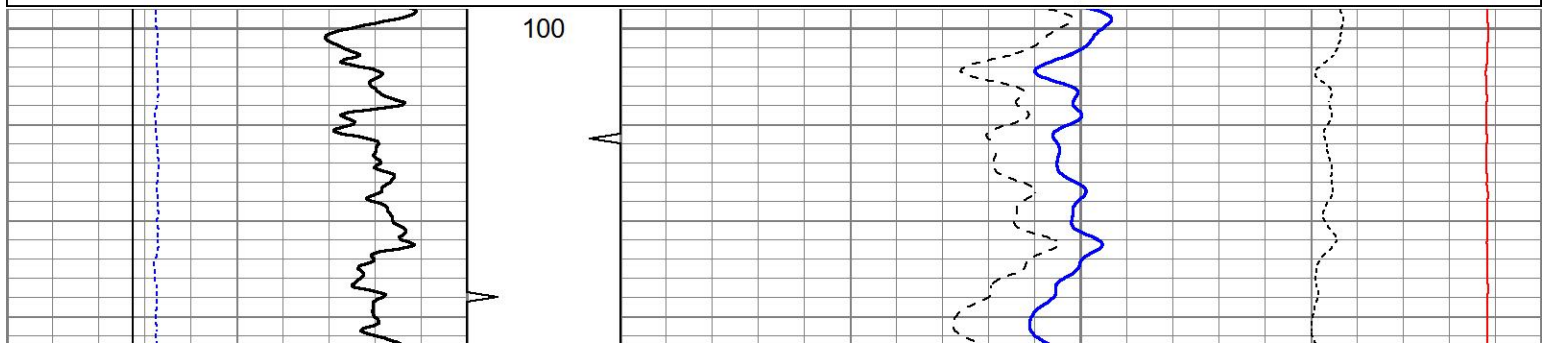


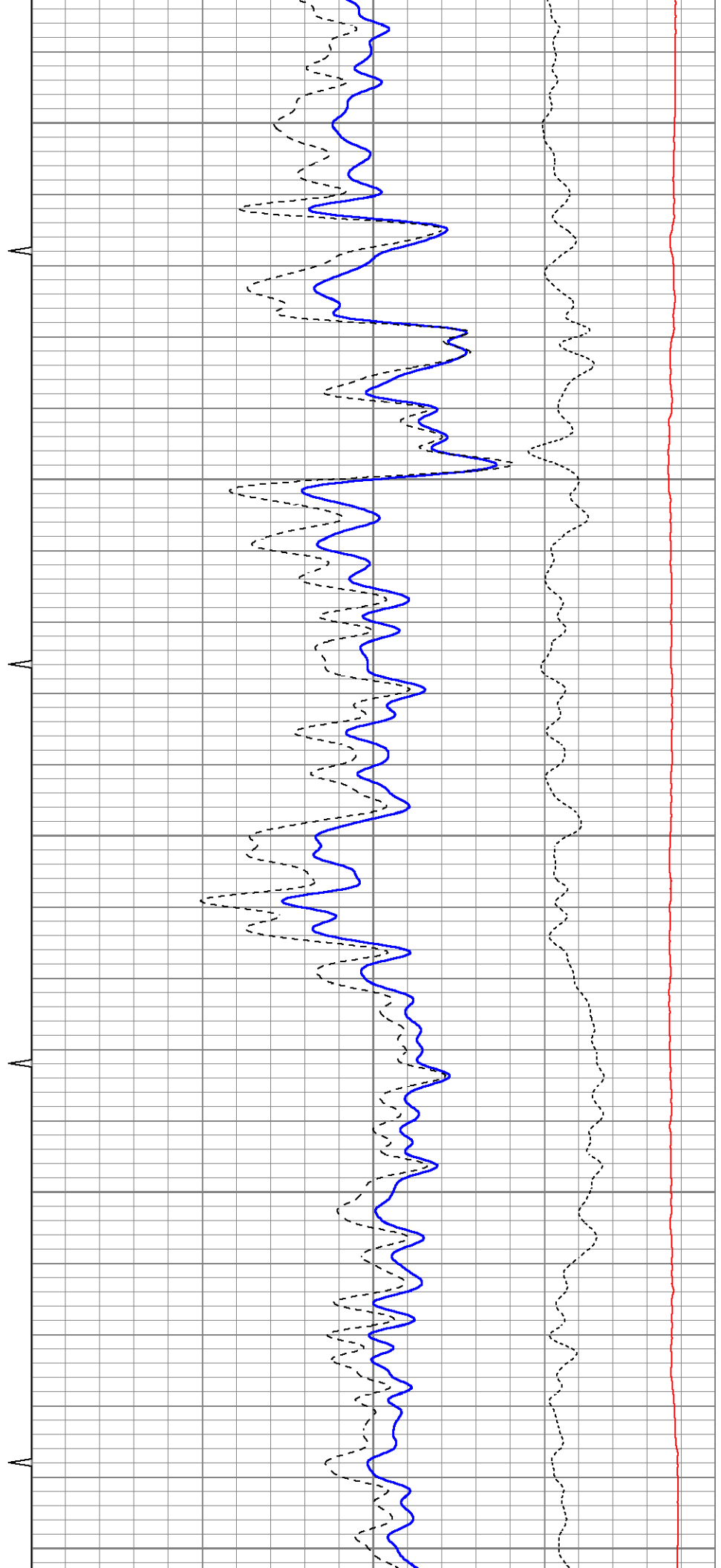
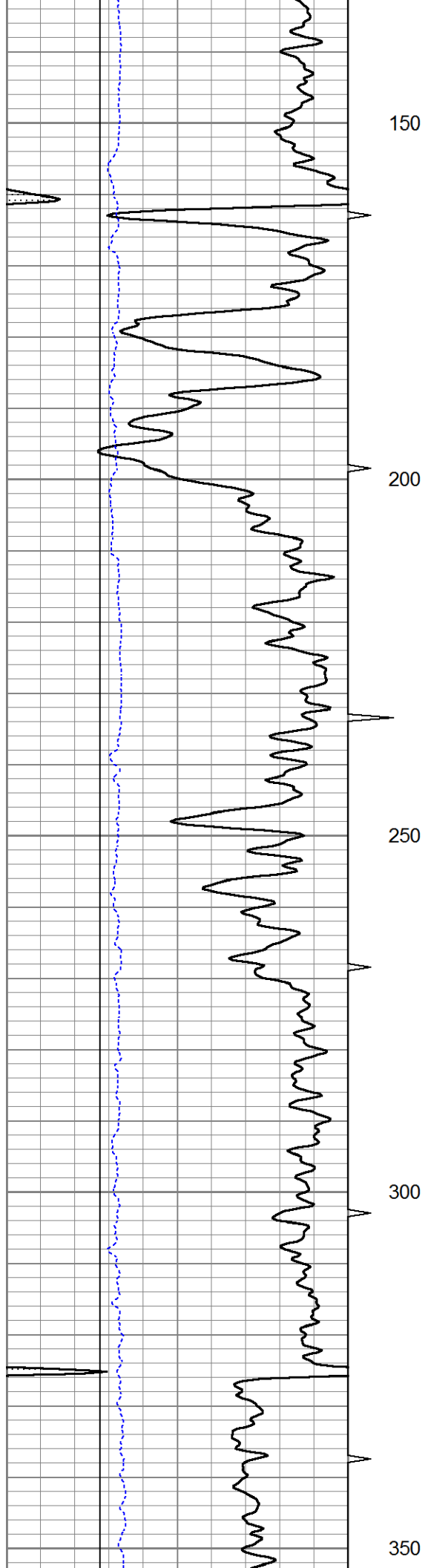


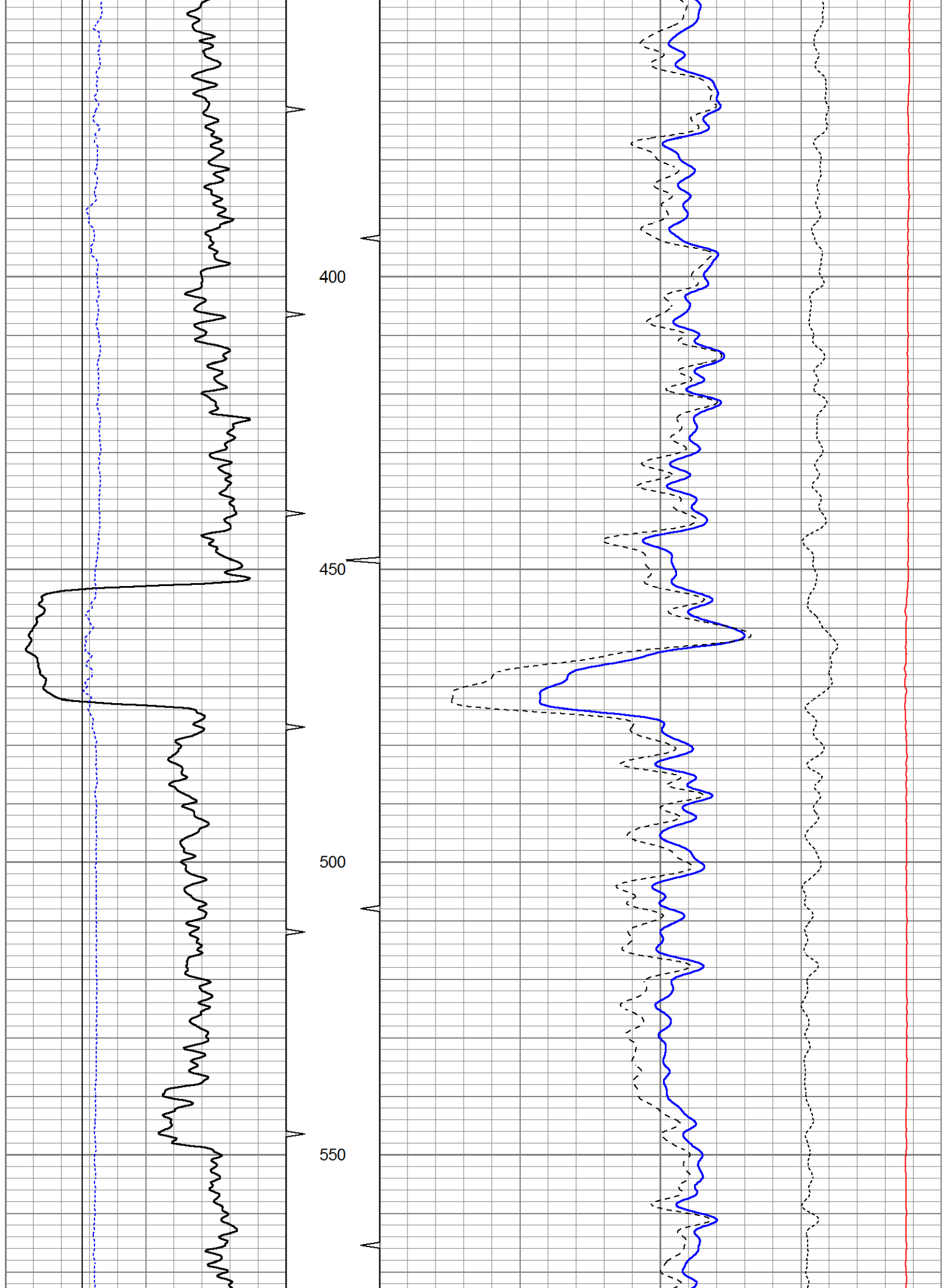
# 5" CDL SECTION

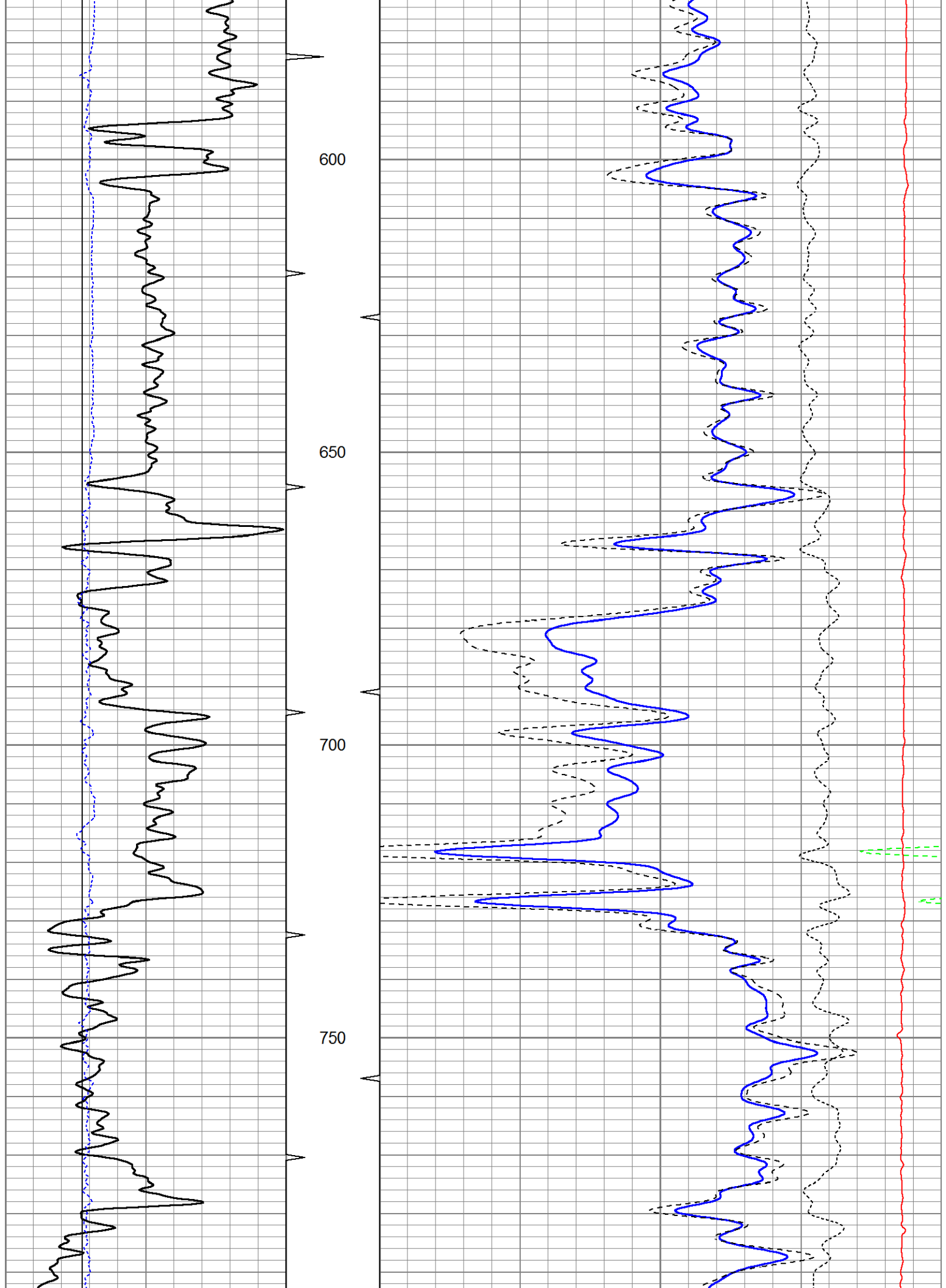
Database File ow2-8480 gus jones.db  
 Dataset Pathname LDT/pass1.1  
 Presentation Format bulk4  
 Dataset Creation Thu Oct 31 12:38:34 2013  
 Charted by Depth in Feet scaled 1:240

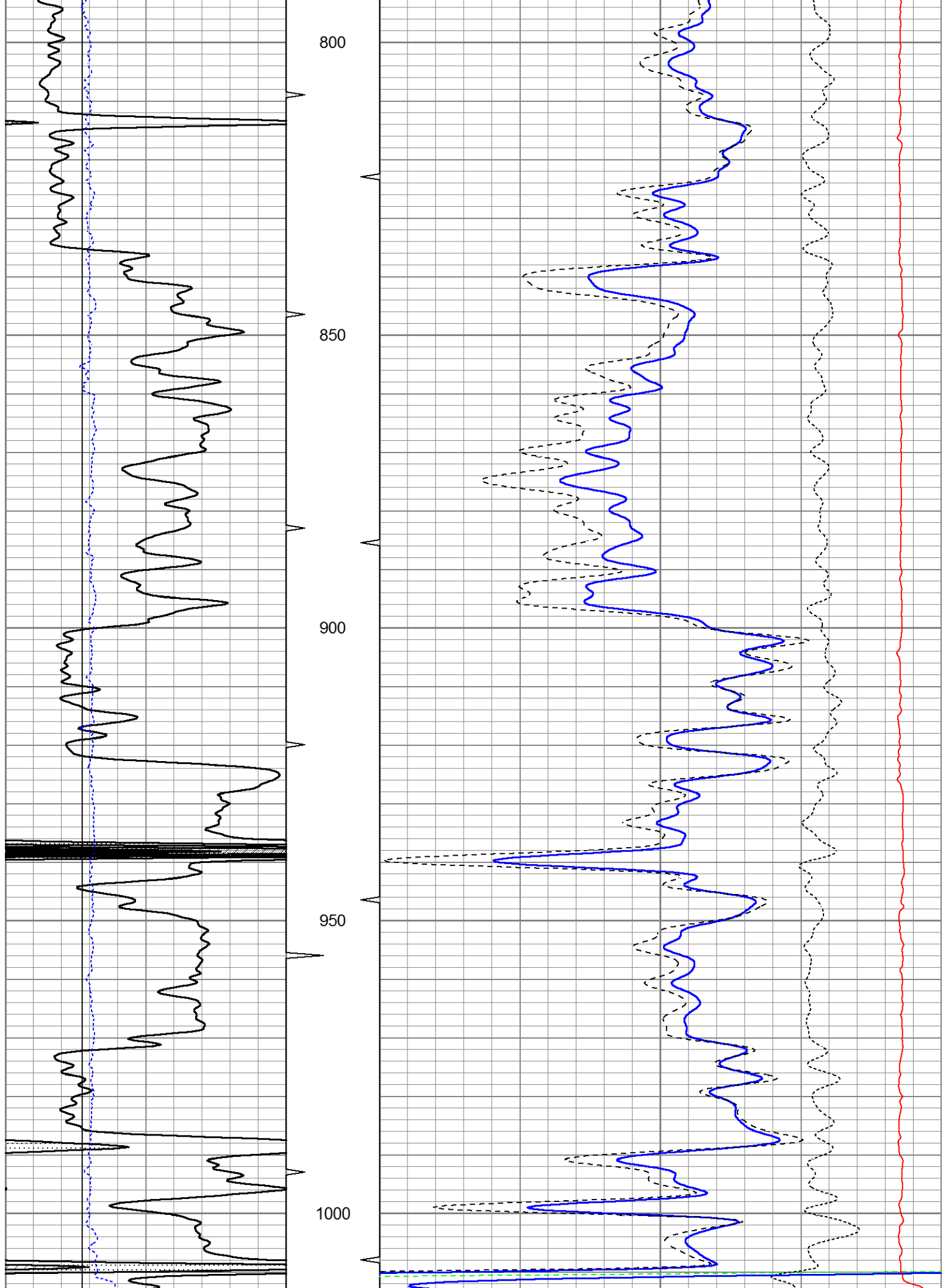
0	Gamma Ray (GAPI)	150	TBHV	2	Bulk Density (g/cc)	3
4	Bit size (in)	14	ABHV	30	Density porosity (pu)	-10
4	Density Caliper (in)	14			-0.5	Correction (g/cc)
					5000	Line Tension (lb)
						0

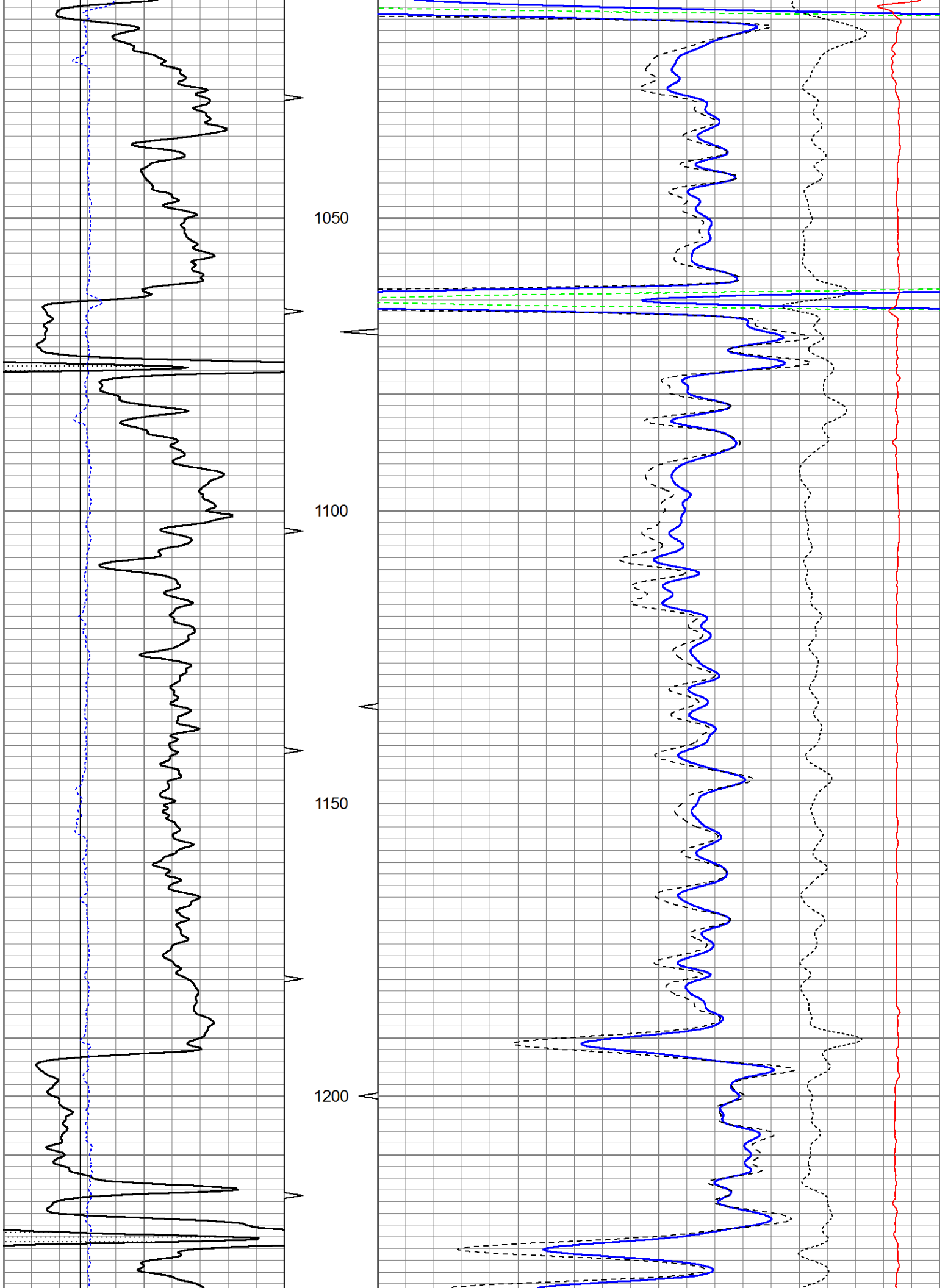


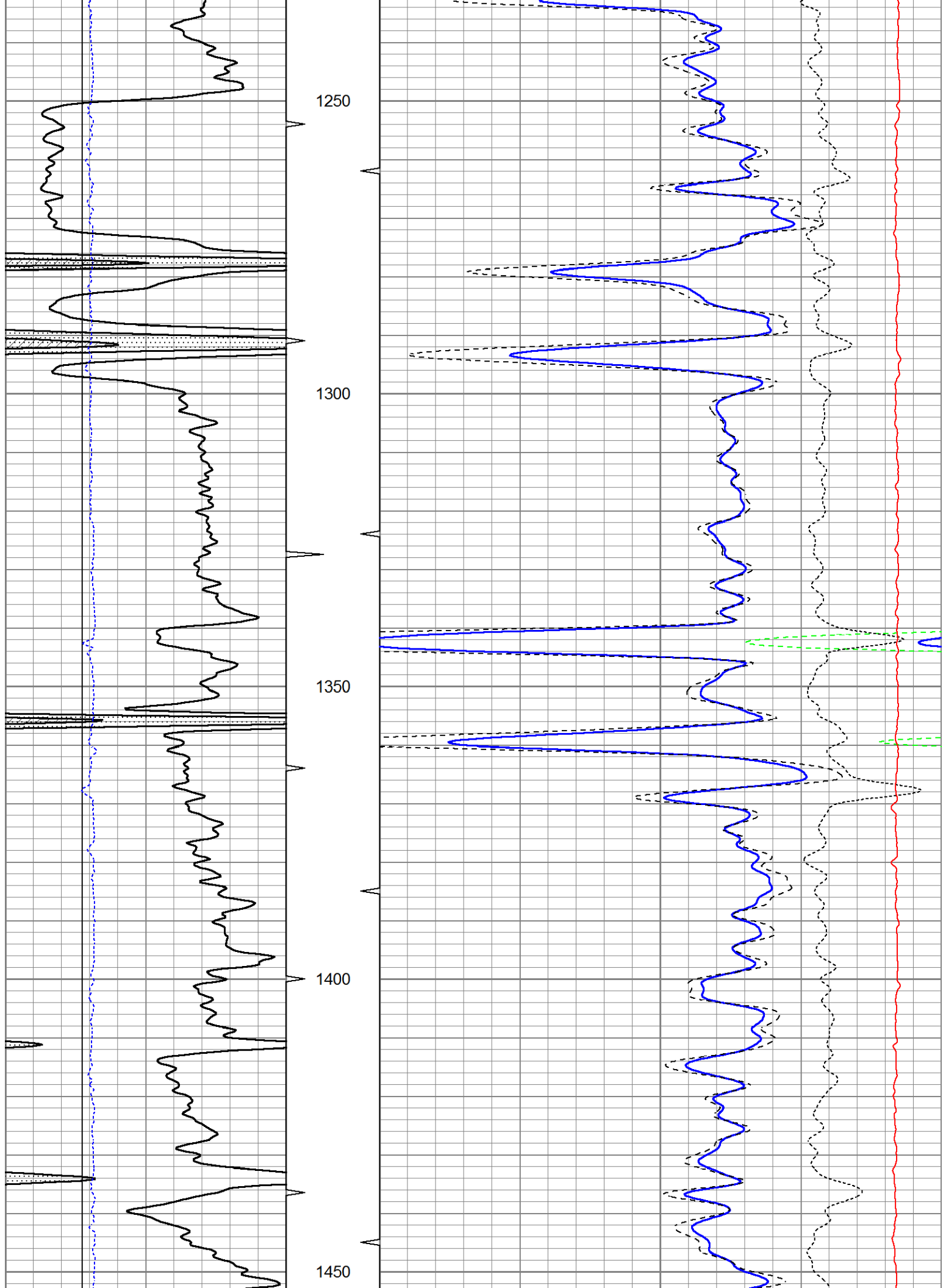


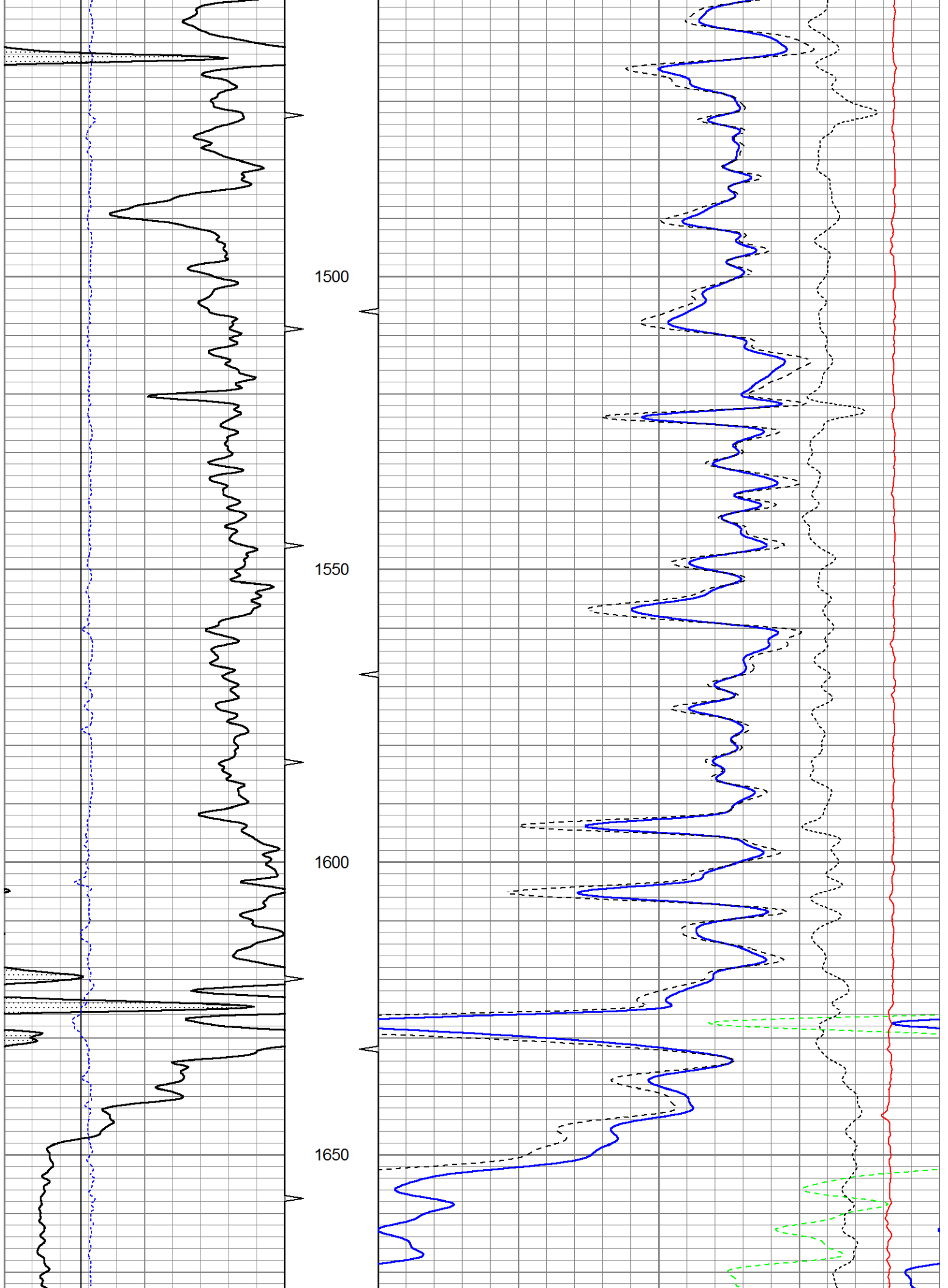






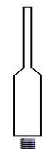

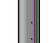



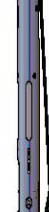







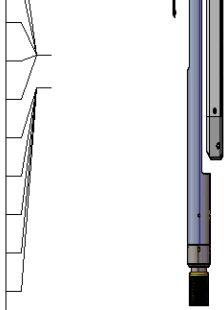




0	Gamma Ray (GAPI)	150	TBHV	2	Bulk Density (g/cc)	3
4	Bit size (in)	14	ABHV	30	Density porosity (pu)	-10
4	Density Caliper (in)	14			-0.5	Correction (g/cc) 0.5
					5000	Line Tension (lb) 0

Sensor	Offset (ft)	Schematic	Description	Length (ft)	O.D. (in)	Weight (lb)
			CHD-SDSCHD (SDS) Open Hole Cable head	1.00	2.75	10.00
GR	12.54		GR-PTS_OH (110917) Open Hole Gamma Ray	3.67	3.38	47.00
IntTemp	6.83					
SSDAC	6.83					
LSDAC	6.83					
LD_HEAD_V	5.83					
			LDT-V4_17P (110352)	9.71	4.00	300.00
DCAL	2.42					
LCSBin	1.92					
W4	1.92					

W3	1.92
W2	1.92
W1	1.92
SCSBin	1.67
W8	1.67
W7	1.67
W6	1.67
W5	1.67



Dataset: ow2-8480 gus jones.db: field/well/LDT/pass1  
 Total length: 14.38 ft  
 Total weight: 357.00 lb  
 O.D.: 4.00 in