



**COMPLETION
& PRODUCTION
SERVICES CO.**

**MICRO
LOG**

Company DOWNING NELSON OIL COMPANY, INC.
Well HILLMAN #2-18
Field
County TREGO
State KANSAS

Company DOWNING NELSON OIL COMPANY, INC.
Well HILLMAN #2-18
Field
County TREGO State KANSAS

Location: API # : 15-195-22913-0000
585' FNL & 1175' FEL
SEC 18 TWP 11S RGE 24W
Permanent Datum GROUND LEVEL Elevation 2354
Log Measured From KELLY BUSHING 8' A.G.L.
Drilling Measured From KELLY BUSHING
Other Services
CDL/CNL
DIL/SON
Elevation
K.B. 2362
D.F. 2360
G.L. 2354

Date	2/16/14		
Run Number	TWO		
Depth Driller	3991		
Depth Logger	3994		
Bottom Logged Interval	3976		
Top Log Interval	3000		
Casing Driller	8 5/8" @ 221		
Casing Logger	220		
Bit Size	7 7/8"		
Type Fluid in Hole	CHEMICAL MUD	CHLORIDES 3000 PPM	
Density / Viscosity	9.0/54		
pH / Fluid Loss	10.5/8.0		
Source of Sample	FLOWLINE		
Rm @ Meas. Temp	.80 @ 70F		
Rmt @ Meas. Temp	.60 @ 70F		
Rmc @ Meas. Temp	.96 @ 70F		
Source of Rmf / Rmc	MEASUREMENT		
Rm @ BHT	.48 @ 116F		
Time Circulation Stopped	2 HOURS		
Time Logger on Bottom			
Maximum Recorded Temperature	116F		
Equipment Number	4010		
Location	HAYS, KANSAS		
Recorded By	JASON CAPPELLUCCI		
Witnessed By	MARC DOWNING		

<<< Fold Here >>>

All interpretations are opinions based on inferences from electrical or other measurements and we cannot and do not guarantee the accuracy or correctness of any interpretation, and we shall not, except in the case of gross or willful negligence on our part, be liable or responsible for any loss, costs, damages, or expenses incurred or sustained by anyone resulting from any interpretation made by any of our officers, agents or employees. These interpretations are also subject to our general terms and conditions set out in our current Price Schedule.

Comments

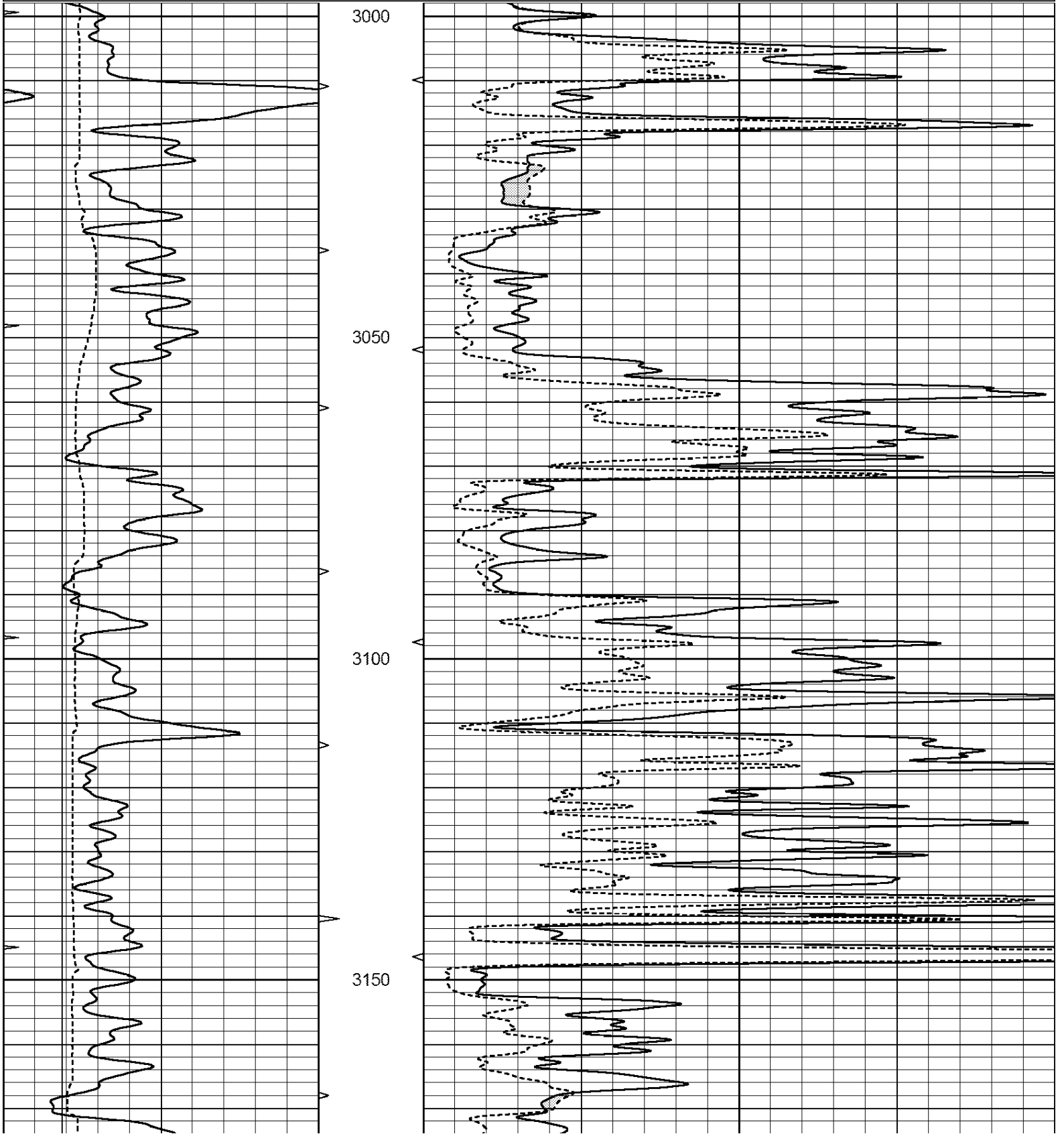
THANK YOU FOR USING NABORS, HAYS, KS. (785) 628-6395
DIRECTIONS:
WAKEENEY, KS. - NORTH TO B RD. - 8 WEST TO 180 RD. - 1 SOUTH - 1/4 WEST - SOUTH INTO

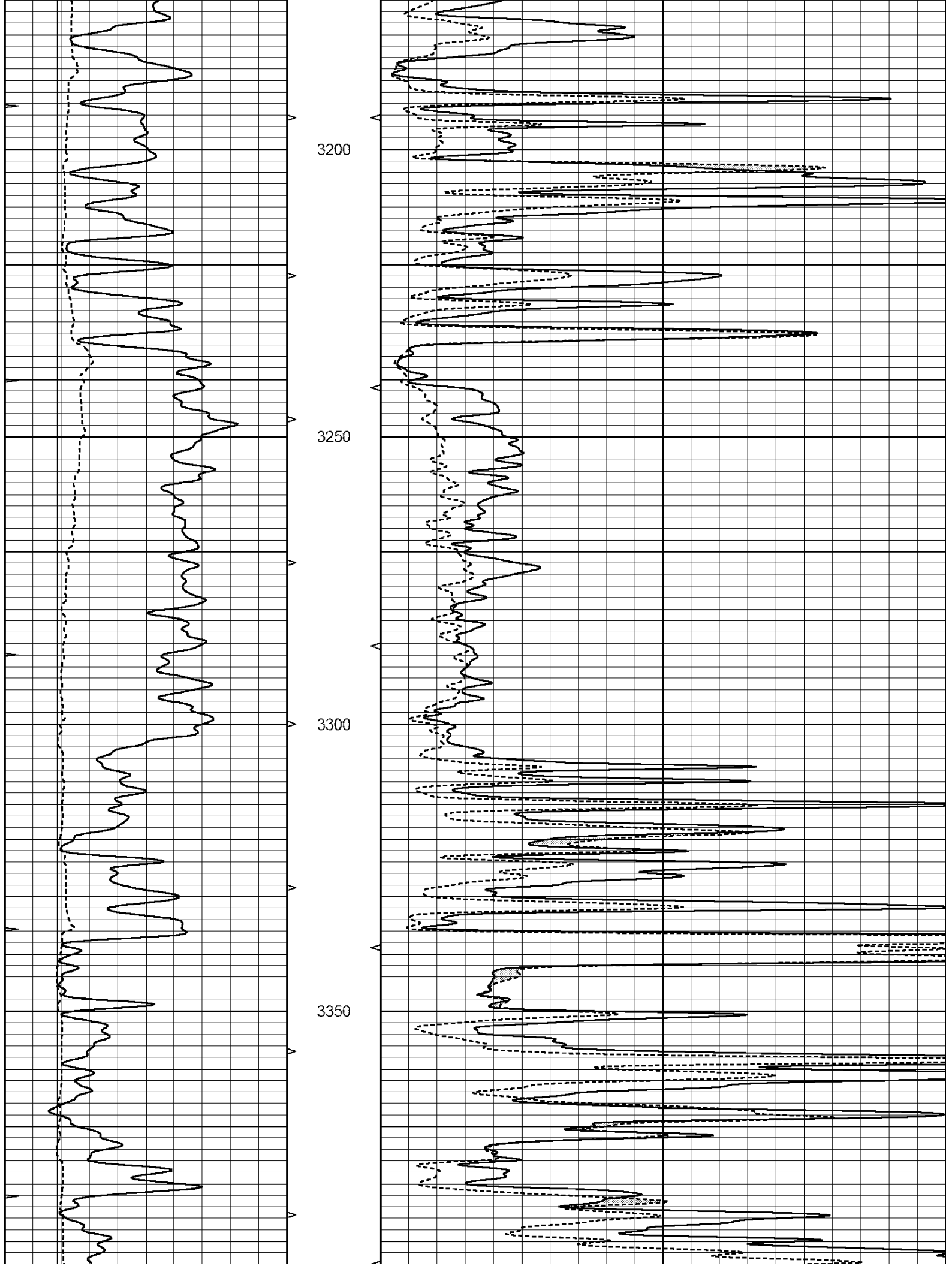


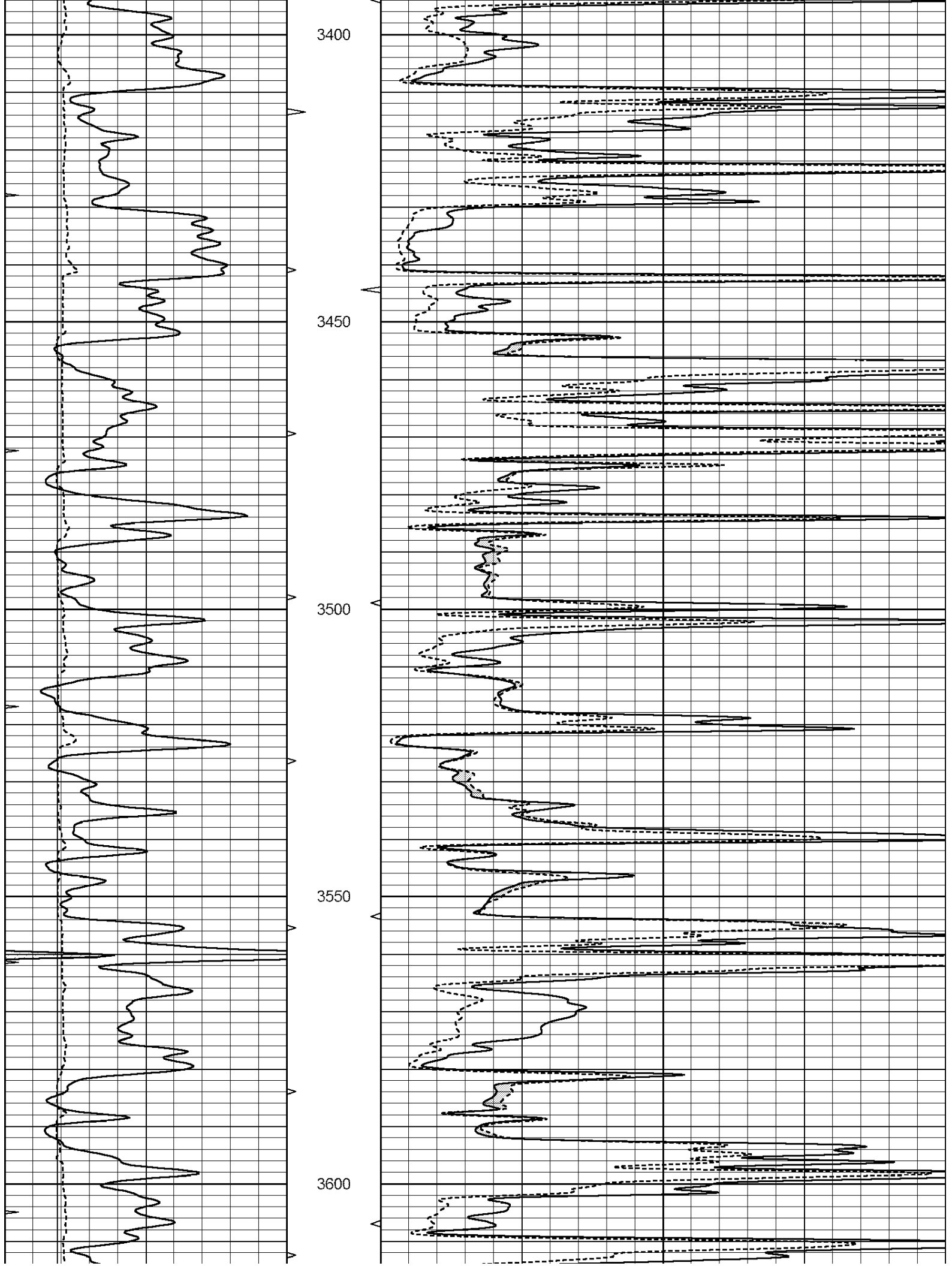
MAIN SECTION

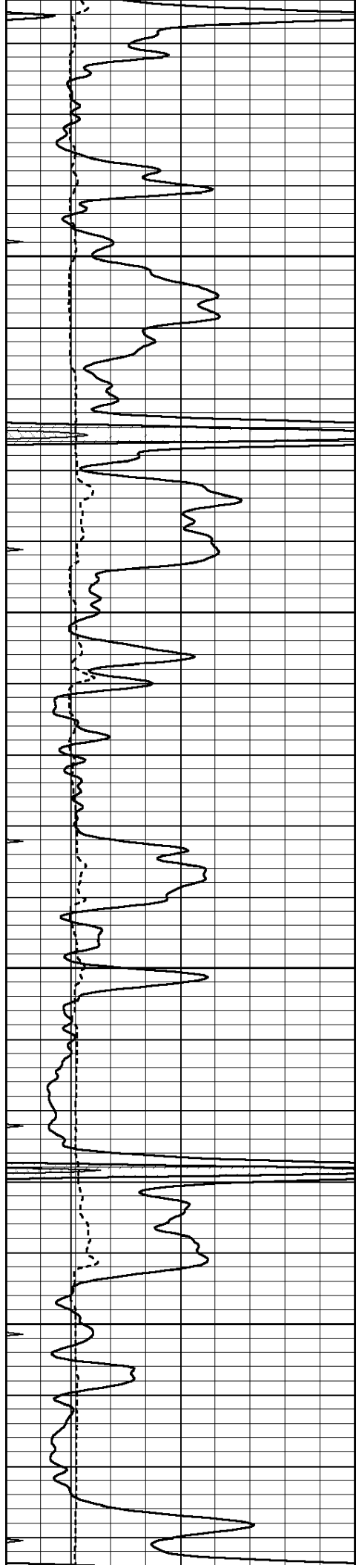
Database File: 23895ddn.db
 Dataset Pathname: pass6.1
 Presentation Format: _micro
 Dataset Creation: Mon Feb 17 00:52:29 2014 by Calc Open-Cased 090629
 Charted by: Depth in Feet scaled 1:240

0	GAMMA RAY (GAPI)	150	ABHV	0	MEL1.5 (Ohm-m)	40
6	CALIPER (in)	16	10 (ft3)	0	MEL2.0 (Ohm-m)	40
0	MINMK	20	TBHV			
			0 (ft3)	10		







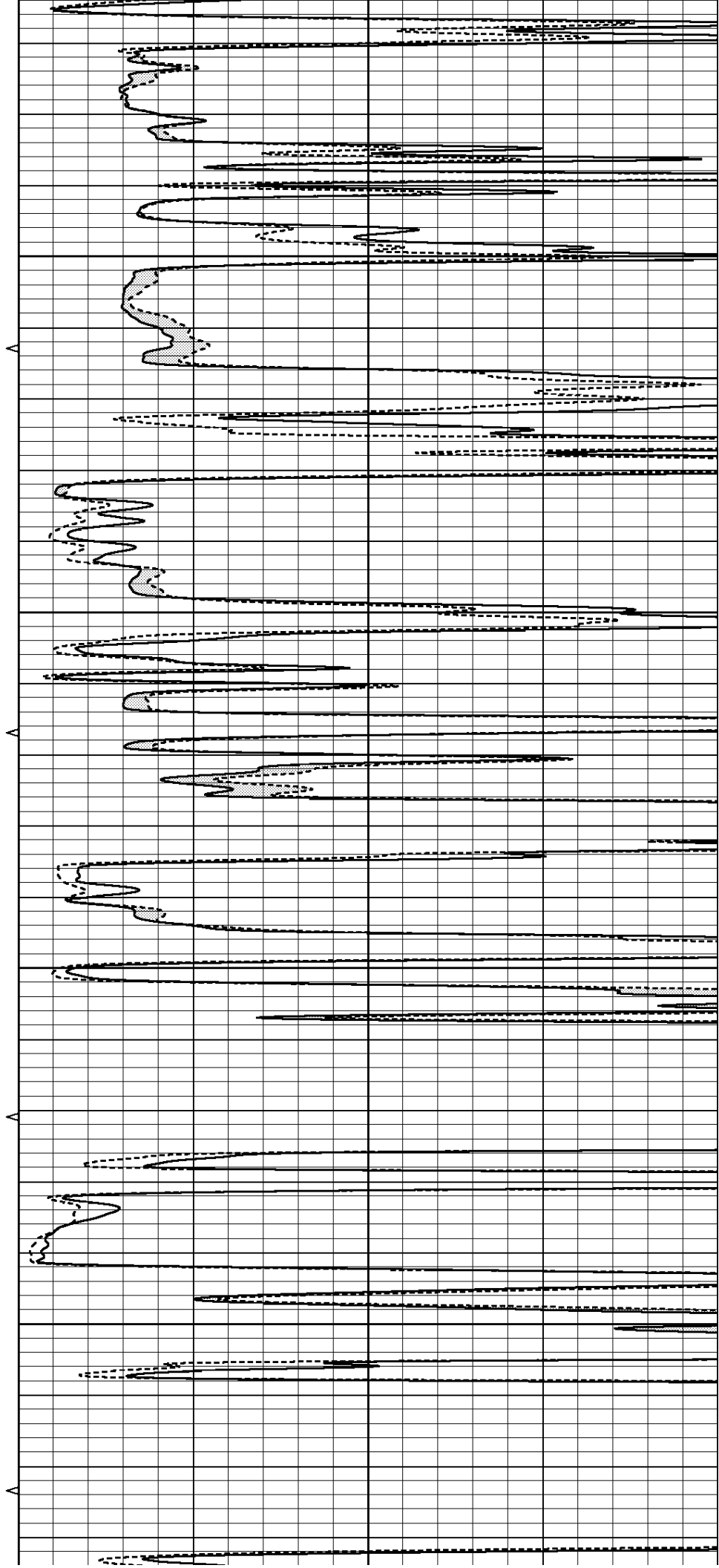


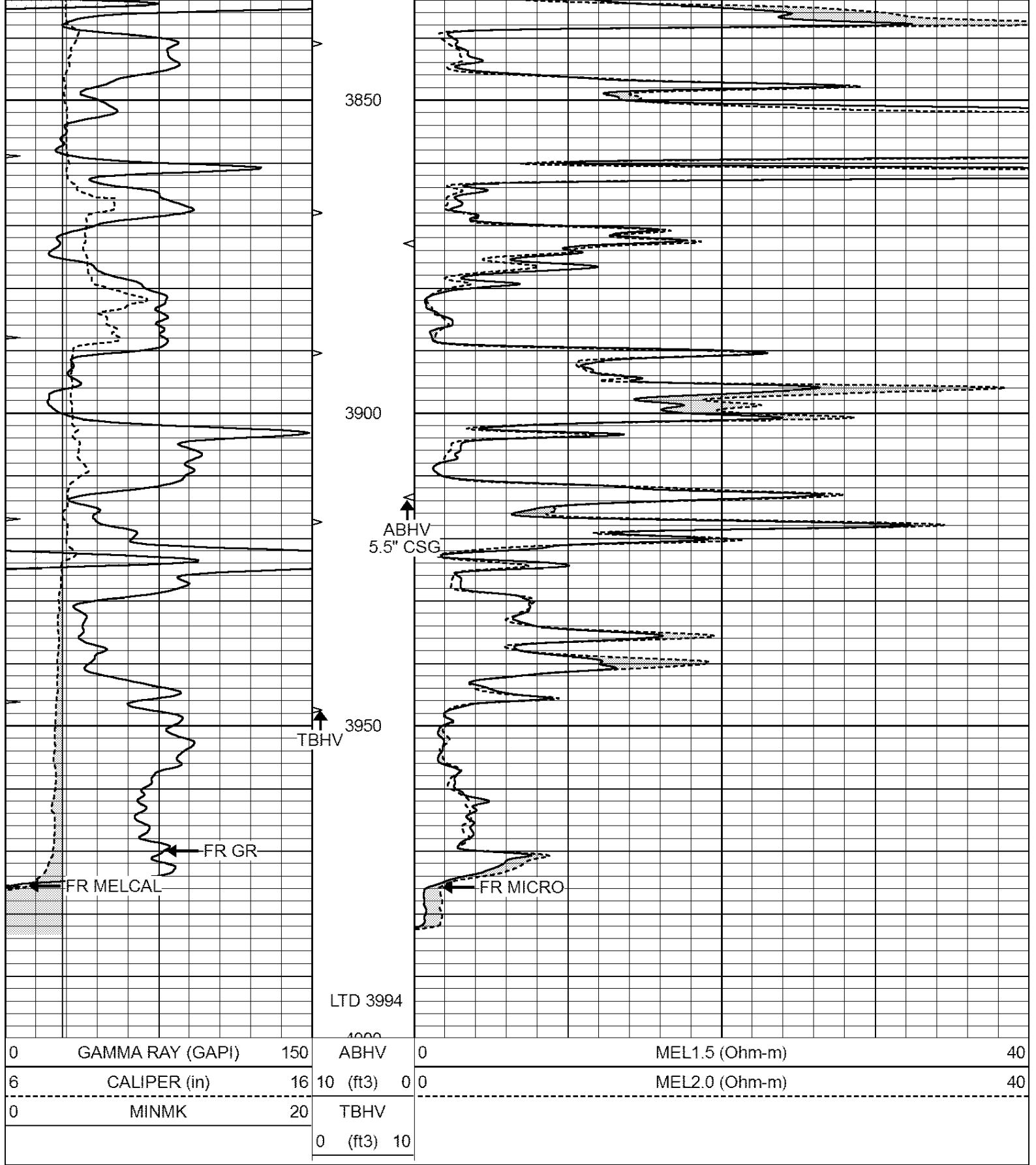
3650

3700

3750

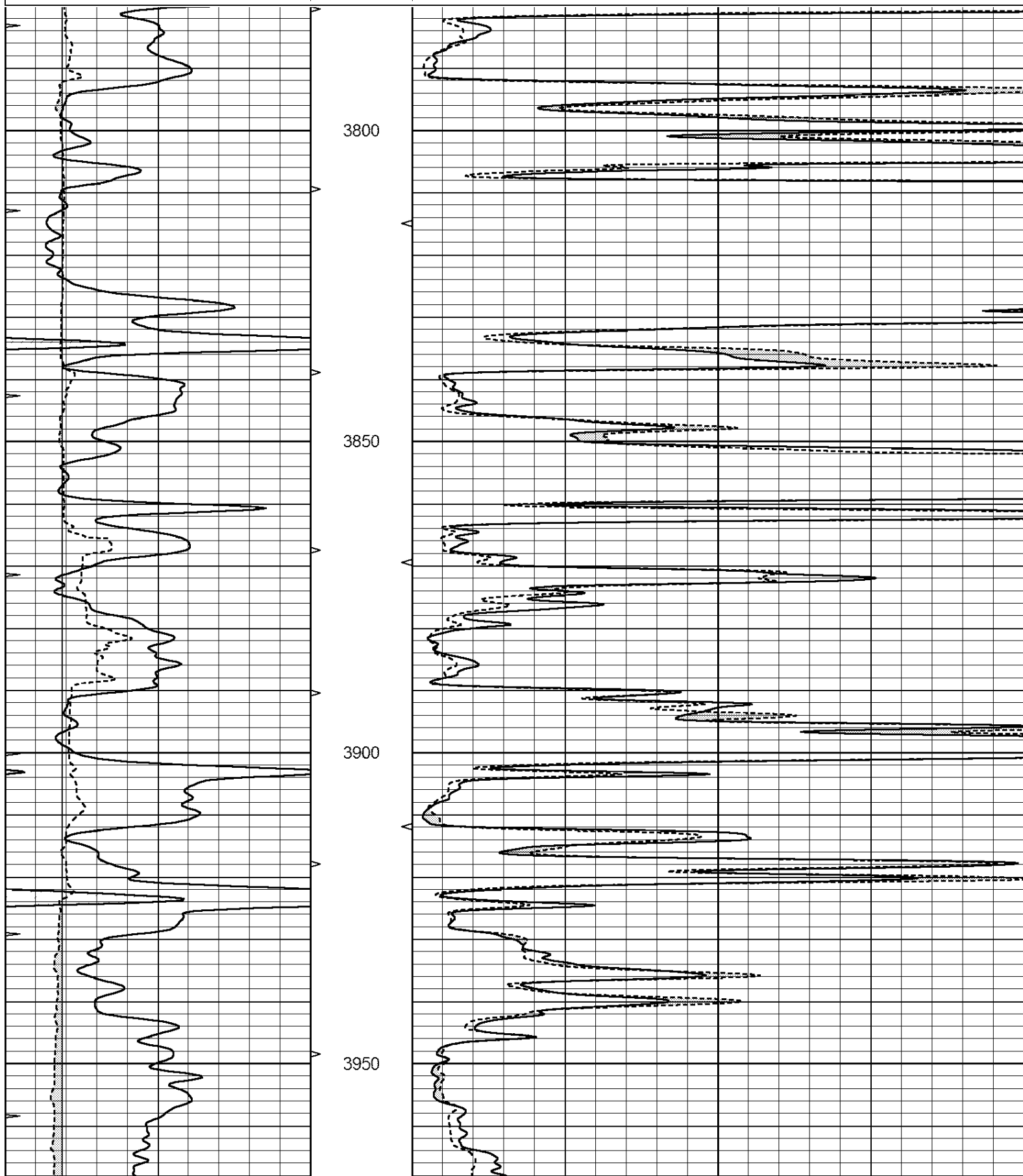
3800

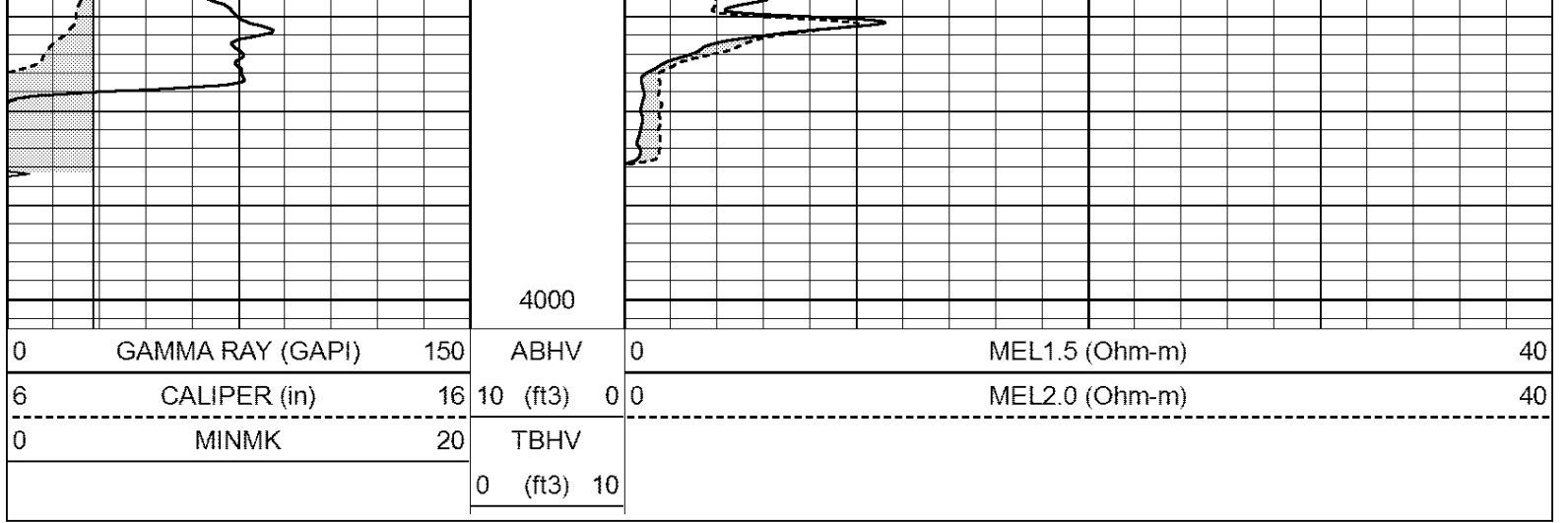




REPEAT SECTION

0	GAMMA RAY (GAPI)	150	ABHV	0	MEL1.5 (Ohm-m)	40
6	CALIPER (in)	16	10 (ft3)	0 0	MEL2.0 (Ohm-m)	40
0	MINMK	20	TBHV			
			0 (ft3)	10		





Calibration Report

Database File: 23895ddn.db
 Dataset Pathname: pass5.1
 Dataset Creation: Mon Feb 17 00:54:59 2014 by Calc Open-Cased 090629

MICRO Calibration Report

Serial Number: MICRO3
 Tool Model: PROBE
 Performed: Thu Nov 17 03:06:31 2011

Caliper Calibration: Gain=3.916 Offset=-9.771
 References Low Cal High Cal
 Readings 8.000 14.000
 4.257 5.789

1.5" Calibration: Gain=180.000 Offset=-0.700
 References Low Cal High Cal
 Readings 0.000 20.000
 0.004 0.228

2" Calibration: Gain=150.553 Offset=-1.220
 References Low Cal High Cal
 Readings 0.000 20.000
 0.005 0.175

Gamma Ray Calibration Report

Serial Number: GR6
 Tool Model: OPEN
 Performed: Fri Nov 29 08:34:37 2013
 Calibrator Value: 150.0 GAPI
 Background Reading: 0.0 cps
 Calibrator Reading: 276.0 cps
 Sensitivity: 0.6035 GAPI/cps