



**COMPLETION
& PRODUCTION
SERVICES CO.**

**SONIC
LOG**

Company DOWNING NELSON OIL COMPANY, INC.
Well HILLMAN #2-18
Field
County TREGO
State KANSAS

Company DOWNING NELSON OIL COMPANY, INC.
Well HILLMAN #2-18
Field
County TREGO State KANSAS

Location: API # : 15-195-22913-0000
585' FNL & 1175' FEL
SEC 18 TWP 11S RGE 24W
Permanent Datum GROUND LEVEL Elevation 2354
Log Measured From KELLY BUSHING 8' A.G.L.
Drilling Measured From KELLY BUSHING
Other Services
CDL/CNL
DIL/MEL
Elevation
K.B. 2362
D.F. 2360
G.L. 2354

Date	2/16/14
Run Number	TWO
Depth Driller	3991
Depth Logger	3994
Bottom Logged Interval	3984
Top Log Interval	200
Casing Driller	8 5/8" @ 221
Casing Logger	220
Bit Size	7 7/8"
Type Fluid in Hole	CHEMICAL MUD
Density / Viscosity	9.0/54
pH / Fluid Loss	10.5/8.0
Source of Sample	FLOWLINE
Rm @ Meas. Temp	.80 @ 70F
Rmt @ Meas. Temp	.60 @ 70F
Rmc @ Meas. Temp	.96 @ 70F
Source of Rmf / Rmc	MEASUREMENT
Rm @ BHT	.48 @ 116F
Time Circulation Stopped	2 HOURS
Time Logger on Bottom	
Maximum Recorded Temperature	116F
Equipment Number	4010
Location	HAYS, KANSAS
Recorded By	JASON CAPPELLUCCI
Witnessed By	MARC DOWNING

<<< Fold Here >>>

All interpretations are opinions based on inferences from electrical or other measurements and we cannot and do not guarantee the accuracy or correctness of any interpretation, and we shall not, except in the case of gross or willful negligence on our part, be liable or responsible for any loss, costs, damages, or expenses incurred or sustained by anyone resulting from any interpretation made by any of our officers, agents or employees. These interpretations are also subject to our general terms and conditions set out in our current Price Schedule.

Comments

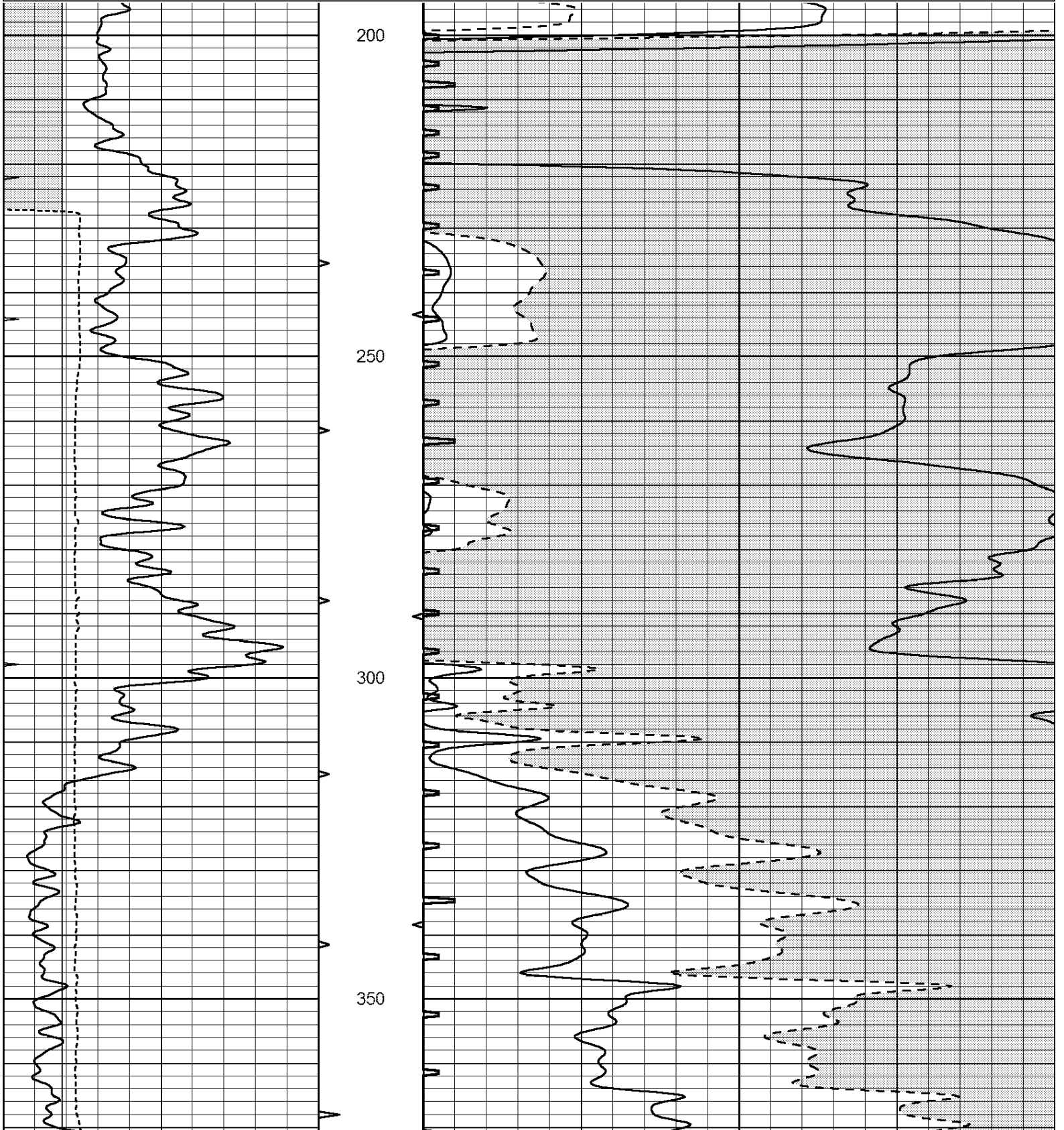
THANK YOU FOR USING NABORS, HAYS, KS. (785) 628-6395
DIRECTIONS:
WAKEENEY, KS. - NORTH TO B RD. - 8 WEST TO 180 RD. - 1 SOUTH - 1/4 WEST - SOUTH INTO

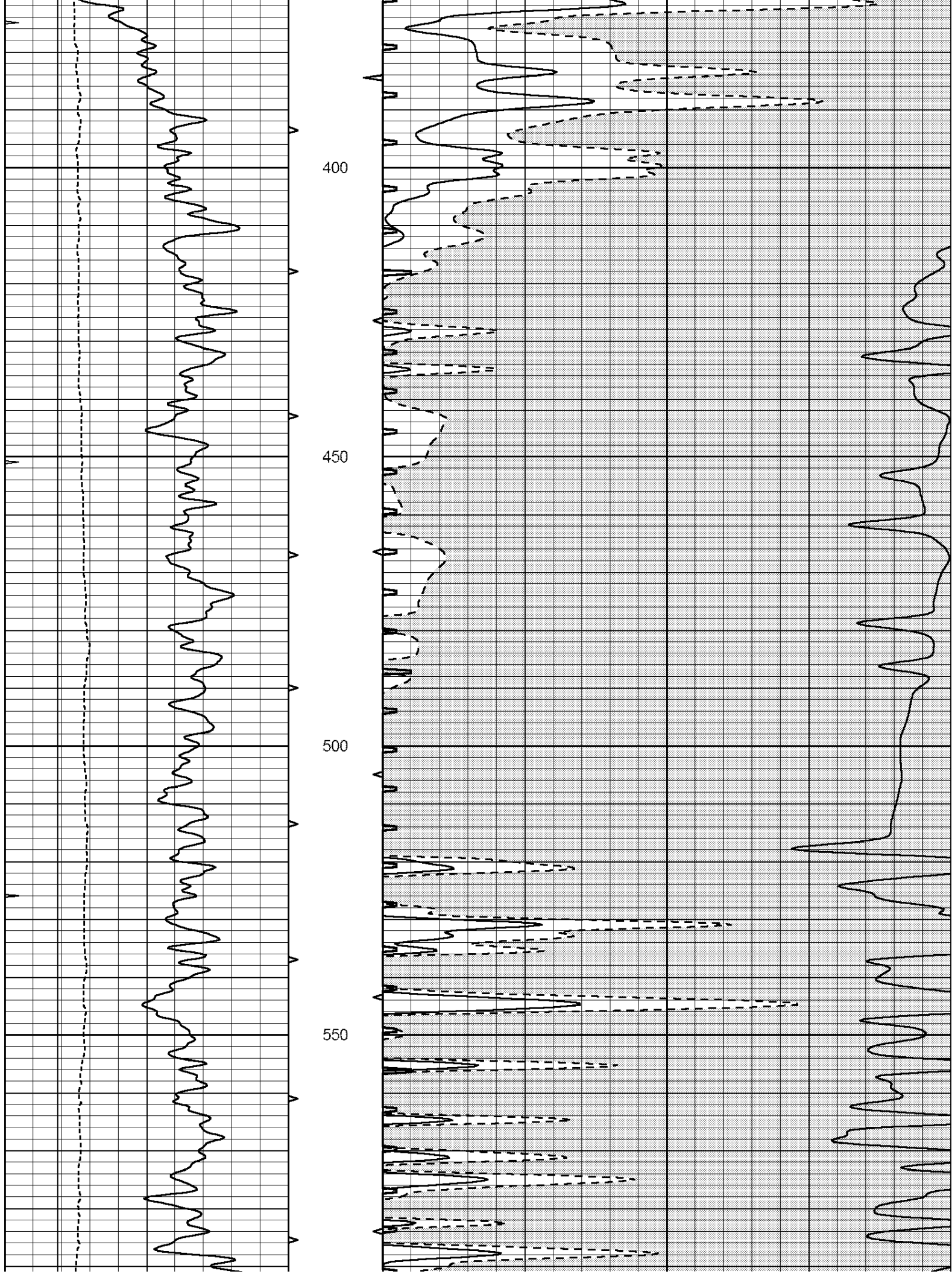


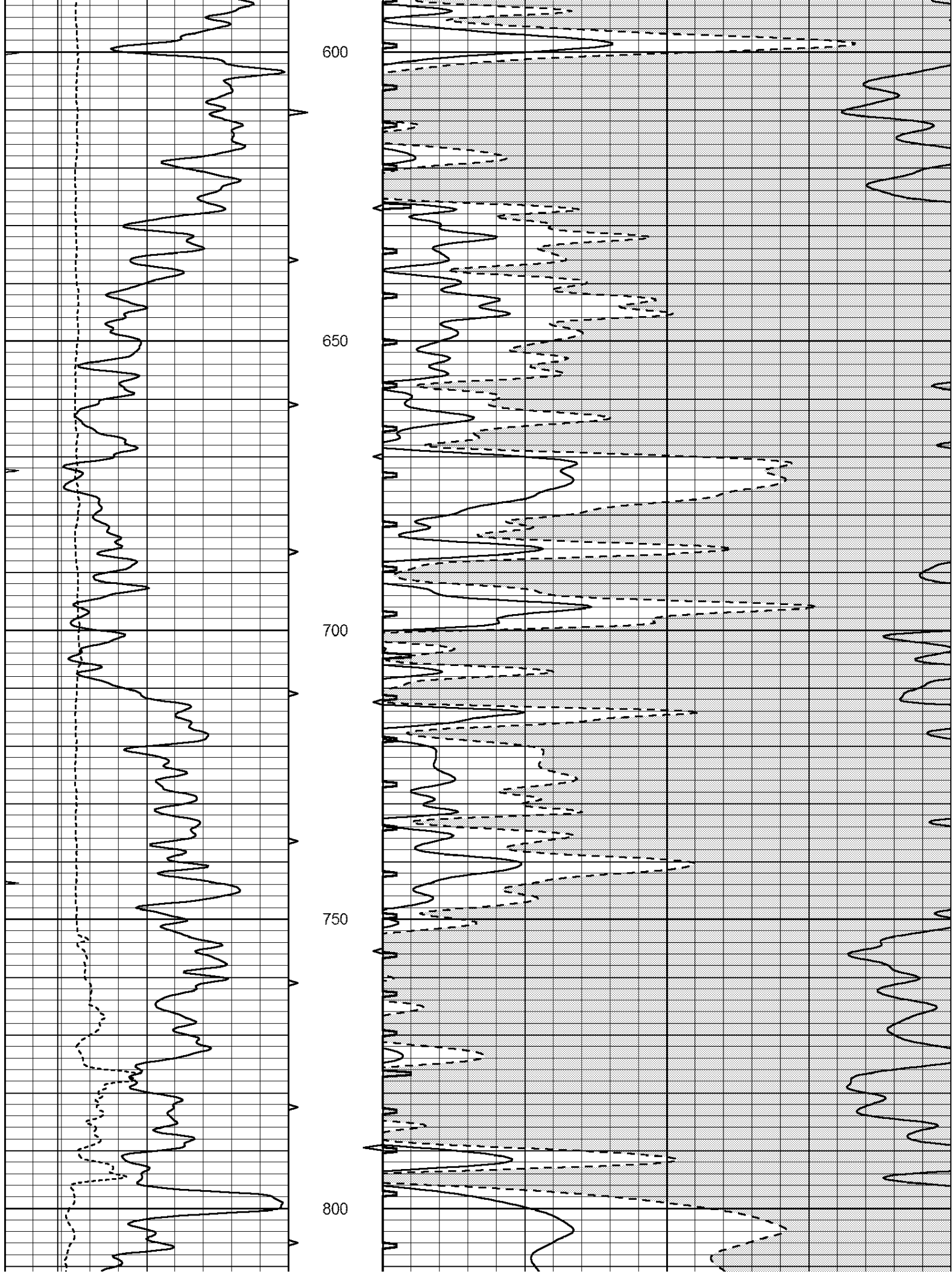
MAIN SECTION

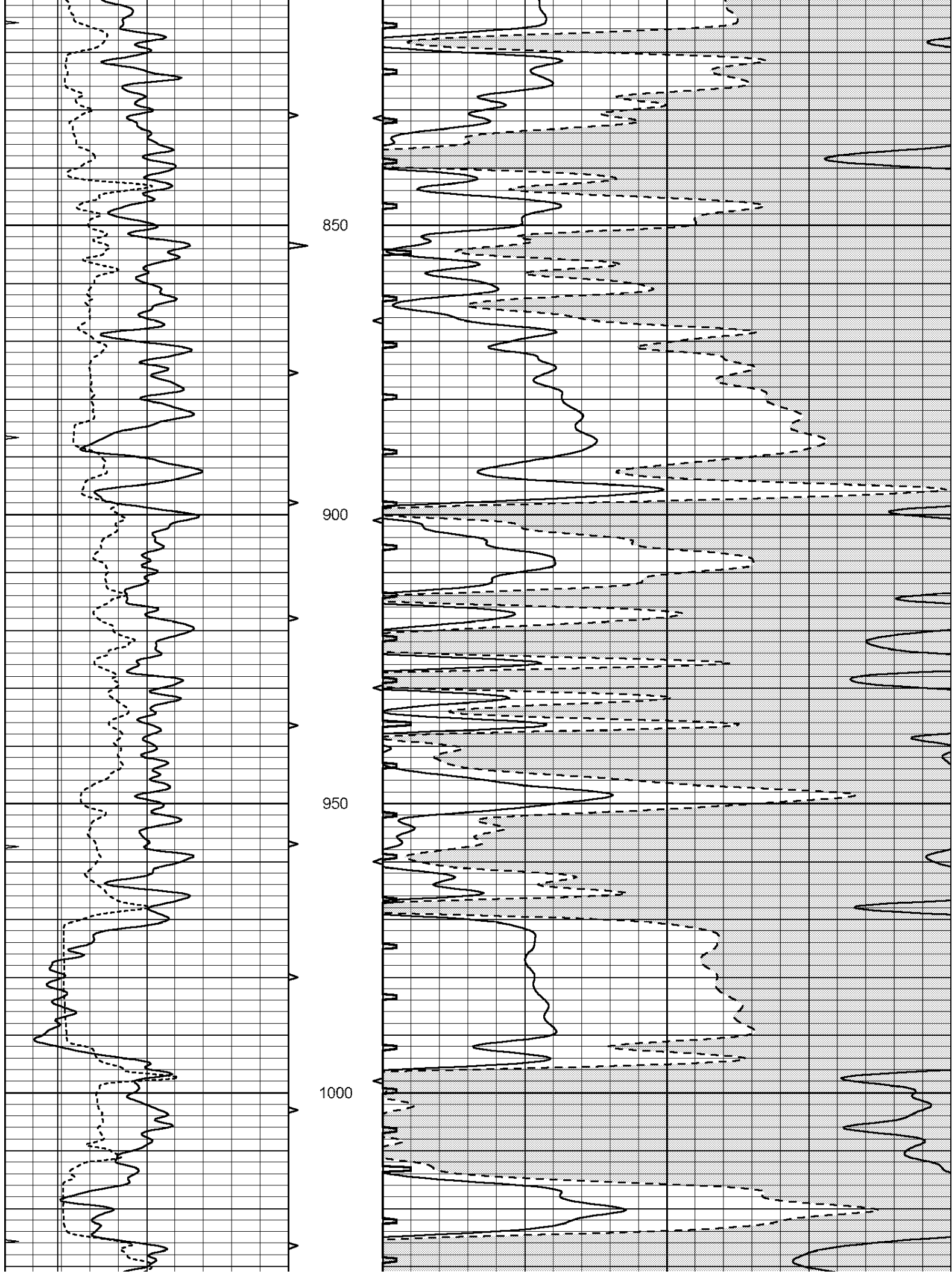
Database File: 23895ddn.db
 Dataset Pathname: pass6.2
 Presentation Format: _slt
 Dataset Creation: Mon Feb 17 01:33:10 2014 by Calc Open-Cased 090629
 Charted by: Depth in Feet scaled 1:240

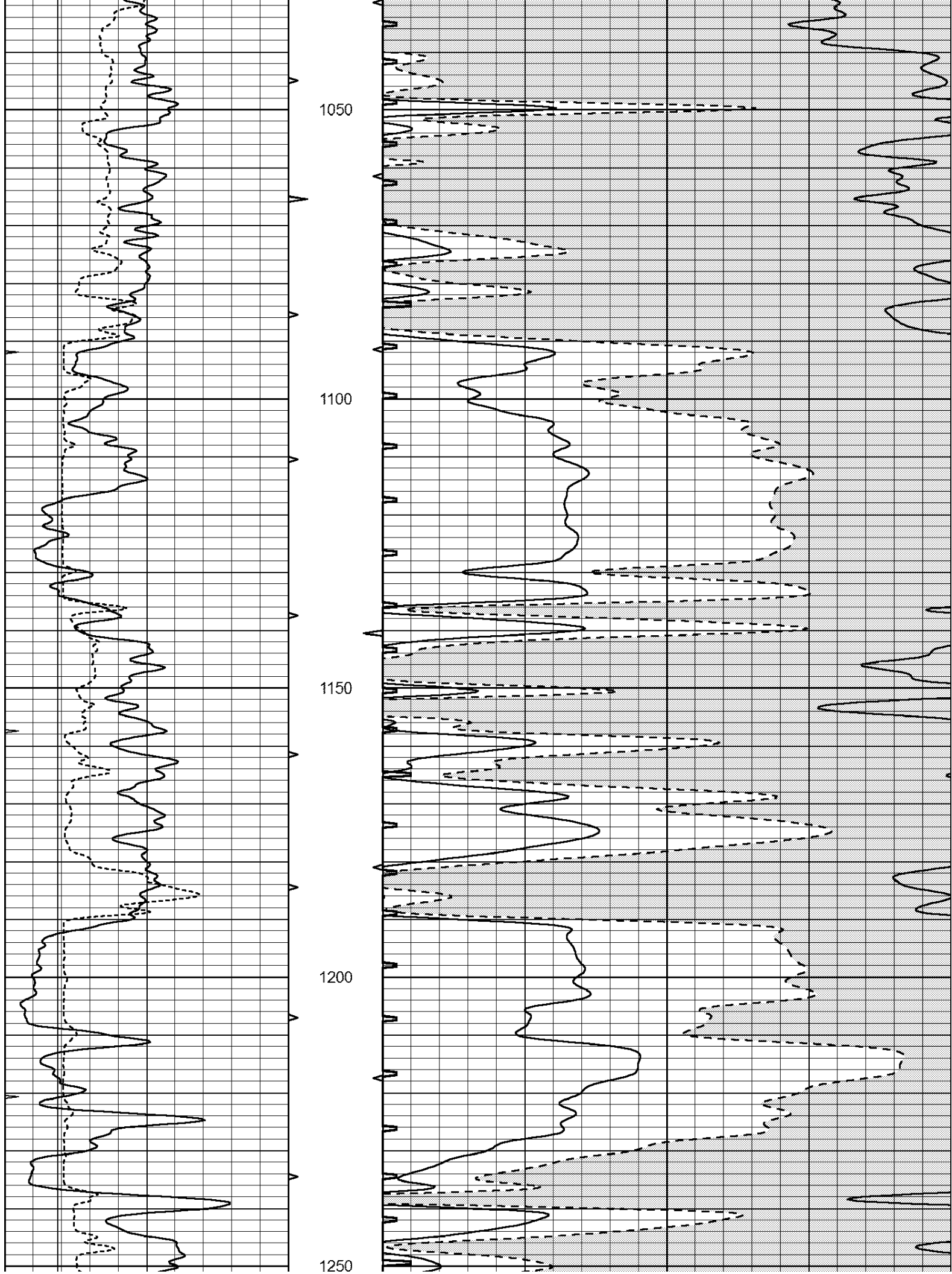
0	GAMMA RAY (GAPI)	150	ABHV	140	DELTA TIME (usec/ft)	40
6	CALIPER (in)	16	10 (ft3) 0	30	SONIC POROSITY (pu)	-10
0	MINMK	20	TBHV	0	ITT (msec)	20
			0 (ft3) 10			

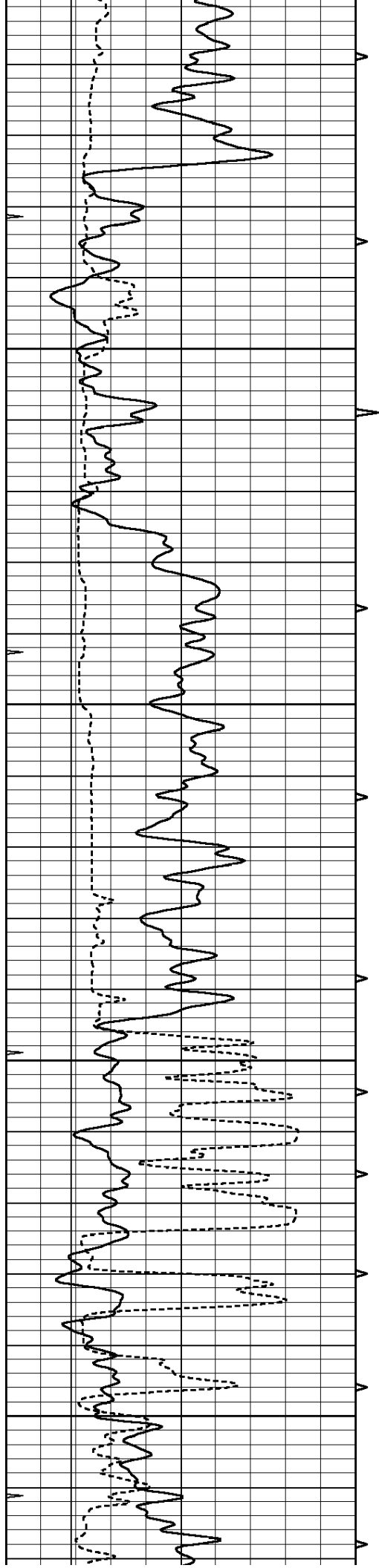










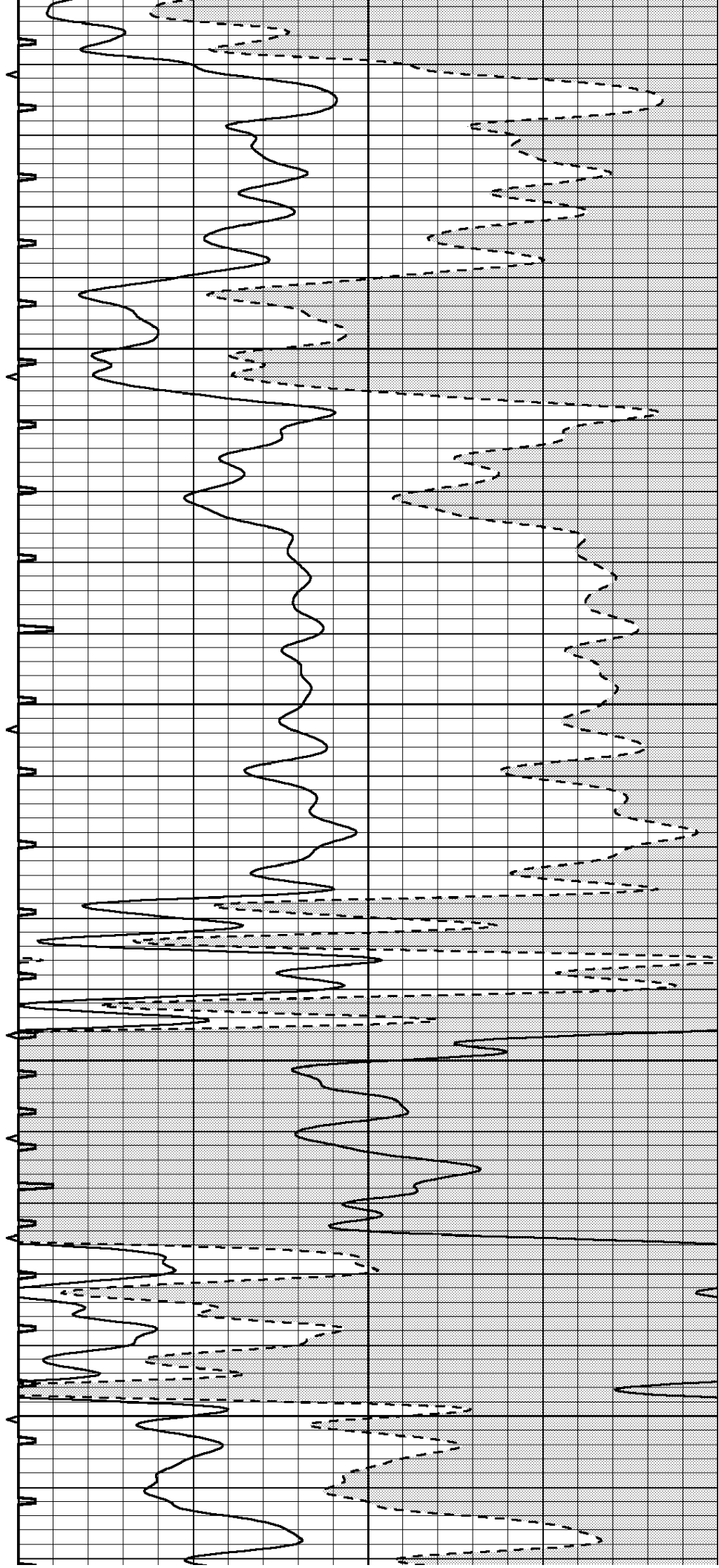


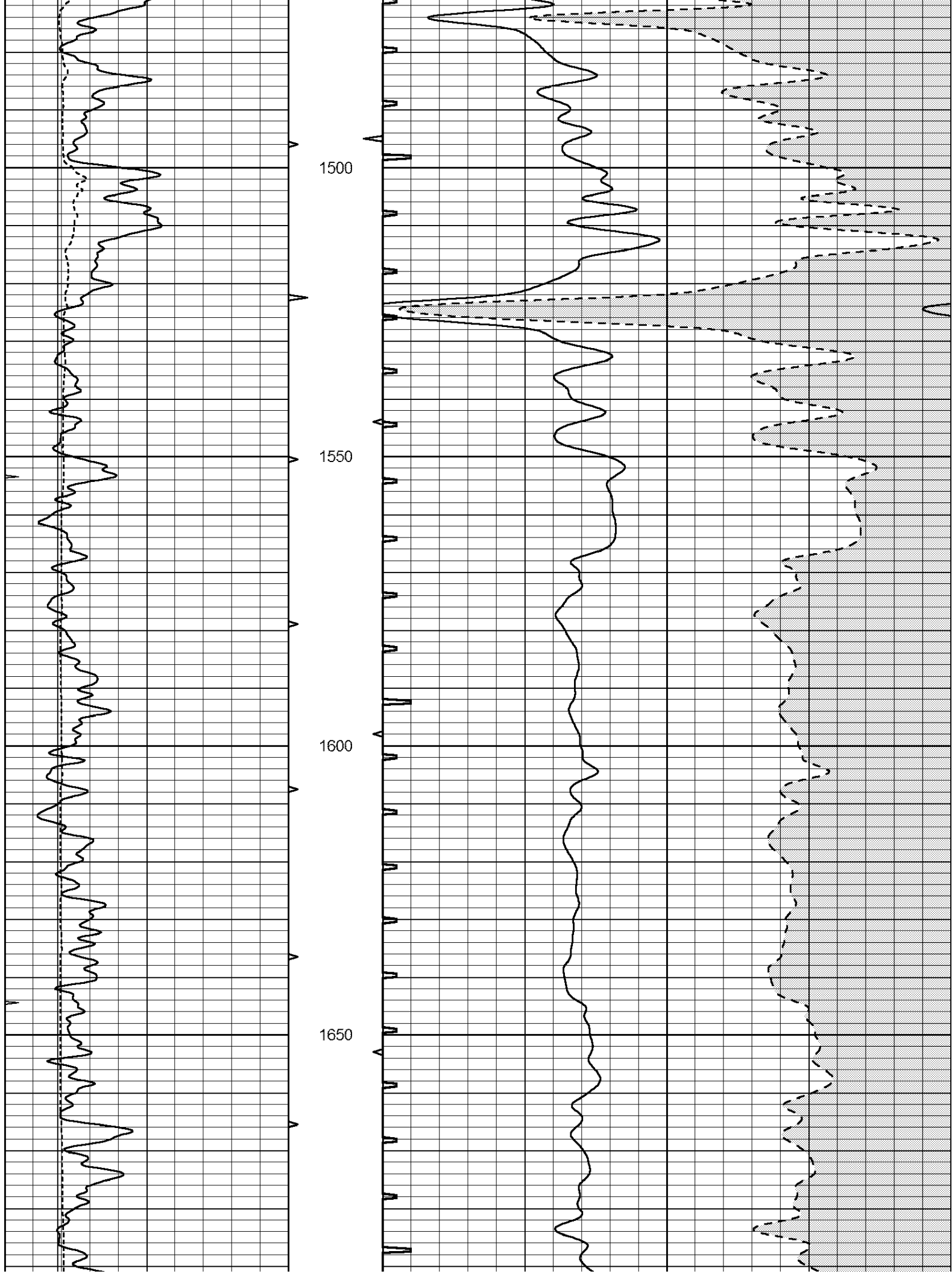
1300

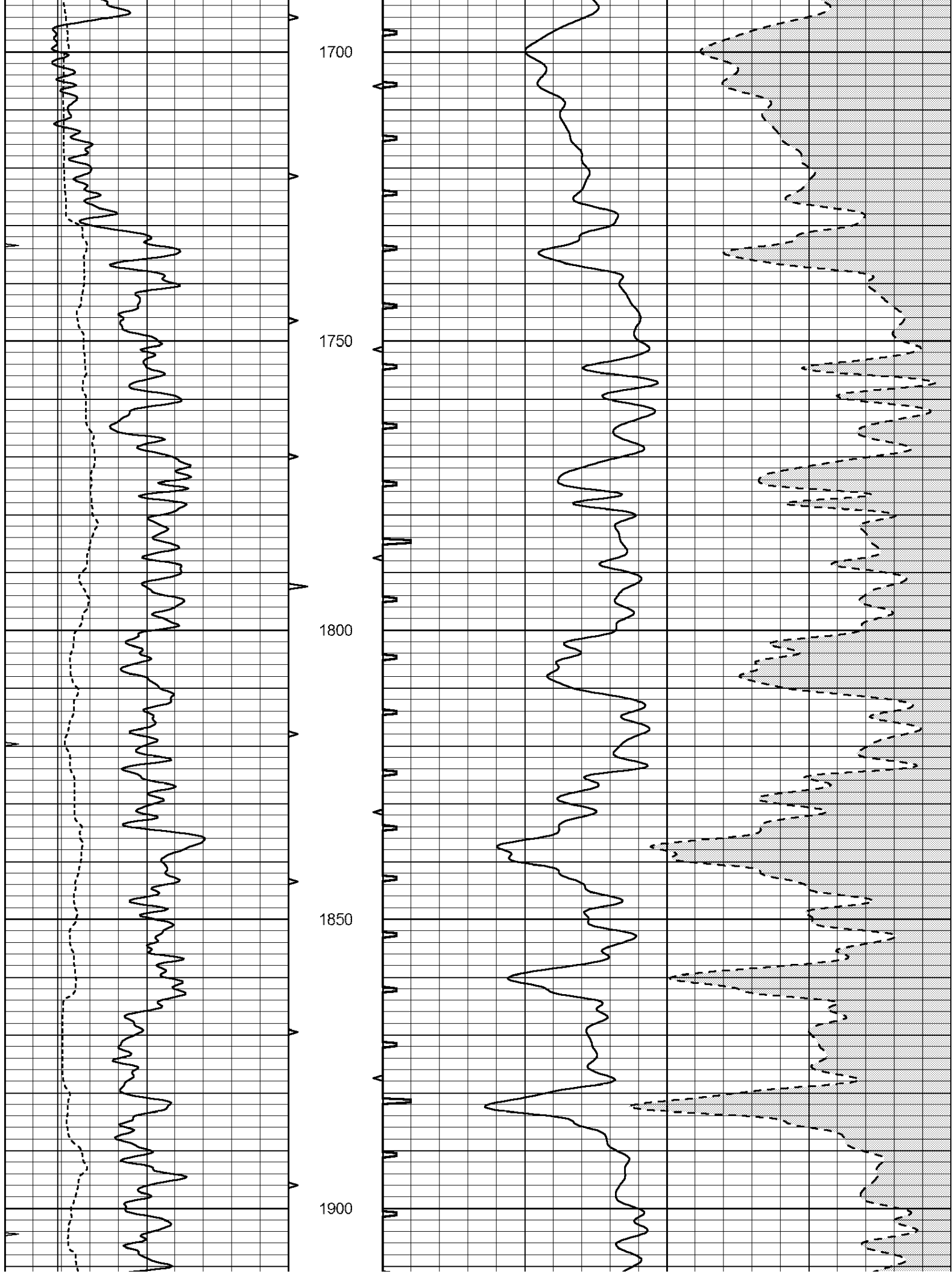
1350

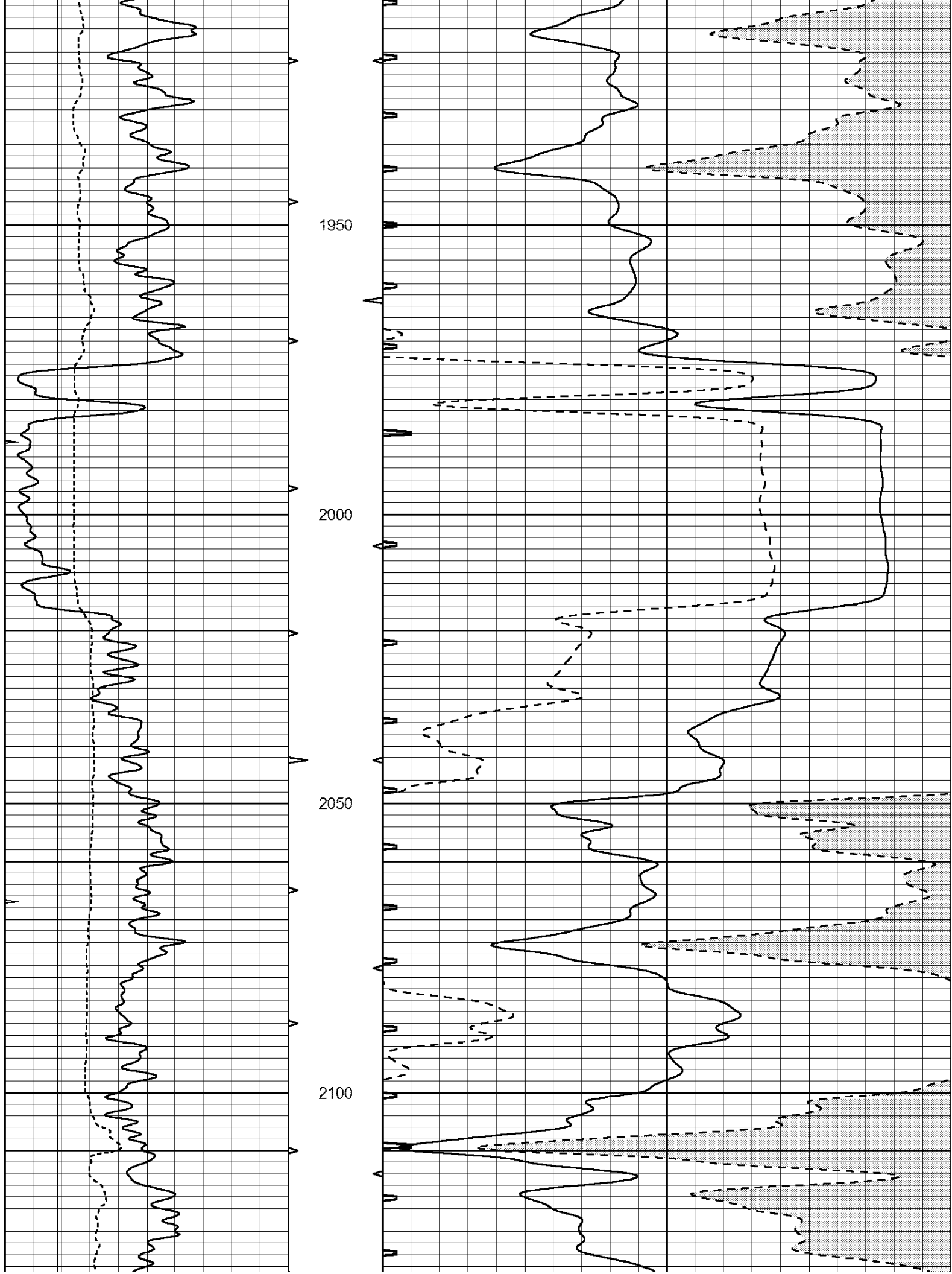
1400

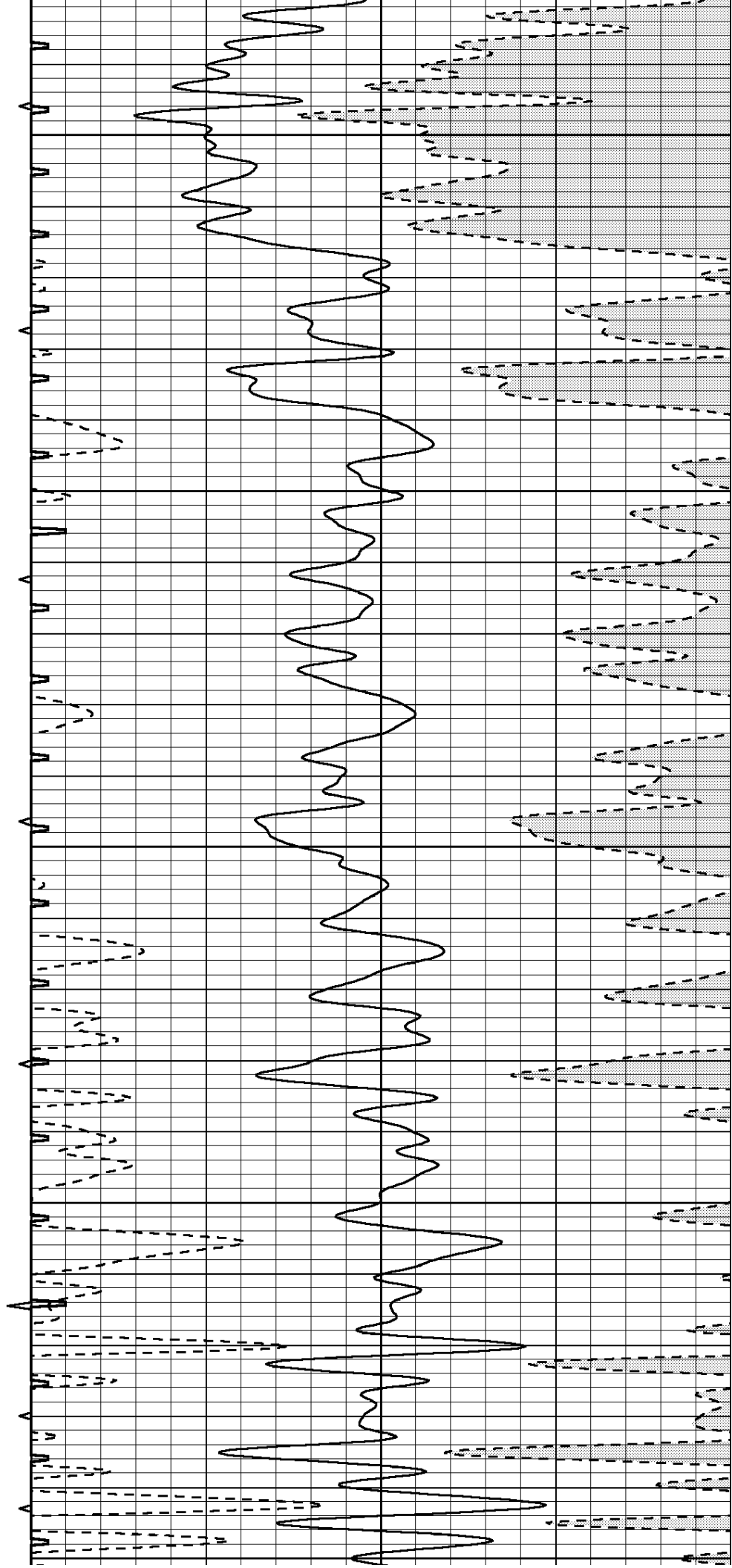
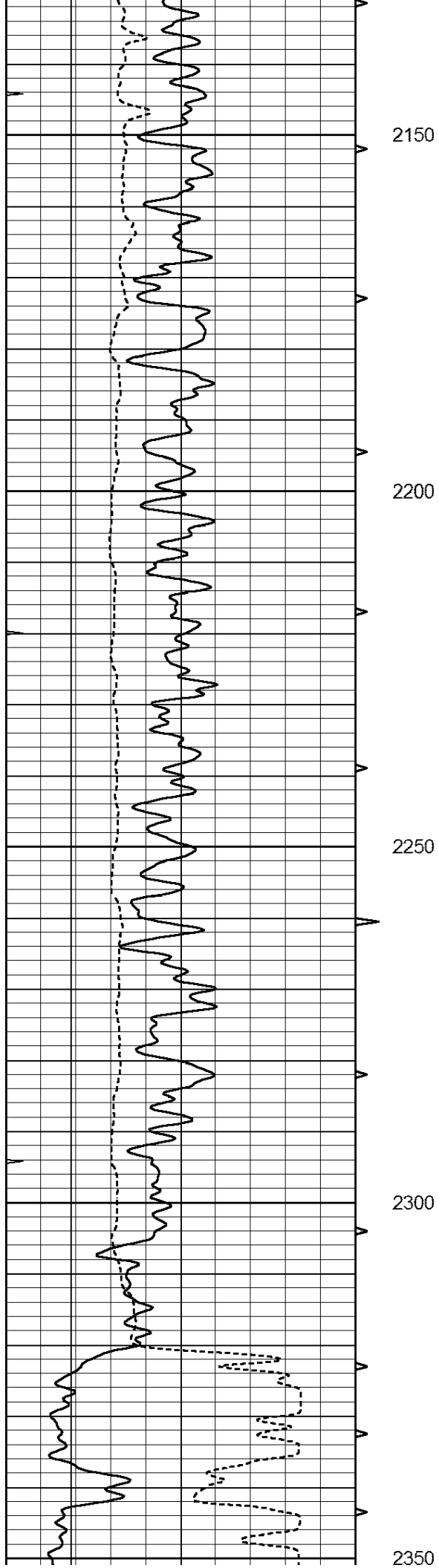
1450

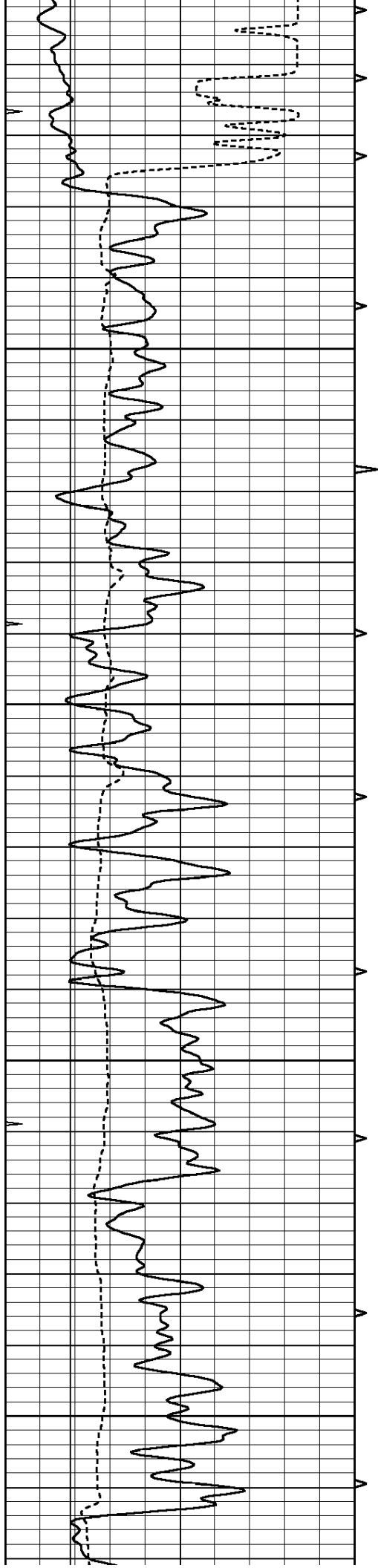










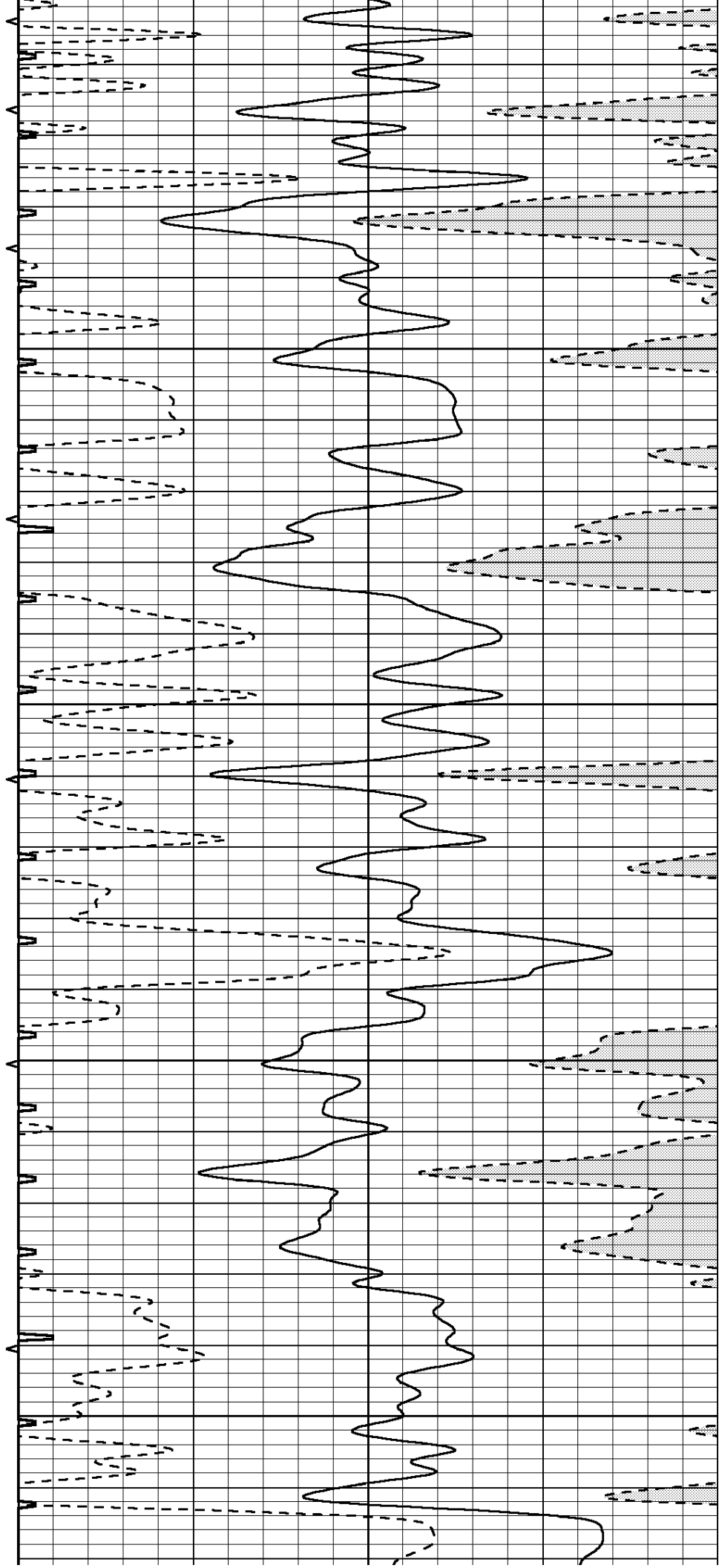


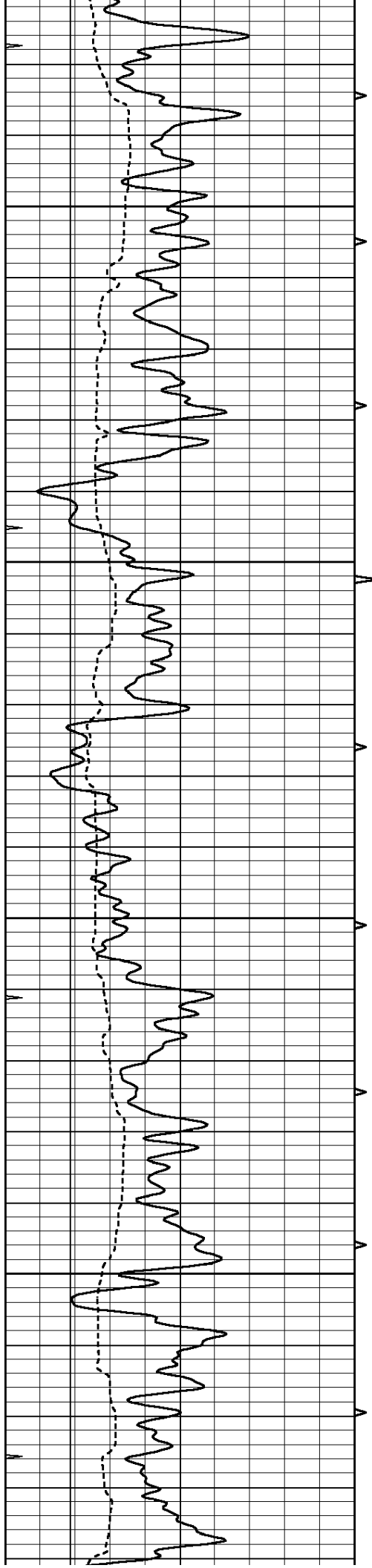
2400

2450

2500

2550



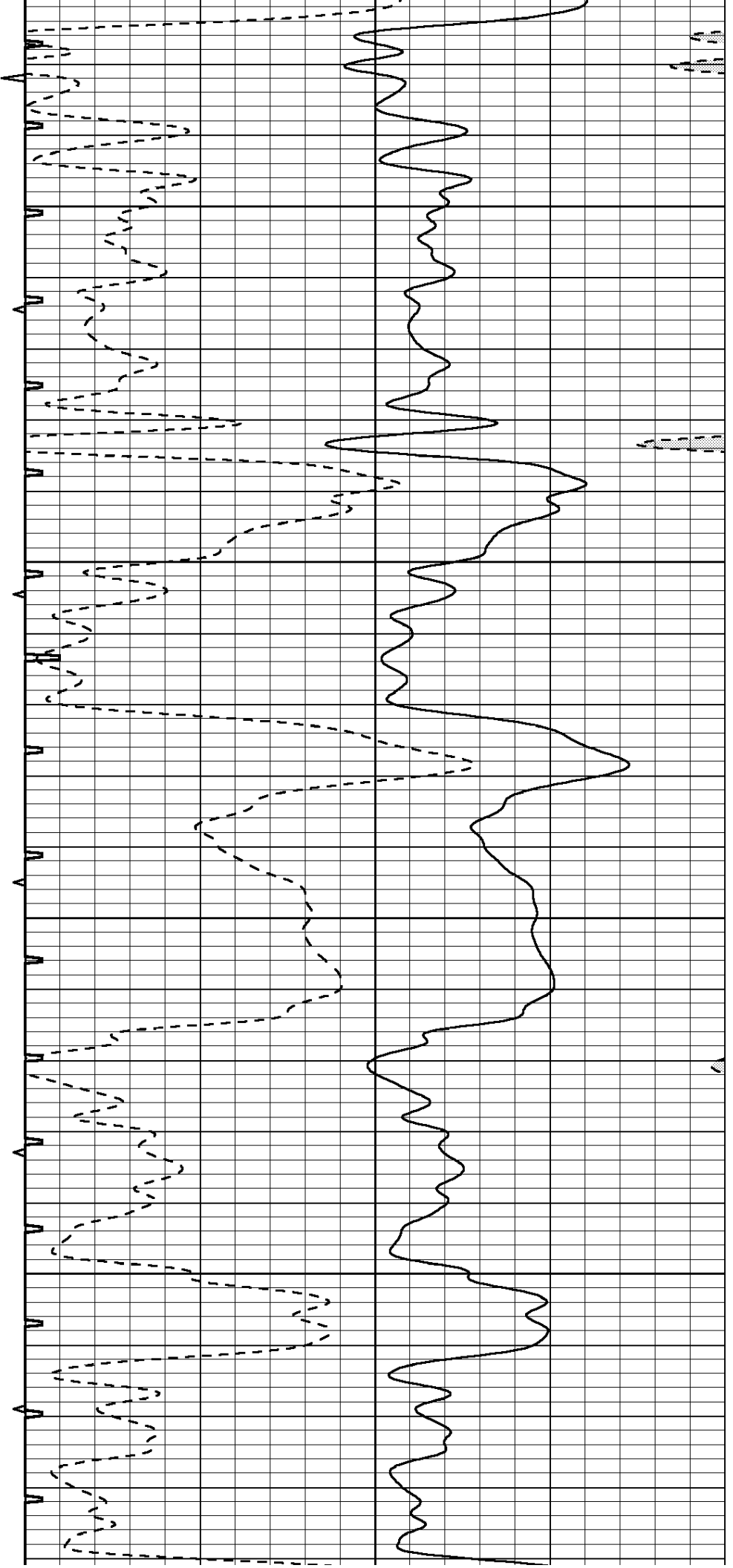


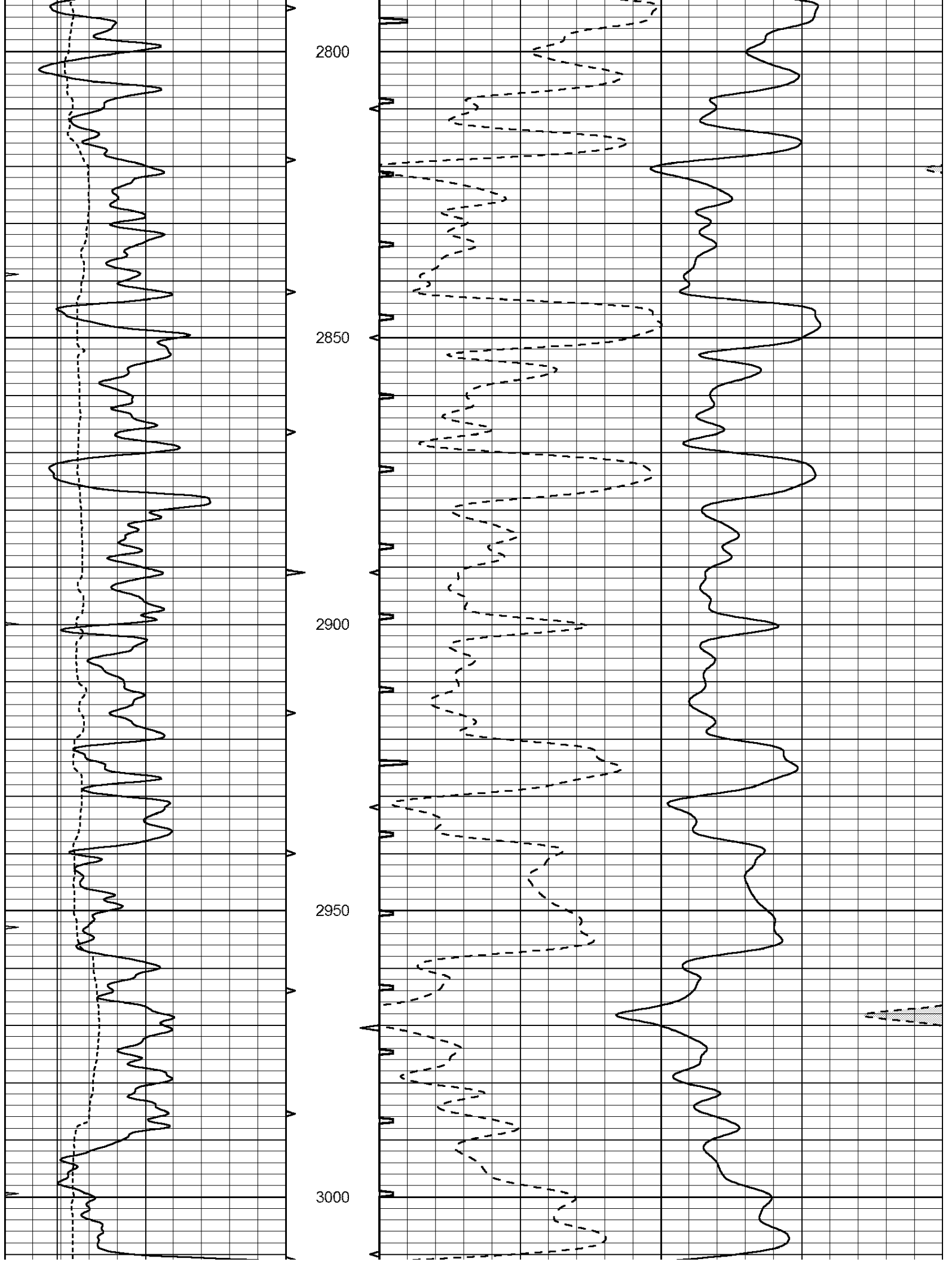
2600

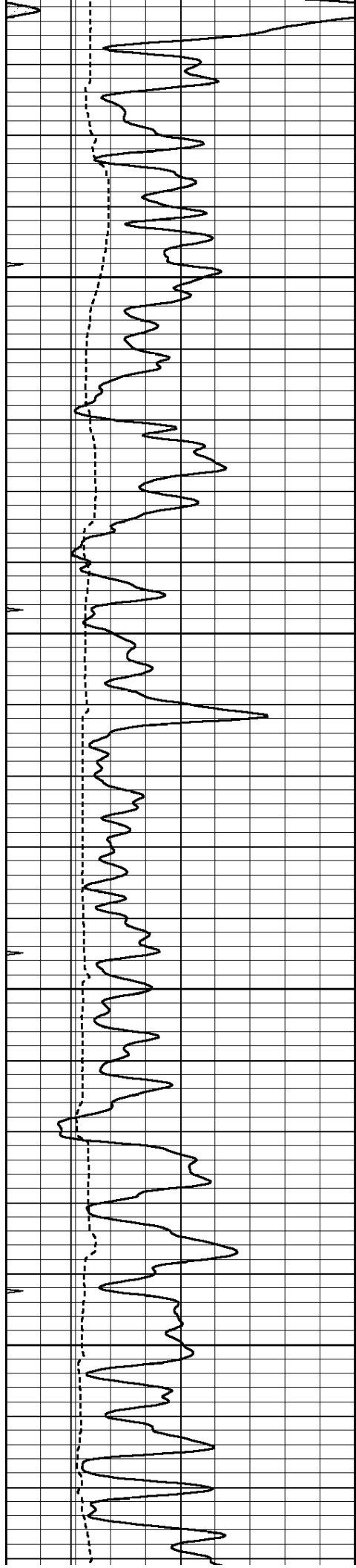
2650

2700

2750





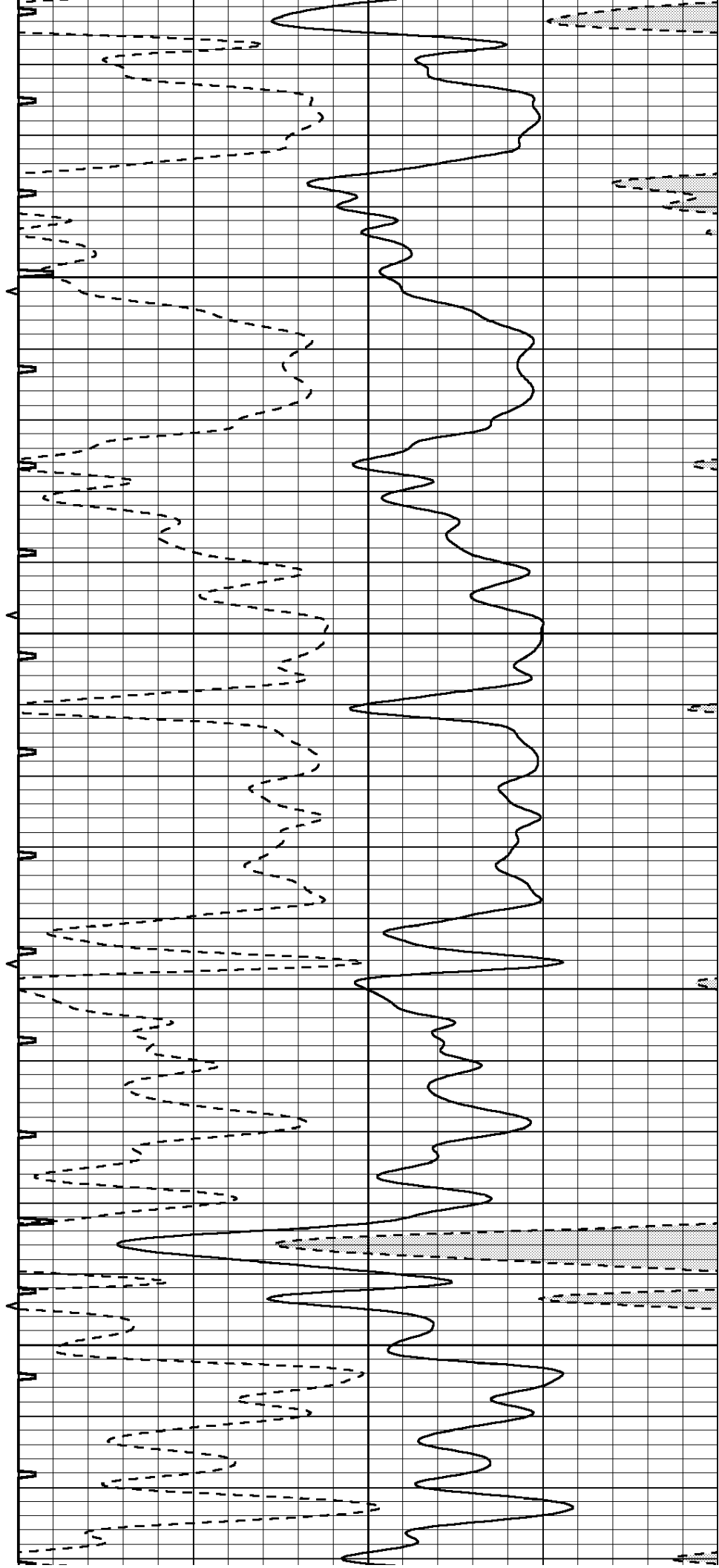


3050

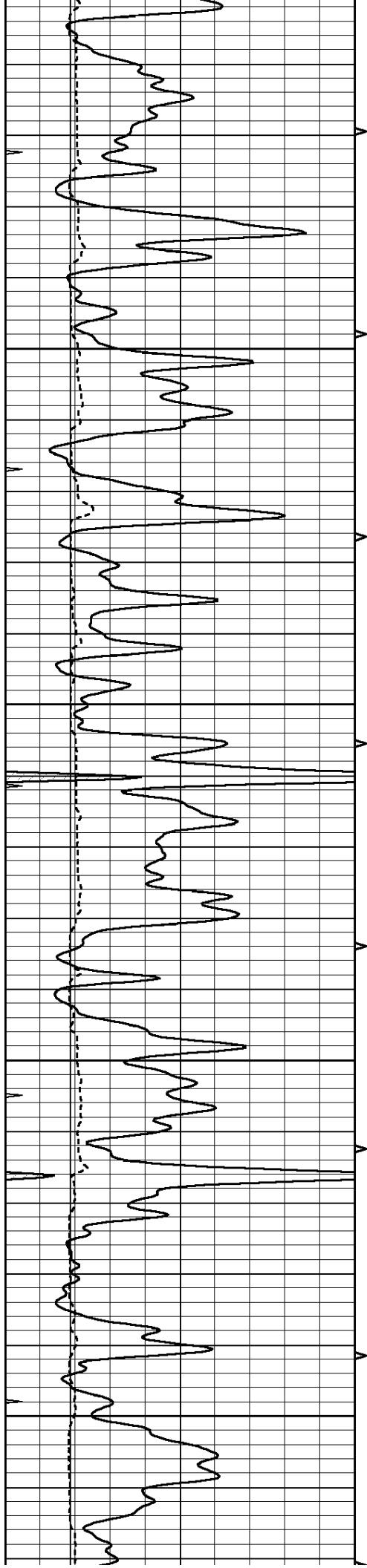
3100

3150

3200





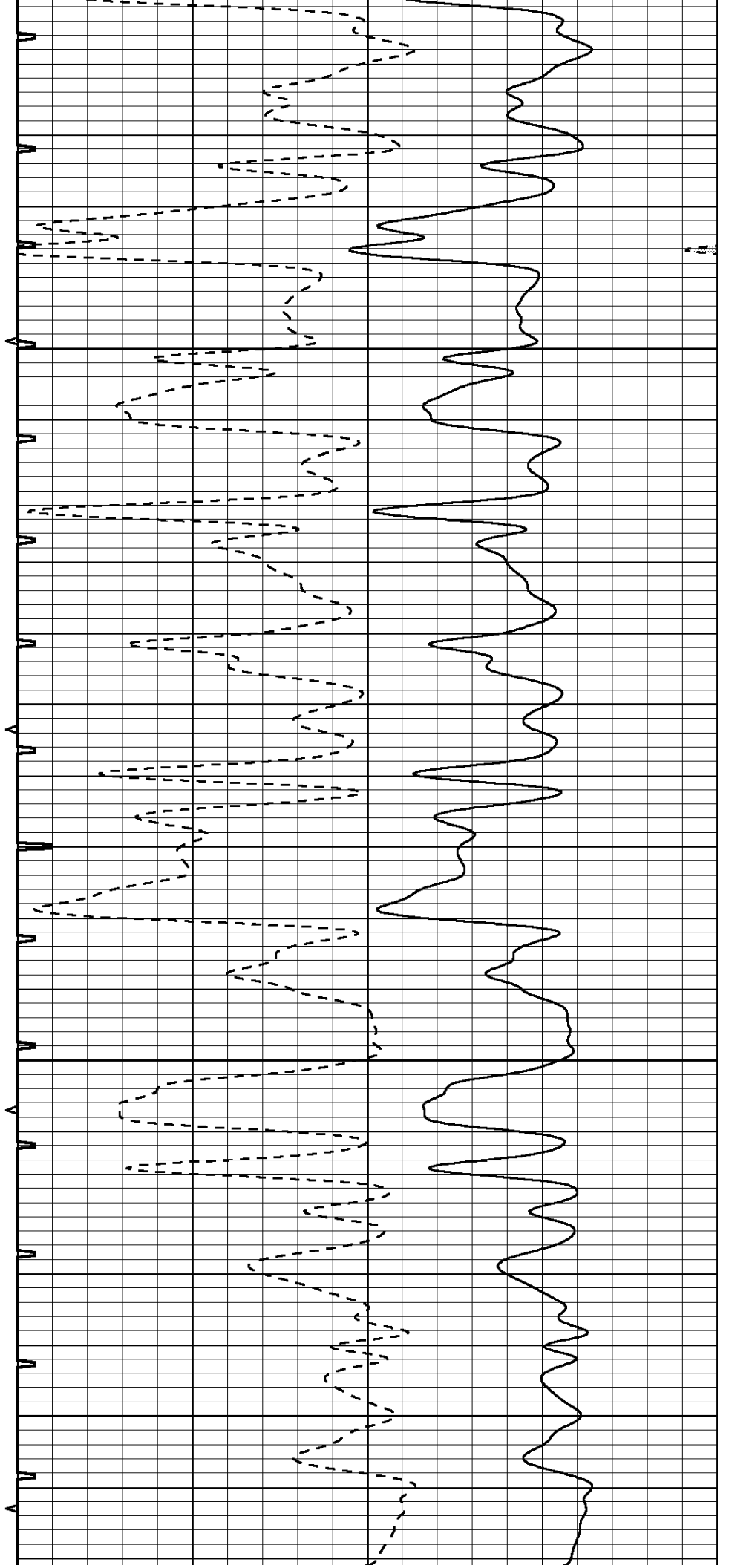


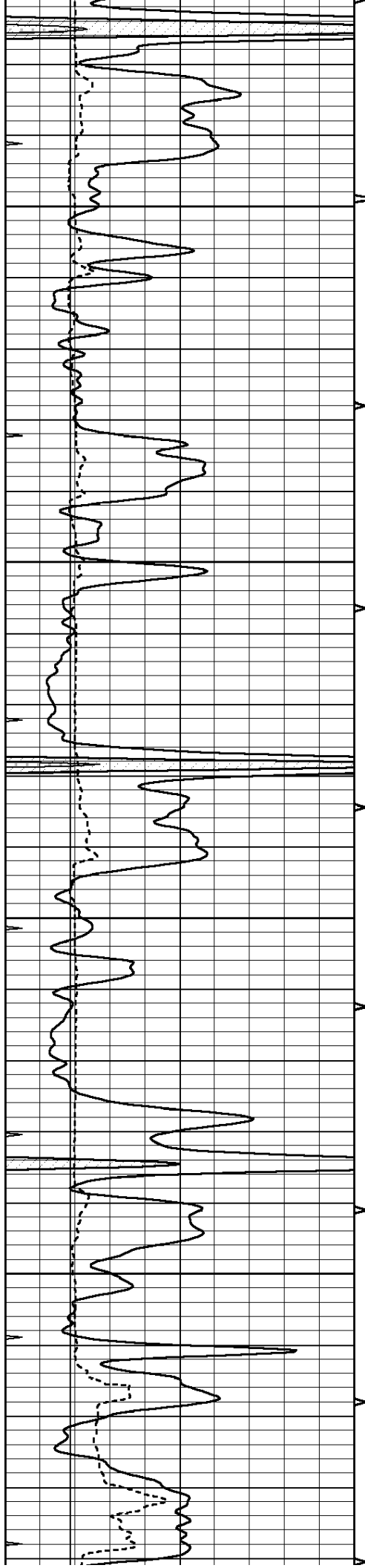
3500

3550

3600

3650



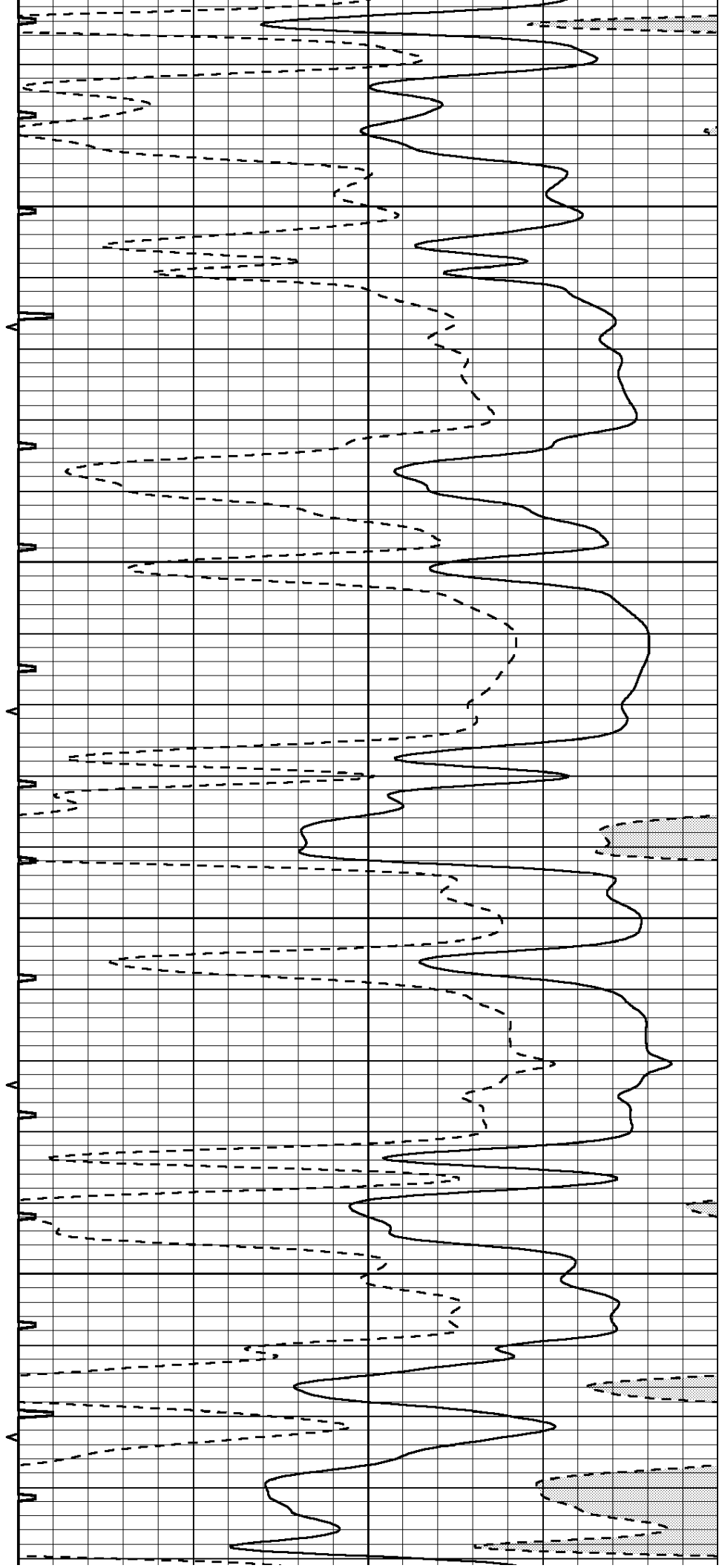


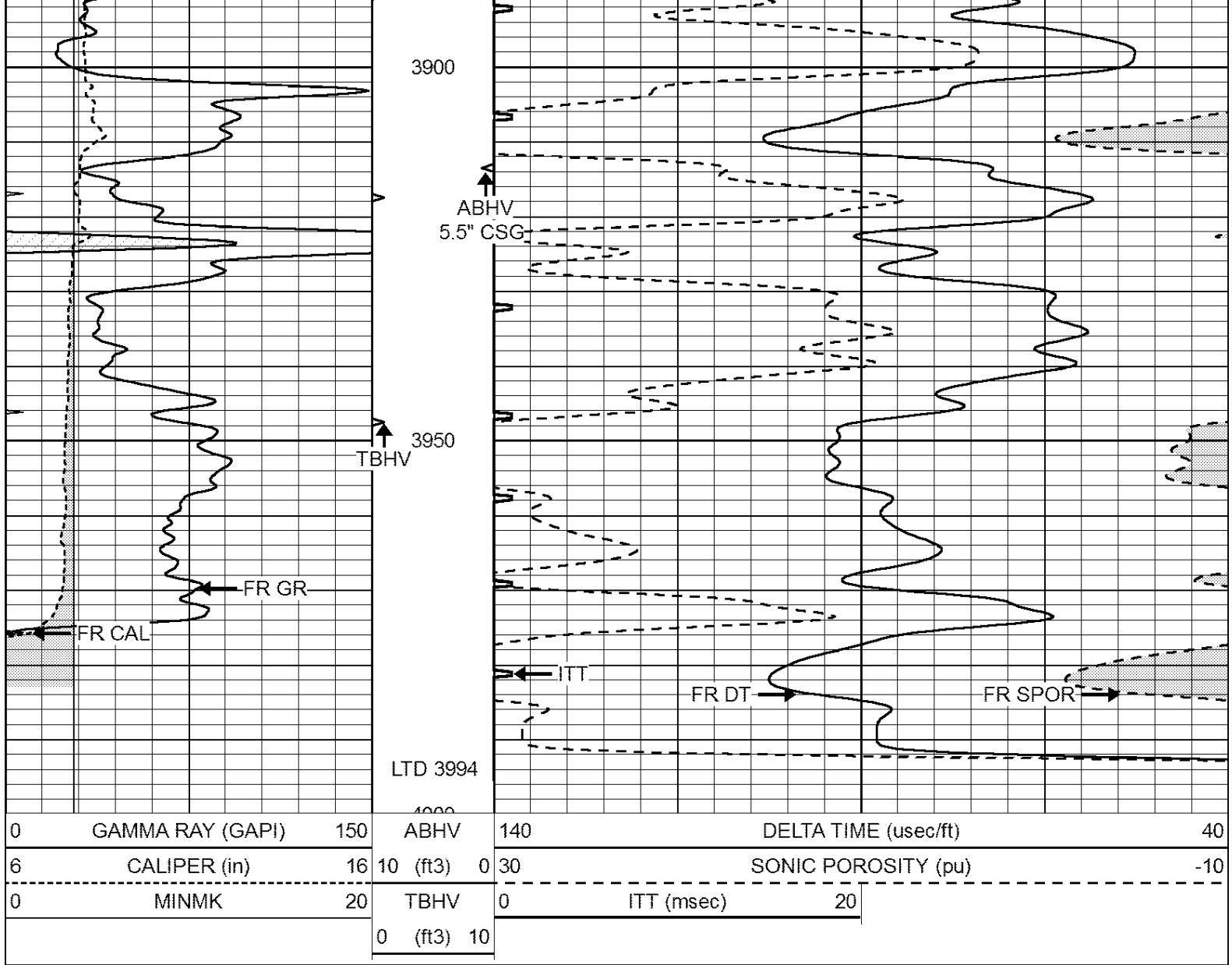
3700

3750

3800

3850

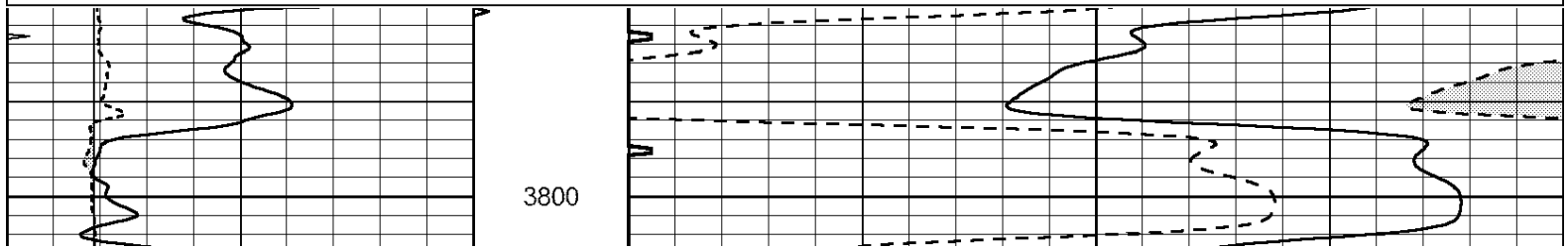


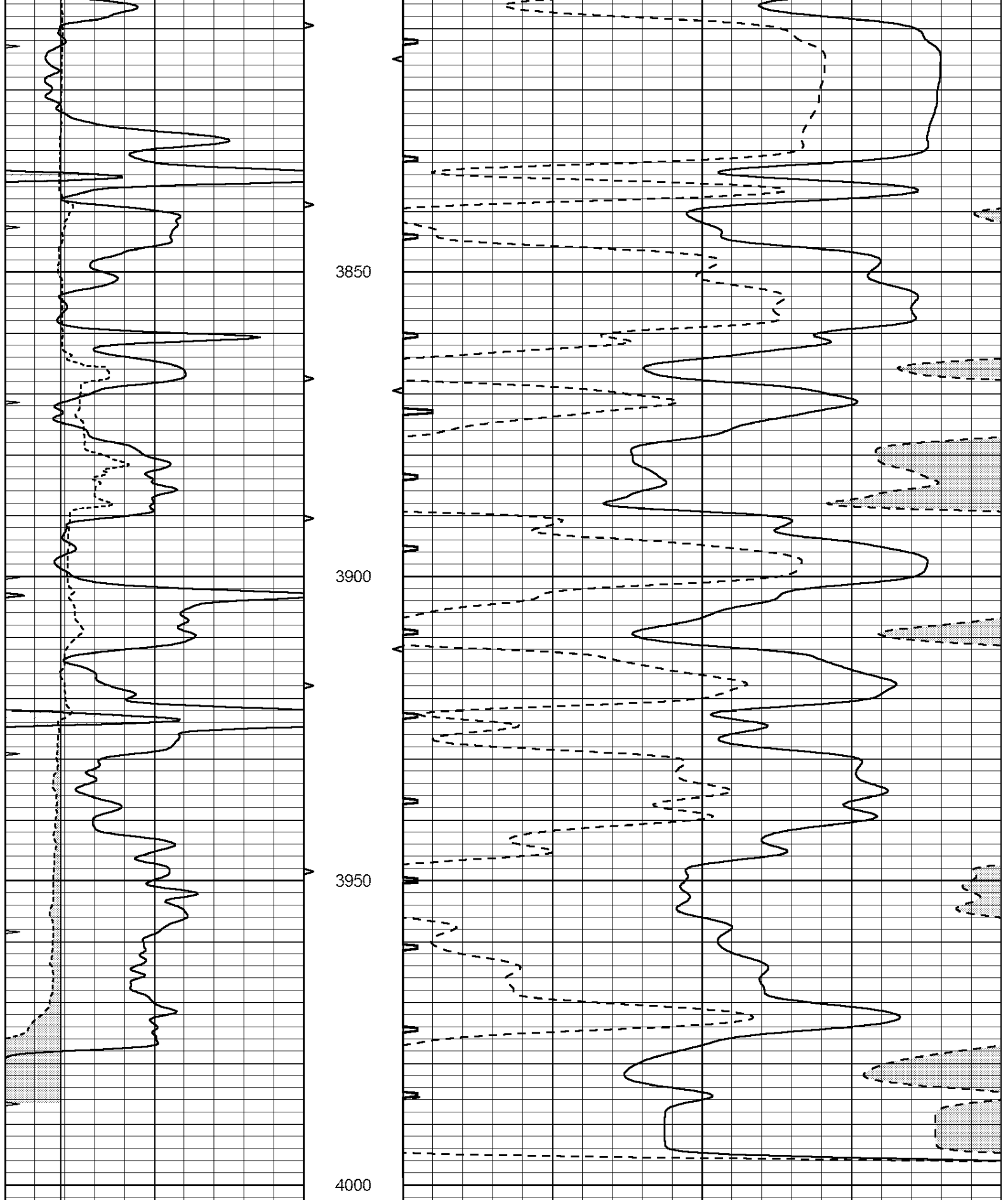


REPEAT SECTION

Database File: 23895ddn.db
 Dataset Pathname: pass5.1
 Presentation Format: _slt
 Dataset Creation: Mon Feb 17 00:54:59 2014 by Calc Open-Cased 090629
 Charted by: Depth in Feet scaled 1:240

0	GAMMA RAY (GAPI)	150	ABHV	140	DELTA TIME (usec/ft)	40
6	CALIPER (in)	16	10 (ft3)	0 30	SONIC POROSITY (pu)	-10
0	MINMK	20	TBHV	0	ITT (msec)	20
			0 (ft3)	10		





0	GAMMA RAY (GAPI)	150	ABHV	140	DELTA TIME (usec/ft)	40
6	CALIPER (in)	16	10 (ft3)	0 30	SONIC POROSITY (pu)	-10
0	MINMK	20	TBHV	0	ITT (msec)	20
			0 (ft3)	10		