



Pioneer Energy Services

# Microresistivity Log

API No.	15-109-21203-00-00		
Company	New Gulf Operating, LLC		
Well	CCP #1-28		
Field	Wildcat		
County	Logan	State	Kansas
Location	E2 SE SW SW 4950' FNL / 1220' FWL		
Sec: 28	Twp: 14S	Rge: 34W	Other Services CNL / CDL DIL

Permanent Datum	Ground Level	Elevation 3037	K.B. 3046 D.F. 3037 G.L. 3037
Log Measured From	Kelly Bushing	9 Ft. Above Perm. Datum	
Drilling Measured From	Kelly Bushing		
Date	9/27/2013		
Run Number	Two		
Depth Driller	4720		
Depth Logger	4720		
Bottom Logged Interval	4719		
Top Log Interval	3500		
Casing Driller	8.625 @ 264		
Casing Logger	260		
Bit Size	7.875		
Type Fluid in Hole	Chemical		
Salinity, ppm CL	7500		
Density / Viscosity	9.3	47	
pH / Fluid Loss	9.0	10.4	
Source of Sample	Flowline		
Rm @ Meas. Temp	0.24	@ 82	
Rmf @ Meas. Temp	0.18	@ 82	
Rmc @ Meas. Temp	0.32	@ 82	
Source of Rmf / Rmc	Charts		
Rm @ BHT	0.16	@ 123	
Operating Rig Time	5 Hours		
Max Rec. Temp. F	123		
Equipment Number	15		
Location	Hays		
Recorded By	R. Barnhart		
Witnessed By	Steve Murphy		

<<< Fold Here >>>

All interpretations are opinions based on inferences from electrical or other measurements and we cannot and do not guarantee the accuracy or correctness of any interpretation, and we shall not, except in the case of gross or willful negligence on our part, be liable or responsible for any loss, costs, damages, or expenses incurred or sustained by anyone resulting from any interpretation made by any of our officers, agents or employees. These interpretations are also subject to our general terms and conditions set out in our current Price Schedule.

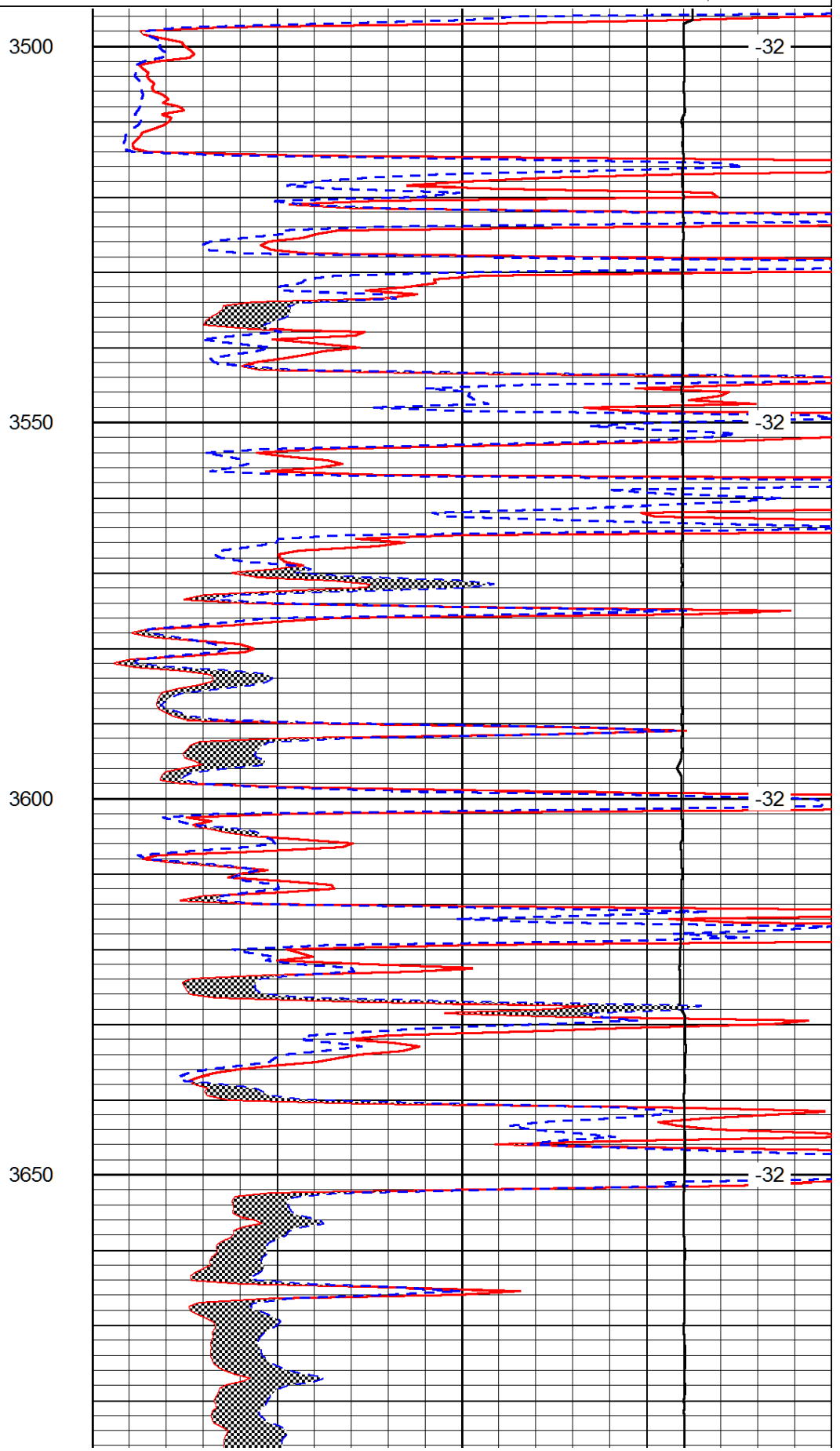
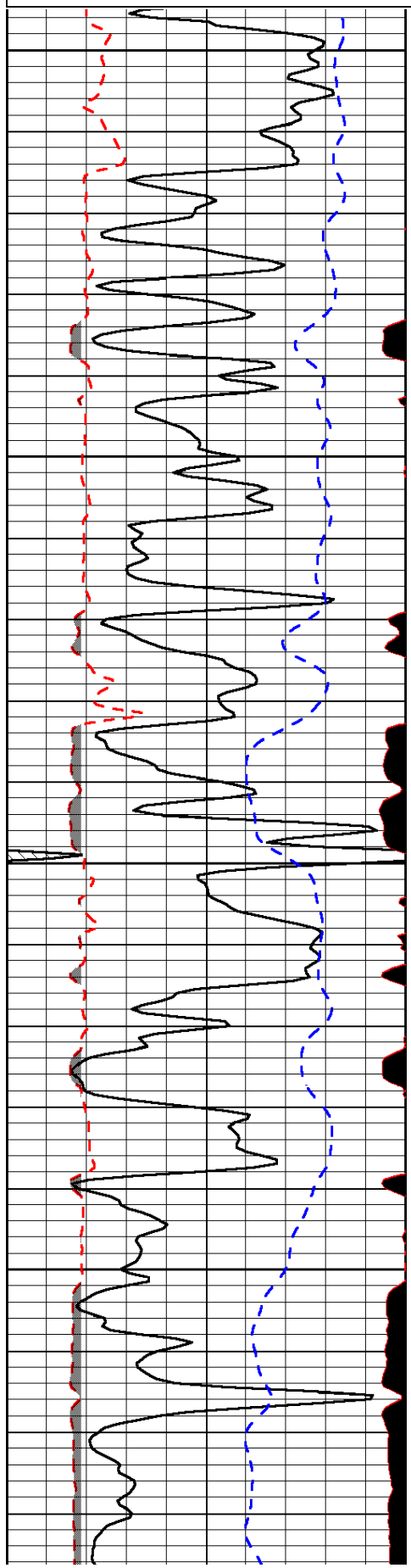
Comments

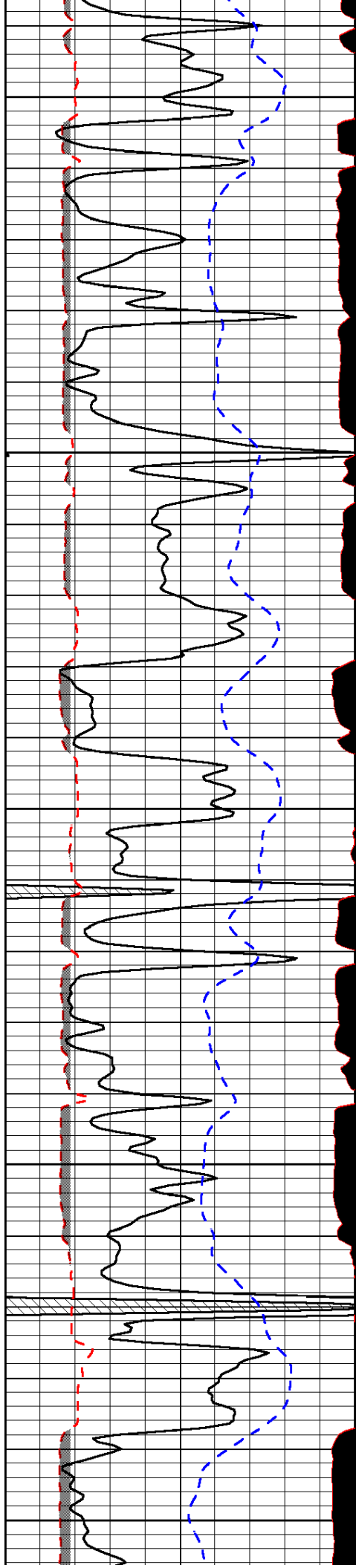
Thank you for using Log-Tech, Inc.  
(785) 625-3858

Russell Springs, KS:  
E edge to 270 Rd., 7S, 3E, S into

0	Gamma Ray (GAPI)	150
6	MCAL (in)	16
2.875	Mud Cake (in)	7.875
-200	SP (mV)	0

0	Micro Inverse 1 X 1 (Ohm-m)	40
0	Micro Normal 2" (Ohm-m)	40
10000	Line Weight (lb)	0
	LSPD (ft/min)	





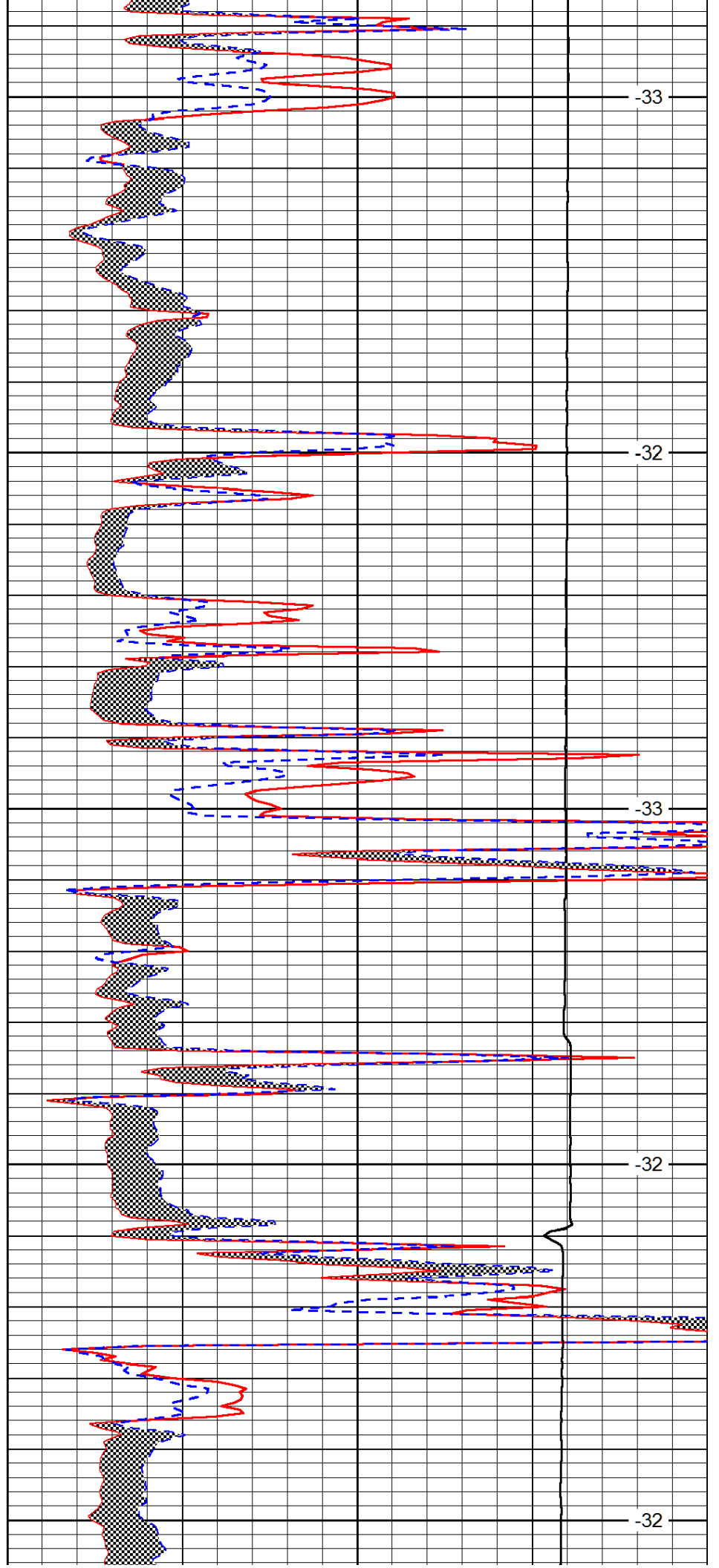
3700

3750

3800

3850

3900



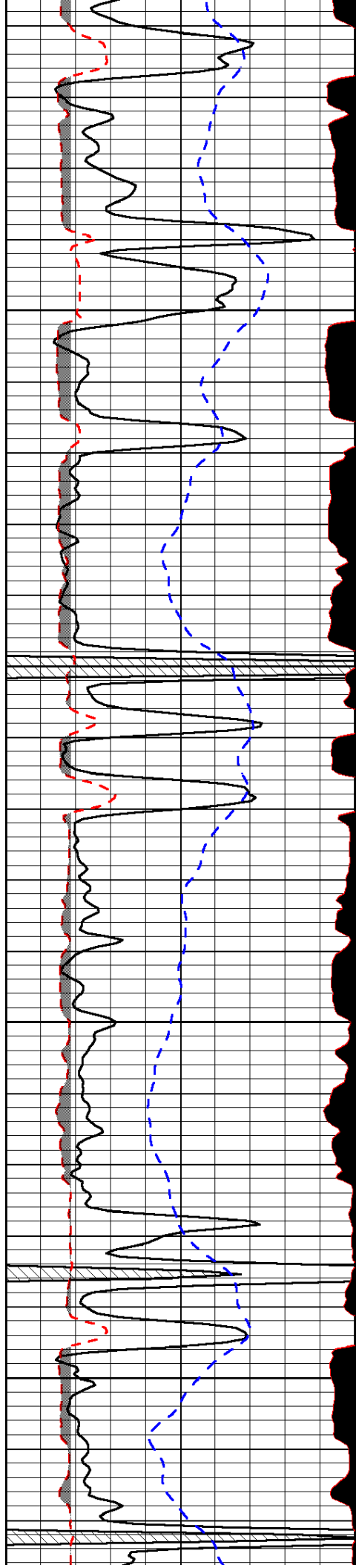
-33

-32

-33

-32

-32

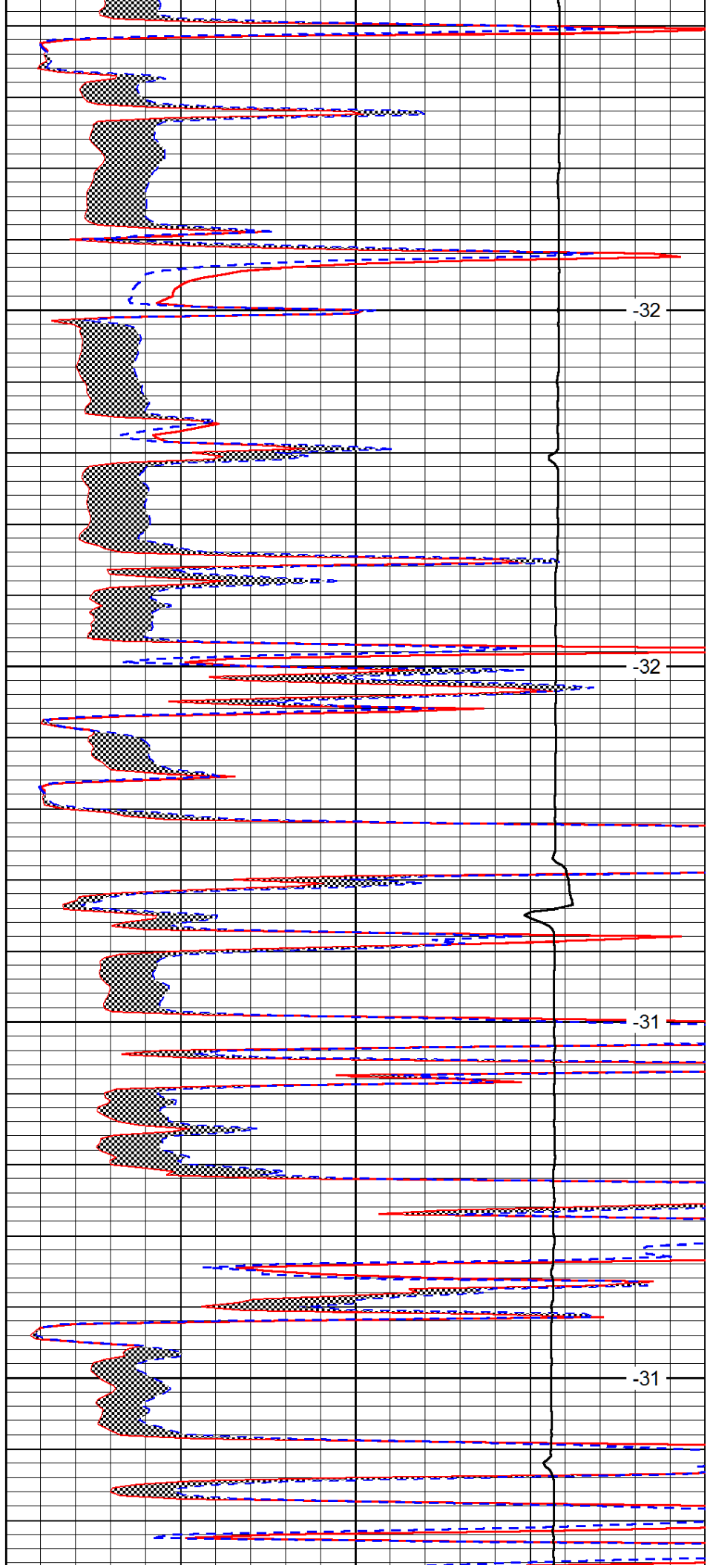


3950

4000

4050

4100

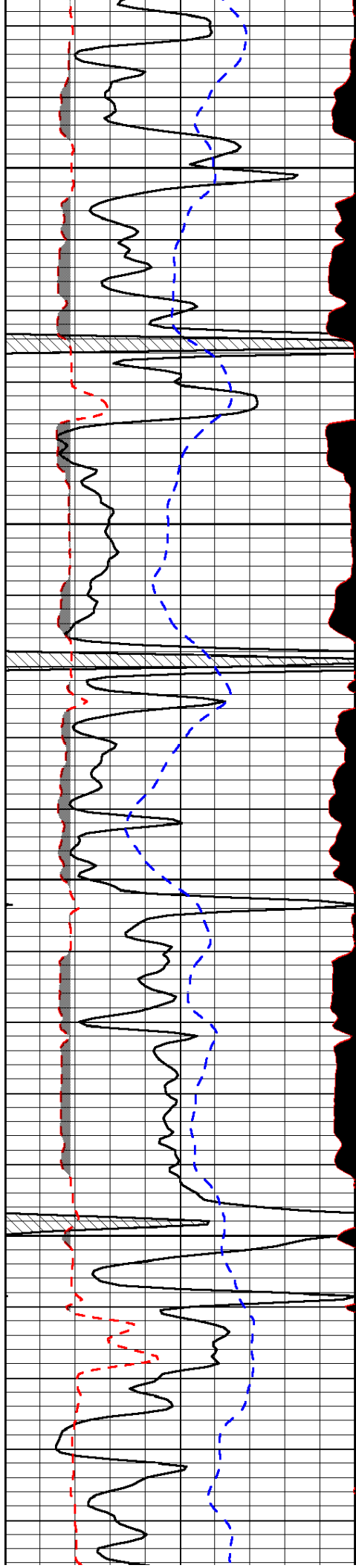


-32

-32

-31

-31

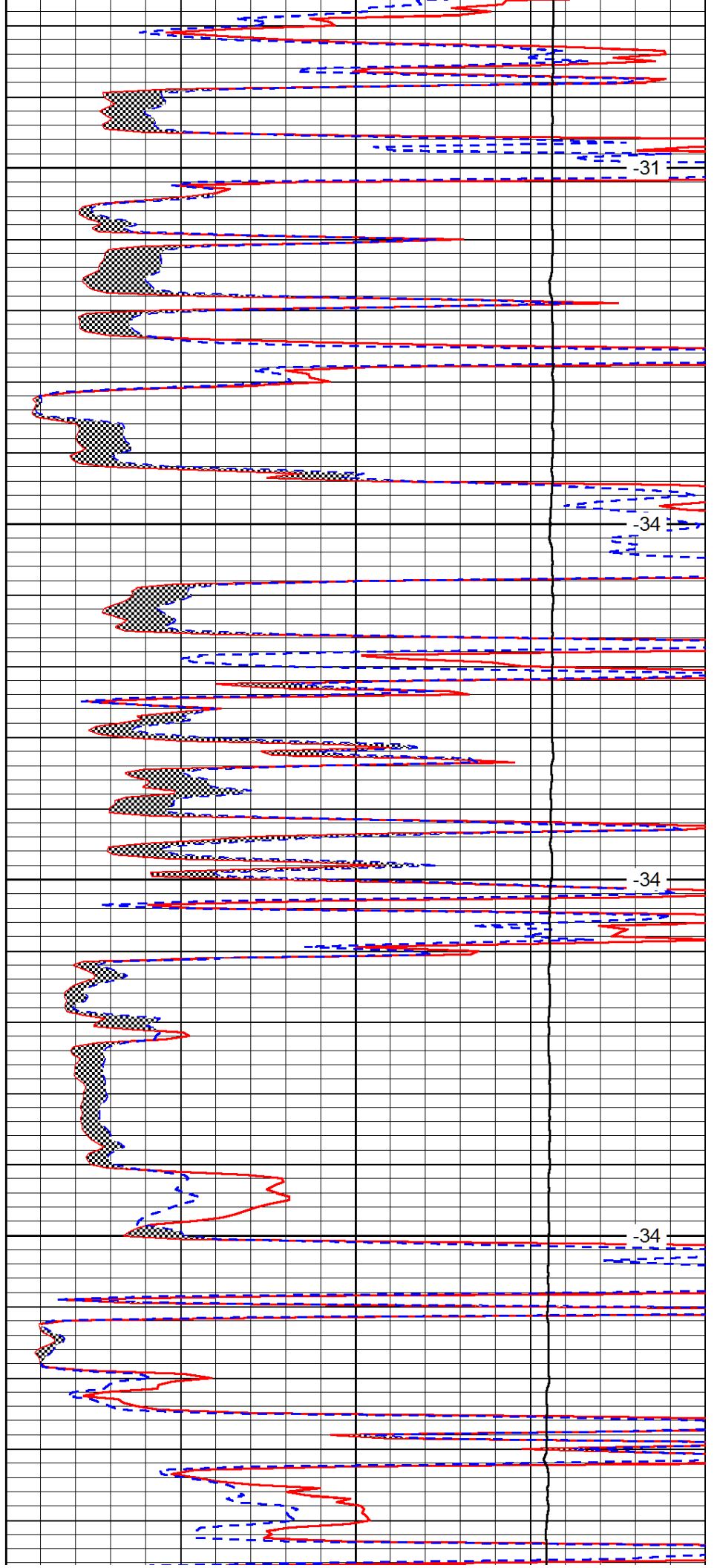


4150

4200

4250

4300

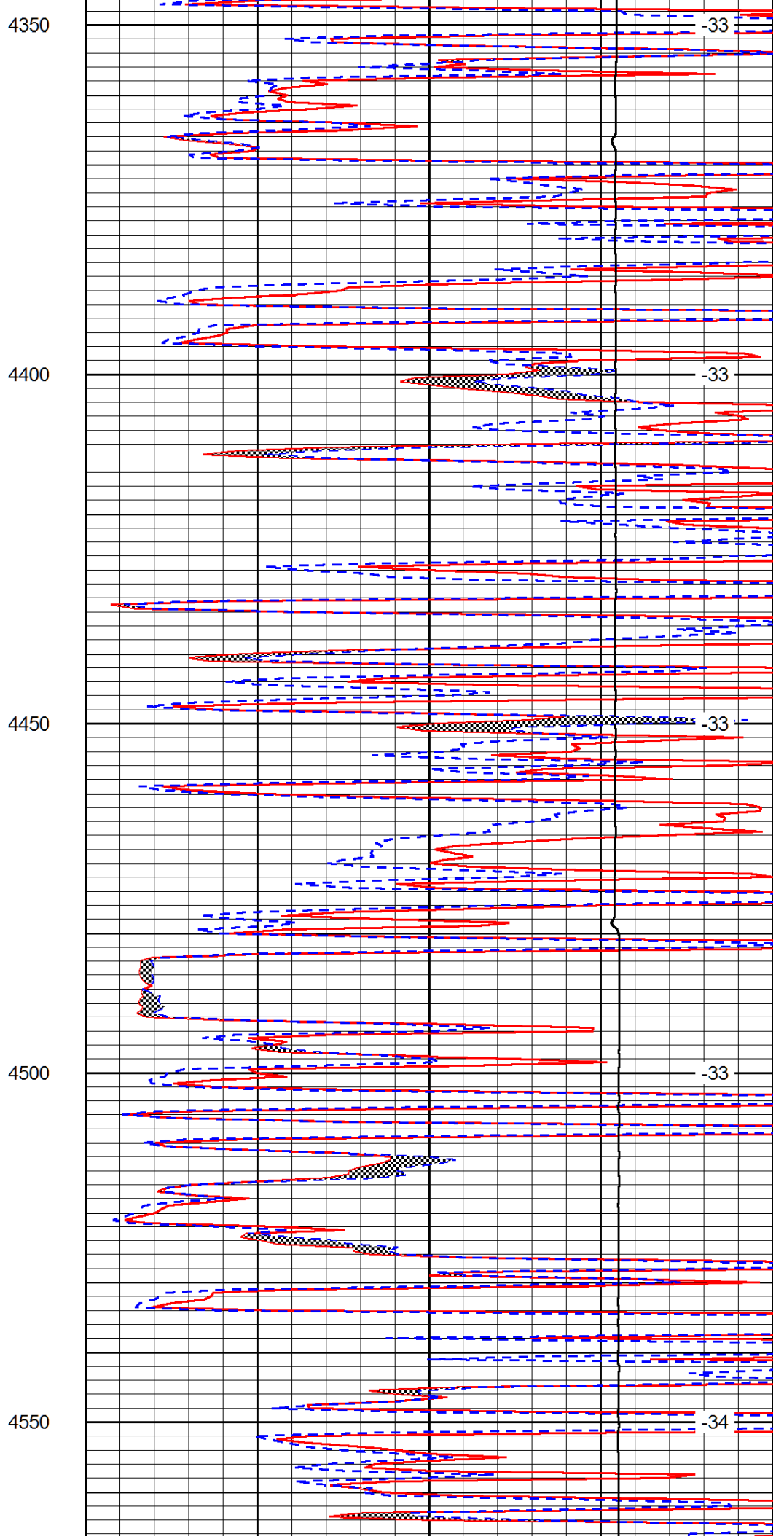
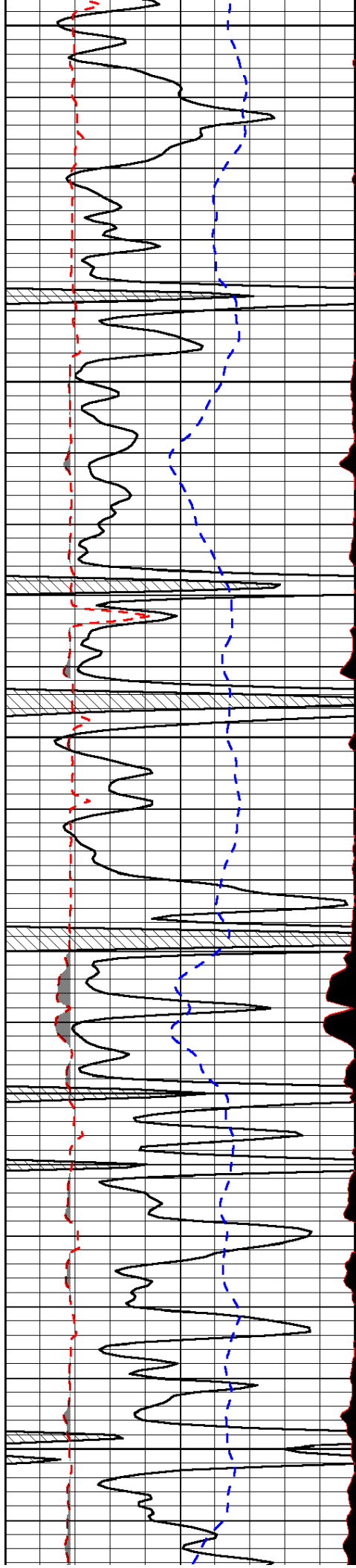


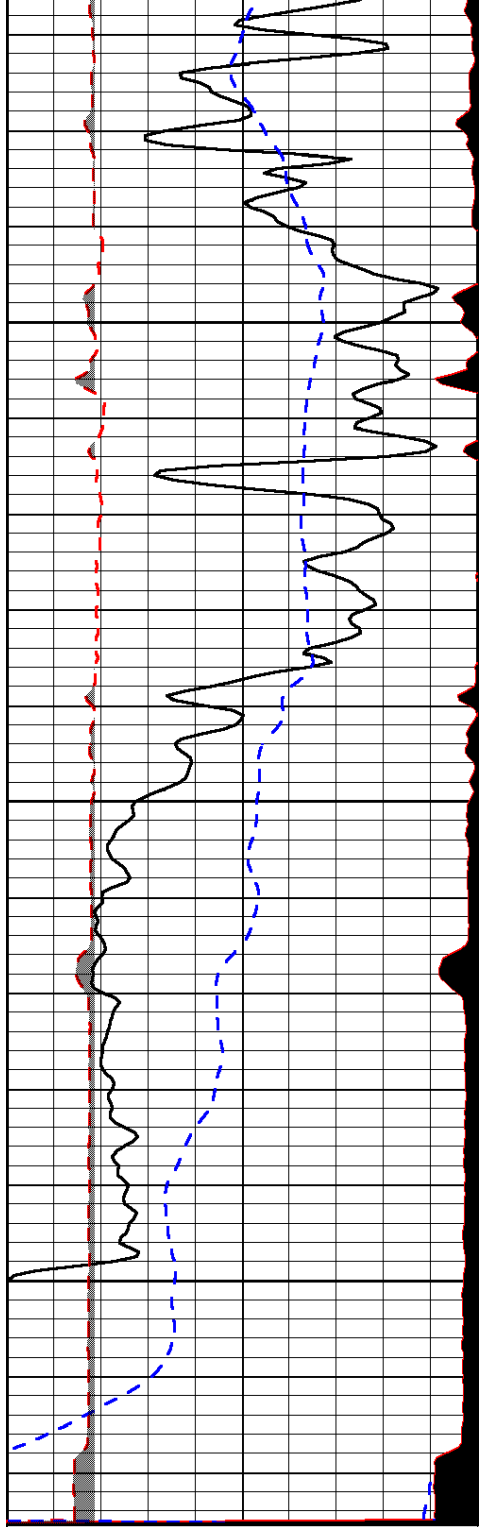
-31

-34

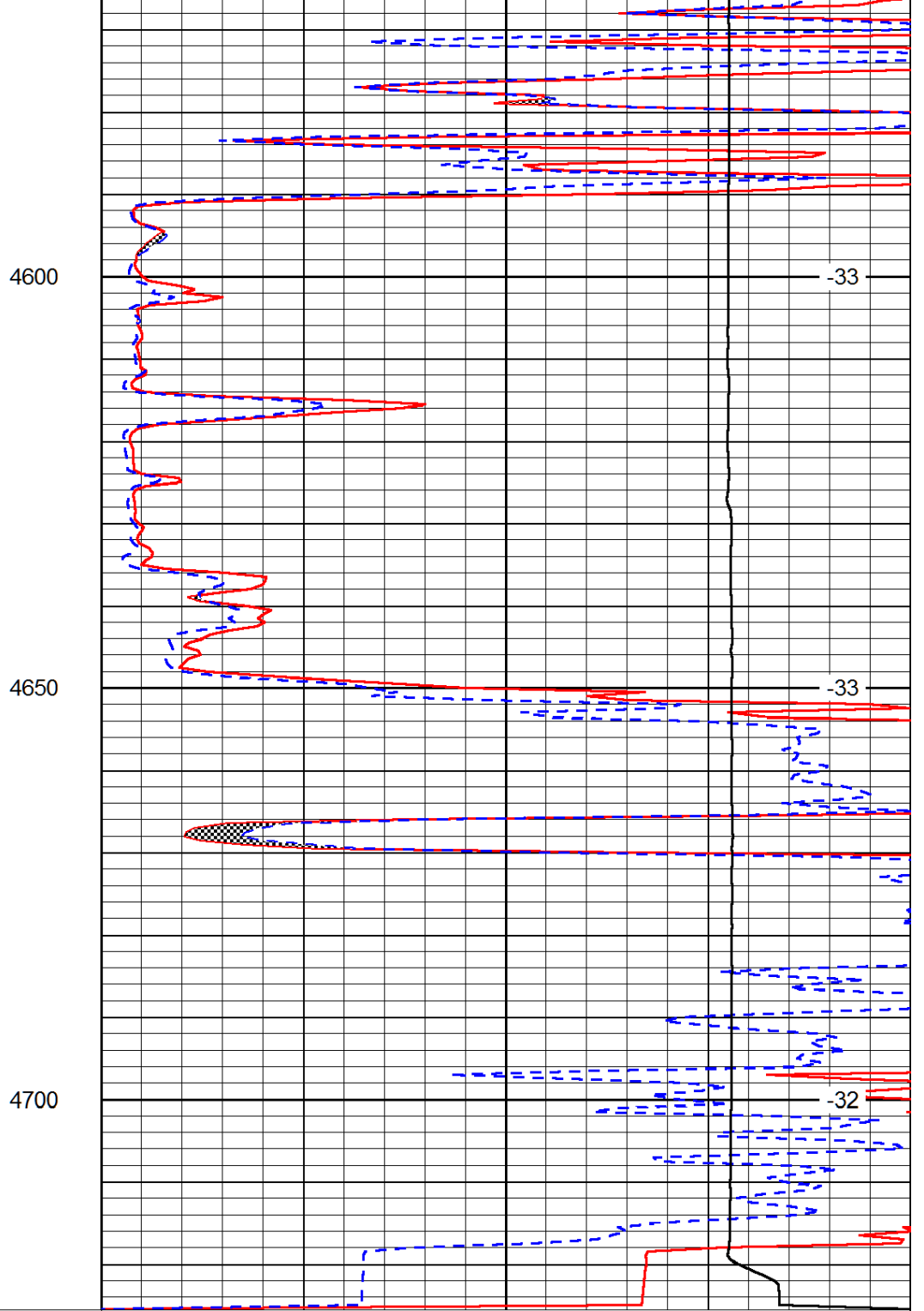
-34

-34





0	Gamma Ray (GAPI)	150
6	MCAL (in)	16
2.875	Mud Cake (in)	7.875
-200	SP (mV)	0



0	Micro Inverse 1 X 1 (Ohm-m)	40
0	Micro Normal 2" (Ohm-m)	40
10000	Line Weight (lb)	0

LSPD  
(ft/min)