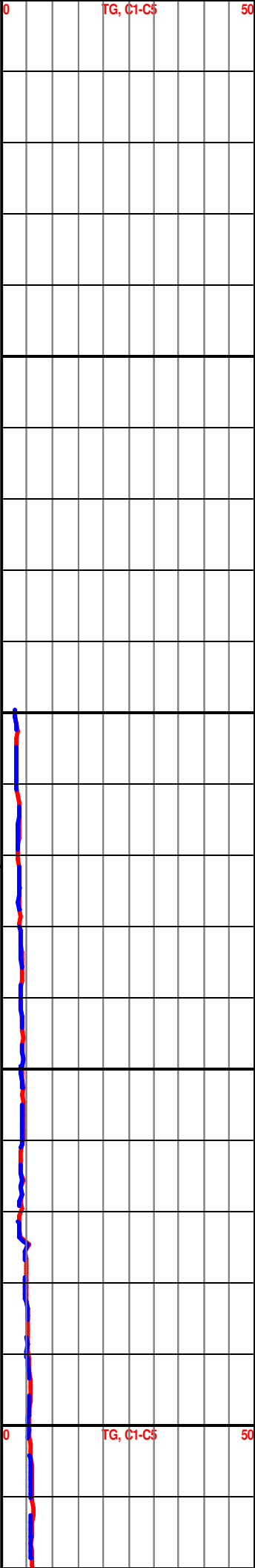


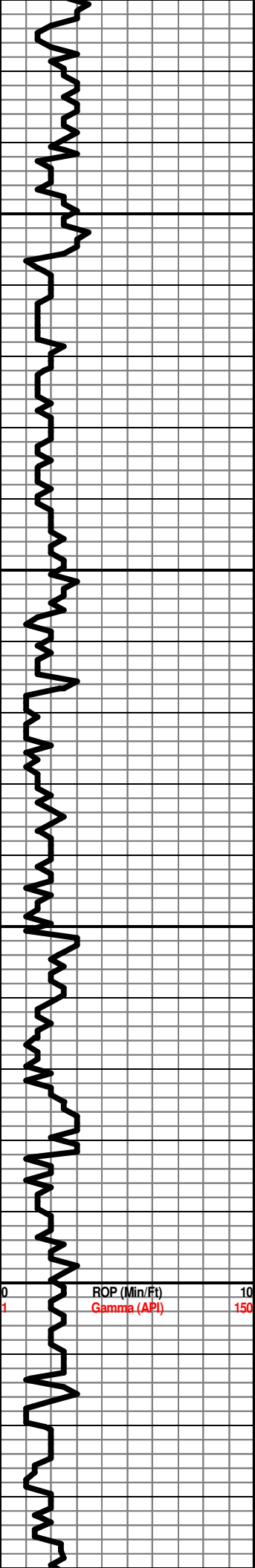
Anhydrite Top - 2412 (+634)
Anhydrite Base - 2434 (+612)

STOTLER 3522 (-476)

LS: crm-brn-gry, fxl, foss, sl chalky,
pr inxln por, NS

SH: gry-grn-blk w/LS: as above





3650
3700
3750
3800

LS: crm-brn-gry, vfxln, v. foss, dense, NS

TOPEKA 3642 (-1596)

SH: blk-brn-gry-red w/tan-gry, foss LS, NS

LS: crm-tan-gry, vfxln, dense, foss, NS

LS: crm-tan, vfxln, dense, oolitic, chalky, NS

LS: tan-gry, fxln, foss-oolitic, dense, sl chalky, NS

LS: as above

LS: as above

LS: tan-gry, fxln, foss, chalky, NS w/abund gry-blk shale

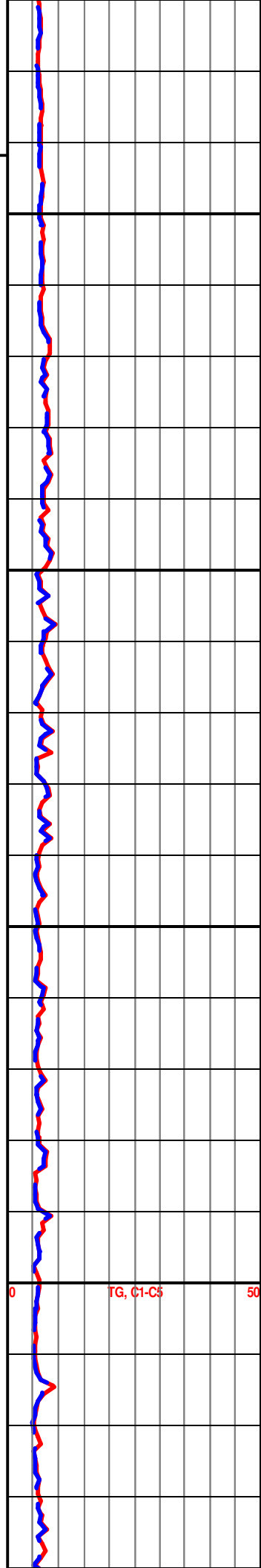
LS: crm-tan, fxln, foss, dense, sl chalky, NS w/abund gry-grn shale

LS: crm-tan, vfxln, foss, dense, chalky, NS

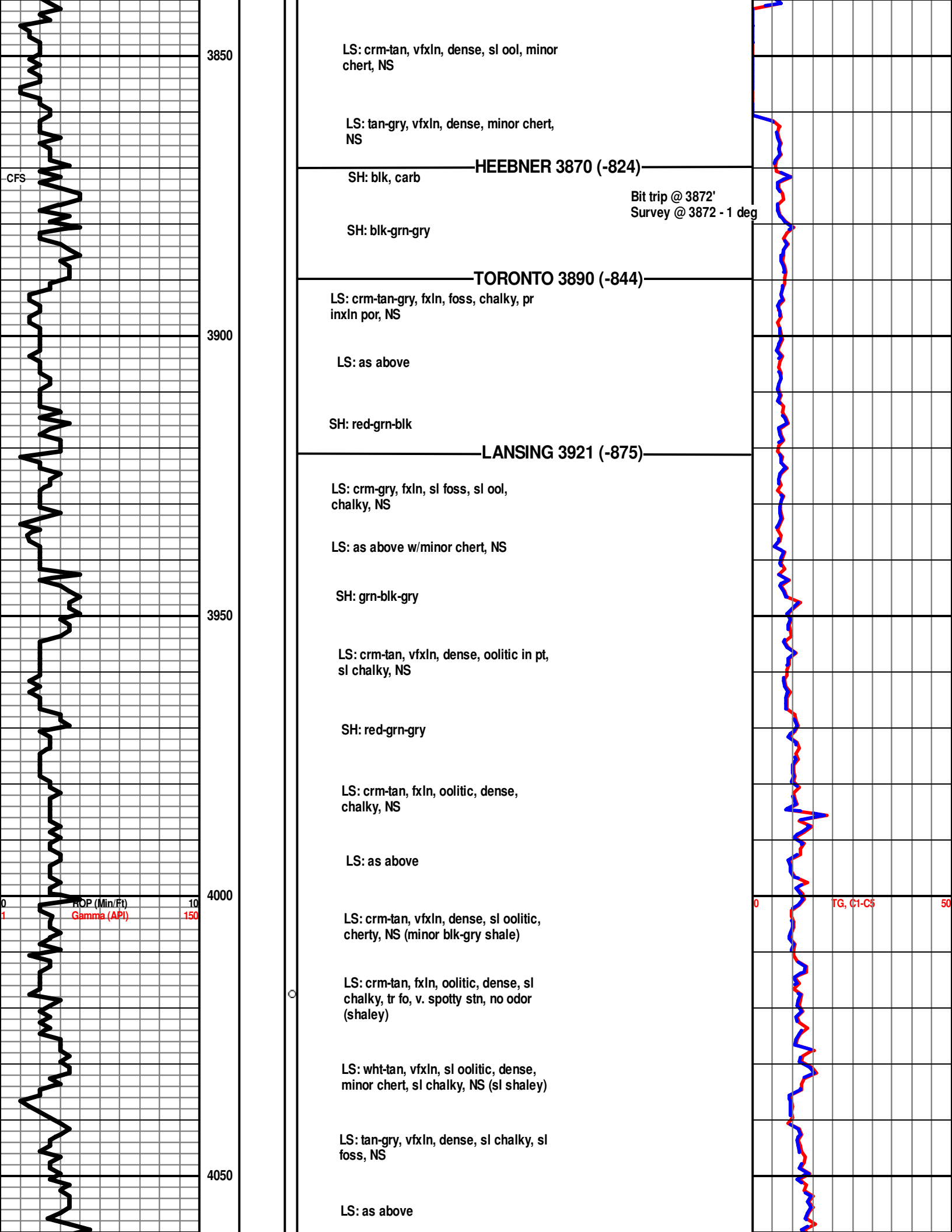
SH: blk, carb

LS: crm-tan, fxln, sl foss, chalky, dense, NS

LS: as above



0 100 50
TG, C1-C5



3850

LS: crm-tan, vfxln, dense, sl ool, minor chert, NS

LS: tan-gry, vfxln, dense, minor chert, NS

HEEBNER 3870 (-824)

SH: blk, carb

Bit trip @ 3872'
Survey @ 3872 - 1 deg

SH: blk-grn-gry

TORONTO 3890 (-844)

LS: crm-tan-gry, fxln, foss, chalky, pr inxln por, NS

LS: as above

SH: red-grn-blk

LANSING 3921 (-875)

LS: crm-gry, fxln, sl foss, sl ool, chalky, NS

LS: as above w/minor chert, NS

SH: grn-blk-gry

LS: crm-tan, vfxln, dense, oolitic in pt, sl chalky, NS

SH: red-grn-gry

LS: crm-tan, fxln, oolitic, dense, chalky, NS

LS: as above

4000

ROP (Min/Ft)
Gamma (API)

LS: crm-tan, vfxln, dense, sl oolitic, cherty, NS (minor blk-gry shale)

LS: crm-tan, fxln, oolitic, dense, sl chalky, tr fo, v. spotty stn, no odor (shaley)

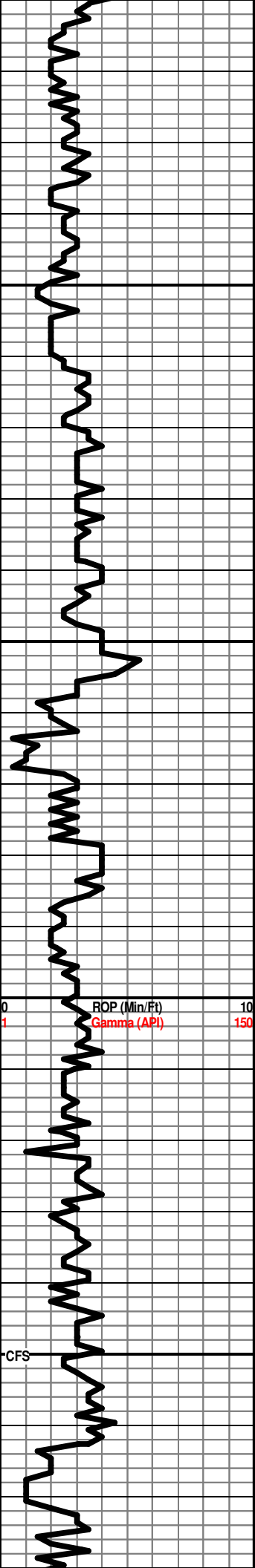
LS: wht-tan, vfxln, sl oolitic, dense, minor chert, sl chalky, NS (sl shaley)

LS: tan-gry, vfxln, dense, sl chalky, sl foss, NS

4050

LS: as above

TG, C1-C5



LS: as above

MUNCIE CREEK
4086 (-1040)

SH: blk, carb

SH: brn-gry-blk

4100

LS: crm-brn-gry, vfxln, dense, sl foss, mottled in pt, NS

LS: as above

SH: red-blk-gry

LS: crm-brn-gry, vfxln, dense, sl chalky, NS

Test Gas Detector

LS: as above w/abund blk-gry-grn shale

4150

LS: crm-tan-brn, vfxln, dense, chalky, NS w/abund grn-brn shale

LS: as above

STARK 4164 (-1118)

SH: blk, carb

LS: crm-brn-gry, vfxln, dense, foss, chalky, shaley, NS

LS: crm-brn-gry, vfxln, dense, oolitic, chalky, NS

4200

SH: blk-grn-gry

LS: wht-tan-gry, vfxln, dense, oolitic in pt, sl foss, chalky, NS

LS: crm-gry, vfxln, dense, pr ppt por, tr fo on brk, spotty dead stn, sl odor

BKC 4240 (-1194)

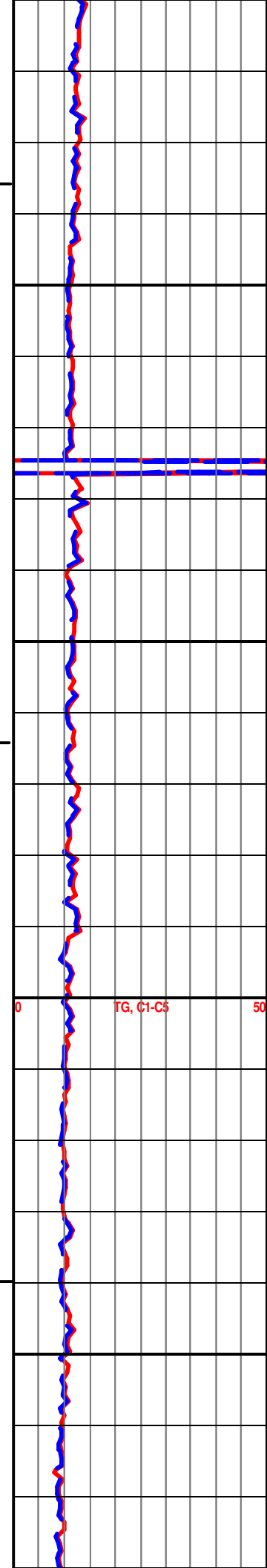
SH: gry-blk

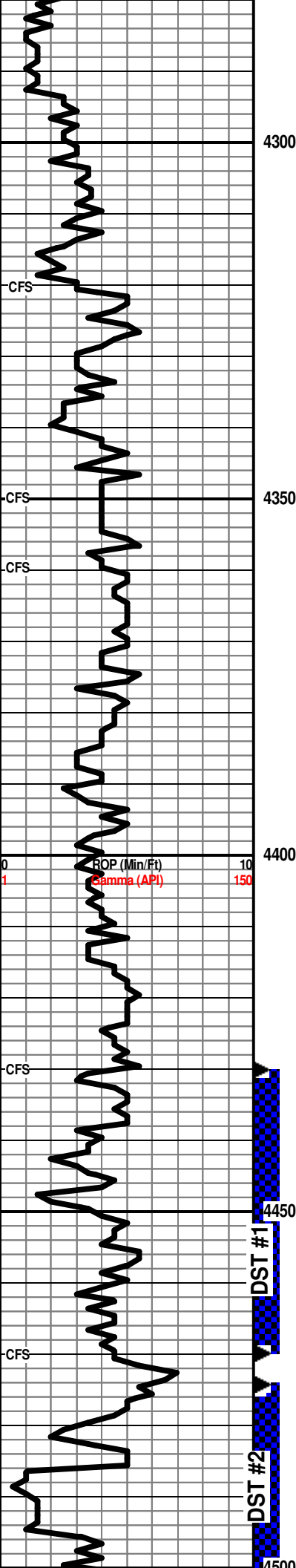
4250

LS: tan-gry, vfxln, dense, sl foss, sl chalky, minor chert, NS

LS: as above w/abund gry-blk-grn shale

Sst/Siltst: orn-arg-brn. vfa. tite w/abund





shale as above

MARMATON 4293 (-1247)

LS: crm-tan, f-vfxln, dense, minor ppt por, tr fo, spotty dead stn, no odor

ALTAMONT 4314 (-1268)

LS: crm-brn, fxln, oolitic in pt, mostly sucros text, chalky, fr ppt por, NS

SH: gry-grn-brn

LS: crm-brn-gry, fxln, dense, sl oolitic, chalky, NS

SH: gry-grn

LS: crm-tan, vfxln, dense, oolitic, chalky, NS

LS: as above

LS: crm-brn-gry, vfxln, dense, sl foss, chalky, NS

PAWNEE 4390 (-1344)

SH: blk, carb

LS: tan-gry, vfxln, dense, chalky, NS

LS: as above

LS: as above w/abund multic. fresh chert (incr in blk shale in circ sample)

LS: crm-brn, vfxln, dense, abund chert as above, NS

MYRICK STA 4433 (-1387)

LS: crm-brn-gry, vfxln, dense, foss, cherty, NS

FT SCOTT 4450 (-1404)

LS: wht-brn-gry, fxln, oolitic in pt, foss, abund chert, sl chalky, ssfo on brk, spotty live stn, sl odor

Short trip 20 stands before test

DST #1 4430-4470

(Myrick Sta & Ft Scott)

15:15:15:15

IF: Wk blow died in 6 min, NR

FF: NB, NR

Recovery: 1' Mud

IHP: 2098 FHP: 2099

IFP: 7-7 ISIP: 25

FFP: 7-8 FSIP: 20

BHT - 111 F

CHEROKEE 4479 (-1433)

SH: blk, carb

LS: wht-brn-gry, fxln, oolitic, fr inter-ool por, fsfo on brk, spotty live stn, fr odor

DST #2 4474-4510 (Cherokee Lm)

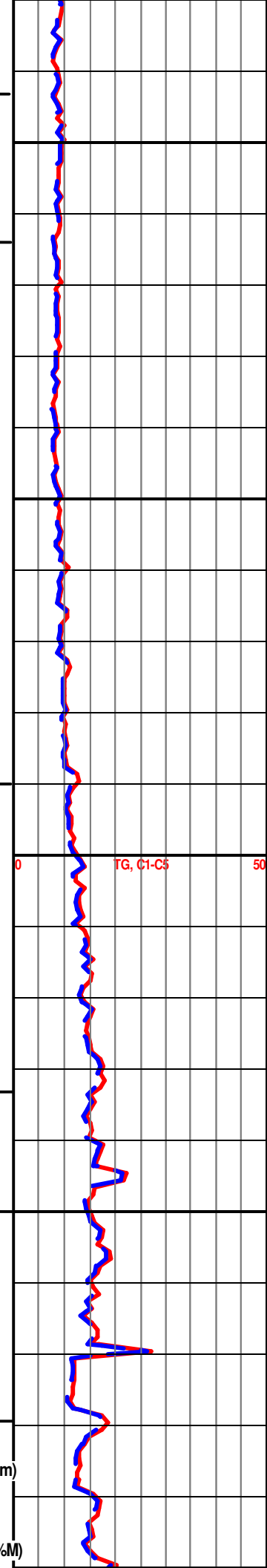
30:45:45:60

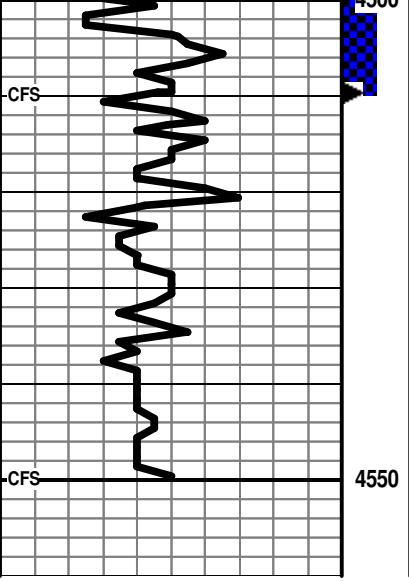
IF: Built to 3-1/2", NR

FF: Built to 3-1/2", NR

Recovery: 90' WCM (25%W, 75%M)

IHP: 2162 FHP: 2067





SH: blk, carb

IFP: 2163 FFP: 2067
 IFP: 8-30 ISIP: 1188
 FFP: 34-59 FSIP: 1141
 BHT - 116 F
 Chlorides - 29,000 ppm

LS & SH: as above

JOHNSON 4521 (-1475)

LS: crm-brn, vfxln, dense, sl foss, pelletal in pt, NS

LS: as above, cherty (1 pc w/minor strn, tite, no odor)

LS: crm-brn-gry, vfxln, dense, cherty, NS

