



Pioneer Energy Services

Dual Induction Log

API No.	15-109-21203-00-00		
Company	New Gulf Operating, LLC		
Well	CCP #1-28		
Field	Wildcat		
County	Logan	State	Kansas
Location	E2 SE SW SW 4950' FNL / 1220' FWL		
Sec: 28	Twp: 14S	Rge: 34W	Other Services CNL / CDL MEL

Permanent Datum	Ground Level	Elevation 3037	K.B. 3046
Log Measured From	Kelly Bushing	9 Ft. Above Perm. Datum	D.F. 3037
Drilling Measured From	Kelly Bushing		G.L. 3037
Date	9/27/2013		
Run Number	One		
Depth Driller	4720		
Depth Logger	4720		
Bottom Logged Interval	4719		
Top Log Interval	250		
Casing Driller	8.625 @ 264		
Casing Logger	260		
Bit Size	7.875		
Type Fluid in Hole	Chemical		
Salinity, ppm CL	7500		
Density / Viscosity	9.3	47	
pH / Fluid Loss	9.0	10.4	
Source of Sample	Flowline		
Rm @ Meas. Temp	0.24	@ 82	
Rmf @ Meas. Temp	0.18	@ 82	
Rmc @ Meas. Temp	0.32	@ 82	
Source of Rmf / Rmc	Charts		
Rm @ BHT	0.16	@ 123	
Operating Rig Time	5 Hours		
Max Rec. Temp. F	123		
Equipment Number	15		
Location	Hays		
Recorded By	R. Barnhart		
Witnessed By	Steve Murphy		

<<< Fold Here >>>

All interpretations are opinions based on inferences from electrical or other measurements and we cannot and do not guarantee the accuracy or correctness of any interpretation, and we shall not, except in the case of gross or willful negligence on our part, be liable or responsible for any loss, costs, damages, or expenses incurred or sustained by anyone resulting from any interpretation made by any of our officers, agents or employees. These interpretations are also subject to our general terms and conditions set out in our current Price Schedule.

Comments

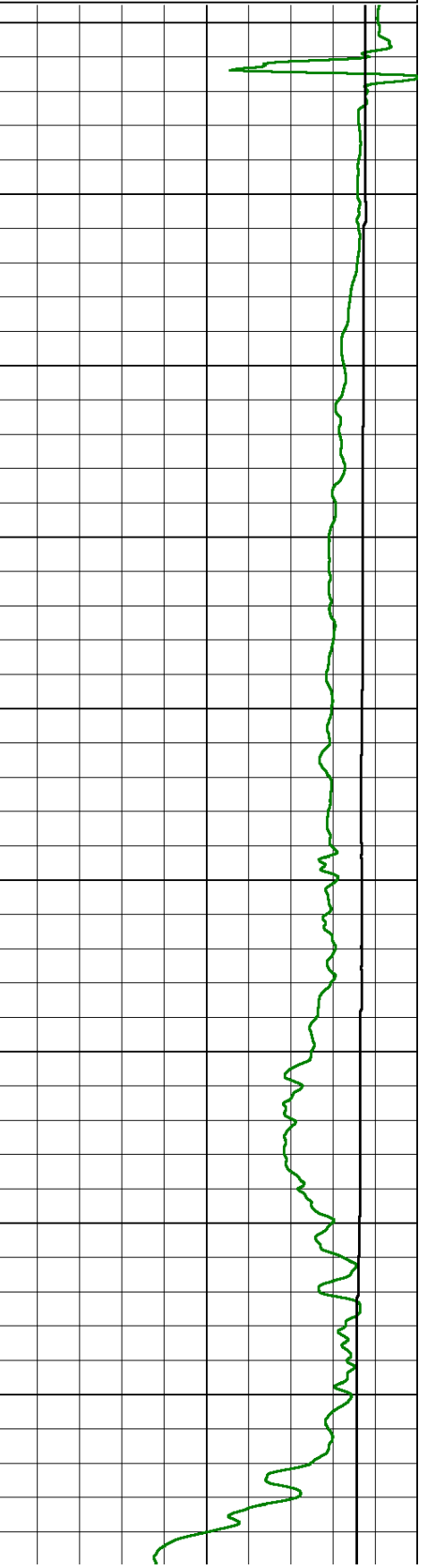
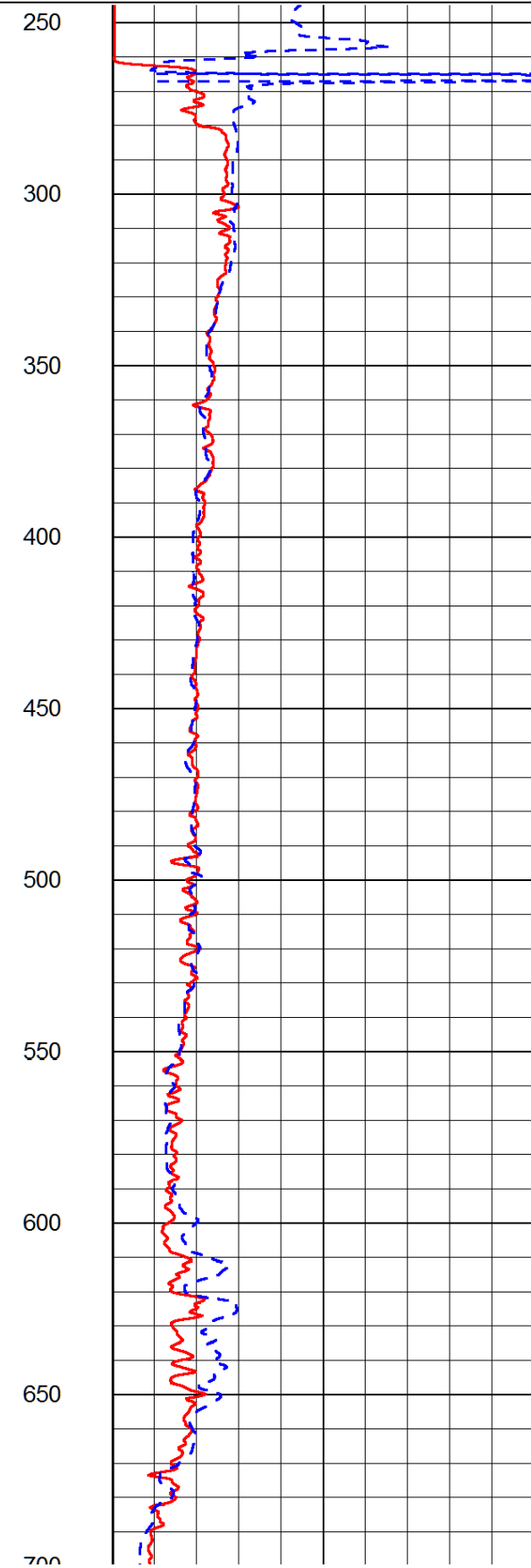
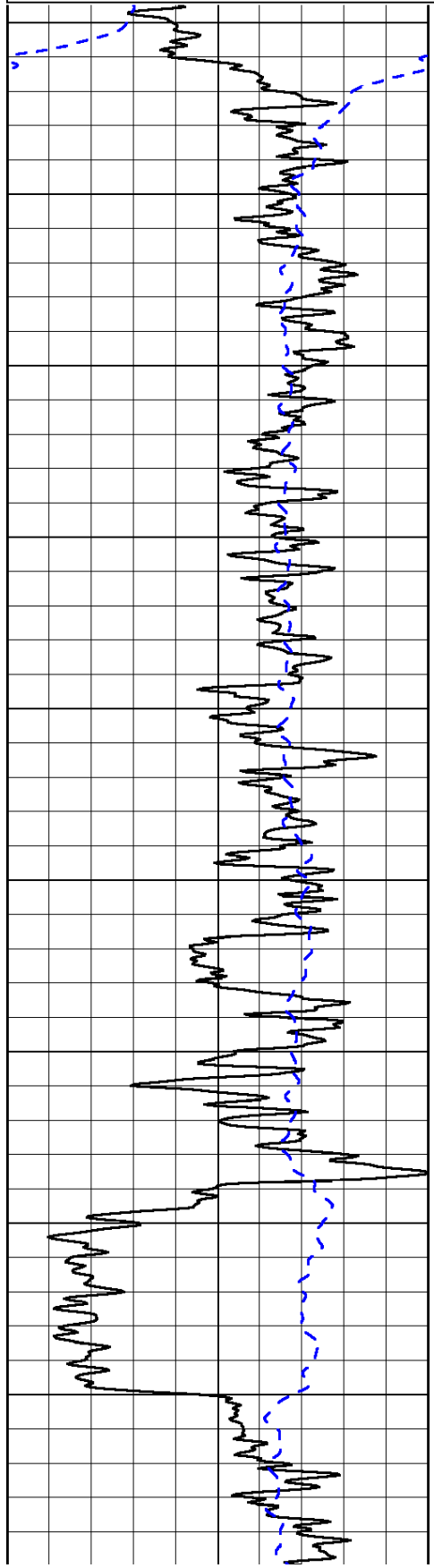
Thank you for using Log-Tech, Inc.
 (785) 625-3858

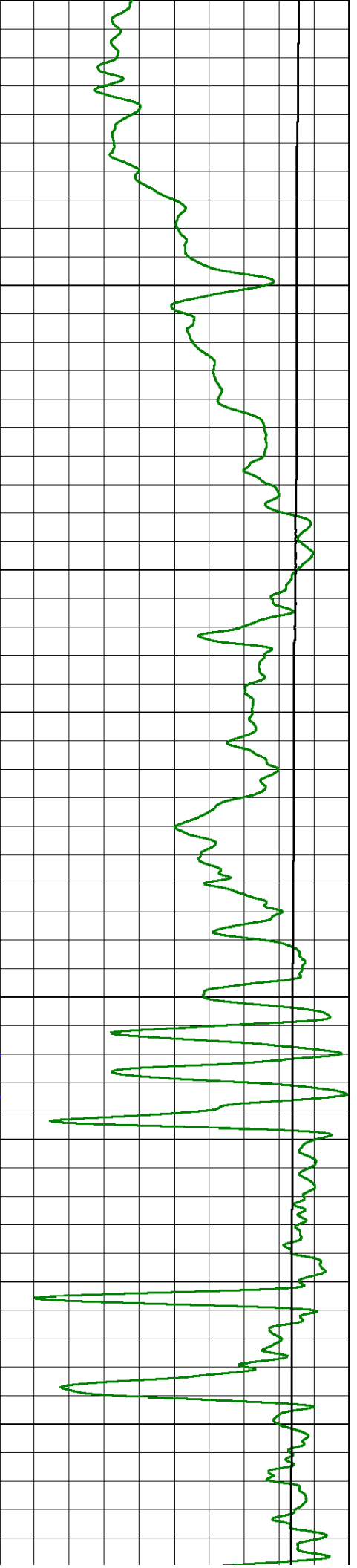
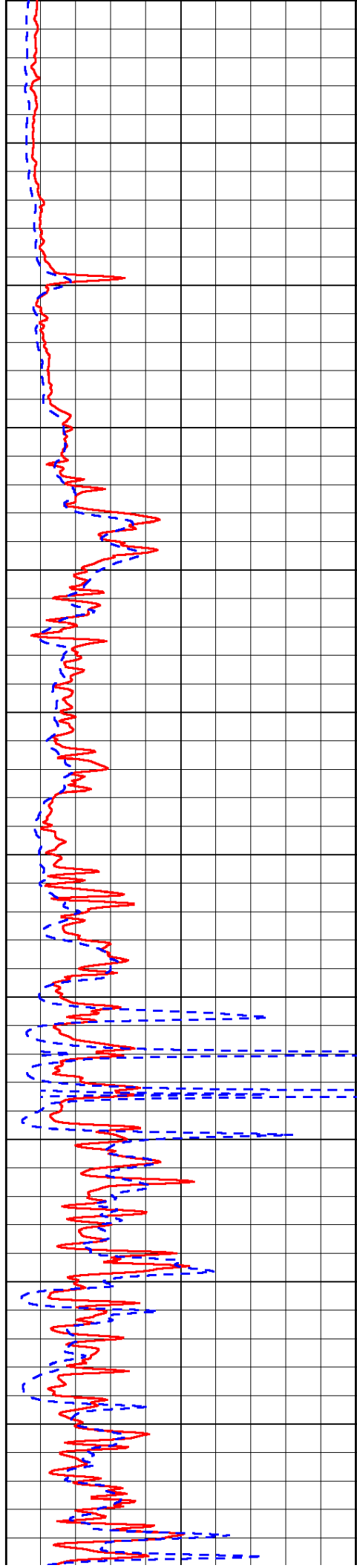
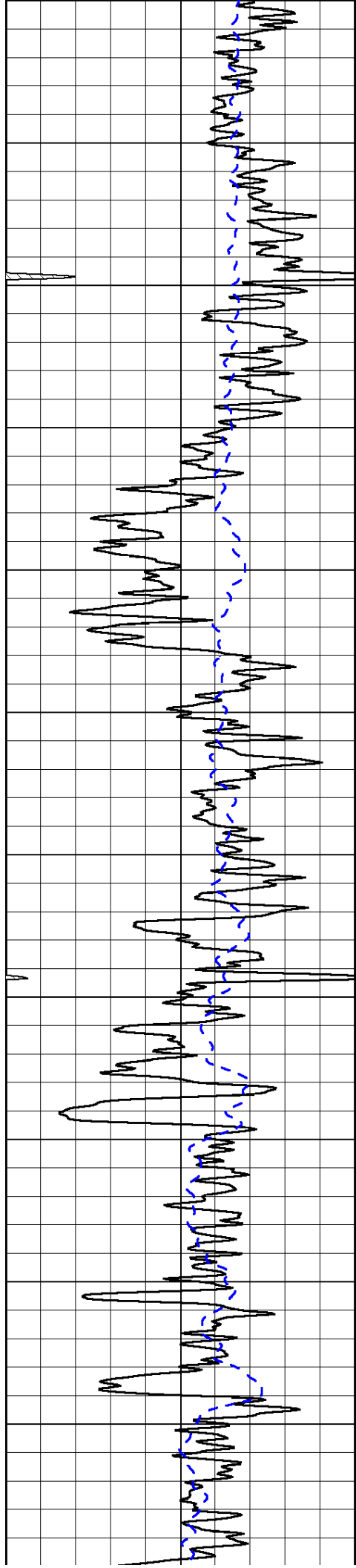
Russell Springs, KS:
 E edge to 270 Rd., 7S, 3E, S into

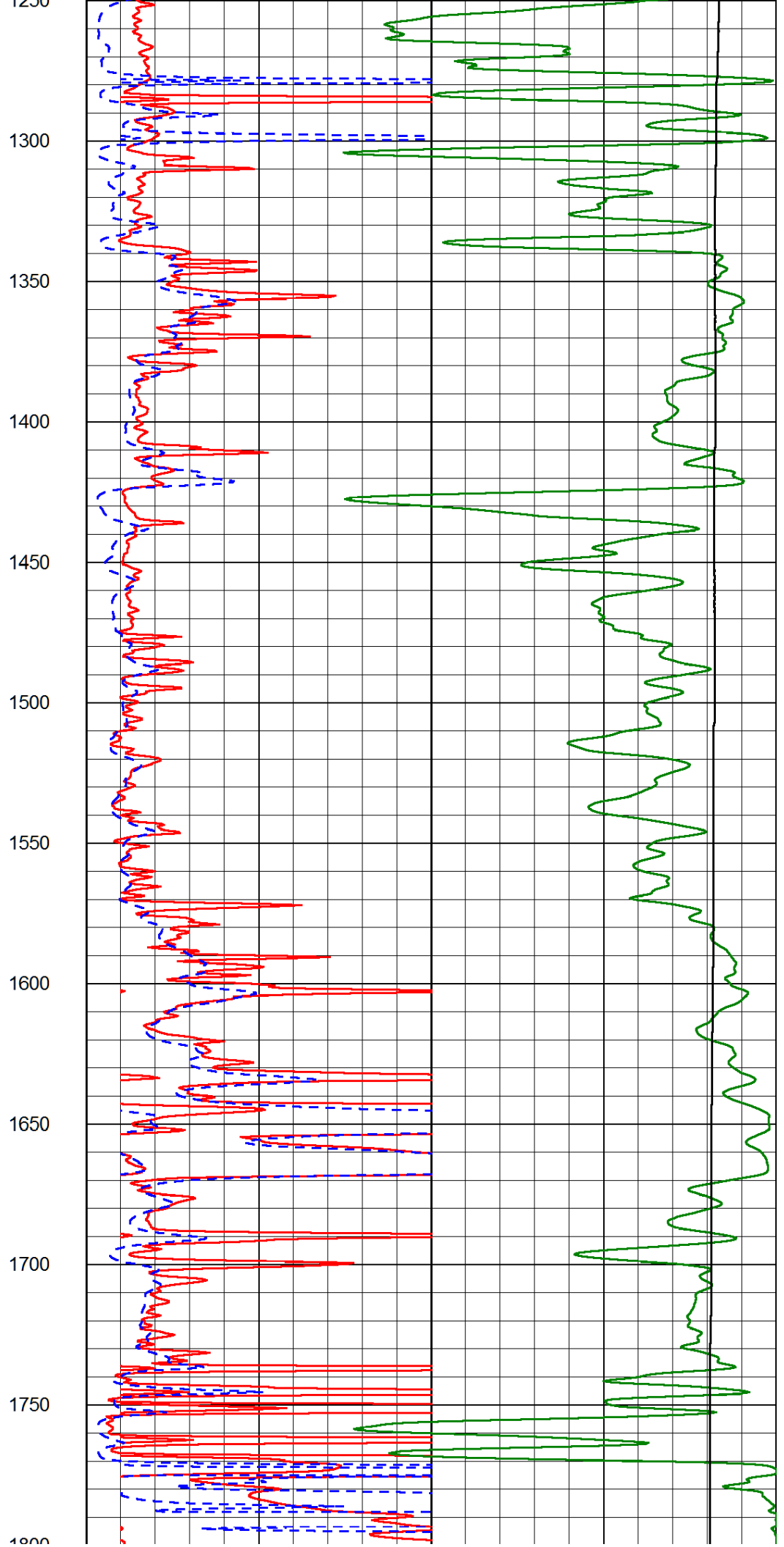
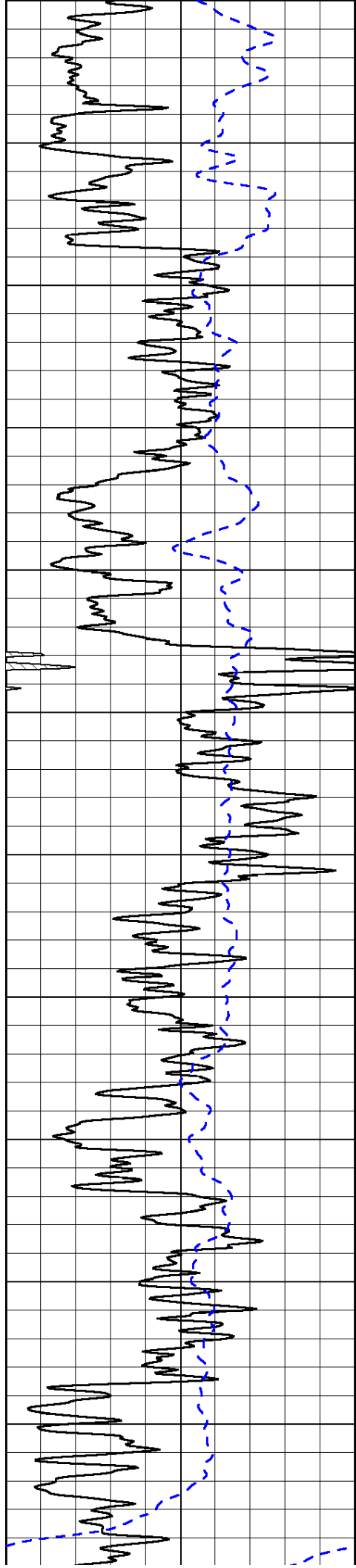
Database File: newgulf_hd.db
 Dataset Pathname: dil/ngmain
 Presentation Format: dil2in
 Dataset Creation: Fri Sep 27 12:38:01 2013
 Charted by: Depth in Feet scaled 1:600

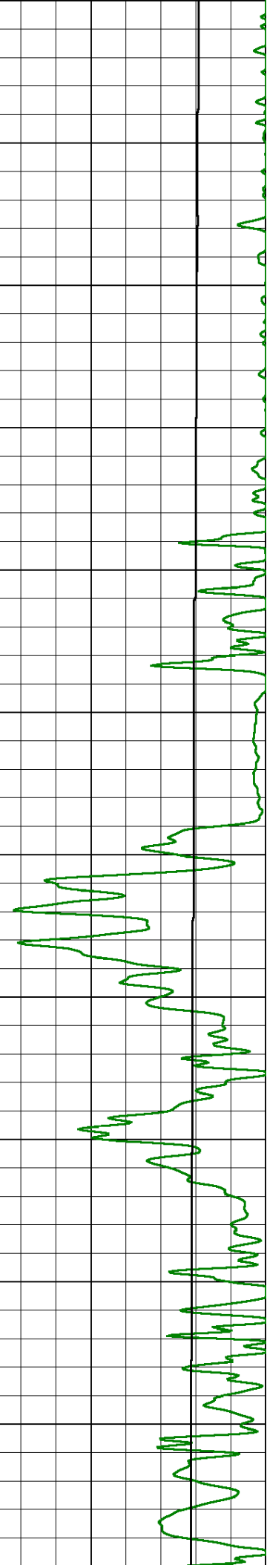
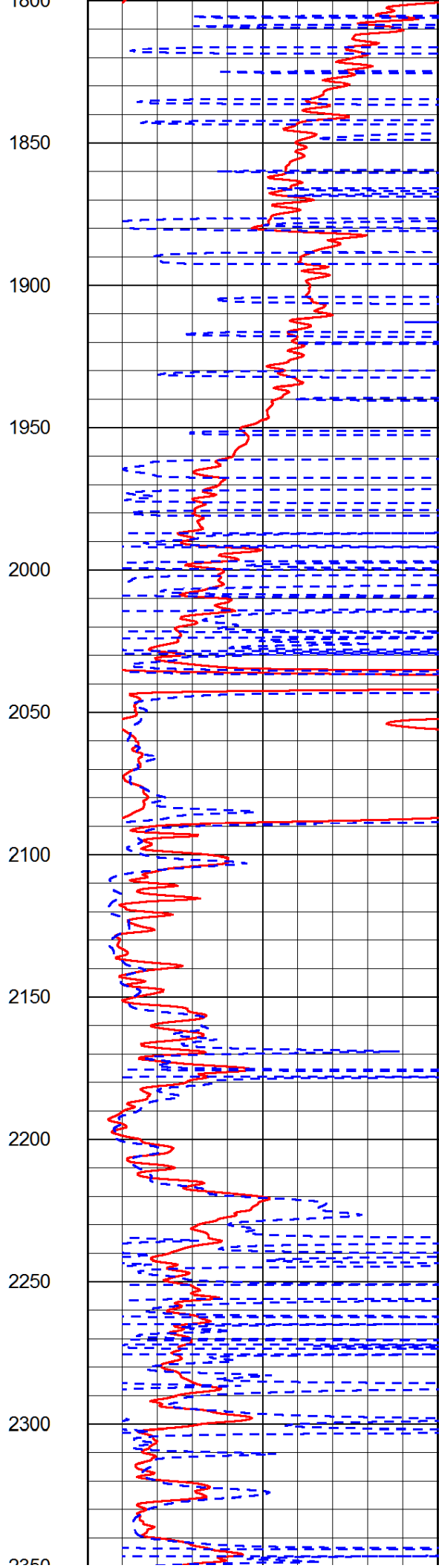
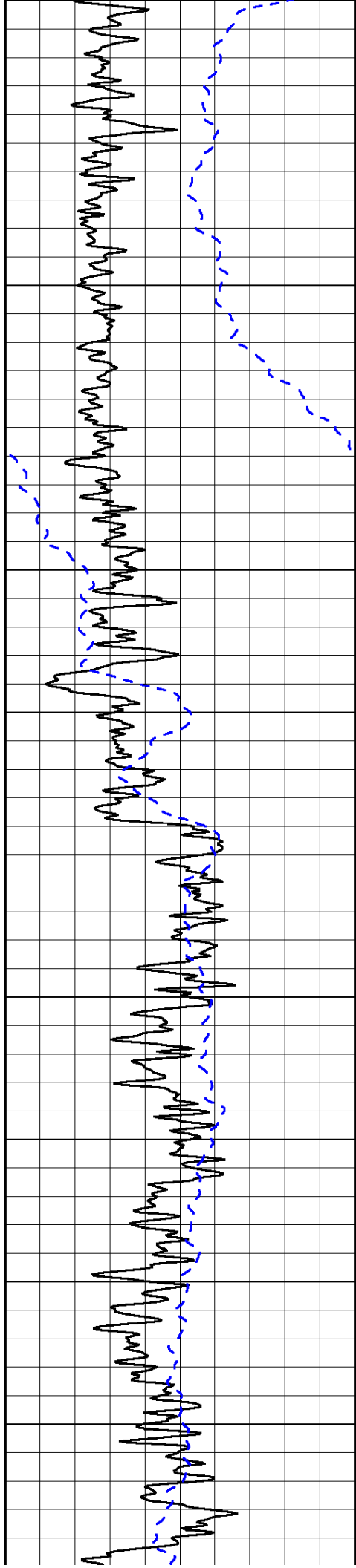
0	Gamma Ray (GAPI)	150
-200	SP (mV)	0

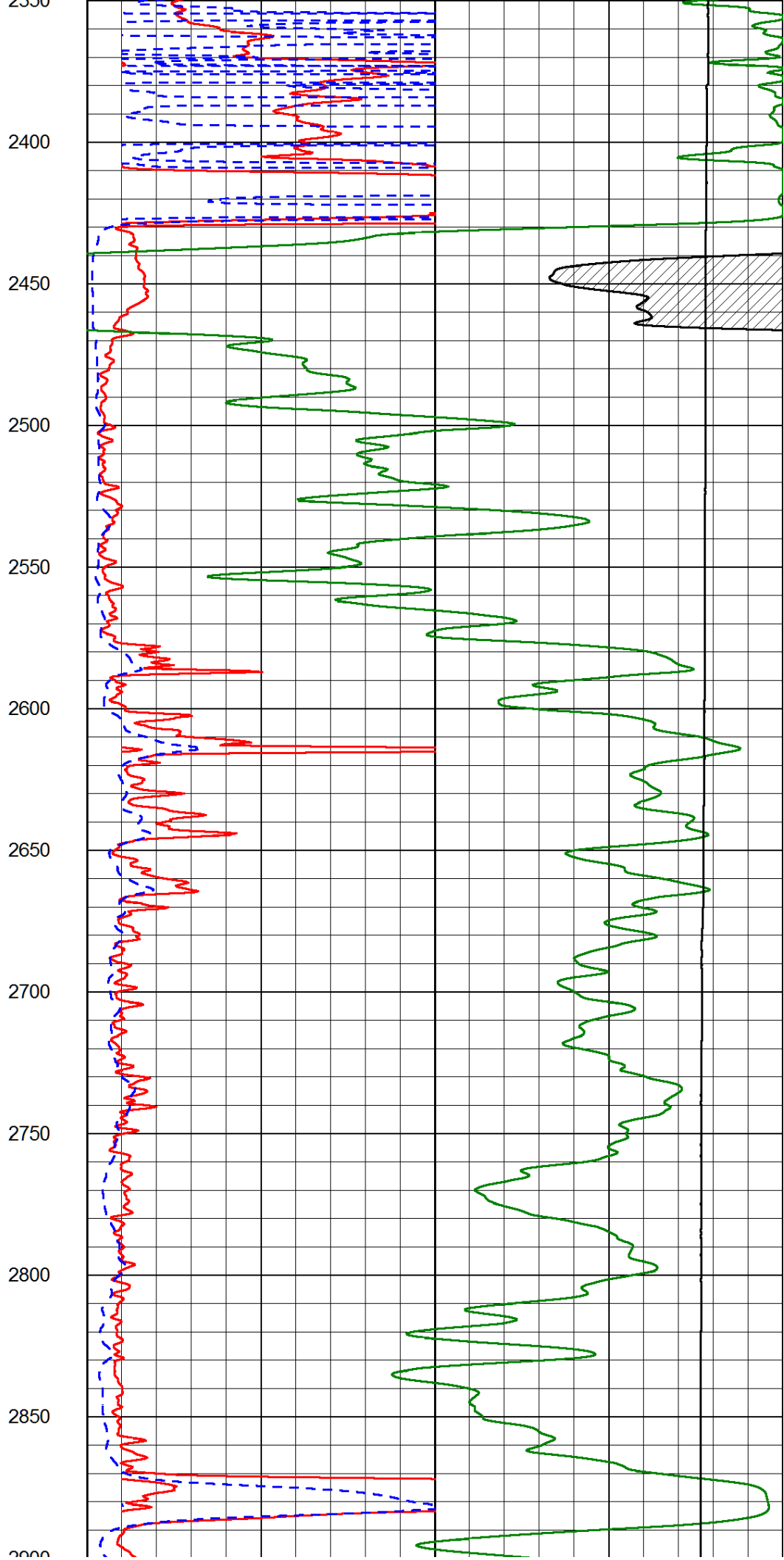
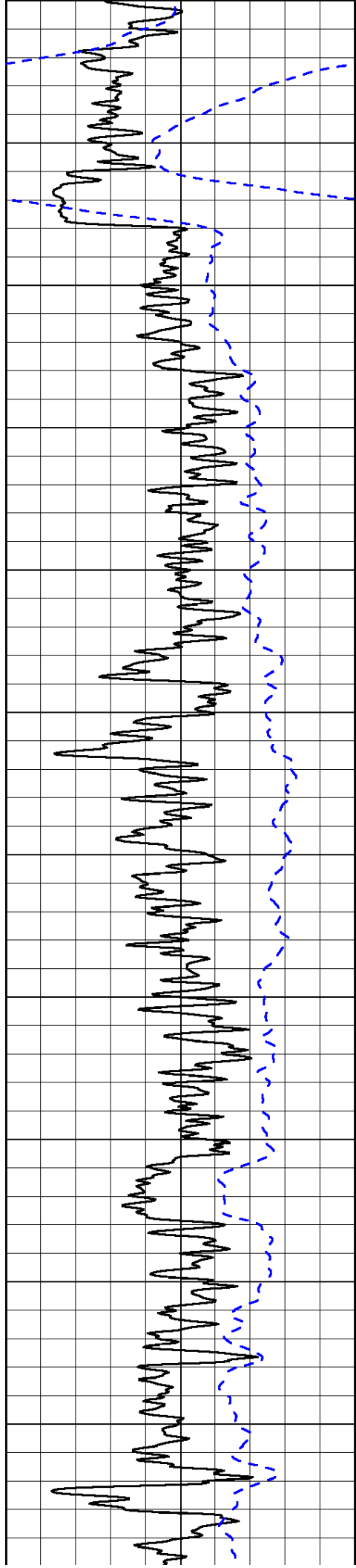
0	Shallow Resistivity (Ohm-m)	50
0	Deep Resistivity (Ohm-m)	50
1000	Conductivity (Ohm-m)	0
15000	Line Tension (lb)	0
50	Shallow Resistivity (Ohm-m)	500
50	Deep Resistivity (Ohm-m)	500

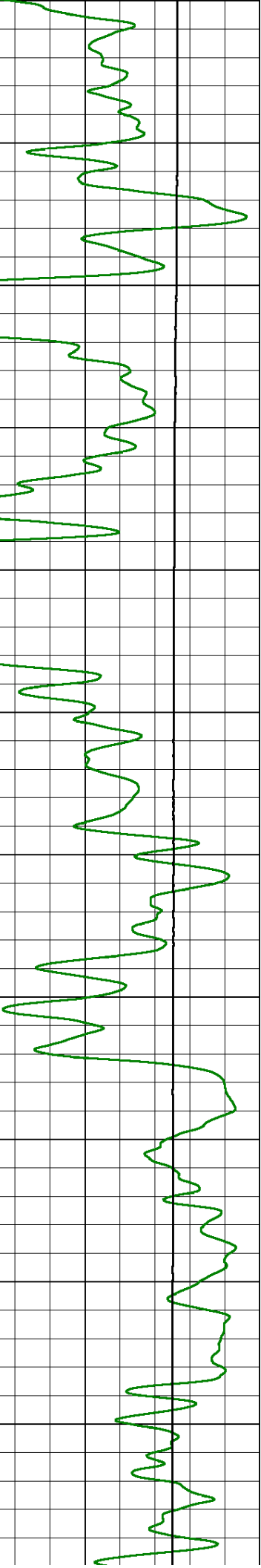
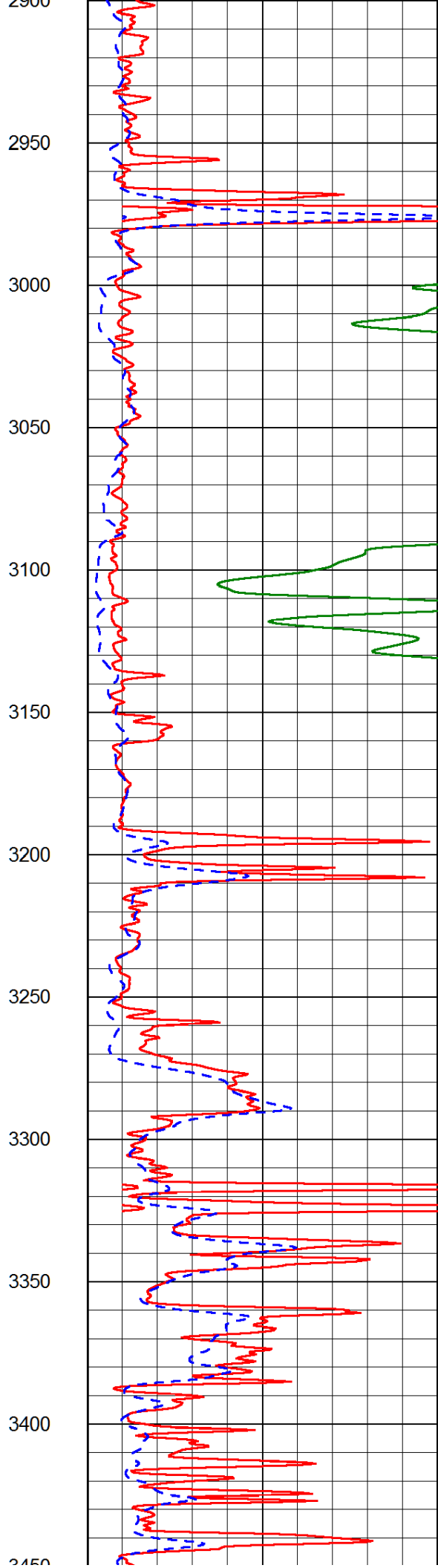
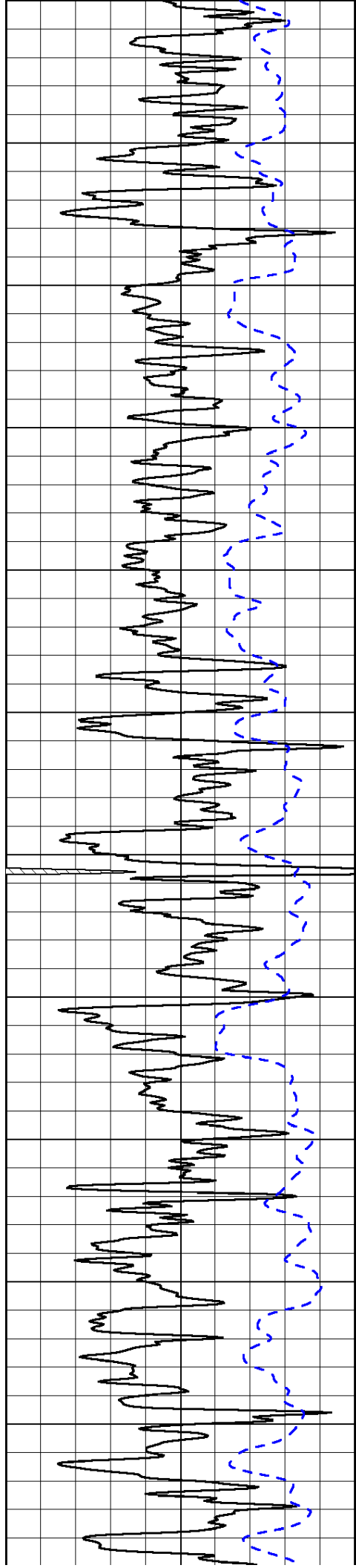


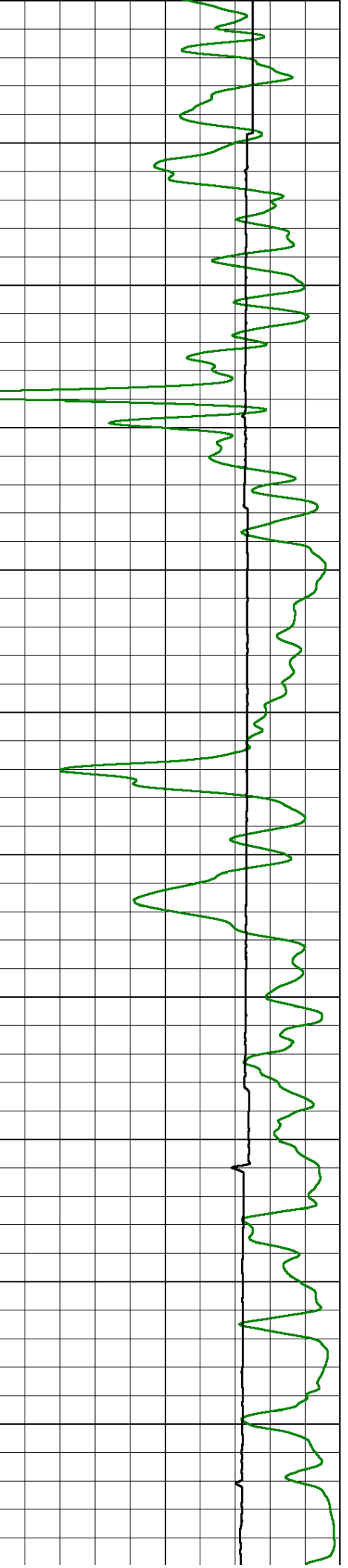
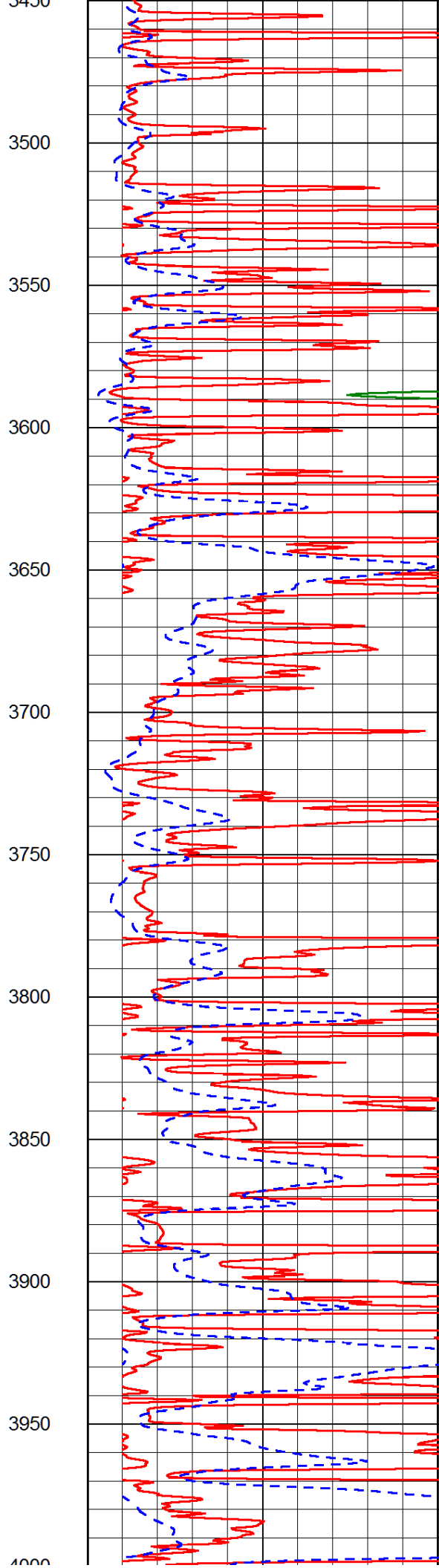
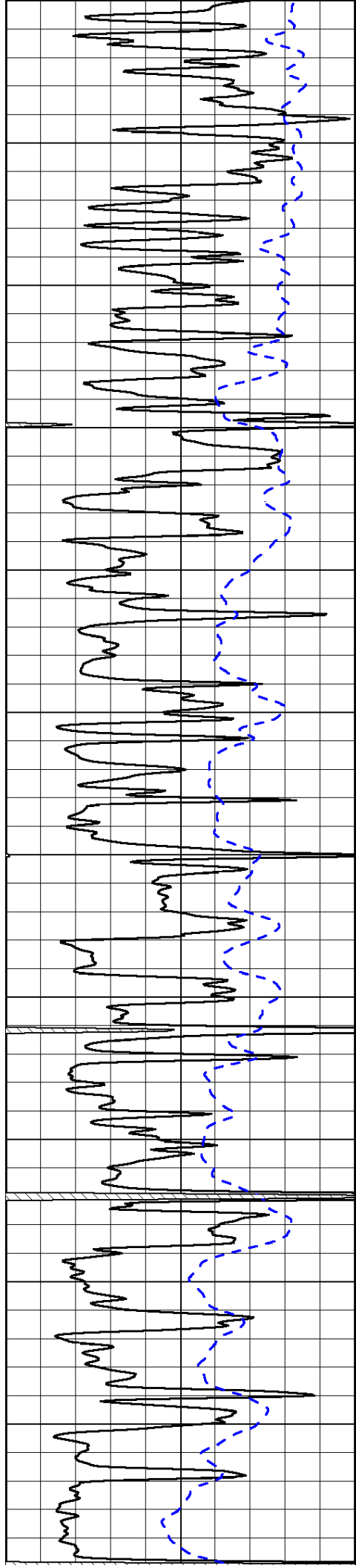


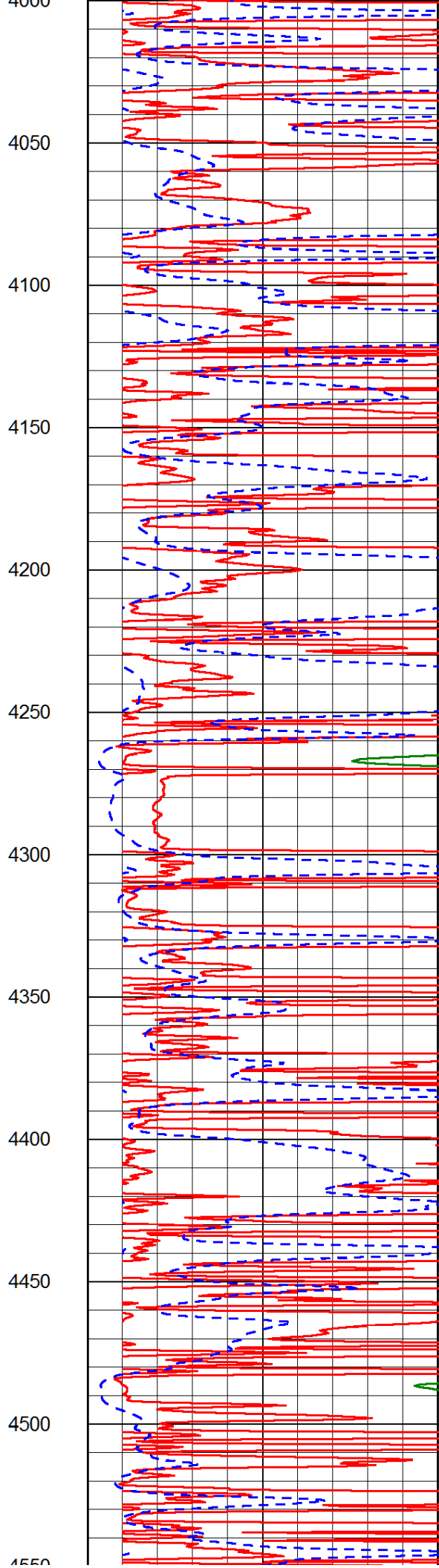
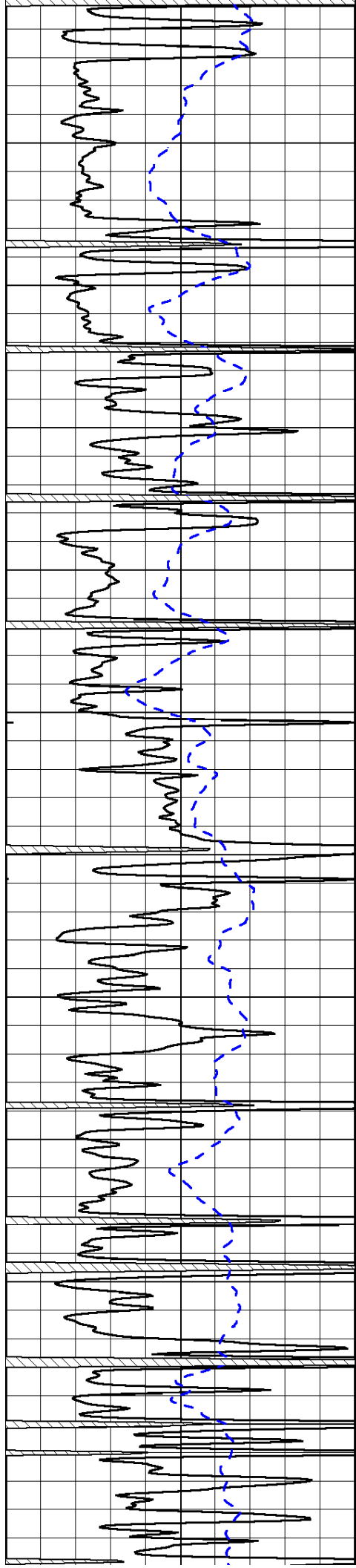


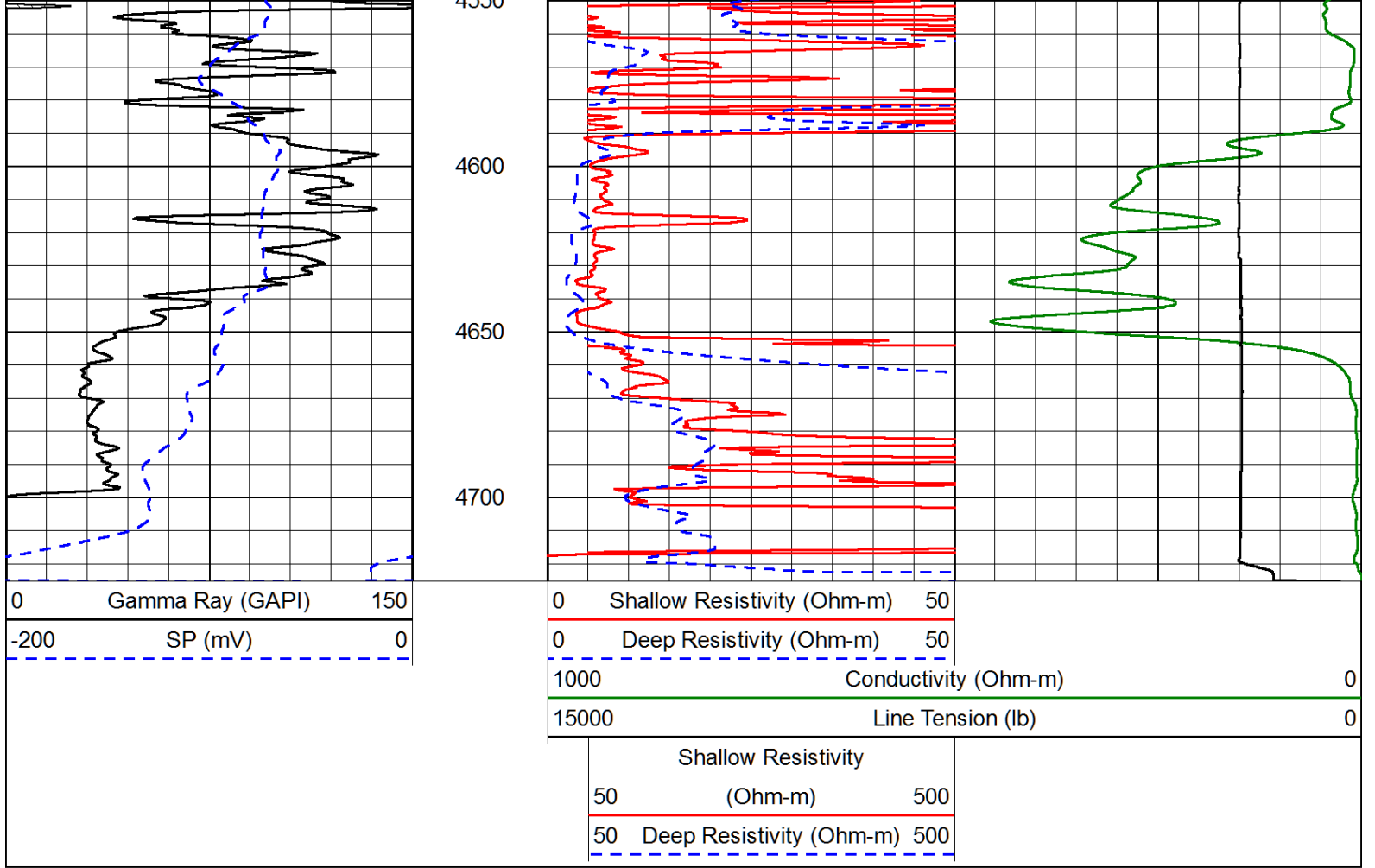




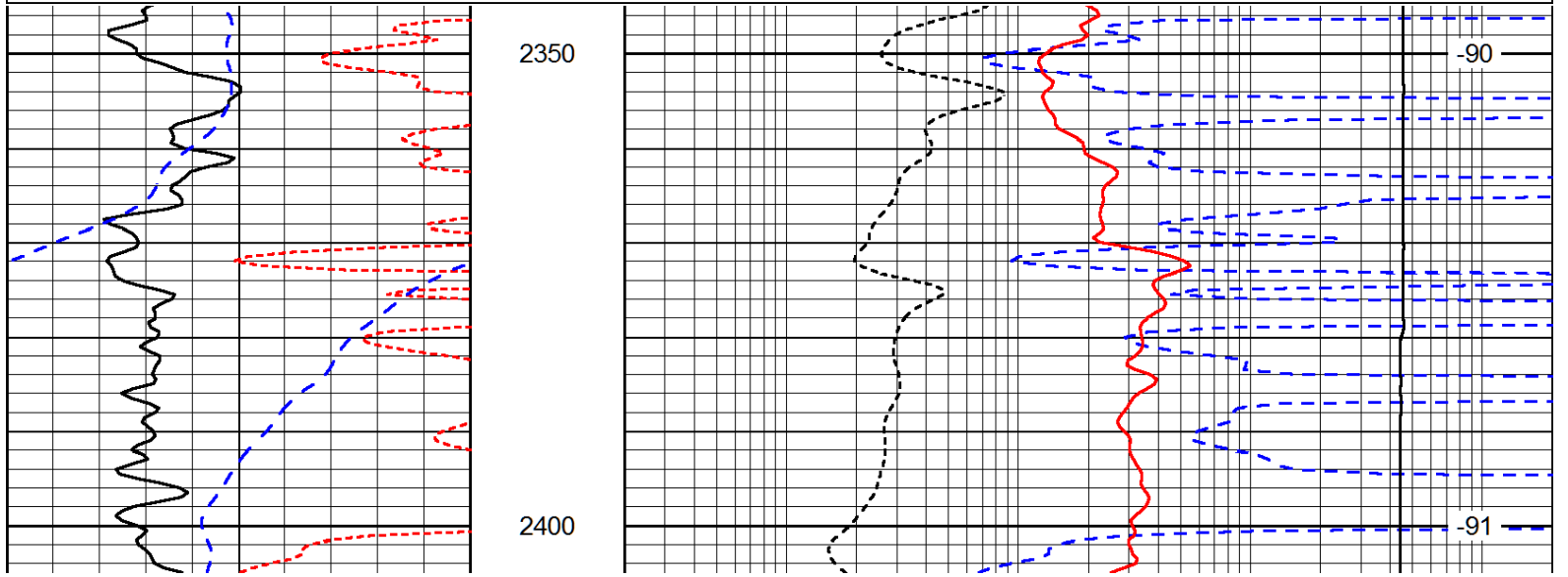
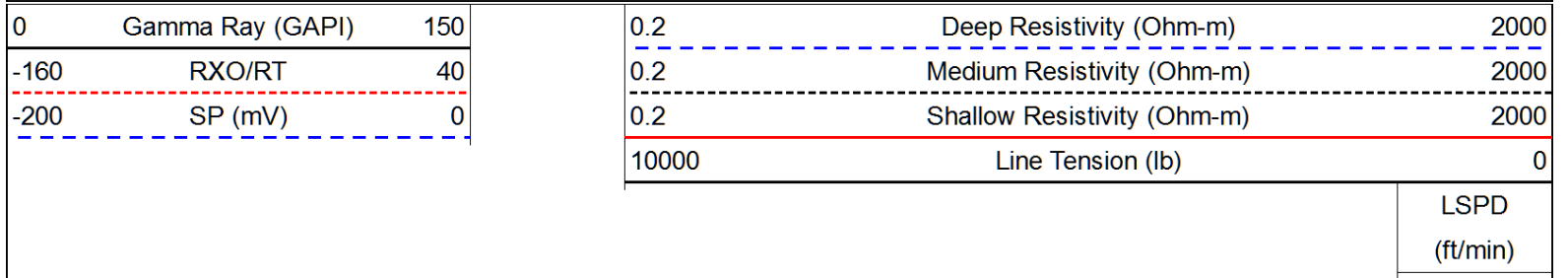


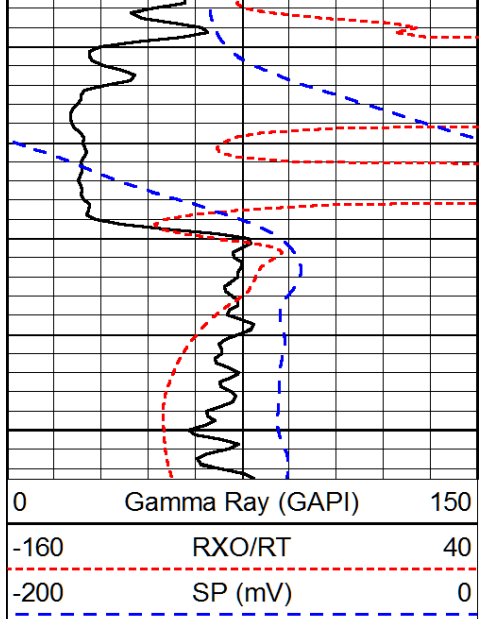




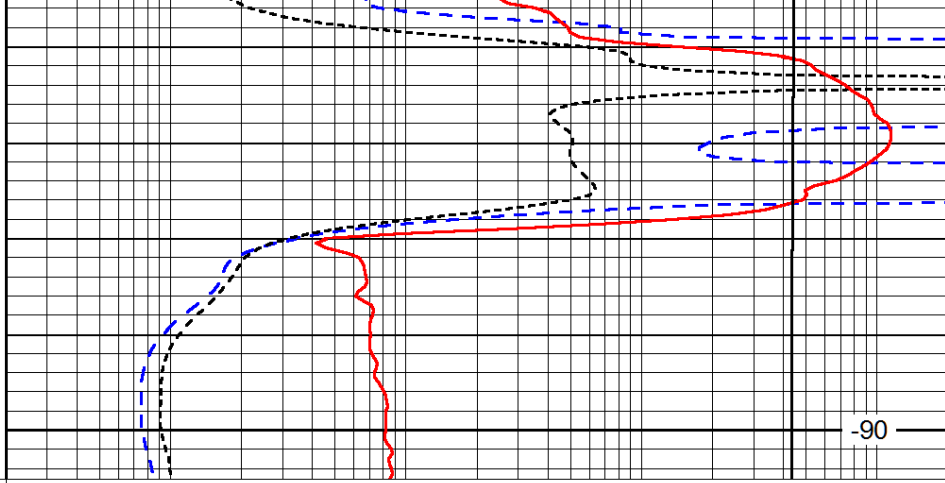


Database File: newgulf_hd.db
 Dataset Pathname: dil/ngmain
 Presentation Format: dil
 Dataset Creation: Fri Sep 27 12:38:01 2013
 Charted by: Depth in Feet scaled 1:240





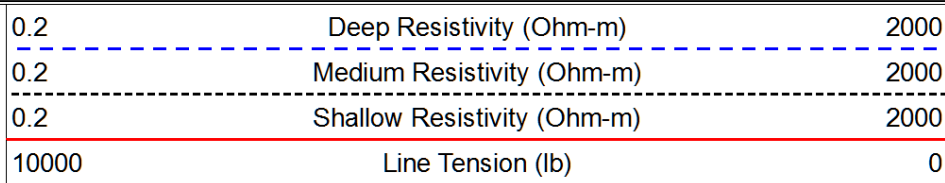
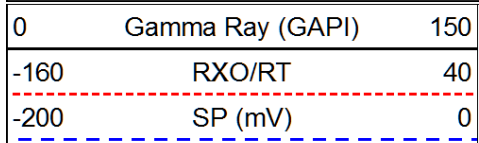
2450



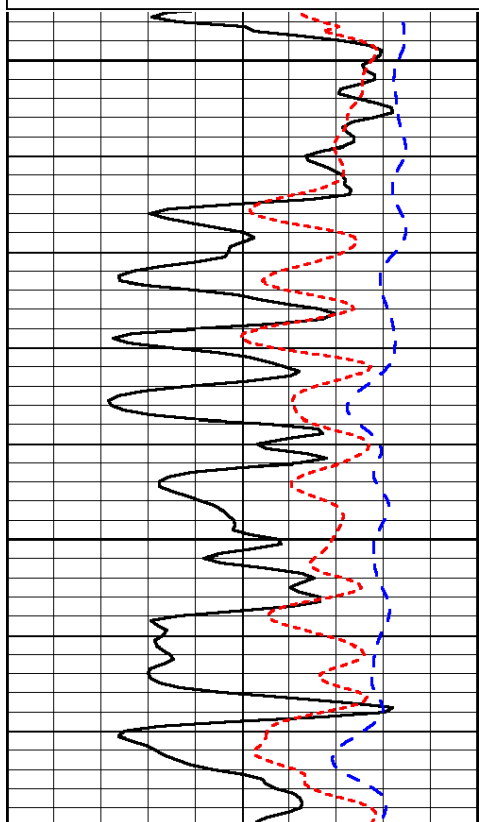
-90

LSPD
(ft/min)

Database File: newgulf_hd.db
 Dataset Pathname: dil/ngmain
 Presentation Format: dil
 Dataset Creation: Fri Sep 27 12:38:01 2013
 Charted by: Depth in Feet scaled 1:240

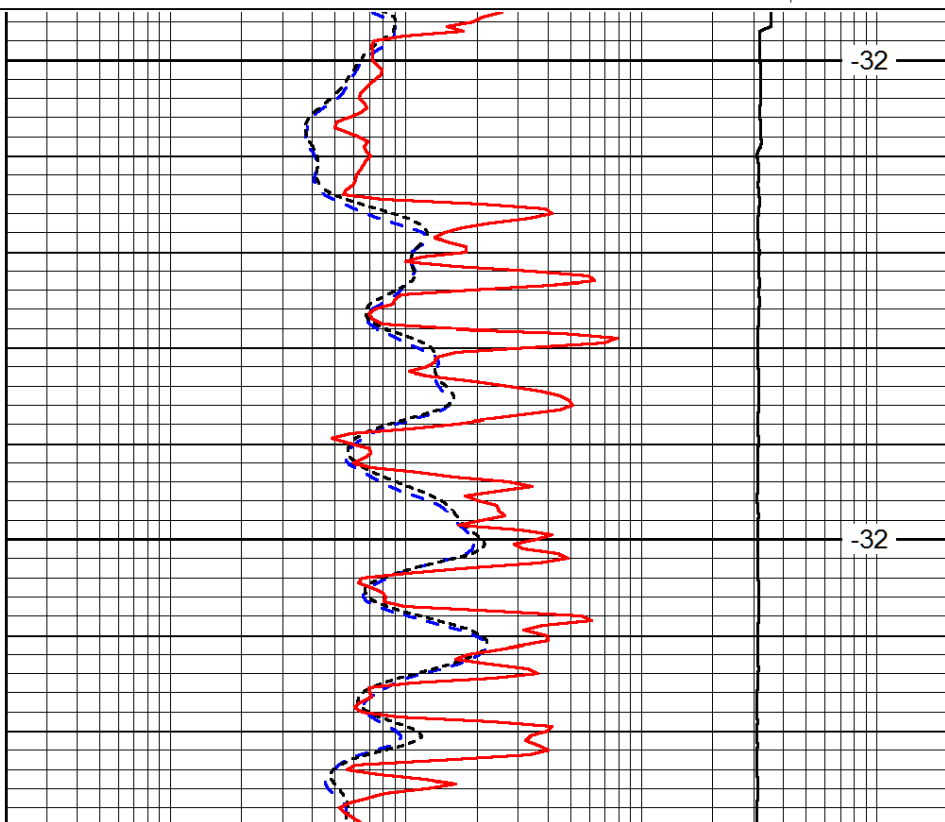


LSPD
(ft/min)



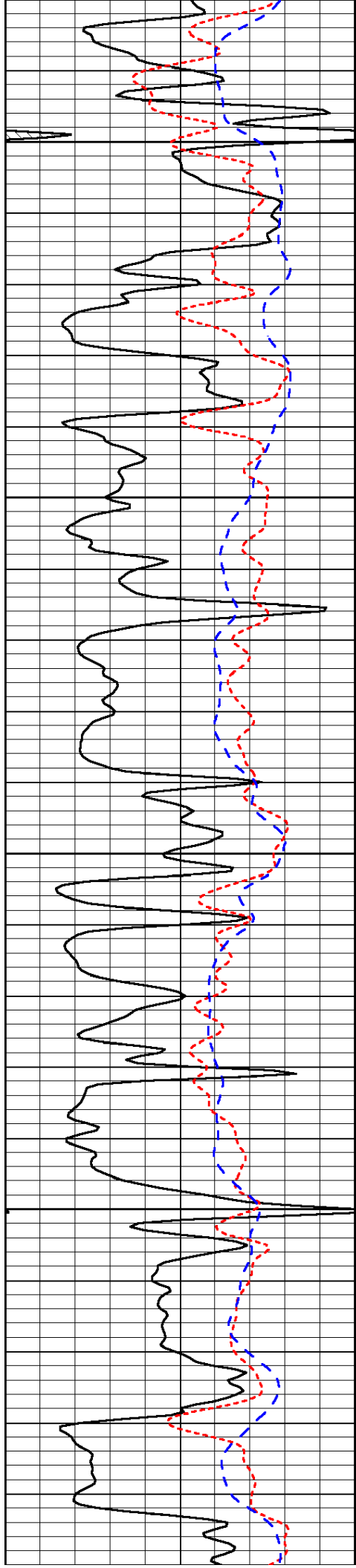
3500

3550



-32

-32



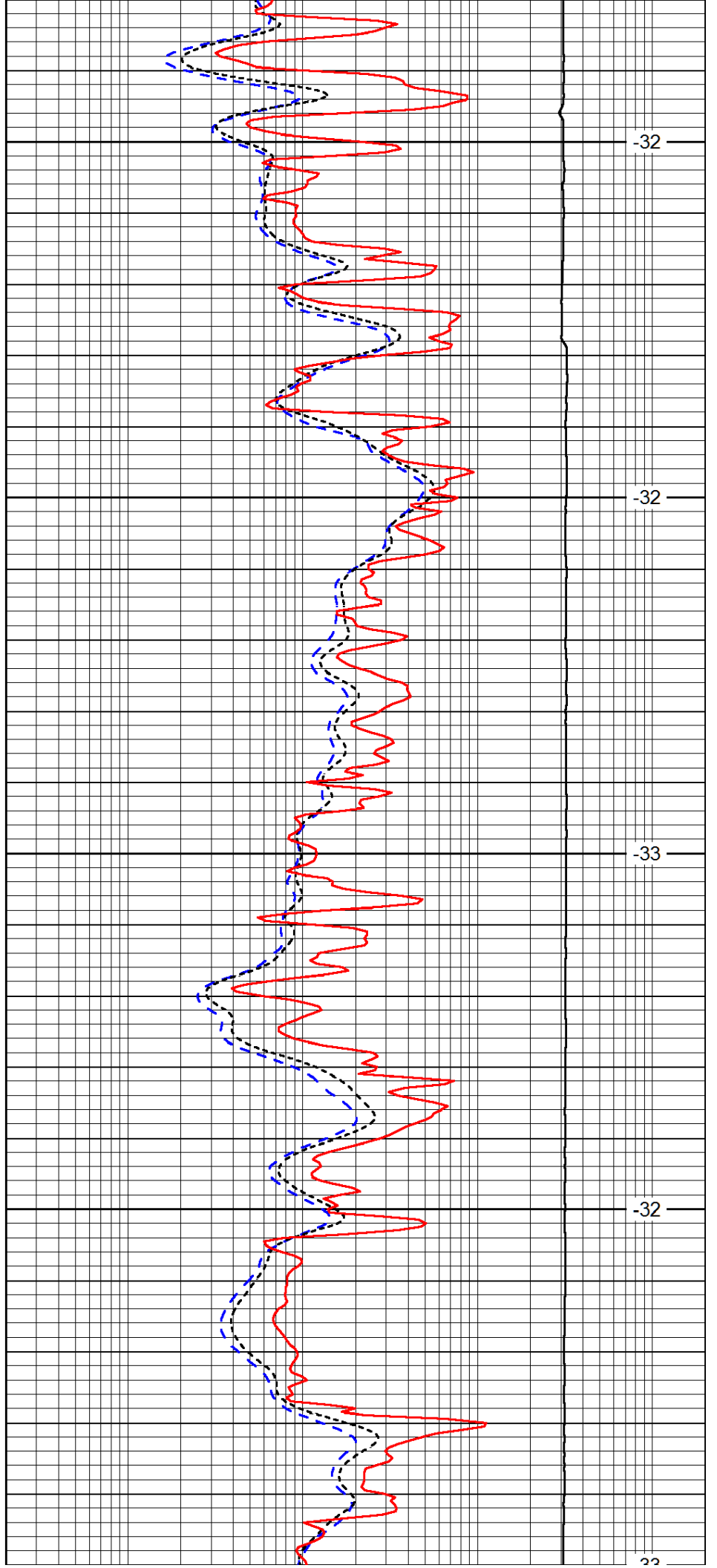
3600

3650

3700

3750

3800



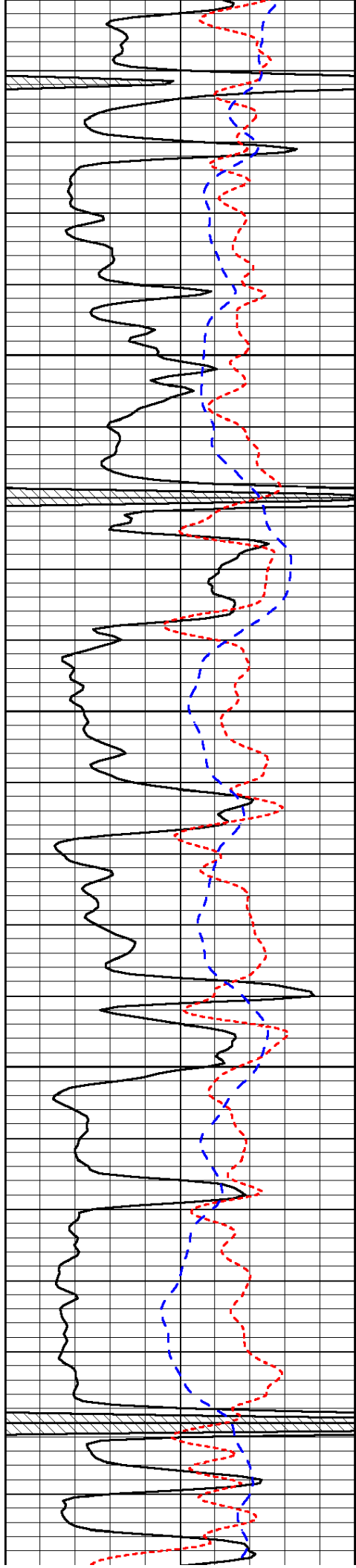
-32

-32

-33

-32

-32



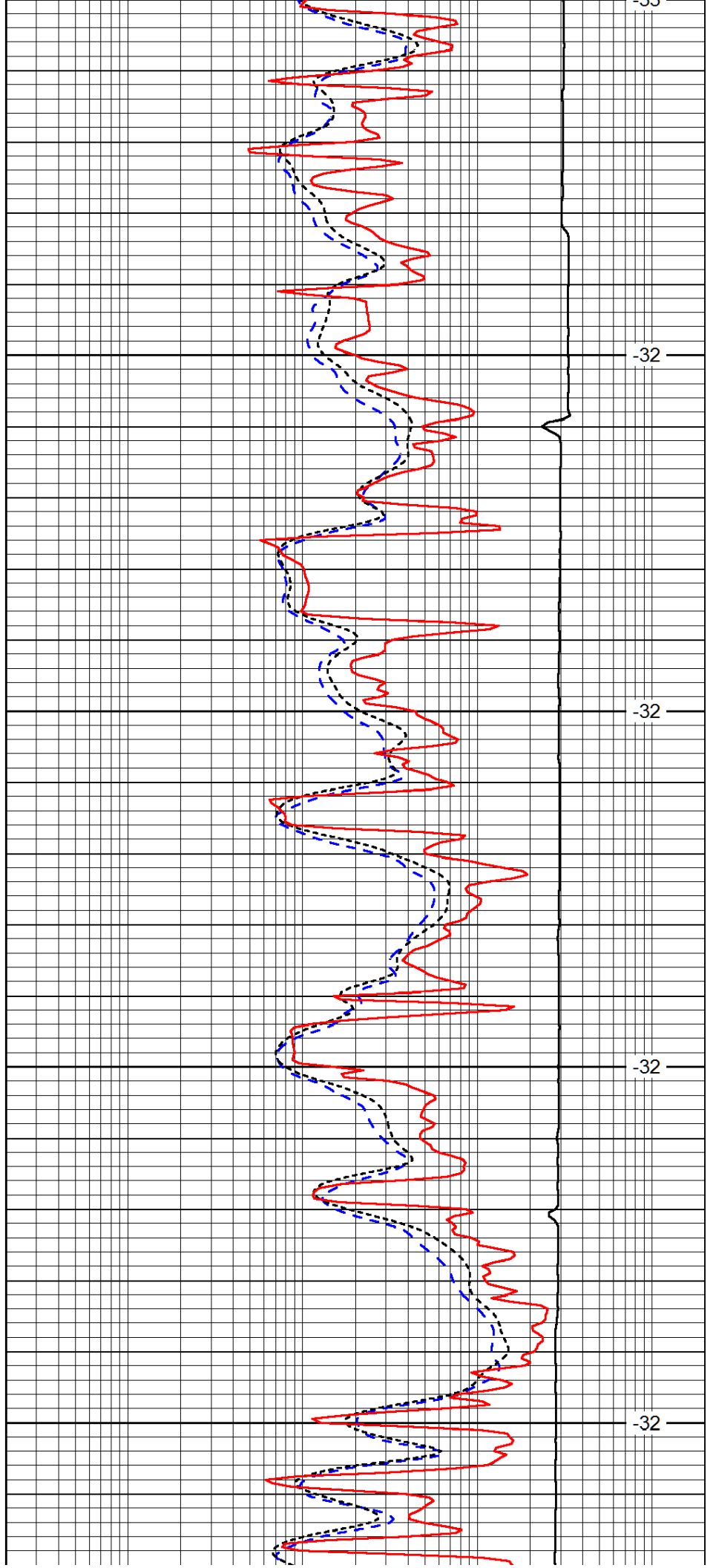
3800

3850

3900

3950

4000



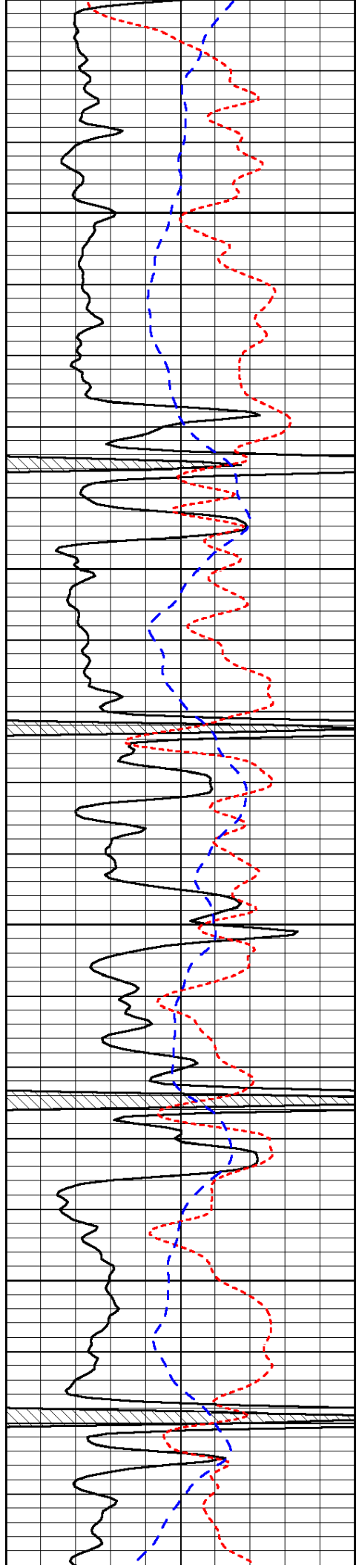
-33

-32

-32

-32

-32

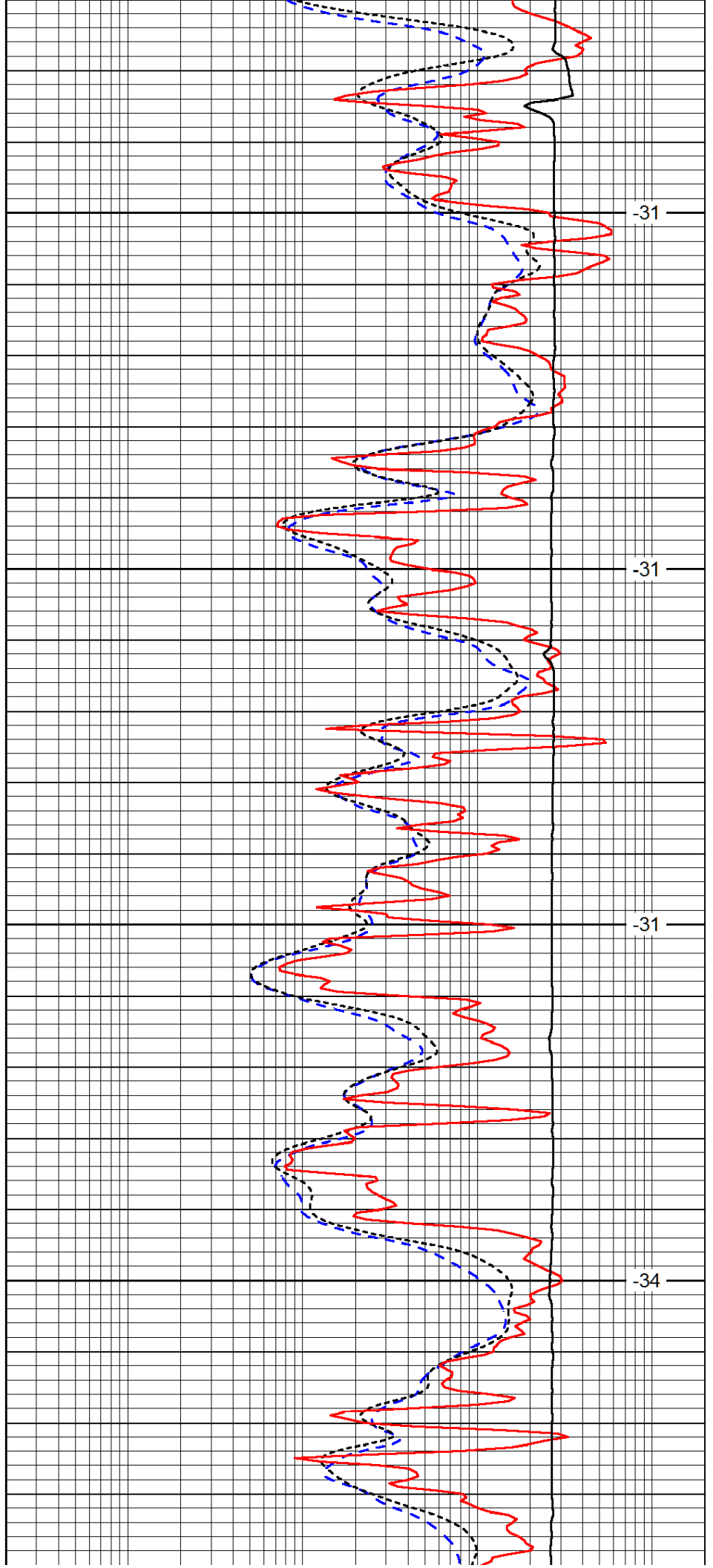


4050

4100

4150

4200

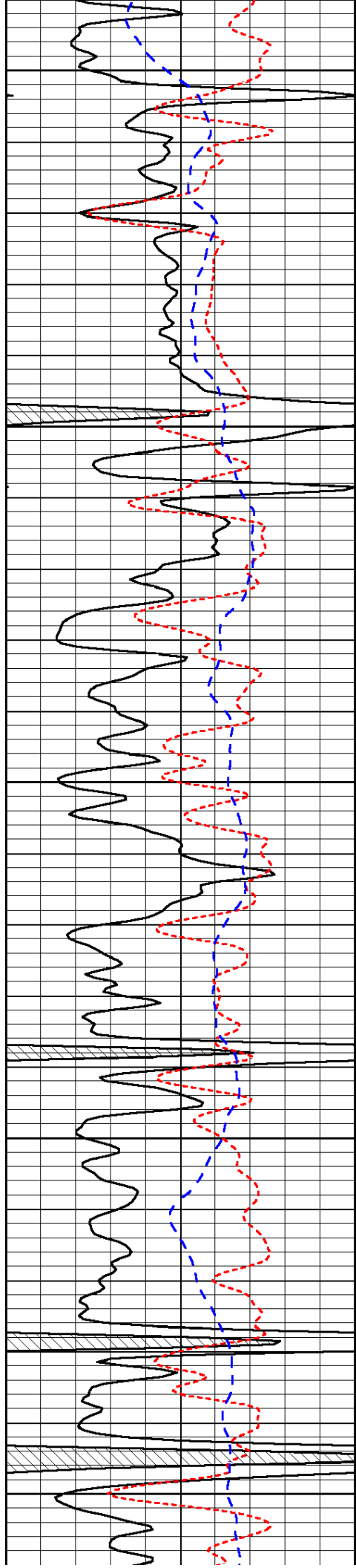


-31

-31

-31

-34



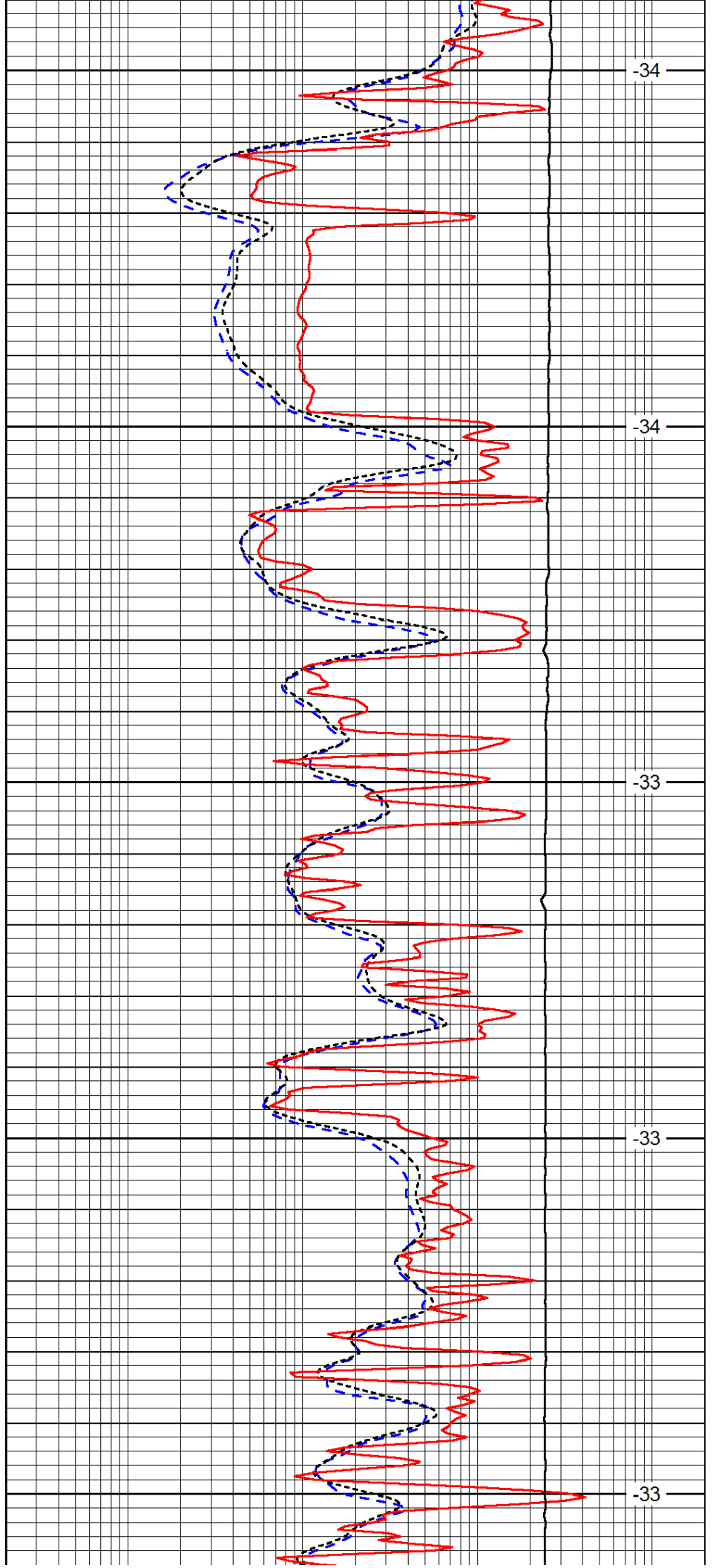
4250

4300

4350

4400

4450



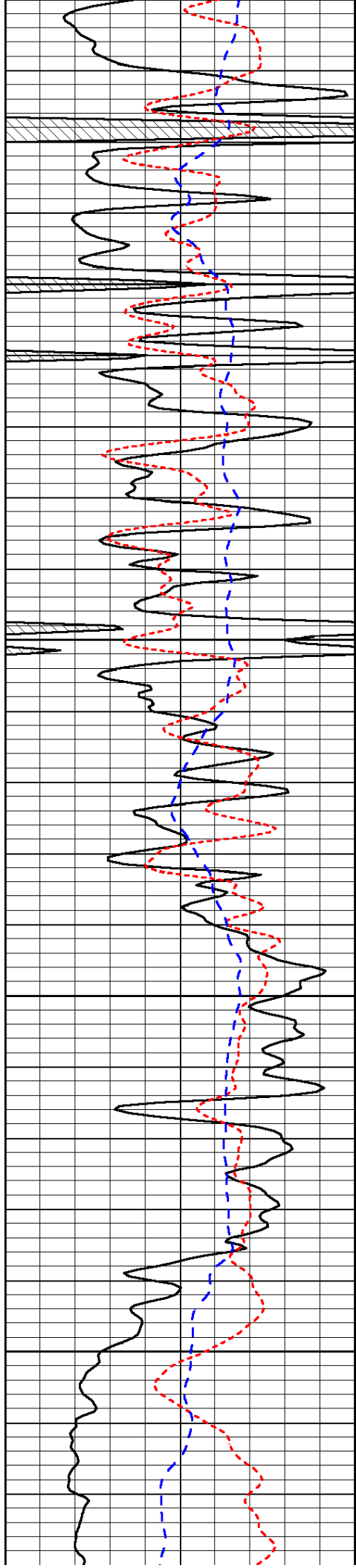
-34

-34

-33

-33

-33

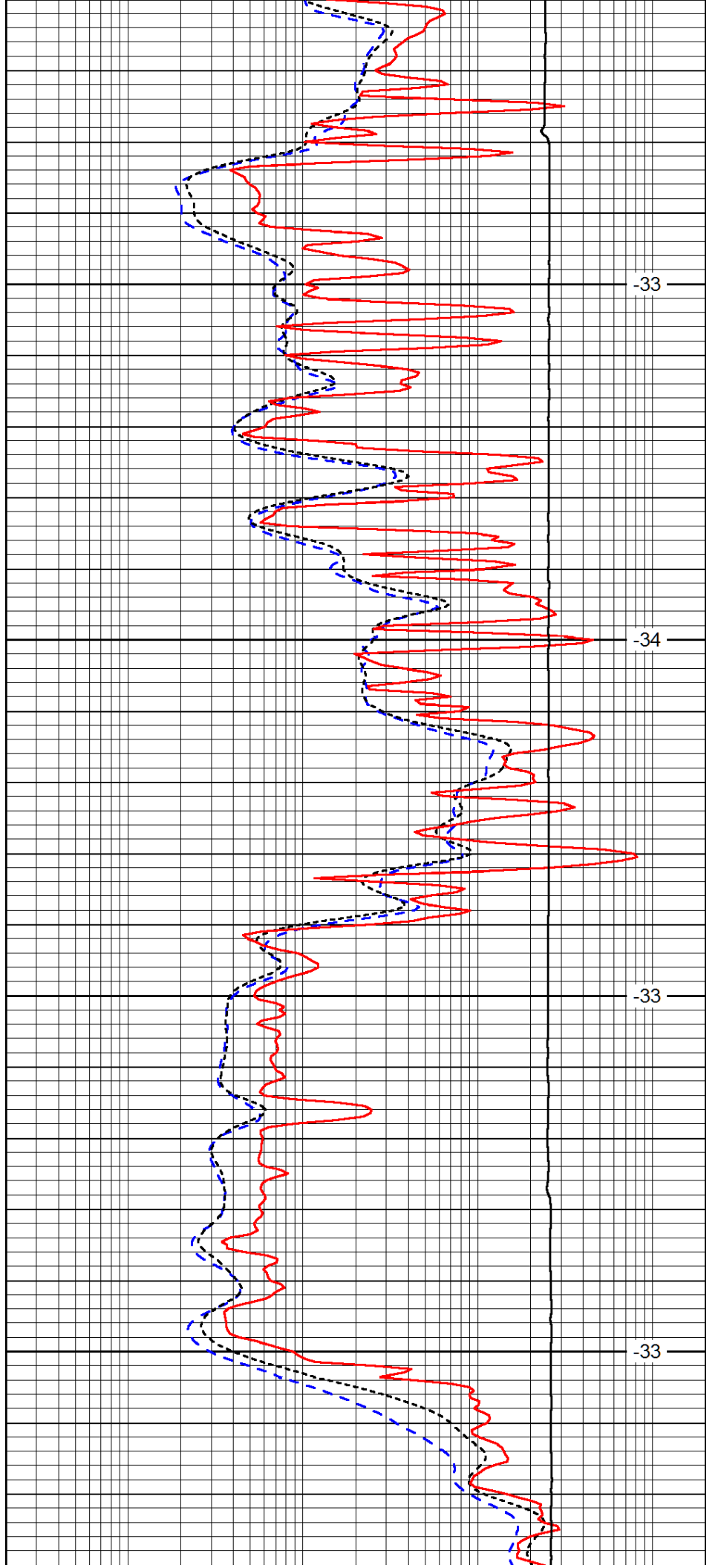


4500

4550

4600

4650

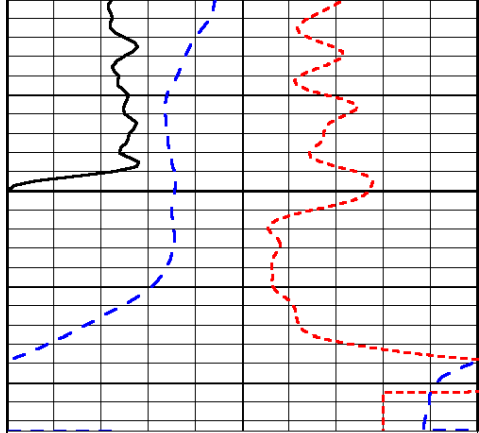


-33

-34

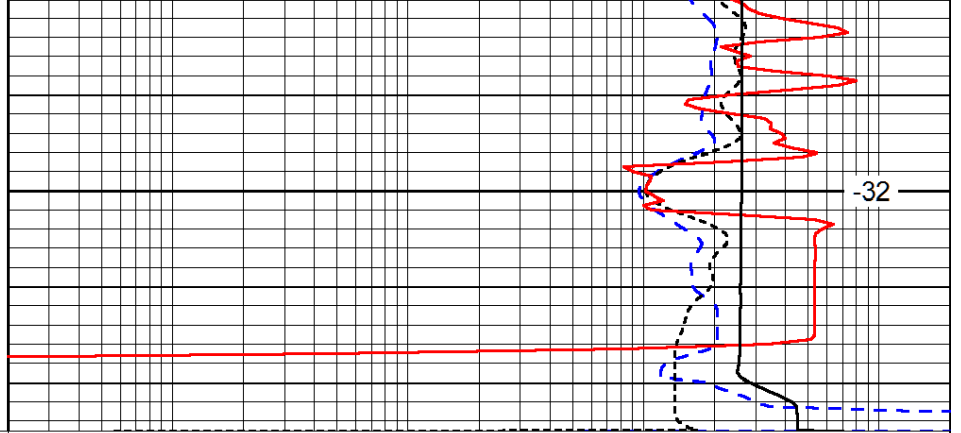
-33

-33



4700

0	Gamma Ray (GAPI)	150
-160	RXO/RT	40
-200	SP (mV)	0



-32

0.2	Deep Resistivity (Ohm-m)	2000
0.2	Medium Resistivity (Ohm-m)	2000
0.2	Shallow Resistivity (Ohm-m)	2000
10000	Line Tension (lb)	0

LSPD
(ft/min)