



Pioneer Energy Services

Dual Induction Log

API No.	15-109-21,193-00-00		
Company	Lario Oil & Gas Company		
Well	Rippetoe No.2-36		
Field			
County	Logan	State	Kansas
Location	1650' FNL & 2310' FWL		
Sec:	36	Twp:	14S Rge: 32W
Other Services	CNL/CDL MEL		

Permanent Datum	Ground Level	Elevation	2721
Log Measured From	Kelly Bushing	11 Ft. Above Perm. Datum	
Drilling Measured From	Kelly Bushing		
Date	8/16/2013		
Run Number	One		
Depth Driller	4560		
Depth Logger	4560		
Bottom Logged Interval	4559		
Top Log Interval	200		
Casing Driller	8.625 @ 222		
Casing Logger	222		
Bit Size	7.875		
Type Fluid in Hole	Chemical		
Salinity,ppm CL	5,000		
Density / Viscosity	9.3	51	
pH / Fluid Loss	9.5	9.6	
Source of Sample	Flowline		
Rm @ Meas. Temp	.54	@	70
Rmf @ Meas. Temp	.41	@	70
Rmc @ Meas. Temp	.73	@	70
Source of Rmf / Rmc	Charts		
Rm @ BHT	.31	@	122
Operating Rig Time	4 Hours		
Max Rec. Temp. F	122		
Equipment Number	17		
Location	Hays		
Recorded By	C. Desaire		
Witnessed By	Steve Davis		

<<< Fold Here >>>

All interpretations are opinions based on inferences from electrical or other measurements and we cannot and do not guarantee the accuracy or correctness of any interpretation, and we shall not, except in the case of gross or willful negligence on our part, be liable or responsible for any loss, costs, damages, or expenses incurred or sustained by anyone resulting from any interpretation made by any of our officers, agents or employees. These interpretations are also subject to our general terms and conditions set out in our current Price Schedule.

Comments

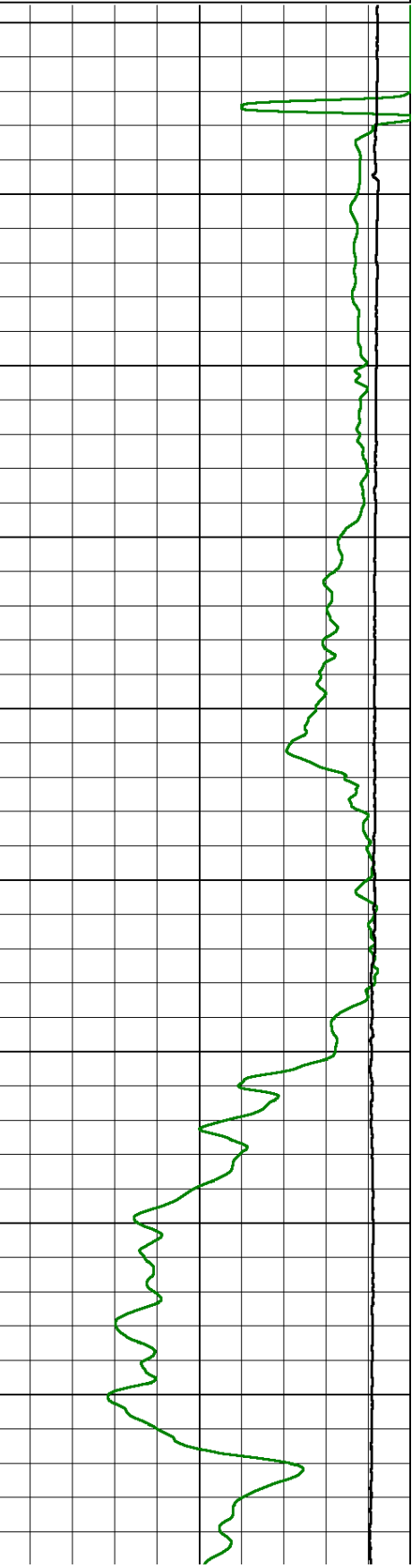
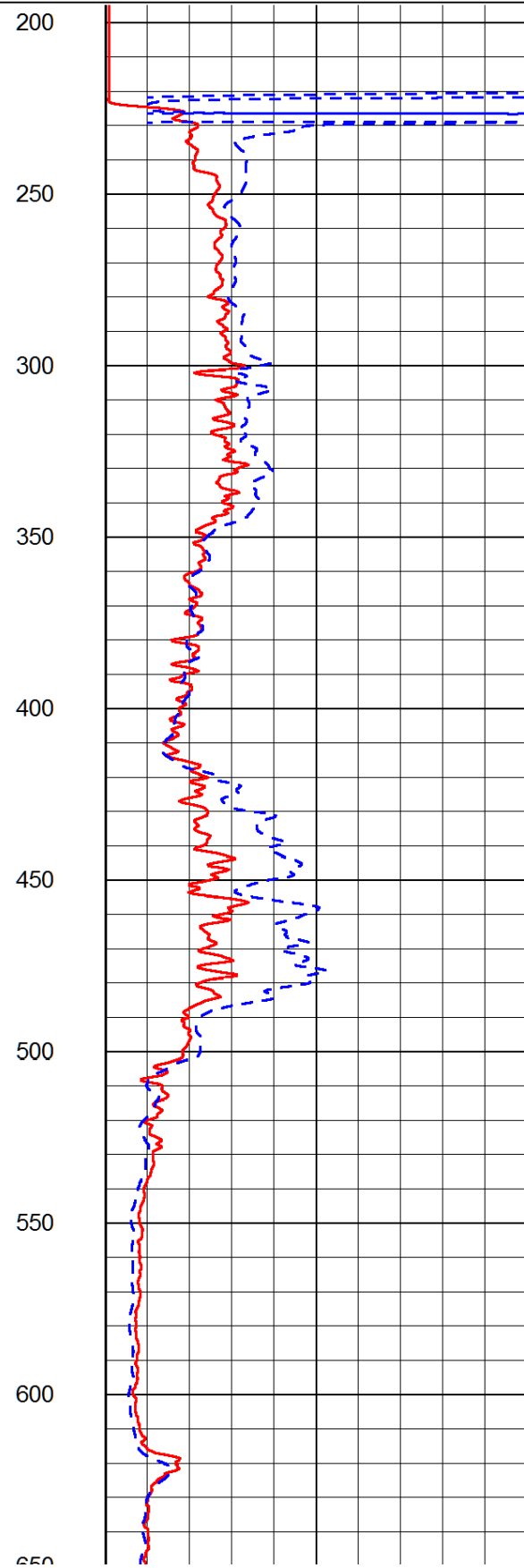
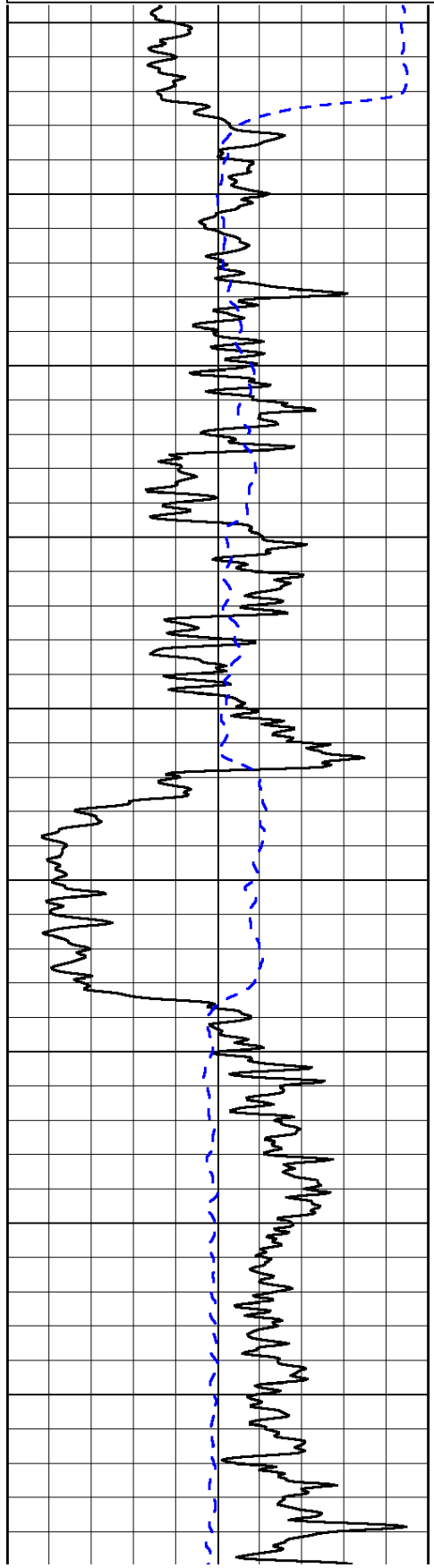
Thank you for using Log-Tech, Inc.
(785) 625-3858

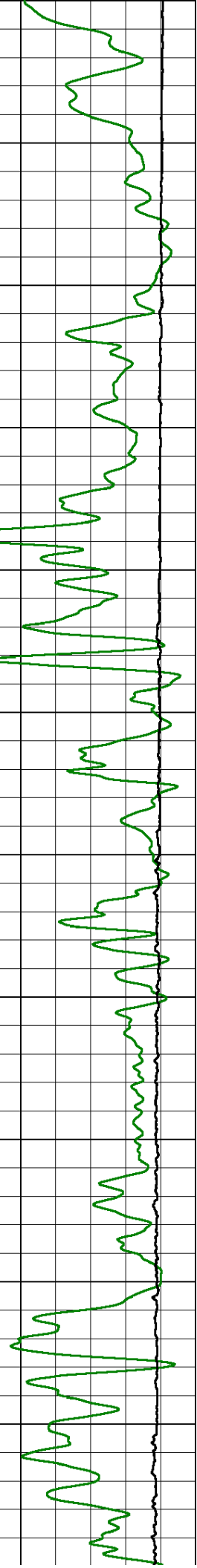
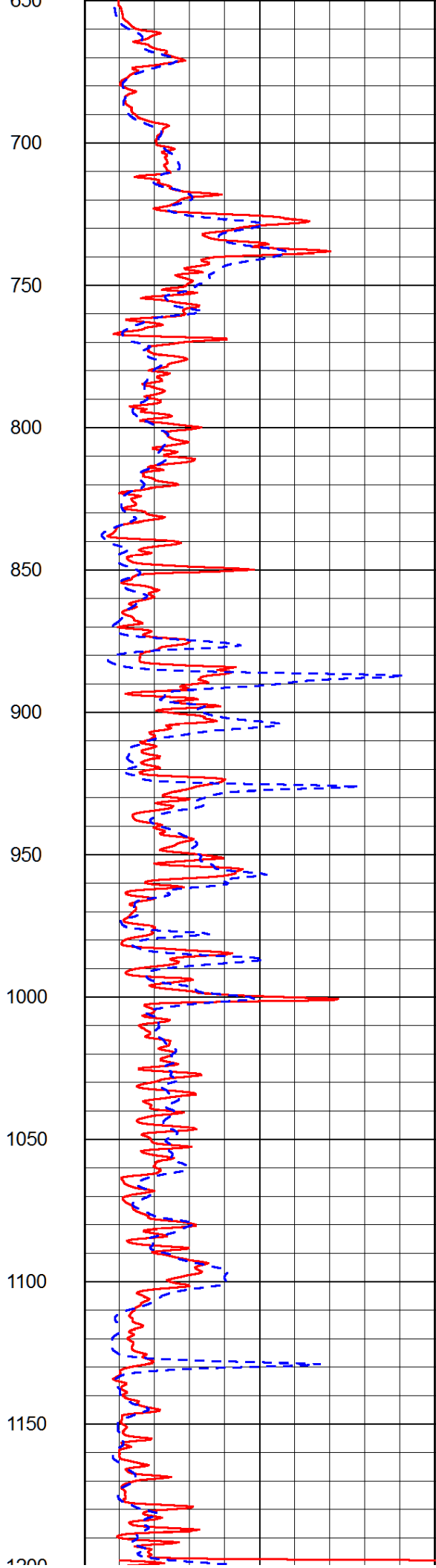
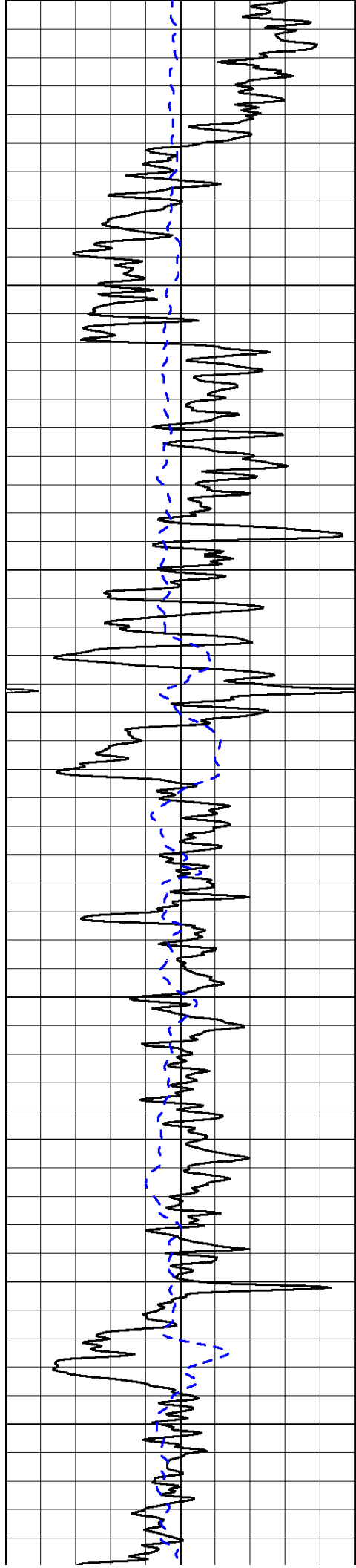
Oakley KS, S to Jayhawk Rd, 3/4 S,
1 1/2 E thru gate with tire, 1/8 N, W Into

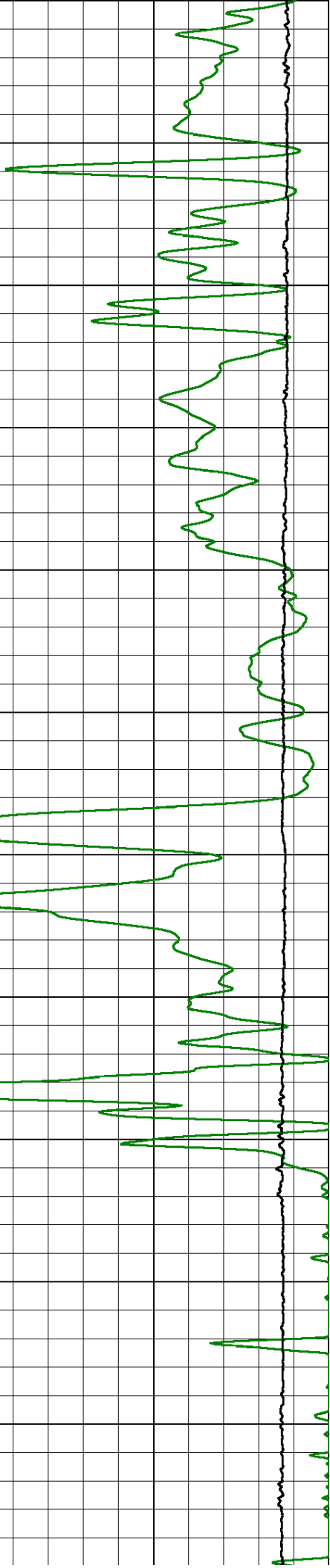
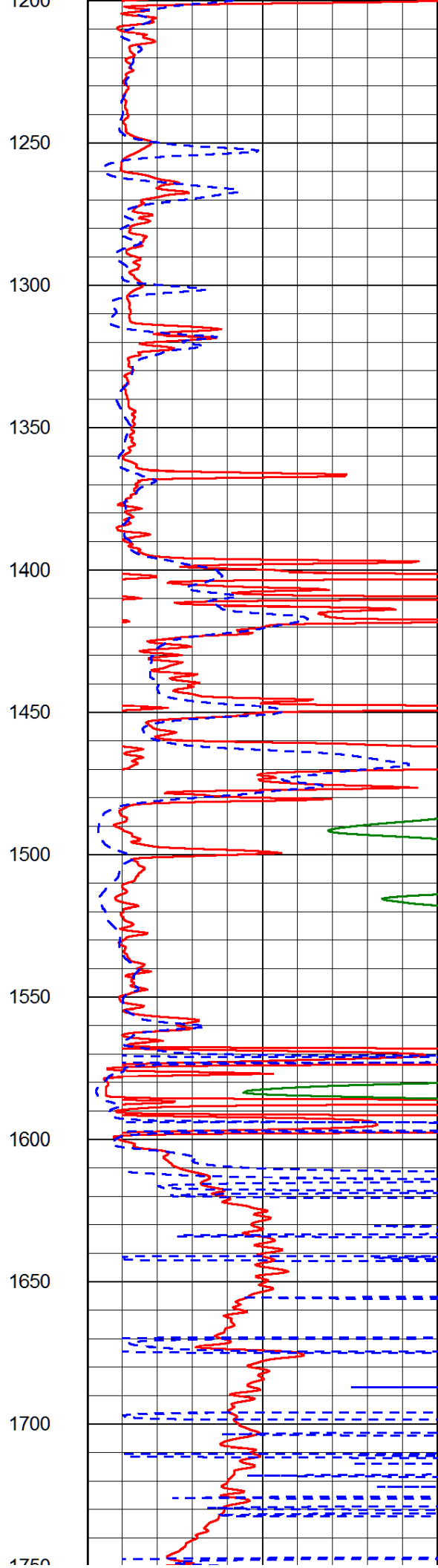
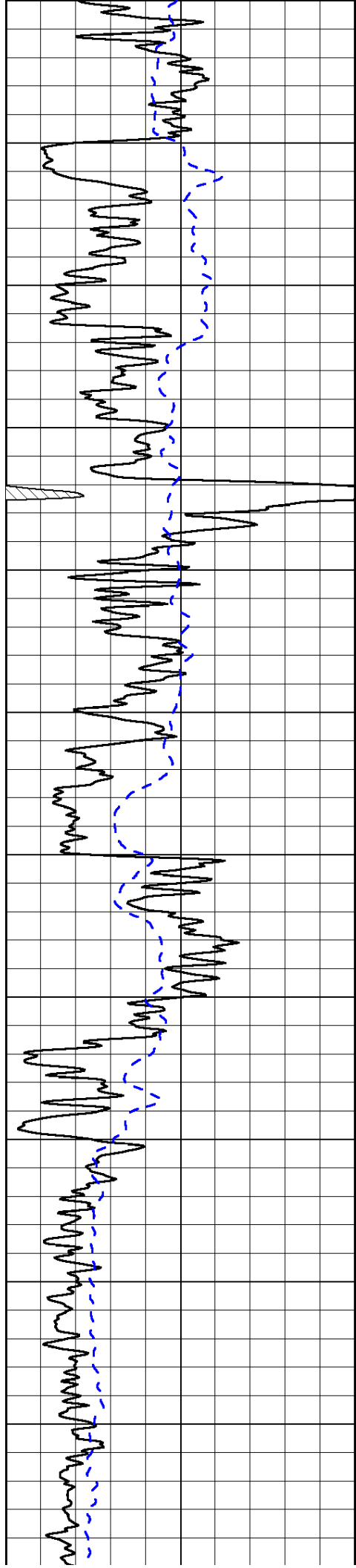
Database File: lariohd.db
 Dataset Pathname: dil/larstk
 Presentation Format: dil2in
 Dataset Creation: Fri Aug 16 15:38:08 2013
 Charted by: Depth in Feet scaled 1:600

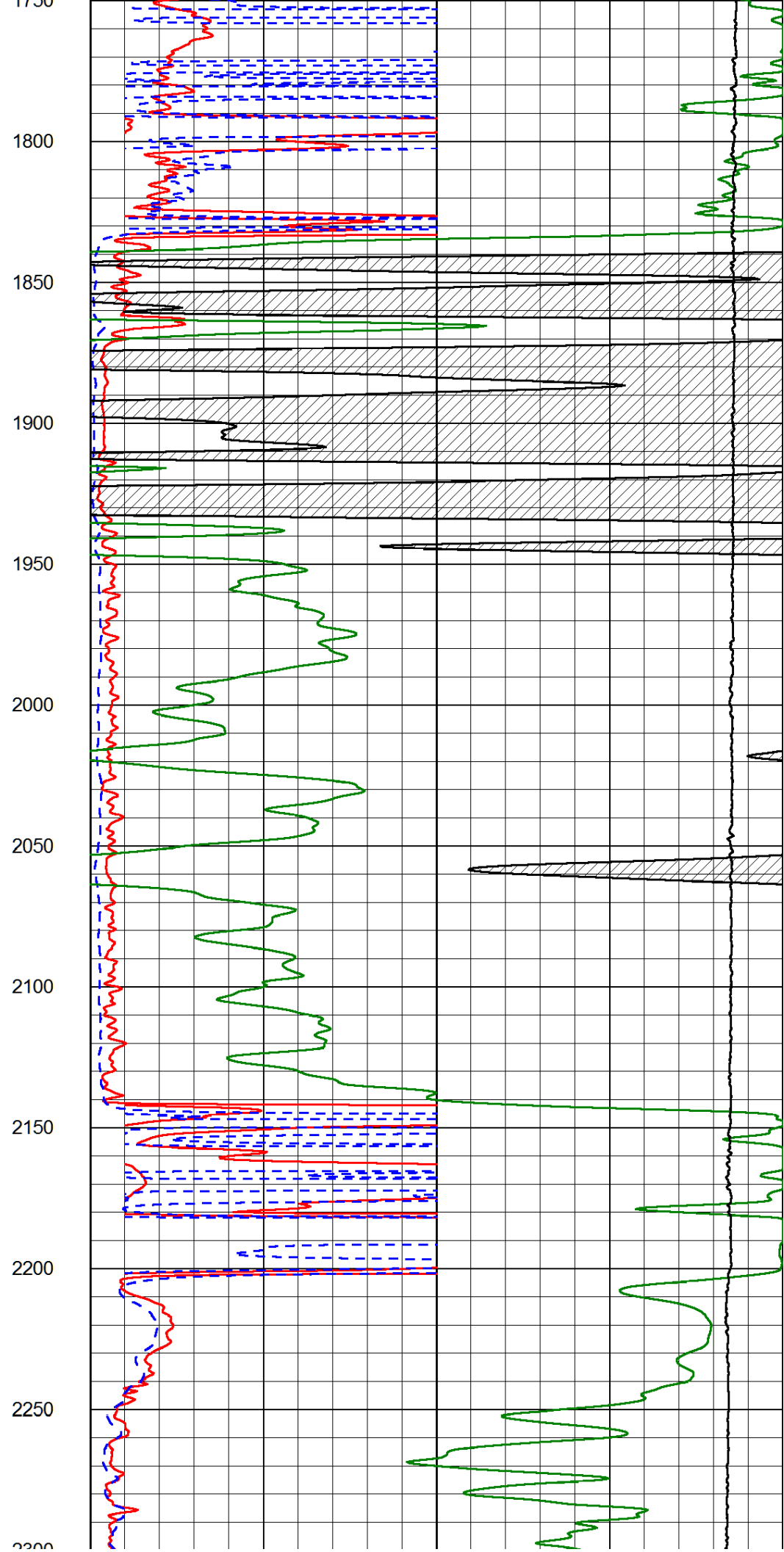
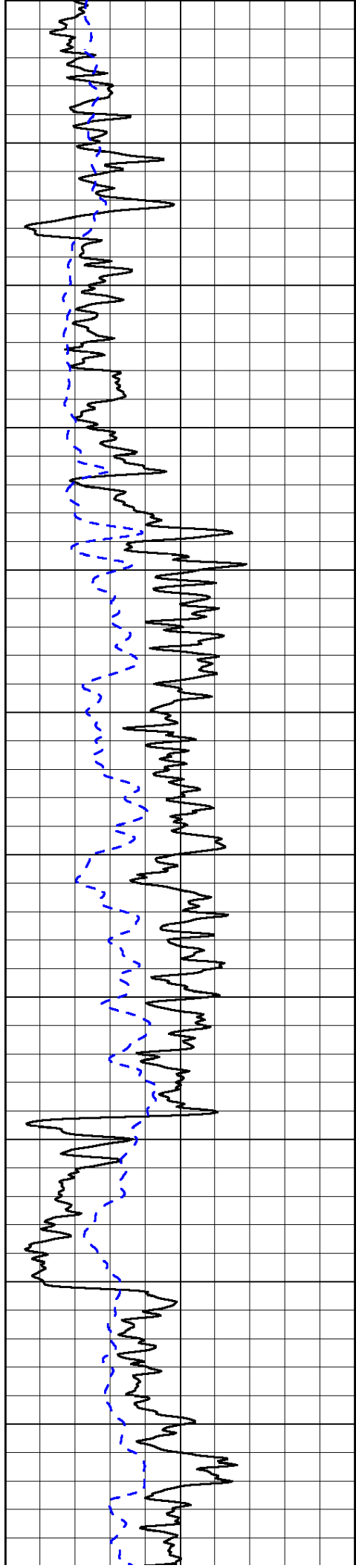
0	Gamma Ray (GAPI)	150
-200	SP (mV)	0

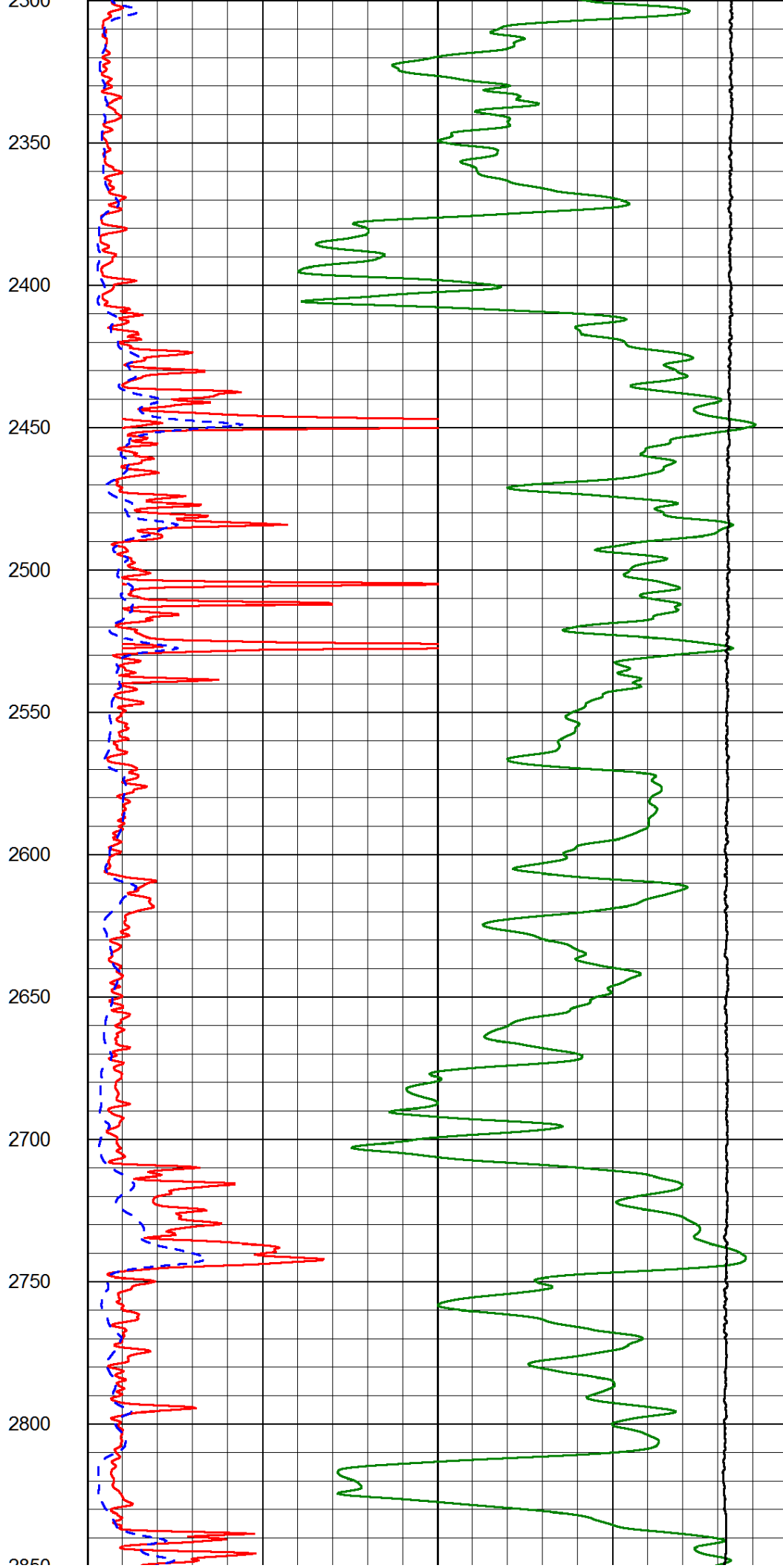
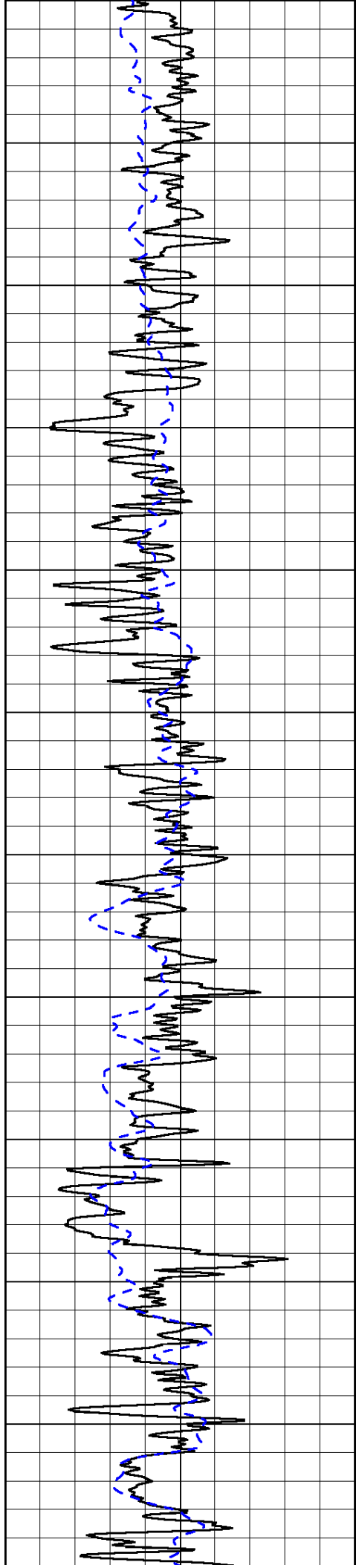
0	Shallow Resistivity (Ohm-m)	50
0	Deep Resistivity (Ohm-m)	50
1000	Conductivity (Ohm-m)	0
15000	Line Tension (lb)	0
50	Shallow Resistivity (Ohm-m)	500
50	Deep Resistivity (Ohm-m)	500

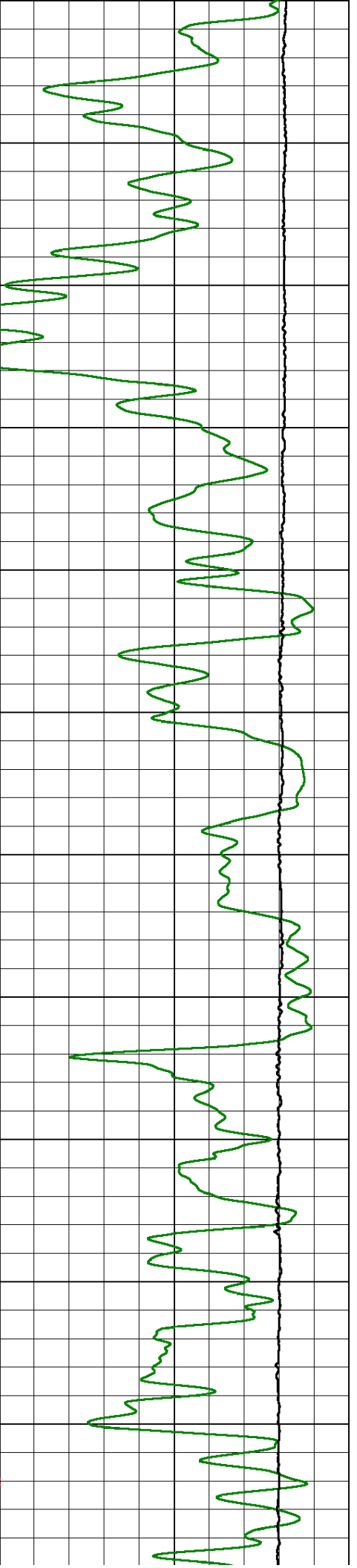
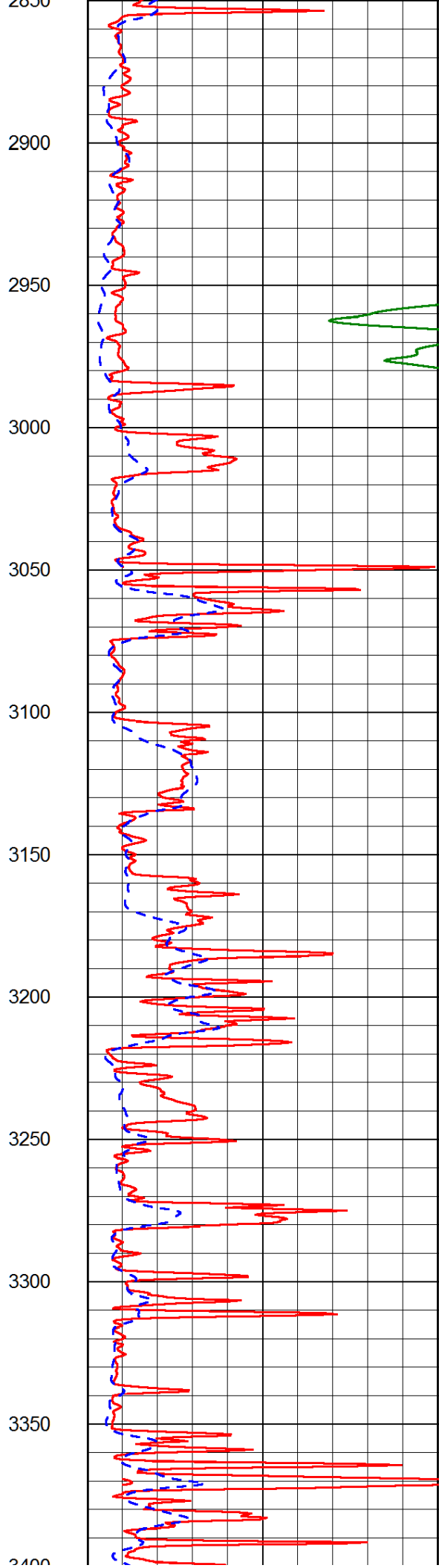
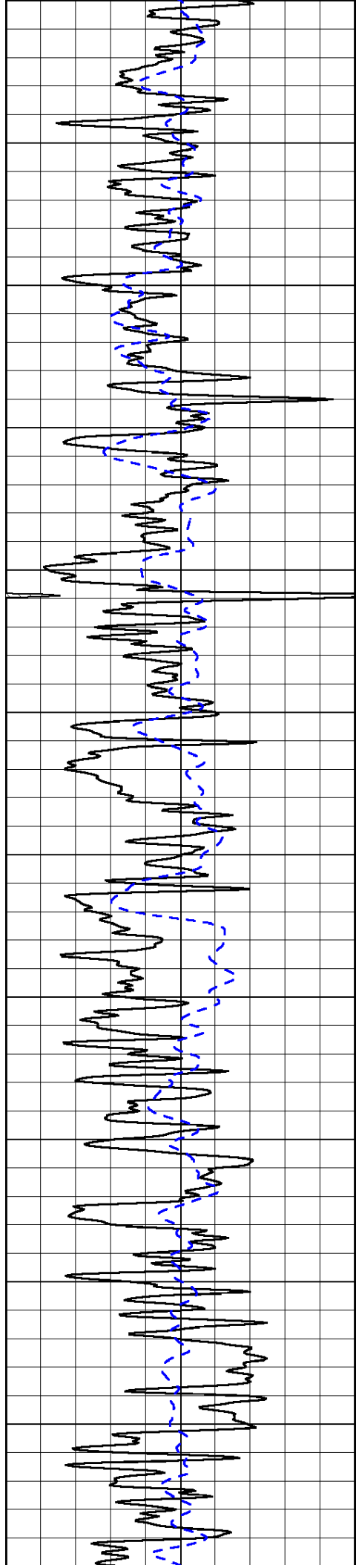


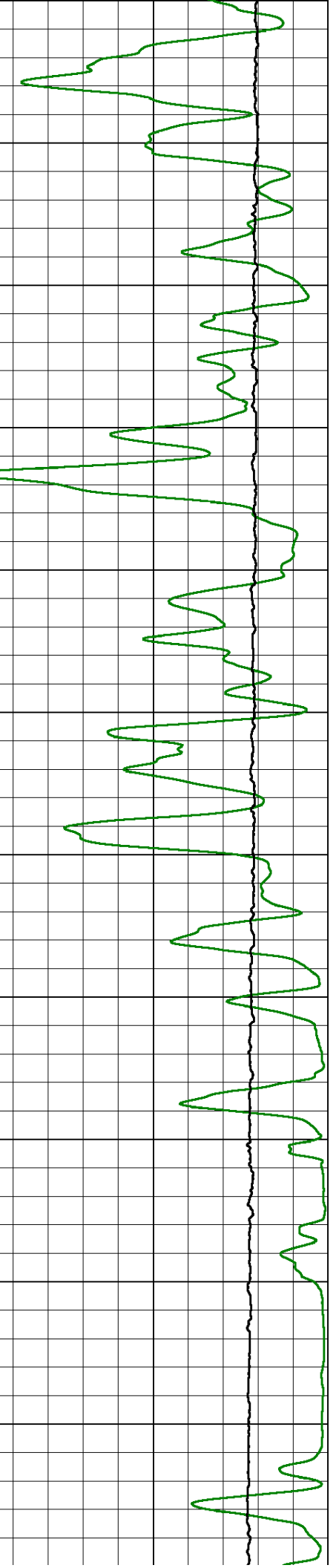
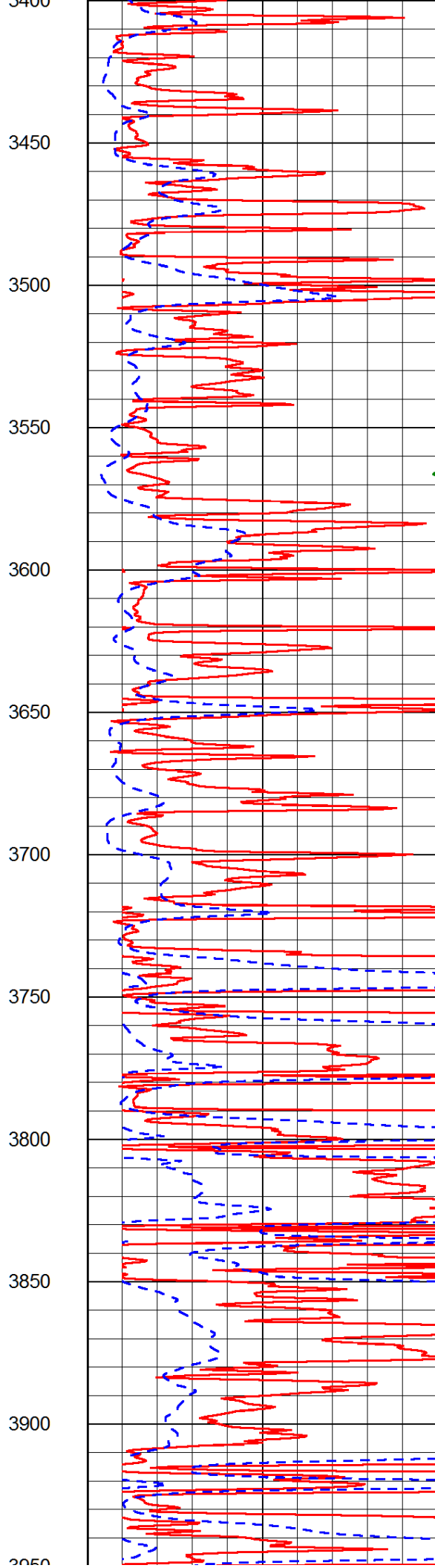
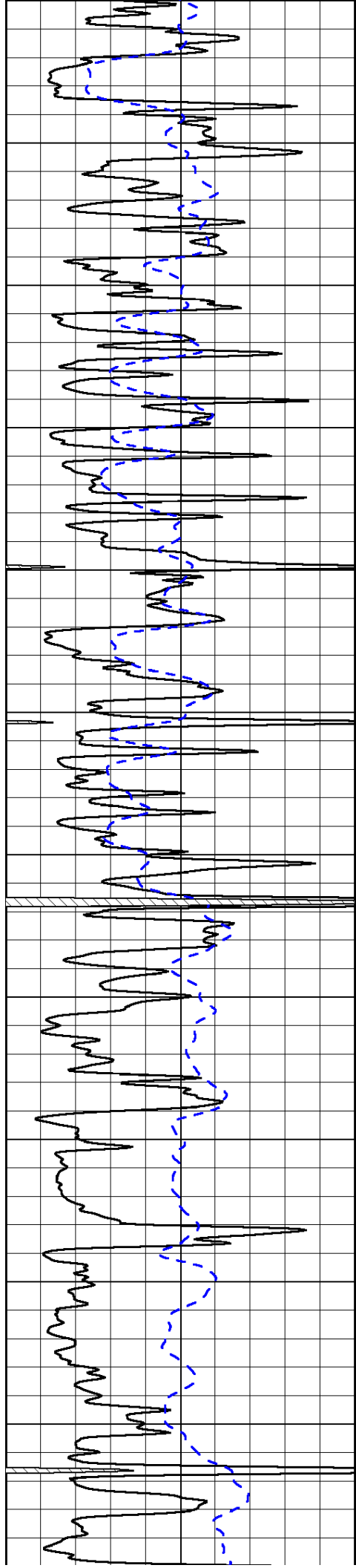


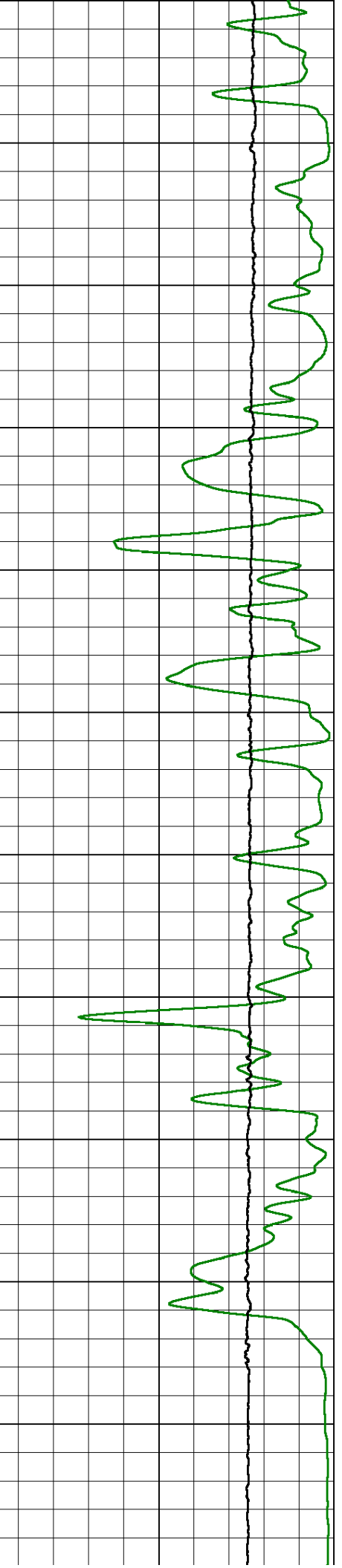
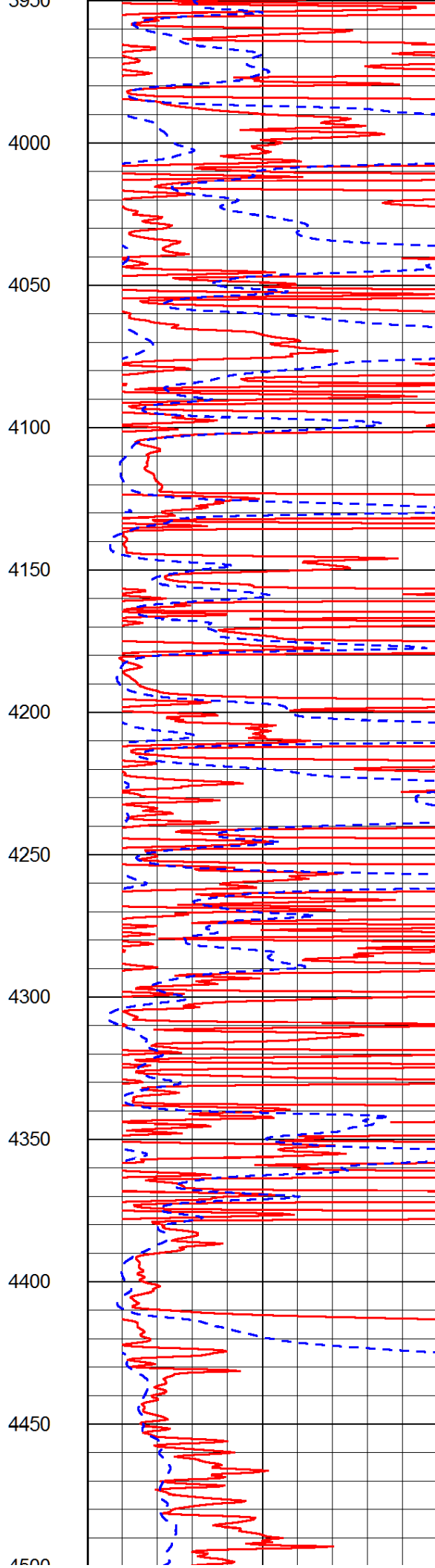
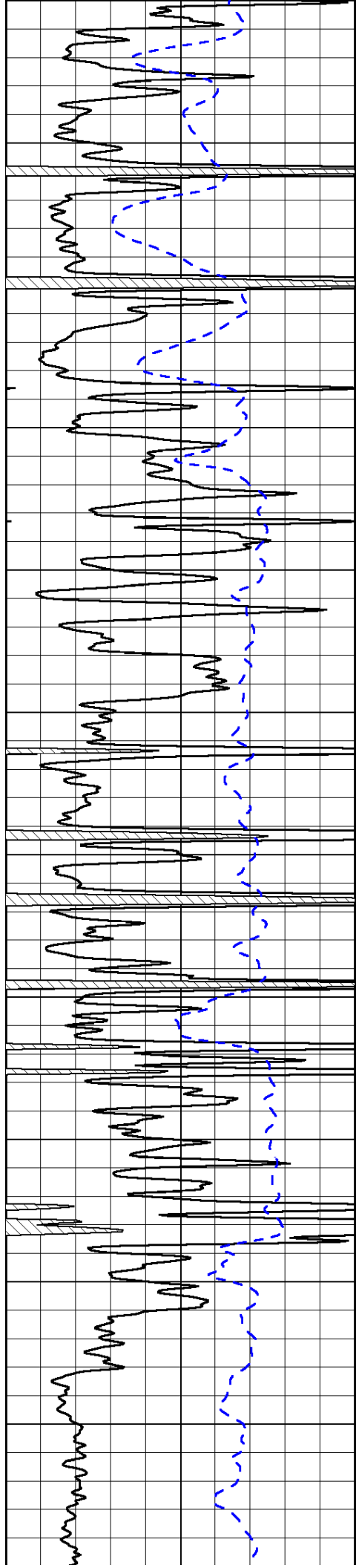


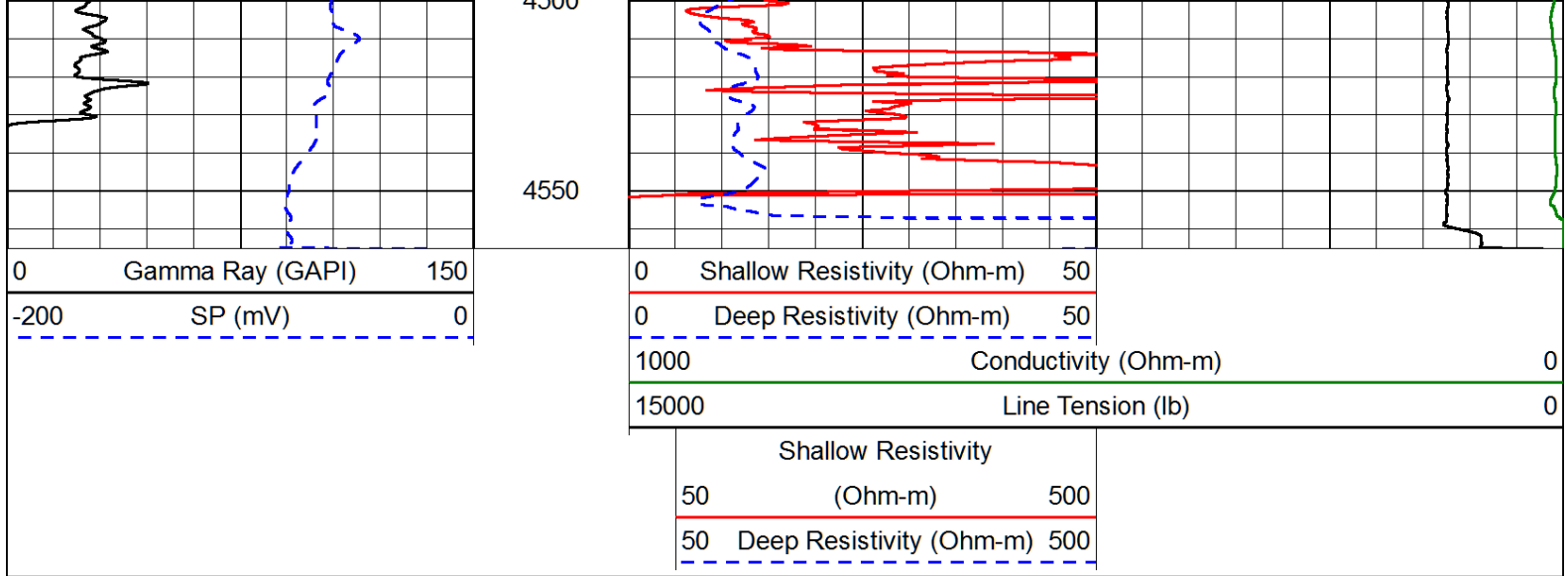




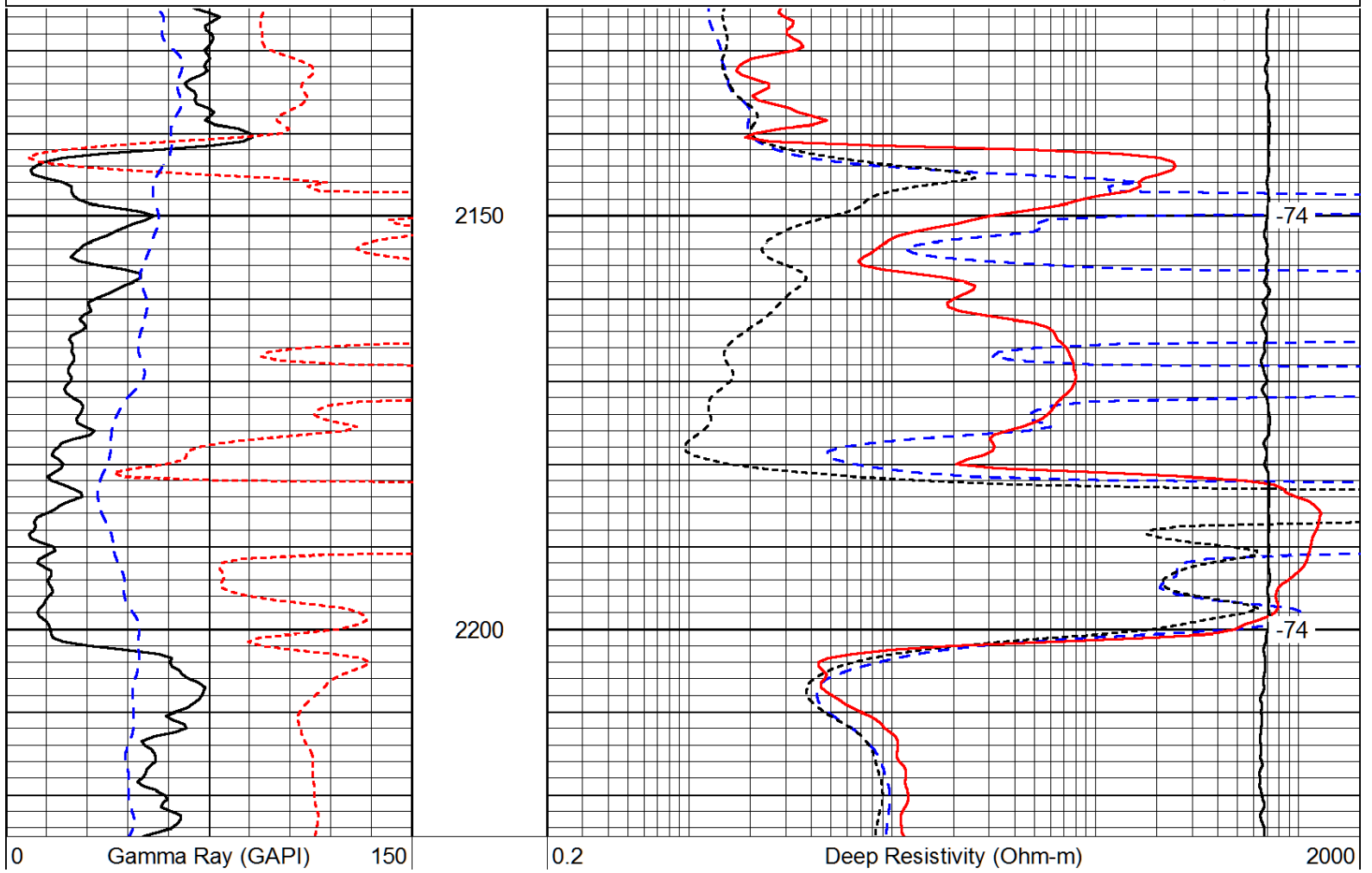
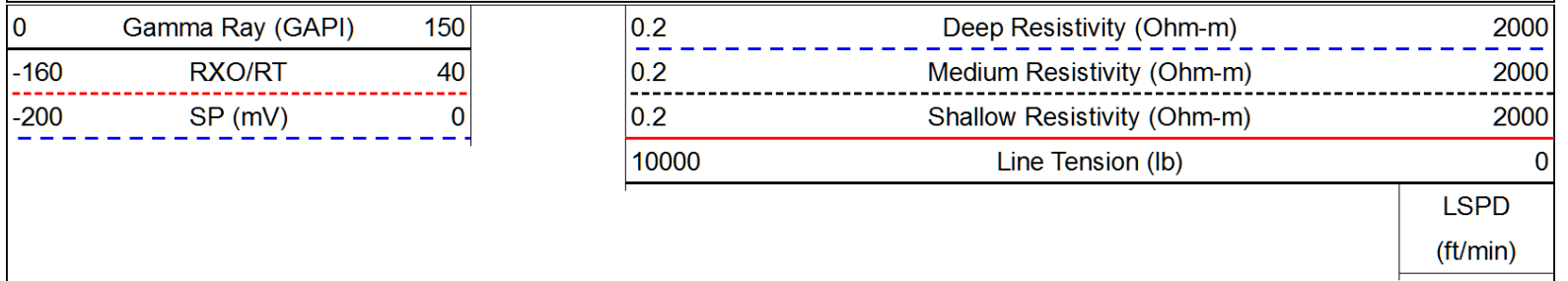








Database File: lariohd.db
 Dataset Pathname: dil/larstk
 Presentation Format: dil
 Dataset Creation: Fri Aug 16 15:38:08 2013
 Charted by: Depth in Feet scaled 1:240



-160	RXO/RT	40
-200	SP (mV)	0

0.2	Medium Resistivity (Ohm-m)	2000
0.2	Shallow Resistivity (Ohm-m)	2000
10000	Line Tension (lb)	0

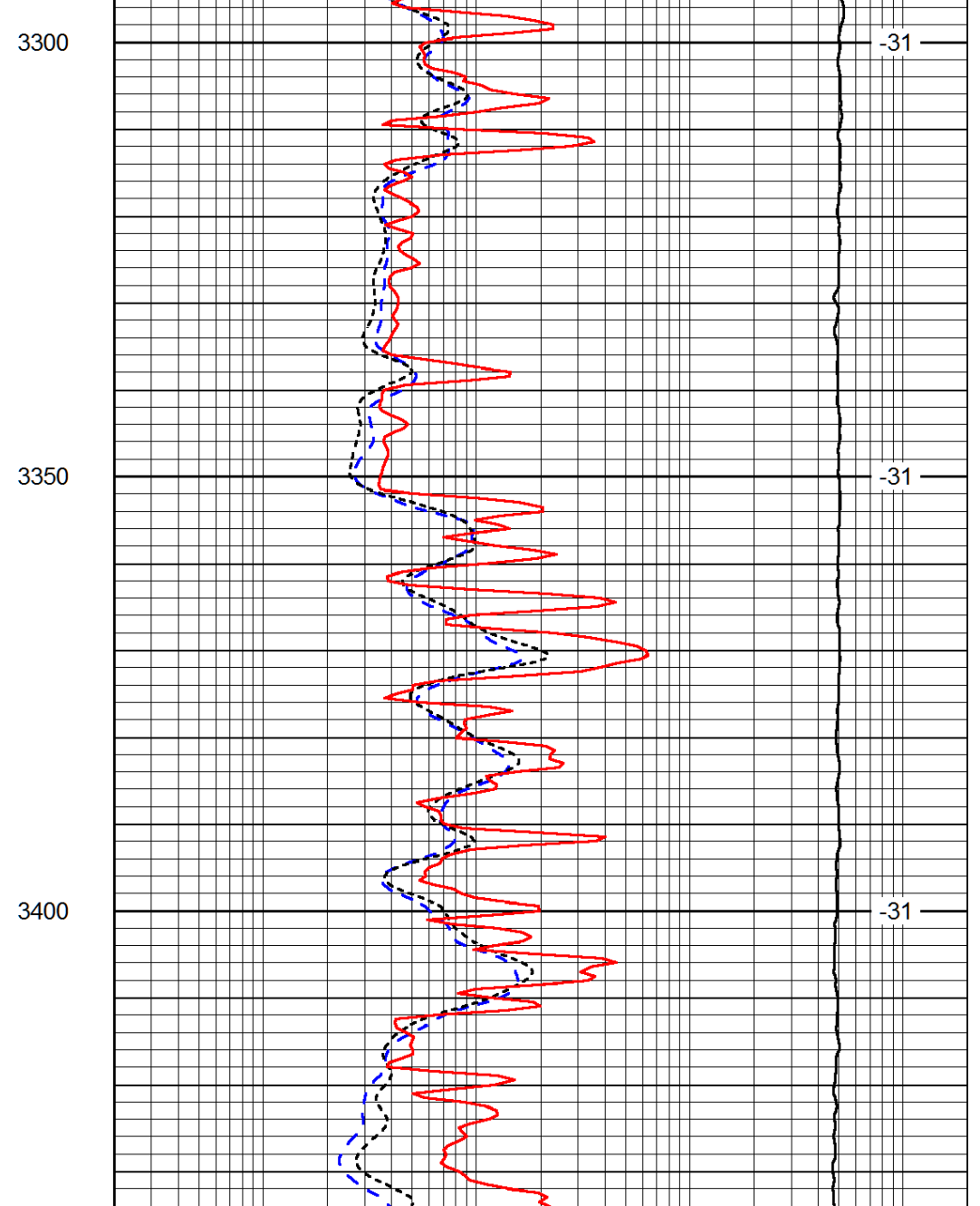
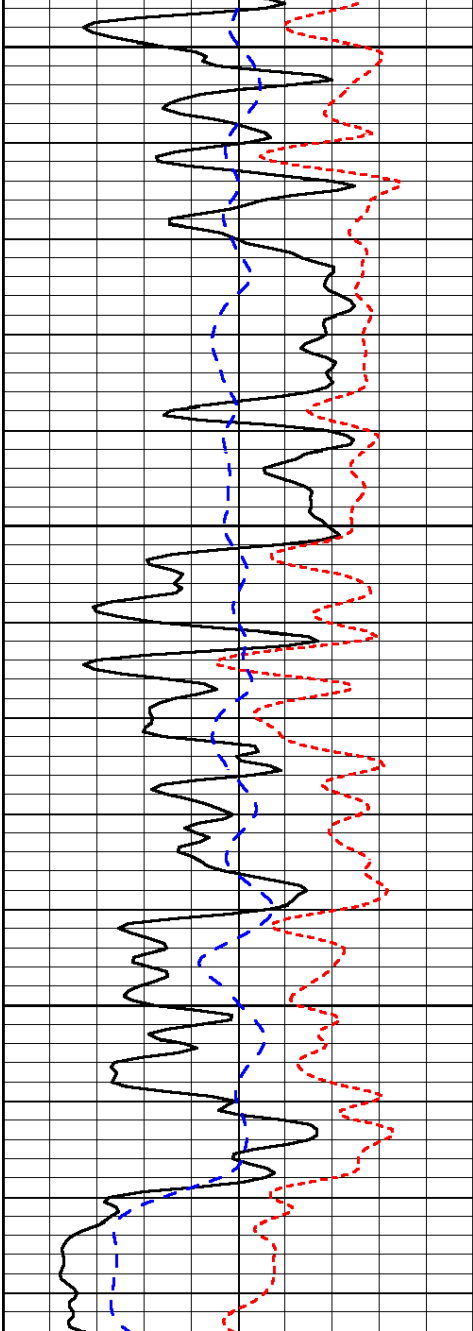
LSPD
(ft/min)

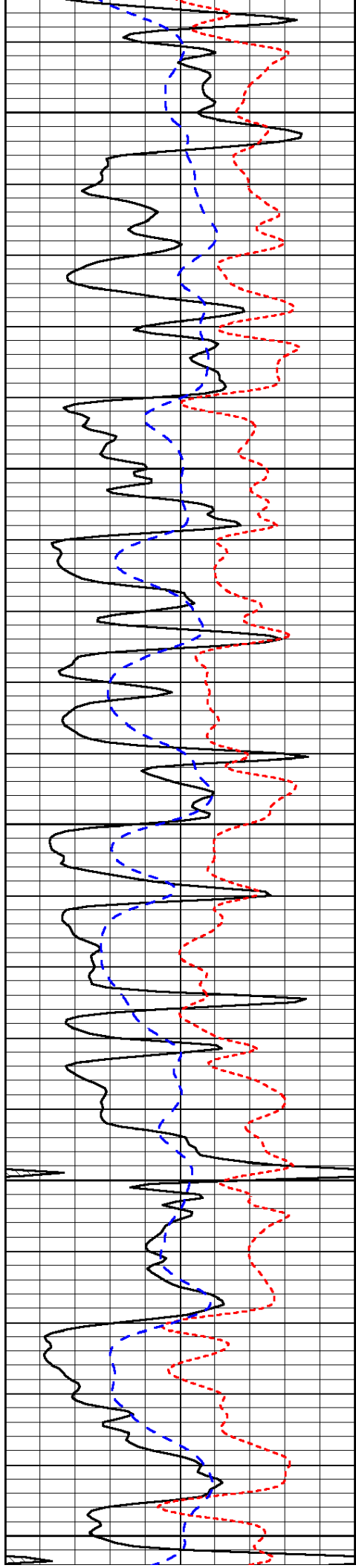
Database File: lariohd.db
 Dataset Pathname: dil/larstk
 Presentation Format: dil
 Dataset Creation: Fri Aug 16 15:38:08 2013
 Charted by: Depth in Feet scaled 1:240

0	Gamma Ray (GAPI)	150
-160	RXO/RT	40
-200	SP (mV)	0

0.2	Deep Resistivity (Ohm-m)	2000
0.2	Medium Resistivity (Ohm-m)	2000
0.2	Shallow Resistivity (Ohm-m)	2000
10000	Line Tension (lb)	0

LSPD
(ft/min)





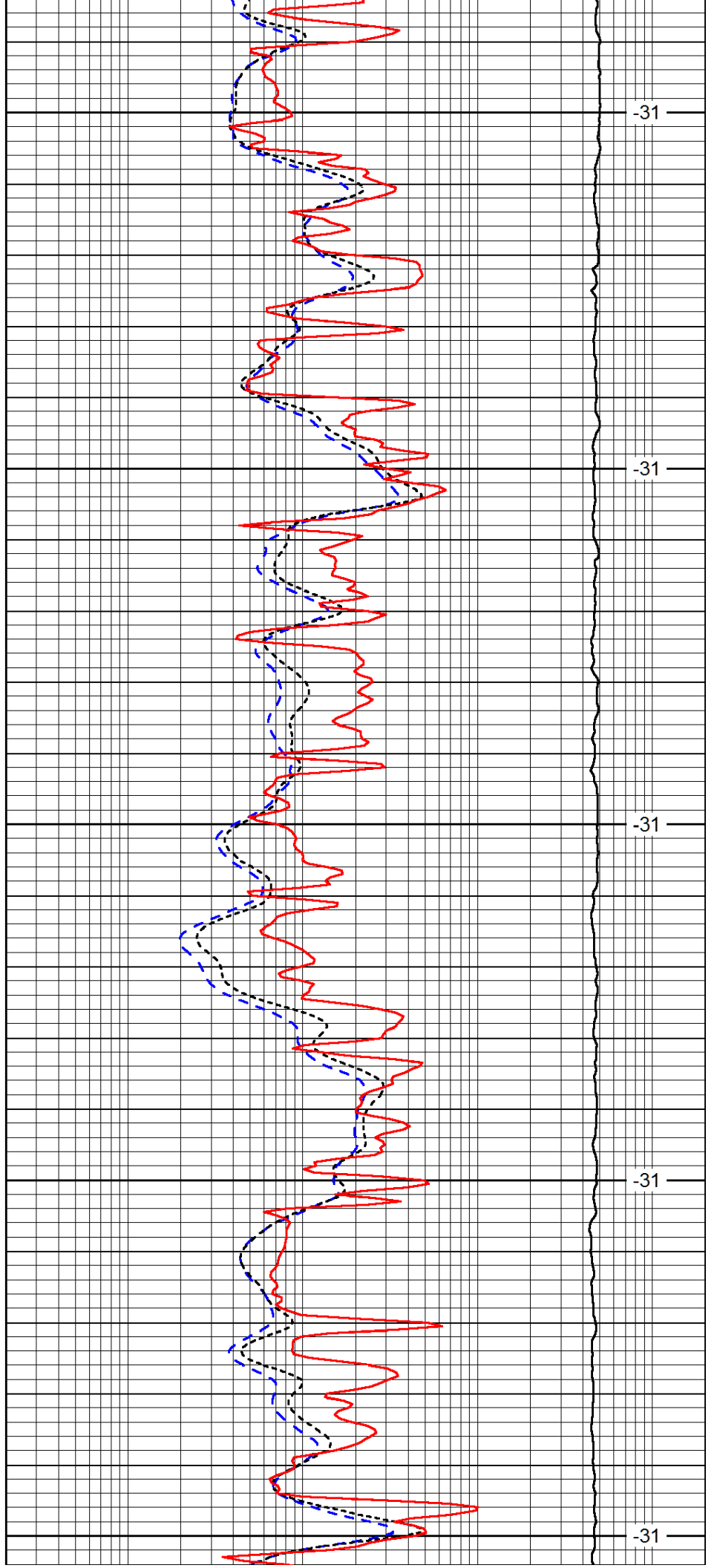
3450

3500

3550

3600

3650



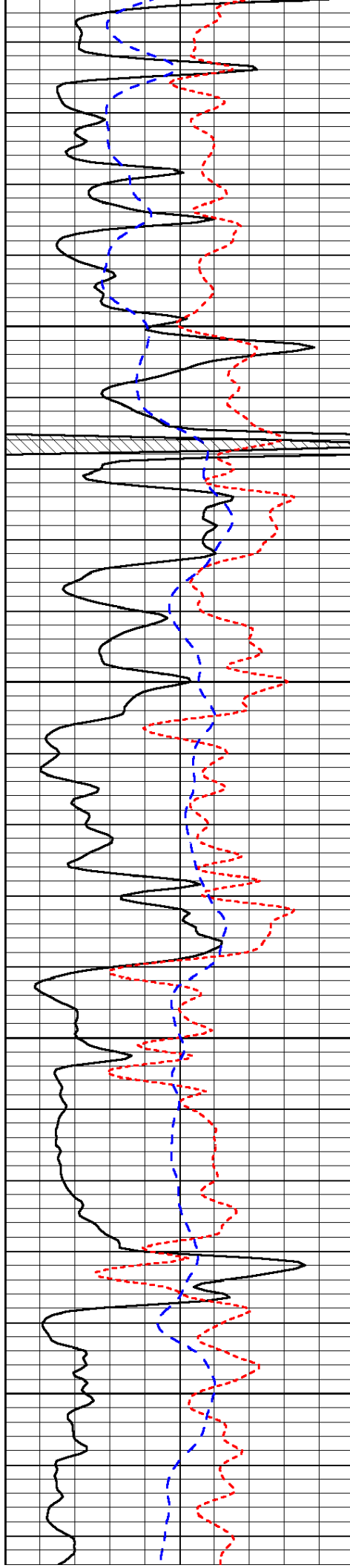
-31

-31

-31

-31

-31

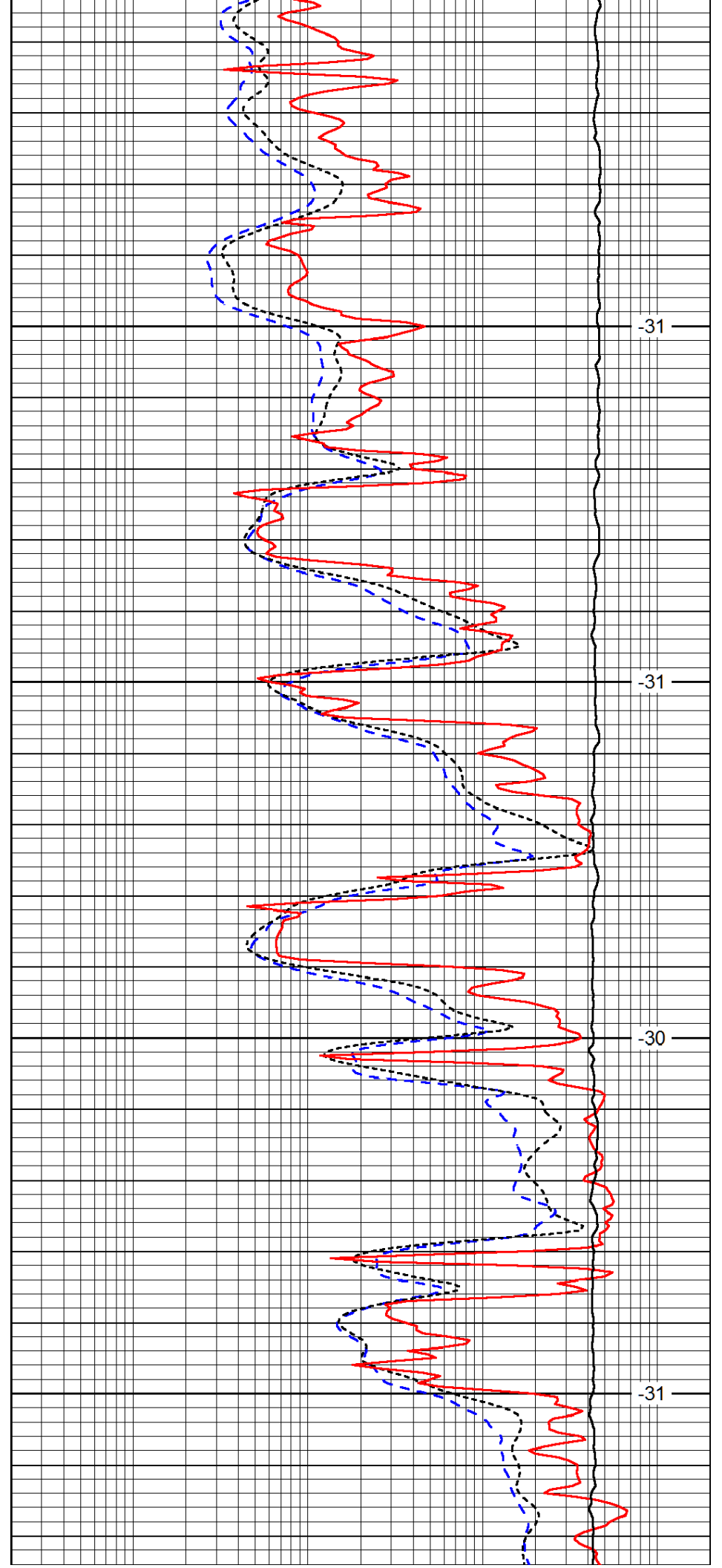


3700

3750

3800

3850

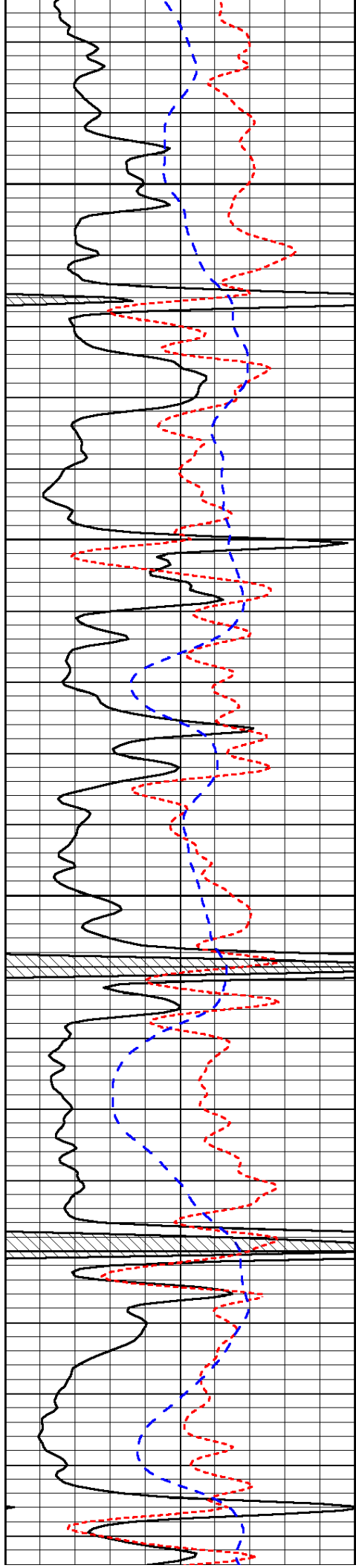


-31

-31

-30

-31

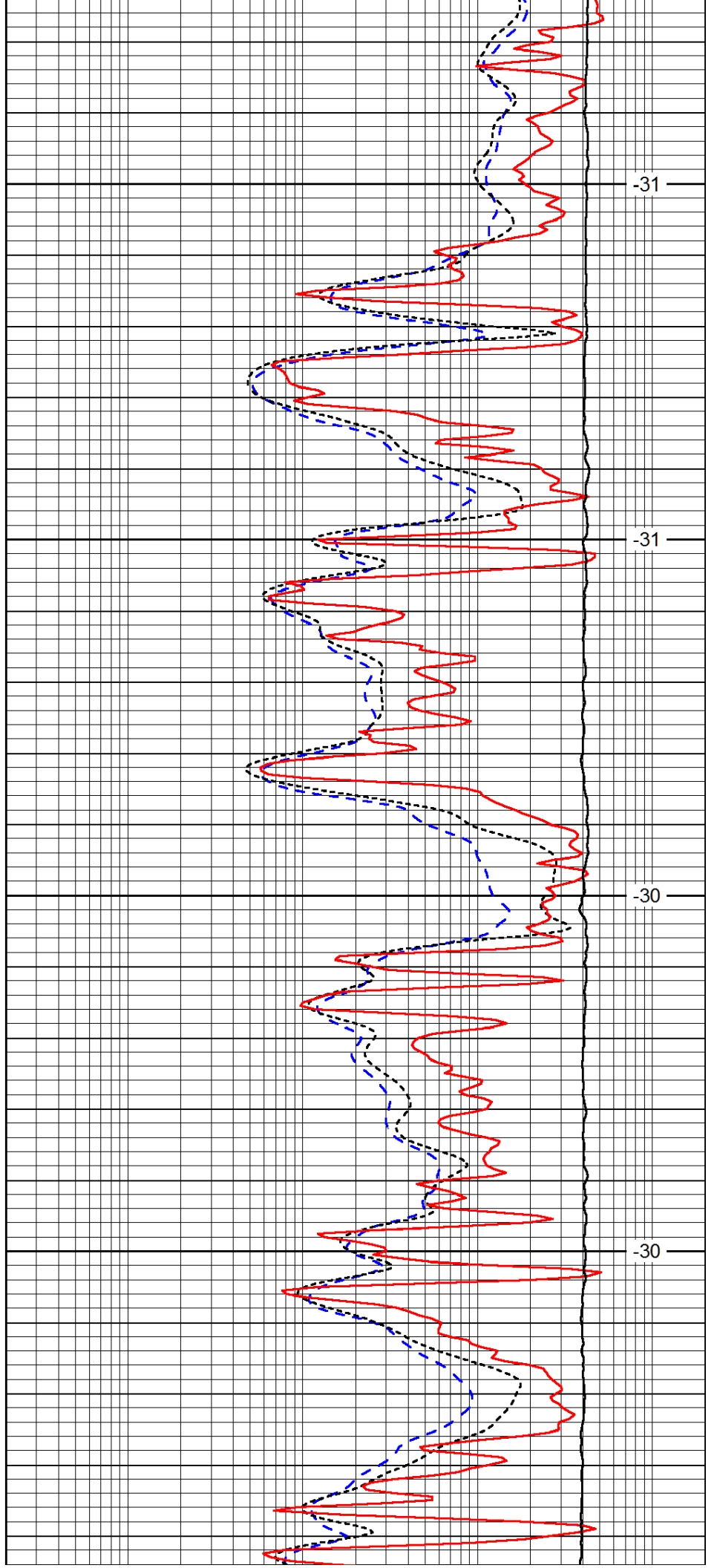


3900

3950

4000

4050

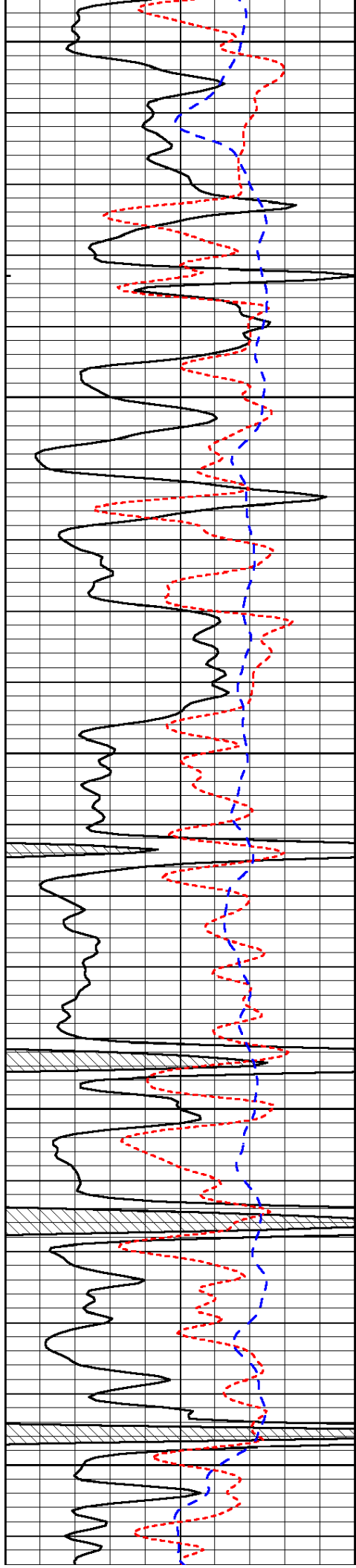


-31

-31

-30

-30



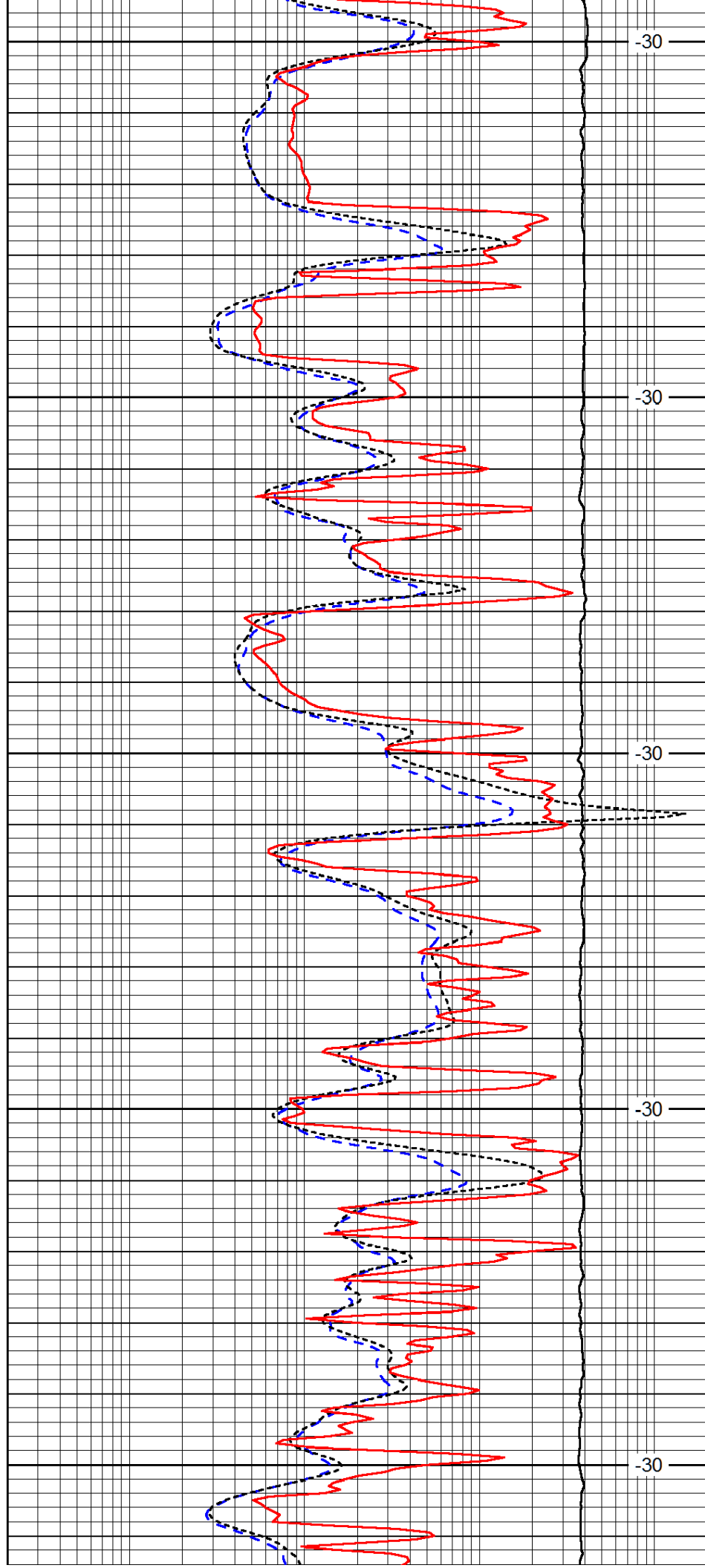
4100

4150

4200

4250

4300



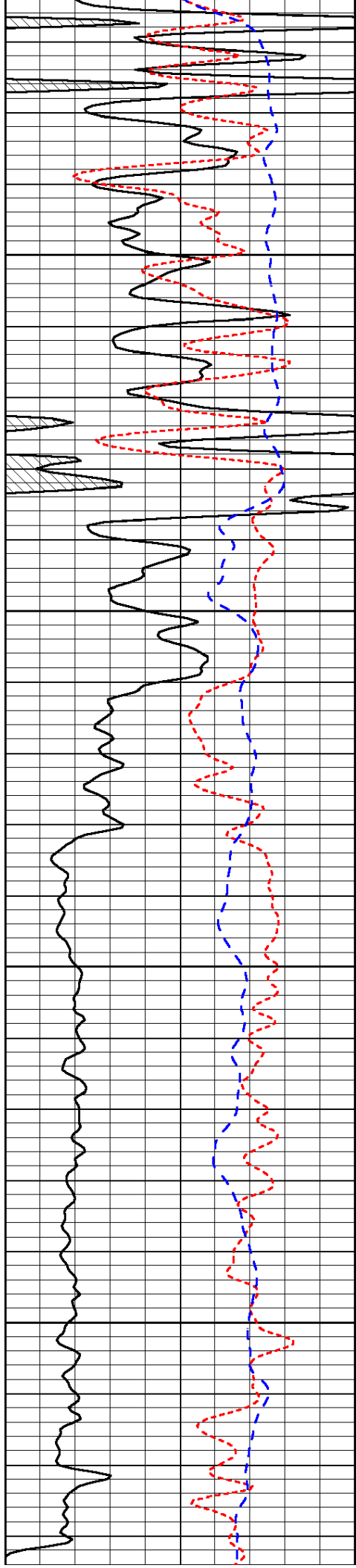
-30

-30

-30

-30

-30

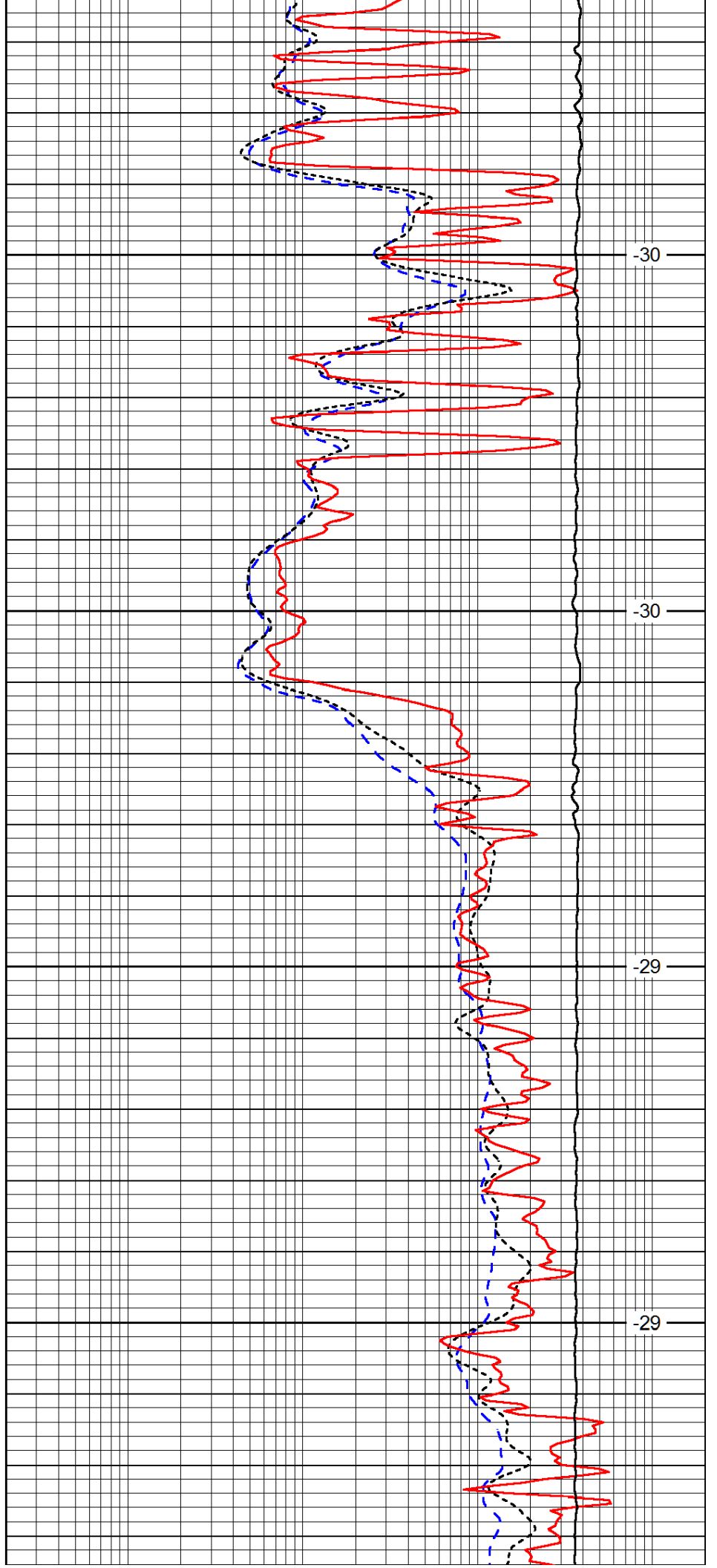


4350

4400

4450

4500



-30

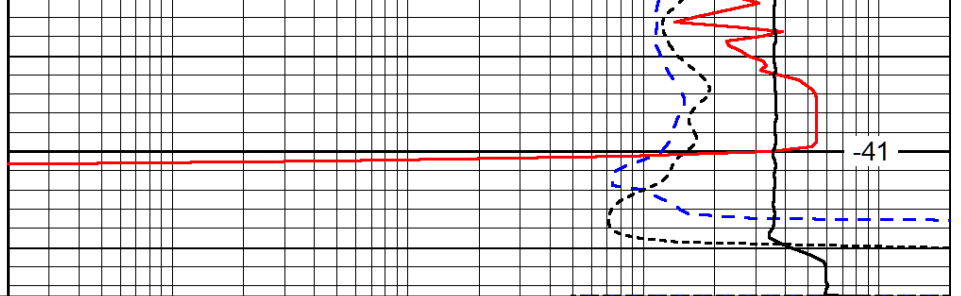
-30

-29

-29



4550



0	Gamma Ray (GAPI)	150
-160	RXO/RT	40
-200	SP (mV)	0

0.2	Deep Resistivity (Ohm-m)	2000
0.2	Medium Resistivity (Ohm-m)	2000
0.2	Shallow Resistivity (Ohm-m)	2000
10000	Line Tension (lb)	0

LSPD
(ft/min)