



Pioneer Energy Services

Microresistivity Log

API No.	15-109-21,193-00-00		
Company	Lario Oil & Gas Company		
Well	Rippetoe No.2-36		
Field			
County	Logan	State	Kansas
Location	1650' FNL & 2310' FWL		
Sec:	36	Twp:	14S Rge: 32W
Other Services	CNL/CDL DIL		

Permanent Datum	Ground Level	Elevation	2721
Log Measured From	Kelly Bushing	11 Ft. Above Perm. Datum	
Drilling Measured From	Kelly Bushing		
Date	8/16/2013		
Run Number	Two		
Depth Driller	4560		
Depth Logger	4560		
Bottom Logged Interval	4559		
Top Log Interval	3300		
Casing Driller	8.625 @ 222		
Casing Logger	222		
Bit Size	7.875		
Type Fluid in Hole	Chemical		
Salinity,ppm CL	5,000		
Density / Viscosity	9.3	51	
pH / Fluid Loss	9.5	9.6	
Source of Sample	Flowline		
Rm @ Meas. Temp	.54	@	70
Rmf @ Meas. Temp	.41	@	70
Rmc @ Meas. Temp	.73	@	70
Source of Rmf / Rmc	Charts		
Rm @ BHT	.31	@	122
Operating Rig Time	4 Hours		
Max Rec. Temp. F	122		
Equipment Number	17		
Location	Hays		
Recorded By	C. Desaire		
Witnessed By	Steve Davis		

<<< Fold Here >>>

All interpretations are opinions based on inferences from electrical or other measurements and we cannot and do not guarantee the accuracy or correctness of any interpretation, and we shall not, except in the case of gross or willful negligence on our part, be liable or responsible for any loss, costs, damages, or expenses incurred or sustained by anyone resulting from any interpretation made by any of our officers, agents or employees. These interpretations are also subject to our general terms and conditions set out in our current Price Schedule.

Comments

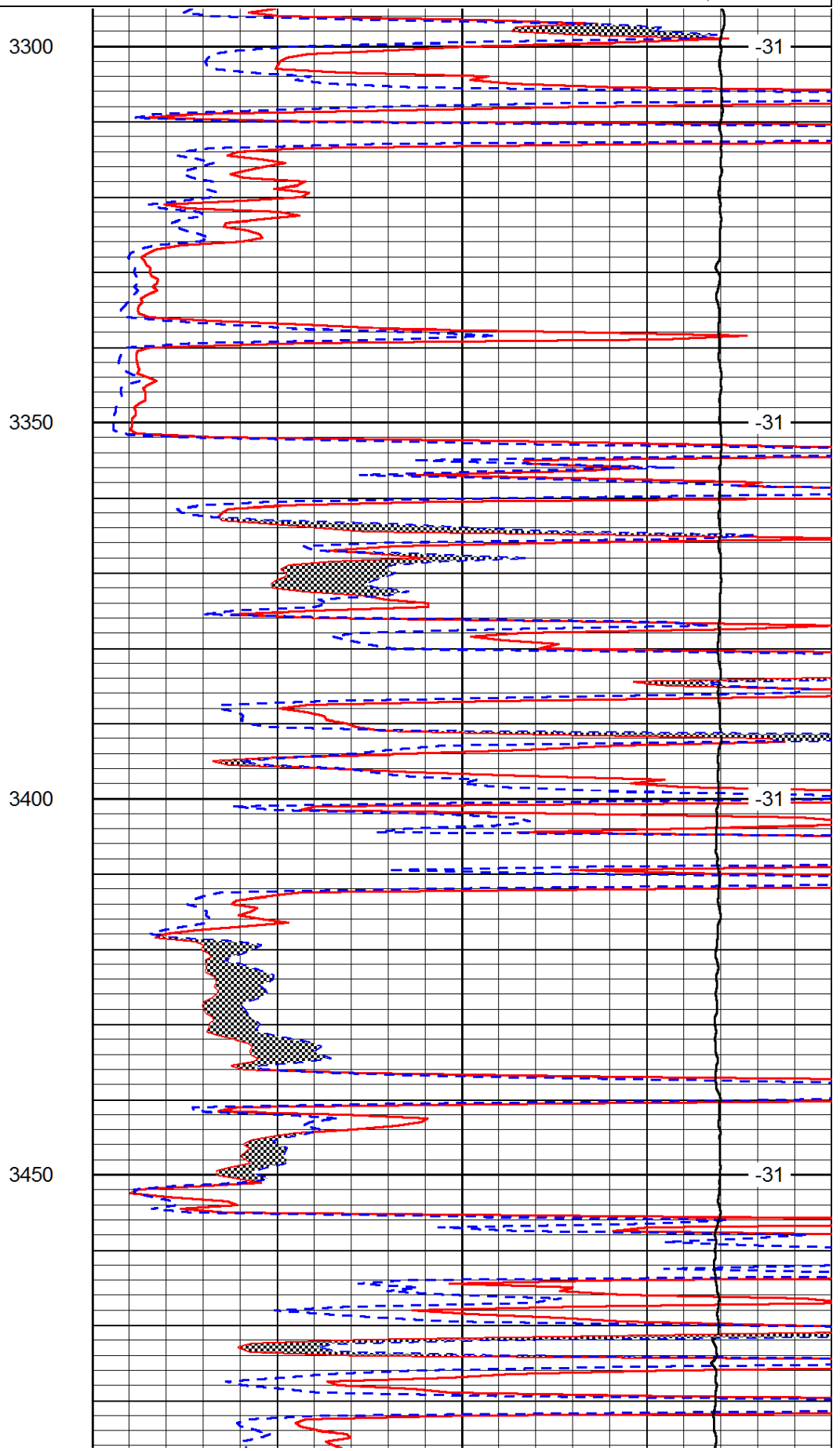
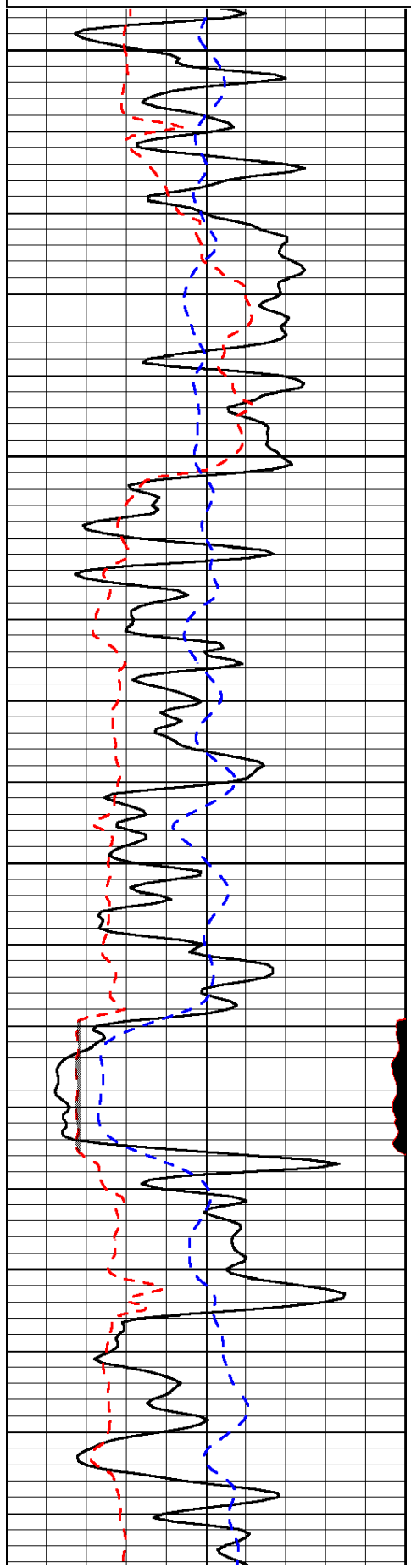
Thank you for using Log-Tech, Inc.
 (785) 625-3858

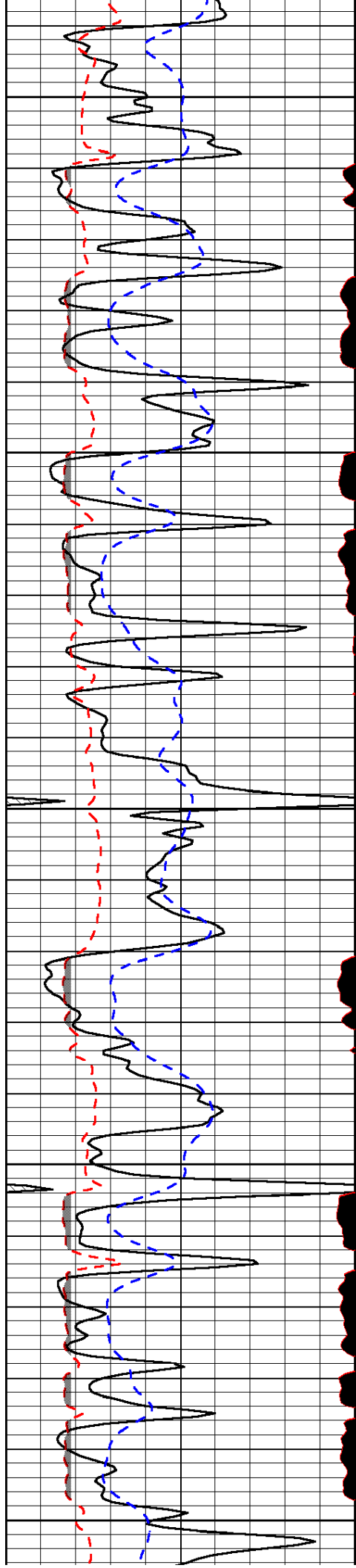
Oakley KS, S to Jayhawk Rd, 3/4 S,
 1 1/2 E thru gate with tire, 1/8 N, W Into

Database File:	lariohd.db
Dataset Pathname:	dil/larstk
Presentation Format:	micro
Dataset Creation:	Fri Aug 16 15:38:08 2013
Charted by:	Depth in Feet scaled 1:240

0	Gamma Ray (GAPI)	150
6	MCAL (in)	16
2.875	Mud Cake (in)	7.875
-200	SP (mV)	0

0	Micro Inverse 1 X 1 (Ohm-m)	40
0	Micro Normal 2" (Ohm-m)	40
10000	Line Weight (lb)	0
	LSPD (ft/min)	





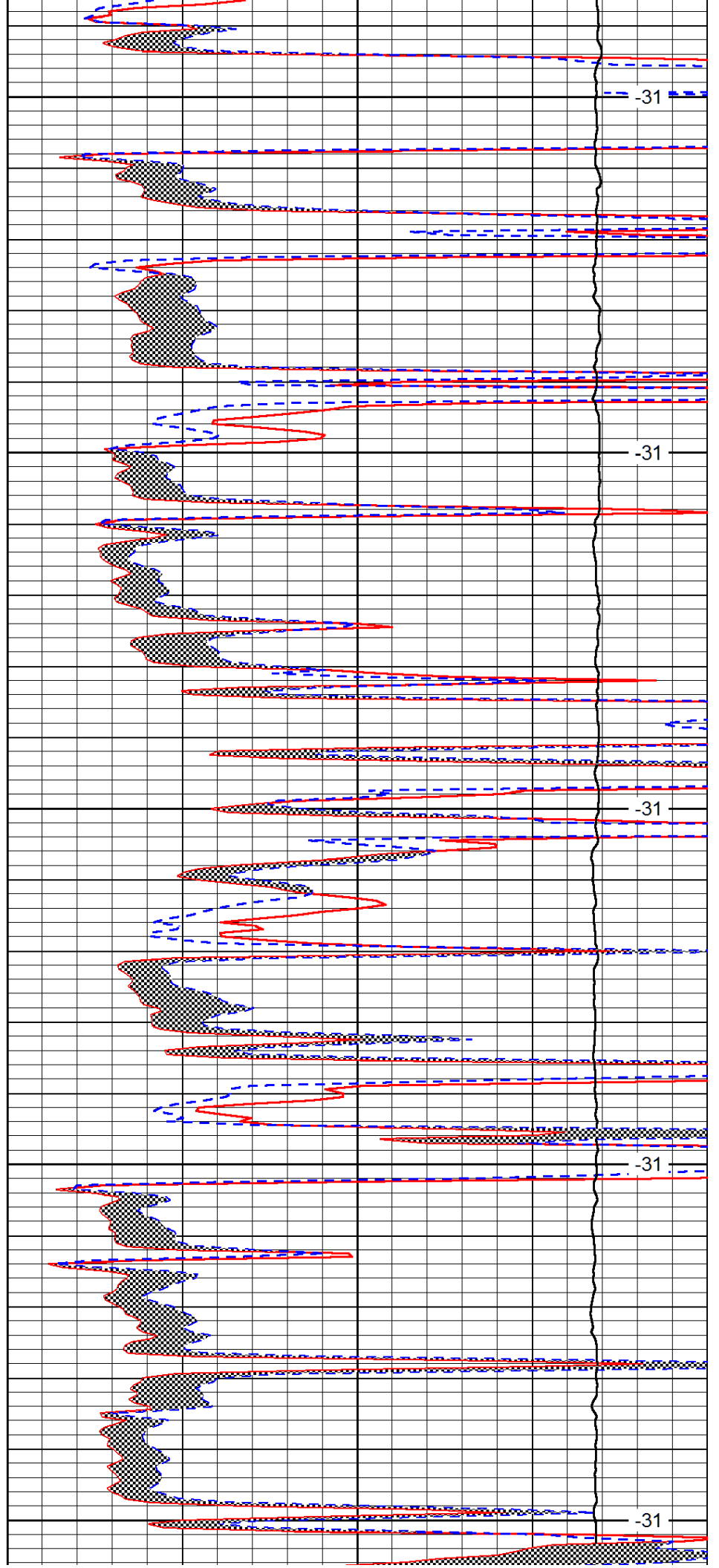
3500

3550

3600

3650

3700



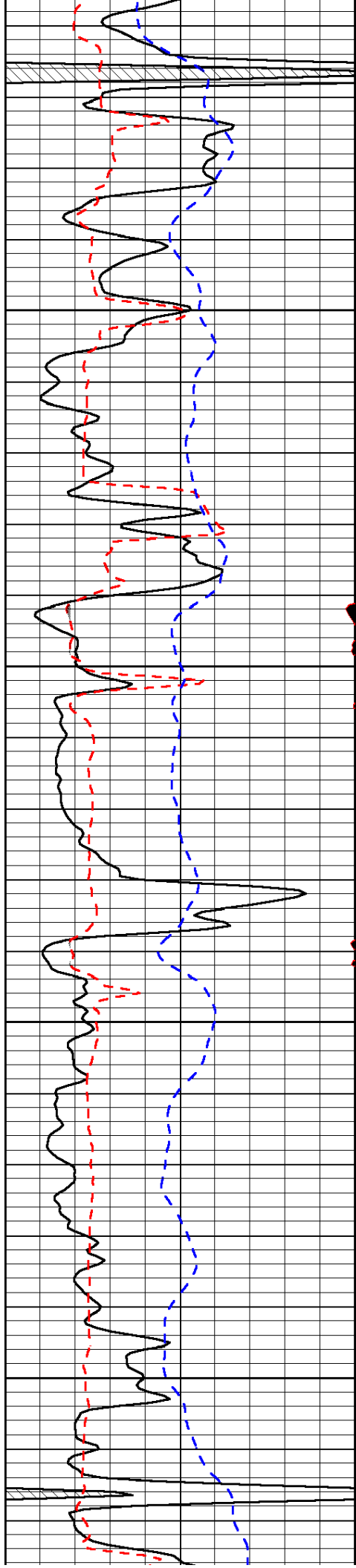
-31

-31

-31

-31

-31

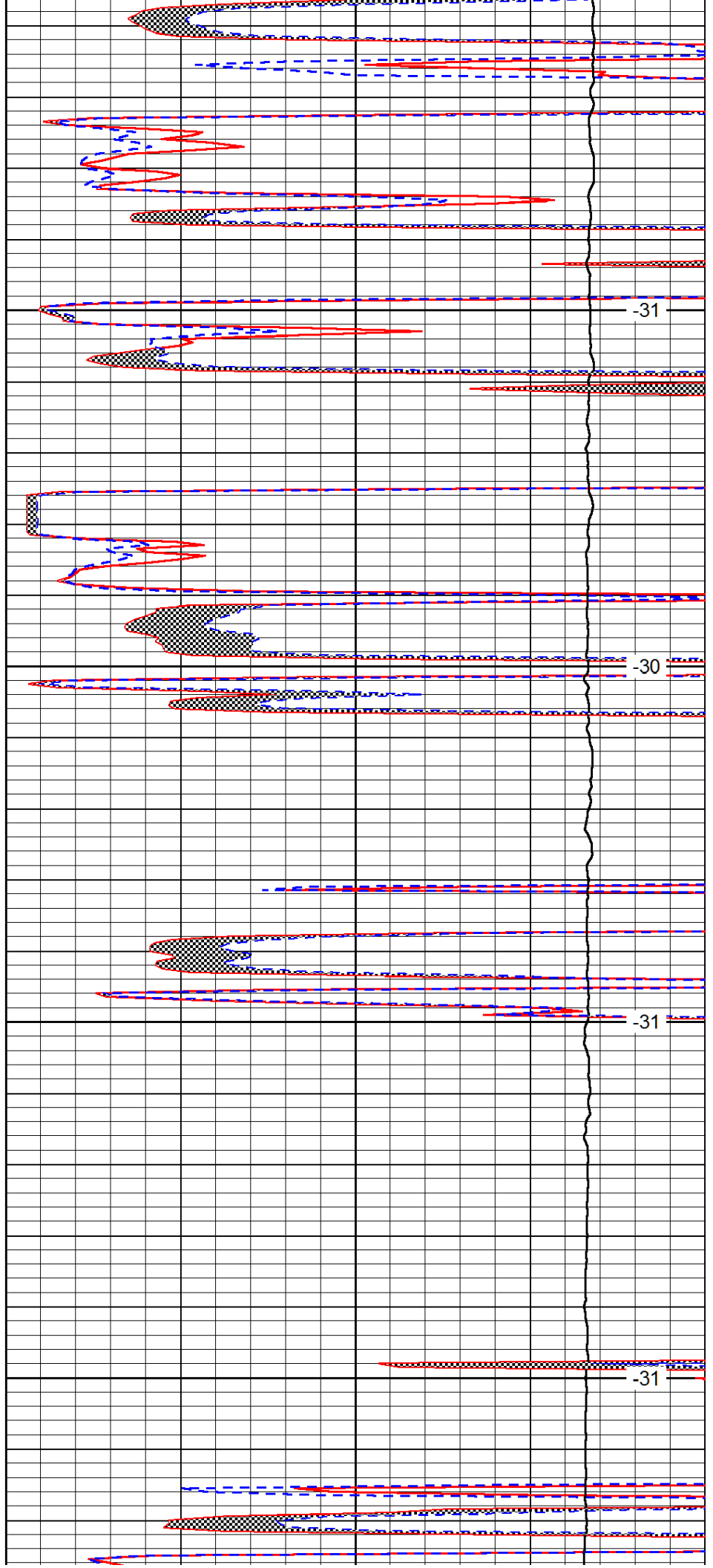


3750

3800

3850

3900

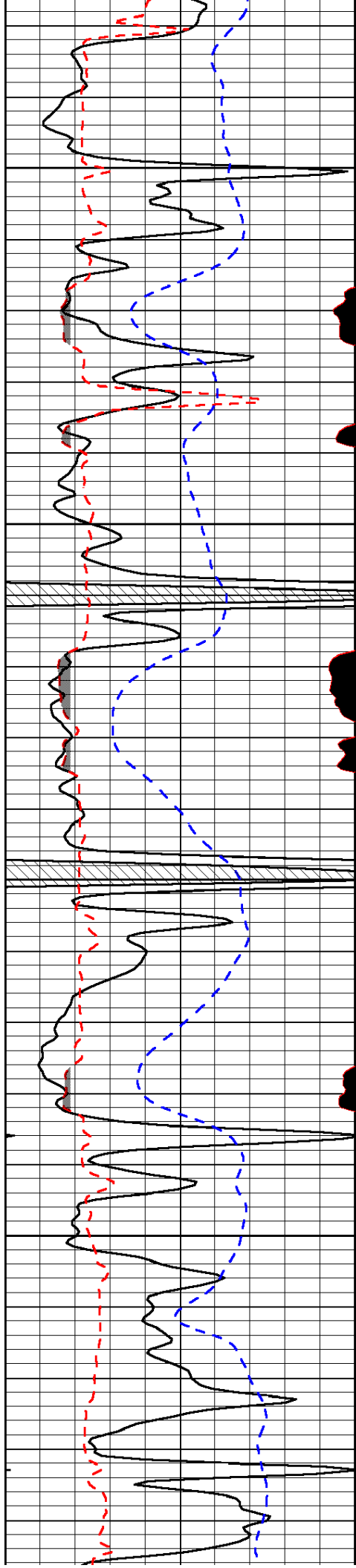


-31

-30

-31

-31

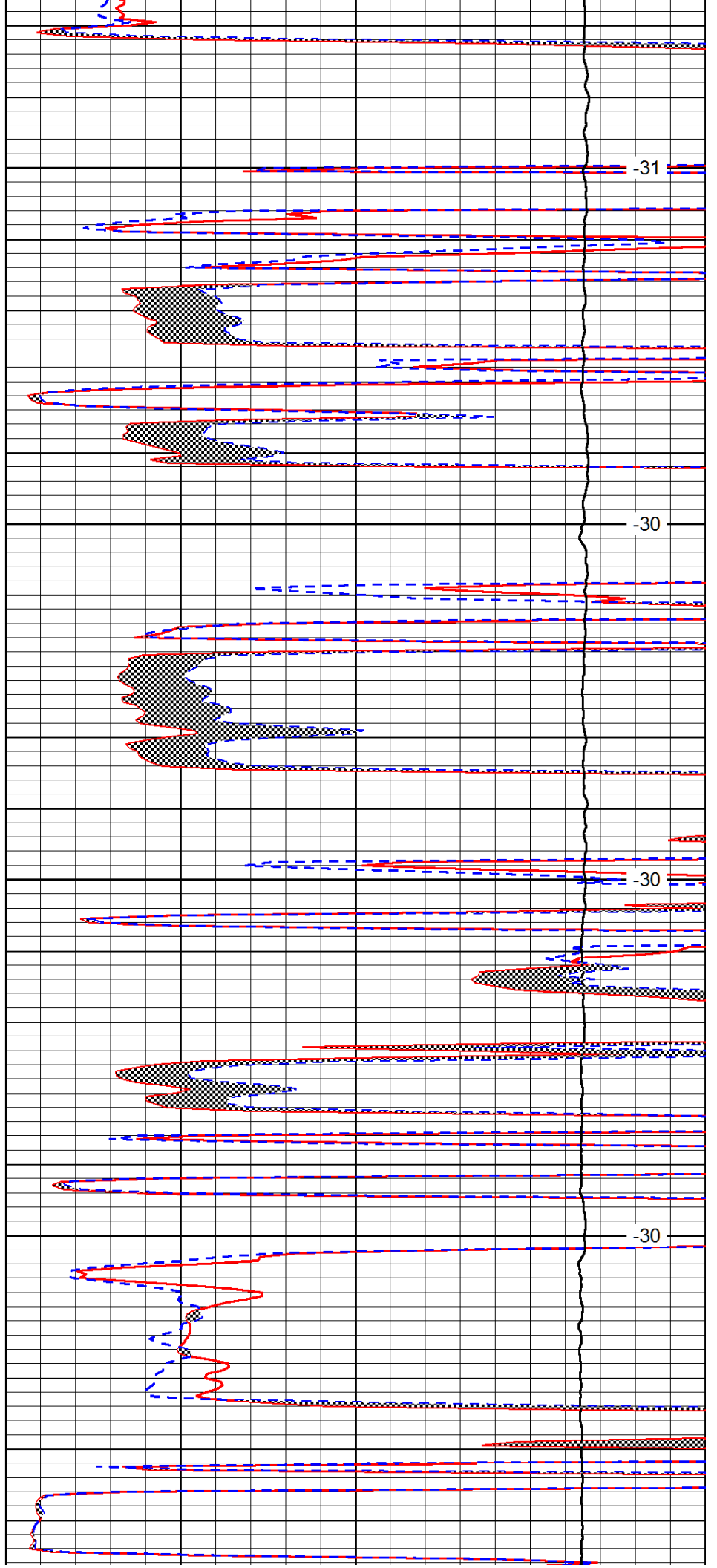


3950

4000

4050

4100

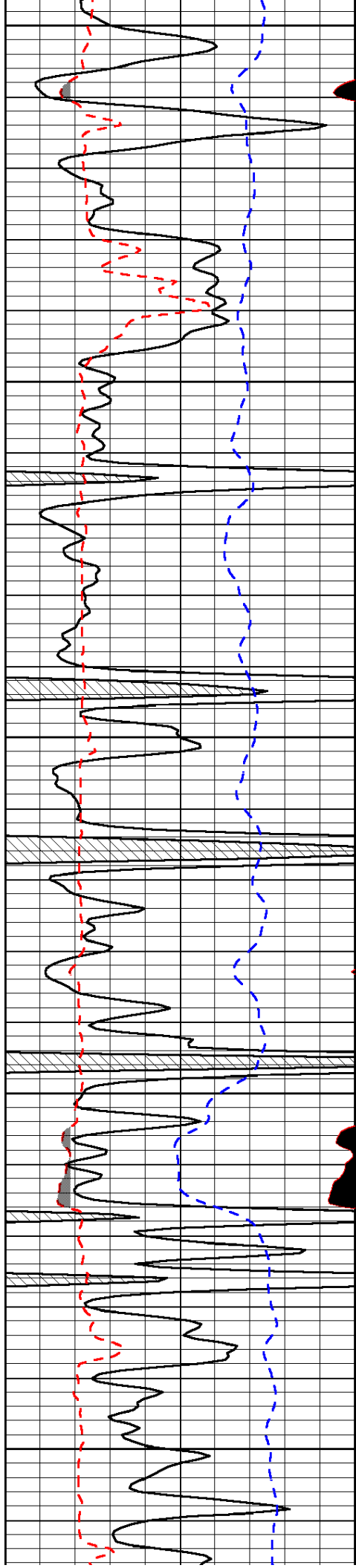


-31

-30

-30

-30



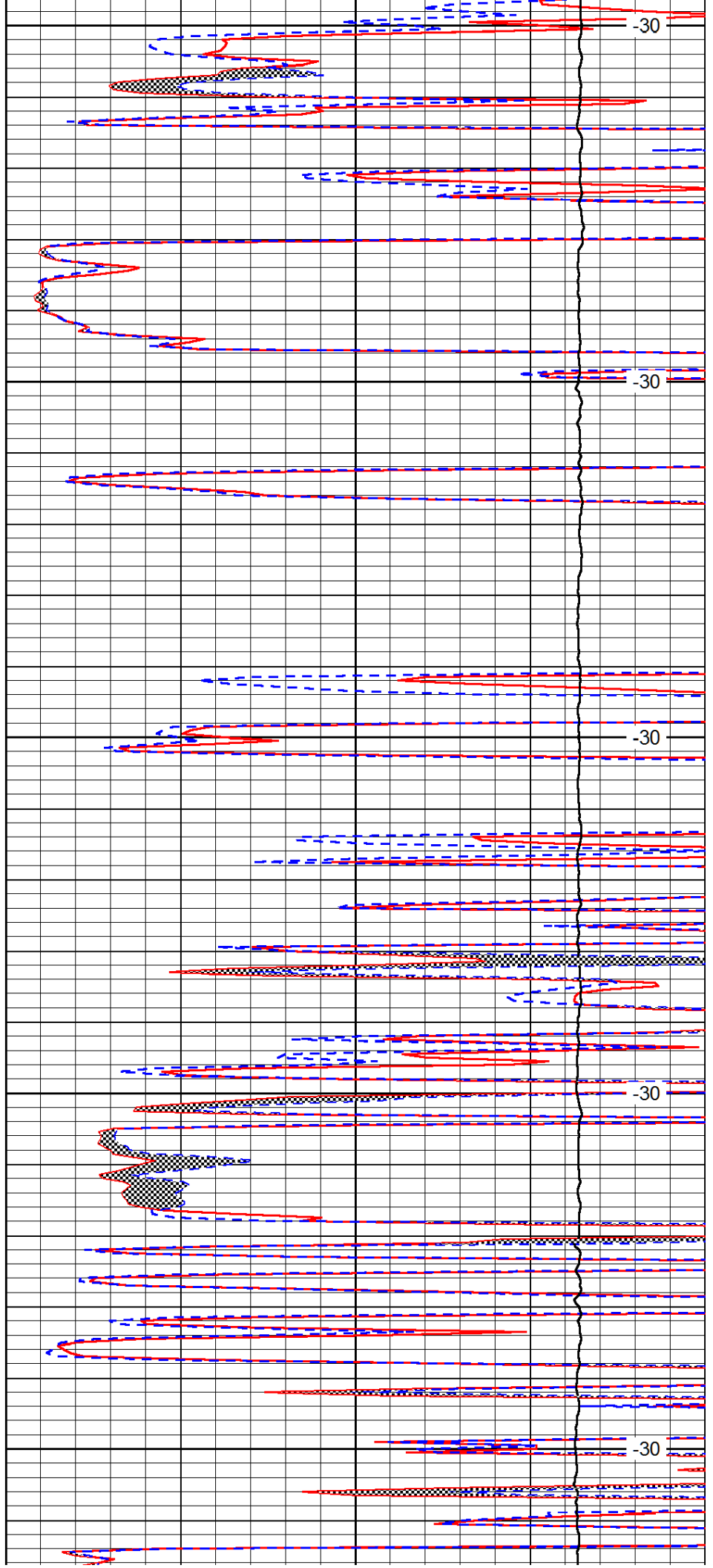
4150

4200

4250

4300

4350



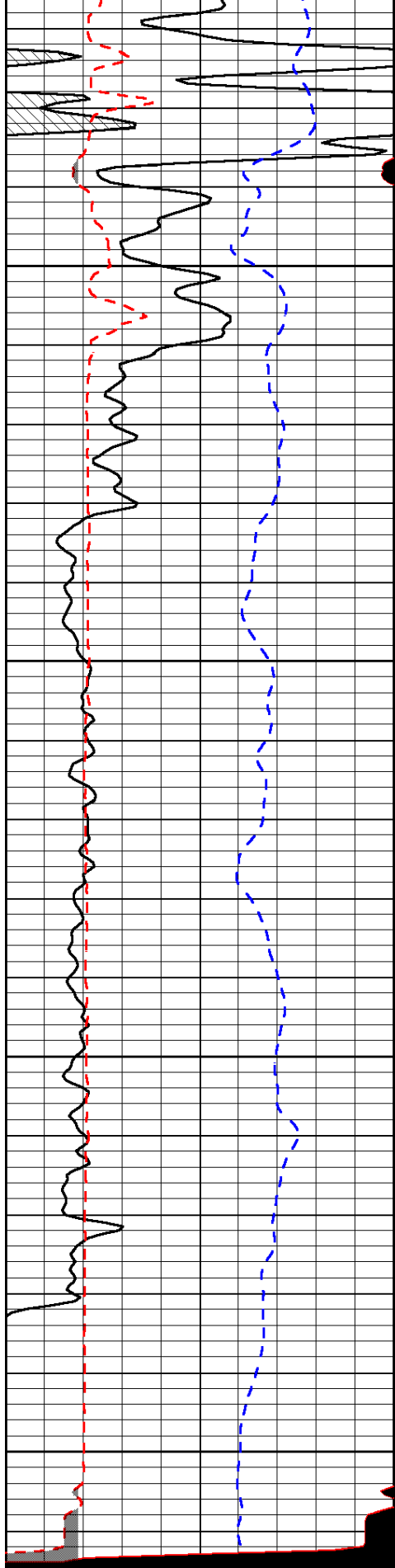
-30

-30

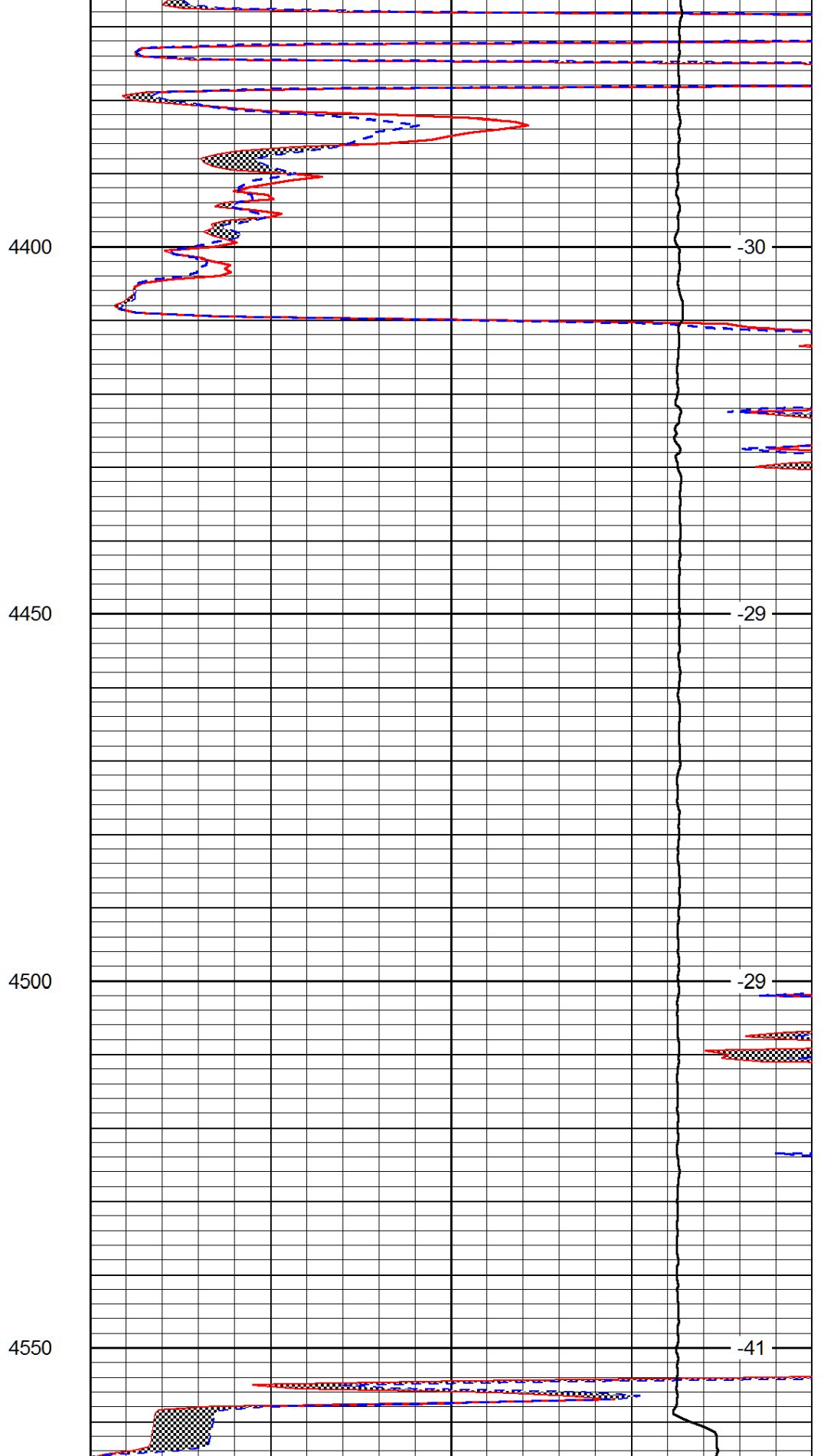
-30

-30

-30



0	Gamma Ray (GAPI)	150
6	MCAL (in)	16
2.875	Mud Cake (in)	7.875
-200	SP (mV)	0



0	Micro Inverse 1 X 1 (Ohm-m)	40
0	Micro Normal 2" (Ohm-m)	40
10000	Line Weight (lb)	0

LSPD

