



**MIDWEST SURVEYS**  
 LOGGING - PERFORATING - CONSULTING SERVICES  
 P.O. Box 68, Osawatomie, KS 66064  
 913 / 755 - 2128

**GAMMA RAY / NEUTRON / CCL**

File No. \_\_\_\_\_

Company **Kansas Resources Exploration**

Well **Joeckel No. KR-12**

Field **Paola - Rantoul**

County **Miami** State **Kansas**

Location **2145' FSL & 4125' FEL**

Location **SE-NE-NW-SW**

Sec. **13** Type **17s** Rga. **22e**

Permanent Datum **GL** Elevation **1034'**

Log Measured From **GL** Elevation **1034'**

Drilling Measured From **GL** Elevation **1034'**

Date **05-09-2014**

Run Number **One**

Depth Driller **310.0**

Depth Logger **798.8**

Bottom Logged Interval **765.8**

Top Log Interval **20.0**

Fluid Level **Full**

Type Fluid **Water**

Density / Viscosity **NA**

Salinity - PPM Cl **NA**

Max Recorded Temp **NA**

Estimated Cement Top **0.0**

Equipment No. **107** Location **Osawatimie**

Recorded By **Steve Mandisch**

Witnessed By **Brad Kramer**

BORE-HOLE RECORD		CASINGS RECORD	
RUN No.	BIT FROM TO	SIZE	WGHT
		FROM	FROM
One	9.875" 0.0 22.80	7.00"	14.0#
Two	5.875" 22.80 810.0	2.875"	6.5#
			Set
			At
			768.40

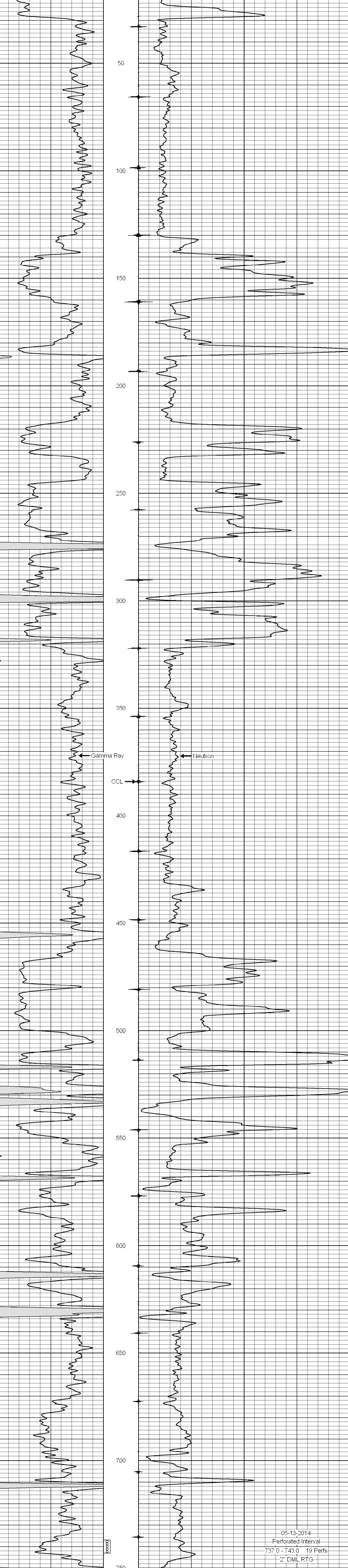
<<< Fold Here >>>

All interpretations are opinions based on inferences from electrical or other measurements and we cannot and do not guarantee the accuracy or correctness of any interpretation, and we shall not, except in the case of gross or willful negligence on our part, be liable or responsible for any loss, costs, damages, or expenses incurred or sustained by anyone resulting from any interpretation made by any of our officers, agents or employees. These interpretations are also subject to our general terms and conditions set out in our current Price Schedule.

**Comments**

Drilling Contractor :  
 Evans Energy & Development, Inc.

Database File: joeckel12kr.db  
 Dataset Pathname: pass1  
 Presentation Format: gr-n-ccl  
 Dataset Creation: Fri May 09 11:57:35 2014 by Log SCH 111116  
 Charted by: Depth in Feet scaled 1:240



05-13-2014  
 Perforated Interval  
 737.0 - 743.0 19 Perfs  
 2" DML RTG

