



MIDWEST SURVEYS
 LOGGING - PERFORATING - CONSULTING SERVICES
 P.O. Box 68, Osawatomie, KS 66064
 913 / 755 - 2128

GAMMA RAY / NEUTRON / CCL

File No. _____

Company: Vast Petroleum Of Kansas, LLC
 Well: Jewel J. Shikels No. 1-16

Field: Goodrich - Parker

County: Linn State: Kansas

Location: 4620' FSL & 660' FEL
 NE-NE

Other Services: Perforate

Sac: 25 Twp: 20S Rge: 21E

Permanent Datum: GL Elevation: NA
 Log Measured From: GL
 Drilling Measured From: GL

Elevation: K.B: NA
 D.F: NA
 G.L: NA

Date: 01-31-2014

Run Number: One

Depth Driller: 708.0

Depth Logger: 663.0

Bottom Logged Interval: 662.0

Top Log Interval: 20.0

Fluid Level: Full

Type Fluid: Water

Density / Viscosity: NA

Salinity - PPM Cl: NA

Max Recorded Temp: NA

Estimated Cement Top: 0.0

Equipment No.: 107 Location: Osawatomie

Recorded By: Steve Mandrich

Witnessed By: Bill Wilson

| BORE-HOLE RECORD | | | |
|------------------|--------|------|-------|
| RUN No. | BIT | FROM | TO |
| One | 9.875" | 0.0 | 22.4 |
| Two | 5.625" | 22.4 | 708.0 |

| CASING RECORD | | | |
|---------------|--------|------|-------|
| SIZE | WGT. | FROM | TO |
| 8.625" | 22.0 # | 0.0 | 22.4 |
| 2.875" | 6.5 # | 0.0 | 698.0 |
| Ball | Set | At | 686.0 |

<<< Fold Here >>>

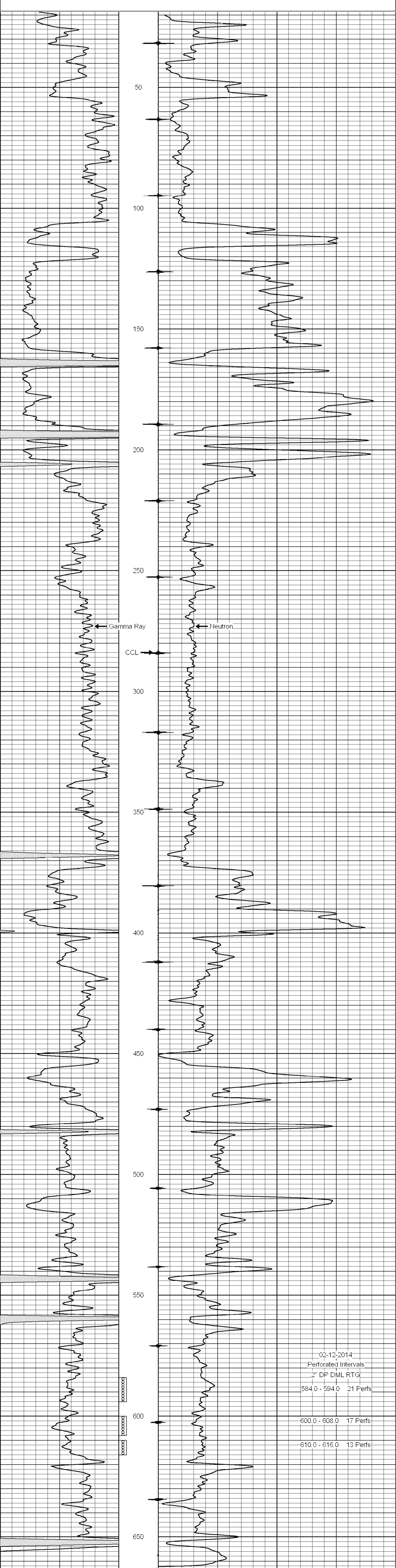
All interpretations are opinions based on inferences from electrical or other measurements and we cannot and do not guarantee the accuracy or correctness of any interpretation, and we shall not, except in the case of gross or willful negligence on our part, be liable or responsible for any loss, costs, damages, or expenses incurred or sustained by anyone resulting from any interpretation made by any of our officers, agents or employees. These interpretations are also subject to our general terms and conditions set out in our current Price Schedule.

Comments

Drilling Contractor :
 Evans Energy & Development, Inc.

Database File: shikels16i.db
 Dataset Pathname: pass1
 Presentation Format: gr-n-ccl
 Dataset Creation: Fri Jan 31 11:33:44 2014 by Log SCH 111116
 Charted by: Depth in Feet scaled 1:240

| | | | | | | |
|-----|-----------------|-----|----------|----|---------------|------|
| 0 | Gamma Ray (cps) | 150 | -1 CCL 1 | 10 | Neutron (cps) | 2100 |
| 150 | Gamma Ray (cps) | 300 | | | | |



02-12-2014
 Perforated Intervals
 2" DP DML RTG
 584.0 - 594.0 21 Perfs
 600.0 - 608.0 17 Perfs
 610.0 - 616.0 13 Perfs

| | | | | | | |
|-----|-----------------|-----|----------|----|---------------|------|
| 0 | Gamma Ray (cps) | 150 | -1 CCL 1 | 10 | Neutron (cps) | 2100 |
| 150 | Gamma Ray (cps) | 300 | | | | |