



**MIDWEST SURVEYS**  
 LOGGING - PERFORATING - CONSULTING SERVICES  
 P.O. Box 66, Oskawatomie, KS 66064  
 913.735.2128

**GAMMA RAY / NEUTRON / CCL**

File No.

Company: **Altavista Energy, Inc.**  
 Well: **Johnson No. A1-42**  
 Field: **Baldwin**  
 County: **Douglas** State: **Kansas**

Location: **3795' FSL & 4785' FEL**  
**NE-NW-SW-NW**

Other Services: **Perforate**

Sec. 1  
 Permanent Datum: **GL**  
 Log Measured From: **GL**  
 Drilling Measured From: **GL**

Elevation: **KB NA**  
**DF NA**  
**GL NA**

Date: **03-11-2014**

Run Number: **One**

Depth Driller: **920.0**

Depth Logger: **852.8**

Bottom Logged Interval: **851.8**

Top Log Interval: **20.0**

Fluid Level: **Full**

Type Fluid: **Water**  
 Density / Viscosity: **NA**  
 Salinity - PPM Cl: **NA**  
 Max Recorded Temp: **NA**  
 Estimated Cement Top: **0.0**  
 Equipment No.: **107** Operator: **Oswatimie**  
 Recorded By: **Steve Mindich**  
 Witnessed By: **Doug Evans**

BOREHOLE RECORD			
R/N	BIT	FROM	TO
One	9.875"	0.0	45.0
Two	5.925"	45.0	930.0

CASINGS RECORD			
SIZE	WGT.	FROM	TO
7.00"	17.0 #	0.0	45.0
2.875"	6.5 #	0.0	888.25
	Set		897.70

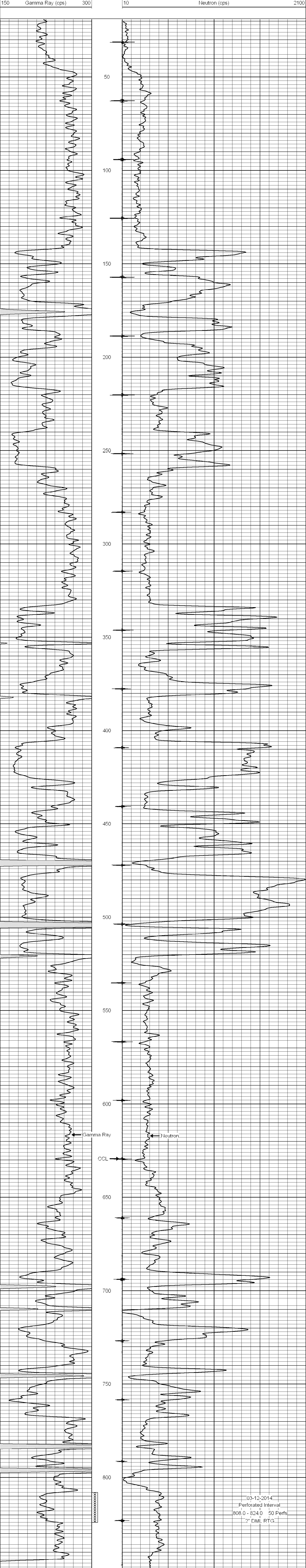
<< Fold Here >>

All interpretations are opinions based on inferences from electrical or other measurements and we cannot and do not guarantee the accuracy or correctness of any interpretation, and we shall not, except in the case of gross or willful negligence on our part, be liable or responsible for any loss, costs, damages, or expenses incurred or sustained by anyone resulting from any interpretation made by any of our officers, agents or employees. These interpretations are also subject to our general terms and conditions set out in our current Price Schedule.

**Comments**

Drilling Contractor :  
**Town Oilfield Services, Inc**

Database File: johnson42ai.db  
 Dataset Pathname: pass1  
 Presentation Format: gr-n-ccl  
 Dataset Creation: Tue Mar 11 14:18:52 2014 by Log SCH 111116  
 Charted by: Depth in Feet scaled 1:240



03-12-2014  
 Perforated Interval  
 808.0 - 824.0 50 Perfs  
 2" DML RTG