

MIDWEST SURVEYS
 LOGGING - PERFORATING - CONSULTING SERVICES
 P.O. Box 68, Osawatomie, KS 66064
 913.786.2128

GAMMA RAY / NEUTRON / CCL

File No. _____

Company **D.E. Exploration, Inc.**

Well **White No. 1-3**

Field **Edgerton Southwest**

County **Johnson** State **Kansas**

Location **405' FSL & 3970' FEL**
NE-SE-SW-SW

Other Services
 Perforate

Sec. 1 Type **15S** Eye **21e**
 Permanent Datum **GL** Elevation **NA**
 Log Measured From **GL** K.B. **NA**
 Drilling Measured From **GL** D.F. **NA**
 G.L. **NA**

Date **03-11-2014**

Run Number **One**

Depth Driller **940.0**

Bottom Logged Interval **884.4**

Top Log Interval **20.0**

Fluid Level **Full**

Type Fluid **Water**

Density / Viscosity **NA**

Salinity - PPM Cl **NA**

Max Recorded Temp **NA**

Estimated Cement Top **0.0**

Equipment No. **107** Location **Osawatomie**

Recorded By **Steve Winkfish**

Witnessed By **Doug Evans**

BORE-HOLE RECORD		CASING RECORD				
NO.	BIT	TO	SIZE	WGT.	FROM	TO
One	9.875"	0.0	7.00"	17.0 #	0.0	22.0
Two	5.625"	22.0	940.0	2.875"	6.5 #	921.0
				Set	At	890.0

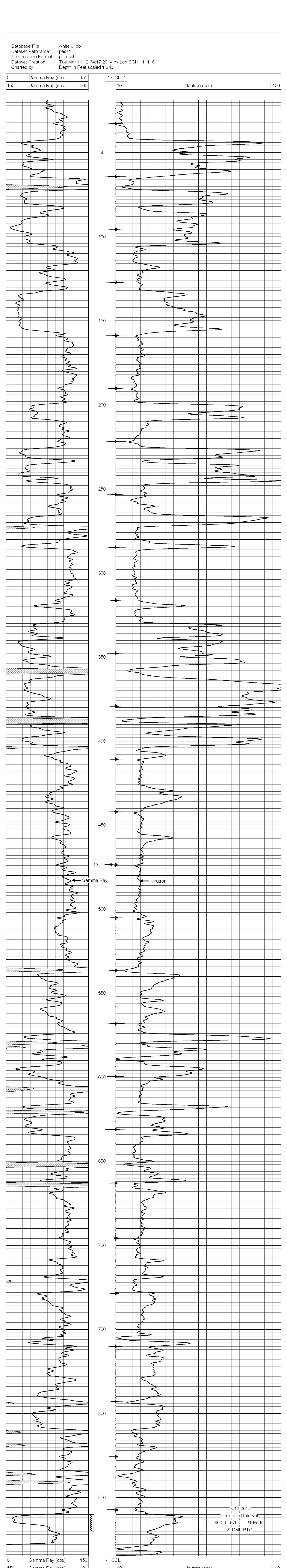
<<< Fold Here >>>

All interpretations are opinions based on inferences from electrical or other measurements and we cannot and do not guarantee the accuracy or correctness of any interpretation, and we shall not, except in the case of gross or willful negligence on our part, be liable or responsible for any loss, costs, damages, or expenses incurred or sustained by anyone resulting from any interpretation made by any of our officers, agents or employees. These interpretations are also subject to our general terms and conditions set out in our current Price Schedule.

Comments

Drilling Contractor :
 Town Oilfield Services, Inc

Database File: white 3i.db
 Dataset Pathname: pass1
 Presentation Format: gr-n-ccl
 Dataset Creation: Tue Mar 11 12:34:17 2014 by Log SCH 111116
 Charted by: Depth in Feet scaled 1:240



03-12-2014
 Perforated Interval
 860.0 - 870.0 31 Perfs
 2" DML RTG