



Pioneer Energy Services

Radiation Guard Log

15-165-22048-00-00

API No.

Company **Castle Resources, Inc.**

Well **Stremel Unit # 1**

Field **Wildcat**

County **Rush** State **Kansas**

Location **165' FSL & 2580' FWL**

Sec: **27** Twp: **16 S** Rge: **19 W**

Other Services
NONE

Permanent Datum **Ground Level** Elevation **2032**

Log Measured From **Kelly Bushing** 5 Ft. Above Perm. Datum

Drilling Measured From **Kelly Bushing**

Elevation
K.B. 2037
D.F.
G.L. 2032

Date **02-14-2014**

Run Number **One**

Depth Driller **3764**

Depth Logger **3760**

Bottom Logged Interval **3759**

Top Log Interval **200**

Casing Driller **8.625 @ 218**

Casing Logger **219**

Bit Size **7.875**

Type Fluid in Hole **Chemical**

Salinity, ppm CL **60,000**

Density / Viscosity **10.6 48**

pH / Fluid Loss **8.0 50.0**

Source of Sample **Flowline**

Rm @ Meas. Temp **0.14 @ 45**

Rmf @ Meas. Temp **0.10 @ 45**

Rmc @ Meas. Temp **0.18 @ 45**

Source of Rmf / Rmc **Charts**

Rm @ BHT **0.05 @ 116**

Operating Rig Time **2 1/2 Hours**

Max Rec. Temp. F **116**

Equipment Number **91**

Location **Hays**

Recorded By **Y. Ruiz**

Witnessed By **Jerry Green**

<<< Fold Here >>>

All interpretations are opinions based on inferences from electrical or other measurements and we cannot and do not guarantee the accuracy or correctness of any interpretation, and we shall not, except in the case of gross or willful negligence on our part, be liable or responsible for any loss, costs, damages, or expenses incurred or sustained by anyone resulting from any interpretation made by any of our officers, agents or employees. These interpretations are also subject to our general terms and conditions set out in our current Price Schedule.

Comments

Thank you for using Log-Tech, Inc.
(785) 625-3858

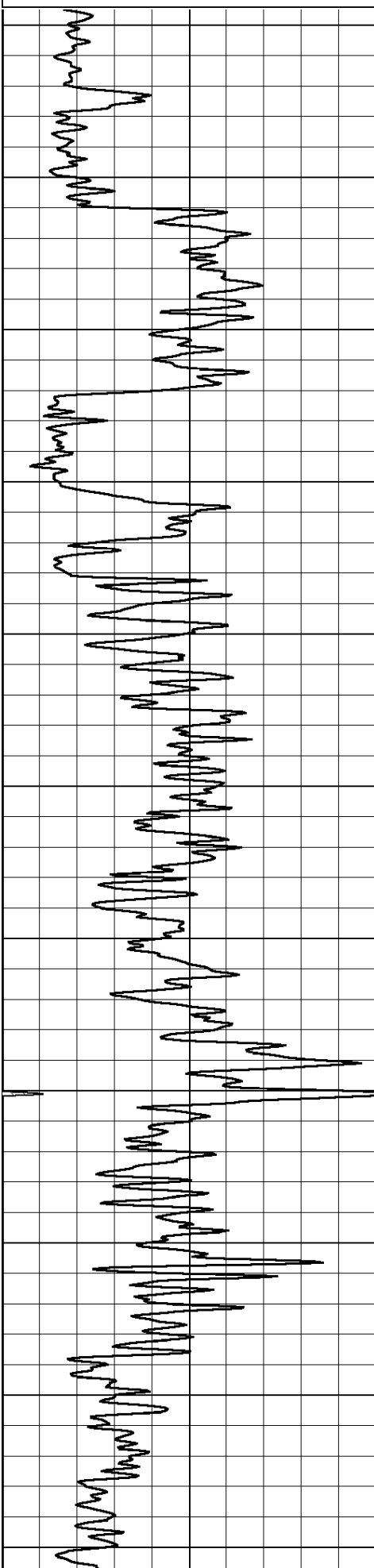
Liebenthal,
4 1/4 West to 200th, 1 South,
West into

Database File: castle_021414hd.db
Dataset Pathname: RAG/casrag
Presentation Format: rag2in
Dataset Creation: Fri Feb 14 08:26:13 2014
Charted by: Depth in Feet scaled 1:600

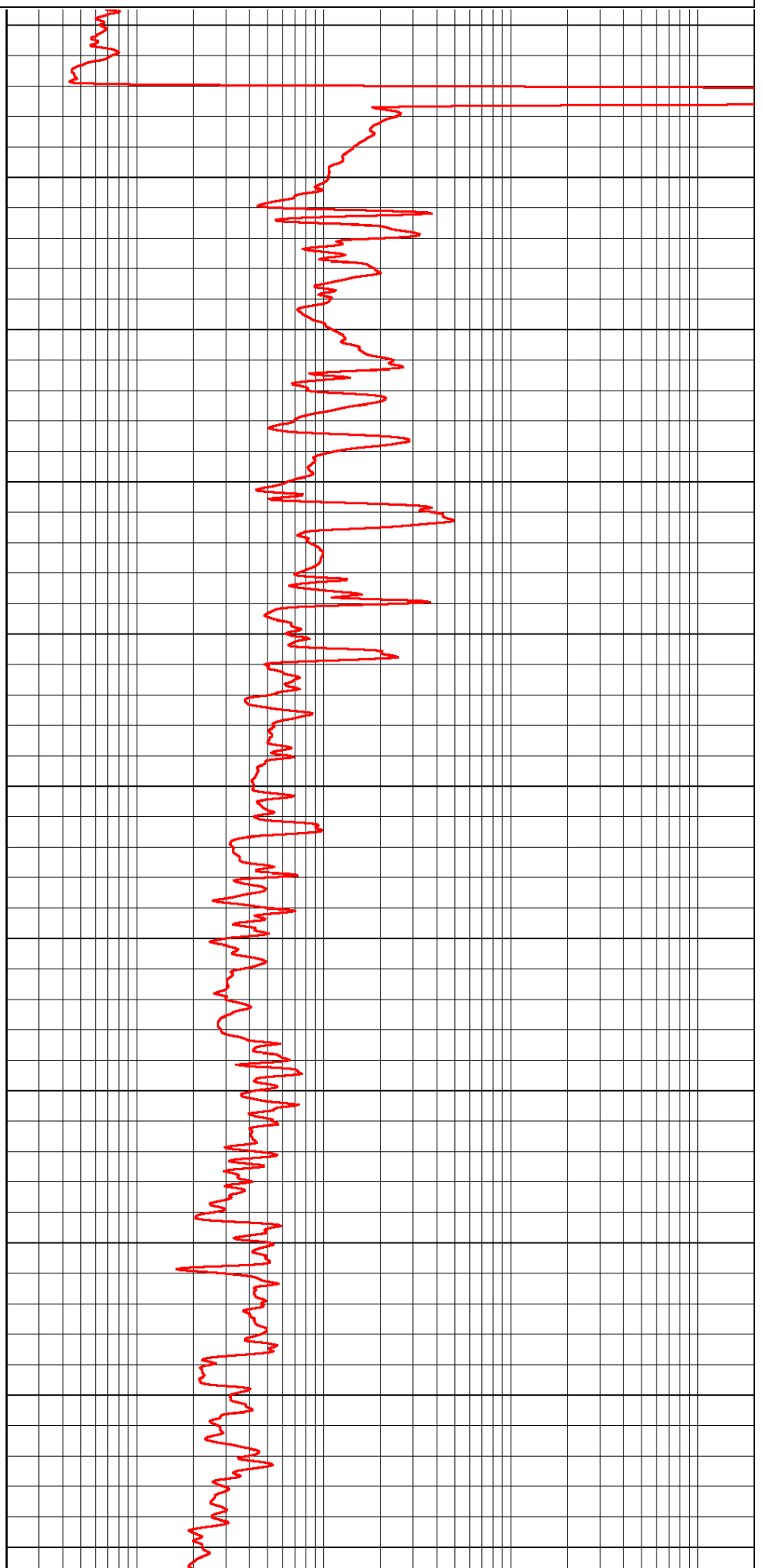
0 Gamma Ray (GAPI) 150

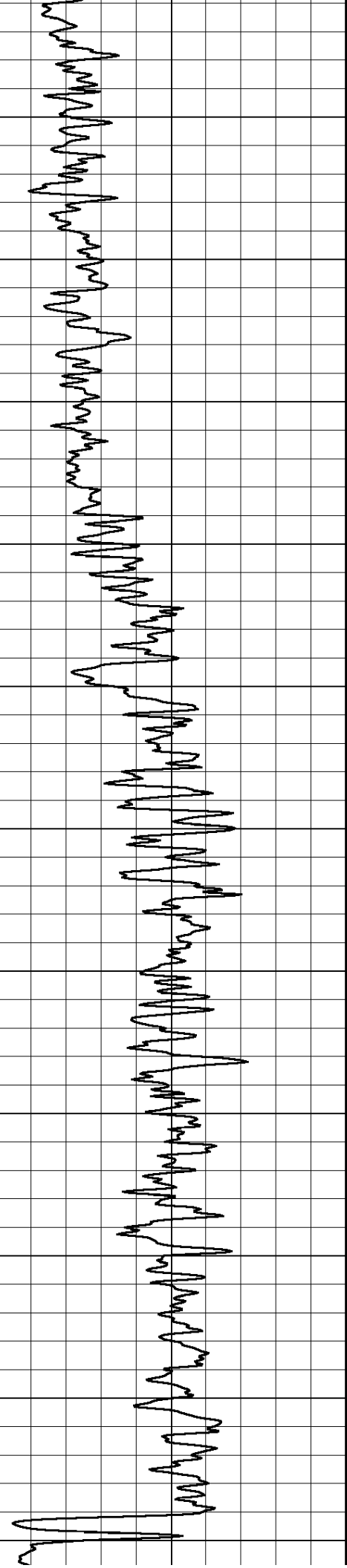
0.2 Igrd (Ohm-m)

2000



200
250
300
350
400
450
500
550
600
650
700





750

800

850

900

950

1000

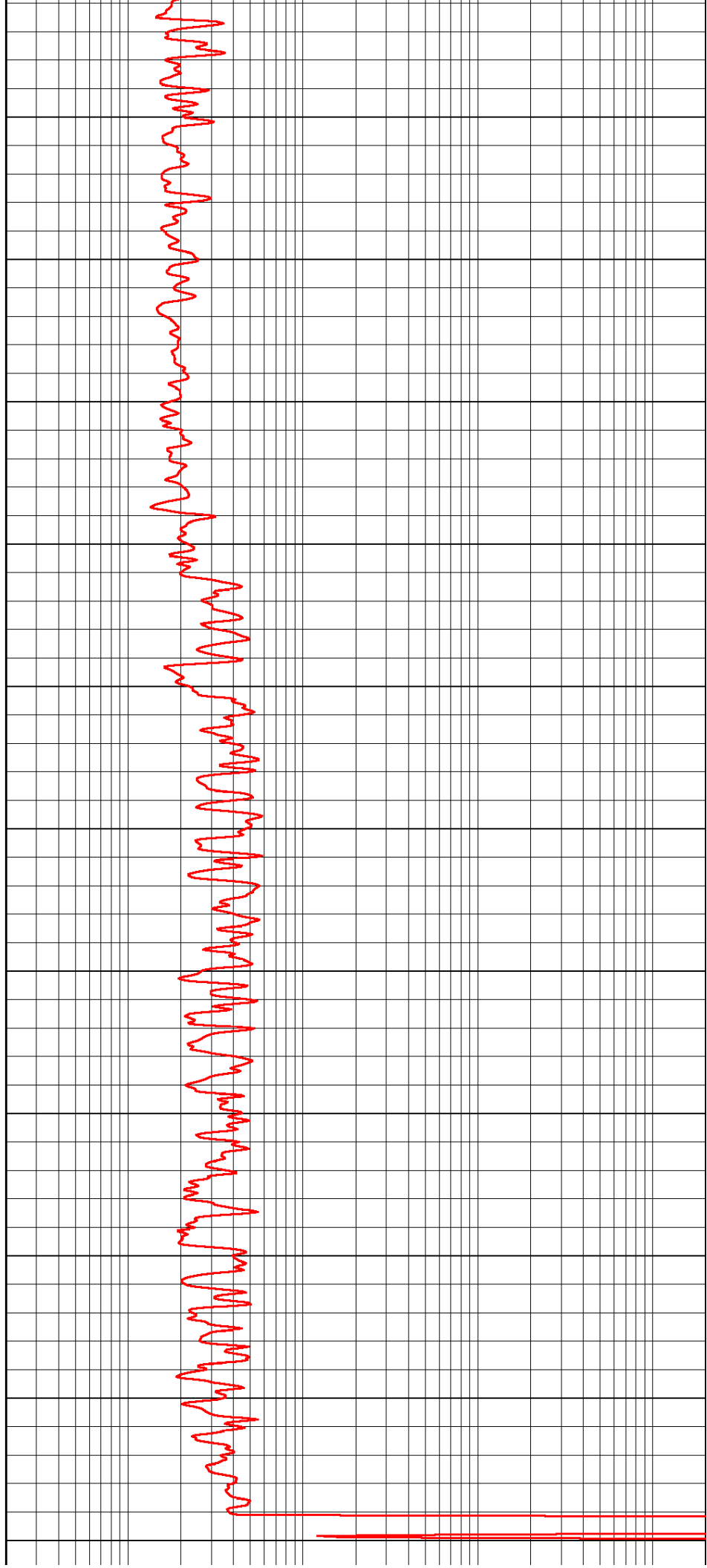
1050

1100

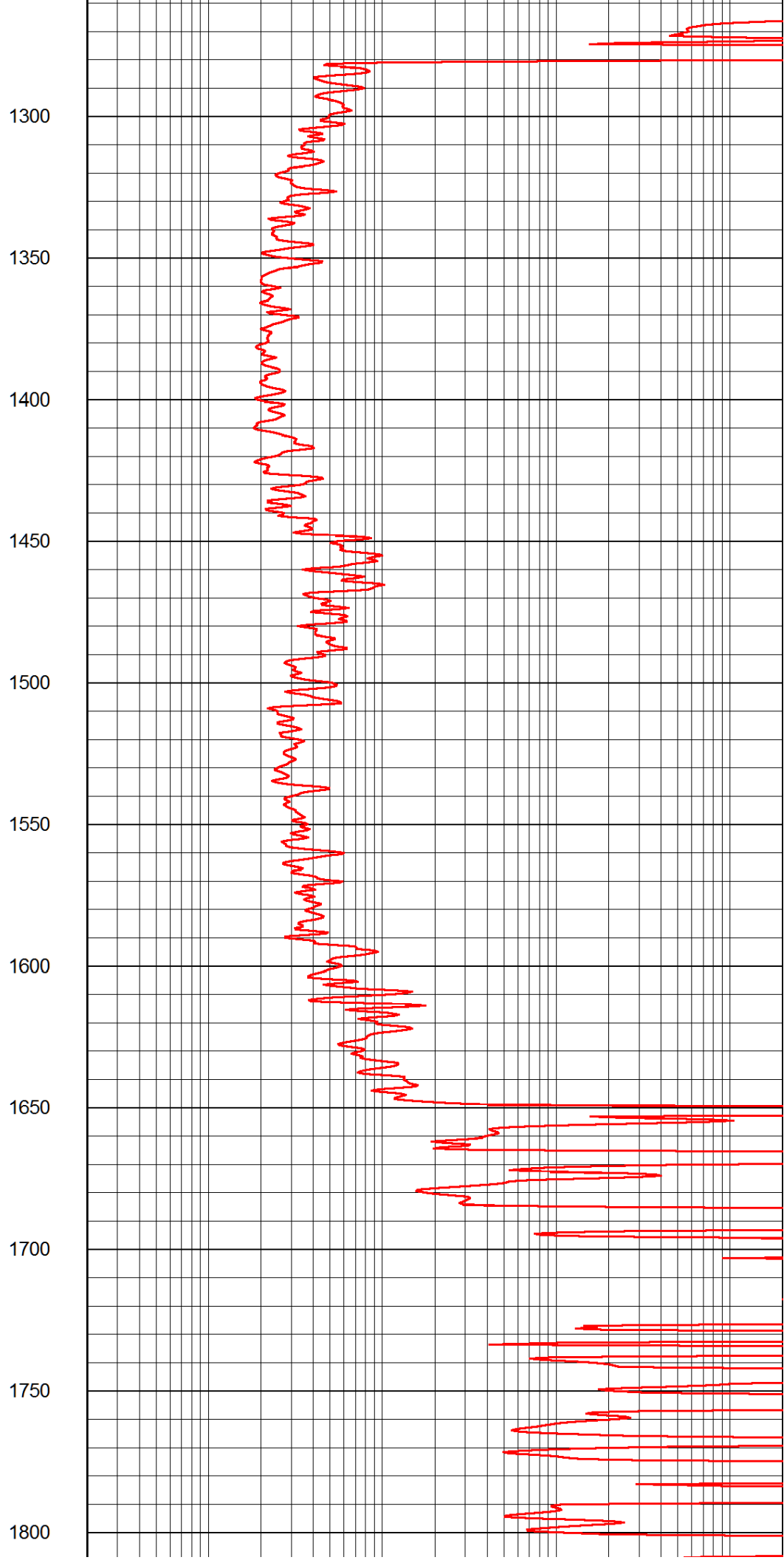
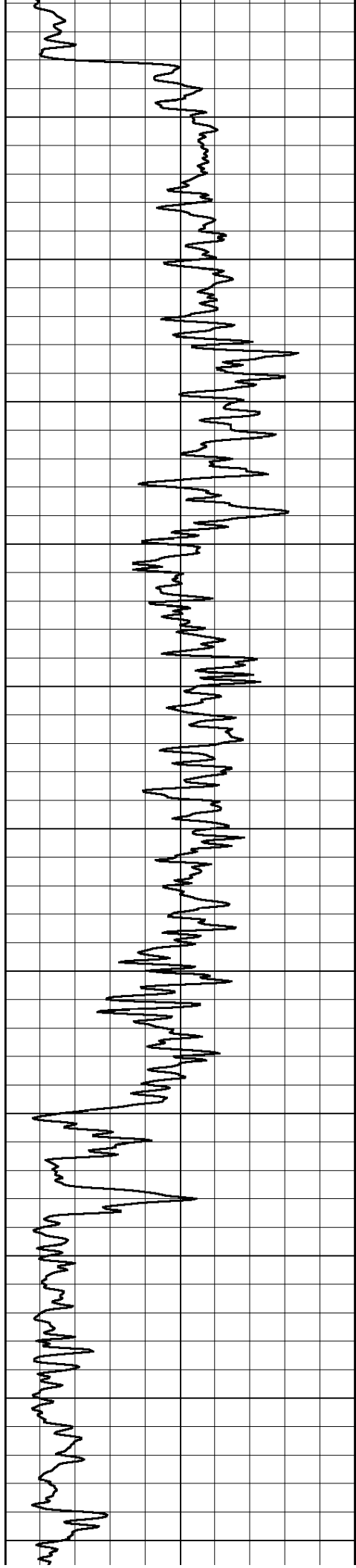
1150

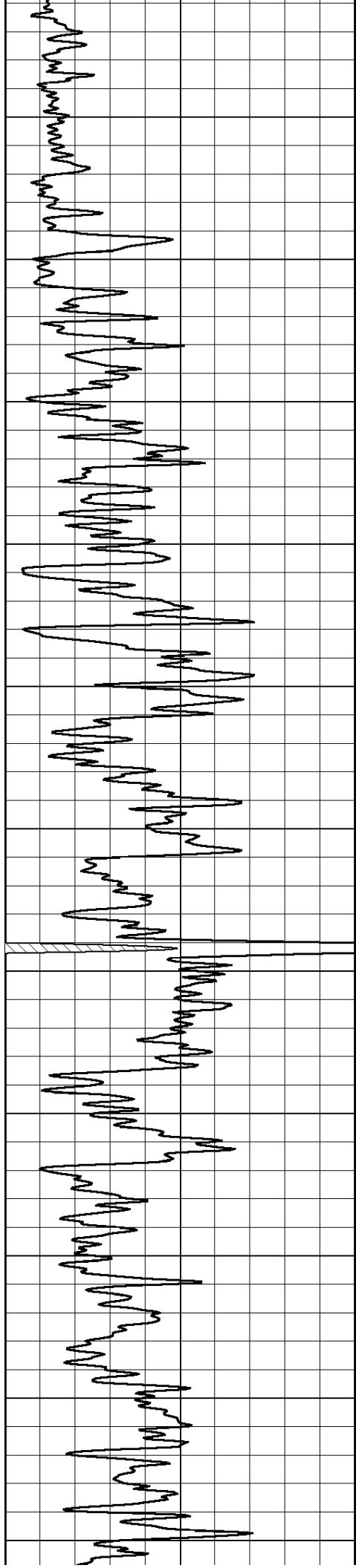
1200

1250



1250





1850

1900

1950

2000

2050

2100

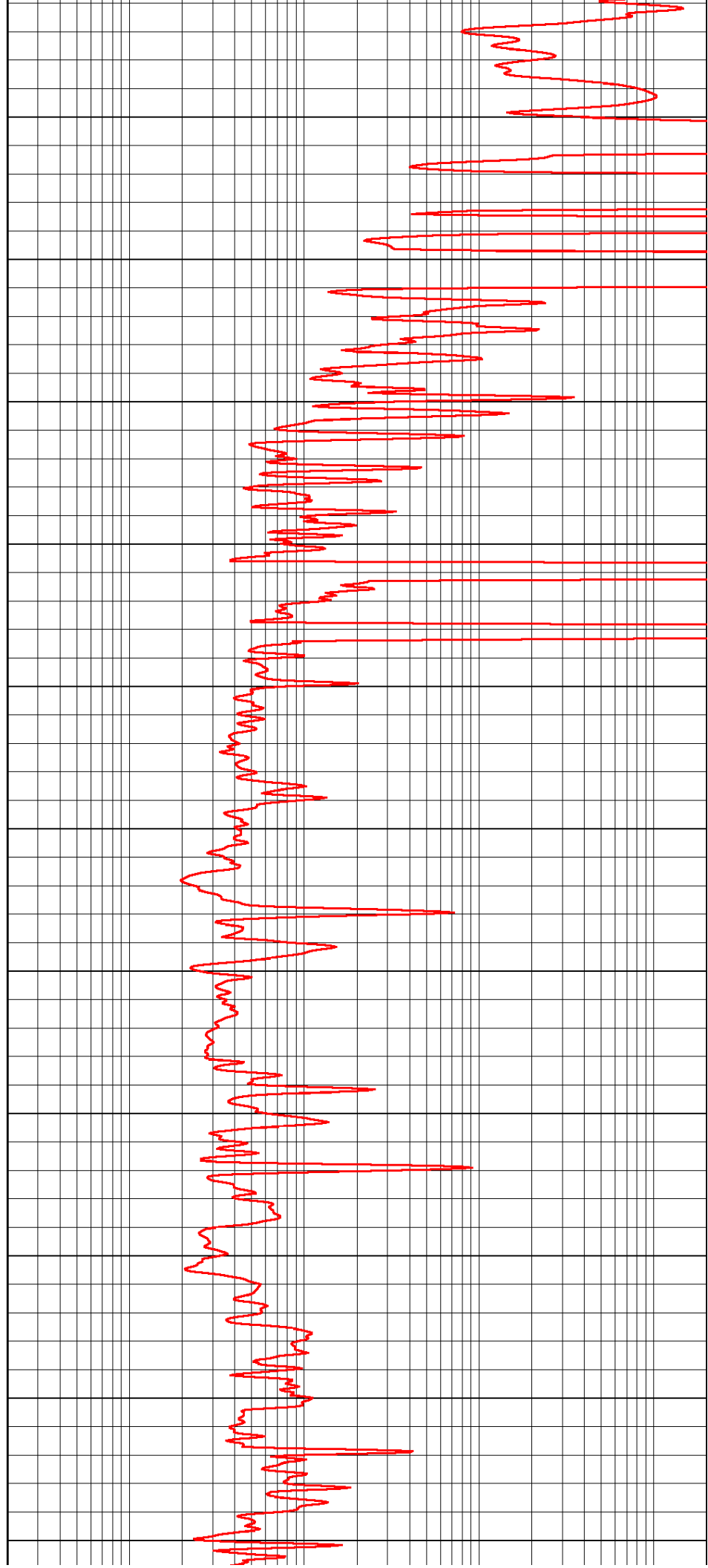
2150

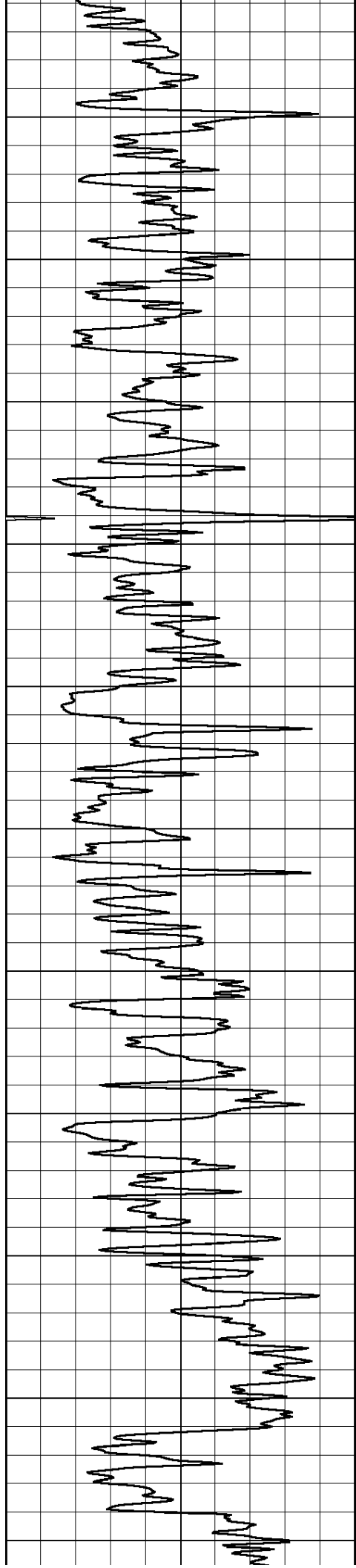
2200

2250

2300

2350





2400

2450

2500

2550

2600

2650

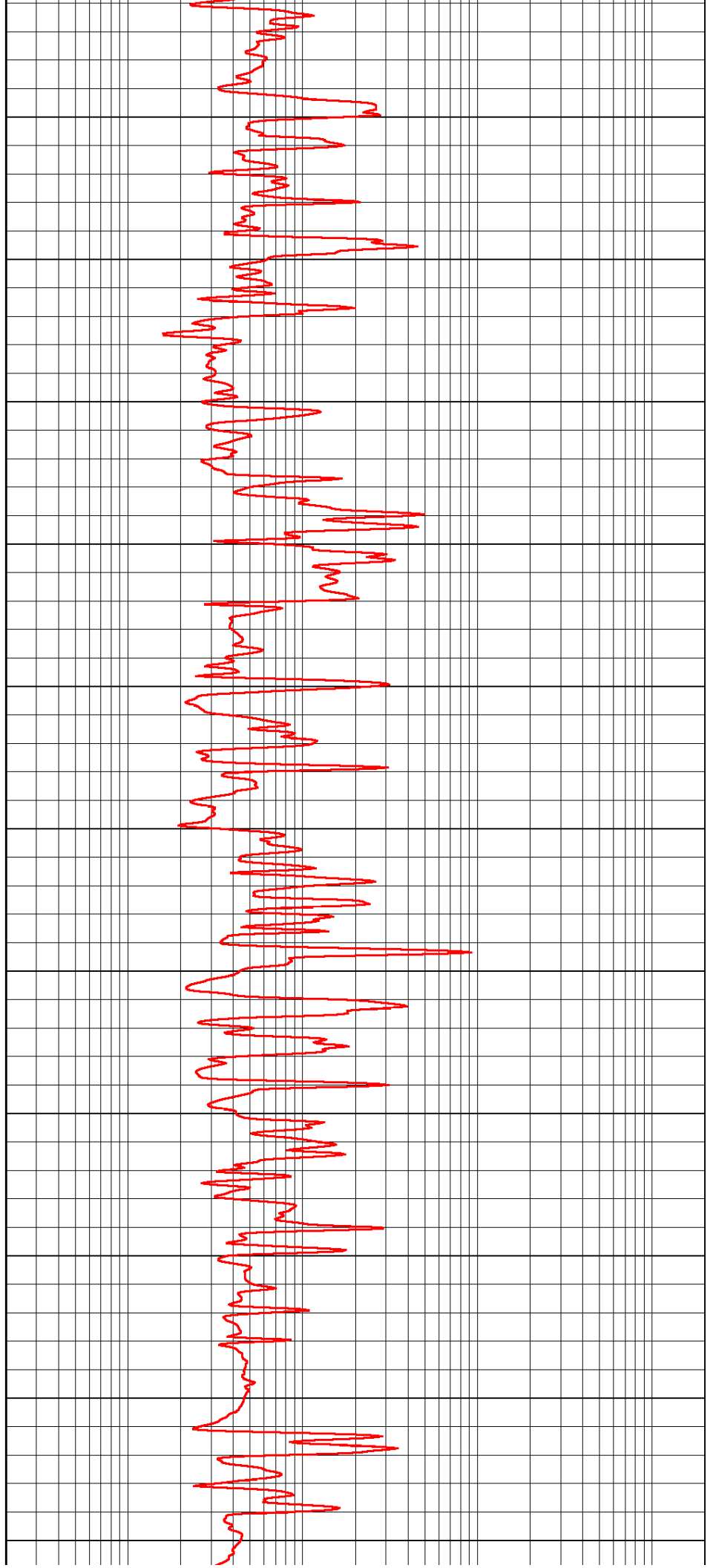
2700

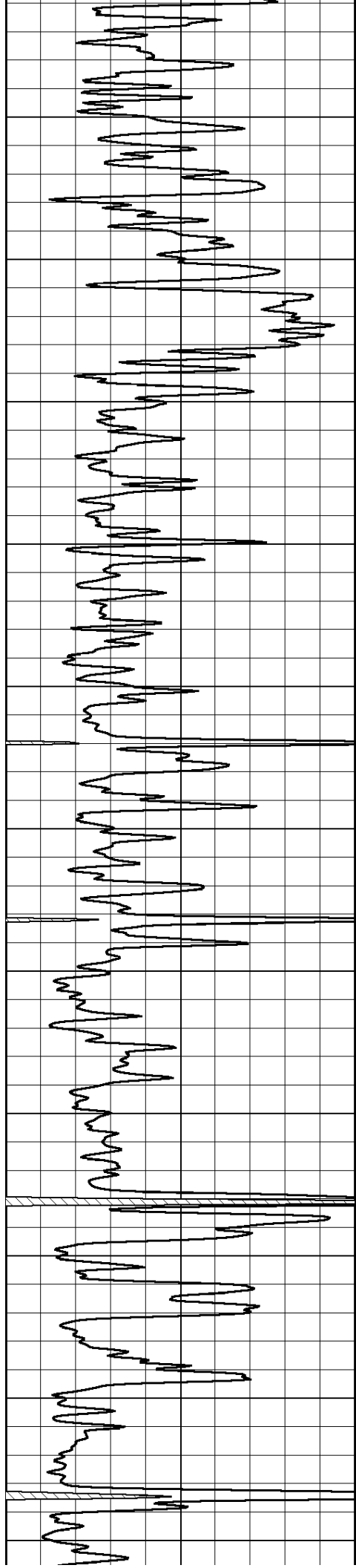
2750

2800

2850

2900





2950

3000

3050

3100

3150

3200

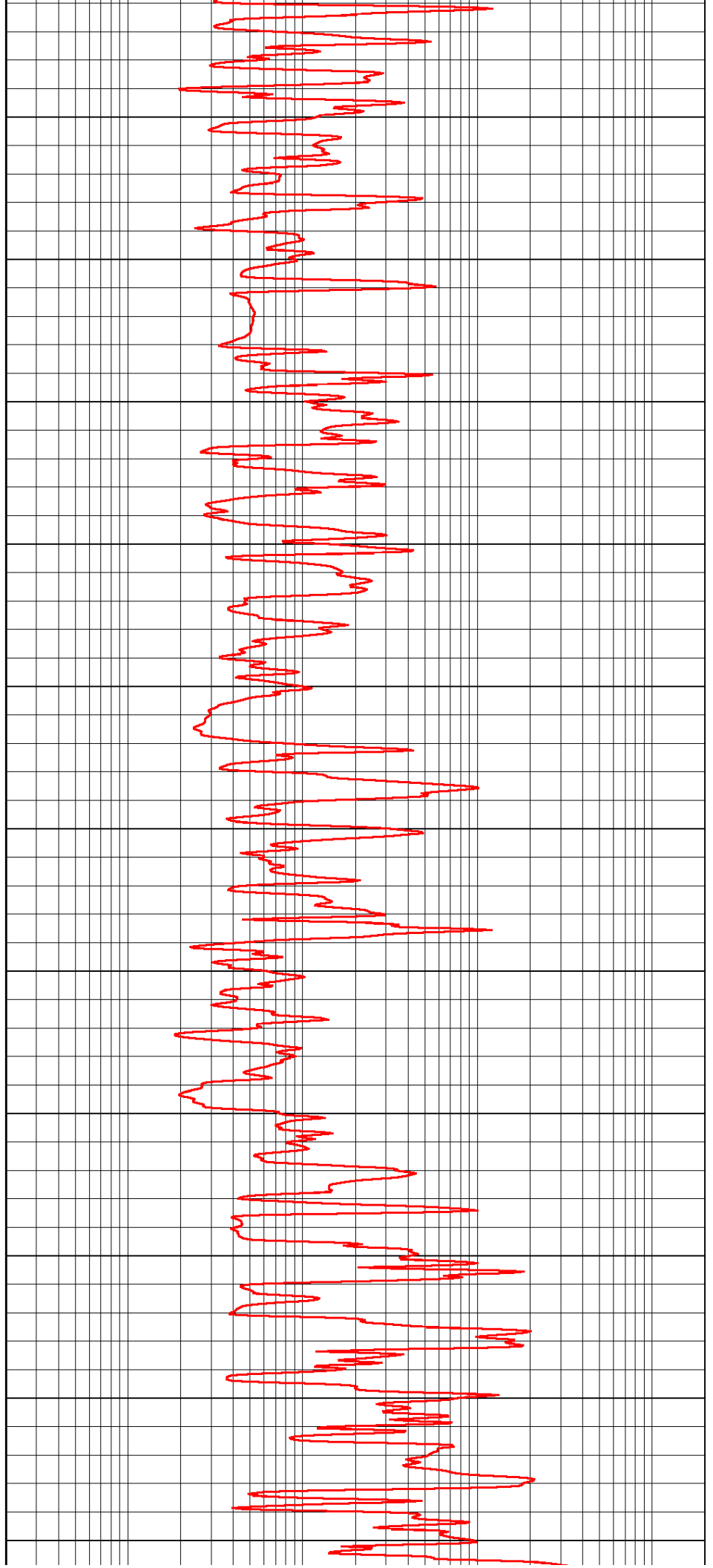
3250

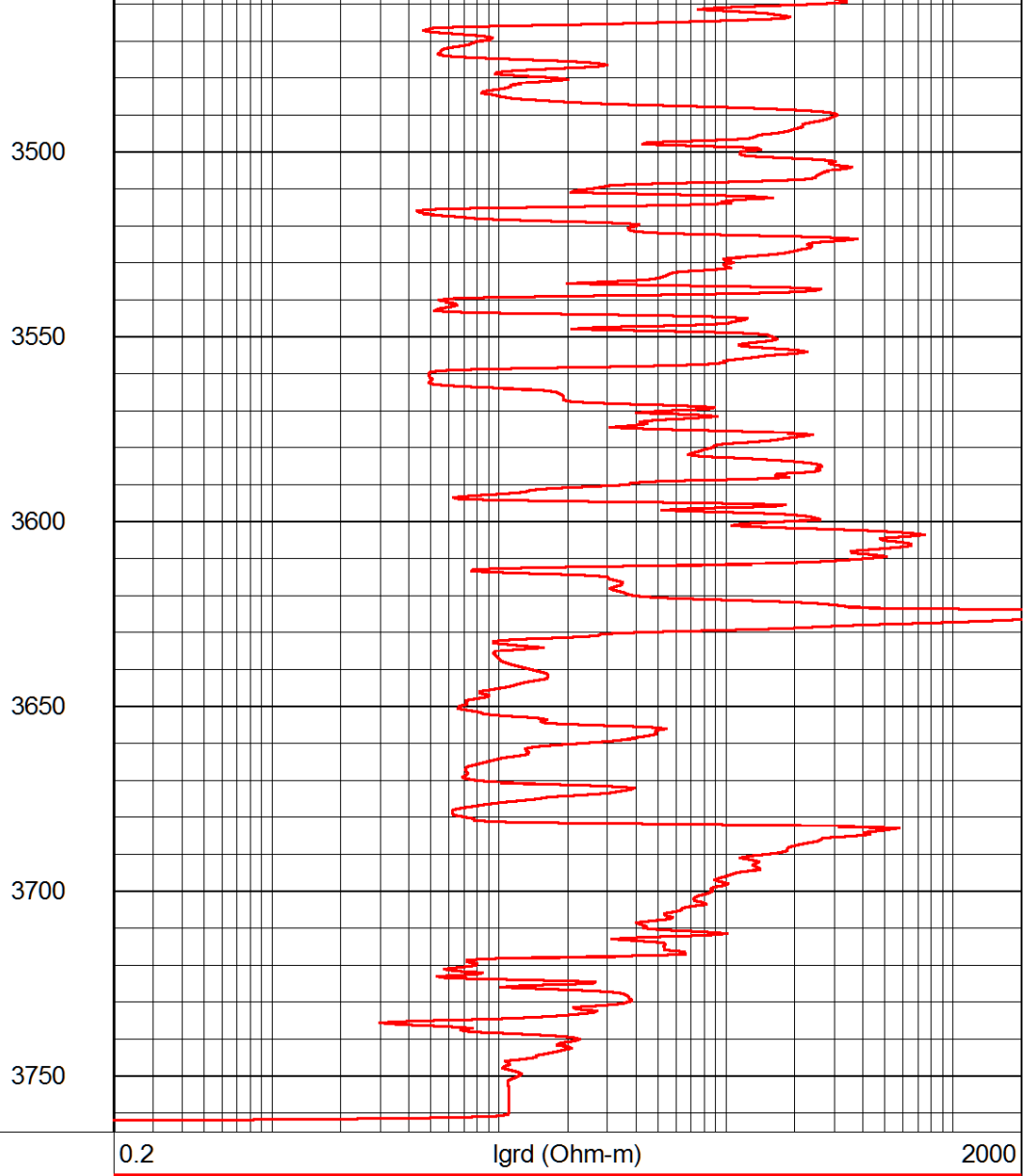
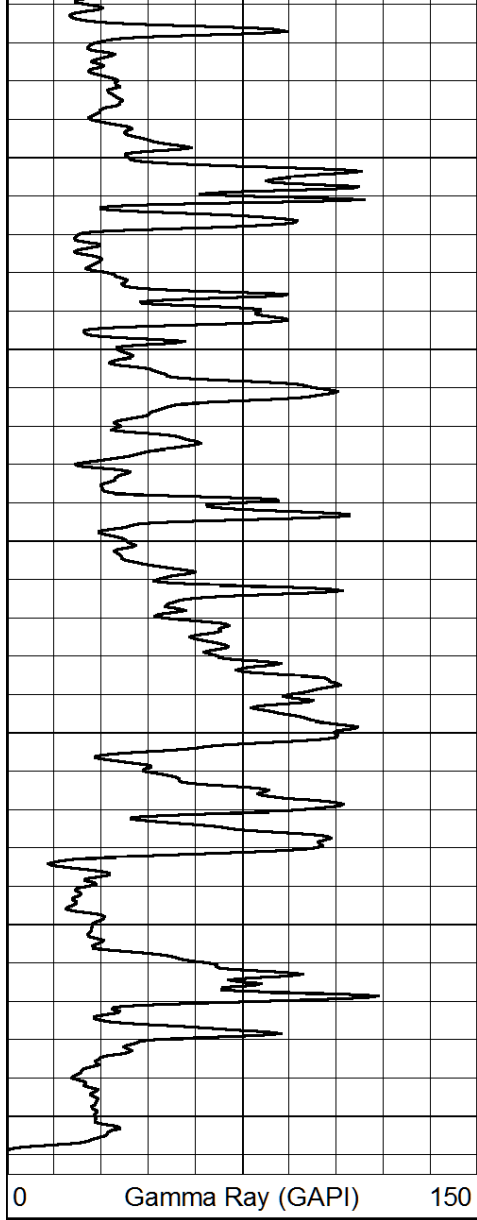
3300

3350

3400

3450



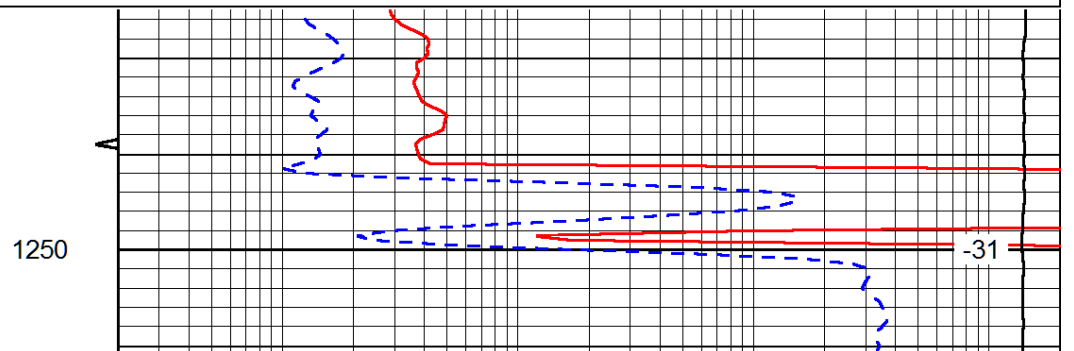
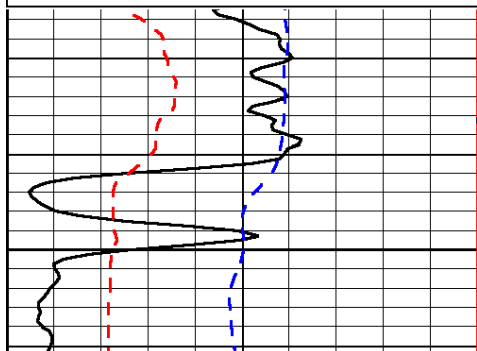


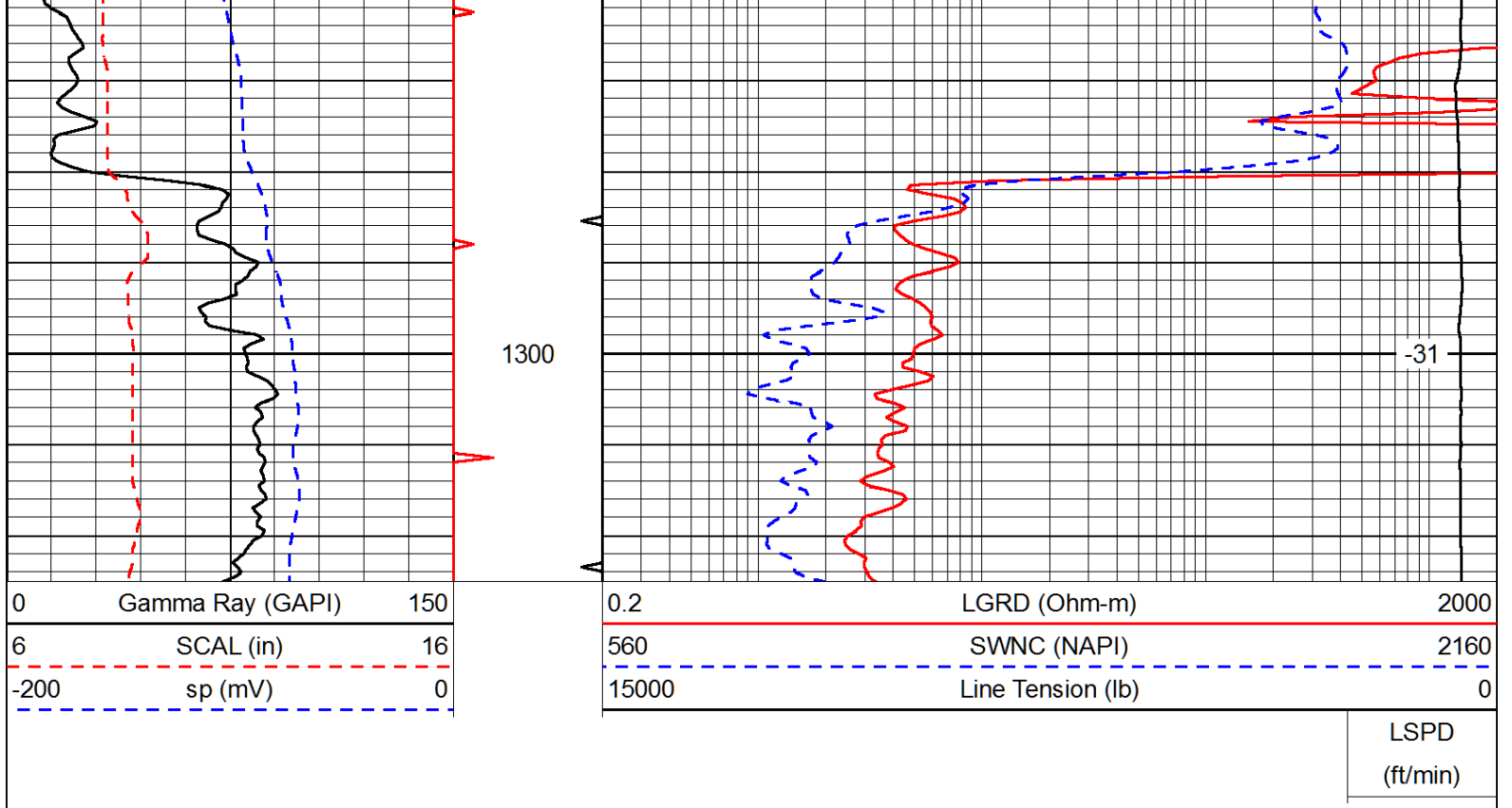
Database File: castle_021414hd.db
 Dataset Pathname: RAG/casrag
 Presentation Format: rag
 Dataset Creation: Fri Feb 14 08:26:13 2014
 Charted by: Depth in Feet scaled 1:240

0	Gamma Ray (GAPI)	150
6	SCAL (in)	16
-200	sp (mV)	0

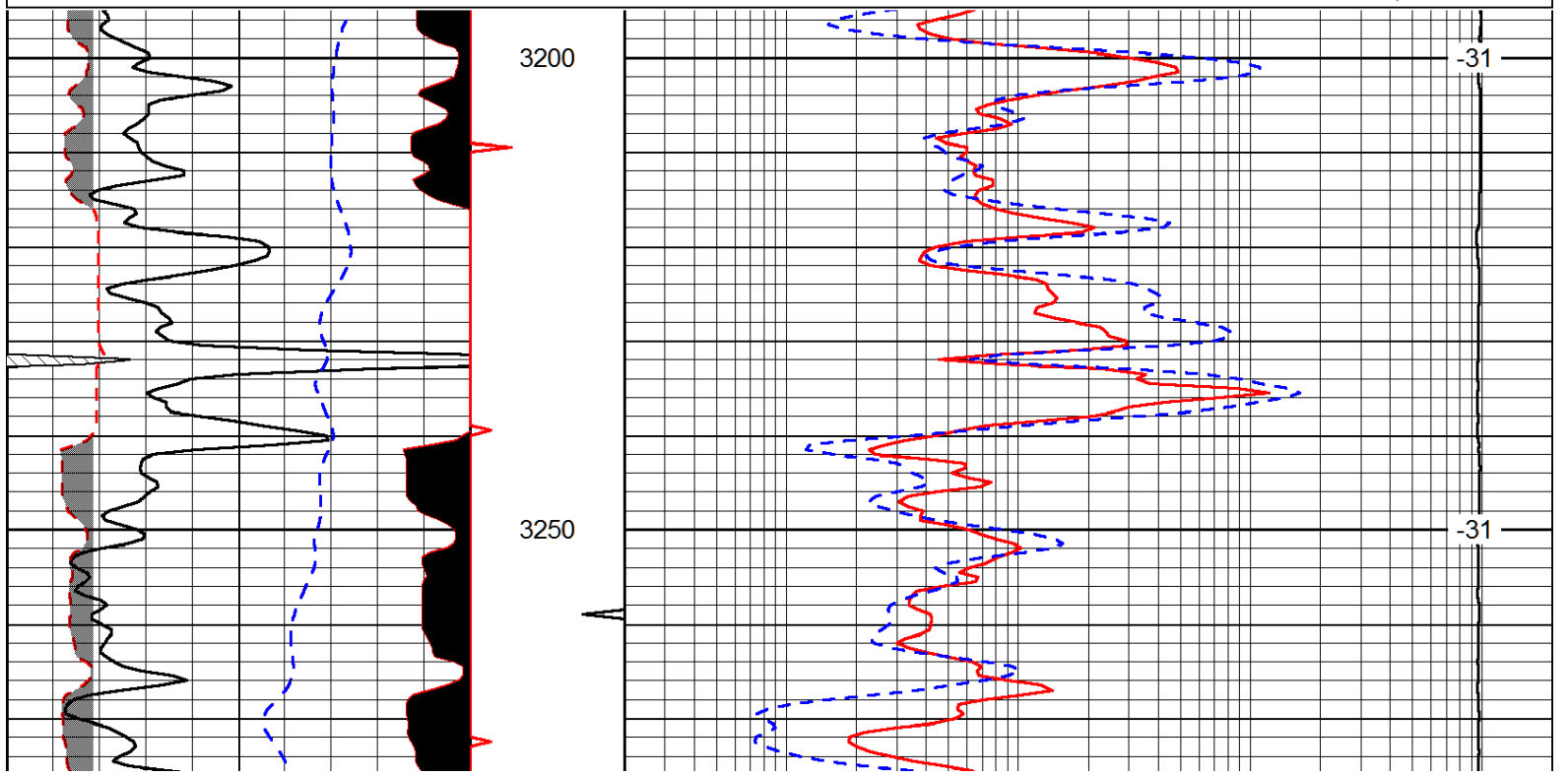
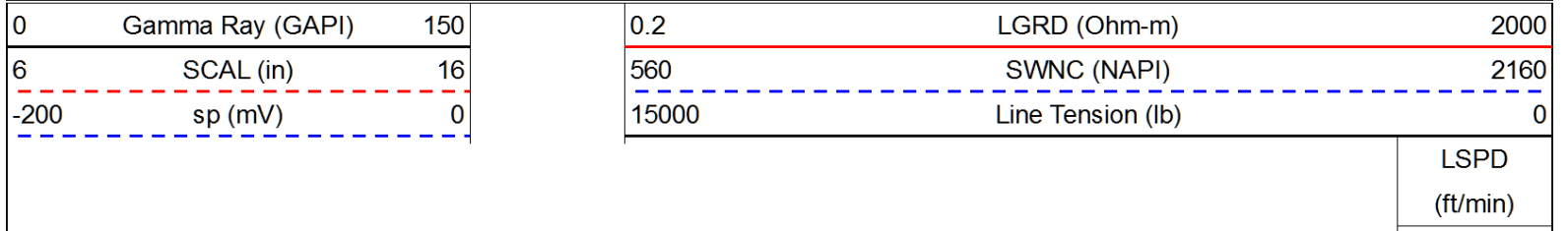
0.2	LGRD (Ohm-m)	2000
560	SWNC (NAPI)	2160
15000	Line Tension (lb)	0

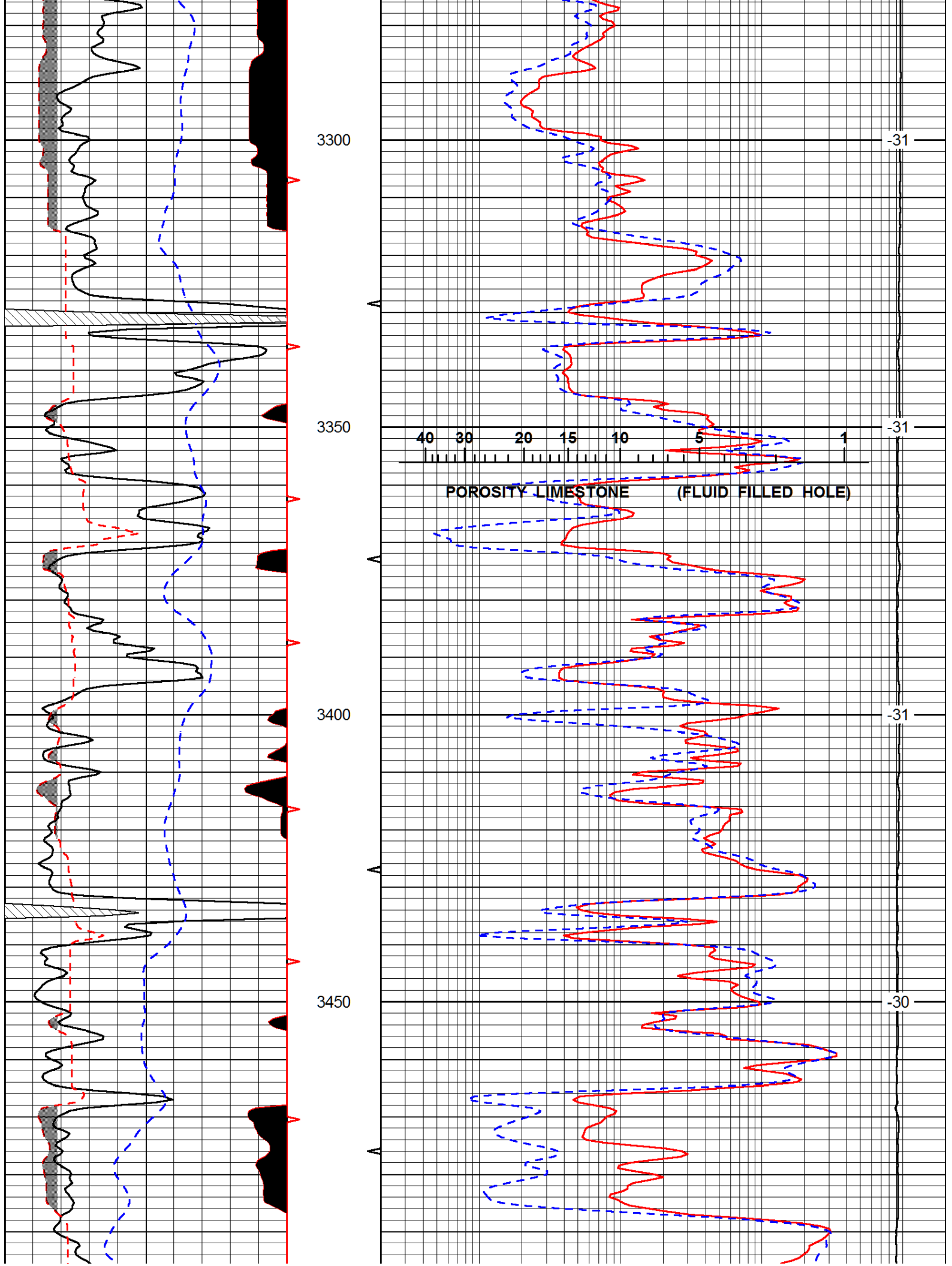
LSPD
(ft/min)

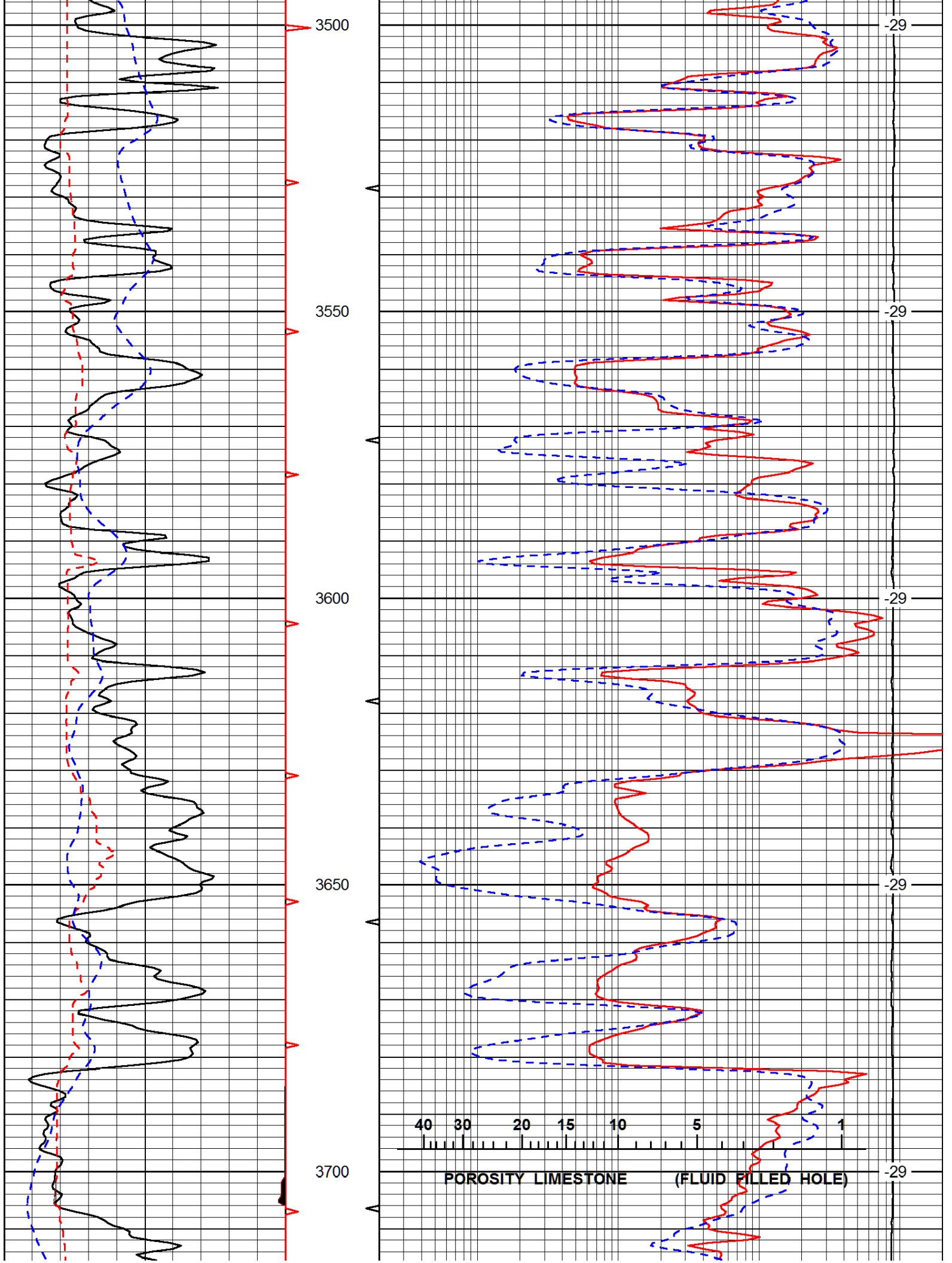


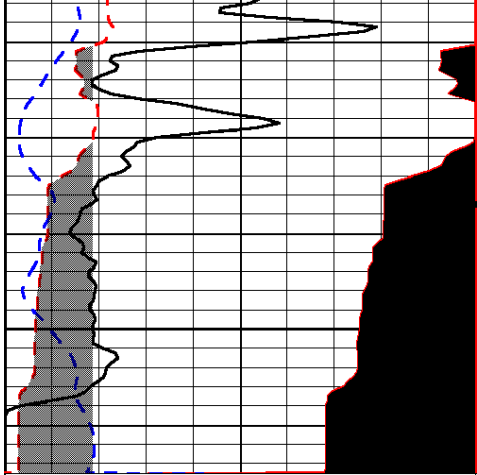


Database File: castle_021414hd.db
 Dataset Pathname: RAG/casrag
 Presentation Format: rag
 Dataset Creation: Fri Feb 14 08:26:13 2014
 Charted by: Depth in Feet scaled 1:240

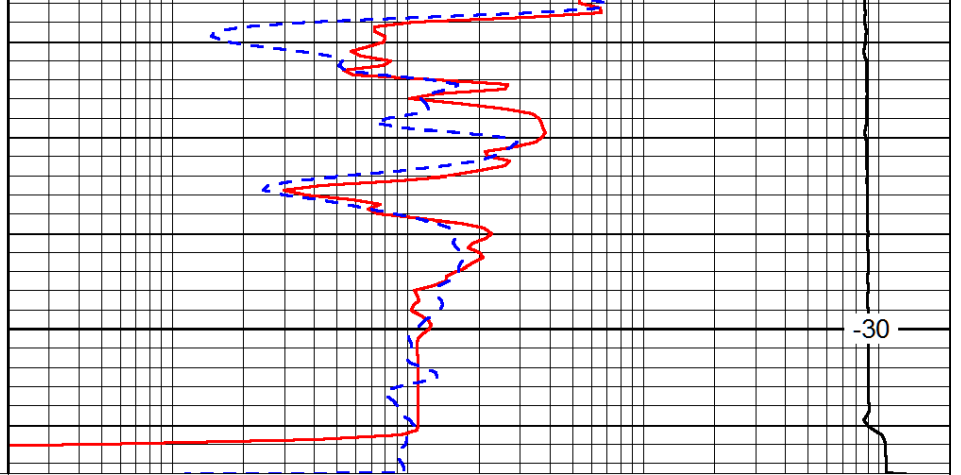








3750



-30

0	Gamma Ray (GAPI)	150
6	SCAL (in)	16
-200	sp (mV)	0

0.2	LGRD (Ohm-m)	2000
560	SWNC (NAPI)	2160
15000	Line Tension (lb)	0

LSPD
(ft/min)