



**Sonic Cement
Bond Log**

15-007-24057-0000

API No.

Company **Chieftain Oil Company, Inc.**

Well **Molz #21**

Field

County **Barber**

State **Kansas**

Location **2300' FNL & 340' FEL
NW - SE - SE - NE**

Sec: **11** Twp: **35S** Rge: **12W**

Other Services
Mast Trailer

Permanent Datum Ground Level Elevation 1387
Log Measured From Kelly Bushing 13 Ft. Above Perm. Datum
Drilling Measured From Kelly Bushing

Elevation
K.B. 1400
D.F. 1398
G.L. 1387

| | | |
|---------------------------|--------------|------|
| Run Number | One | |
| Date Survey | 10/4/2013 | |
| Date Cementing | 9/30/2013 | |
| Type Cementing Operation | Primary | |
| Depth Driller | 5610 | |
| Depth Logger | 5540 | |
| Logged Interval | 5539 to 3950 | to |
| Casing Driller | 5.5 @ TD | @ |
| Float Collar -- D.V. Tool | //// | //// |
| Squeeze Depth | //// | |
| Amount & Type Cement | //// | |
| Amount & Type Admix | //// | |
| Type Fluid In Hole | Water | |
| Fluid Level | Full | |
| Salinity PPM CL | //// | |
| Weight lb/gal -- Vis. | //// | //// |
| Approx. Logged Cement Top | | |
| Calculated Cement Top | 4100 | |
| Max. Hole Temperature | //// | |
| Tool No. | DIG02 | |
| Spacing Recorded | 3-5 | |
| Equipment -- Location | 02 Pratt | |
| Recorded By | N. Schneider | |
| Witnessed By | Ryan Molz | |

<<< Fold Here >>>

All interpretations are opinions based on inferences from electrical or other measurements and we cannot and do not guarantee the accuracy or correctness of any interpretation, and we shall not, except in the case of gross or willful negligence on our part, be liable or responsible for any loss, costs, damages, or expenses incurred or sustained by anyone resulting from any interpretation made by any of our officers, agents or employees. These interpretations are also subject to our general terms and conditions set out in our current Price Schedule.

Comments

Thank you for using Excel Wireline (620) 388-5676

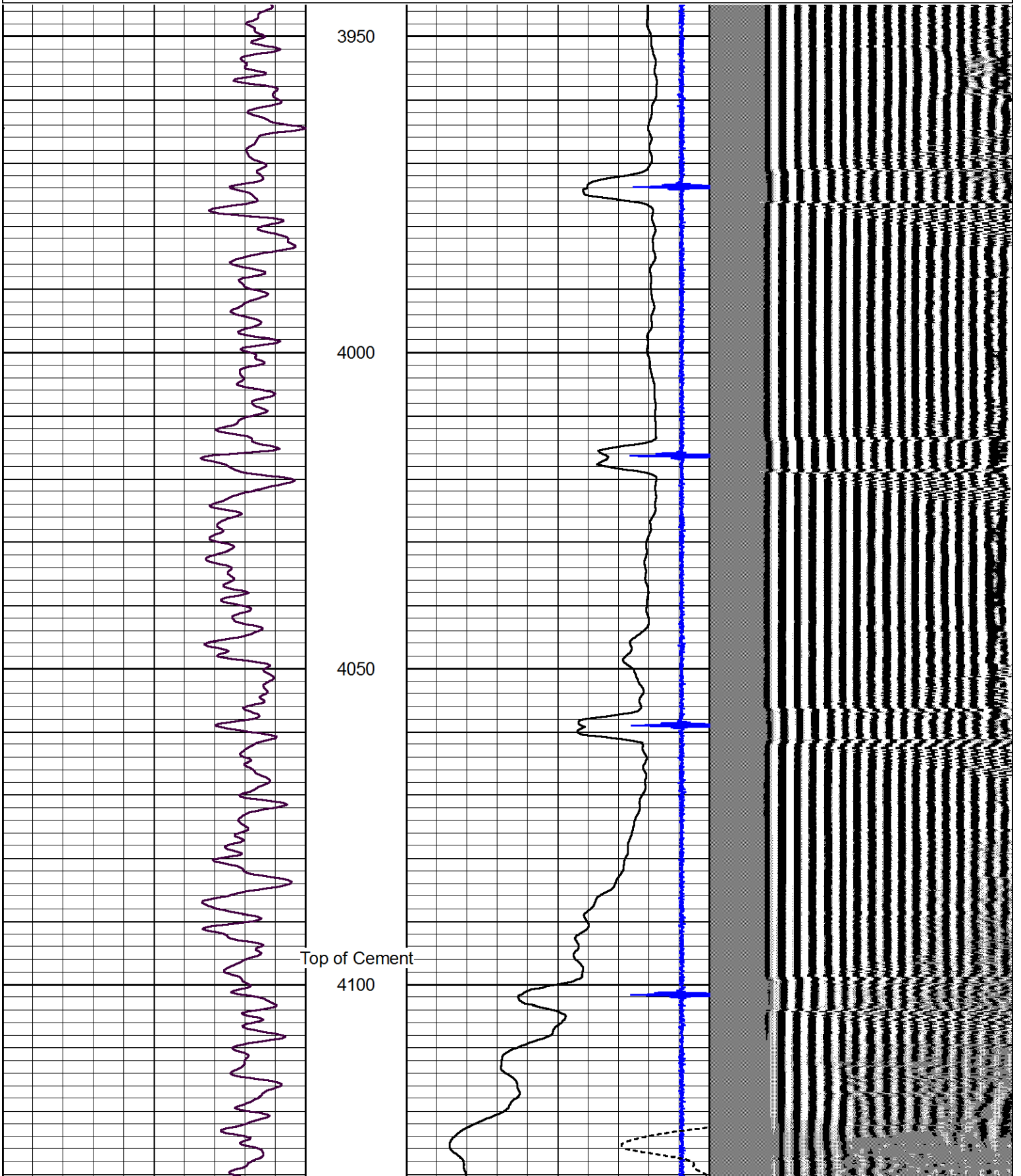
Hardtner
E to Clairmont Rd
100 yds N
W into

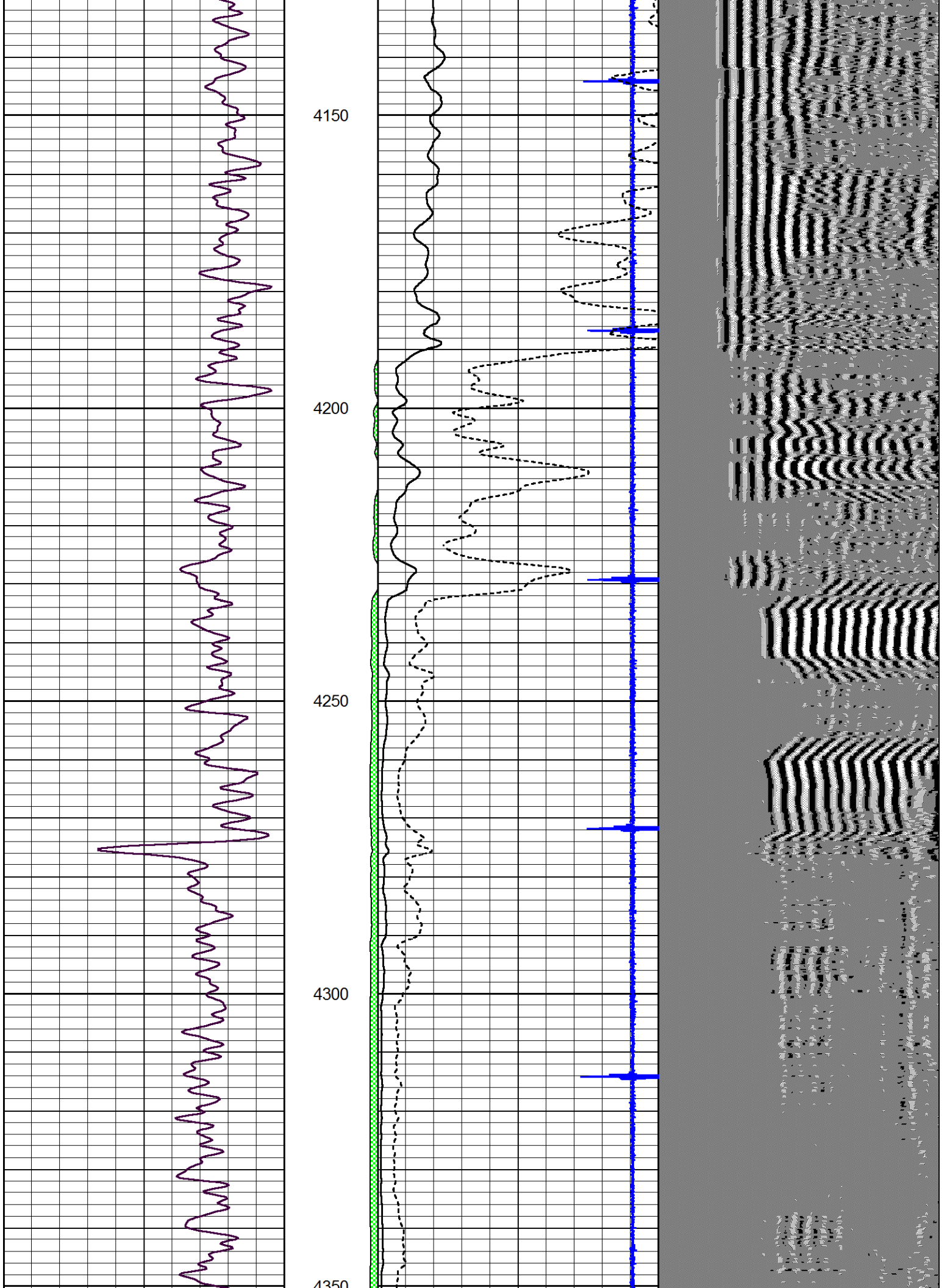


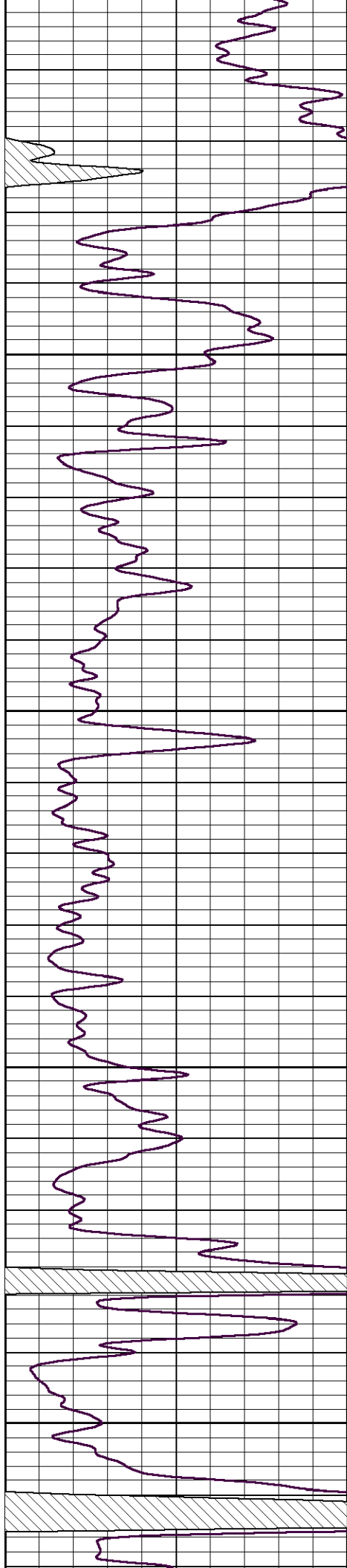
Main Pass

Database File cheiftain_molz_21.db
 Dataset Pathname grcbl/pass4
 Presentation Format cblcr
 Dataset Creation Fri Oct 04 11:21:37 2013
 Charted by Depth in Feet scaled 1:240

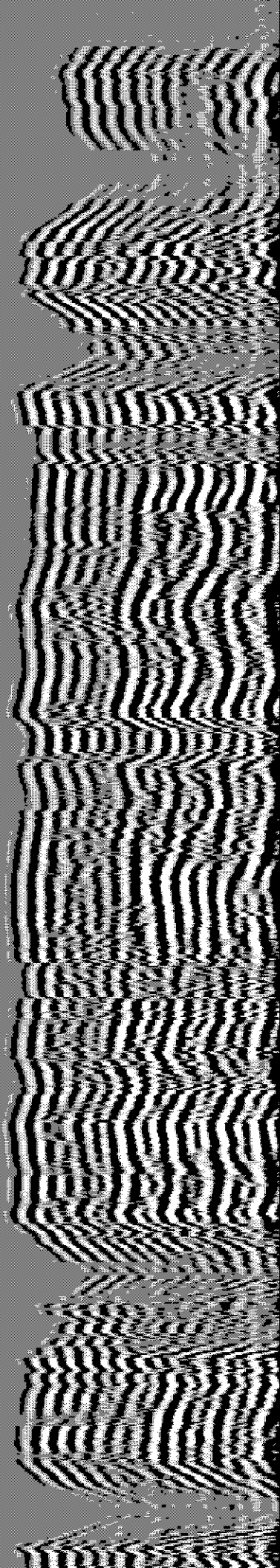
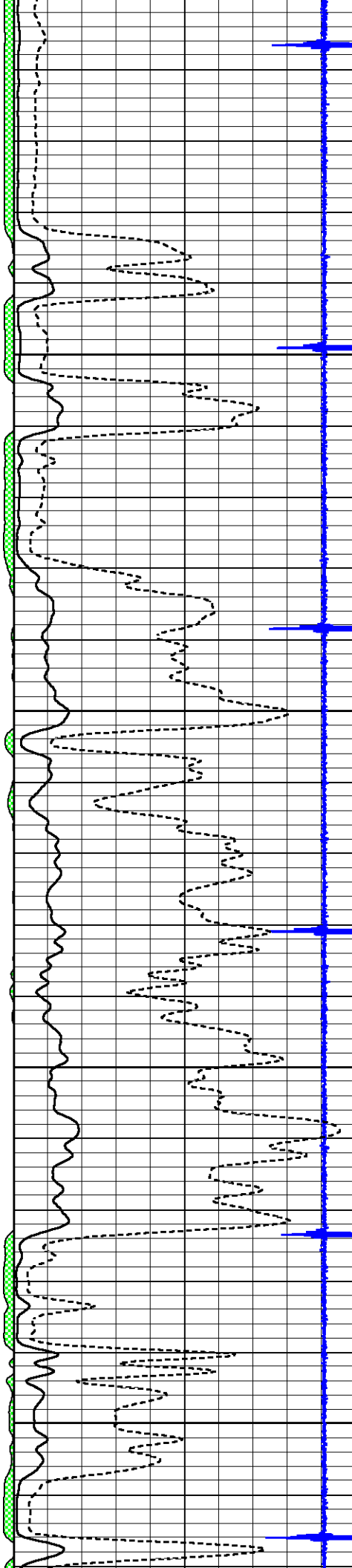
| | | | | | | | | | |
|---|------------------|-----|---------|---|--------------------------|------|-----|--------|------|
| 0 | Gamma Ray (GAPI) | 150 | amp3ft | 3 | Casing Collars | -0.3 | 200 | wvf5ft | 1200 |
| | | | (mV) | 0 | Amplified Amplitude (mV) | 100 | | | |
| | | | -100 10 | 0 | Pipe Amplitude (mV) | 20 | | | |

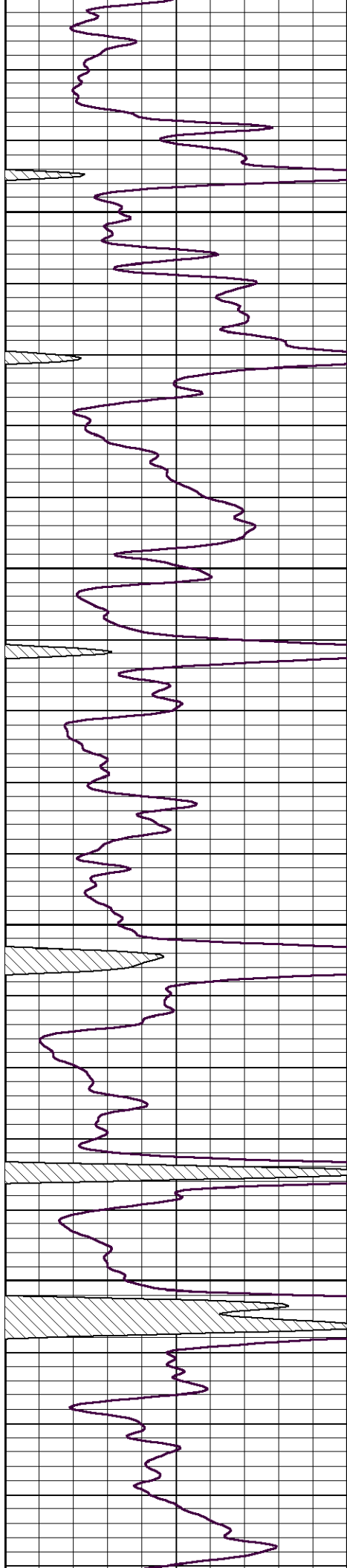






4550
4400
4450
4500
4550



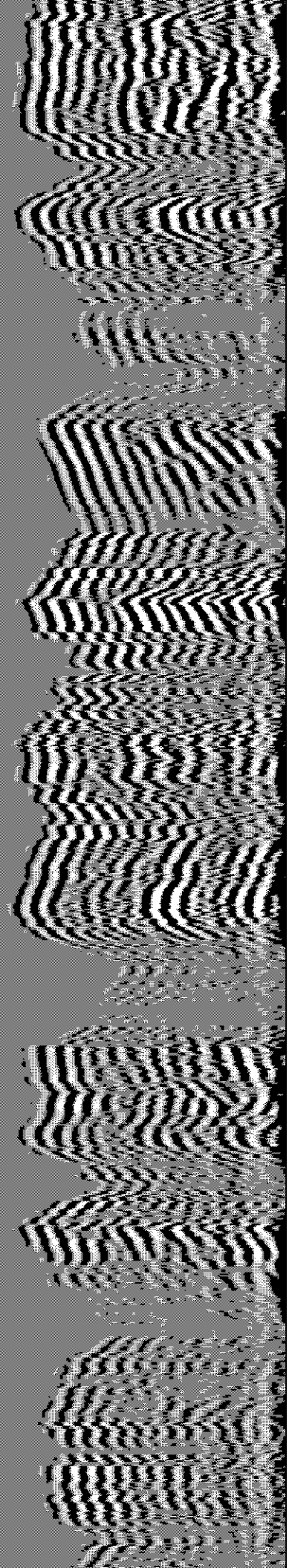
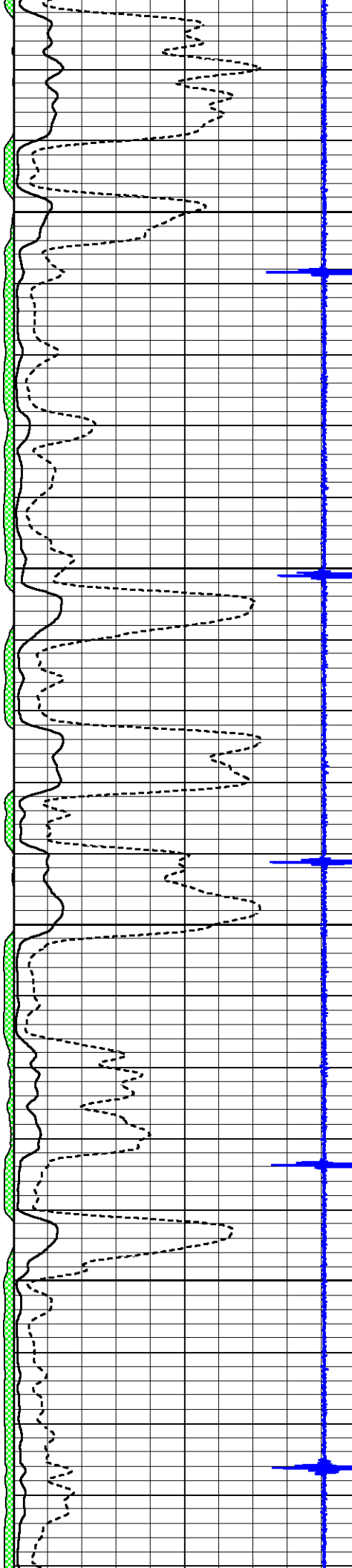


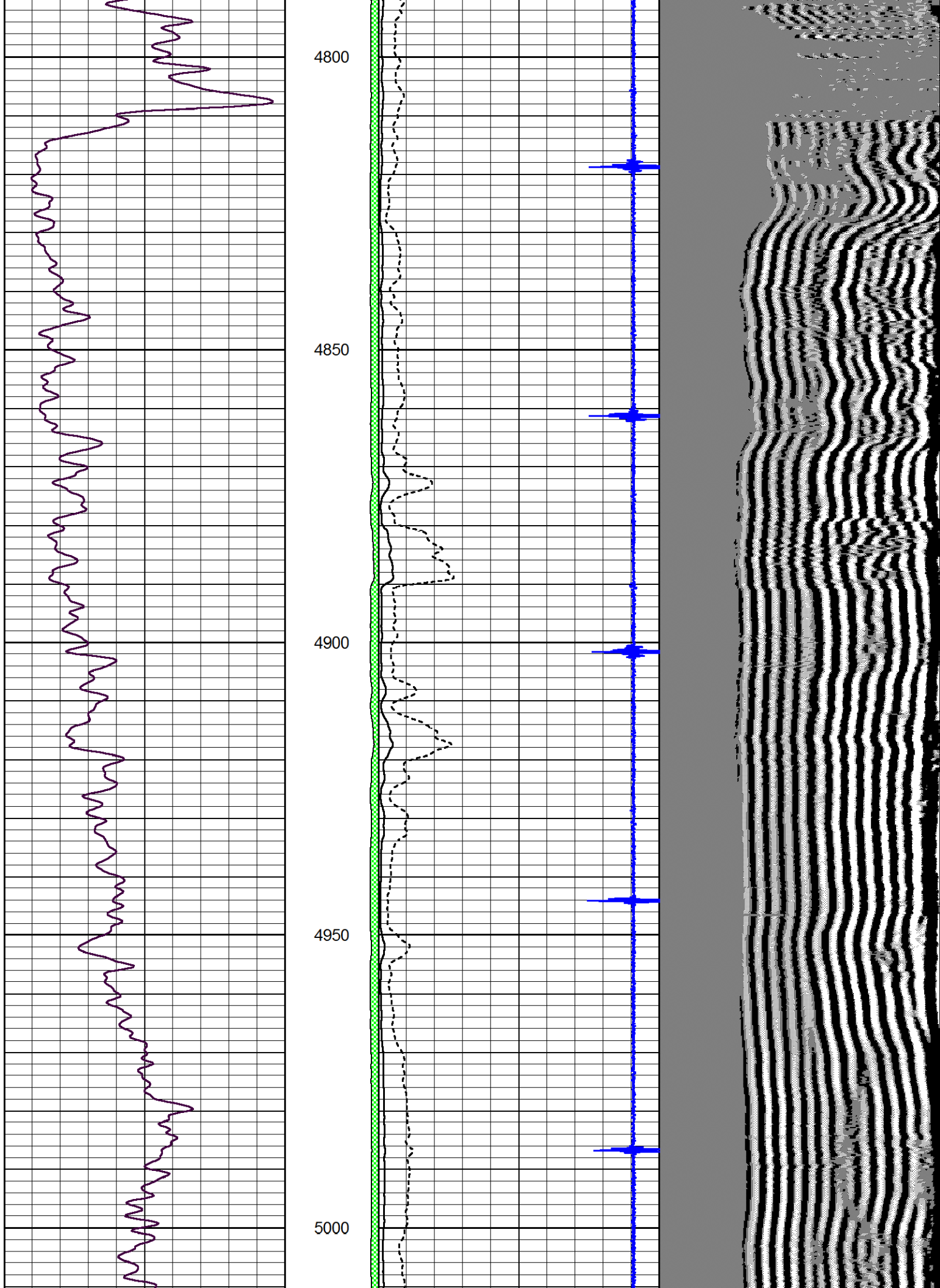
4600

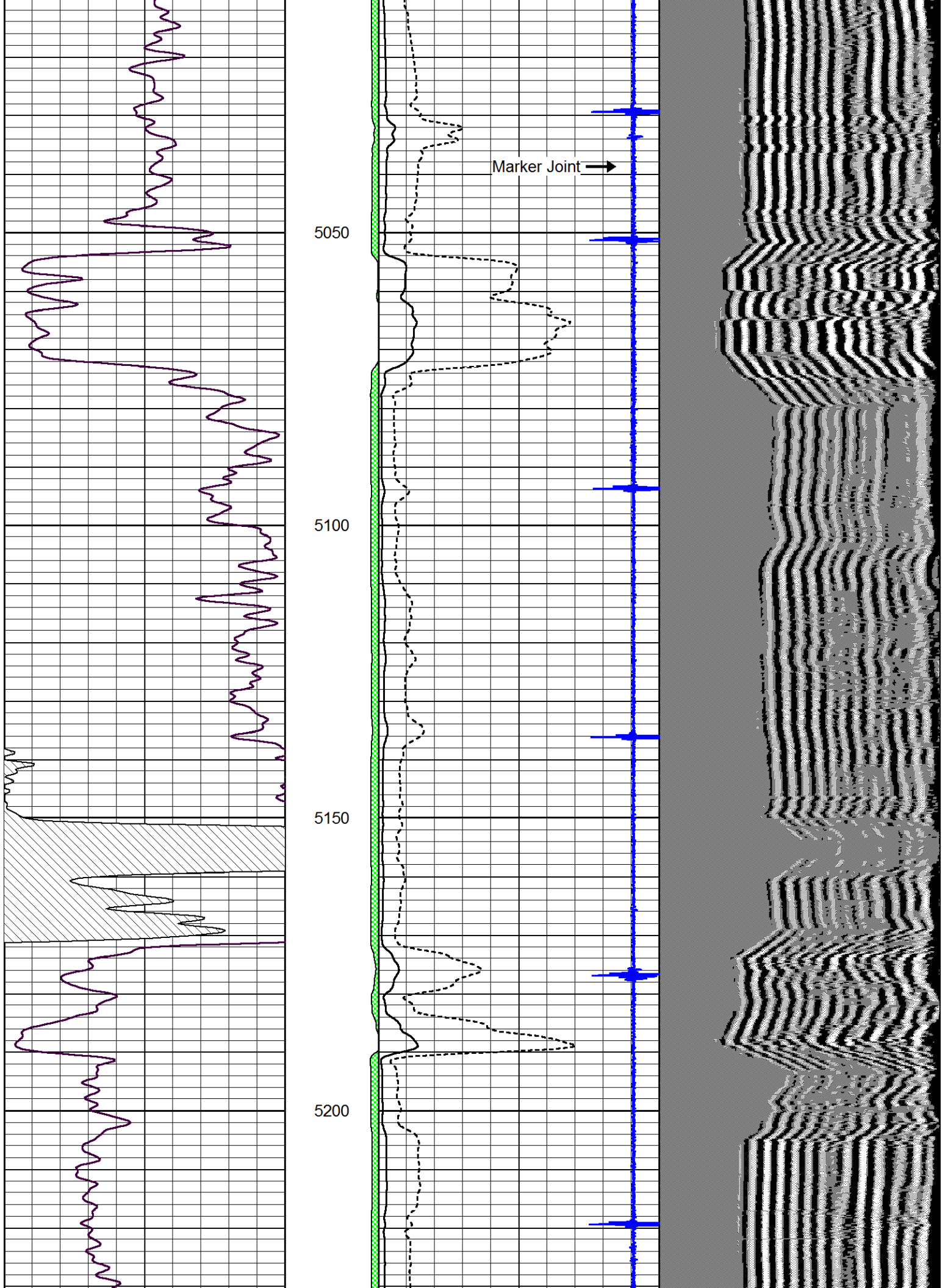
4650

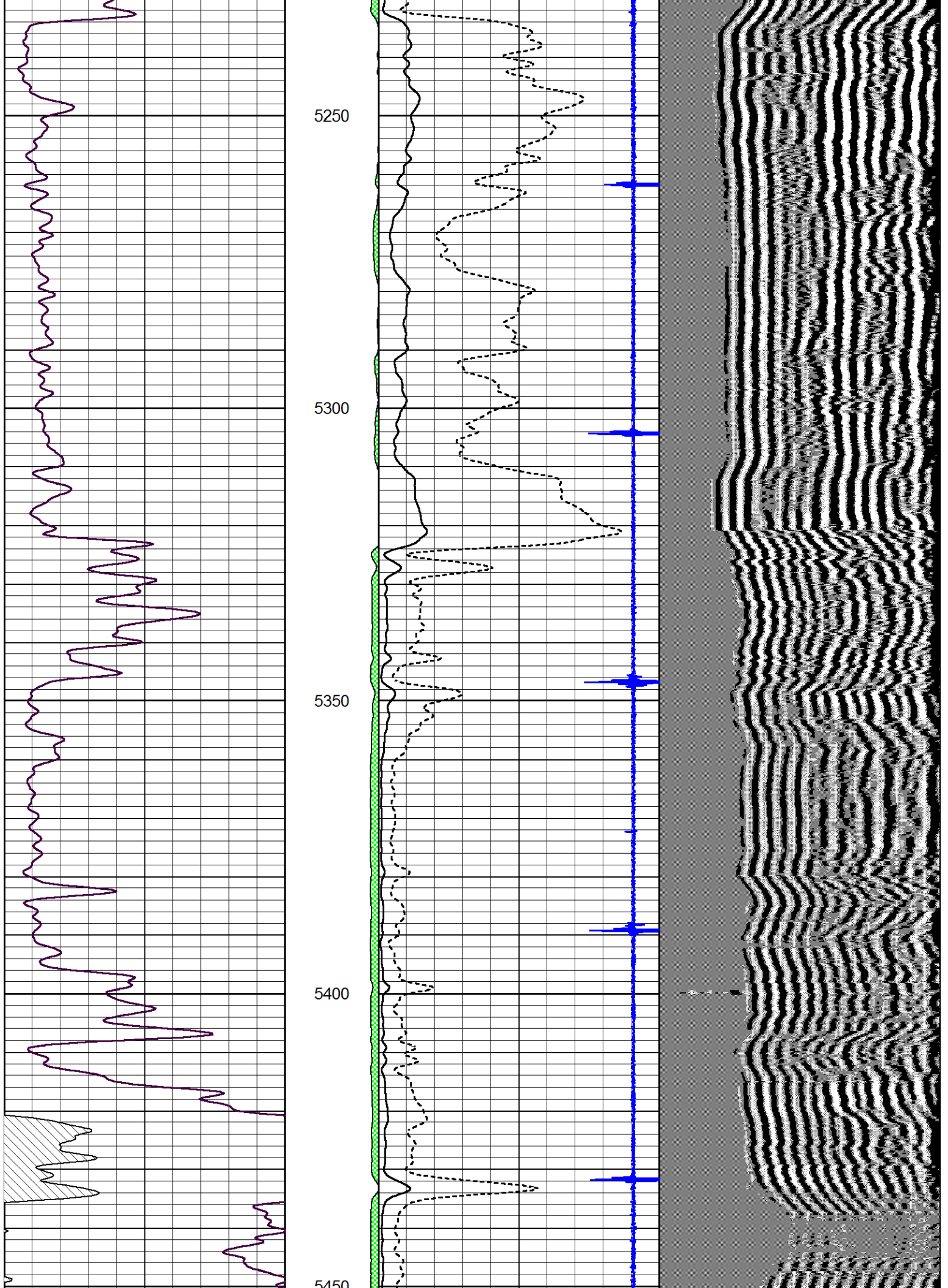
4700

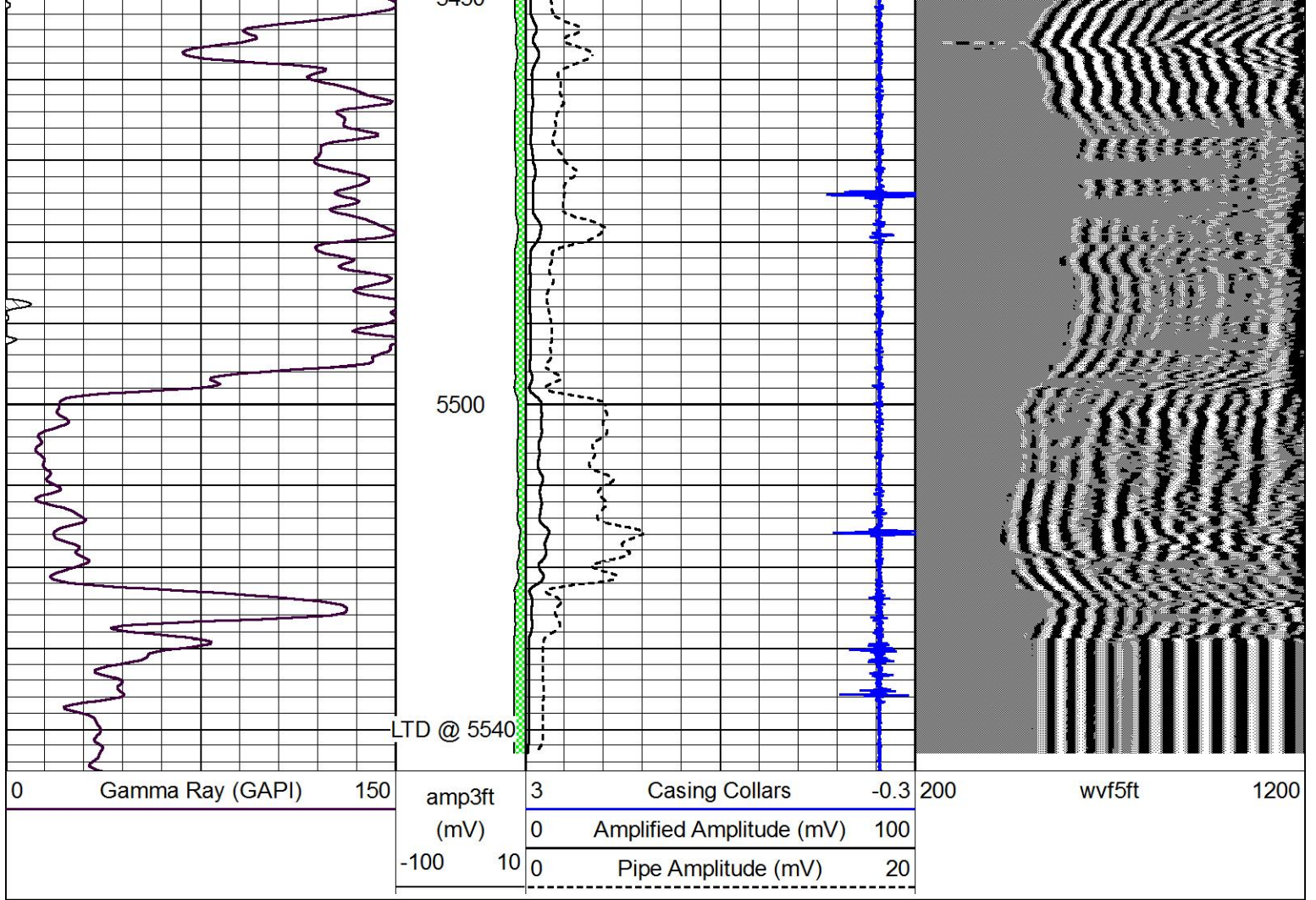
4750











Repeat Section

Database File cheiftain_molz_21.db
 Dataset Pathname grcbl/pass3
 Presentation Format cbldr
 Dataset Creation Fri Oct 04 11:16:03 2013
 Charted by Depth in Feet scaled 1:240

