



**COMPLETION
& PRODUCTION
SERVICES CO.**

**SONIC
LOG**

Company MULL DRILLING COMPANY, INC.
Well #1-5 SOMY
Field
County NESS
State KANSAS

Company MULL DRILLING COMPANY, INC.
Well #1-5 SOMY
Field
County NESS
State KANSAS

Location: 600' FSL & 2310' FWL
API #: 15-135-25640-0000
Permanent Datum GROUND LEVEL Elevation 2465
Log Measured From KELLY BUSHING 5' A.G.L.
Drilling Measured From KELLY BUSHING
SEC 5 TWP 17S RGE 24W
Other Services
CDL/CNL/PE
DIL/MEL
Elevation
K.B. 2470
D.F. 2468
G.L. 2465

Date	8/29/13
Run Number	TWO
Depth Driller	4570
Depth Logger	4568
Bottom Logged Interval	4554
Top Log Interval	200
Casing Driller	8 5/8" @ 215'
Casing Logger	213'
Bit Size	7 7/8"
Type Fluid in Hole	CHEMICAL MUD
Density / Viscosity	8.9 / 47
pH / Fluid Loss	11.0 / 7.8
Source of Sample	FLOWLINE
Rm @ Meas. Temp	0.90 @ 88F
Rmt @ Meas. Temp	0.68 @ 88F
Rmc @ Meas. Temp	1.08 @ 88F
Source of Rmf / Rmc	MEASUREMENT
Rm @ BHT	0.65 @ 121F
Time Circulation Stopped	2 HOURS
Time Logger on Bottom	
Maximum Recorded Temperature	121F
Equipment Number	4010
Location	HAYS, KANSAS
Recorded By	JEFF GRONEWEG
Witnessed By	KEVIN KESSLER

<<< Fold Here >>>

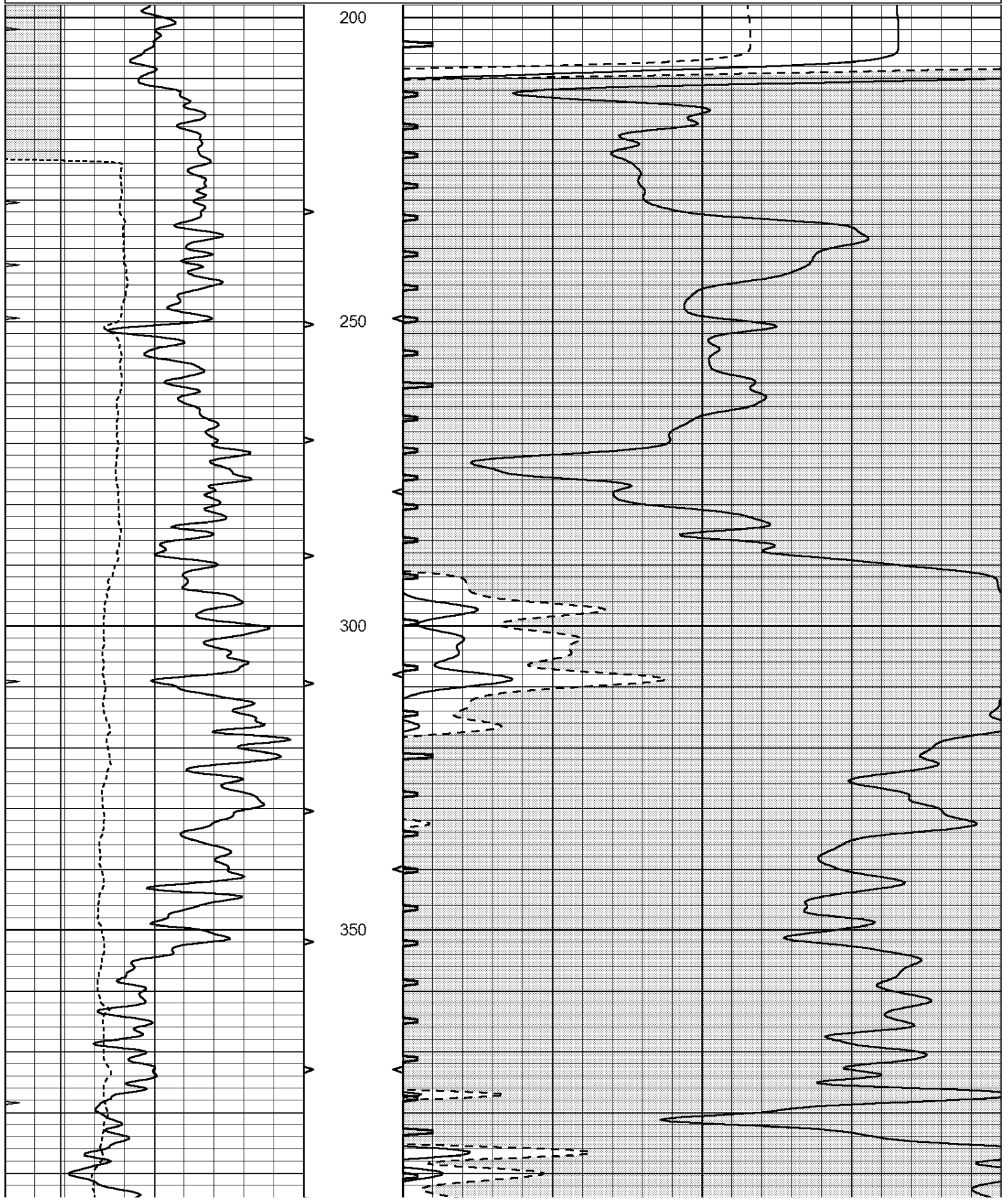
All interpretations are opinions based on inferences from electrical or other measurements and we cannot and do not guarantee the accuracy or correctness of any interpretation, and we shall not, except in the case of gross or willful negligence on our part, be liable or responsible for any loss, costs, damages, or expenses incurred or sustained by anyone resulting from any interpretation made by any of our officers, agents or employees. These interpretations are also subject to our general terms and conditions set out in our current Price Schedule.

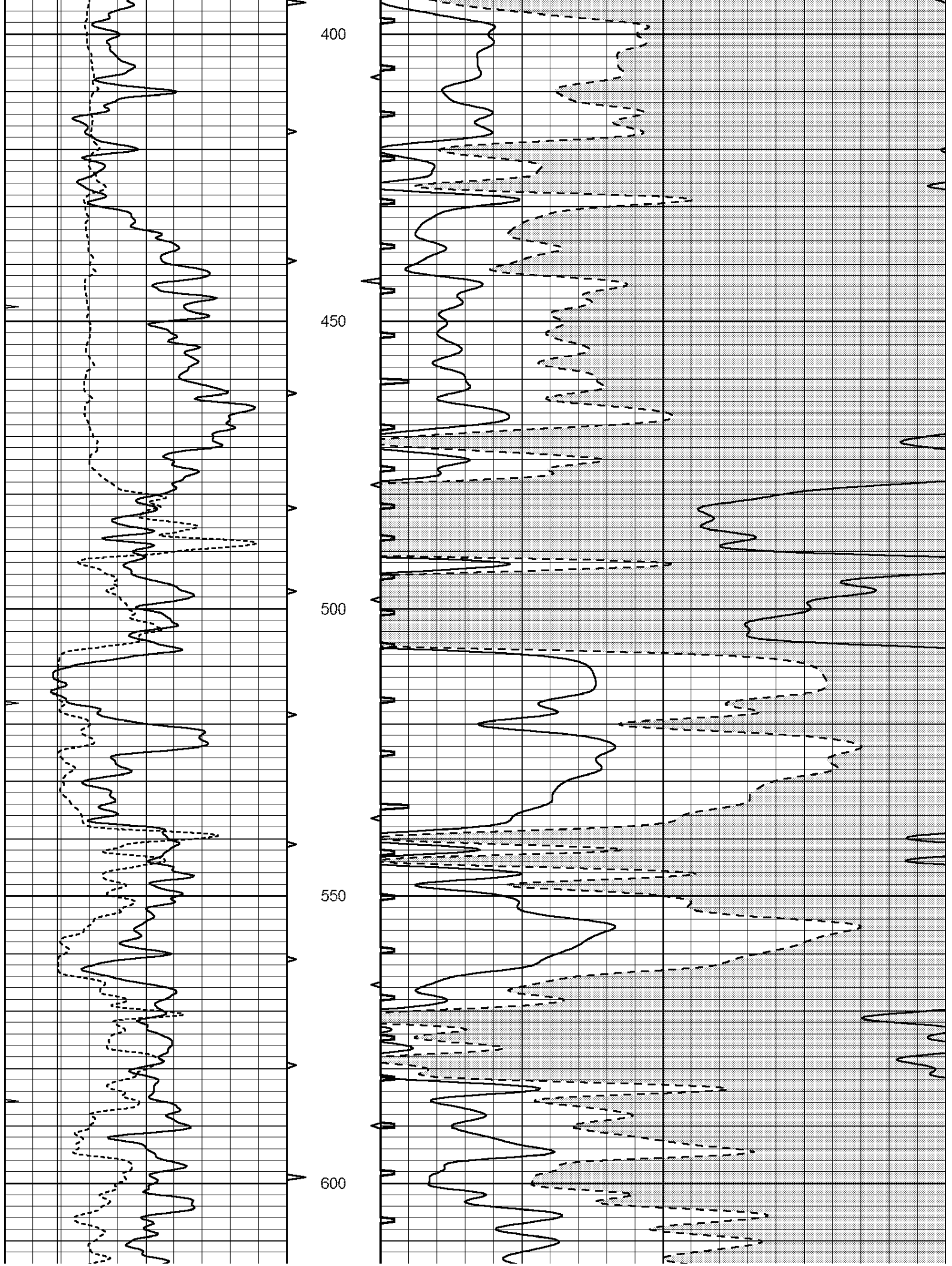
Comments

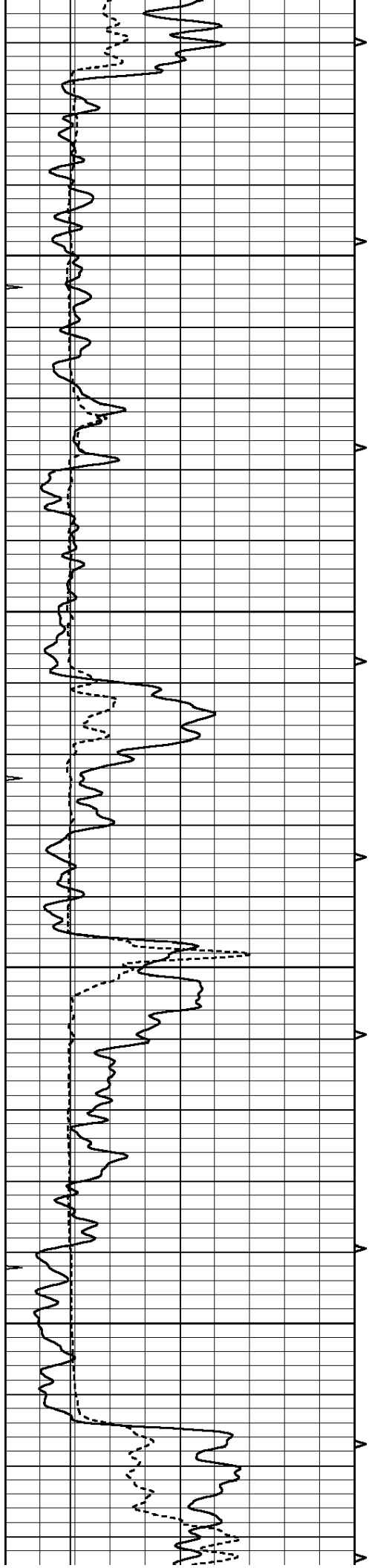
THANK YOU FOR USING NABORS, HAYS, KS. (785) 628-6395
DIRECTIONS:
INTERSECTION OF HWYS 283 & 4 - 3 MILES SOUTH TO RD 230 - 4 1/2 MILES WEST
NORTH INTO

Database File: 011595pe.db
Dataset Pathname: pass6.2
Presentation Format: _slt
Dataset Creation: Fri Aug 30 03:05:18 2013 by Calc Open-Cased 090629
Charted by: Depth in Feet scaled 1:240

0	GAMMA RAY (GAPI)	150	ABHV	140	DELTA TIME (usec/ft)	40
6	CALIPER (in)	16	10 (ft3) 0	30	SONIC POROSITY (pu)	-10
0	MINMK	20	TBHV	0	ITT (msec)	20
			0 (ft3) 10			





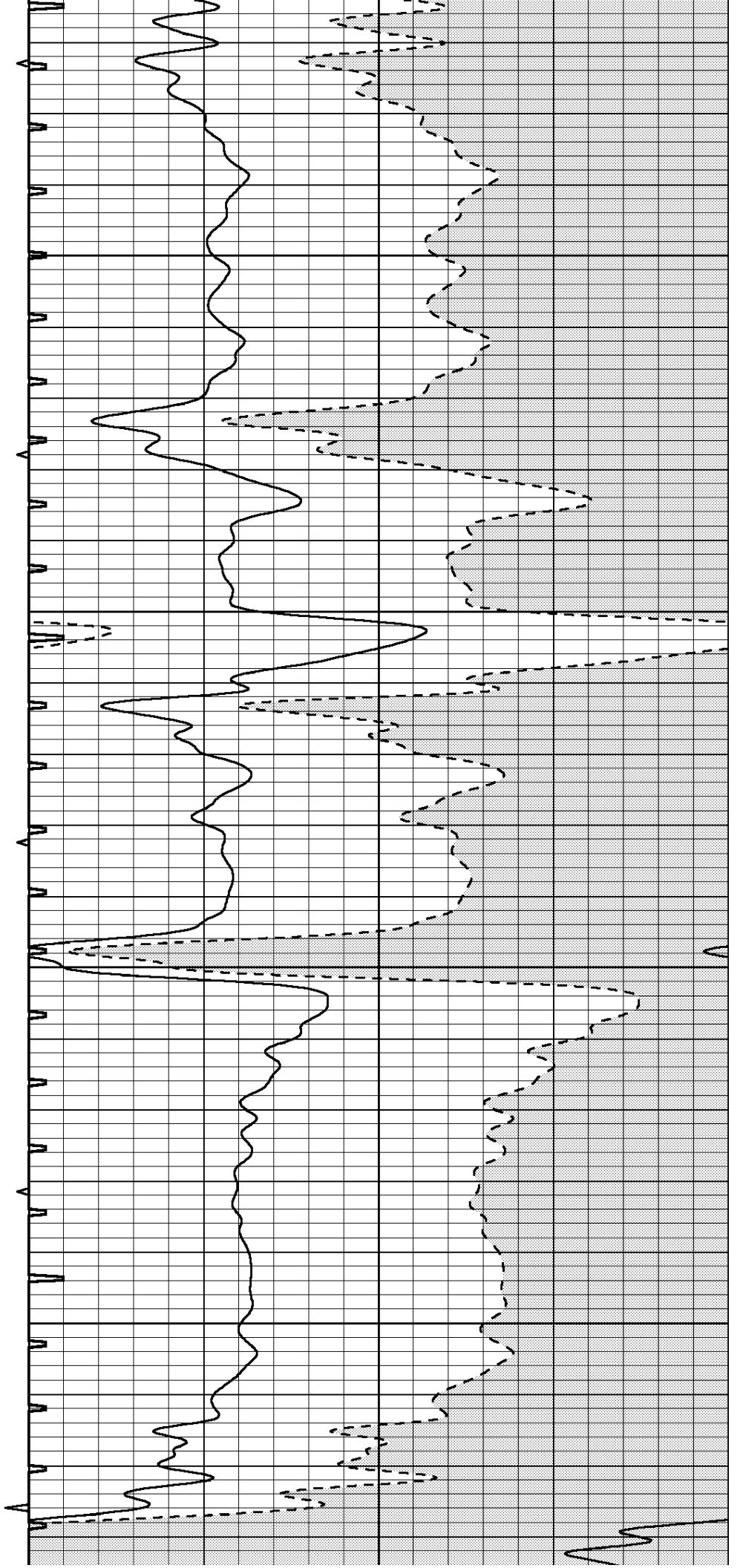


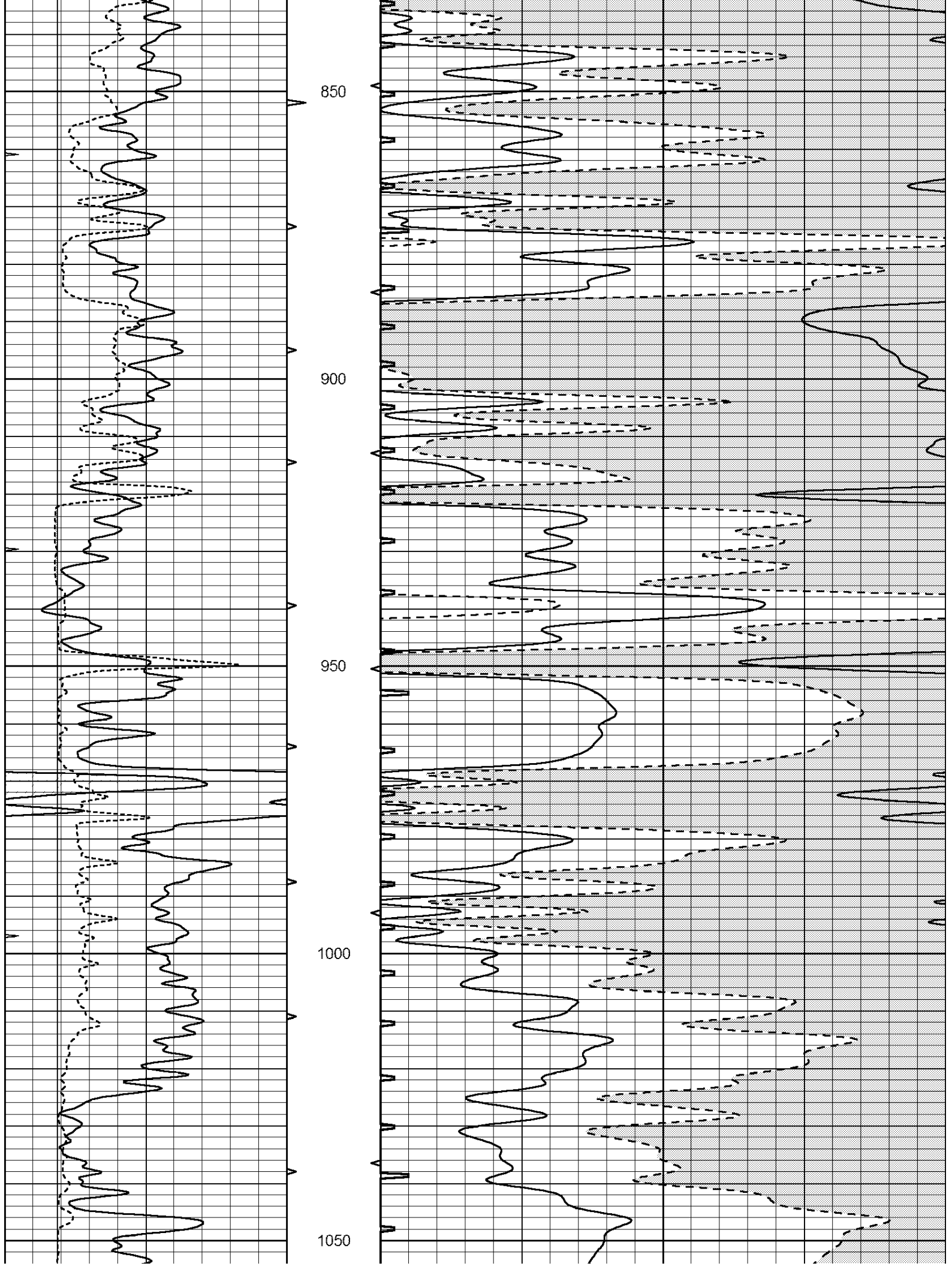
650

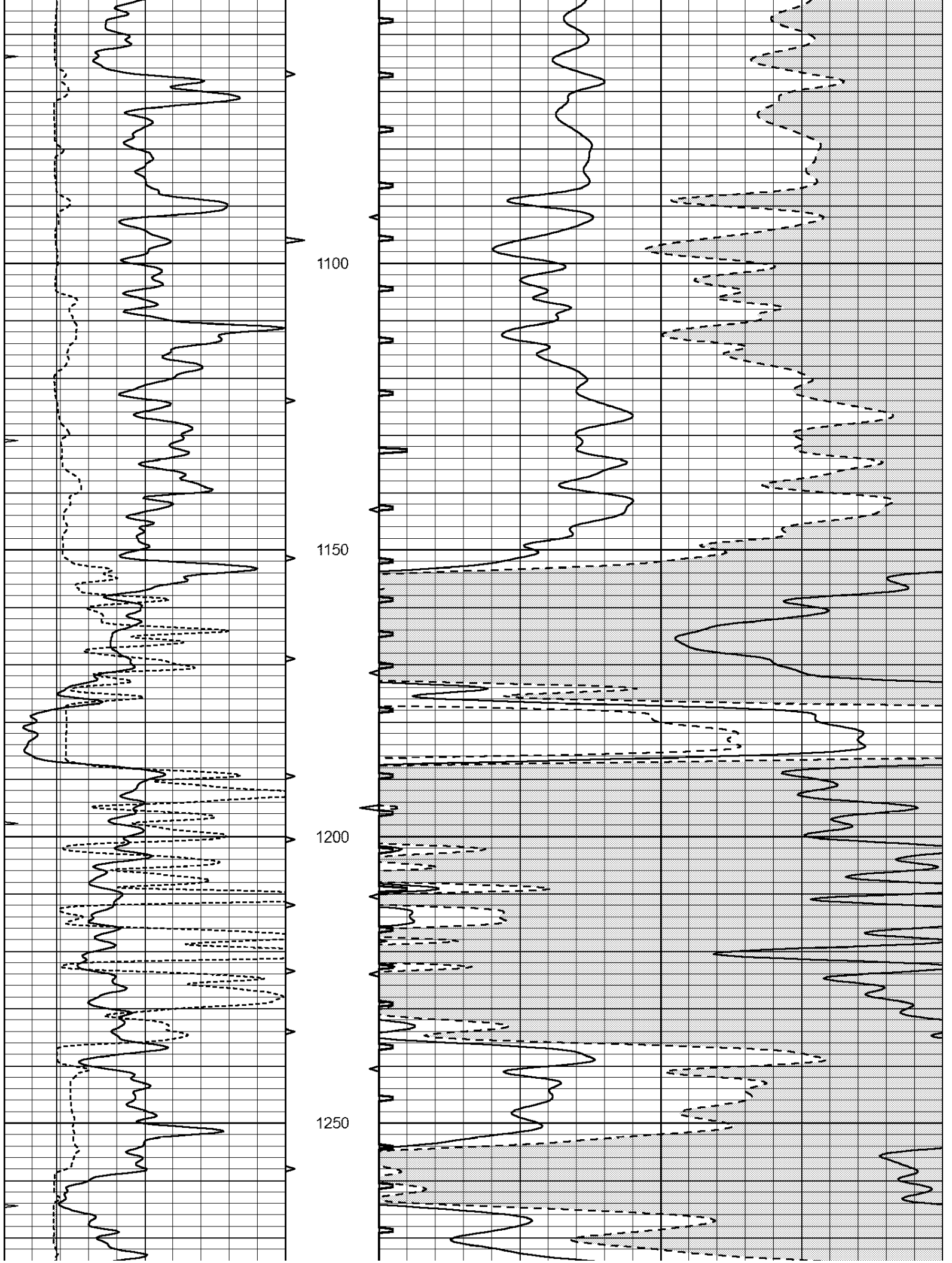
700

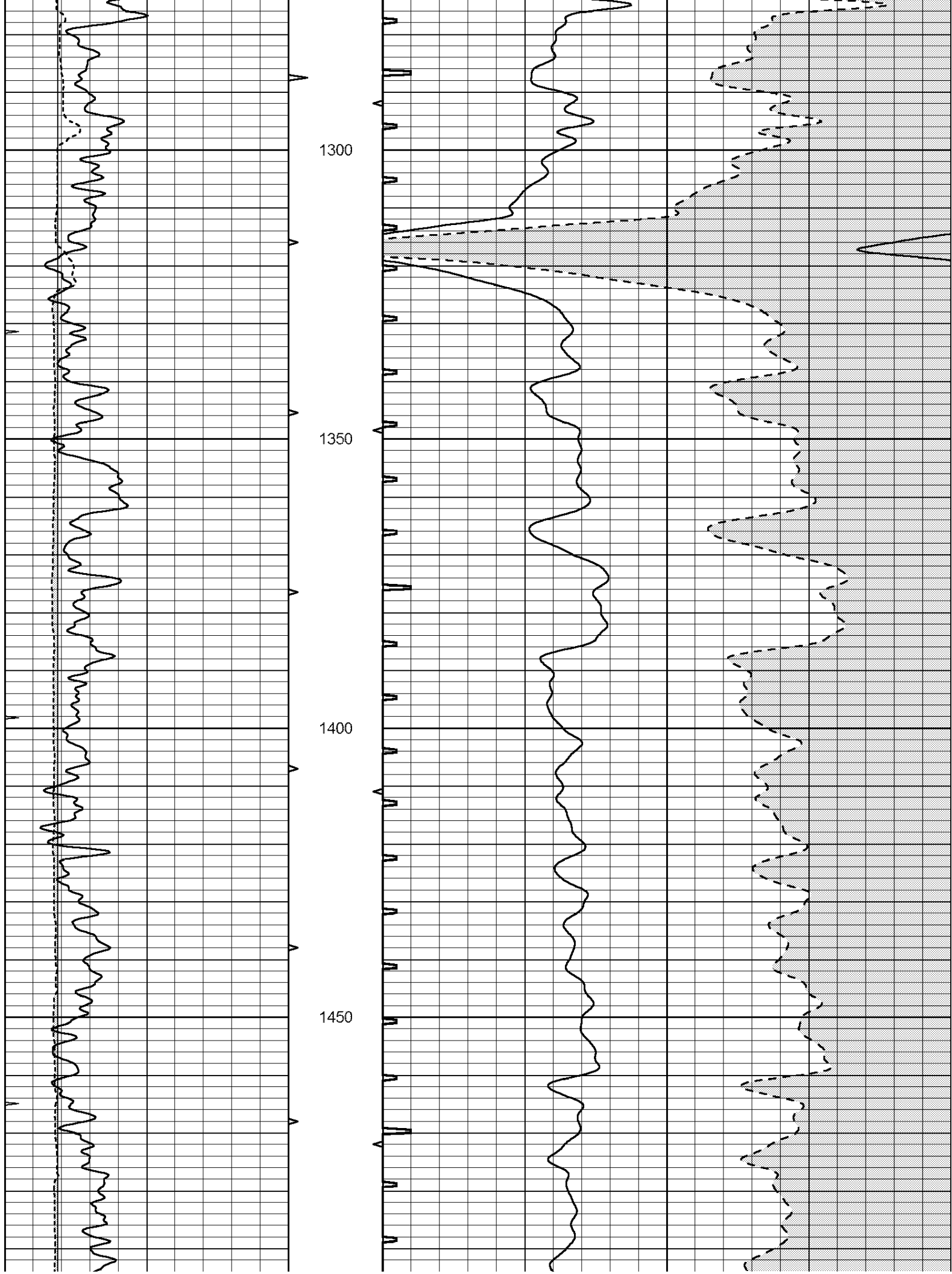
750

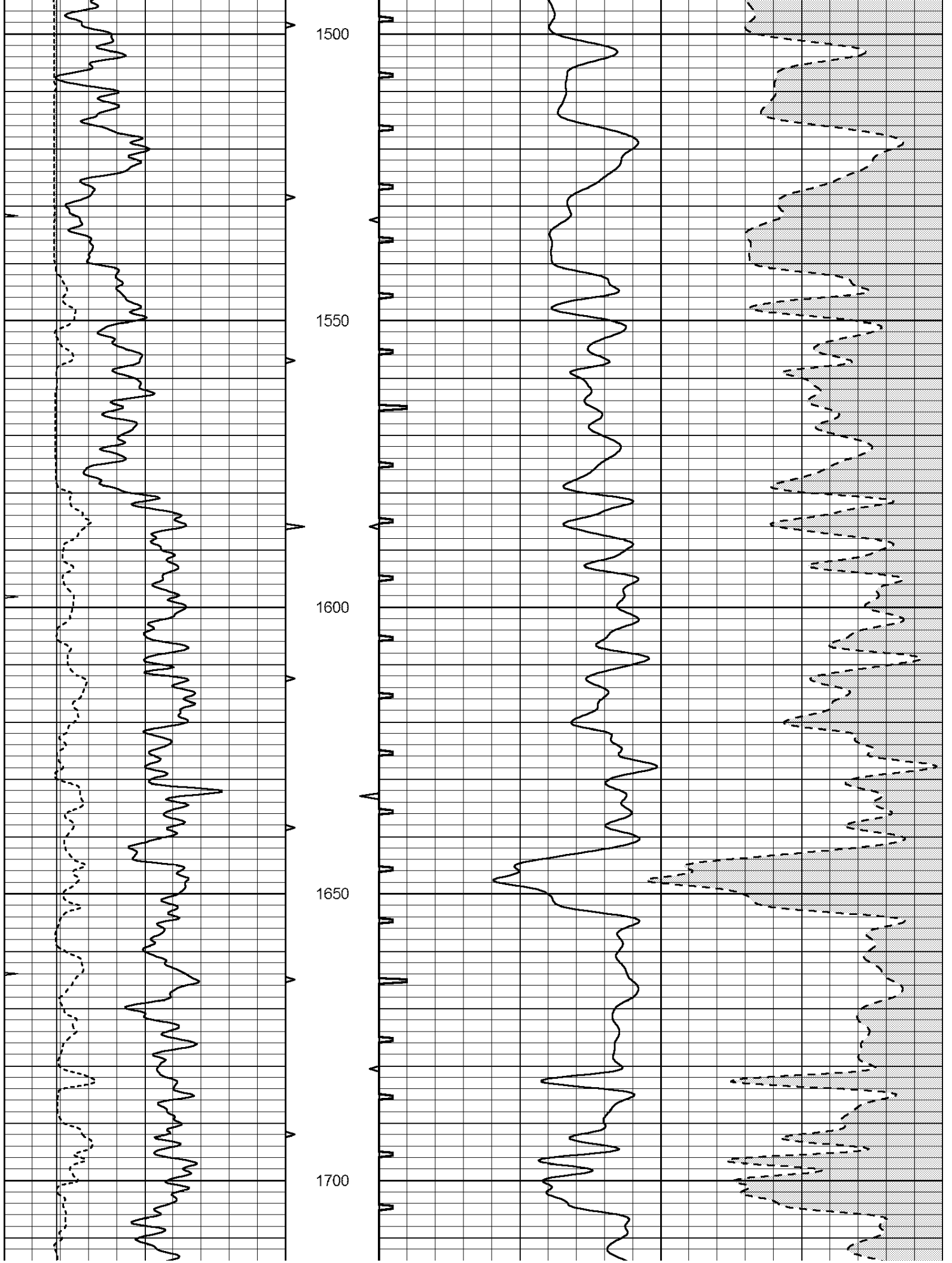
800

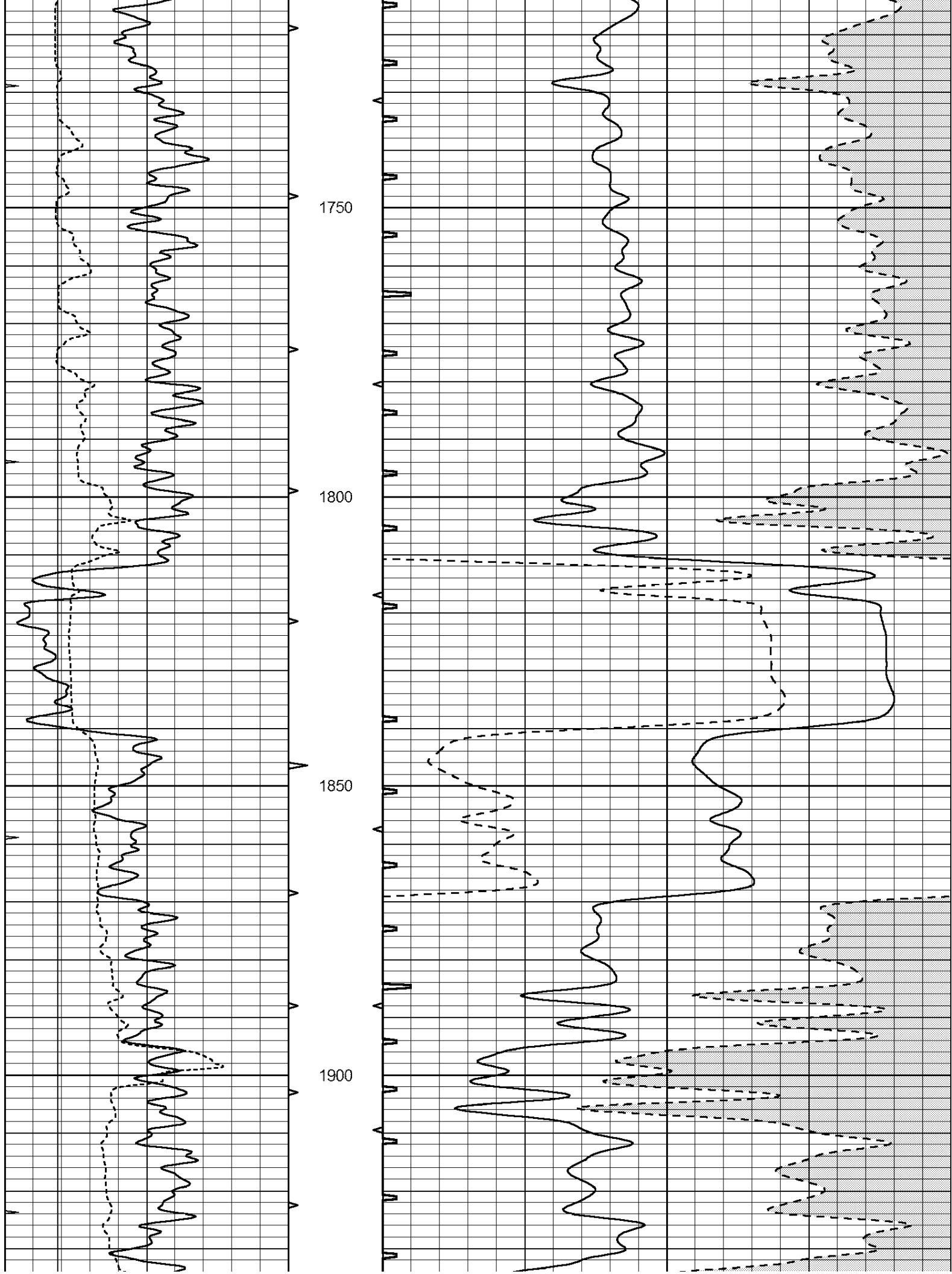


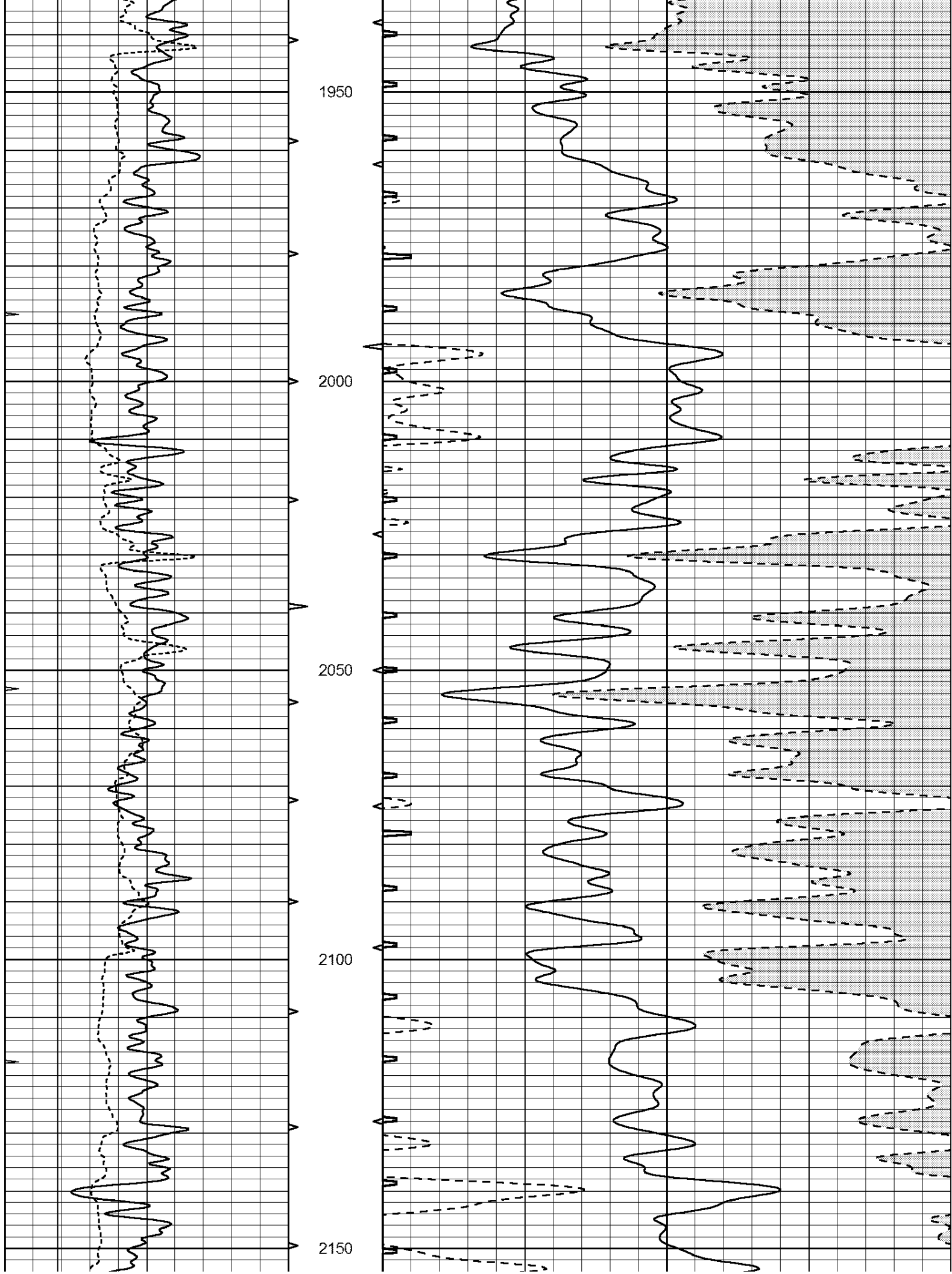


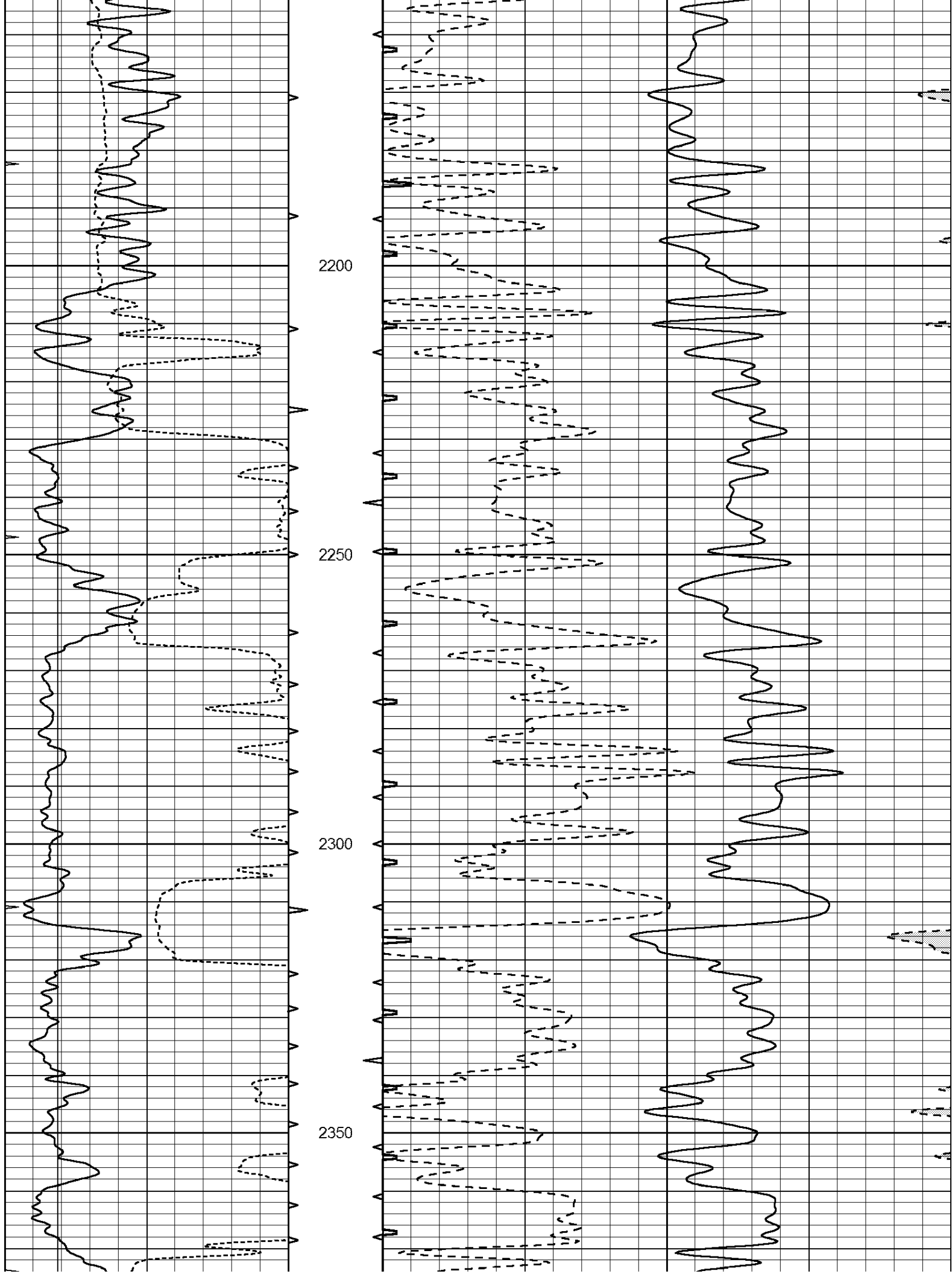


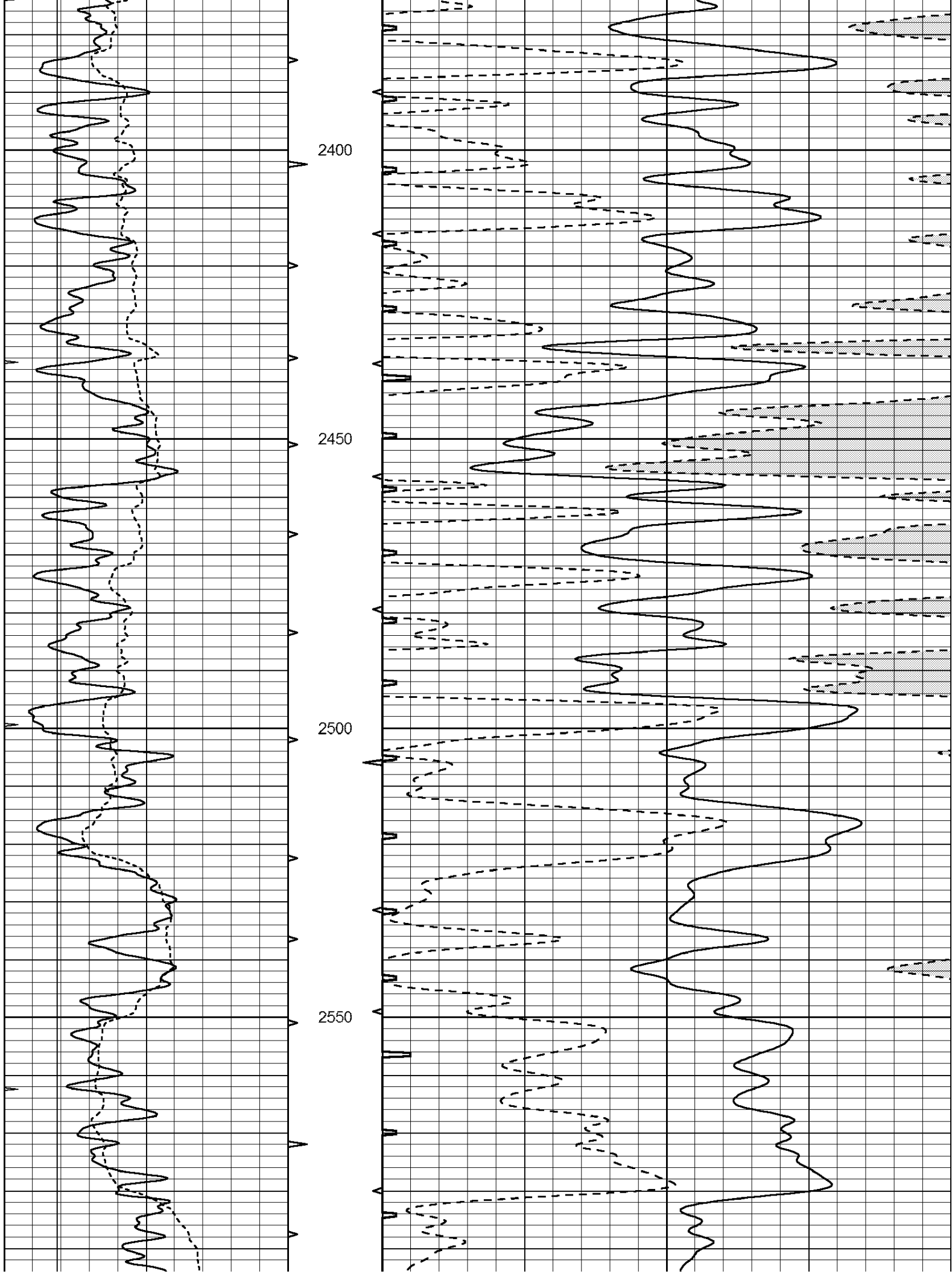


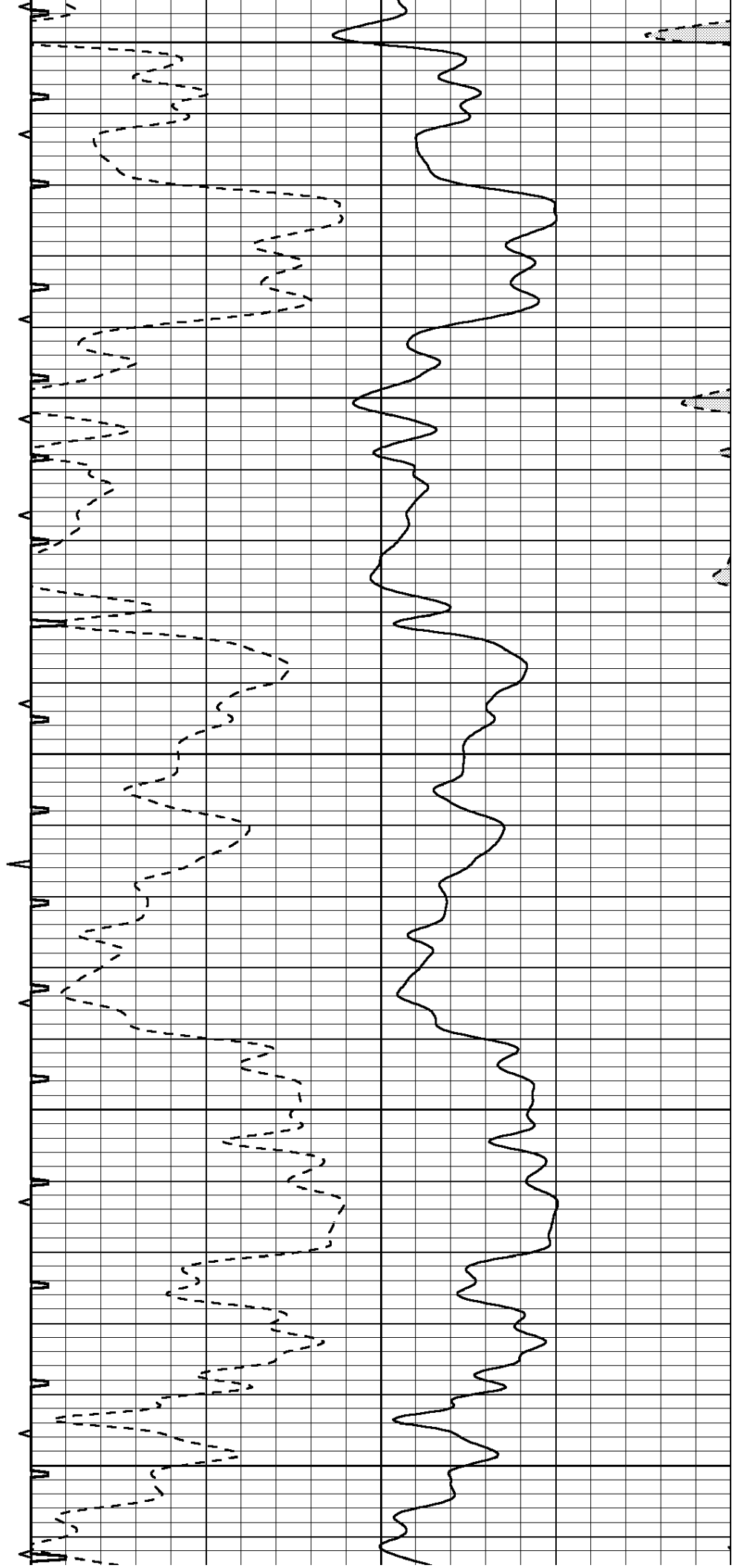
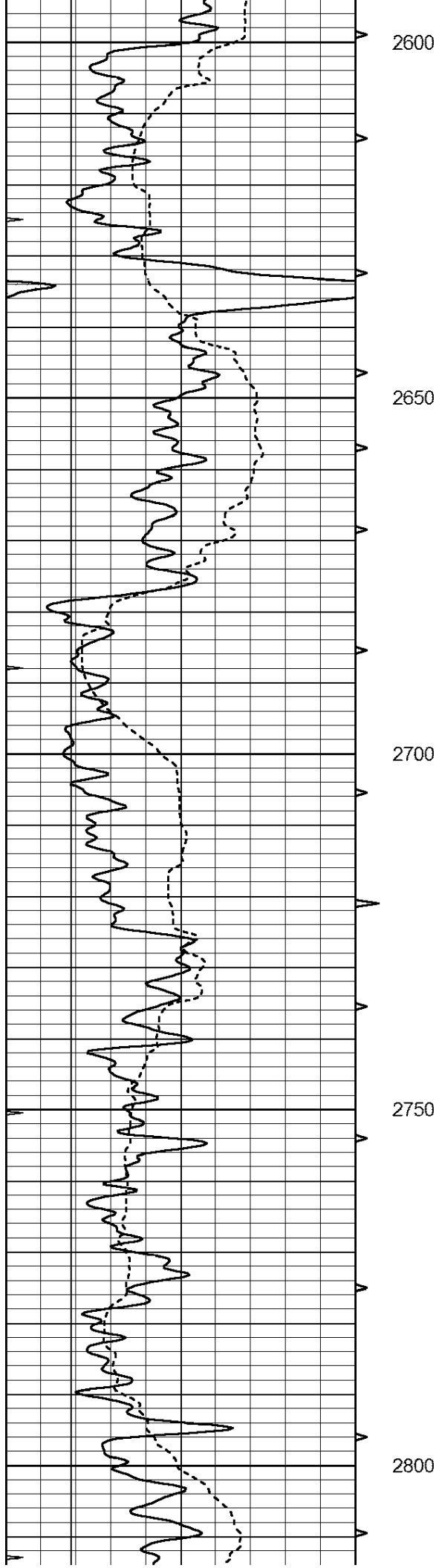


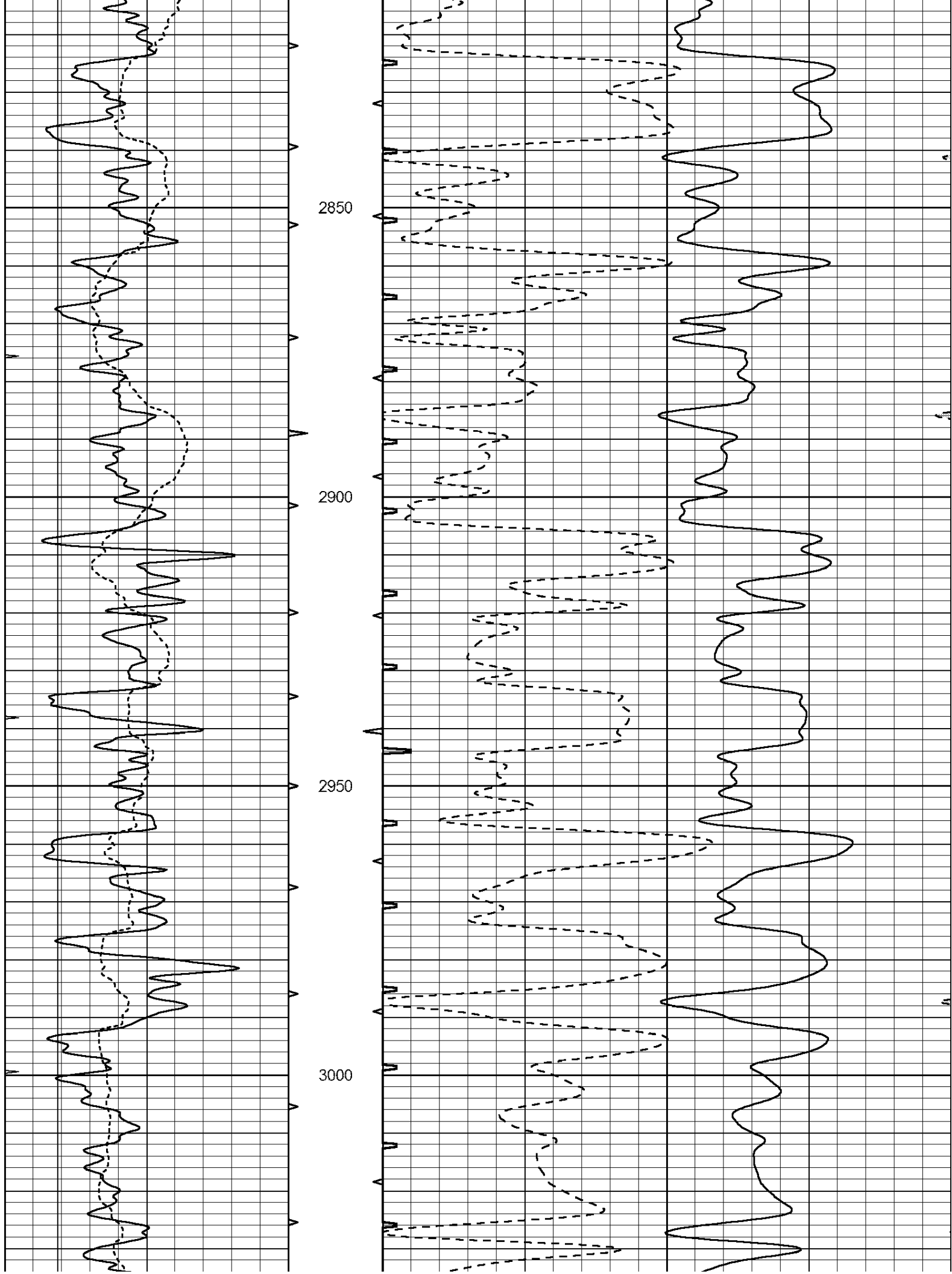


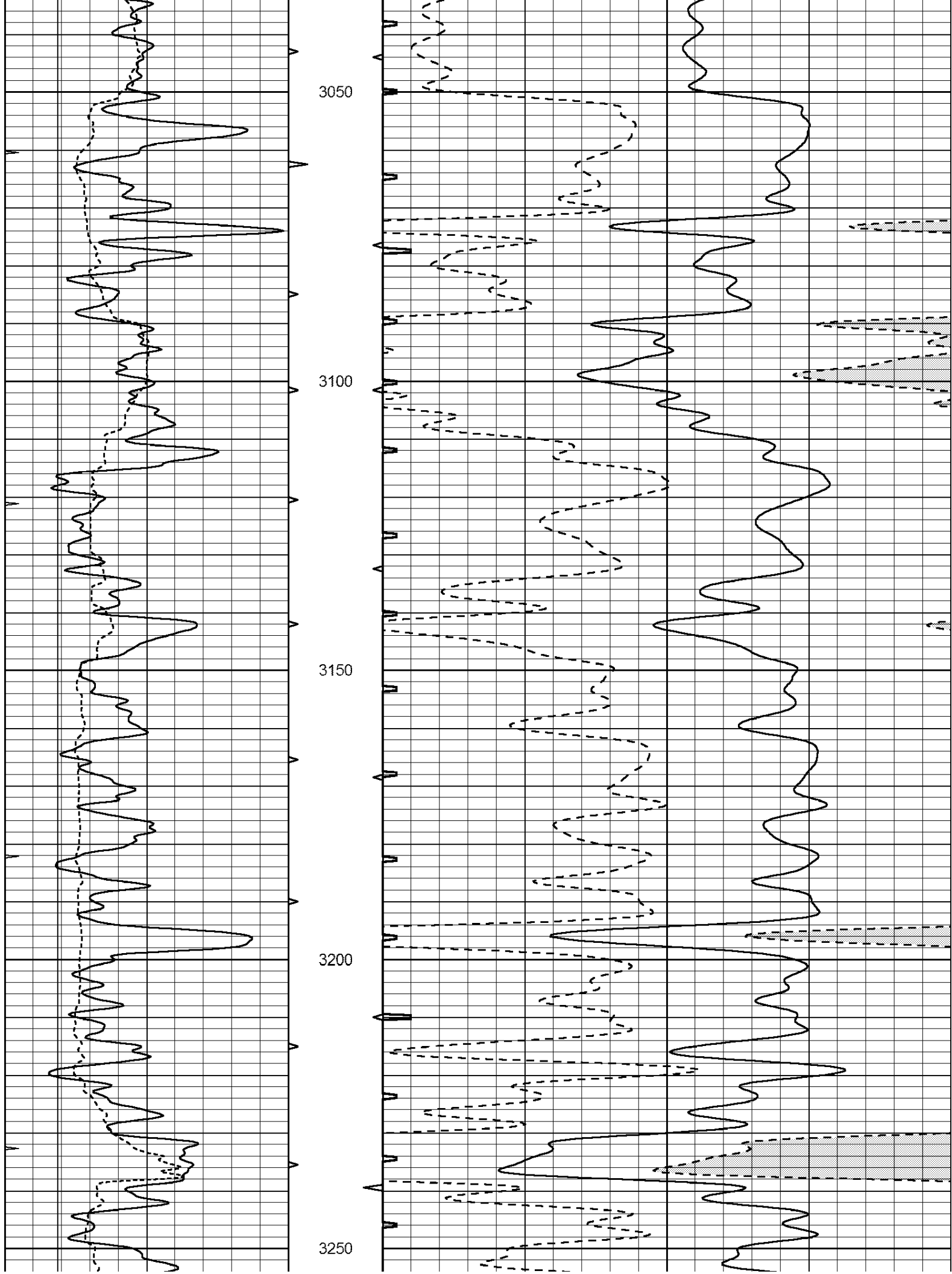


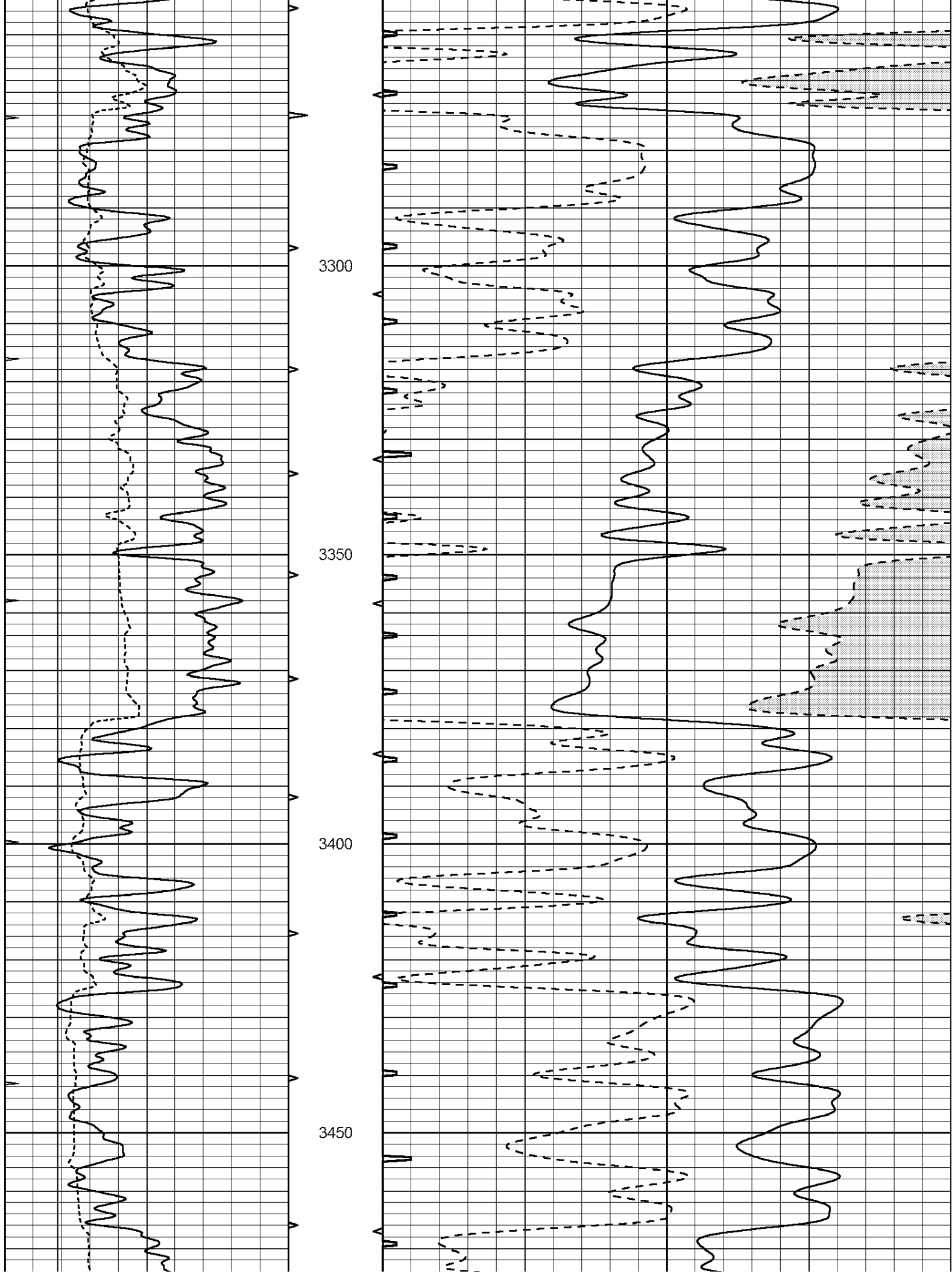


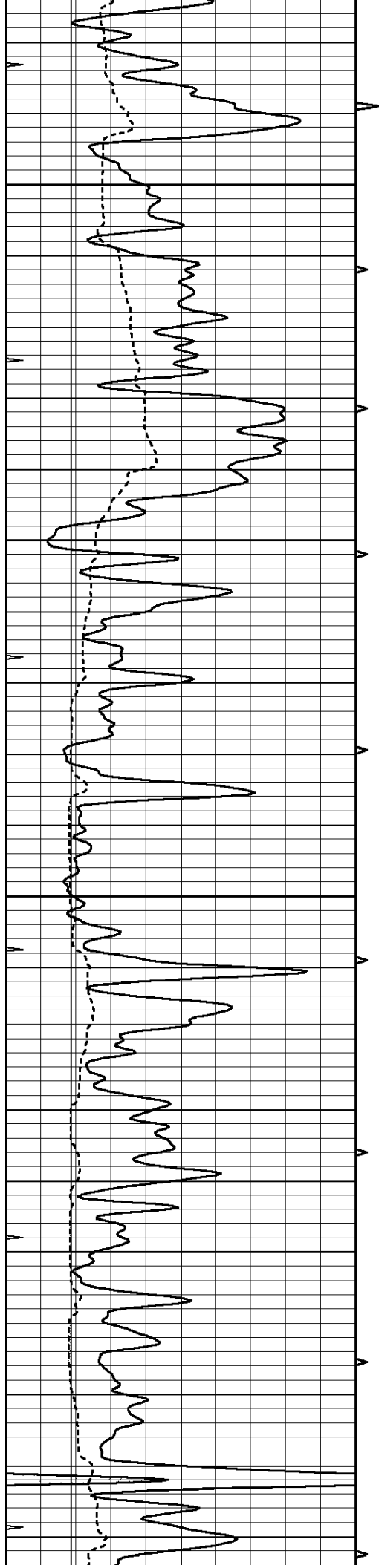










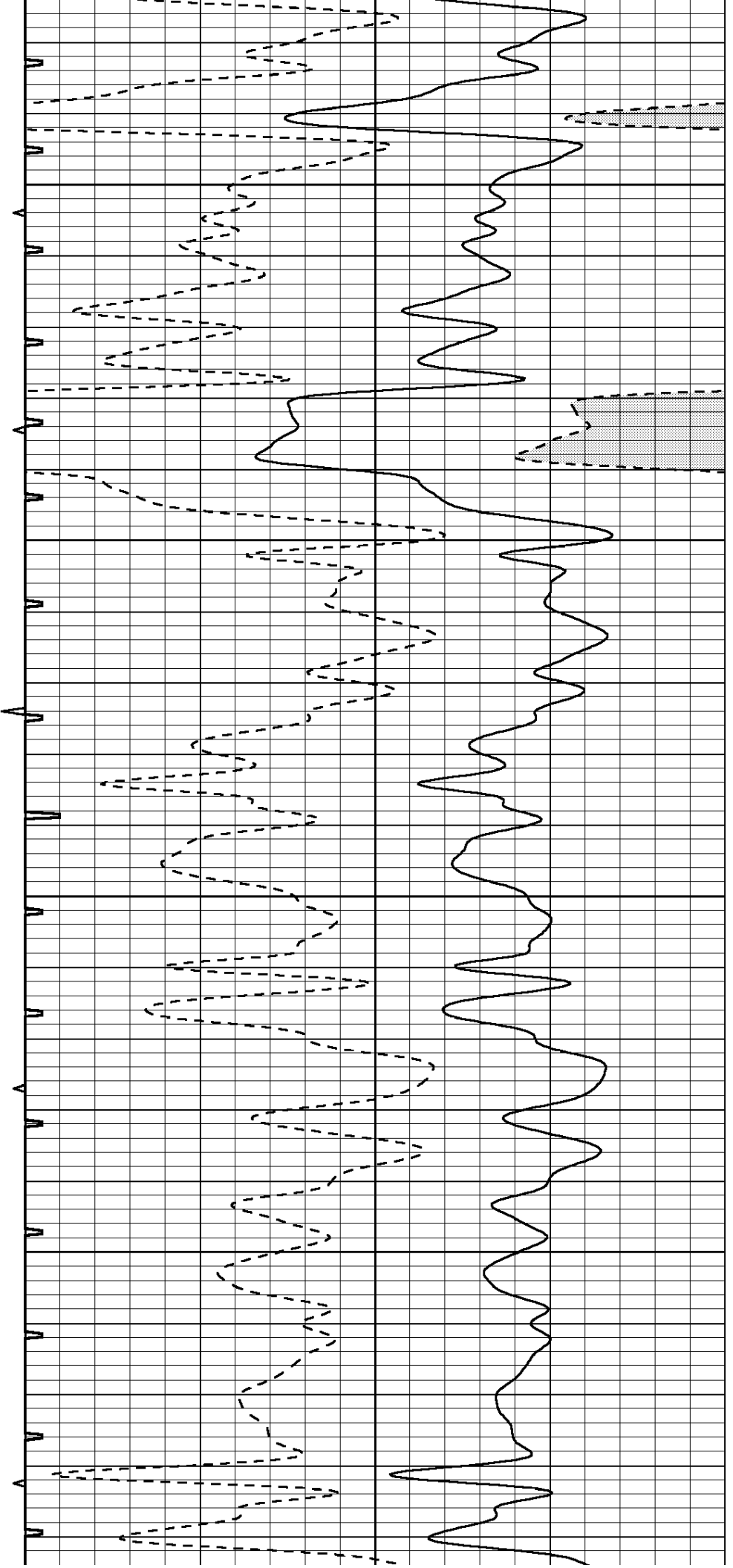


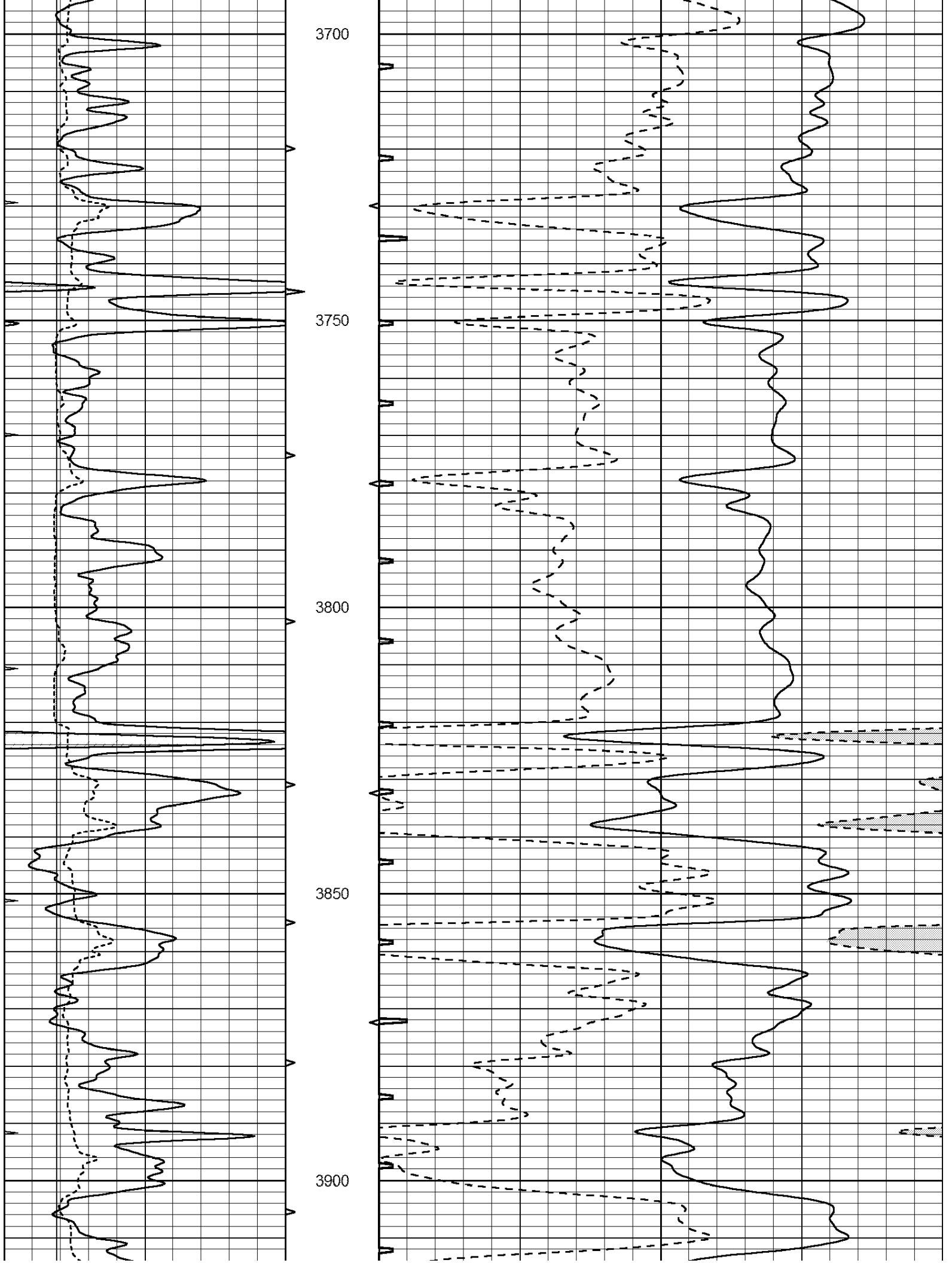
3500

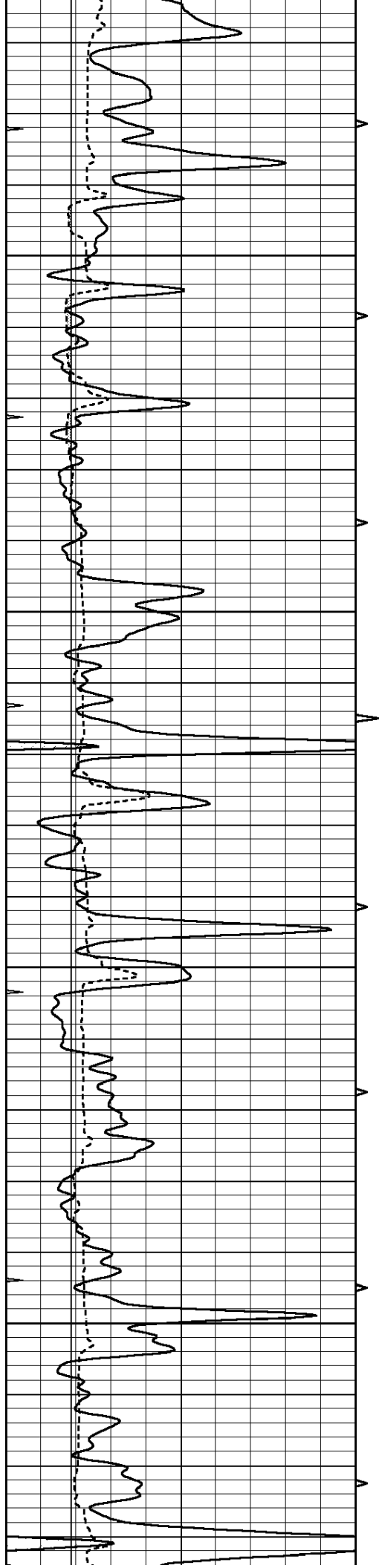
3550

3600

3650





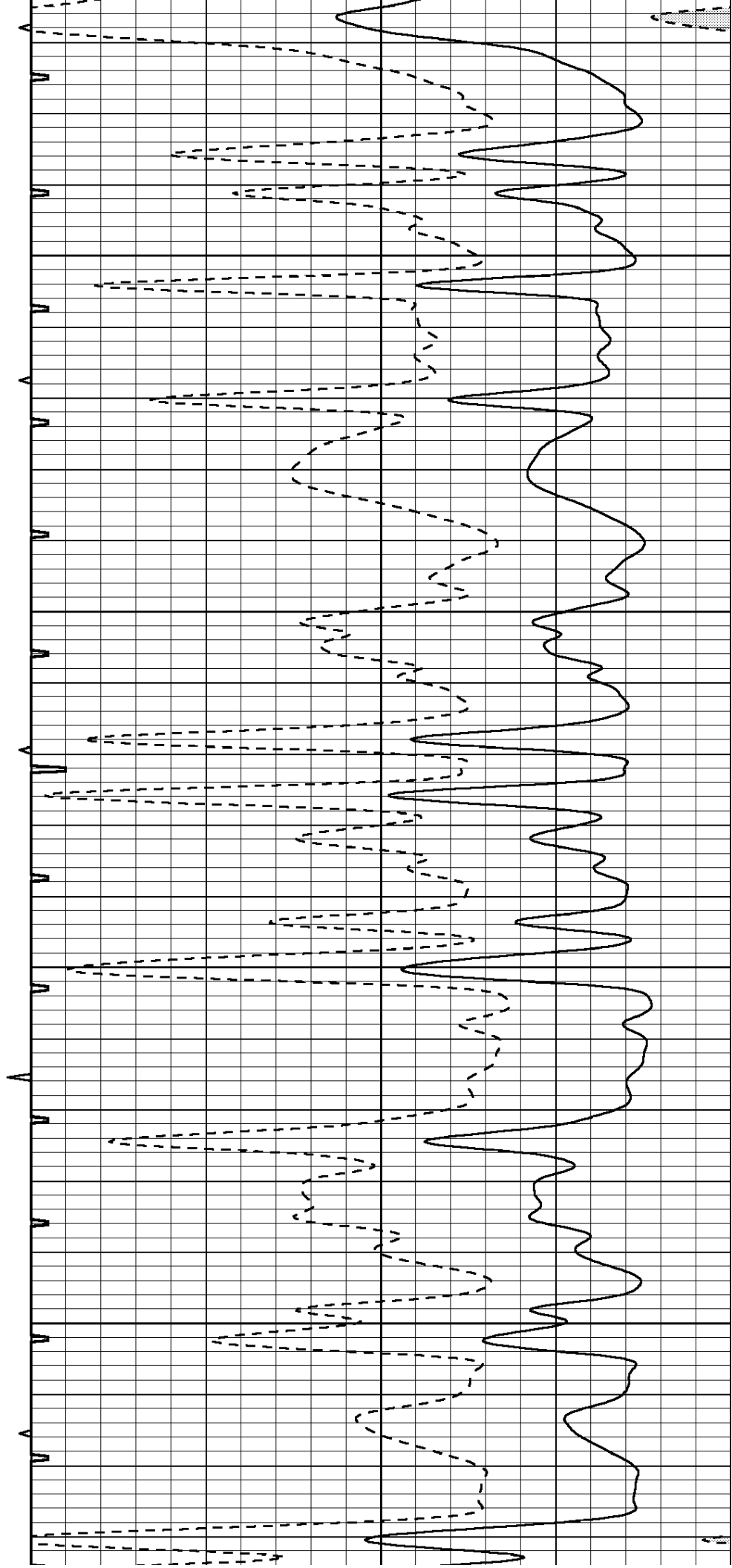


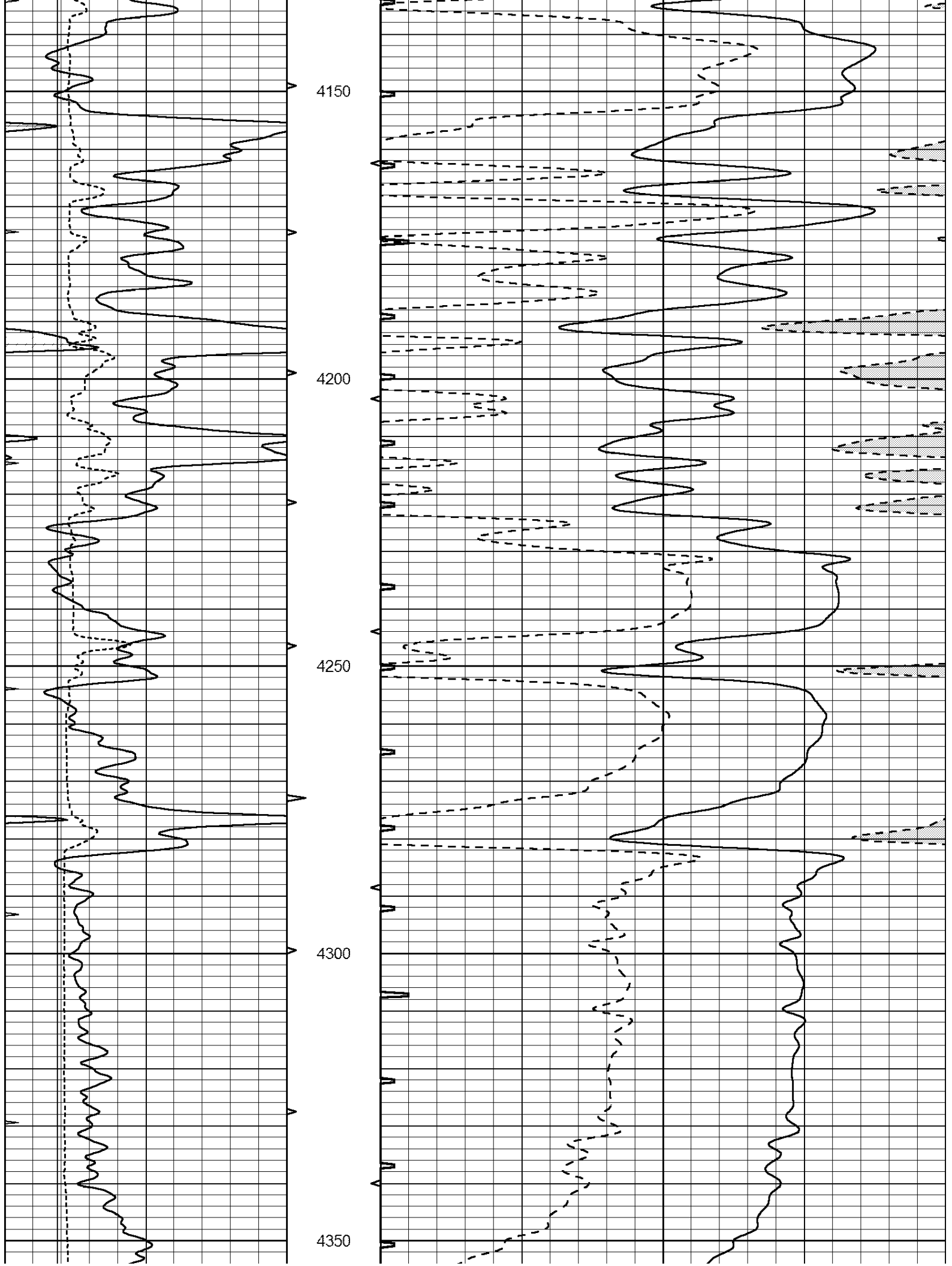
3950

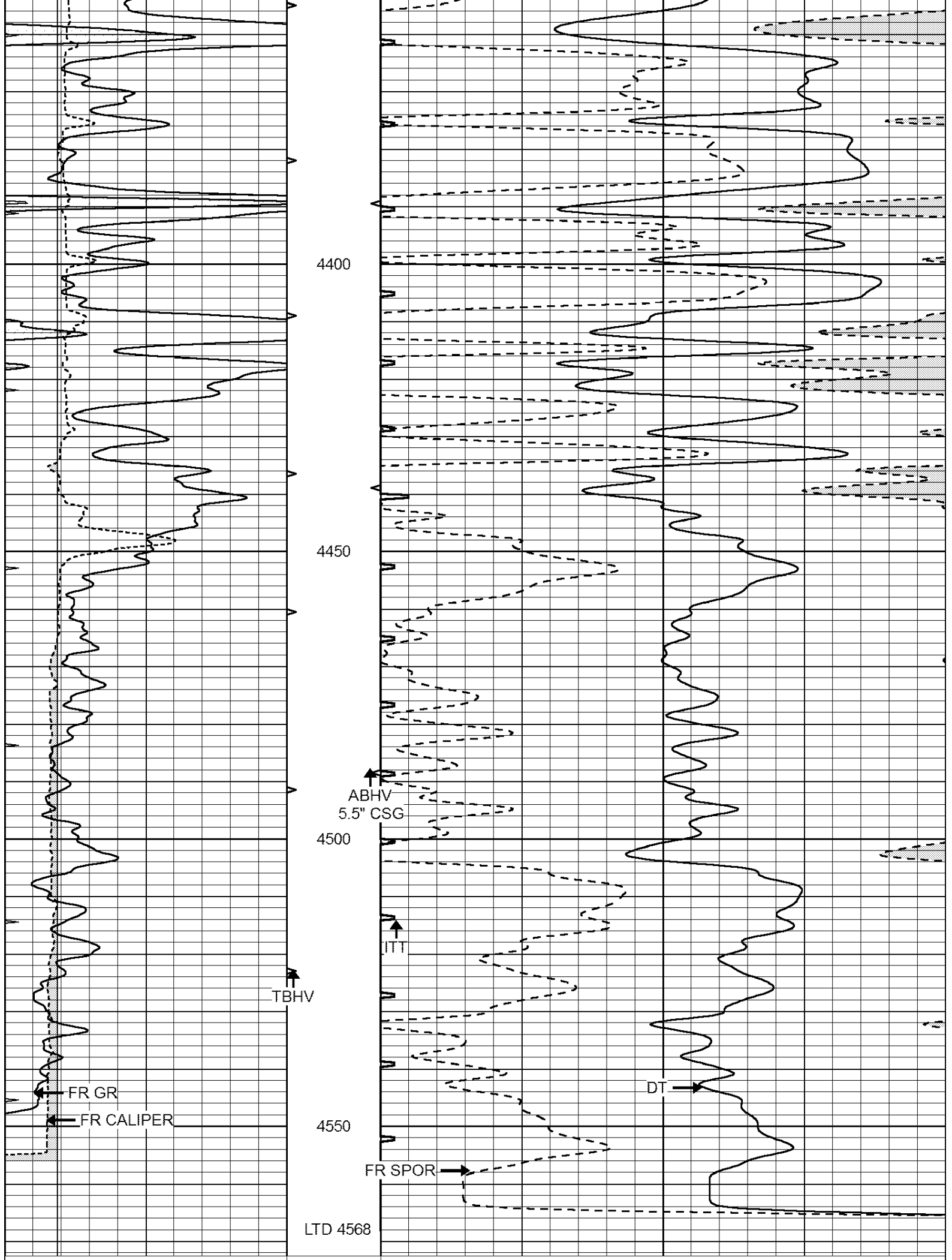
4000

4050

4100







4400

4450

4500

4550

LTD 4568

ABHV
5.5" CSG

ITT

TBHV

FR GR

FR CALIPER

DT

FR SPOR

0	GAMMA RAY (GAPI)	150	ABHV	140	DELTA TIME (usec/ft)	40	
6	CALIPER (in)	16	10 (ft3)	0	30	SONIC POROSITY (pu)	-10
0	MINMK	20	TBHV	0	ITT (msec)	20	
			0 (ft3)	10			

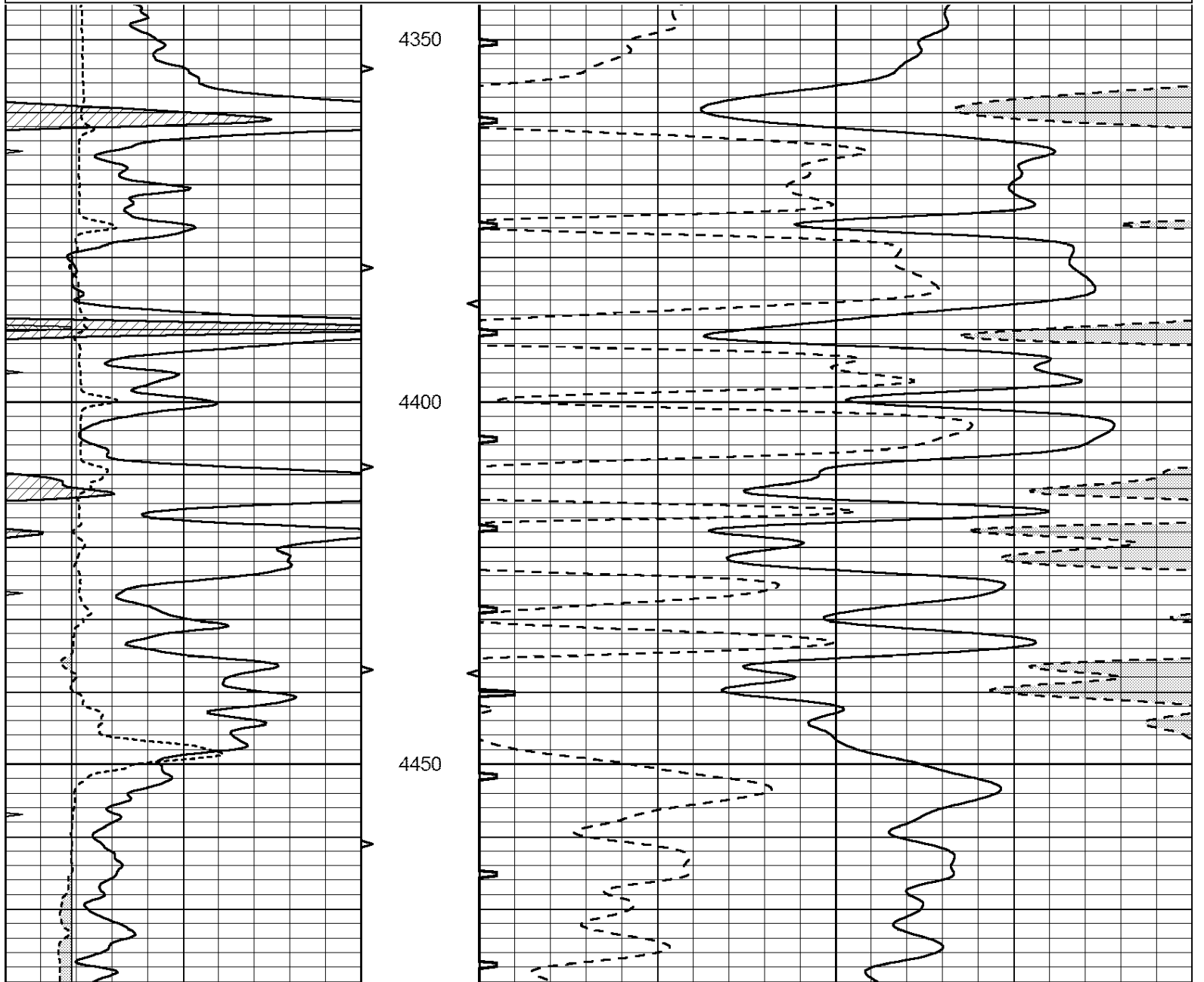


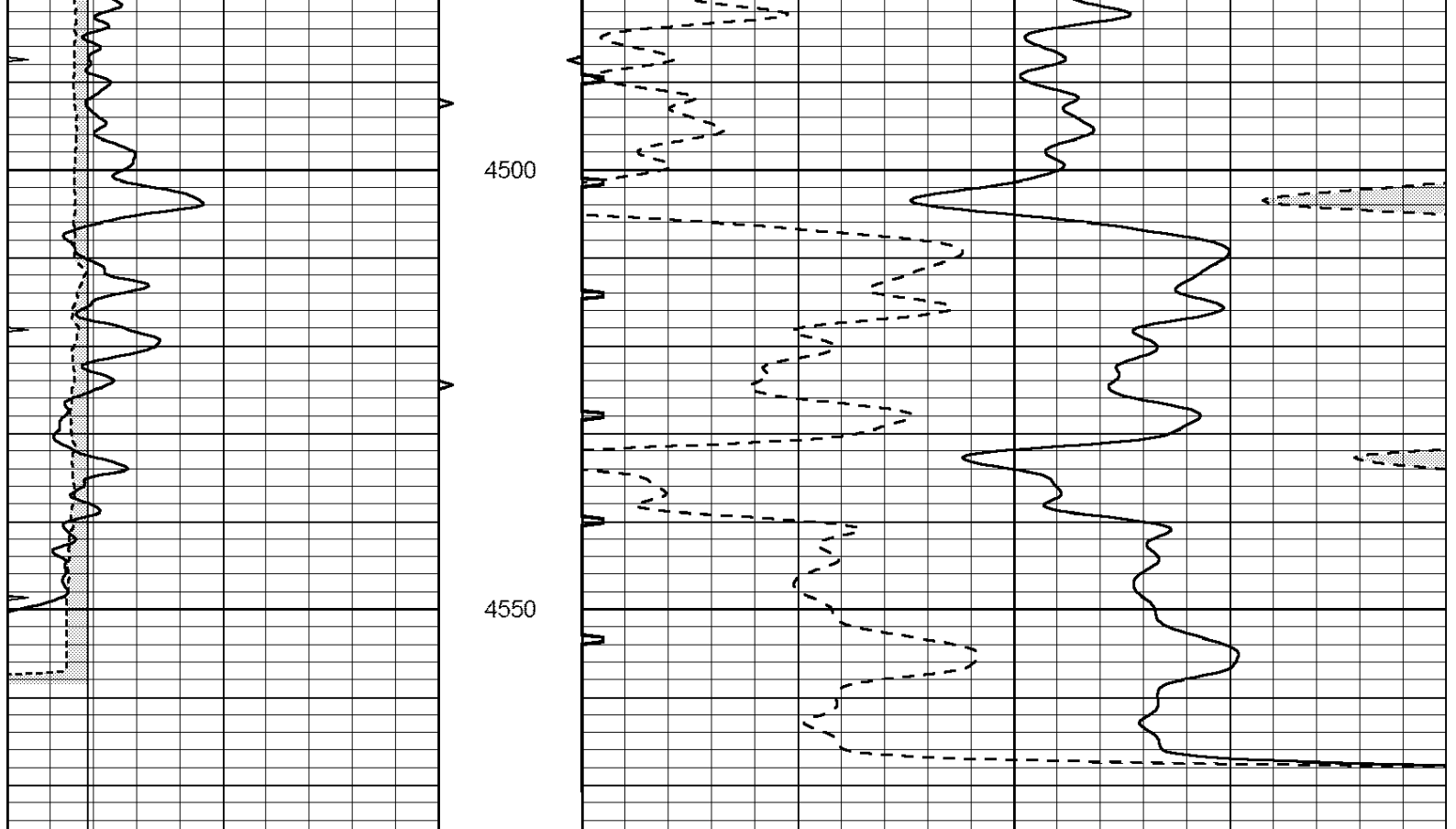
**COMPLETION
& PRODUCTION
SERVICES CO.**

REPEAT SECTION

Database File: 011595pe.db
 Dataset Pathname: pass5.1
 Presentation Format: _slt
 Dataset Creation: Fri Aug 30 01:47:53 2013 by Calc Open-Cased 090629
 Charted by: Depth in Feet scaled 1:240

0	GAMMA RAY (GAPI)	150	ABHV	140	DELTA TIME (usec/ft)	40	
6	CALIPER (in)	16	10 (ft3)	0	30	SONIC POROSITY (pu)	-10
0	MINMK	20	TBHV	0	ITT (msec)	20	
			0 (ft3)	10			





0	GAMMA RAY (GAPI)	150	ABHV	140	DELTA TIME (usec/ft)	40	
6	CALIPER (in)	16	10 (ft3)	0	30	SONIC POROSITY (pu)	-10
0	MINMK	20	TBHV	0	ITT (msec)	20	
			0 (ft3)	10			