



**COMPLETION
& PRODUCTION
SERVICES CO.**

**MICRO
LOG**

Company	MULL DRILLING COMPANY, INC.	Company	MULL DRILLING COMPANY, INC.
Well	#1-5 SOMY	Well	#1-5 SOMY
Field		Field	
County	NESS	County	NESS
State	KANSAS	State	KANSAS
Location:	600' FSL & 2310' FWL	AP1 # :	15-135-25640-0000
Permanent Datum	GROUND LEVEL	Elevation	2465
Log Measured From	KELLY BUSHING 5' A.G.L.	Other Services	CDL/CNL/PE DIL/SON
Drilling Measured From	KELLY BUSHING	Elevation	K.B. 2470 D.F. 2468 G.L. 2465
SEC 5 TWP 17S RGE 24W			

Date	8/29/13
Run Number	TWO
Depth Driller	4570
Depth Logger	4568
Bottom Logged Interval	4550
Top Log Interval	3700
Casing Driller	8 5/8" @ 215'
Casing Logger	213'
Bit Size	7 7/8"
Type Fluid in Hole	CHEMICAL MUD
Density / Viscosity	8.9 / 47
pH / Fluid Loss	11.0 / 7.8
Source of Sample	FLOWLINE
Rm @ Meas. Temp	0.90 @ 88F
Rmt @ Meas. Temp	0.68 @ 88F
Rmc @ Meas. Temp	1.08 @ 88F
Source of Rmf / Rmc	MEASUREMENT
Rm @ BHT	0.65 @ 121F
Time Circulation Stopped	2 HOURS
Time Logger on Bottom	
Maximum Recorded Temperature	121F
Equipment Number	4010
Location	HAYS, KANSAS
Recorded By	JEFF GRONEWEG
Witnessed By	KEVIN KESSLER

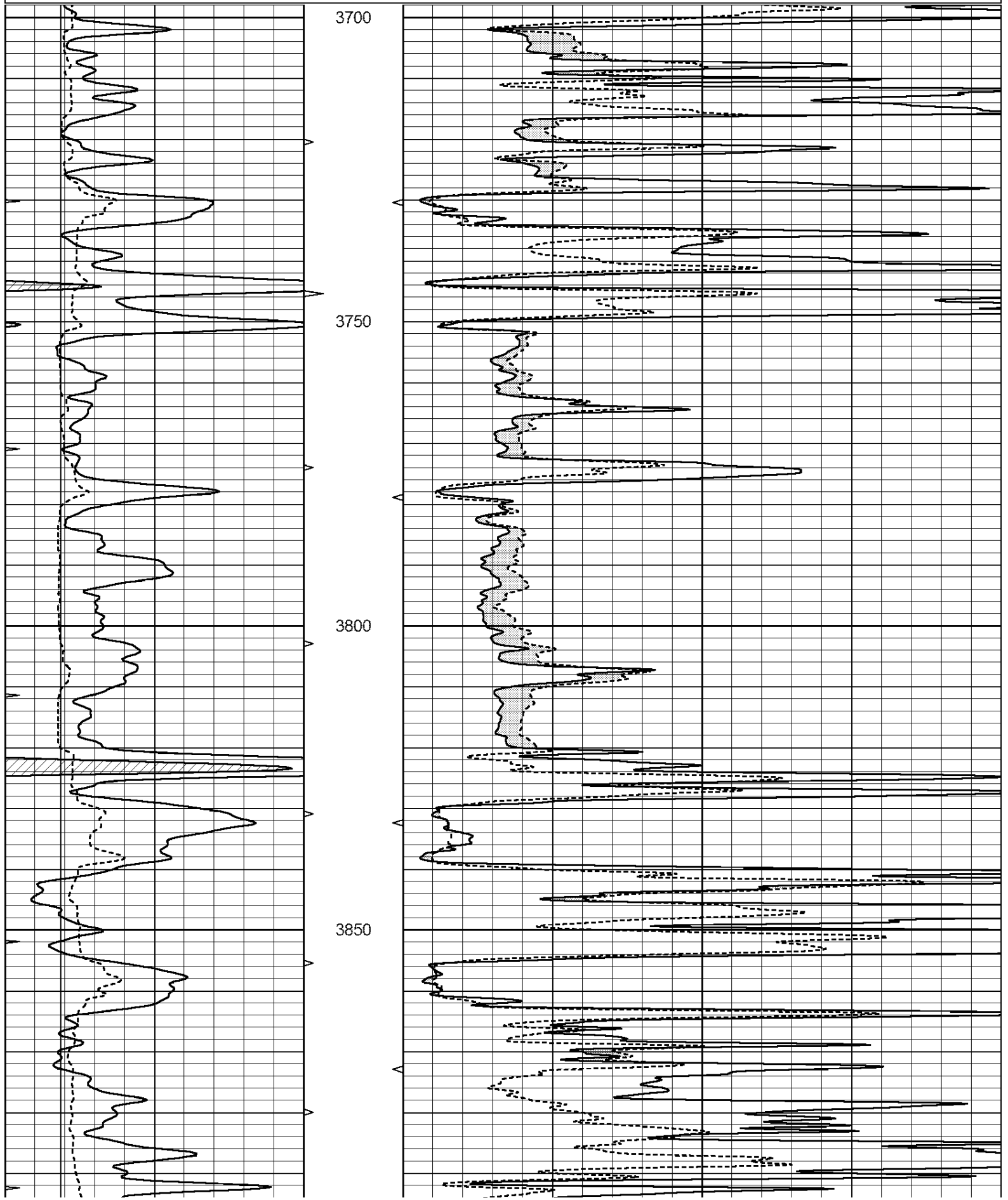
<<< Fold Here >>>

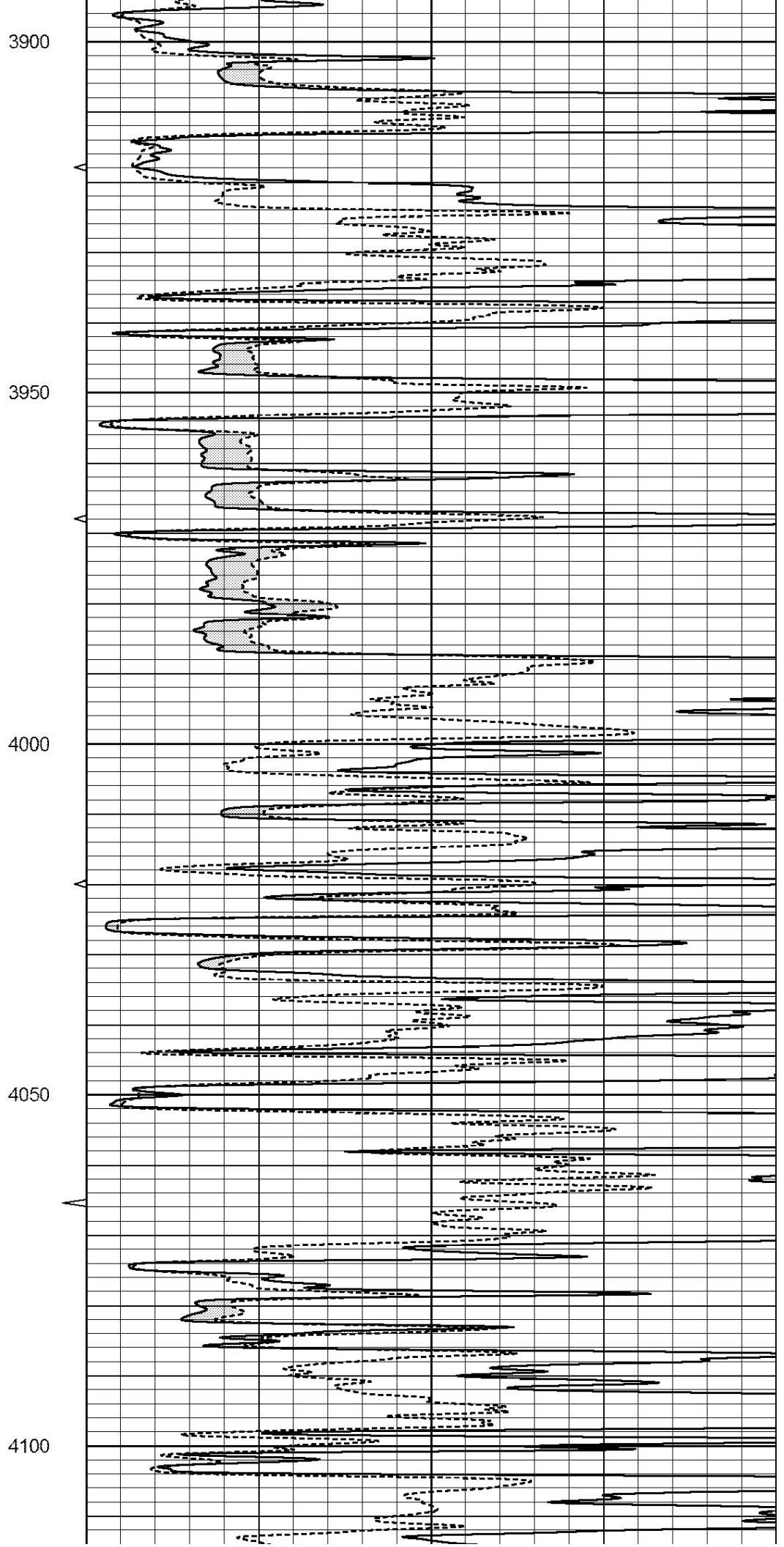
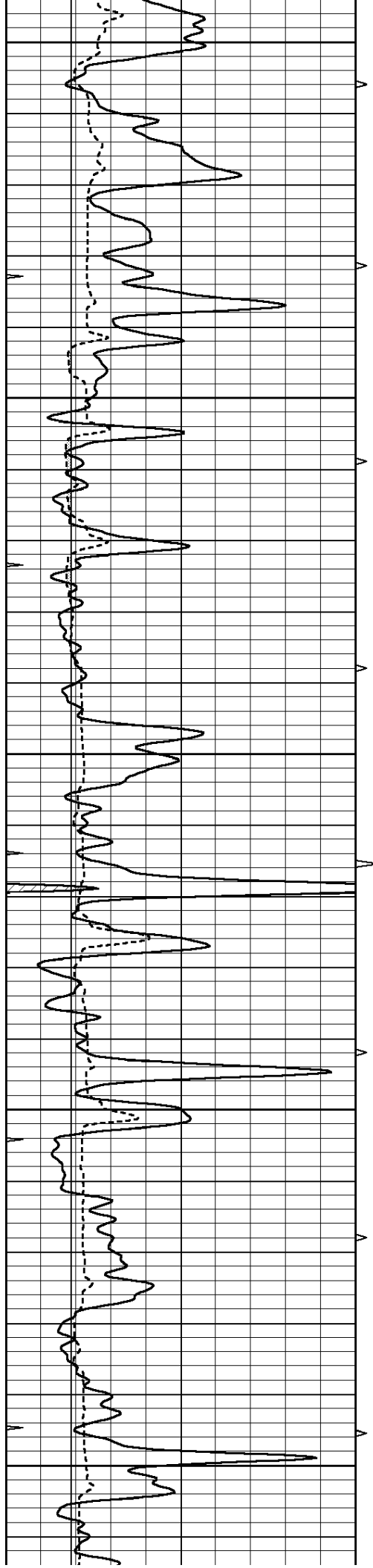
All interpretations are opinions based on inferences from electrical or other measurements and we cannot and do not guarantee the accuracy or correctness of any interpretation, and we shall not, except in the case of gross or willful negligence on our part, be liable or responsible for any loss, costs, damages, or expenses incurred or sustained by anyone resulting from any interpretation made by any of our officers, agents or employees. These interpretations are also subject to our general terms and conditions set out in our current Price Schedule.

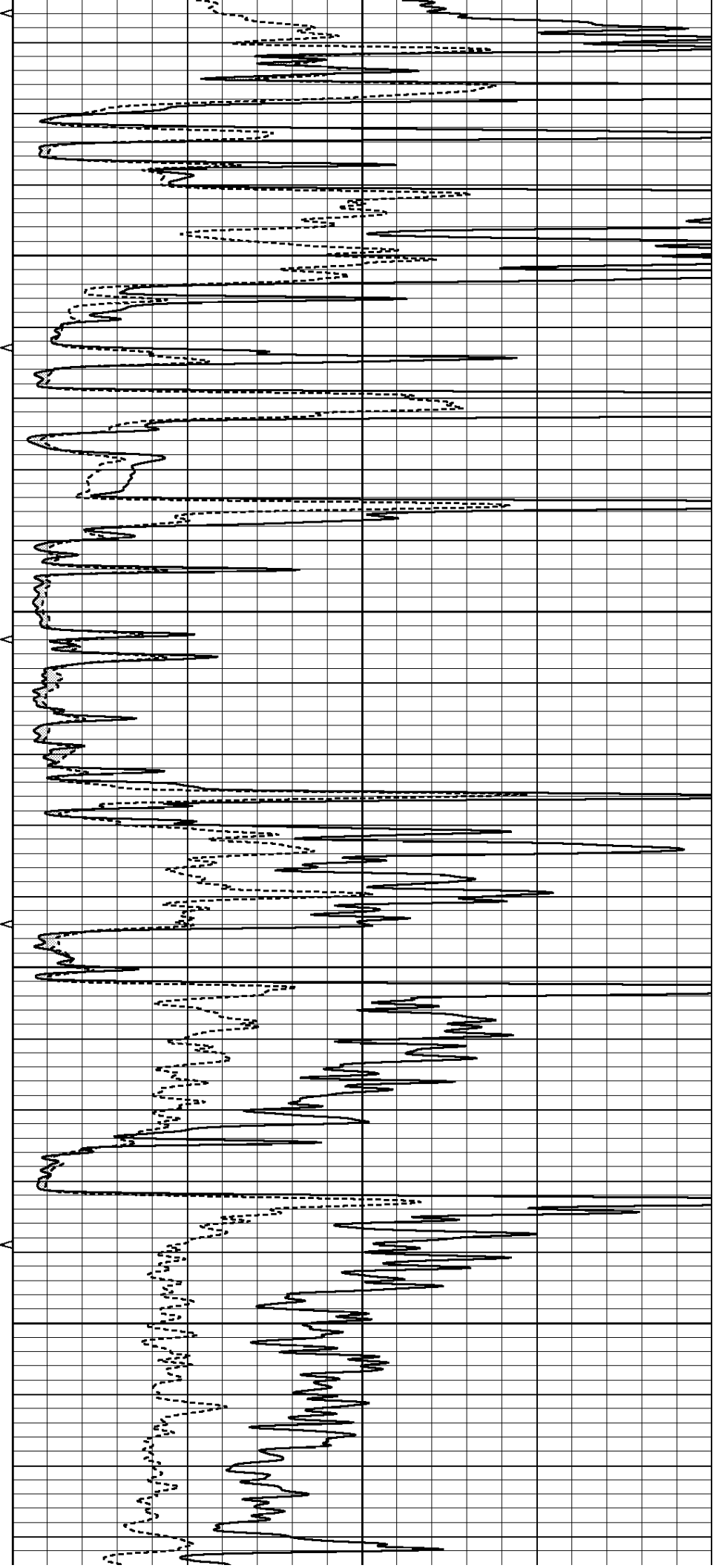
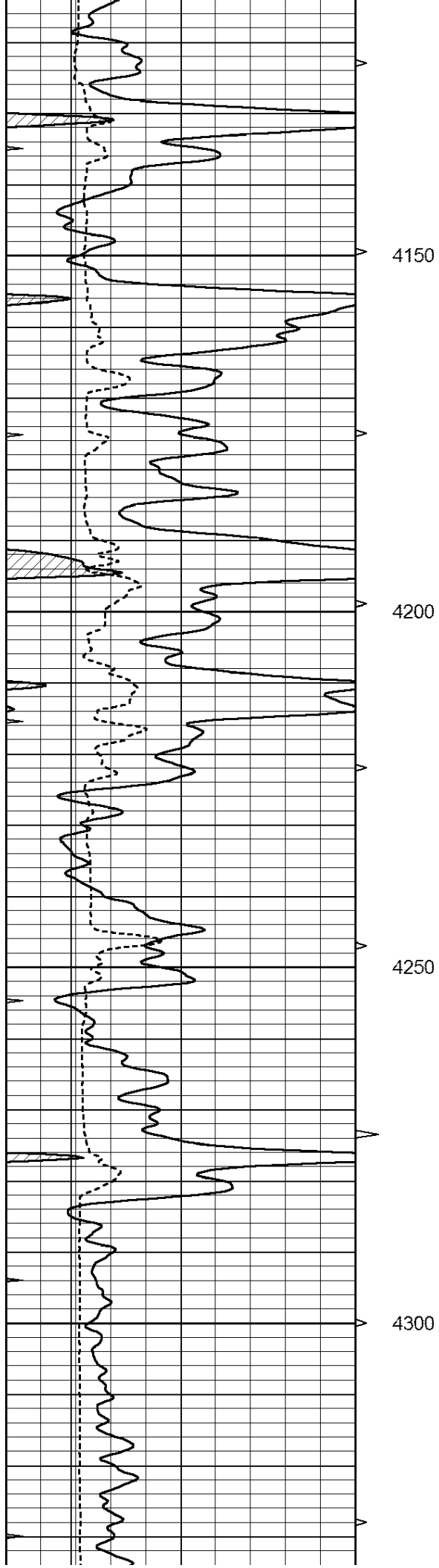
Comments

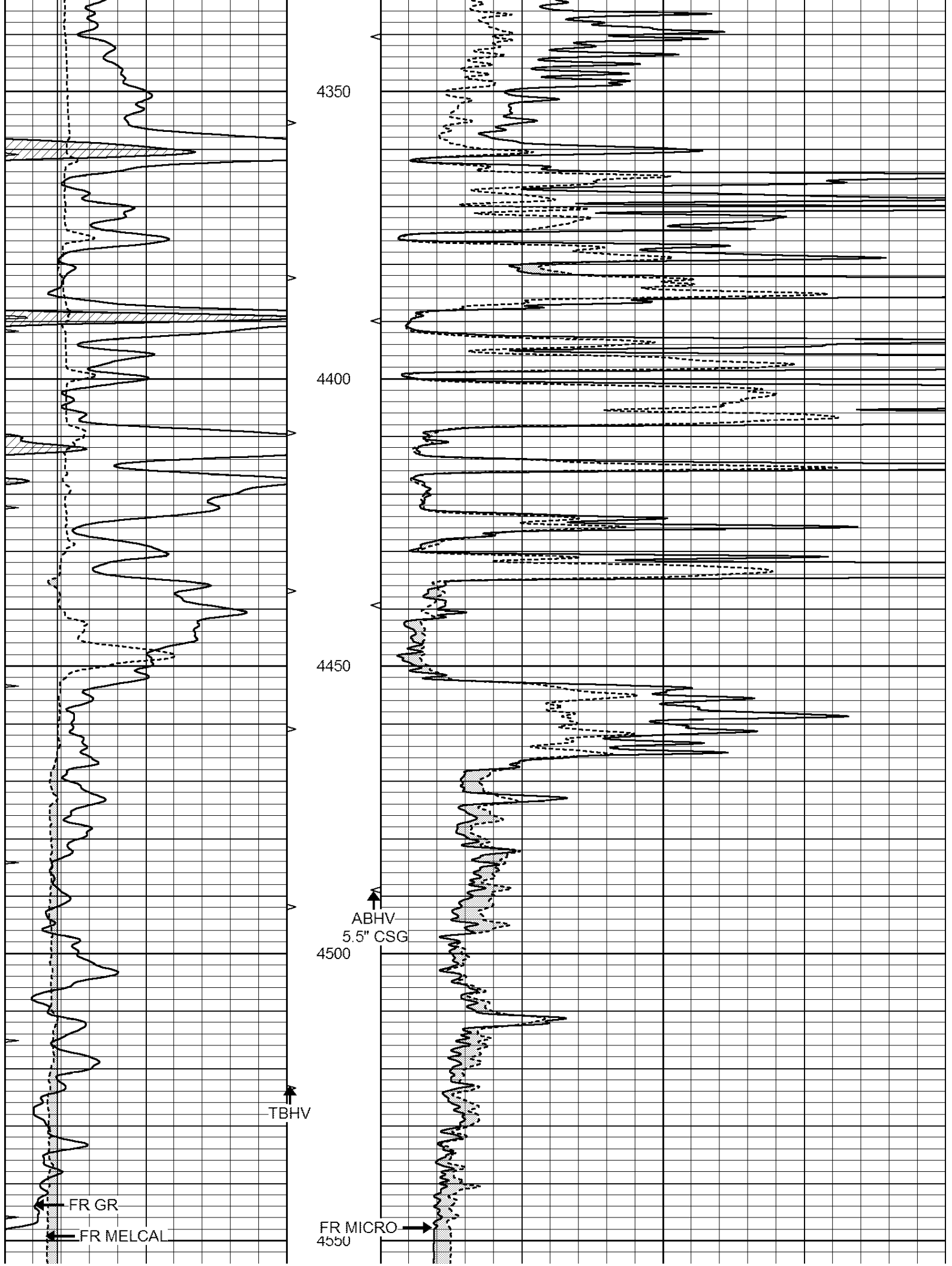
THANK YOU FOR USING NABORS, HAYS, KS. (785) 628-6395
 DIRECTIONS:
 INTERSECTION OF HWYS 283 & 4 - 3 MILES SOUTH TO RD 230 - 4 1/2 MILES WEST
 NORTH INTO

0	GAMMA RAY (GAPI)	150	ABHV	0	MEL1.5 (Ohm-m)	40
6	CALIPER (in)	16	10 (ft3)	0	MEL2.0 (Ohm-m)	40
0	MINMK	20	TBHV			
			0 (ft3)	10		









LTD 4568

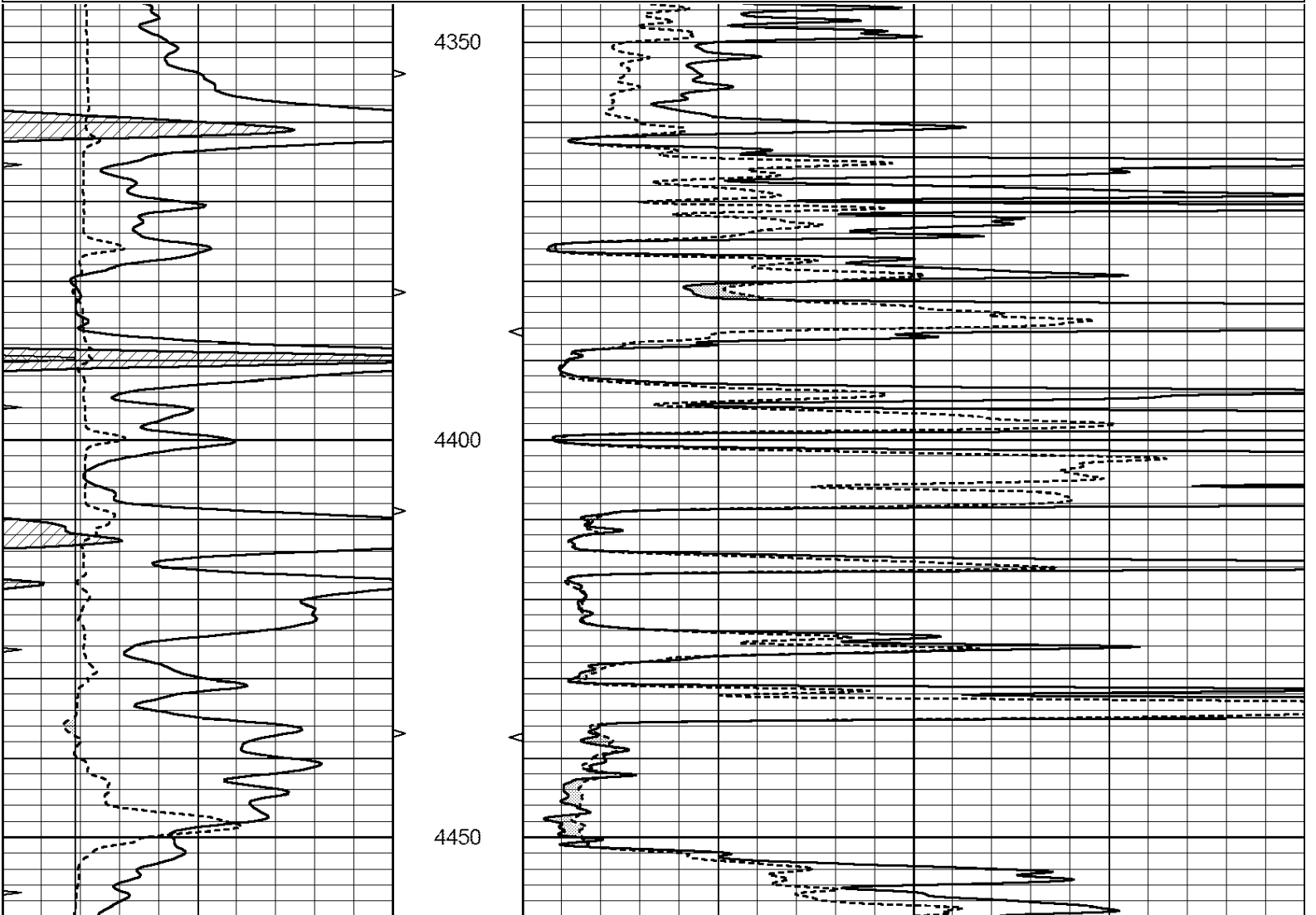
0	GAMMA RAY (GAPI)	150	ABHV	0	MEL1.5 (Ohm-m)	40
6	CALIPER (in)	16	10 (ft3)	0	MEL2.0 (Ohm-m)	40
0	MINMK	20	TBHV			
			0 (ft3)	10		

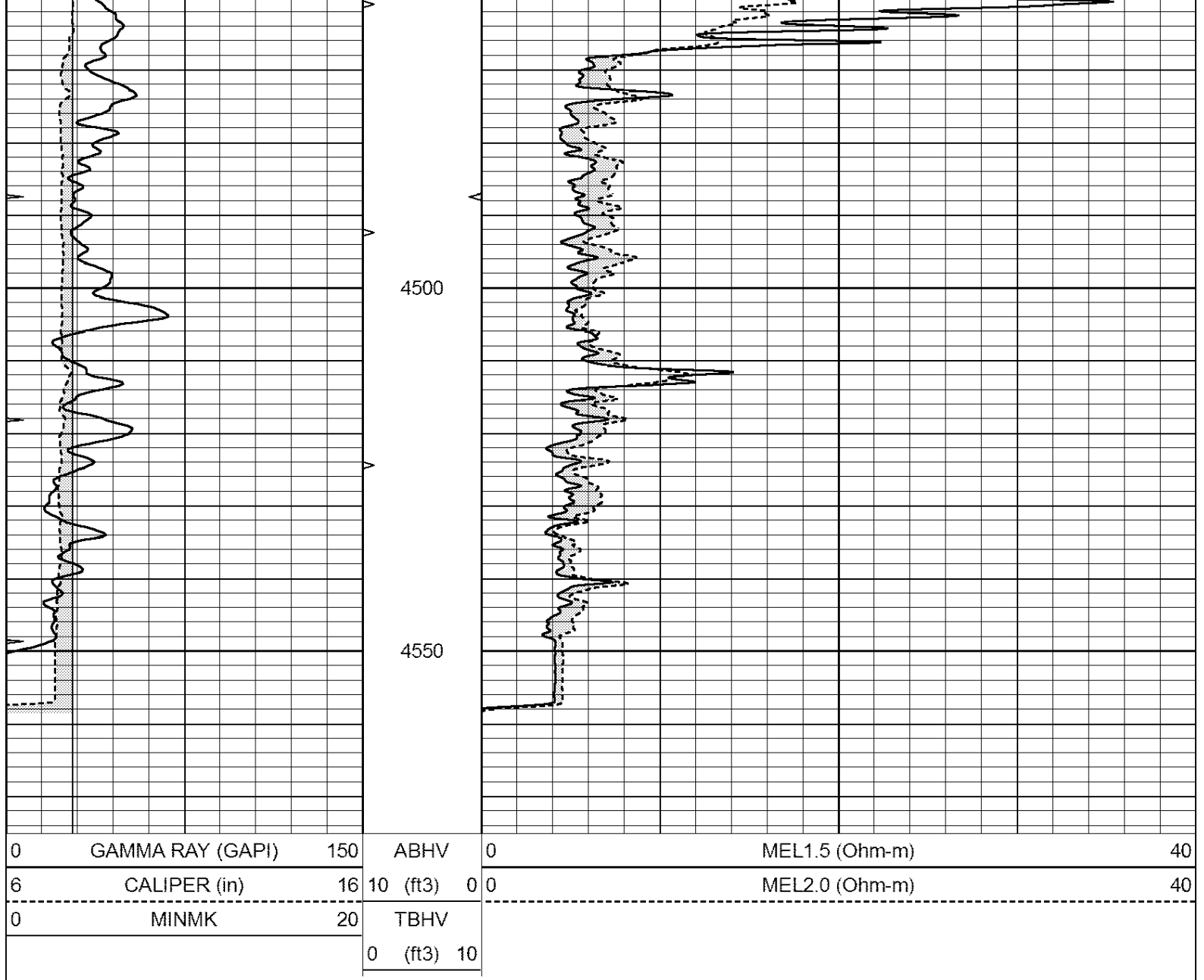


REPEAT SECTION

Database File: 011595pe.db
Dataset Pathname: pass5.1
Presentation Format: _micro
Dataset Creation: Fri Aug 30 01:47:53 2013 by Calc Open-Cased 090629
Charted by: Depth in Feet scaled 1:240

0	GAMMA RAY (GAPI)	150	ABHV	0	MEL1.5 (Ohm-m)	40
6	CALIPER (in)	16	10 (ft3)	0	MEL2.0 (Ohm-m)	40
0	MINMK	20	TBHV			
			0 (ft3)	10		





Calibration Report

Database File: 011595pe.db
 Dataset Pathname: pass6.1
 Dataset Creation: Fri Aug 30 01:44:40 2013 by Calc Open-Cased 090629

MICRO Calibration Report

Serial Number: MICRO6
 Tool Model: PROBE
 Performed: Sat Aug 10 00:21:37 2013

Caliper Calibration: Gain=5.542 Offset=-1.220
 References Low Cal High Cal
 Readings 8.000 14.000
 1.431 2.513

1.5" Calibration: Gain=30.075 Offset=-0.700
 References Low Cal High Cal
 Readings 0.000 20.000
 0.004 1.196

2" Calibration: Gain=38.041 Offset=0.000

References
Readings

Low Cal
0.000
0.006

High Cal
20.000
0.913

Gamma Ray Calibration Report

Serial Number:
Tool Model:
Performed:

#8
OPEN
Tue Jun 18 19:34:11 2013

Calibrator Value:

150.0 GAPI

Background Reading:
Calibrator Reading:

0.0 cps
175.0 cps

Sensitivity:

0.8371 GAPI/cps