



**COMPLETION
& PRODUCTION
SERVICES CO.**

**MICRO
LOG**

Company HERMAN L. LOEB, LLC.
Well MUSSELMAN #5-34
Field LARNED
County PAWNEE
State KANSAS

Company HERMAN L. LOEB, LLC.
Well MUSSELMAN #5-34
Field LARNED
County PAWNEE State KANSAS

Location: API # : 15-145-21727-0000
335' FSL & 2185' FEL
Permanent Datum GROUND LEVEL Elevation 1984
Log Measured From KELLY BUSHING 13' A.G.L.
Drilling Measured From KELLY BUSHING
SEC 34 TWP 21S RGE 16W
Elevation
K.B. 1997
D.F. 1995
G.L. 1984

Date	7/25/13		
Run Number	TWO		
Depth Driller	3920		
Depth Logger	3920		
Bottom Logged Interval	3902		
Top Log Interval	3000		
Casing Driller	8 5/8" @ 1009		
Casing Logger	1008		
Bit Size	7 7/8		
Type Fluid in Hole	CHEMICAL MUD	CHLORIDES 6200 PPM	
Density / Viscosity	9.3/52		
pH / Fluid Loss	9.5/11.2		
Source of Sample	FLOWLINE		
Rin @ Meas. Temp	.65 @ 94F		
Rmf @ Meas. Temp	.48 @ 94F		
Rmc @ Meas. Temp	.78 @ 94F		
Source of Rmf / Rmc	MEASURED		
Rin @ BHT	.53 @ 115F		
Time Circulation Stopped	2 HOURS		
Time Logger on Bottom			
Maximum Recorded Temperature	115F		
Equipment Number	680		
Location	HAYS, KS.		
Recorded By	JASON CAPPELLUCCI		
Witnessed By	JON CHRISTENSEN		

<<< Fold Here >>>

All interpretations are opinions based on inferences from electrical or other measurements and we cannot and do not guarantee the accuracy or correctness of any interpretation, and we shall not, except in the case of gross or willful negligence on our part, be liable or responsible for any loss, costs, damages, or expenses incurred or sustained by anyone resulting from any interpretation made by any of our officers, agents or employees. These interpretations are also subject to our general terms and conditions set out in our current Price Schedule.

Comments

THANK YOU FOR USING NABORS COMPLETION & PRODUCTION SVCS. (785) 628-6395

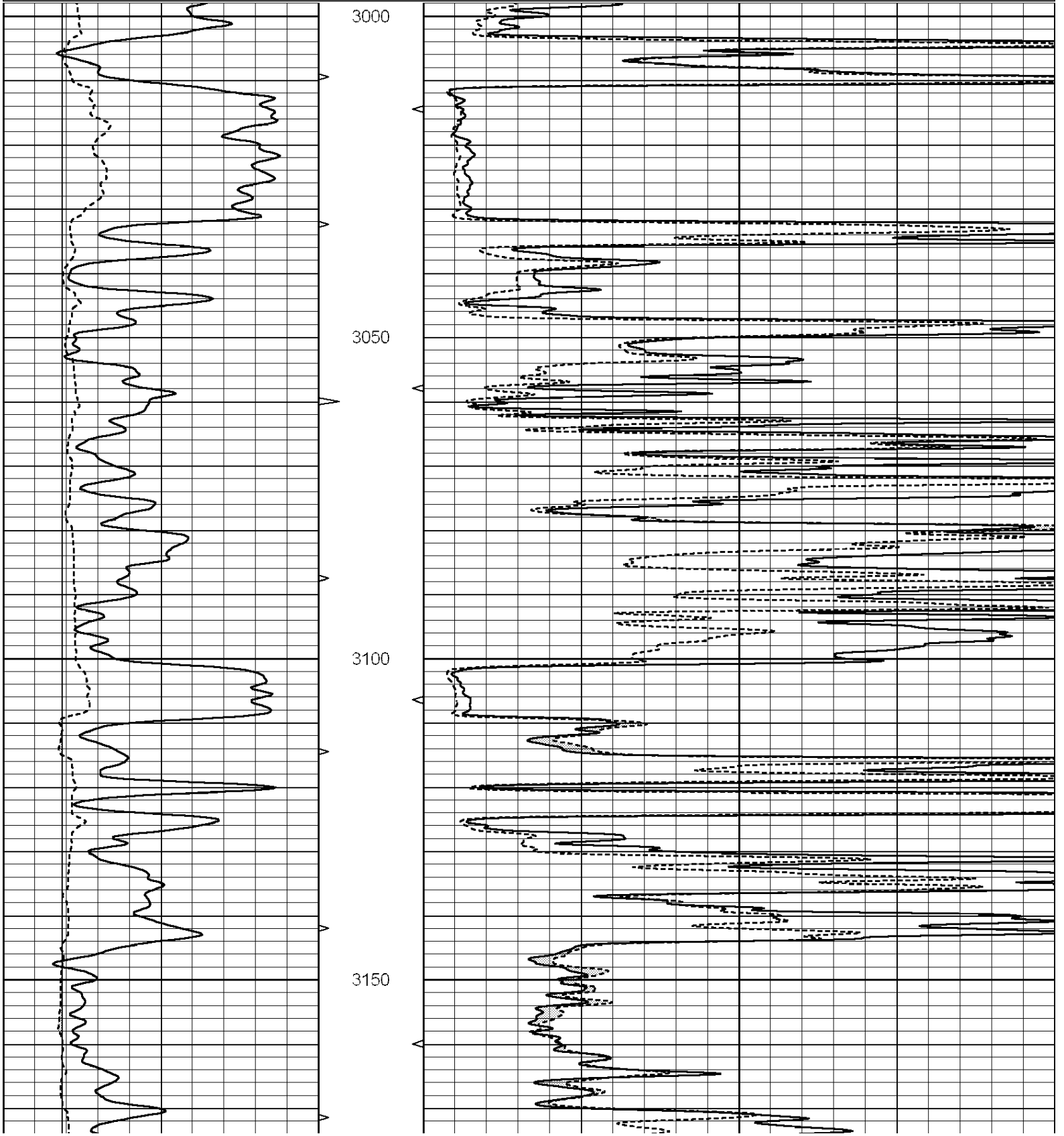
DIRECTIONS:
LARNED, KS. - 1 E. ON HWY 156 TO 100TH RD. - 2 S. TO M. RD. - 3/4 E. - N. INTO

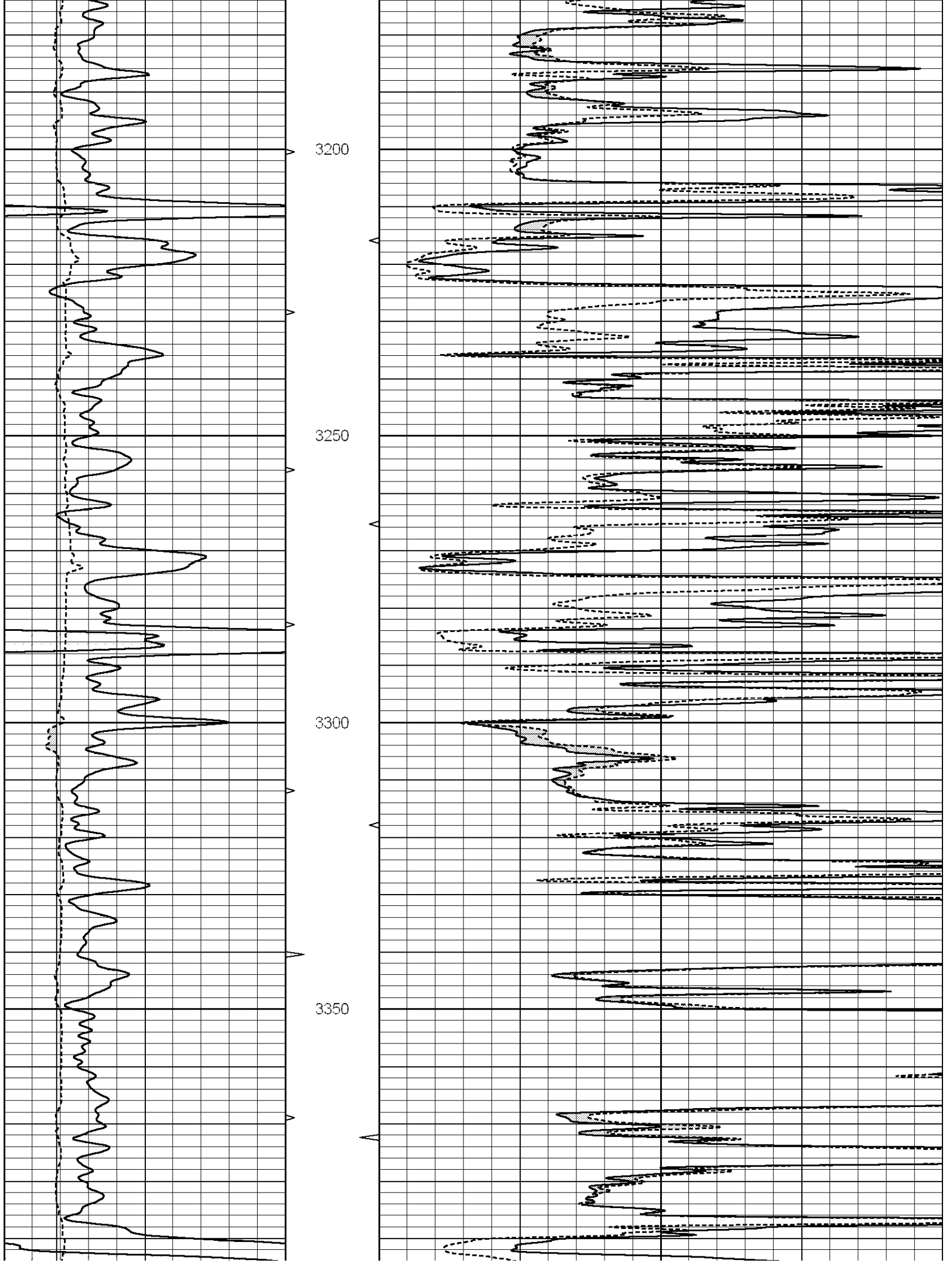


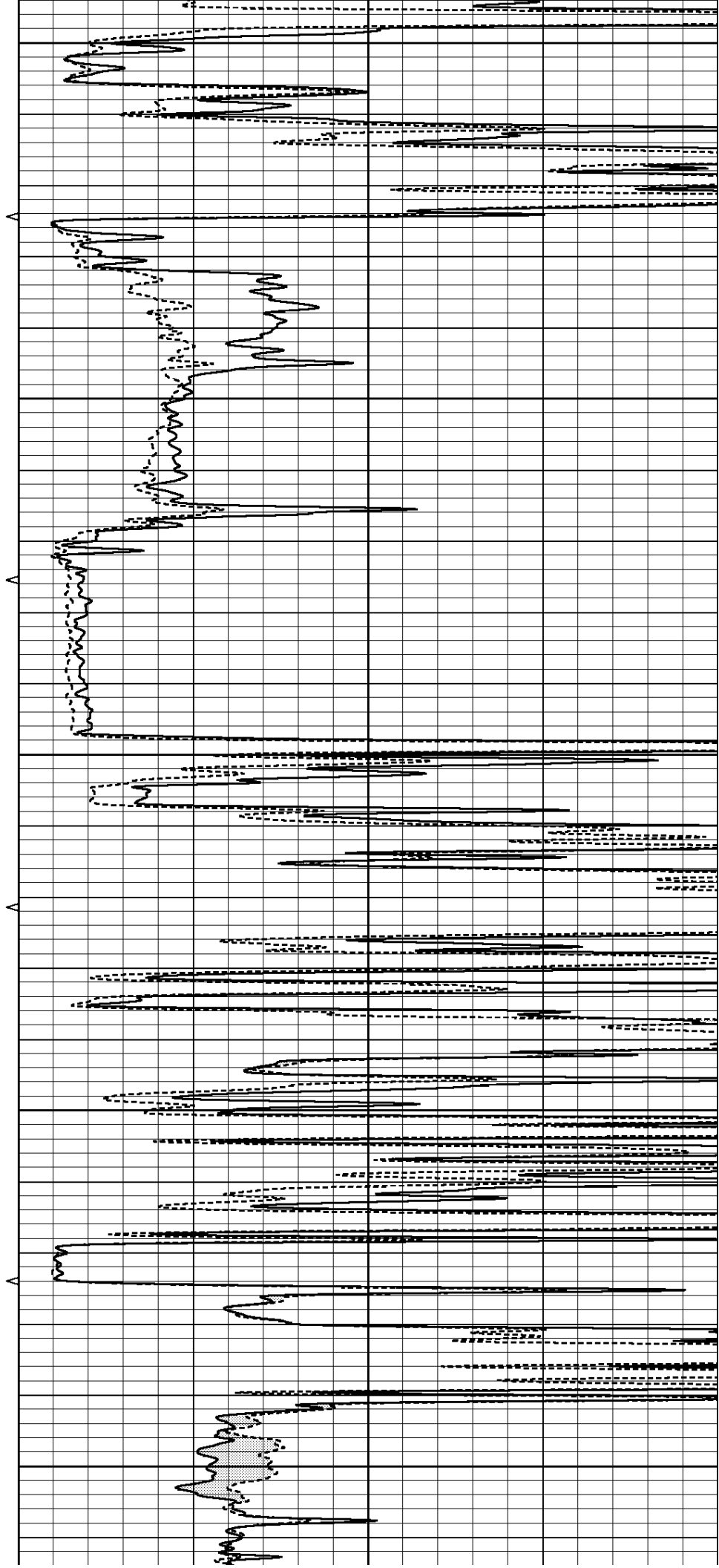
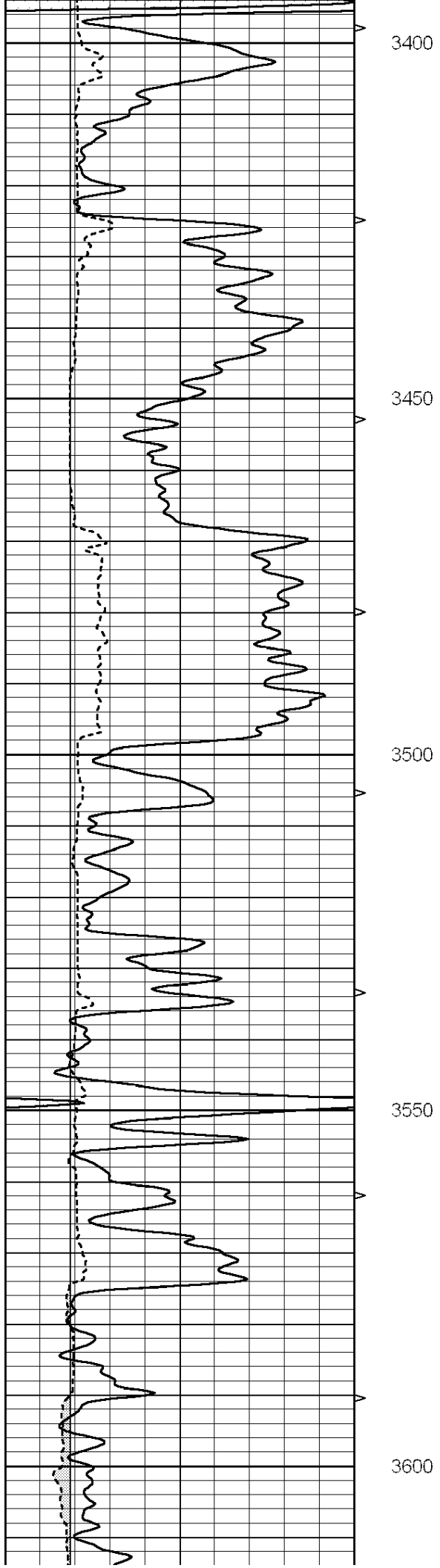
MAIN SECTION

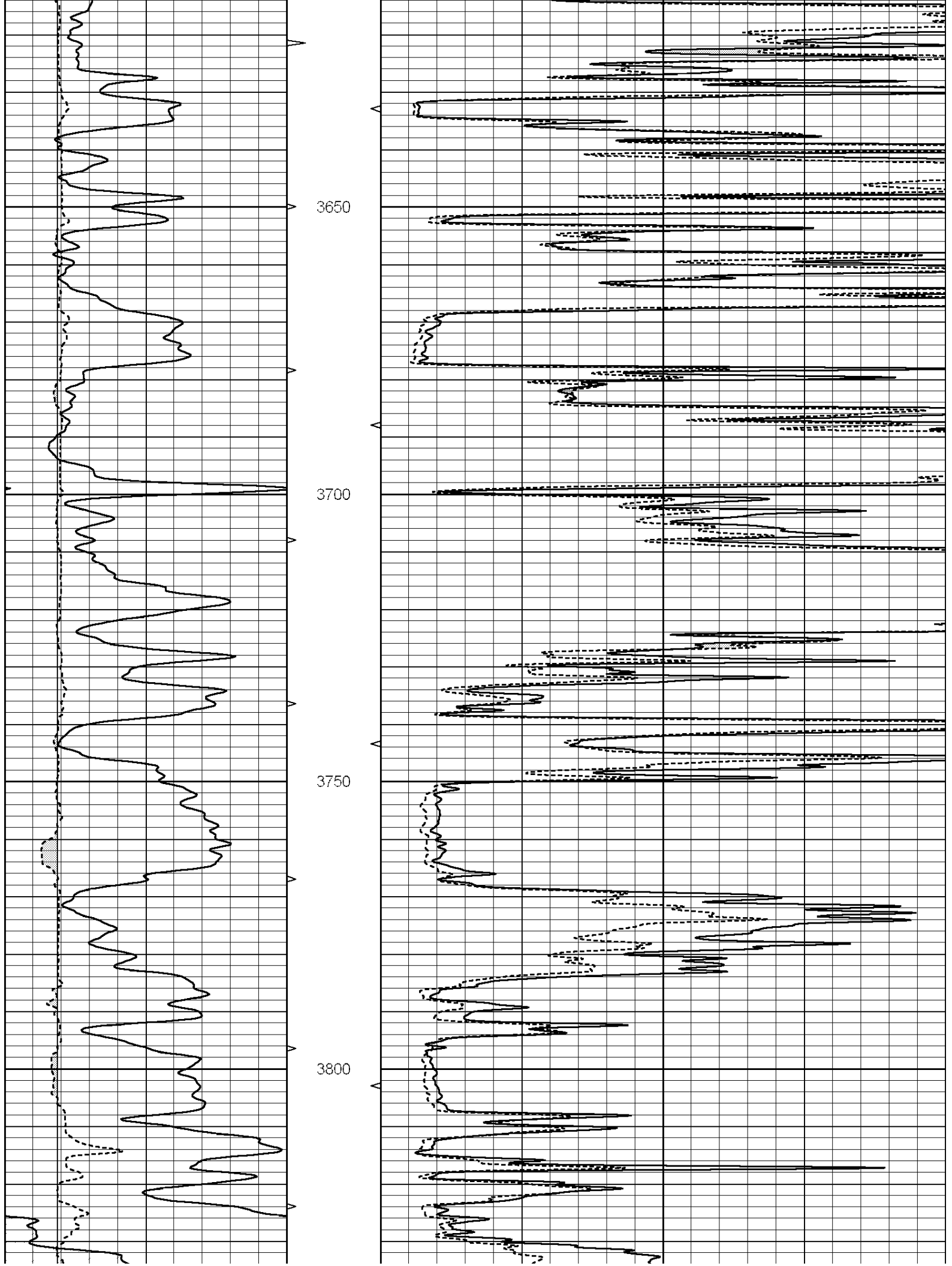
Database File: 011577pe.db
 Dataset Pathname: pass6.1
 Presentation Format: _micro
 Dataset Creation: Thu Jul 25 11:54:59 2013 by Calc Open-Cased 090629
 Charted by: Depth in Feet scaled 1:240

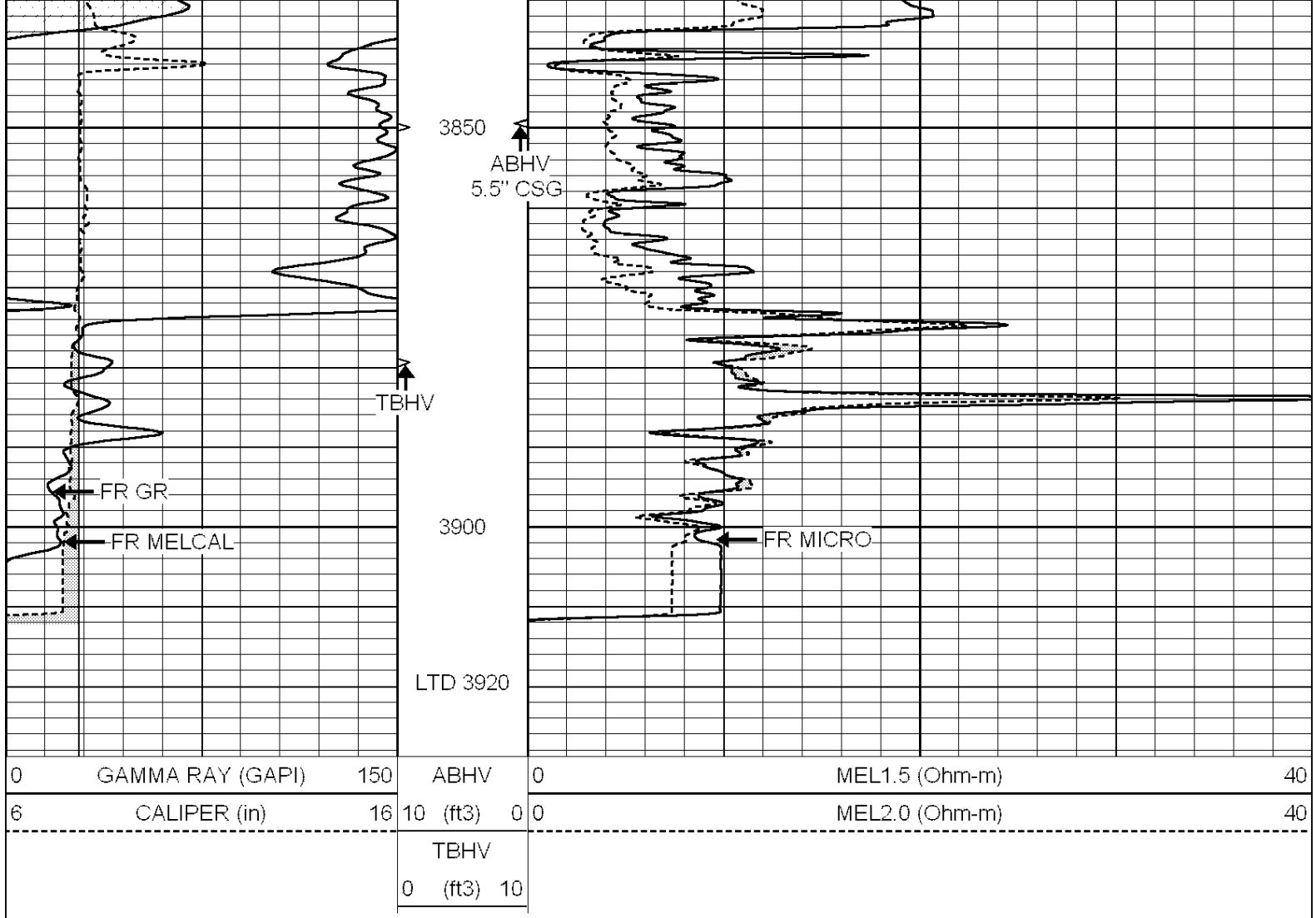
0	GAMMA RAY (GAPI)	150	ABHV	0	MEL1.5 (Ohm-m)	40
6	CALIPER (in)	16	10 (ft3)	0	MEL2.0 (Ohm-m)	40
			TBHV			
			0 (ft3)			







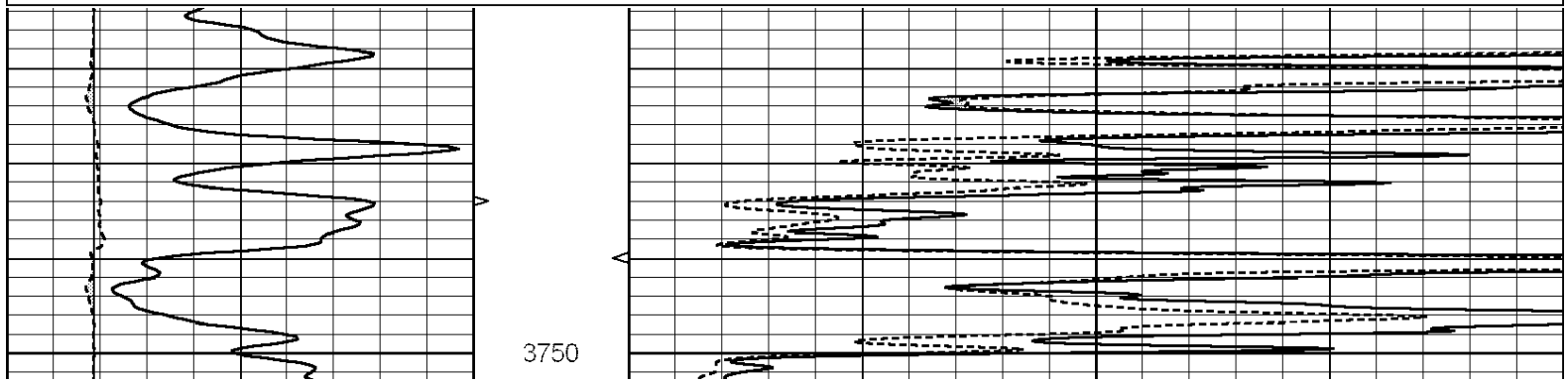


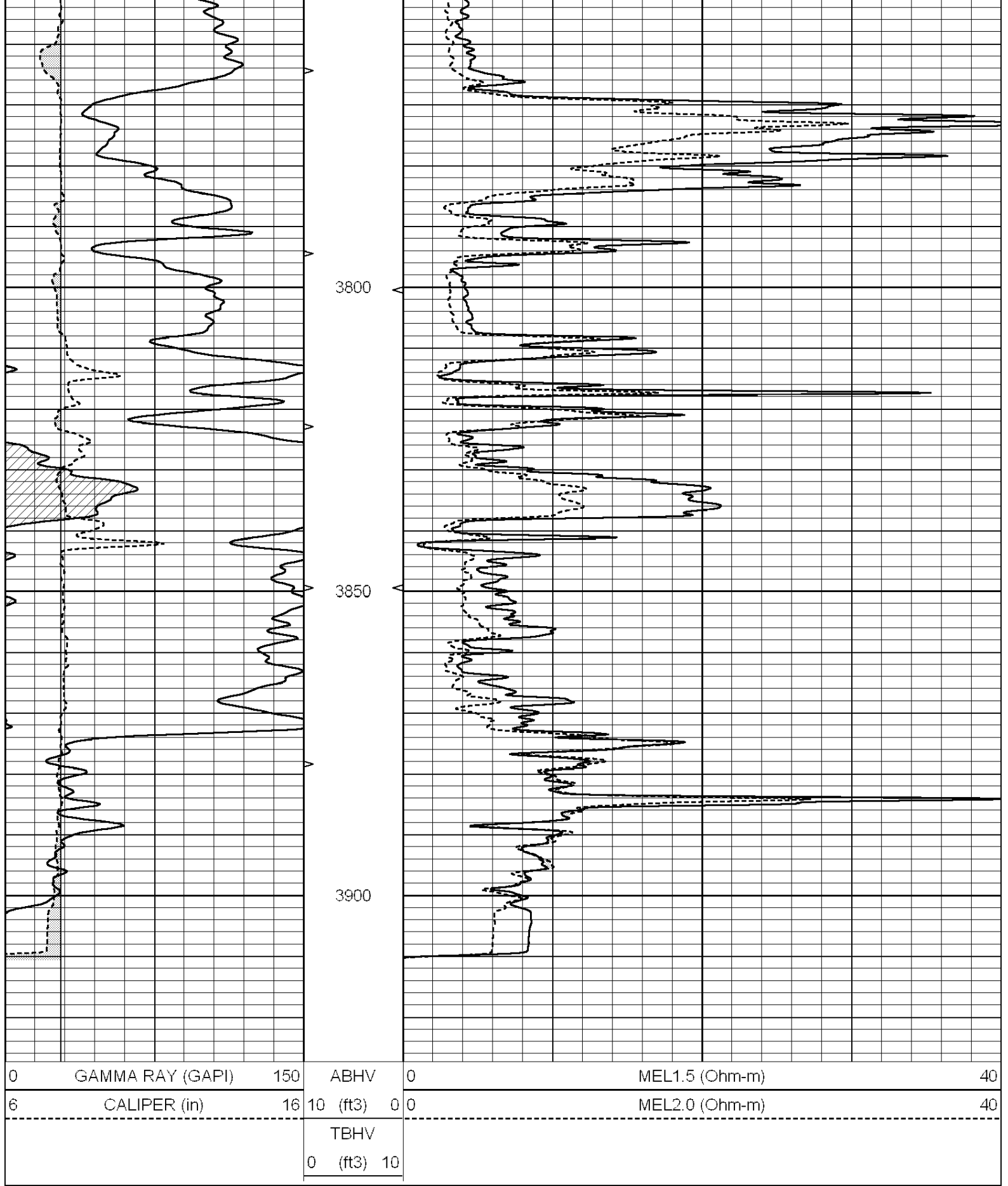


REPEAT SECTION

Database File: 011577pe.db
 Dataset Pathname: pass5.1
 Presentation Format: _micro
 Dataset Creation: Thu Jul 25 11:49:10 2013 by Calc Open-Cased 090629
 Charted by: Depth in Feet scaled 1:240

0	GAMMA RAY (GAPI)	150	ABHV	0	MEL1.5 (Ohm-m)	40
6	CALIPER (in)	16	10 (ft3)	0 0	MEL2.0 (Ohm-m)	40
			TBHV			
			0 (ft3)	10		





Calibration Report

Database File: 011577pe.db
 Dataset Pathname: pass5.1
 Dataset Creation: Thu Jul 25 11:49:10 2013 by Calc Open-Cased 090629

MICRO6 Calibration Report

Serial Number:	MICRO6
Tool Model:	PROBE
Performed:	Sun Jun 16 11:26:16 2013

Caliper Calibration:	Gain=5.542	Offset=-0.970
	Low Cal	High Cal
References	8.000	14.000
Readings	1.431	2.513

1.5" Calibration:	Gain=45.075	Offset=-0.700
	Low Cal	High Cal
References	0.000	20.000
Readings	0.004	1.196

2" Calibration:	Gain=49.041	Offset=-0.600
	Low Cal	High Cal
References	0.000	20.000
Readings	0.006	0.913

Gamma Ray Calibration Report

Serial Number:	#8
Tool Model:	OPEN
Performed:	Mon Jun 13 16:56:43 2011

Calibrator Value:	150.0	GAPI
Background Reading:	0.0	cps
Calibrator Reading:	175.0	cps
Sensitivity:	0.8371	GAPI/cps