



**COMPLETION
& PRODUCTION
SERVICES CO.**

**COMPENSATED
DENSITY / NEUTRON
LOG**

Company PFEIFER EXPLORATIONS, LLC.
Well ALBERT #35-1
Field TOULON
County ELLIS
State KANSAS

Company PFEIFER EXPLORATIONS, LLC.
Well ALBERT #35-1
Field TOULON
County ELLIS State KANSAS

Location: API # : 15-051-26611-0000
680' FSL & 330' FWL
SEC 35 TWP 13S RGE 17W

Permanent Datum GROUND LEVEL Elevation 1948
Log Measured From KELLY BUSHING 5' A.G.L.
Drilling Measured From KELLY BUSHING

Other Services
DIL/MEL
Elevation
K.B. 1953
D.F. 1951
G.L. 1948

Date	10/16/13
Run Number	ONE
Depth Driller	3532
Depth Logger	3534
Bottom Logged Interval	3510
Top Log Interval	2900
Casing Driller	8 5/8"@219'
Casing Logger	220
Bit Size	7 7/8"
Type Fluid in Hole	CHEMICAL MUD
Density / Viscosity	9.4/60
pH / Fluid Loss	10.0/8.0
Source of Sample	FLOWLINE
Rim @ Meas. Temp	.750@60F
Rmf @ Meas. Temp	.563@60F
Rmc @ Meas. Temp	.900@60F
Source of Rmf / Rmc	MEASUREMENT
Rim @ BHT	.402@112F
Time Circulation Stopped	2 HOURS
Time Logger on Bottom	2:45 A.M.
Maximum Recorded Temperature	112F
Equipment Number	4854
Location	HAYS, KANSAS
Recorded By	JEFF LUEBBERS
Witnessed By	ROGER MOSES
	JAY PFEIFER

<<< Fold Here >>>

All interpretations are opinions based on inferences from electrical or other measurements and we cannot and do not guarantee the accuracy or correctness of any interpretation, and we shall not, except in the case of gross or willful negligence on our part, be liable or responsible for any loss, costs, damages, or expenses incurred or sustained by anyone resulting from any interpretation made by any of our officers, agents or employees. These interpretations are also subject to our general terms and conditions set out in our current Price Schedule.

Comments

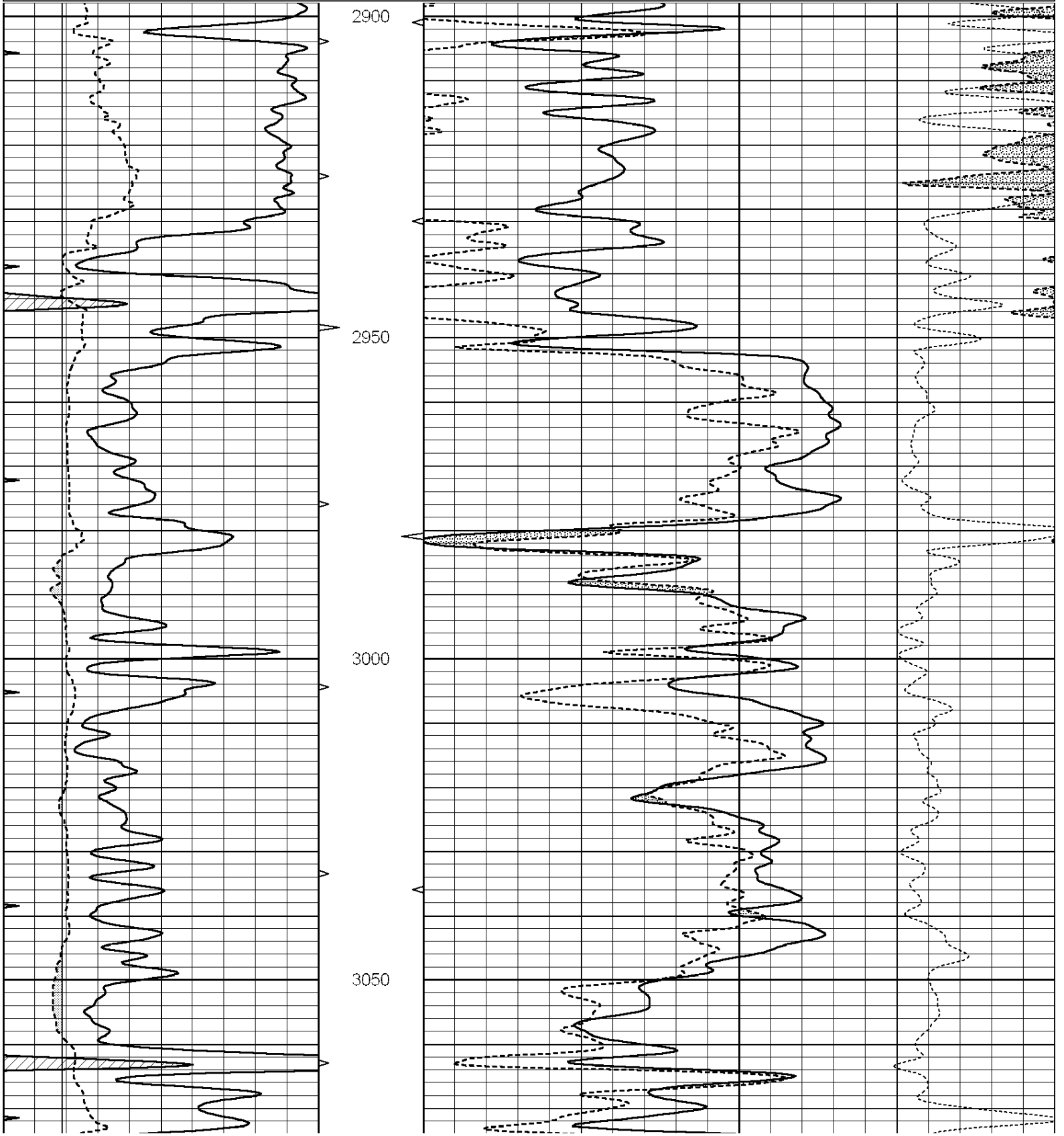
THANK YOU FOR USING "NABORS" HAYS, KANSAS (785) 628-6395
DIRECTIONS
VICTORIA, KS. & I-70 EXIT, 1/2S. ON CATHEDRAL TO "VICTORIA RD.", 1 3/4W., N, INTO @TREE ROW

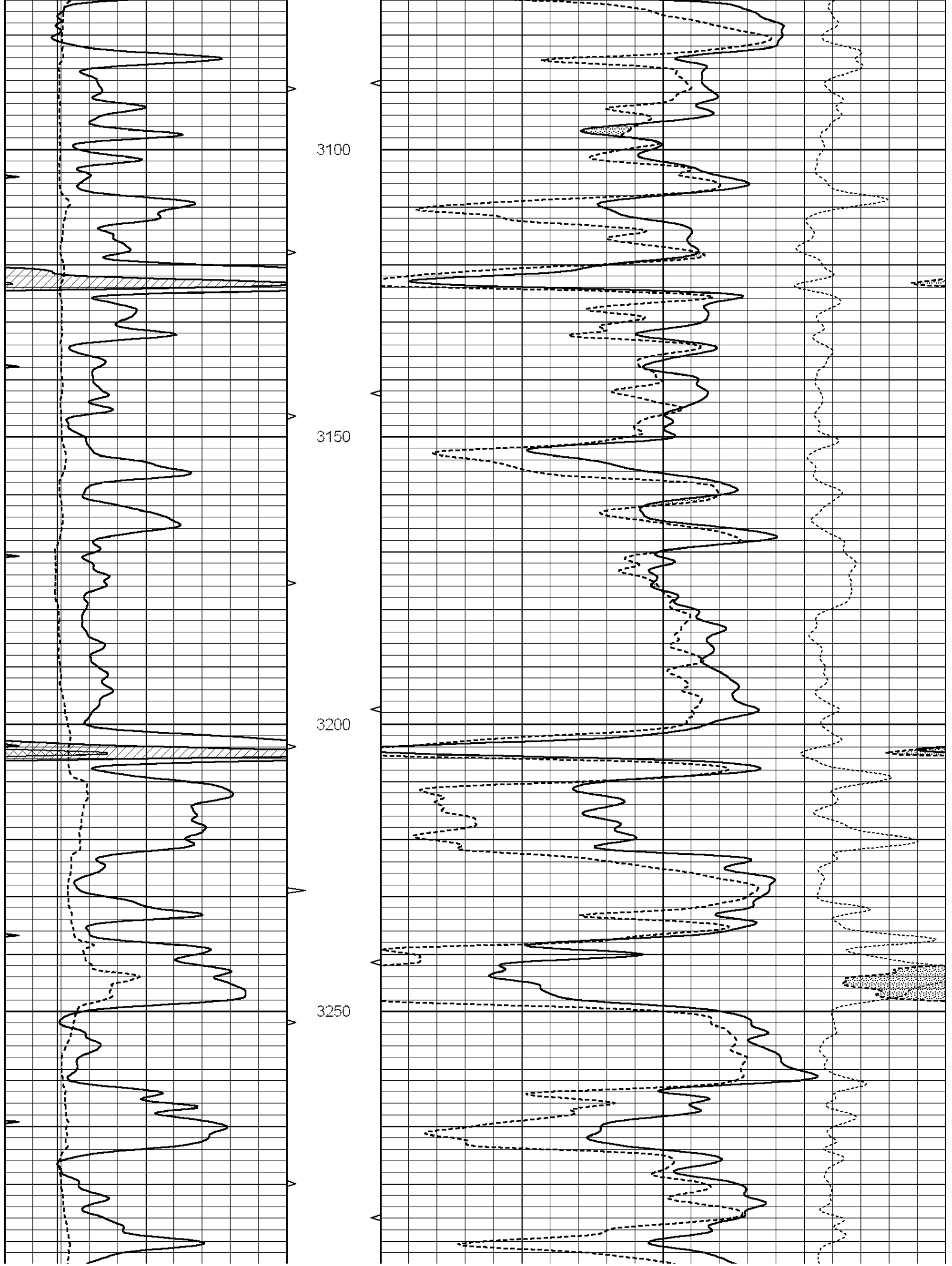


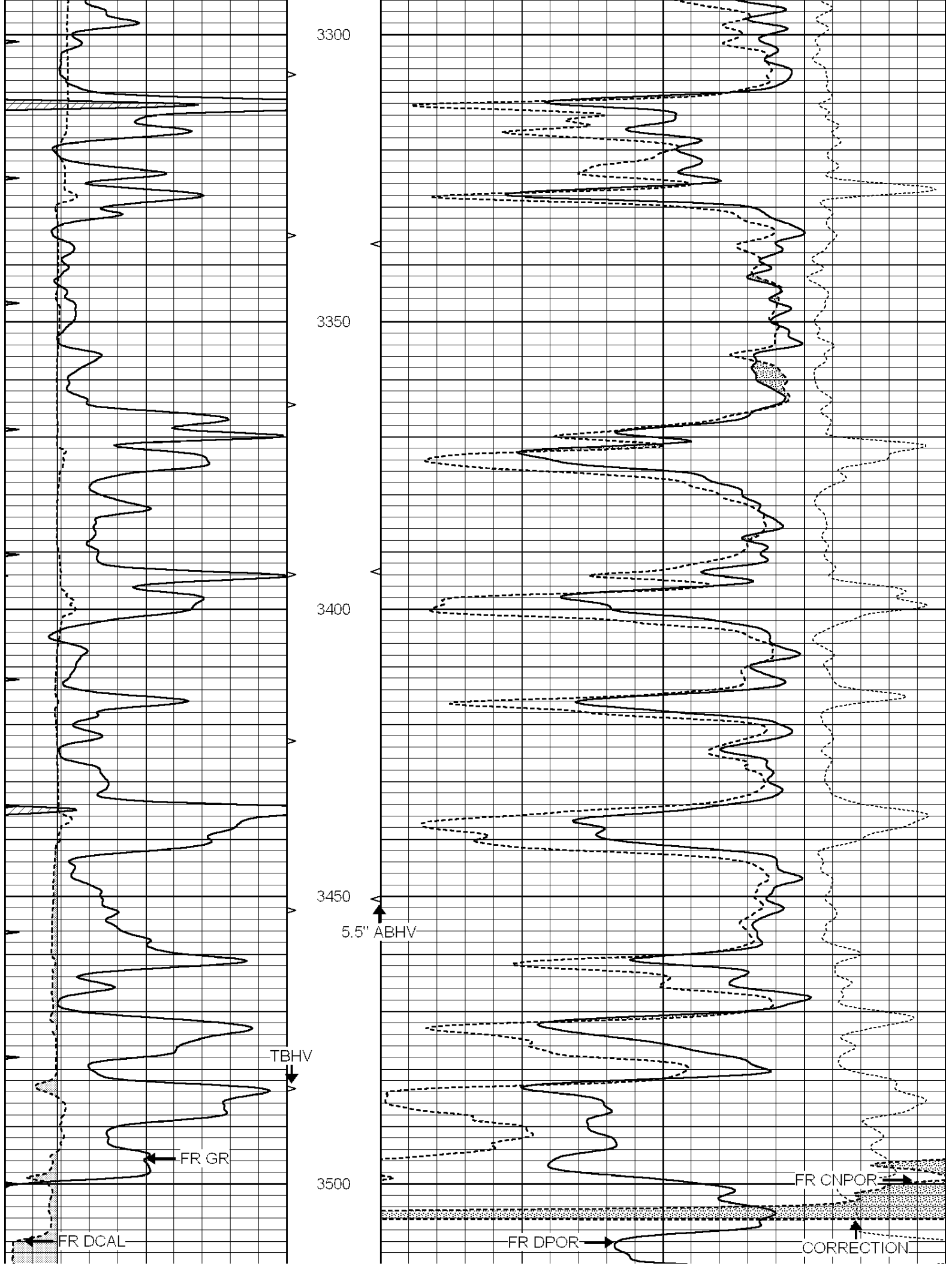
MAIN SECTION

Database File: 011688ddn.db
 Dataset Pathname: pass3.6
 Presentation Format: den_neu
 Dataset Creation: Wed Oct 16 03:47:19 2013 by Calc SOC 120430
 Charted by: Depth in Feet scaled 1:240

0	GAMMA RAY (GAPI)	150	ABHV	30	COMPENSATED DENSITY (pu)	-10
6	CALIPER (in)	16	10 (ft3)	0 30	COMPENSATED NEUTRON (pu)	-10
0	MINMK	20	TBHV		-0.25 CORRECTION (g/cc)	0.25
			0 (ft3)	10		







3300

3350

3400

3450

3500

5.5" ABHV

TBHV

FR GR

FR DCAL

FR DPOR

FR CNPOR

CORRECTION

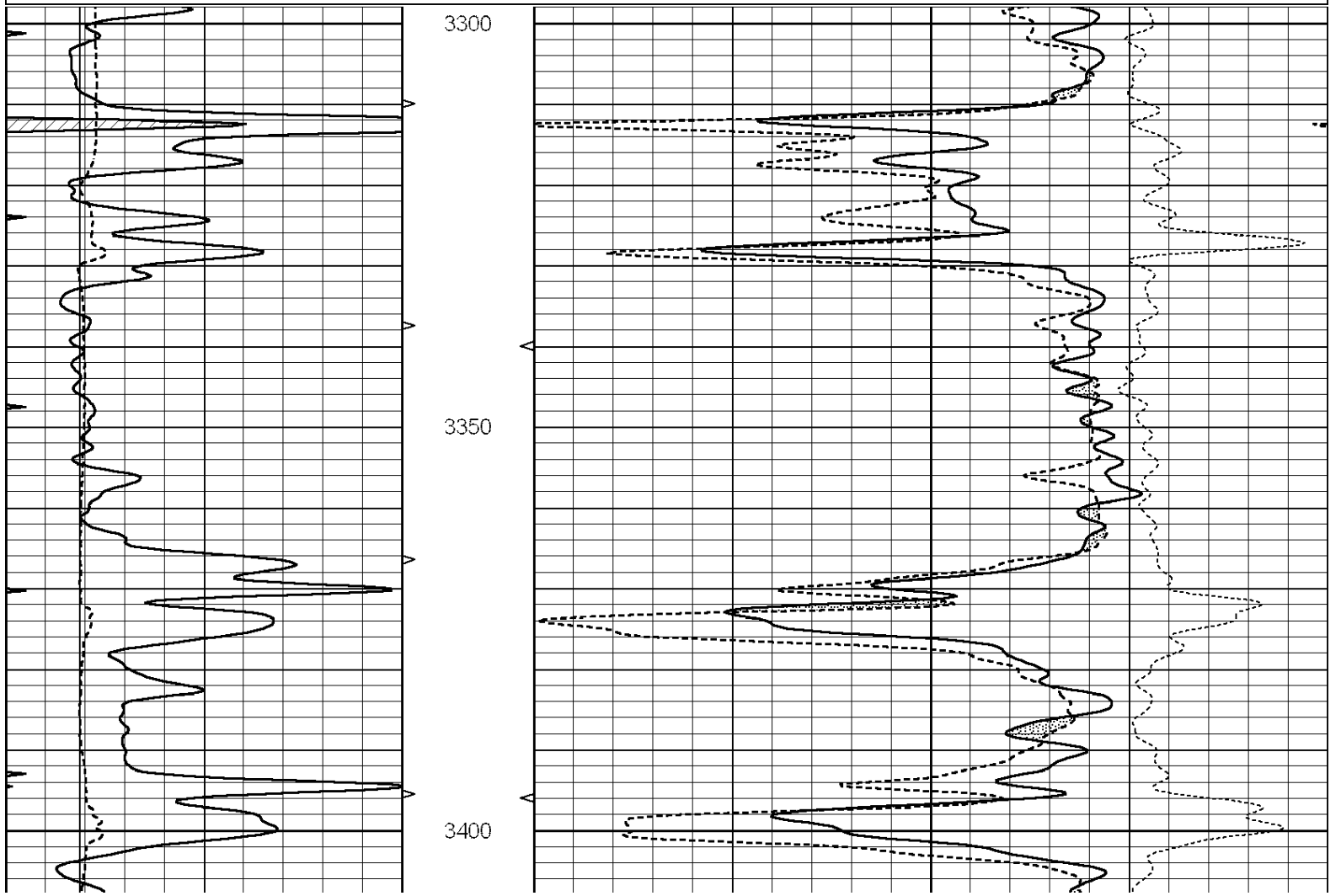
← MINMK		LTD 3534		2.71 LIMESTONE MATRIX		
0	GAMMA RAY (GAPI)	150	ABHV	30	COMPENSATED DENSITY (pu)	-10
6	CALIPER (in)	16	10 (ft3)	0 30	COMPENSATED NEUTRON (pu)	-10
0	MINMK	20	TBHV		-0.25 CORRECTION (g/cc)	0.25
			0 (ft3)	10		

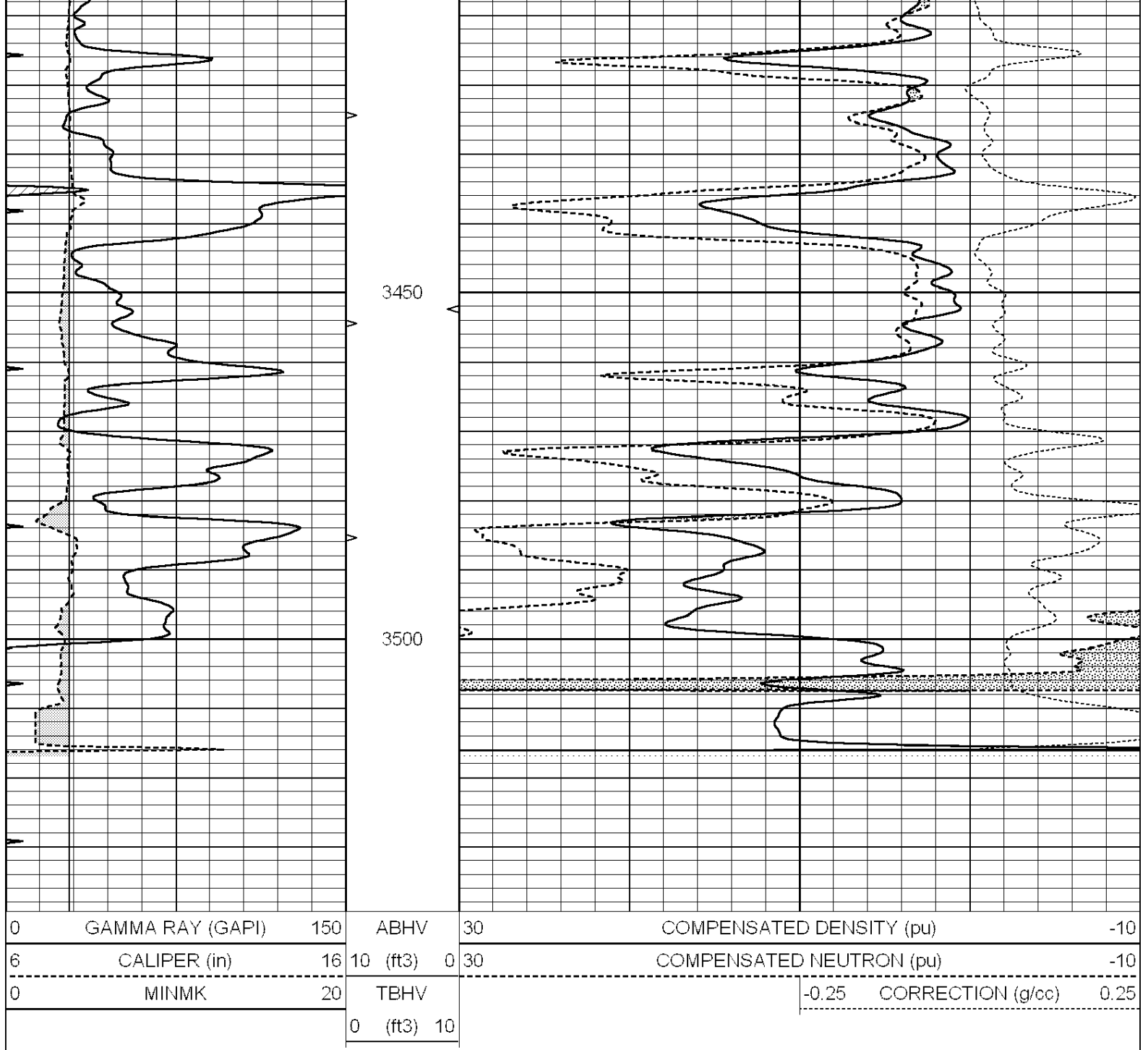


REPEAT SECTION

Database File: 011688ddn.db
 Dataset Pathname: pass2.4
 Presentation Format: den_neu
 Dataset Creation: Wed Oct 16 03:23:16 2013 by Calc SOC 120430
 Charted by: Depth in Feet scaled 1:240

0	GAMMA RAY (GAPI)	150	ABHV	30	COMPENSATED DENSITY (pu)	-10
6	CALIPER (in)	16	10 (ft3)	0 30	COMPENSATED NEUTRON (pu)	-10
0	MINMK	20	TBHV		-0.25 CORRECTION (g/cc)	0.25
			0 (ft3)	10		





Calibration Report

Database File: 011688ddn.db
 Dataset Pathname: pass3.6
 Dataset Creation: Wed Oct 16 03:47:19 2013 by Calc SOC 120430

Dual Induction Calibration Report

Serial-Model: PROBE9-DILG
 Surface Cal Performed: Wed Oct 16 00:28:49 2013
 Downhole Cal Performed: Mon Jul 28 12:02:56 2008
 After Survey Verification Performed: Mon Jul 28 12:02:56 2008

Surface Calibration

Loop:	Readings		V	References		mmho/m	Results	
	Air	Loop		Air	Loop		m	b
Deep	-0.014	0.629	V	0.000	400.000	mmho/m	650.000	-6.000
Medium	0.039	0.728	V	0.000	464.000	mmho/m	640.000	-9.500

Internal:	Zero	Cal		Zero	Cal		m	b
Deep	0.011	0.610	V	0.000	400.000	mmho/m	667.135	-7.256
Medium	0.005	0.712	V	0.000	464.000	mmho/m	655.677	-3.102

Downhole Calibration								
	Readings			References			Results	
	Zero	Cal		Zero	Cal		m'	b'
Deep	0.000	0.000	mmho/m	14.508	388.384	mmho/m	1.000	0.000
Medium	0.000	0.000	mmho/m	166.367	504.400	mmho/m	1.000	0.000
LL3		7.500	V		1400.000	Ohm-m		
		0.000	V		20.000	Ohm-m		
		-7.200	V		4000.000	mmho-m		

After Survey Verification								
	Readings			Targets			Results	
	Zero	Cal		Zero	Cal		m'	b'
Deep	0.000	0.000	mmho/m	0.000	0.000	mmho/m	0.000	0.000
Medium	0.000	0.000	mmho/m	0.000	0.000	mmho/m	0.000	0.000
LL3		1.000	Ohm-m		1.000	Ohm-m		
		0.000	Ohm-m		0.000	Ohm-m		
		1.000	mmho-m		1.000	mmho-m		

Litho Density Calibration Report
Serial: 004N Model: PRB

Master Calibration		Performed Mon Jun 03 09:36:56 2013				
	Background	Magnesium	Aluminum	Sandstone		
Window 1	1417.6	10391.4	3464.6	11537.5		cps
Window 2	1295.0	8959.7	3050.1	9816.4		cps
Window 3	1105.1	5464.2	2051.0	5838.8		cps
Window 4	315.0	317.7	312.9	319.8		cps
Long Space	0.0	7664.6	1755.0	8521.3		cps
Short Space	1.8	1582.4	1040.8	1699.4		cps
Rho		1.7100	2.5900	1.3800		g/cc
Pe		0.0000	2.5700	1.5500		
Rib Angle	: 44.1	Rib Slope	: 0.970	Density/Spine Ratio		: 0.574
Spine Angle	: 74.1	Spine Slope	: 3.519	Spine Intercept		: -17.0

Before Survey Verification		Performed Wed Dec 31 18:00:00 1969				
	Background	Magnesium	Aluminum	Sandstone		
Window 1	0.0	0.0	0.0	0.0		cps
Window 2	0.0	0.0	0.0	0.0		cps
Window 3	0.0	0.0	0.0	0.0		cps
Window 4	0.0	0.0	0.0	0.0		cps
Long Space	0.0	0.0	0.0	0.0		cps
Short Space	0.0	0.0	0.0	0.0		cps
Measured Rho		0.0000	0.0000	0.0000		g/cc
Measured Correction		0.0000	0.0000	0.0000		g/cc
Measured Pe			0.0000	0.0000		

After Survey Verification		Performed Wed Dec 31 18:00:00 1969				
	Background	Magnesium	Aluminum	Sandstone		
Window 1	0.0	0.0	0.0	0.0		cps
Window 2	0.0	0.0	0.0	0.0		cps
Window 3	0.0	0.0	0.0	0.0		cps

Window 4	0.0	0.0	0.0	0.0	cps
Long Space	0.0	0.0	0.0	0.0	cps
Short Space	0.0	0.0	0.0	0.0	cps
Measured Rho		0.0000	0.0000	0.0000	g/cc
Measured Correction		0.0000	0.0000	0.0000	g/cc
Measured Pe			0.0000	0.0000	

Compensated Neutron Calibration Report

Serial Number: 070808
Tool Model: Probe

PRE-SURVEY VERIFICATION

Detector	Readings	Measured	Target
Short Space	cps		
Long Space	cps	pu	pu

POST-SURVEY VERIFICATION

Detector	Readings	Measured	Target
Short Space	cps		
Long Space	cps	pu	pu

Gamma Ray Calibration Report

Serial Number: 070559
Tool Model: OPEN_GR
Performed: Wed Oct 16 03:19:01 2013

Calibrator Value: 1.0 GAPI

Background Reading: 0.0 cps
Calibrator Reading: 1.0 cps

Sensitivity: 0.3000 GAPI/cps