



**COMPLETION  
& PRODUCTION  
SERVICES CO.**

**MICRO  
LOG**

Company PFEIFER EXPLORATIONS, LLC.  
Well ALBERT #35-1  
Field TOULON  
County ELLIS  
State KANSAS

Company PFEIFER EXPLORATIONS, LLC.  
Well ALBERT #35-1  
Field TOULON  
County ELLIS  
State KANSAS

Location: API # : 15-051-26611-0000  
680' FSL & 330' FWL  
SEC 35 TWP 13S RGE 17W  
Permanent Datum GROUND LEVEL Elevation 1948  
Log Measured From KELLY BUSHING 5' A.G.L.  
Drilling Measured From KELLY BUSHING  
Other Services  
CDL/CNL  
DIL  
Elevation  
K.B. 1953  
D.F. 1951  
G.L. 1948

Date	10/16/13
Run Number	TWO
Depth Driller	3532
Depth Logger	3534
Bottom Logged Interval	3532
Top Log Interval	2900
Casing Driller	8 5/8"@219'
Casing Logger	220
Bit Size	7 7/8"
Type Fluid in Hole	CHEMICAL MUD
Density / Viscosity	9.4/60
pH / Fluid Loss	10.0/8.0
Source of Sample	FLOWLINE
Rim @ Meas. Temp	.750@60F
Rmf @ Meas. Temp	.563@60F
Rmc @ Meas. Temp	.900@60F
Source of Rmf / Rmc	MEASUREMENT
Rim @ BHT	.402@112F
Time Circulation Stopped	3.5 HOURS
Time Logger on Bottom	2:45 A.M.
Maximum Recorded Temperature	112F
Equipment Number	4854
Location	HAYS, KANSAS
Recorded By	JEFF LUEBBERS
Witnessed By	ROGER MOSES
	JAY PFEIFER

<<< Fold Here >>>

All interpretations are opinions based on inferences from electrical or other measurements and we cannot and do not guarantee the accuracy or correctness of any interpretation, and we shall not, except in the case of gross or willful negligence on our part, be liable or responsible for any loss, costs, damages, or expenses incurred or sustained by anyone resulting from any interpretation made by any of our officers, agents or employees. These interpretations are also subject to our general terms and conditions set out in our current Price Schedule.

**Comments**

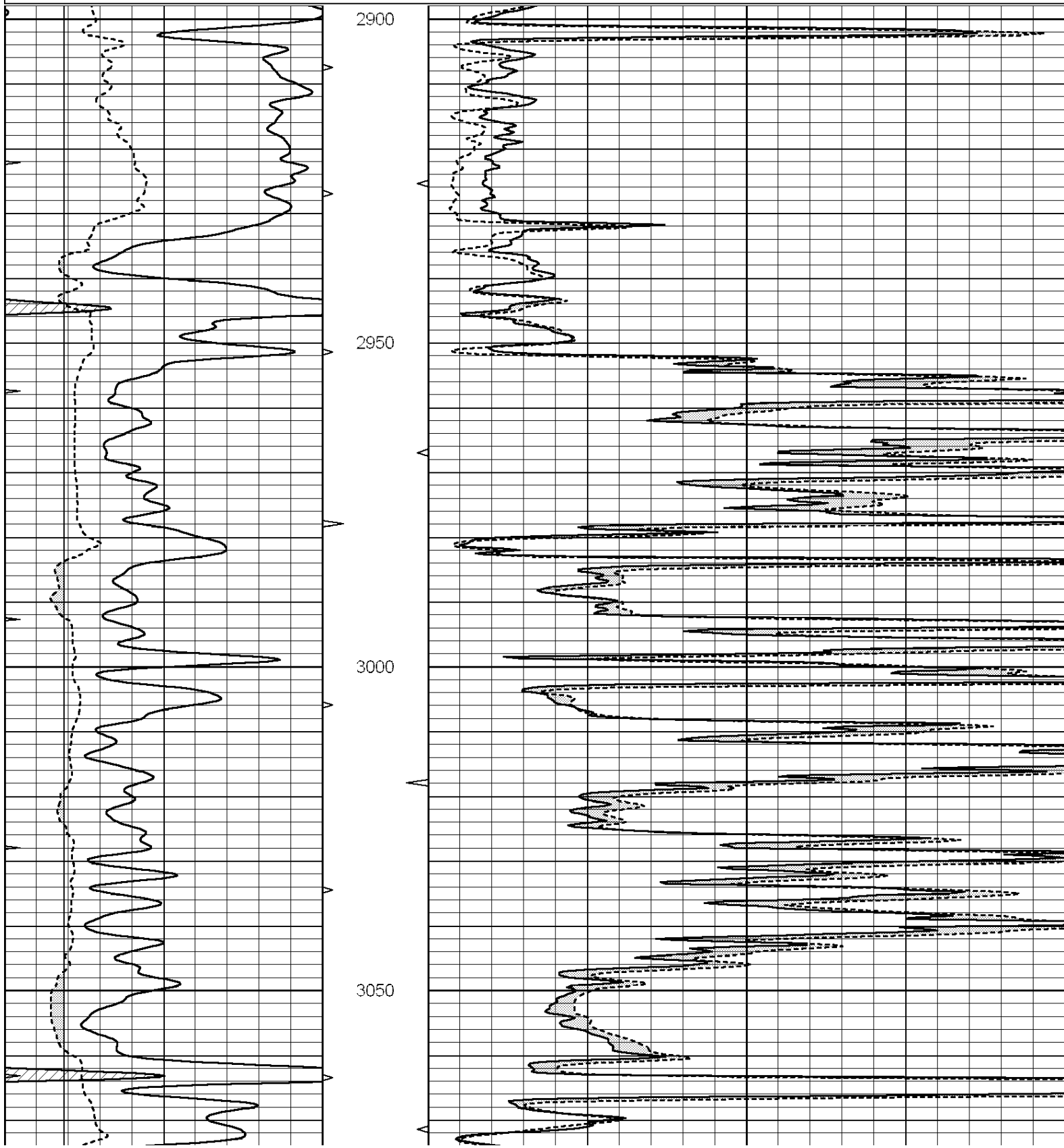
THANK YOU FOR USING "NABORS" HAYS, KANSAS (785) 628-6395  
DIRECTIONS  
VICTORIA, KS. & I-70 EXIT, 1/2S. ON CATHEDRAL TO "VICTORIA RD.", 1 3/4W., N, INTO @TREE ROW

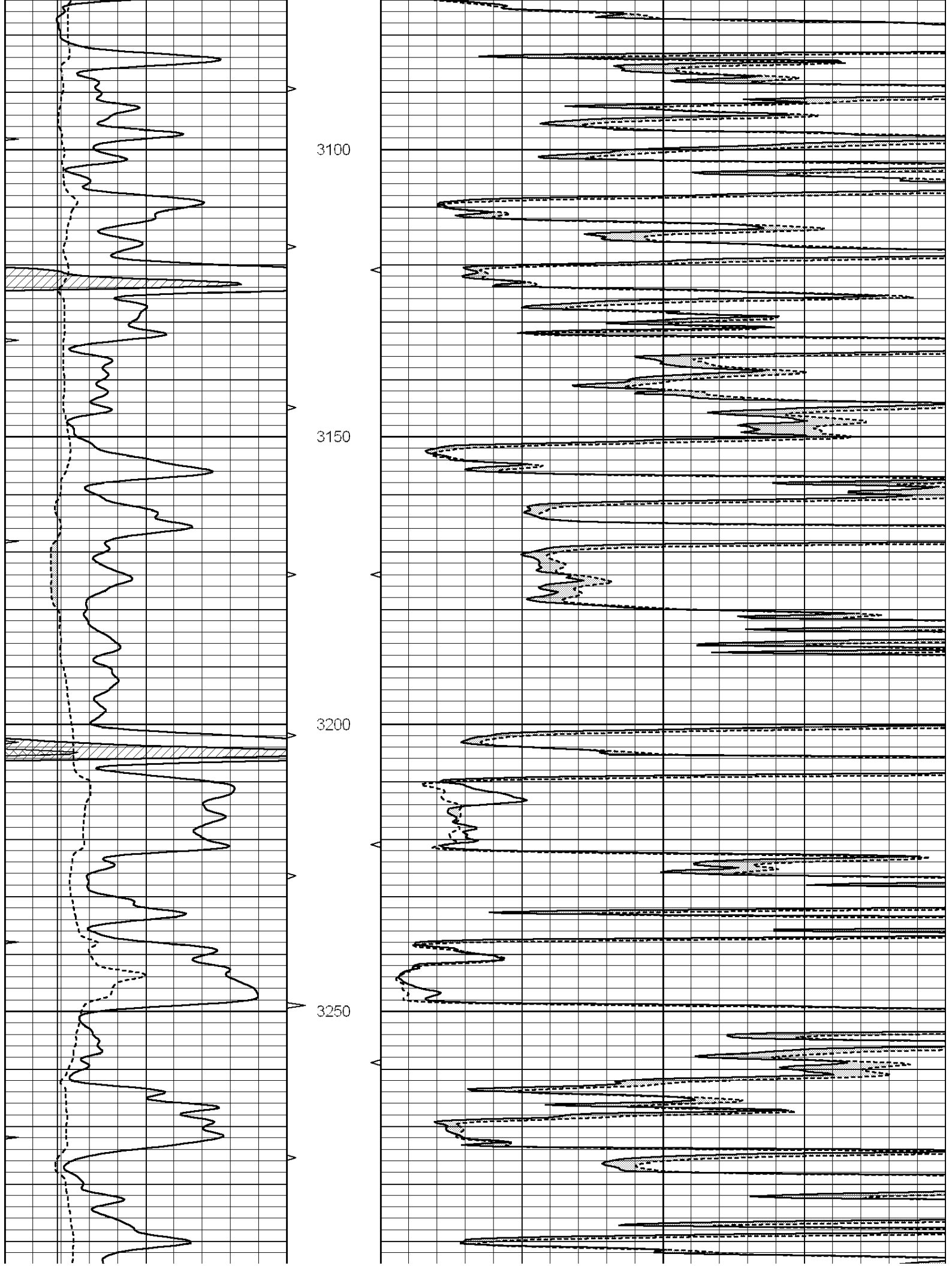


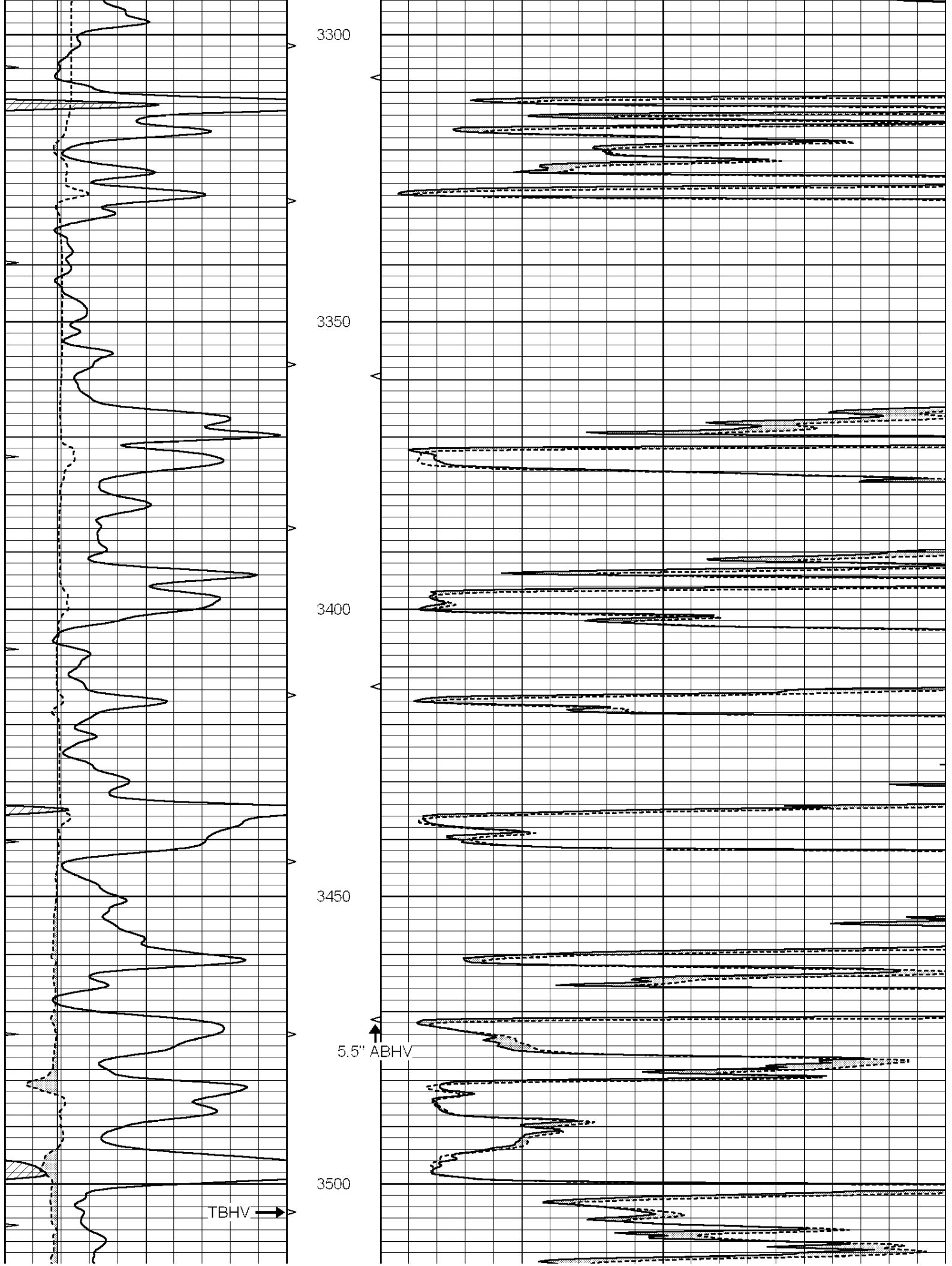
**MAIN SECTION**

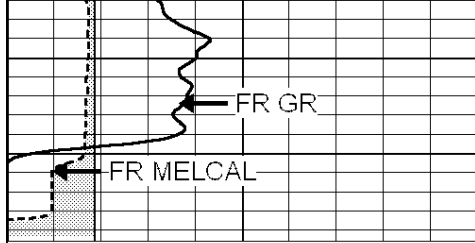
Database File: 011688ddn.db  
 Dataset Pathname: pass6.1  
 Presentation Format: micro  
 Dataset Creation: Wed Oct 16 05:07:38 2013 by Calc SOC 120430  
 Charted by: Depth in Feet scaled 1:240

0	GAMMA RAY (GAPI)	150	ABHV	0	MEL1.5 (Ohm-m)	40
6	CALIPER (in)	16	10 (ft3)	0	MEL2.0 (Ohm-m)	40
0	MINMK	20	TBHV			
			0 (ft3)	10		

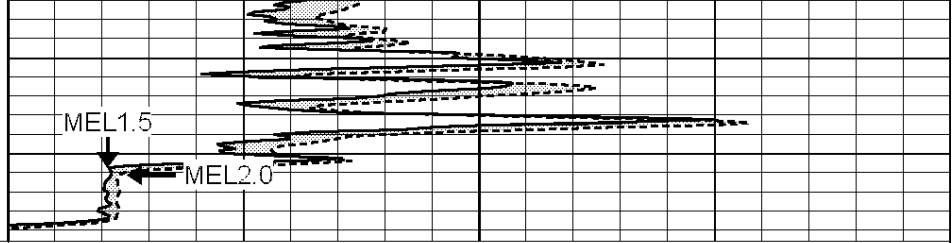




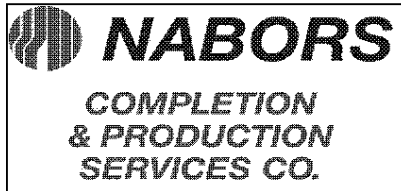




LTD 3534



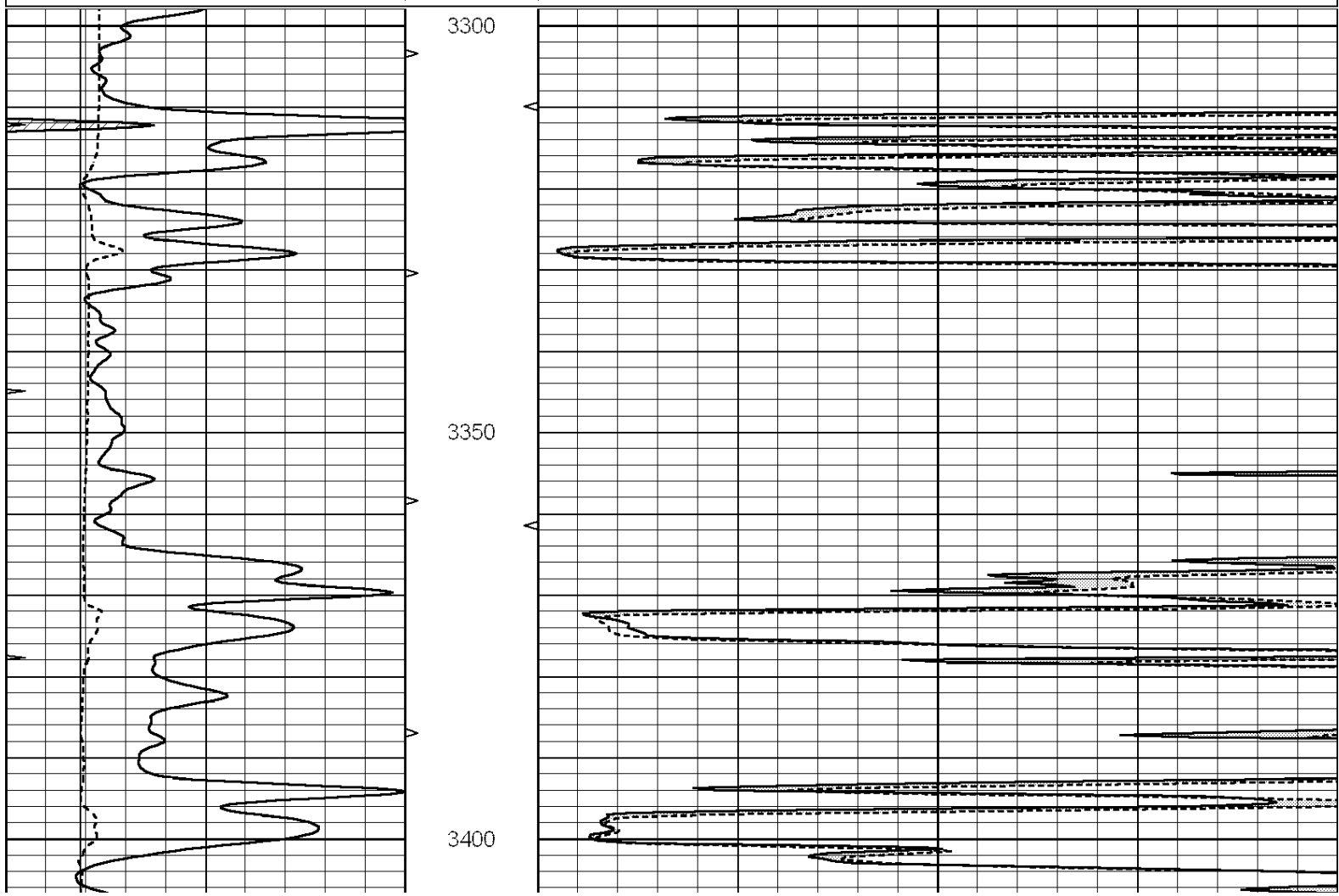
0	GAMMA RAY (GAPI)	150	ABHV	0	MEL1.5 (Ohm-m)	40
6	CALIPER (in)	16	10 (ft3)	0	MEL2.0 (Ohm-m)	40
0	MINMK	20	TBHV			
			0 (ft3)	10		

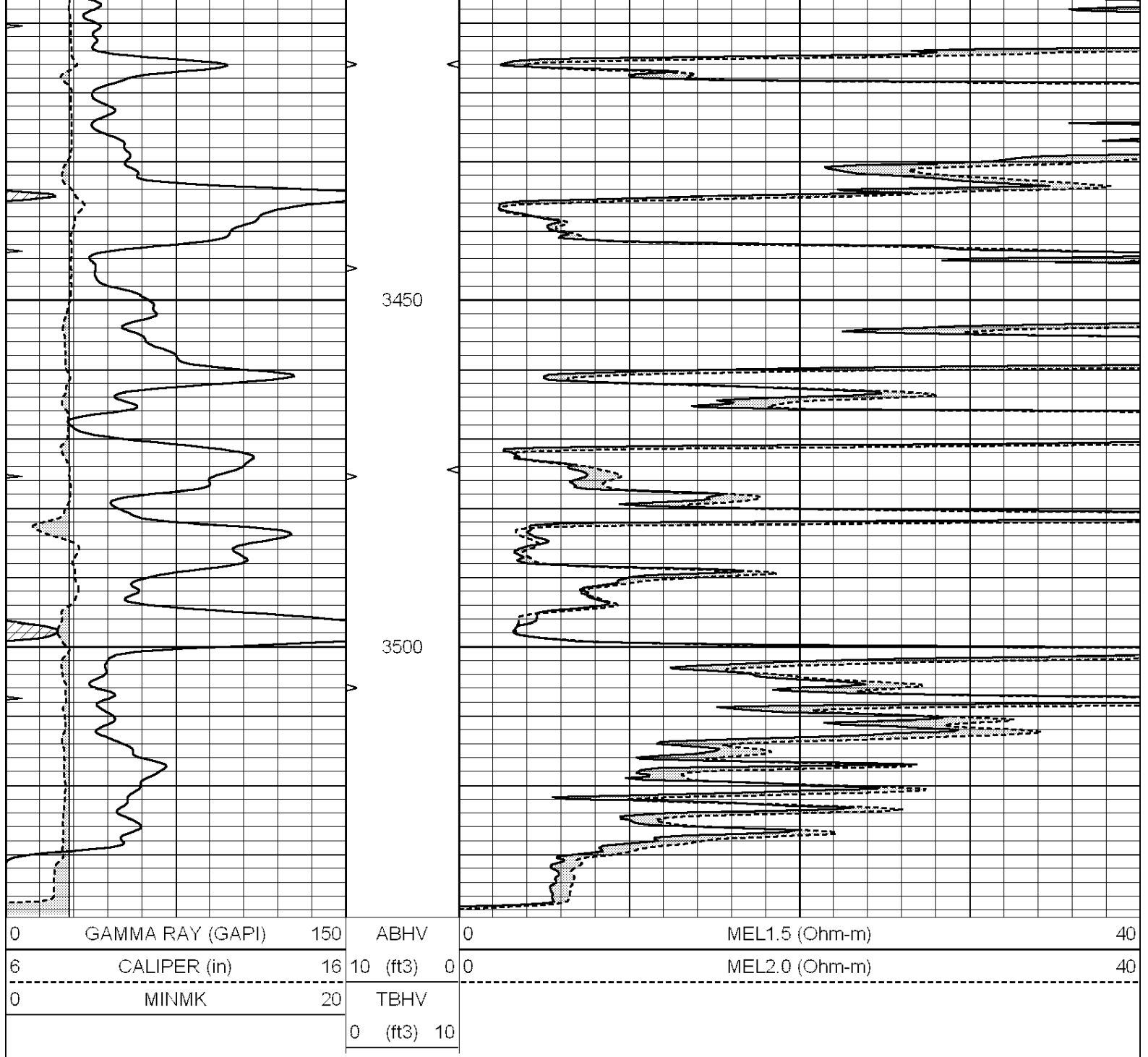


# REPEAT SECTION

Database File: 011688ddn.db  
 Dataset Pathname: pass5.5  
 Presentation Format: micro  
 Dataset Creation: Wed Oct 16 04:54:36 2013 by Calc SOC 120430  
 Charted by: Depth in Feet scaled 1:240

0	GAMMA RAY (GAPI)	150	ABHV	0	MEL1.5 (Ohm-m)	40
6	CALIPER (in)	16	10 (ft3)	0	MEL2.0 (Ohm-m)	40
0	MINMK	20	TBHV			
			0 (ft3)	10		





### Calibration Report

Database File: 011688ddn.db  
 Dataset Pathname: pass6.1  
 Dataset Creation: Wed Oct 16 05:07:38 2013 by Calc SOC 120430

### MICRO Calibration Report

Serial Number: 2  
 Tool Model: PROBE  
 Performed: Wed Oct 16 04:43:40 2013

Caliper Calibration: Gain=6.446      Offset=-3.761

References	Low Cal	High Cal
Readings	7.400	16.000
	1.731	3.065

1.5" Calibration: Gain=35.000      Offset=-2.000

References	Low Cal	High Cal
Readings	0.000	20.000
	0.015	0.458
2" Calibration:	Gain=76.000	Offset=-1.800
	Low Cal	High Cal
References	0.000	20.000
Readings	0.003	0.384
Gamma Ray Calibration Report		
Serial Number:	GR3	
Tool Model:	OPEN	
Performed:	Wed Oct 16 04:43:47 2013	
Calibrator Value:	200.0	GAPI
Background Reading:	3.0	cps
Calibrator Reading:	186.0	cps
Sensitivity:	1.0500	GAPI/cps