



**SUPERIOR**  
Hays,  
Kansas

**DUAL**  
INDUCTION  
LOG

Company DIXON ENERGY, INC.  
Well ROLF UNIT #1  
Field BARKIN  
County KINGMAN  
State KANSAS

Company DIXON ENERGY, INC.  
Well ROLF UNIT #1  
Field BARKIN  
County KINGMAN  
State KANSAS

Location: API # : 15-095-22209-0000  
330' FSL & 990' FWL  
SEC 18 TWP 30S RGE 10W  
Permanent Datum GROUND LEVEL Elevation 1786  
Log Measured From KELLY BUSHING 10' A.G.L.  
Drilling Measured From KELLY BUSHING  
Other Services  
CDL/CNL/PE  
MEL/SON  
Elevation  
K.B. 1796  
D.F.  
G.L. 1786

Date	6-29-10
Run Number	ONE
Depth Driller	4875
Depth Logger	4876
Bottom Logged Interval	4874
Top Log Interval	0
Casing Driller	8 5/8" @ 311
Casing Logger	308
Bit Size	7 7/8
Type Fluid in Hole	CHEMICAL MUD
Density / Viscosity	9.4/54
pH / Fluid Loss	9.5/9.6
Source of Sample	FLOWLINE
Rim @ Meas. Temp	.58 @ 100F
Rmf @ Meas. Temp	.43 @ 100F
Rmc @ Meas. Temp	.69 @ 100F
Source of Rmf / Rmc	MEASURED
Rim @ BHT	.47 @ 123F
Time Circulation Stopped	2 HOURS
Time Logger on Bottom	
Maximum Recorded Temperature	123F
Equipment Number	680
Location	HAYS, KS.
Recorded By	JASON CAPPELLUCCI
Witnessed By	RYAN DIXON

<<< Fold Here >>>

All interpretations are opinions based on inferences from electrical or other measurements and we cannot and do not guarantee the accuracy or correctness of any interpretation, and we shall not, except in the case of gross or willful negligence on our part, be liable or responsible for any loss, costs, damages, or expenses incurred or sustained by anyone resulting from any interpretation made by any of our officers, agents or employees. These interpretations are also subject to our general terms and conditions set out in our current Price Schedule.

Comments

THANK YOU FOR USING SUPERIOR WELL SERVICE (785) 628-6395  
DIRECTIONS  
NASHVILLE KS. - 1 S. - 1 1/2 W. - N. INTO



**SUPERIOR**  
Hays,  
Kansas

**MAIN SECTION**

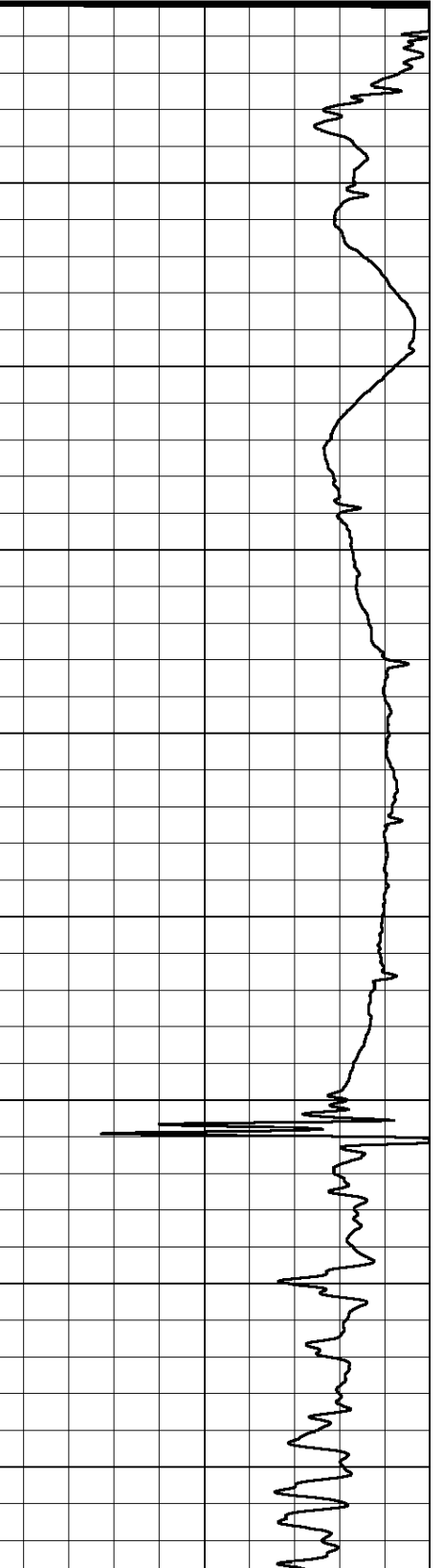
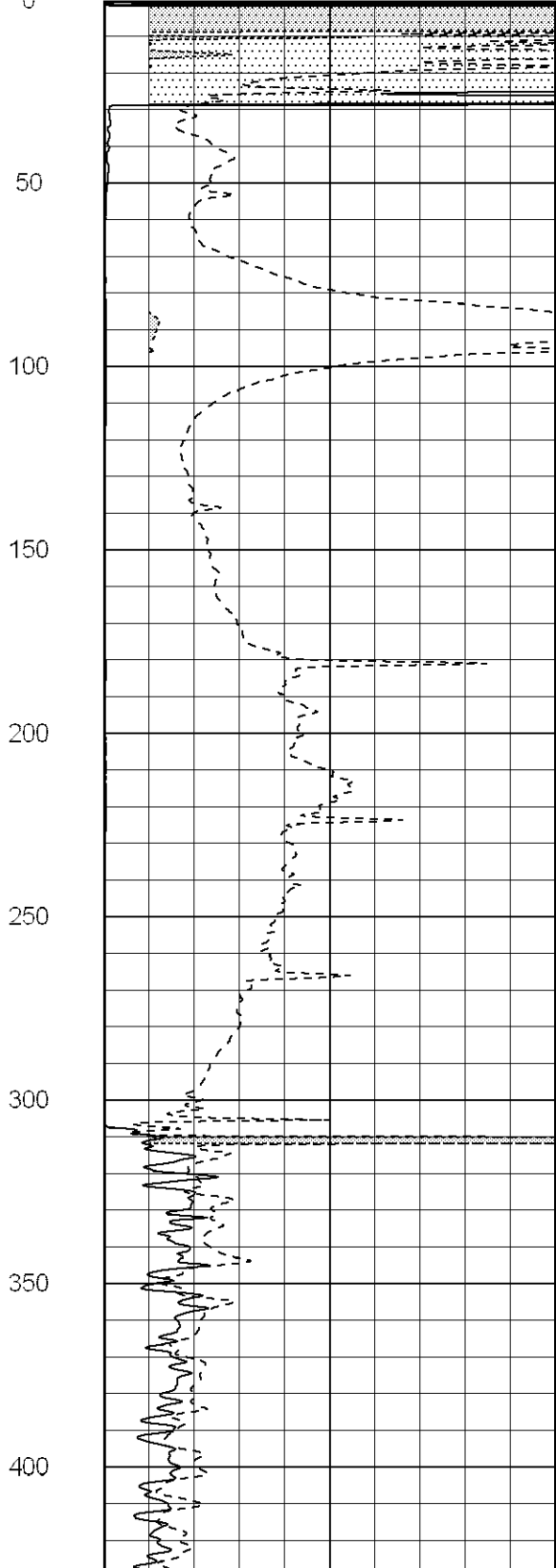
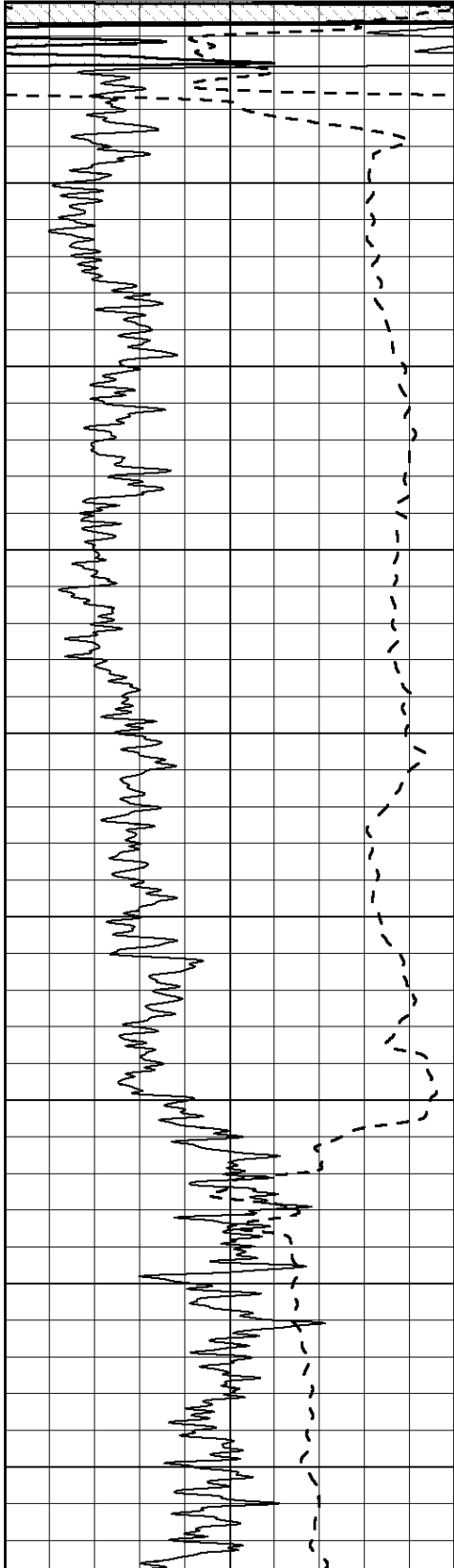
Database File: 005402pe.db  
 Dataset Pathname: pass3.2  
 Presentation Format: \_dil2  
 Dataset Creation: Tue Jun 29 12:37:41 2010 by Calc Open-Cased 090629  
 Charted by: Depth in Feet scaled 1:600

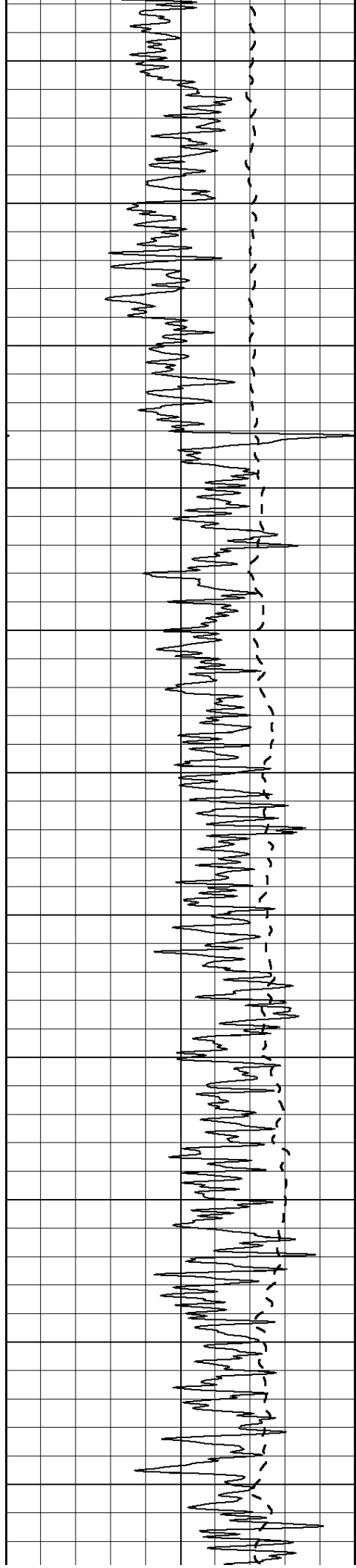
0	Gamma Ray (GAPI)	150
-100	SP (mV)	100

0	RLL3 (Ohm-m)	50
0	Deep Induction (Ohm-m)	50

1000	CILD (mmho/m)	0
------	---------------	---

50	RILD X10 (Ohm-m)	500
50	RLL3 X10 (Ohm-m)	500





450

500

550

600

650

700

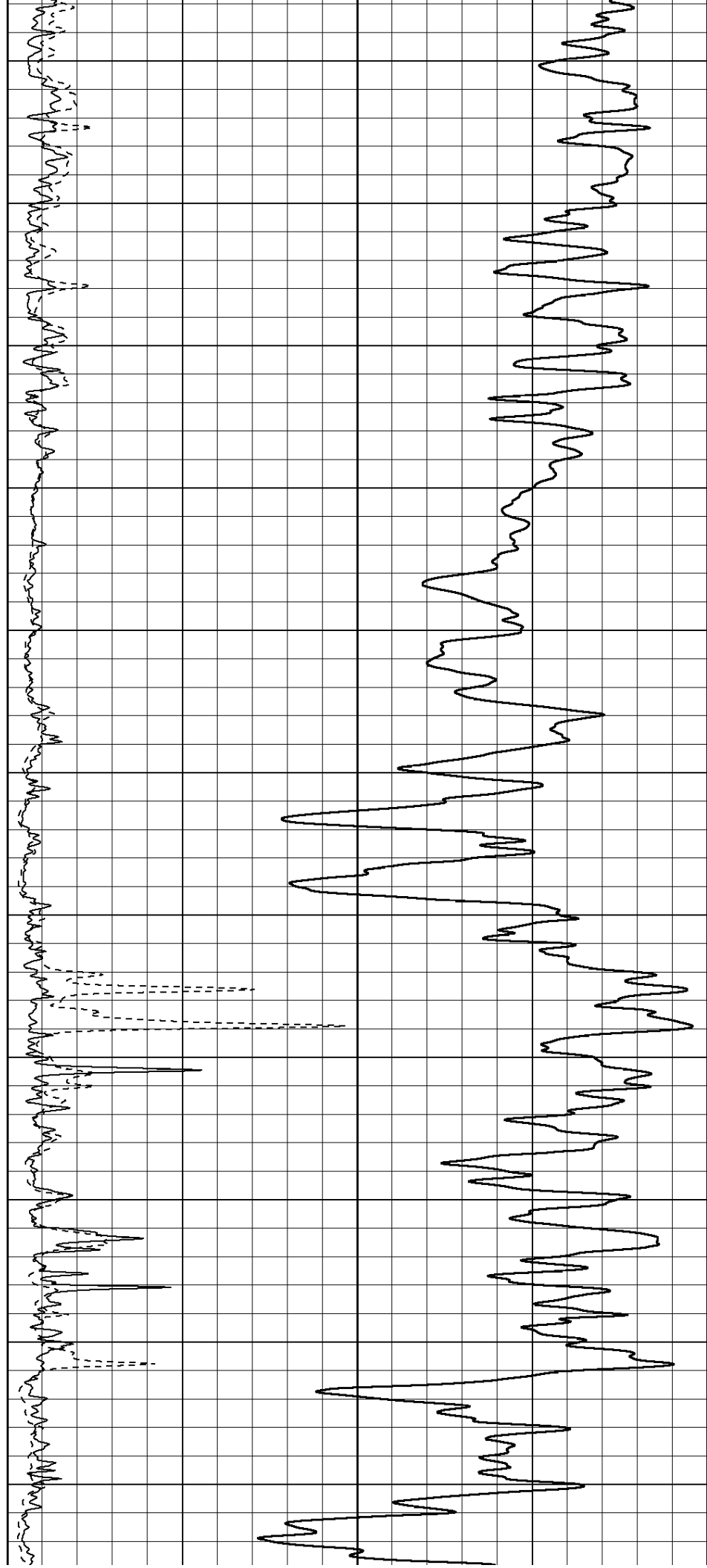
750

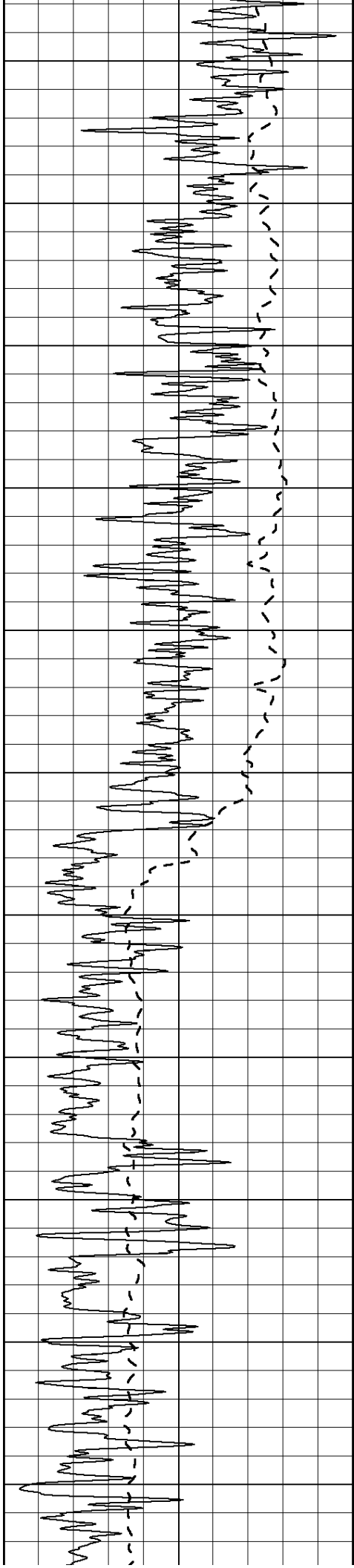
800

850

900

950





1000

1050

1100

1150

1200

1250

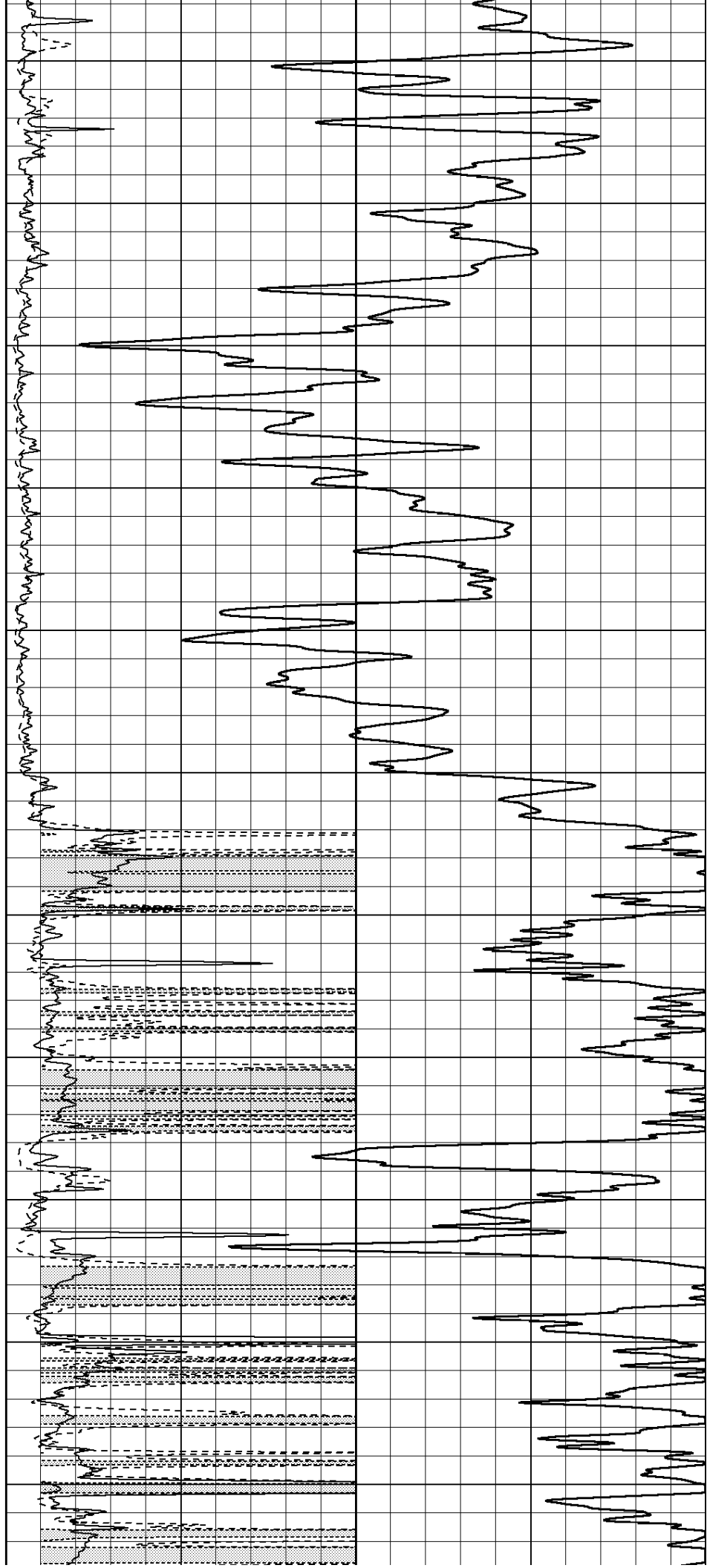
1300

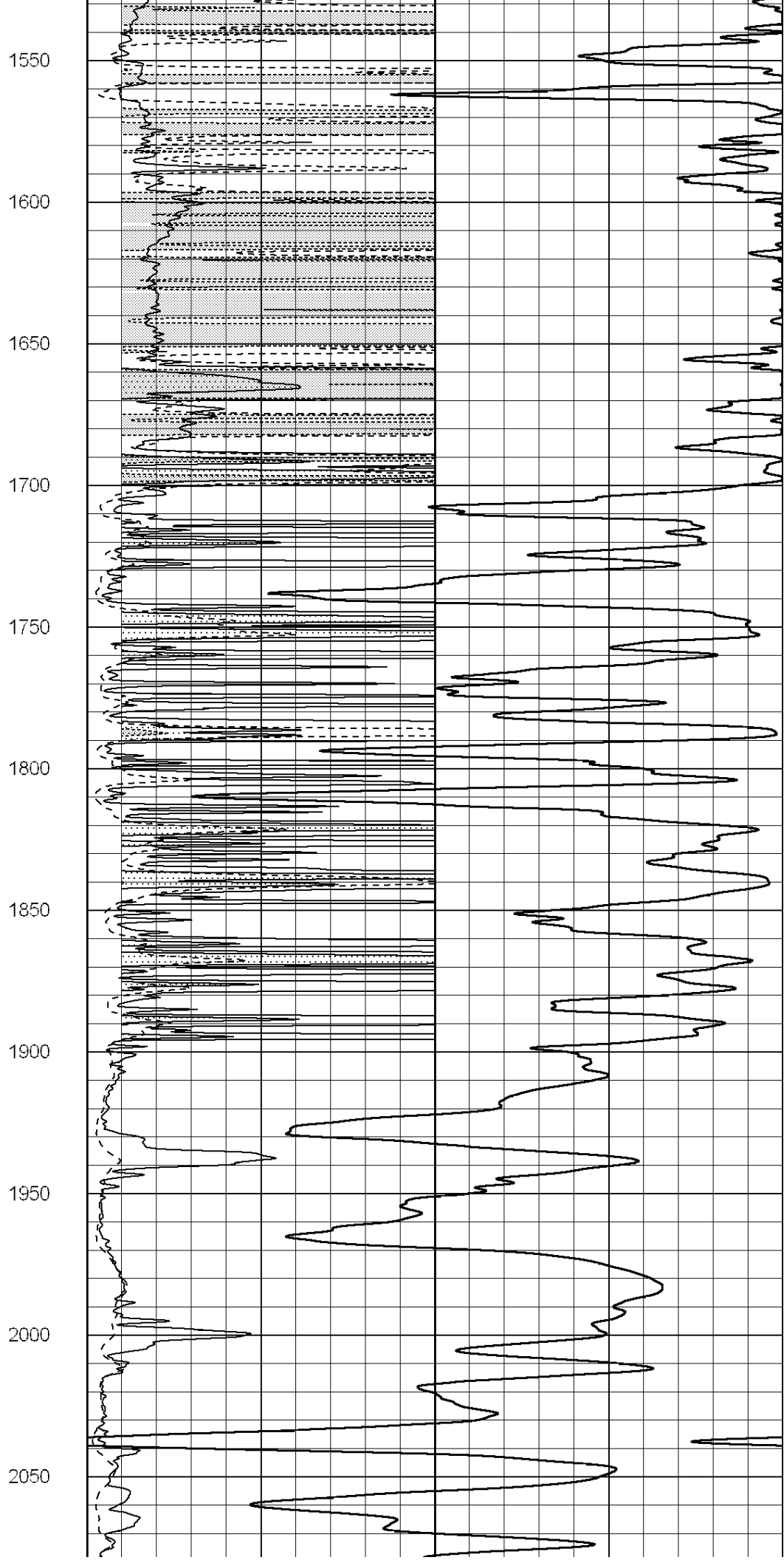
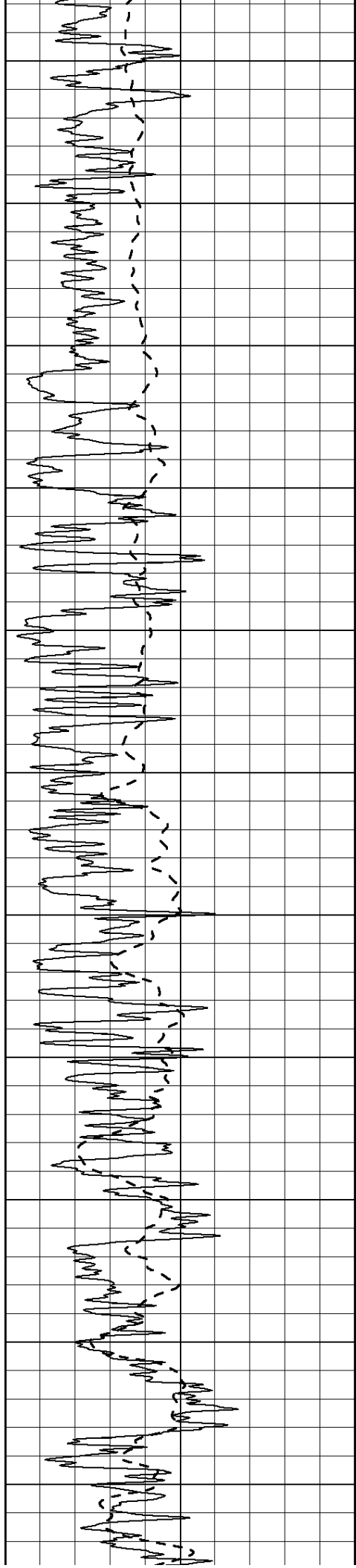
1350

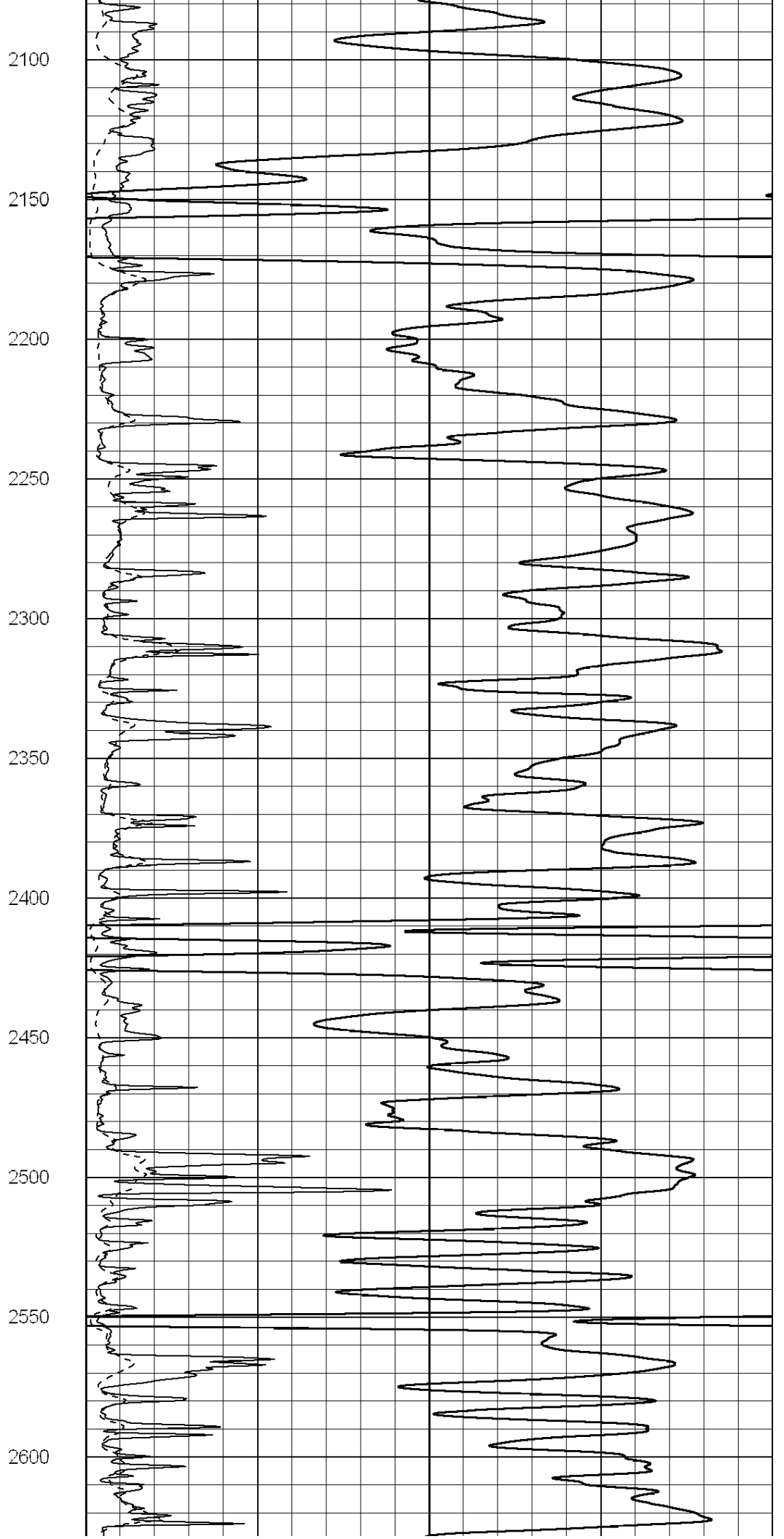
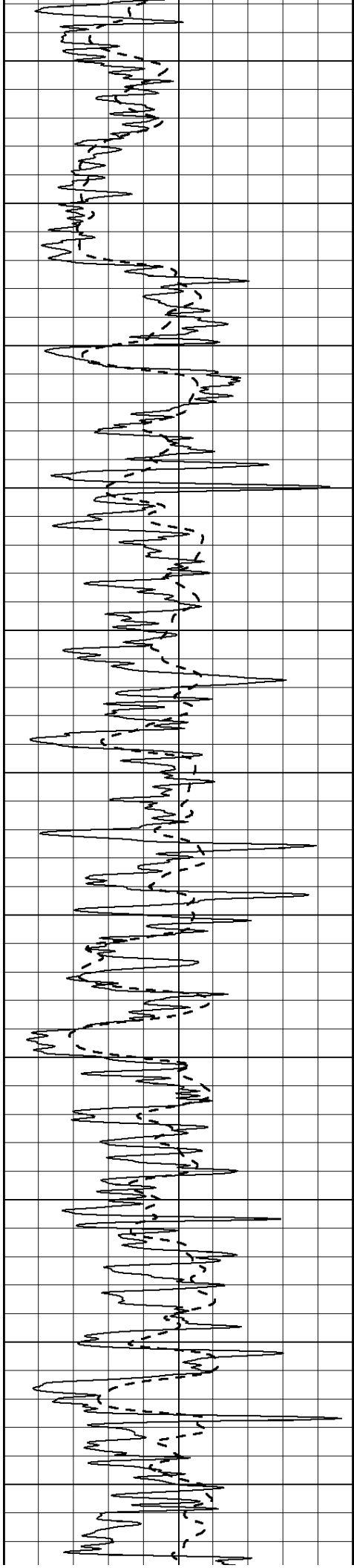
1400

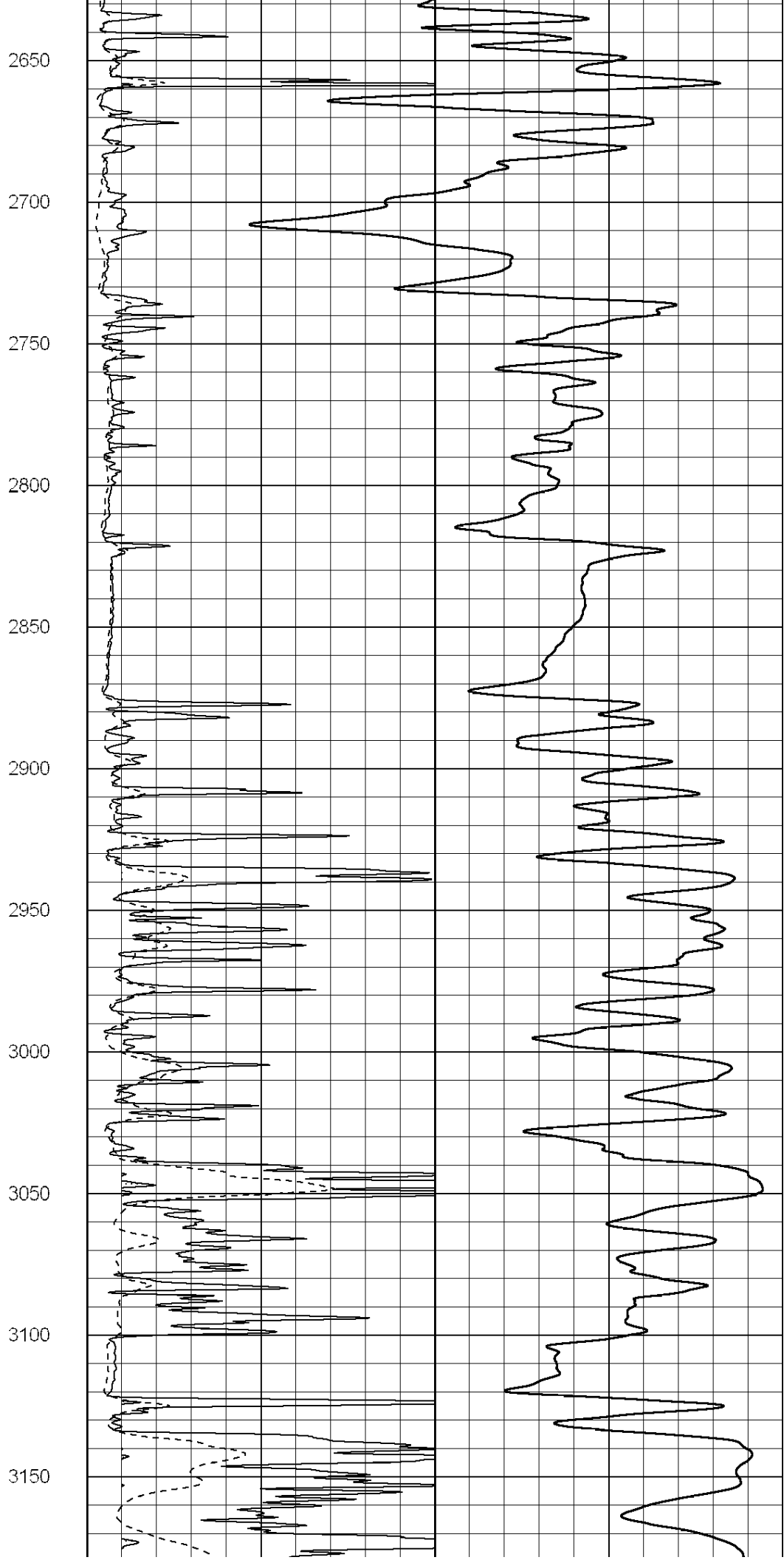
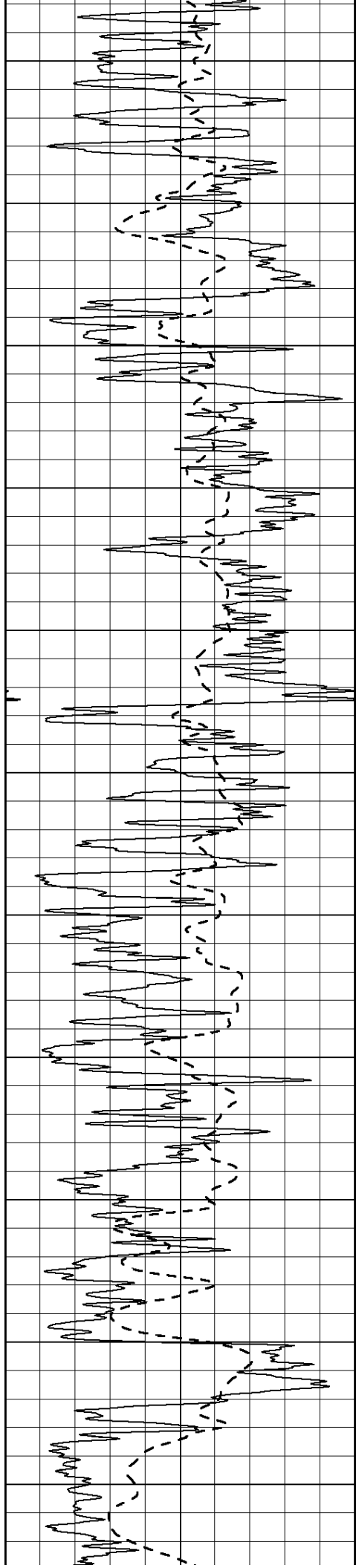
1450

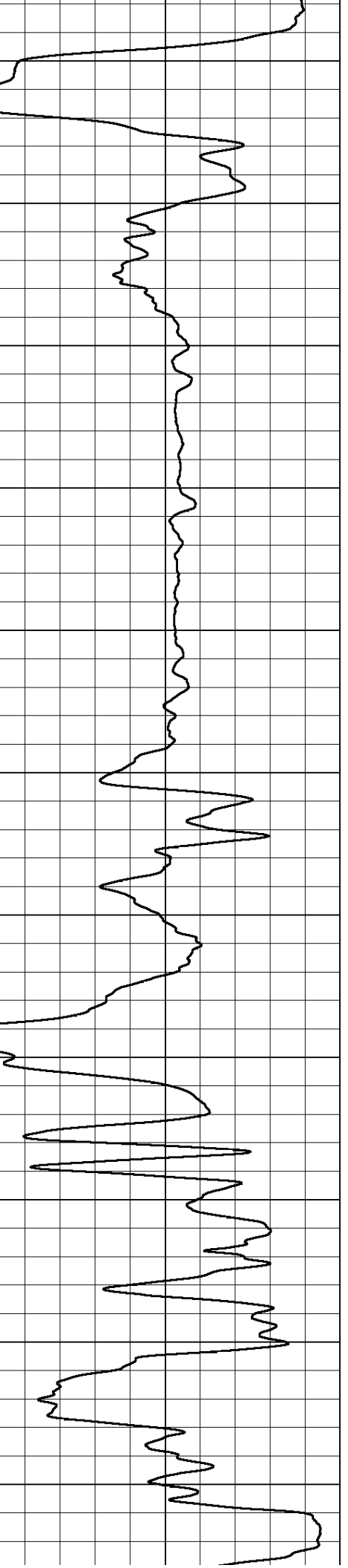
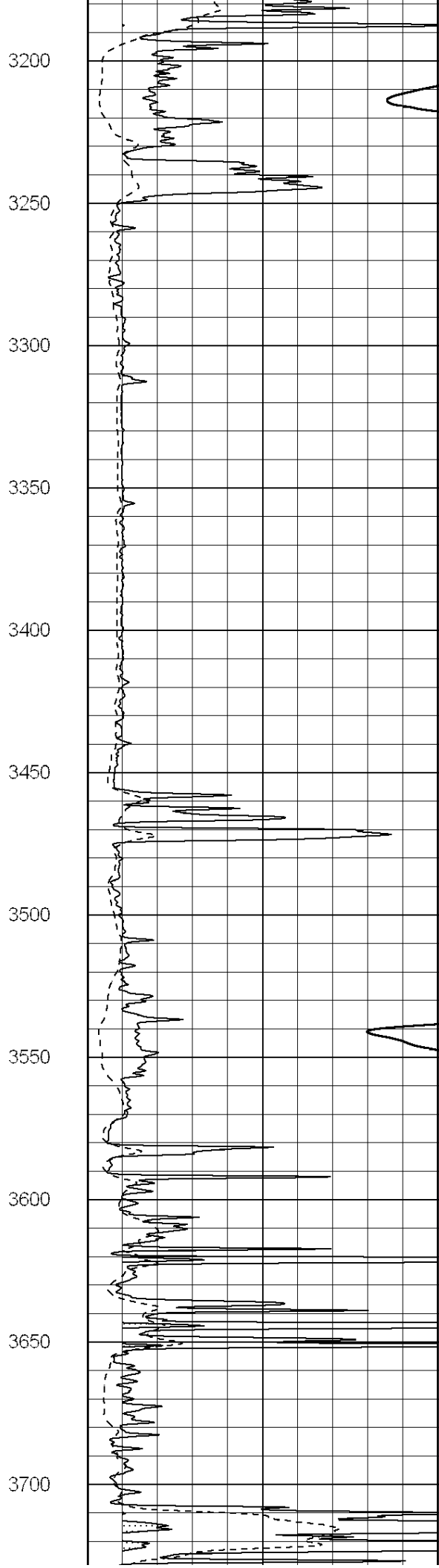
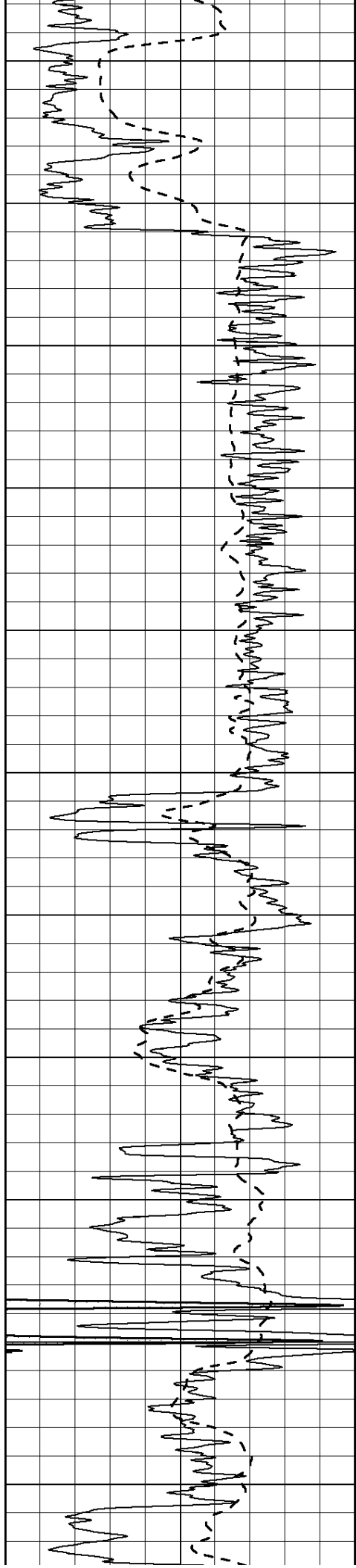
1500

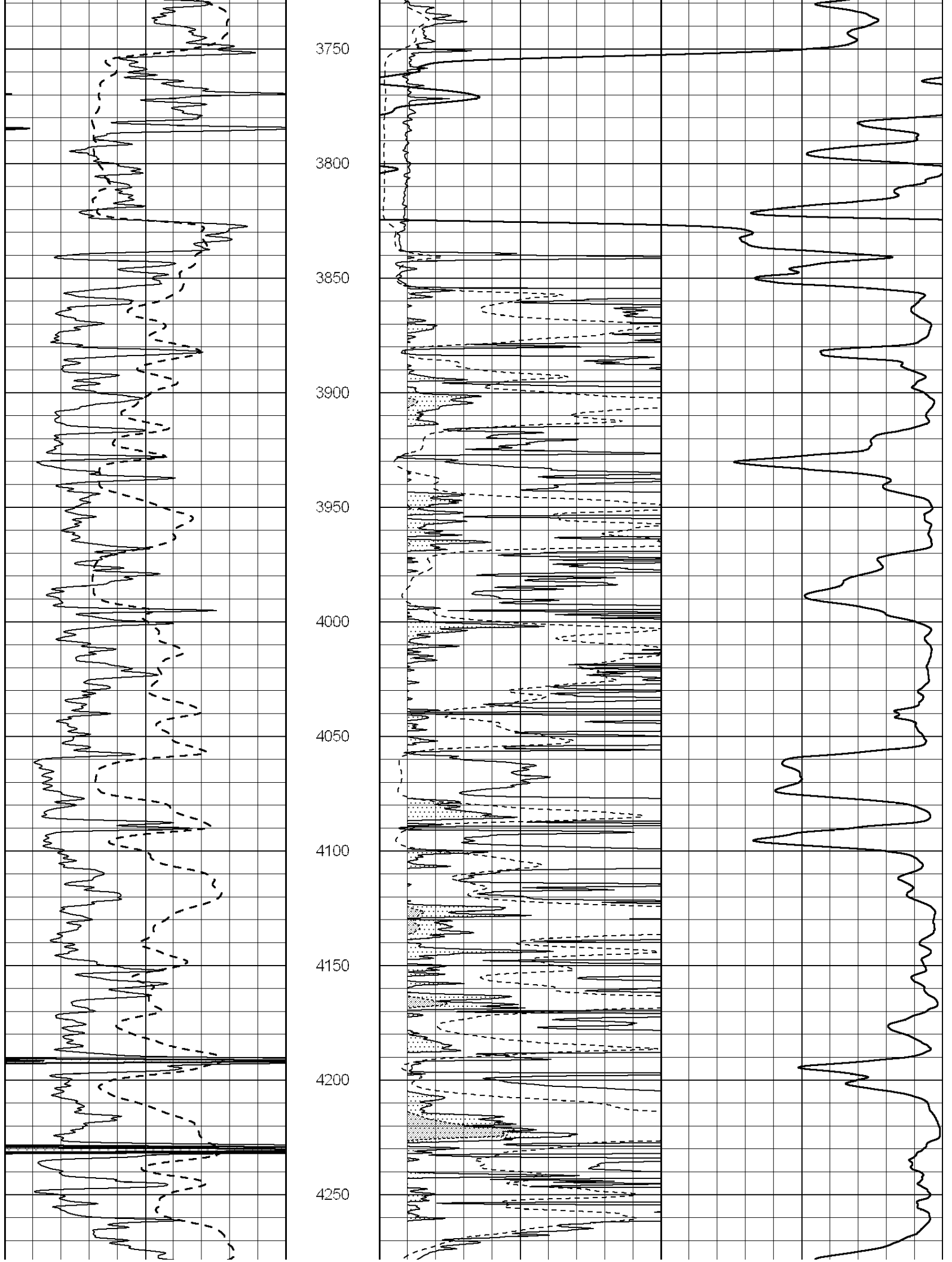


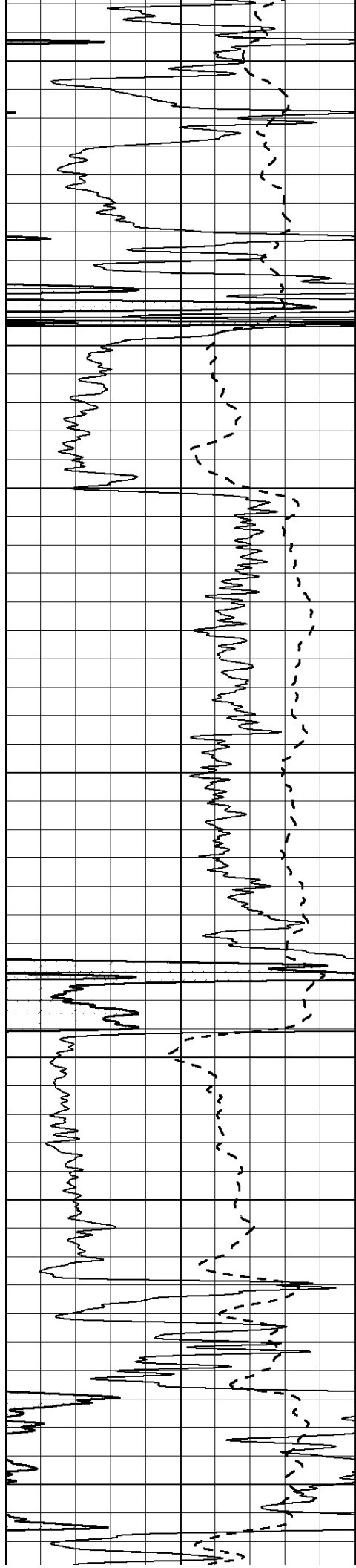












4300

4350

4400

4450

4500

4550

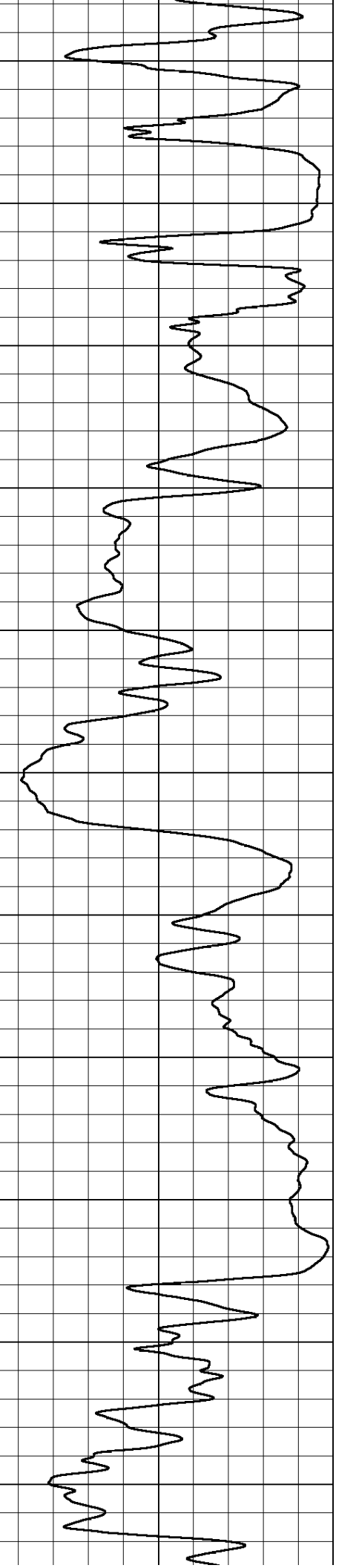
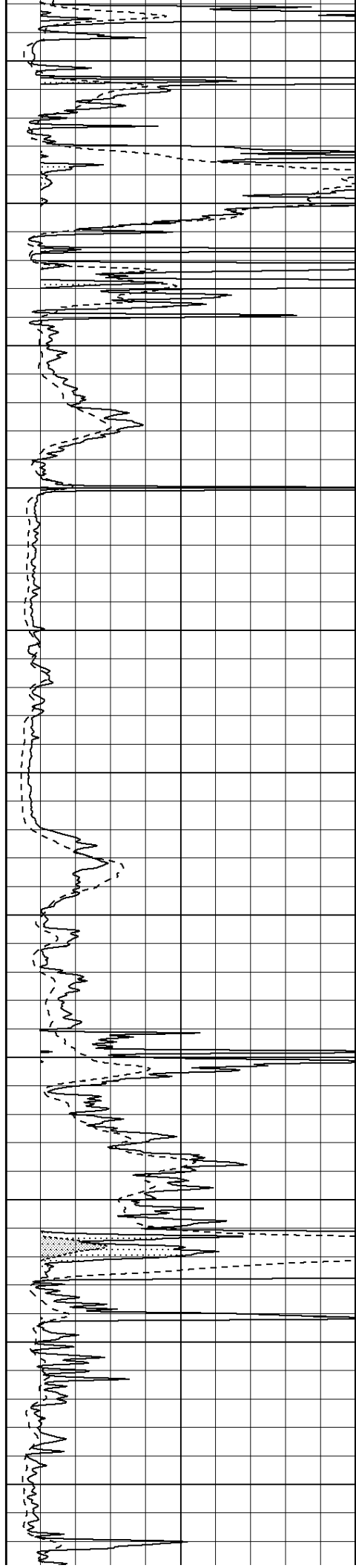
4600

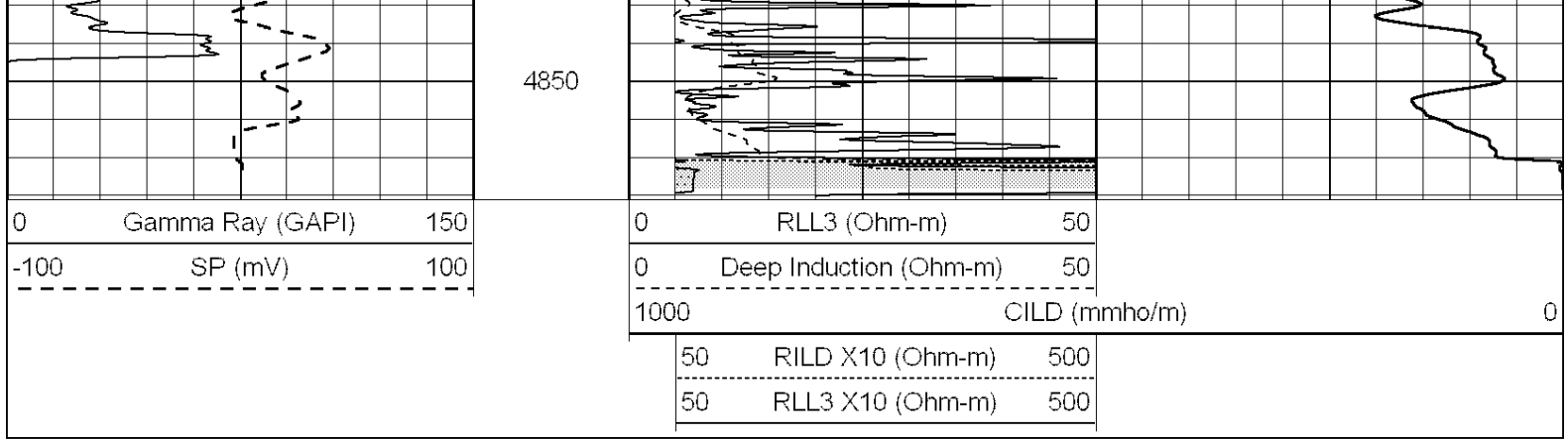
4650

4700

4750

4800



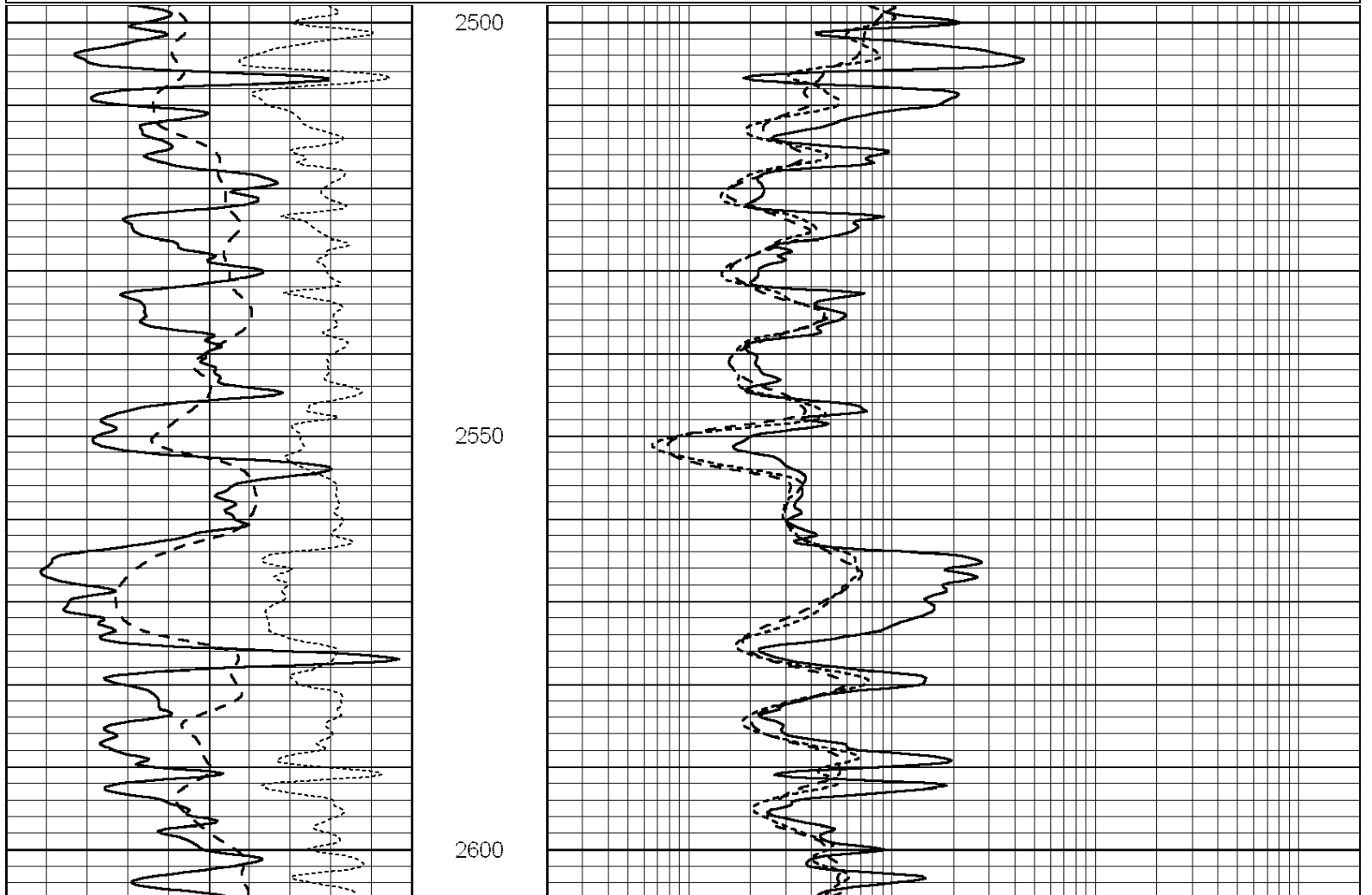


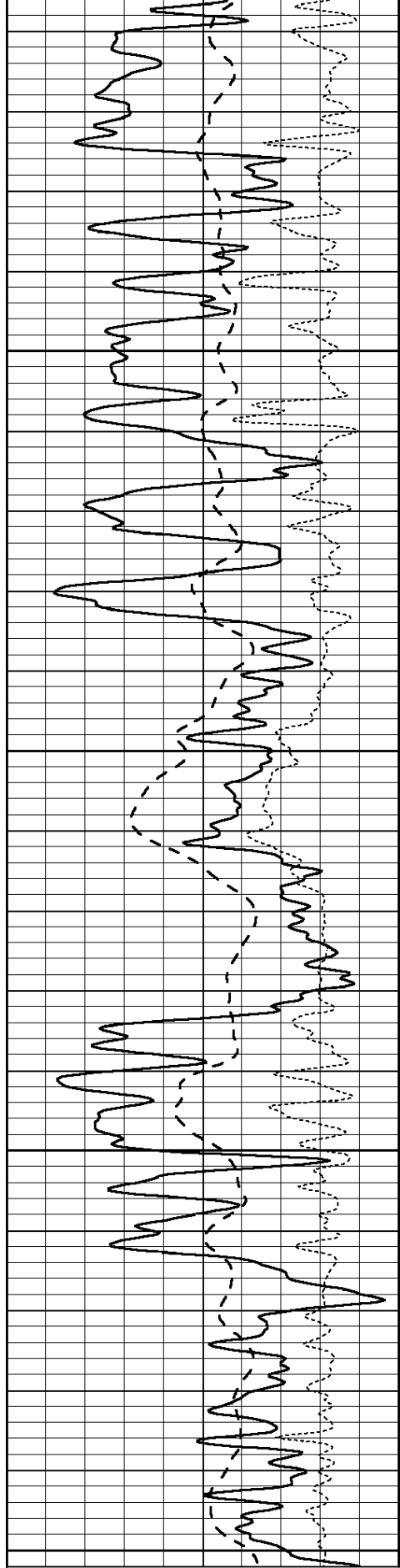
SUPERIOR  
Hays,  
Kansas

# MAIN SECTION

Database File: 005402pe.db  
 Dataset Pathname: pass3.1  
 Presentation Format: \_dil  
 Dataset Creation: Tue Jun 29 12:02:21 2010 by Calc Open-Cased 090629  
 Charted by: Depth in Feet scaled 1:240

0	GAMMA RAY (GAPI)	150	0.2	SHALLOW GUARD (Ohm-m)	2000
-100	SP (mV)	100	0.2	MEDIUM INDUCTION (Ohm-m)	2000
-250	Rxo/Rt	50	0.2	DEEP INDUCTION (Ohm-m)	2000





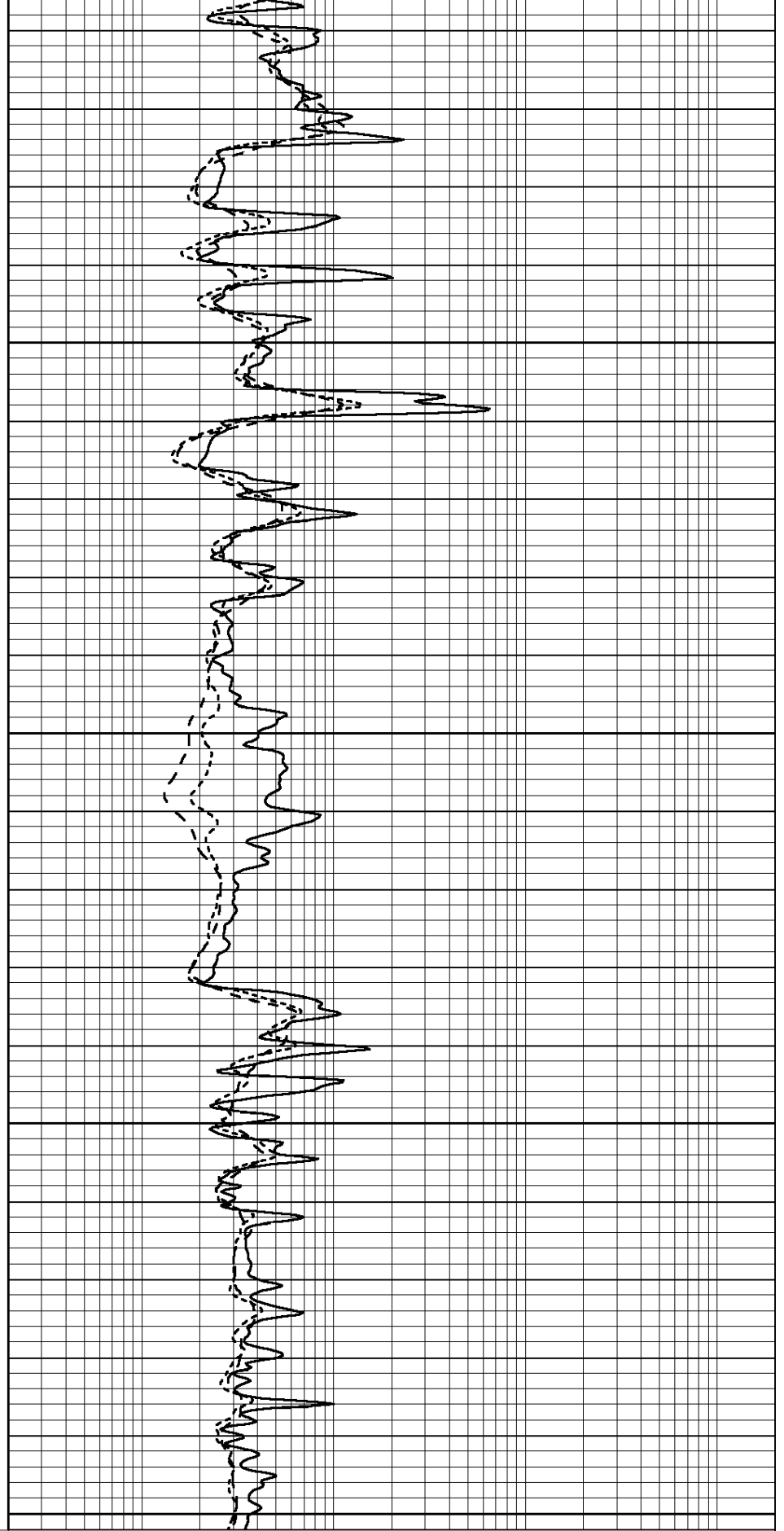
2650

2700

2750

2800

0	GAMMA RAY (GAPI)	150
-100	SP (mV)	100
-250	Rxo/Rt	50



0.2	SHALLOW GUARD (Ohm-m)	2000
0.2	MEDIUM INDUCTION (Ohm-m)	2000
0.2	DEEP INDUCTION (Ohm-m)	2000



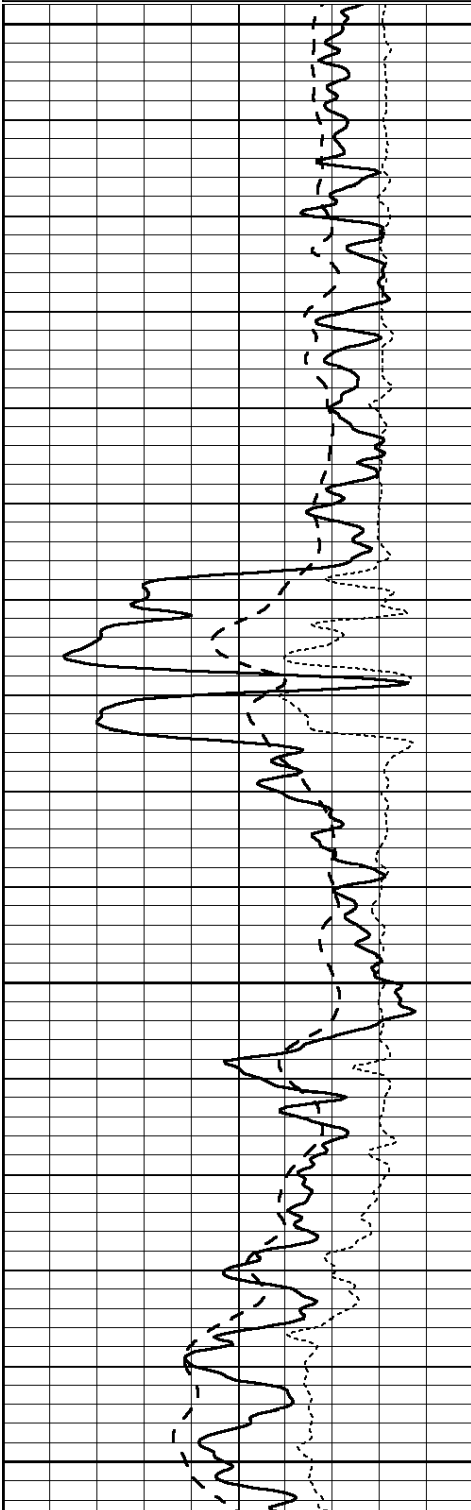
SUPERIOR  
Hays,  
Kansas

# MAIN SECTION

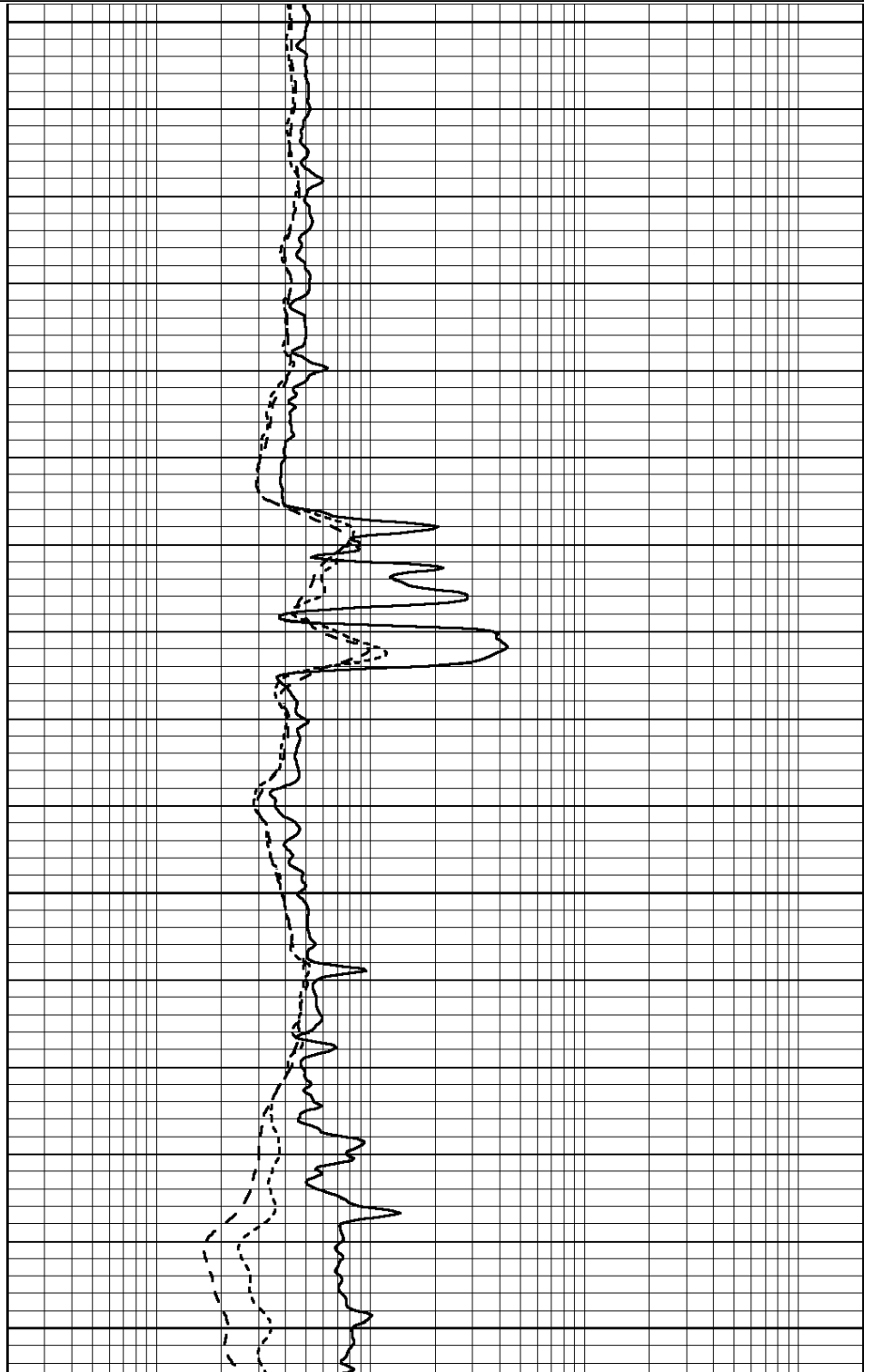
Database File: 005402pe.db  
 Dataset Pathname: pass3.1  
 Presentation Format: \_dil  
 Dataset Creation: Tue Jun 29 12:02:21 2010 by Calc Open-Cased 090629  
 Charted by: Depth in Feet scaled 1:240

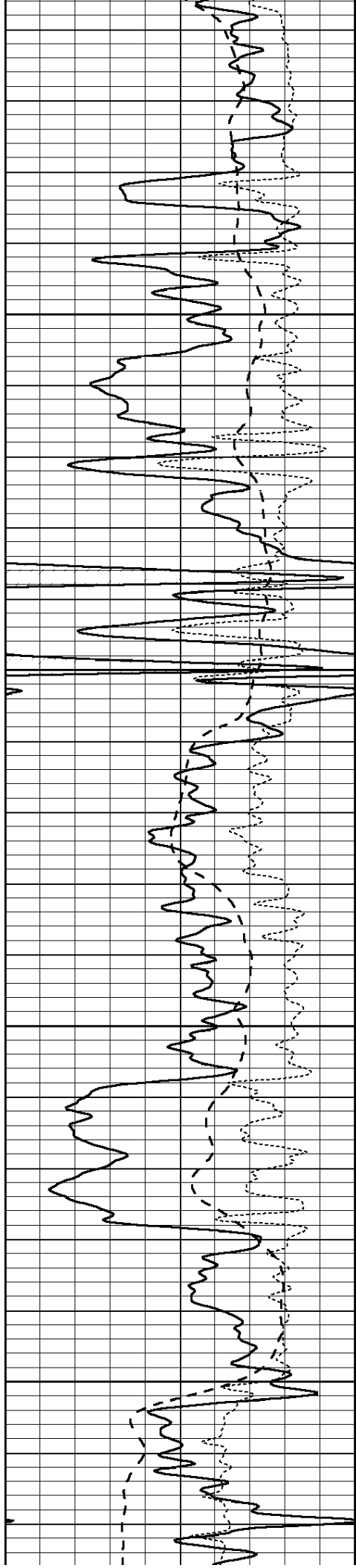
0	GAMMA RAY (GAPI)	150
-100	SP (mV)	100
-250	Rxo/Rt	50

0.2	SHALLOW GUARD (Ohm-m)	2000
0.2	MEDIUM INDUCTION (Ohm-m)	2000
0.2	DEEP INDUCTION (Ohm-m)	2000



3400  
3450  
3500  
3550



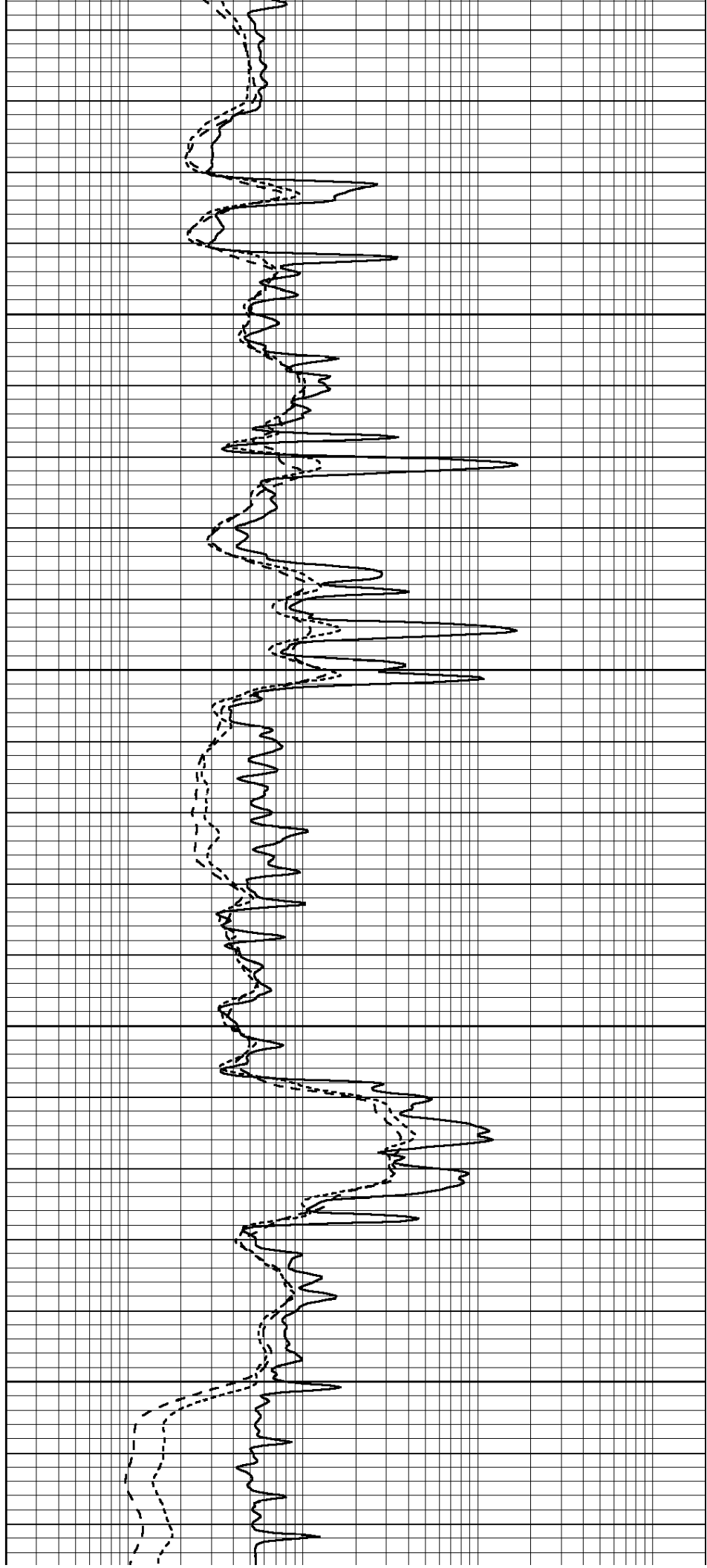


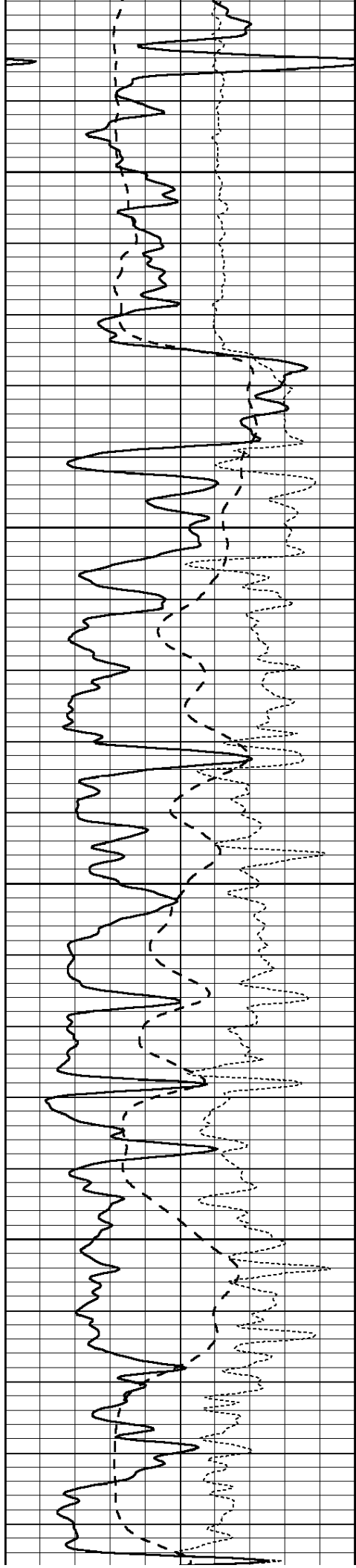
3600

3650

3700

3750



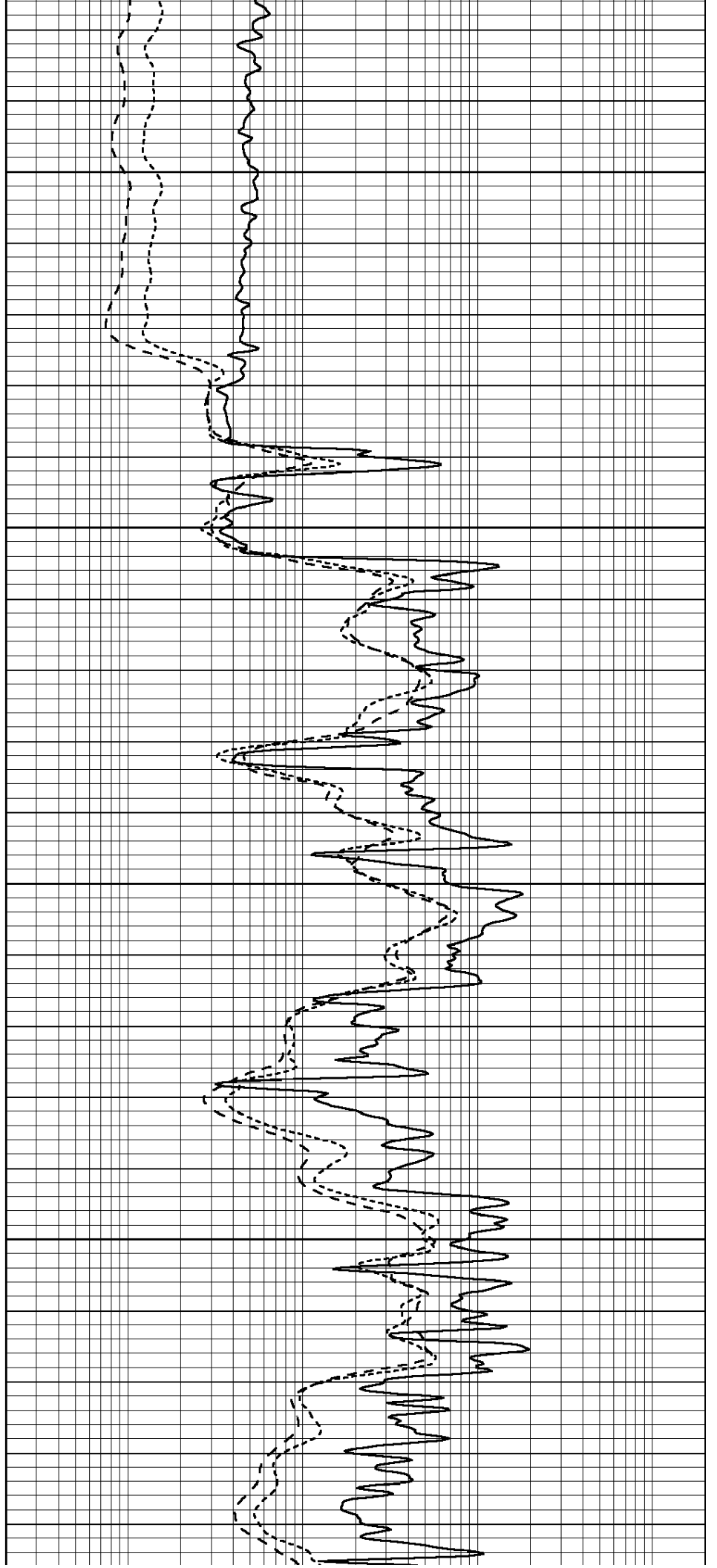


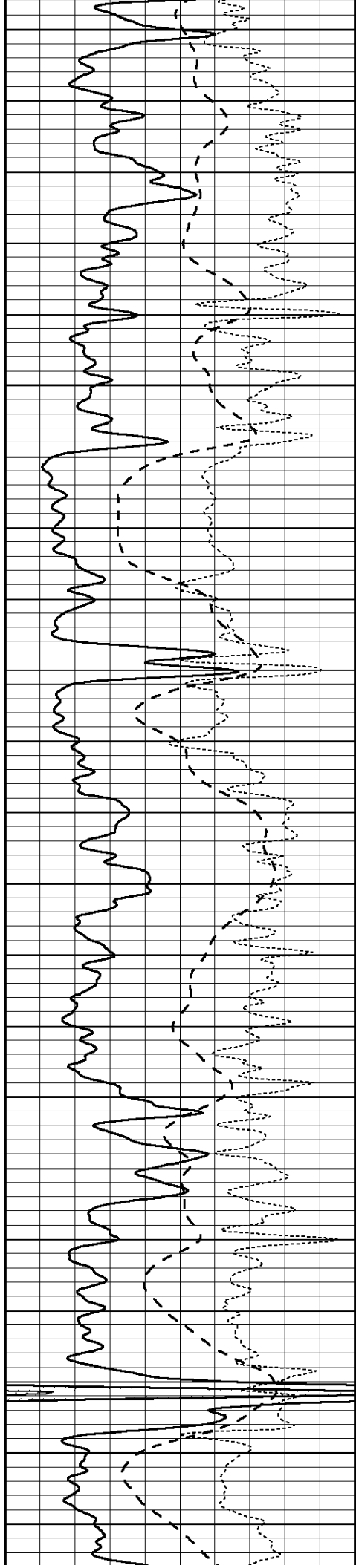
3800

3850

3900

3950





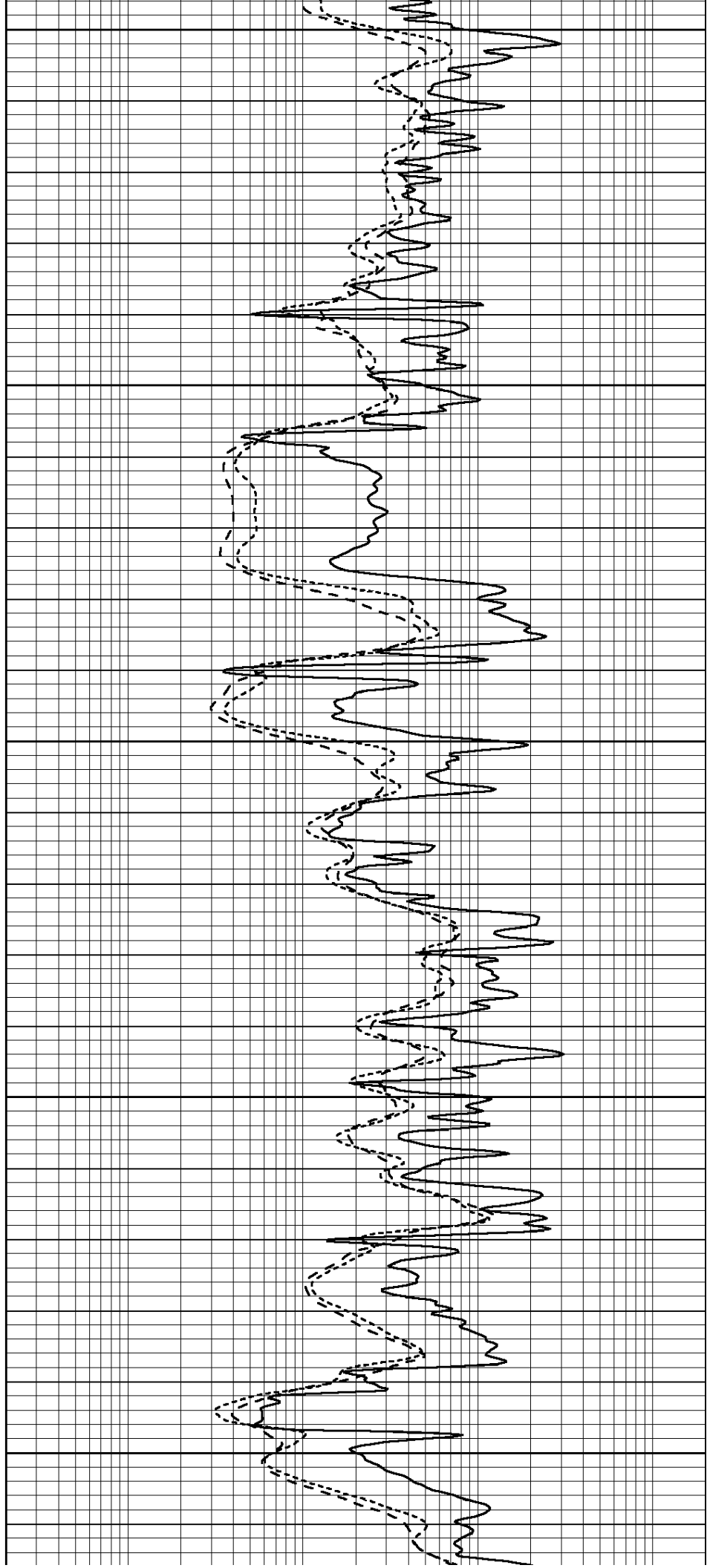
4000

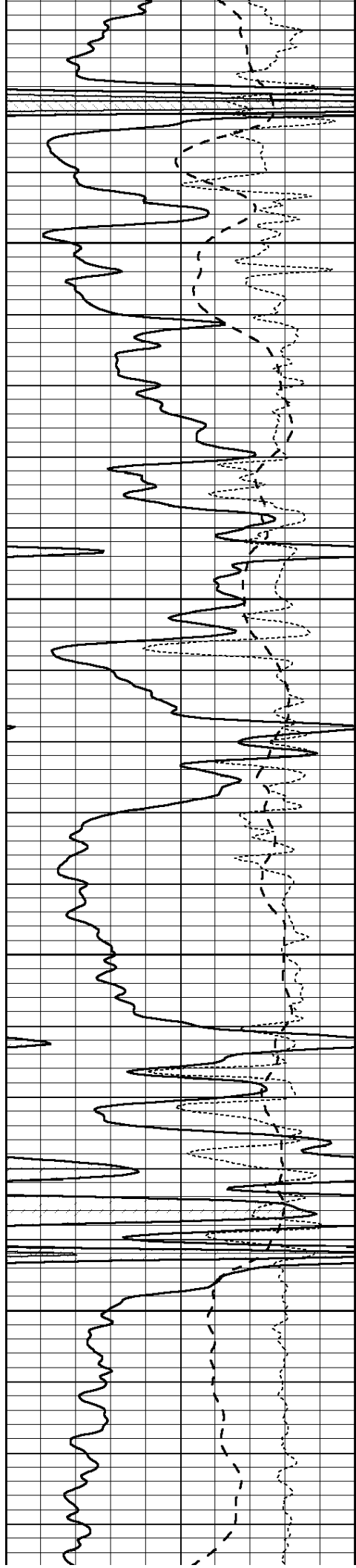
4050

4100

4150

4200



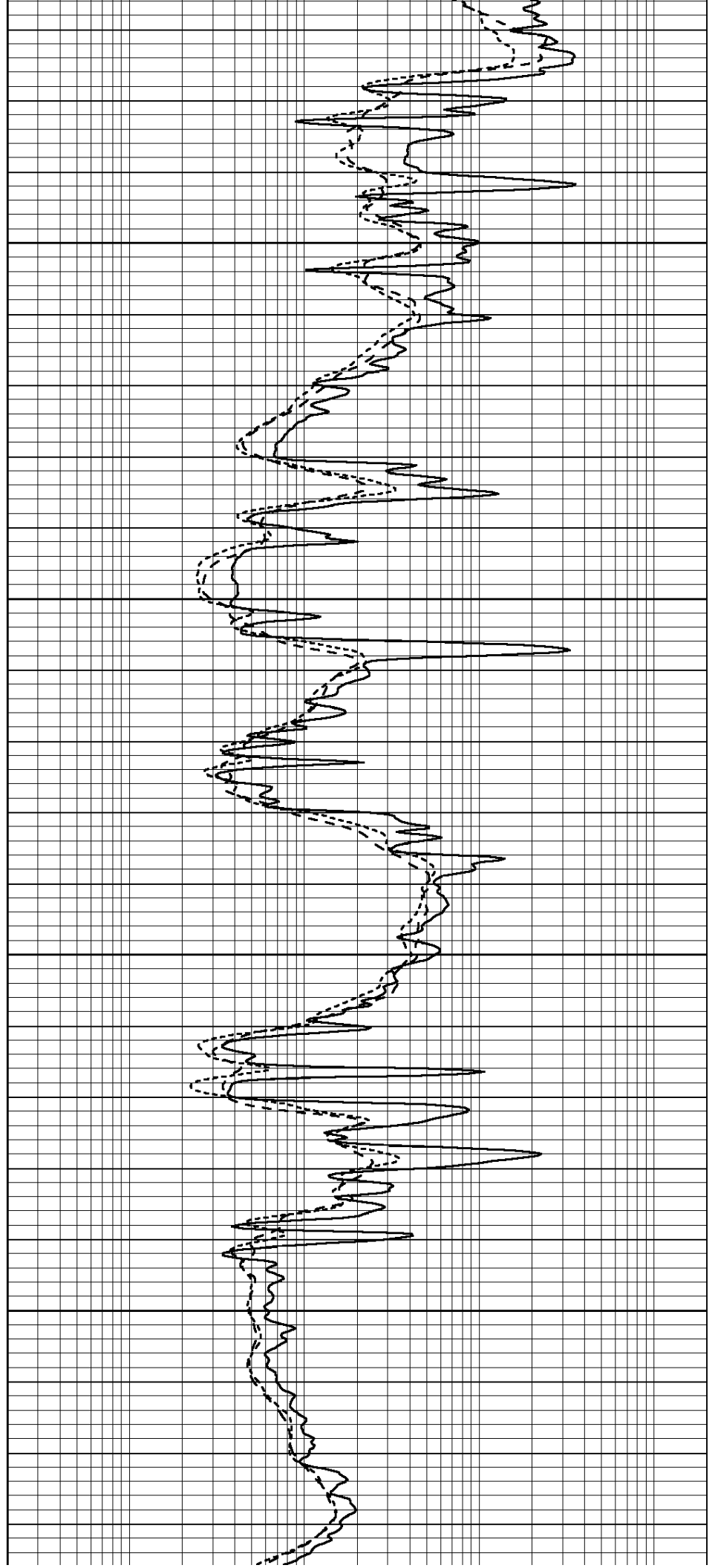


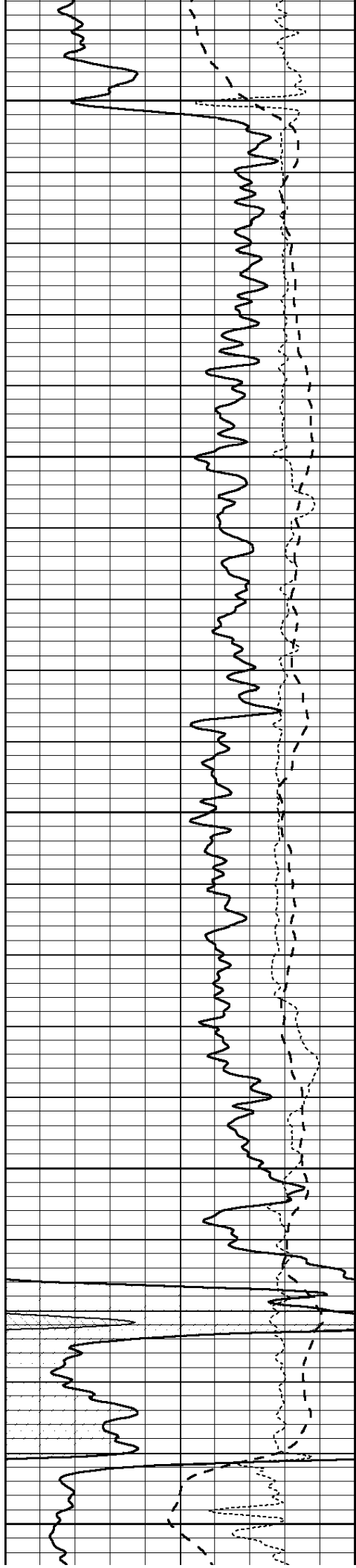
4250

4300

4350

4400





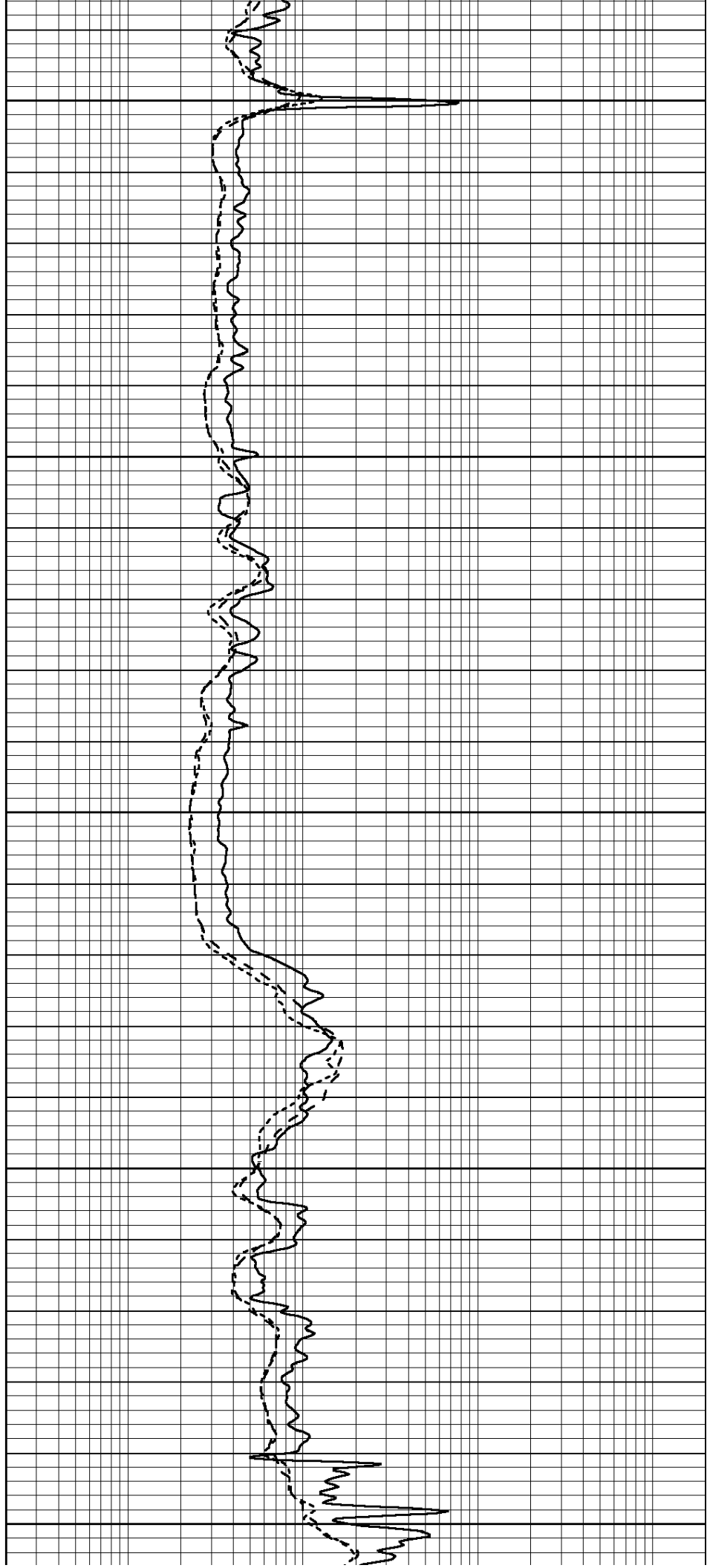
4450

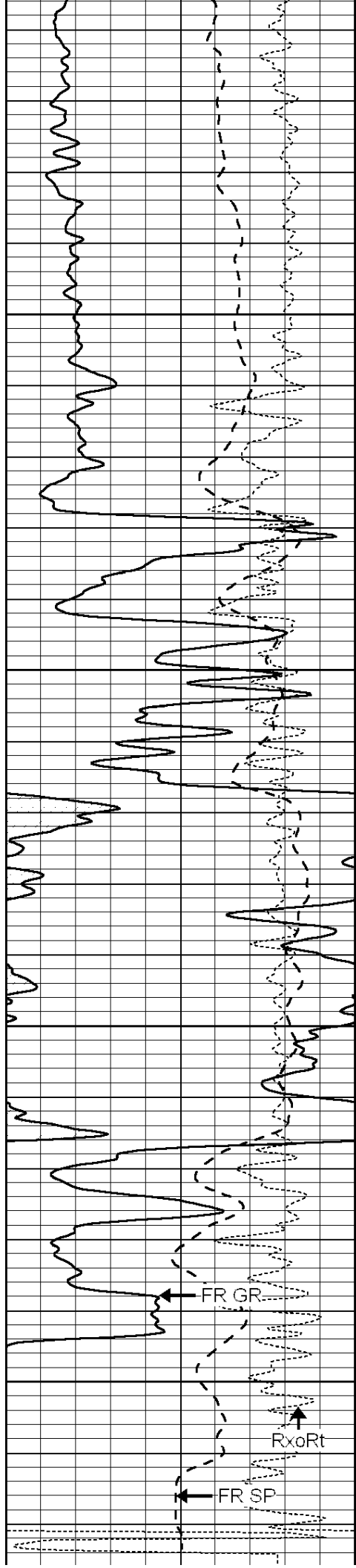
4500

4550

4600

4650





4700

4750

4800

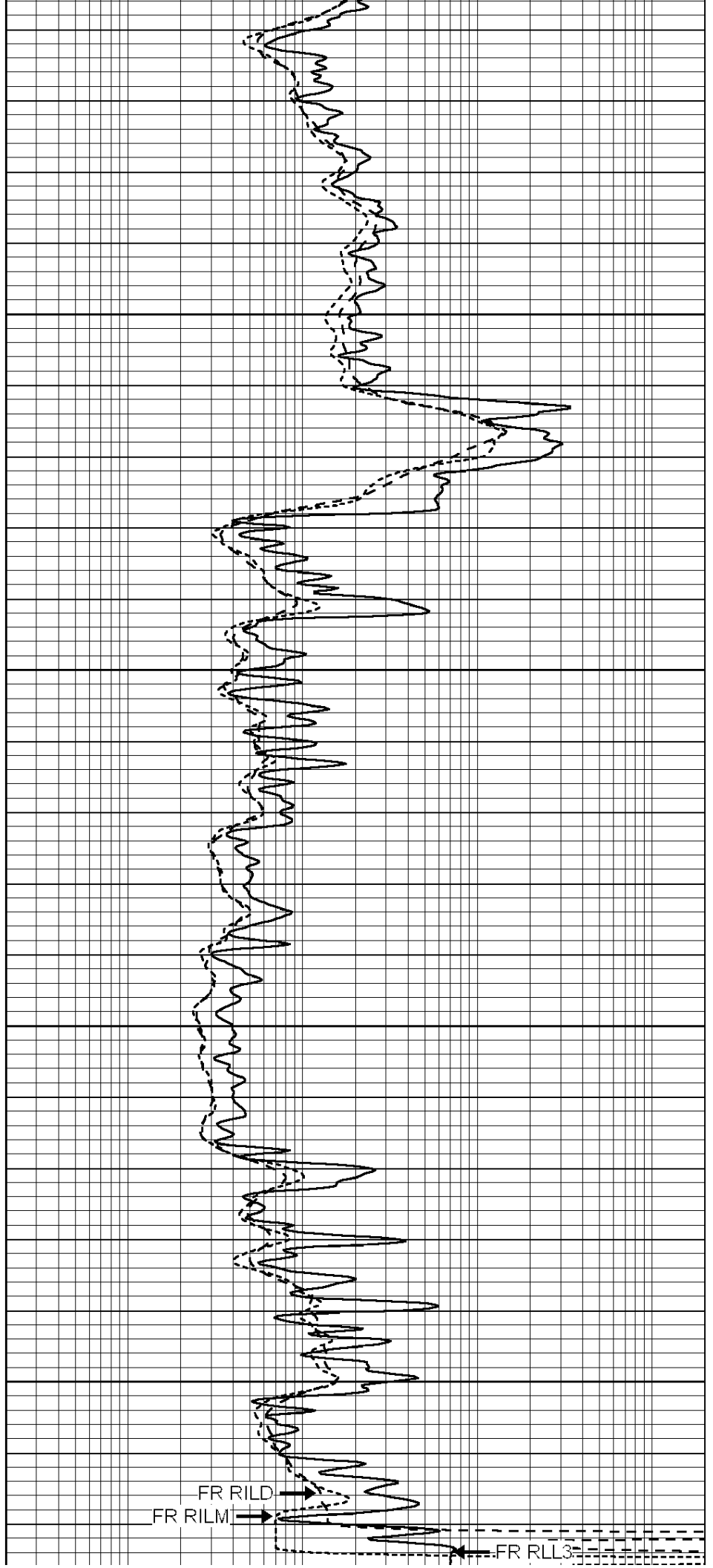
4850

FR GR

RxoRt

FR SP

ITD 4876



FR RILD

FR RILM

FR RLL3

LTD 4370

0	GAMMA RAY (GAPI)	150
-100	SP (mV)	100
-250	Rxo/Rt	50

0.2	SHALLOW GUARD (Ohm-m)	2000
0.2	MEDIUM INDUCTION (Ohm-m)	2000
0.2	DEEP INDUCTION (Ohm-m)	2000



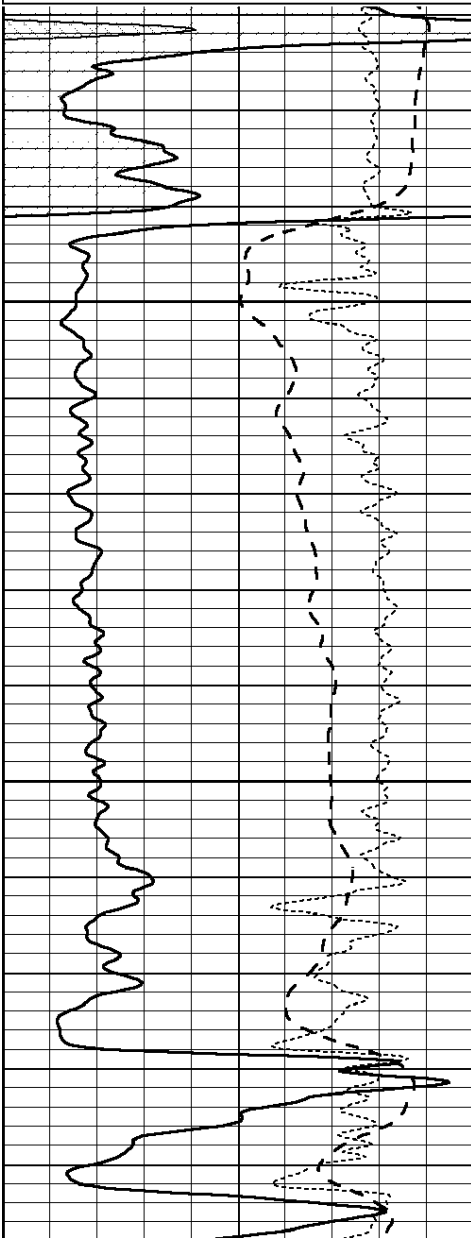
SUPERIOR  
Hays,  
Kansas

# REPEAT SECTION

Database File: 005402pe.db  
 Dataset Pathname: pass2.1  
 Presentation Format: \_dil  
 Dataset Creation: Tue Jun 29 12:00:25 2010 by Calc Open-Cased 090629  
 Charted by: Depth in Feet scaled 1:240

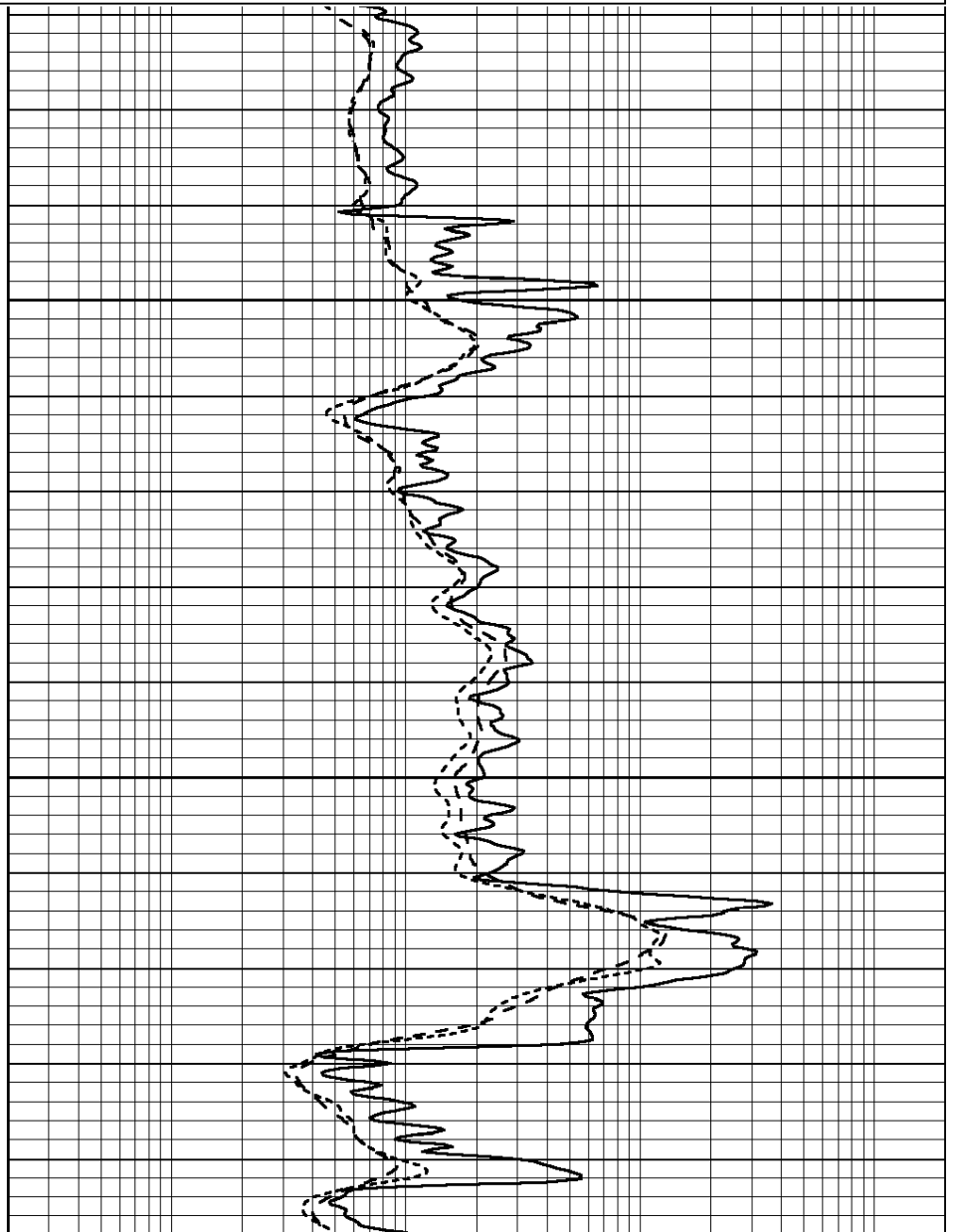
0	GAMMA RAY (GAPI)	150
-100	SP (mV)	100
-250	Rxo/Rt	50

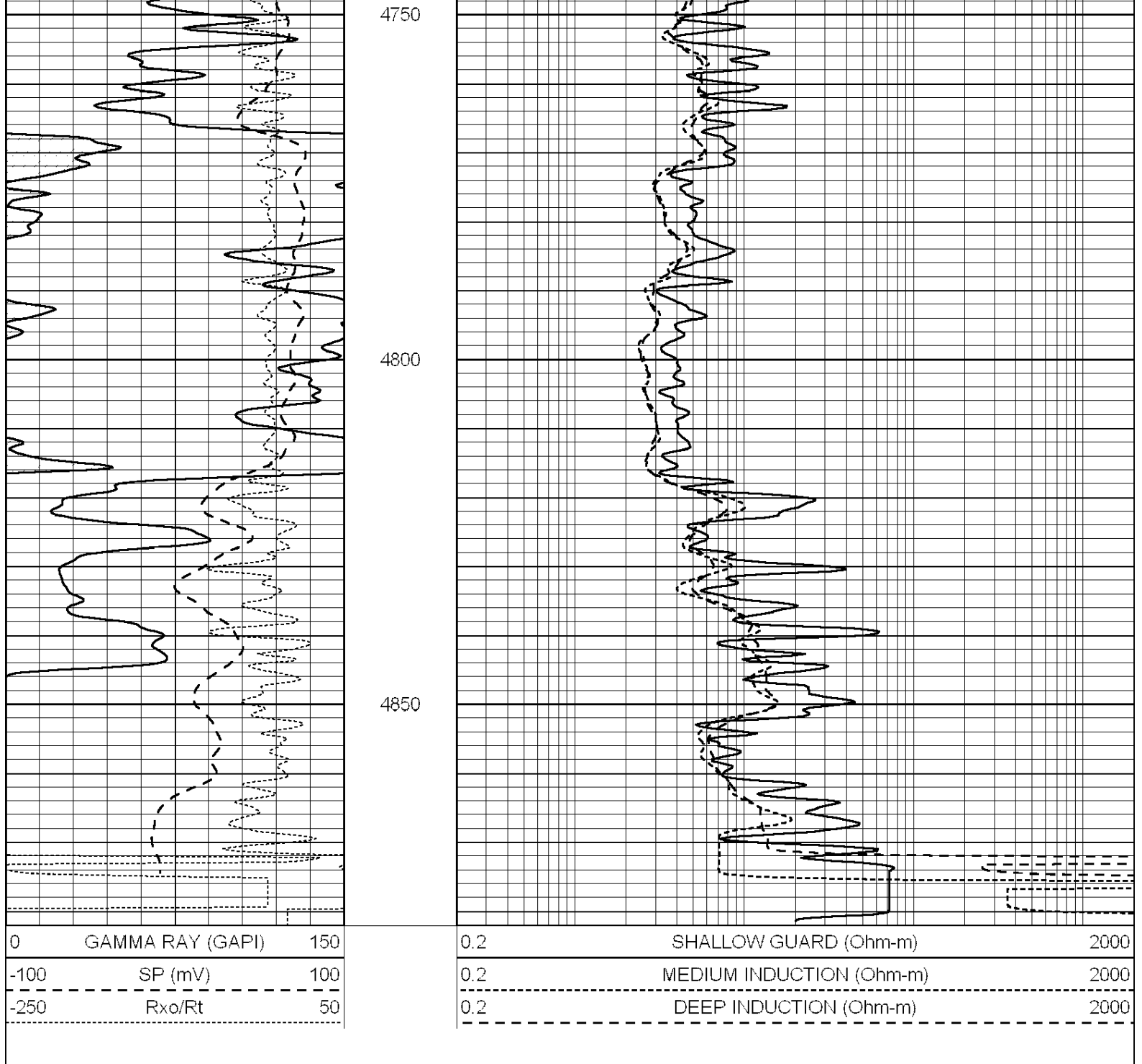
0.2	SHALLOW GUARD (Ohm-m)	2000
0.2	MEDIUM INDUCTION (Ohm-m)	2000
0.2	DEEP INDUCTION (Ohm-m)	2000



4650

4700





### Calibration Report

Database File: 005402pe.db  
 Dataset Pathname: pass3.2  
 Dataset Creation: Tue Jun 29 12:37:41 2010 by Calc Open-Cased 090629

### Dual Induction Calibration Report

Serial-Model: PROBE8-DILG  
 Surface Cal Performed: Fri Aug 01 06:33:19 2008  
 Downhole Cal Performed: Mon Jul 28 11:08:27 2008  
 After Survey Verification Performed: Mon Jul 28 11:08:27 2008

#### Surface Calibration

Loop:	Readings		V	References		mmho/m	Results	
	Air	Loop		Air	Loop		m	b
Deep	0.015	0.648	V	0.000	400.000	mmho/m	632.616	-9.730
Medium	0.020	0.700	V	0.000	400.000	mmho/m	605.040	17.000

Medium	0.029	0.790	V	0.000	464.000	mmho/m	603.049	-17.680
Internal:	Zero	Cal		Zero	Cal		m	b
Deep	0.017	0.657	V	0.000	400.000	mmho/m	625.153	-10.619
Medium	0.016	0.757	V	0.000	464.000	mmho/m	625.992	-9.739

Downhole Calibration								
	Readings			References			Results	
	Zero	Cal		Zero	Cal		m'	b'
Deep	0.000	0.000	mmho/m	2.011	405.777	mmho/m	1.000	0.000
Medium	0.000	0.000	mmho/m	7.590	503.393	mmho/m	1.000	0.000
LL3		7.500	V		1500.000	Ohm-m		
		0.000	V		20.000	Ohm-m		
		-6.500	V		3800.000	mmho-m		

After Survey Verification								
	Readings			Targets			Results	
	Zero	Cal		Zero	Cal		m'	b'
Deep	0.000	0.000	mmho/m	0.000	0.000	mmho/m	0.000	0.000
Medium	0.000	0.000	mmho/m	0.000	0.000	mmho/m	0.000	0.000
LL3		1.000	Ohm-m		1.000	Ohm-m		
		0.000	Ohm-m		0.000	Ohm-m		
		1.000	mmho-m		1.000	mmho-m		

Litho Density Calibration Report  
 Serial: 002    Model: PRB  
 Performed Mon Oct 29 15:40:49 2007

Litho Density Calibration								
	Background		Magnesium		Aluminum		Sandstone	
Window 1	1056.3		9118.0		2809.7		10378.4	cps
Window 2	969.9		7671.9		2431.6		8565.8	cps
Window 3	683.8		2939.8		1161.0		3161.8	cps
Window 4	231.4		231.6		226.7		230.8	cps
Long Space	0.0		6702.0		1461.7		7595.9	cps
Short Space	1.2		1433.6		959.4		1568.6	cps
Rho			1.7100		2.5900		1.3800	g/cc
Pe					2.5700		1.5500	
Rib Angle	: 45.2		Rib Slope	: 1.008		Density/Spine Ratio		: 0.559
Spine Angle	: 75.2		Spine Slope	: 3.791		Spine Intercept		: -18.7

Caliper		
Low Ref	Readings	Reference
High Ref	3.1	8.0
	5.4	14.0
	Gain: 2.5	Offset: 1.4

Compensated Neutron Calibration Report

Serial Number:	5I
Tool Model:	G

CALIBRATION								
	Detector		Readings		Target		Normalization	
	Short Space		1.00	cps	1.00	cps	1.0000	
	Long Space		1.00	cps	1.00	cps	1.0000	

Gamma Ray Calibration Report

Serial Number: GR6  
Tool Model: OPEN  
Performed: Tue Nov 10 08:32:36 2009

Calibrator Value:	150.0	GAPI
Background Reading:	0.0	cps
Calibrator Reading:	276.0	cps
Sensitivity:	0.5535	GAPI/cps