



SUPERIOR
Hays,
Kansas

COMPENSATED
NEUTRON/DENSITY
PE LOG

Company	DIXON ENERGY, INC.	Location:	API # : 15-095-22209-0000	Other Services DIL/MEL SONIIC
Well	ROLF UNIT #1			Elevation
Field	BARKIN			K.B. 1796
County	KINGMAN			D.F. 1786
State	KANSAS			G.L. 1786
SEC 18 TWP 30S RGE 10W		330' FSL & 990' FWL		
Permanent Datum	GROUND LEVEL	Elevation	1786	
Log Measured From	KELLY BUSHING 10' A.G.L.			
Drilling Measured From	KELLY BUSHING			

Date	6-29-10
Run Number	TWO
Depth Driller	4875
Depth Logger	4876
Bottom Logged Interval	4874
Top Log Interval	3400
Casing Driller	8 5/8" @ 311
Casing Logger	308
Bit Size	7 7/8
Type Fluid in Hole	CHEMICAL MUD
Density / Viscosity	9.4/54
pH / Fluid Loss	9.5/9.6
Source of Sample	FLOWLINE
Rim @ Meas. Temp	.58 @ 100F
Rmf @ Meas. Temp	.43 @ 100F
Rmc @ Meas. Temp	.69 @ 100F
Source of Rmf / Rmc	MEASURED
Rim @ BHT	.47 @ 123F
Time Circulation Stopped	2 HOURS
Time Logger on Bottom	
Maximum Recorded Temperature	123F
Equipment Number	680
Location	HAYS, KS.
Recorded By	JASON CAPPELLUCCI
Witnessed By	RYAN DIXON

<<< Fold Here >>>

All interpretations are opinions based on inferences from electrical or other measurements and we cannot and do not guarantee the accuracy or correctness of any interpretation, and we shall not, except in the case of gross or willful negligence on our part, be liable or responsible for any loss, costs, damages, or expenses incurred or sustained by anyone resulting from any interpretation made by any of our officers, agents or employees. These interpretations are also subject to our general terms and conditions set out in our current Price Schedule.

Comments

THANK YOU FOR USING SUPERIOR WELL SERVICE (785) 628-6395
 DIRECTIONS
 NASHVILLE KS. - 1 S. - 1 1/2 W. - N. INTO

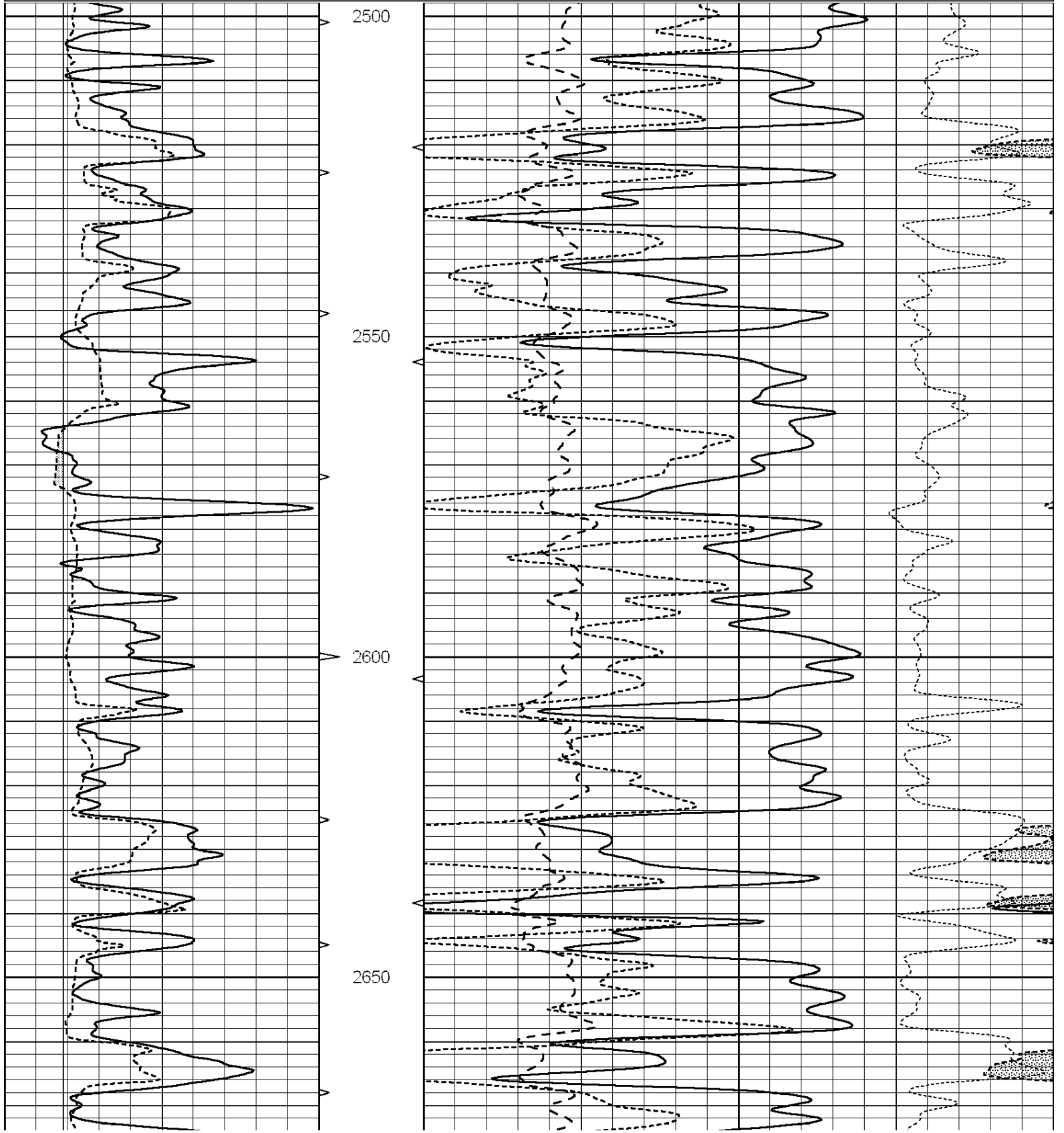


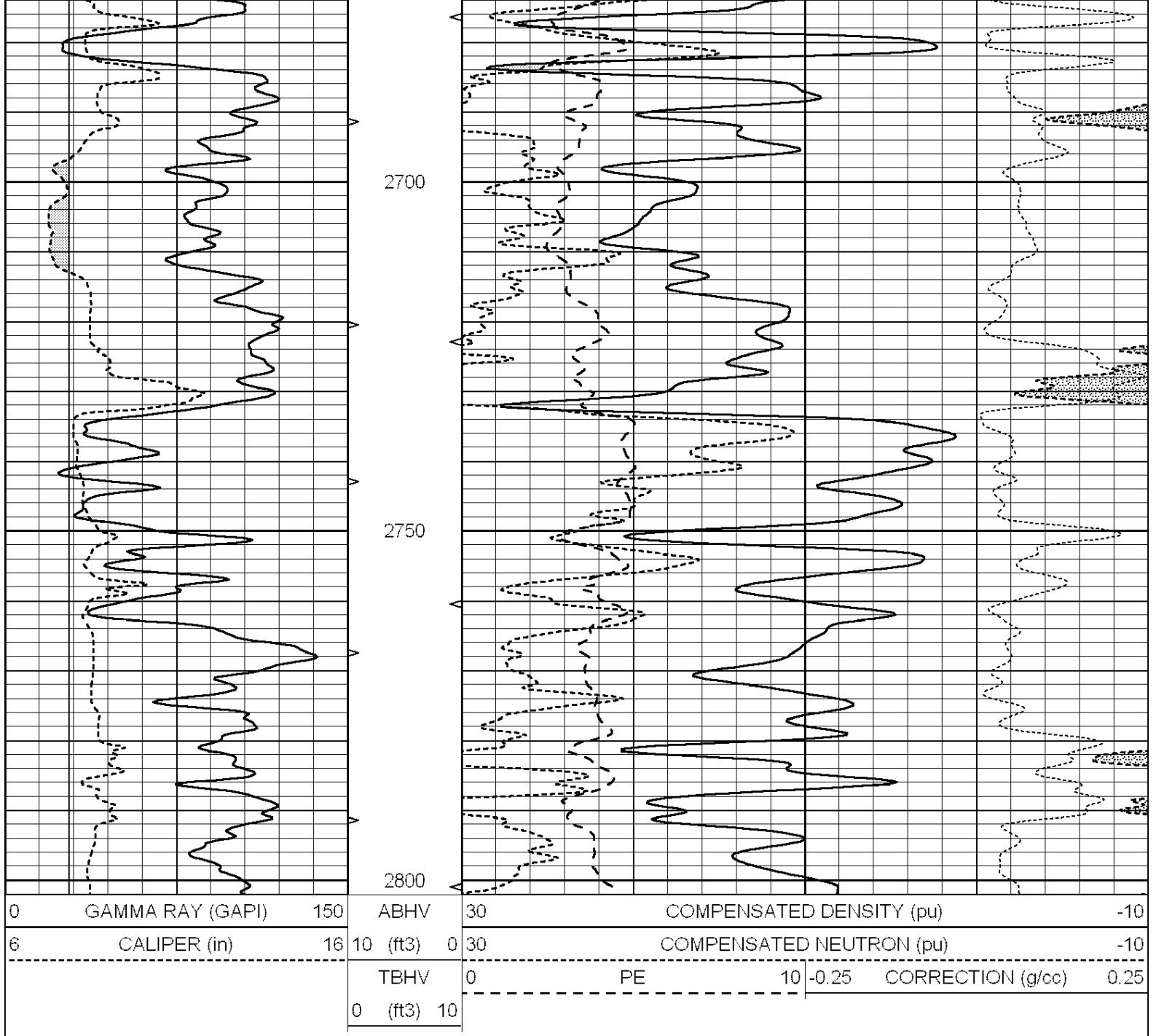
SUPERIOR
Hays,
Kansas

MAIN SECTION

Database File: 005402pe.db
 Dataset Pathname: pass8.1
 Presentation Format: _ldt_neu
 Dataset Creation: Tue Jun 29 14:33:42 2010 by Calc Open-Cased 090629
 Charted by: Depth in Feet scaled 1:240

0	GAMMA RAY (GAPI)	150	ABHV	30	COMPENSATED DENSITY (pu)		-10		
6	CALIPER (in)	16	10 (ft3)	0	30	COMPENSATED NEUTRON (pu)		-10	
			TBHV	0	PE	10	-0.25	CORRECTION (g/cc)	0.25
			0 (ft3)	10					



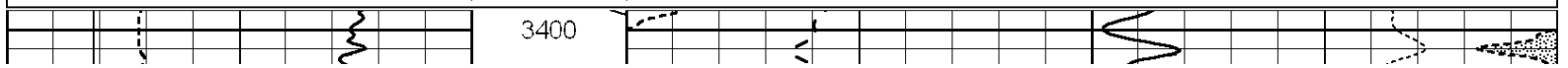


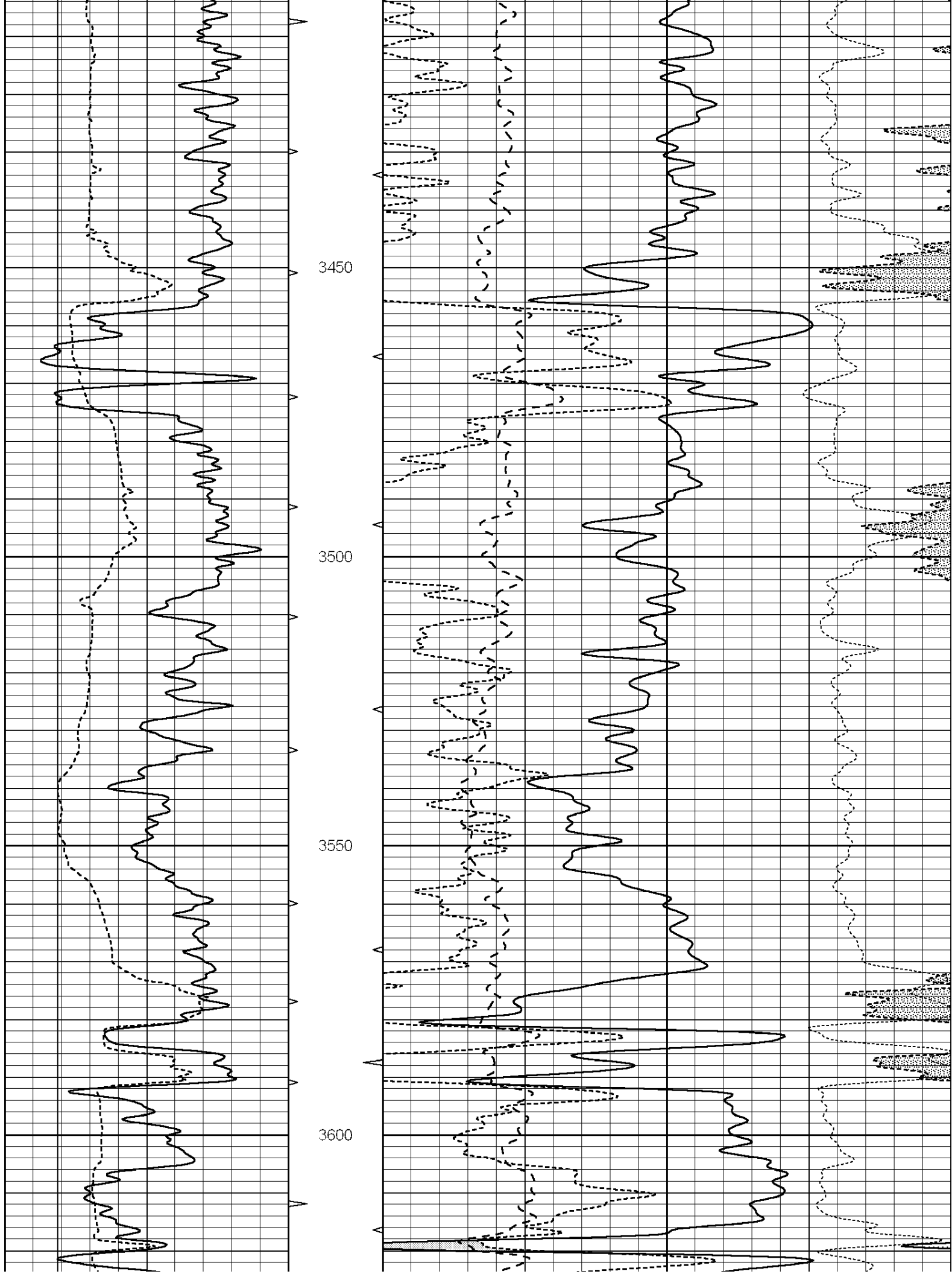
SUPERIOR
Hays,
Kansas

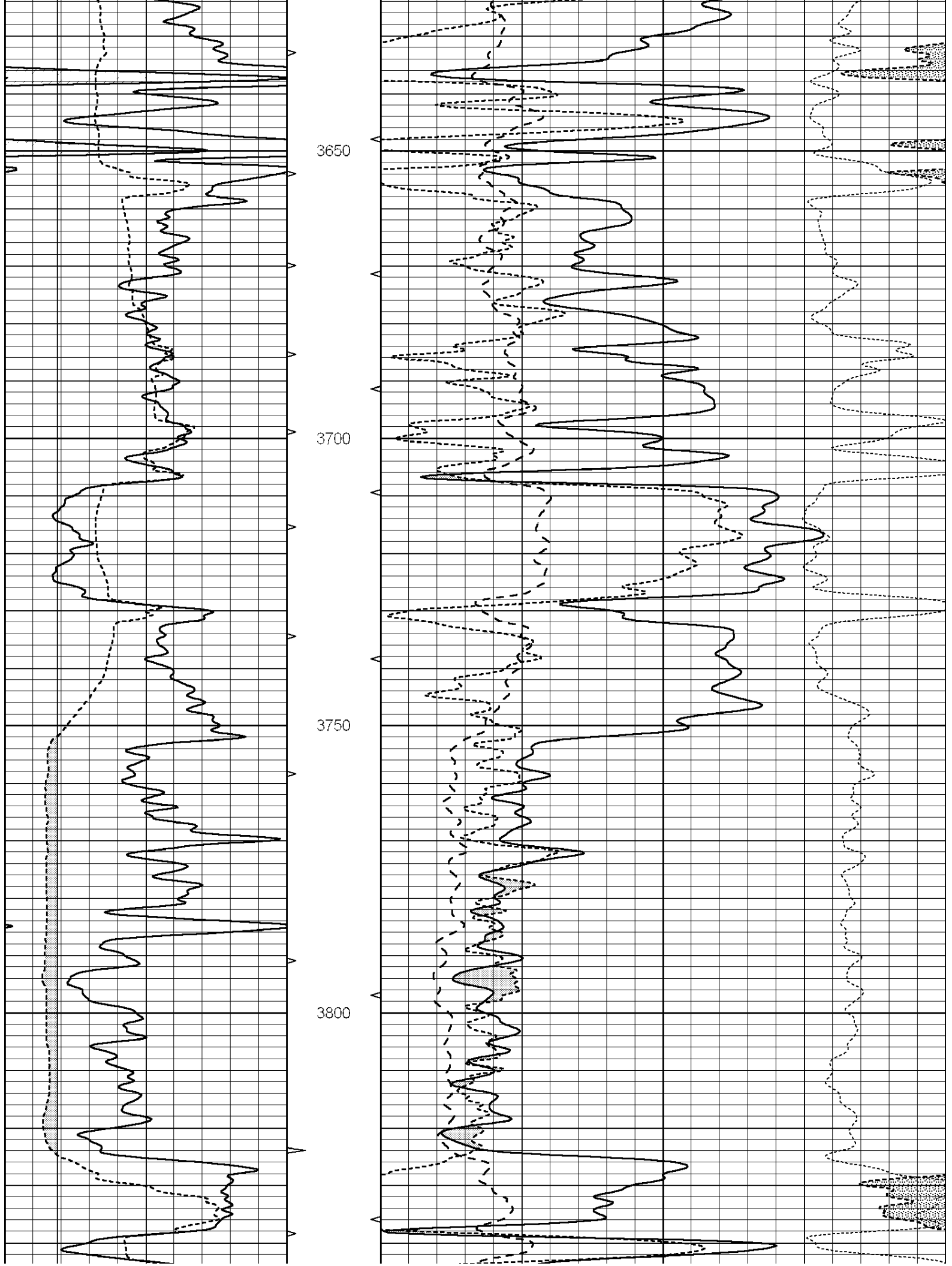
MAIN SECTION

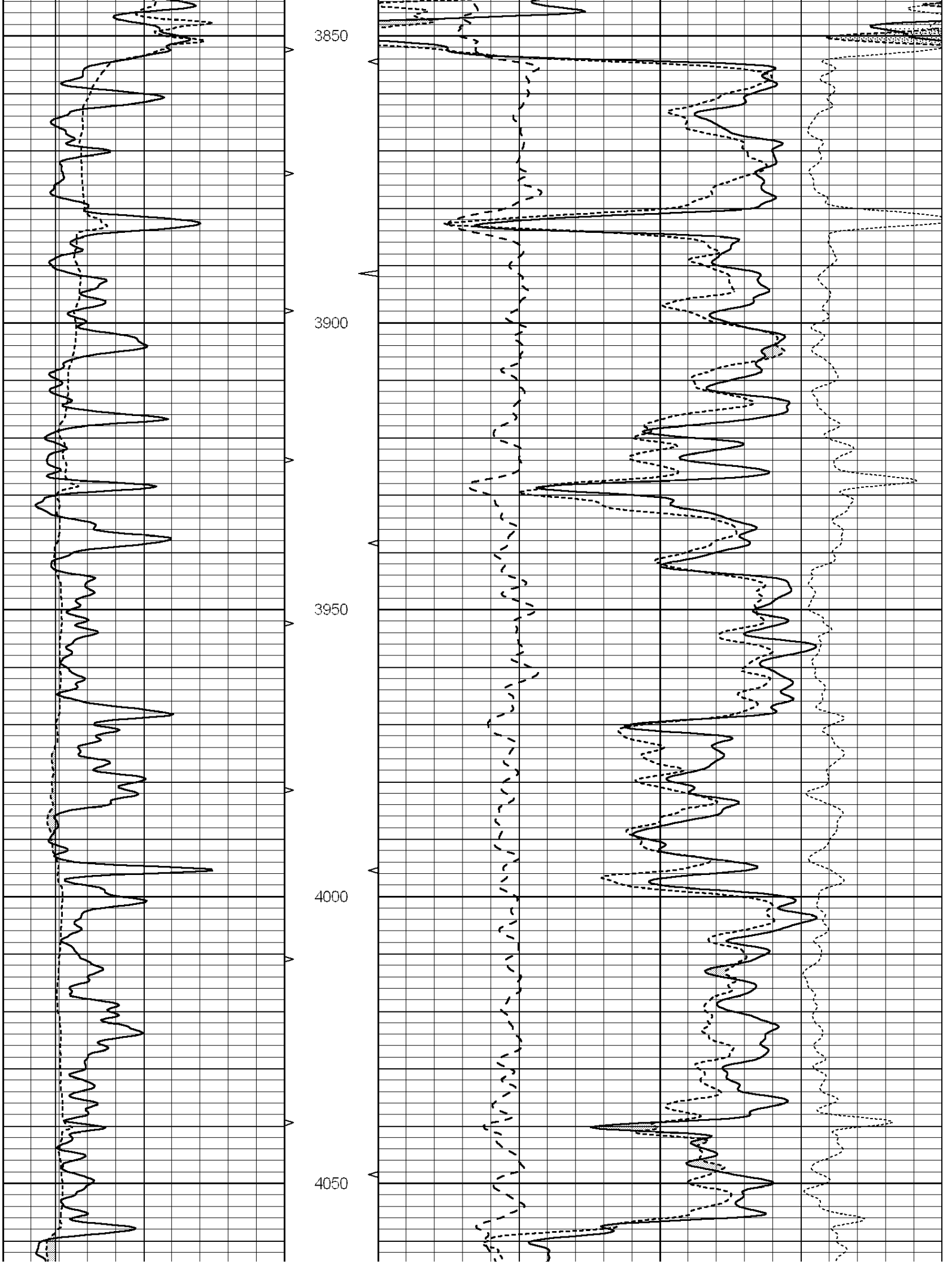
Database File: 005402pe.db
 Dataset Pathname: pass6.1
 Presentation Format: _ldt_neu
 Dataset Creation: Tue Jun 29 14:23:20 2010 by Calc Open-Cased 090629
 Charted by: Depth in Feet scaled 1:240

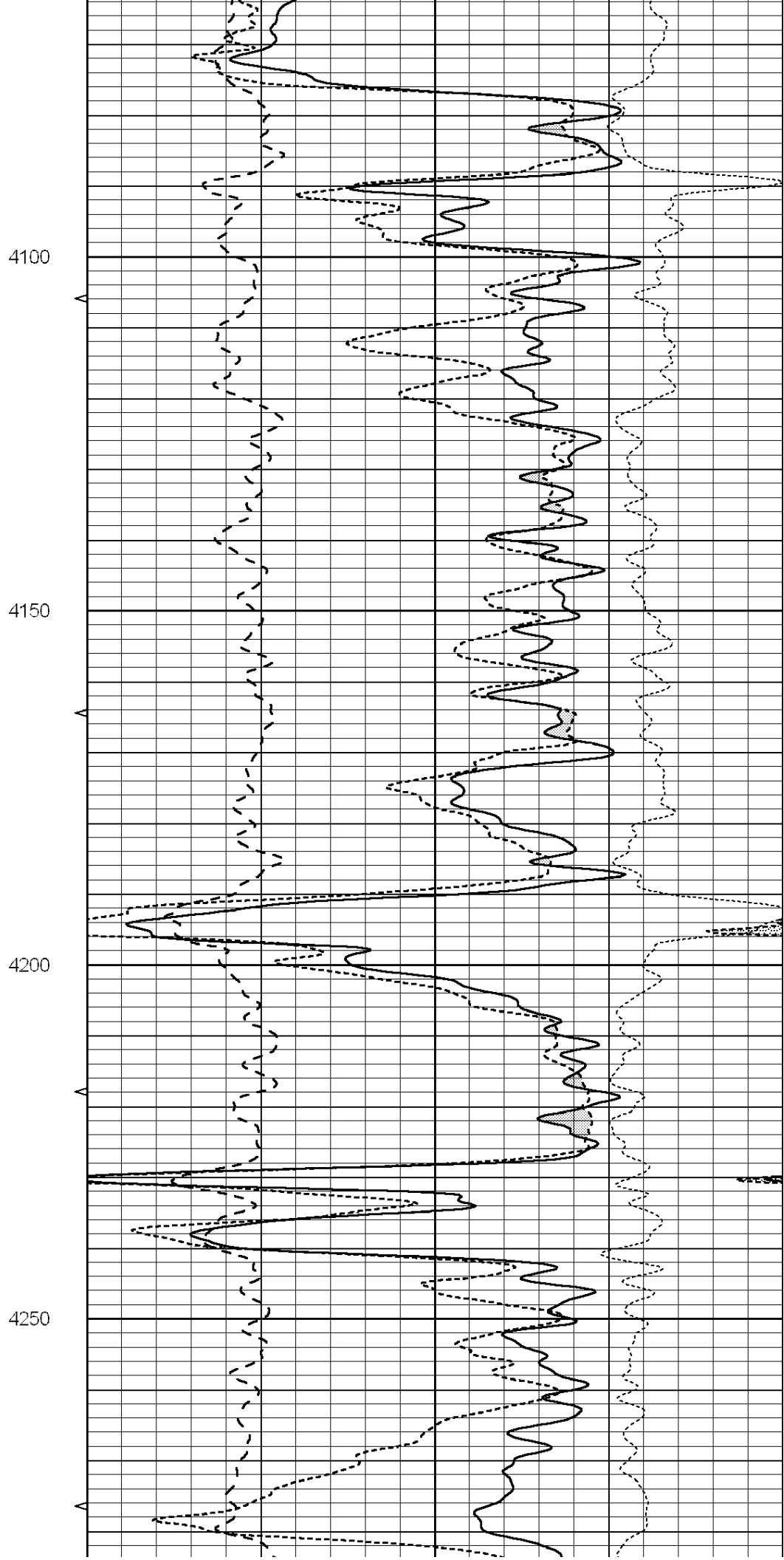
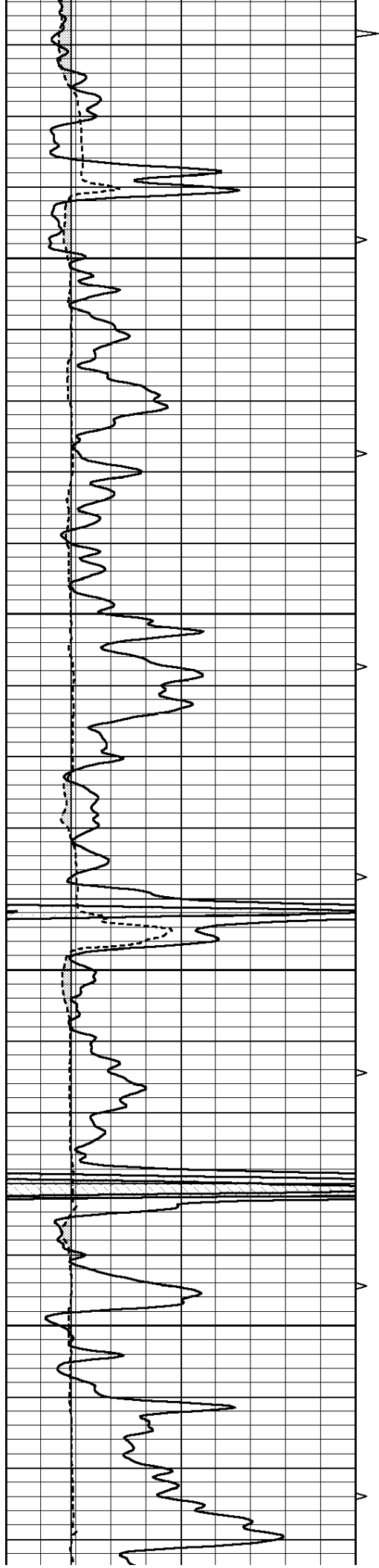
0	GAMMA RAY (GAPI)	150	ABHV	30	COMPENSATED DENSITY (pu)	-10
6	CALIPER (in)	16	10 (ft3)	0 30	COMPENSATED NEUTRON (pu)	-10
			TBHV	0	PE	10 -0.25
			0 (ft3)	10		CORRECTION (g/cc) 0.25

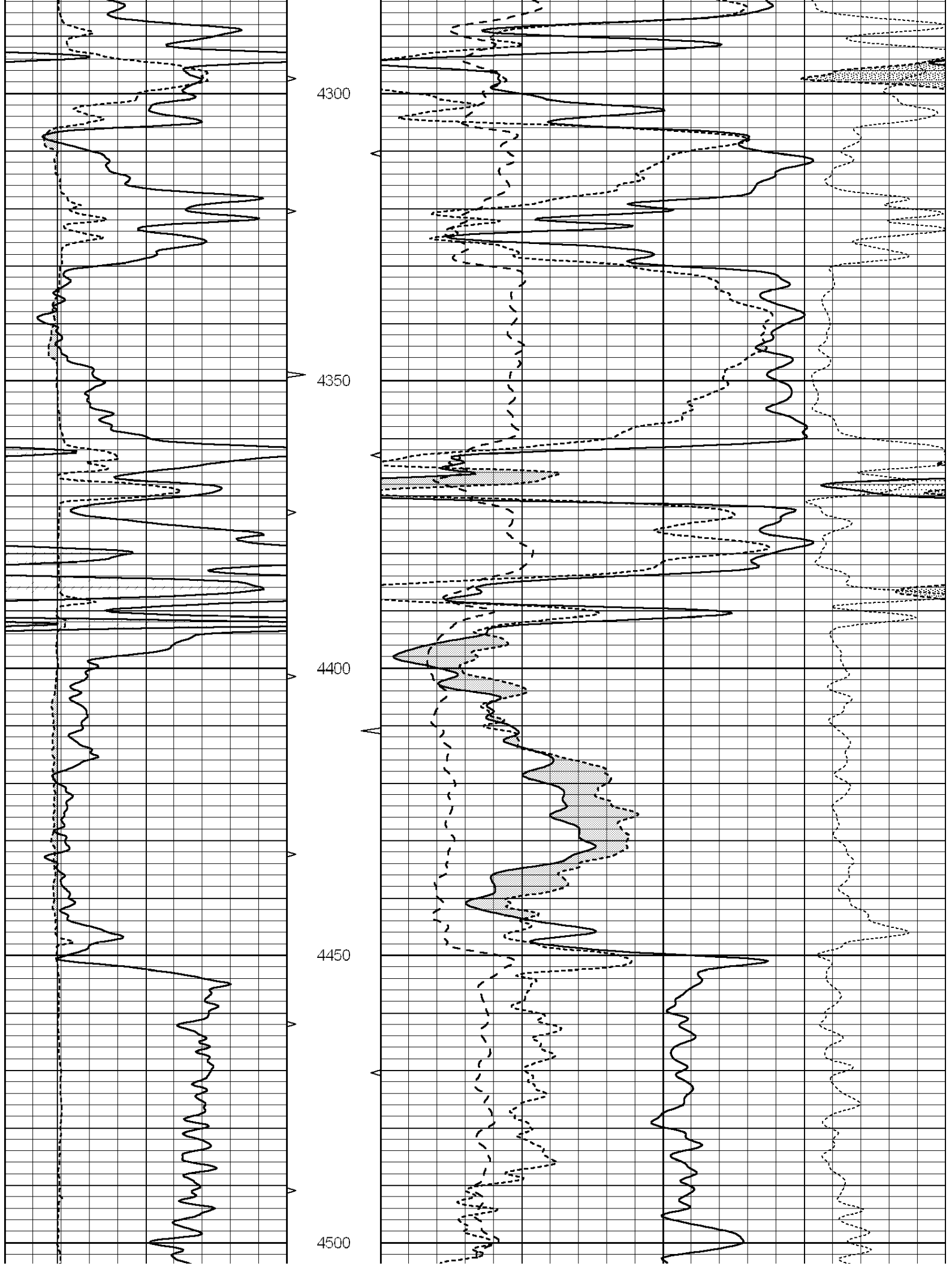


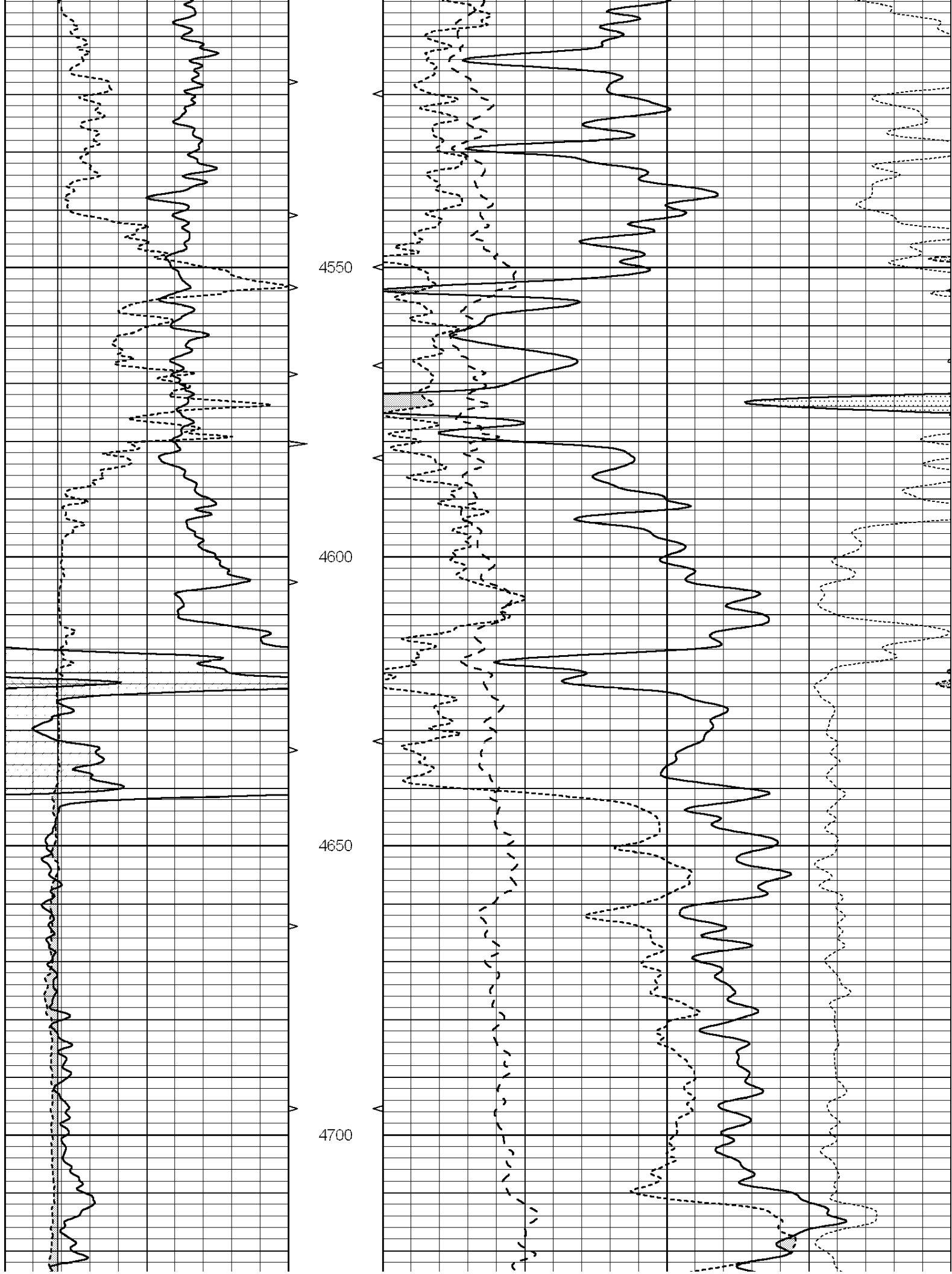


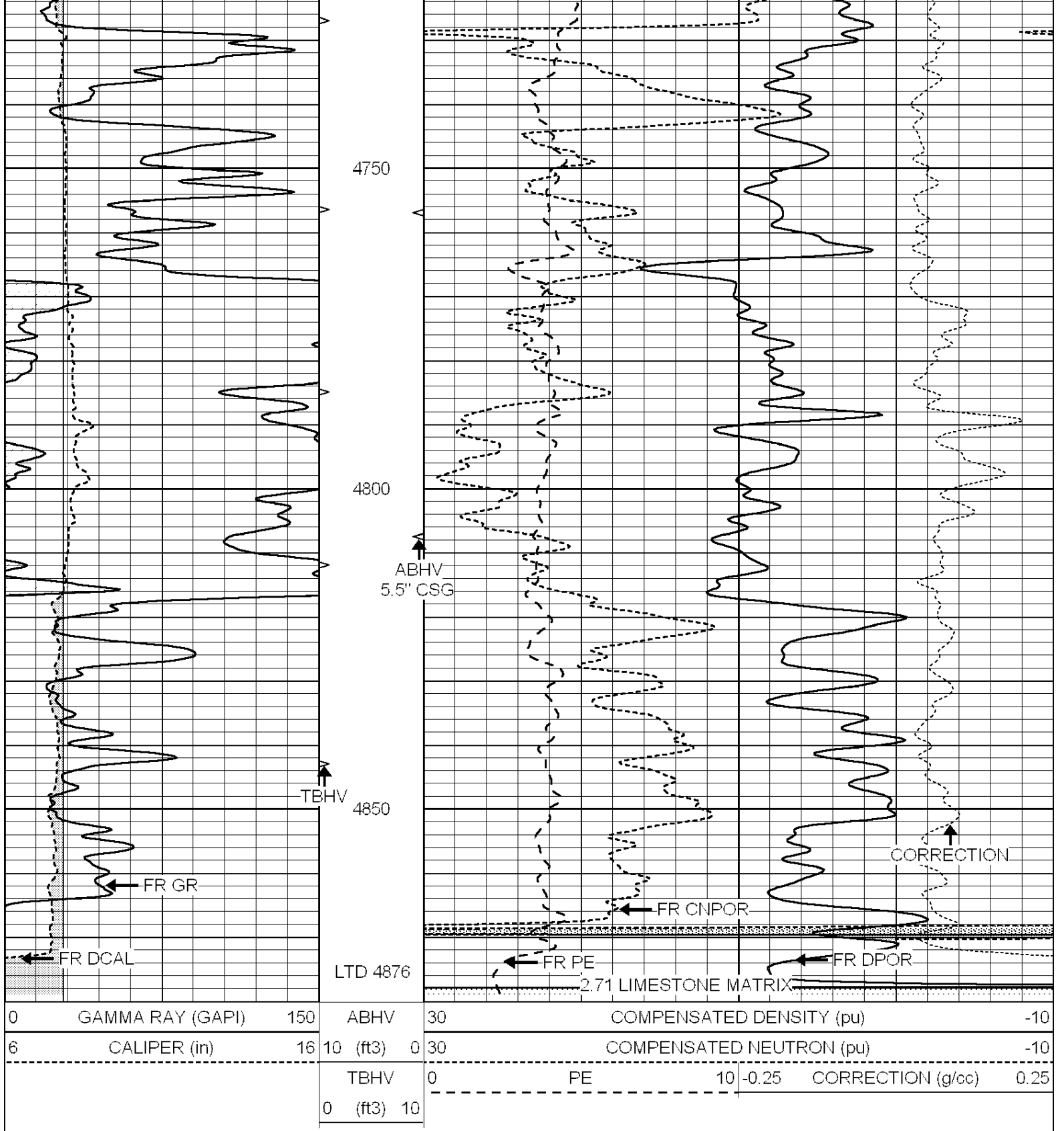










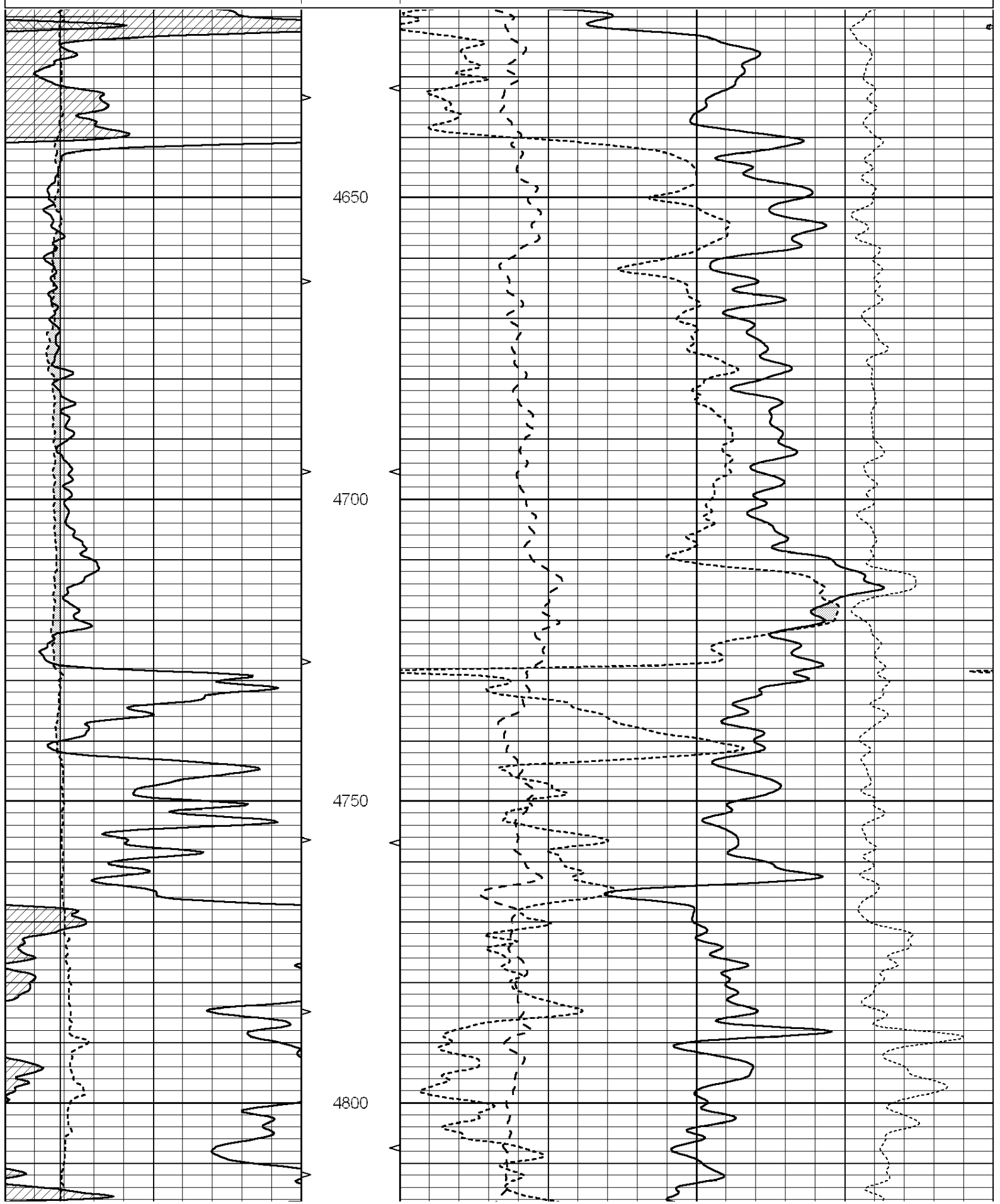


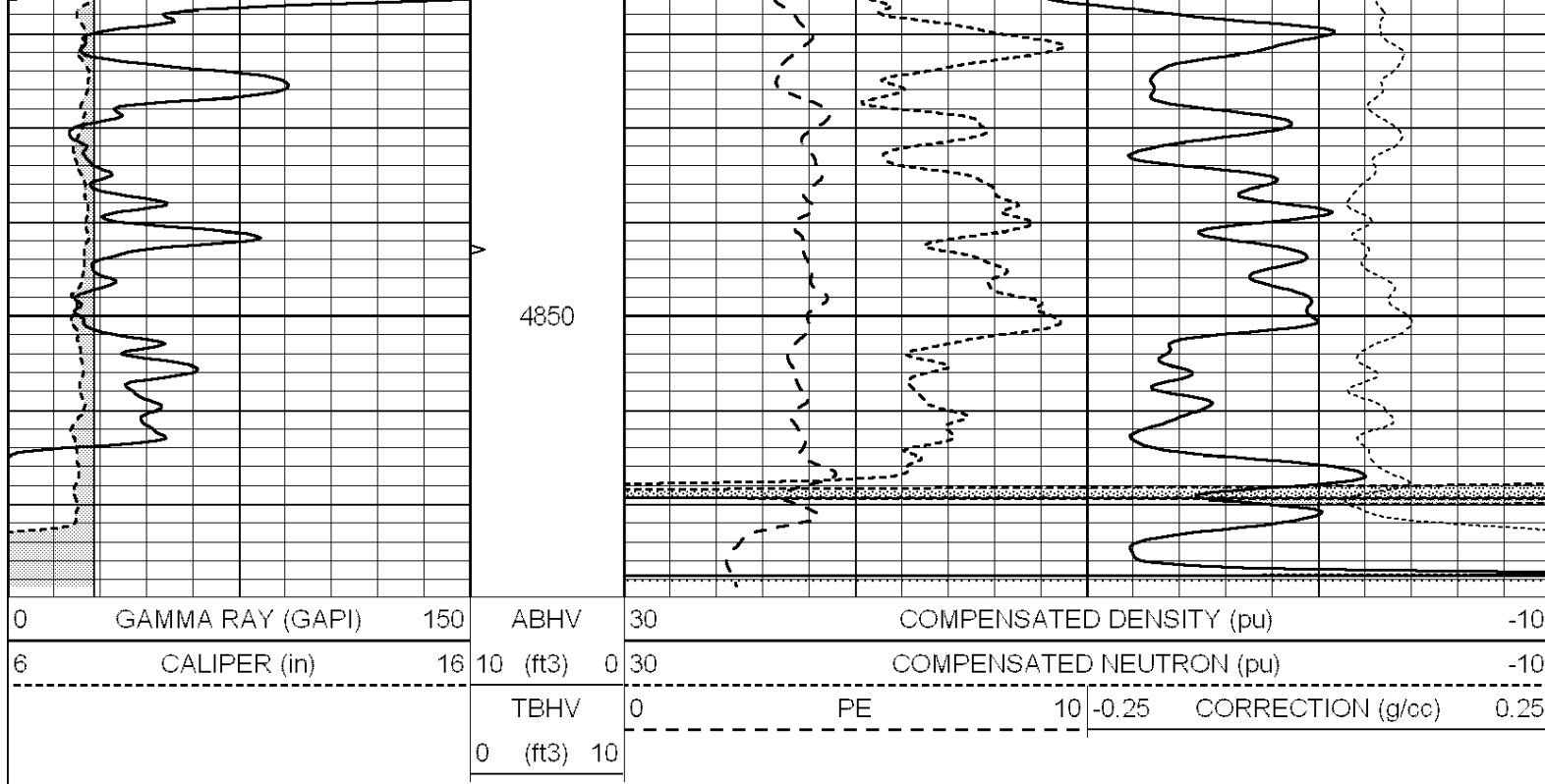
SUPERIOR
Hays,
Kansas

REPEAT SECTION

Database File: 005402pe.db
 Dataset Pathname: pass5.1
 Presentation Format: _ldt_neu
 Dataset Creation: Tue Jun 29 14:35:08 2010 by Calc Open-Cased 090629
 Charted by: Depth in Feet scaled 1:240

0	GAMMA RAY (GAPI)	150	ABHV	30	COMPENSATED DENSITY (pu)	-10
6	CALIPER (in)	16	10 (ft3)	0	COMPENSATED NEUTRON (pu)	-10
			TBHV	0	PE	10
			0 (ft3)	10	-0.25	CORRECTION (g/cc)
					0.25	





Calibration Report

Database File: 005402pe.db
 Dataset Pathname: pass5.1
 Dataset Creation: Tue Jun 29 14:35:08 2010 by Calc Open-Cased 090629

Litho Density Calibration Report
 Serial: 001 Model: PRB
 Performed Thu Sep 17 09:57:21 2009

Litho Density Calibration

	Background	Magnesium	Aluminum	Sandstone	
Window 1	2056.0	9796.8	3673.1	10821.3	cps
Window 2	1920.0	8541.1	3303.5	9307.2	cps
Window 3	1563.1	4735.7	2212.8	5017.5	cps
Window 4	466.0	466.1	465.6	471.5	cps
Long Space	0.0	6621.1	1383.5	7387.2	cps
Short Space	2.5	2361.7	1523.2	2534.0	cps
Rho		1.7100	2.5900	1.3800	g/cc
Pe			2.5700	1.5500	
Rib Angle	: 44.4	Rib Slope	: 0.978	Density/Spine Ratio	: 0.541
Spine Angle	: 74.4	Spine Slope	: 3.570	Spine Intercept	: -18.9

Caliper

	Readings	Reference	
Low Ref	3.1	8.4	
High Ref	4.3	14.3	
Gain: 4.6			Offset: -7.9

Compensated Neutron Calibration Report

Serial Number: 5I
 Tool Model: G

CALIBRATION

Detector	Readings	Target	Normalization
----------	----------	--------	---------------

Short Space	1.00	cps	1.00	cps	1.0000
Long Space	1.00	cps	1.00	cps	1.0000

Gamma Ray Calibration Report

Serial Number:	GR6	
Tool Model:	OPEN	
Performed:	Tue Nov 10 08:32:36 2009	
Calibrator Value:	150.0	GAPI
Background Reading:	0.0	cps
Calibrator Reading:	276.0	cps
Sensitivity:	0.5535	GAPI/cps