



SUPERIOR
Hays,
Kansas

SONIC
LOG

Company	DIXON ENERGY, INC.	Location:	API # : 15-095-22209-0000	Other Services CDL/CNL/PE DIL/MEL
Well	ROLF UNIT #1	SEC 18 TWP 30S RGE 10W		Elevation
Field	BARKIN	330' FSL & 990' FWL		K.B. 1796
County	KINGMAN			D.F. 1786
State	KANSAS			G.L. 1786

Date	6-29-10
Run Number	THREE
Depth Driller	4875
Depth Logger	4876
Bottom Logged Interval	4866
Top Log Interval	290
Casing Driller	8 5/8" @ 311
Casing Logger	308
Bit Size	7 7/8
Type Fluid in Hole	CHEMICAL MUD
Density / Viscosity	9.4/54
pH / Fluid Loss	9.5/9.6
Source of Sample	FLOWLINE
Rim @ Meas. Temp	.58 @ 100F
Rmf @ Meas. Temp	.43 @ 100F
Rmc @ Meas. Temp	.69 @ 100F
Source of Rmf / Rmc	MEASURED
Rim @ BHT	.47 @ 123F
Time Circulation Stopped	2 HOURS
Time Logger on Bottom	
Maximum Recorded Temperature	123F
Equipment Number	680
Location	HAYS, KS.
Recorded By	JASON CAPPELLUCCI
Witnessed By	RYAN DIXON

<<< Fold Here >>>

All interpretations are opinions based on inferences from electrical or other measurements and we cannot and do not guarantee the accuracy or correctness of any interpretation, and we shall not, except in the case of gross or willful negligence on our part, be liable or responsible for any loss, costs, damages, or expenses incurred or sustained by anyone resulting from any interpretation made by any of our officers, agents or employees. These interpretations are also subject to our general terms and conditions set out in our current Price Schedule.

Comments

THANK YOU FOR USING SUPERIOR WELL SERVICE (785) 628-6395
DIRECTIONS
NASHVILLE KS. - 1 S. - 1 1/2 W. - N. INTO

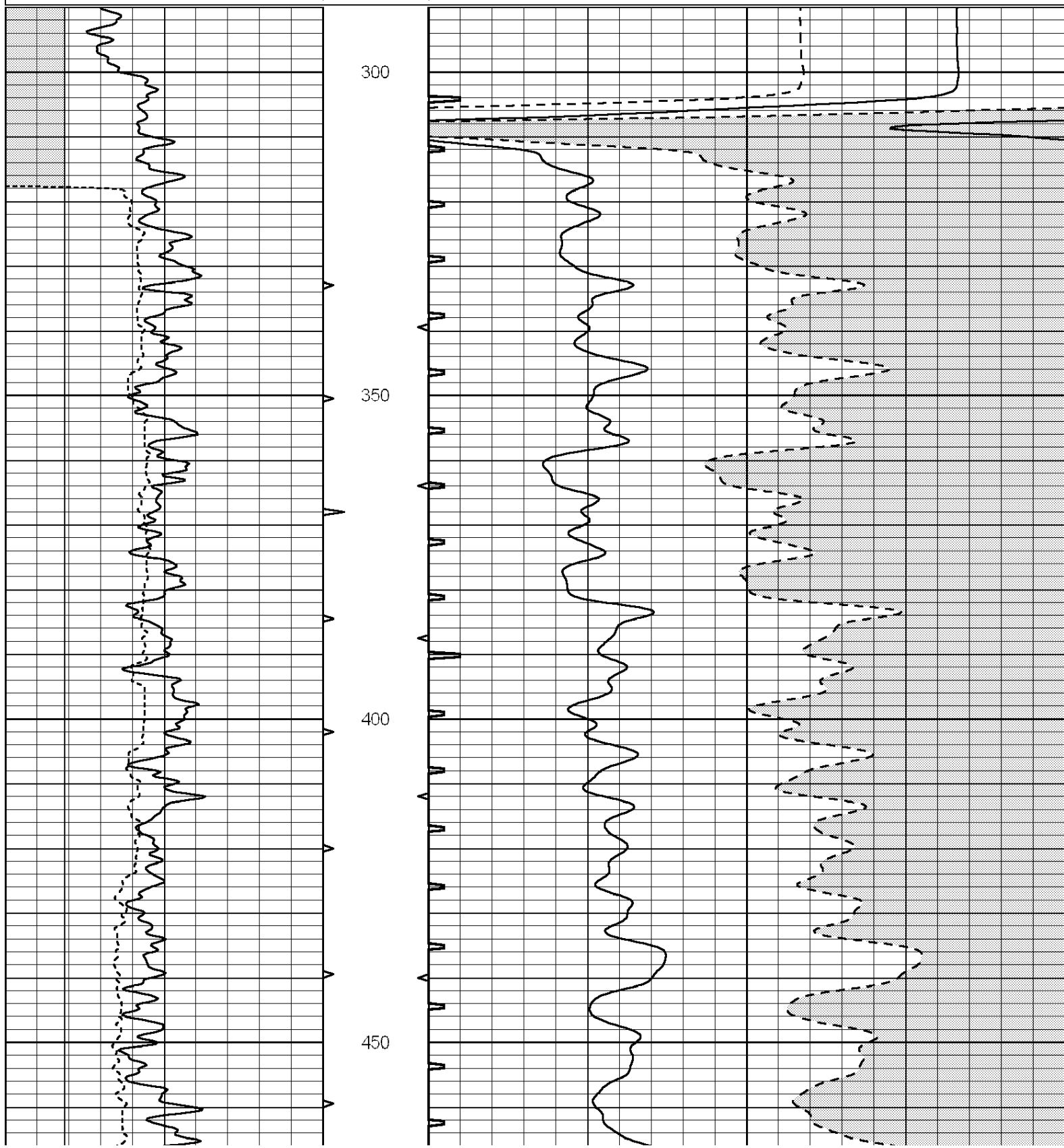


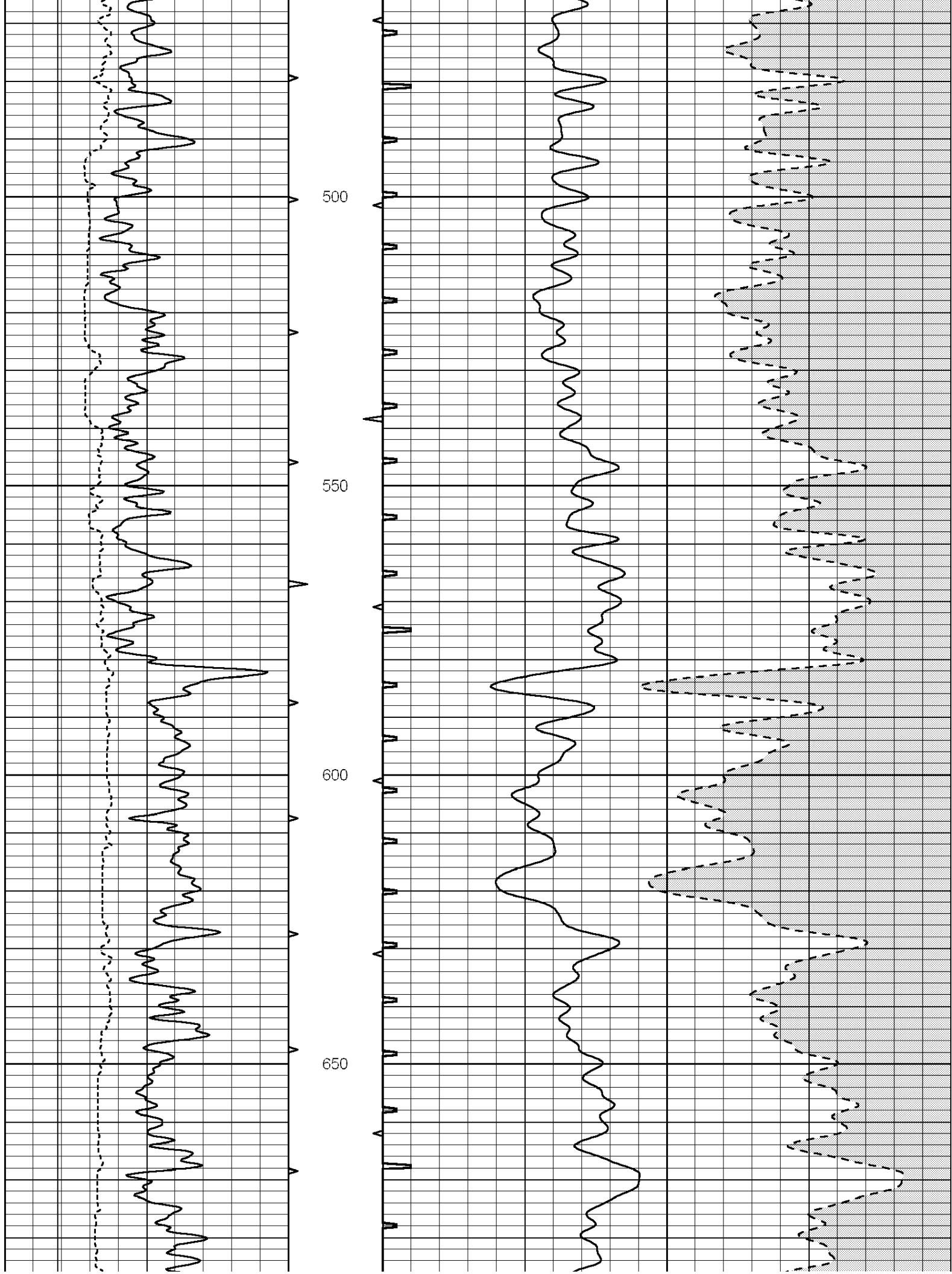
SUPERIOR
Hays,
Kansas

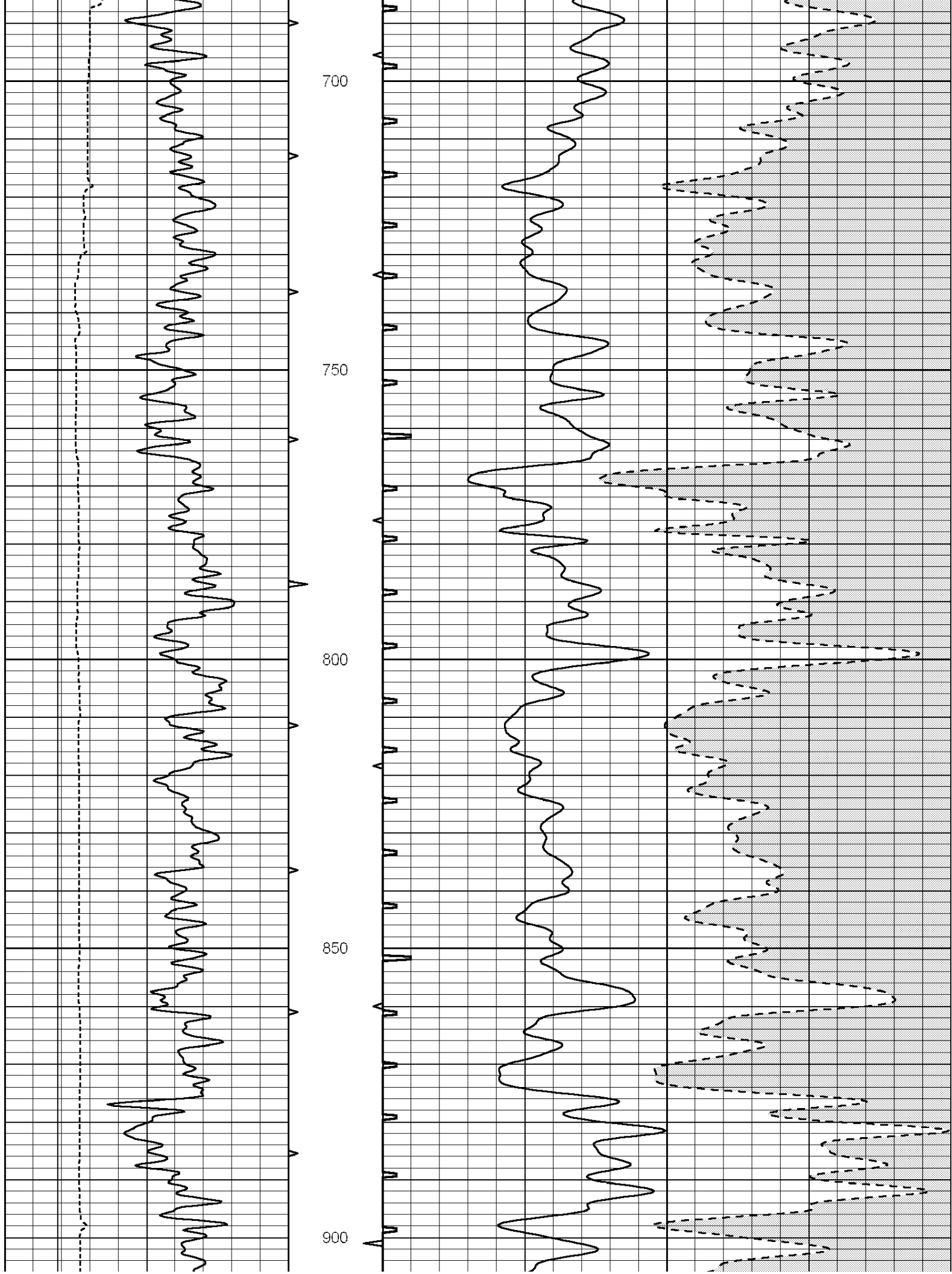
MAIN SECTION

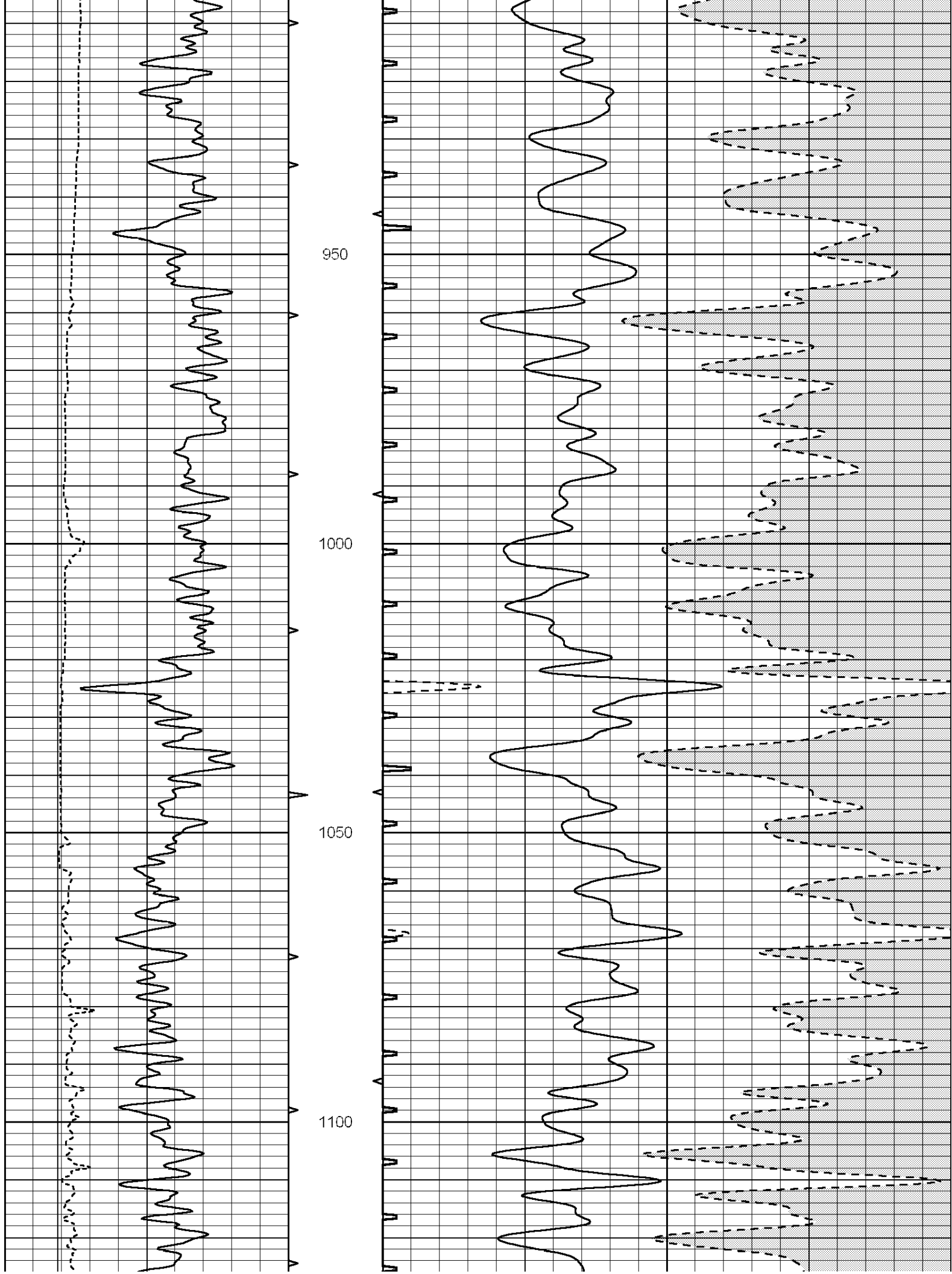
Database File: 005402pe.db
 Dataset Pathname: pass11.2
 Presentation Format: _slt
 Dataset Creation: Tue Jun 29 17:27:59 2010 by Calc Open-Cased 090629
 Charted by: Depth in Feet scaled 1:240

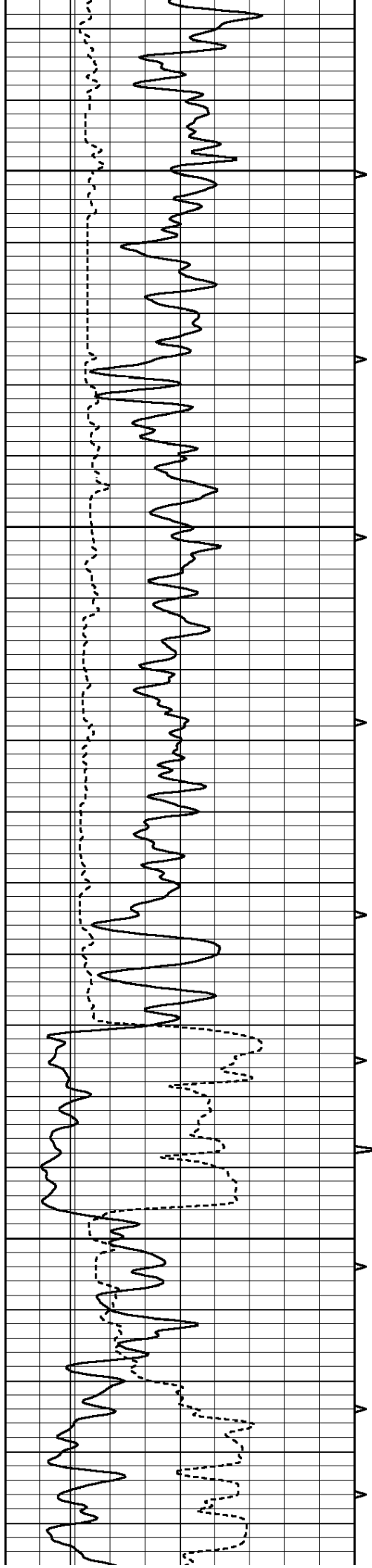
0	GAMMA RAY (GAPI)	150	ABHV	140	DELTA TIME (usec/ft)	40	
6	CALIPER (in)	16	10 (ft3)	0	30	SONIC POROSITY (pu)	-10
			TBHV	0	ITT (msec)	20	
			0 (ft3)	10			









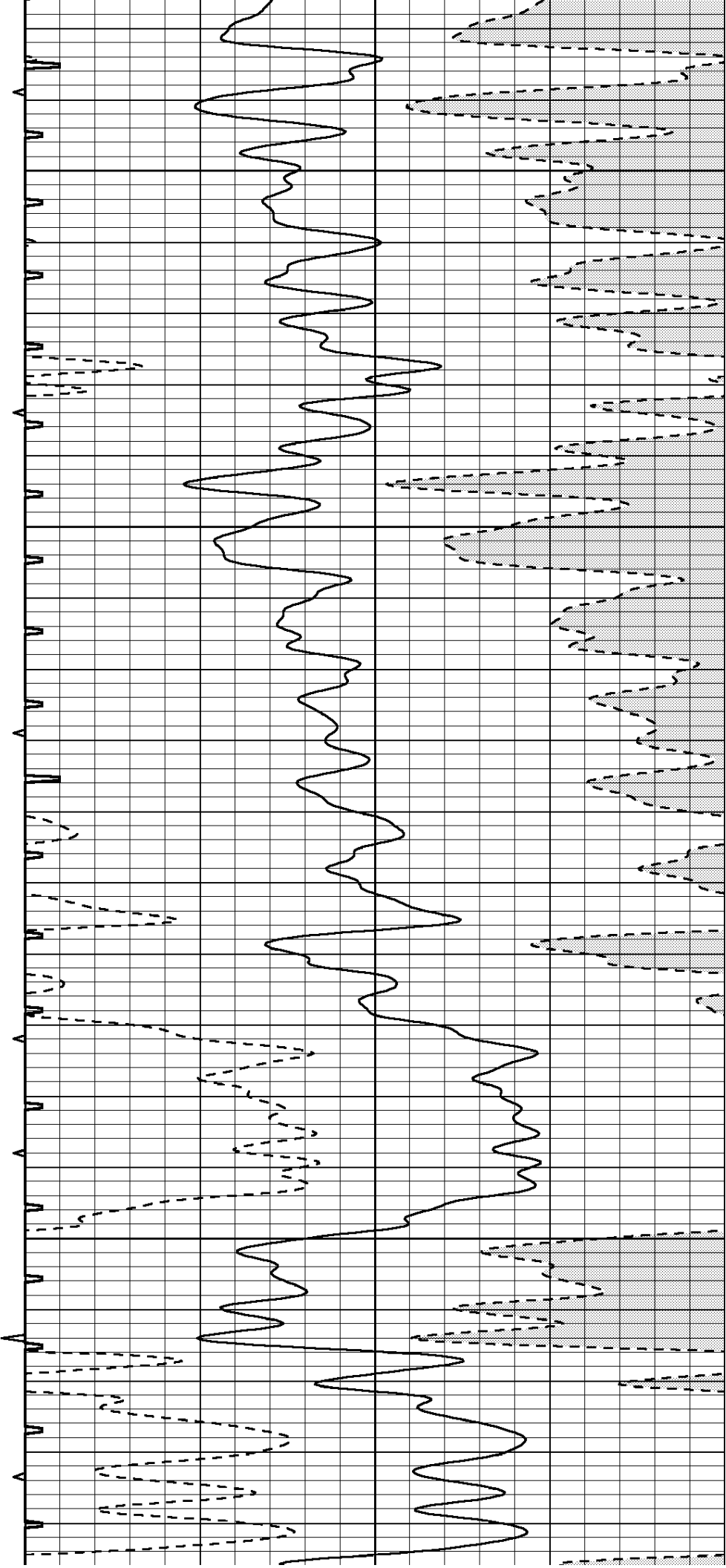


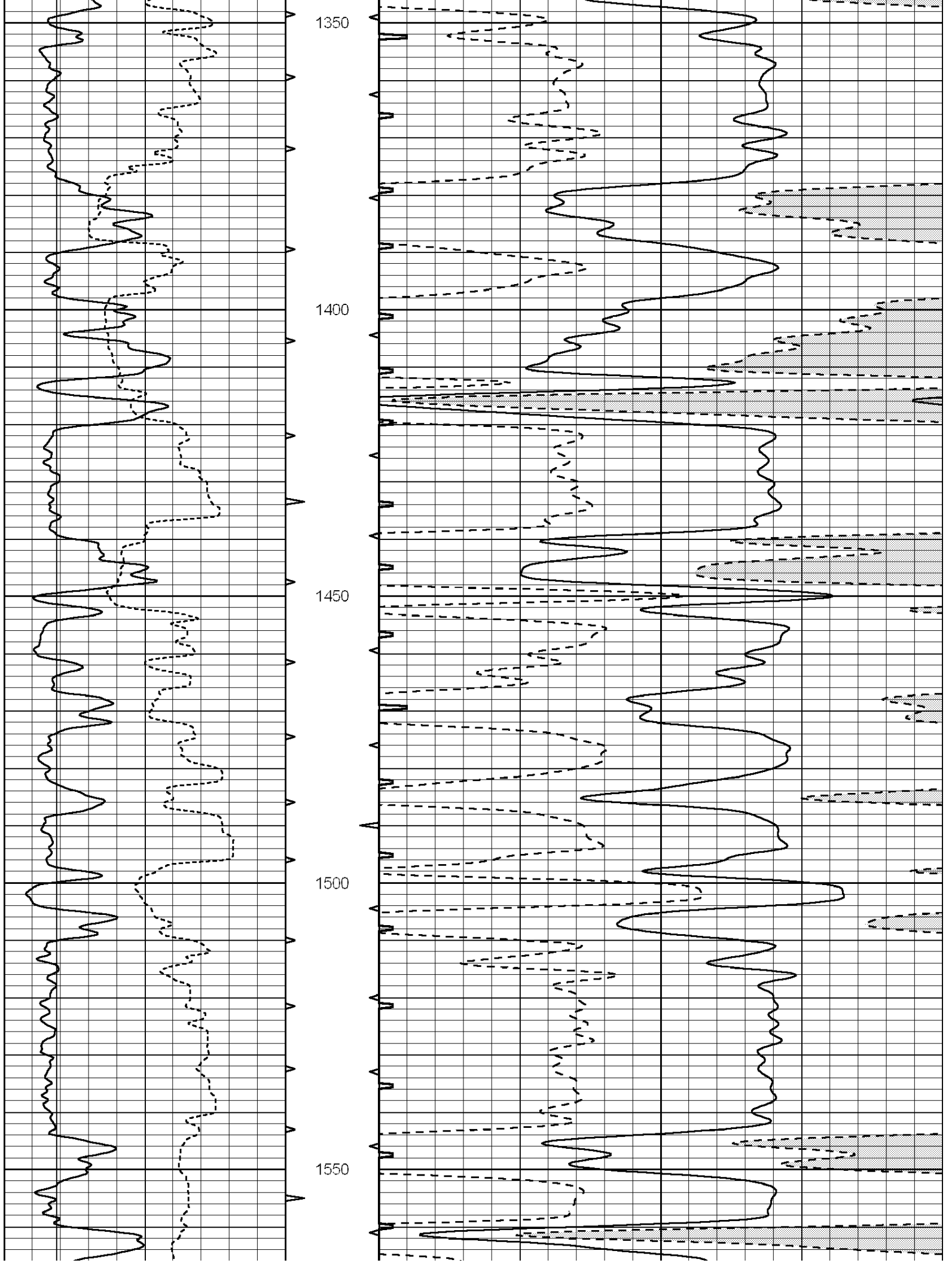
1150

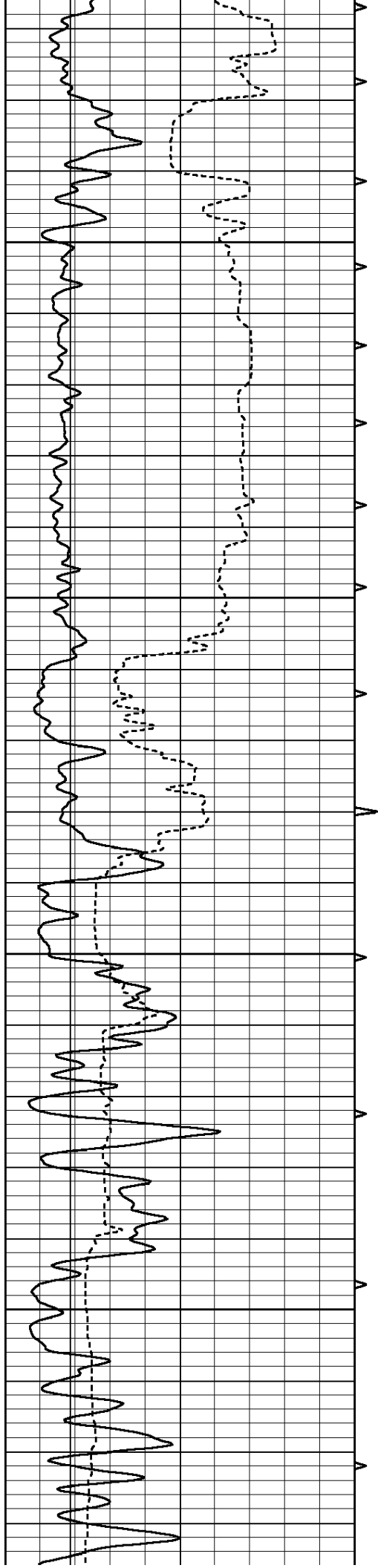
1200

1250

1300





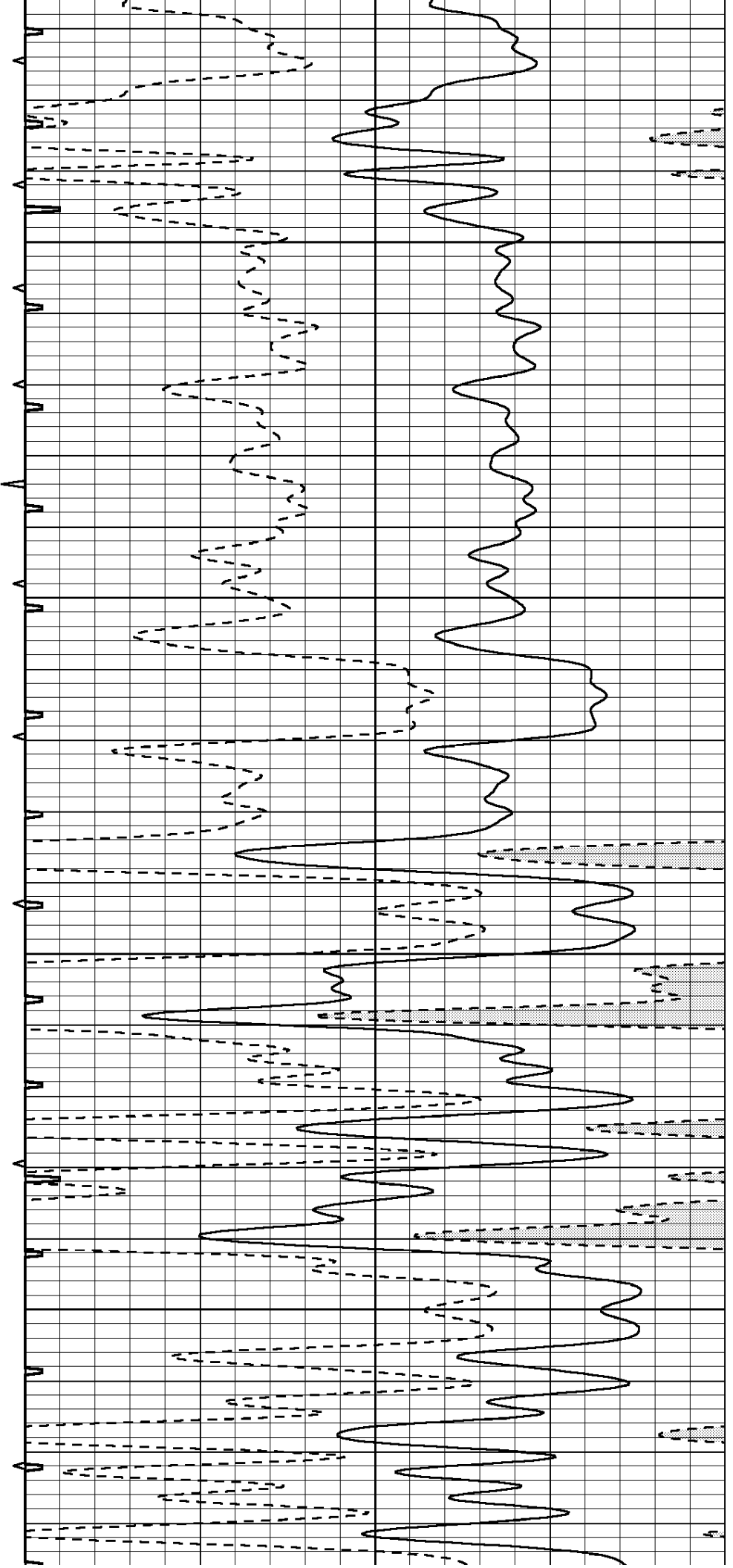


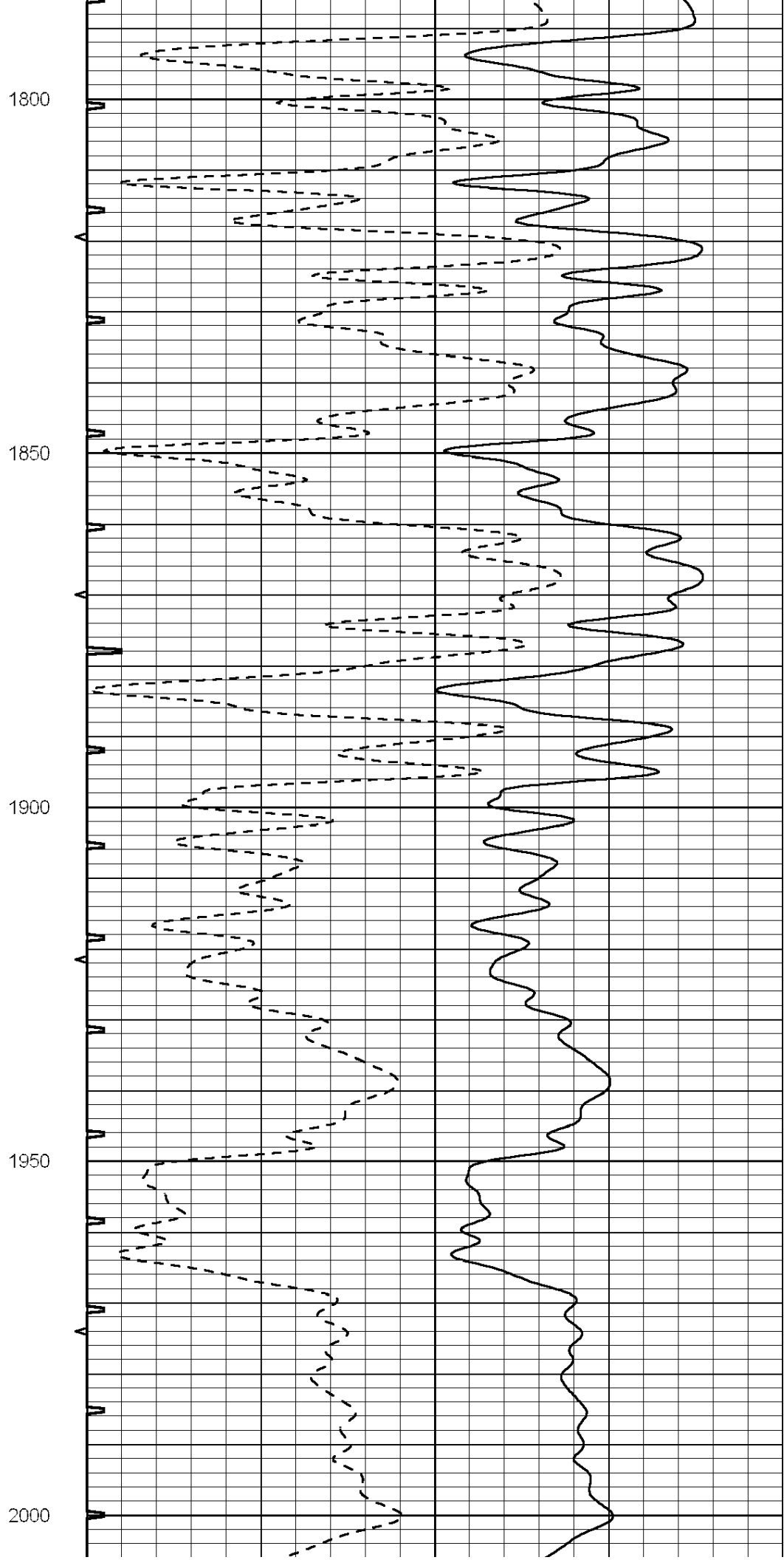
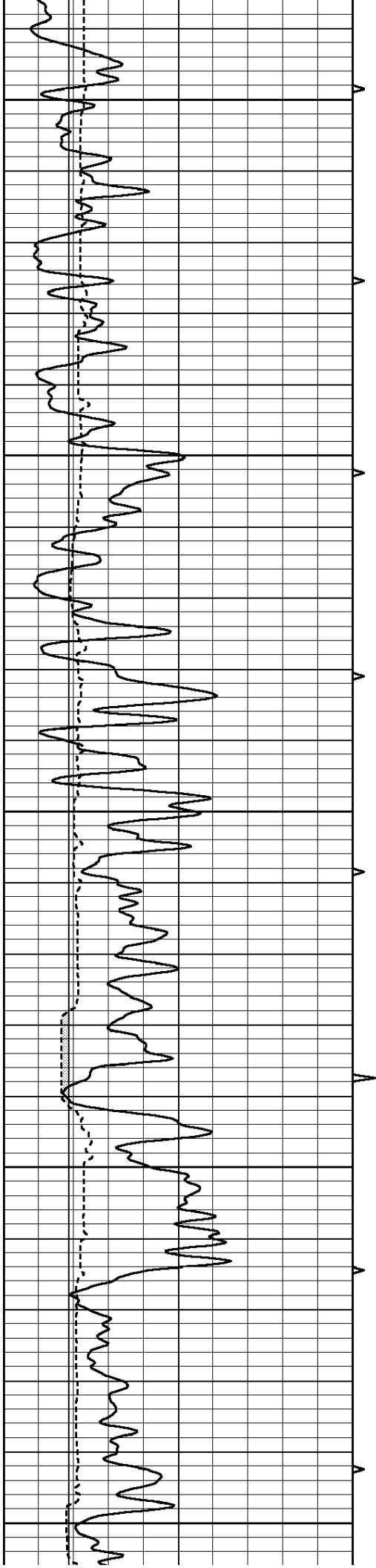
1600

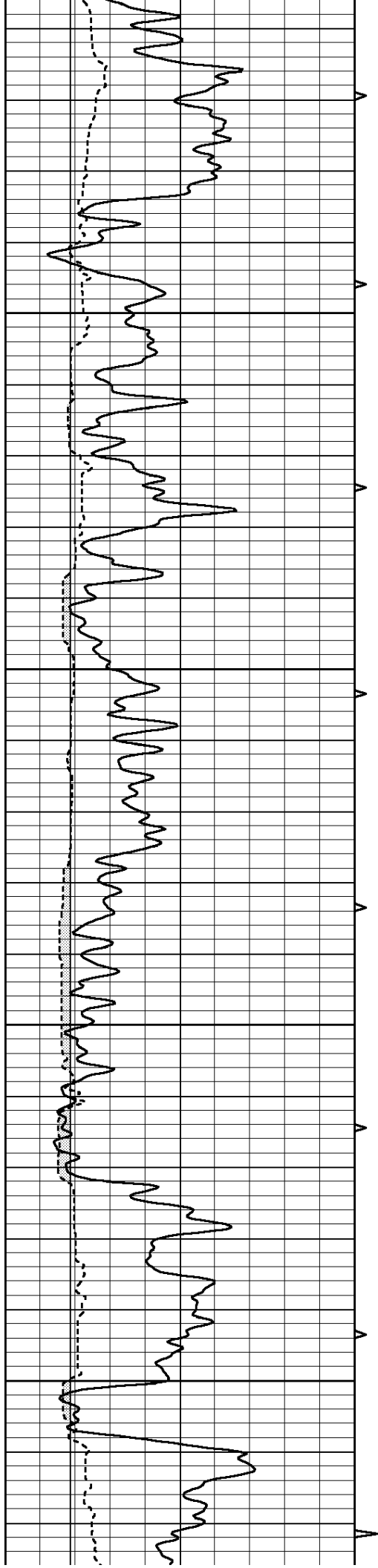
1650

1700

1750





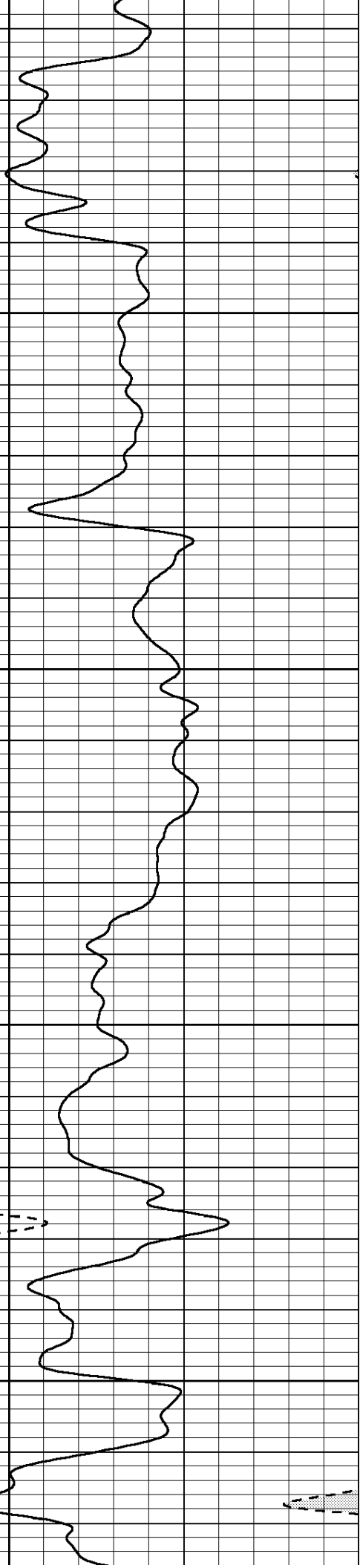
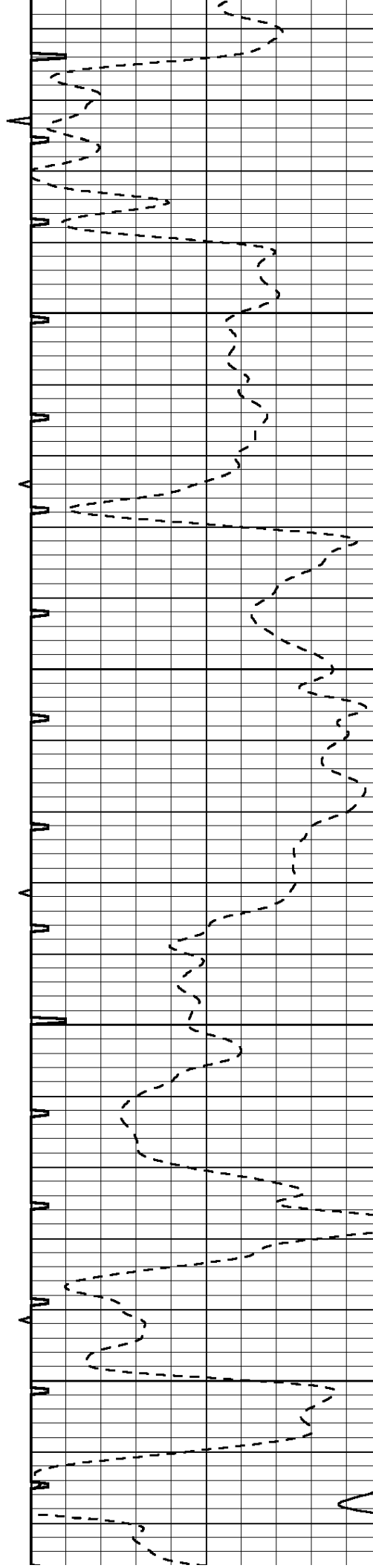


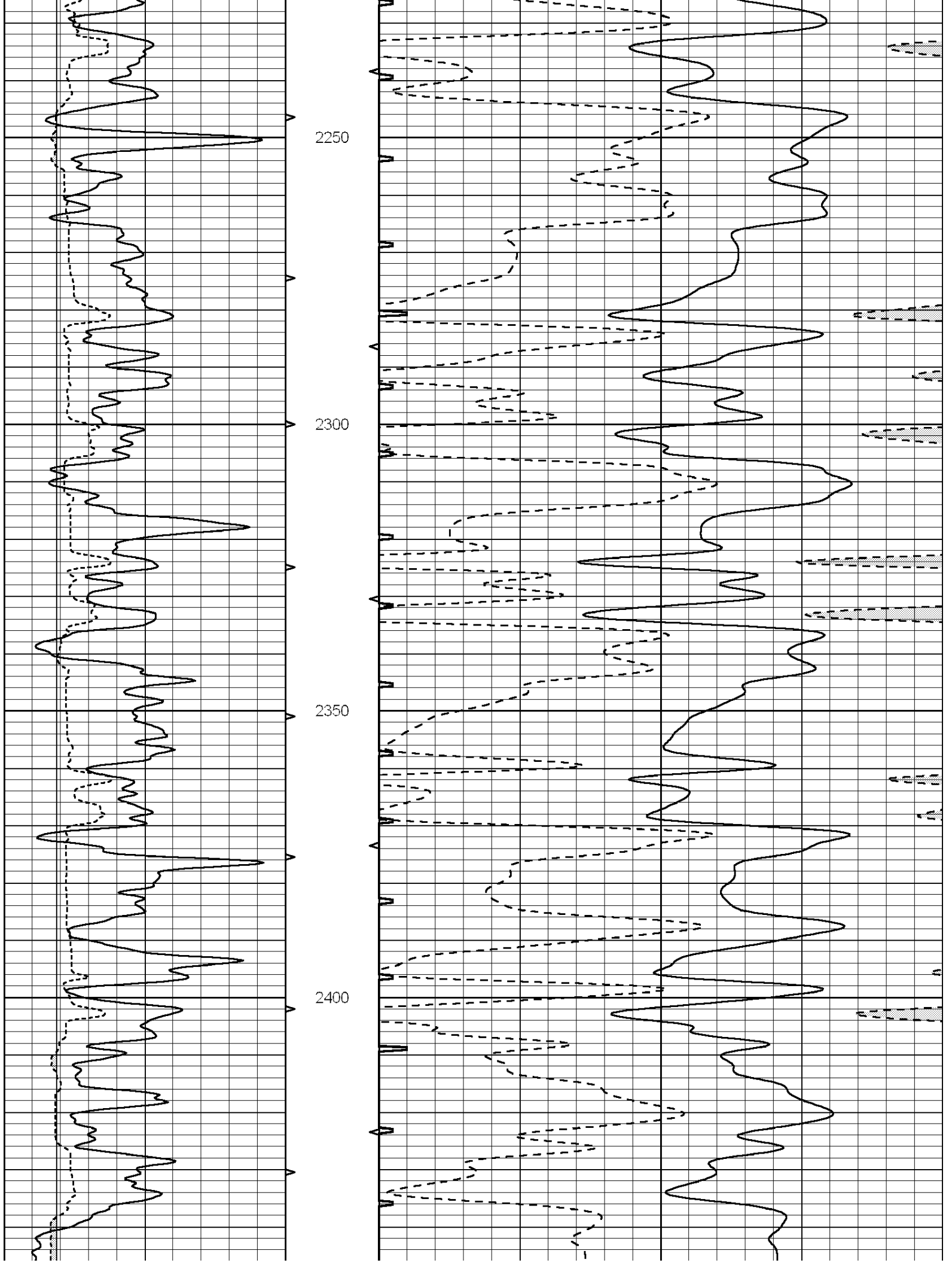
2050

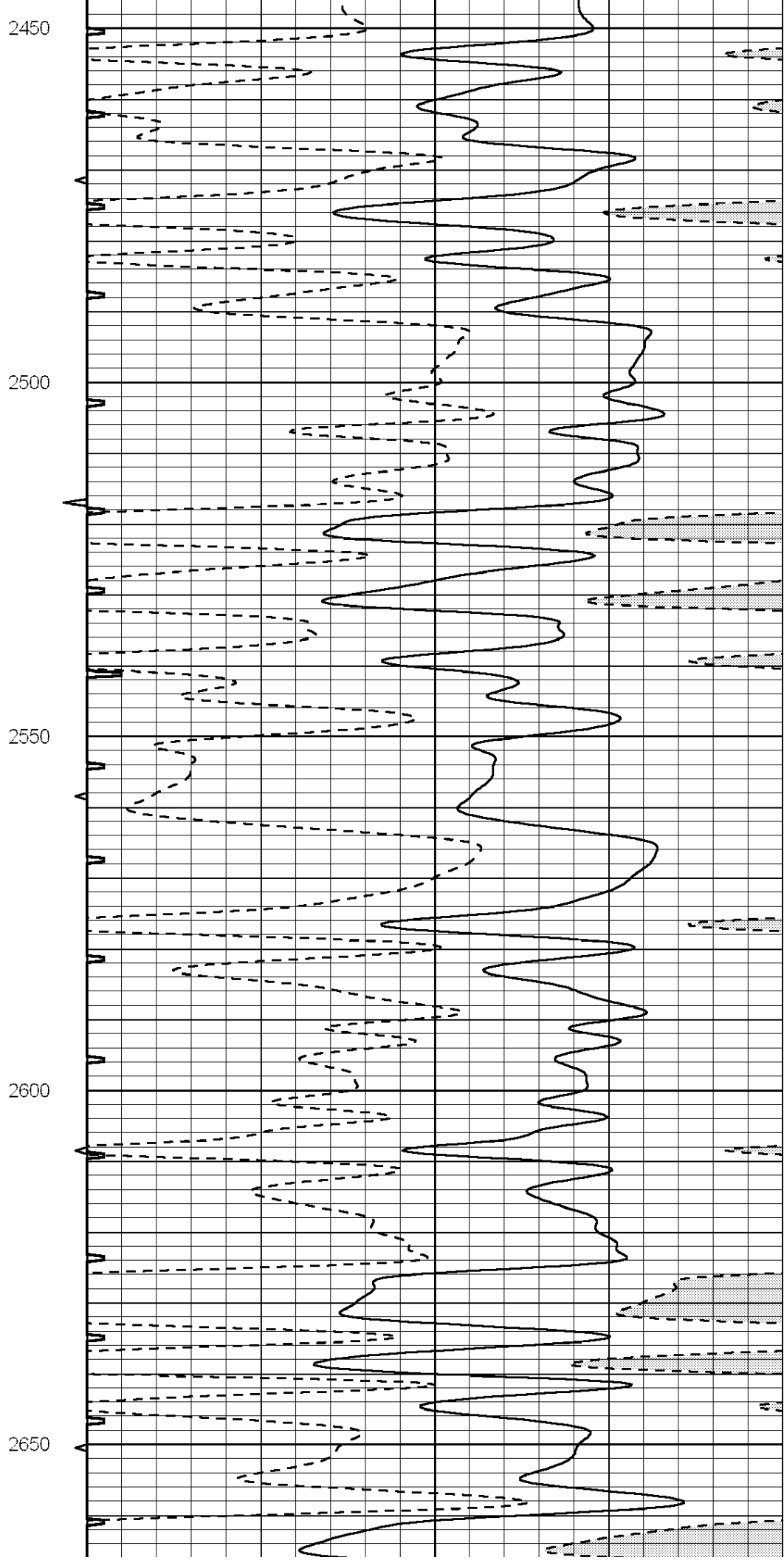
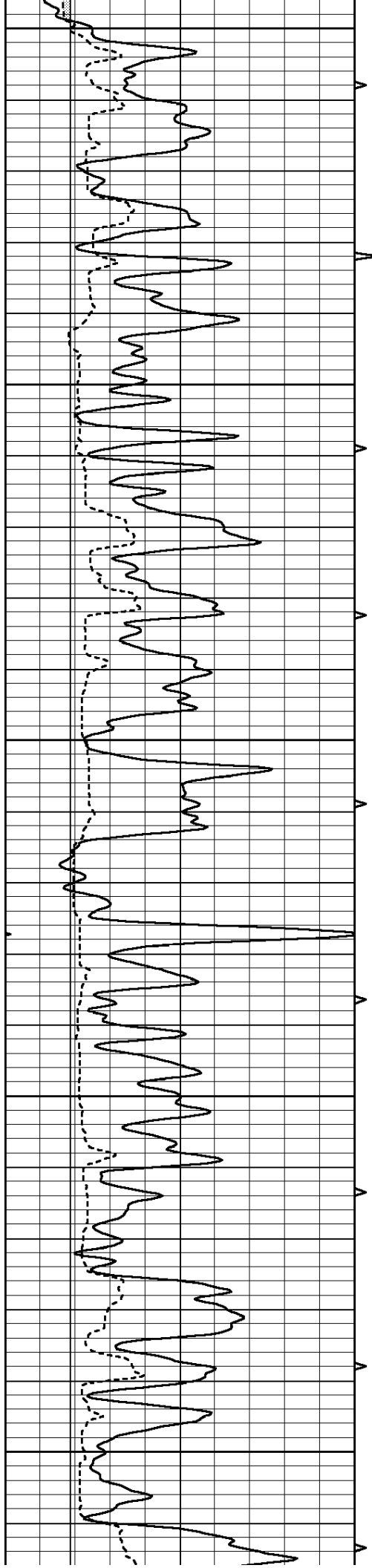
2100

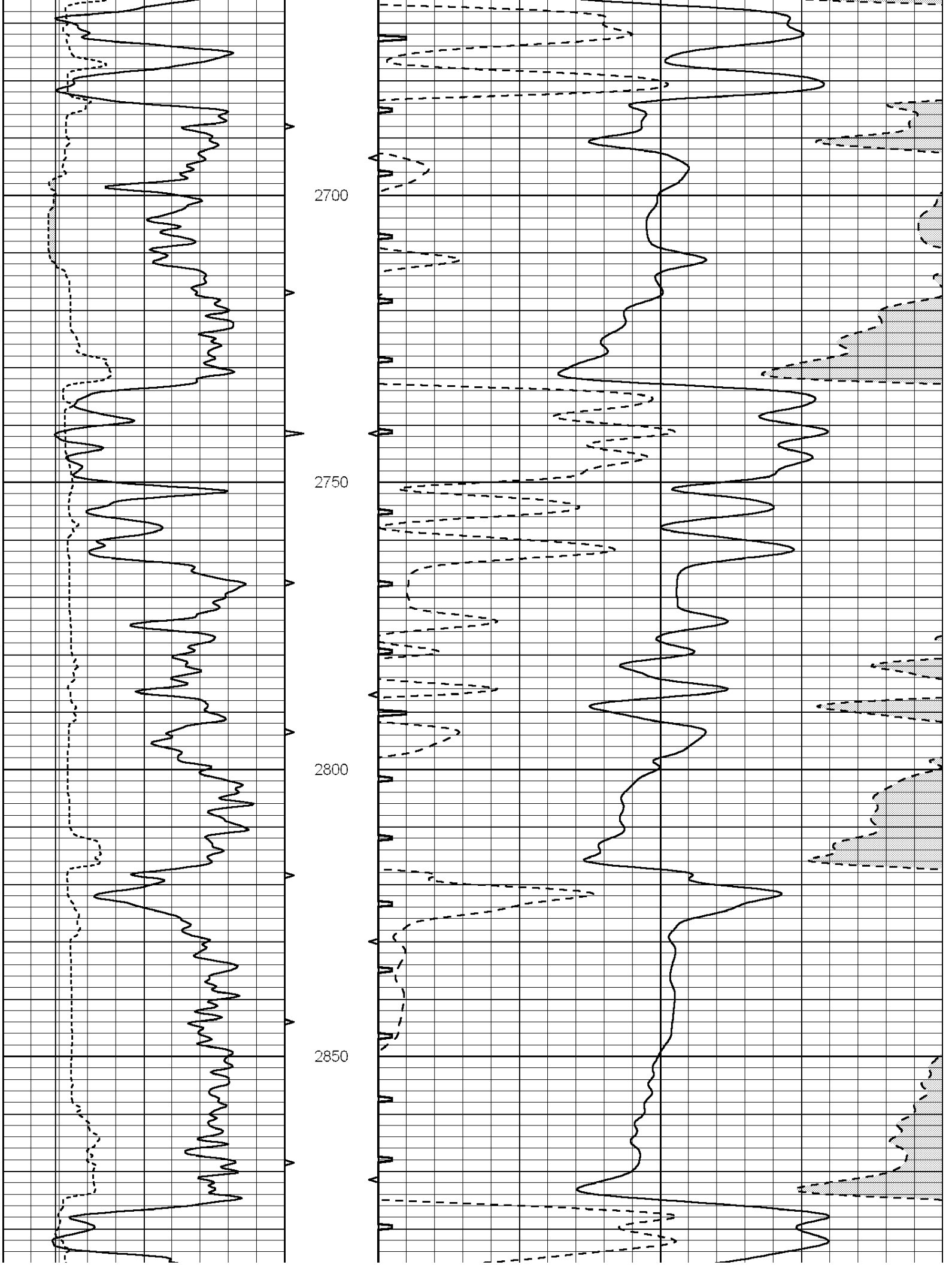
2150

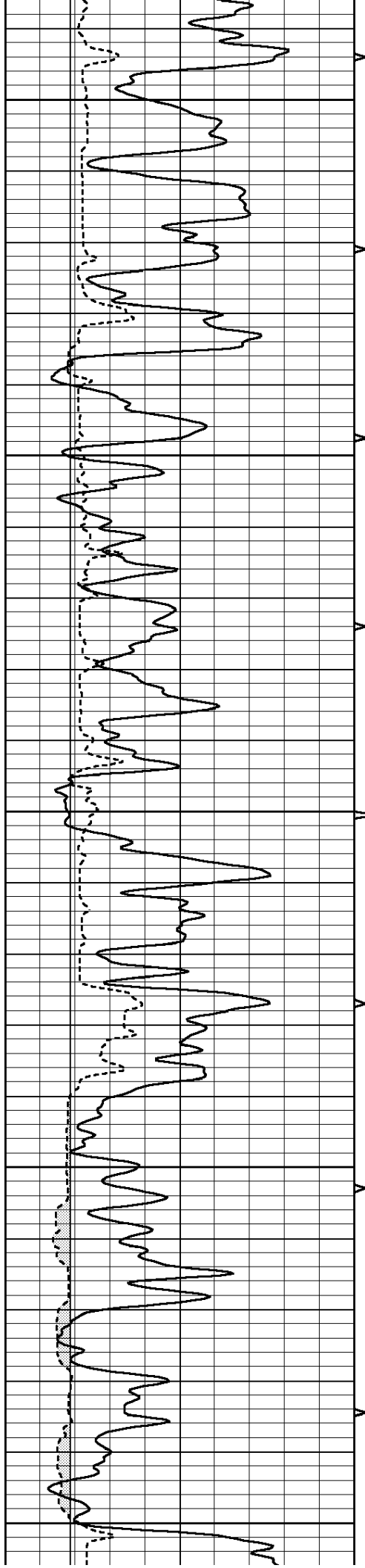
2200











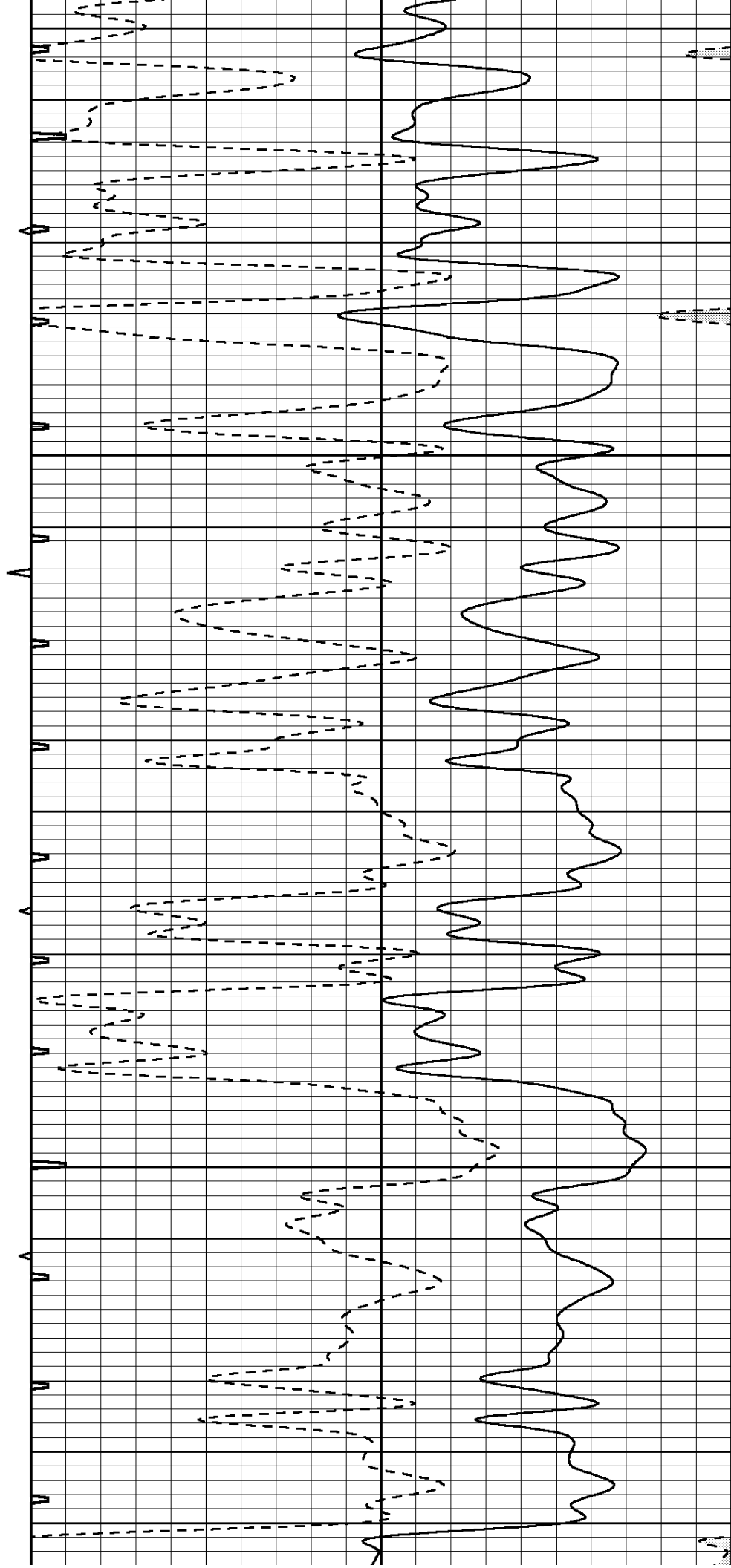
2900

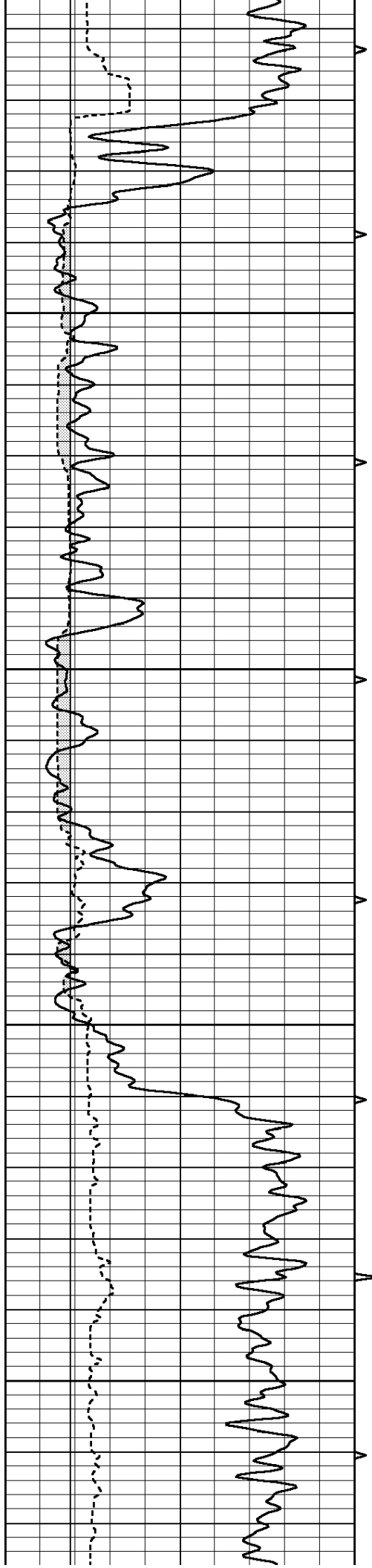
2950

3000

3050

3100



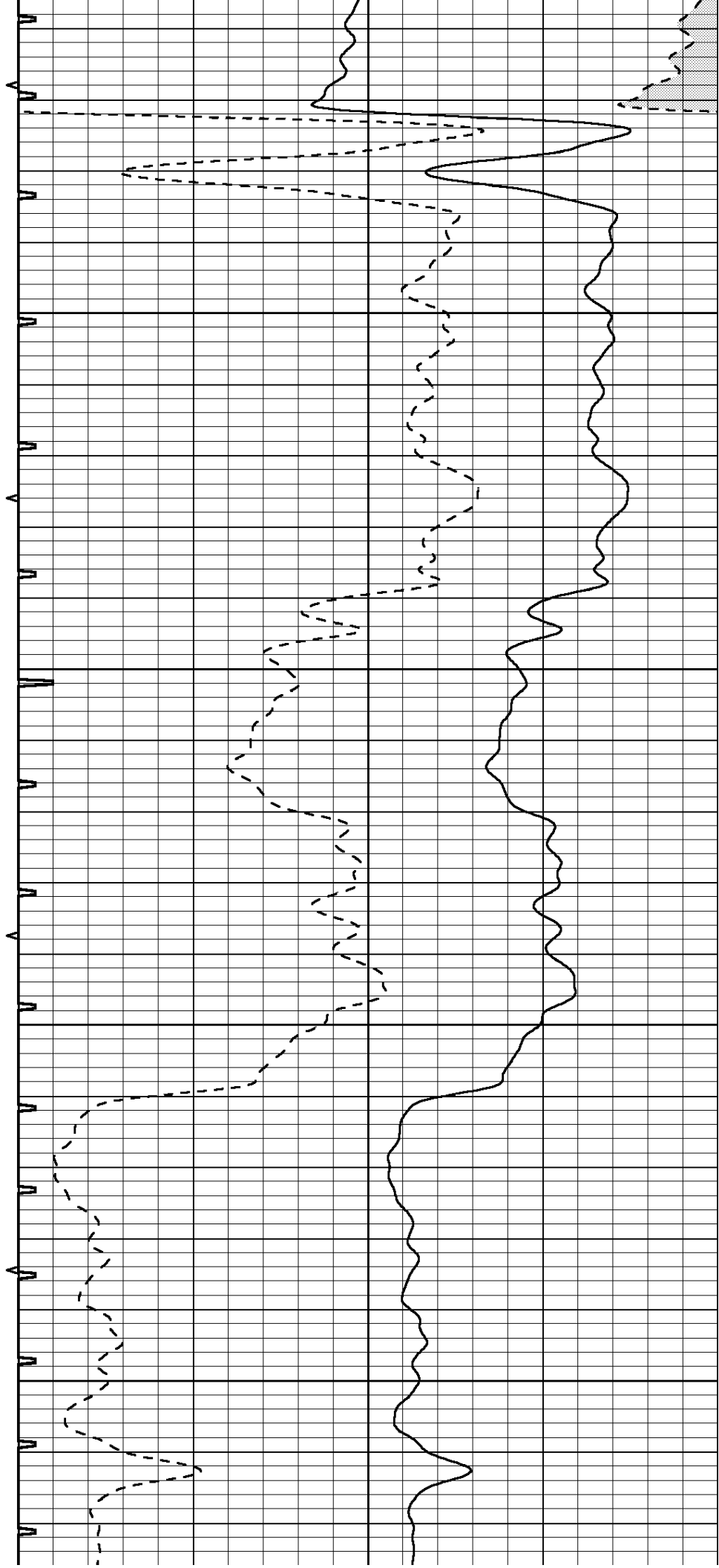


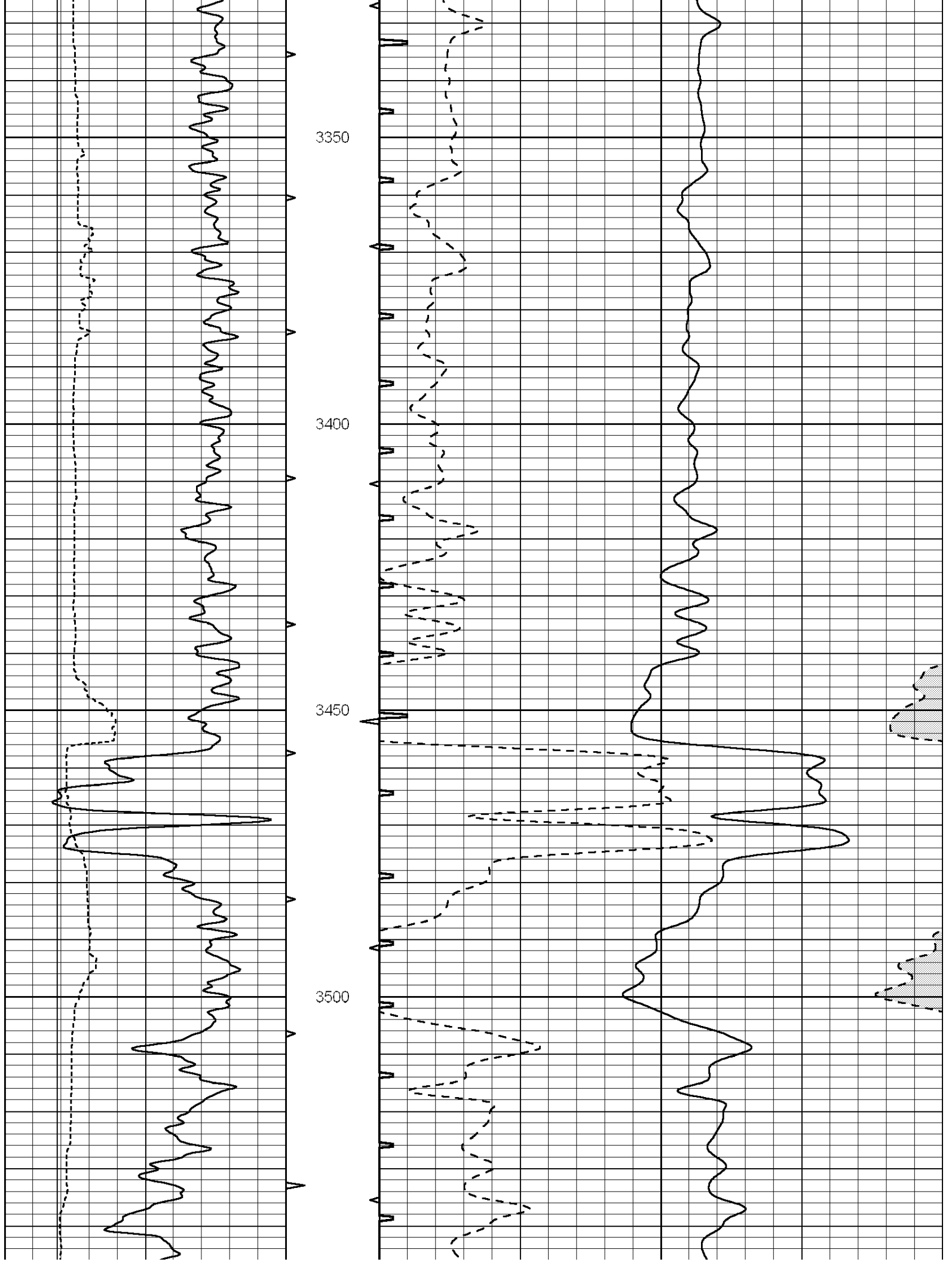
3150

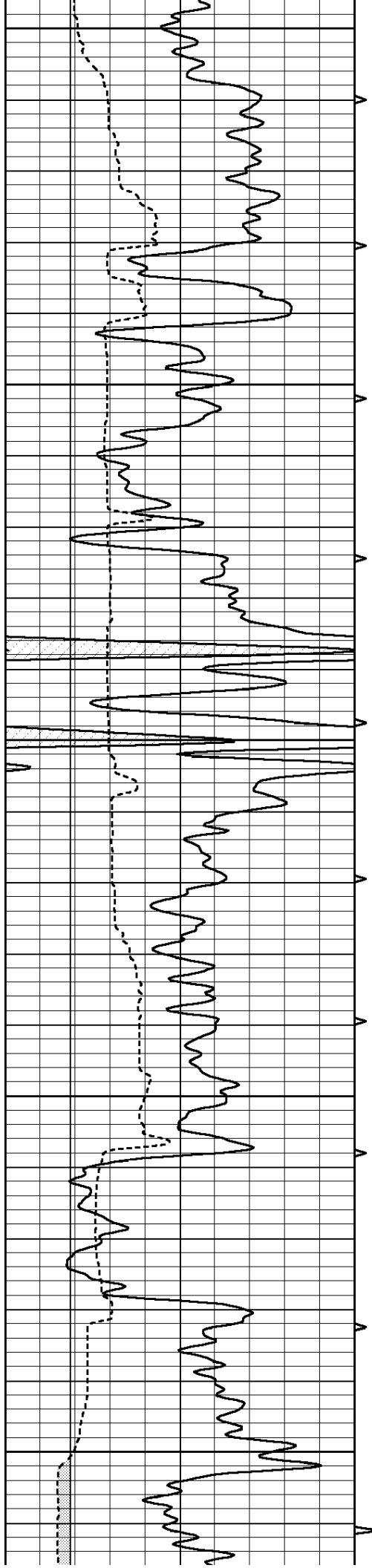
3200

3250

3300







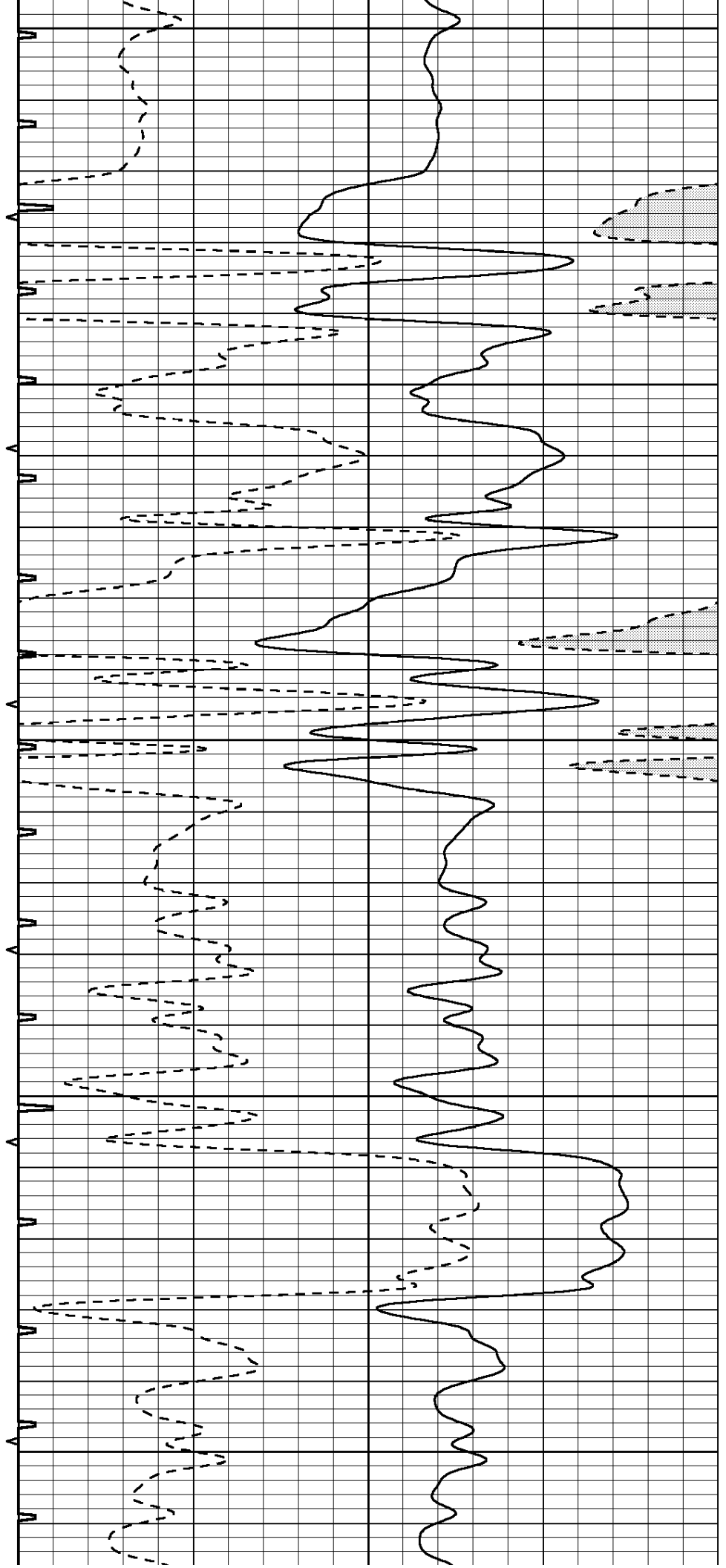
3550

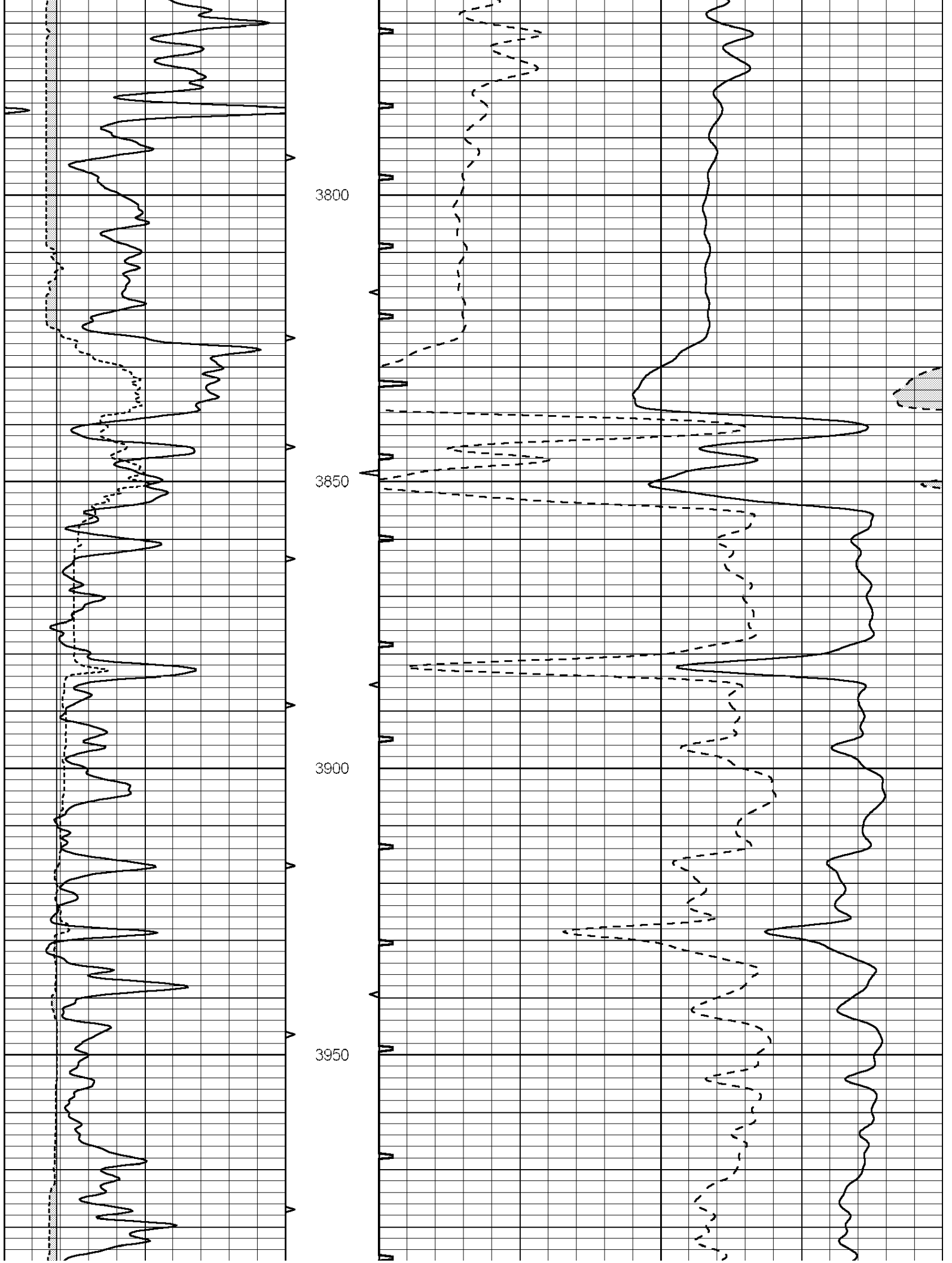
3600

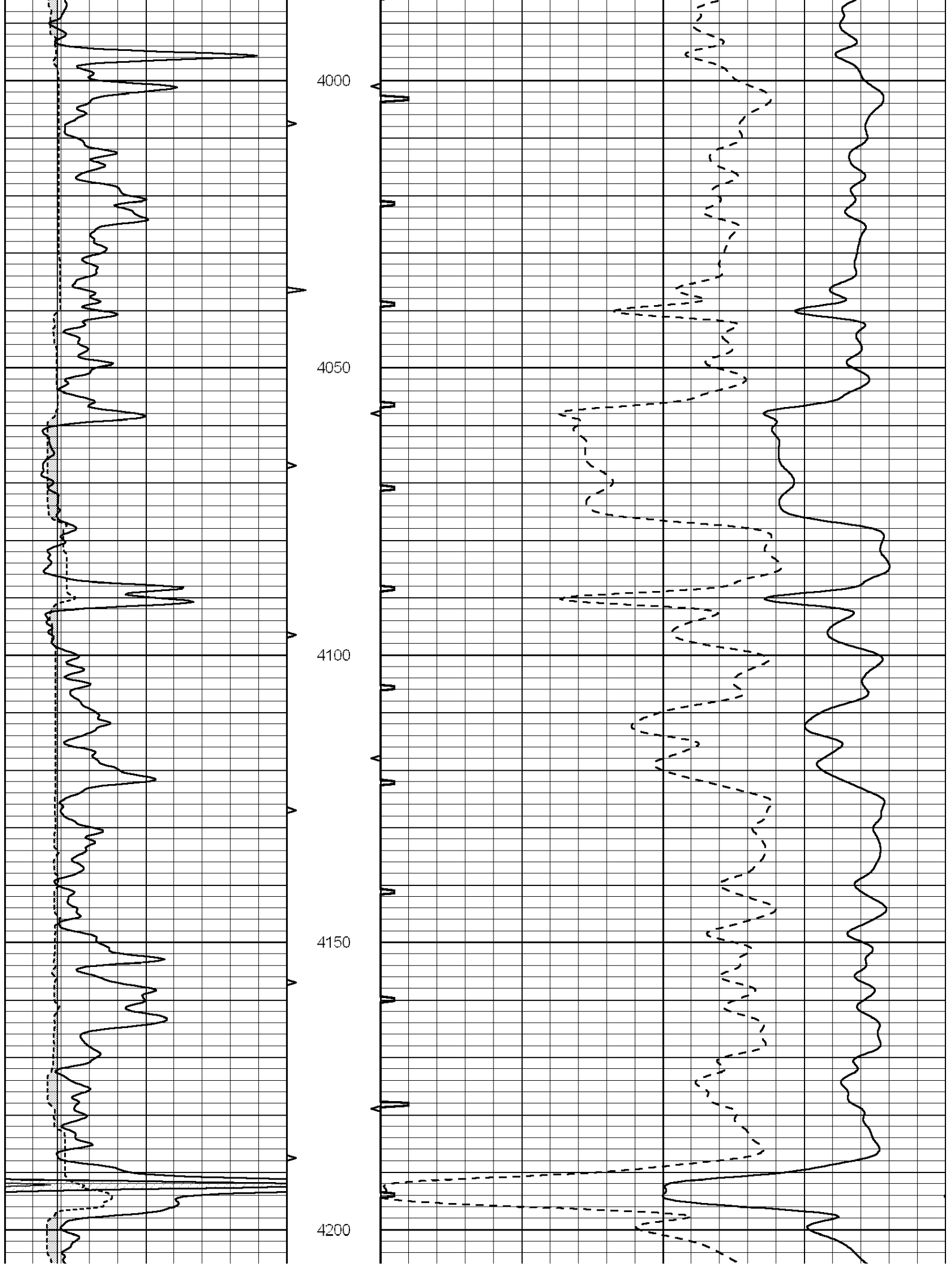
3650

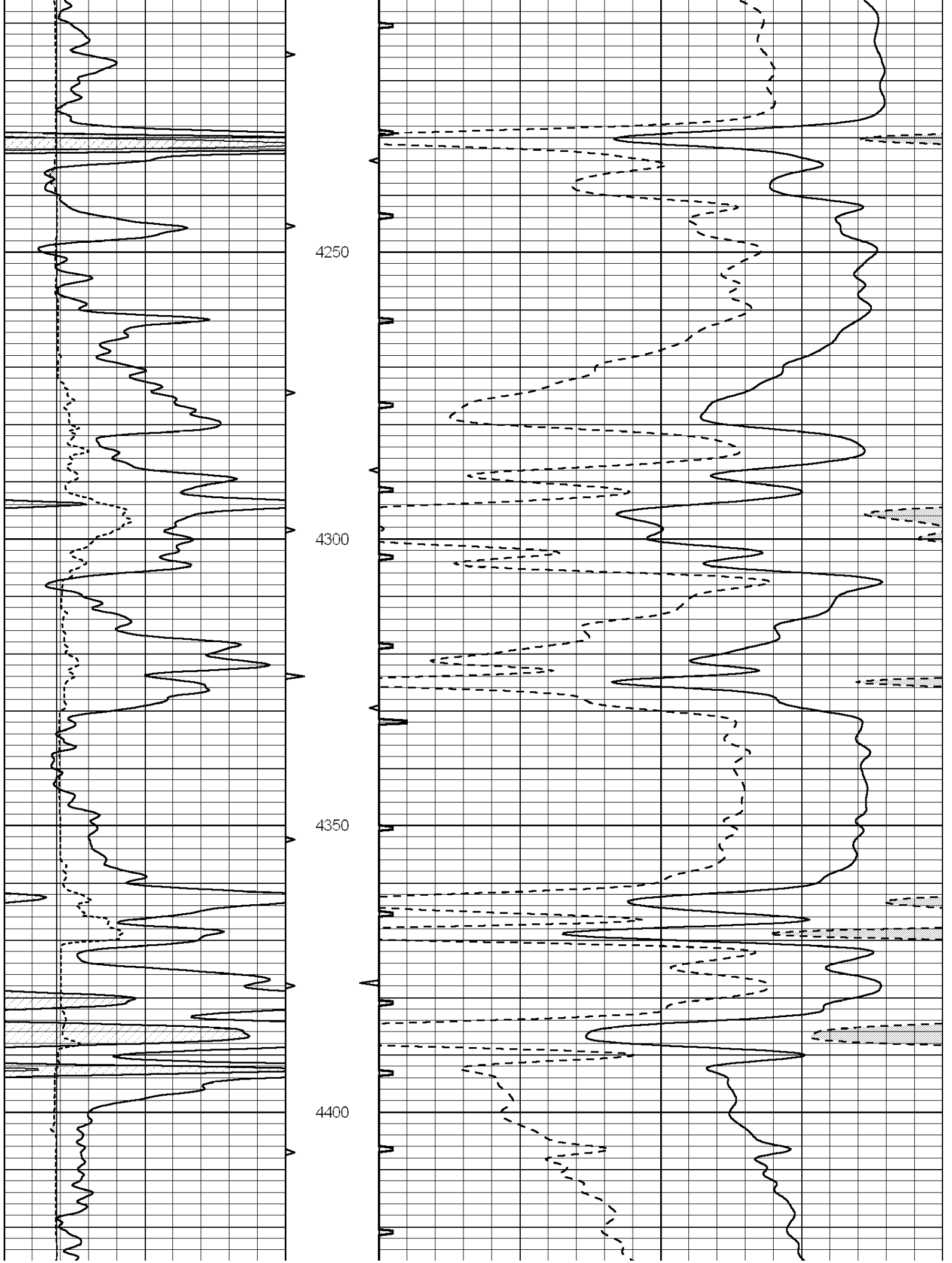
3700

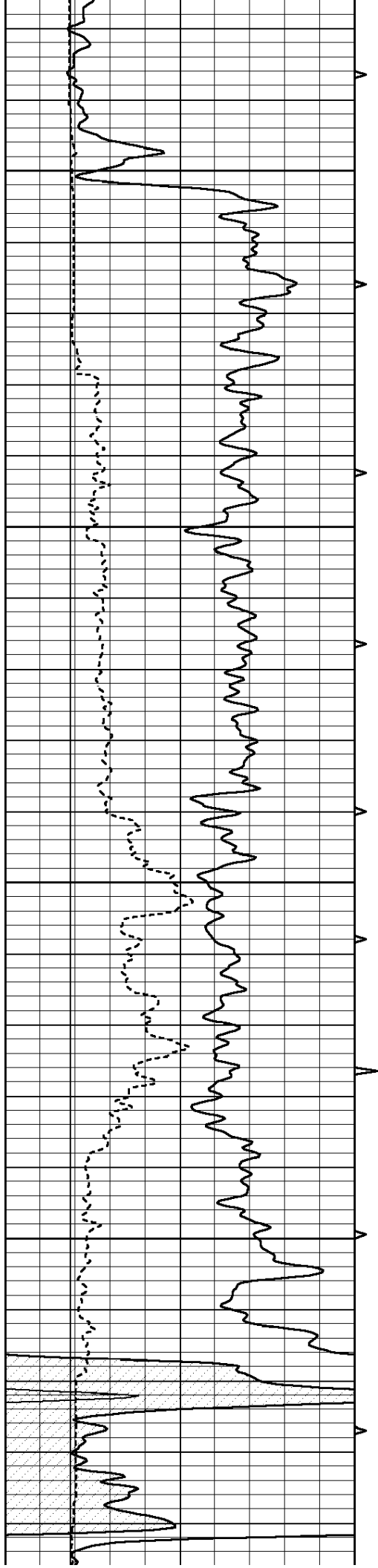
3750









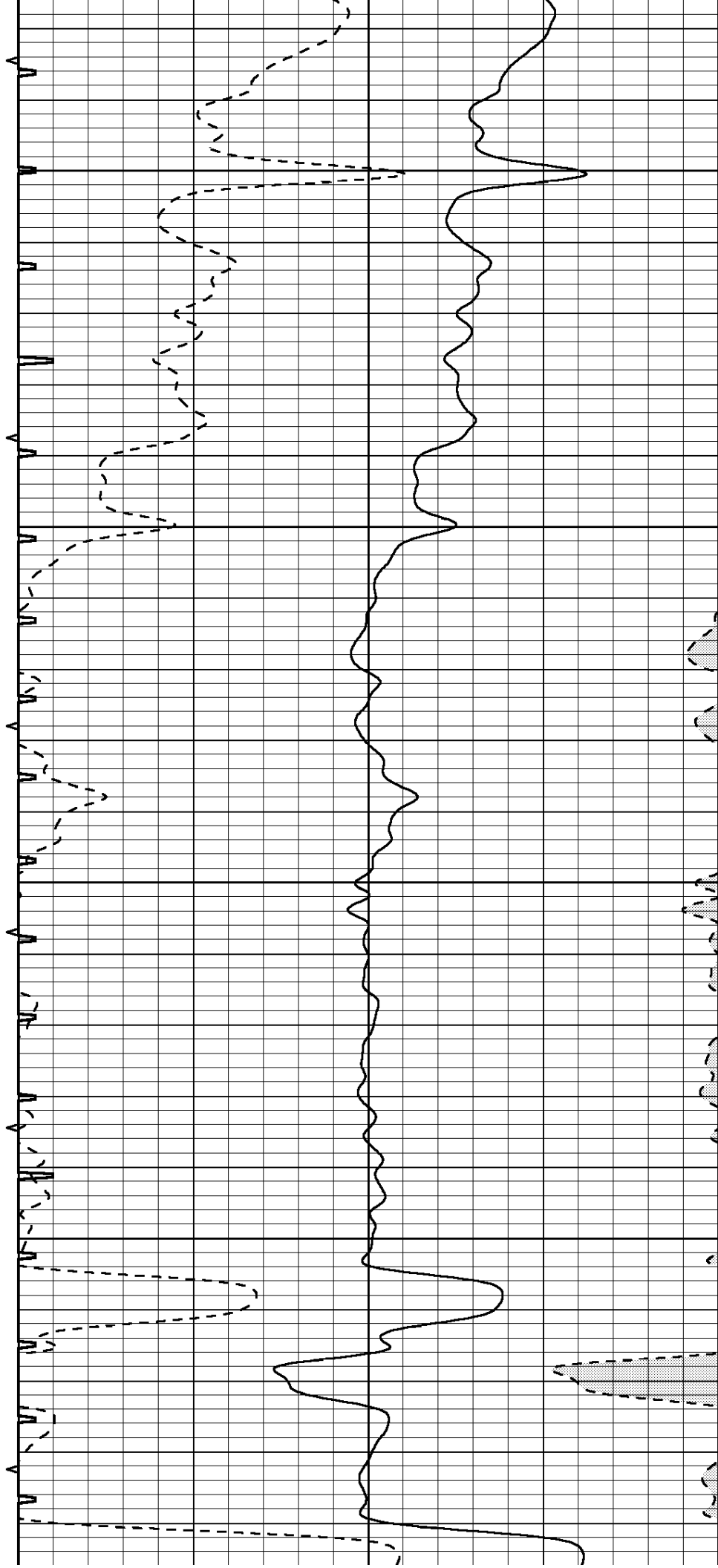


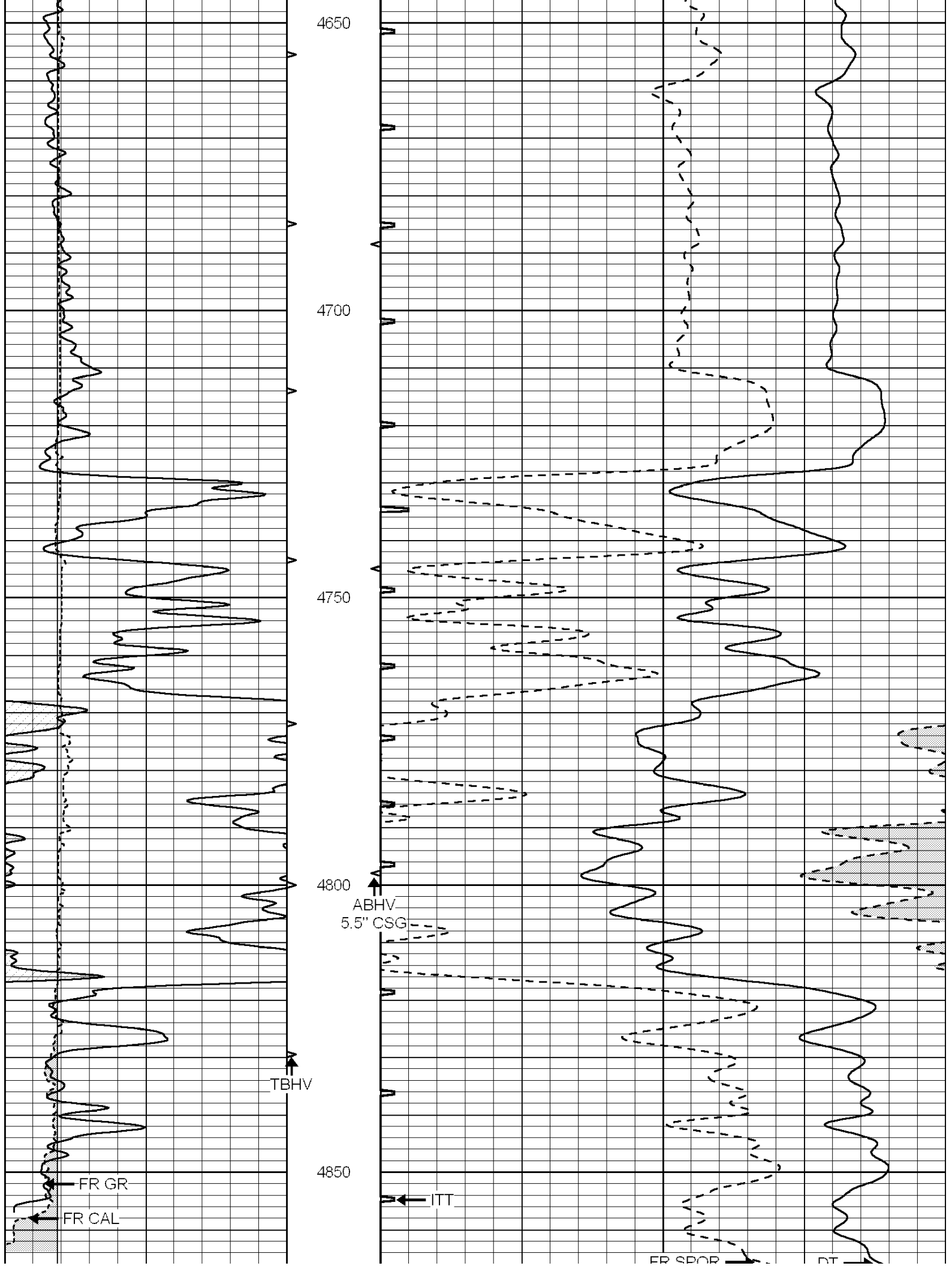
4450

4500

4550

4600





LTD 4876

0	GAMMA RAY (GAPI)	150	ABHV	140	DELTA TIME (usec/ft)	40
6	CALIPER (in)	16	10 (ft3)	0 30	SONIC POROSITY (pu)	-10
			TBHV	0	ITT (msec)	20
			0 (ft3)	10		

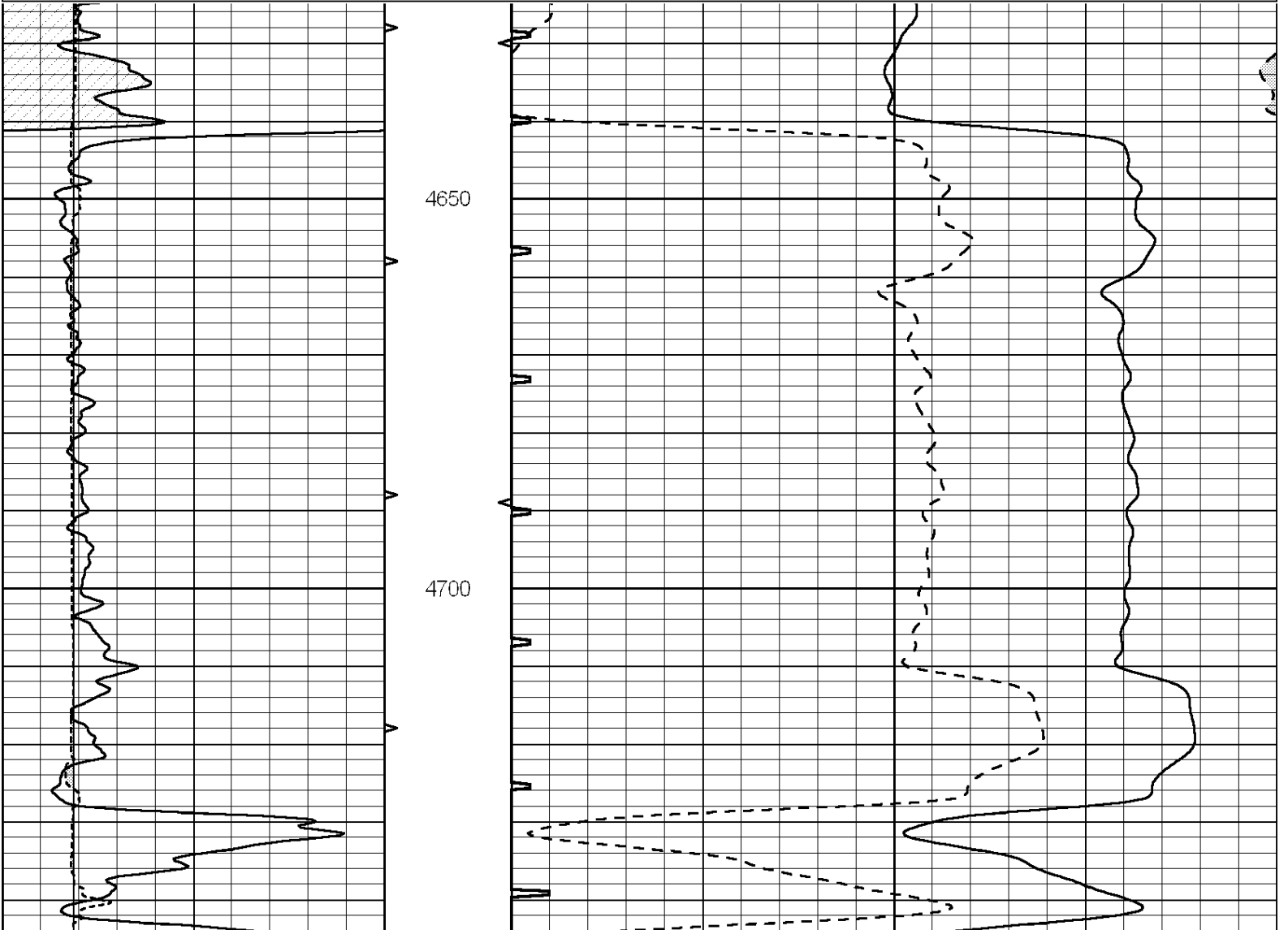


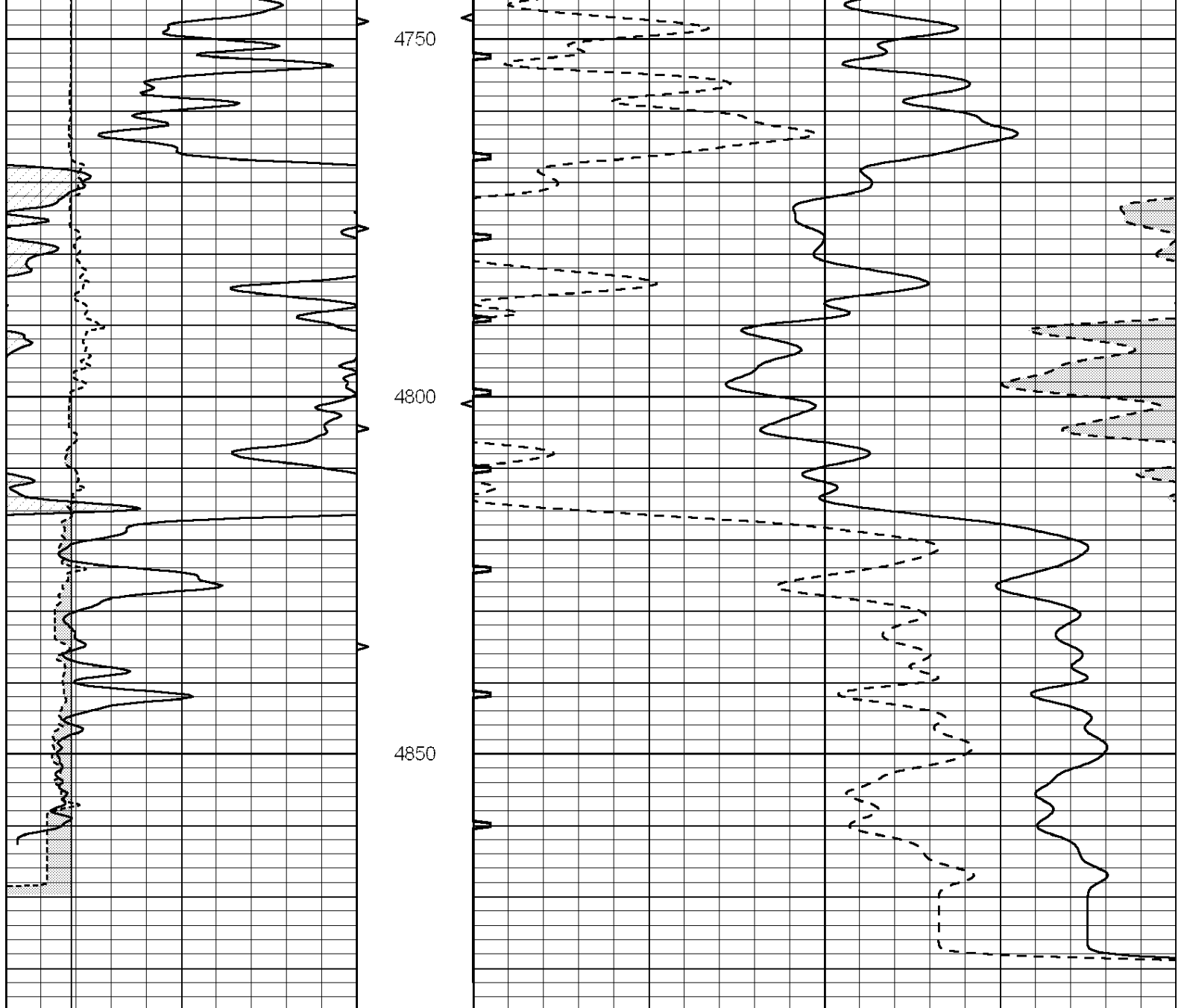
SUPERIOR
Hays,
Kansas

REPEAT SECTION

Database File: 005402pe.db
 Dataset Pathname: pass10.1
 Presentation Format: _slt
 Dataset Creation: Tue Jun 29 15:45:40 2010 by Calc Open-Cased 090629
 Charted by: Depth in Feet scaled 1:240

0	GAMMA RAY (GAPI)	150	ABHV	140	DELTA TIME (usec/ft)	40
6	CALIPER (in)	16	10 (ft3)	0 30	SONIC POROSITY (pu)	-10
			TBHV	0	ITT (msec)	20
			0 (ft3)	10		





0	GAMMA RAY (GAPI)	150	ABHV	140	DELTA TIME (usec/ft)	40
6	CALIPER (in)	16	10 (ft3)	0 30	SONIC POROSITY (pu)	-10
			TBHV	0	ITT (msec)	20
			0 (ft3)	10		