



SUPERIOR
Hays,
Kansas

MICRO
LOG

Company	DIXON ENERGY, INC.	Company	DIXON ENERGY, INC.
Well	ROLF UNIT #1	Well	ROLF UNIT #1
Field	BARKIN	Field	BARKIN
County	KINGMAN	County	KINGMAN
State	KANSAS	State	KANSAS
Location:	API # : 15-095-22209-0000	Location:	SEC 18 TWP 30S RGE 10W 330' FSL & 990' FWL
Permanent Datum	GROUND LEVEL	Elevation	1786
Log Measured From	KELLY BUSHING 10' A.G.L.	Other Services	CDL/CNL/PE DIL/SON
Drilling Measured From	KELLY BUSHING	Elevation	K.B. 1796 D.F. G.L. 1786

Date	6-29-10
Run Number	THREE
Depth Driller	4875
Depth Logger	4876
Bottom Logged Interval	4858
Top Log Interval	3400
Casing Driller	8 5/8" @ 311
Casing Logger	308
Bit Size	7 7/8
Type Fluid in Hole	CHEMICAL MUD
Density / Viscosity	9.4/54
pH / Fluid Loss	9.5/9.6
Source of Sample	FLOWLINE
Rim @ Meas. Temp	.58 @ 100F
Rmf @ Meas. Temp	.43 @ 100F
Rmc @ Meas. Temp	.69 @ 100F
Source of Rmf / Rmc	MEASURED
Rim @ BHT	.47 @ 123F
Time Circulation Stopped	2 HOURS
Time Logger on Bottom	
Maximum Recorded Temperature	123F
Equipment Number	680
Location	HAYS, KS.
Recorded By	JASON CAPPELLUCCI
Witnessed By	RYAN DIXON

<<< Fold Here >>>

All interpretations are opinions based on inferences from electrical or other measurements and we cannot and do not guarantee the accuracy or correctness of any interpretation, and we shall not, except in the case of gross or willful negligence on our part, be liable or responsible for any loss, costs, damages, or expenses incurred or sustained by anyone resulting from any interpretation made by any of our officers, agents or employees. These interpretations are also subject to our general terms and conditions set out in our current Price Schedule.

Comments

THANK YOU FOR USING SUPERIOR WELL SERVICE (785) 628-6395
DIRECTIONS
NASHVILLE KS. - 1 S. - 1 1/2 W. - N. INTO

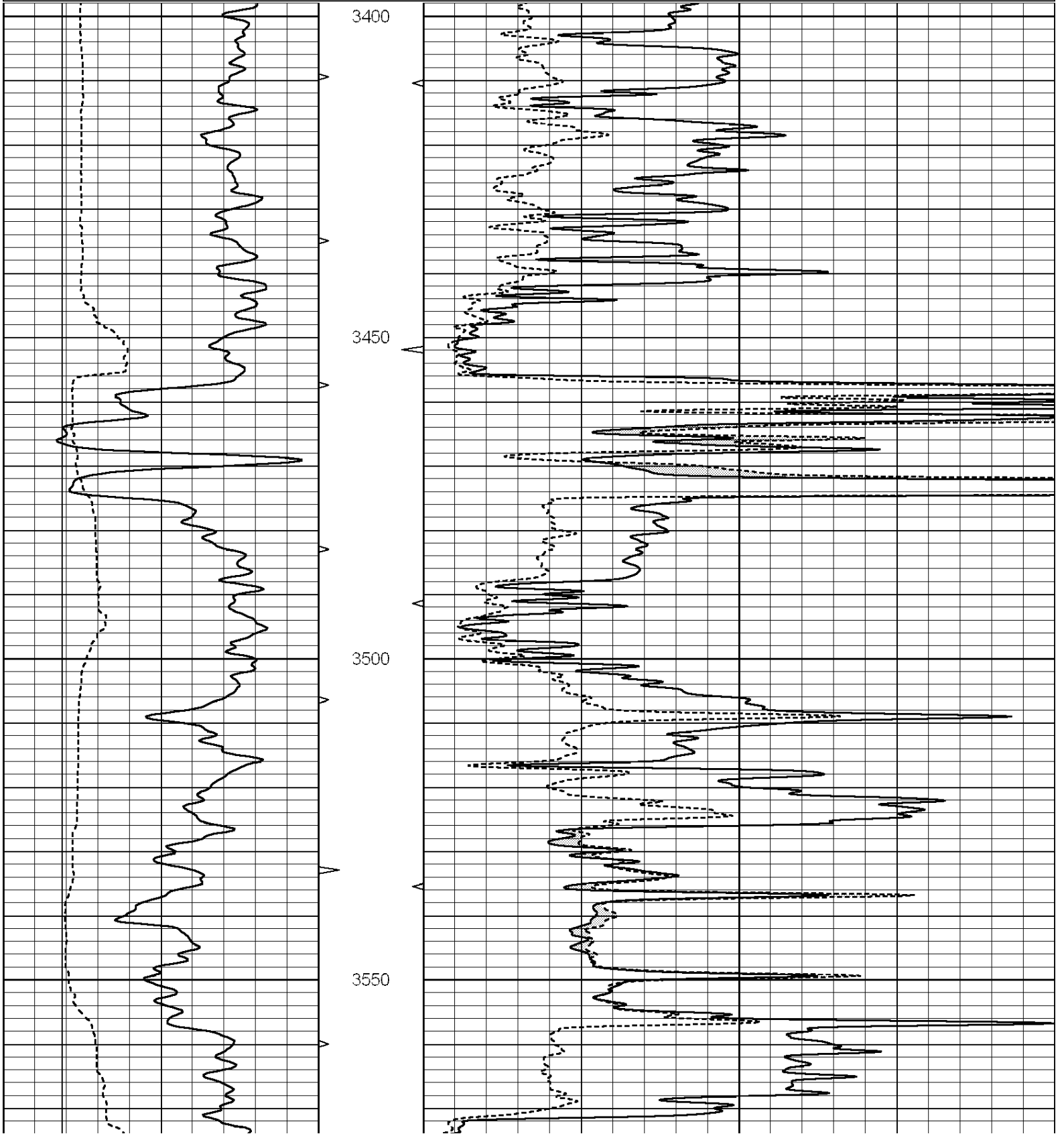


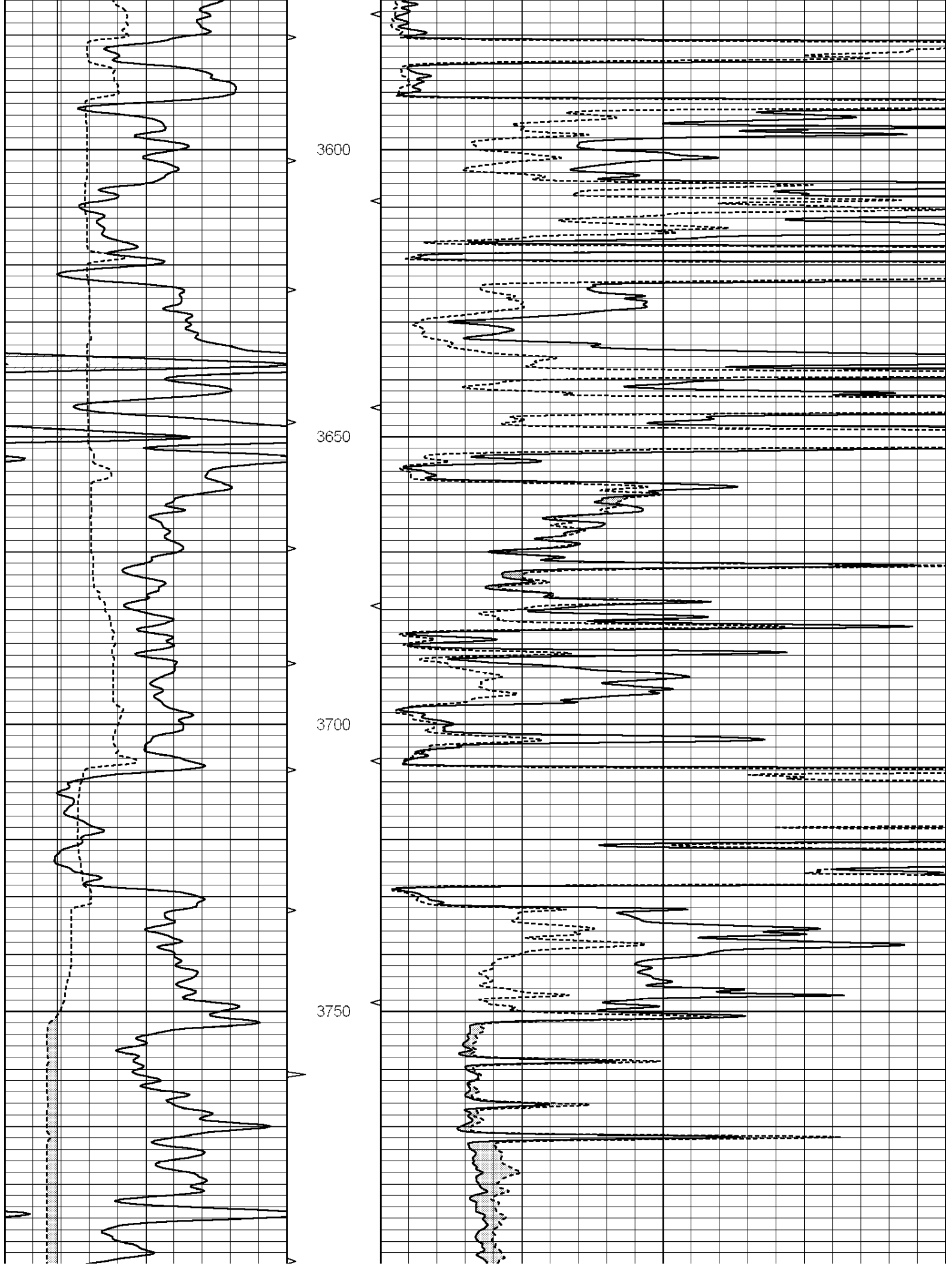
SUPERIOR
Hays,
Kansas

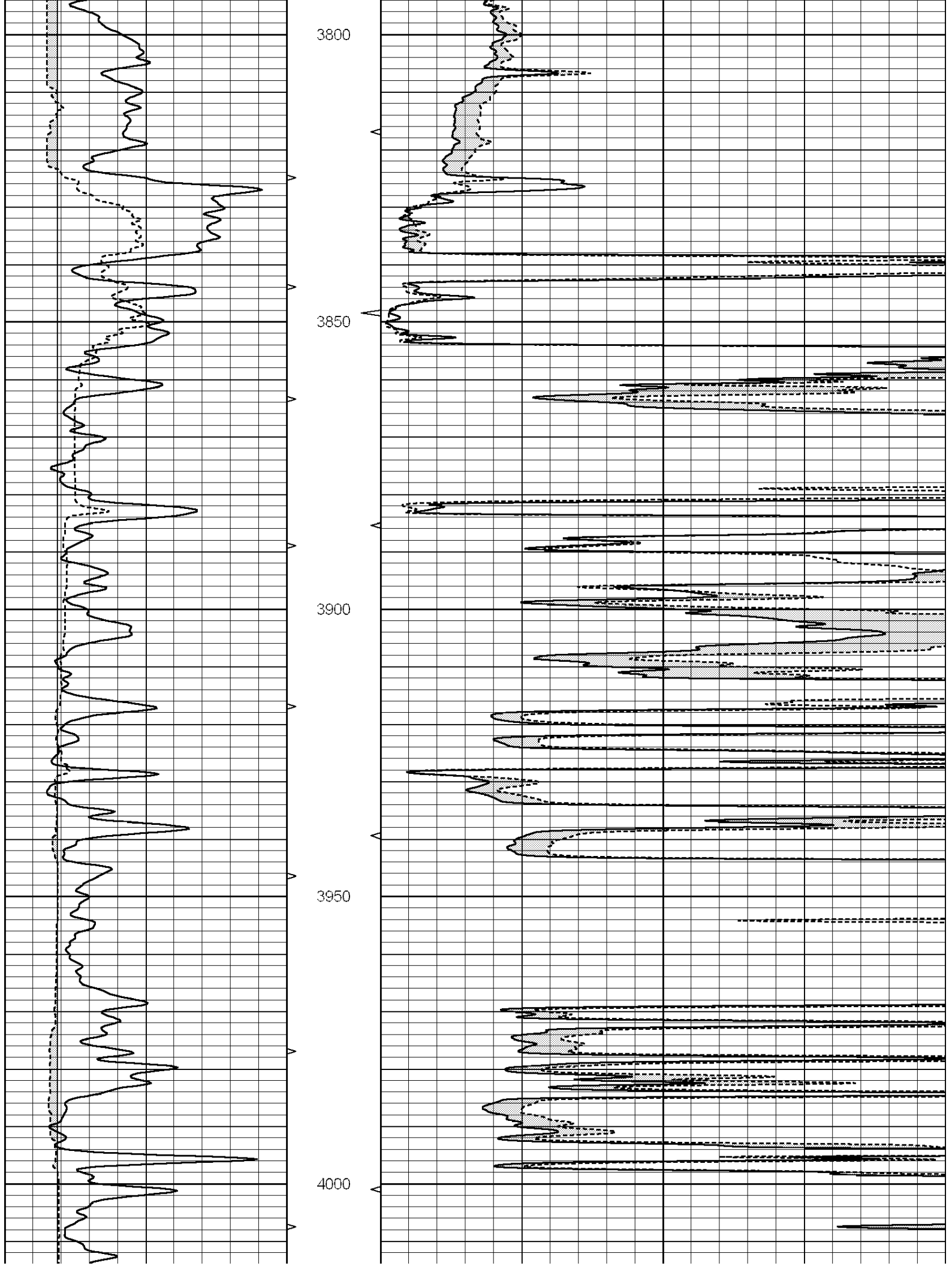
MAIN SECTION

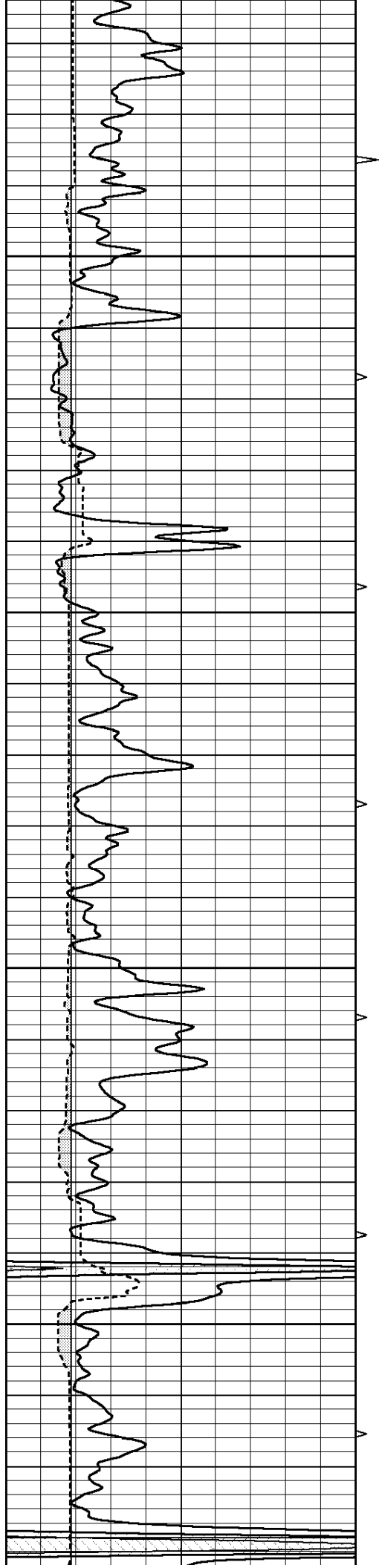
Database File: 005402pe.db
 Dataset Pathname: pass11.1
 Presentation Format: _micro
 Dataset Creation: Tue Jun 29 16:35:33 2010 by Calc Open-Cased 090629
 Charted by: Depth in Feet scaled 1:240

0	GAMMA RAY (GAPI)	150	ABHV	0	MEL1.5 (Ohm-m)	40
6	CALIPER (in)	16	10 (ft3)	0 0	MEL2.0 (Ohm-m)	40
			TBHV			
			0 (ft3)	10		







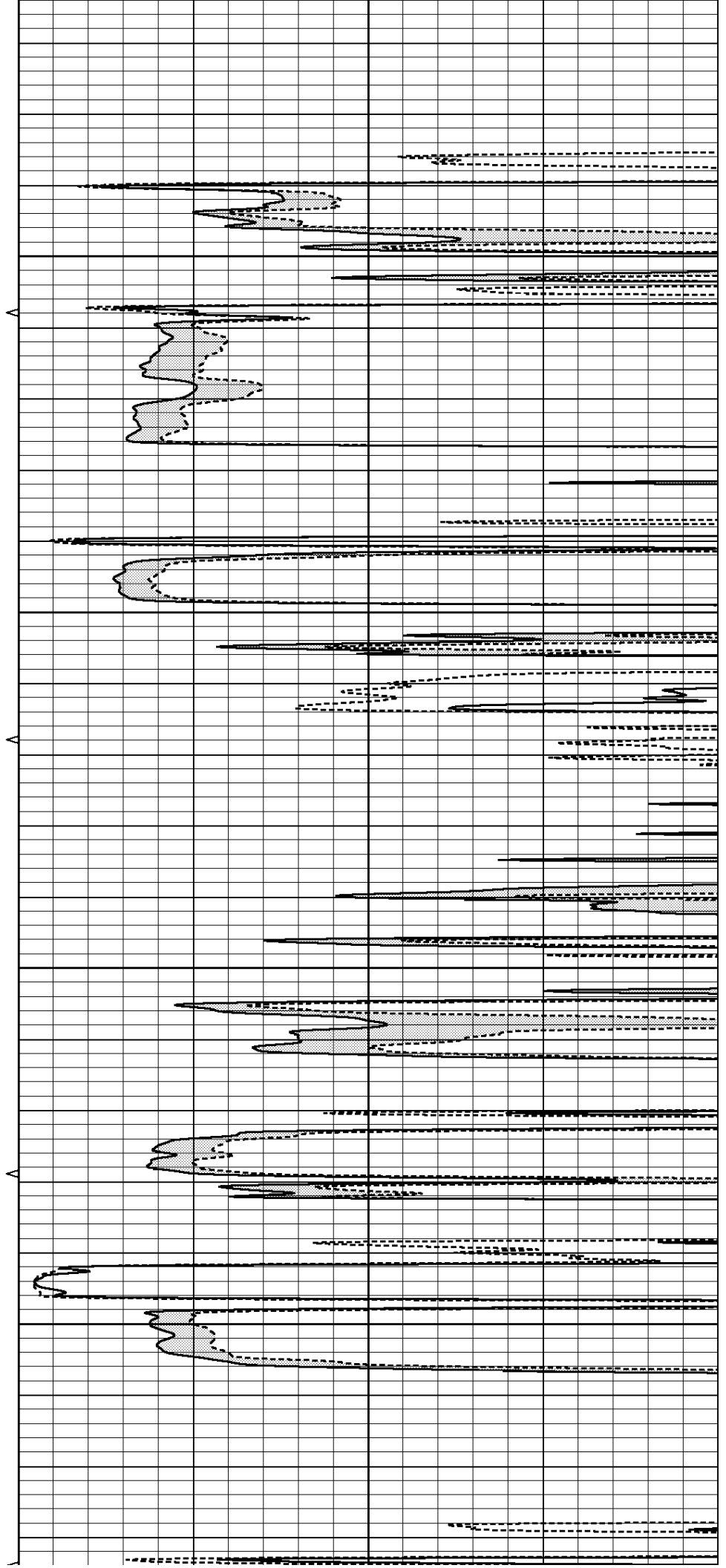


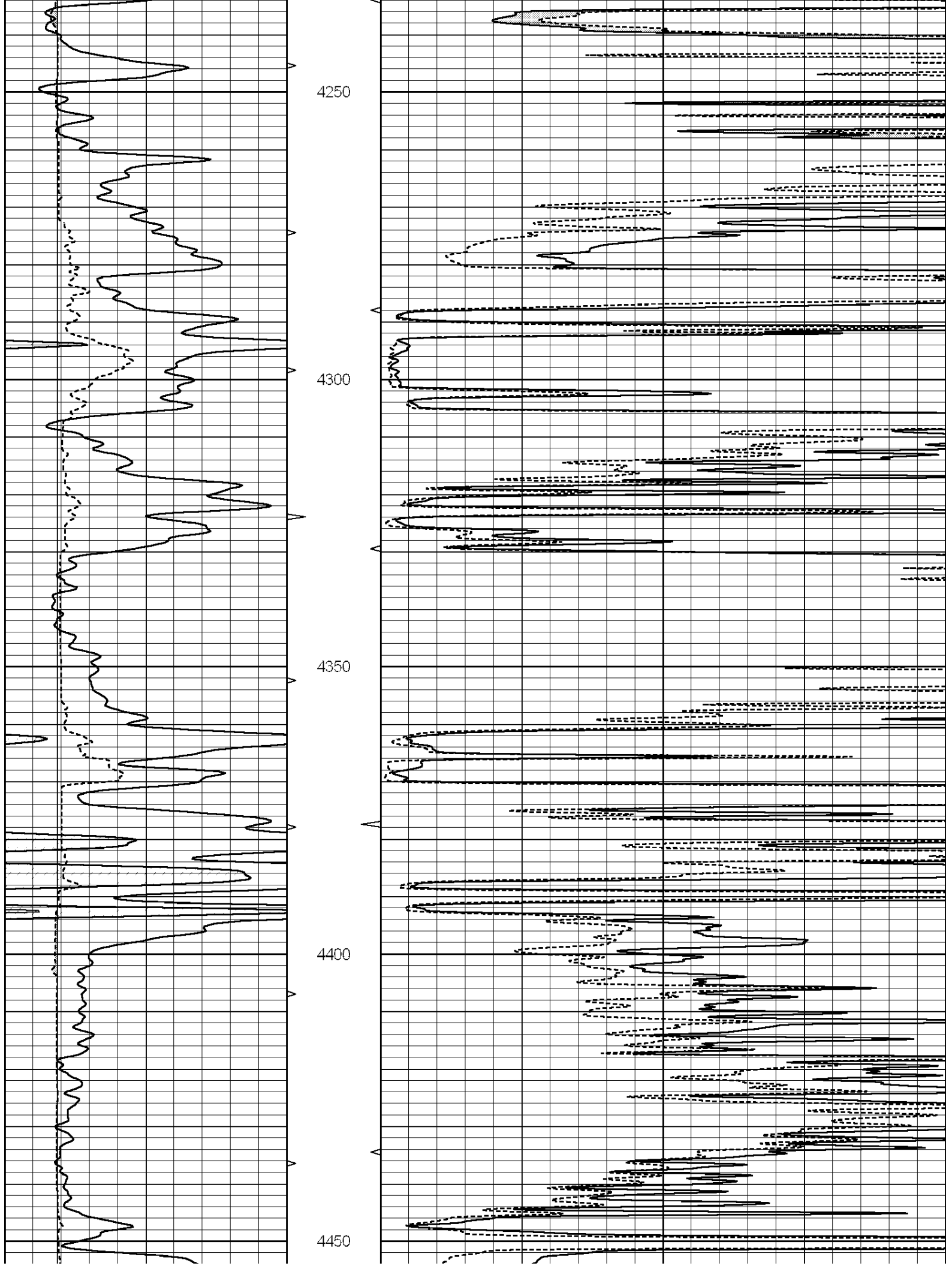
4050

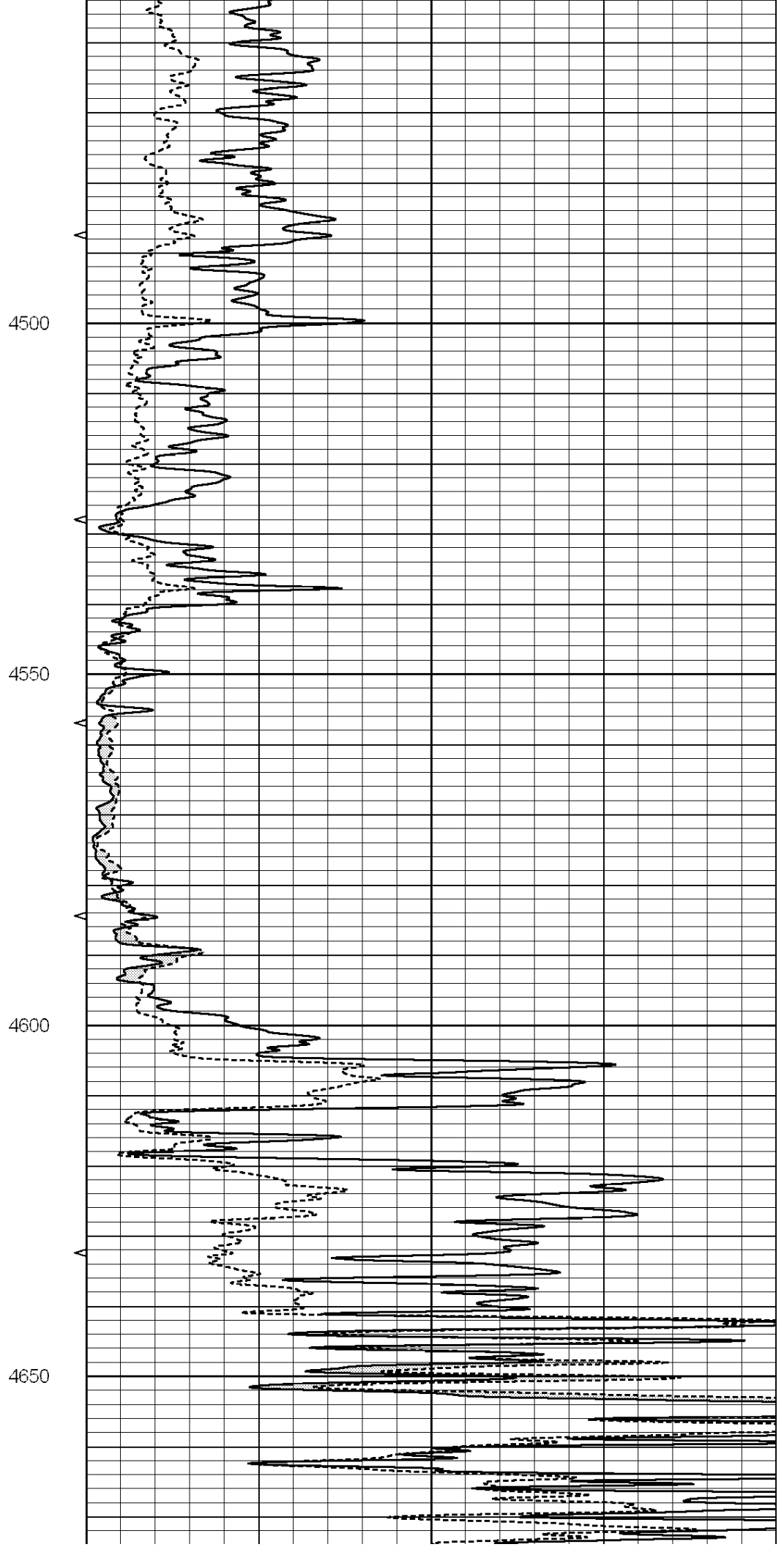
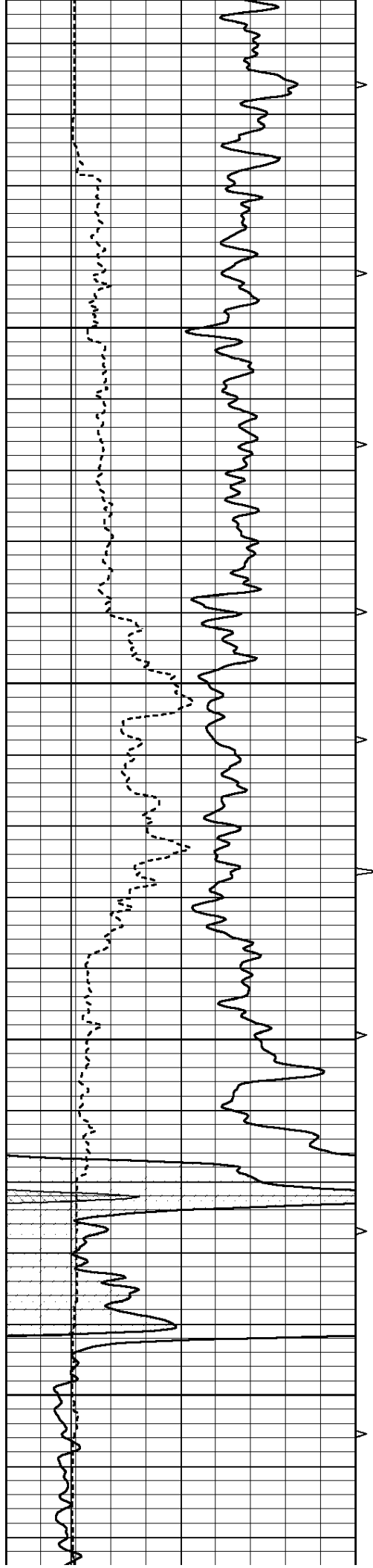
4100

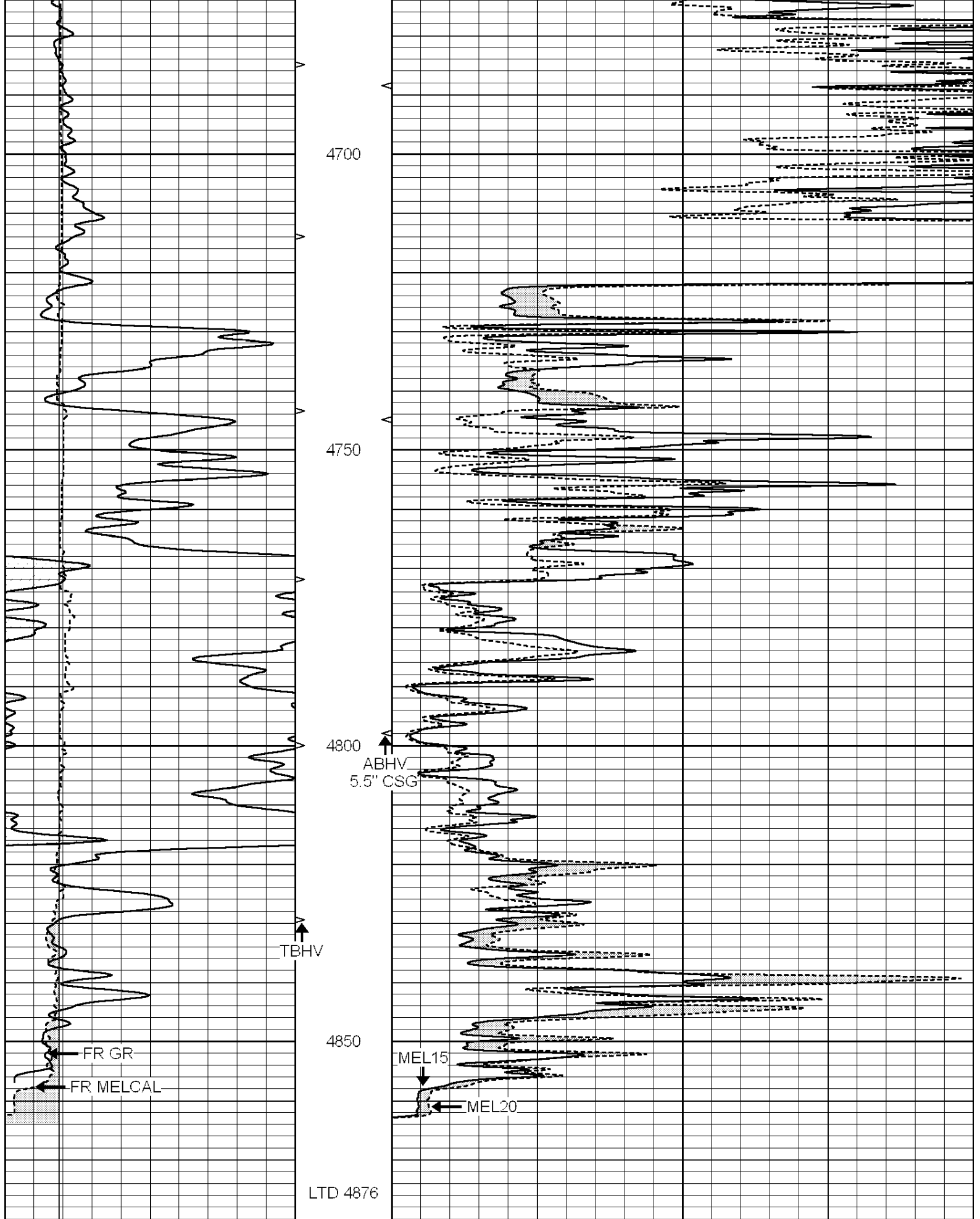
4150

4200









LTD 4876

0	GAMMA RAY (GAPI)	150	ABHV	0	MEL1.5 (Ohm-m)	40
6	CALIPER (in)	16	10 (ft3)	0 0	MEL2.0 (Ohm-m)	40
			TBHV			

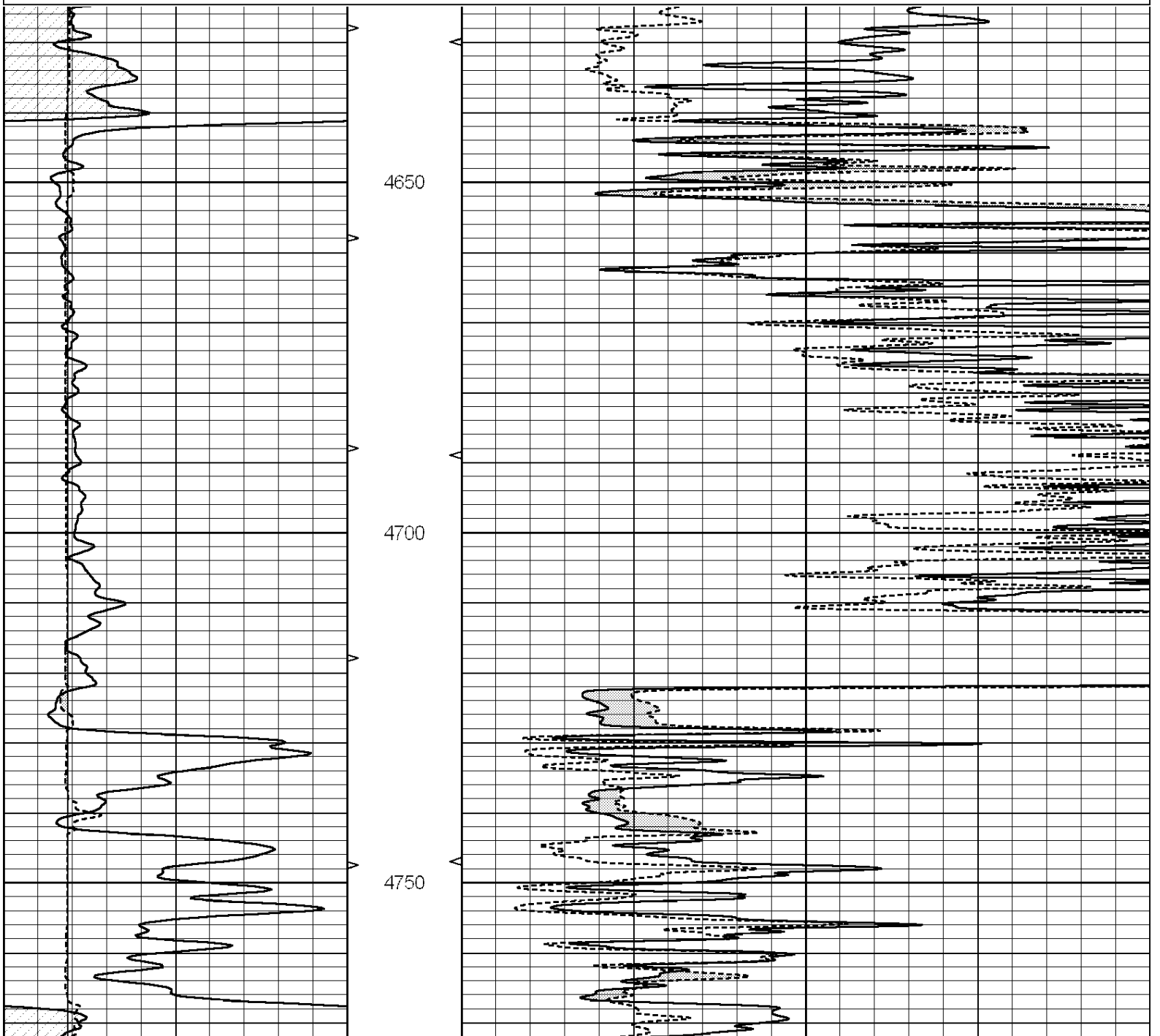


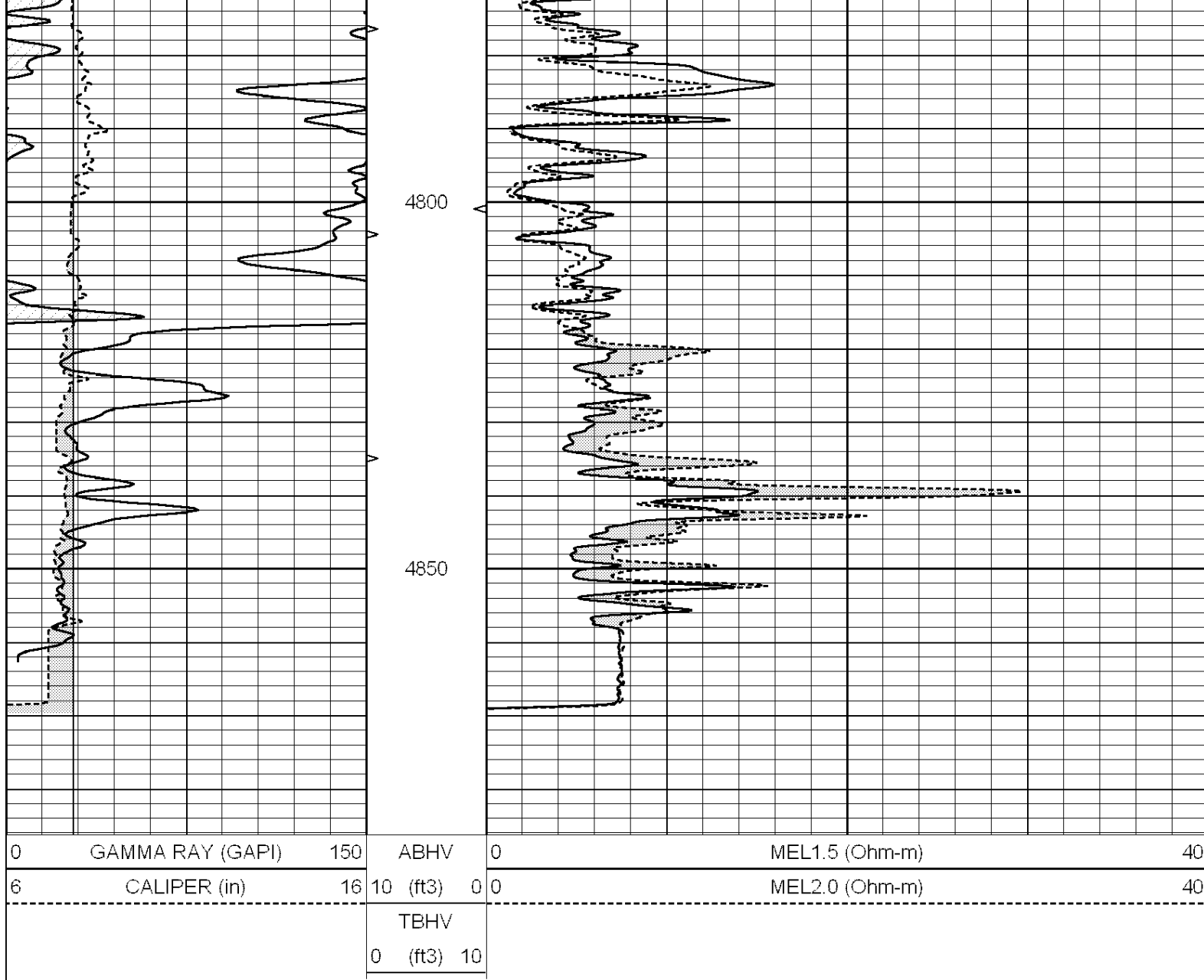
SUPERIOR
Hays,
Kansas

REPEAT SECTION

Database File: 005402pe.db
 Dataset Pathname: pass10.1
 Presentation Format: _micro
 Dataset Creation: Tue Jun 29 15:45:40 2010 by Calc Open-Cased 090629
 Charted by: Depth in Feet scaled 1:240

0	GAMMA RAY (GAPI)	150	ABHV	0	MEL1.5 (Ohm-m)	40
6	CALIPER (in)	16	10 (ft3)	0 0	MEL2.0 (Ohm-m)	40
			TBHV			
			0 (ft3) 10			





Calibration Report

Database File: 005402pe.db
 Dataset Pathname: pass11.1
 Dataset Creation: Tue Jun 29 16:35:33 2010 by Calc Open-Cased 090629

MICRO Calibration Report

Serial Number: MICRO3
 Tool Model: PROBE
 Performed: Thu Jun 17 05:48:35 2010

Caliper Calibration: Gain=2.969 Offset=-4.105

	Low Cal	High Cal
References	8.375	13.250
Readings	3.395	5.037

1.5" Calibration: Gain=291.940 Offset=-2.025

	Low Cal	High Cal
References	0.000	20.000
Readings	0.006	0.223

2" Calibration: Gain=290.050 Offset=-2.999

References
Readings

Low Cal
0.000
0.009

High Cal
20.000
0.177

Gamma Ray Calibration Report

Serial Number: GR6
Tool Model: OPEN
Performed: Tue Nov 10 08:32:36 2009

Calibrator Value: 150.0 GAPI

Background Reading: 0.0 cps
Calibrator Reading: 276.0 cps

Sensitivity: 0.5535 GAPI/cps