



MIDWEST SURVEYS
 LOGGING - PERFORATING - CASING LOG SERVICES
 P.O. Box 68, Osawatomie, KS 66064
 913 / 755 - 2128

GAMMA RAY / NEUTRON / CCL

File No. _____

Company **Harcon Energy, LLC**

Well **Remer "2" No. HI-11**

Field **Neosho Falls - Leroy**

County **Coffey** State **Kansas**

Location **1835' FSL & 1970' FEL**

Other Services **Perforate**

Sec. 28 Twp. 22S Rge. 16E Elevation 1001'

Permament Datum **GL** K.B. NA

Log Measured From **GL** D.F. NA

Drilling Measured From **GL** G.L. 1001'

Date **05-06-2014**

Run Number **One**

Depth Driller **10770.0**

Depth Logger **10541.2**

Bottom Logged Interval **1053.2**

Top Log Interval **20.0**

Fluid Level **Full**

Type Fluid **Water**

Density / Viscosity **NA**

Salinity / PFM Cl **NA**

Max. Recorded Temp **NA**

Estimated Cement Top **0.0**

Equipment No. **107** Location **Osawatomie**

Recorded By **Steve Vandisch**

Witnessed By **Harvey Frans**

BOREHOLE RECORD

RUN No. **BIT** FROM TO SIZE WGT. FROM TO

One **12.25"** 0.0 40.0 7.00# 19.0# 0.0 40.0

Two **5.875"** 40.0 10700.0 2.875# 6.5# 0.0 10800.0

CASING RECORD

TO 40.0

TO 10800.0

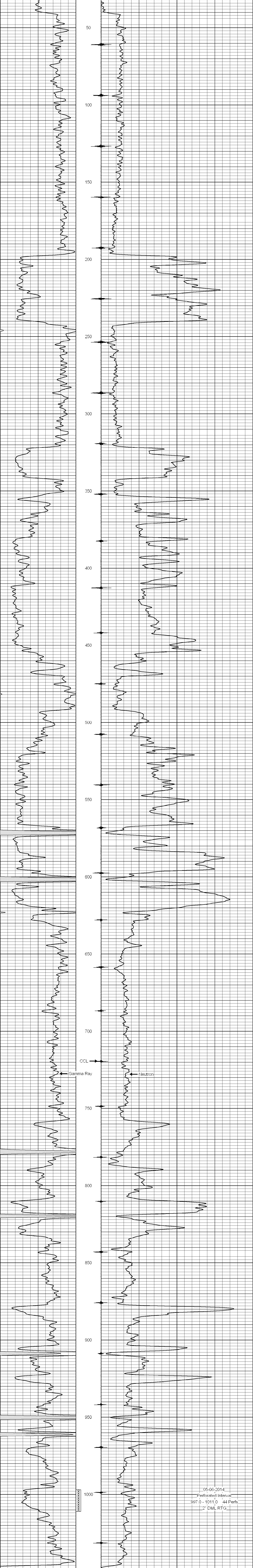
<<< Fold Here >>>

All interpretations are opinions based on inferences from electrical or other measurements and we cannot and do not guarantee the accuracy or correctness of any interpretation, and we shall not, except in the case of gross or willful negligence on our part, be liable or responsible for any loss, costs, damages, or expenses incurred or sustained by anyone resulting from any interpretation made by any of our officers, agents or employees. These interpretations are also subject to our general terms and conditions set out in our current Price Schedule.

Comments

Drilling Contractor :
Finney Drilling Company

Database File: remer2 11hi.db
 Dataset Pathname: pass1
 Presentation Format: gr-n-ccl
 Dataset Creation: Tue May 06 14:04:41 2014 by Log SCH 111116
 Charted by: Depth in Feet scaled 1:240



05-06-2014
 Perforated Interval
 997.0 - 1011.0 44 Perfs
 2" DML RTG