



**GAMMA RAY
NEUTRON
COMPLETION LOG**

Company VERDE OIL COMPANY
 Well E. DAVIDSON #18
 Field OWL CREEK
 County WOODSON
 State KANSAS

Company VERDE OIL COMPANY
 Well E. DAVIDSON #18
 Field OWL CREEK
 County WOODSON State KANSAS

Location: API # : 15-207-28792-00-00
 2420' FSL & 1100' FEL
 NW NW NE SE
 SEC 6 TWP 25S RGE 16E
 Permanent Datum GL Elevation 1002' EST
 Log Measured From GL
 Drilling Measured From GL
 Other Services
 Elevation
 K.B.
 D.F.
 G.L. 1002' EST.

Date	1-7-14
Run Number	1 NW
Depth Driller	
Depth Logger	1033.3'
Top Log Interval	12.3'
Bottom Logged Interval	1033.3'
Fluid Level	FULL
Type Fluid	WATER
Production Casing	2 7/8" @ TD @
Max. Recorded Temp.	
Estimated Cement Top	
Calculated Cement Top	
Amount & Type Cement	
Amount & Type Admix	
Drilling Contractor	
Equipment Number	109
Location	
Recorded By	HALL, R.
Witnessed By	DALE, J.

<<< Fold Here >>>

All interpretations are opinions based on inferences from electrical or other measurements and we cannot and do not guarantee the accuracy or correctness of any interpretation, and we shall not, except in the case of gross or willful negligence on our part, be liable or responsible for any loss, costs, damages, or expenses incurred or sustained by anyone resulting from any interpretation made by any of our officers, agents or employees. These interpretations are also subject to our general terms and conditions set out in our current Price Schedule.

Comments

THANK YOU

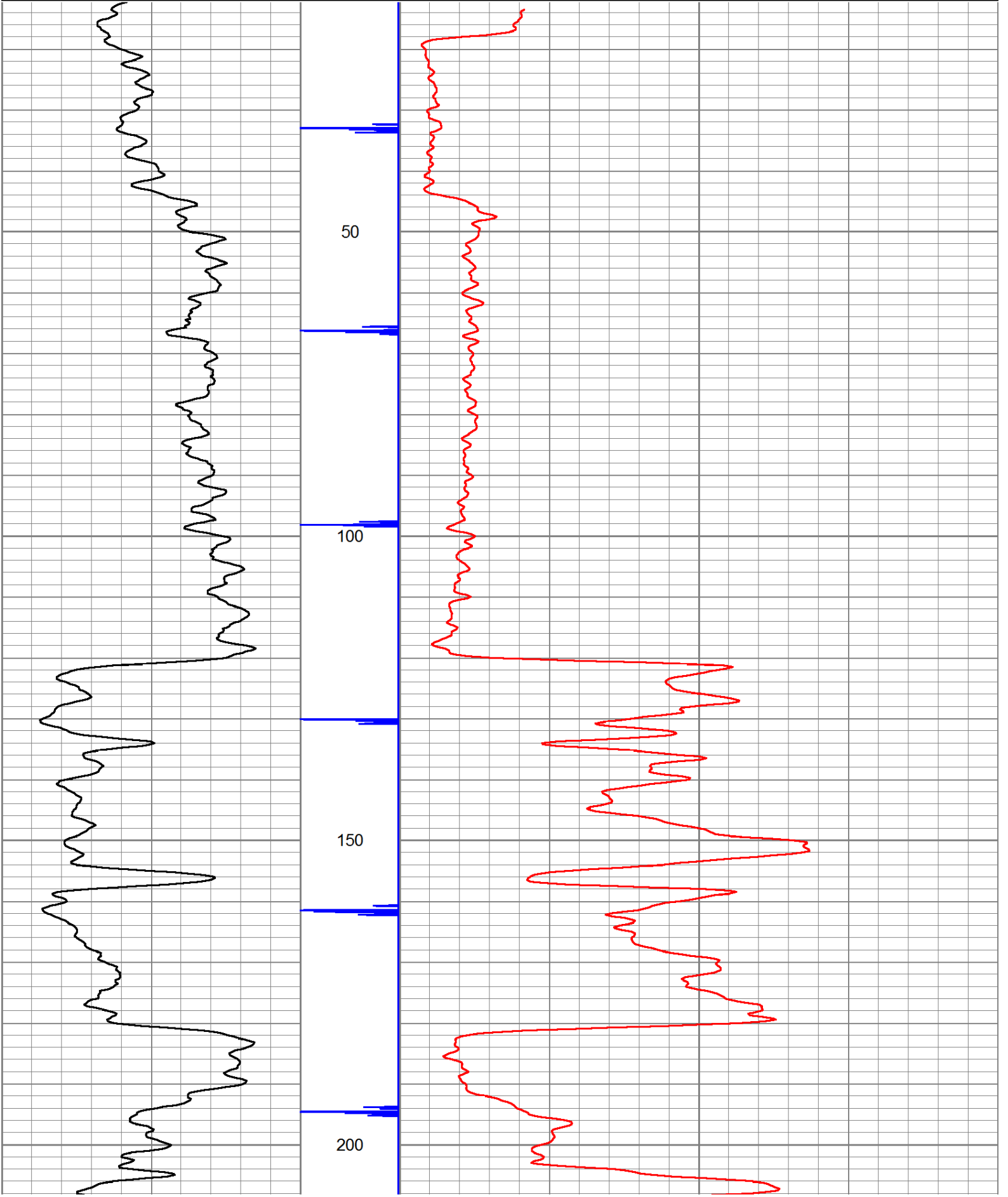
Sensor	Offset (ft)	Schematic	Description	Len (ft)	OD (in)	Wt (lb)

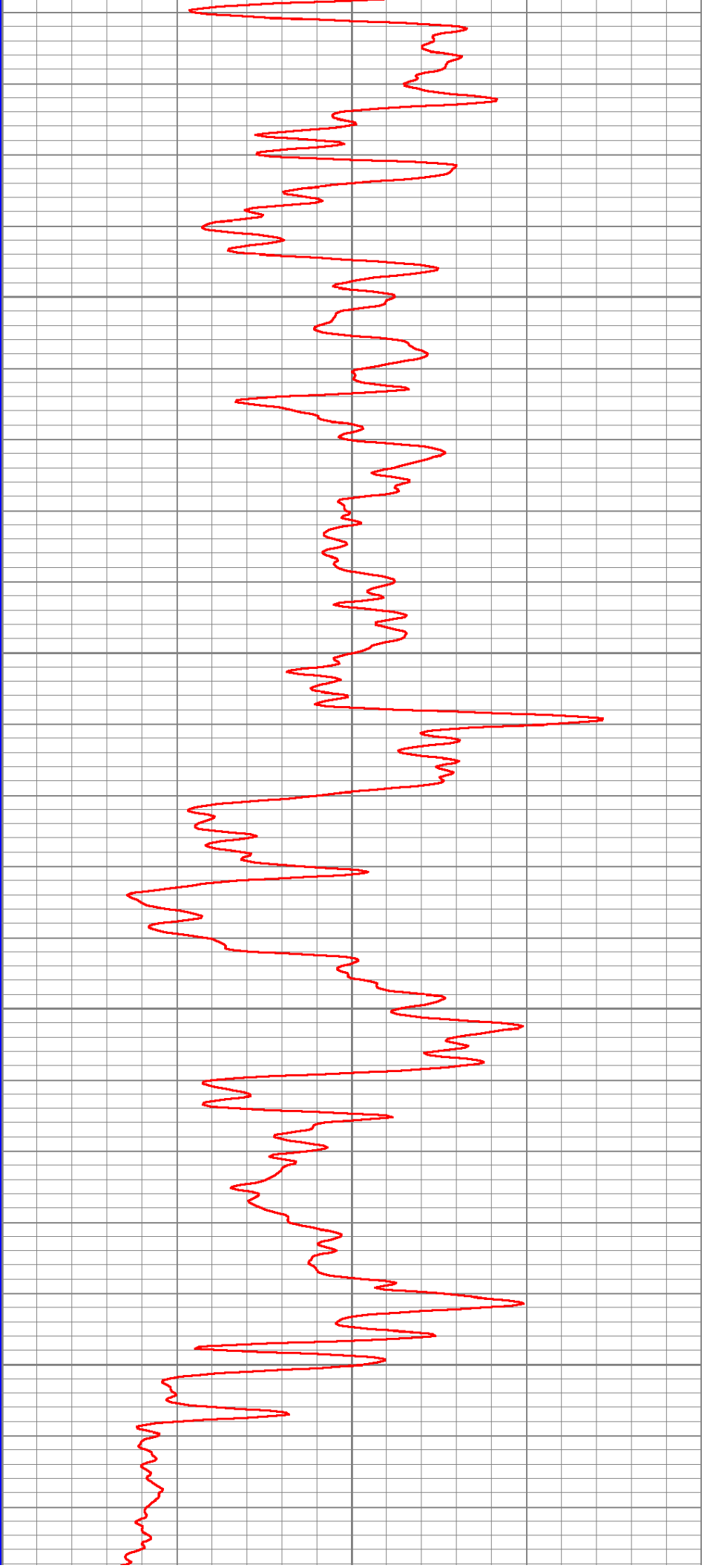
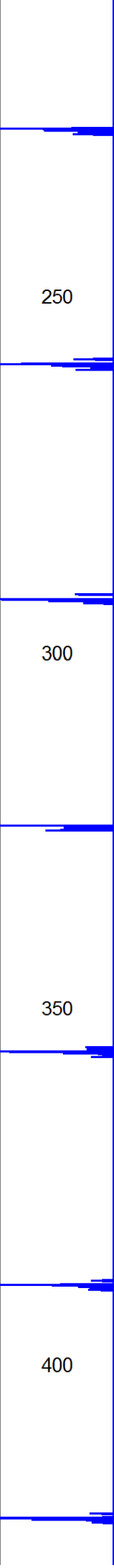
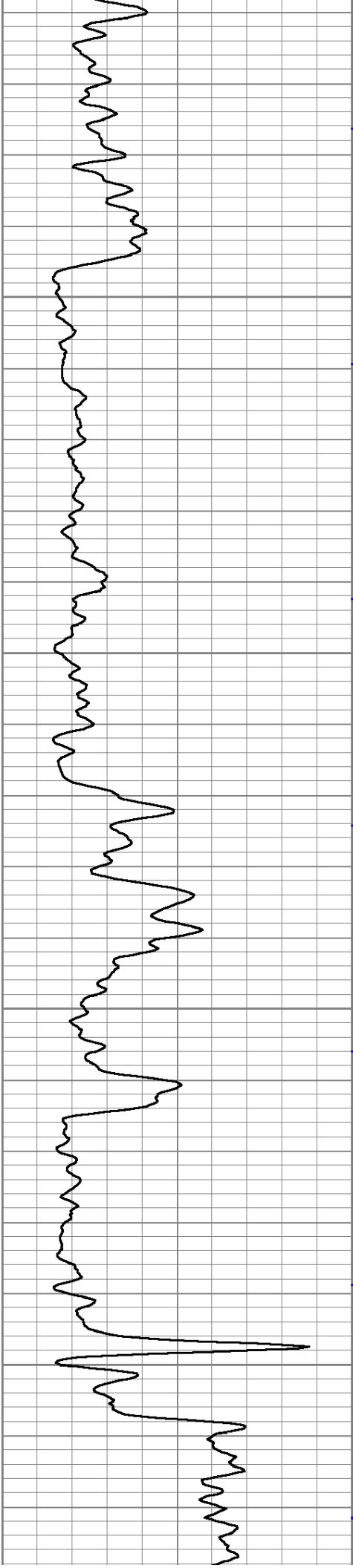
GR	7.59		GR-TITAN_169 (TIT169_001) Titan 1 11/16" Gamma Ray	4.75	1.69	20.00
CCL	5.05		CCL-TITAN_169 (TIT169) Titan 1 11/16" Logging CCL	1.83	1.69	7.50
NEU	0.63		NEU-TITAN (TIT801) TITAN 1 11/16" Neutron	4.33	1.69	25.00

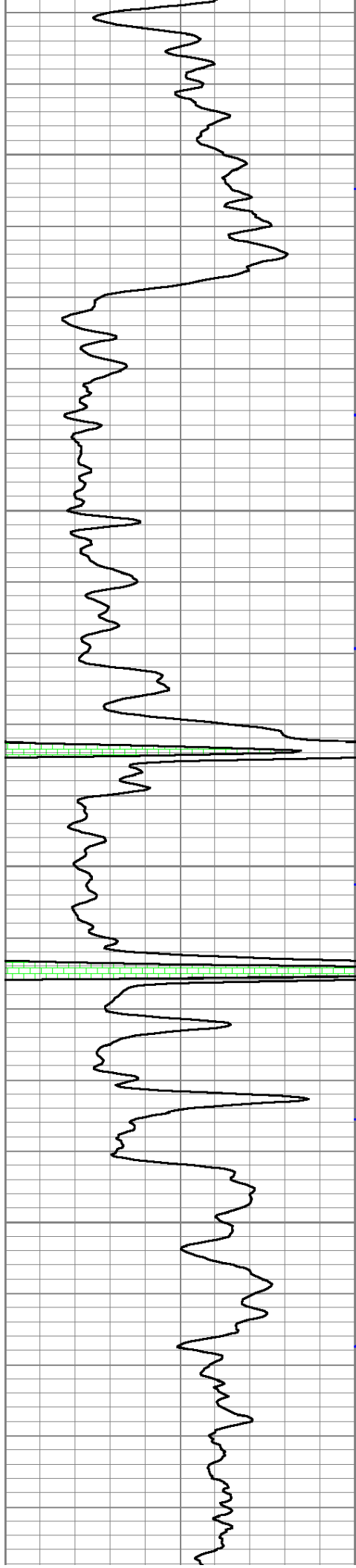
Dataset: e davidson #18.db: field/well/run1/pass1
 Total Length: 10.92 ft
 Total Weight: 52.50 lb
 O.D.: 1.69 in

Database File: p:\logs\verde oil company\e. davidson #18\e davidson #18.db
 Dataset Pathname: pass1
 Presentation Format: gr-n-ccl

150	gr	300	3	CCLJ.05	150	NEU (cps)	1600
0	GR	150					





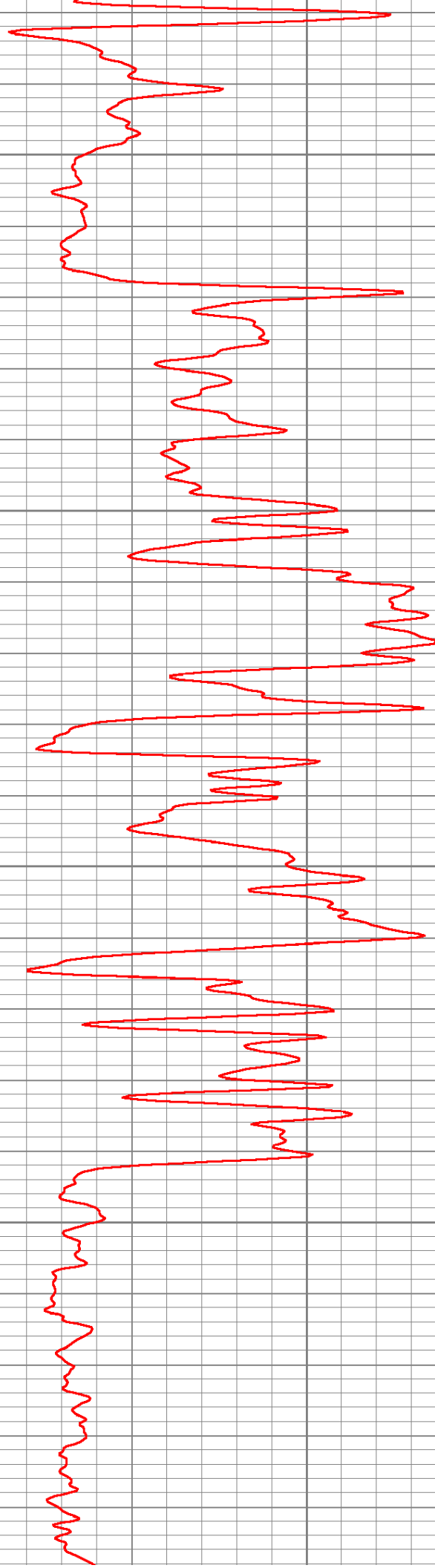


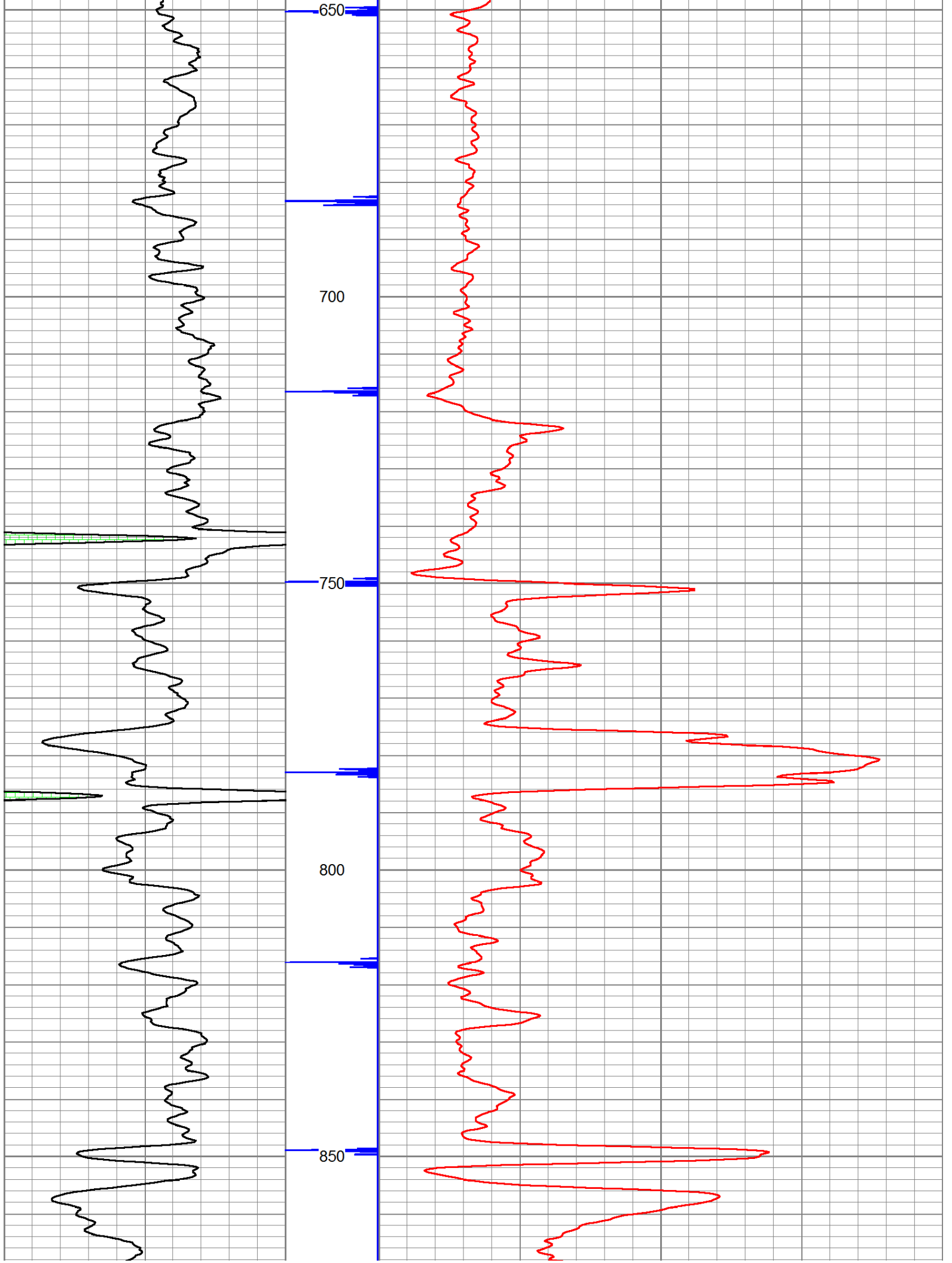
450

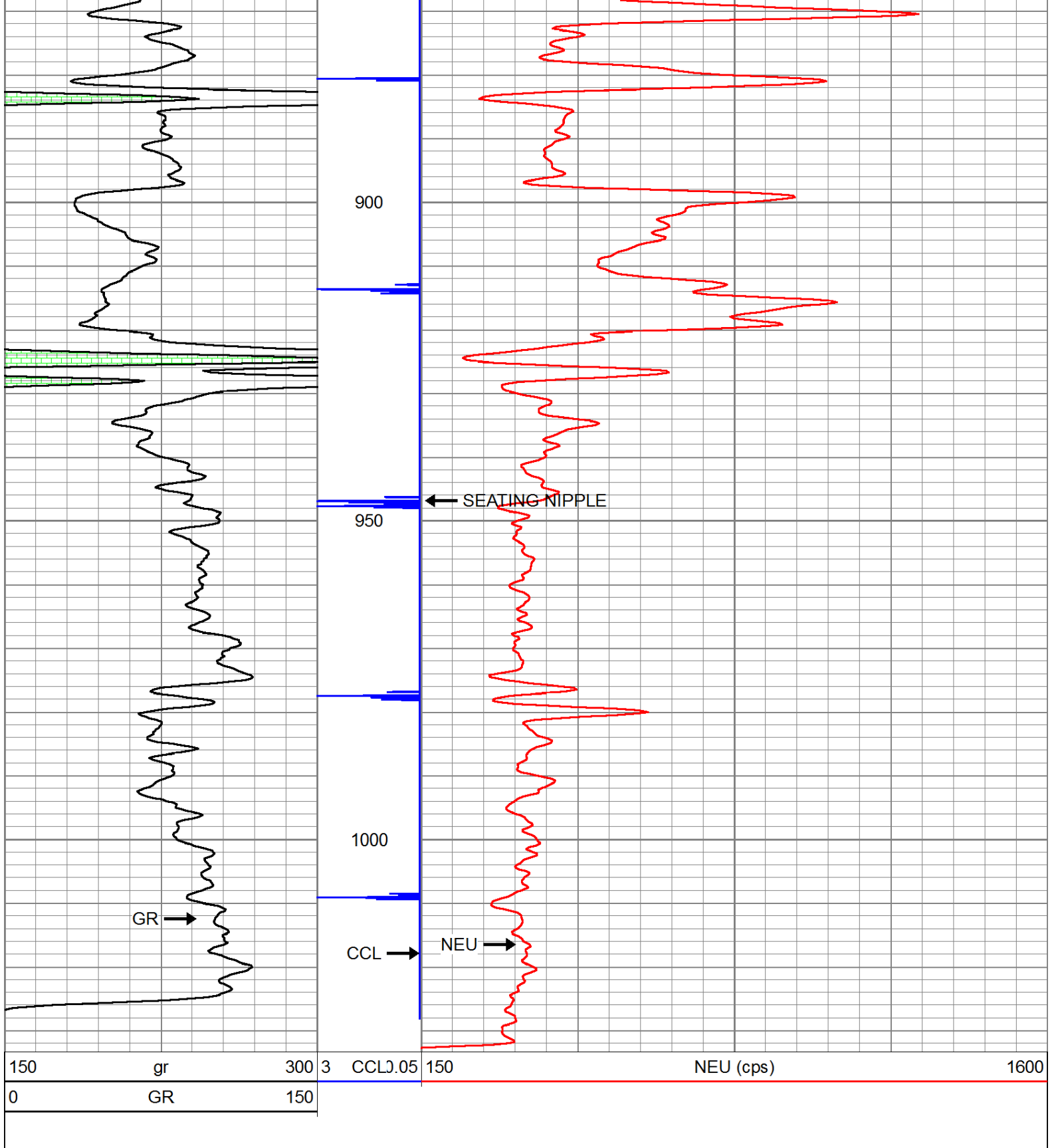
500

550

600







Company	VERDE OIL COMPANY
Well	E. DAVIDSON #18
Field	OWL CREEK
County	WOODSON SEC. 6 TWP. 25S RGE. 16E
State	KANSAS
Date	1-7-14