



Pioneer Energy Services

Borehole Compensated Sonic Log

15-055-22,301-00-00

API No.

Company **American Warrior, Inc.**

Well **O'Brate Finney #1-15**

Field

County **Finney**

State **Kansas**

Location

1,697' FSL & 1,379 FWL

Sec: **15** Twp: **25S** Rge: **31W**

Other Services
CNL/CDL
DIL

Elevation

K.B. 2770
D.F. 2759
G.L. 2759

Permanent Datum Ground Level Elevation 2759
Log Measured From Kelly Bushing 11 Ft. Above Perm. Datum
Drilling Measured From Kelly Bushing

Date **5/19/2014**

Run Number **Two**

Type Log **BHC Sonic**

Depth Driller **5000**

Depth Logger **5000**

Bottom Logged Interval **4989**

Top Logged Interval **1700**

Type Fluid In Hole **Chemical**

Salinity, PPM CL **2500**

Density **9.55**

Level **Full**

Max. Rec. Temp. F **126**

Operating Rig Time **5 Hours**

Equipment -- Location **108 Hays**

Recorded By **J. Long**

Witnessed By **Kevin Timson**

Borehole Record

Casing Record

Run No.	Bit	From	To	Size	Wgt.	From	To
1	12.25	00	1701	8.625	24#	00	1701
2	7.875	1701	5000				

<<< Fold Here >>>

All interpretations are opinions based on inferences from electrical or other measurements and we cannot and do not guarantee the accuracy or correctness of any interpretation, and we shall not, except in the case of gross or willful negligence on our part, be liable or responsible for any loss, costs, damages, or expenses incurred or sustained by anyone resulting from any interpretation made by any of our officers, agents or employees. These interpretations are also subject to our general terms and conditions set out in our current Price Schedule.

Comments

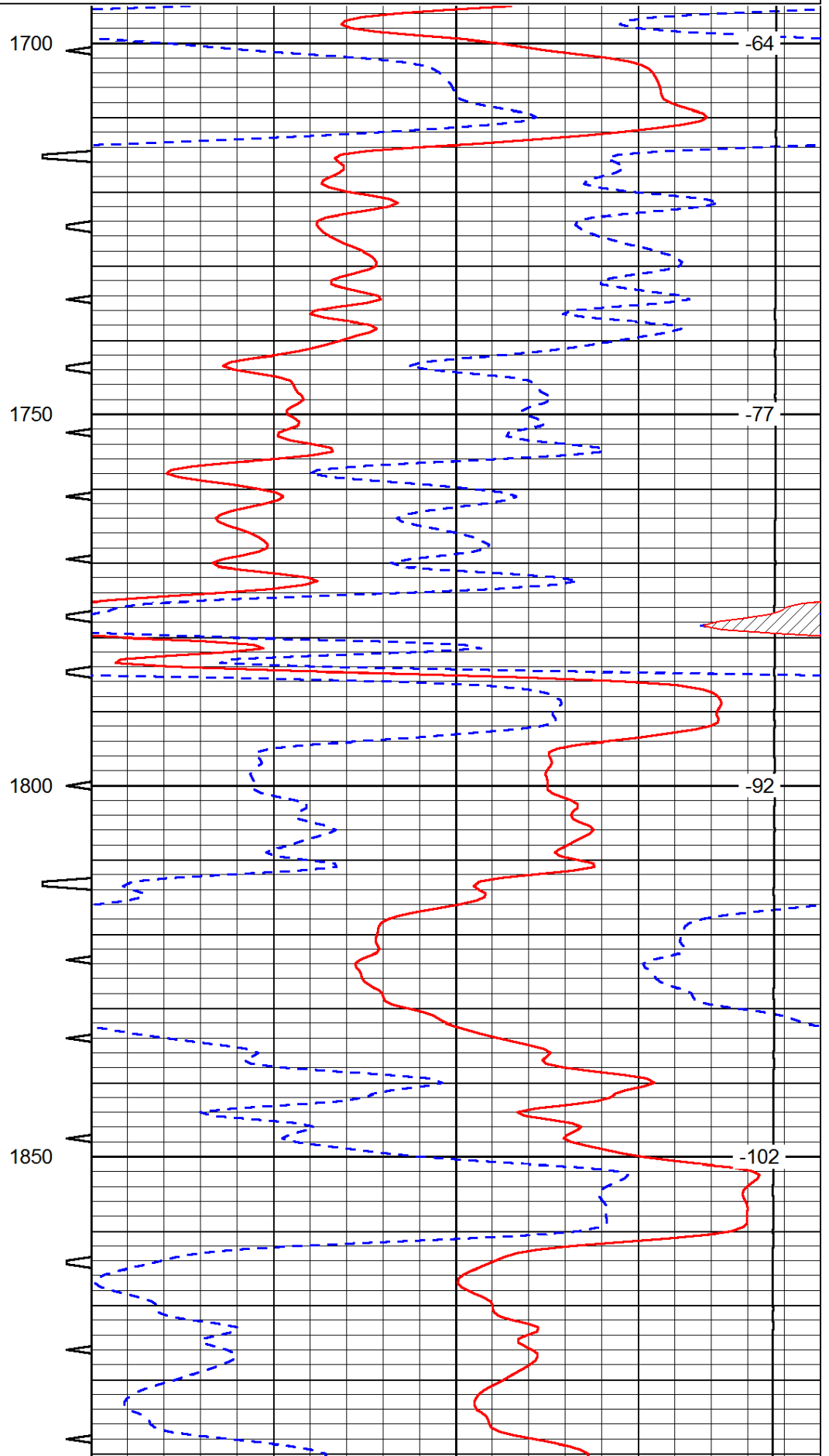
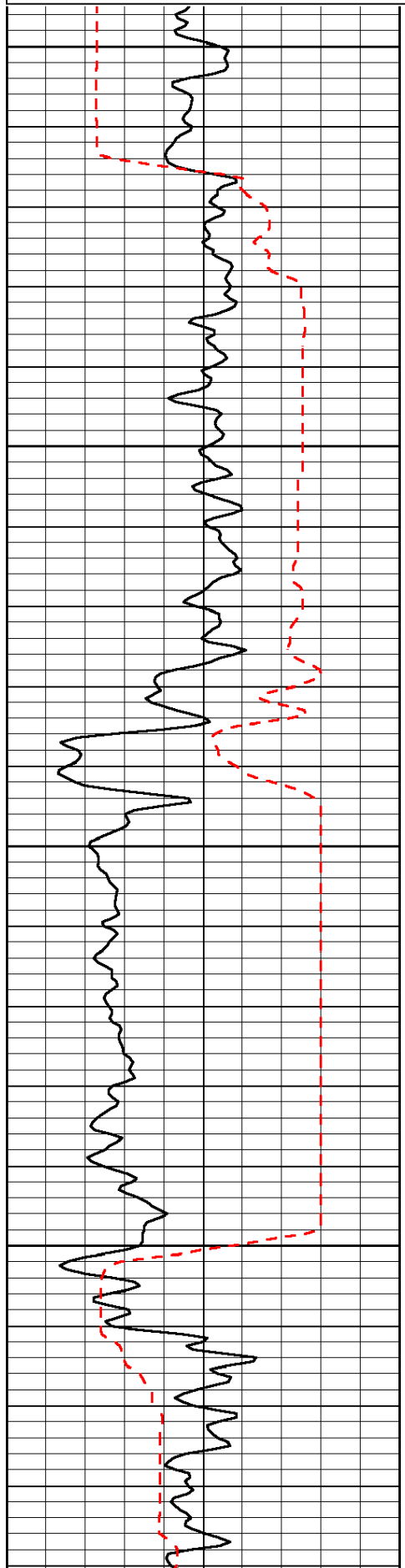
Thank you for using Pioneer Energy Services
www.pioneerres.com
785 625 3858

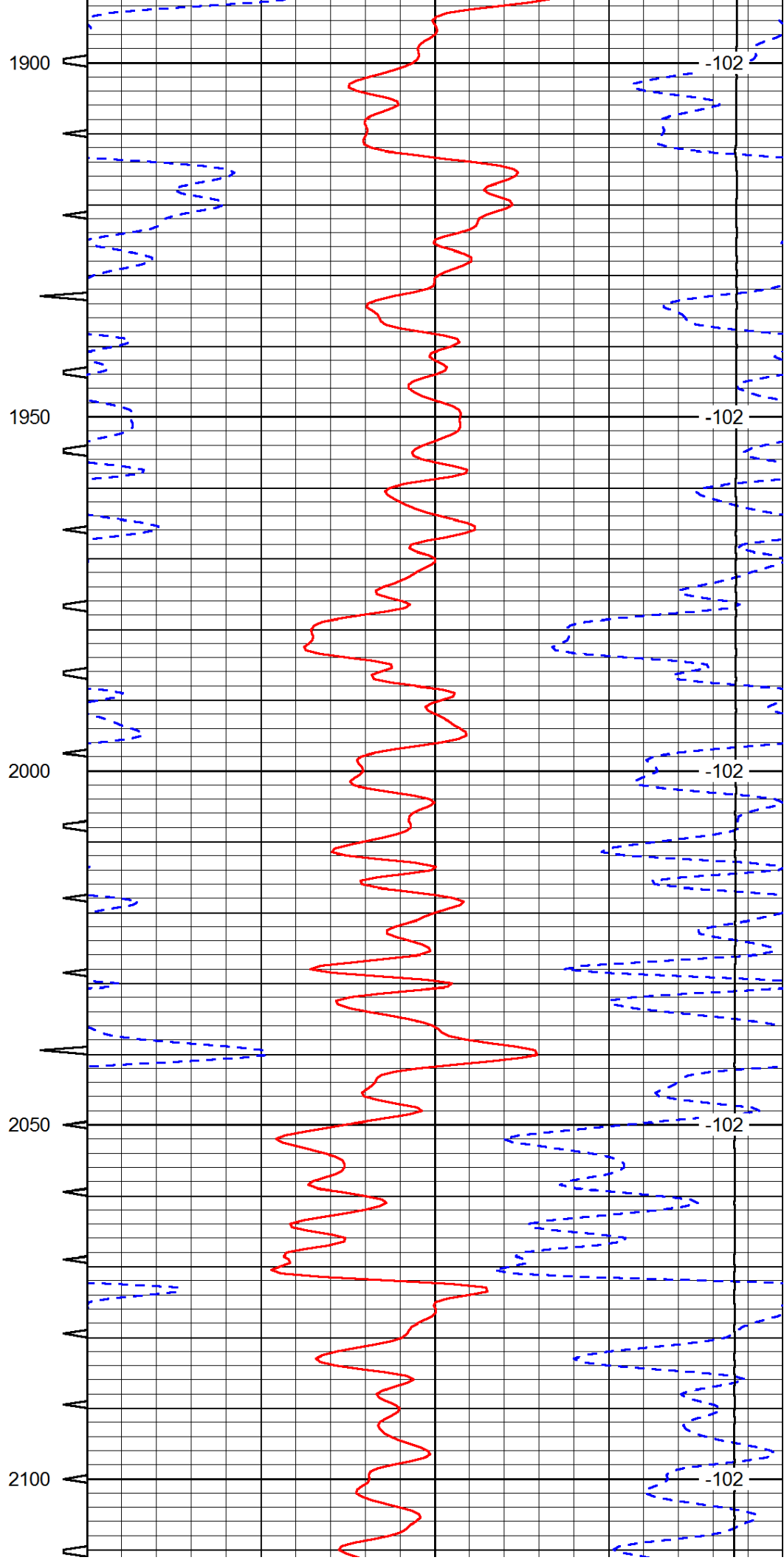
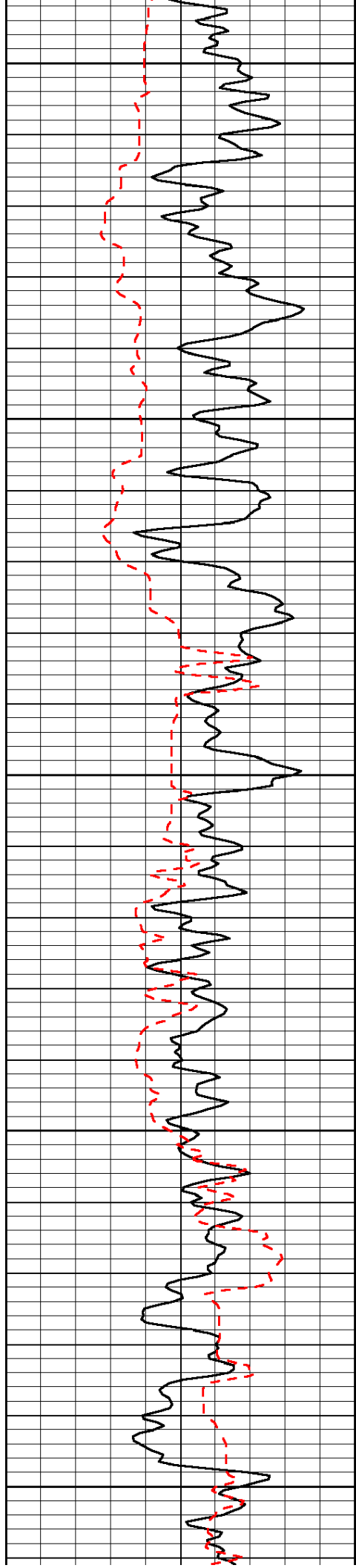
Pierceville, 9/10 Southwest on Pierceville Road to Beach Road, 2 West, 1/3 North,
East Into

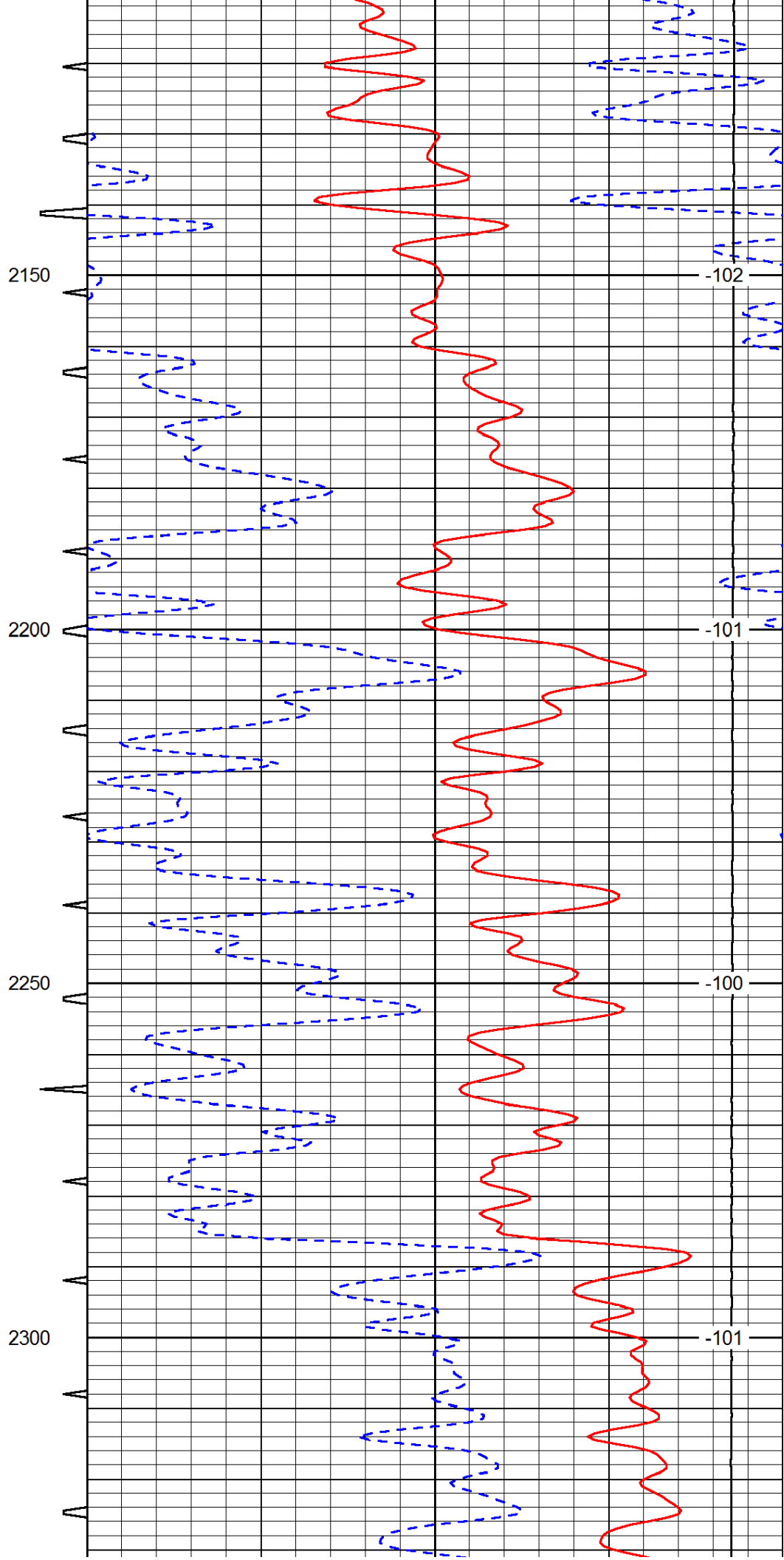
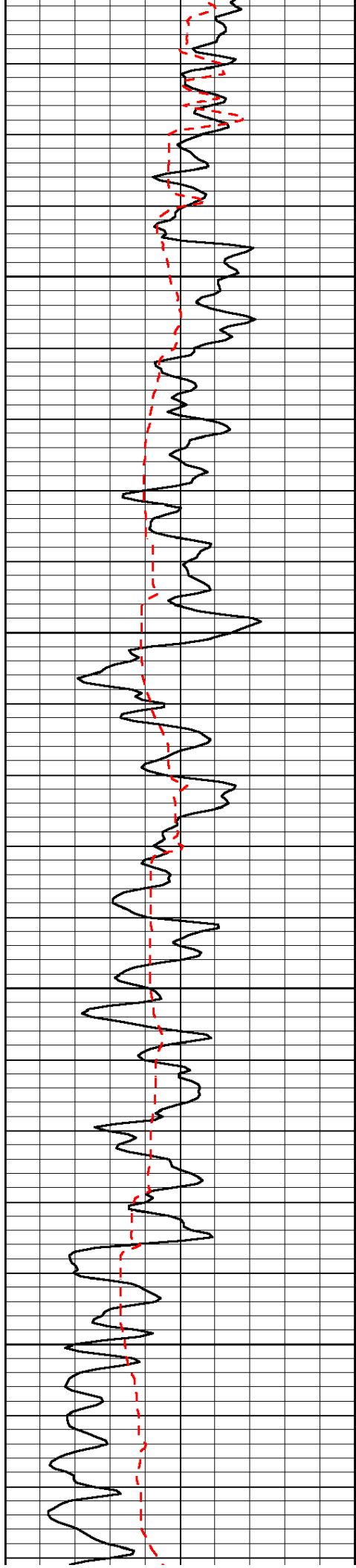
Database File: c:\warrior\data\amwar_o'brate finney #1-15\amwarrior_obratefinney_1-15hd.db
 Dataset Pathname: dil/awstck
 Presentation Format: sonic
 Dataset Creation: Mon May 19 00:01:23 2014
 Charted by: Depth in Feet scaled 1:240

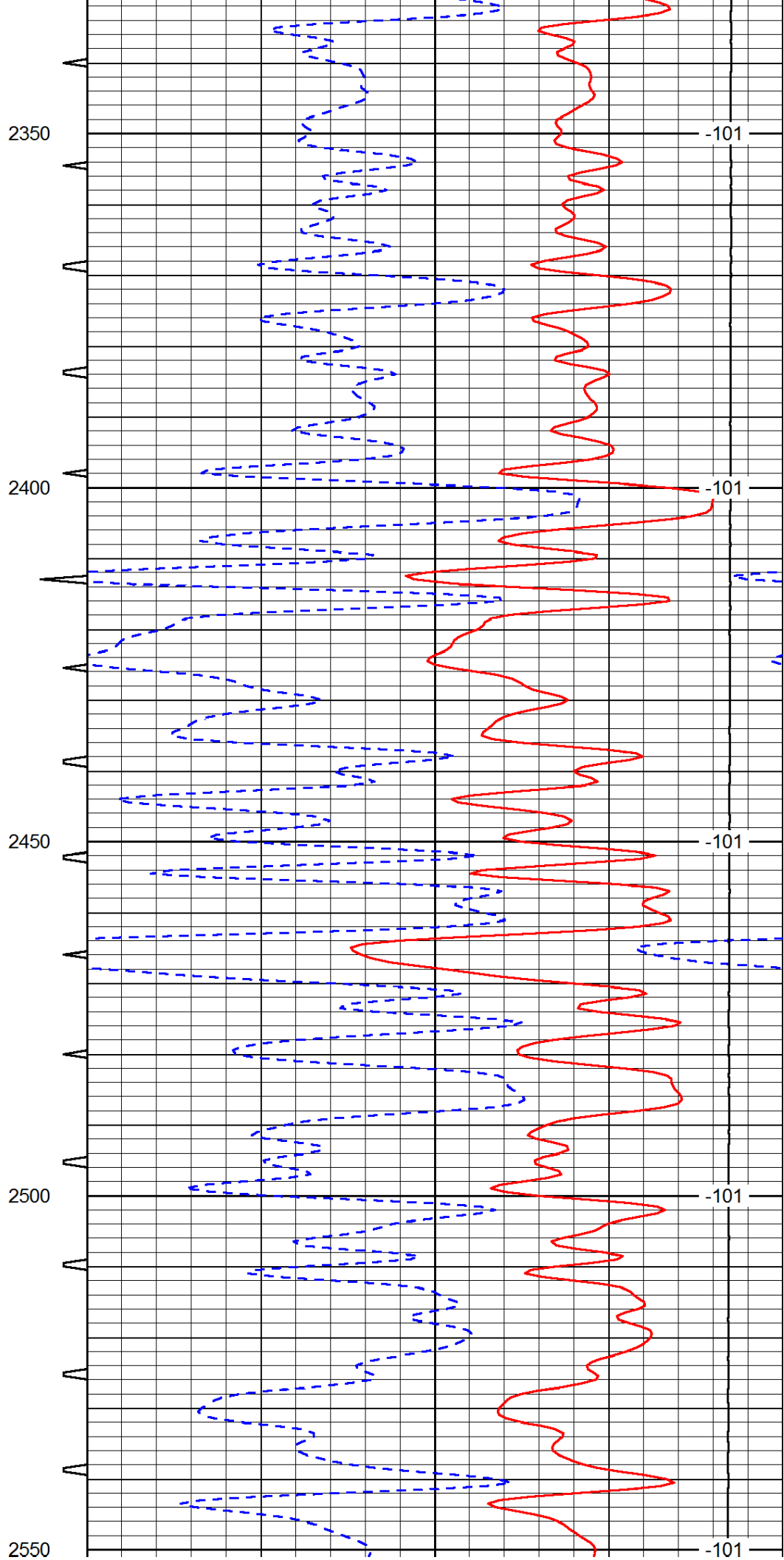
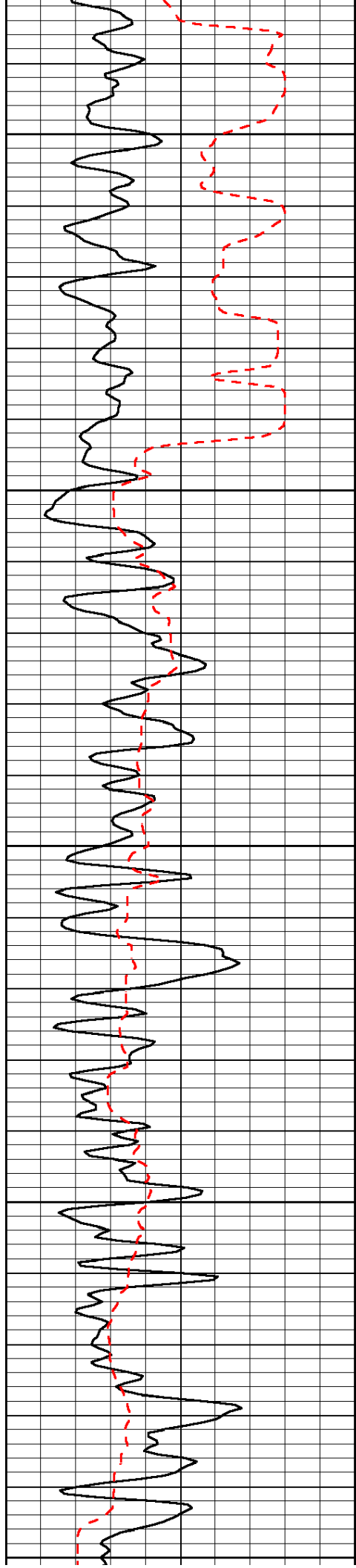
0	Gamma Ray	150	Sonic Int	140	Delta Time (usec/ft)	40
150	Gamma Ray	300	5	0	SPOR	-10
6	Caliper (GAPI)	16		15000	LTEN (lb)	0

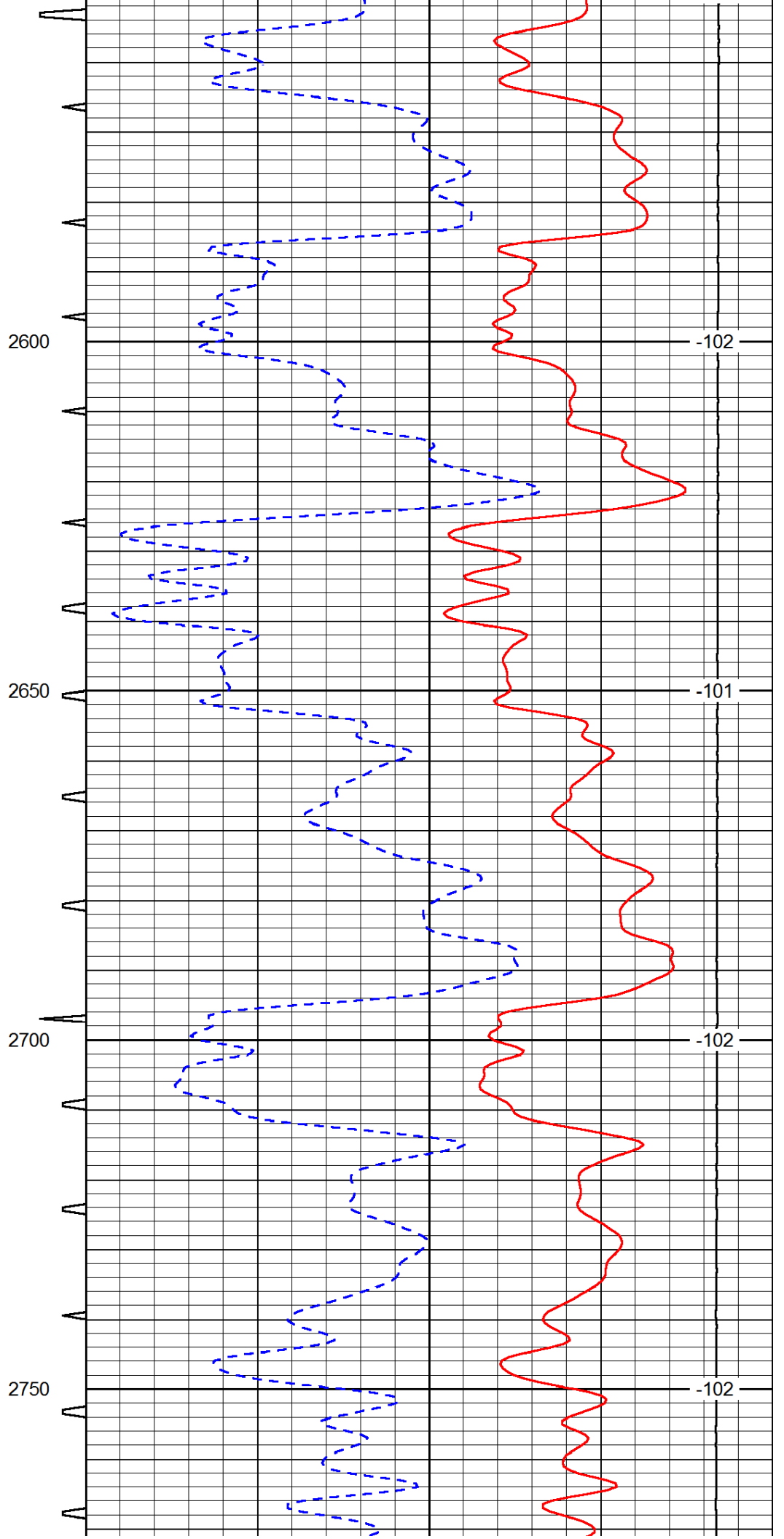
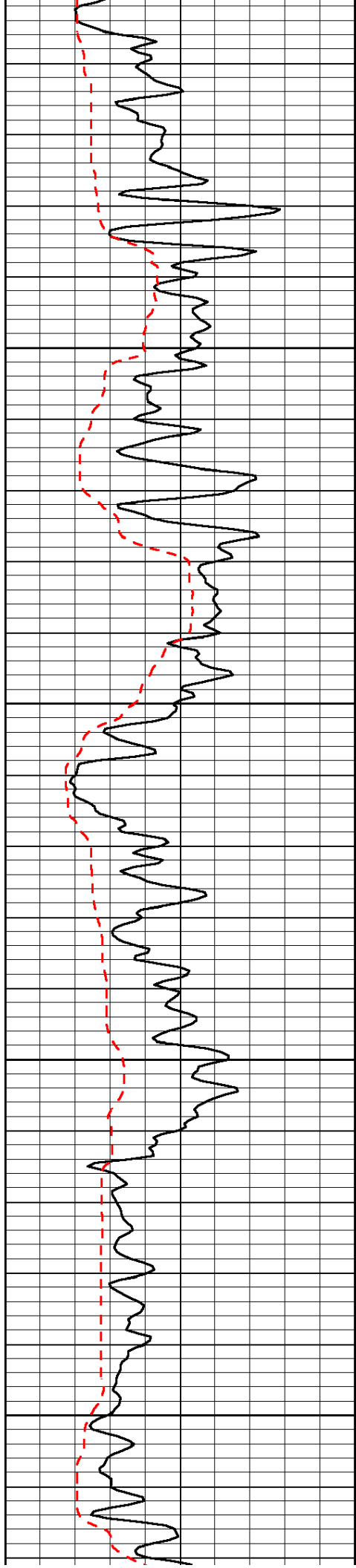
LSPD

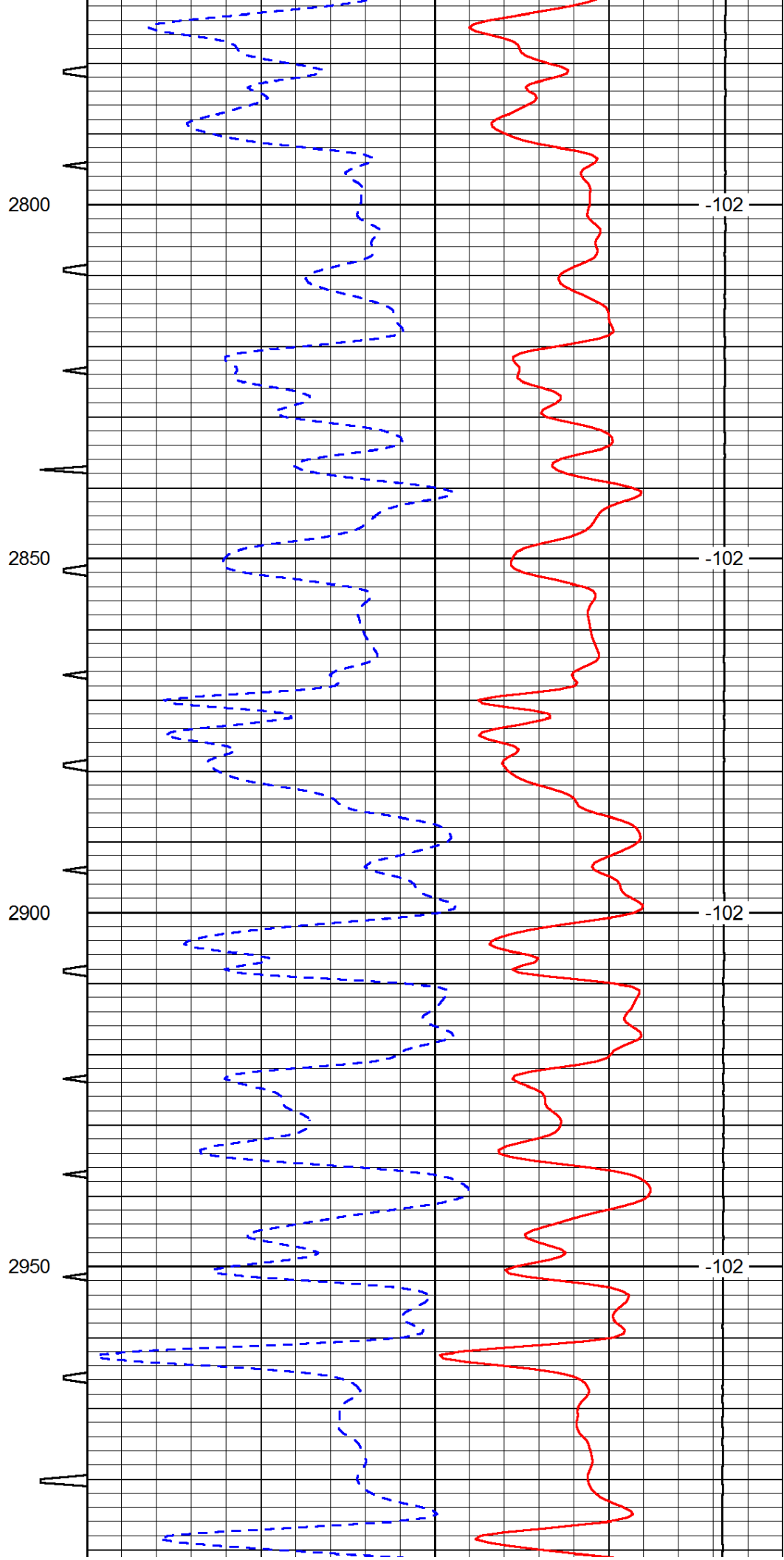
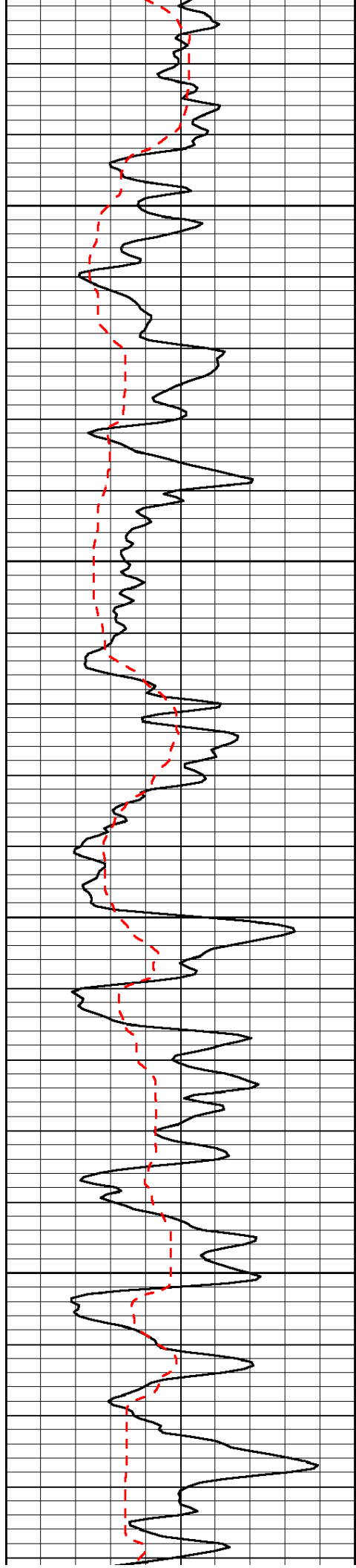


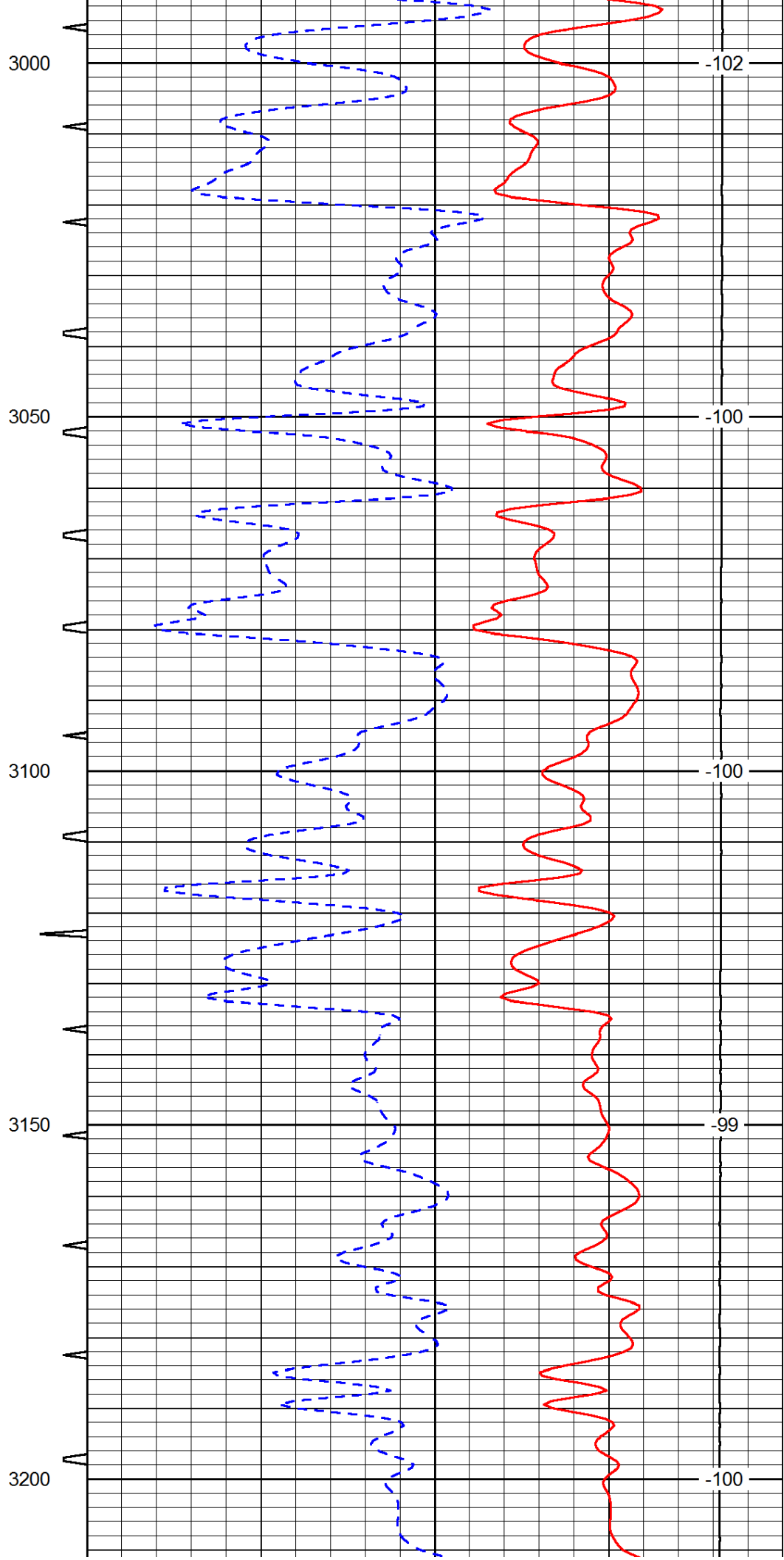
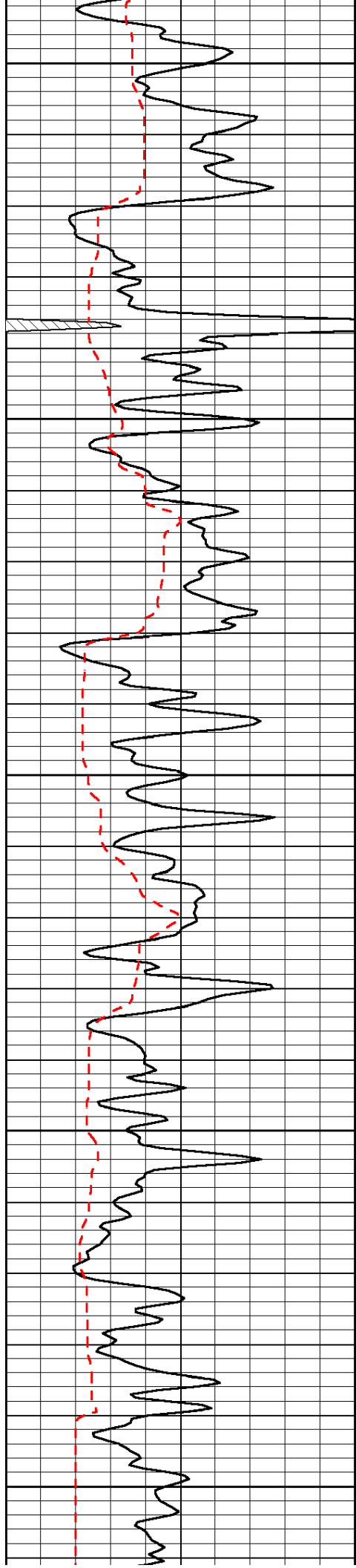


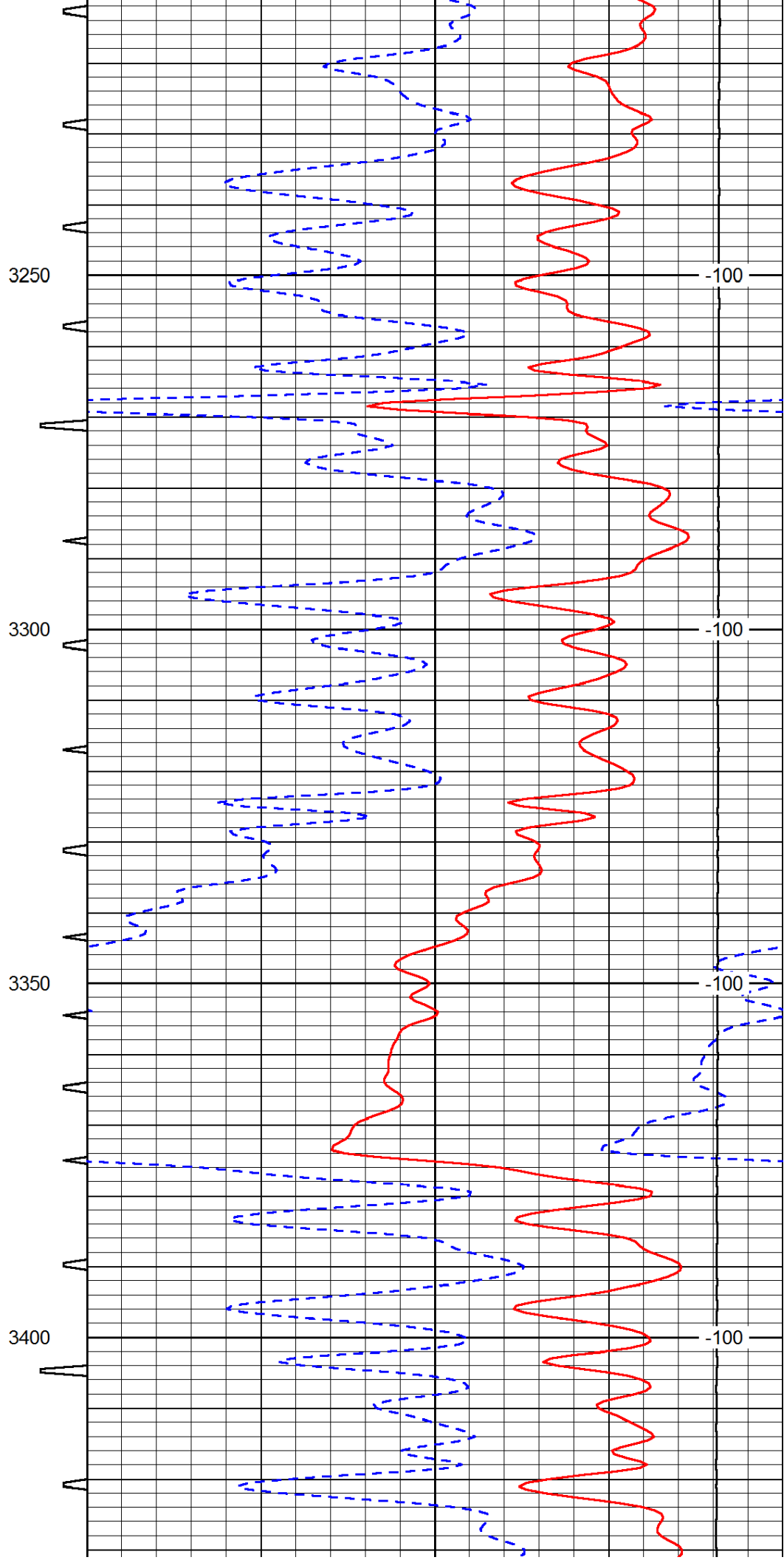
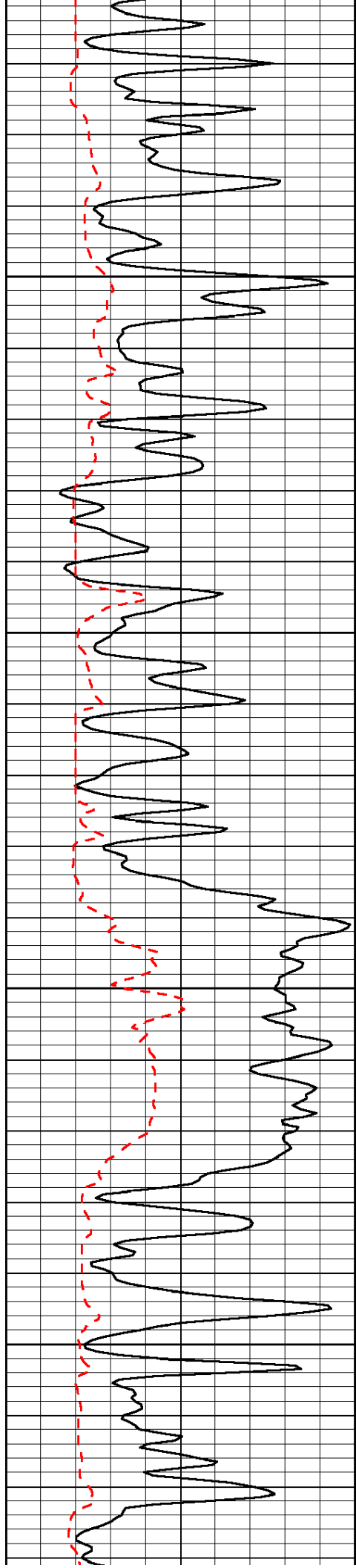


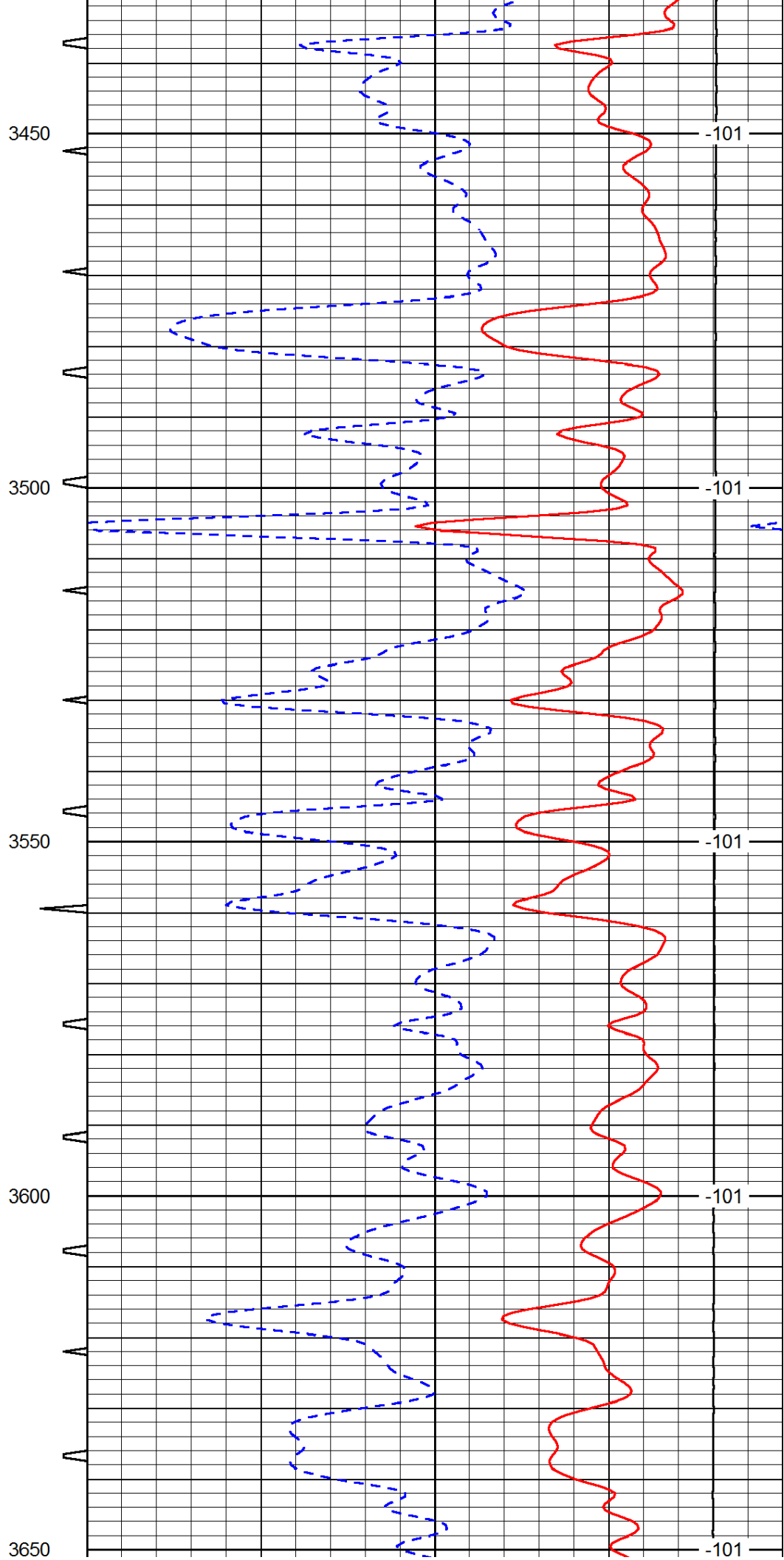
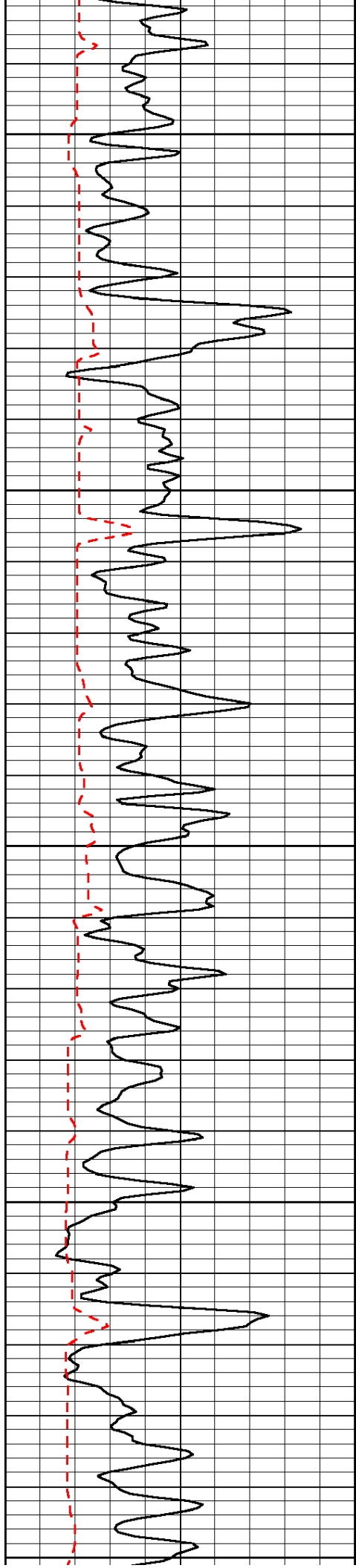


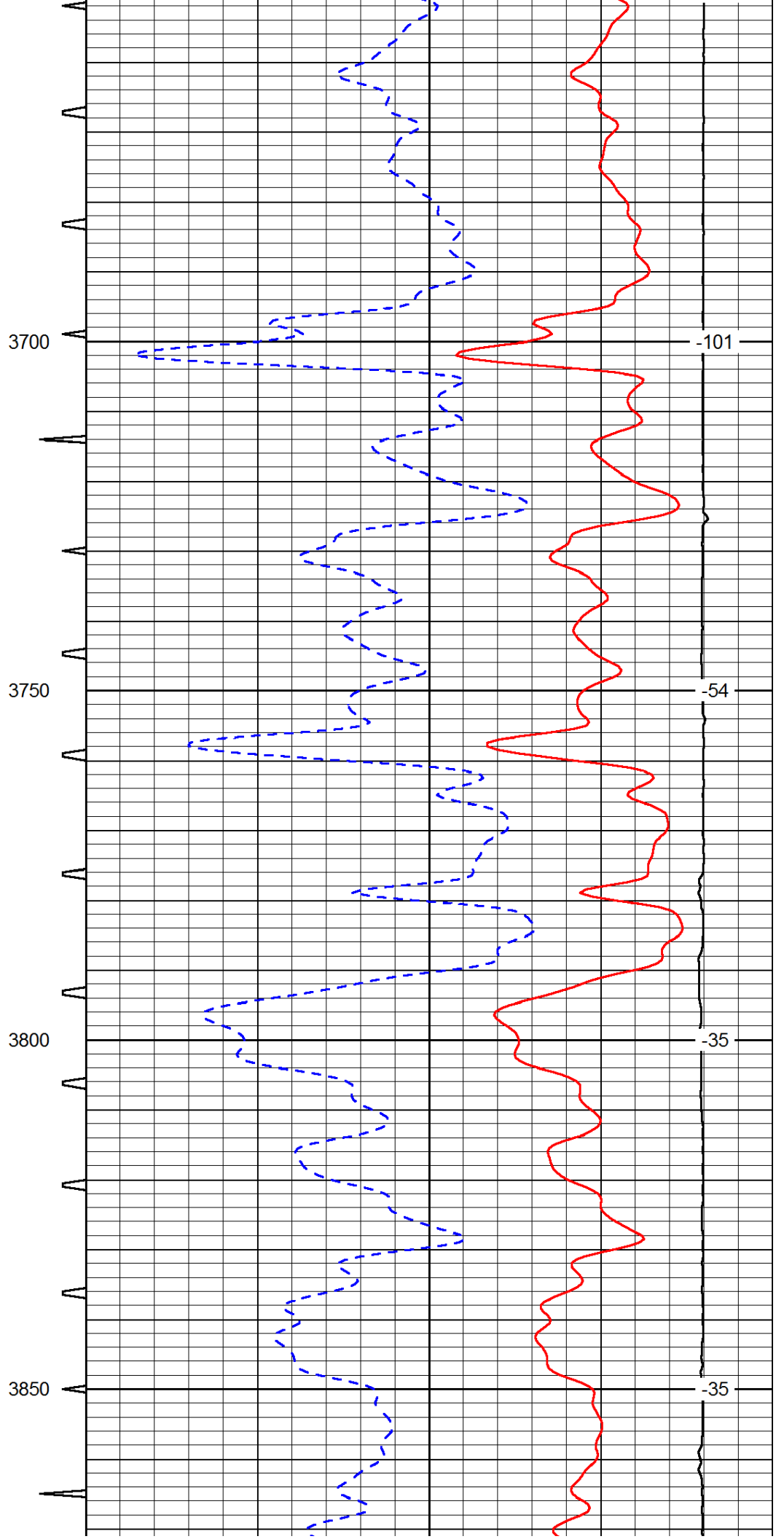
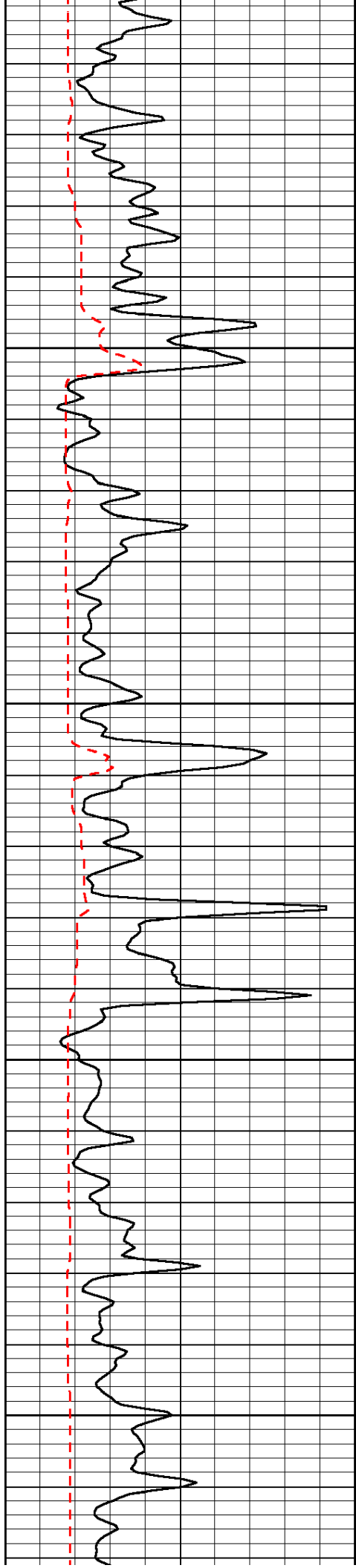


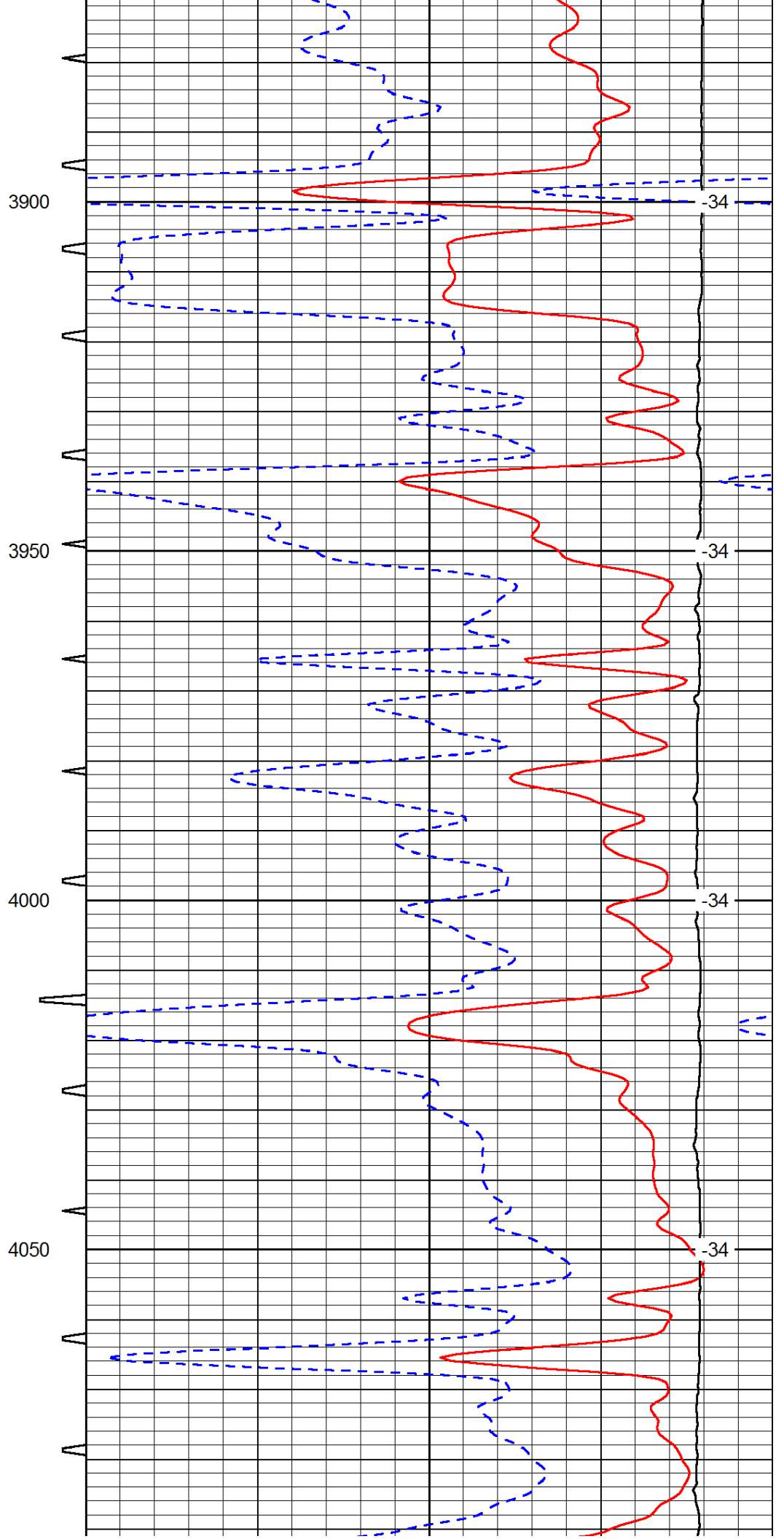
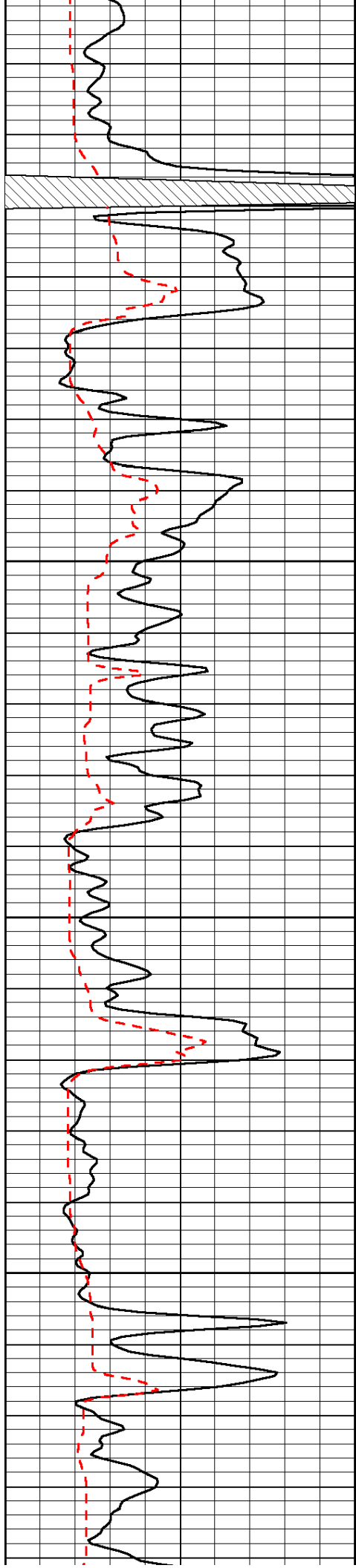


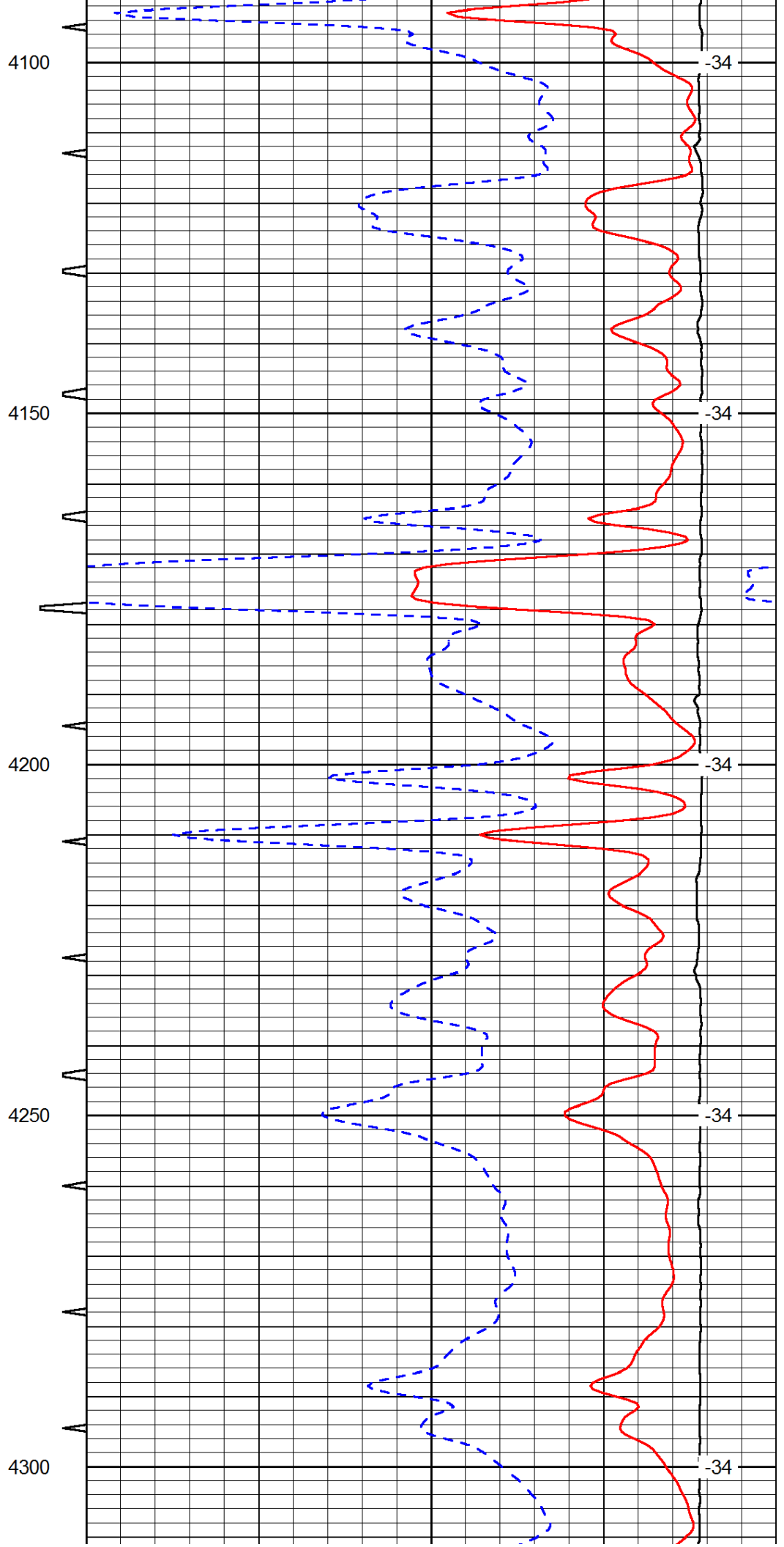
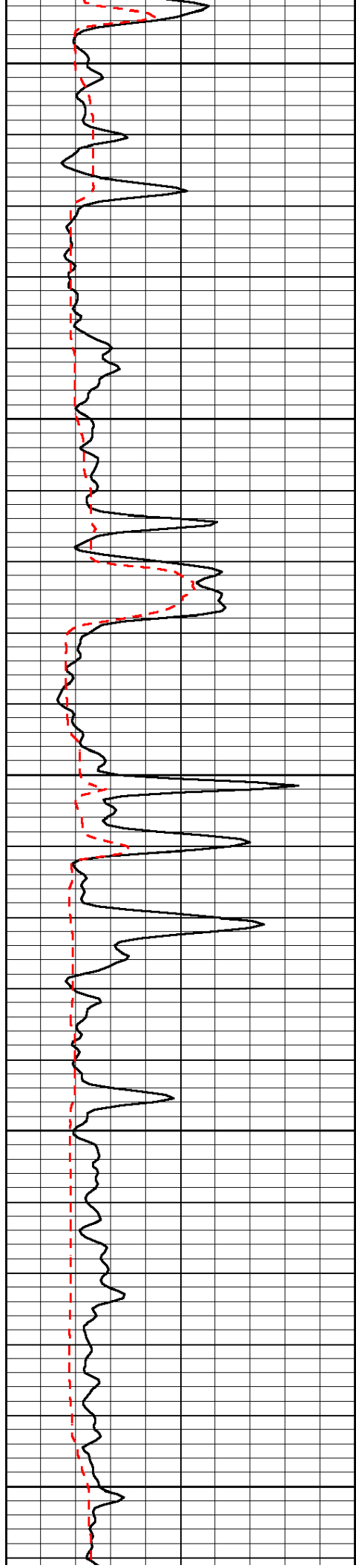


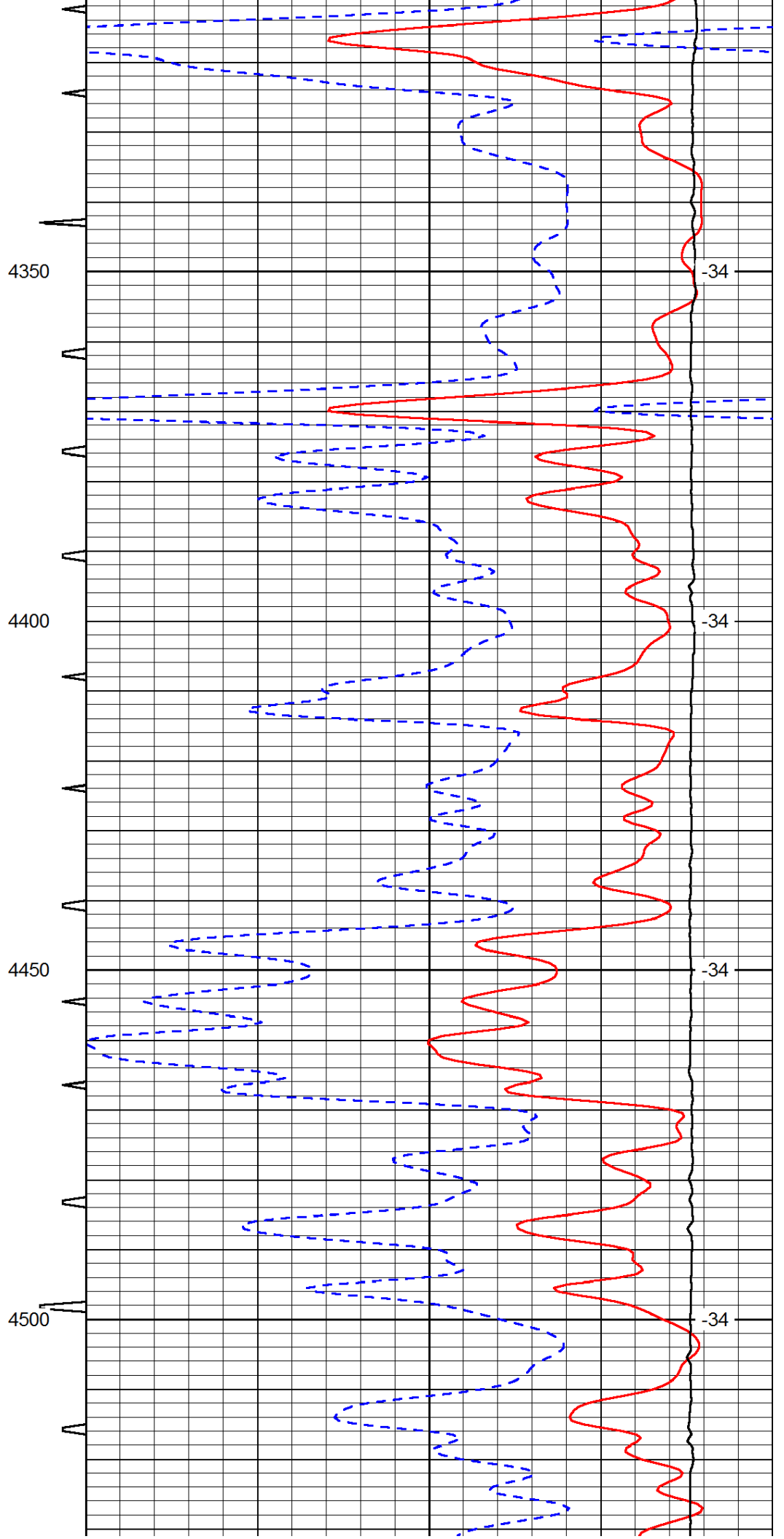
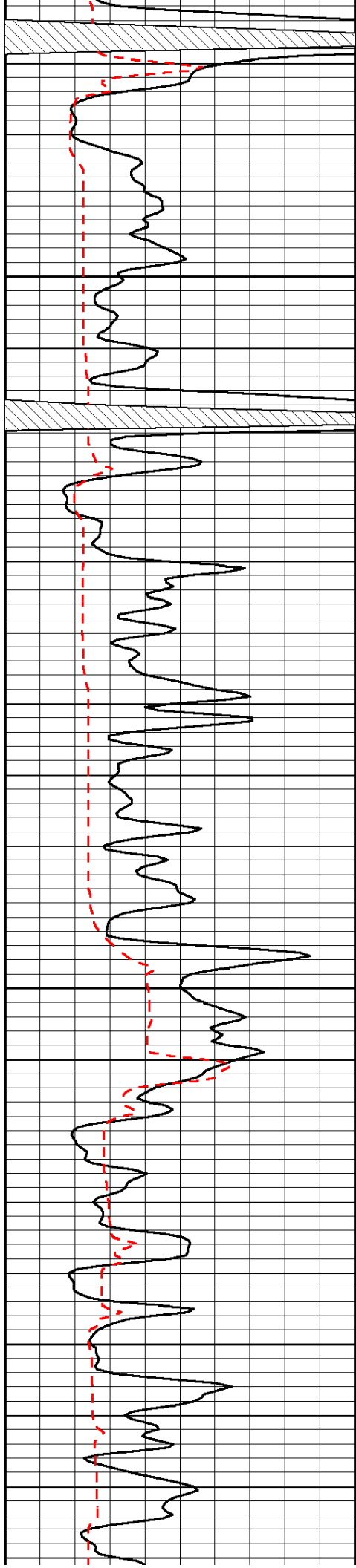


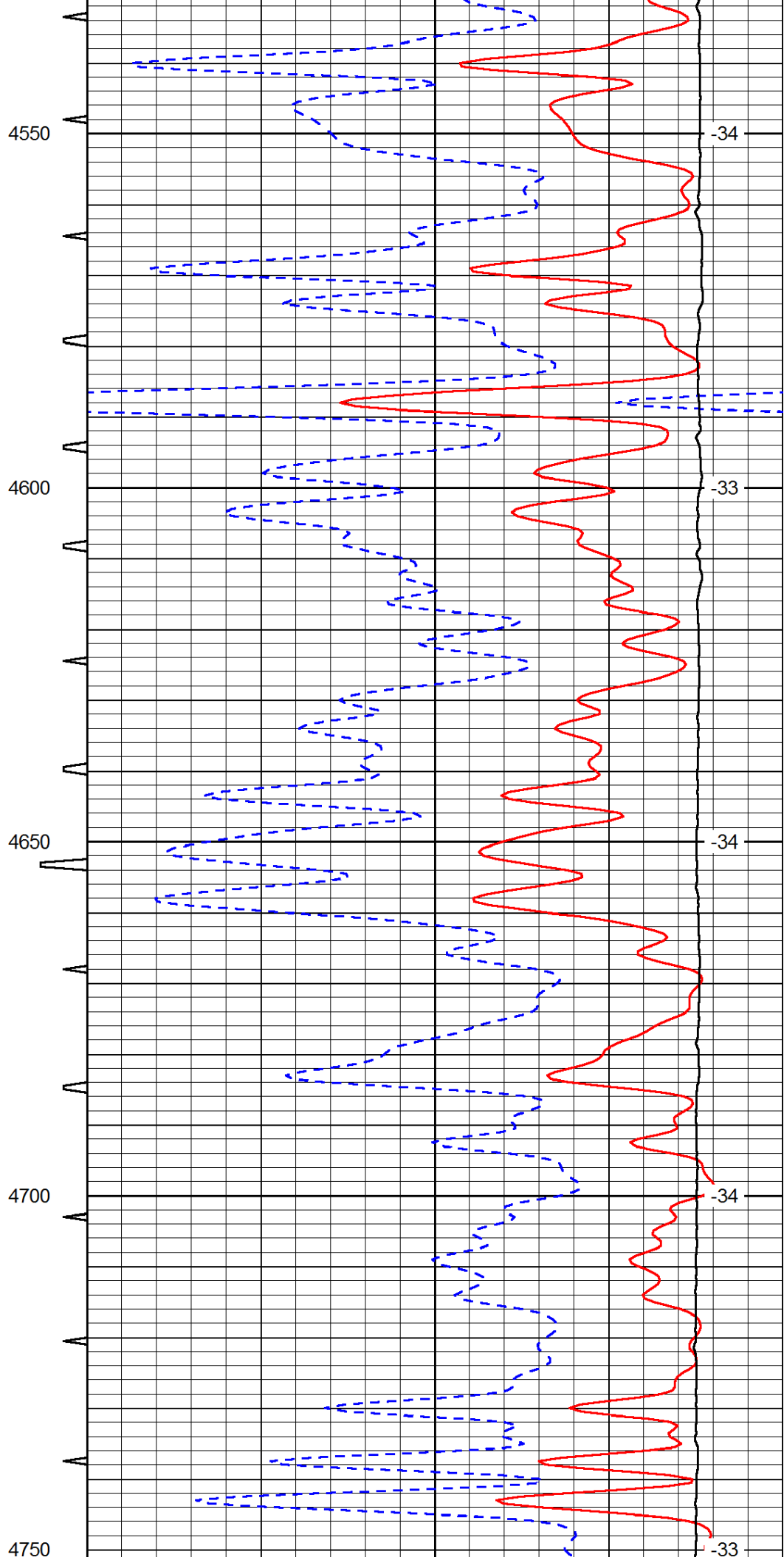
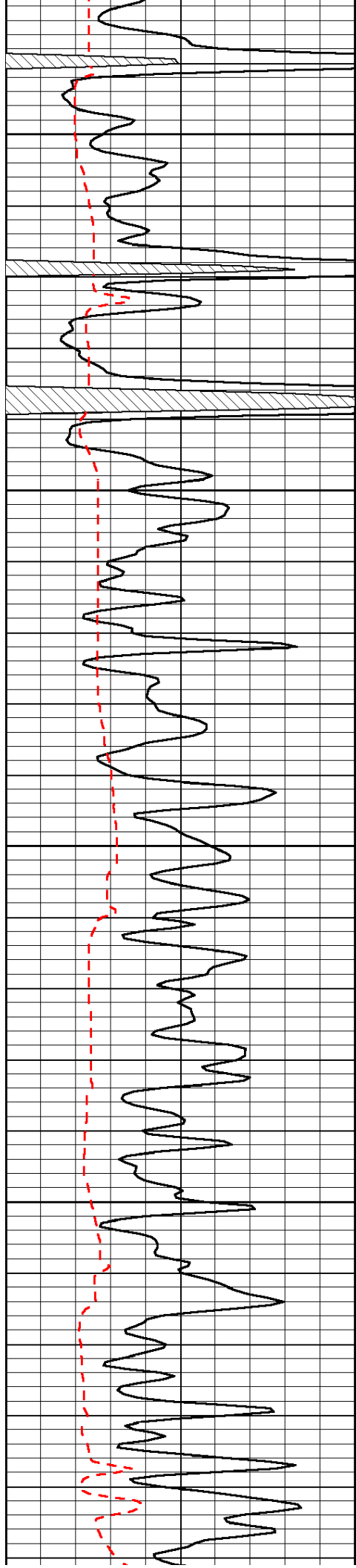


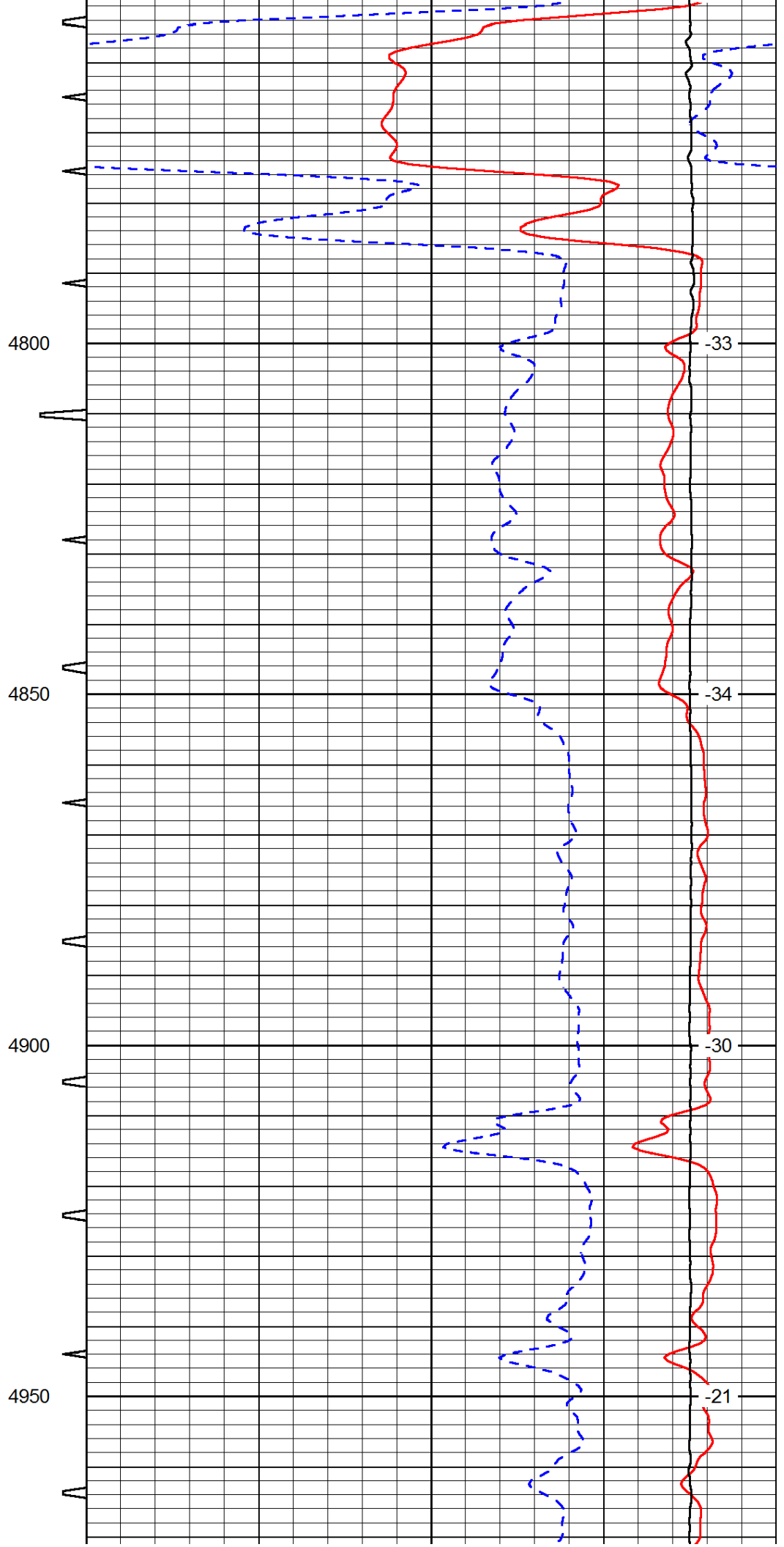
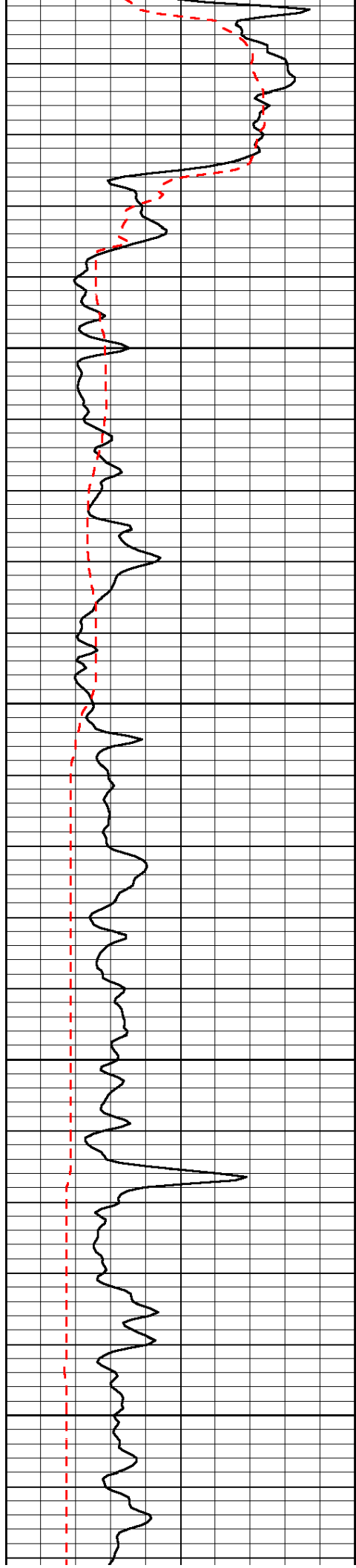


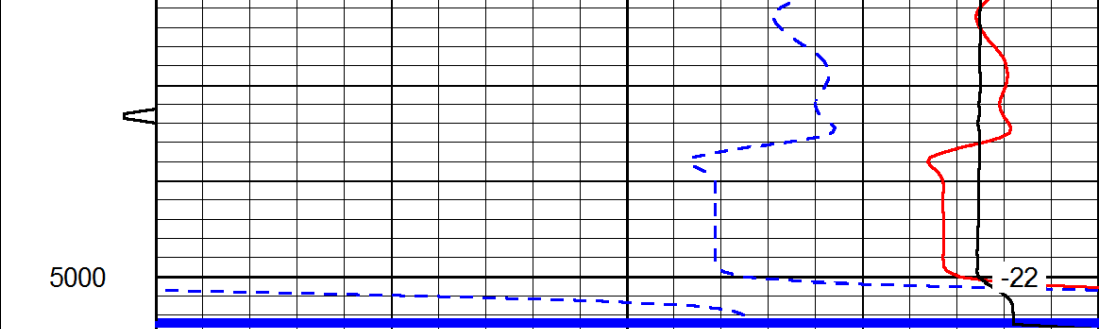
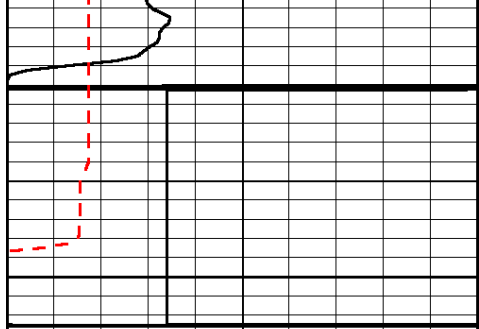












0	Gamma Ray	150	Sonic Int	140	Delta Time (usec/ft)	40
150	Gamma Ray	300	5	0	SPOR	-10
6	Caliper (GAPI)	16		15000	LTEN (lb)	0

LSPD