



Pioneer Energy Services

Dual Induction Log

15-055-22,301-00-00

API No.

Company American Warrior, Inc.

Well O'Brate Finney #1-15

Field

County Finney

State

Kansas

Location 1,697' FSL & 1,379 FWL

Sec: 15

Twp: 25S

Rge: 31W

Other Services
CNL/CDL
BHCS

Permanent Datum Ground Level

Elevation 2759

Log Measured From Kelly Bushing

11 Ft. Above Perm. Datum

K.B. 2770
D.F.
G.L. 2759

Drilling Measured From Kelly Bushing

Date 5/19/2014

Run Number One

Depth Driller 5000

Depth Logger 5000

Bottom Logged Interval 4999

Top Log Interval 1700

Casing Driller 8.625 @ 1701

Casing Logger 1713

Bit Size 7.875

Type Fluid in Hole Chemical

Salinity, ppm CL 2500

Density / Viscosity 9.55 48

pH / Fluid Loss 10.0 8.4

Source of Sample Flowline

Rm @ Meas. Temp 1.50 @ 74

Rmf @ Meas. Temp 1.13 @ 74

Rmc @ Meas. Temp 2.03 @ 74

Source of Rmf / Rmc Charts

Rm @ BHT .88 @ 126

Operating Rig Time 5 Hours

Max Rec. Temp. F 126

Equipment Number 108

Location Hays

Recorded By J. Long

Witnessed By Kevin Timson

<<< Fold Here >>>

All interpretations are opinions based on inferences from electrical or other measurements and we cannot and do not guarantee the accuracy or correctness of any interpretation, and we shall not, except in the case of gross or willful negligence on our part, be liable or responsible for any loss, costs, damages, or expenses incurred or sustained by anyone resulting from any interpretation made by any of our officers, agents or employees. These interpretations are also subject to our general terms and conditions set out in our current Price Schedule.

Comments

Thank you for using Pioneer Energy Services
www.pioneerres.com
785 625 3858

Pierceville, 9/10 Southwest on Pierceville Road to Beach Road, 2 West, 1/3 North,
East Into

Database File: c:\warrior\data\amwar_o'brate finney #1-15\amwarrior_obratefinney_1-15hd.db
Dataset Pathname: dil/awstck
Presentation Format: dil2in
Dataset Creation: Mon May 19 00:01:23 2014
Charted by: Depth in Feet scaled 1:600

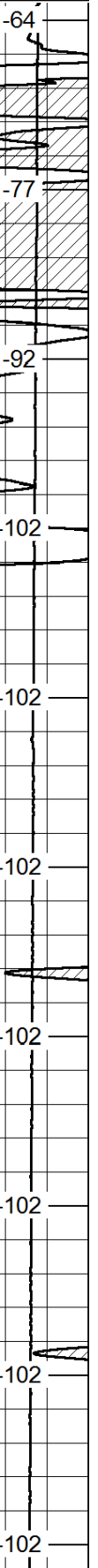
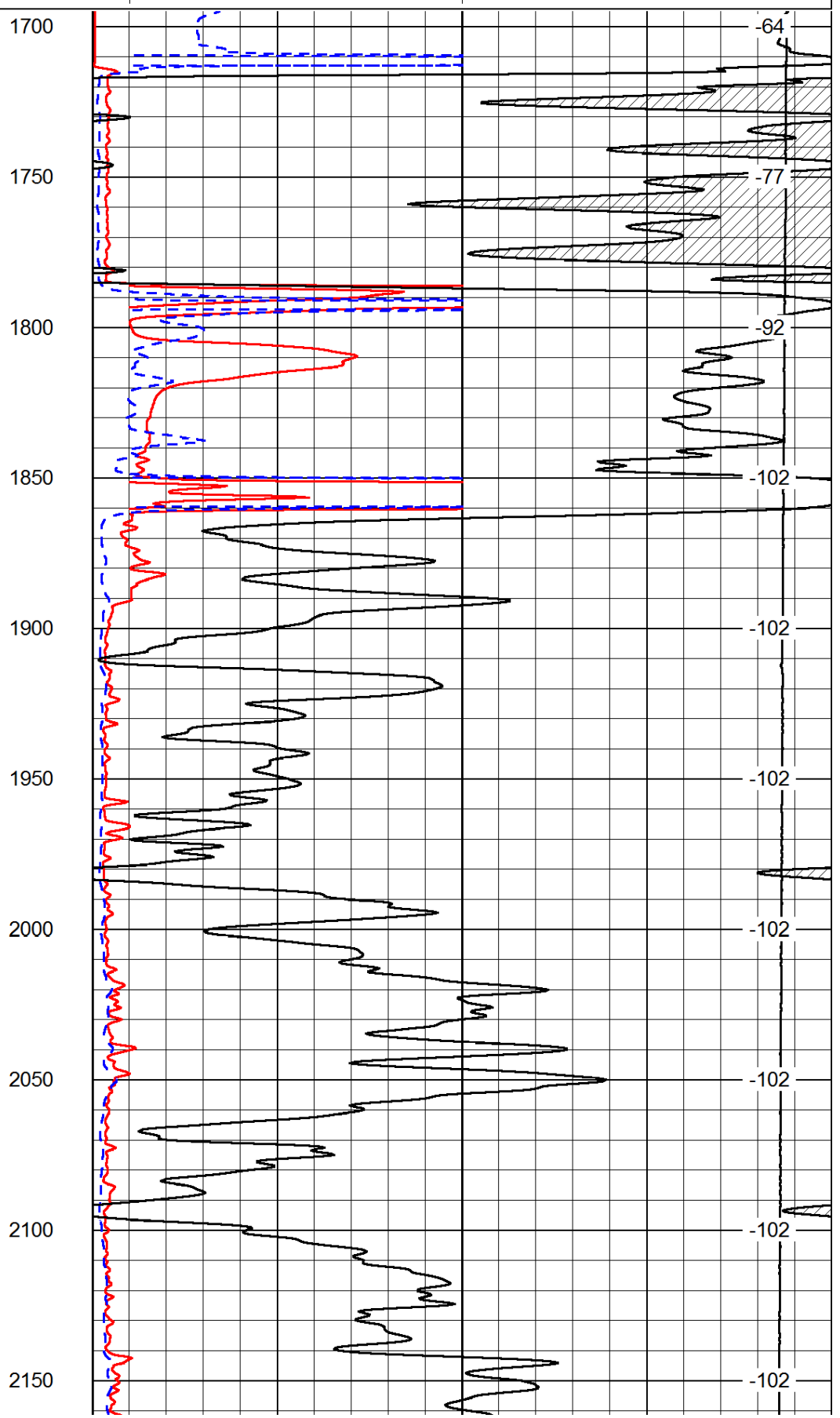
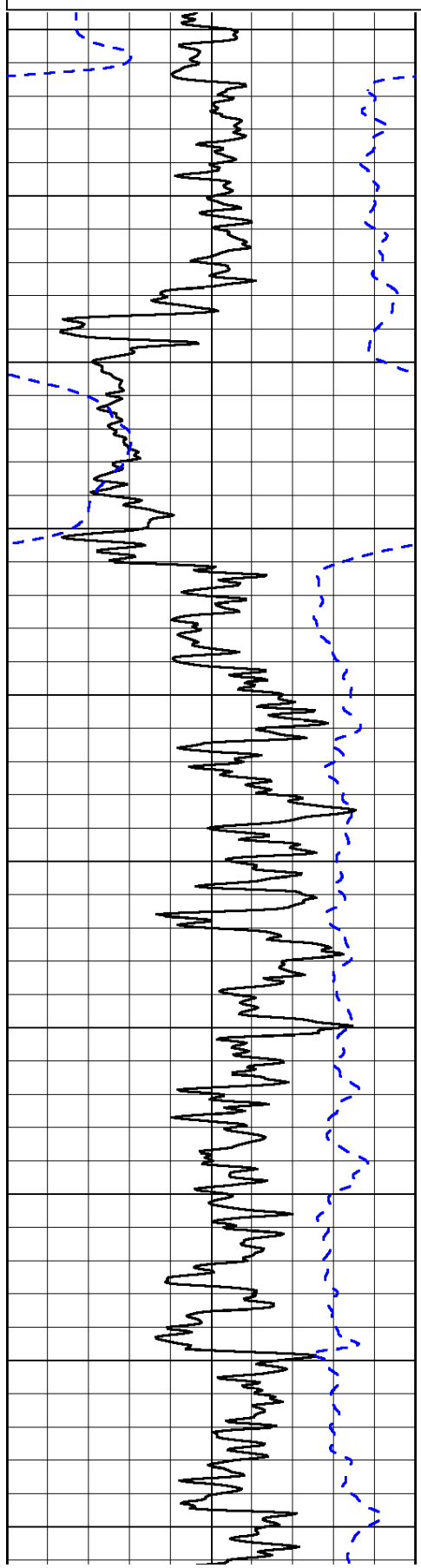
0	Gamma Ray	150
-200	SP (mV)	0

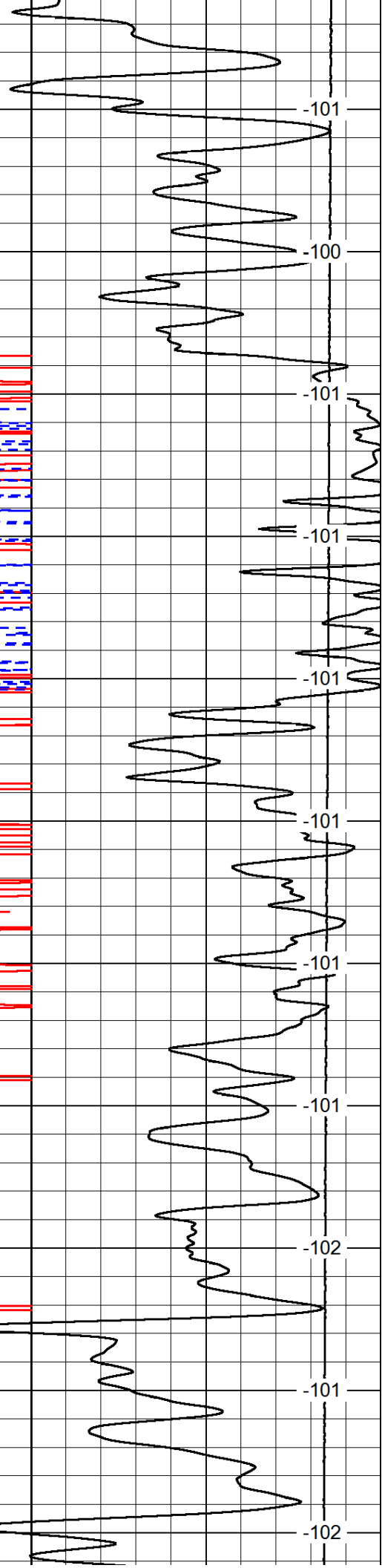
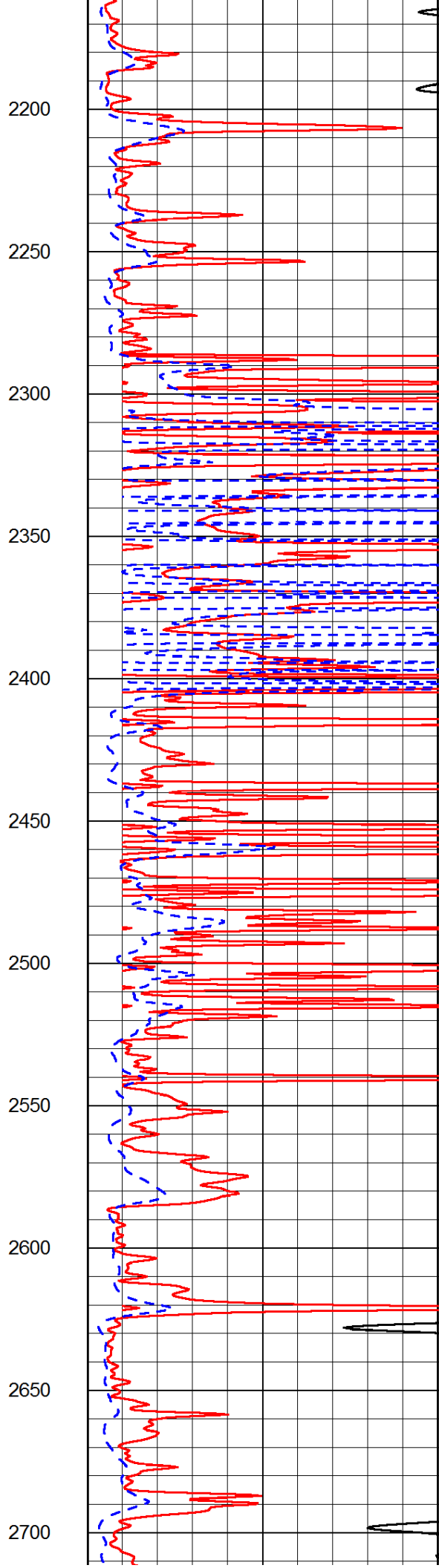
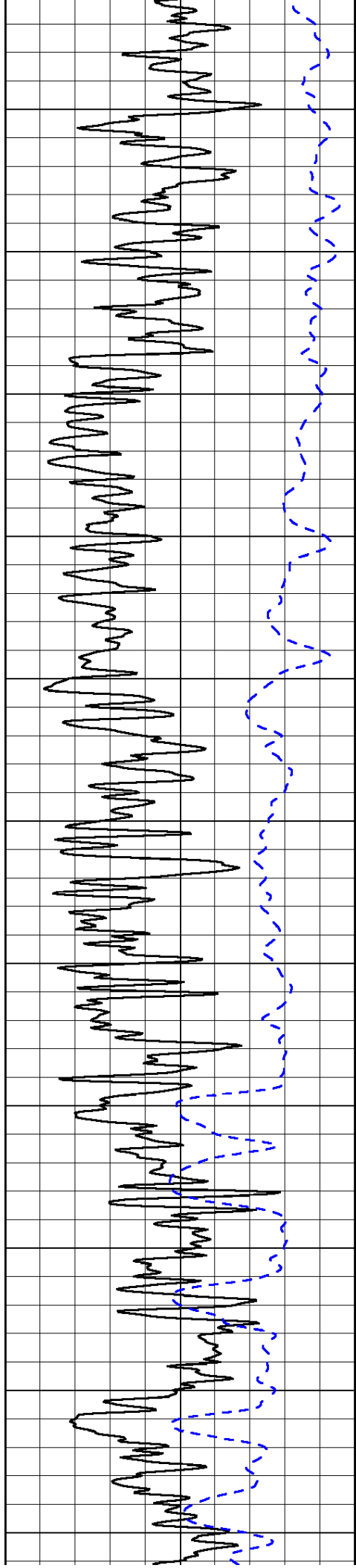
0	Shallow Resistivity	50
0	Deep Resistivity	50

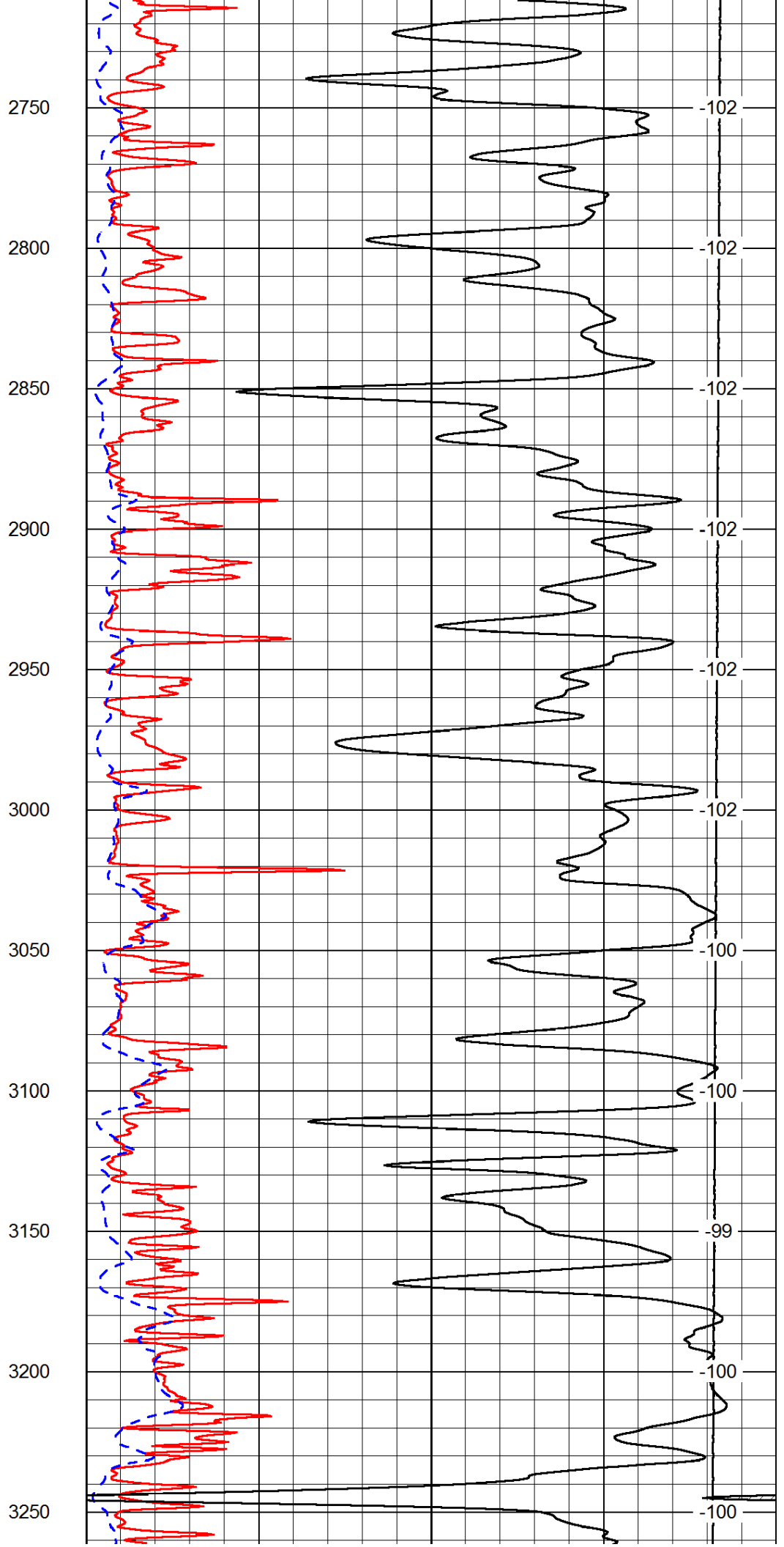
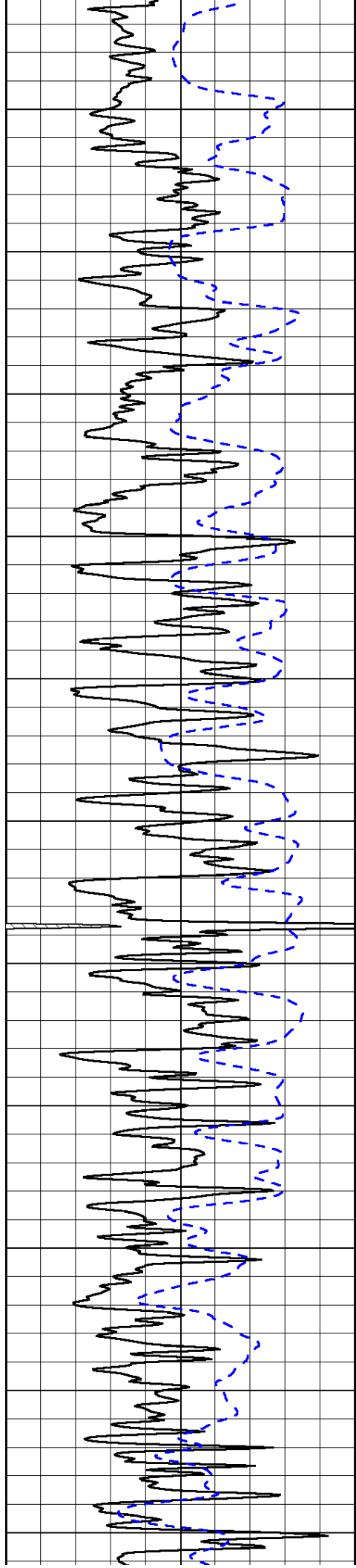
LSPD

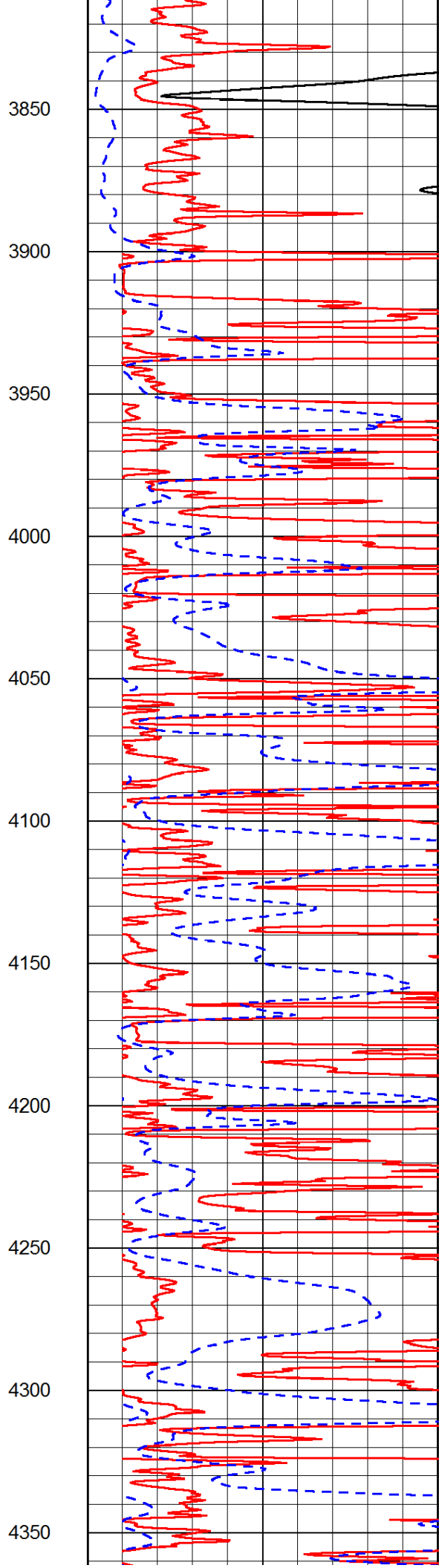
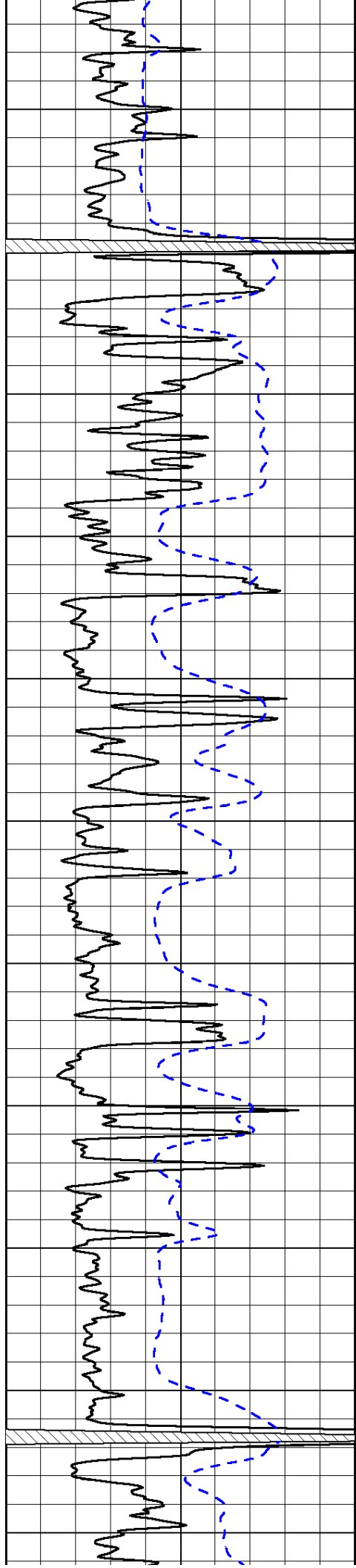
1000	Conductivity	0
15000	Line Tension	0

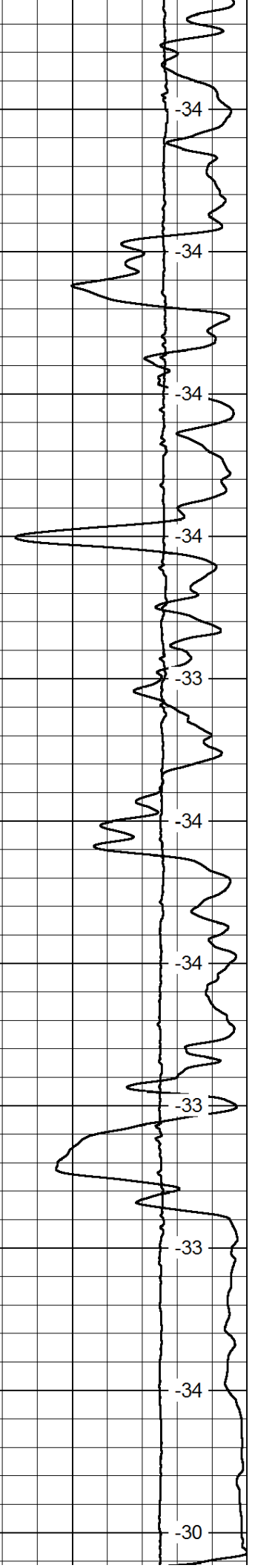
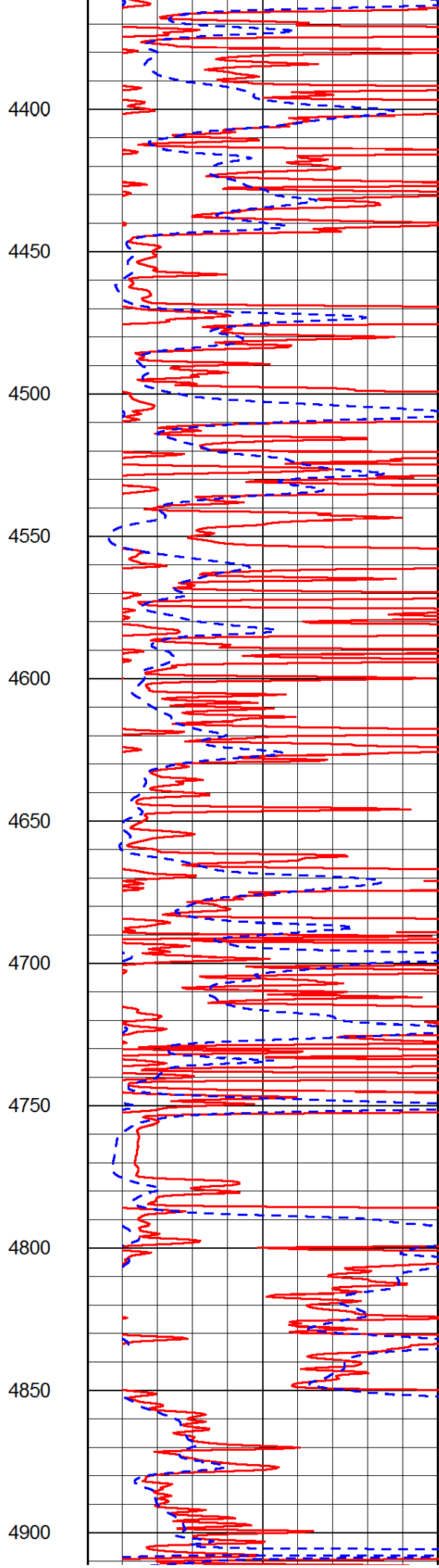
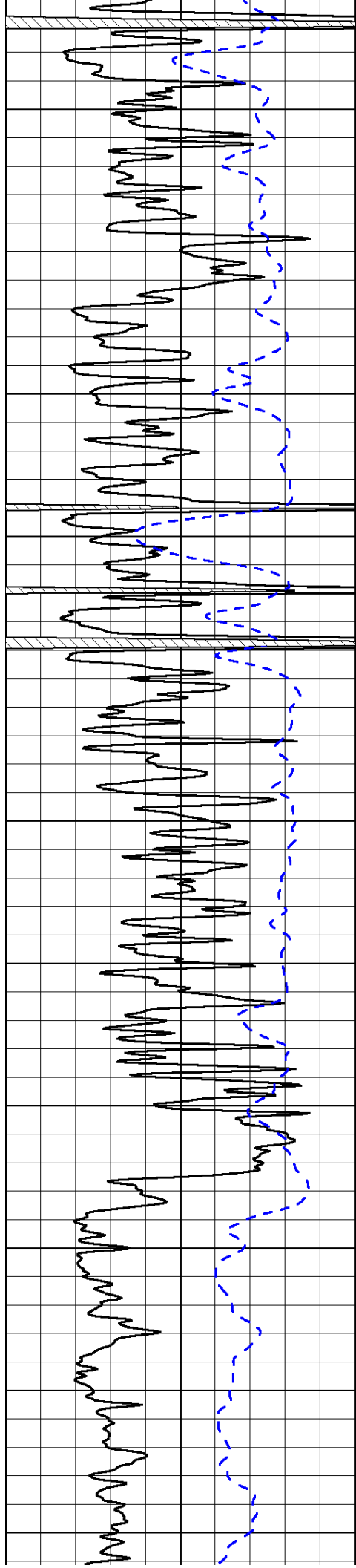
50	Shallow Resistivity	500
50	Deep Resistivity	500

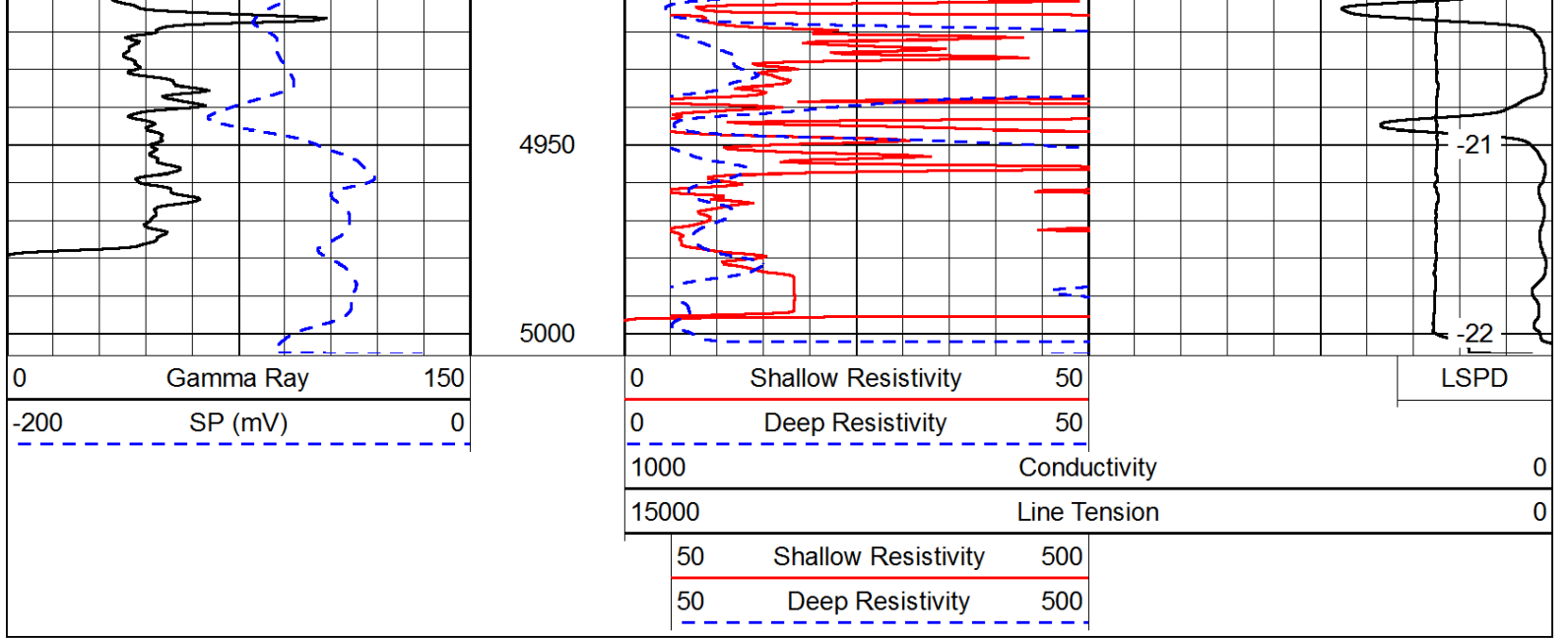




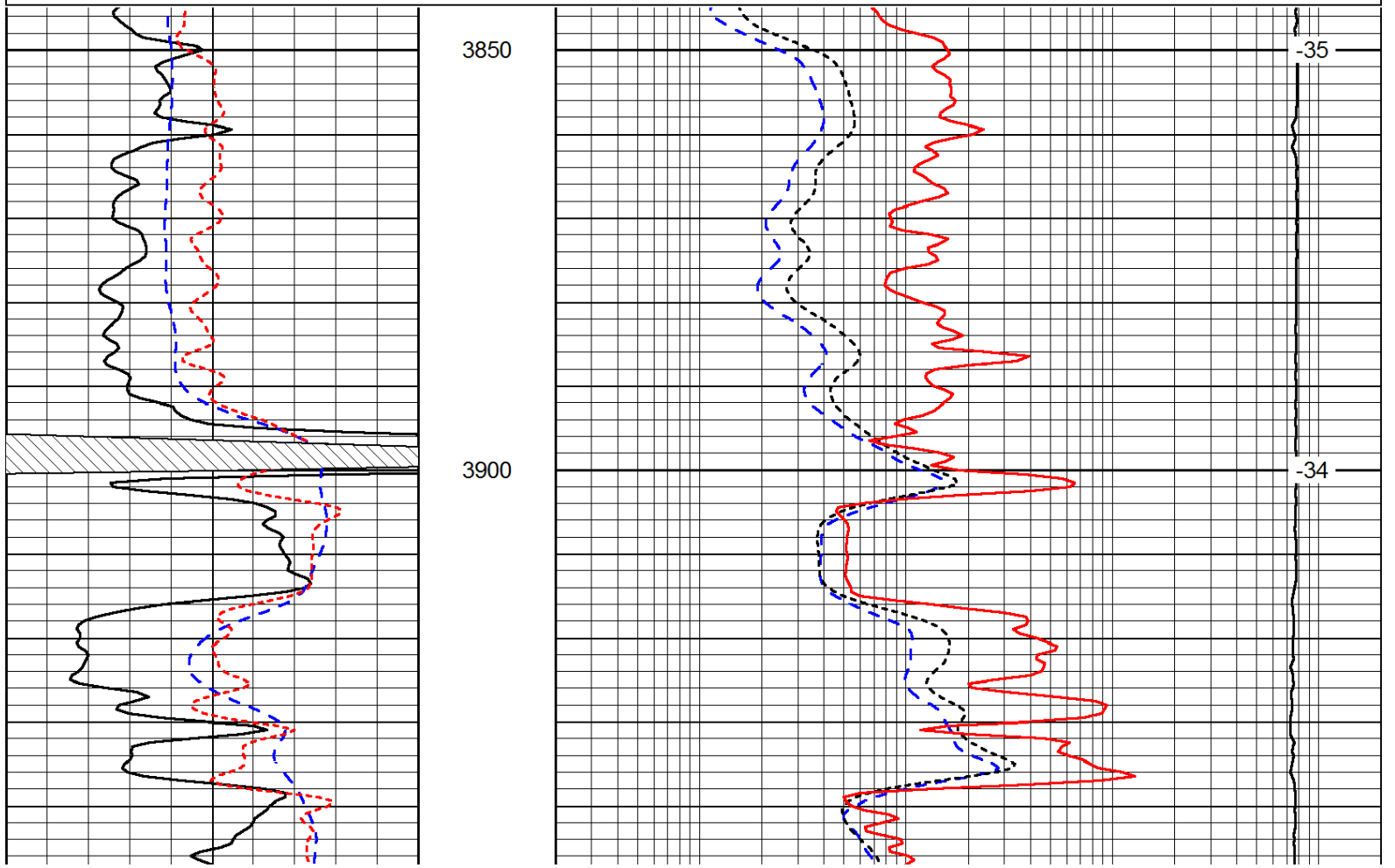
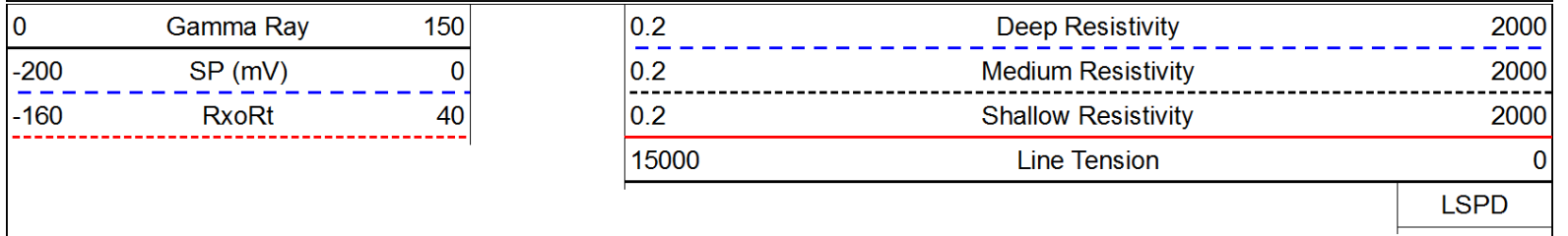


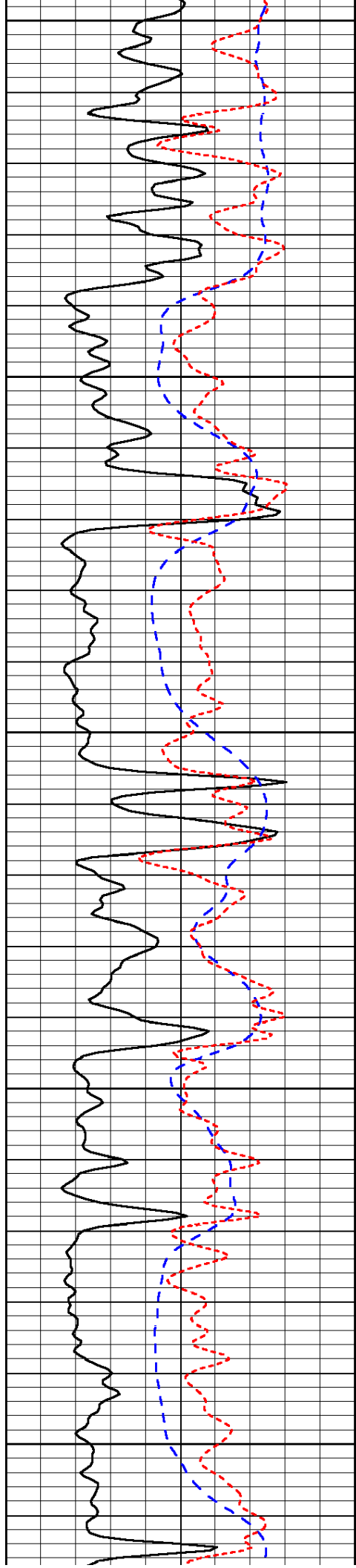






Database File: c:\warrior\data\amwar_o'brate finney #1-15\amwarrior_obratefinney_1-15hd.db
 Dataset Pathname: dil/awstck
 Presentation Format: dil
 Dataset Creation: Mon May 19 00:01:23 2014
 Charted by: Depth in Feet scaled 1:240





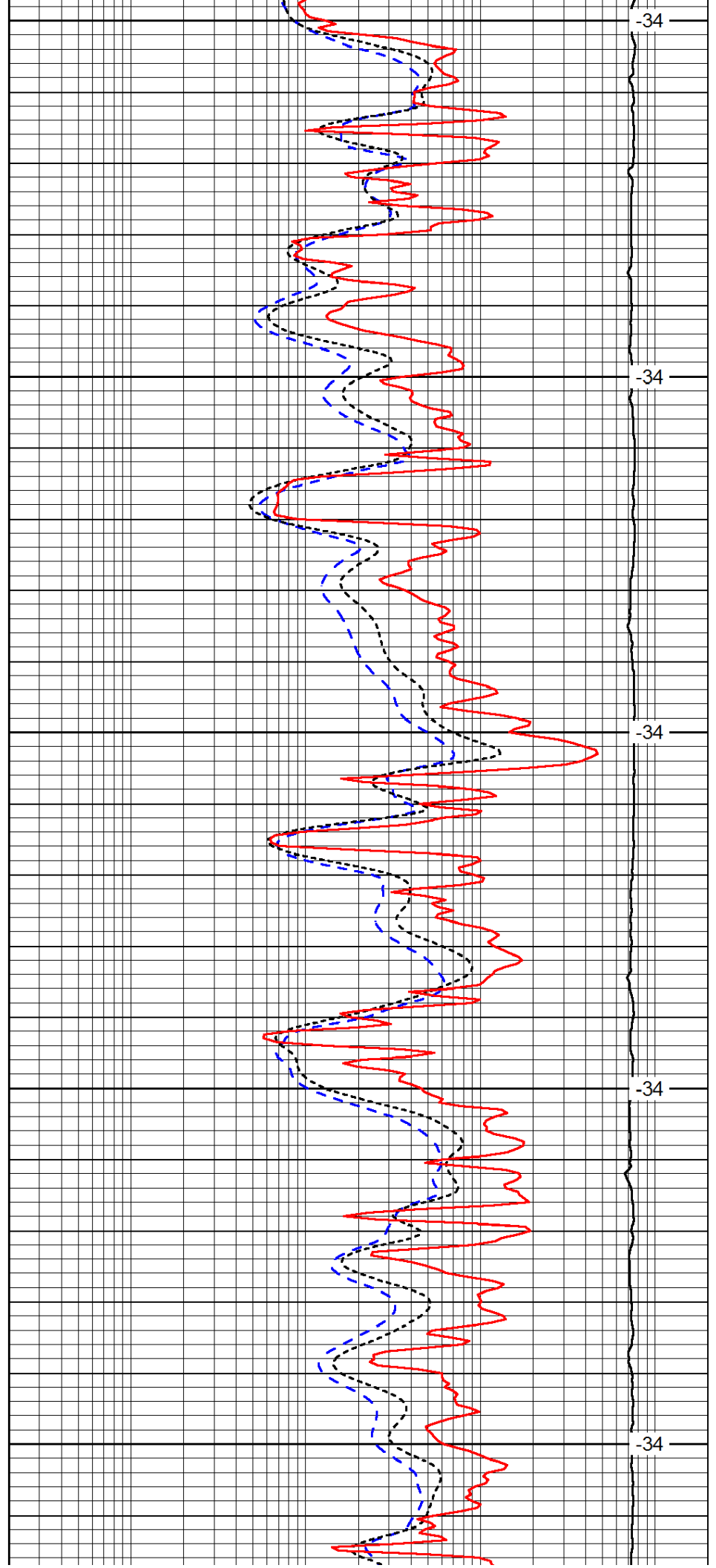
3950

4000

4050

4100

4150



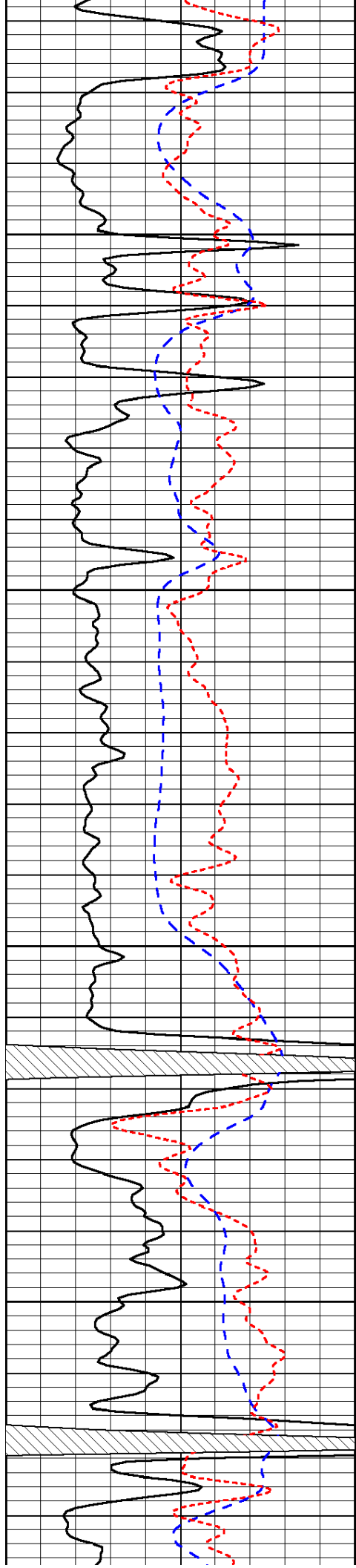
-34

-34

-34

-34

-34

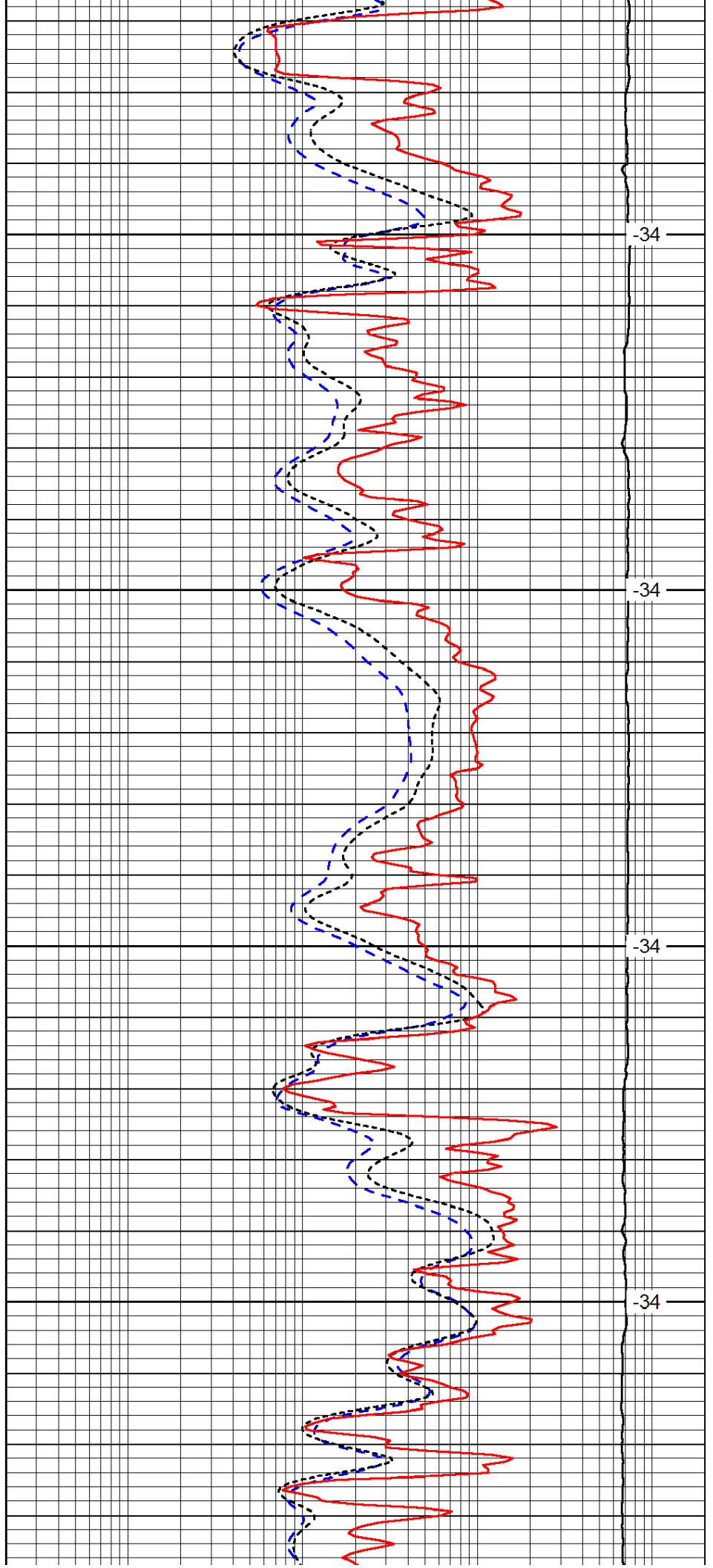


4200

4250

4300

4350

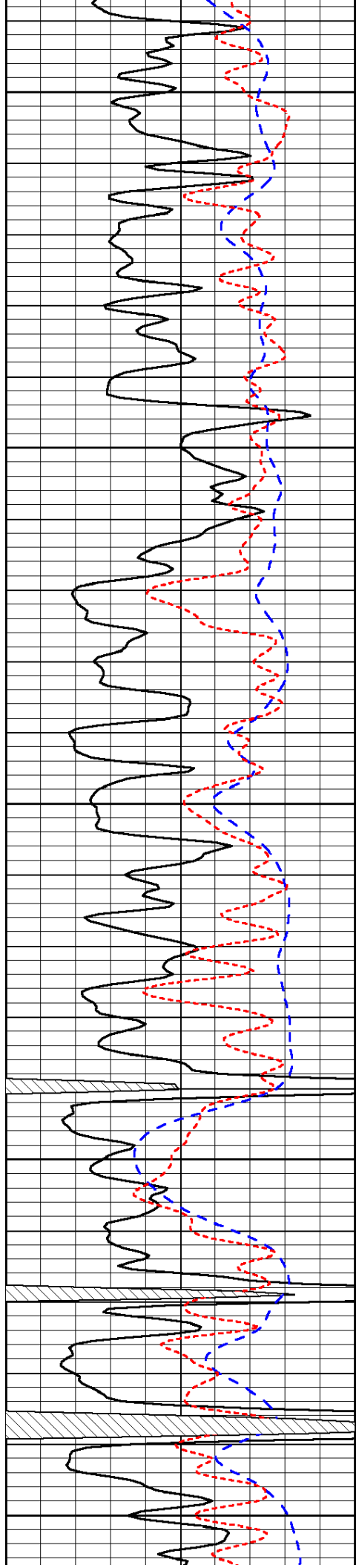


-34

-34

-34

-34



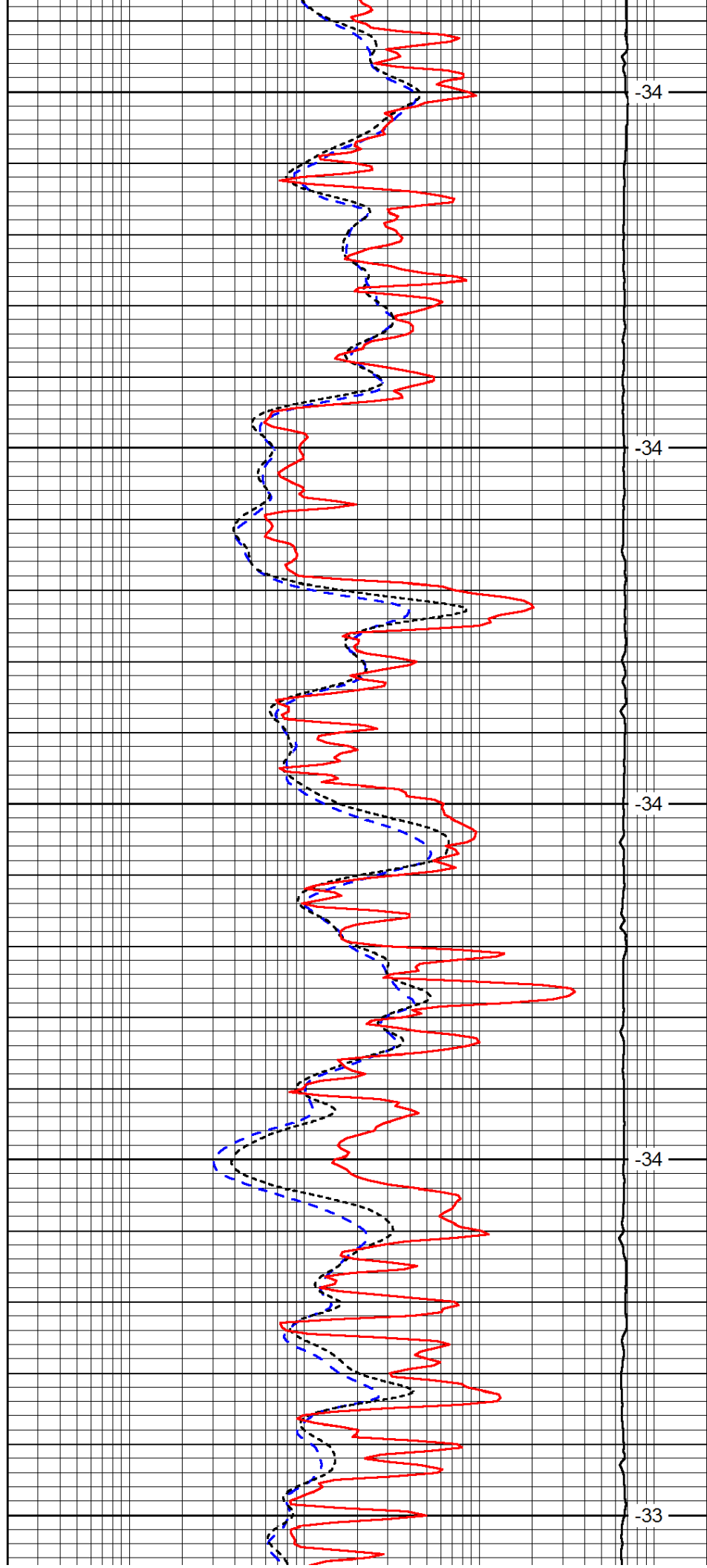
4400

4450

4500

4550

4600



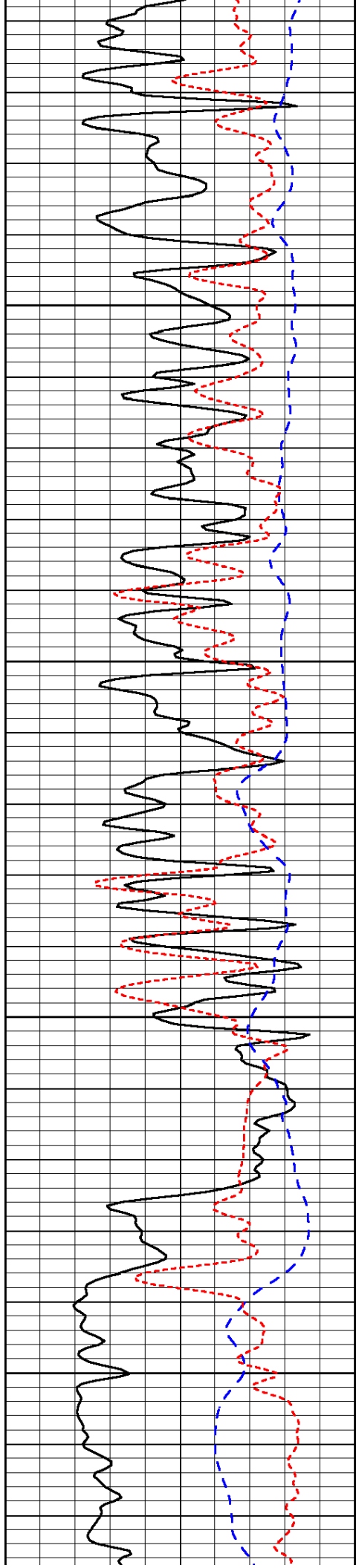
-34

-34

-34

-34

-33

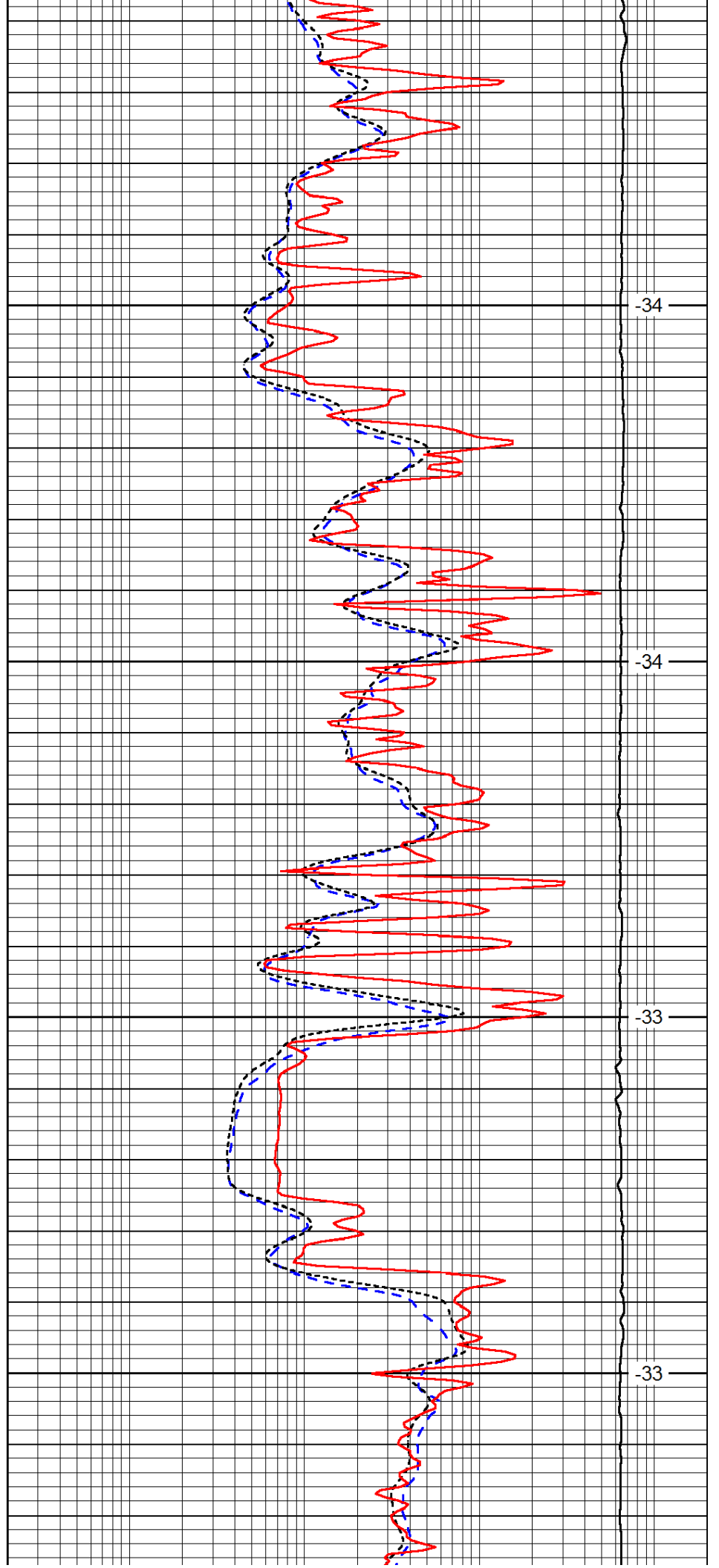


4650

4700

4750

4800

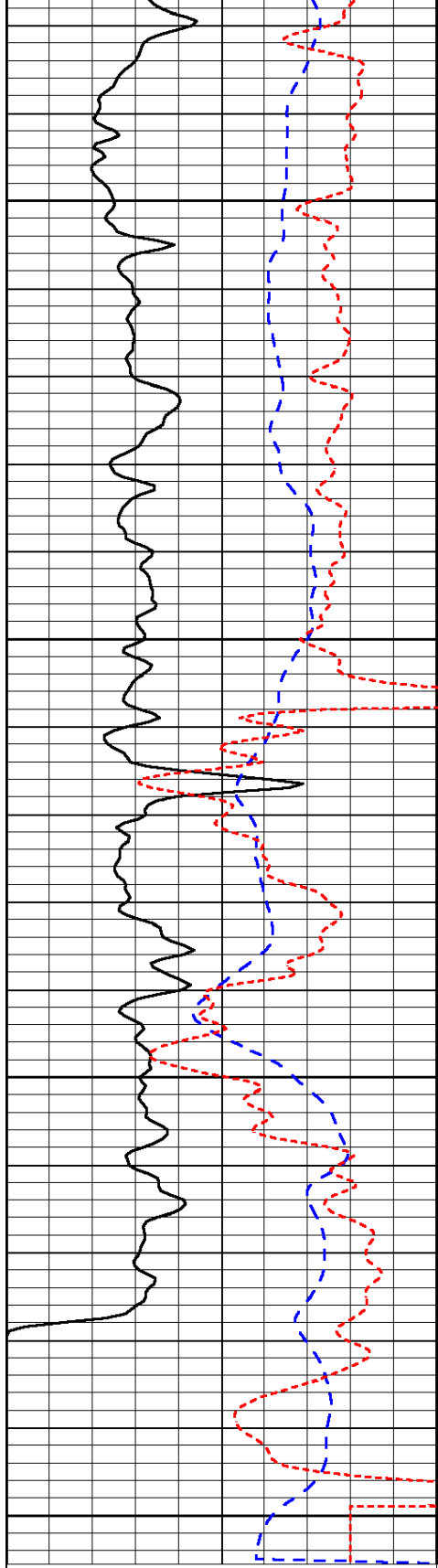


-34

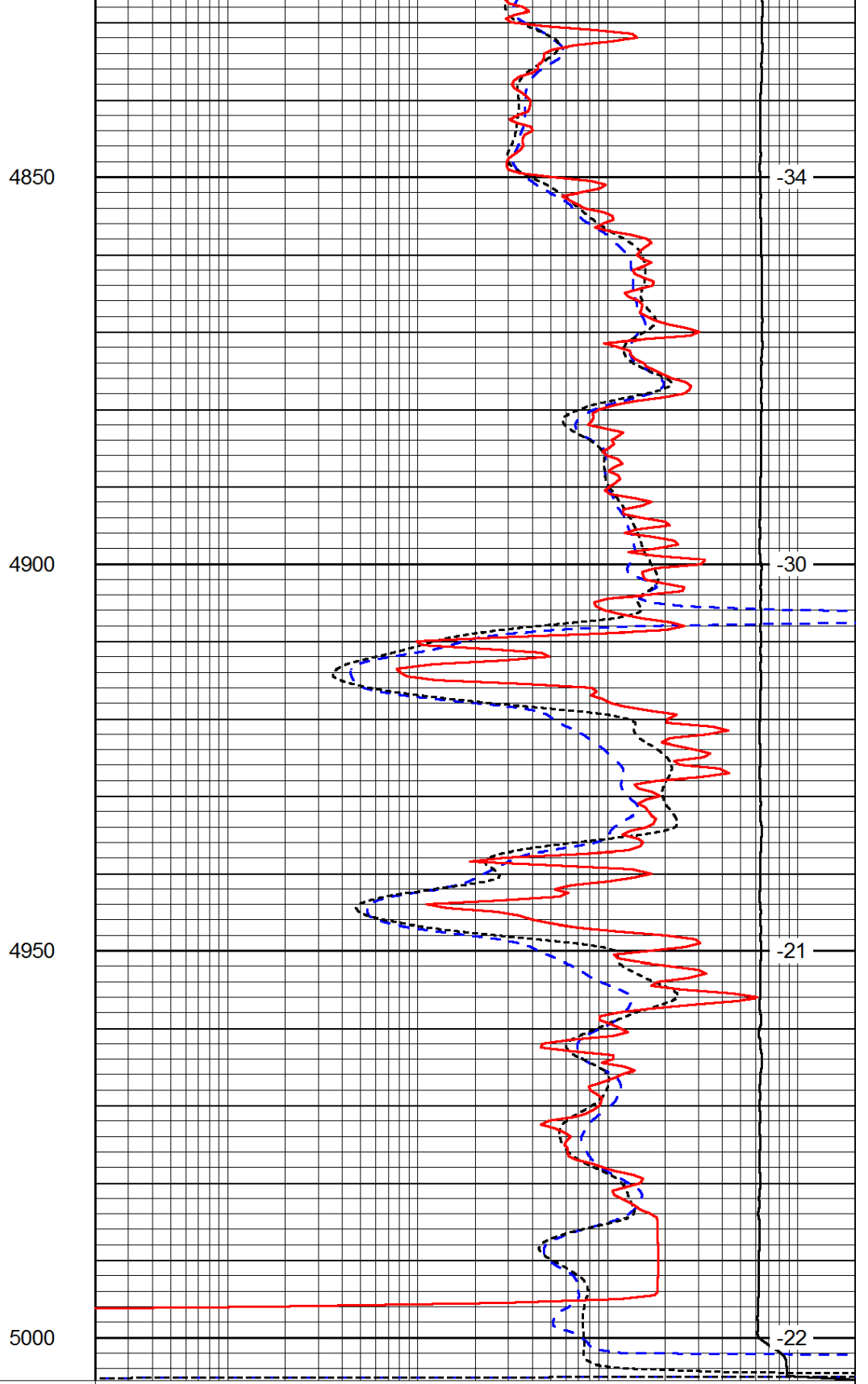
-34

-33

-33



0	Gamma Ray	150
-200	SP (mV)	0
-160	RxoRt	40



0.2	Deep Resistivity	2000
0.2	Medium Resistivity	2000
0.2	Shallow Resistivity	2000
15000	Line Tension	0

LSPD