



**COMPLETION
& PRODUCTION
SERVICES CO.**

**COMPENSATED
DENSITY/NEUTRON
LOG**

Company RITCHIE EXPLORATION, INC.
Well #1 HEIER 29 A
Field WILDCAT
County GOVE State KANSAS

Location: 1290' FNL & 2055' FEL
API #: 15-063-22133-00-00
Other Services
DIL
Elevation
K.B. 2725
D.F. 2723
G.L. 2720

SEC 29 TWP 12S RGE 28W

Permanent Datum GROUND LEVEL Elevation 2720
Log Measured From KELLY BUSHING 5' A.G.L.
Drilling Measured From KELLY BUSHING

Date	9/15/13
Run Number	ONE
Depth Driller	4620
Depth Logger	4621
Bottom Logged Interval	4597
Top Log Interval	3400
Casing Driller	8 5/8" @ 225
Casing Logger	NA
Bit Size	7 7/8"
Type Fluid in Hole	CHEMICAL MUD
Density / Viscosity	9.2/54
pH / Fluid Loss	10.0/8.0
Source of Sample	FLOWLINE
Rm @ Meas. Temp	1.5 @ 96F
Rmt @ Meas. Temp	1.12 @ 96F
Rmc @ Meas. Temp	1.79 @ 96F
Source of Rmf / Rmc	MEASUREMENT
Rm @ BHT	1.18 @ 122F
Time Circulation Stopped	2 HOURS
Time Logger on Bottom	
Maximum Recorded Temperature	122F
Equipment Number	4010
Location	HAYS, KANSAS
Recorded By	JASON CAPPELLUCCI
Witnessed By	MAX LOVELLY

<<< Fold Here >>>

All interpretations are opinions based on inferences from electrical or other measurements and we cannot and do not guarantee the accuracy or correctness of any interpretation, and we shall not, except in the case of gross or willful negligence on our part, be liable or responsible for any loss, costs, damages, or expenses incurred or sustained by anyone resulting from any interpretation made by any of our officers, agents or employees. These interpretations are also subject to our general terms and conditions set out in our current Price Schedule.

Comments

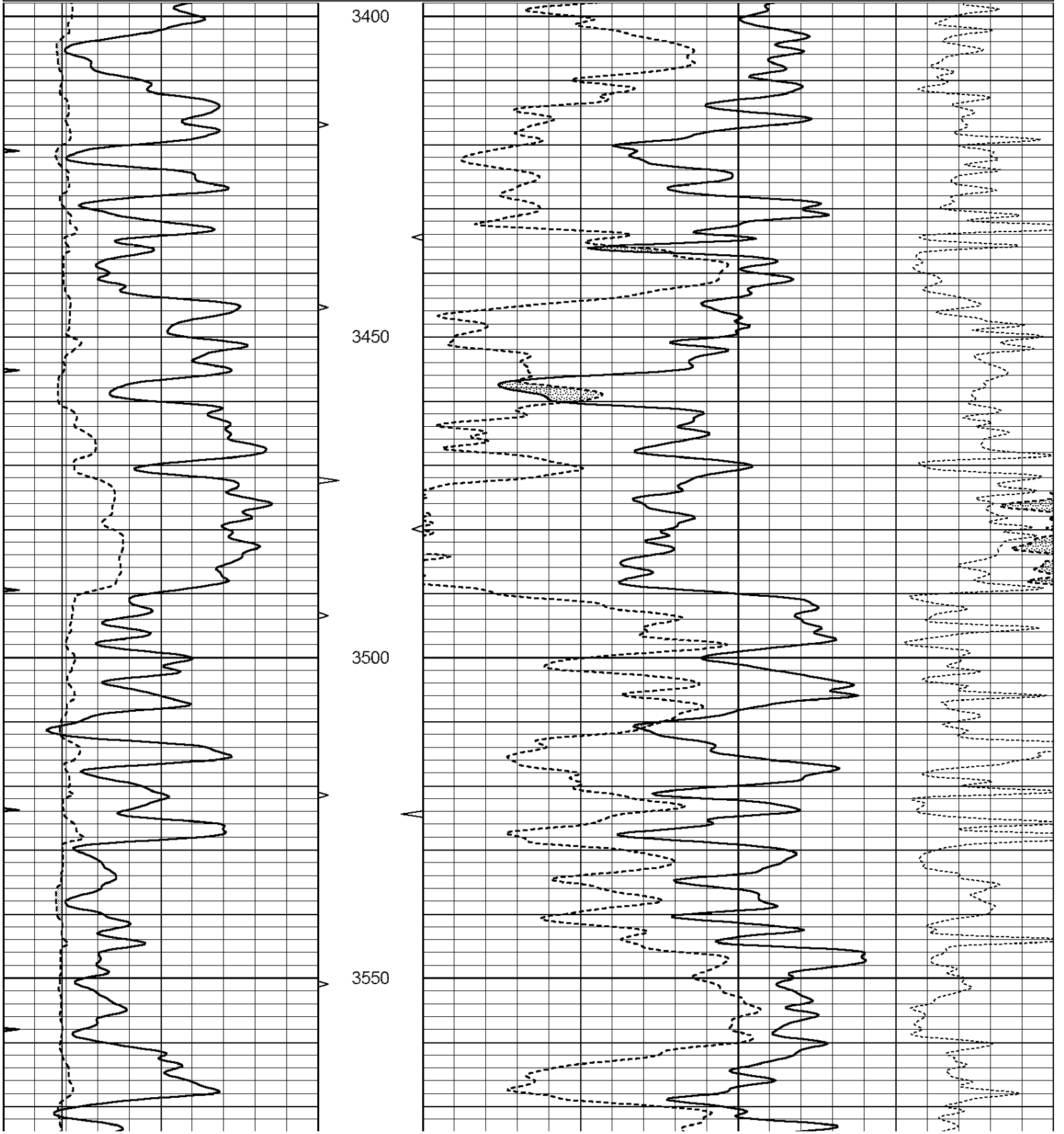
THANK YOU FOR USING NABORS, HAYS, KS. (785) 628-6395
DIRECTIONS:
GRAINFIELD, KS. - S. TO V RD. - 2 E. - 1 S. - W. & S. INTO

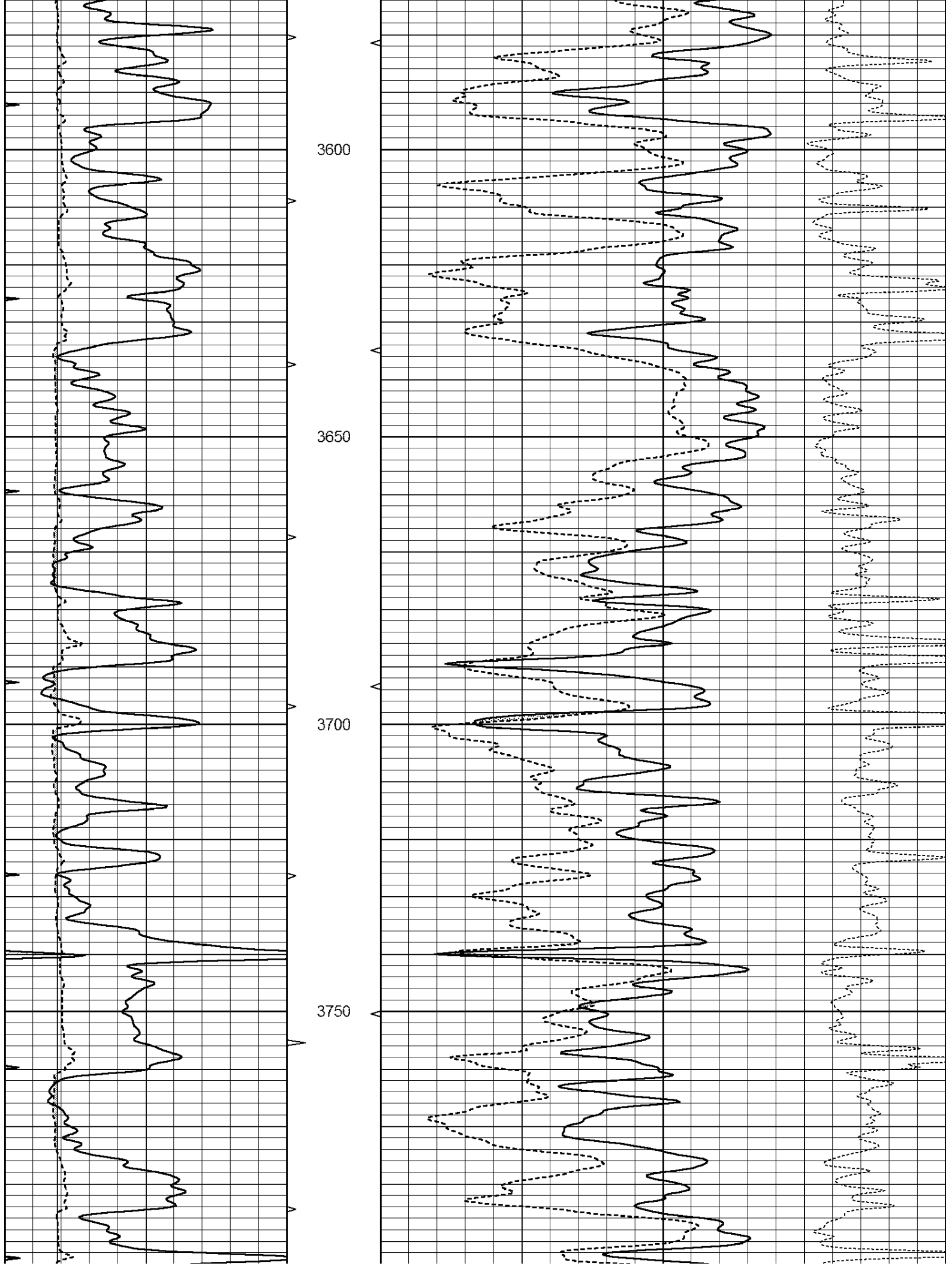


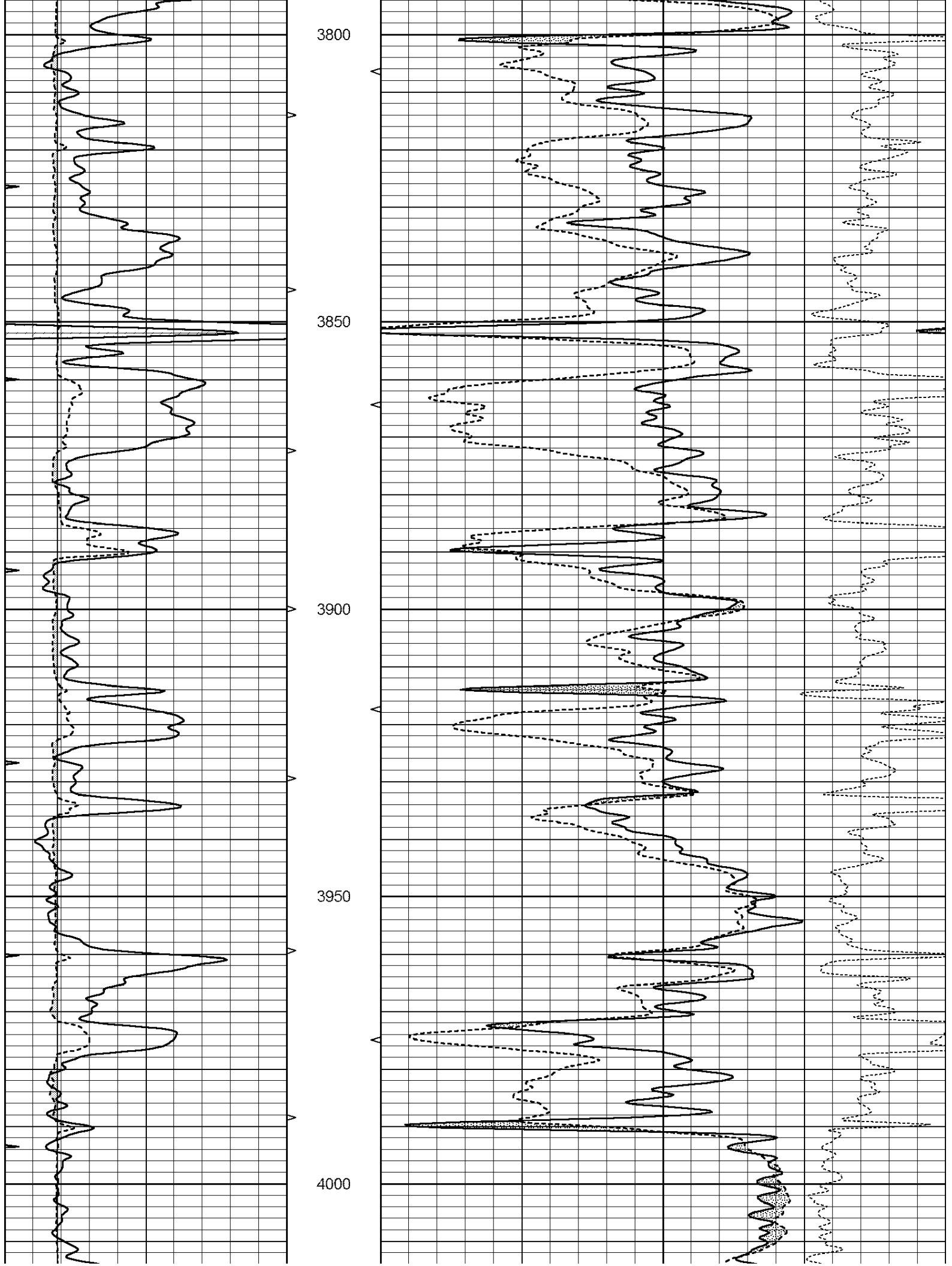
MAIN SECTION

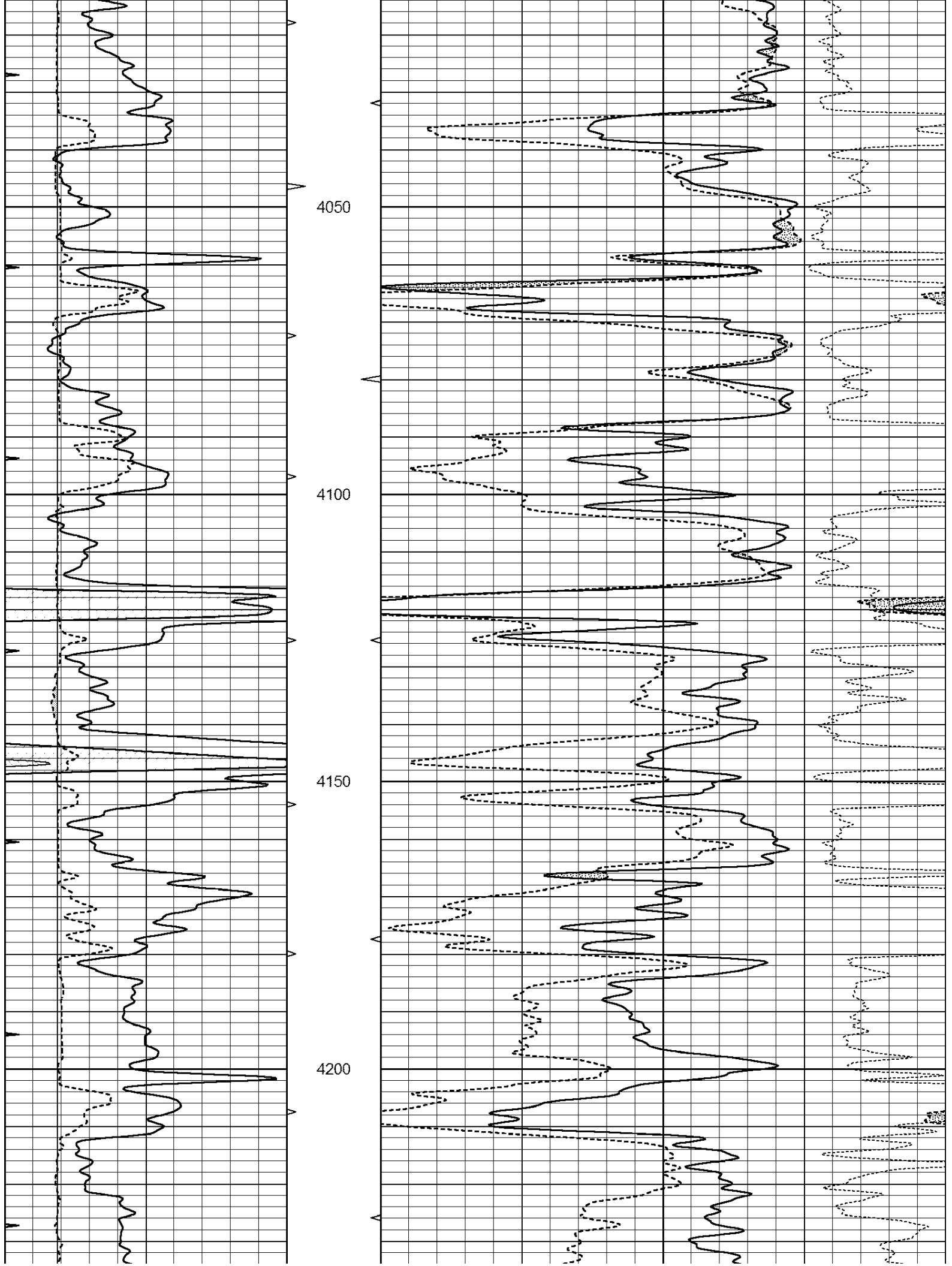
Database File: 011781ddn.db
 Dataset Pathname: pass3.1.1
 Presentation Format: den_neu
 Dataset Creation: Sun Sep 15 03:12:48 2013 by Calc Open-Cased 090629
 Charted by: Depth in Feet scaled 1:240

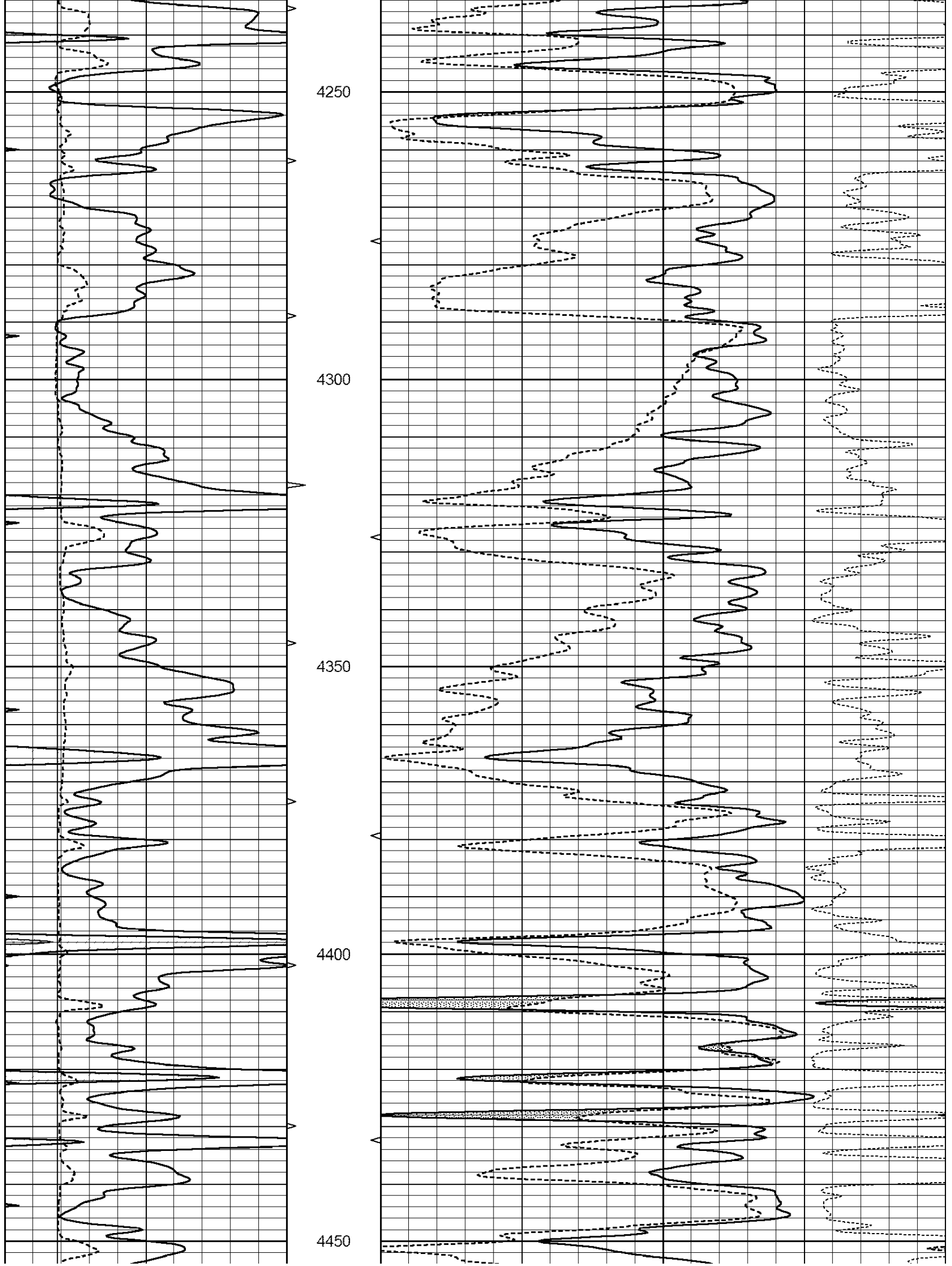
0	GAMMA RAY (GAPI)	150	ABHV	30	COMPENSATED DENSITY (pu)	-10
6	CALIPER (in)	16	10 (ft3)	0 30	COMPENSATED NEUTRON (pu)	-10
0	MINMK	20	TBHV		-0.25 CORRECTION (g/cc)	0.25
			0 (ft3)	10		

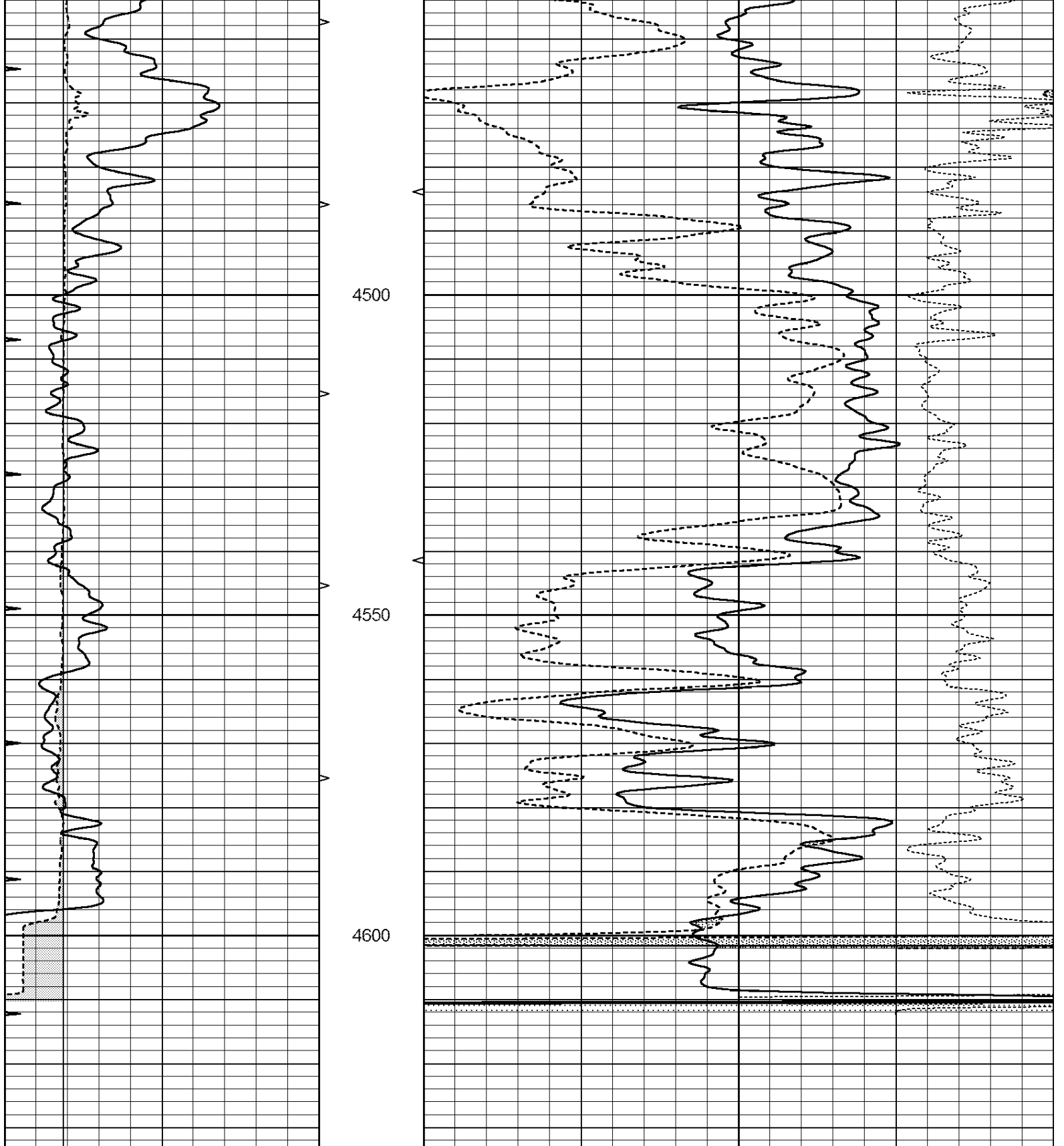












0	GAMMA RAY (GAPI)	150	ABHV	30	COMPENSATED DENSITY (pu)	-10
6	CALIPER (in)	16	10 (ft3) 0	30	COMPENSATED NEUTRON (pu)	-10
0	MINMK	20	TBHV		-0.25	CORRECTION (g/cc) 0.25
			0 (ft3) 10			