



**COMPLETION
& PRODUCTION
SERVICES CO.**

**DUAL
INDUCTION
LOG**

Company RITCHIE EXPLORATION, INC.
Well #1 HEIER 29 A
Field WILDCAT
County GOVE
State KANSAS

Company RITCHIE EXPLORATION, INC.
Well #1 HEIER 29 A
Field WILDCAT
County GOVE State KANSAS

Location: 1290' FNL & 2055' FEL
API # : 15-063-22133-00-00
CDL/CNL
Other Services
Elevation
Permanent Datum GROUND LEVEL Elevation 2720
Log Measured From KELLY BUSHING 5' A.G.L.
Drilling Measured From KELLY BUSHING
SEC 29 TWP 12S RGE 28W

Date	9/15/13		
Run Number	ONE		
Depth Driller	4620		
Depth Logger	4621		
Bottom Logged Interval	4619		
Top Log Interval	00		
Casing Driller	8 5/8" @ 225		
Casing Logger			
Bit Size	7 7/8"		
Type Fluid in Hole	CHEMICAL MUD	CHLORIDES 2500 PPM	
Density / Viscosity	9.2/54		
pH / Fluid Loss	10.0/8.0		
Source of Sample	FLOWLINE		
Rm @ Meas. Temp	1.5 @ 96F		
Rmt @ Meas. Temp	1.12 @ 96F		
Rmc @ Meas. Temp	1.79 @ 96F		
Source of Rmf / Rmc	MEASUREMENT		
Rm @ BHT	1.18 @ 122F		
Time Circulation Stopped	2 HOURS		
Time Logger on Bottom			
Maximum Recorded Temperature	122F		
Equipment Number	4010		
Location	HAYS, KANSAS		
Recorded By	JASON CAPPELLUCCI		
Witnessed By	MAX LOVELLY		

<<< Fold Here >>>

All interpretations are opinions based on inferences from electrical or other measurements and we cannot and do not guarantee the accuracy or correctness of any interpretation, and we shall not, except in the case of gross or willful negligence on our part, be liable or responsible for any loss, costs, damages, or expenses incurred or sustained by anyone resulting from any interpretation made by any of our officers, agents or employees. These interpretations are also subject to our general terms and conditions set out in our current Price Schedule.

Comments

THANK YOU FOR USING NABORS, HAYS, KS. (785) 628-6395
DIRECTIONS:
GRAINFIELD, KS. - S. TO V RD. - 2 E. - 1 S. - W. & S. INTO

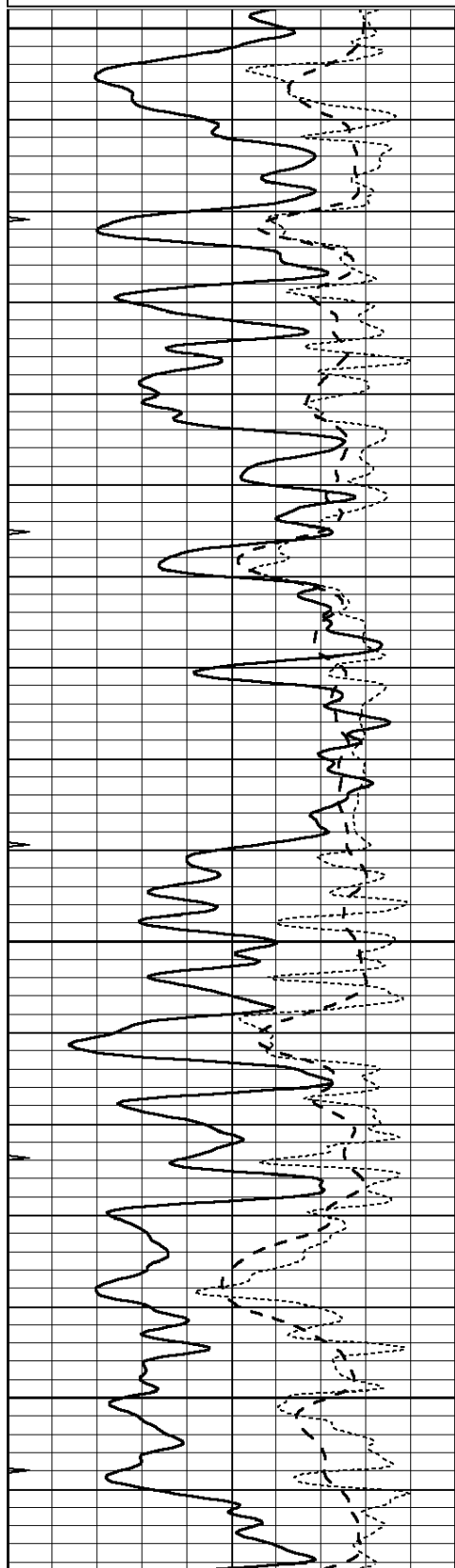


MAIN SECTION

Database File: 011781ddn.db
 Dataset Pathname: pass3.1.1
 Presentation Format: _dil
 Dataset Creation: Sun Sep 15 03:12:48 2013 by Calc Open-Cased 090629
 Charted by: Depth in Feet scaled 1:240

0	GAMMA RAY (GAPI)	150
-100	SP (mV)	100
-250	Rxo/Rt	50
0	MINMK	20

0.2	SHALLOW GUARD (Ohm-m)	2000
0.2	DEEP INDUCTION (Ohm-m)	2000
0.2	MEDIUM INDUCTION (Ohm-m)	2000

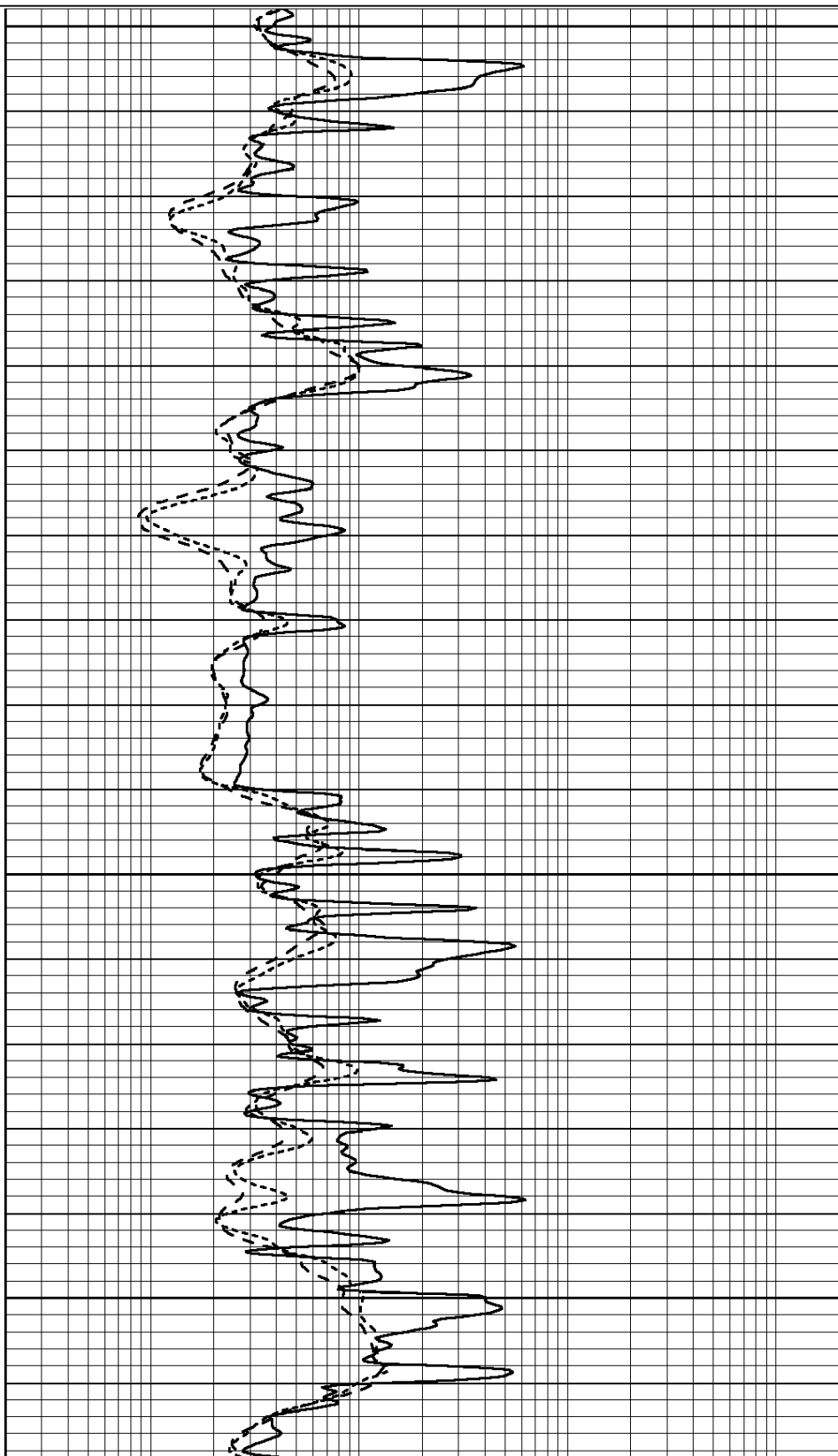


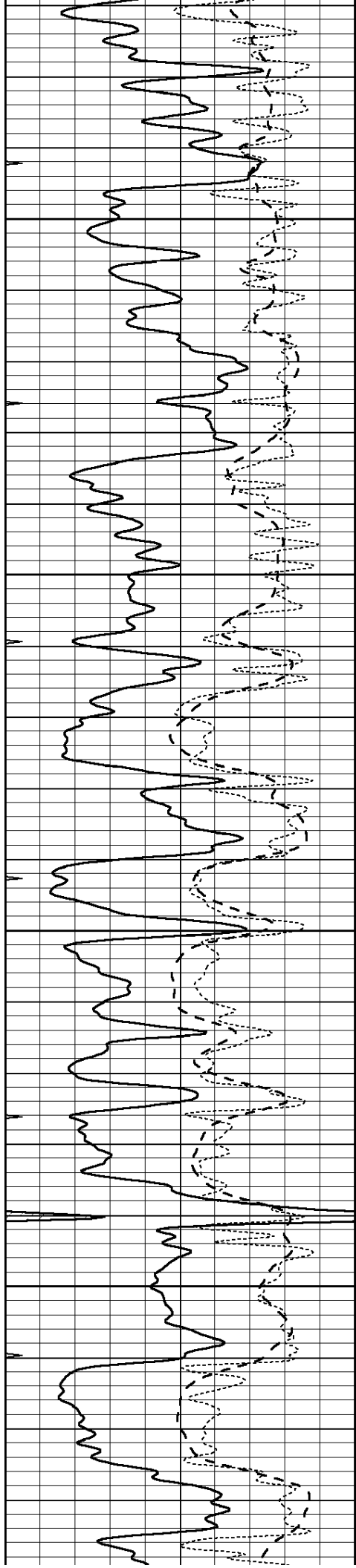
3400

3450

3500

3550



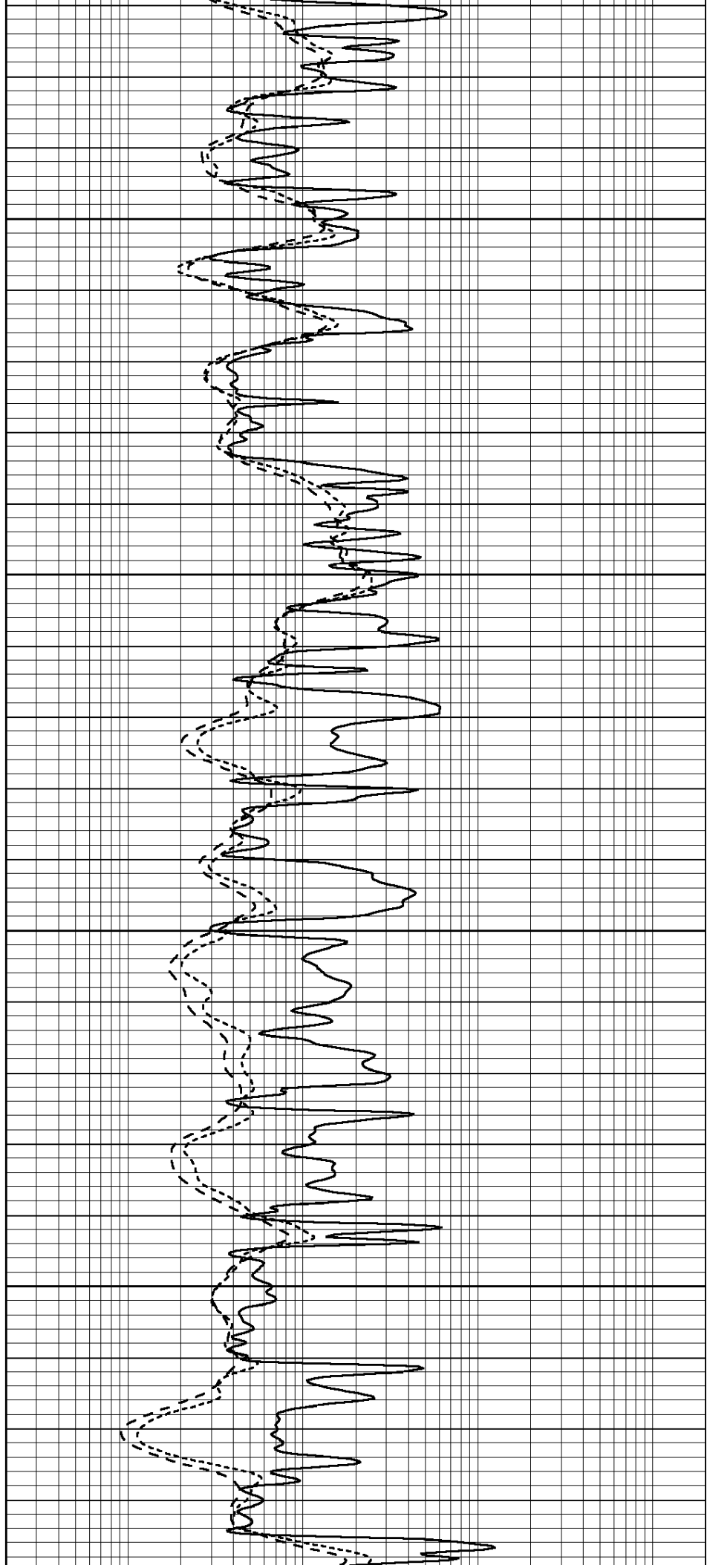


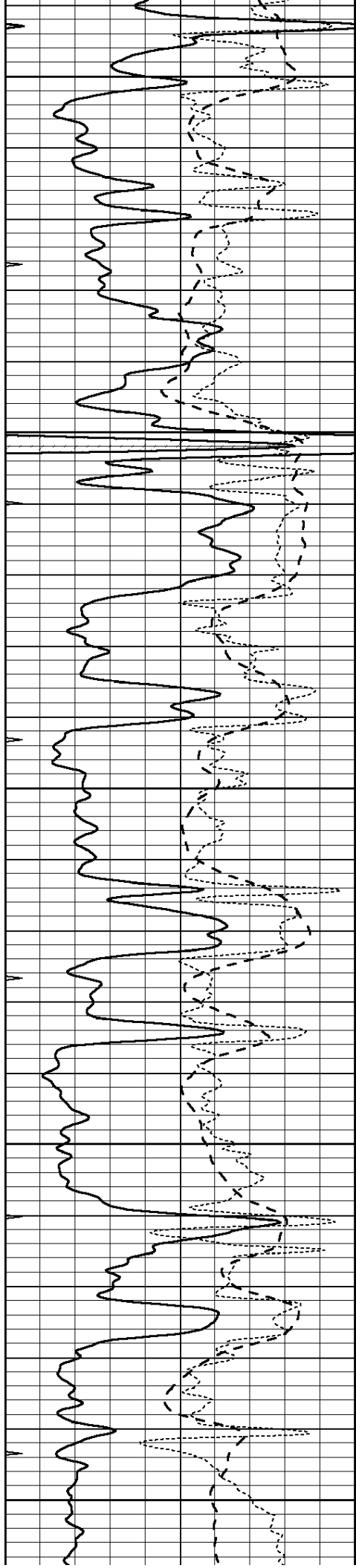
3600

3650

3700

3750





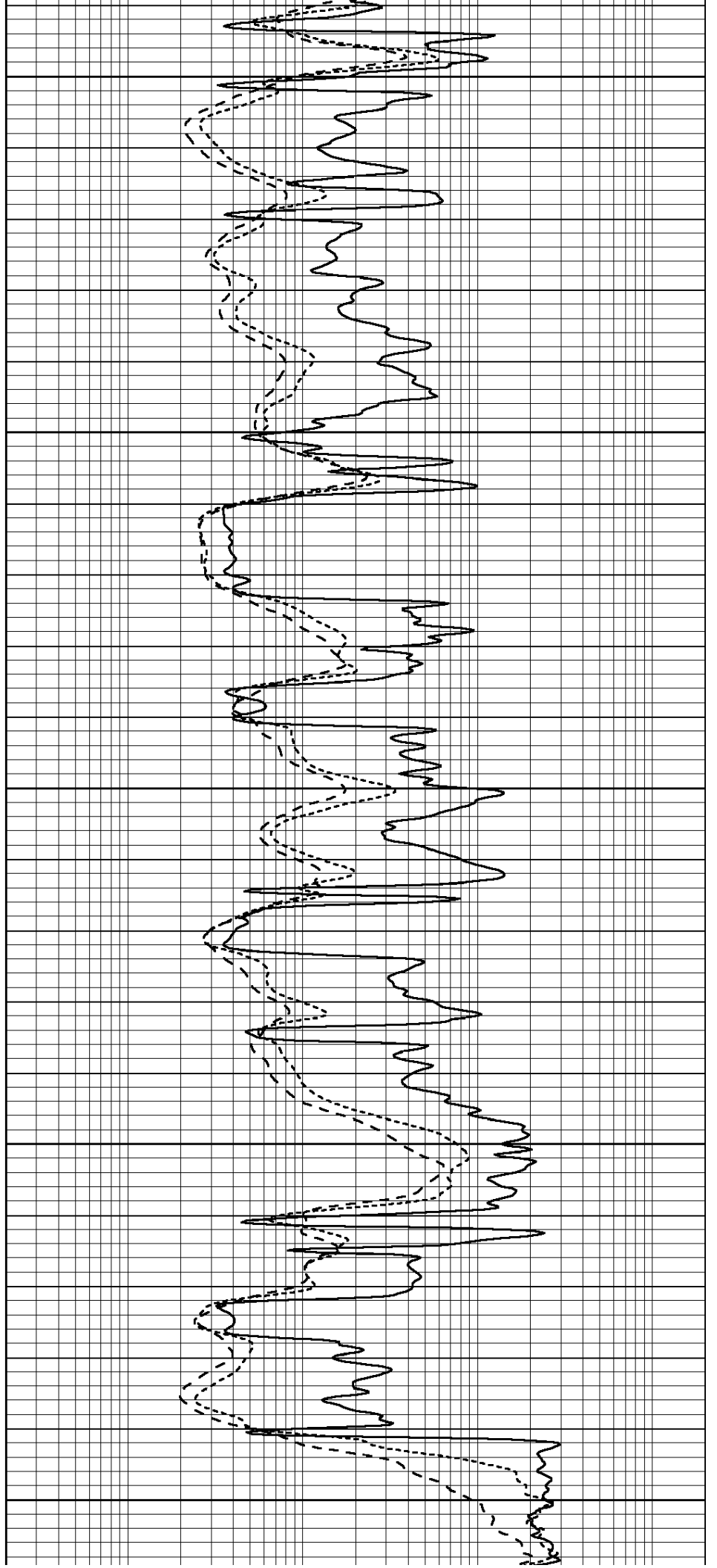
3800

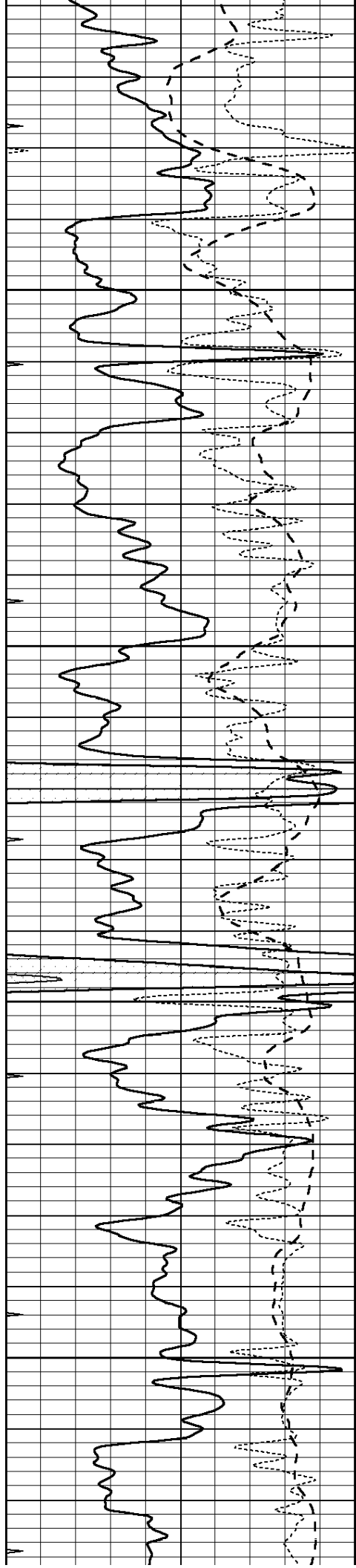
3850

3900

3950

4000



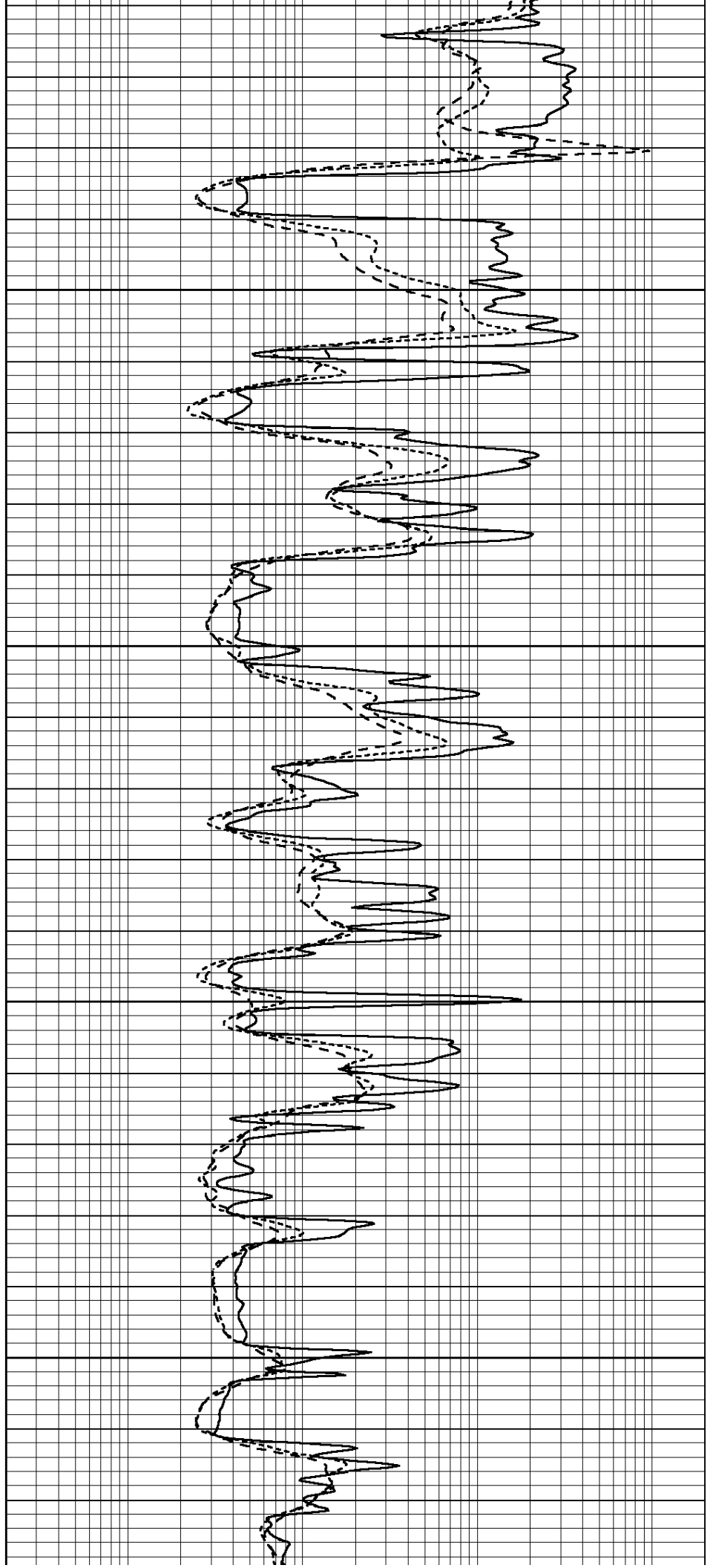


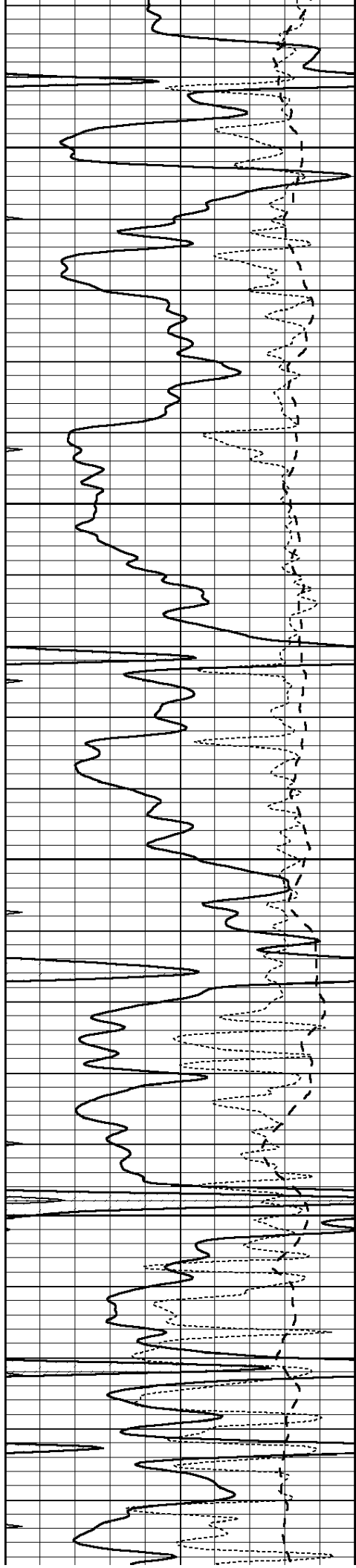
4050

4100

4150

4200



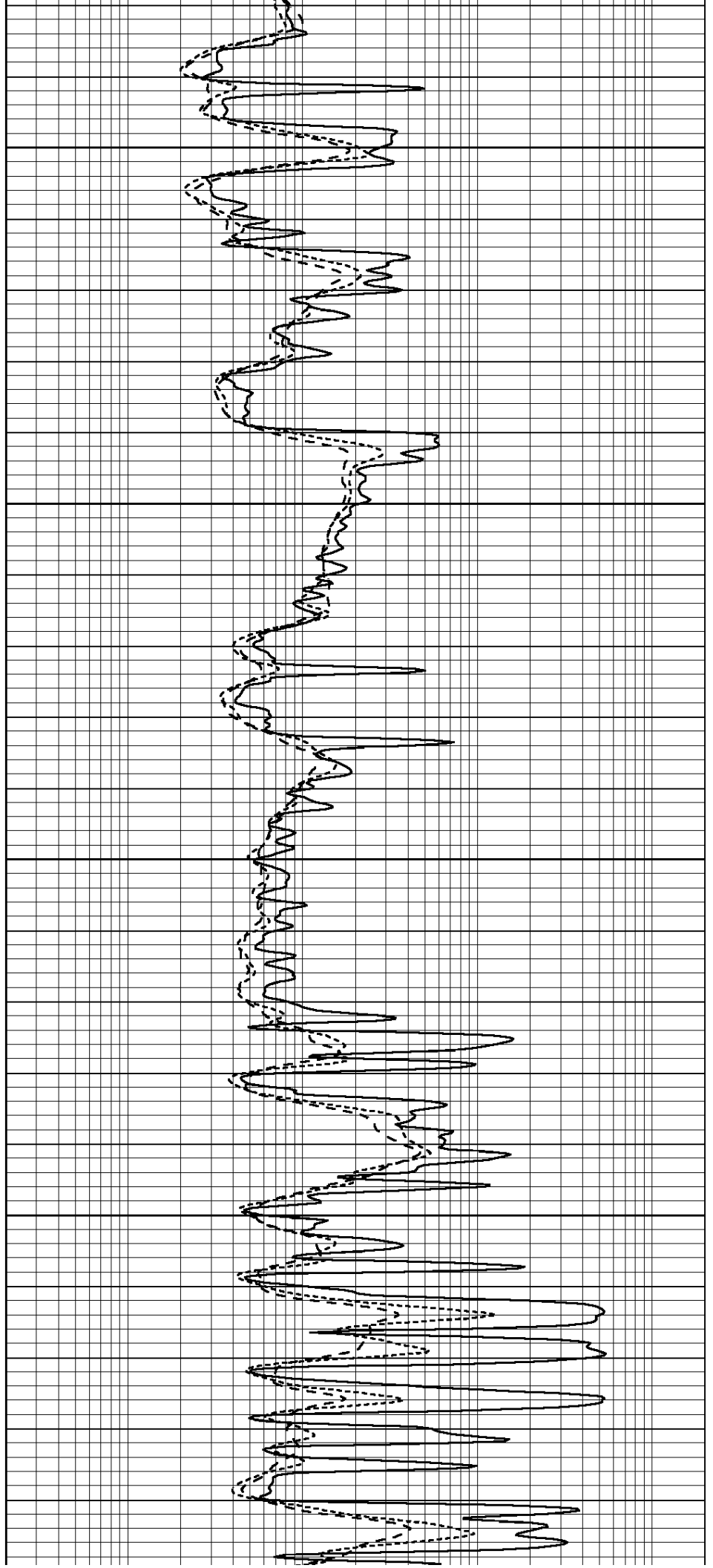


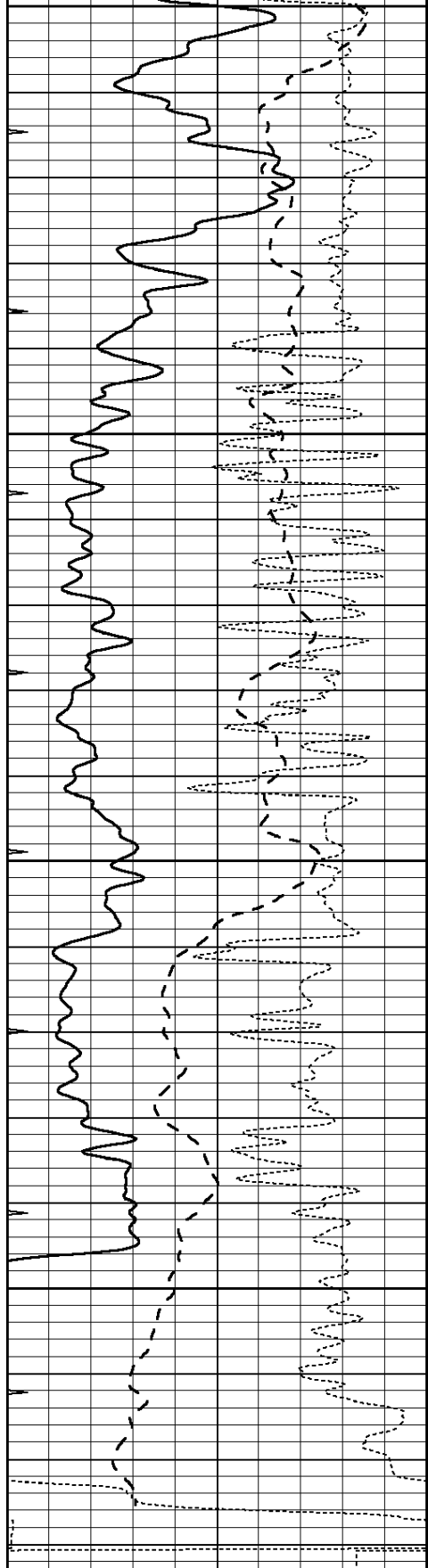
4250

4300

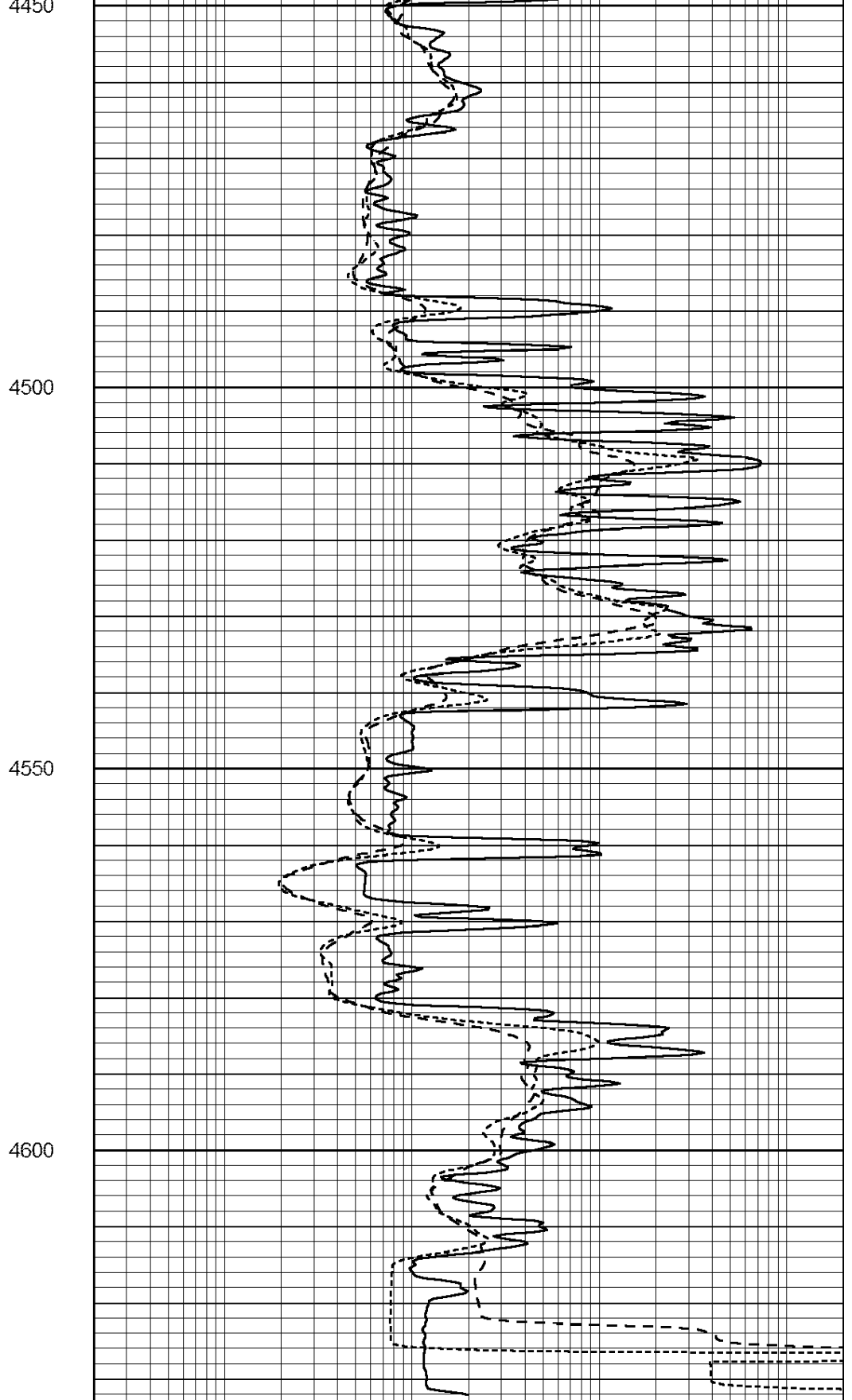
4350

4400





0	GAMMA RAY (GAPI)	150
-100	SP (mV)	100
-250	Rxo/Rt	50
0	MINMK	20



0.2	SHALLOW GUARD (Ohm-m)	2000
0.2	DEEP INDUCTION (Ohm-m)	2000
0.2	MEDIUM INDUCTION (Ohm-m)	2000