



# NABORS

## COMPLETION & PRODUCTION SERVICES CO.

### CORRELATION LOG

Company RITCHIE EXPLORATION, INC.  
 Well DON UNIT #1  
 Field ANTELOPE RIDGE  
 County GOVE  
 State KANSAS

Company RITCHIE EXPLORATION, INC.  
 Well DON UNIT #1  
 Field ANTELOPE RIDGE  
 County GOVE State KANSAS

Location: API # : 15-063-22130-00-00  
 1530' FSL & 2345' FEL  
 SW-NW-SE  
 SEC 22 TWP 13S RGE 31W  
 Permanent Datum GROUND LEVEL Elevation 2902  
 Log Measured From KELLY BUSHING 5' A.G.L.  
 Drilling Measured From KELLY BUSHING  
 Other Services  
 PERF  
 Elevation  
 K.B. 2907  
 D.F. 2905  
 G.L. 2902

Date	9-19-13					
Run Number	ONE					
Depth Driller	4725					
Depth Logger	4699					
Bottom Logged Interval	4697					
Top Log Interval	3450					
Open Hole Size	7-7/8"					
Type Fluid	WATER					
Density / Viscosity						
Max. Recorded Temp.						
Estimated Cement Top						
Time Well Ready						
Time Logger on Bottom	702					
Equipment Number	HAYS, KANSAS					
Location	THOMASON					
Recorded By	PETE FIORINI					
Witnessed By						
Run Number	Borehole Record		Tubing Record			
Bit	From	To	Size	Weight	From	To
Casing Record	Size	Wgt/Ft		Top	Bottom	
Surface String	8-5/8"	0		225		
Prot. String						
Production String	5-1/2"					
Liner						

<<< Fold Here >>>

All interpretations are opinions based on inferences from electrical or other measurements and we cannot and do not guarantee the accuracy or correctness of any interpretation, and we shall not, except in the case of gross or willful negligence on our part, be liable or responsible for any loss, costs, damages, or expenses incurred or sustained by anyone resulting from any interpretation made by any of our officers, agents or employees. These interpretations are also subject to our general terms and conditions set out in our current Price Schedule.

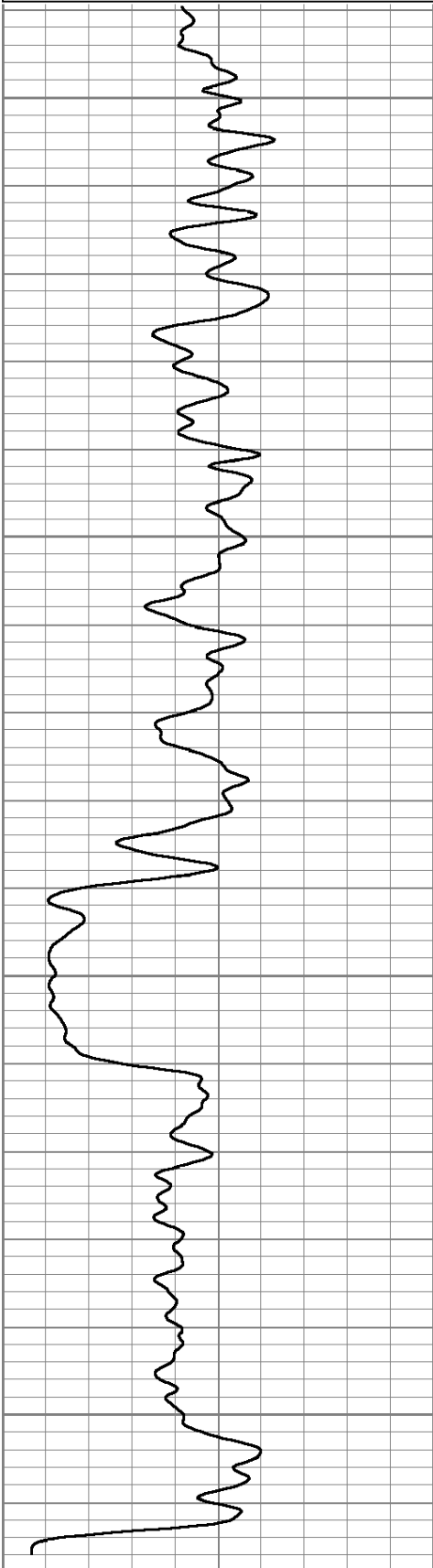
#### Comments

THANK YOU FOR USING NABORS COMPLETION & PRODUCTION SERVICES  
 DIRECTIONS  
 OAKLEY KS. 11 SOUTH TO GOVE RD. - 4 EAST TO RD.16 - 4 SOUTH TO RD. 0  
 1/2 EAST - NORTH INTO

Database File: 011763gr.db  
Dataset Pathname: pass6  
Presentation Format: gr-n-ccl  
Dataset Creation: Thu Sep 19 19:18:15 2013 by Log SCH 110223  
Charted by: Depth in Feet scaled 1:240

0 GR (GAPI) 150

5 CCL -5

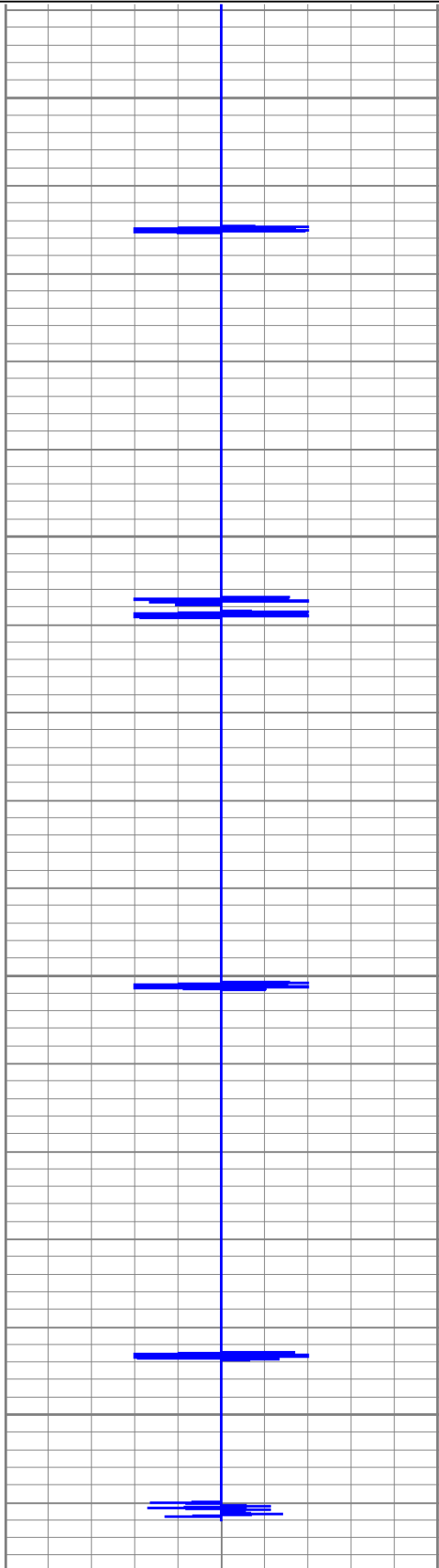


2300

2350

2400

2450



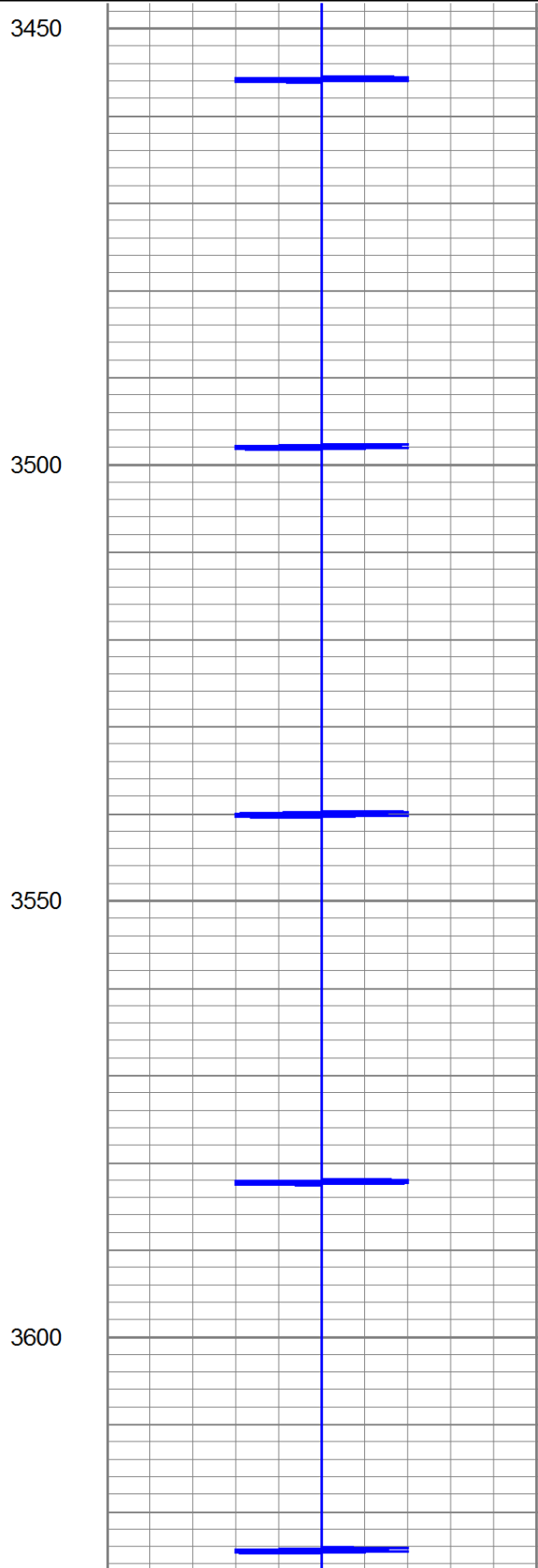
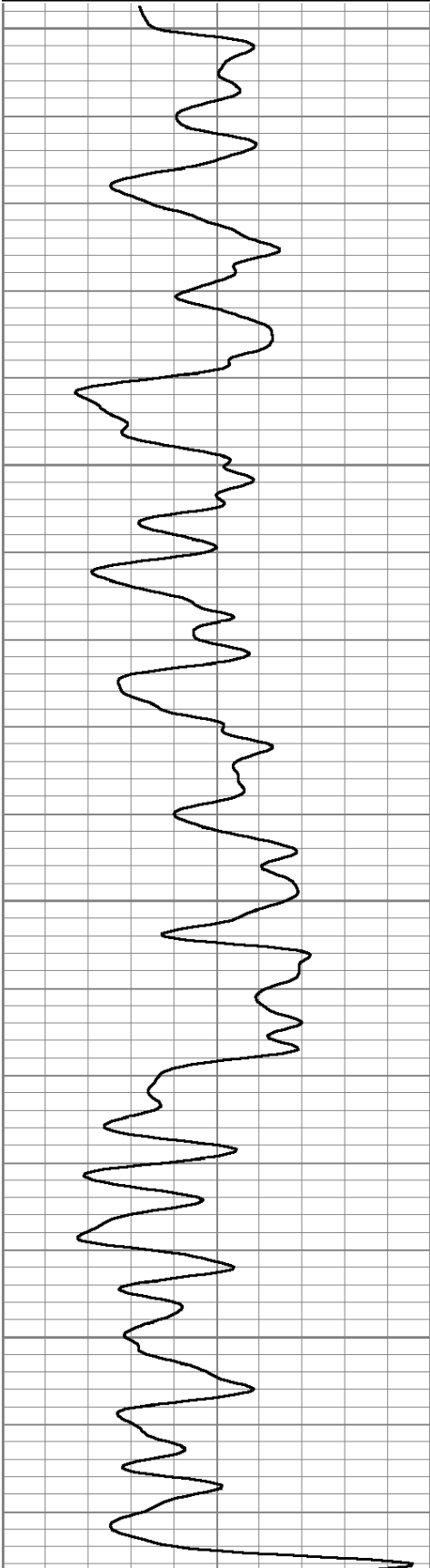
0 GR (GAPI) 150

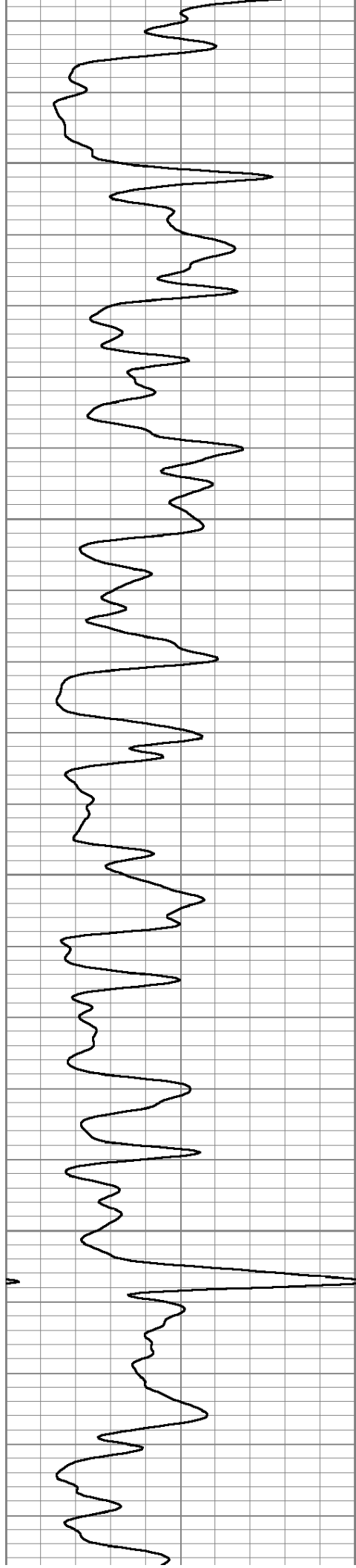
5 CCL -5

Database File: 011763gr.db  
Dataset Pathname: pass5  
Presentation Format: gr-n-ccl  
Dataset Creation: Thu Sep 19 18:41:30 2013 by Log SCH 110223  
Charted by: Depth in Feet scaled 1:240

0 GR (GAPI) 150

5 CCL -5



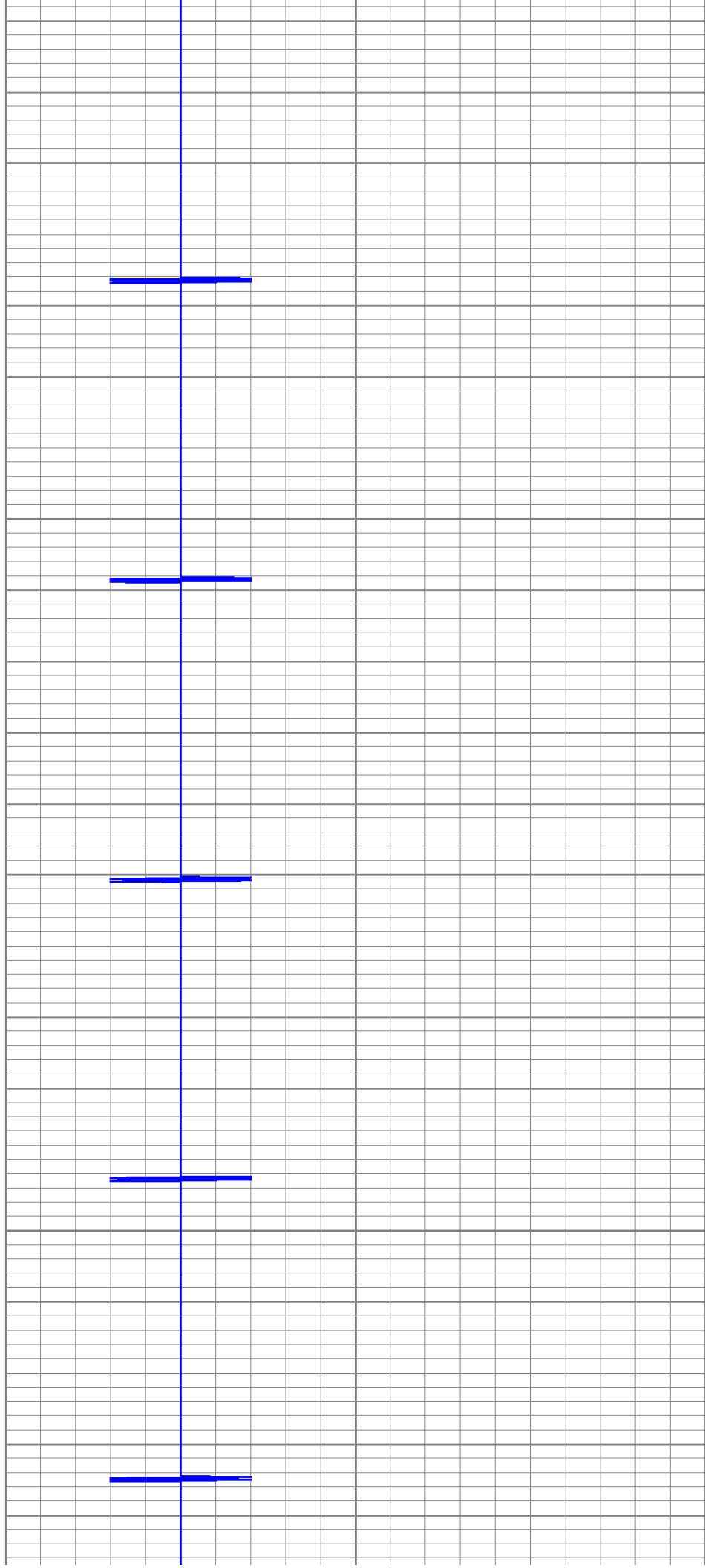


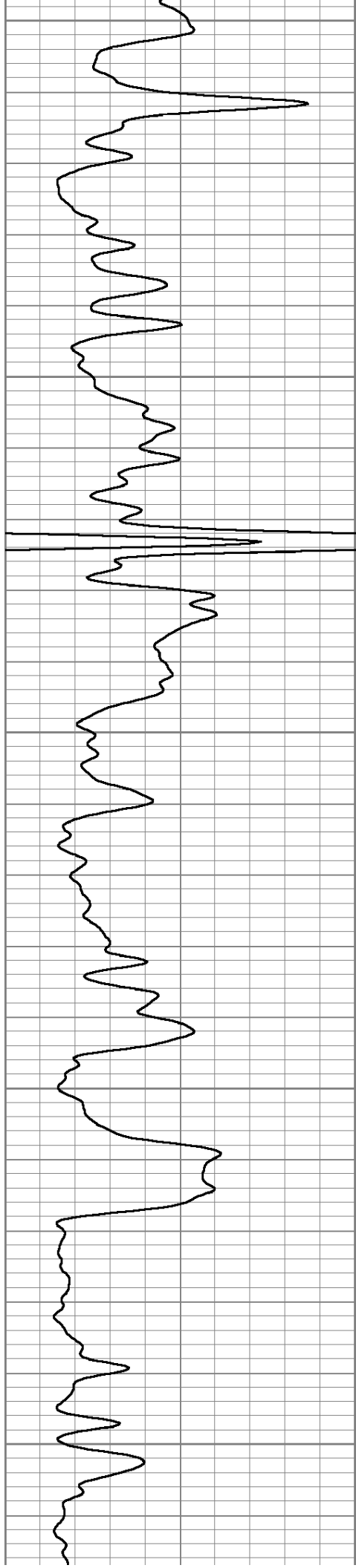
3650

3700

3750

3800





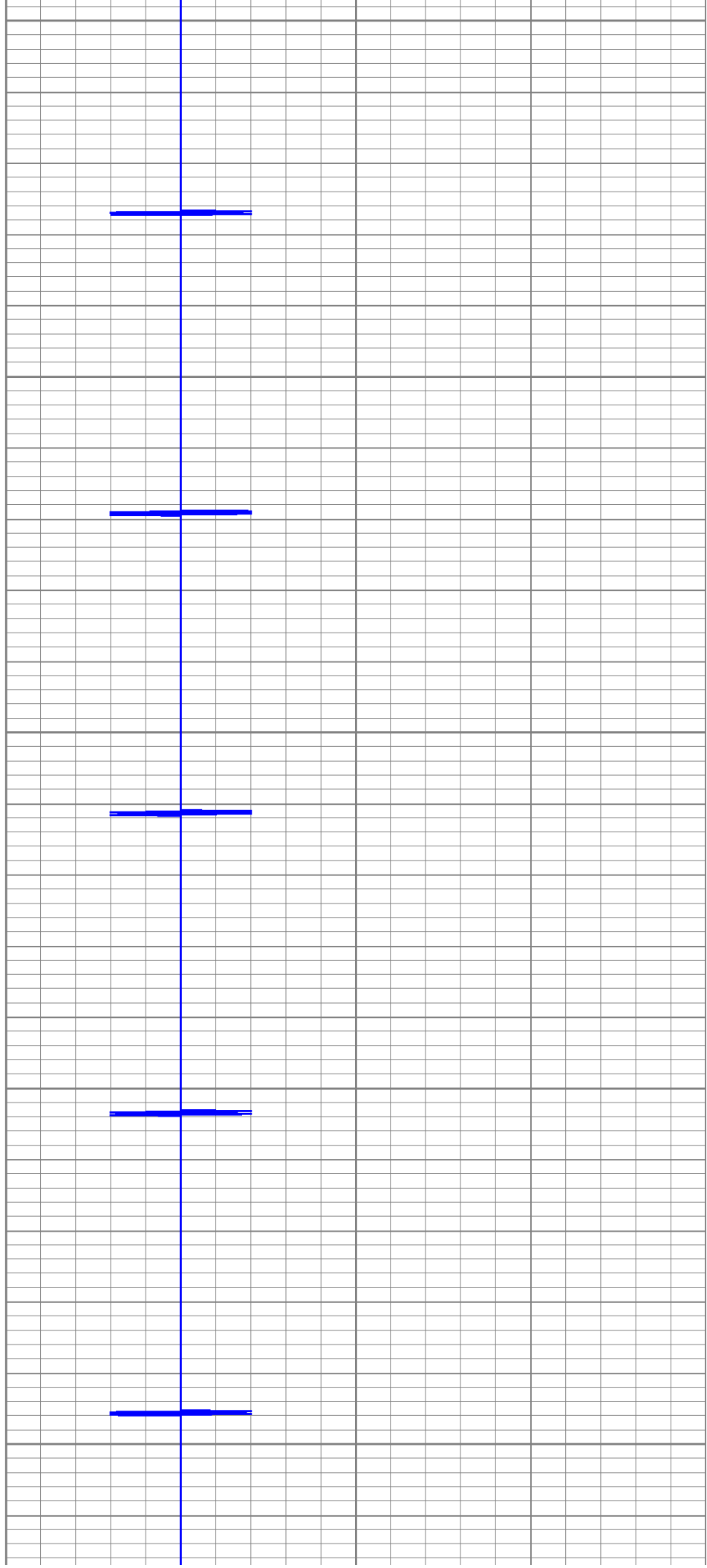
3850

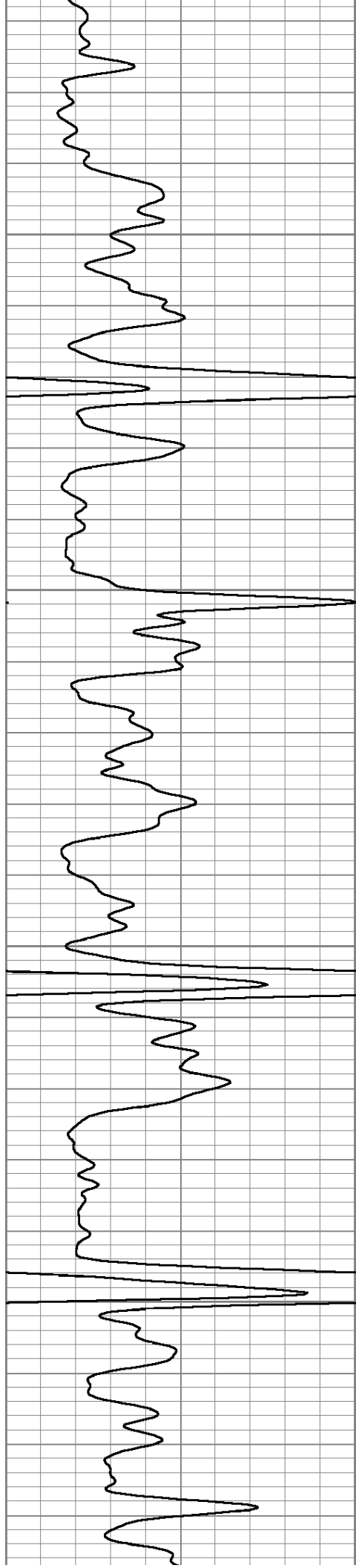
3900

3950

4000

4050



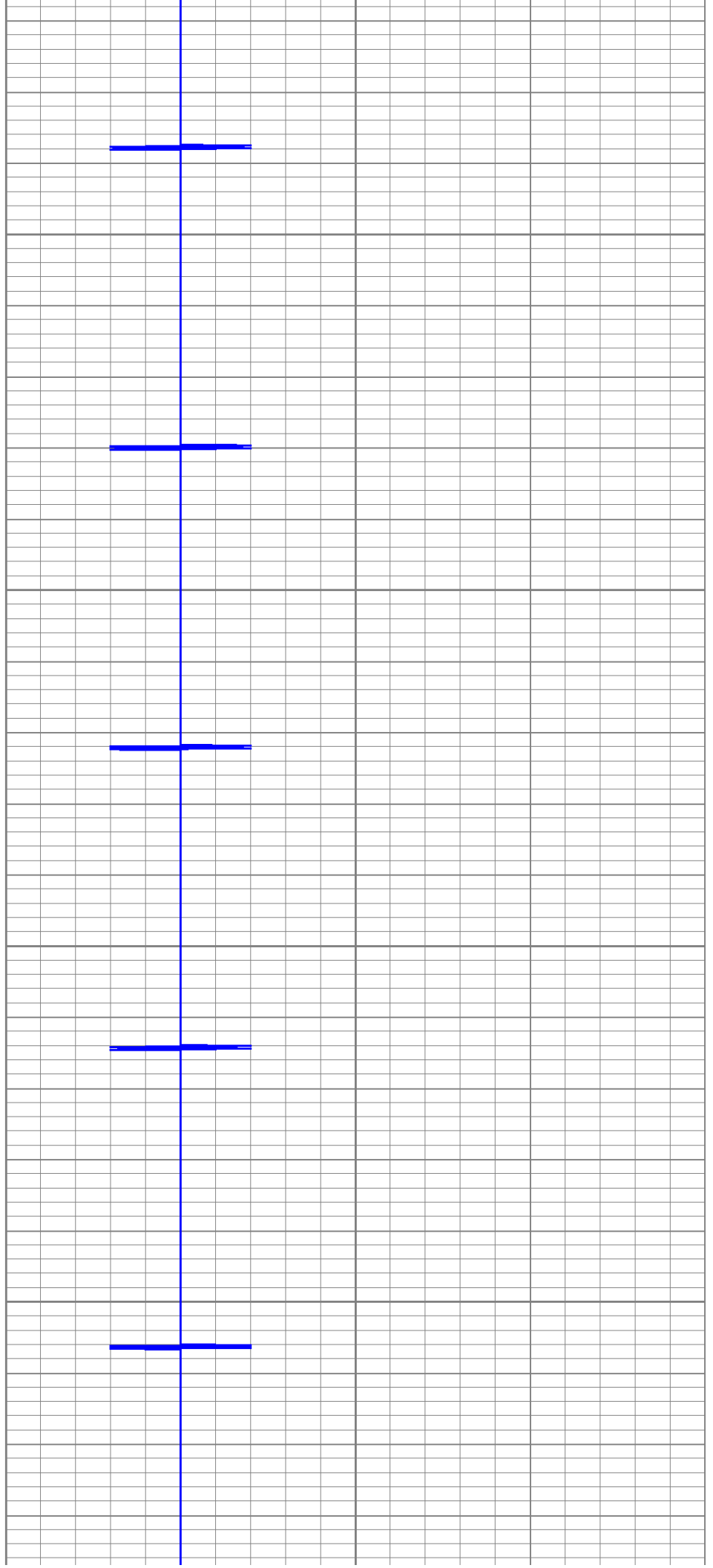


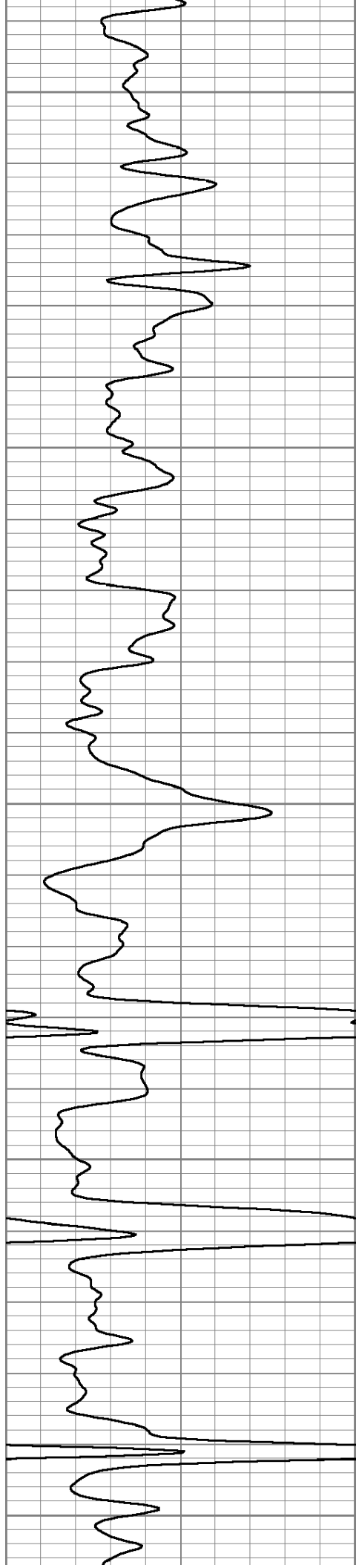
4100

4150

4200

4250





4300

4350

4400

4450

4500

