



**MIDWEST SURVEYS**  
 LOGGING - OPERATING - CONSULTING SERVICES  
 P.O. Box 66, Osawatomie, KS 66064  
 913 / 755 - 2128

**GAMMA RAY / NEUTRON / CCL**

File No. \_\_\_\_\_

Company **Haas Petroleum, LLC**

Well **Zastrow No. 40-HP**

Field **Garnett Shoestring**

County **Anderson** State **Kansas**

Location **185' FNL & 275' FEL**

Other Services **Perforate**

Sec. **14** Typ. **20s** Rq. **20e**

Permanent Datum **GL** Elevation **NA**

Log Measured From **GL**

Drilling Measured From **GL**

Elevation **K.B. NA**

**D.F. NA**

**G.L. NA**

Date **09-19-2013**

Run Number **One**

Depth Driller **780.0**

Depth Logger **754.9**

Bottom Logged Interval **753.9**

Top Log Interval **20.0**

Fluid Level **Full**

Type Fluid **Water**

Density / Viscosity **NA**

Salinity - PPM Cl **NA**

Max Recorded Temp **NA**

Estimated Cement Top **0.0**

Equipment No. **107** Location **Osawatimie**

Recorded By **Steve Mandisch**

Witnessed By **John Haas**

BORE-HOLE RECORD

CASINGS RECORD

NO.	BIT	FROM	TO	SIZE	WGT.	FROM	TO
One	9.875"	0.0	20.0	7.00"	17.0#	0.0	20.0
Two	5.625"	20.0	780.0	2.875"	6.5#	0.0	757.0

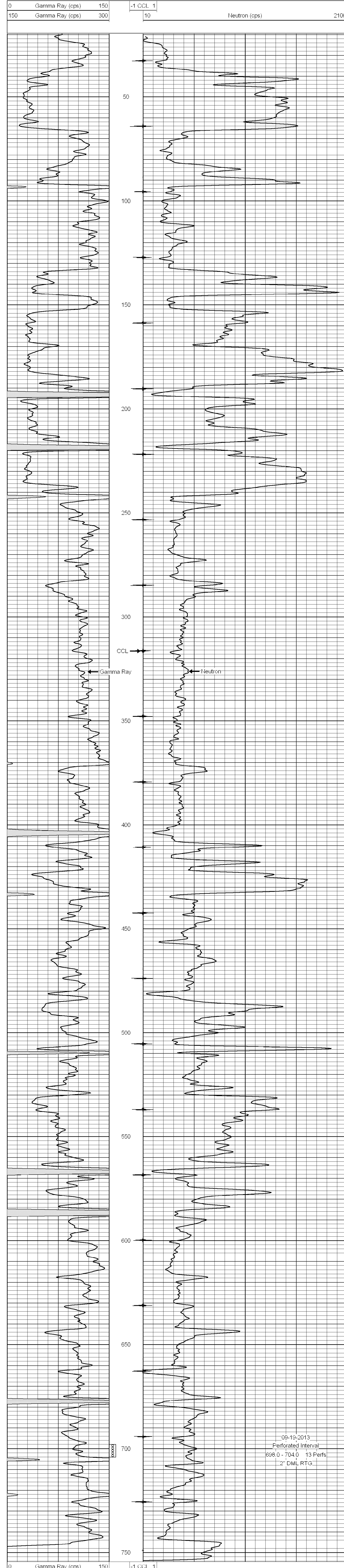
<<< Fold Here >>>

All interpretations are opinions based on inferences from electrical or other measurements and we cannot and do not guarantee the accuracy or correctness of any interpretation, and we shall not, except in the case of gross or willful negligence on our part, be liable or responsible for any loss, costs, damages, or expenses incurred or sustained by anyone resulting from any interpretation made by any of our officers, agents or employees. These interpretations are also subject to our general terms and conditions set out in our current Price Schedule.

**Comments**

Drilling Contractor :  
 Town Oilfield Services, Inc.

Database File: **zastrow40hp.db**  
 Dataset Pathname: **pass1**  
 Presentation Format: **gr-n-ccl**  
 Dataset Creation: **Thu Sep 19 15:39:51 2013 by Log SCH 111116**  
 Charted by: **Depth in Feet scaled 1:240**



09-19-2013  
 Perforated Interval  
 698.0 - 704.0 13 Perfs  
 2' DML RTG

