



Pioneer Energy Services

## Dual Compensated Porosity Log

API No.	15-051-26,557-00-00		
Company	TDL, Inc.		
Well	Frieda No. 1		
Field	Schoenchen Townsite		
County	Eljis	State	Kansas
Location	NE-SW-SW-NW 2050' FL & 615' FWL		
Sec: 28	Twp: 15S	Rge: 18W	Other Services DILMEL

Permanent Datum	Ground Level	Elevation 1941
Log Measured From	Kelly Bushing	10 Ft. Above Perm. Datum
Drilling Measured From	Kelly Bushing	

Date	9/11/13
Run Number	One
Type Log	CNL / CDL
Depth Driller	3750
Depth Logger	3750
Bottom Logged Interval	3729
Top Logged Interval	2800
Type Fluid In Hole	Chemical
Salinity, PPM CL	4,800
Density	9.4
Level	Full
Max. Rec. Temp. F	114
Operating Rig Time	3 1/2 Hours
Equipment -- Location	10 Hays
Recorded By	J. Henrickson
Witnessed By	Herb Deines

Borehole Record				Casing Record			
Run No.	Bit	From	To	Size	Wgt.	From	To
One	12.25	00	1118	8.625	23#	00	1118
Two	7.875	1118	TD				

<<< Fold Here >>>

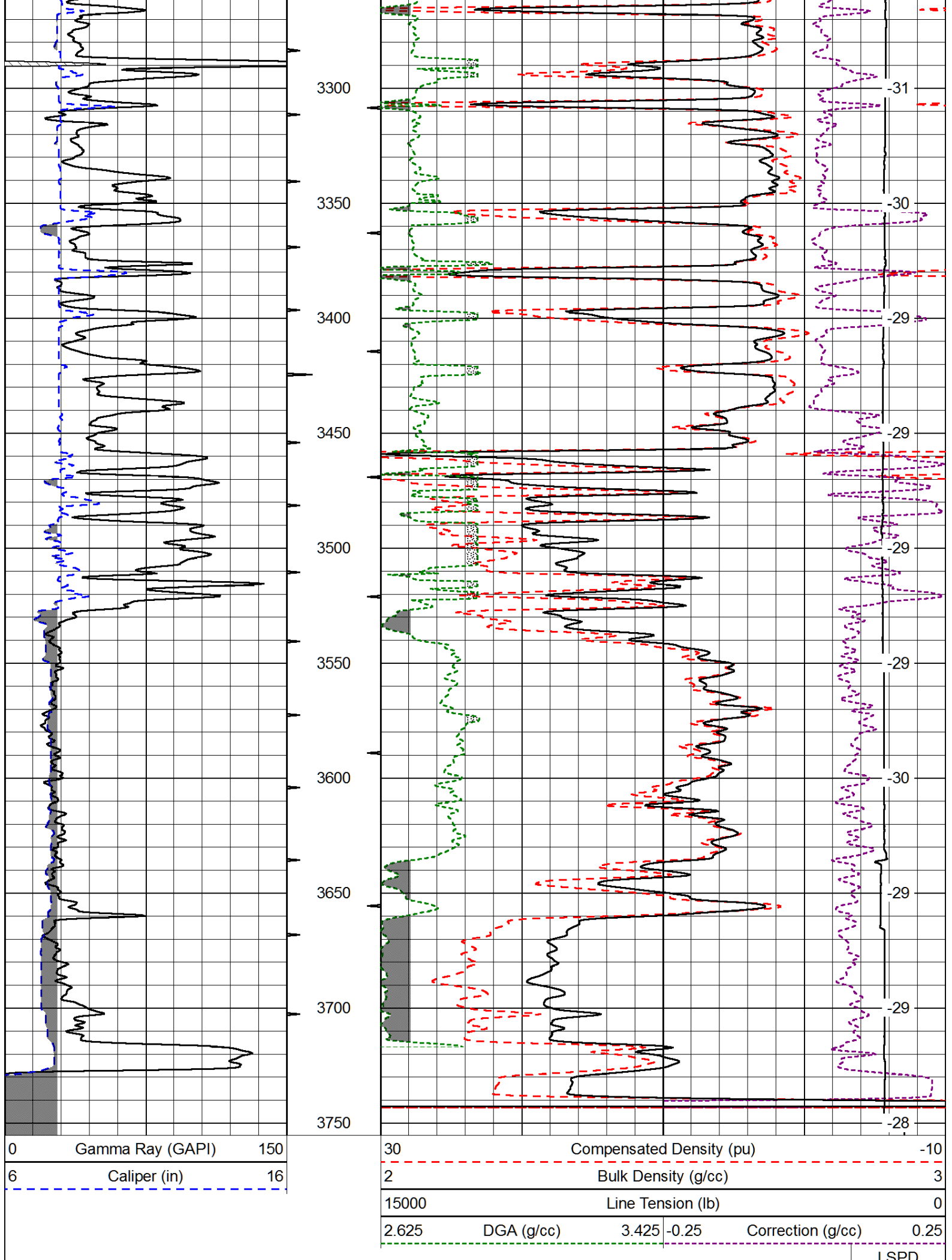
All interpretations are opinions based on inferences from electrical or other measurements and we cannot and do not guarantee the accuracy or correctness of any interpretation, and we shall not, except in the case of gross or willful negligence on our part, be liable or responsible for any loss, costs, damages, or expenses incurred or sustained by anyone resulting from any interpretation made by any of our officers, agents or employees. These interpretations are also subject to our general terms and conditions set out in our current Price Schedule.

### Comments

Thank you for using Log-Tech, Inc.  
 (785) 625-3858  
  
 Hays Kansas  
 From Shop, South on 240th to Stop Sign, 4 1/4 South, East Into

Database File: tdi\_frieda\_1hd.db  
 Dataset Pathname: DIL/tdistk  
 Presentation Format: cdl  
 Dataset Creation: Thu Sep 12 00:34:24 2013  
 Charted by: Depth in Feet scaled 1:600



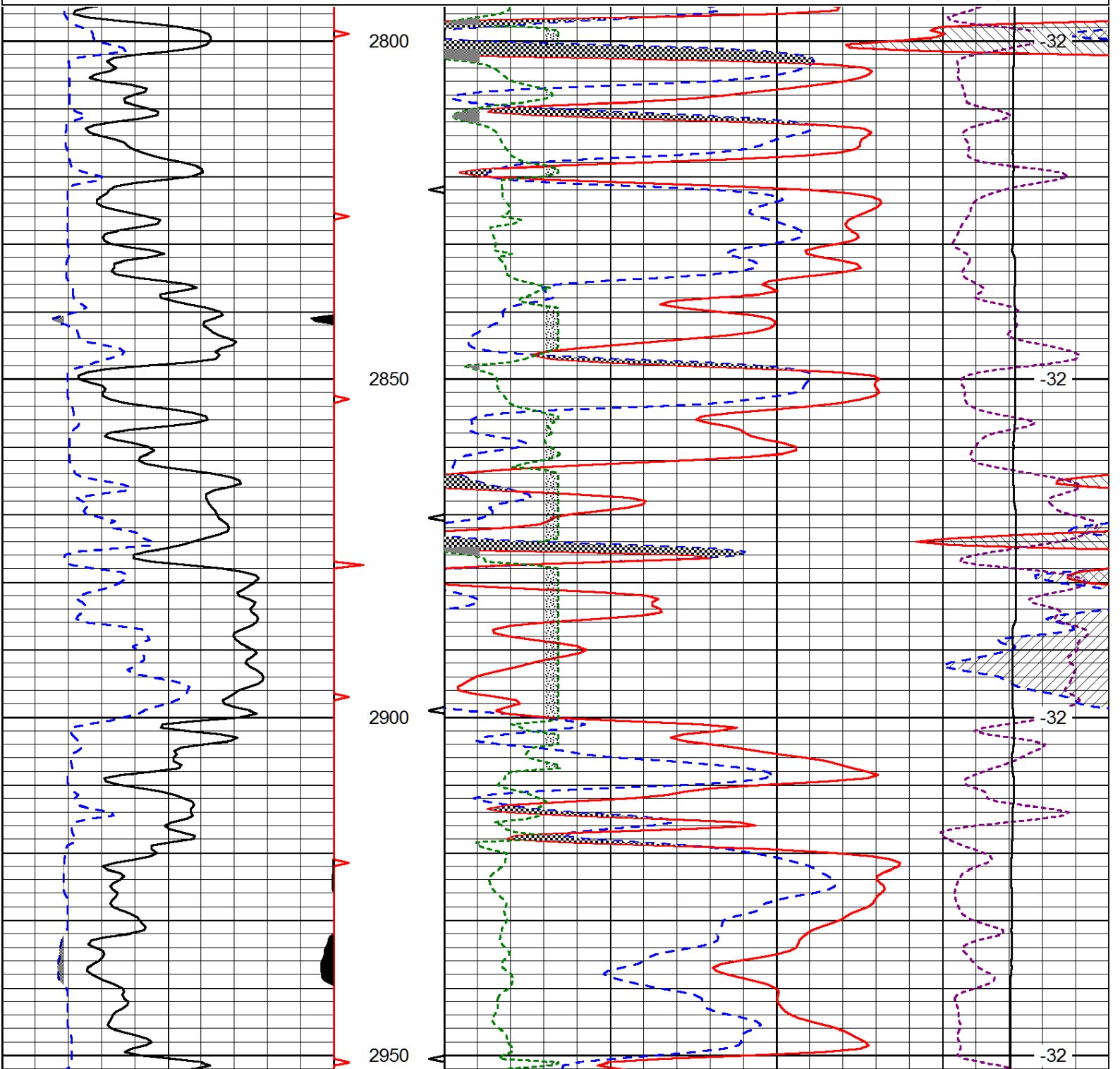


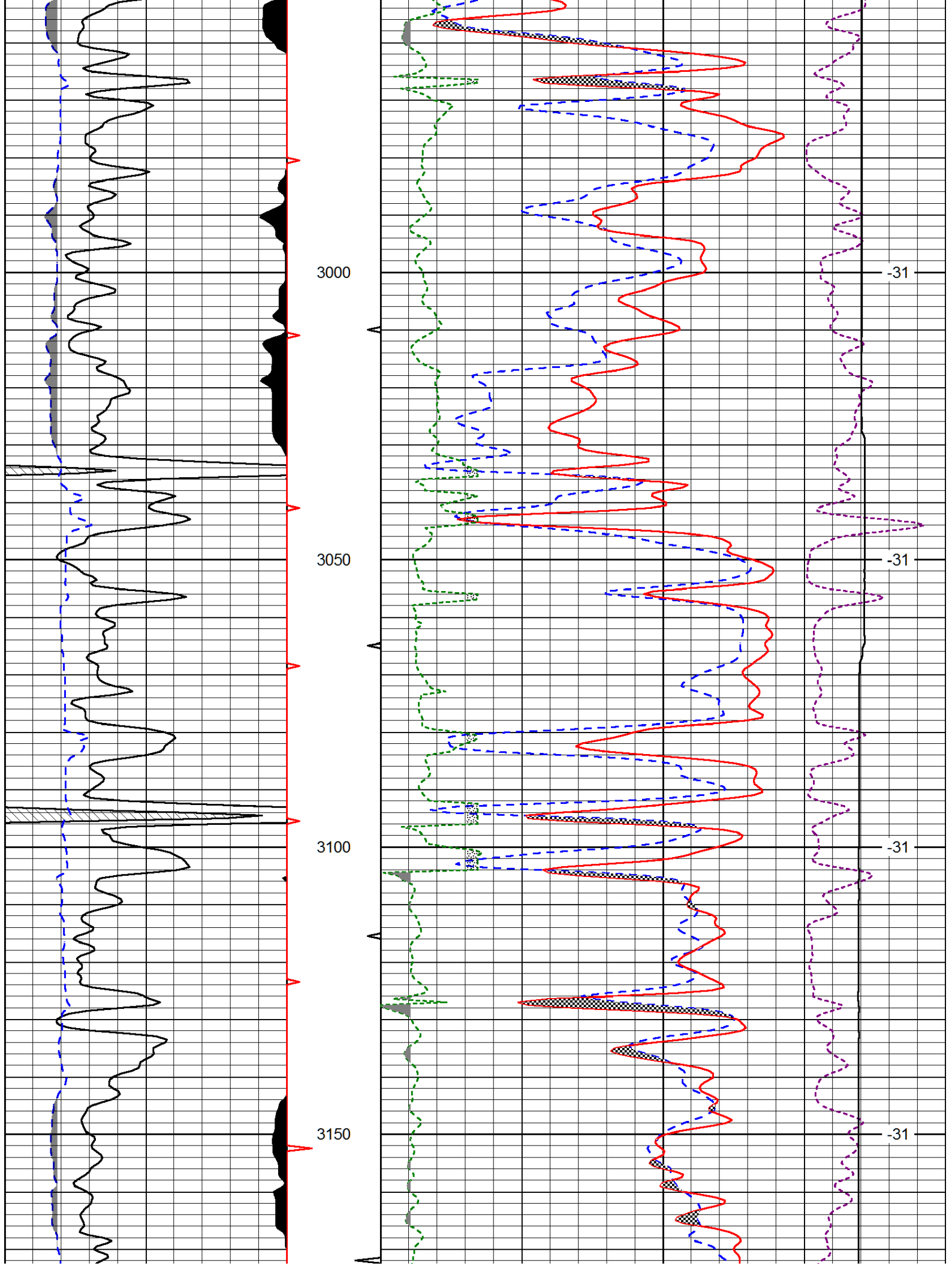
Database File: tdi\_frieda\_1hd.db  
Dataset Pathname: DIL/tdistk  
Presentation Format: cndlspec  
Dataset Creation: Thu Sep 12 00:34:24 2013  
Charted by: Depth in Feet scaled 1:240

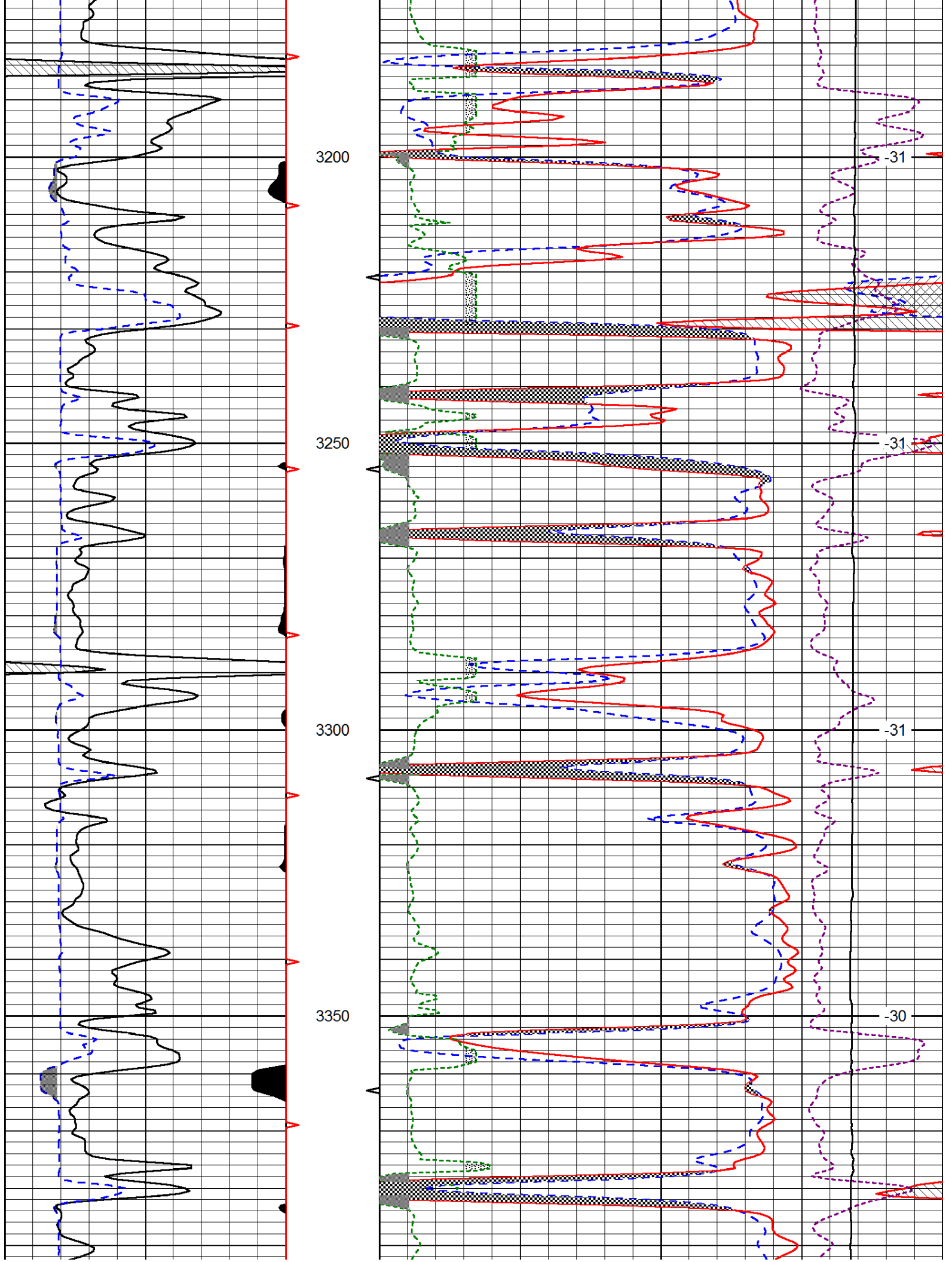
0	Gamma Ray (GAPI)	150
6	Caliper (in)	16

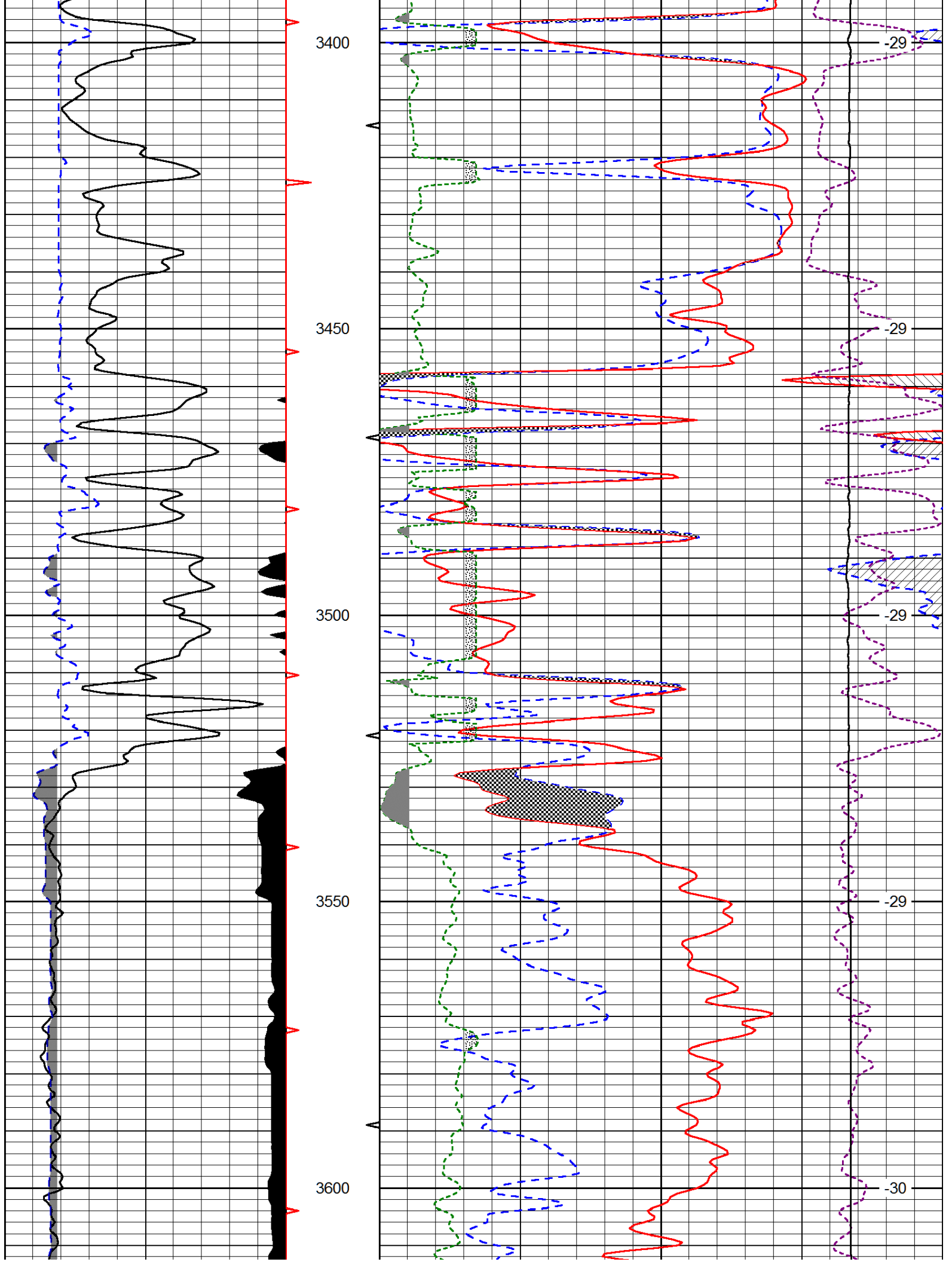
30	CNLS (pu)			-10	
30	Compensated Density (2.71 ma) (pu)			-10	
2.625	DGA (g/cc)	3.425	-0.25	Correction (g/cc)	0.25
10000	Line Tension (lb)			0	

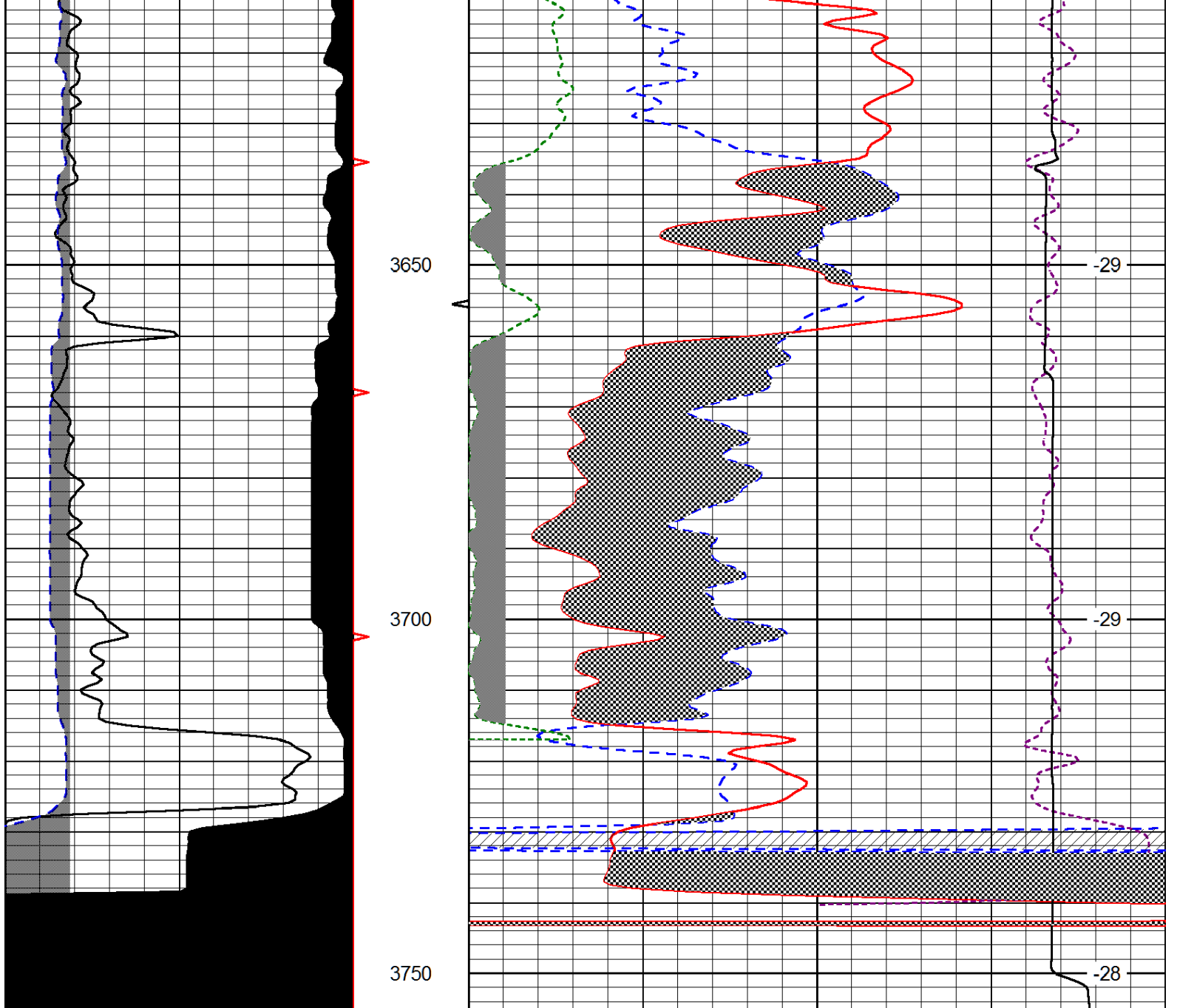
LSPD  
(ft/min)











0	Gamma Ray (GAPI)	150
6	Caliper (in)	16

30	CNLS (pu)			-10	
30	Compensated Density (2.71 ma) (pu)			-10	
2.625	DGA (g/cc)	3.425	-0.25	Correction (g/cc)	0.25
10000	Line Tension (lb)			0	

LSPD  
(ft/min)