



Pioneer Energy Services

Dual Induction Log

API No.	15-051-26559-00-00		
Company	TDL, Inc.		
Well	Marsha #1		
Field	Schoenchen West		
County	Elis	State	Kansas
Location	330' FSL & 850' FWL		
Sec: 21	Twp: 15 S	Rge: 18 W	Other Services CNL/CDL MEL
Permanent Datum	Ground Level	Elevation 1950	Elevation
Log Measured From	Kelly Bushing	10 Ft. Above Perm. Datum	K.B. 1960
Drilling Measured From	Kelly Bushing		D.F. 1950
			G.L. 1950

Date	08-26-2013	
Run Number	One	
Depth Driller	3695	
Depth Logger	3693	
Bottom Logged Interval	3692	
Top Log Interval	1095	
Casing Driller	8.625 @ 1135	
Casing Logger	1131	
Bit Size	7.875	
Type Fluid in Hole	Chemical	
Salinity, ppm CL	3500	
Density / Viscosity	9.2	59
pH / Fluid Loss	10.5	7.6
Source of Sample	Flowline	
Rm @ Meas. Temp	0.60 @ 86	
Rmf @ Meas. Temp	0.45 @ 86	
Rmc @ Meas. Temp	0.81 @ 86	
Source of Rmf / Rmc	Charts	
Rm @ BHT	0.45 @ 115	
Operating Rig Time	3 Hours	
Max Rec. Temp. F	115	
Equipment Number	91	
Location	Hays	
Recorded By	D. Schmidt	
Witnessed By	Tom Denning	

<<< Fold Here >>>

All interpretations are opinions based on inferences from electrical or other measurements and we cannot and do not guarantee the accuracy or correctness of any interpretation, and we shall not, except in the case of gross or willful negligence on our part, be liable or responsible for any loss, costs, damages, or expenses incurred or sustained by anyone resulting from any interpretation made by any of our officers, agents or employees. These interpretations are also subject to our general terms and conditions set out in our current Price Schedule.

Comments

Thank you for using Log-Tech, Inc.
 (785) 625-3858

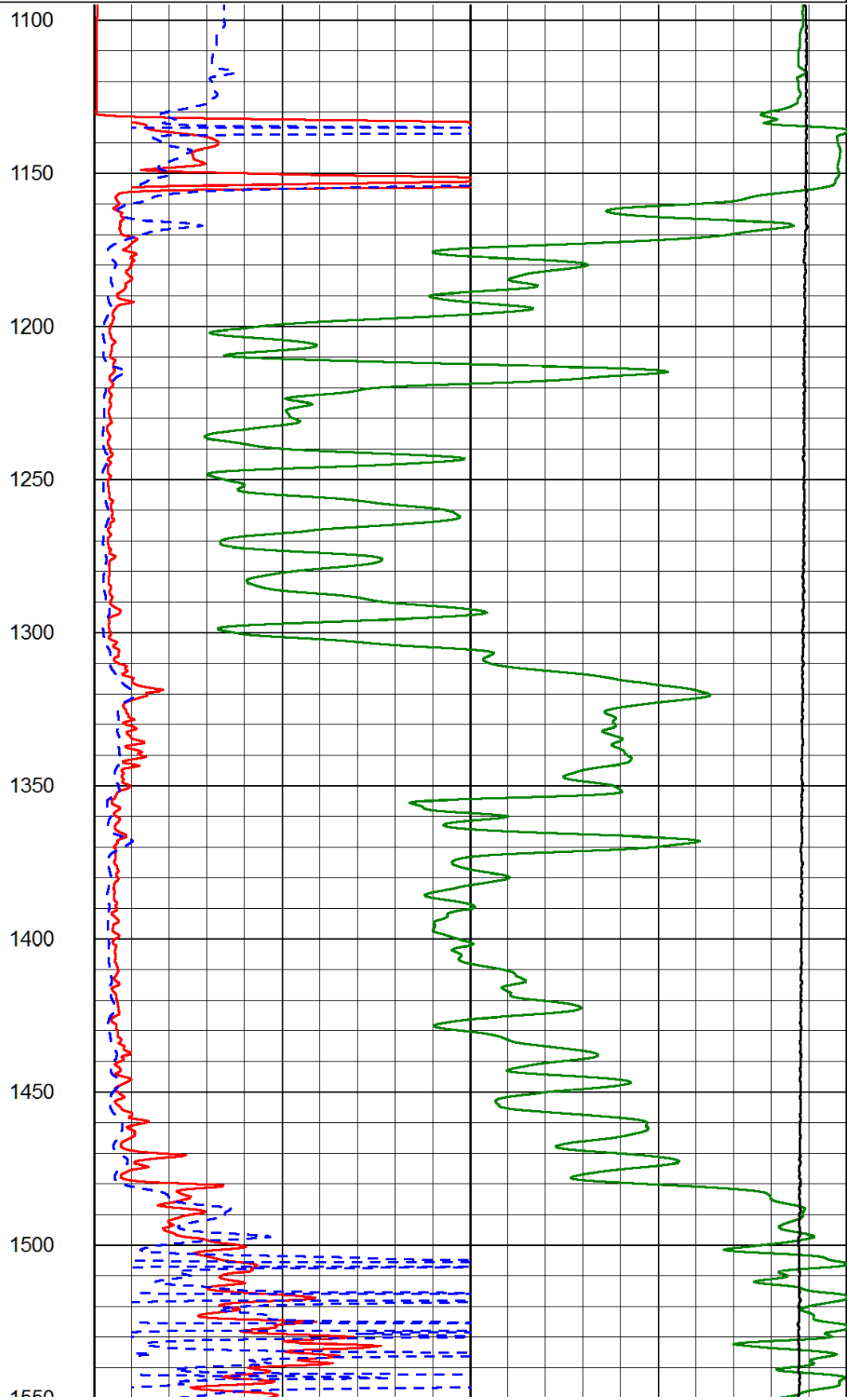
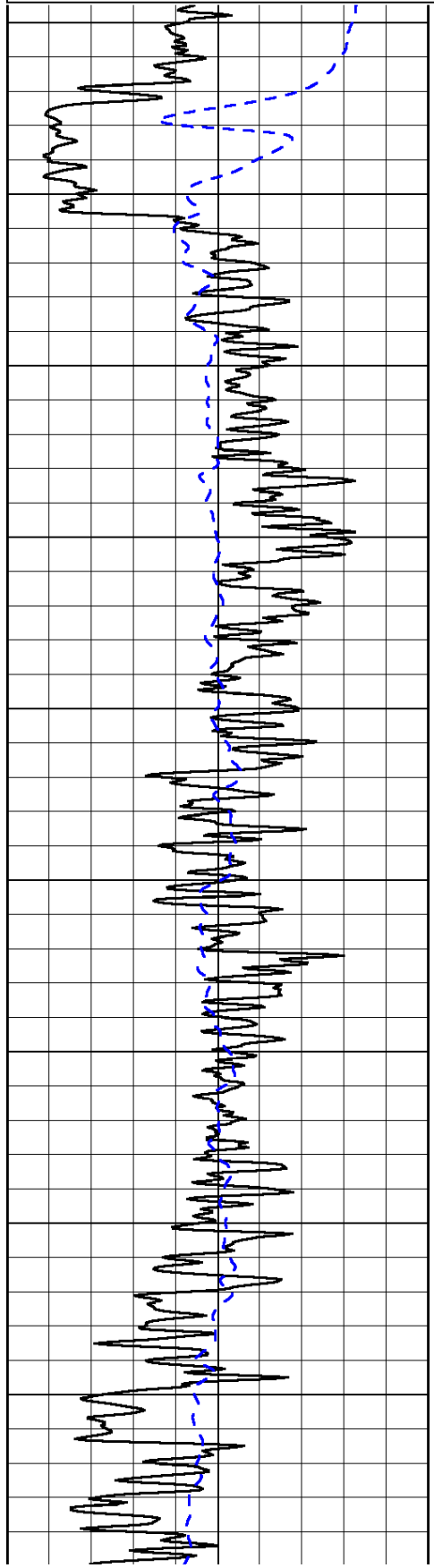
 Hays,
 South on Hwy 183 to Smoky Hill River Rd, 3/4 West,
 North into

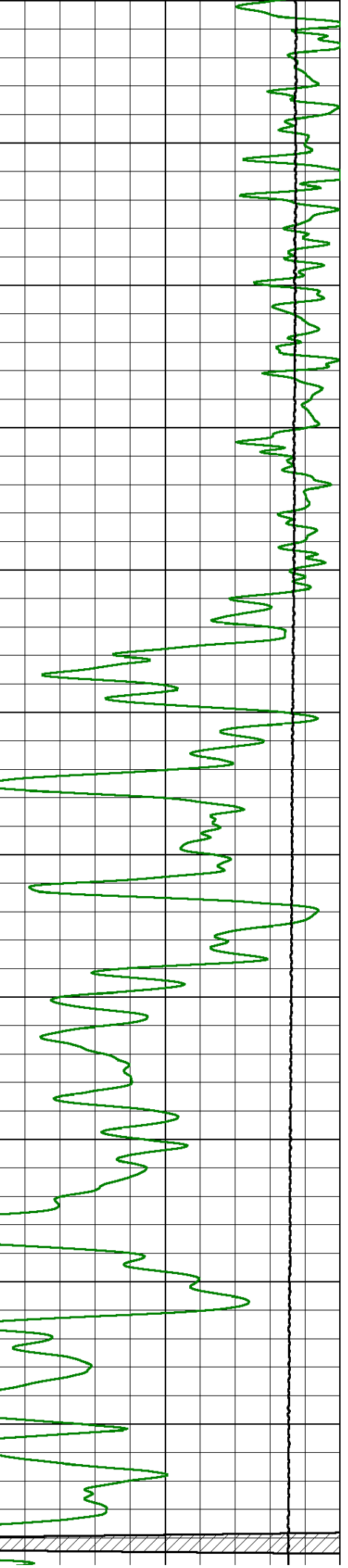
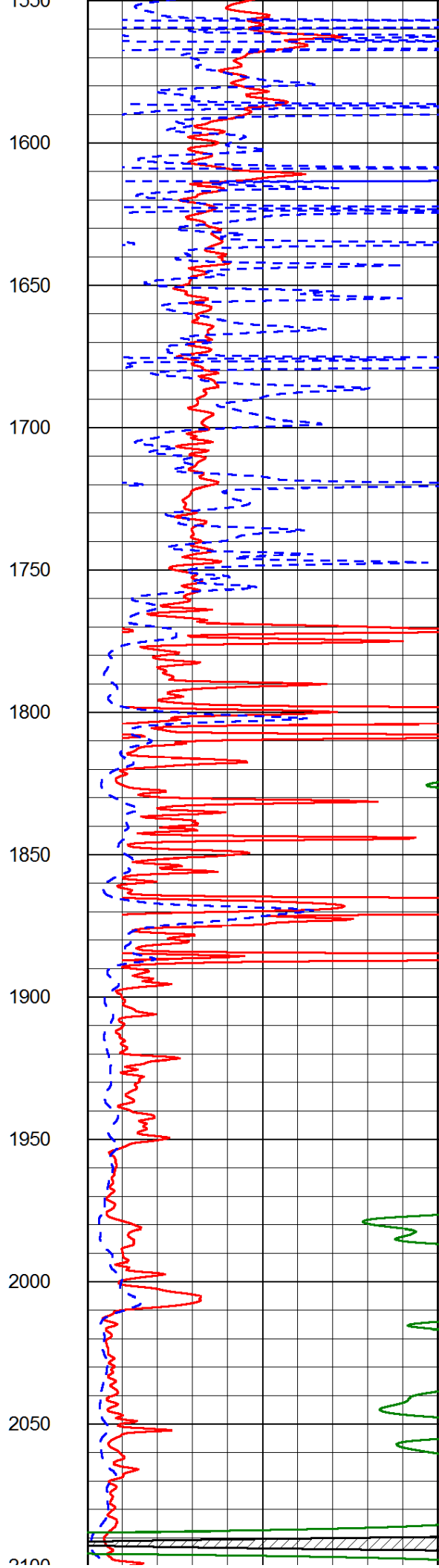
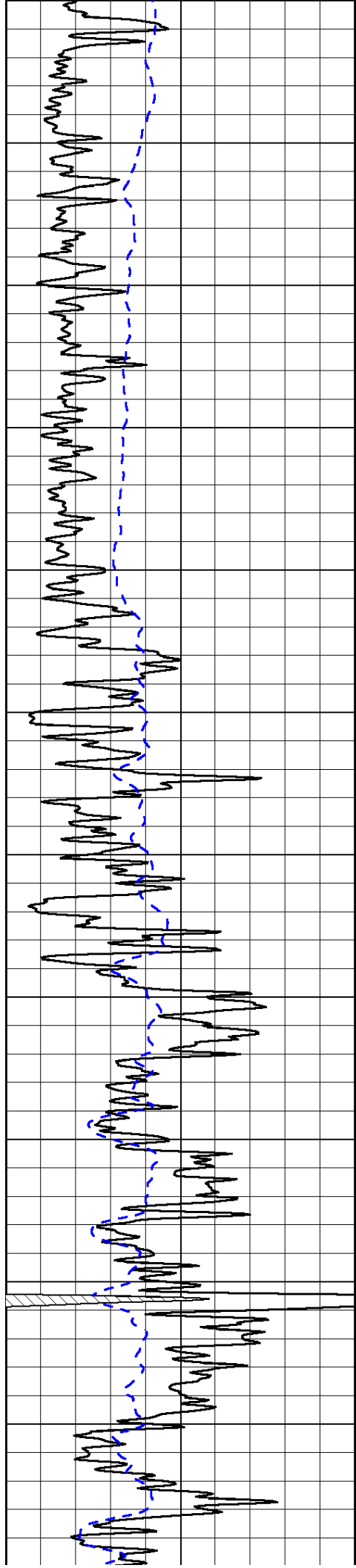
0	Gamma Ray (GAPI)	150
-200	SP (mV)	0

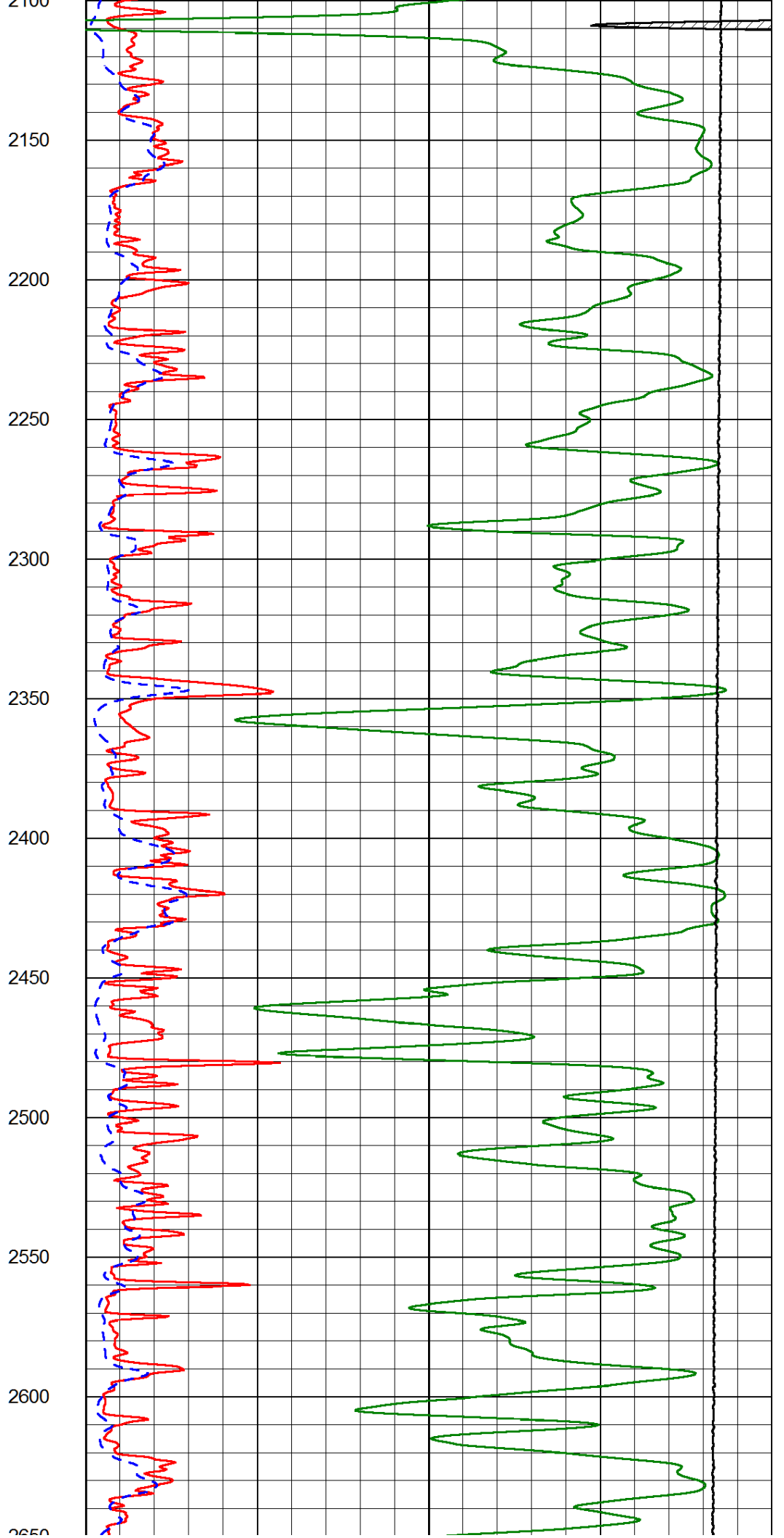
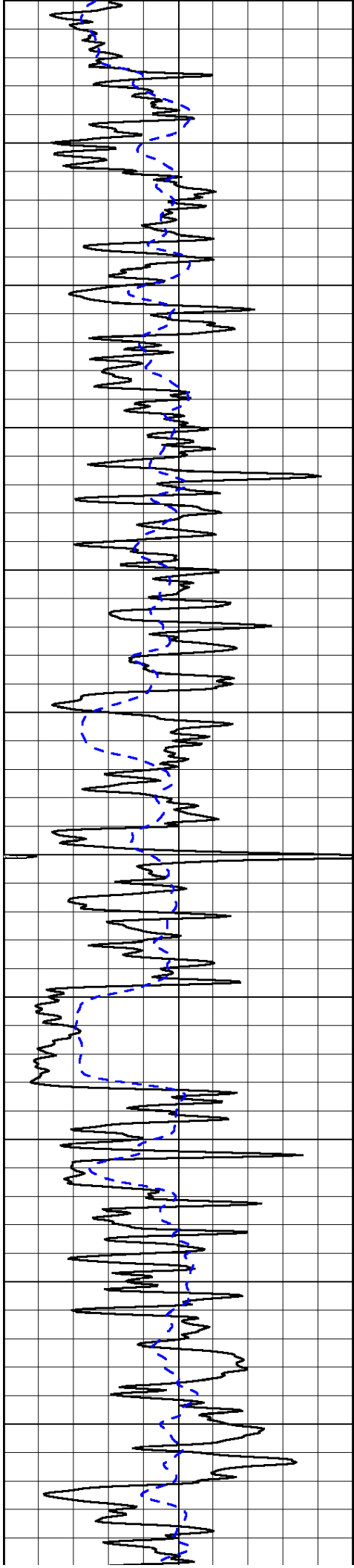
0	Shallow Resistivity (Ohm-m)	50
0	Deep Resistivity (Ohm-m)	50

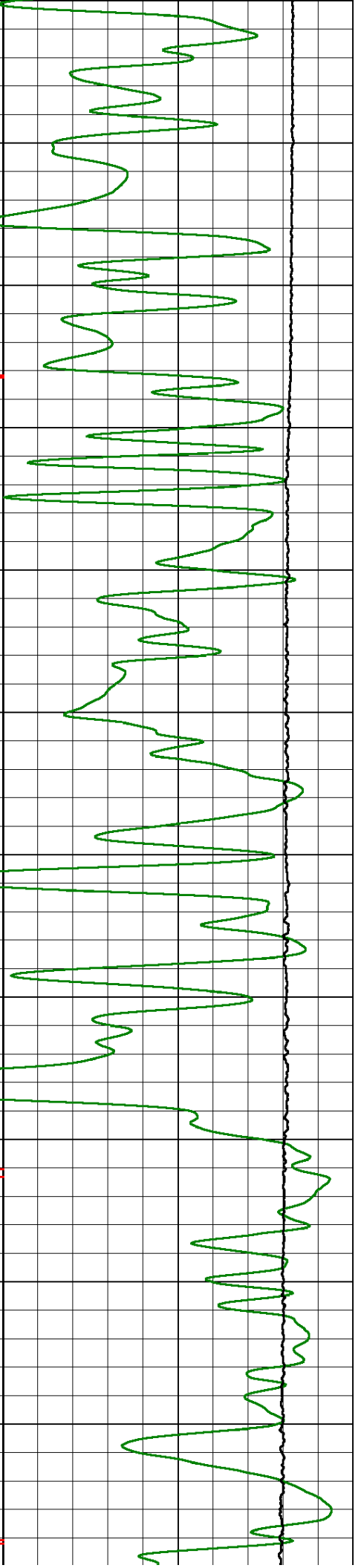
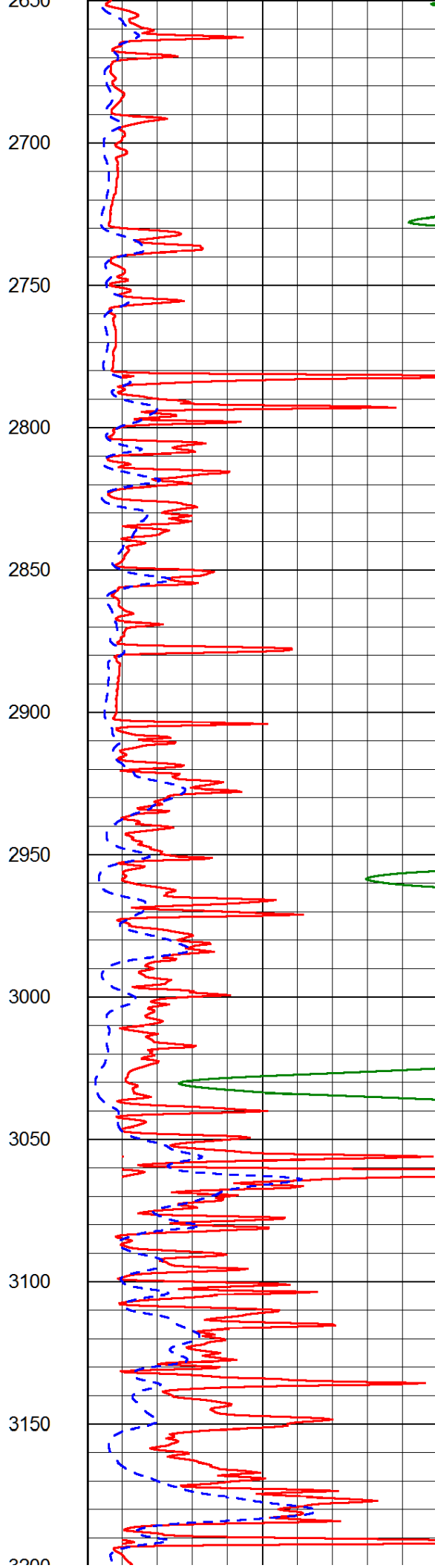
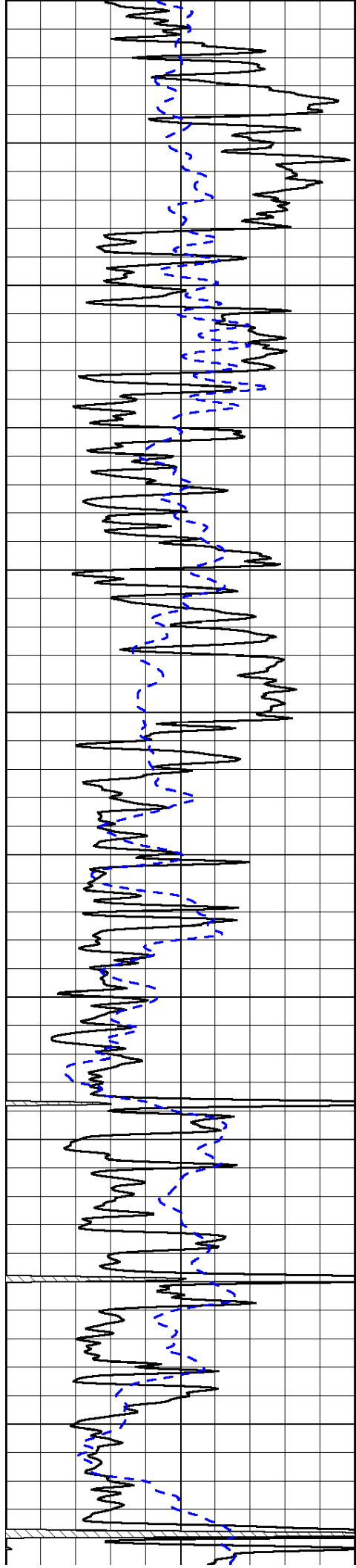
1000	Conductivity (Ohm-m)	0
15000	Line Tension (lb)	0

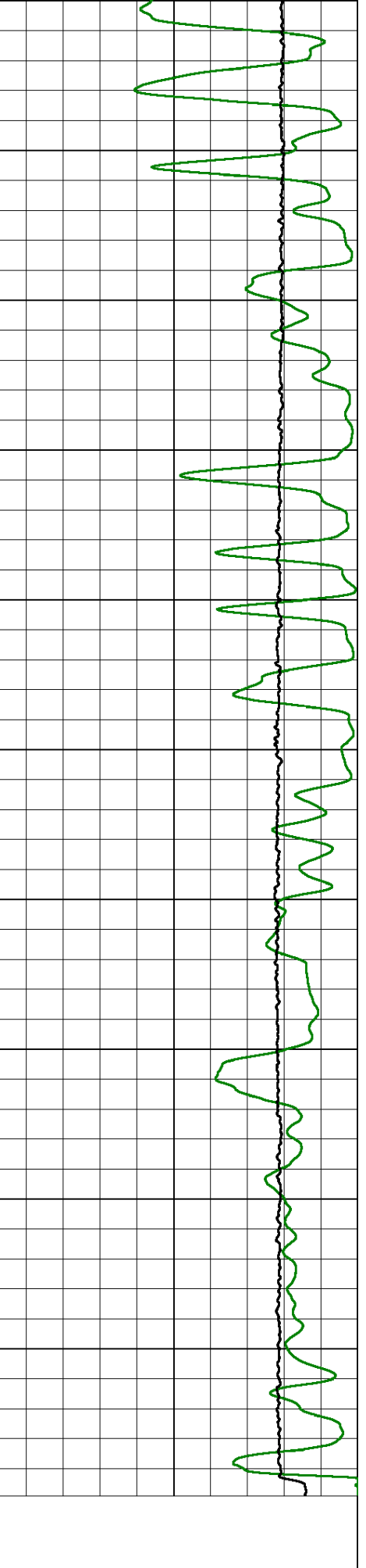
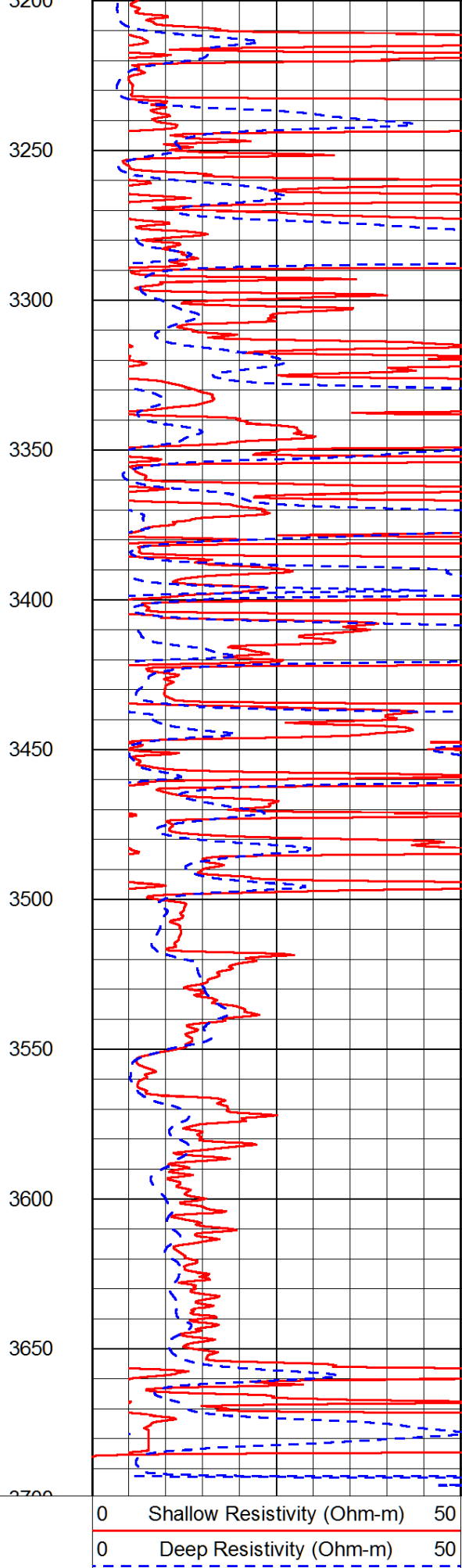
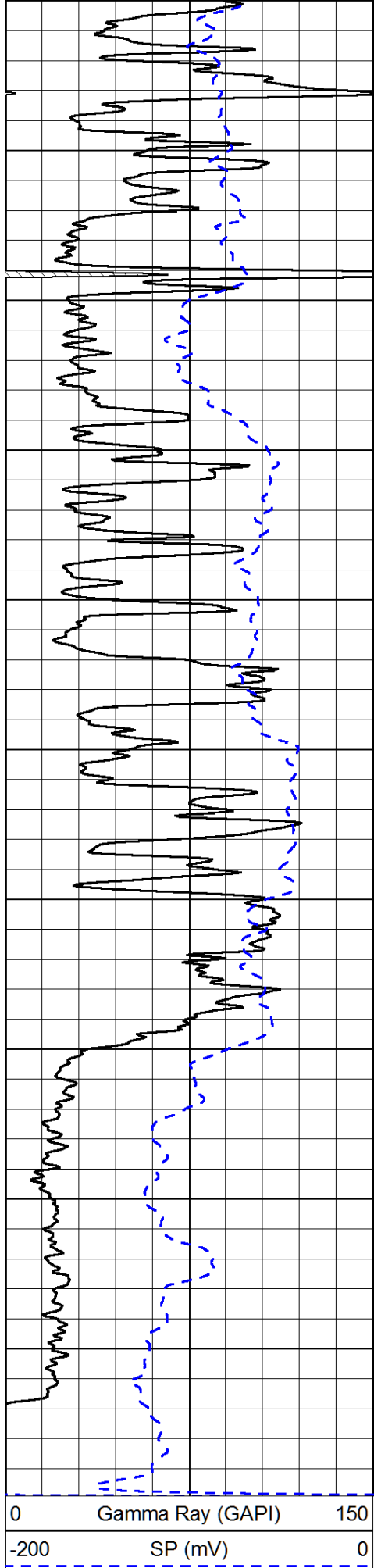
Shallow Resistivity		
50	(Ohm-m)	500
50	Deep Resistivity (Ohm-m)	500











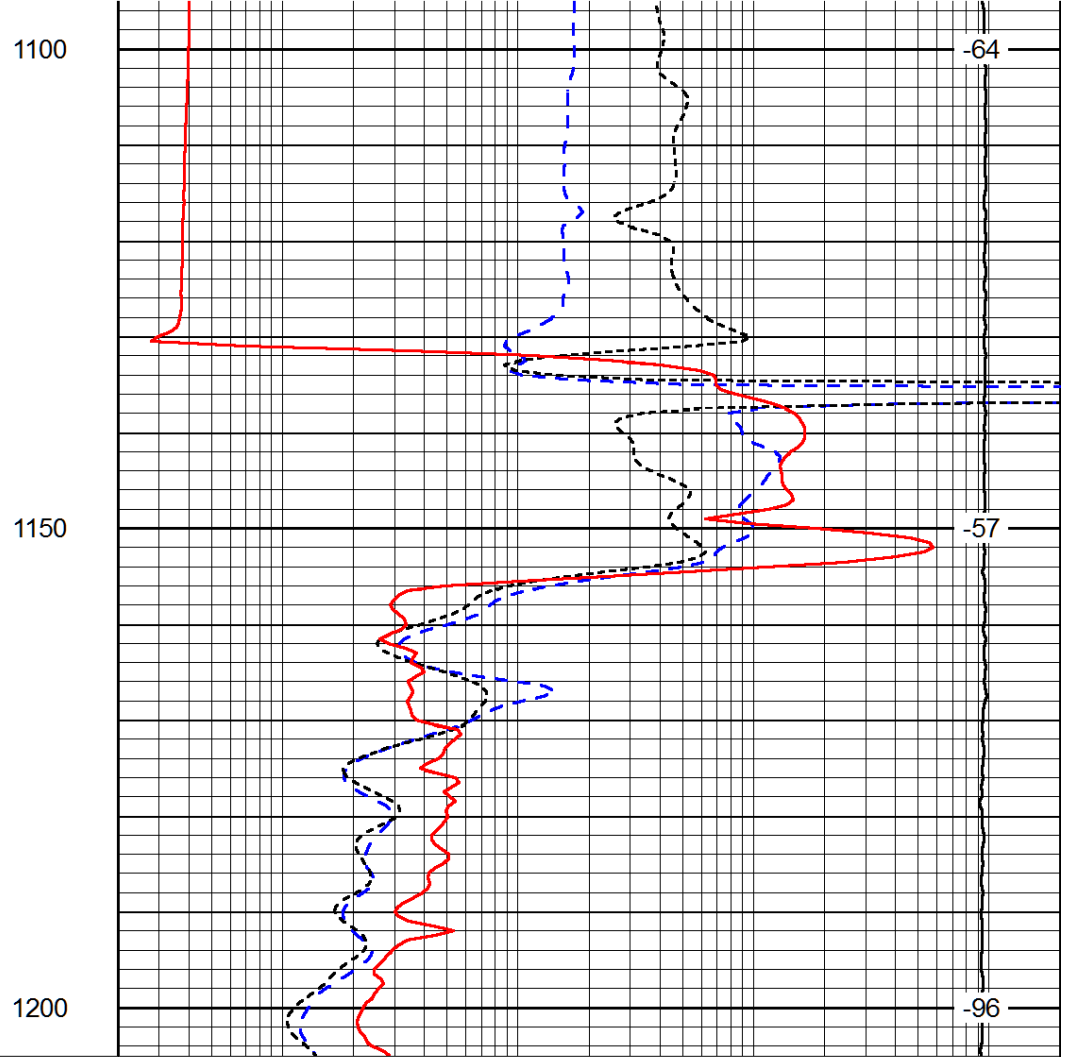
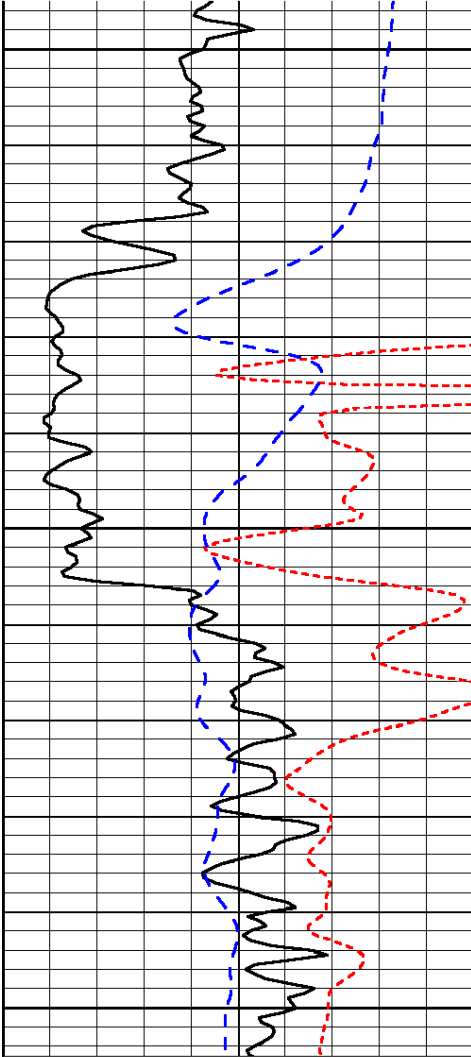
Shallow Resistivity		
50	(Ohm-m)	500
50	Deep Resistivity (Ohm-m)	500

Database File: tdi_082613hd.db
 Dataset Pathname: dil/tdistck
 Presentation Format: dil
 Dataset Creation: Mon Aug 26 18:14:27 2013
 Charted by: Depth in Feet scaled 1:240

0	Gamma Ray (GAPI)	150
-160	RXO/RT	40
-200	SP (mV)	0

0.2	Deep Resistivity (Ohm-m)	2000
0.2	Medium Resistivity (Ohm-m)	2000
0.2	Shallow Resistivity (Ohm-m)	2000
10000	Line Tension (lb)	0

LSPD
(ft/min)



0	Gamma Ray (GAPI)	150
-160	RXO/RT	40
-200	SP (mV)	0

0.2	Deep Resistivity (Ohm-m)	2000
0.2	Medium Resistivity (Ohm-m)	2000
0.2	Shallow Resistivity (Ohm-m)	2000
10000	Line Tension (lb)	0

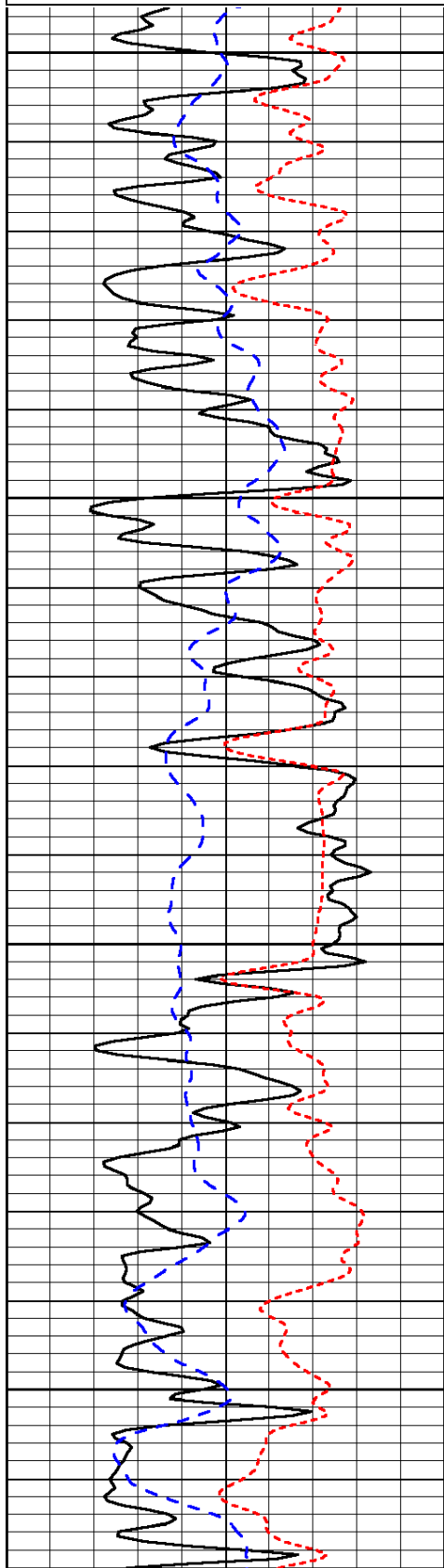
LSPD
(ft/min)

Dataset Pathname: dil/tdistck
 Presentation Format: dil
 Dataset Creation: Mon Aug 26 18:14:27 2013
 Charted by: Depth in Feet scaled 1:240

0	Gamma Ray (GAPI)	150
-160	RXO/RT	40
-200	SP (mV)	0

0.2	Deep Resistivity (Ohm-m)	2000
0.2	Medium Resistivity (Ohm-m)	2000
0.2	Shallow Resistivity (Ohm-m)	2000
10000	Line Tension (lb)	0

LSPD
(ft/min)

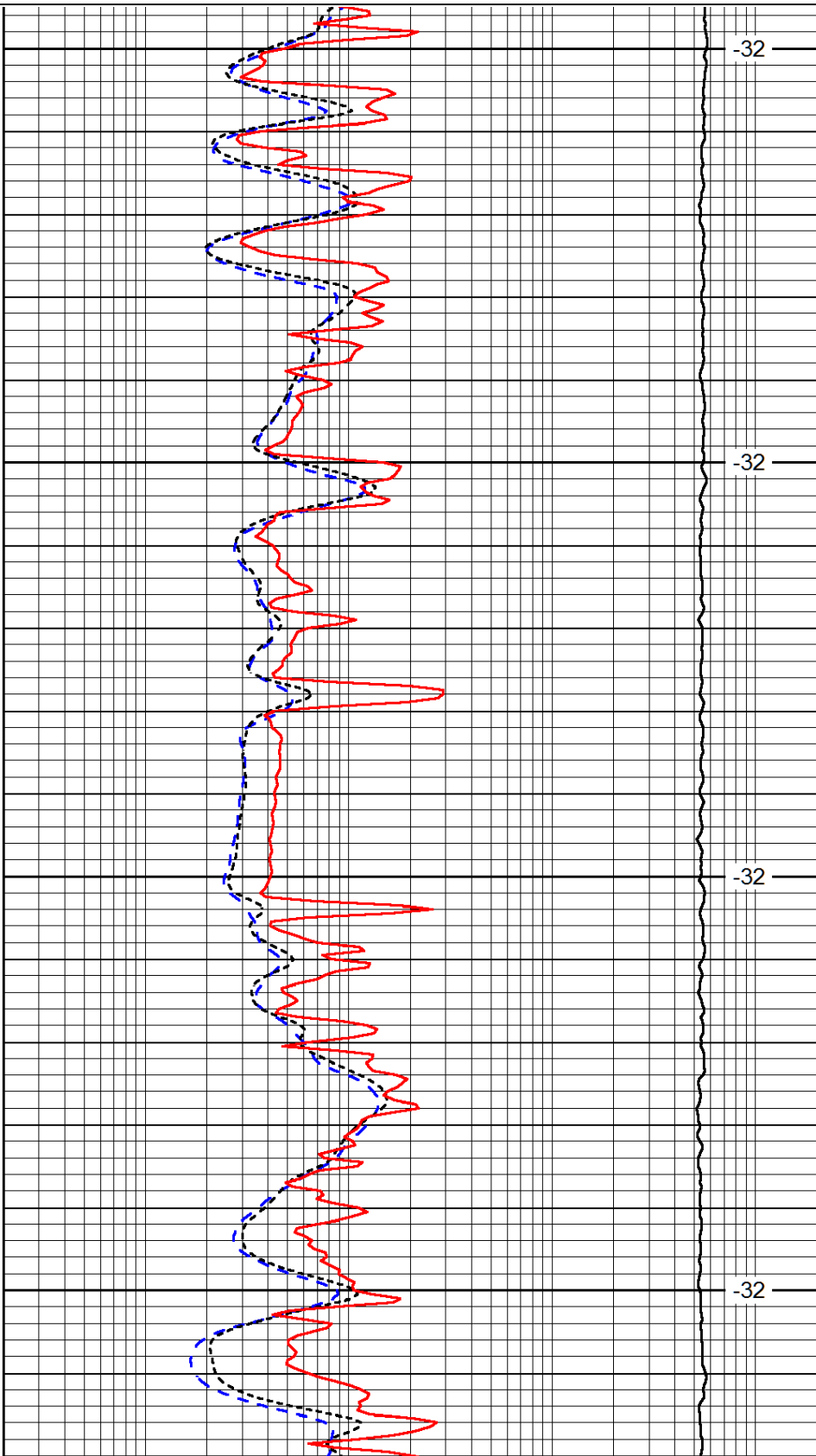


2800

2850

2900

2950

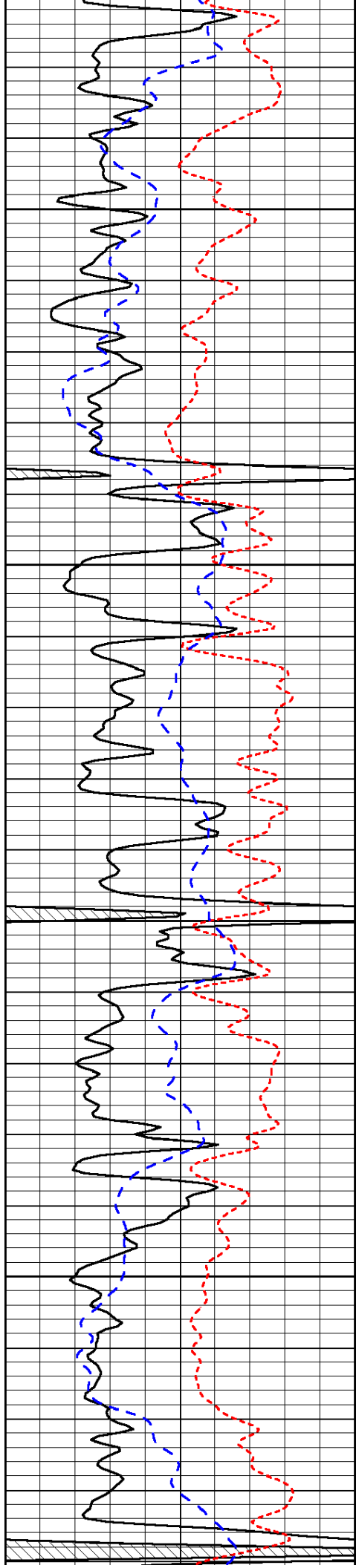


-32

-32

-32

-32

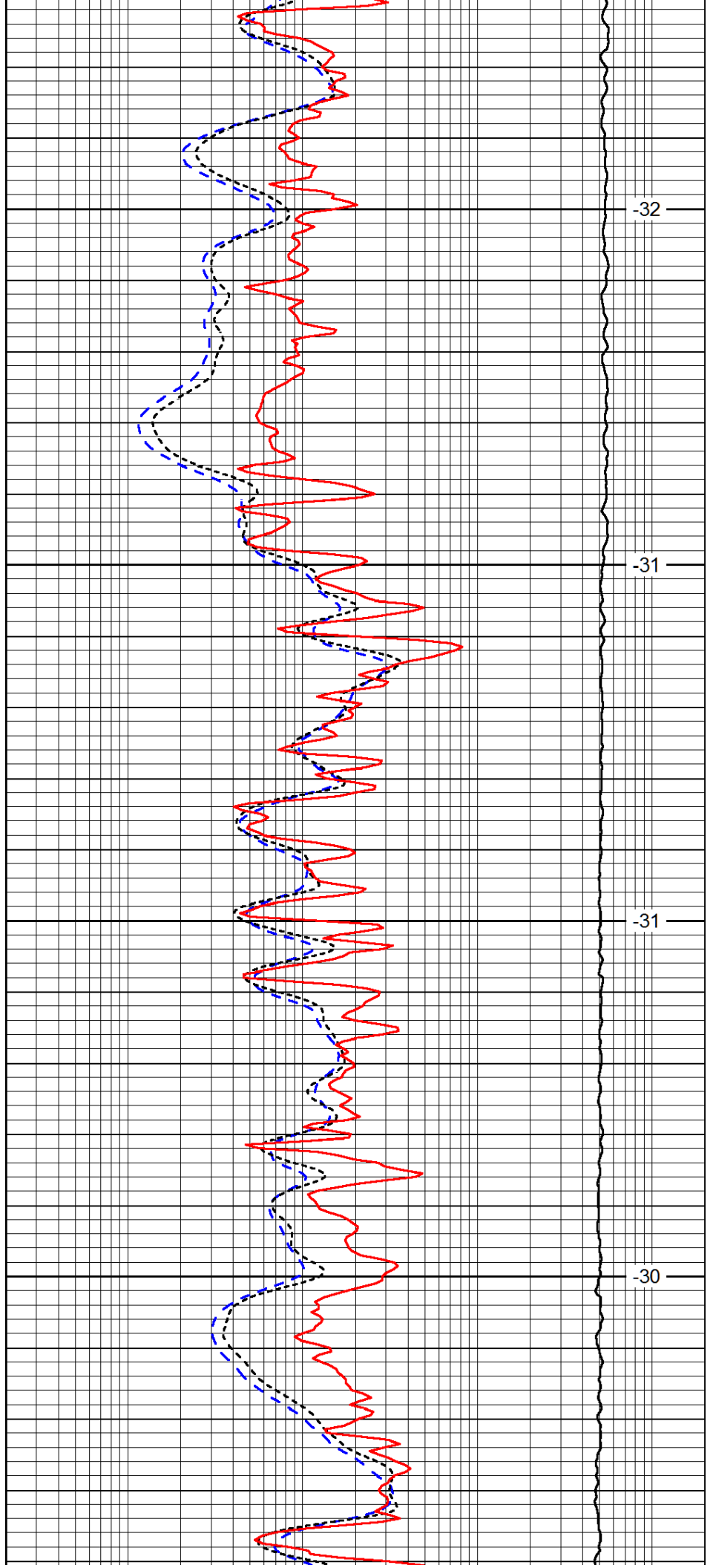


3000

3050

3100

3150

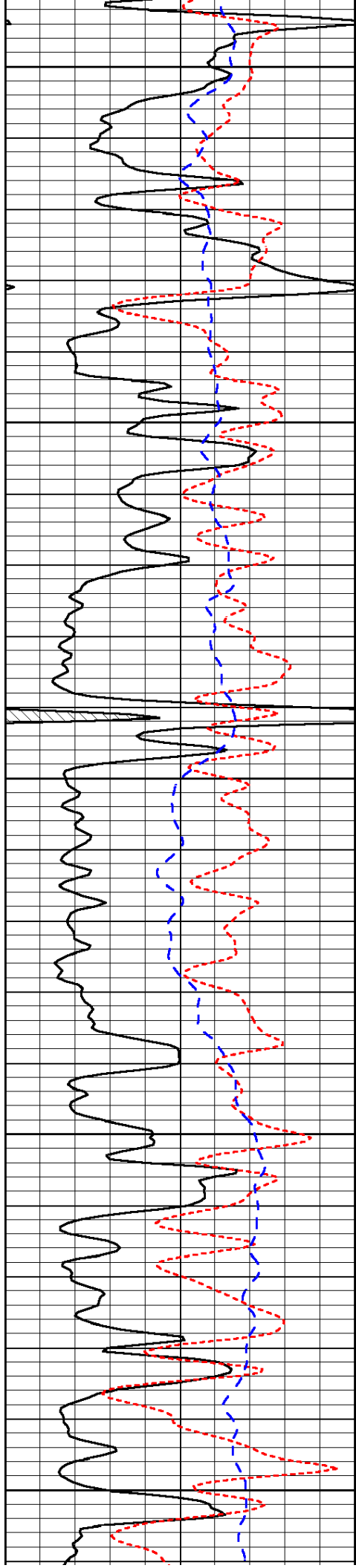


-32

-31

-31

-30



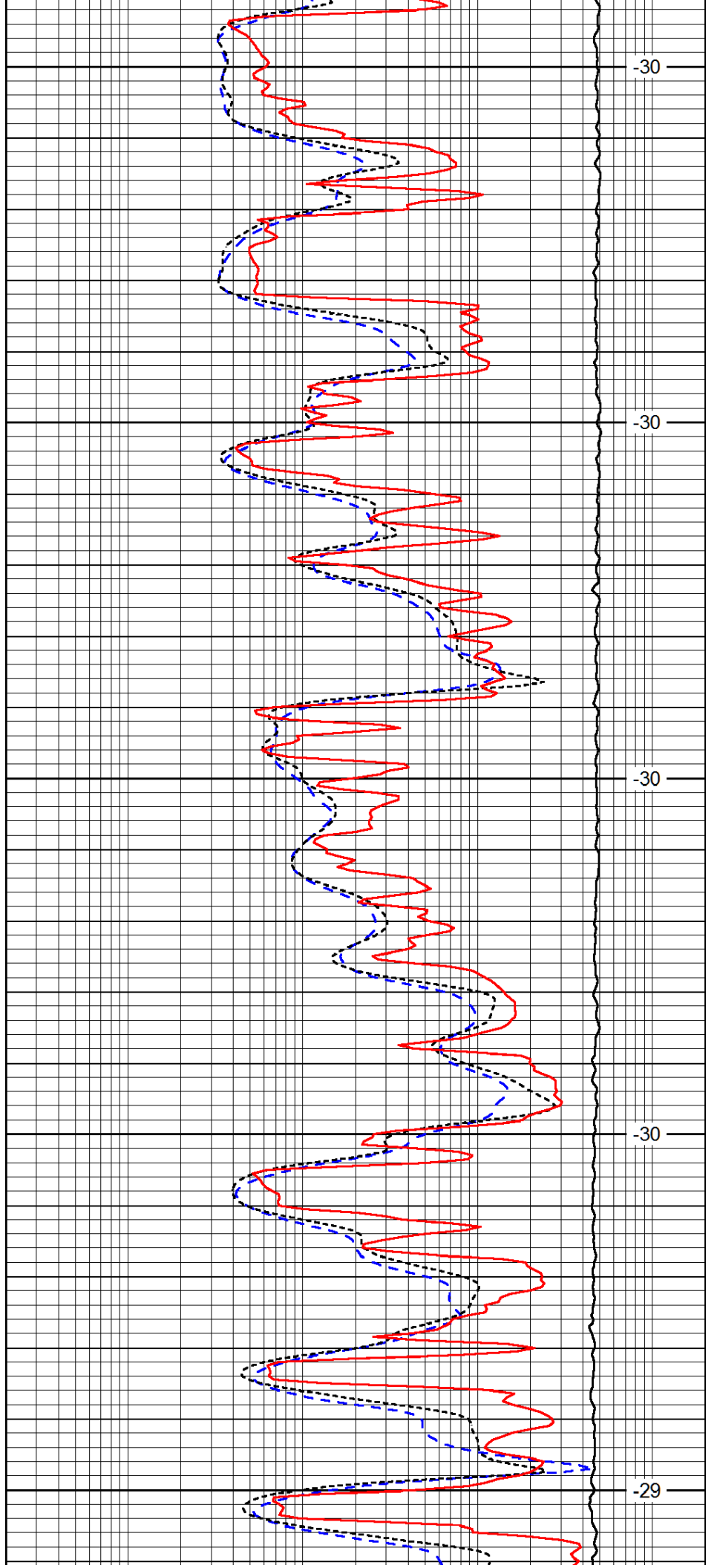
3200

3250

3300

3350

3400



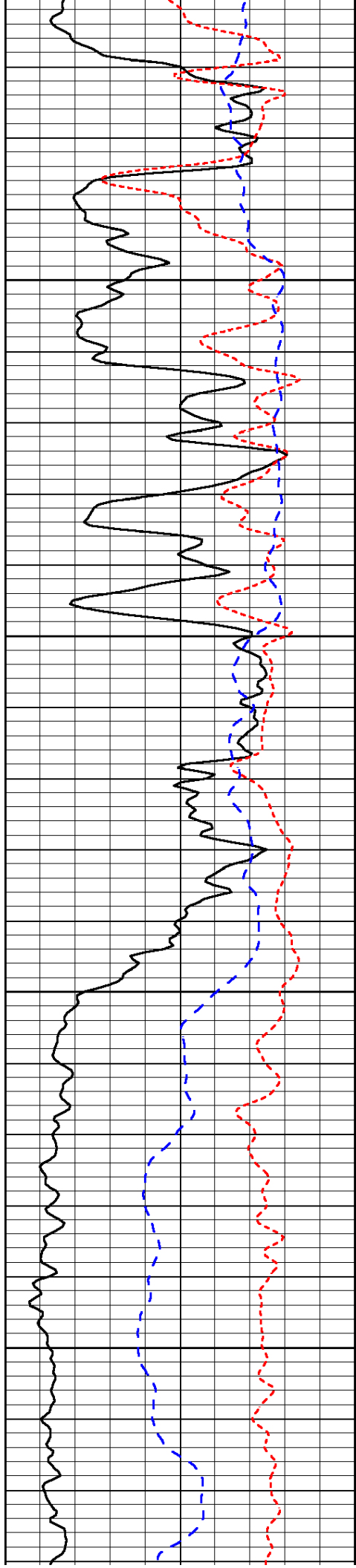
-30

-30

-30

-30

-29

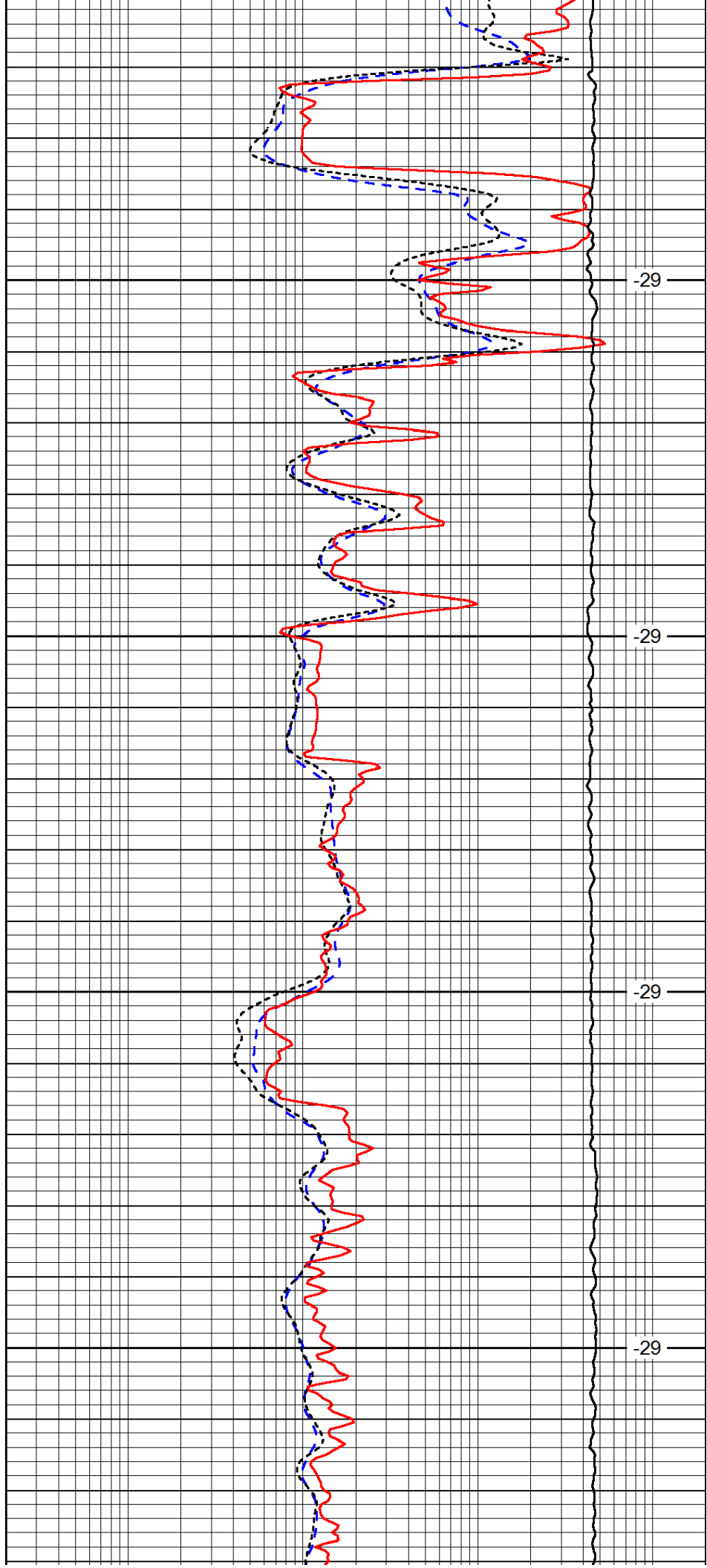


3450

3500

3550

3600

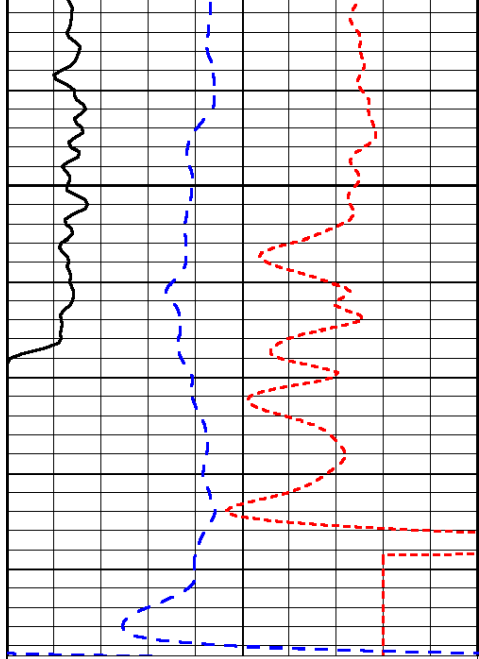


-29

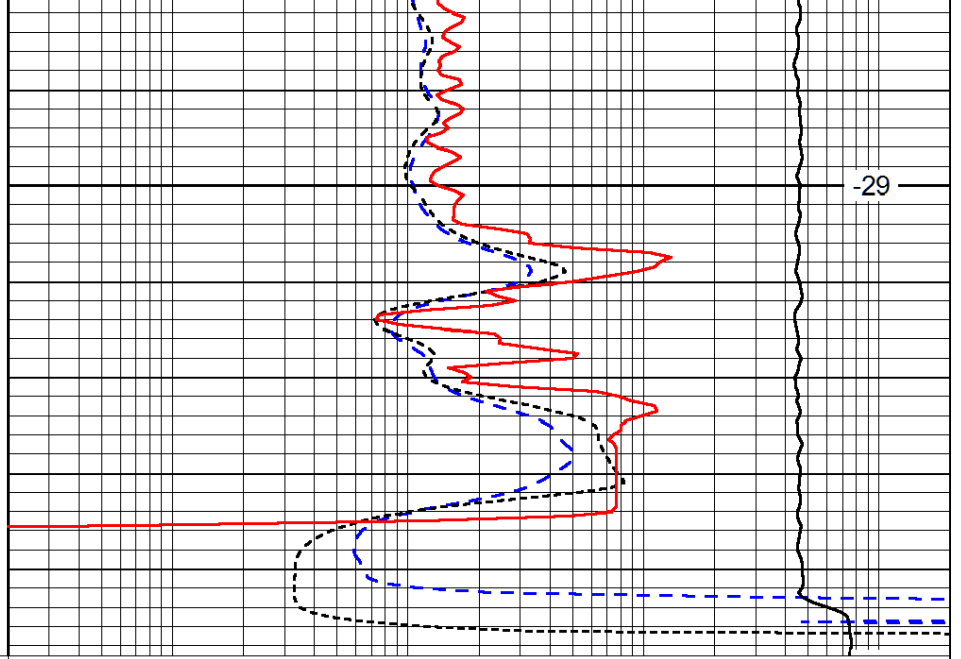
-29

-29

-29



3650



-29

0	Gamma Ray (GAPI)	150
-160	RXO/RT	40
-200	SP (mV)	0

0.2	Deep Resistivity (Ohm-m)	2000
0.2	Medium Resistivity (Ohm-m)	2000
0.2	Shallow Resistivity (Ohm-m)	2000
10000	Line Tension (lb)	0

LSPD
(ft/min)